



## Mid-Size ProLine T-Bar, Gear 15HP with 48in Side Discharge Mower

Model No. 30140 - 240000001 and up.

### Parts Catalog

---

#### Ordering Replacement Parts

To order replacement parts, please supply the part number, the quantity, and the description of each part desired.

#### Understanding Reference Numbers

Each Identified part in an illustration has a reference number. The reference number for a part also appears in the parts list, along with other information about the part.

This catalog uses two special reference number formats, one to indicate parts in a service assembly and another to indicate the quantity of a given part in an illustration.

#### Service Assembly Reference Numbers

Parts in service assemblies have reference numbers in the form a:b. The a represents the reference number of the entire service assembly and the b represents a sequential number unique to each part within the service assembly.

For example, a wheel assembly might be identified by reference number 6, the tire by 6:1, the valve by 6:2, and the wheel by 6:3. When you order the assembly identified by reference number 6, you receive all parts identified by reference numbers 6:1, 6:2, and 6:3. However, you may also order any part individually. Reference numbers of this type appear in illustrations and in part lists.

#### Reference Numbers Indicating Quantity

In an illustration, if a reference number indicates more than one part, the reference number has the form nX y. The n represents the quantity of the part, the X is the multiplication symbol, and the y represents the reference number.

For example, in an illustration, the reference number 2X 37 means that two of the parts identified by reference number 37 are indicated.

# Contents

Description	Page	Description	Page
Engine and Fuel Tank Assembly	3	Electric Equipment Assembly Kawasaki Model FH430V-AS25	19
Transmission and Drive Pulley Assembly	4	Control Equipment Assembly Kawasaki Model FH430V-AS25	20
Wheel and Drive Assembly	6	Carburetor Assembly Kawasaki Model FH430V-AS25	21
Upper Handle Assembly	8	Air Filter and Muffler Assembly Kawasaki Model FH430V-AS25	22
Front Caster and Blade Brake Assembly	9	Fuel Tank and Fuel Valve Assembly Kawasaki Model FH430V-AS25	23
Spindle Assembly	11	Starter Assembly Kawasaki Model FH430V-AS25	24
Idler Pulley Assembly	12	Label Assembly Kawasaki Model FH430V-AS25	25
Deck Assembly	13		
Cylinder and Crankcase Assembly Kawasaki Model FH430V-AS25	14		
Piston and Crankshaft Assembly Kawasaki Model FH430V-AS25	15		
Valve and Camshaft Assembly Kawasaki Model FH430V-AS25	16		
Lubrication Equipment Assembly Kawasaki Model FH430V-AS25	17		
Cooling Equipment Assembly Kawasaki Model FH430V-AS25	18		

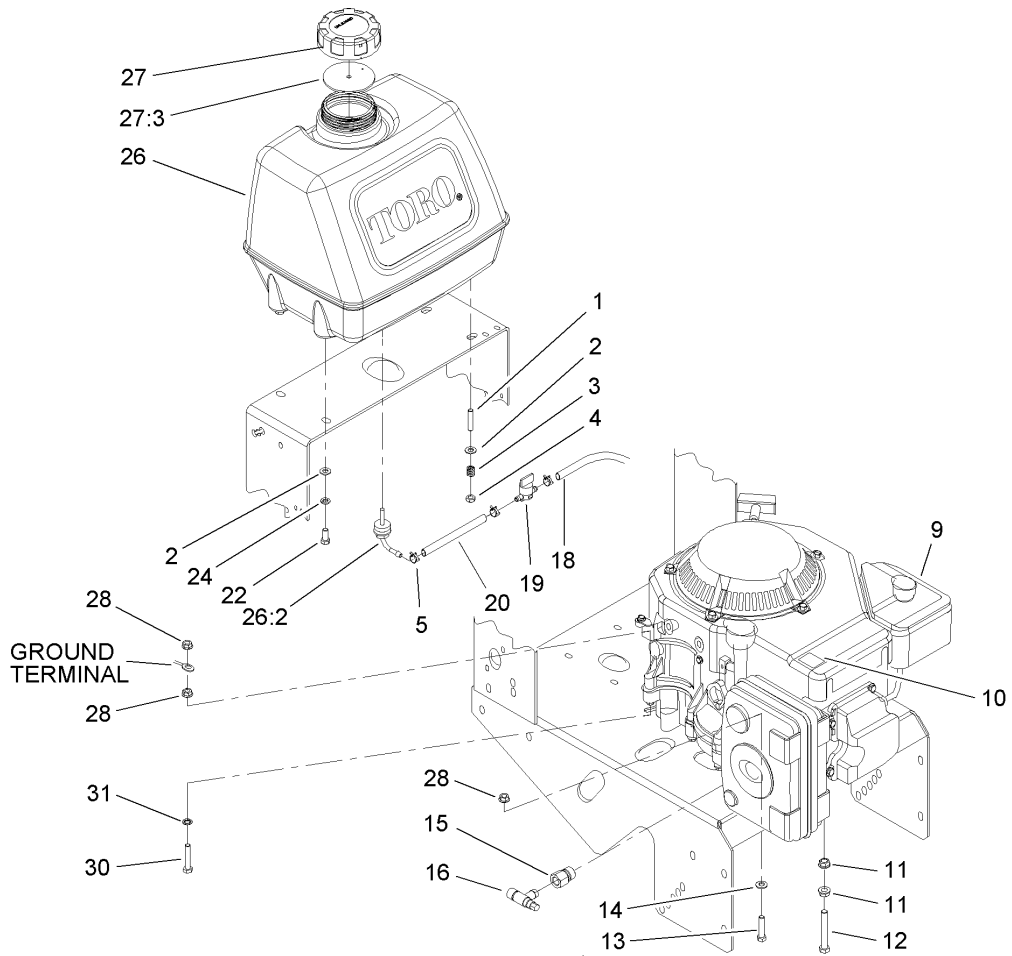
## Part Description Abbreviations

Part descriptions in this catalog may include the following abbreviations.

AR. . . . . as required	HYD. . . . . hydraulic
ASM. . . . . assembly	INC. . . . . incorporated
CARR. . . . . carriage	LH. . . . . left hand
DEG. . . . . degrees	NI. . . . . nylon insert
FH. . . . . flat head	PPH. . . . . phillips pan head
GA. . . . . gauge	PTH. . . . . phillips truss head
HF. . . . . hex flange	PTO. . . . . power take off
HH. . . . . hex head	RH. . . . . right hand
HHF. . . . . hex head flange	SFH. . . . . slotted fillister head
HHFTF. . . . . hex head flange thread forming	SHH. . . . . slotted hex head
HJ. . . . . hex jam	SHWH. . . . . slotted hex washer head
HLH. . . . . hex lag head	SPH. . . . . slotted pan head
HOC. . . . . height-of-cut	SQH. . . . . square head
HS. . . . . hex	SRH. . . . . slotted round head
HSBH. . . . . hex socket button head	STD. . . . . standard
HSFH. . . . . hex socket flat head	TAP. . . . . self tapping
HSH. . . . . hex socket head	TTH. . . . . torx truss head
HWH. . . . . hex washer head	WH. . . . . wing head
HWHTF. . . . . hex washer head thread forming	

## Footnotes

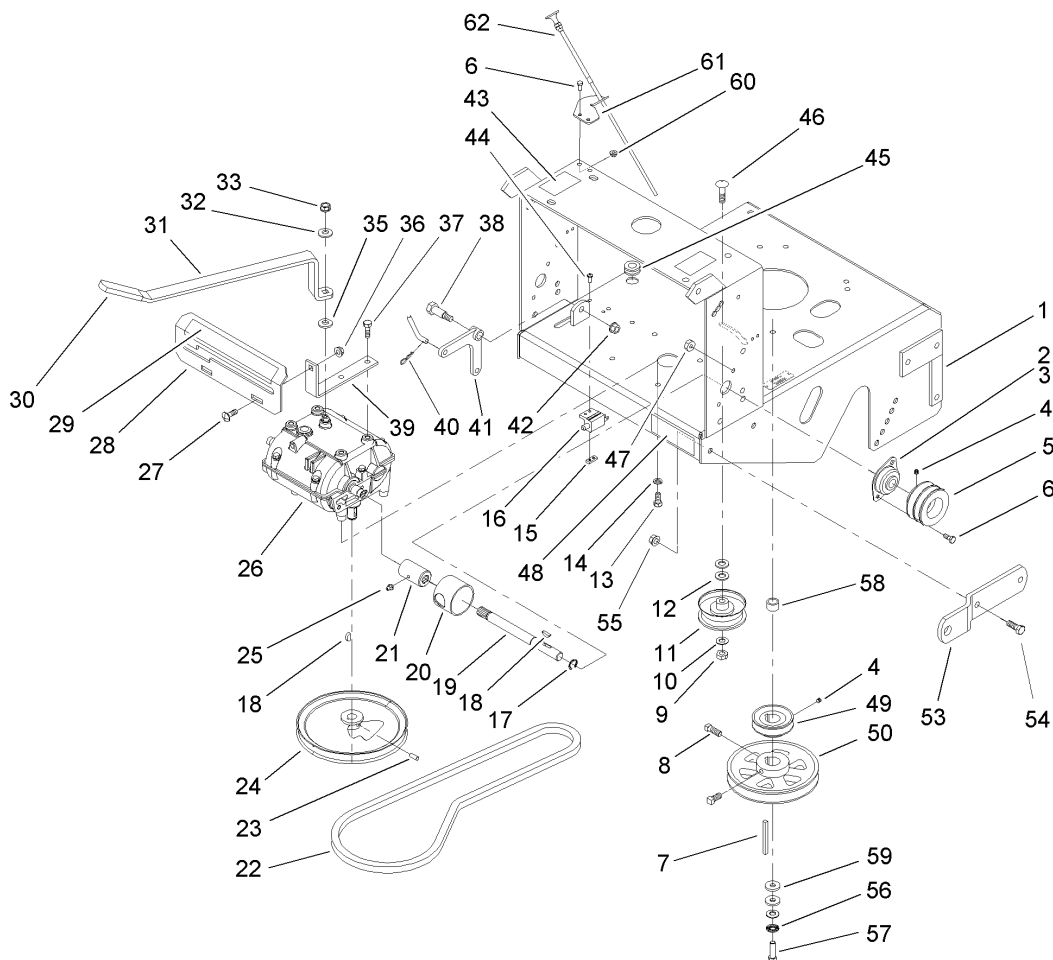
- |  |  |
|--|--|
| ❶ Not illustrated  | ❷ Not serviced separately                      |
| ❸ Obtain parts from Peerless Transmissions, model 700-070A | ❹ Obtain parts from your local Kawasaki dealer |



## Engine and Fuel Tank Assembly

Ref	Part No.	Qty.	Description
1	1-633023	2	Stud
2	3256-23	4	Washer-Flat
3	1-633349	2	Spring-Tank, Fuel
4	3296-47	2	Nut-Lock, NI
5	1-303077	5	Clamp
9		1	Engine-Kawasaki, Fh430v-As25
10	106-0699	1	Decal-Warning, Hot Surfaces
11	3290-357	2	Nut-HHF
12	323-13	1	Screw-HH
13	322-7	3	Screw-HH
14	1-303334	3	Washer-Spring
15	103-1966	1	Adapter
16	103-1965	1	Valve-Drain, Oil
18	1-303022	1	Hose-Fuel
19	1-603770	1	Valve-Fuel
20	1-603955	1	Hose-Fuel
22	322-3	2	Screw-HH
24	1-805005	2	Washer-Lock
26	106-0730	1	Fuel Tank ASM
26:2	103-2605	1	Fitting-Fuel, Bulkhead
27	88-3980	1	Gas Cap ASM
27:3	88-4010	1	Gasket-Cap, Gas
28	32128-20	5	Nut-HF
30	322-9	1	Screw-HH

Ref	Part No.	Qty.	Description
31	3254-2	1	Washer-Lock, Int
99	1-303287	1	Tie-Plastic
99	1-303335	1	Tie-Plastic

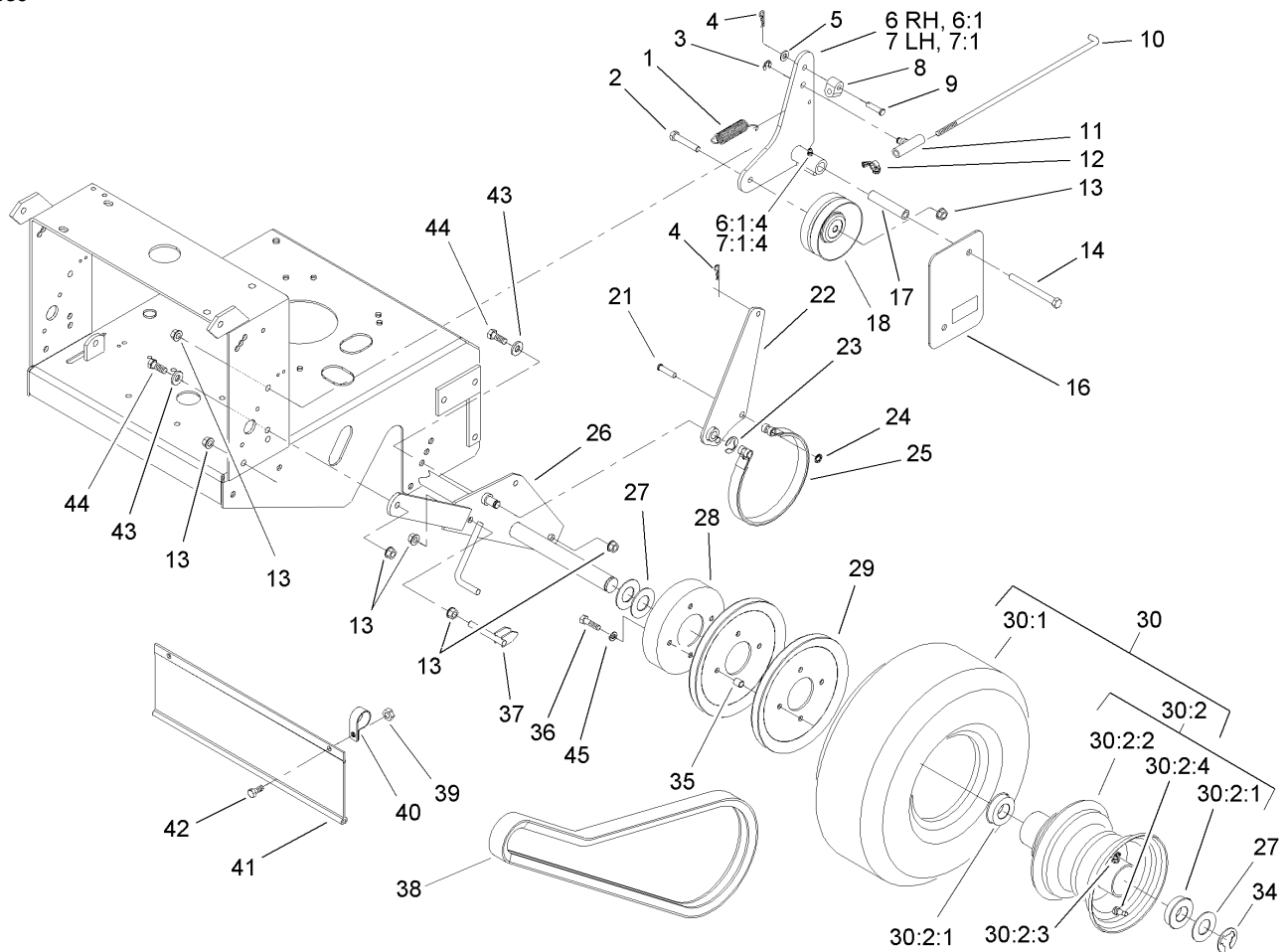


## Transmission and Drive Pulley Assembly

Ref	Part No.	Qty.	Description
1	103-2923-01	1	Deck-Rear
2	1-323252	2	Bearing-Shaft
3	1-323254	2	Flange-Output
4	1-803310	3	Screw-Set
5	103-6511	2	Sheave-Transmission
6	321-3	6	Screw-HH
7	103-4177	1	Key-Machine
8	3242-4	2	Screw-Set, SQH
9	3296-39	1	Nut-Lock, NI
10	3256-24	1	Washer-Flat
11	1-323285	1	Idler-Drive, Transmission
12	3256-5	2	Washer-Flat
13	322-3	4	Screw-HH
14	1-805005	4	Washer-Lock
15	1-633181	1	Plate-Tapped
16	1-513152	1	Switch-Closed, Normally
17	32151-62	2	Ring-Retaining
18	3257-5	3	Key-Woodruff
19	1-323502	2	Shaft-Transmission
20	51-4220	2	Guard-Coupler
21	1-323680	2	Coupler
22	1-323630	1	V-Belt
23	3245-41	2	Screw-HSH
24	1-323278	1	Sheave-Transmission

Ref	Part No.	Qty.	Description
25	302-19	2	Fitting-Grease
26	1-323500	1	Transmission
27	3230-1	2	Bolt-CARR
28	1-323387-03	1	Plate-Shift
29	98-3256	1	Decal-Speed, Ground
30	1-303020	1	Grip-Lever
31	98-3274-03	1	Lever-Shift
32	98-5975	1	Washer-Belleville
33	3296-6	1	Nut-Lock
35	1-323379	1	Washer
36	32128-20	2	Nut-HF
37	9264964	4	Screw-Hwh, Thd Cut
38	1-603403	1	Bolt-Shoulder
39	1-323389-03	2	Bracket-Plate, Shift
40	1-806003	1	Pin-Hair
41	1-303186	1	Bellcrank
42	3290-357	1	Nut-HHF
43	95-2814	1	Decal-Shut Off, Fuel
44	3290-500	2	Screw-PPH
45	1-543296	1	Grommet
46	3231-6	1	Screw-CARR
47	3296-42	4	Nut-Lock, NI
48	98-0776	1	Decal-Caution
49	1-323256	1	Sheave-Transmission



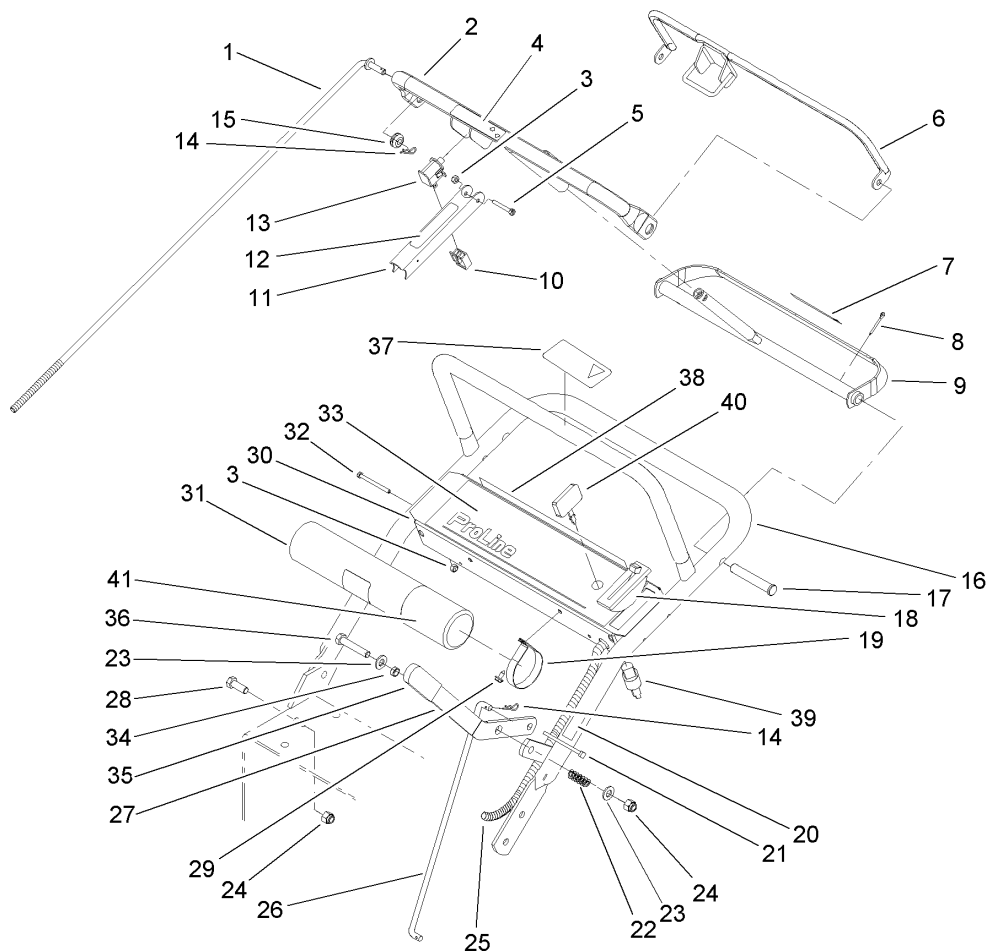


## Wheel and Drive Assembly

Ref	Part No.	Qty.	Description
1	98-3273	2	Spring-Extension
2	323-10	2	Screw-HH
3	32151-47	2	Ring-Retaining
4	1-806003	4	Pin-Hair
5	3256-23	2	Washer-Flat
6	104-1321-03	1	RH Idler Arm ASM
6:1		1	RH Idler Arm ASM
6:1:4	302-19	1	Fitting-Grease
7	104-1322-03	1	LH Idler Arm ASM
7:1		1	LH Idler Arm ASM
7:1:4	302-19	1	Fitting-Grease
8	74-0521	2	Fitting-Rod
9	283-6	2	Pin-Clevis
10	1-323296	2	Rod-Brake
11	1-322125	2	Swivel-Brake
12	1-513959	2	Wingnut-Nylock
13	3290-357	14	Nut-HHF
14	323-16	4	Screw-HH
16	98-5131-01	2	Shield-Wheel, Drive
17	1-323694	4	Spacer-Shield
18	1-323634	2	Idler-Drive, Wheel
21	1-323307	4	Pin-Clevis
22	1-322209-03	2	Arm-Brake
23	32120-47	2	Ring-Retaining, External

Ref	Part No.	Qty.	Description
24	1-803051	4	Nut-Push
25	1-323595	2	Band-Brake
26	1-322212-03	1	Axle ASM
27	1-523157	6	Washer-Spacer
27	1-543436	8	Washer-Spacer
28	1-323261	2	Drum-Brake
29	1-323253	4	Sheave-Wheel, Drive
30	1-323719	2	Wheel And Tire ASM
30:1	1-323720	1	Tire-Turfmaster
30:2	1-323328	1	Wheel And Hub ASM
30:2:1	1-323329	2	Bearing-Flanged
30:2:2		1	Rim ASM
30:2:3		1	Fitting-Grease
30:2:4		1	Stem-Valve
34	1-808519	2	Ring-Snap
35	1-323260	8	Spacer-Sheave, Wheel
36	322-6	8	Screw-HH
37	1-412358	2	Scraper
38	1-323631	2	V-Belt
39	3296-29	2	Nut-Lock, NI
40	2412-104	2	R-Clamp
41	98-3259	1	Shield-Trailing
42	322-3	2	Screw-HH
43	98-5975	4	Washer-Belleville

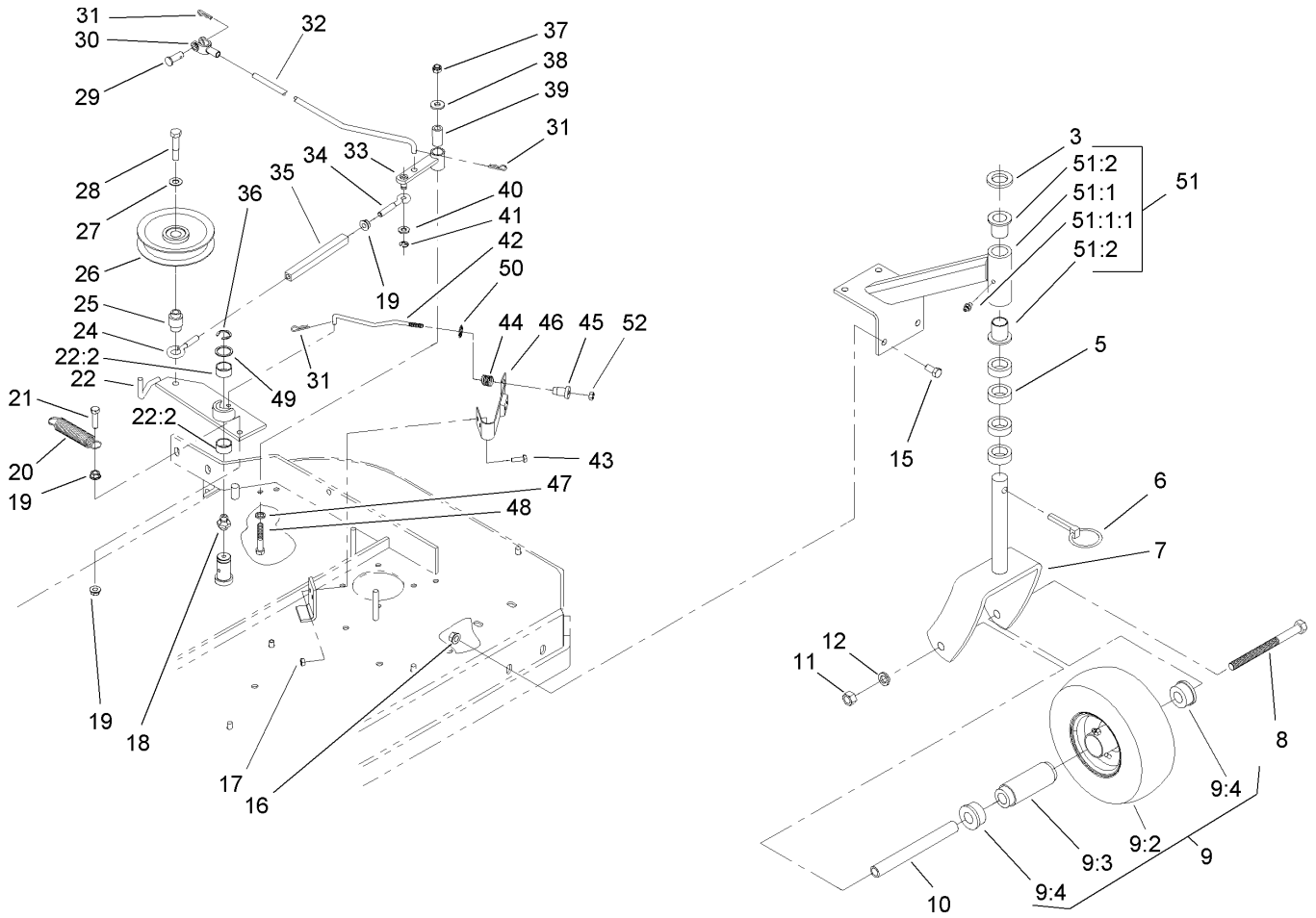




## Upper Handle Assembly

Ref	Part No.	Qty.	Description
1	98-3282	2	Rod-Control
2	95-5522-03	1	Control Bar ASM
3	3296-2	5	Nut-Lock
4	82-2290	1	Decal
5	32105-1	1	Screw-SHH
6	82-7680-03	1	Bail ASM
7	82-2280	1	Decal
8	3272-11	2	Pin-Cotter
9	99-8501-03	1	Control-Pivot ASM
10	218-595	1	Connector-Body
11	98-3261-03	1	Lever-Brake, Parking
12	98-3266	1	Decal
13	740275	1	Switch-Seat
14	1-806003	3	Pin-Hair
15	237-141	2	Grommet-Rubber
16	98-3267-03	1	Upper Handle ASM
17	283-55	2	Pin-Clevis
18	100-6450	1	Control-Throttle
19	2412-120	2	R-Clamp
20	95-5537	1	Decal-Engage, Deck
21	1-303335	1	Tie-Plastic
22	1-303160	1	Spring-Compression
23	3256-24	2	Washer-Flat
24	3296-39	5	Nut-Lock, NI

Ref	Part No.	Qty.	Description
25	106-0678	1	Harness-Wire
26	98-3279	1	Linkage-Drive, Blade
27	98-3287-03	1	Lever-Engagement, Blade
28	323-6	4	Screw-HH
29	32104-76	2	Screw
30	106-0677	1	Control Panel ASM
31	104-7050	1	Housing-Manual
32	32105-14	4	Screw-SHH
33	106-0841	1	Decal-Control Panel
34	99-8509	1	Spacer
35	1-303020	1	Grip-Lever
36	323-10	1	Screw-HH
37	98-4387	1	Decal-Protection, Ear
38	105-0884	1	Decal-Danger
39	1-403121	1	Switch-Key
40	63-8360	1	Key-Ignition
41	104-7048	1	Cap-Housing



## Front Caster and Blade Brake Assembly

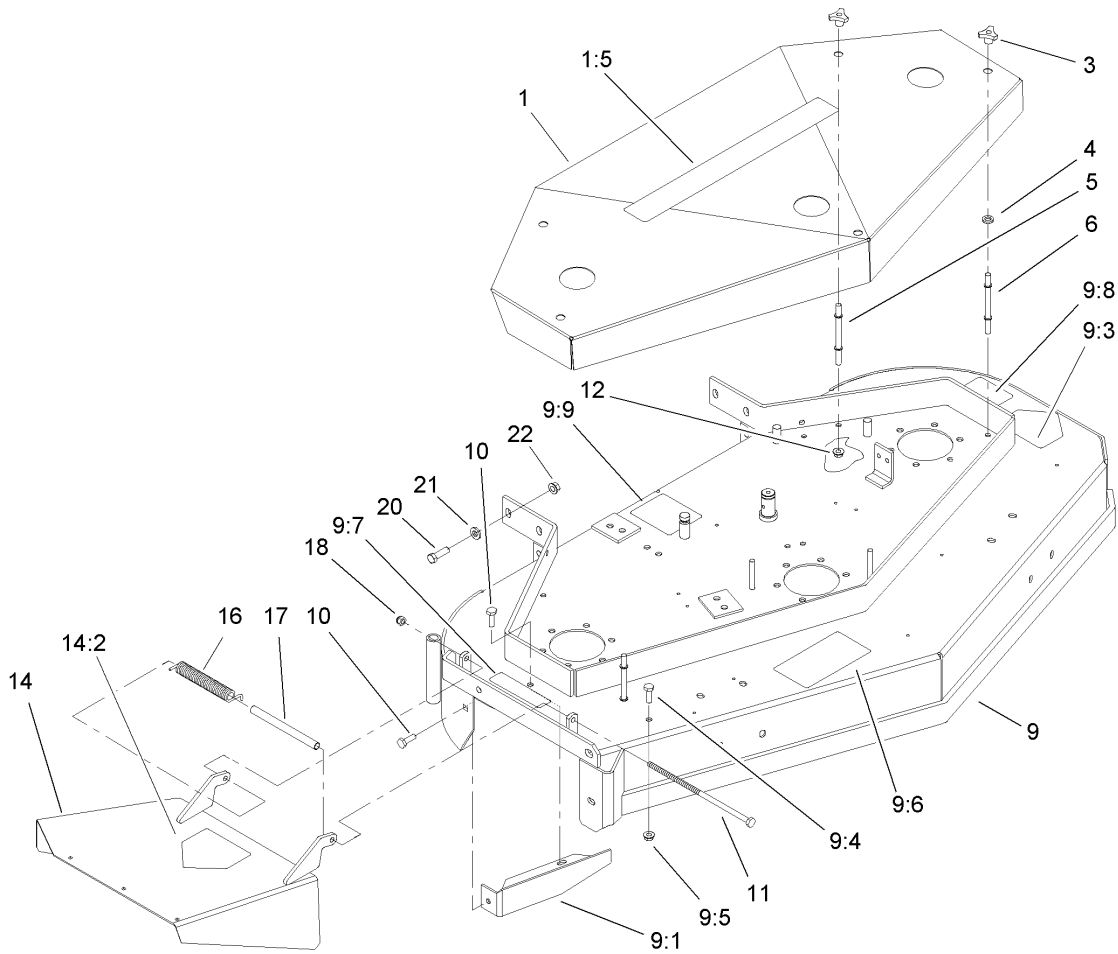
Ref	Part No.	Qty.	Description
3	1-513338	2	Washer-Flat
5	1-303314	8	Spacer-Caster
6	1-809020	2	Pin
7	1-322145-01	2	Fork
8	325-20	2	Screw-HH
9	1-513648	2	Wheel And Tire ASM
9:2	1-513808	1	Tire
9:3	1-513809	1	Bearing
9:4	1-513810	2	Bushing
10	1-513547	2	Spacer
11	3217-9	2	Nut-Hex
12	3253-7	2	Washer-Lock
15	323-4	8	Screw-HH
16	3290-357	8	Nut-HHF
17	3296-42	2	Nut-Lock, NI
18	302-19	1	Fitting-Grease
19	32128-20	3	Nut-HF
20	1-323071	1	Spring-Extension
21	322-6	1	Screw-HH
22	103-3600	1	Idler Arm ASM
22:2	1-323729	2	Sleeve-Bearing
24	1-303348	1	Eyebolt-Thread, LH
25	1-303434	1	Bushing-Engagement
26	1-603843	1	Pulley-Idler

Ref	Part No.	Qty.	Description
27	98-5975	1	Washer-Belleville
28	702809	1	Screw-Cap
29	1-808280	1	Pin-Clevis
30	1-303105	1	Yoke-Adjustable
31	1-806003	3	Pin-Hair
32	1-323303	1	Linkage-Arm
33	1-322235	1	Arm-Assist
34	1-303238	1	Eyebolt-Thread, RH
35	1-303236	1	Body-Turnbuckle
36	32151-103	1	Ring-Snap
37	3296-29	1	Nut-Lock, NI
38	3256-3	1	Washer-Flat
39	1-403179	1	Tube-Pivot
40	3256-23	1	Washer-Flat
41	32120-35	1	E-Ring
42	1-323714	1	Rod-Brake
43	321-4	2	Screw-HH
44	1-323747	1	Spring-Compression
45	1-323746	1	Spacer-Flanged
46	1-324372	1	Pad / Spring ASM
47	1-303334	1	Washer-Spring
48	322-10	1	Screw-HH
49	1-303352	1	Washer-Spindle
50	1-323748	1	Ring-Push On





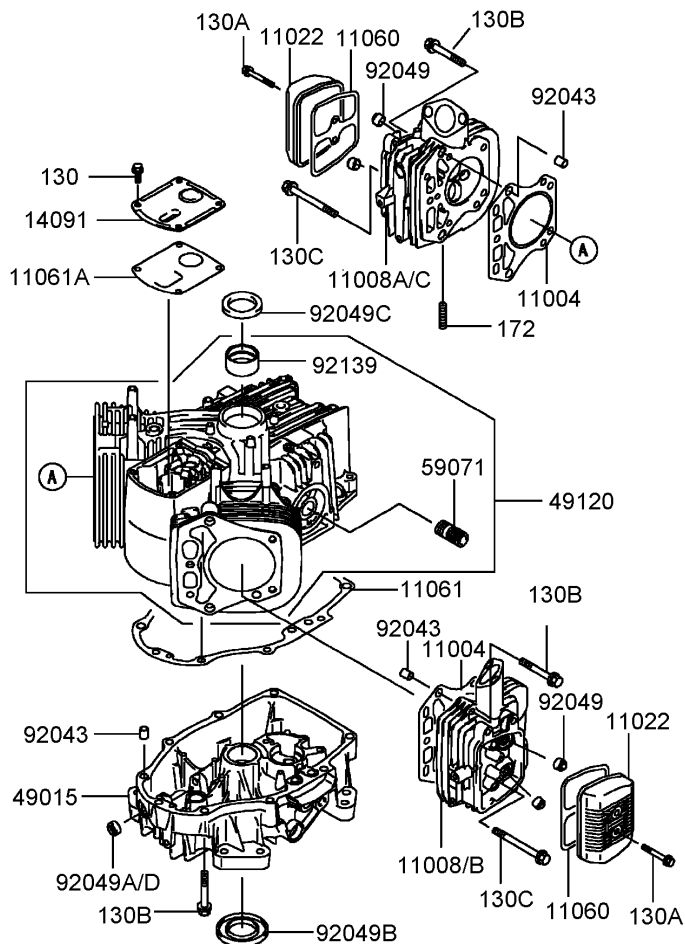




## Deck Assembly

Ref	Part No.	Qty.	Description
1	1-404246	1	Shield-Belt
1:5	106-0712	1	Decal
3	106-4161	5	Knob-Handle
4	1-323417	5	Washer
5	1-303536	3	Stud-Shield, Belt (Long)
6	1-303537	2	Stud-Shield, Belt (Short)
9	1-404270	1	Deck
9:1	1-402107-01	1	Baffle-Dogleg
9:3	1-403005	1	Decal-Danger
9:4	322-2	4	Screw-HH
9:5	32128-20	4	Nut-HF
9:6	66-1340	1	Decal-Danger
9:7	67-5360	1	Decal-Danger
9:8	98-5130	1	Decal-Torque, Bolt
9:9	99-3943	1	Decal-Routing, Belt
10	322-2	7	Screw-HH
11	1-800291	1	Screw-HH
12	32128-20	11	Nut-HF
14	1-404245	1	Chute
14:2	54-9220	1	Decal-Danger
16	98-3280	1	Spring-Deflector
17	1-323636	1	Spacer-Spring
18	3296-29	1	Nut-Lock, NI
20	323-8	6	Screw-HH

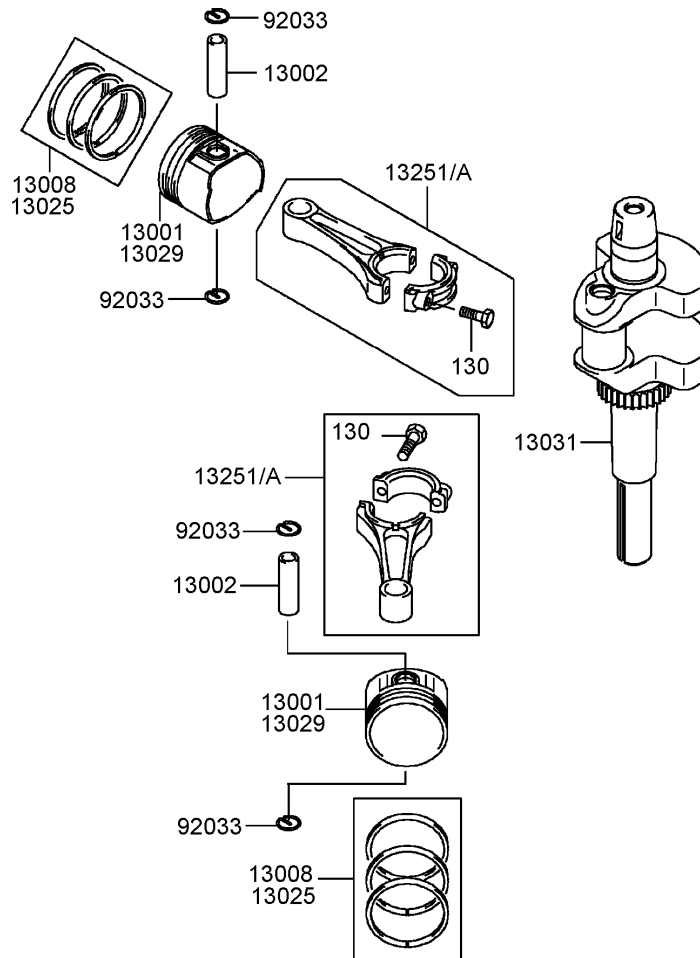
Ref	Part No.	Qty.	Description
21	98-5975	6	Washer-Belleville
22	3290-357	6	Nut-HHF



## Cylinder and Crankcase Assembly Kawasaki Model FH430V-AS25

Ref	Part No.	Qty.	Description
④ 11004	11004-7008	1	Gasket-Head
④ 11008	11008-7011	1	Head-Comp-Cylinder, No.2
④ 11008A	11008-7017	1	Head-Comp-Cylinder, No.1
④ 11008B	11008-7021	1	Head-Comp-Cylinder, #2
④ 11008C	11008-7022	1	Head-Comp-Cylinder, #1
④ 11022	11022-7003	1	Case-Rocker
④ 11060	11060-7001	1	Gasket,rocker Case
④ 11061	11061-7007	1	Gasket-Cover, Crankcase
④ 11061A	11061-7008	1	Gasket-Breather
④ 14091	14091-7007	1	Cover
④ 49015	49015-7032	1	Cover-Crankcase
④ 49120	49120-7015	1	Crankcase-Comp
④ 59071	59071-2079	1	Joint
④ 92043	92043-7001	1	Pin
④ 92049	92049-7001	1	Seal-Oil,rvc2 6x11x10.2
④ 92049A	92049-7005	1	Seal-Oil,so 8x14x5 HS
④ 92049B	92049-7015	1	Seal-Oil,sd 35x62x8 L HS
④ 92049C	92049-7016	1	Seal-Oil,sd 35x48x8 R HS
④ 92049D	92049-7019	1	Seal-Oil,so 8x14x5 HS
④ 92139	92139-7002	1	Bushing
④ 130	130B0612	1	Bolt-Flanged
④ 130A	130B0640	1	Bolt-Flanged
④ 130B	130T0850	1	Bolt-Flanged
④ 130C	130T0875	1	Bolt-Flanged

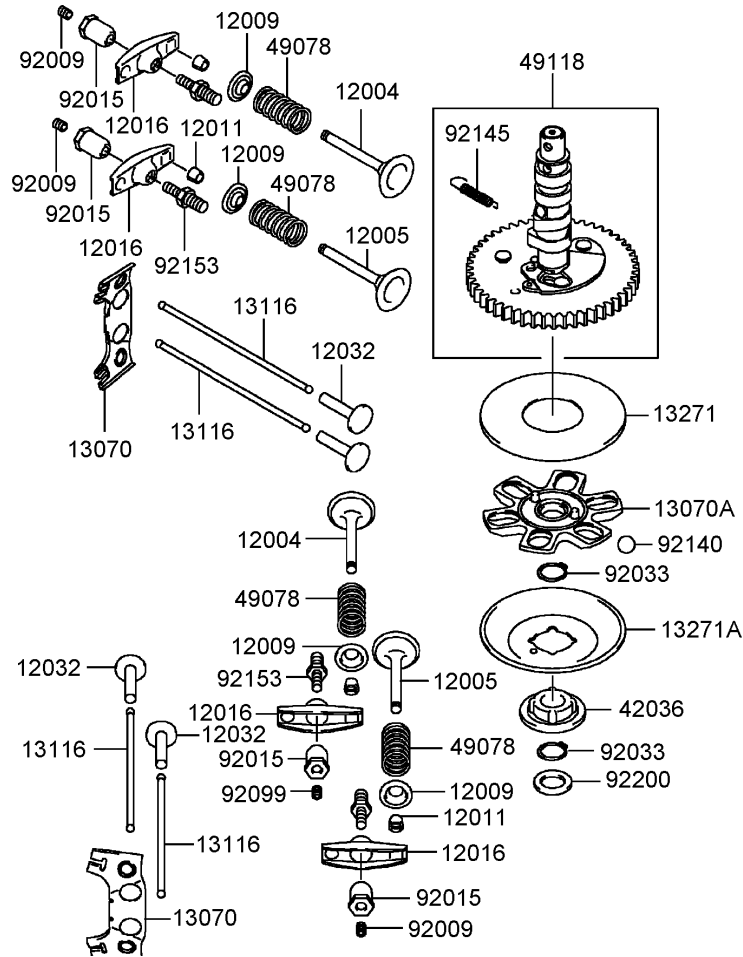
Ref	Part No.	Qty.	Description
④ 172	172G0818	1	Bolt-Stud



## Piston and Crankshaft Assembly Kawasaki Model FH430V-AS25

Ref	Part No.	Qty.	Description
④ 13001	13001-7009	1	Piston-Engine
④ 13002	13002-7001	1	Pin-Piston
④ 13008	13008-7001	1	Ring-Set-Piston
④ 13025	13025-7003	1	Ring-Set-Piston
④ 13029	13029-7005	1	Piston-Engine
④ 13031	13031-7033	1	Crankshaft-Comp
④ 13251	13251-7007	1	Connecting Rod ASM
④ 13251A	13251-7008	1	Connecting Rod Asm, U/s=0.50
④ 92033	92033-7005	1	Ring-Snap
④ 130	130G0630	1	Bolt-Flanged

--	--	--	--

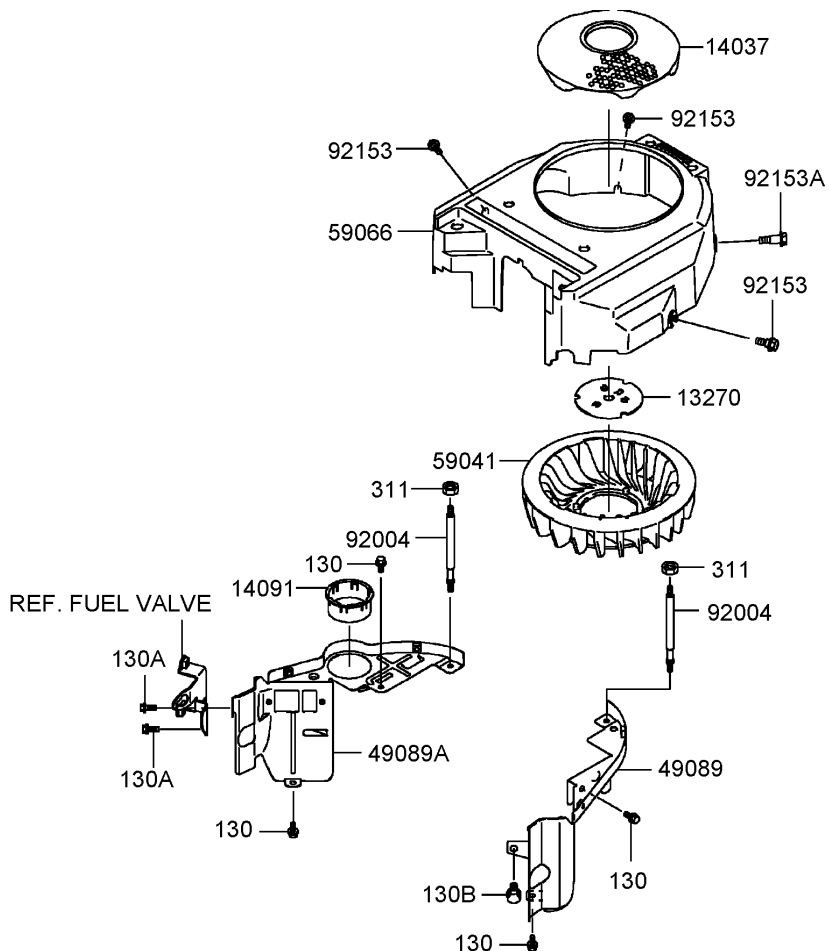


## Valve and Camshaft Assembly Kawasaki Model FH430V-AS25

Ref	Part No.	Qty.	Description
④ 12004	12004-7003	1	Valve-Intake
④ 12005	12005-7003	1	Valve-Exhaust
④ 12009	12009-7001	1	Retainer-Valve Spring
④ 12011	12011-2056	1	Collet
④ 12016	12016-7001	1	Arm-Rocker
④ 12032	12032-7001	1	Tappet
④ 13070	13070-7001	1	Guide
④ 13070A	13070-7004	1	Guide
④ 13116	13116-2057	1	Rod-Push
④ 13271	13271-7007	1	Plate
④ 13271A	13271-7021	1	Plate,governor
④ 42036	42036-7009	1	Sleeve
④ 49078	49078-7001	1	Spring-Engine Valve
④ 49118	49118-7009	1	Camshaft-Comp
④ 92009	92009-2341	1	Screw
④ 92015	92015-2253	1	Nut
④ 92033	92033-7001	1	Ring-Snap
④ 92140	92140-7002	1	Ball
④ 92145	92145-7001	1	Spring
④ 92153	92153-7019	1	Bolt
④ 92200	92200-7001	1	Washer

--	--	--	--

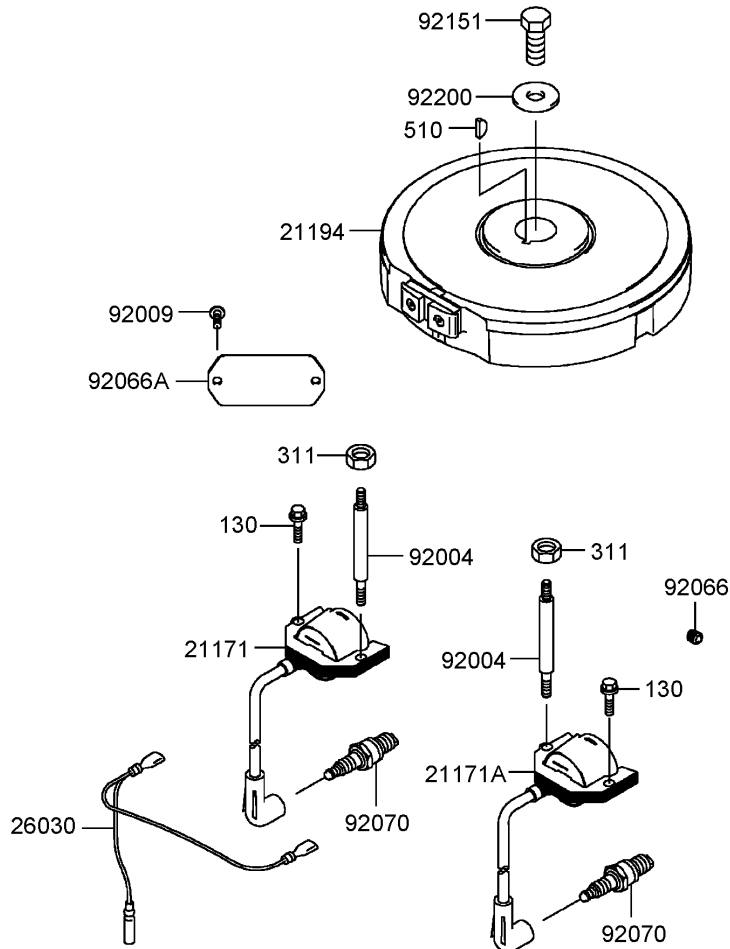




## Cooling Equipment Assembly Kawasaki Model FH430V-AS25

Ref	Part No.	Qty.	Description
④ 13270	13270-7007	1	Plate
④ 14037	14037-7021-9H	1	Screen
④ 14091	14091-7009	1	Cover
④ 49089	49089-7044	1	Shroud-Engine
④ 49089A	49089-7045	1	Shroud-Engine
④ 59041	59041-7010	1	Fan
④ 59066	59066-7023	1	Housing-Fan
④ 92004	92004-7007	1	Stud
④ 92153	92153-7007	1	Bolt
④ 92153A	92153-7008	1	Bolt
④ 130	130B0612	1	Bolt-Flanged
④ 130A	130B0616	1	Bolt-Flanged
④ 130B	130B0816	1	Bolt-Flanged
④ 311	311F0600	1	Nut-Hex

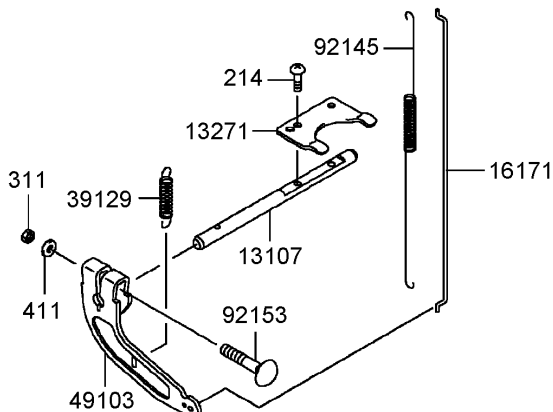
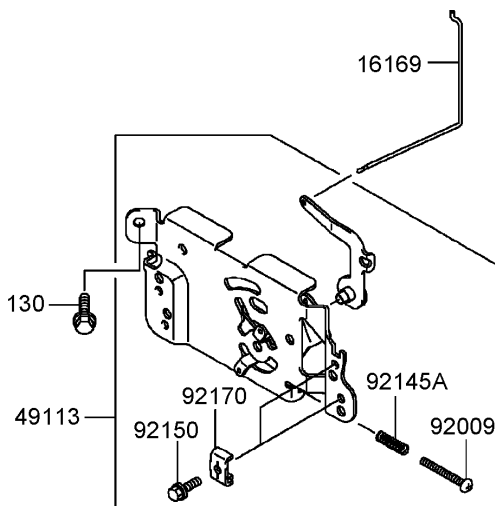
--	--	--	--



## Electric Equipment Assembly Kawasaki Model FH430V-AS25

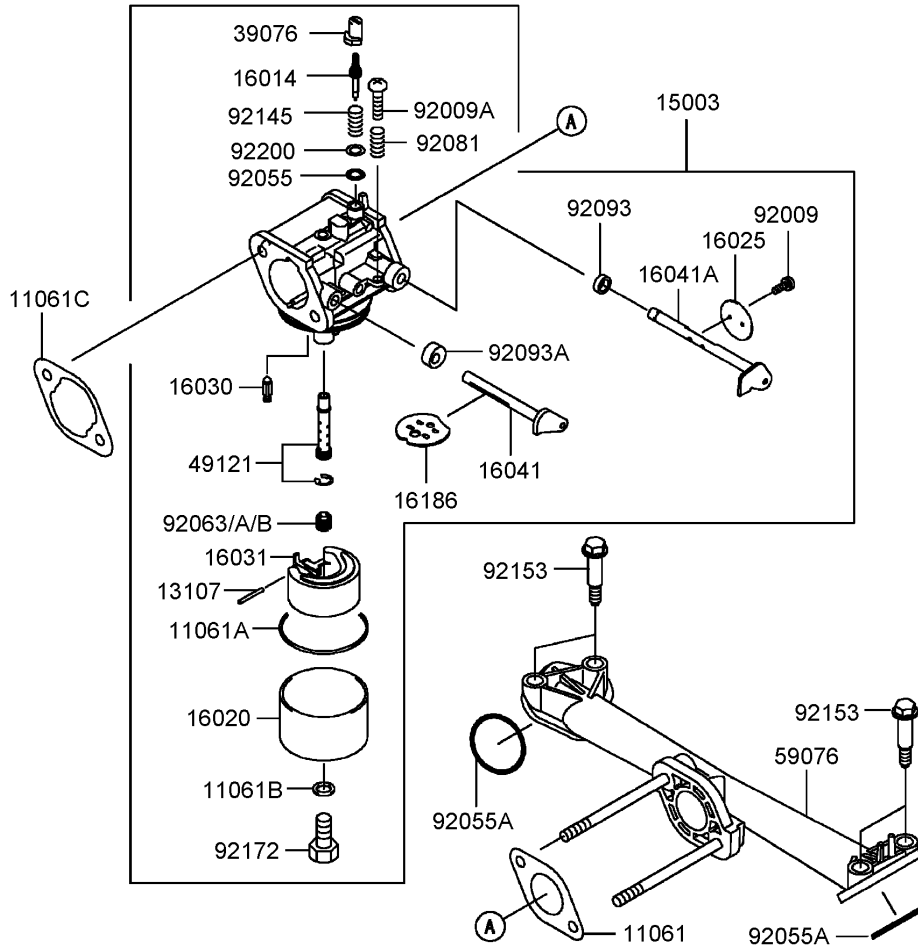
Ref	Part No.	Qty.	Description
④21171	21171-7013	1	Coil-Assy-Ignition
④21171A	21171-7014	1	Ignition Coil ASM
④21194	21194-7013	1	Flywheel-Comp
④26030	26030-7001	1	Harness
④92004	92004-7008	1	Stud
④92009	92009-2308	1	Screw
④92066	92066-7002	1	Plug
④92066A	92066-7005	1	Plug
④92070	92070-7003	1	Plug-Spark,rcj8y,solid
④92151	92151-2097	1	Bolt,12x30
④92200	92200-7002	1	Washer
④130	130B0620	1	Bolt-Flanged
④311	311F0600	1	Nut-Hex
④510	510A5100	1	Key-Woodruff

--	--	--	--



## Control Equipment Assembly Kawasaki Model FH430V-AS25

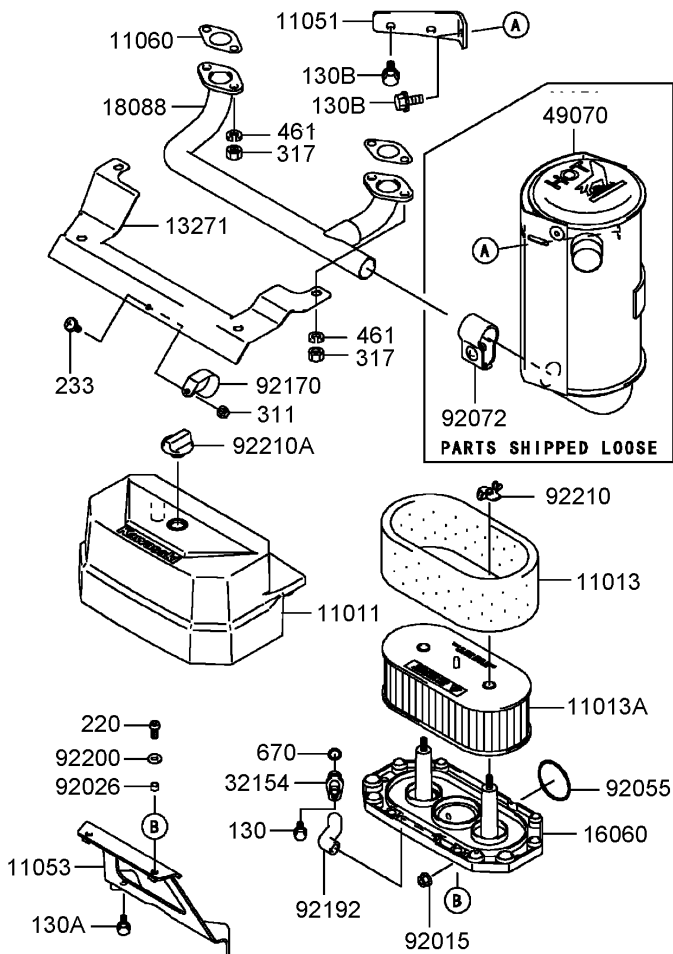
Ref	Part No.	Qty.	Description
④13107	13107-7010	1	Shaft
④13271	13271-7018	1	Plate
④16169	16169-7012	1	Link-Choke
④16171	16171-7007	1	Link
④39129	39129-7003	1	Spring-Governor
④49103	49103-7004	1	Arm-Governor
④49113	49113-7024	1	Panel-Comp-Control
④92009	92009-7007	1	Screw,4x35
④92145	92145-7003	1	Spring
④92145A	92145-7005	1	Spring
④92150	92150-2182	1	Bolt,5x18
④92153	92153-7005	1	Bolt,6x35
④92170	92170-7001	1	Clamp
④130	130B0612	1	Bolt-Flanged
④214	214B0408	1	Screw-Pan
④311	311B0600	1	Nut-Hex
④411	411b0600	1	Washer-Plain



## Carburetor Assembly Kawasaki Model FH430V-AS25

Ref	Part No.	Qty.	Description
④ 11061	11061-7004	1	Gasket,insulator
④ 11061A	11061-7009	1	Gasket,chamber
④ 11061B	11061-7010	1	Gasket,screw
④ 11061C	11061-7018	1	Gasket,air Cleaner
④ 13107	13107-7018	1	Shaft
④ 15003	15003-7061	1	Carburetor-ASM
④ 16014	16014-7002	1	Screw-Pilot
④ 16020	16020-7003	1	Chamber-Float
④ 16025	16025-7006	1	Valve-Throttle
④ 16030	16030-7003	1	Valve-Float
④ 16031	16031-7002	1	Float
④ 16041	16041-7016	1	Shaft-Carburetor,choke
④ 16041A	16041-7018	1	Shaft-Carburetor,throttle
④ 16186	16186-7002	1	Choke Valve ASM
④ 39076	39076-7001	1	Limiter
④ 49121	49121-7001	1	Nozzle-Main
④ 59076	59076-7005	1	Manifold-Intake
④ 92009	92009-2083	1	Screw
④ 92009A	92009-2349	1	Screw
④ 92055	92055-2174	1	Ring-O
④ 92055A	92055-7007	1	Ring-O, Id=31
④ 92063	92063-7026	1	Jet-Main, #88
④ 92063A	92063-7028	1	Jet-Main, #85
④ 92063B	92063-7029	1	Jet-Main, #82

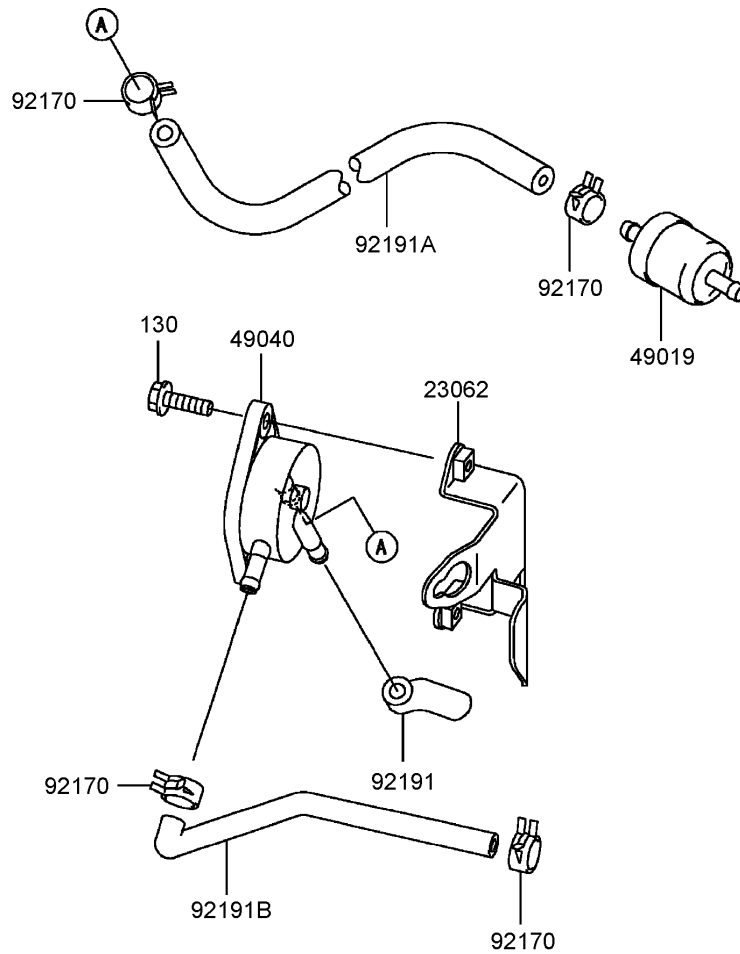
Ref	Part No.	Qty.	Description
④ 92081	92081-2234	1	Spring
④ 92093	92093-2100	1	Seal
④ 92093A	92093-7003	1	Seal
④ 92145	92145-7015	1	Spring
④ 92153	92153-7009	1	Bolt
④ 92172	92172-7002	1	Screw
④ 92200	92200-7014	1	Washer



## Air Filter and Muffler Assembly Kawasaki Model FH430V-AS25

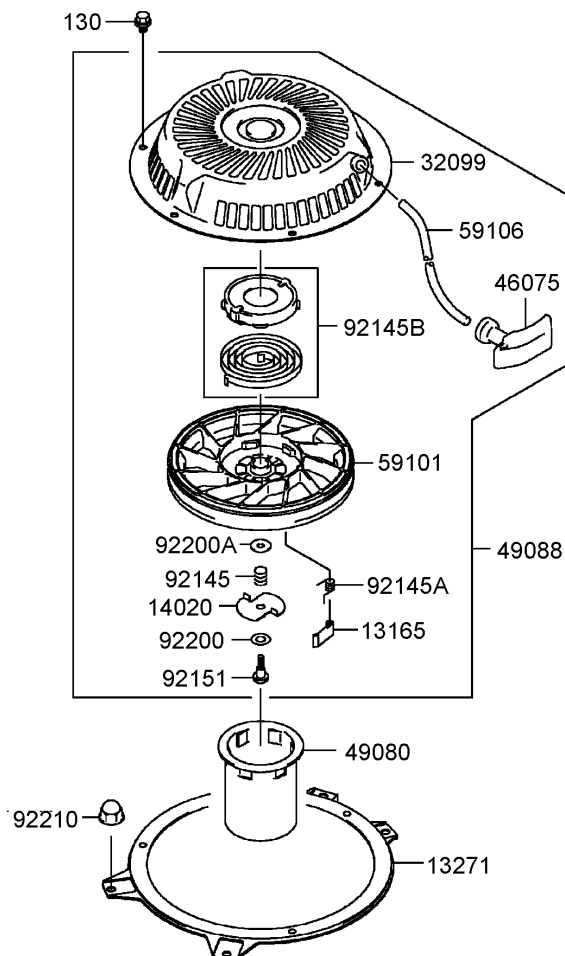
Ref	Part No.	Qty.	Description
④ 11011	11011-7035	1	Case-Air Filter
④ 11013	11013-7025	1	Element-Filter, Air
④ 11013A	11013-7031	1	Element-Filter, Air
④ 11051	11051-7005-9H	1	Bracket
④ 11053	11053-7022	1	Bracket
④ 11060	11060-7021	1	Gasket,muffler
④ 13271	13271-7022	1	Plate
④ 16060	16060-7016	1	Pipe-Intake
④ 18088	18088-7001	1	Pipe-Exhaust
④ 32154	32154-7006	1	Pipe
④ 49070	49070-7015	1	Muffler-Comp
④ 92015	92015-1193	1	Nut
④ 92026	92026-7001	1	Spacer, 6.2x7.9x5
④ 92055	92055-7015	1	O-Ring
④ 92072	92072-7008	1	Band
④ 92170	92170-7002	1	Clamp
④ 92192	92192-7010	1	Tube
④ 92200	92200-2070	1	Washer
④ 92210	92210-7004	1	Nut
④ 92210A	92210-7019	1	Nut
④ 130	130B0610	1	Bolt-Flanged
④ 130A	130B0612	1	Bolt-Flanged
④ 130B	130B0816	1	Bolt-Flanged

Ref	Part No.	Qty.	Description
④ 220	220B0614	1	Screw-Pan (Cross)
④ 233	233B0416	1	Screw-Pan-Wp++
④ 311	311B0400	1	Nut-Hex
④ 317	317R0800	1	Nut-Hex-Small
④ 461	461F0800	1	Washer-Spring
④ 670	670B2010	1	O-Ring



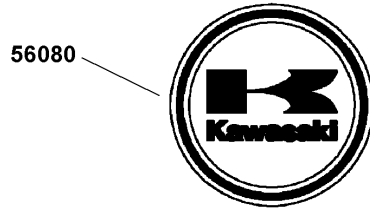
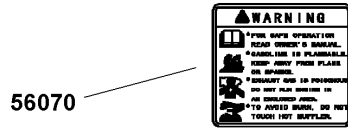
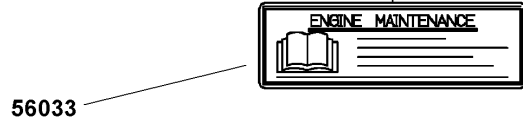
## Fuel Tank and Fuel Valve Assembly Kawasaki Model FH430V-AS25

Ref	Part No.	Qty.	Description
④ 23062	23062-7004-9H	1	Bracket-Comp
④ 49019	49019-7001	1	Filter-Fuel
④ 49040	49040-7001	1	Pump-Fuel
④ 92170	92170-2088	1	Clamp
④ 92191	92191-7002	1	Tube
④ 92191A	92191-7003	1	Tube,6.35x12.7x160
④ 92191B	92191-7004	1	Tube
④ 130	130B0620	1	Bolt-Flanged



## Starter Assembly Kawasaki Model FH430V-AS25

Ref	Part No.	Qty.	Description				
④ 13165	13165-7001	1	Pawl-Starter, Recoil				
④ 13271	13271-7003-9H	1	Plate				
④ 14020	14020-7001	1	Retainer				
④ 32099	32099-7002	1	Case-Starter, Recoil				
④ 46075	46075-7001	1	Grip-Recoil, Starter				
④ 49080	49080-7001	1	Pulley-Starting				
④ 49088	49088-7013	1	Starter-Recoil				
④ 59101	59101-7001	1	Reel-Recoil				
④ 59106	59106-7001	1	Rope				
④ 92145	92145-7006	1	Spring				
④ 92145A	92145-7007	1	Spring				
④ 92145B	92145-7008	1	Spring				
④ 92151	92151-7008	1	Bolt				
④ 92200	92200-7004	1	Washer				
④ 92200A	92200-7005	1	Washer				
④ 92210	92210-0003	1	Nut				
④ 130	130B0608	1	Bolt-Flanged				



**Label Assembly**  
**Kawasaki Model FH430V-AS25**

Ref	Part No.	Qty.	Description
④56033	56033-7001	1	Label-Manual
④56070	56070-7001	1	Label-Warning
④56080	56080-2077	1	Label-Brand
④56080A	56080-7024	1	Label-Brand

## NOTES

## NOTES

