



## Fifth Wheel Hitch Kit Heavy-Duty Workman® Vehicles

Model No. 44230 - 240000001 and up.

### Parts Catalog

---

#### Ordering Replacement Parts

To order replacement parts, please supply the part number, the quantity, and the description of each part desired.

#### Understanding Reference Numbers

Each Identified part in an illustration has a reference number. The reference number for a part also appears in the parts list, along with other information about the part.

This catalog uses two special reference number formats, one to indicate parts in a service assembly and another to indicate the quantity of a given part in an illustration.

#### Service Assembly Reference Numbers

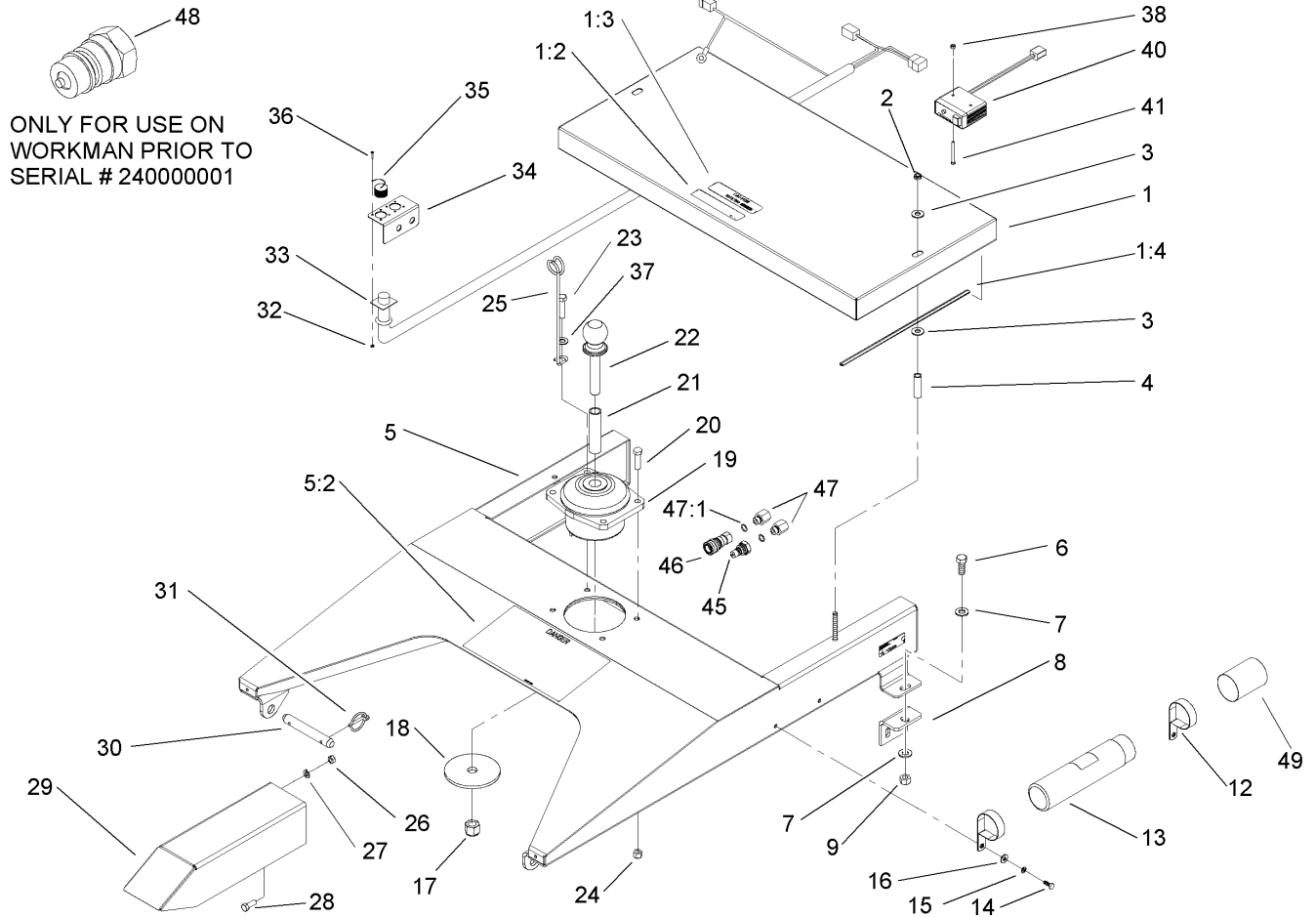
Parts in service assemblies have reference numbers in the form a:b. The a represents the reference number of the entire service assembly and the b represents a sequential number unique to each part within the service assembly.

For example, a wheel assembly might be identified by reference number 6, the tire by 6:1, the valve by 6:2, and the wheel by 6:3. When you order the assembly identified by reference number 6, you receive all parts identified by reference numbers 6:1, 6:2, and 6:3. However, you may also order any part individually. Reference numbers of this type appear in illustrations and in part lists.

#### Reference Numbers Indicating Quantity

In an illustration, if a reference number indicates more than one part, the reference number has the form nX y. The n represents the quantity of the part, the X is the multiplication symbol, and the y represents the reference number.

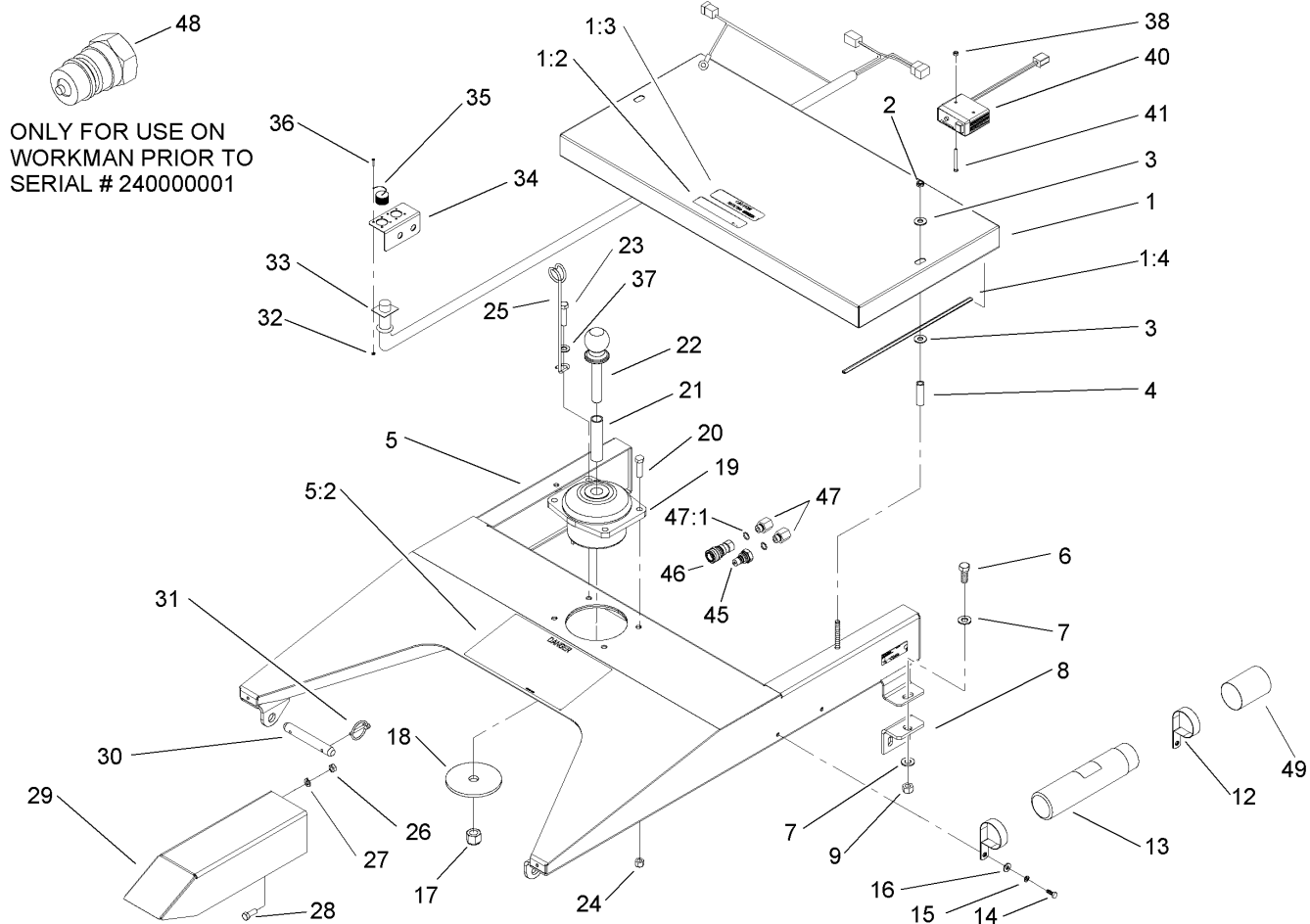
For example, in an illustration, the reference number 2X 37 means that two of the parts identified by reference number 37 are indicated.



## Fifth Wheel Hitch Assembly

Ref	Part No.	Qty.	Description
1	100-9382	1	Access Lid ASM
1:2	93-6689	1	Decal-No Riders
1:3	54-0890	1	Decal-Rotating
1:4	92-4527	1	U-Channel, Lid
2	3296-59	2	Nut-Lock, NI
3	3256-4	4	Washer-Flat
4	92-4528	2	Spacer-Lid
5	100-9383	1	Frame ASM
5:2	01-506-1300	1	Decal-Danger
6	325-5	2	Screw-HH
7	3256-26	4	Washer-Flat
8	92-2667-03	2	Bracket-Attachment, Mount
9	3296-25	2	Nut-Lock, NI
12	2412-133	2	R-Clamp
13	104-7050	1	Housing-Manual
14	321-4	2	Screw-HH
15	3253-3	2	Washer-Lock
16	3256-2	2	Washer-Flat
17	3296-51	1	Nut-Lock, NI
18	92-4508-03	1	Washer-Rebound
19	01-286-0740	1	Isolator-Rubber
20	324-6	3	Screw-HH
21	92-4523	1	Spacer-Rebound
22	92-4550	1	Hitch Ball ASM

Ref	Part No.	Qty.	Description
23	324-7	1	Screw-HH
24	3296-48	4	Nut-Lock, NI
25	92-4544	1	Bracket-Wire
26	3217-7	4	Nut-Hex
27	3253-5	4	Washer-Lock
28	323-6	4	Screw-HH
29	92-4509-03	1	Anti-Tip Bar ASM
30	92-1233	2	Pin-Clevis
31	92-1298	4	Pin-Lynch
32	3296-52	4	Nut-Lock NI
33	107-8001	1	Harness-Wire, Electric Brake
34	92-4524-03	1	Bracket
35	92-4541	1	Plug-Cap, Wire
36	3290-93	4	Screw-Head, Pan
37	3256-25	1	Washer-Flat
38	3296-2	2	Nut-Lock
40	108-3144	1	Controler-Brake, Electric
41	32105-20	2	Screw-HH
43	218-594	1	Fuse-20 Amp (Not Illustrated)
45	106-7969	1	Coupler-Quick, Male
46	106-7968	1	Coupler-Quick, Female
47	106-1381	2	Fitting-Straight
47:1	237-42	1	O-Ring
48	92-2672	2	Coupling-HYD



## Fifth Wheel Hitch Assembly (continued)

Ref	Part No.	Qty.	Description
49	104-7048	1	Cap-Housing

