



## Z149 Z Master<sup>®</sup> With 44in SFS Side Discharge Mower

Model No. 74411 - 250000001 and up.

### Parts Catalog

---

#### **Ordering Replacement Parts**

To order replacement parts, please supply the part number, the quantity, and the description of each part desired.

#### **Understanding Reference Numbers**

Each Identified part in an illustration has a reference number. The reference number for a part also appears in the parts list, along with other information about the part.

This catalog uses two special reference number formats, one to indicate parts in a service assembly and another to indicate the quantity of a given part in an illustration.

#### **Service Assembly Reference Numbers**

Parts in service assemblies have reference numbers in the form a:b. The a represents the reference number of the entire service assembly and the b represents a sequential number unique to each part within the service assembly.

For example, a wheel assembly might be identified by reference number 6, the tire by 6:1, the valve by 6:2, and the wheel by 6:3. When you order the assembly identified by reference number 6, you receive all parts identified by reference numbers 6:1, 6:2, and 6:3. However, you may also order any part individually. Reference numbers of this type appear in illustrations and in part lists.

#### **Reference Numbers Indicating Quantity**

In an illustration, if a reference number indicates more than one part, the reference number has the form nX y. The n represents the quantity of the part, the X is the multiplication symbol, and the y represents the reference number.

For example, in an illustration, the reference number 2X 37 means that two of the parts identified by reference number 37 are indicated.

# Contents

Description	Page	Description	Page
Front Frame Assembly	3	Cylinder/Crankcase Assembly Kawasaki	
Caster Wheel Assembly No. 1-634662	4	FH580V AS29	26
Height-of-Cut Assembly	5	Piston/Crankshaft Assembly Kawasaki	
Main Frame Assembly	6	FH580V AS29	28
Fuel System Assembly	7	Valve/Camshaft Assembly Kawasaki FH580V	
Parking Brake Assembly	8	AS29	30
Motion Control Assembly	9	Lubrication Equipment Assembly Kawasaki	
Hydraulic System Assembly	10	FH580V AS29	32
Hydraulic Pump Assembly No. 103-1942	12	Cooling Equipment Assembly Kawasaki	
Pump Idler and Belt Assembly	13	FH580V AS29	34
Engine, Clutch and Muffler Assembly	14	Electric Equipment Assembly Kawasaki	
Deck Connection Assembly	15	FH580V AS29	36
Deck Assembly No. 107-8562	16	Control Equipment Assembly Kawasaki	
Deck Decal Assembly No. 107-8580	18	FH580V AS29	38
Rubber Deflector Assembly No. 108-4060	19	Carburetor Assembly Kawasaki FH580V AS29	40
Spindle Assembly No. 107-8570	20	Air Filter/Muffler Assembly Kawasaki FH580V	
Electrical System Assembly	21	AS29	42
Seat and Bracket Assembly	22	Starter Assembly Kawasaki FH580V AS29	44
Seat Assembly No. 107-1867	23	Fuel Tank/Fuel Valve Assembly Kawasaki	
Roll-Over-Protection-System Assembly	24	FH580V AS29	46
Roll-Over-Protection-System Assembly No. 107-3066	25	Label Assembly Kawasaki FH580V AS29	47

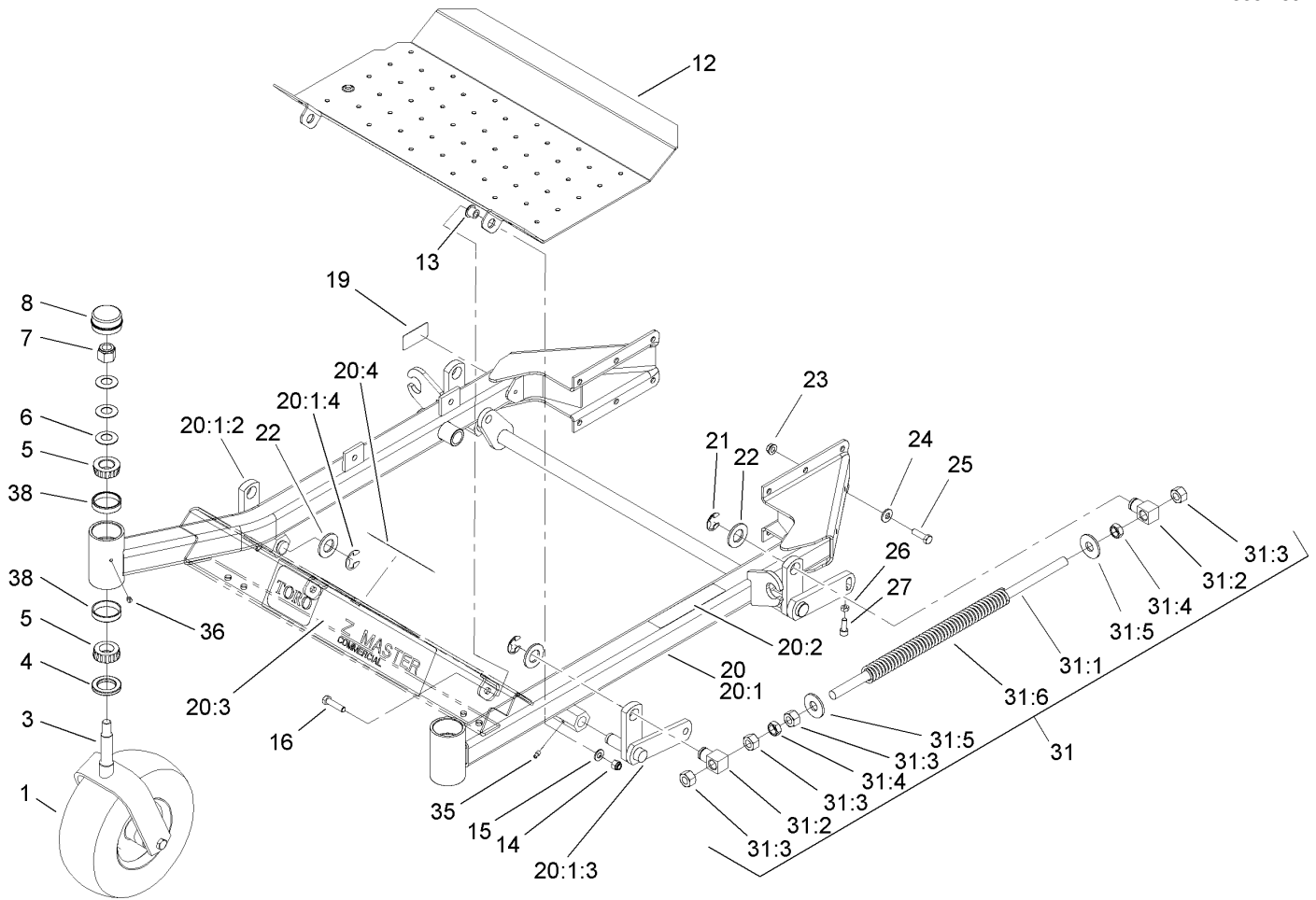
## Part Description Abbreviations

Part descriptions in this catalog may include the following abbreviations.

AR. .... as required	INC. .... incorporated
ASM. .... assembly	LH. .... left hand
CARR. .... carriage	NI. .... nylon insert
DEG. .... degrees	PPH. .... phillips pan head
FH. .... flat head	PTH. .... phillips truss head
GA. .... gauge	PTO. .... power take off
HF. .... hex flange	RH. .... right hand
HH. .... hex head	SFH. .... slotted fillister head
HHF. .... hex head flange	SHH. .... slotted hex head
HHFTF. .... hex head flange thread forming	SHWH. .... slotted hex washer head
HJ. .... hex jam	SPH. .... slotted pan head
HLH. .... hex lag head	SQH. .... square head
HOC. .... height-of-cut	SRH. .... slotted round head
HS. .... hex	STD. .... standard
HSBH. .... hex socket button head	TAP. .... self tapping
HSFH. .... hex socket flat head	TTH. .... torx truss head
HSH. .... hex socket head	WH. .... wing head
HWH. .... hex washer head	
HWHTF. .... hex washer head thread forming	
HYD. .... hydraulic	

## Footnotes

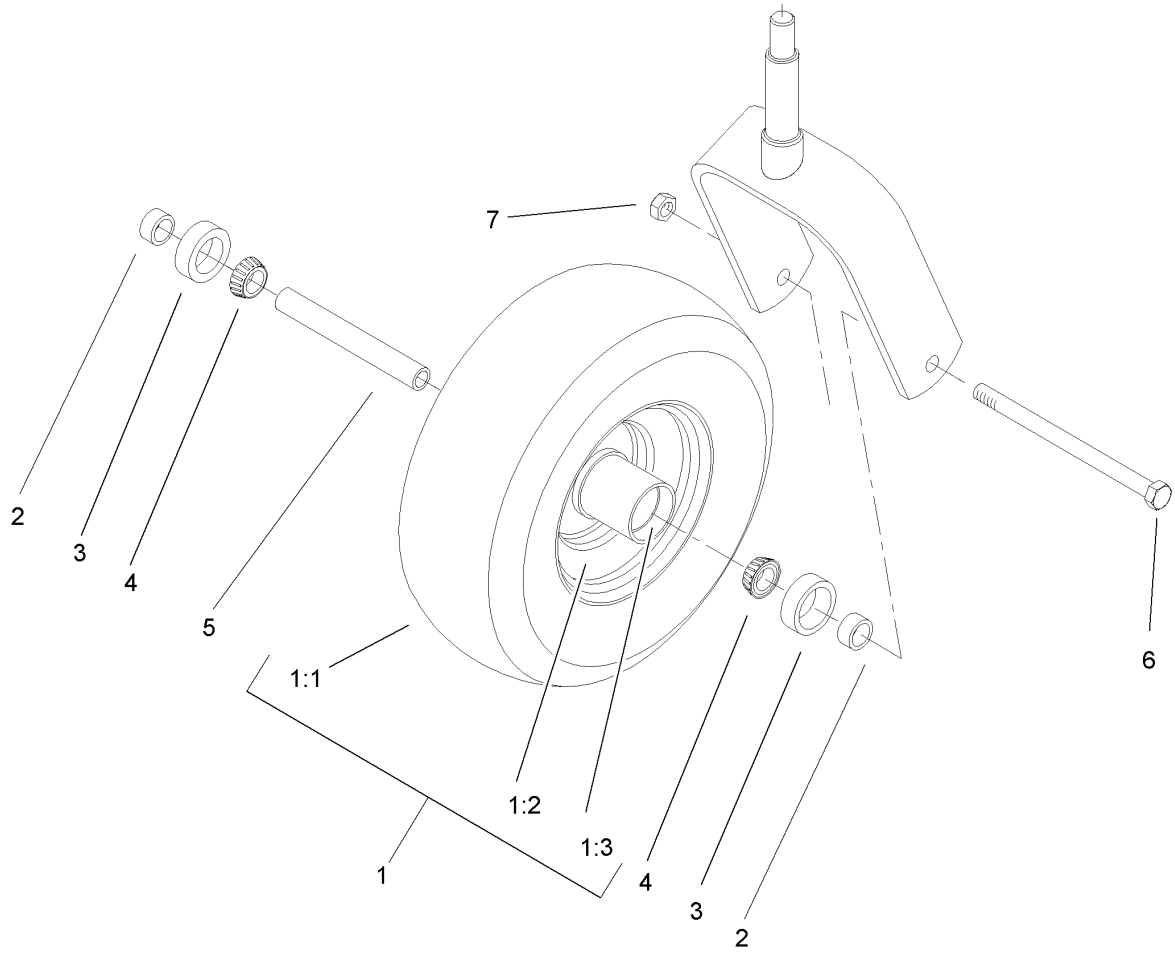
- |                      |  |
|----------------------|--|
| ❶ Not illustrated    | ❷ Not serviced separately                      |
| ❸ Optional Equipment | ❹ Obtain parts from your local Kawasaki dealer |



## Front Frame Assembly

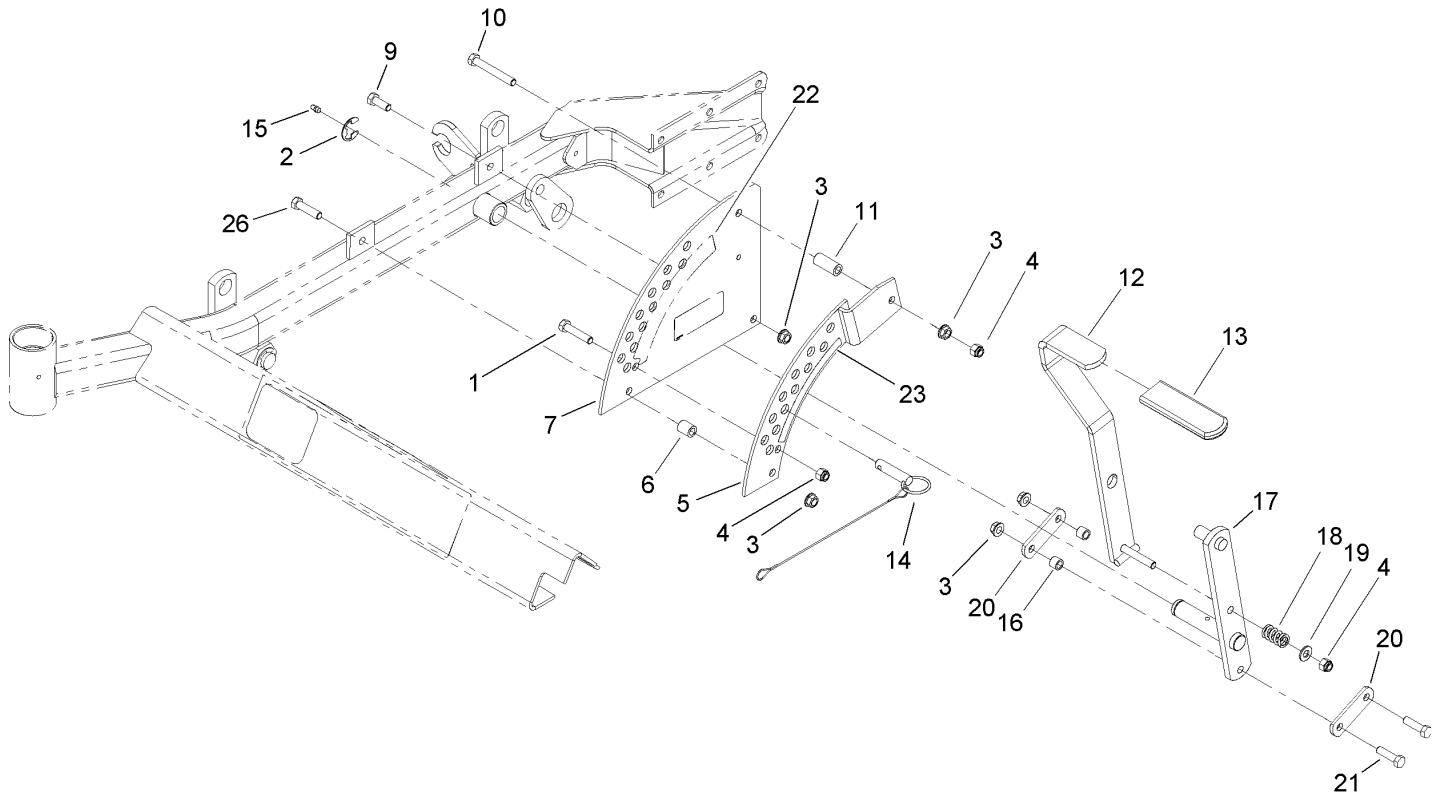
Ref	Part No.	Qty.	Description
1	1-634662	2	Caster Wheel ASM
3	1-632511-01	2	Caster
4	1-543511	2	Seal-Grease
5	254-94	4	Bearing-Cone, Tapered
6	1-633508	6	Washer-Bellville
7	3296-51	2	Nut-Lock, NI
8	1-543513	2	Cap-Grease
12	108-1856-03	1	Pan-Floor
13	86-2180	2	Bushing-Flange
14	3296-39	2	Nut-Lock, NI
15	3256-24	2	Washer-Flat
16	323-8	2	Screw-HH
19	105-2625	1	Decal-Std, Safety
20	107-1650	1	Front Frame ASM
20:1		1	Frame-Front
20:1:2	99-3872-01	1	RH Lift Arm ASM
20:1:3	99-3871-01	1	LH Lift Arm ASM
20:1:4	32151-103	2	Ring-Snap
20:2	1-633818	1	Decal-Warning
20:3	106-7451	1	Decal
20:4	107-2112	1	Decal-Warning
21	32151-103	4	Ring-Snap
22	3256-29	6	Washer-Flat
23	3290-357	12	Nut-HHF

Ref	Part No.	Qty.	Description
24	98-5975	12	Washer-Bellville
25	323-7	12	Screw-HH
26	3218-2	2	Nut-Jam
27	3274-18	2	Screw-HSH
31	1-634439	2	Front Frame Spring ASM
31:1	1-633096	1	Rod-Lift, Deck
31:2	1-633441	2	Swivel-Deck Mount, Rear
31:3	3217-11	4	Nut-Hex
31:4	3218-6	2	Nut-Jam
31:5	3256-7	2	Washer-Flat
31:6	1-633064	1	Spring-Support, Deck
35	302-19	4	Fitting-Grease
36	1-811010	2	Plug
38	254-72	4	Bearing-Cup, Tapered



### Caster Wheel Assembly No. 1-634662

Ref	Part No.	Qty.	Description				
1	1-633582	1	Wheel And Tire ASM				
1:1	1-633002	1	Tire				
1:2	1-633583	1	Wheel				
1:3	1-633584	2	Bearing-Cup				
2	1-633581	2	Spacer-Bearing				
3	1-633580	2	Seal-Bearing				
4	1-633585	2	Bearing-Cone, Taper				
5	1-633579	1	Spacer-Caster, Front				
6	325-36	1	Screw-HH				
7	3296-45	1	Nut-Lock, NI				

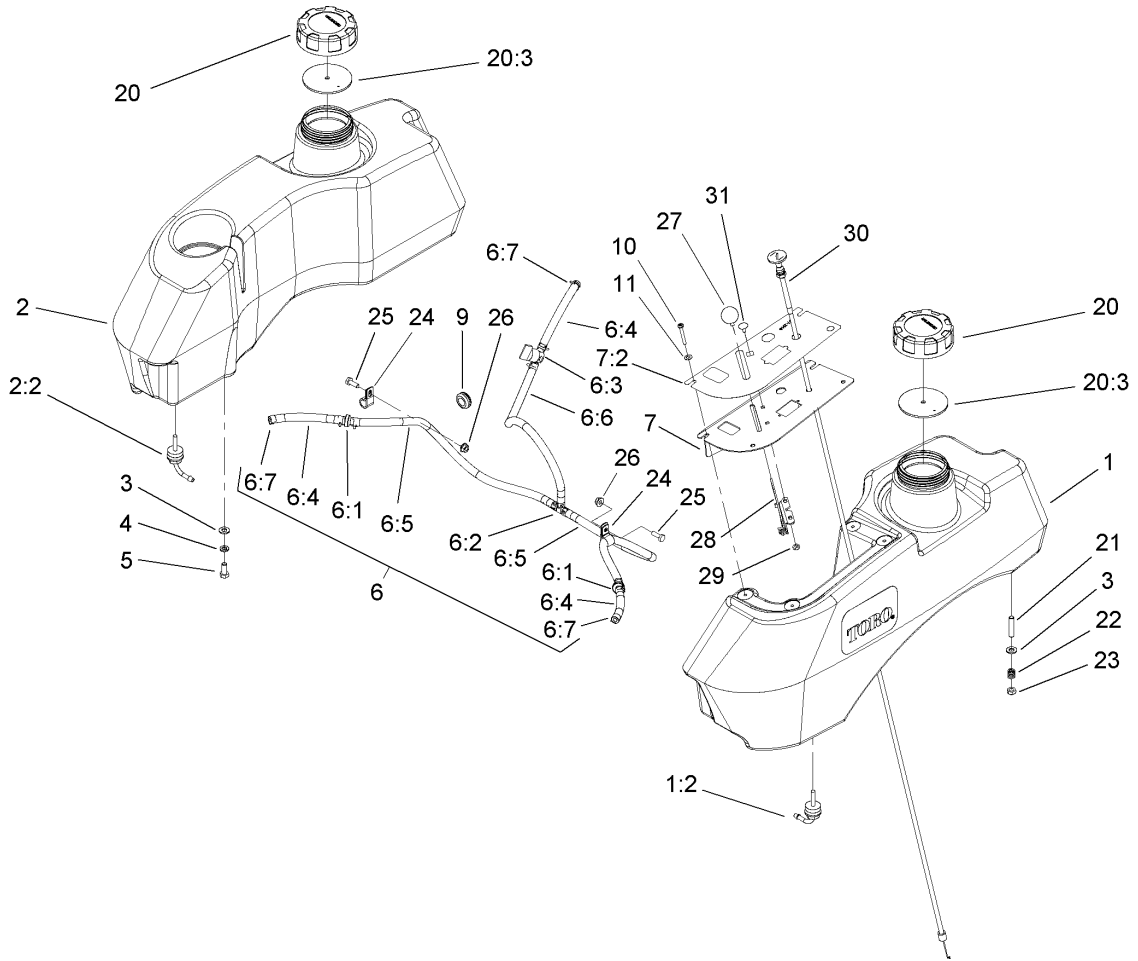


## Height-of-Cut Assembly

Ref	Part No.	Qty.	Description
1	323-9	1	Screw-HH
2	32151-103	1	Ring-Snap
3	3290-357	5	Nut-HHF
4	3296-39	3	Nut-Lock, NI
5	1-652235-01	1	Plate-Lift, Deck
6	1-633080	1	Bushing-Lever, Lift
7	1-653230-01	1	Plate-Lift, Deck
9	323-6	1	Screw-HH
10	323-13	1	Screw-HH
11	1-633082	1	Bushing-Lever, Lift
12	103-2078-03	1	Handle-Lift
13	1-633295	1	Grip-Lever, Lift
14	106-9951	1	Hitch Pin ASM
15	302-19	1	Fitting-Grease
16	103-1918	2	Bushing
17	106-6598-03	1	Lift Arm ASM
18	1-633325	1	Spring-Compression
19	3256-24	1	Washer-Flat
20	1-633068	2	Arm-Lift, Deck
21	323-29	2	Screw-HH
22	108-1051	1	Decal-Deck Height, Outer
23	108-1050	1	Decal-Deck Height, Inner
26	323-8	1	Screw-HH

--	--	--	--

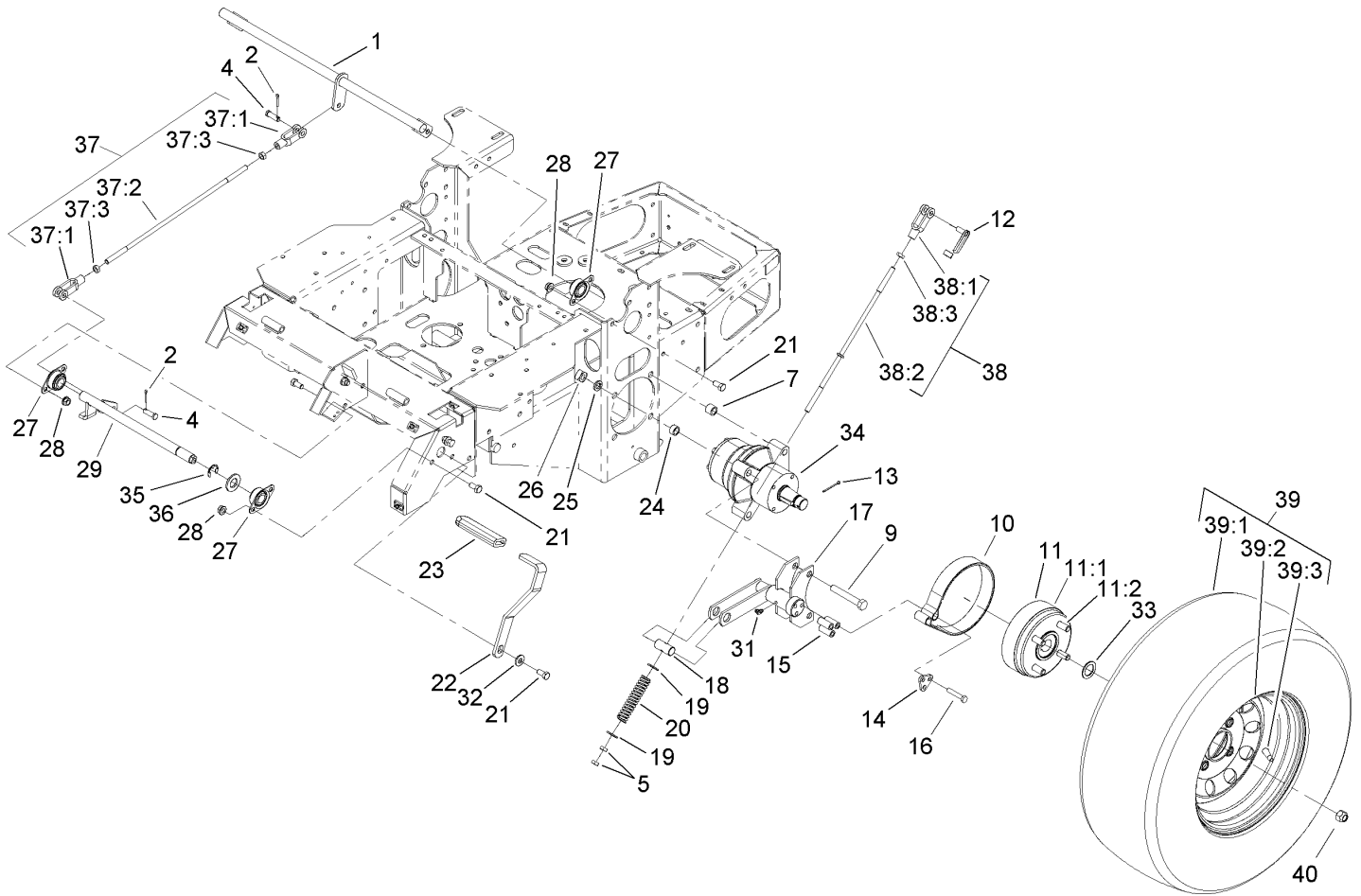




## Fuel System Assembly

Ref	Part No.	Qty.	Description
1	107-2146	1	LH Fuel Tank ASM
1:2	103-2605	1	Fitting-Fuel, Bulkhead
2	106-9975	1	RH Fuel Tank ASM
2:2	103-2605	1	Fitting-Fuel, Bulkhead
3	3256-23	8	Washer-Flat
4	1-805005	4	Washer-Lock
5	322-3	4	Screw-HH
6		1	Fuel Line ASM
6:1	99-5000	2	Valve-Check, Fuel
6:2	99-5005	1	Fitting-Tee, Barbed
6:3	1-603770	1	Valve-Fuel
6:4	99-7190	3	Hose-Fuel
6:5	99-3185	2	Hose-Fuel
6:6	106-8720	1	Hose-Fuel
6:7	1-303077	12	Clamp
7	107-2149	1	Control Panel ASM
7:2	107-2148	1	Decal-Panel, Control
9	1-543296	2	Grommet
10	1-803071	4	Screw
11	1-303435	4	Washer-Spring
20	88-3980	2	Gas Cap ASM
20:3	88-4010	1	Gasket-Cap, Gas
21	1-633023	4	Stud
22	1-633349	4	Spring-Tank, Fuel

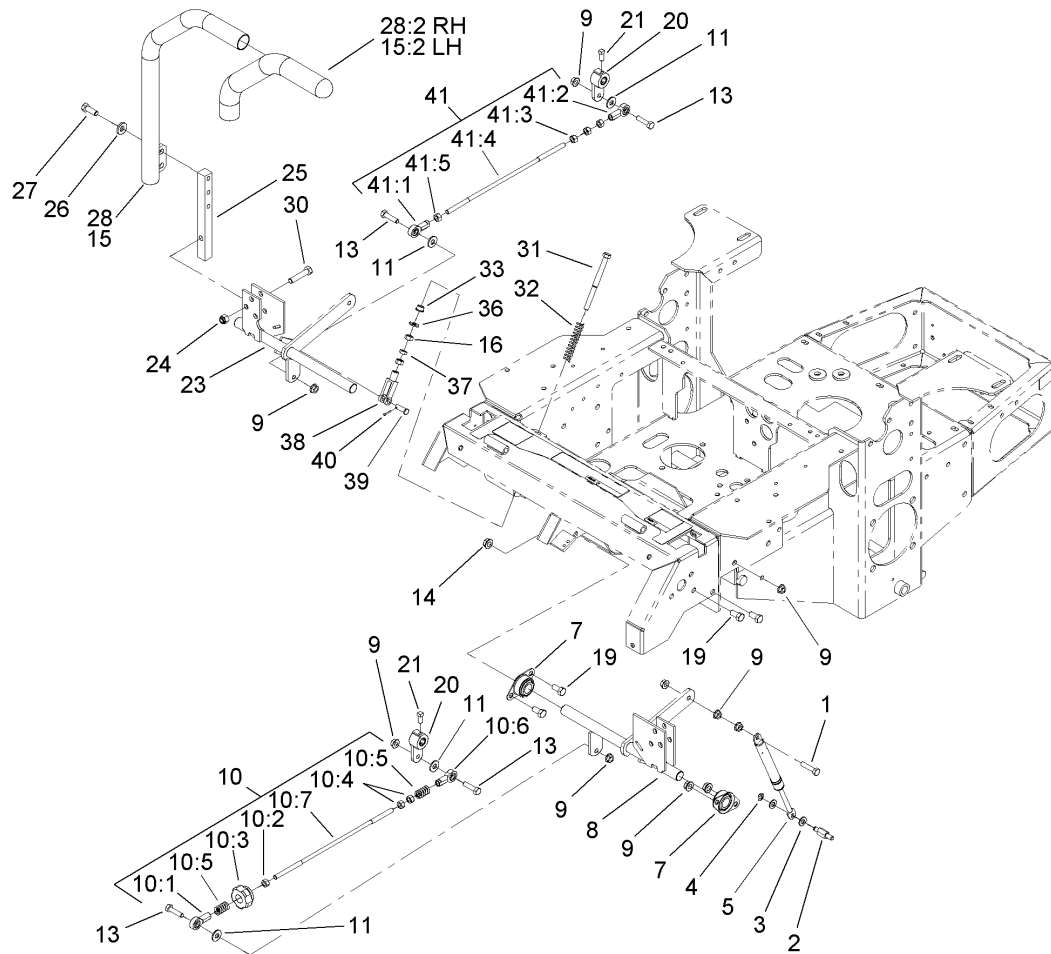
Ref	Part No.	Qty.	Description
23	3296-47	4	Nut-Lock, NI
24	1-513762	2	Clip-Loom
25	321-4	2	Screw-HH
26	32128-33	2	Nut-HF
27	1-513592	1	Knob-Ball
28	1-633696	1	Throttle Cable ASM
29	3296-2	2	Nut-Lock
30	1-603336	1	Control-Choke
31	1-807513	2	Bolt-CARR



## Parking Brake Assembly

Ref	Part No.	Qty.	Description
1	1-652073-03	1	Crank-Brake, Park
2	3272-10	2	Pin-Cotter
4	1-808285	2	Pin-Clevis
5	3219-3	4	Nut-Hex
7	1-653068	4	Spacer-Wheel
9	325-13	8	Screw-HH
10	103-0355	2	Band-Brake
11	103-0590	2	Hub And Wheel ASM
11:1	103-0589	1	Wheel Hub ASM
11:2	1-633926	4	Stud-Wheel
12	103-2399	2	Pin-Spring, Clevis
13	1-806800	2	Pin-Cotter
14	103-0374	2	Retainer-Band, Brake
15	103-0384	6	Spacer
16	322-9	6	Screw-HH
17	103-0352-03	2	Bracket-Brake
18	1-633144	2	Pin-Trunion
19	3256-4	4	Washer-Flat
20	1-633454	2	Spring-Brake
21	323-4	9	Screw-HH
22	1-653074-03	1	Handle-Brake, Park
23	1-633268	1	Grip-Lever, Brake
24	1-653069	4	Spacer-Wheel
25	3253-7	8	Washer-Lock

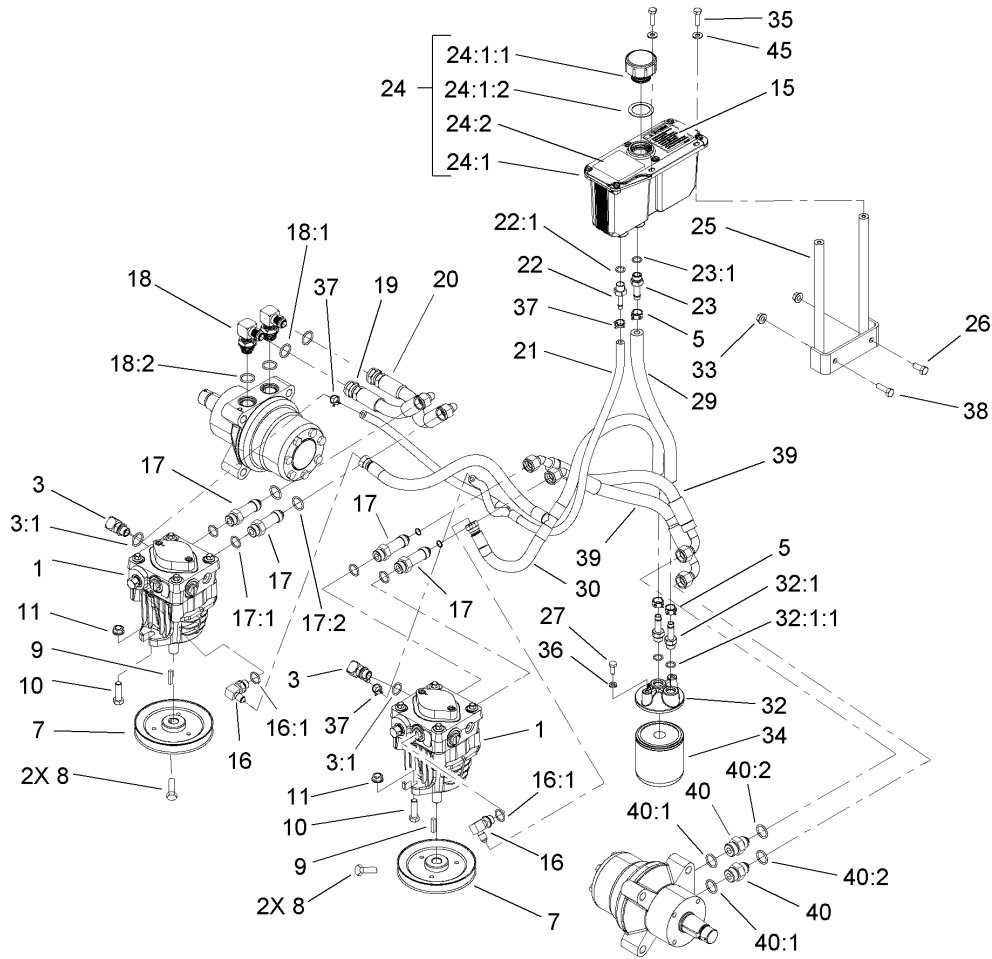
Ref	Part No.	Qty.	Description
26	103-0131	8	Nut-Square
27	1-633102	4	Bearing-Flange, Side
28	3290-357	8	Nut-HHF
29	103-3116	1	Shaft-Brake, Parking
31	1481	2	Fitting-Grease
32	98-5975	1	Washer-Belleville
33	1-523157	2	Washer-Spacer
34	103-5333	2	Motor-Wheel
35	32151-48	1	E-Ring
36	3256-28	1	Washer-Flat
37	103-4328	1	Brake Rod ASM
37:1	1-633131	2	Yoke-Linkage, Brake
37:2	1-653061	1	Linkage-Handle, Brake
37:3	3219-3	2	Nut-Hex
38	103-4329	2	Brake Rod ASM
38:1	1-633131	1	Yoke-Linkage, Brake
38:2	103-0356	1	Rod-Brake
38:3	3219-3	1	Nut-Hex
39	1-653010	2	Wheel And Tire ASM
39:1	1-653160	1	Tire
39:2	1-653158	1	Wheel
39:3	232-27	1	Stem-Valve
40	242-50	8	Nut-Lug



## Motion Control Assembly

Ref	Part No.	Qty.	Description
1	1-403180	2	Screw-HH
2	103-4101	2	Pin-Damper
3	3256-23	4	Washer-Flat
4	32120-35	2	E-Ring
5	103-4079	2	Damper-Control, Motion
7	1-633102	4	Bearing-Flange, Side
8	103-4774	1	Control-Motion, LH
9	32128-20	12	Nut-HF
10	103-4326	1	Tracking Rod ASM
10:1	1-543017	1	Balljoint-RH
10:2	3219-2	1	Nut-Hex
10:3	103-3060	1	Knob-Tracking
10:4	1-804524	2	Nut
10:5	1-323245	2	Spring-Compression
10:6	1-633152	1	Balljoint-Thread, LH
10:7	103-3066	1	Link-Rod, Tracking
11	3256-3	4	Washer-Flat
13	322-6	4	Screw-HH
14	3290-357	6	Nut-HHF
15	106-9982	1	LH Lever ASM
15:2	106-9987	1	Grip-Control, Motion
16	3219-2	4	Nut-Hex
19	323-4	6	Screw-HH
20	103-3717	2	Arm-Control

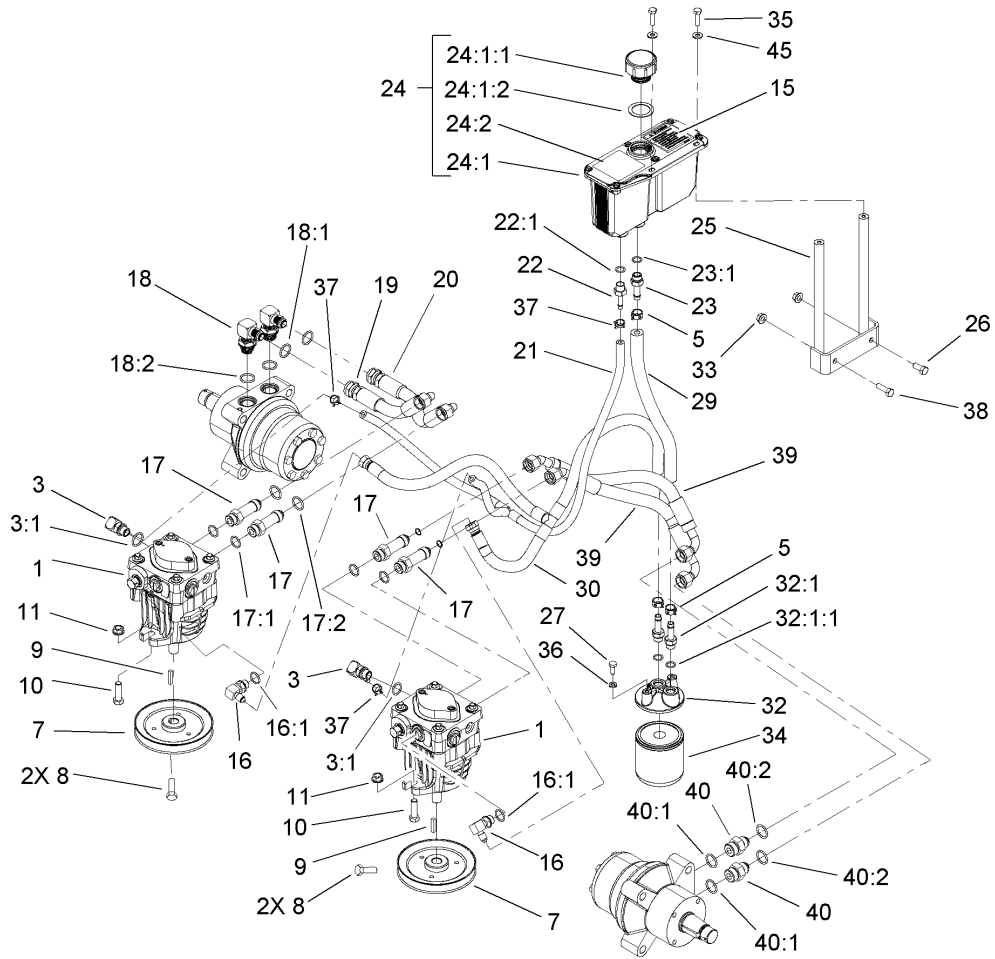
Ref	Part No.	Qty.	Description
21	1-803022	2	Screw-Set
23	103-4773	1	Control-Motion, RH
24	3296-39	6	Nut-Lock, NI
25	103-0407	2	Arm-Shaft, Control
26	98-5975	4	Washer-Belleville
27	323-6	4	Screw-HH
28	106-9983	1	RH Lever ASM
28:2	106-9987	1	Grip-Control, Motion
30	323-9	6	Screw-HH
31	1-603737	2	Bolt-Return, Neutral
32	1-603807	2	Spring-Return, Neutral
33	1-603735	2	Bushing-Flanged
36	3256-2	2	Washer-Flat
37	3220-2	2	Nut-Jam
38	1-303105	2	Yoke-Adjustable
39	1-808280	2	Pin-Clevis
40	3272-5	2	Pin-Cotter
41	103-4327	1	Tracking ASM
41:1	1-543017	1	Balljoint-RH
41:2	1-633152	1	Balljoint-Thread, LH
41:3	1-804524	1	Nut
41:4	103-3066	1	Link-Rod, Tracking
41:5	3219-2	3	Nut-Hex



## Hydraulic System Assembly

Ref	Part No.	Qty.	Description
1	103-1942	2	Pump-HYD
3	103-1799	2	Elbow-90 DEG
3:1	237-42	1	O-Ring
5	103-1988	3	Clamp-Hose
7	1-653156	2	Pulley
8	1-803050	4	Screw-Set
9	1-807272	2	Key
10	323-7	4	Screw-HH
11	3290-357	4	Nut-HHF
15	103-2644	1	Decal-Exhaust
16	103-1802	2	Fitting-Hyd, 90 DEG
16:1	237-42	1	O-Ring
17	103-1940	4	Adapter-Hyd, Straight
17:1	237-79	1	O-Ring
17:2	1-603992	1	O-Ring
18	1-633605	2	Fitting-Hyd, 90 DEG
18:1	1-603992	1	O-Ring
18:2	237-80	1	O-Ring
19	1-653186	1	Hose-Front
20	1-653187	1	Hose-Rear, RH
21	103-2357	1	HYD Hose ASM
22	103-1801	1	Adapter-Straight
22:1	237-42	1	O-Ring
23	103-1912	1	Adapter-Straight

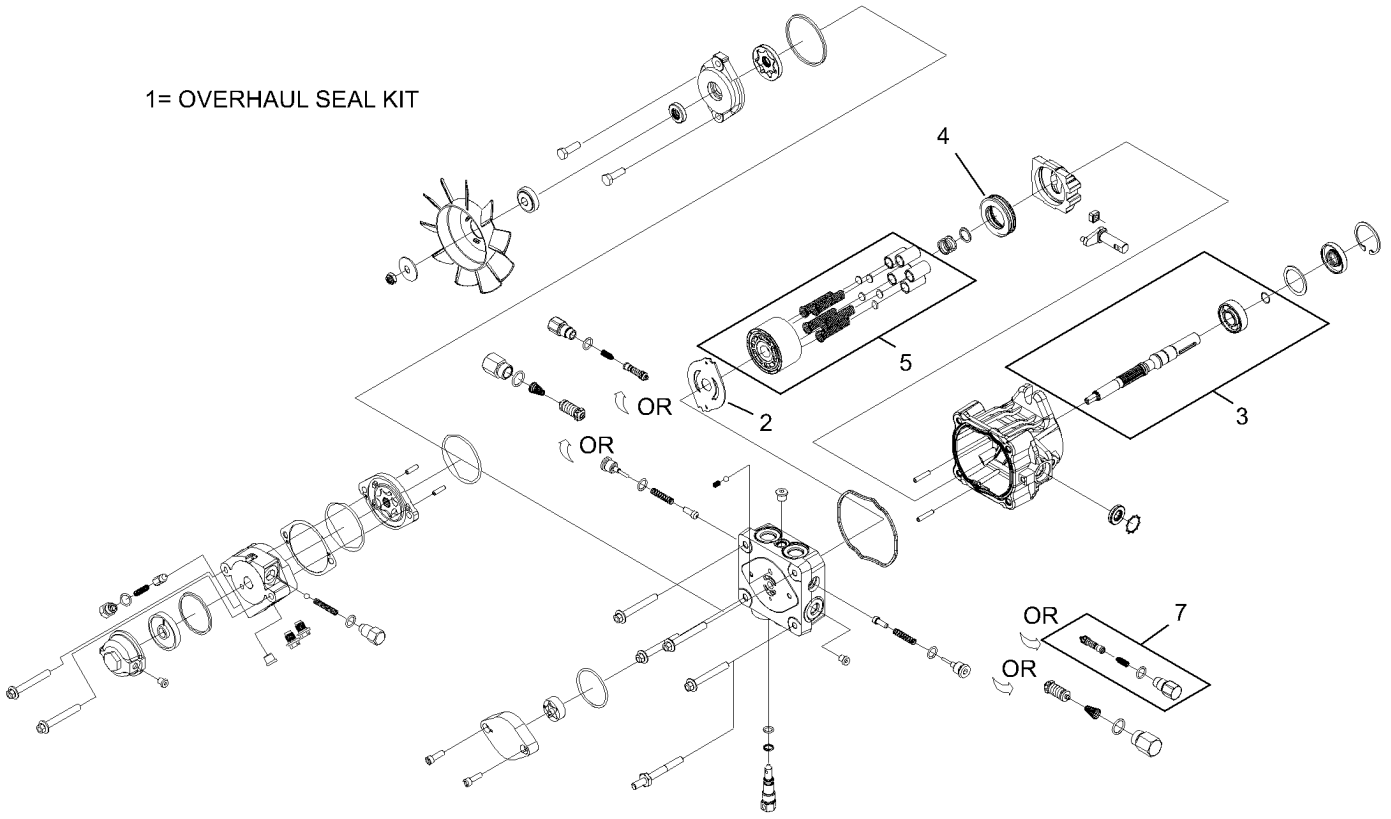
Ref	Part No.	Qty.	Description
23:1	237-42	1	O-Ring
24	103-1947	1	HYD Reservoir ASM
24:1		1	Reservoir-HYD
24:1:1	103-1948	1	Cap-Reservoir, HYD
24:1:2	103-1949	1	Gasket-Cap
24:2	1-523552	1	Decal-Tank, HYD
25	103-3071-03	1	Stand-Reservoir
26	322-3	1	Screw-HH
27	321-3	2	Screw-HH
29	103-3077	1	HYD Hose ASM
30	103-2930	1	HYD Hose ASM
32	103-2889	1	Filter Head ASM
32:1	103-1912	2	Adapter-Straight
32:1:1	237-42	1	O-Ring
33	32128-20	2	Nut-HF
34	1-633750	1	Filter-HYD
34	1-633752	1	Filter-Hyd, Winter
35	321-6	2	Screw-HH
36	1-805004	2	Washer-Lock
37	103-1716	3	Clamp-Hose
38	322-5	1	Screw-HH
39	103-3809	2	Hose-LH
40	1-603991	2	Fitting-Straight
40:1	237-80	1	O-Ring



## Hydraulic System Assembly (continued)

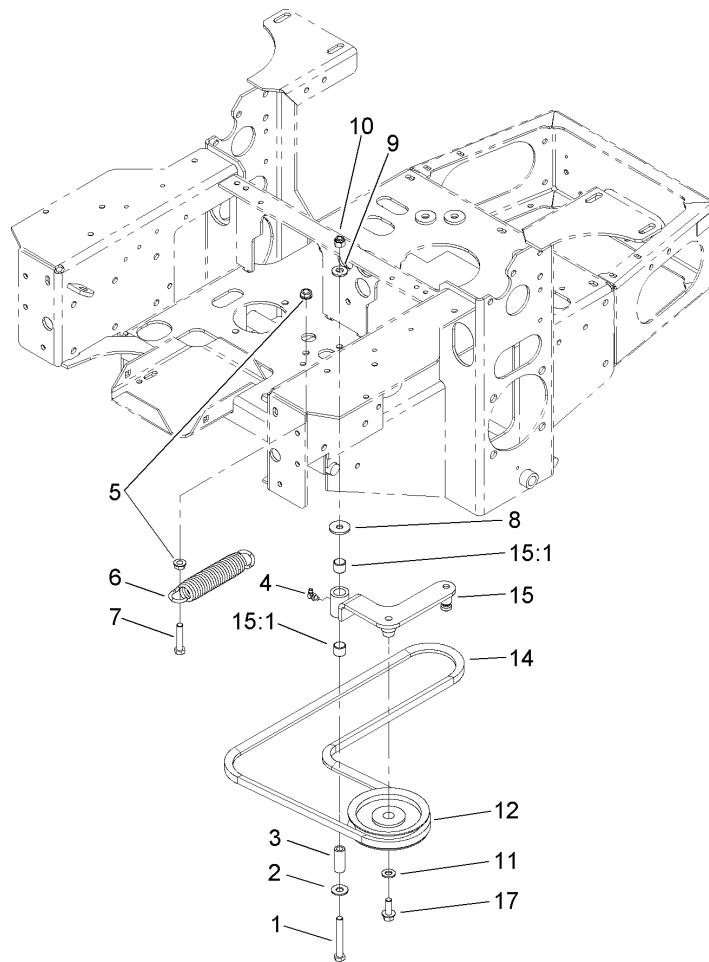
Ref	Part No.	Qty.	Description
40:2	1-603992	1	O-Ring
45	3256-22	2	Washer-Flat

--	--	--	--



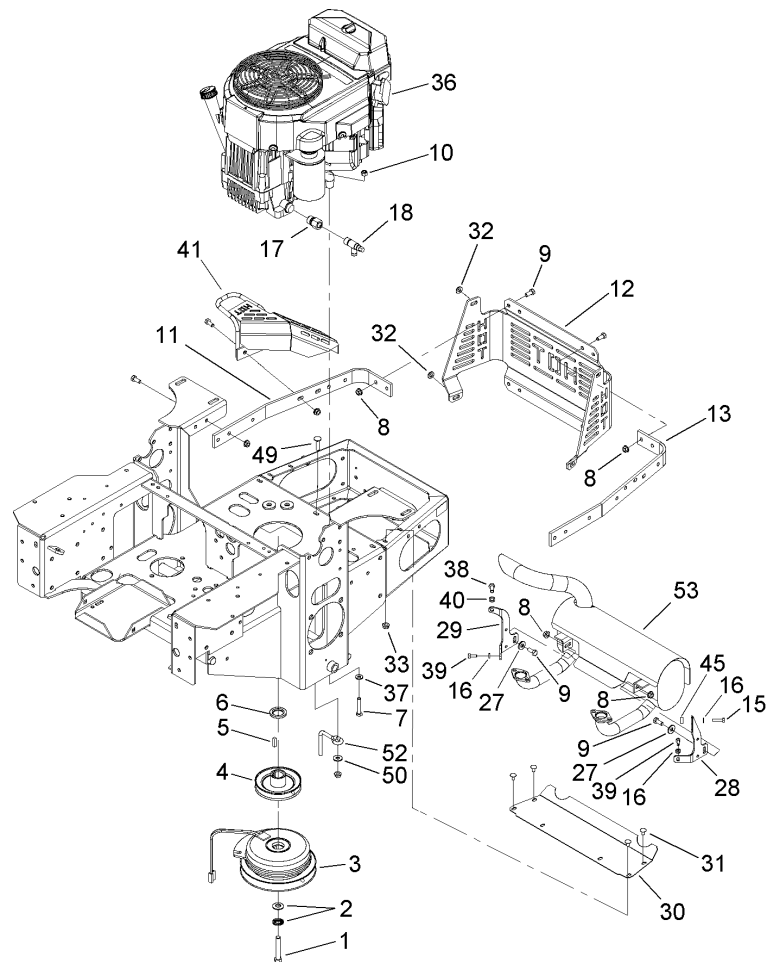
## Hydraulic Pump Assembly No. 103-1942

Ref	Part No.	Qty.	Description
1	105-6184	1	Seal Kit
2	105-6185	1	Plate-Valve
3	103-2664	1	Input Shaft Kit
4	94-6922	1	Bearing-Thrust
5	103-2666	1	Cylinder Block Kit
7	106-2053	1	Shock Valve Kit



## Pump Idler and Belt Assembly

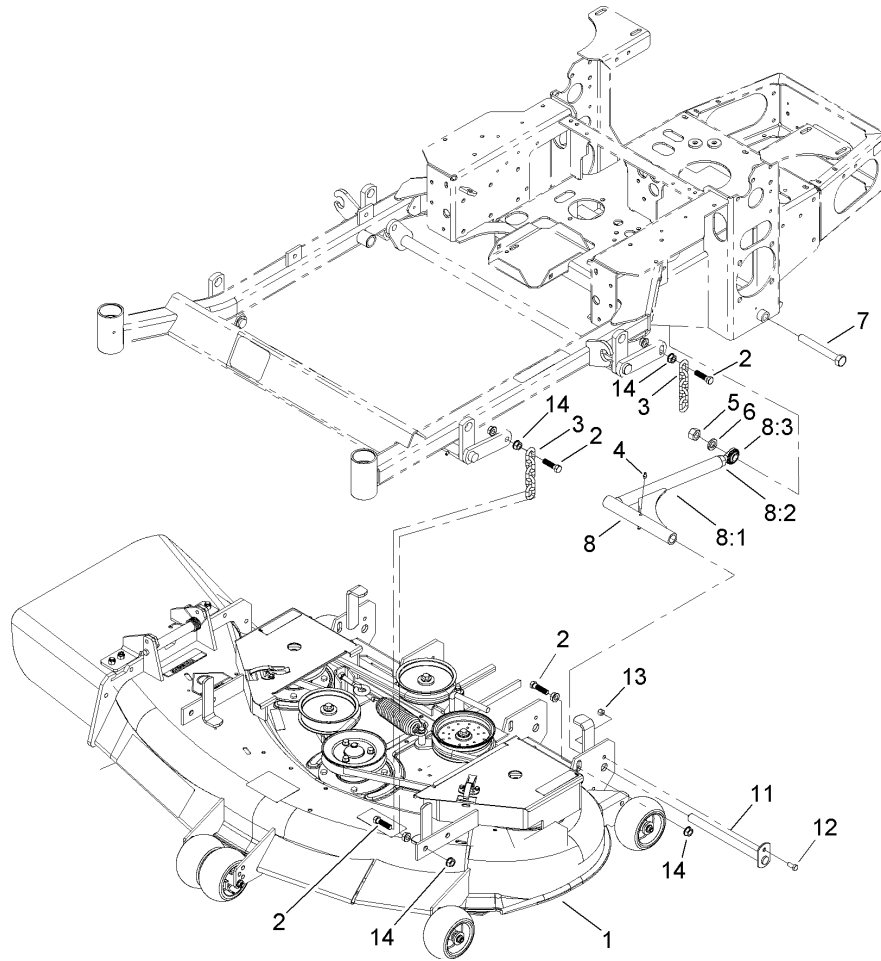
Ref	Part No.	Qty.	Description				
1	323-13	1	Screw-HH				
2	3256-4	1	Washer-Flat				
3	1-603044	1	Bushing				
4	302-40	1	Fitting-Grease				
5	3290-357	2	Nut-HHF				
6	103-4480	1	Spring-Extension				
7	323-9	1	Screw-HH				
8	63-8410	1	Washer				
9	98-5975	1	Washer-Belleville				
10	3296-39	1	Nut-Lock, NI				
11	3256-24	1	Washer-Flat				
12	1-603843	1	Pulley-Idler				
14	107-3960	1	Belt				
15	103-4482	1	Idler Arm ASM				
15:1	103-4681	2	Sleeve-Bearing				
17	3234-11	1	Screw-HHF				



## Engine, Clutch and Muffler Assembly

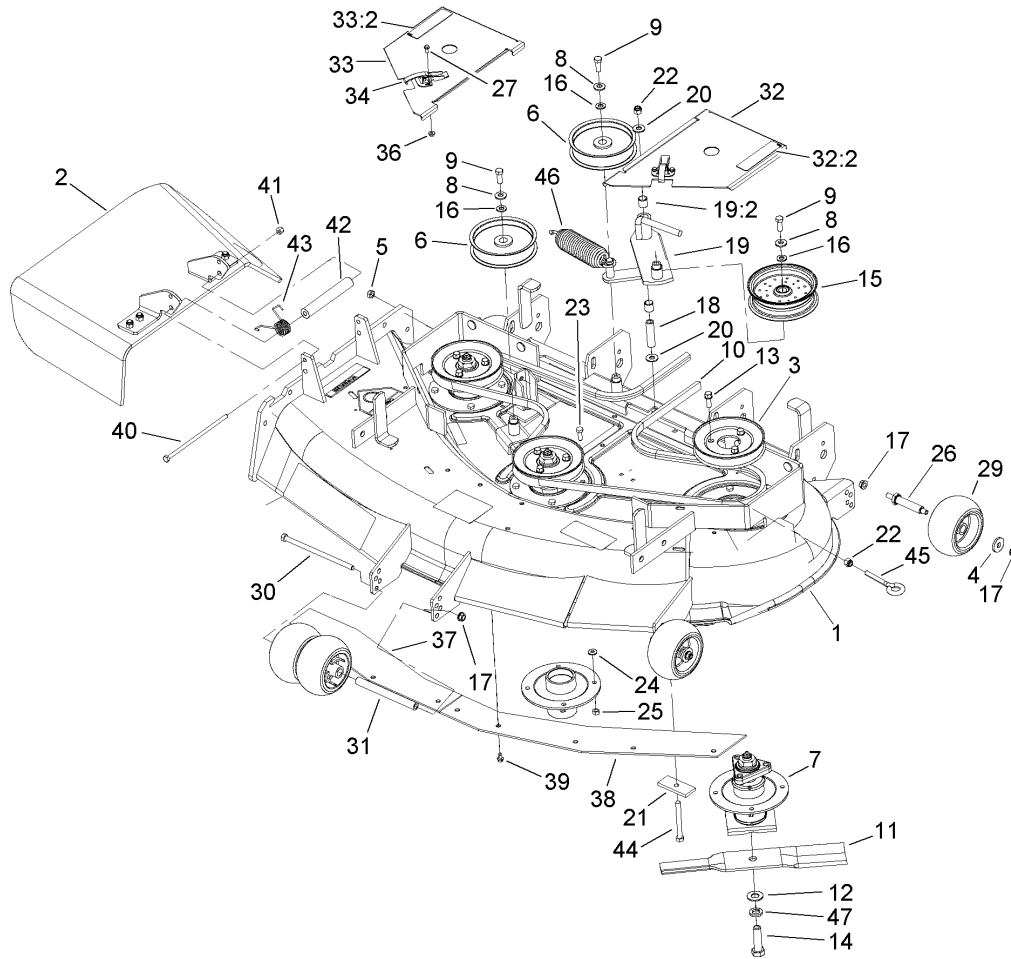
Ref	Part No.	Qty.	Description
1	3212-12	1	Screw-HH
2	1-603610	2	Washer-Spring
3	103-0690	1	Clutch
4	103-3913	1	Pulley
5	1-807259	1	Key
6	103-2308	1	Spacer-Crankshaft
7	322-9	4	Screw-HH
8	32128-20	33	Nut-HF
9	322-3	25	Screw-HH
10	3296-29	4	Nut-Lock, NI
11	103-3078-03	1	Strap-Guard, RH
12	103-3219-03	1	Guard-Rear
13	103-3164-03	1	Strap-Guard, LH
15	33113-025	1	Screw-HH
16	1-805004	3	Washer-Lock
17	103-1966	1	Adapter
18	103-1965	1	Valve-Drain, Oil
27	3256-3	3	Washer-Flat
28	103-4477-03	1	Bracket-Muffler, LH
29	103-4478-03	1	Bracket-Muffler, RH
30	103-2740-03	1	Deflector-Short
31	3229-10	4	Screw-CARR
32	3256-23	4	Washer-Flat
33	32128-33	4	Nut-HF

Ref	Part No.	Qty.	Description
36		1	Engine-Kawasaki, Fh580v-As29
37	1-303334	4	Washer-Spring
38	33114-020	1	Screw-HH
39	33113-016	2	Screw-HH
40	1-805005	1	Washer-Lock
41	103-3218-03	1	Guard-Tailpipe
45	103-3096	1	Spacer
49	3230-3	1	Screw-CARR
50	3256-3	1	Washer-Flat
52	108-1058	1	Rod-Belt
53	103-4483	1	Muffler Kit



### Deck Connection Assembly

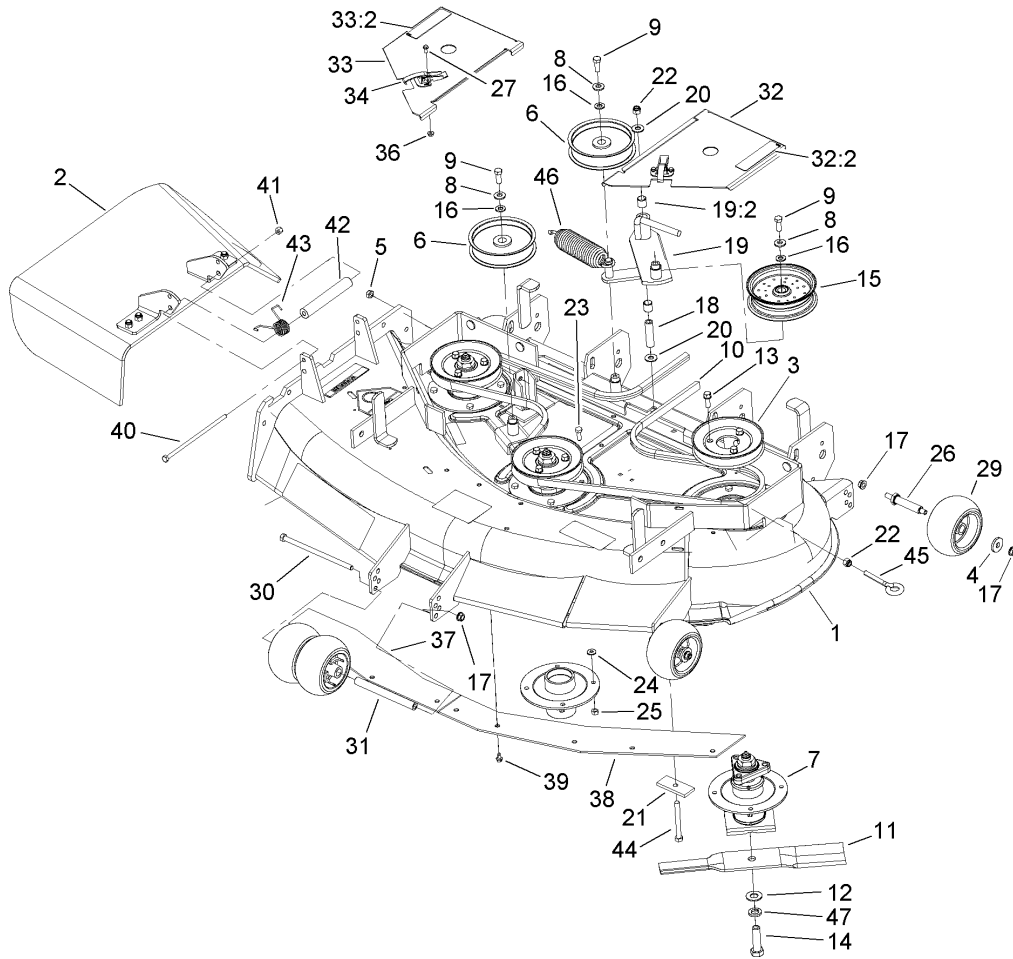
Ref	Part No.	Qty.	Description
1	107-8562	1	Deck ASM
2	103-1898	8	Screw-HH
3	1-633447	4	Chain-Lift, Deck
4	302-19	2	Fitting-Grease
5	3217-11	2	Nut-Hex
6	3253-8	2	Washer-Lock
7	327-11	2	Screw-HH
8	103-1081	2	Strut ASM
8:1	103-1072-01	1	Strut
8:2	3219-6	1	Nut-Hex
8:3	1-633029	1	Balljoint-Spherical
11	1-632199-01	2	Pin-Strut
12	322-3	2	Screw-HH
13	3296-29	2	Nut-Lock, NI
14	32128-37	16	Nut-HF



## Deck Assembly No. 107-8562

Ref	Part No.	Qty.	Description
1	107-8580	1	Deck Decal ASM
2	108-4060	1	Rubber Deflector ASM
3	107-8586	3	Pulley
4	1-373034	3	Washer
5	3217-7	1	Nut-Hex
6	1-613098	2	Pulley-Idler
7	107-8570	3	Spindle Housing ASM
8	98-5975	3	Washer-Belleville
9	323-6	3	Screw-HH
10	98-3780	1	V-Belt-Drive
11	54-0010-03	3	Blade
12	3256-27	3	Washer-Flat
13	92-1624	9	Screw-Mount, Engine
14	51-4060	3	Screw-Blade
15	99-8912	1	Pulley-Idler, Flat
16	3256-24	3	Washer-Flat
17	3290-357	5	Nut-HHF
18	1-603384	1	Bushing-Pivot, Idler
19	99-8914	1	Idler Arm ASM
19:2	1-513034	2	Sleeve-Bearing
20	1-809107	2	Washer-Hardened
21	99-3946-01	1	Plate-Retainer, Bolt
22	3296-39	2	Nut-Lock, NI
23	322-4	12	Screw-HH

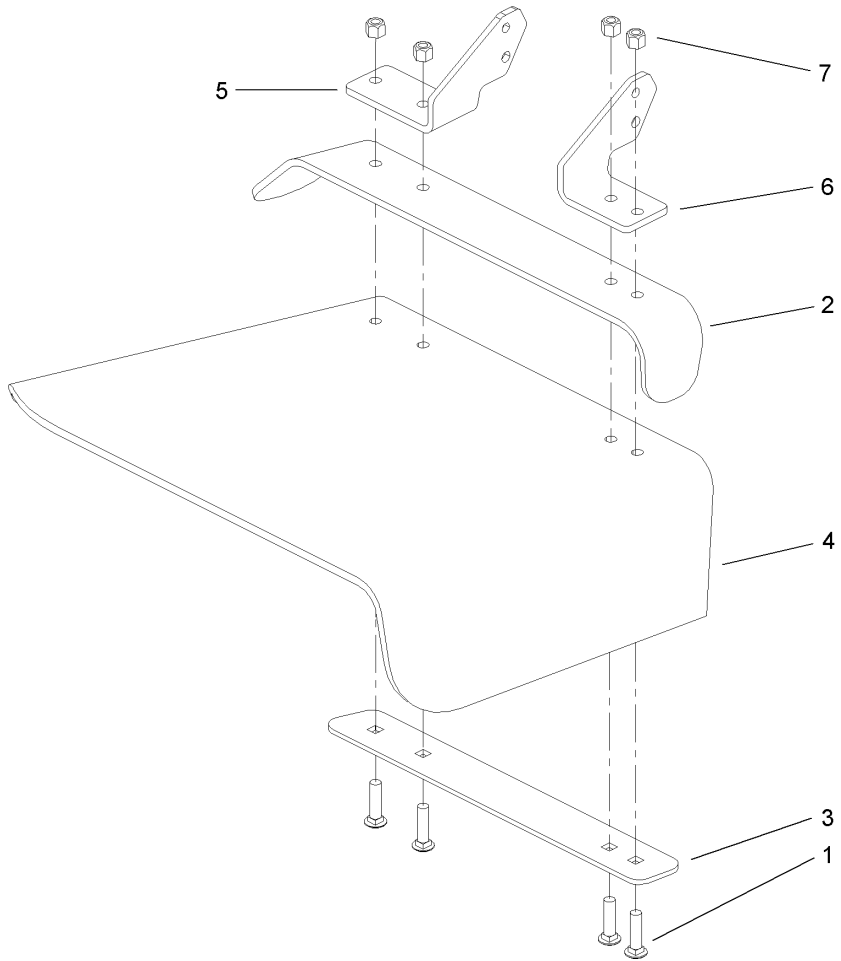
Ref	Part No.	Qty.	Description
24	3256-2	4	Washer-Flat
25	32152-1	12	Nut-Lock, Cone
26	99-2842	3	Spacer
27	3290-321	4	Screw-HWH
29	1-603299	5	Roller-Anti Scalp
30	323-28	1	Screw-HH
31	98-5967	1	Spacer-Wheel
32	99-3928	1	LH Cover ASM
32:2	67-5360	1	Decal-Danger
33	99-3929	1	RH Cover ASM
33:2	67-5360	1	Decal-Danger
34	249-21	2	Clamp-Slotted
36	32128-17	4	Nut-Lock, Flange
37	100-3257-03	1	Plate-Blowout, RH
38	100-3258-03	1	Plate-Blowout, LH
39	12-3270	9	Screw
40	322-50	1	Screw-HH
41	3296-29	1	Nut-Lock, NI
42	105-4622	1	Spacer
43	107-1663	1	Spring-Torsion
44	1-800805	1	Screw-HH
45	94-2547	1	Bolt-Eye
46	103-3330	1	Spring-Extension
47	3253-8	3	Washer-Lock



### Deck Assembly No. 107-8562 (continued)

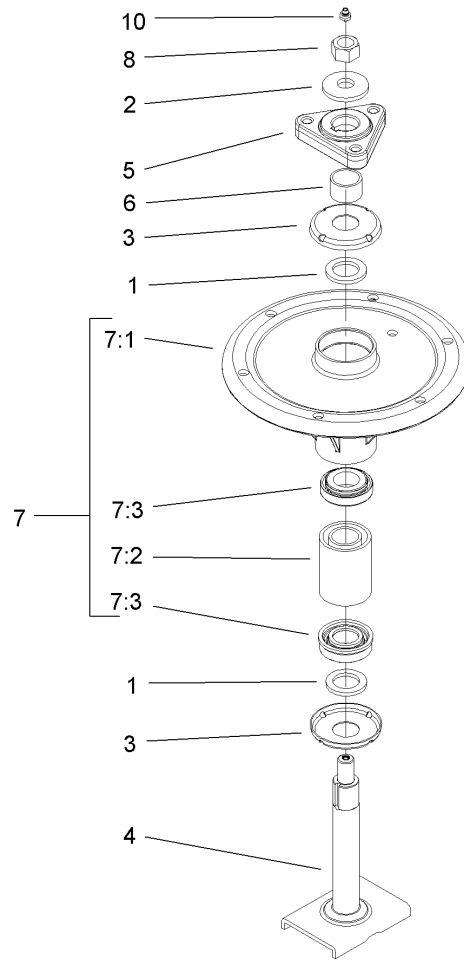
Ref	Part No.	Qty.	Description
1 99	55-4940-03	3	Blade-Lift, High
1 99	104-1300	3	Blade-Atomic



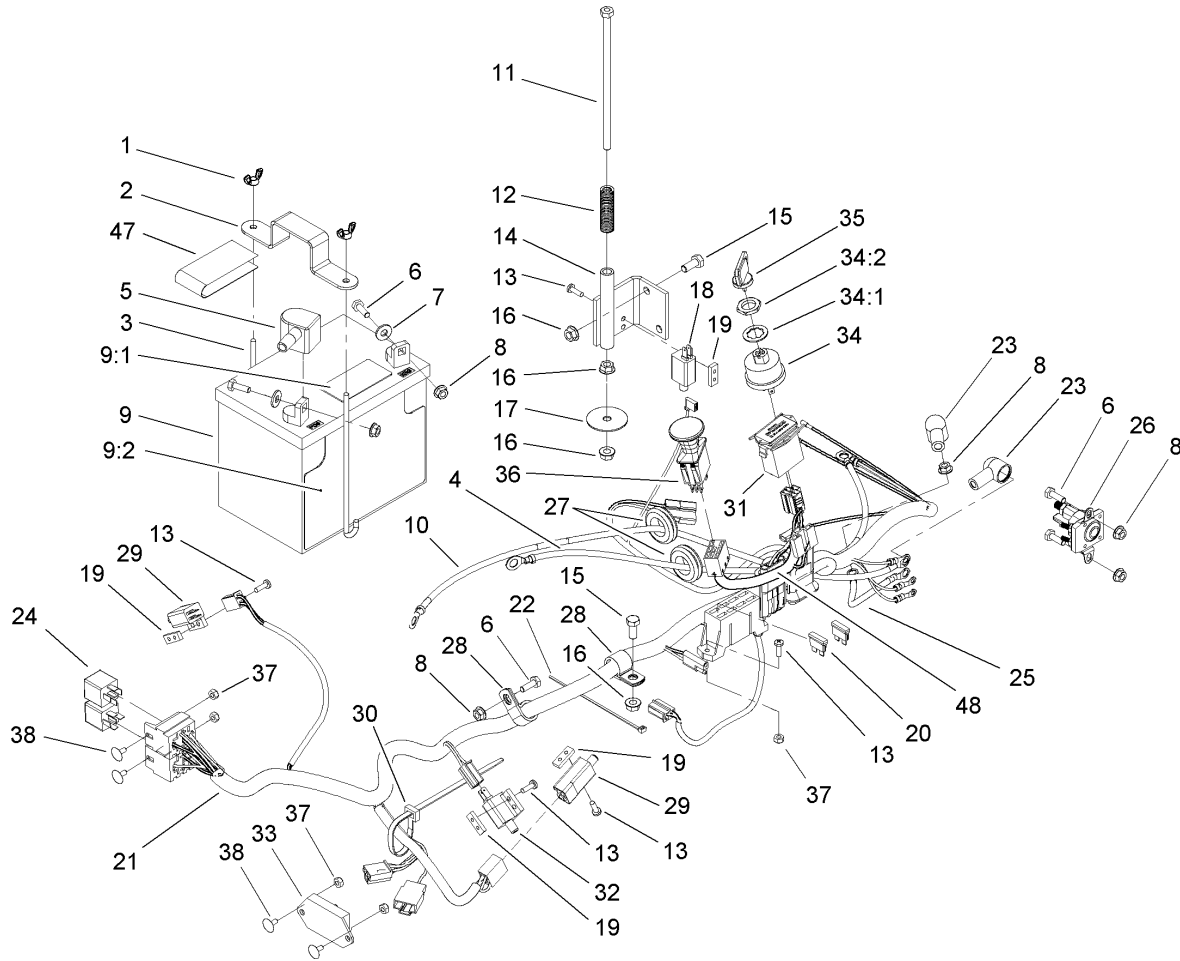
### Rubber Deflector Assembly No. 108-4060

Ref	Part No.	Qty.	Description				
1	3231-4	4	Screw-CARR				
2	106-3246-01	1	Deflector				
3	106-3248-03	1	Strap-Discharge				
4	107-1617	1	Deflector-Rubber				
5	108-4059-01	1	Plate-Hinge, Rear				
6	108-4058-01	1	Plate-Hinge, Front				
7	3296-39	4	Nut-Lock, NI				



## Spindle Assembly No. 107-8570

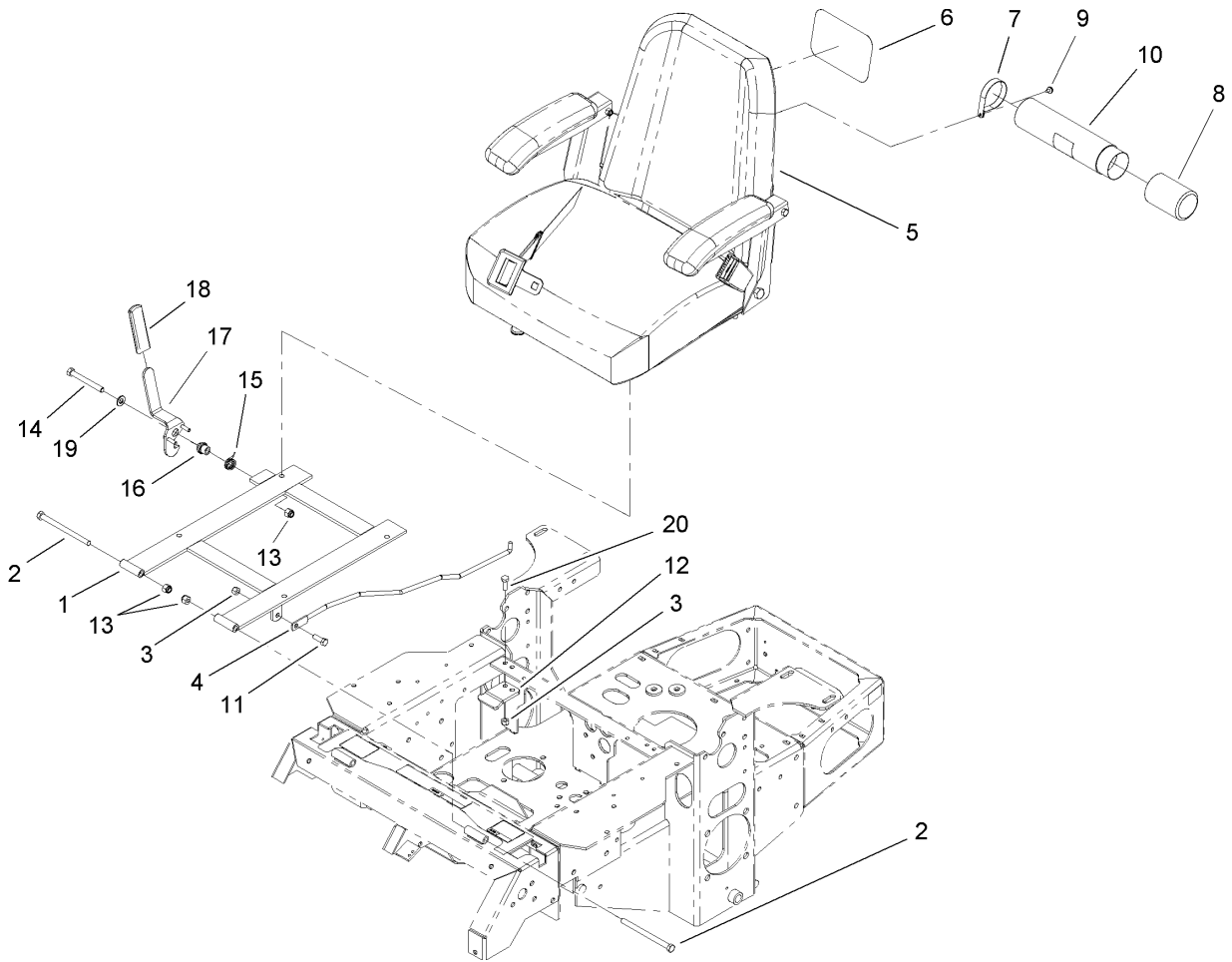
Ref	Part No.	Qty.	Description				
1	3-8514	2	Washer-Thrust				
2	7-4150	1	Washer				
3	106-3204	2	Shield-Bearing				
4	107-8569	1	Spindle ASM				
5	106-3277	1	Hub-Pulley				
6	107-8576	1	Spacer-Bearing				
7	107-8574	1	Spindle Bearing ASM				
7:1		1	Housing-Spindle				
7:2	107-8575	1	Spacer-Bearing				
7:3	113514	2	Bearing-Ball				
8	32146-20	1	Nut-Jam				
10	302-2	1	Fitting-Grease				



## Electrical System Assembly

Ref	Part No.	Qty.	Description
1	1-543792	2	Wingnut
2	1-633652-03	1	Strap-Holddown
3	1-633651	2	Bolt-Holddown
4	103-0705	1	Cable-Ground, Negative
5	1-543391	1	Insulator-Battery
6	321-4	5	Screw-HH
7	3256-2	2	Washer-Flat
8	32128-33	6	Nut-HF
9	105-1692	1	Battery
9:1	104-4163	1	Decal-Battery
9:2	104-4164	1	Decal-Battery
10	103-0707	1	Cable-Battery, Positive
11	1-800282	1	Screw-HH
12	1-523415	1	Spring-Switch, Seat
13	3290-500	10	Screw-PPH
14	1-652072-03	1	Bracket-Switch, Seat
15	322-3	3	Screw-HH
16	32128-20	5	Nut-HF
17	1-653036	1	Washer
18	1-513152	1	Switch-Closed, Normally
19	1-633181	4	Plate-Tapped
20	1-816001	2	Fuse-Blade Type, 20 Amp
21	107-8051	1	Harness-Electrical
22	1-303287	3	Tie-Plastic

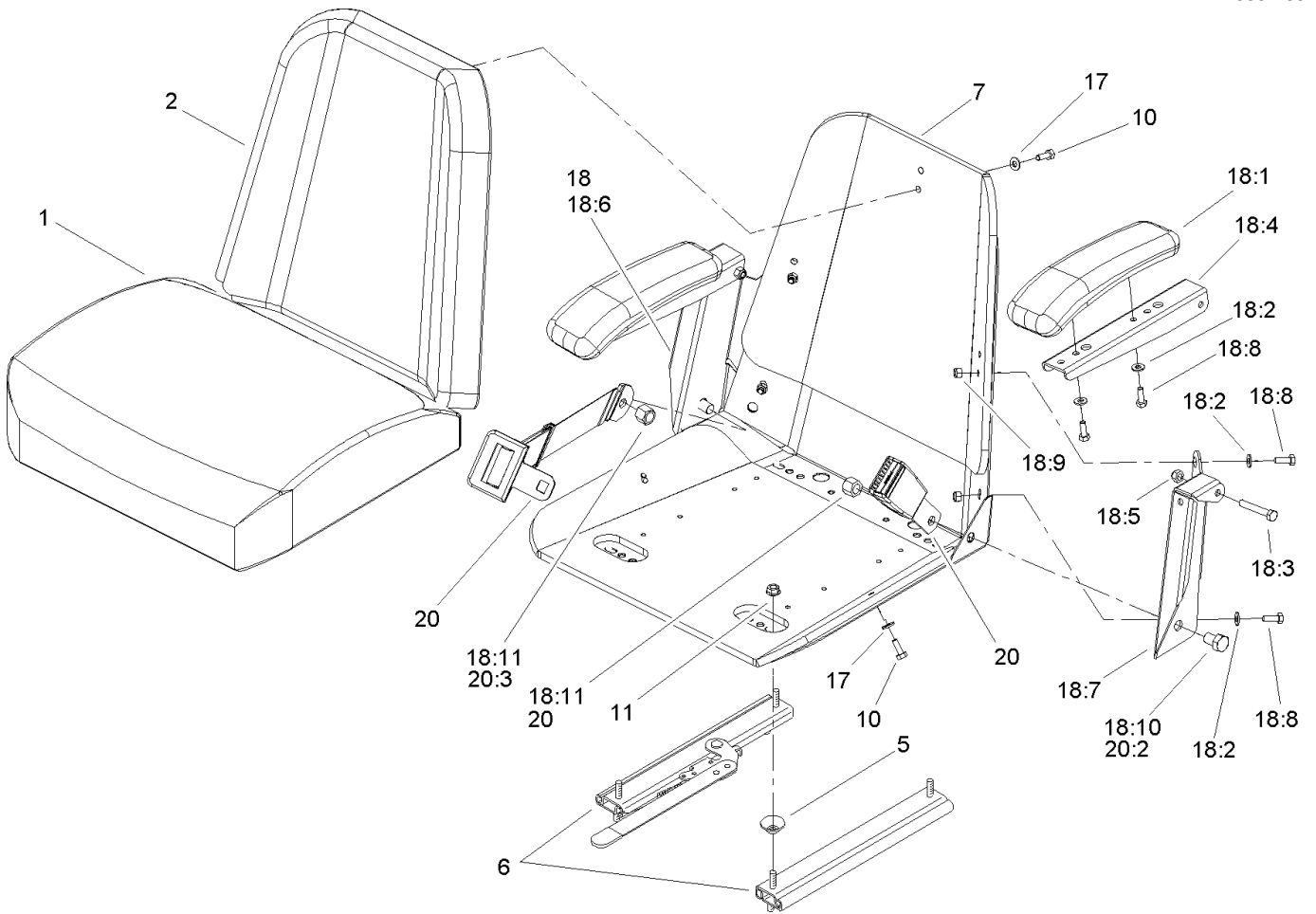
Ref	Part No.	Qty.	Description
23	1-543393	3	Insulator-Solenoid
24	1-643275	2	Relay
25	1-633306	1	Wire-Starter
26	1-513075	1	Switch-Solenoid
27	1-543286	2	Grommet
28	1-633396	2	Clip-Loom
29	1-513051	2	Switch-Open, Normally
30	1-303335	4	Tie-Plastic
31	1-513374	1	Meter-Hour
32	1-633111	1	Switch
33	100-6186	1	Module-Delay, Seat
34	88-9830	1	Key Switch ASM
34:1	3254-5	1	Washer-Tooth
34:2	218-461	1	Nut-HH
35	63-8360	2	Key-Ignition
36	1-633673	1	Switch-Delta
37	3296-2	6	Nut-Lock
38	1-807513	4	Bolt-CARR
47	107-9309	1	Decal-Instructions, Charging
48	107-8054	1	Harness-Electrical, Control Panel



## Seat and Bracket Assembly

Ref	Part No.	Qty.	Description
1	107-3052-03	1	Seat Support Frame ASM
2	323-39	2	Screw-HH
3	3296-29	3	Nut-Lock, NI
4	103-1731	1	Rod-Retainer, Seat
5	107-1867	1	Seat ASM
6	99-4693	1	Decal
7	2412-120	2	R-Clamp
8	104-7048	1	Cap-Housing
9	32104-76	2	Screw
10	104-7050	1	Housing-Manual
11	322-5	1	Screw-HH
12	103-5961	1	Catch-Latch, Seat
13	3296-39	3	Nut-Lock, NI
14	323-20	1	Screw-HH
15	107-0076	1	Spring-Torsion
16	107-0075	1	Bushing-Latch, Seat
17	107-3083	1	Latch ASM
18	62-9130	1	Grip-Handle
19	3256-24	1	Washer-Flat
20	322-4	2	Screw-HH

--	--	--	--

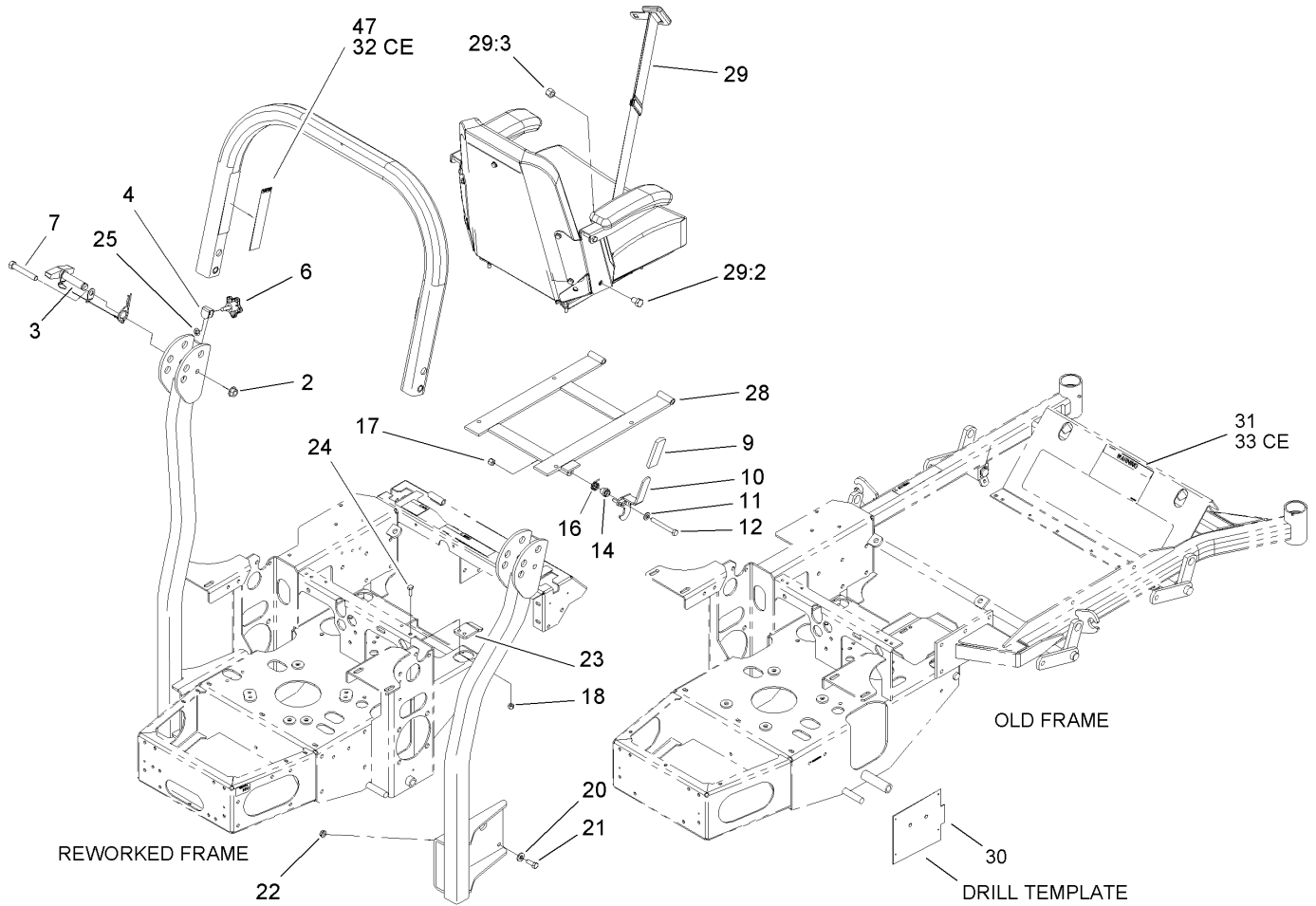


### Seat Assembly No. 107-1867

Ref	Part No.	Qty.	Description
1	103-0290	1	Cushion-Seat, Bottom
2	104-7754	1	Cushion-Seat, Back
5	1-543401	4	Spacer-Track
6	1-643255	1	Track-Seat
7	1-633859	1	Frame-Seat
10	321-30	11	Screw-HH
11	32128-20	4	Nut-HF
17	3256-22	11	Washer-Flat
18	105-3620	1	Armrest Kit
18:1	1-633710	2	Cushion-Armrest
18:2	3256-22	4	Washer-Flat
18:3	322-10	2	Screw-HH
18:4	105-3623	2	Channel-Armrest
18:5	32153-3	2	Nut-Lock, Side
18:6	105-3621	1	Bracket-Armrest, RH
18:7	105-3622	1	Bracket-Armrest, LH
18:8	321-30	6	Screw-HH
18:9	3296-42	4	Nut-Lock, NI
18:10	325-2	2	Screw-HH
18:11	3296-23	2	Nut-Lock, NI
20	103-4469	1	Seatbelt Kit
20:2	3212-4	2	Screw-HH
20:3	3296-38	2	Nut-Lock NI

--	--	--	--



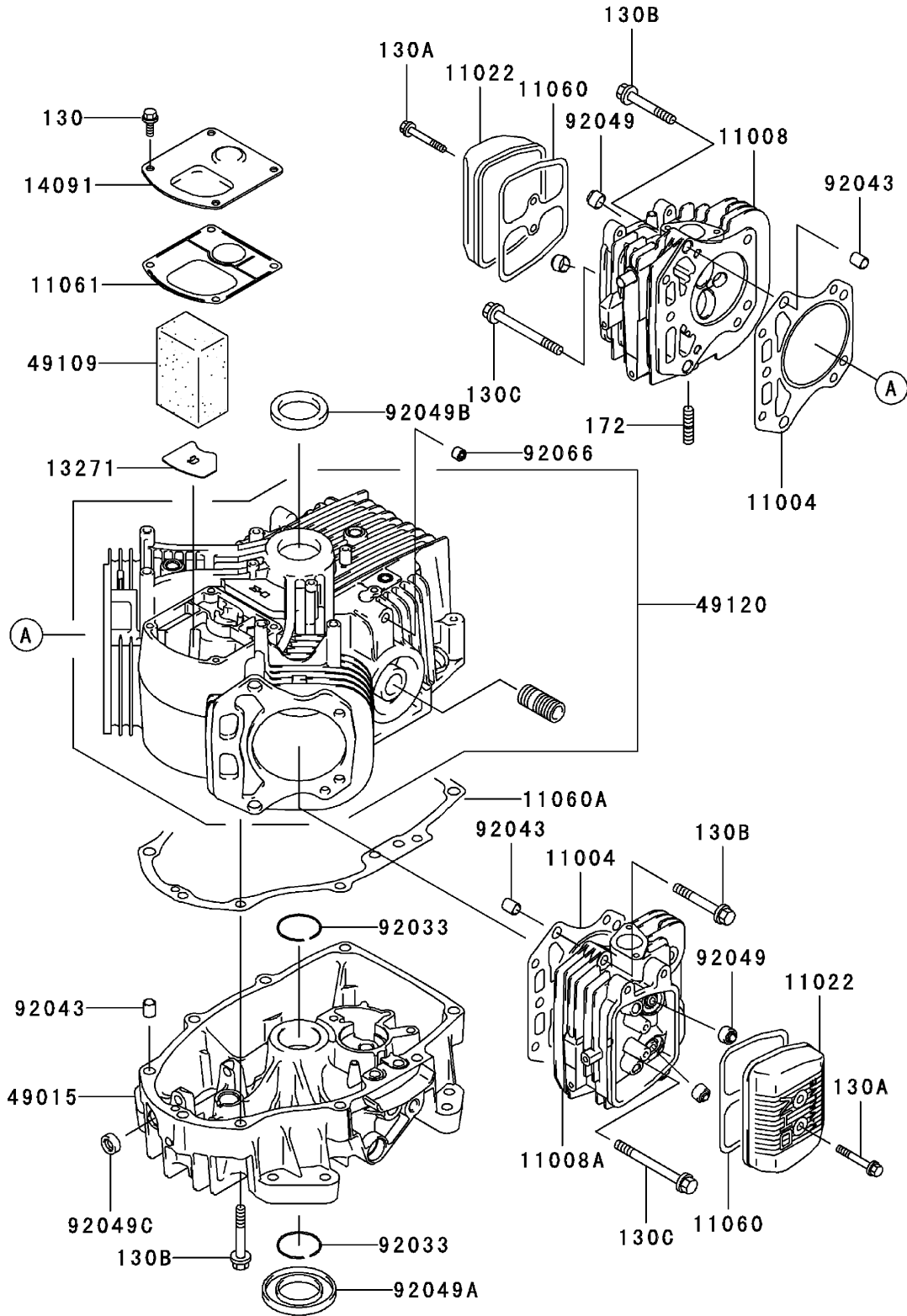


## Roll-Over-Protection-System Assembly No. 107-3066

Ref	Part No.	Qty.	Description
2	32128-23	2	Nut-HF
3	107-3060	2	Pin Latch ASM
4	107-3124	2	Clip
6	106-0887	2	Knob
7	325-13	2	Screw-HH
9	62-9130	1	Grip-Handle
10	107-3083	1	Latch ASM
11	3256-24	1	Washer-Flat
12	323-20	1	Screw-HH
14	107-0075	1	Bushing-Latch, Seat
16	107-0076	1	Spring-Torsion
17	3296-39	1	Nut-Lock, NI
18	3296-29	2	Nut-Lock, NI
20	98-5975	8	Washer-Belleville
21	323-6	8	Screw-HH
22	3290-357	8	Nut-HHF
23	107-3059	1	Catch-Latch, Seat
24	322-4	2	Screw-HH
25	107-3154	2	Nut-Push
28	107-3052-03	1	Seat Support Frame ASM
29	103-4469	1	Seatbelt Kit
29:2	3212-4	2	Screw-HH
29:3	3296-38	2	Nut-Lock NI
30	107-3079	1	Template-Mount, Rops

Ref	Part No.	Qty.	Description
31	107-2112	1	Decal-Warning
32	107-3069	1	Decal-Warning, Folding Rops
33	107-1866	1	Decal-Danger, Slope
47	107-2102	1	Decal-Warning, Folding Rops

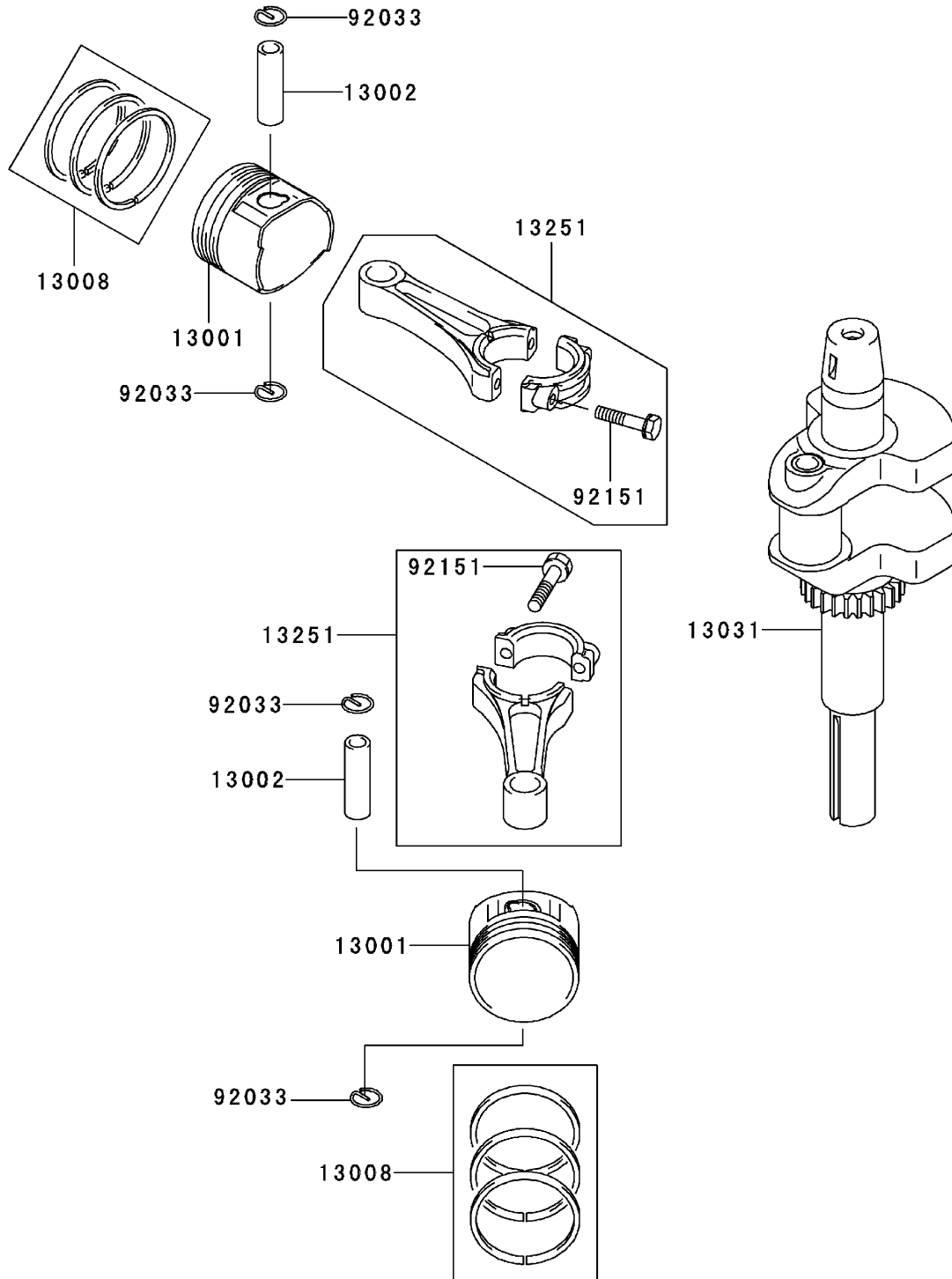
# Cylinder/Crankcase Assembly Kawasaki FH580V AS29



## Cylinder/Crankcase Assembly Kawasaki FH580V AS29

Ref	Part No.	Qty.	Description				
④11004	11004-7016	2	Gasket-Head				
④11008	11008-6043	1	Head-Cylinder, No. 1				
④11008A	11008-7020	1	Head-Cylinder, No. 2				
④11022	11022-7003	2	Case-Rocker				
④11060	11060-7001	2	Gasket-Case, Rocker				
④11060A	11060-7008	1	Gasket-Cover, Crankcase				
④11061	11061-7001	1	Gasket-Breather				
④13271	13271-7016	1	Plate				
④14091	14091-7006	1	Cover				
④49015	49015-6253	1	Cover-Crankcase				
④49109	49109-7002	1	Element-Breather				
④49120	49120-7023	1	Crankcase-Comp				
④92033	92033-7003	2	Ring-Snap				
④92043	92043-7001	6	Pin				
④92049	92049-7001	4	Seal-Oil, Rvc (26x11x10.2)				
④92049A	92049-7015	1	Seal-Oil, Sd (35x62x8 L Hs)				
④92049B	92049-7016	1	Seal-Oil, Sd (35x48x8 R Hs)				
④92049C	92049-7019	1	Seal-Oil, So (8x14x5 Hs)				
④92066	92066-7002	1	Plug				
④130	130B0612	4	Bolt-Flanged				
④130A	130B0640	4	Bolt-Flanged				
④130B	130T0850	17	Bolt-Flanged				
④130C	130T0875	2	Bolt-Flanged				
④172	172G0818	4	Bolt-Stud				

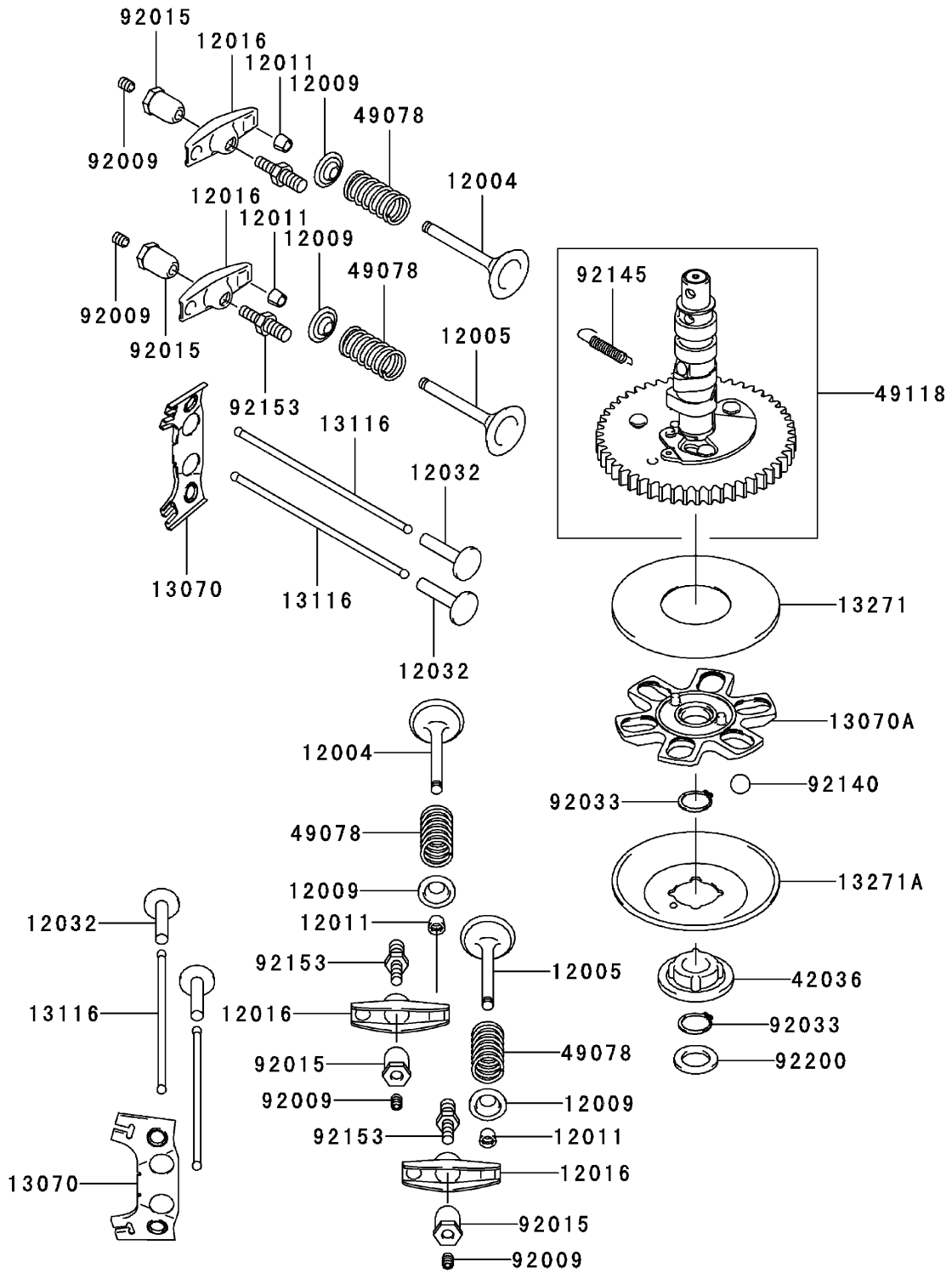
# Piston/Crankshaft Assembly Kawasaki FH580V AS29



## Piston/Crankshaft Assembly Kawasaki FH580V AS29

Ref	Part No.	Qty.	Description				
④13001	13001-7010	2	Piston-Engine				
④13002	13002-7001	2	Pin-Piston				
④13008	13008-6060	2	Piston Ring Set				
④13031	13031-7036	1	Crankshaft-Comp				
④13251	13251-7010	2	Connecting Rod ASM				
④92033	92033-7005	4	Ring-Snap				
④92151	92151-7017	4	Bolt (6x35)				

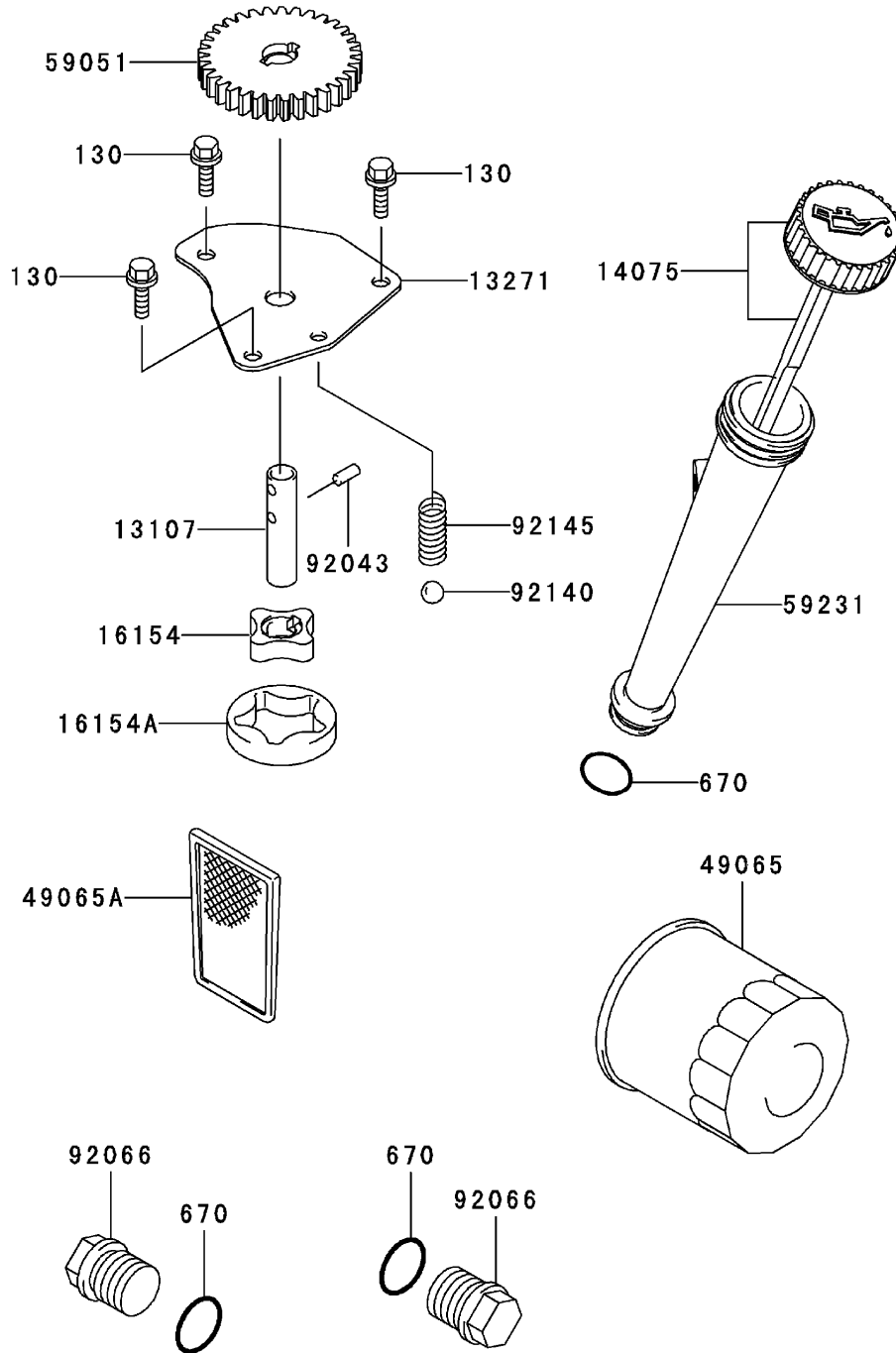
# Valve/Camshaft Assembly Kawasaki FH580V AS29



## Valve/Camshaft Assembly Kawasaki FH580V AS29

Ref	Part No.	Qty.	Description				
④12004	12004-7003	2	Valve-Intake				
④12005	12005-7003	2	Valve-Exhaust				
④12009	12009-7001	4	Retainer-Spring, Valve				
④12011	12011-2056	8	Collet				
④12016	12016-7001	4	Arm-Rocker				
④12032	12032-7001	4	Tappet				
④13070	13070-7001	2	Guide				
④13070A	13070-7004	1	Guide				
④13116	13116-2057	4	Rod-Push				
④13271	13271-7007	1	Plate				
④13271A	13271-7021	1	Plate-Governor				
④42036	42036-7009	1	Sleeve				
④49078	49078-7001	4	Spring-Valve, Engine				
④49118	49118-7004	1	Camshaft-Comp				
④92009	92009-2341	4	Screw				
④92015	92015-2253	4	Nut				
④92033	92033-7001	2	Ring-Snap				
④92140	92140-7002	6	Ball				
④92145	92145-7001	1	Spring				
④92153	92153-7019	4	Bolt				
④92200	92200-7001	1	Washer				

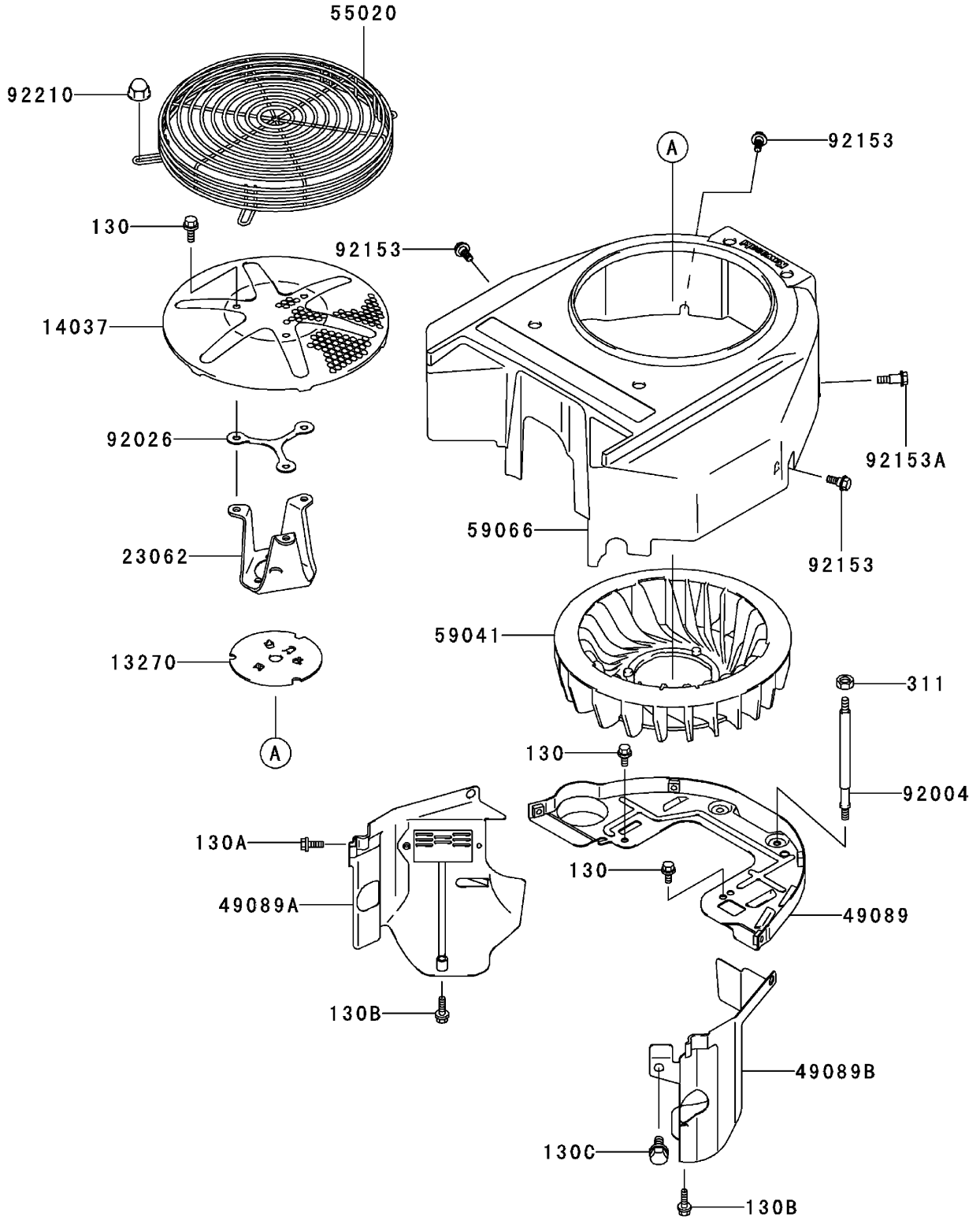
# Lubrication Equipment Assembly Kawasaki FH580V AS29



## Lubrication Equipment Assembly Kawasaki FH580V AS29

Ref	Part No.	Qty.	Description				
④13107	13107-7009	1	Shaft				
④13271	13271-7017	1	Plate				
④14075	14075-7009	1	Cap ASM				
④16154	16154-2053	1	Rotor-Pump (In)				
④16154A	16154-2054	1	Rotor-Pump (Out)				
④49065	49065-2078	1	Filter-Oil				
④49065A	49065-7004	1	Filter-Oil				
④59051	59051-7011	1	Gear-Spur				
④59231	59231-7005	1	Filler				
④92043	92043-7003	2	Pin				
④92066	92066-7003	2	Plug				
④92140	92140-7003	1	Ball				
④92145	92145-7002	1	Spring				
④130	130B0612	3	Bolt-Flanged				
④670	670D2016	3	O-Ring (16mm)				

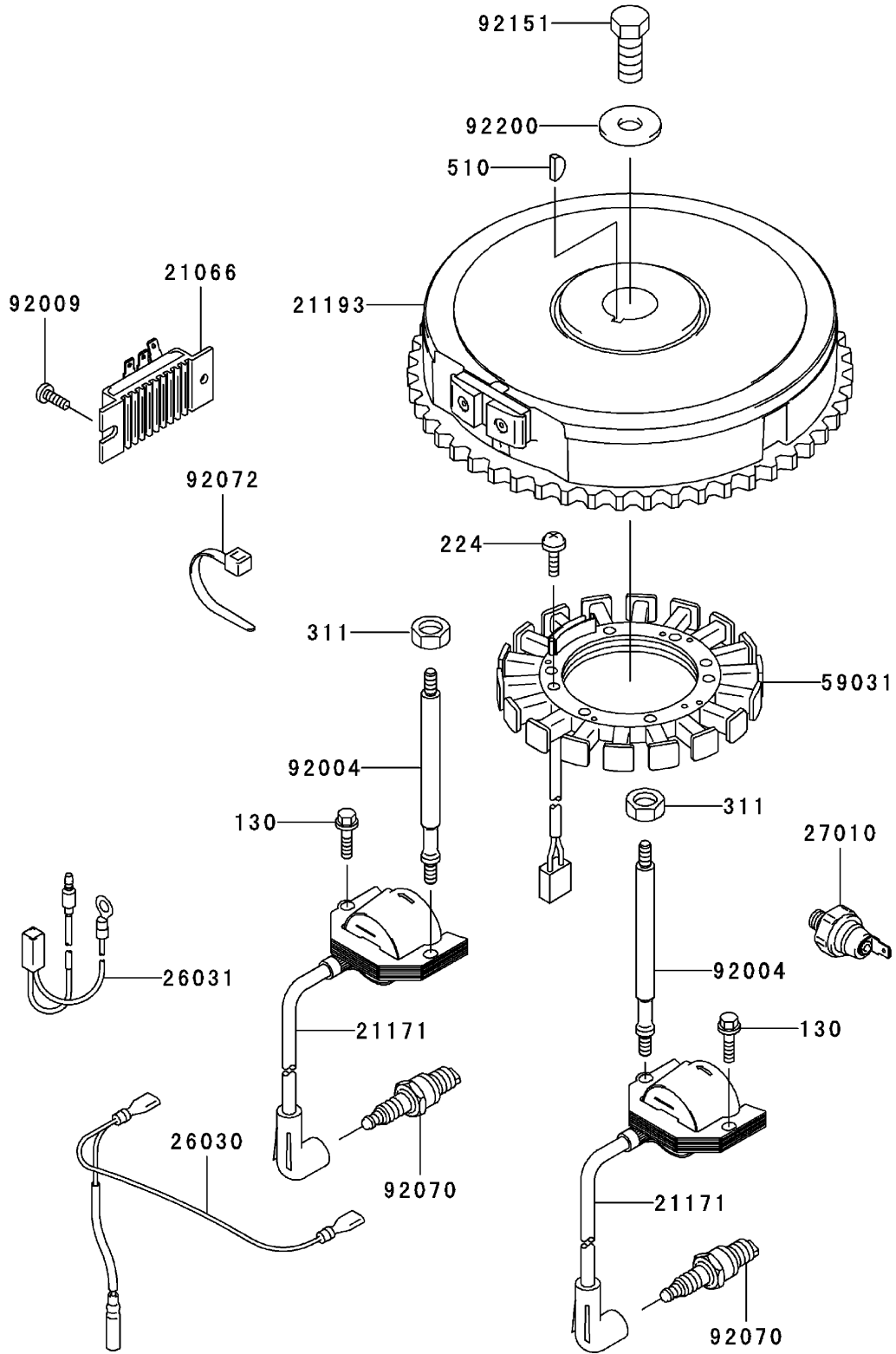
# Cooling Equipment Assembly Kawasaki FH580V AS29



## Cooling Equipment Assembly Kawasaki FH580V AS29

Ref	Part No.	Qty.	Description				
④13270	13270-7007	1	Plate				
④14037	14037-7020-9H	1	Screen				
④23062	23062-7010	1	Bracket-Comp				
④49089	49089-7032	1	Shroud-Engine				
④49089A	49089-7042	1	Shroud-Engine				
④49089B	49089-7043	1	Shroud-Engine				
④55020	55020-7004	1	Guard				
④59041	59041-7010	1	Fan				
④59066	59066-7025	1	Housing-Fan				
④92004	92004-7006	2	Stud				
④92026	92026-7007	1	Spacer				
④92153	92153-7007	3	Bolt				
④92153A	92153-7008	1	Bolt				
④92210	92210-0003	4	Nut				
④130	130B0612	5	Bolt-Flanged				
④130A	130B0616	2	Bolt-Flanged				
④130B	130B0625	2	Bolt-Flanged				
④130C	130B0816	1	Bolt-Flanged				
④311	311B0600	2	Nut-Hex				

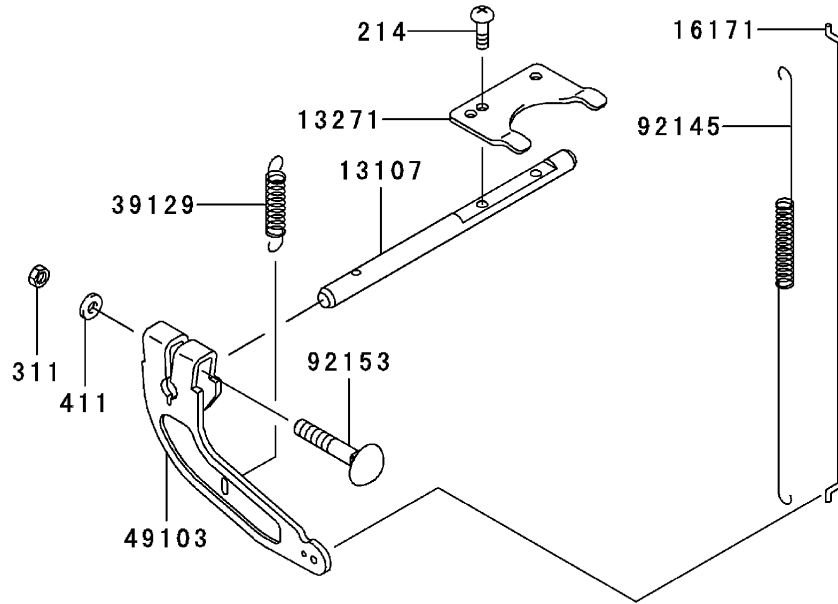
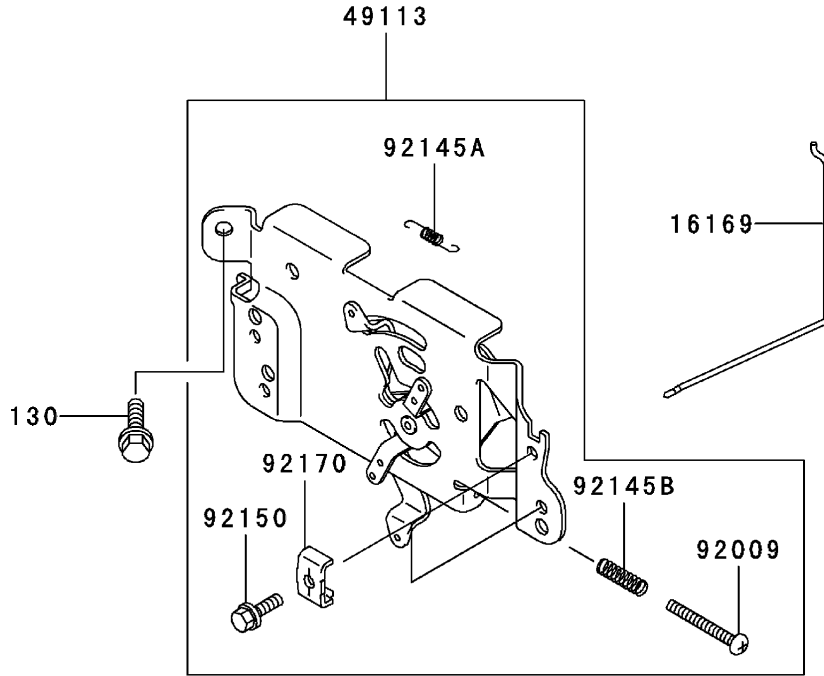
# Electric Equipment Assembly Kawasaki FH580V AS29



## Electric Equipment Assembly Kawasaki FH580V AS29

Ref	Part No.	Qty.	Description				
④21066	21066-7011	1	Regulator-Voltage				
④21171	21171-7013	2	Coil-Assy-Ignition				
④21193	21193-7007	1	Flywheel ASM				
④26030	26030-7001	1	Harness				
④26031	26031-7002	1	Harness				
④27010	27010-7001	1	Switch				
④59031	59031-7001	1	Coil-Charging				
④92004	92004-7009	2	Stud				
④92009	92009-2308	1	Screw				
④92070	92070-7003	2	Plug-Spark (Rcj8y,solid)				
④92072	92072-7003	2	Band				
④92151	92151-2097	1	Bolt (12x30)				
④92200	92200-7002	1	Washer				
④130	130B0620	2	Bolt-Flanged				
④224	224B0520	4	Screw-Pan				
④311	311B0600	2	Nut-Hex				
④510	510A5100	1	Key-Woodruff				

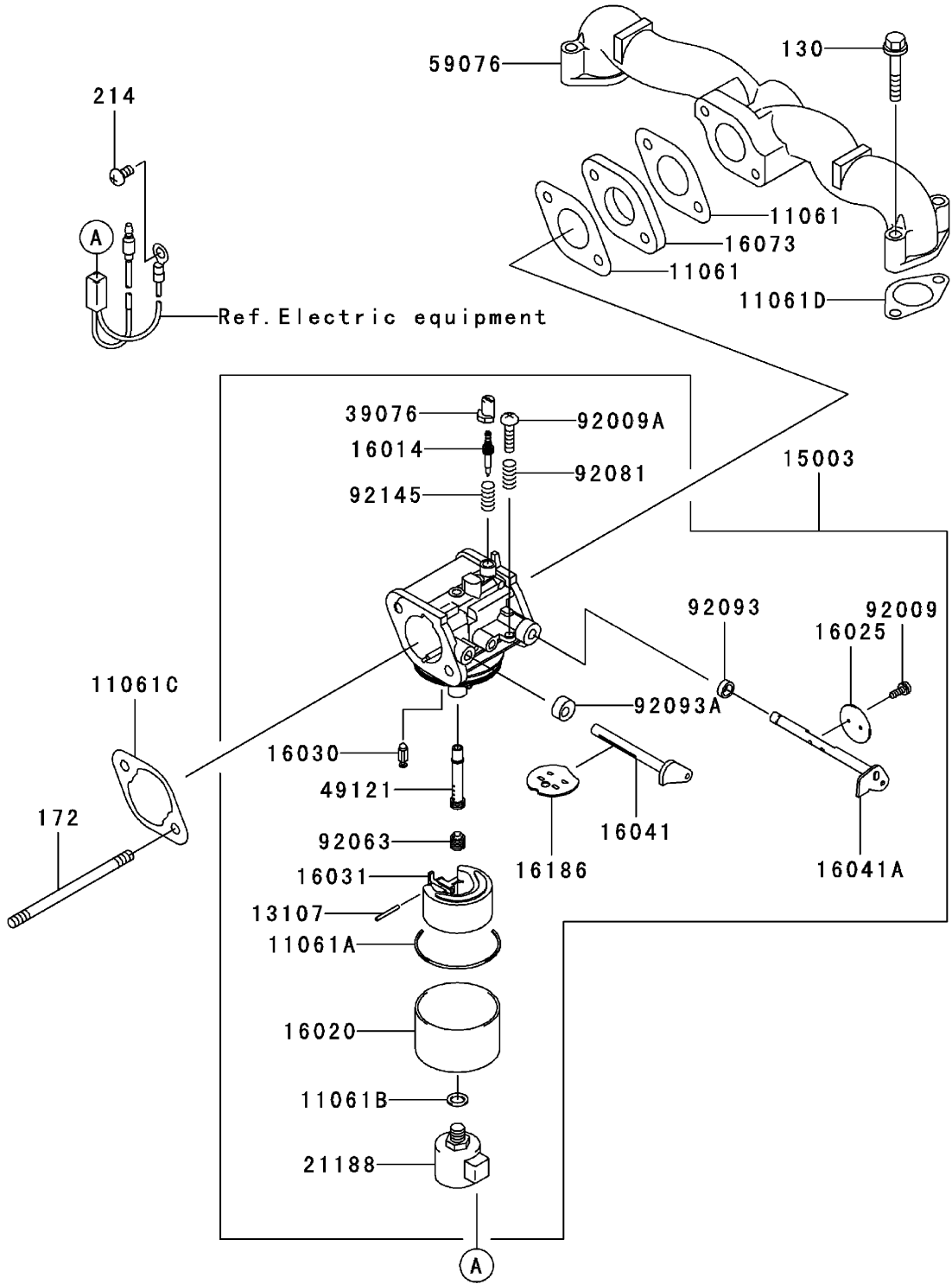
# Control Equipment Assembly Kawasaki FH580V AS29



## Control Equipment Assembly Kawasaki FH580V AS29

Ref	Part No.	Qty.	Description				
④13107	13107-7010	1	Shaft				
④13271	13271-7018	1	Plate				
④16169	16169-7010	1	Link-Choke				
④16171	16171-7001	1	Link				
④39129	39129-7003	1	Spring-Governor				
④49103	49103-7004	1	Arm-Governor				
④49113	49113-7011	1	Panel-Control				
④92009	92009-7007	1	Screw (4x35)				
④92145	92145-7003	1	Spring				
④92145A	92145-7004	1	Spring				
④92145B	92145-7005	1	Spring				
④92150	92150-2182	2	Bolt (5x18)				
④92153	92153-7033	1	Bolt (6x35)				
④92170	92170-7001	2	Clamp				
④130	130B0612	2	Bolt-Flanged				
④214	214B0408	2	Screw-Pan				
④311	311B0600	1	Nut-Hex				
④411	411b0600	1	Washer-Plain				

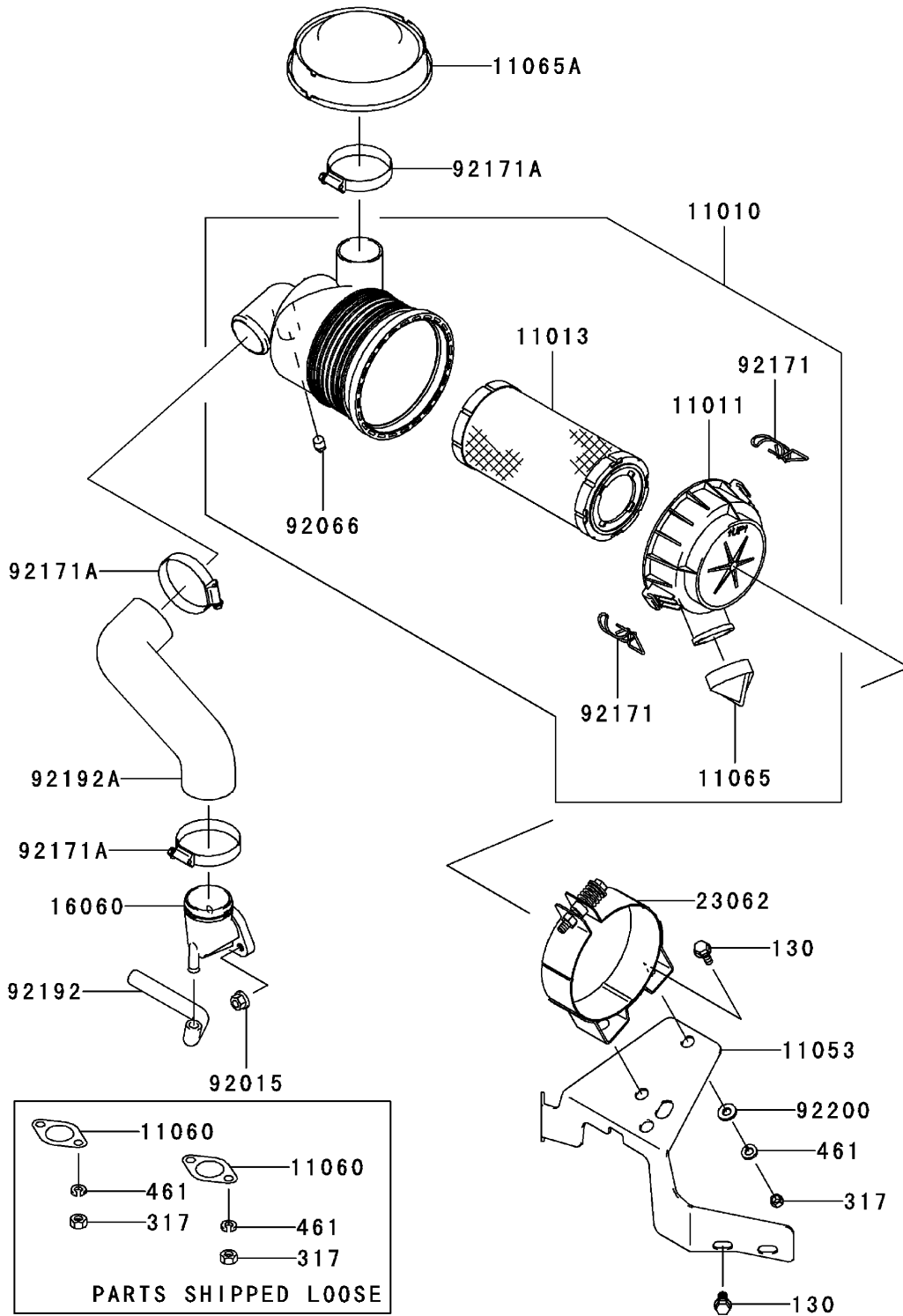
# Carburetor Assembly Kawasaki FH580V AS29



## Carburetor Assembly Kawasaki FH580V AS29

Ref	Part No.	Qty.	Description				
④11061	11061-7004	2	Gasket-Insulator				
④11061A	11061-7009	1	Gasket-Chamber				
④11061B	11061-7010	1	Gasket-Screw				
④11061C	11061-7018	1	Gasket-Cleaner, Air				
④11061D	11061-7019	2	Gasket				
④13107	13107-7018	1	Shaft				
④15003	15003-7100	1	Carburetor ASM				
④16014	16014-7007	1	Screw-Air, Pilot				
④16020	16020-7003	1	Chamber-Float				
④16025	16025-7006	1	Valve-Throttle				
④16030	16030-7003	1	Valve-Float				
④16031	16031-7002	1	Float				
④16041	16041-7016	1	Shaft-Carburetor, Choke				
④16041A	16041-7018	1	Shaft-Carburetor, Throttle				
④16073	16073-7007	1	Insulator				
④16186	16186-7004	1	Choke Valve ASM				
④21188	21188-7002	1	Solenoid				
④39076	39076-7001	1	Limiter				
④49121	49121-7004	1	Nozzle-Main				
④59076	59076-7001	1	Manifold-Intake				
④92009	92009-2083	2	Screw				
④92009A	92009-2349	1	Screw				
④92063	92063-7062	1	Jet-Main, No. 110				
④92081	92081-2234	1	Spring				
④92093	92093-2100	1	Seal				
④92093A	92093-7003	1	Seal				
④92145	92145-7015	1	Spring				
④130	130B0635	4	Bolt-Flanged				
④172	172G0690	2	Bolt-Stud				
④214	214B0510	1	Screw-Pan				

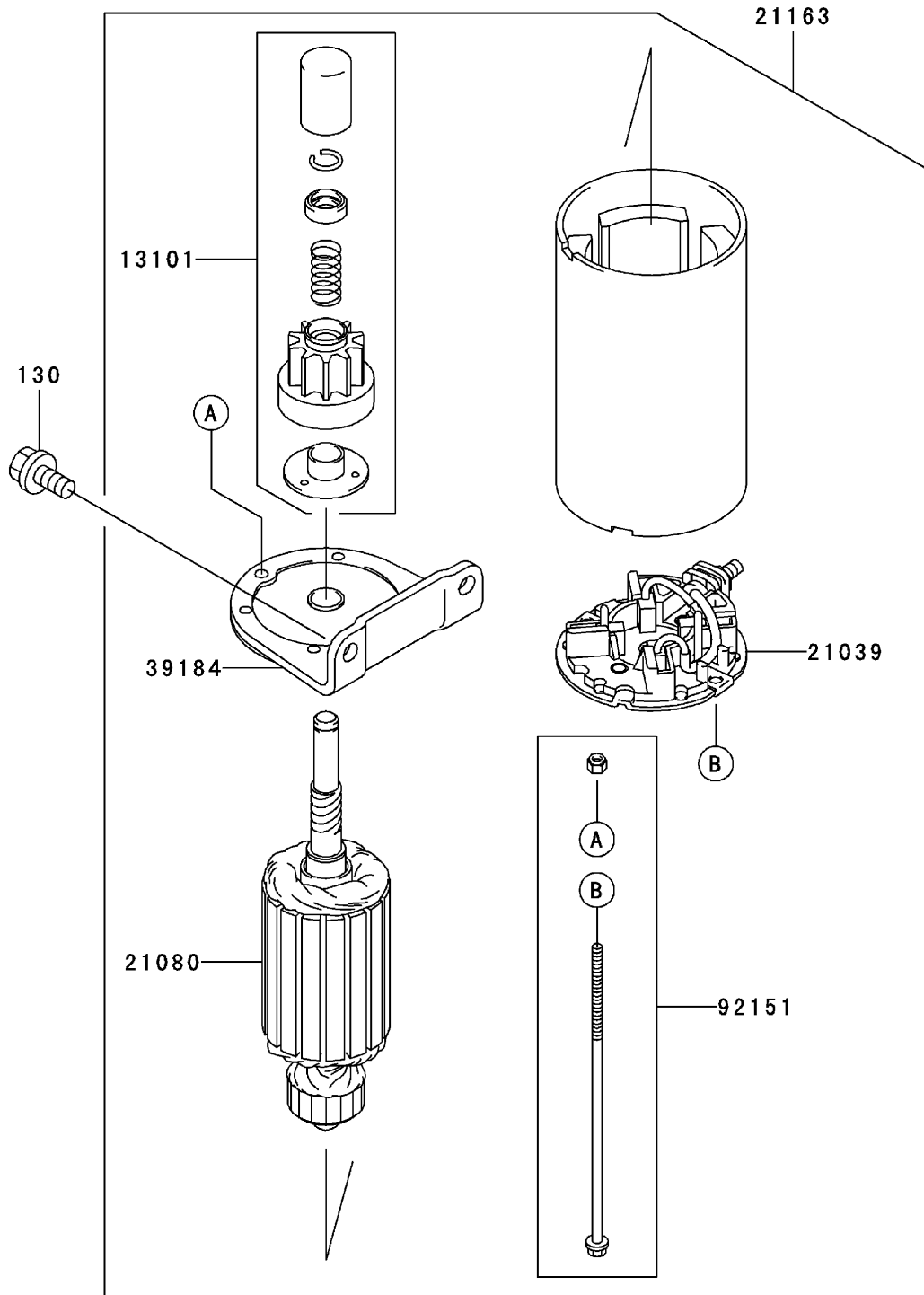
# Air Filter/Muffler Assembly Kawasaki FH580V AS29



## Air Filter/Muffler Assembly Kawasaki FH580V AS29

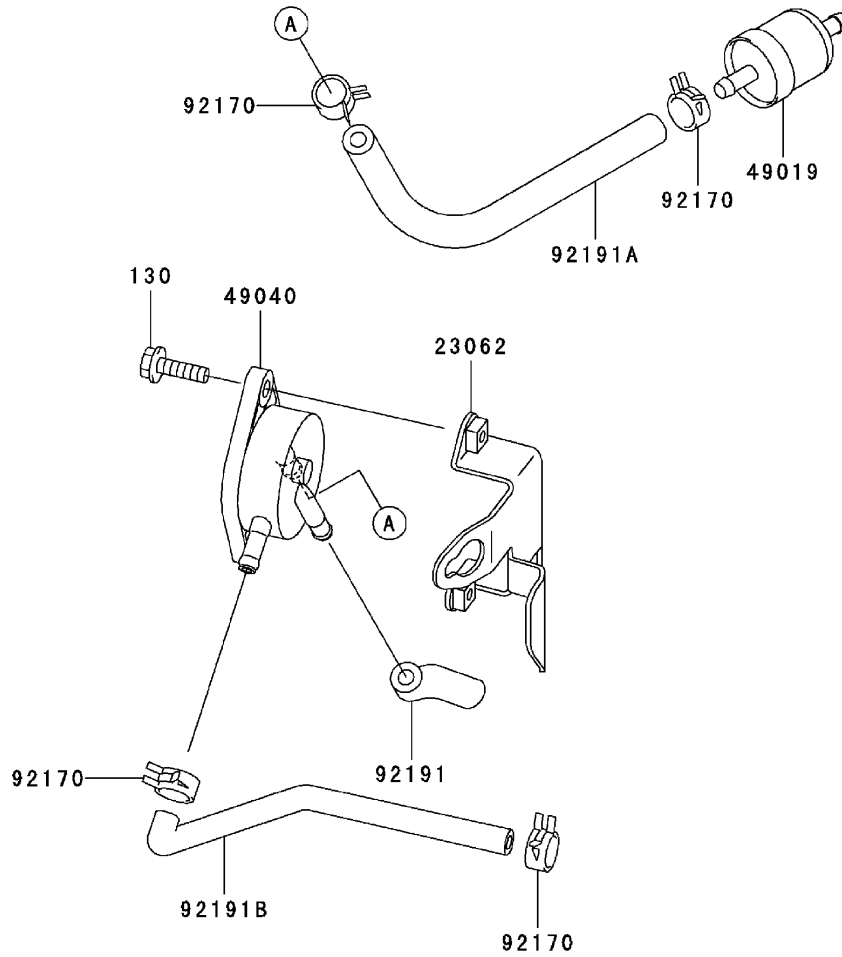
Ref	Part No.	Qty.	Description				
④11010	11010-7017	1	Air Filter ASM				
④11011	11011-7032	1	Case-Filter, Air				
④11013	11013-7029	1	Element-Filter, Air				
④11053	11053-7019	1	Bracket				
④11060	11060-7021	2	Gasket-Muffler				
④11065	11065-7008	1	Cap				
④11065A	11065-7011	1	Cap				
④16060	16060-7011	1	Pipe-Intake				
④23062	23062-7012	1	Bracket-Comp				
④92015	92015-1193	2	Nut				
④92066	92066-7018	1	Plug				
④92171	92171-7009	2	Clamp				
④92171A	92171-7010	3	Clamp				
④92192	92192-7013	1	Tube				
④92192A	92192-7014	1	Tube				
④92200	92200-1213	2	Washer (8.5x18x2.3)				
④130	130B0816	3	Bolt-Flanged				
④317	317R0800	6	Nut-Hex, Small				
④461	461F0800	6	Washer-Spring				

# Starter Assembly Kawasaki FH580V AS29



## Starter Assembly Kawasaki FH580V AS29

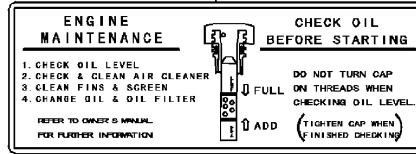
Ref	Part No.	Qty.	Description				
④13101	13101-7003	1	Gear ASM				
④21039	21039-7004	1	Brush				
④21080	21080-7001	1	Armature				
④21163	21163-7010	1	Starter-Electric				
④39184	39184-7004	1	Bracket ASM				
④92151	92151-7013	1	Bolt				
④130	130B0816	2	Bolt-Flanged				



## Fuel Tank/Fuel Valve Assembly Kawasaki FH580V AS29

Ref	Part No.	Qty.	Description				
④23062	23062-7004-9H	1	Bracket-Comp				
④49019	49019-7001	1	Filter-Fuel				
④49040	49040-7001	1	Pump-Fuel				
④92170	92170-2088	4	Clamp				
④92191	92191-7002	1	Tube				
④92191A	92191-7003	1	Tube (6.35x12.7x160)				
④92191B	92191-7004	1	Tube				
④130	130B0620	2	Bolt-Flanged				

56033



56070



56080



**Label Assembly  
Kawasaki FH580V AS29**

Ref	Part No.	Qty.	Description
④56033	56033-7002	1	Label-Manual
④56070	56070-7001	1	Label-Warning
④56080	56080-7022	1	Label-Brand

