



21in Heavy-Duty Recycler[®]/Rear Bagger Lawnmower

Model No. 22167 - 250000001 and up.

Parts Catalog

Ordering Replacement Parts

To order replacement parts, please supply the part number, the quantity, and the description of each part desired.

Understanding Reference Numbers

Each Identified part in an illustration has a reference number. The reference number for a part also appears in the parts list, along with other information about the part.

This catalog uses two special reference number formats, one to indicate parts in a service assembly and another to indicate the quantity of a given part in an illustration.

Service Assembly Reference Numbers

Parts in service assemblies have reference numbers in the form a:b. The a represents the reference number of the entire service assembly and the b represents a sequential number unique to each part within the service assembly.

For example, a wheel assembly might be identified by reference number 6, the tire by 6:1, the valve by 6:2, and the wheel by 6:3. When you order the assembly identified by reference number 6, you receive all parts identified by reference numbers 6:1, 6:2, and 6:3. However, you may also order any part individually. Reference numbers of this type appear in illustrations and in part lists.

Reference Numbers Indicating Quantity

In an illustration, if a reference number indicates more than one part, the reference number has the form nX y. The n represents the quantity of the part, the X is the multiplication symbol, and the y represents the reference number.

For example, in an illustration, the reference number 2X 37 means that two of the parts identified by reference number 37 are indicated.

Contents

Description	Page	Description	Page
Housing Assembly 3	Cylinder Barrel Assembly Honda GXV160K1-A1T 13
Housing Assembly No. 98-7139 4	Crankshaft and Piston Assembly Honda GXV160K1-A1T 14
Wheel and Tire Assembly No. 53-7720 5	Camshaft Assembly Honda GXV160K1-A1T 15
Gear Case Assembly No. 74-1861 6	Recoil Starter Assembly Honda GXV160K1-A1T 16
Engine and Blade Assembly 7	Fan Cover Assembly Honda GXV160K1-A1T 17
Handle and Control Assembly 8	Carburetor Assembly Honda GXV160K1-A1T 18
Rear Axle Assembly 9	Air Cleaner Assembly Honda GXV160K1-A1T 19
Rear Wheel Assembly No. 74-1720 10	Muffler Assembly Honda GXV160K1-A1T 20
Grass Bag Assembly No. 106-0975 11	Flywheel Assembly Honda GXV160K1-A1T 21
Cylinder Head Assembly Honda GXV160K1-A1T 12	Control Assembly Honda GXV160K1-A1T 22
		Label Assembly Honda GXV160K1-A1T 23

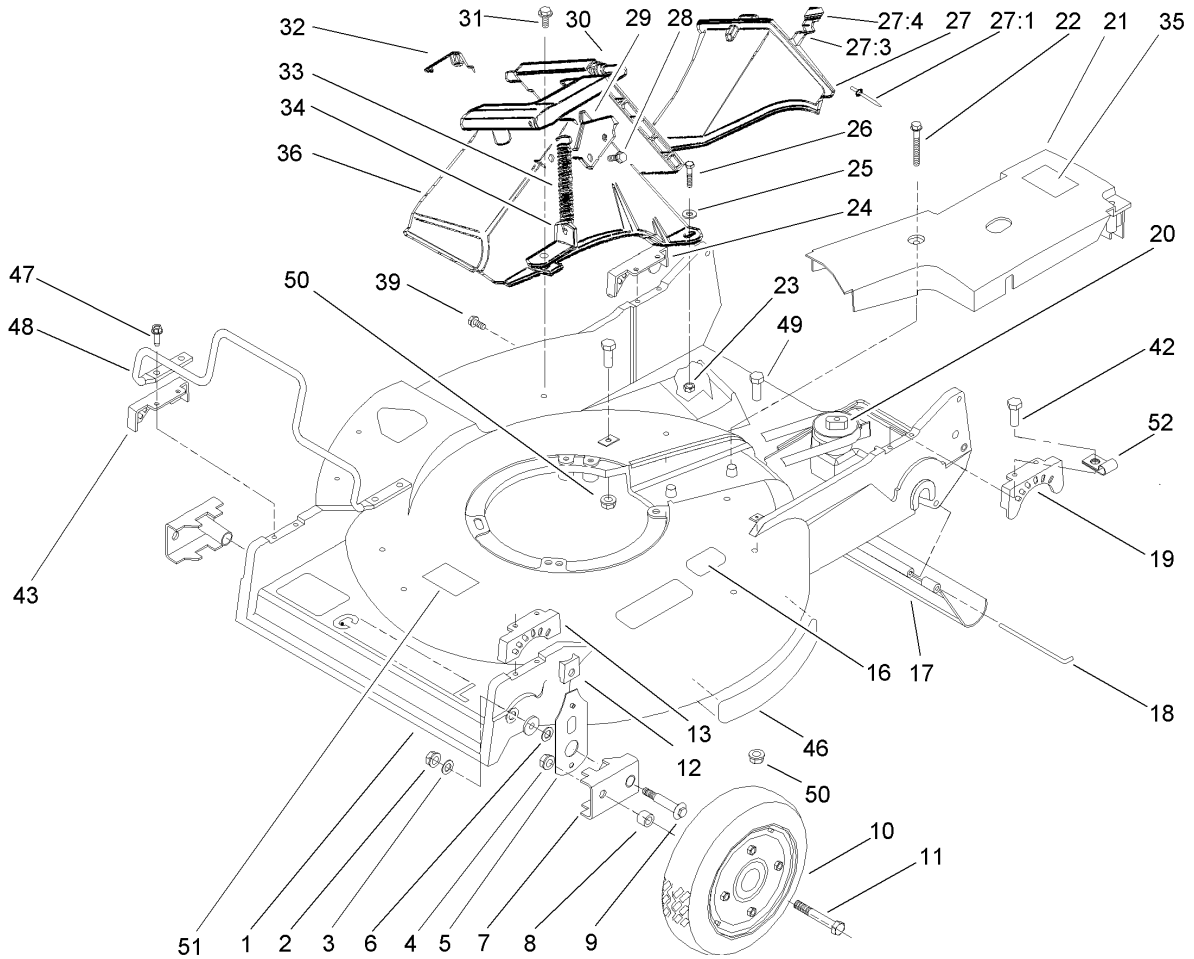
Part Description Abbreviations

Part descriptions in this catalog may include the following abbreviations.

AR. as required	INC. incorporated
ASM. assembly	LH. left hand
CARR. carriage	NI. nylon insert
DEG. degrees	NPTF. national pipe thread fine
FH. flat head	PPH. phillips pan head
GA. gauge	PRH. phillips round head
HF. hex flange	PTH. phillips truss head
HH. hex head	PTO. power take off
HHF. hex head flange	RH. right hand
HHFTF. hex head flange thread forming	ROPS. roll over protection system
HJ. hex jam	SFH. slotted fillister head
HLH. hex lag head	SHH. slotted hex head
HOC. height-of-cut	SHWH. slotted hex washer head
HS. hex	SPH. slotted pan head
HSBH. hex socket button head	SQH. square head
HSFH. hex socket flat head	SRH. slotted round head
HSH. hex socket head	STD. standard
HWH. hex washer head	TAP. self tapping
HWHTF. hex washer head thread forming	TTH. torx truss head
HYD. hydraulic	WH. wing head

Footnotes

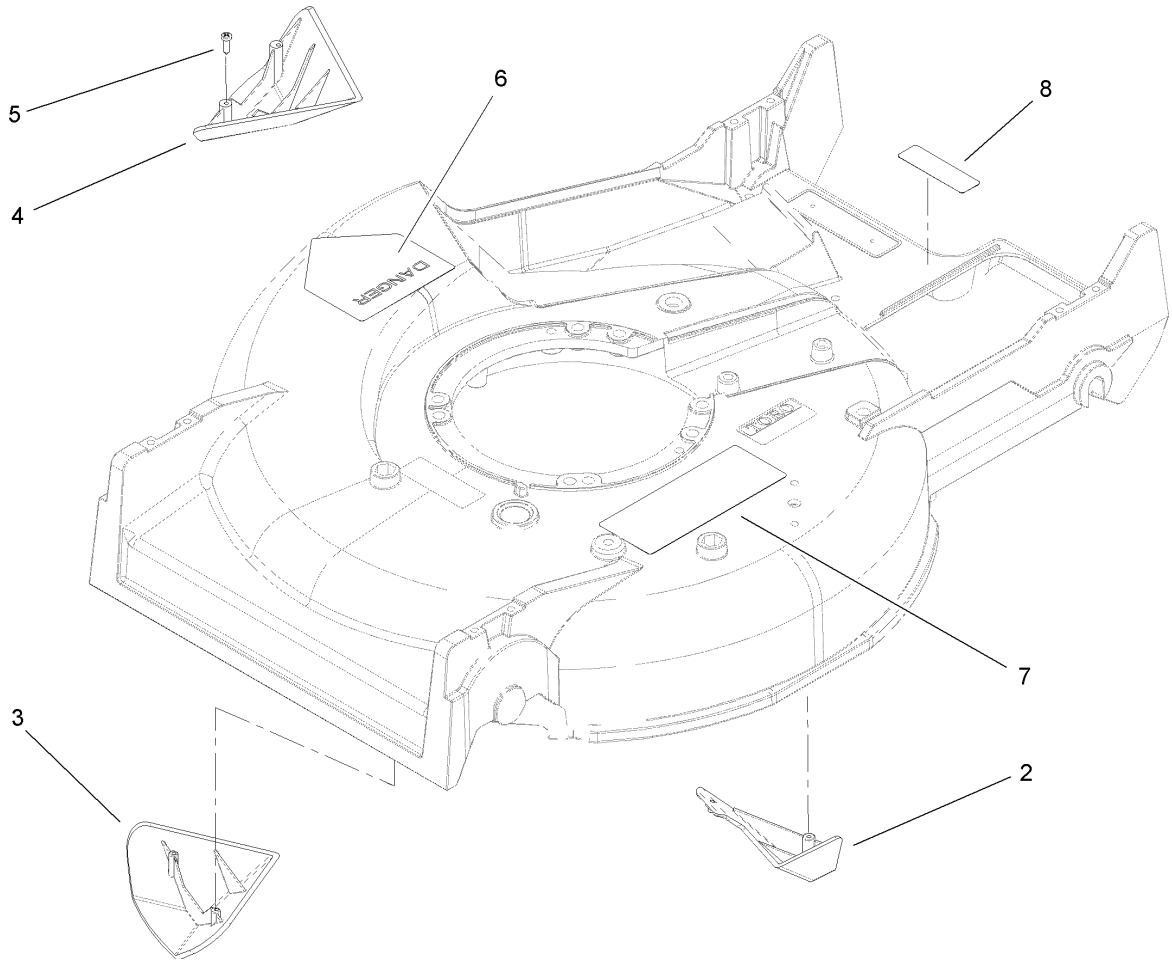
- ❶ Not illustrated
- ❷ Not serviced separately
- ❸ Obtain parts from your local Honda dealer



Housing Assembly

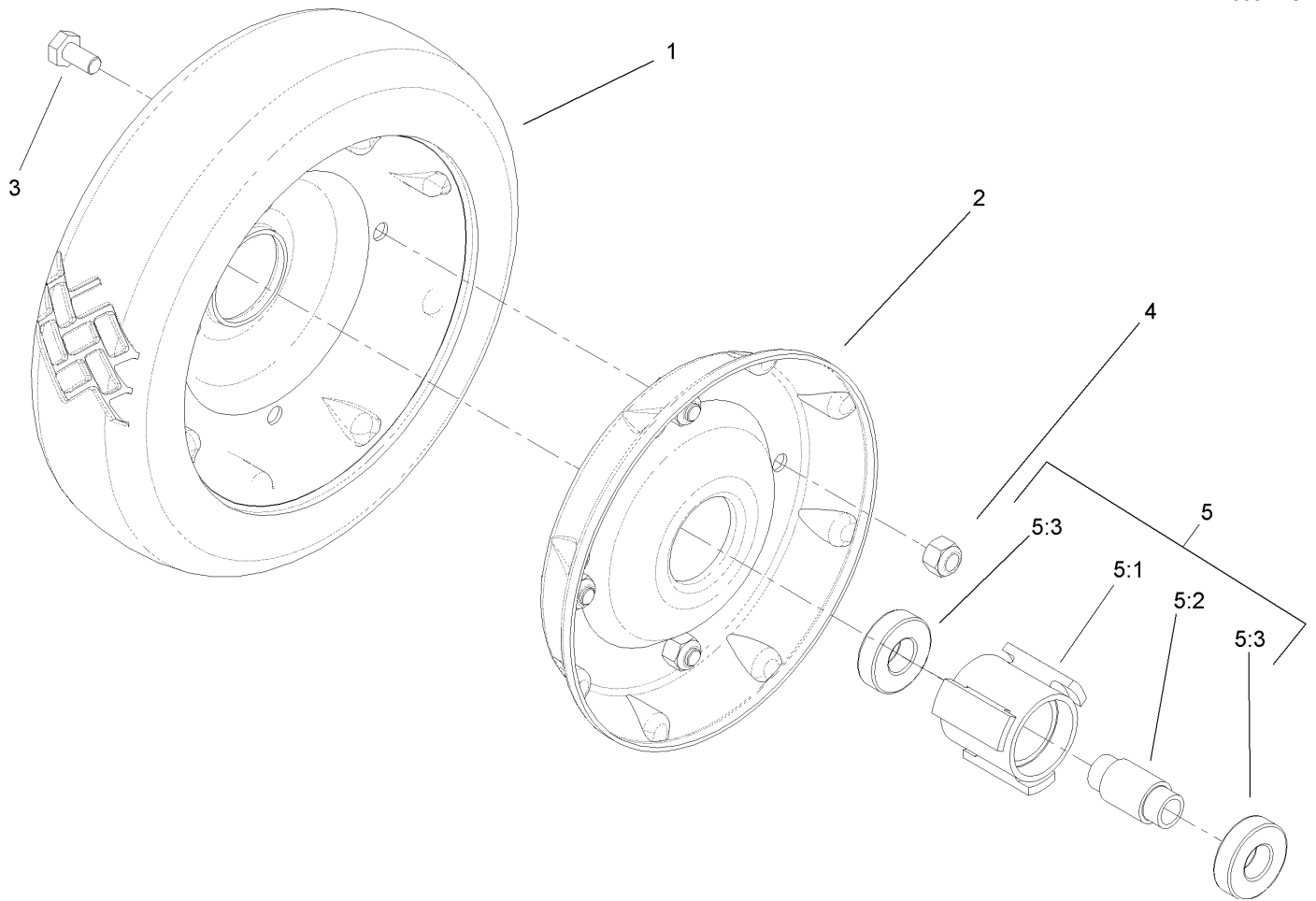
Ref	Part No.	Qty.	Description
1	98-7139	1	Housing
2	3296-6	2	Nut-Lock
3	40-1940	4	Washer
4	32152-2	2	Nut-Lock, Cone
5	66-7560	2	Front Spring Arm ASM
6	257-3	2	Washer-Thrust
7	61-8300	2	Arm-Pivot, Front
8	52-2480	2	Spacer-Wheel
9	27-6232	2	Bolt-Wheel
10	100-2870	2	Wheel And Tire ASM
11	323-12	2	Screw-HH
12	25-7740	2	Knob-Arm
13	49-8760	1	Quadrant-Front, LH
16	105-2625	1	Decal-Std, Safety
17	44-0580	1	Shield-Trailing
18	33-3208	1	Rod-Shield
19	49-8740	1	Quadrant-Rear, LH
20	74-1861	1	Gear Case ASM
21	74-1770	1	Cover-Belt
22	37-7260	2	Screw-HH
23	3296-42	2	Nut-Lock, NI
24	49-8750	1	Quadrant-Rear, RH
25	3256-22	2	Washer-Flat
26	321-7	2	Screw-HH

Ref	Part No.	Qty.	Description
27	77-0500	1	Discharge Plug ASM
27:1	3295-35	1	Rivet-Head, Flat
27:3	76-4640	1	Latch-Plug, Discharge
27:4	76-4650	1	Grip-Latch
28	46-8090	2	Screw-Plastite
29	93-3154	1	Latch-Plate
30	93-7351	1	Discharge Door ASM
31	46-6811	1	Screw-HWH
32	80-3770	1	Retainer-Door
33	76-4660	1	Spring-Door
34	71-9350	1	Bracket-Spring
35	52-2620	1	Label-Grease
36	82-9152	1	Tunnel-Discharge
39	46-6810	1	Screw And Washer ASM
42	49-2040	4	Screw-Tapping
43	49-8770	1	Quadrant-Front, RH
46	106-0689	1	Decal
47	32144-86	4	Screw-Hwh, Thread Forming
48	99-6722	1	Guard-Engine
49	323-6	2	Screw-HH
50	3296-39	2	Nut-Lock, NI
51	68-7410	1	Decal-Blade
52	2412-72	1	Clip-Closed, Insulated



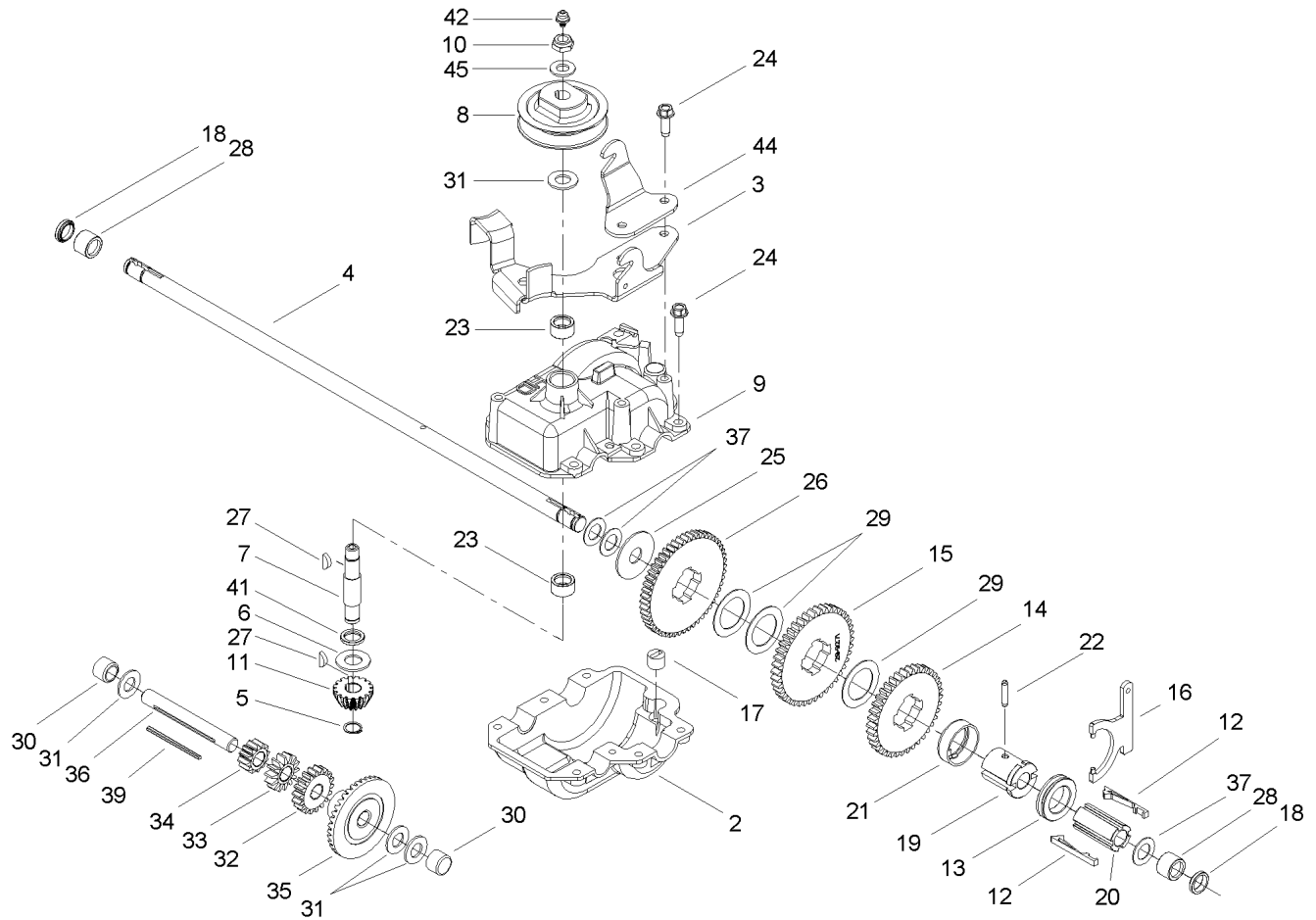
Housing Assembly No. 98-7139

Ref	Part No.	Qty.	Description				
2	92-1750	1	Kicker-Rear				
3	92-1720	1	Kicker-Front				
4	92-1730	1	Kicker-RH				
5	32144-111	6	Screw-PPH				
6	39-5770	1	Decal-Danger				
7	93-0248	1	Decal-Warning				
8	92-1779	1	Decal-Warning				



Wheel and Tire Assembly No. 53-7720

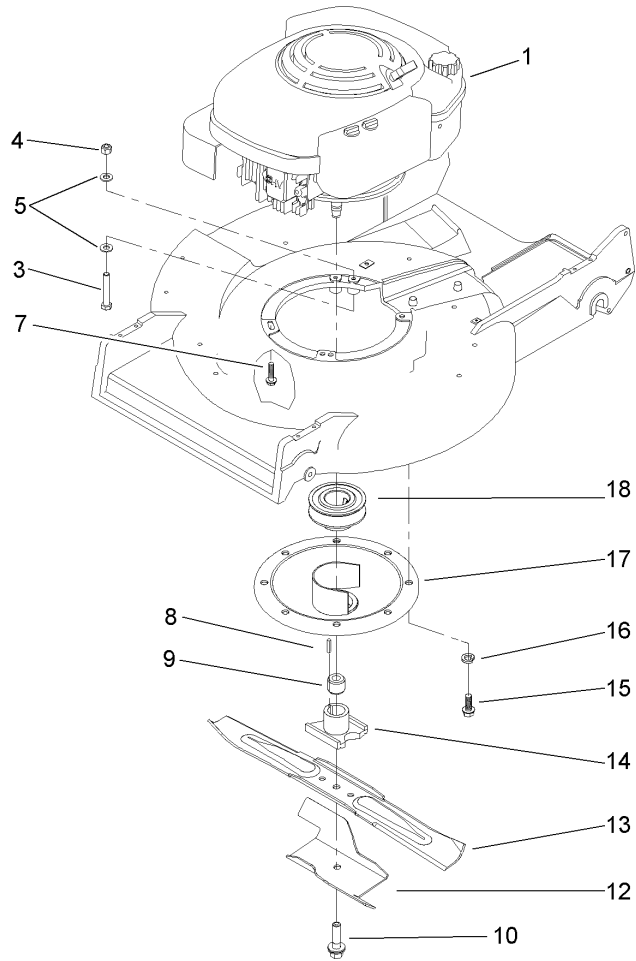
Ref	Part No.	Qty.	Description
1	53-7740	1	Tire
2	53-7780-06	2	Plate-Wheel, Half
3	321-2	4	Screw-HH
4	3296-42	4	Nut-Lock, NI
5		1	Hub And Bearing ASM
5:1	52-2410	1	Hub-Bearing
5:2	52-2440	1	Spacer-Bearing
5:3	52-2450	2	Bearing-Wheel



Gear Case Assembly No. 74-1861

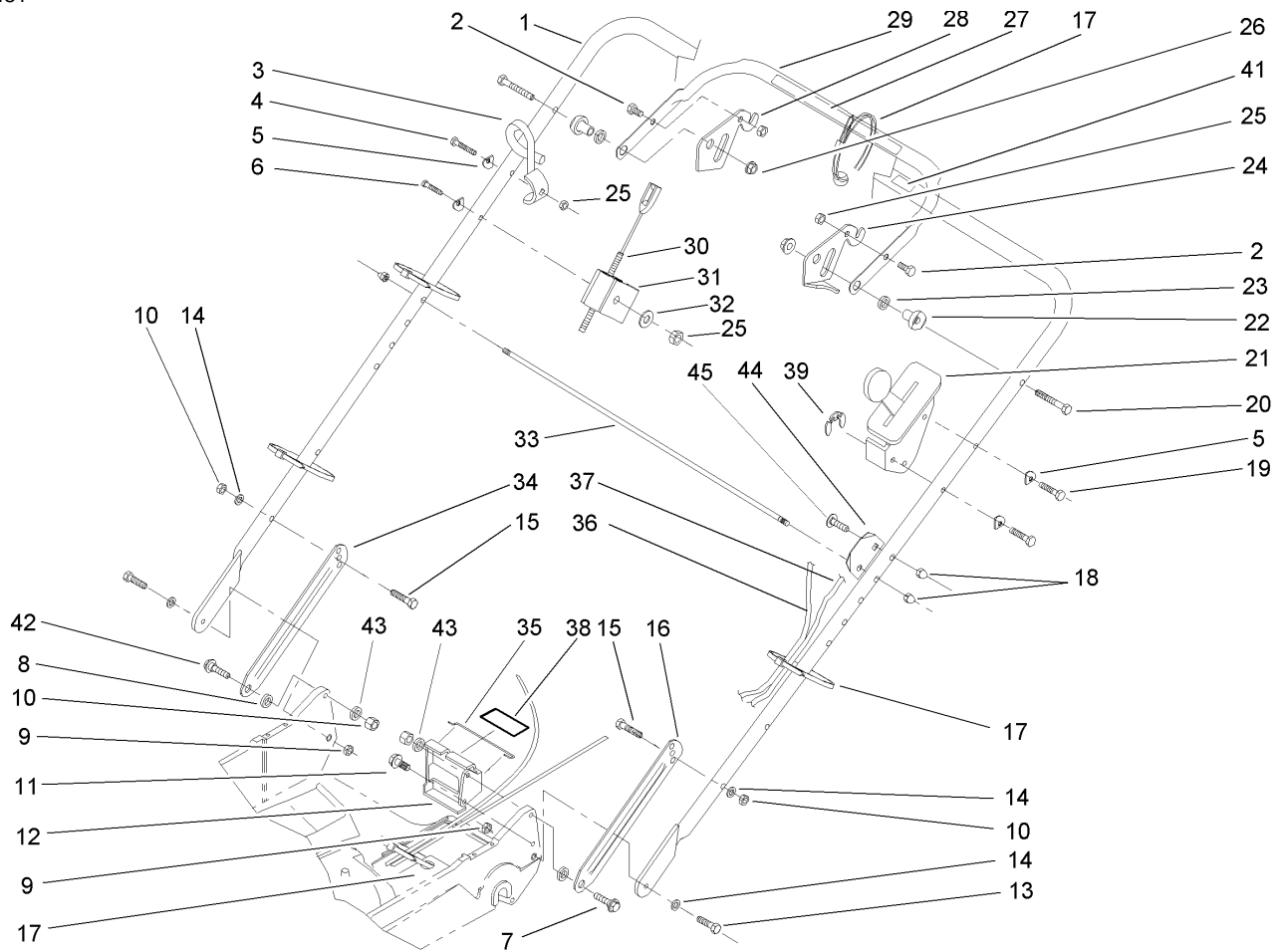
Ref	Part No.	Qty.	Description
2	74-1920	1	Case-Gear, Lower
3	49-8461-03	1	Bracket-Guide, Belt
4	74-1890	1	Shaft-Output
5	32151-57	1	Ring-Retaining
6	47-2910	1	Washer-Thrust
7	68-8190	1	Shaft-Input
8	39-6740	1	Pulley
9	74-1880	1	Case-Gear, Upper
10	3296-5	1	Nut-Lock
11	39-6660	1	Pinion-Bevel
12	29-9330	2	Key-Shift
13	29-9340	1	Collar-Shift
14	42-4740	1	Gear-38 Tooth
15	29-9271	1	Gear-42 Tooth
16	60-8870	1	Yoke-Shift
17	29-9570	1	Bushing-Yoke
18	47-6730	2	Seal-Oil
19	55-8010	1	Sleeve-Gear
20	39-6720	1	Sleeve
21	55-8020	1	Retainer-Key
22	3285-19	1	Pin-Groove
23	47-7270	2	Bearing
24	49-2040	6	Screw-Tapping
25	29-9690	1	Washer

Ref	Part No.	Qty.	Description
26	46-3560	1	Gear
27	3257-1	2	Key-Woodruff
28	48-2060	2	Bearing-Roller
29	36-4770	3	Washer
30	252-103	2	Bearing-Closed
31	36-4792	4	Washer-Thrust
32	39-6650	1	Gear-18t
33	46-3550	1	Gear-14t
34	46-3540	1	Gear-12t
35	74-1760	1	Gear-Bevel
36	53-7950	1	Shaft-Intermediate
37	36-4780	3	Washer
39	39-7842	1	Key
41	47-7260	1	Seal
42	302-63	1	Zerk
44	74-1750-03	1	Braket-Engage, Traction
45	3256-45	1	Washer-Flat



Engine and Blade Assembly

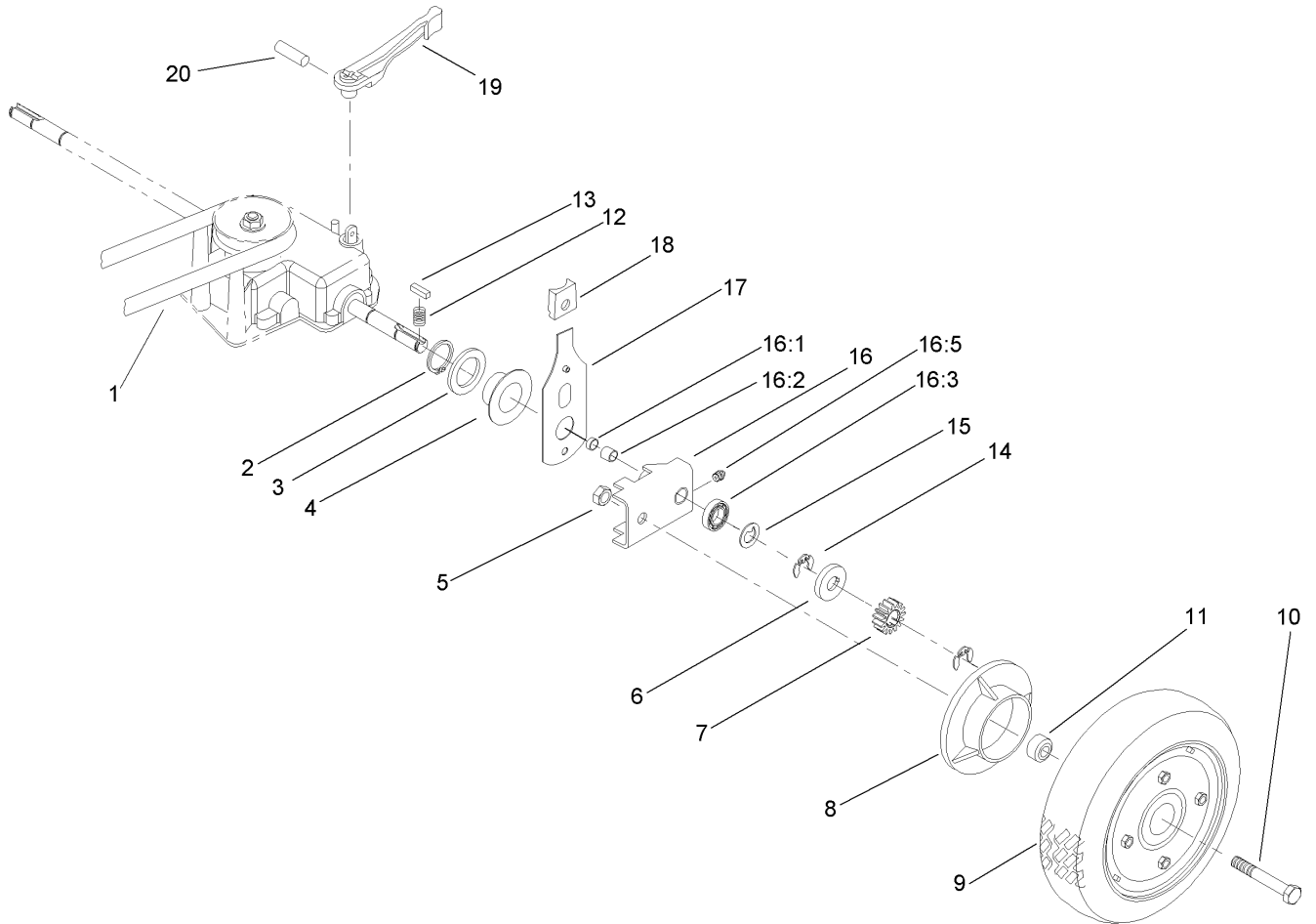
Ref	Part No.	Qty.	Description				
1		1	Engine-Honda, Gxv160k1-A1t				
3	322-10	1	Screw-HH				
4	3296-29	1	Nut-Lock, NI				
5	3256-23	2	Washer-Flat				
7	103-2678	3	Screw-Shoulder				
8	5-1077	1	Key-Square				
9	103-3795	1	Spacer-Retainer, Blade				
10	105-8579	1	Bolt-Blade				
12	92-1599-03	1	Stiffener-Blade				
13	14-9419	1	Blade				
14	52-2170	1	Retainer-Blade				
15	32144-70	3	Screw-HH				
16	3254-6	3	Washer-Lock, Internal				
17	65-5860	1	Protector-Crankshaft				
18	46-7910	1	Pulley-Driver				



Handle and Control Assembly

Ref	Part No.	Qty.	Description
1	98-2000-03	1	Handle
2	321-4	2	Screw-HH
3	46-8081	1	Guide-Rope
4	321-9	1	Screw-HH
5	3-7501	4	Washer
6	321-15	1	Screw-HH
7	27-7210	1	Screw-Shoulder
8	3-3287	2	Spacer-Latch, Handle
9	3296-47	2	Nut-Lock, NI
10	3296-29	4	Nut-Lock, NI
11	32144-70	1	Screw-HH
12	74-1741	1	Bracket-Adjustment, Traction
13	322-6	2	Screw-HH
14	3290-456	4	Washer-Belleville
15	322-7	2	Screw-HH
16	100-3298-03	1	Latch-Handle, LH
17	3290-378	5	Tie-Cable
18	32111-7	3	Nut-Cap
19	321-13	2	Screw-HH
20	322-11	2	Screw-HH
21	103-5296	1	Control-Throttle
22	49-1630	2	Spacer-Support
23	256-276	2	Spacer-Nylon
24	66-5350	1	Lever-Control

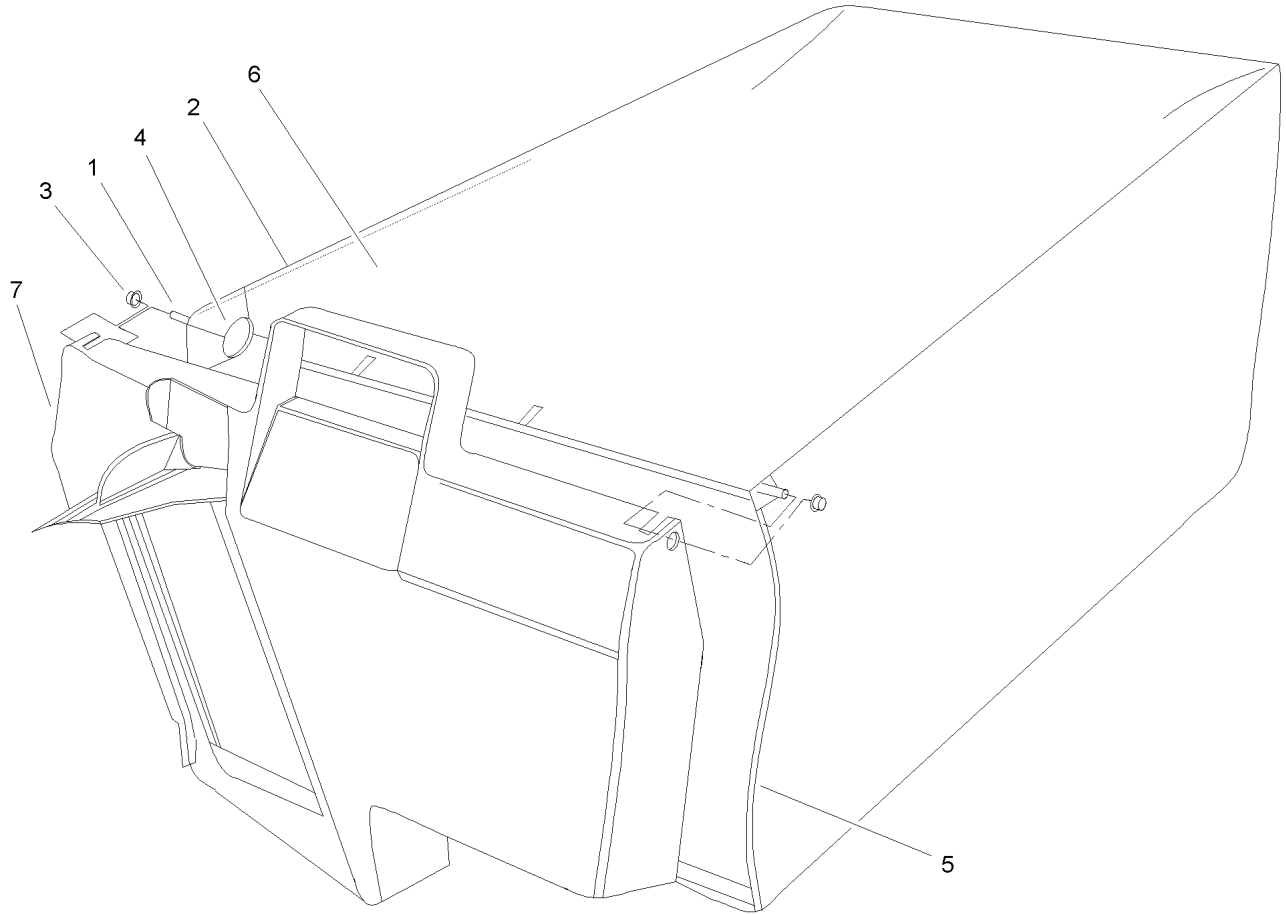
Ref	Part No.	Qty.	Description
25	3296-42	4	Nut-Lock, NI
26	3296-58	2	Nut-Lock NI
27	106-0690	1	Decal-Traction
28	77-5270	1	Lever-Control
29	61-8270-03	1	Bar-Control
30	103-2683	1	Cable-Brake
31	46-6980	1	Support-Cable
32	3256-22	1	Washer-Flat
33	48-2810	1	Rod-Support, Bag
34	100-3297-03	1	Latch-Handle, RH
35	46-7030	1	Retainer-Cable
36	74-1791	1	Cable-Traction
37	106-0888	1	Throttle Cable ASM
38	74-1970	1	Decal-Position, Gear
39	32151-86	2	E-Ring
41	98-4387	1	Decal-Protection, Ear
42	27-7211	1	Screw-Shoulder
43	3256-23	2	Washer-Flat
44	104-1326	1	Plate-Aligning, Bag
45	3229-3	1	Screw-CARR



Rear Axle Assembly

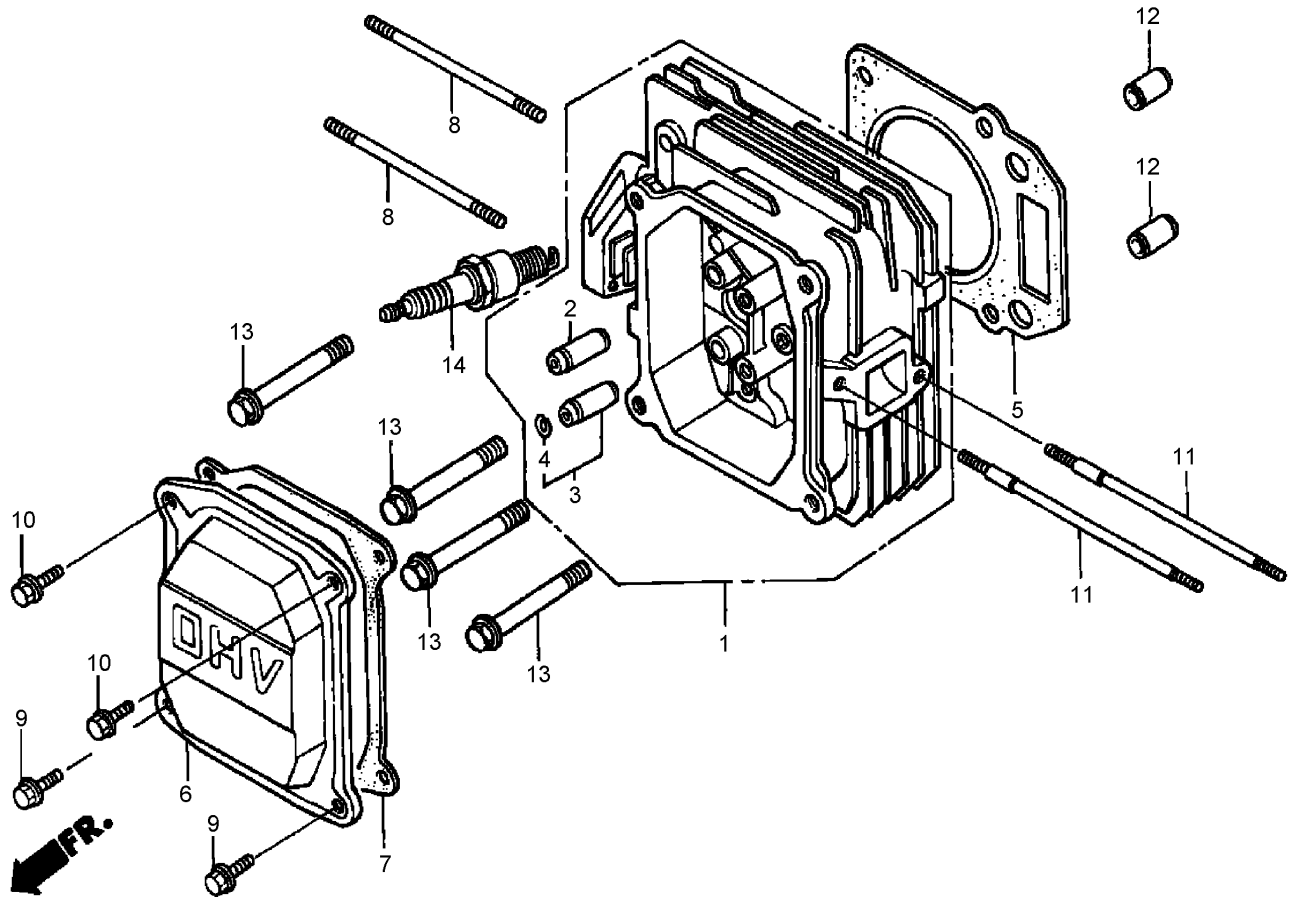
Ref	Part No.	Qty.	Description
1	36-8070	1	V-Belt
2	32151-36	2	Ring-Retaining
3	74-1810	2	Washer
4	48-2170	2	Cap-End
5	32152-2	2	Nut-Lock, Cone
6	62-3830	2	Washer-Thrust, Outer
7	39-9160	2	Gear-Pinion
8	74-1640	2	Cover-Wheel
9	100-2860	2	Wheel And Tire ASM
10	323-13	2	Screw-HH
11	74-1650	2	Spacer-Cover, Wheel
12	39-9650	2	Spring-Compression
13	612066	2	Key
14	32151-68	4	Ring-Retaining
15	49-7700	2	Washer-Thrust, Outer
16	74-1851	2	Pivot Arm ASM
16:1	47-6730	1	Seal-Oil
16:2	48-2060	1	Bearing-Roller
16:3	52-2450	1	Bearing-Wheel
16:5	92-6316	1	Zerk
17	66-7561	2	Rear Spring Arm ASM
18	25-7740	2	Knob-Arm
19	74-1960	1	Lever-Shift
20	32121-99	1	Pin-Coil

Ref	Part No.	Qty.	Description
●99	106-0975	1	Grass Bag ASM



Grass Bag Assembly No. 106-0975

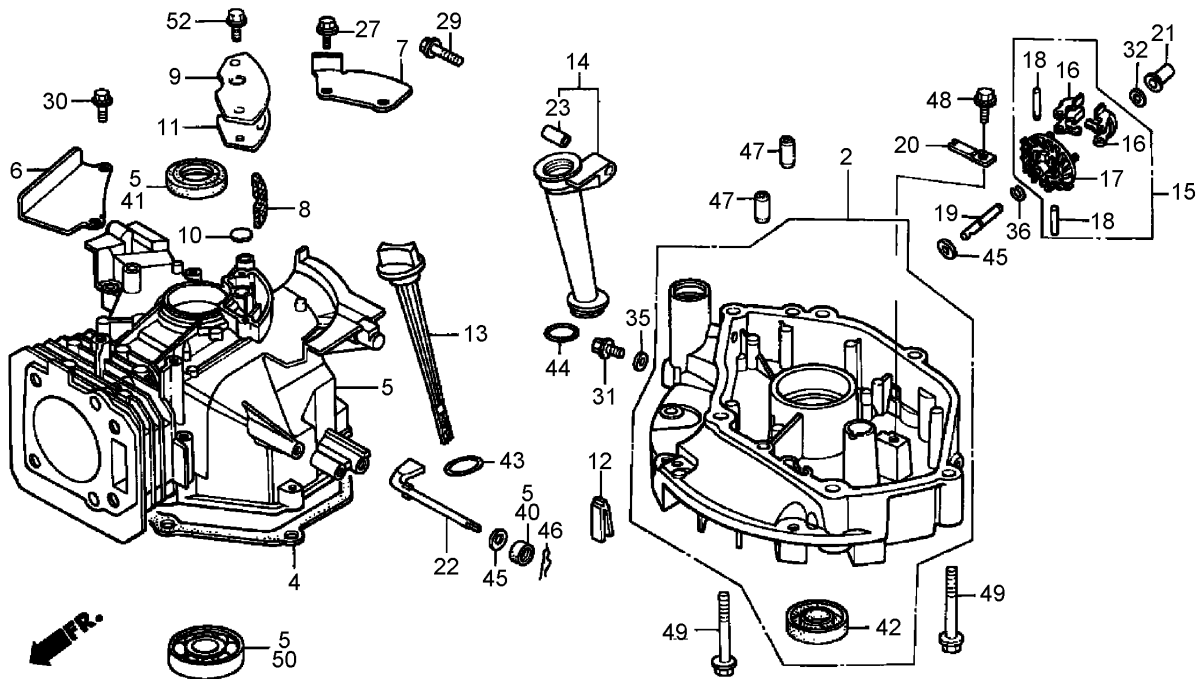
Ref	Part No.	Qty.	Description
1	33-4820	1	Hinge-Door, Bag
2	42-4030	1	Frame-Bag, Upper
3	3290-422	2	Nut-Push
4	36-6910	2	Spring
5	42-4020	1	Frame-Bag
6	106-0926	1	Bag-Grass
7	48-2840	1	Door-Bag, Grass



Cylinder Head Assembly Honda GXV160K1-A1T

Ref	Part No.	Qty.	Description
1	12200-ZE7-405	1	Head-Cylinder
2	12204-ZE1-306	1	Guide-Valve (Os)
3	12205-ZE1-315	1	Guide-Valve, Ex. (Os)
4	12216-ZE5-300	1	Clip-Guide, Valve
5	12251-ZE7-000	1	Gasket-Head, Cylinder
6	12311-ZG9-800	1	Cover-Head
7	12391-ZE7-T00	1	Gasket-Cover, Cylinder Head
8	90048-ZC3-000	2	Bolt-Stud (6x85)
9	90013-883-000	2	Bolt-Flange (6x12)
10	90013-883-000	2	Bolt-Flange (6x12)
11	90043-ZE6-000	2	Bolt-Stud (6x109)
12	94301-10160	2	Pin-Dowel (10x16)
13	95701-08050-00	4	Bolt-Flange (8x50)
14	98079-54846	1	Spark Plug (Bpr4es)
14	98079-54855	1	Spark Plug (W14epr-u)

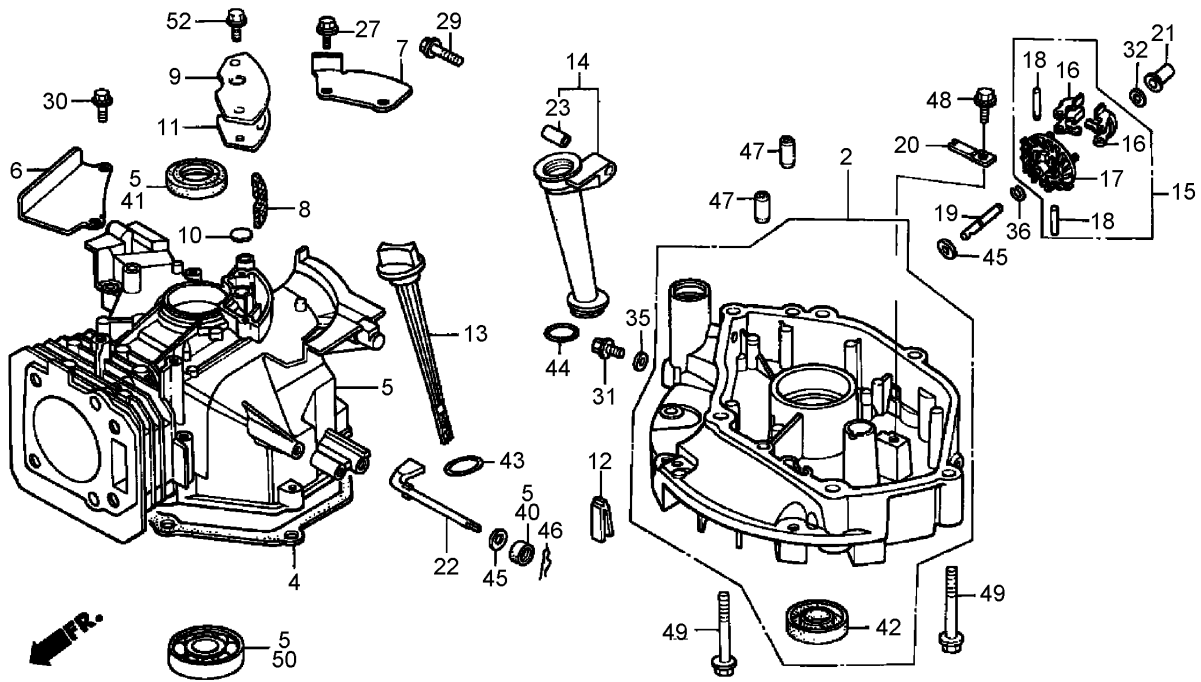
Ref	Part No.	Qty.	Description
14	98079-55846	1	Spark Plug (Bpr5es)
14	98079-55855	1	Spark Plug (W16epr-u)
14	98079-56846	1	Spark Plug (Bpr6es)
14	98079-56855	1	Spark Plug (W20epr-u)



Cylinder Barrel Assembly Honda GXV160K1-A1T

Ref	Part No.	Qty.	Description
②	11300-ZE7-408	1	Oil Pan ASM
④	11381-ZE7-M10	1	Gasket-Pan, Oil
⑤	12000-ZE7-405	1	Cylinder ASM
⑥	12125-ZE7-000	1	Plate-Guide
⑦	12126-ZE7-W00	1	Plate A-Guide
⑧	12367-883-003	1	Filter-Breather
⑨	12370-ZE7-000	1	Cover-Breather
⑩	12372-ZE7-000	1	Valve-Breather
⑪	12373-ZE7-000	1	Gasket-Cover, Breather
⑫	15335-ZE7-000	1	Rubber-Return, Oil
⑬	15620-ZE6-810	1	Dipstick-Oil
⑭	15630-ZE6-810	1	Extension-Filler, Oil (106mm)
⑮	16510-ZE6-000	1	Governor ASM

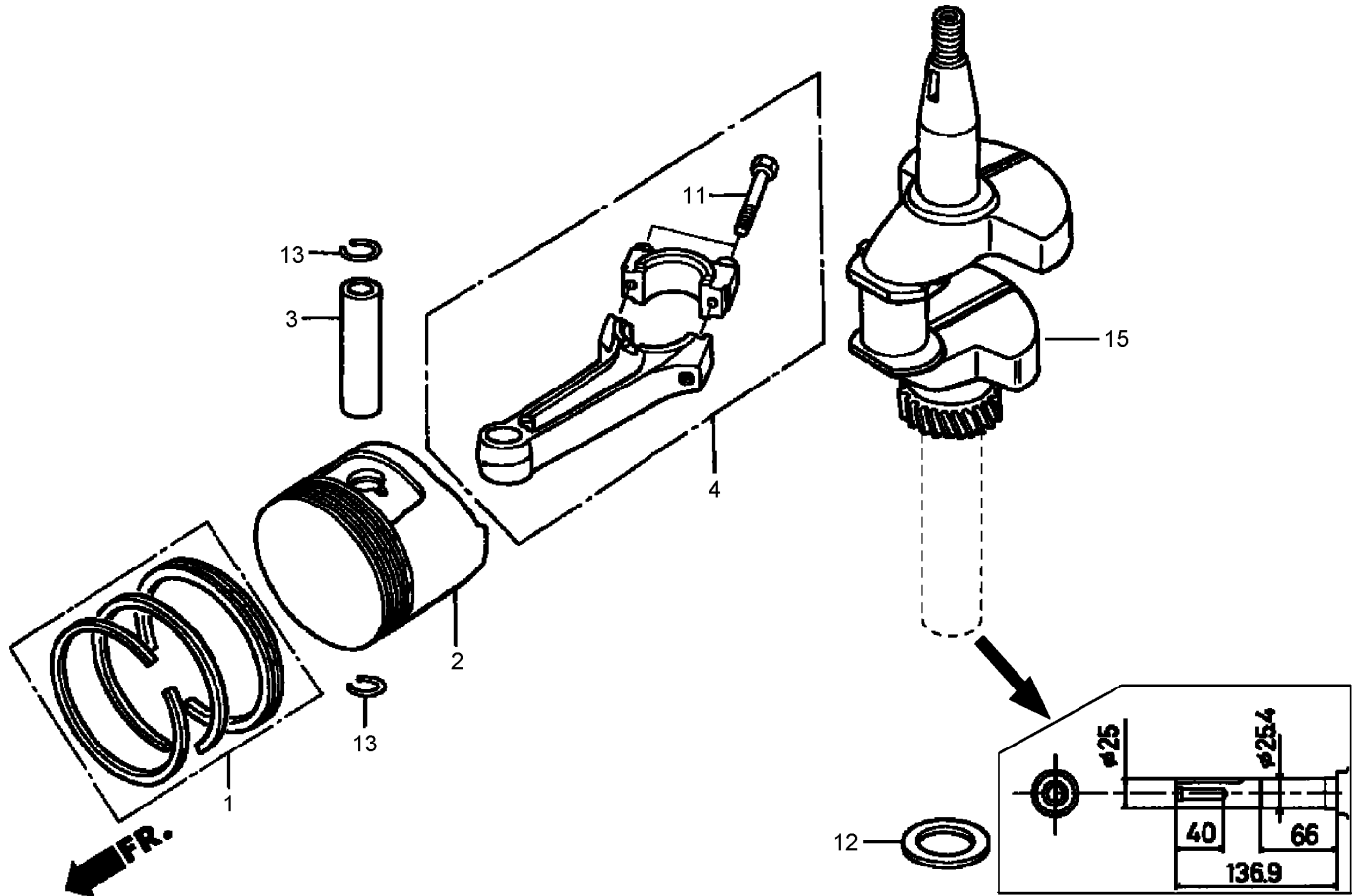
Ref	Part No.	Qty.	Description
⑯	16511-ZE1-000	2	Weight-Governor
⑰	16512-ZE6-000	1	Holder-Weight, Governor
⑱	16513-ZE1-000	2	Pin-Weight, Governor
⑲	16515-ZE6-010	1	Shaft-Holder, Governor
⑳	16525-ZE6-010	1	Plate-Holder, Governor Shaft
㉑	16531-ZE1-000	1	Slider-Governor
㉒	16541-ZE7-000	1	Shaft-Arm, Governor
㉓	17240-ZE6-000	1	Collar-Extension
㉔	90013-883-000	2	Bolt-Flange (6x12)
㉕	90017-883-000	1	Bolt-Flange (6x32)
㉖	90022-888-010	2	Bolt-Flange (6x20)
㉗	90131-ZE1-000	1	Bolt-Plug, Drain
㉘	90451-ZE1-000	1	Washer-Thrust (6mm)



Cylinder Barrel Assembly Honda GXV160K1-A1T (continued)

Ref	Part No.	Qty.	Description
35	90601-ZE1-000	1	Washer-Plug, Drain (10.2mm)
36	90602-ZE1-000	1	Clip-Holder, Governor
40	91231-891-003	1	Seal-Oil (6x11x4)
41	91201-ZG9-U71	1	Seal-Oil (25x38x7)
41	91252-888-003	1	Seal-Oil (25x38x7) (Arai)
42	91252-894-004	1	Seal-Oil (25.4x40x7)
43	91301-ZE9-003	1	O-Ring (22.5x2.2)
44	91301-805-000	1	O-Ring (26x2.7)
45	94101-06800	2	Washer-Plain (6mm)
46	94251-08000	1	Pin-Lock (8mm)
47	94301-08140	2	Pin-Dowel (8x14)
48	95701-06012-08	1	Bolt-Flange (6x12)
49	95701-08050-00	6	Bolt-Flange (8x50)
50	96100-62050-00	1	Bearing-Ball, Radial
52	90014-952-000	2	Bolt-Flange (6x14)

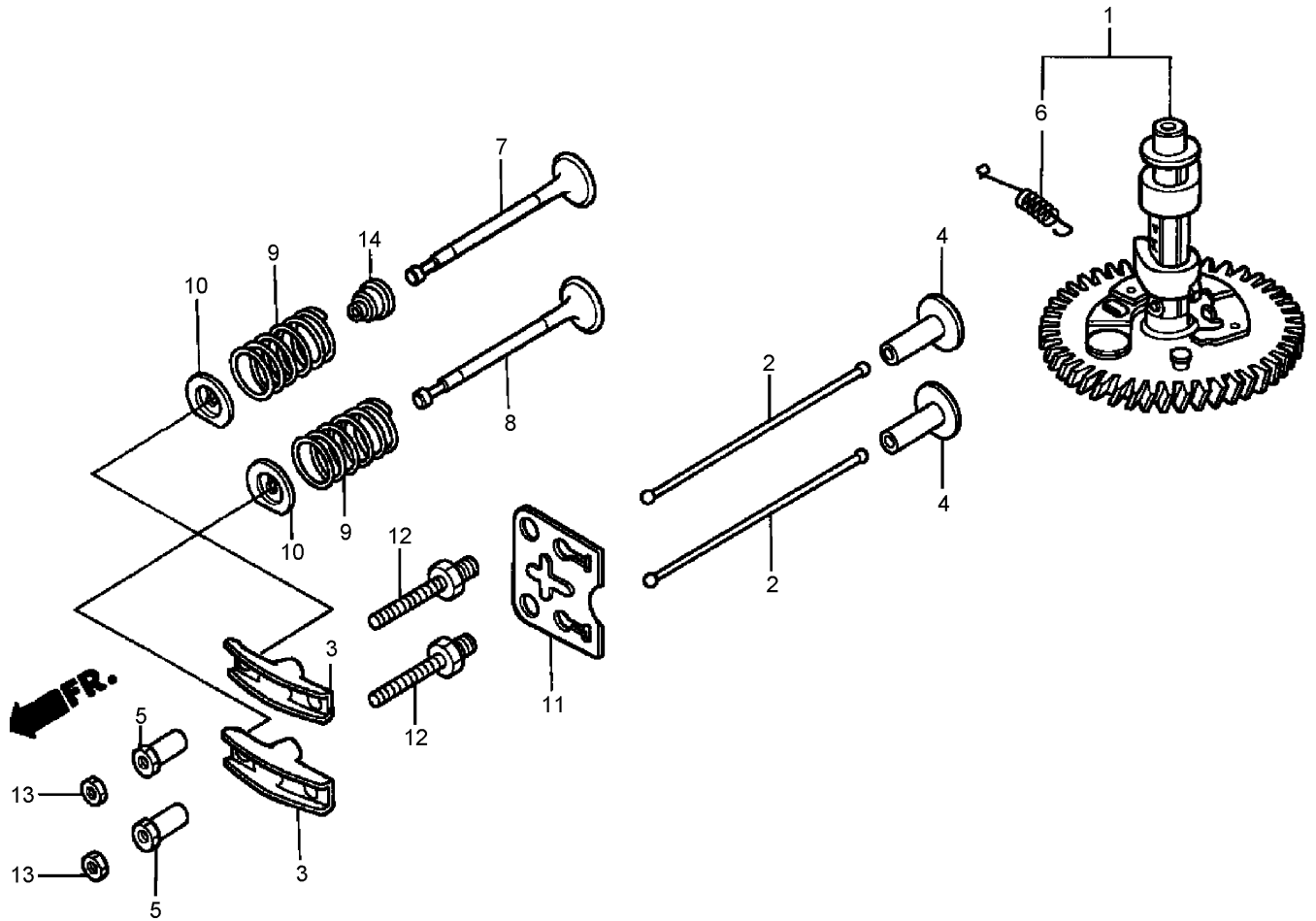
--	--	--	--



Crankshaft and Piston Assembly Honda GXV160K1-A1T

Ref	Part No.	Qty.	Description
Ⓐ1	13010-ZL0-003	1	Ring Set-Piston (Std)
Ⓐ1	13010-ZL0-004	1	Ring Set-Piston (Std) (Nippon)
Ⓐ1	13011-ZL0-003	1	Ring Set-Piston (Os0.25)
Ⓐ1	13011-ZL0-004	1	Ring Set-Piston (Os0.25)(Nippon)
Ⓐ1	13012-ZL0-003	1	Ring Set-Piston (Os0.50)
Ⓐ1	13012-ZL0-004	1	Ring Set-Piston (Os0.50) (Nippon)
Ⓐ1	13013-ZL0-003	1	Ring Set-Piston (0.75)
Ⓐ1	13013-ZL0-004	1	Ring Set-Piston (0.75)(Nippon)
Ⓐ2	13101-ZE7-020	1	Piston (Std)
Ⓐ2	13102-ZE7-020	1	Piston (Os 0.25)
Ⓐ2	13103-ZE7-020	1	Piston (Os 0.50)
Ⓐ2	13104-ZE7-020	1	Piston (0.75)
Ⓐ3	13111-ZE1-000	1	Pin-Piston

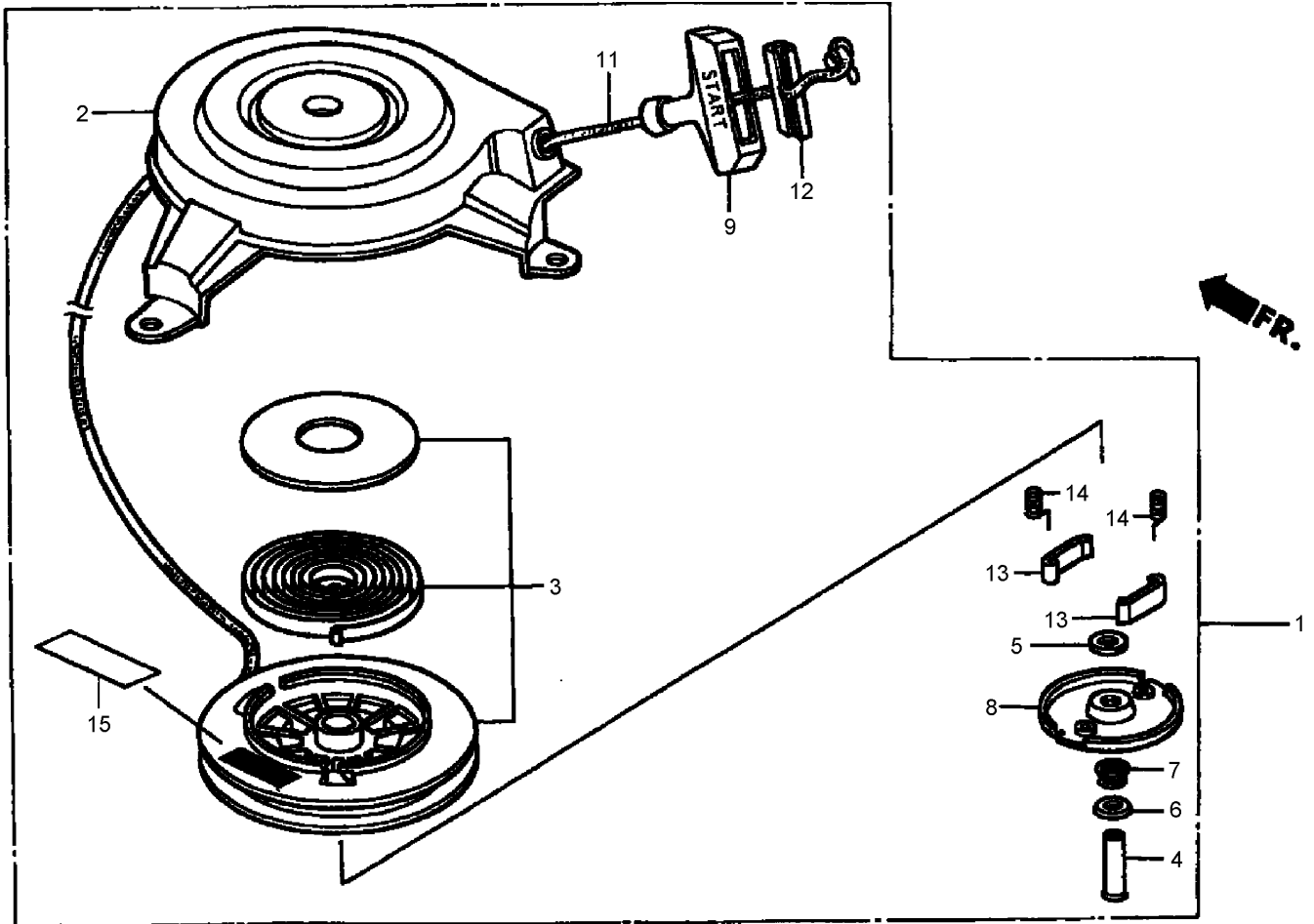
Ref	Part No.	Qty.	Description
Ⓐ4	13200-ZE7-000	1	Connecting Rod ASM
Ⓐ4	13200-ZE7-305	1	Connecting Rod ASM (Us 0.25)
Ⓐ11	90001-ZE1-000	2	Bolt-Rod, Connecting
Ⓐ12	90401-ZE7-W00	1	Washer-Thrust (25.6mm)
Ⓐ13	90551-ZE1-000	2	Clip-Pin, Piston (18mm)
Ⓐ15	13310-ZE7-V10	1	Crankshaft



Camshaft Assembly Honda GXV160K1-A1T

Ref	Part No.	Qty.	Description
1	14100-ZE7-000	1	Camshaft ASM
2	14410-ZE1-010	2	Rod-Push
3	14431-ZE1-000	2	Arm-Rocker, Valve
4	14441-ZE1-010	2	Lifter-Valve
5	14451-ZE1-013	2	Pivot-Arm, Rocker
6	14568-ZE1-000	1	Spring-Return, Weight
7	14711-ZF1-000	1	Valve-In.
8	14721-ZE7-000	1	Valve-Ex.
9	14751-ZE1-000	2	Spring-Valve
10	14771-ZE1-000	2	Retainer-Valve Spring, In.
11	14791-ZE1-010	1	Plate-Guide, Push Rod
12	90012-ZE0-010	2	Bolt-Pivot (8mm)
13	90206-ZE1-000	2	Nut-Pivot Adj.

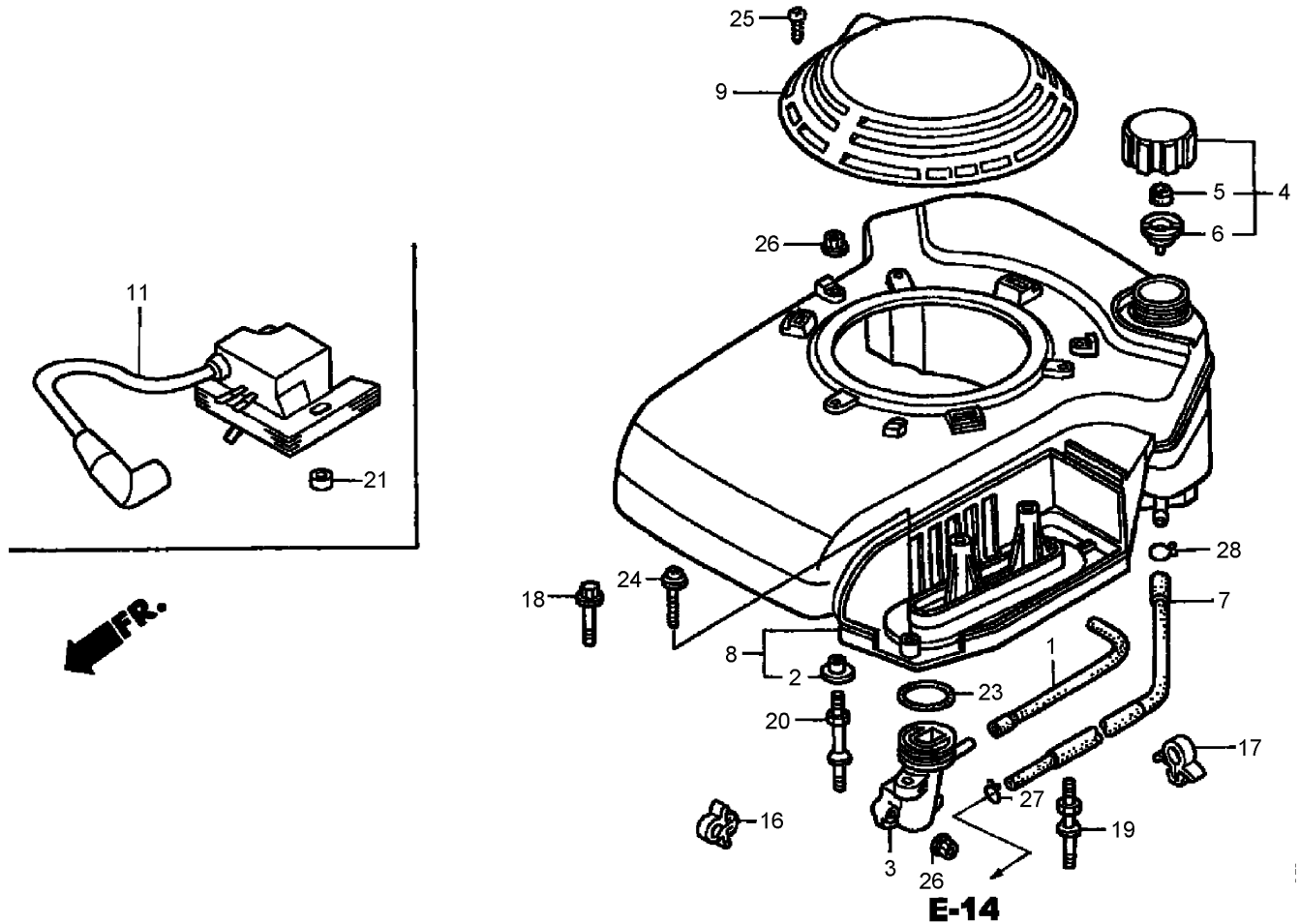
Ref	Part No.	Qty.	Description
14	12209-ZE6-003	1	Seal-Stem, Valve



Recoil Starter Assembly Honda GXV160K1-A1T

Ref	Part No.	Qty.	Description
1	28400-ZG9-W52	1	Recoil Starter ASM
2	28402-ZG9-802	1	Housing ASM
3	28415-ZG9-802	1	Pulley And Spring ASM
4	28419-ZG9-802	1	Pin-Center
5	28431-ZG9-802	1	Plate A-Friction
6	28432-ZG9-802	1	Plate B-Friction
7	28441-ZG9-802	1	Spring-Friction
8	28444-ZG9-802	1	Retainer
9	28461-ZE6-T02	1	Handle
11	28462-ZG9-W52	1	Rope (No.4.5x96in)
12	28463-ZE6-T02	1	Handle-Reinforcement
13	28485-ZE6-T02	2	Ratchet-Starter
14	28486-ZE6-T02	2	Spring-Dog

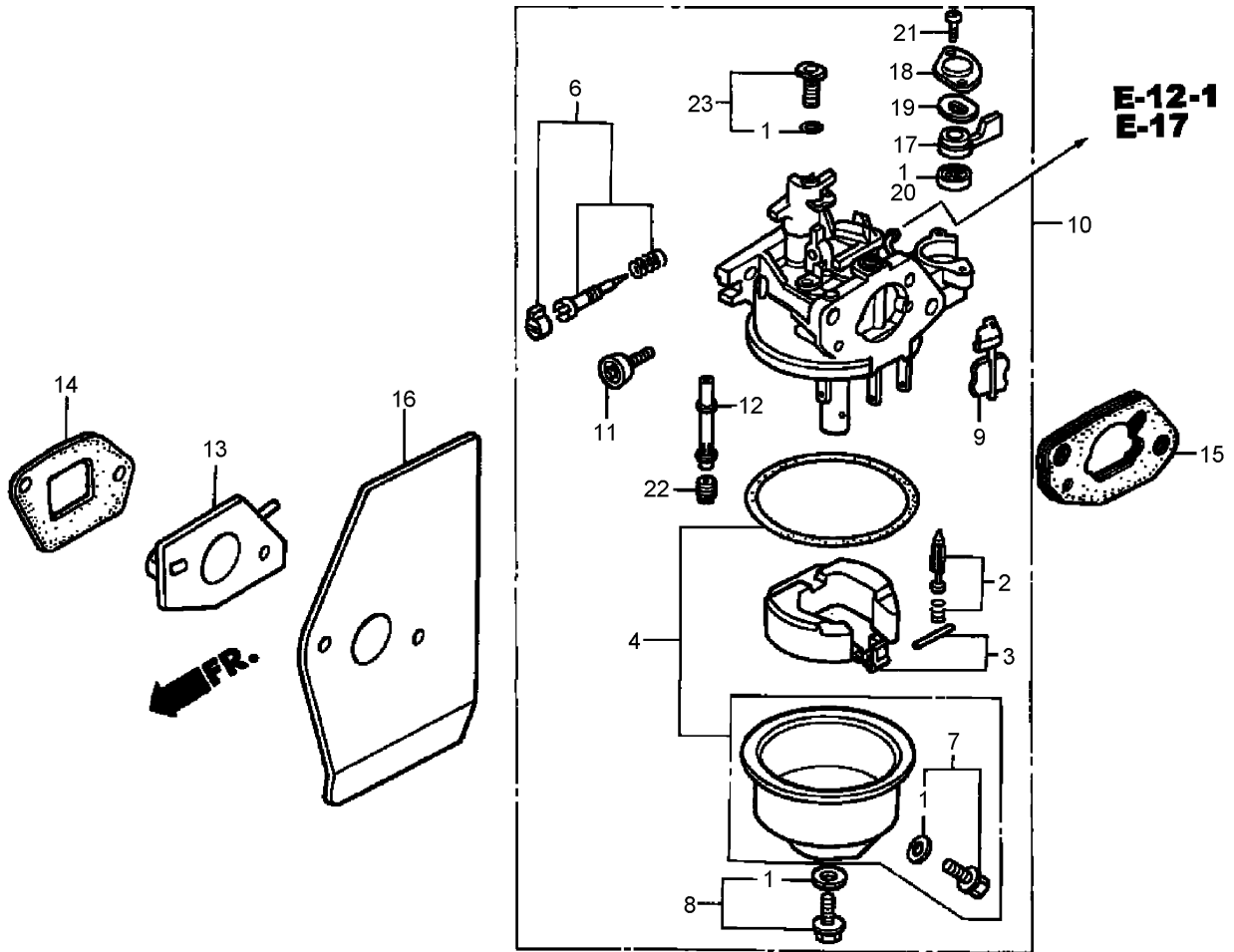
Ref	Part No.	Qty.	Description
15	87284-ZG9-W52	1	Mark-Number, Parts



Fan Cover Assembly Honda GXV160K1-A1T

Ref	Part No.	Qty.	Description
①	15721-ZE7-000	1	Tube-Breather
②	17216-PE2-003	3	Collar-Cleaner, Air
③	17410-ZE7-W00	1	Elbow-Cleaner, Air
④	17620-ZE7-000	1	Fuel Tank Cap ASM
⑤	17622-888-010	1	Sponge-Breather, Fuel Cap
⑥	17624-ZE7-000	1	Gasket-Cap, Fuel
⑦	17700-ZE7-W00	1	Fuel Tank Tube ASM
⑧	19610-ZE7-W11ZA	1	Cover-Fan
⑨	19615-ZG9-801ZA	1	Hood-Cover, Fan
⑪	30500-ZG9-801	1	Ignition Coil ASM
⑬	36103-ZE1-000	1	Holder-Wire, Stop Switch
⑰	46392-SC2-003	1	Clamp-Pipe, Brake
⑱	90015-883-000	1	Bolt-Flange (6x28)

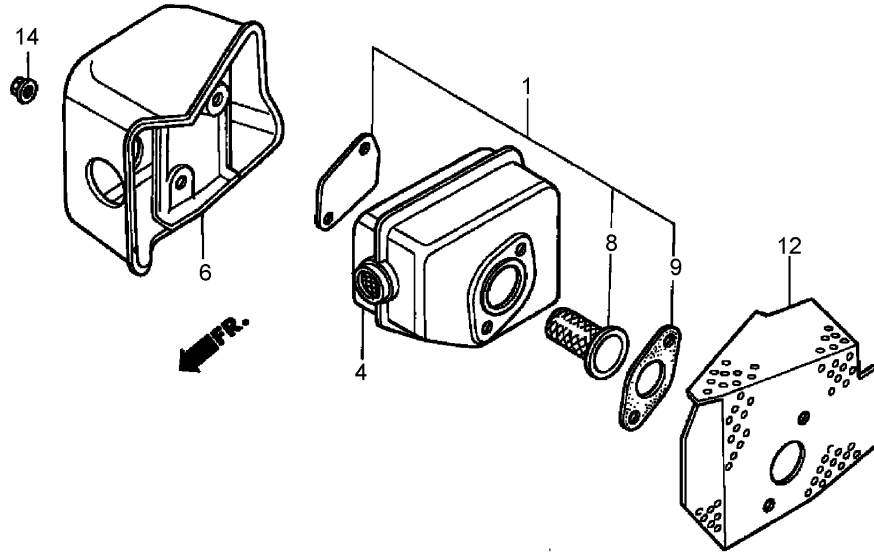
Ref	Part No.	Qty.	Description
⑲	90041-ZE7-W10	2	Bolt-Stud
⑳	90042-ZE7-W00	1	Bolt-Stud
㉑	90402-ZE7-W00	2	Collar-Special
㉓	91301-ZG9-800	1	O-Ring (33.3x3.5)
㉔	93891-06035-10	1	Screw-Washer (6x35)
㉕	93913-24580	1	Screw-Tapping (4x20)
㉖	94050-06000	5	Nut-Flange (6mm)
㉗	95002-02080	1	Clip-Tube (B8)
㉘	95002-50000	1	Clip-Tube (C9)



Carburetor Assembly Honda GXV160K1-A1T

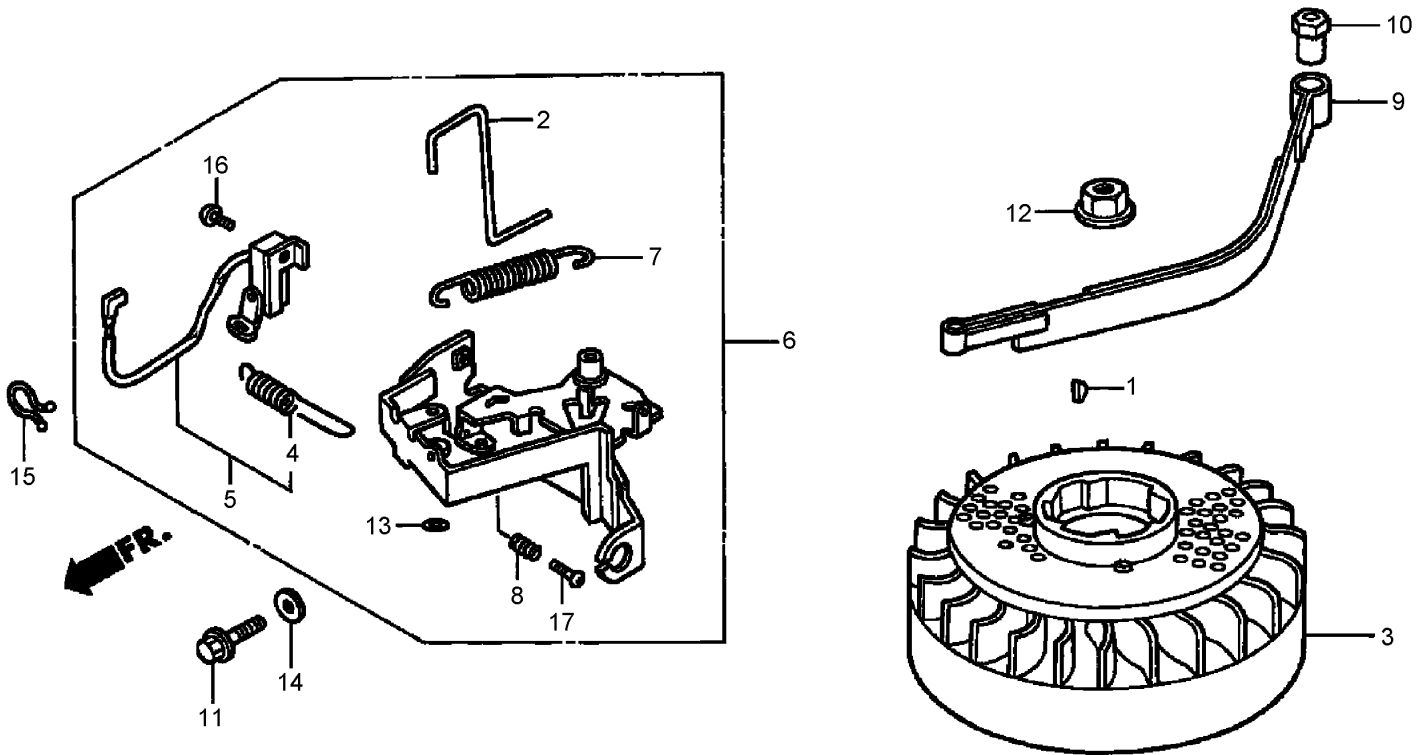
Ref	Part No.	Qty.	Description
1	16010-ZE0-025	1	Gasket Set
2	16011-ZE0-005	1	Valve Set-Float
3	16013-ZE0-005	1	Float Set
4	16015-ZE0-831	1	Chamber Set-Float
6	16016-ZH7-W01	1	Screw Set
7	16024-ZE1-811	1	Screw Set-Drain
8	16028-ZE0-005	1	Screw-Set
9	16045-ZE7-005	1	Choke Set
10	16100-ZE7-W21	1	Carburetor ASM
11	16124-ZE0-005	1	Screw-Stop, Throttle
12	16166-ZE7-W10	1	Nozzle-Main
13	16211-ZE7-000	1	Insulator-Carburetor
14	16212-ZE7-M10	1	Gasket-Insulator

Ref	Part No.	Qty.	Description
15	16220-ZE6-010	1	Spacer-Carburetor
16	16221-ZE7-M11	1	Gasket-Carburetor
17	16953-ZE1-812	1	Lever-Valve
18	16954-ZE1-812	1	Plate-Setting, Lever
19	16956-ZE1-811	1	Spring-Lever, Valve
20	16957-ZE1-812	1	Gasket-Valve
21	93500-03006-0H	2	Screw-Pan (3x6)
22	99101-ZH8-0600	1	Jet-Main (No. 60)
22	99101-ZH8-0620	1	Jet-Main (No. 62)
22	99101-ZH8-0650	1	Jet-Main (No. 65)
23	99204-ZE0-0350	1	Jet Set-Pilot (No. 35)



Muffler Assembly Honda GXV160K1-A1T

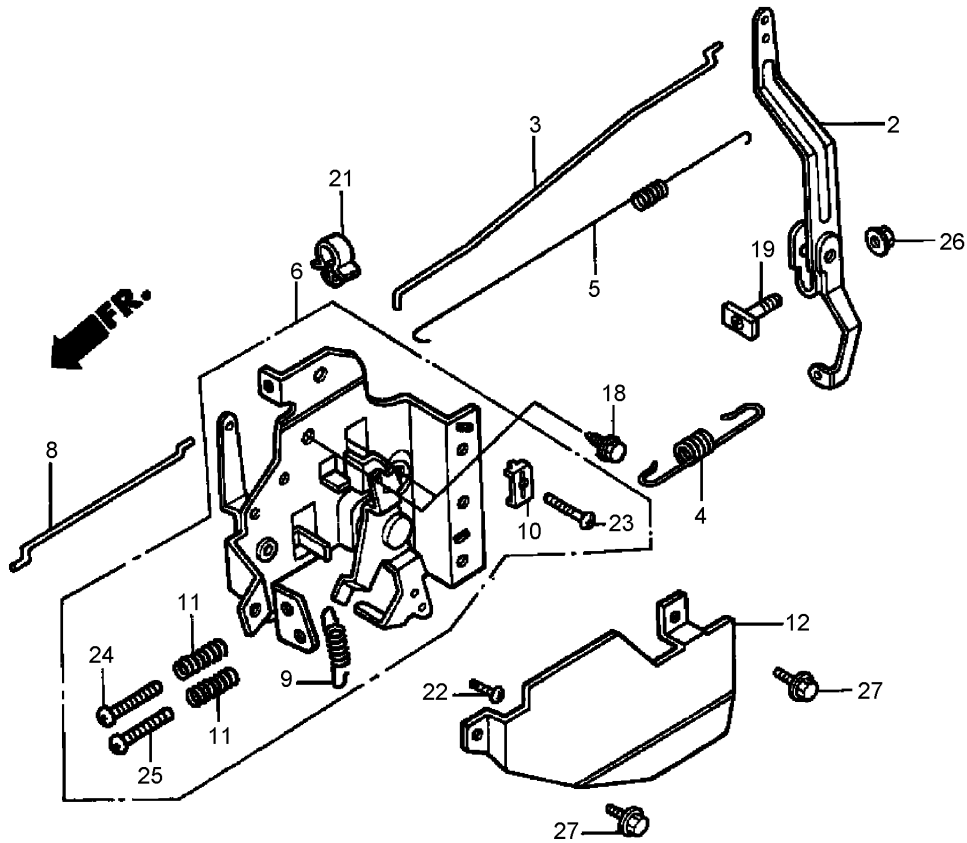
Ref	Part No.	Qty.	Description
1	06180-ZE6-820	1	Spark Arrester Kit
4	18310-ZG9-J01	1	Muffler
6	18320-ZG9-M01	1	Protector-Muffler
8	06180-888-505	1	Spark Arrester Kit
8	06180-888-810	1	Spark Arrester Kit
9	18381-ZE6-820	1	Gasket-Muffler
12	18381-ZG9-M00	1	Gasket-Muffler
14	90343-ZE6-000	2	Nut-Self Lock (6mm)



Flywheel Assembly Honda GXV160K1-A1T

Ref	Part No.	Qty.	Description
1	13331-357-000	1	Key-Woodruff (25x18)
2	16566-ZE7-W00	1	Rod-Governor Arm, Return
3	31105-ZE7-W00	1	Flywheel Asm
4	35129-ZG9-800	1	Spring-Switch, Control
5	36100-ZE7-W01	1	Engine Stop Switch Asm
6	75101-ZE7-W00	1	Brake Lever Asm
7	75113-ZG9-800	1	Spring-Brake, Lever
8	75114-ZG9-800	1	Spring-Brake, Adjusting
9	75120-ZG9-305	1	Brake
10	75123-ZG9-800	1	Collar-Brake, Shaft
11	90014-952-000	1	Bolt-Flange (6x14)
12	90201-878-003	1	Nut (14mm)
13	90310-ZB7-701	1	Nut-Push (2.6)

Ref	Part No.	Qty.	Description
14	90461-357-000	1	Washer-Sealing (6.5x12)
15	90630-ZE7-W01	1	Clip-Purse, Lock
16	93500-04008-0A	1	Screw-Pan (4x8)
17	93500-05012-0A	1	Screw-Pan (5x12)



Control Assembly Honda GXV160K1-A1T

Ref	Part No.	Qty.	Description
②	16551-ZE7-000	1	Arm-Governor
③	16555-ZE7-000	1	Rod-Governor
④	16561-ZE7-020	1	Spring-Governor (Std)
⑤	16562-ZE6-000	1	Spring-Return, Throttle
⑥	16570-ZE7-020	1	Control ASM
⑧	16573-ZE7-000	1	Rod-Choke
⑨	16576-ZE7-300	1	Spring-Lever
⑩	16576-891-000	1	Holder-Cable
⑪	16584-883-300	2	Spring-Adjusting, Control
⑫	16585-ZE7-000	1	Protector-Control
⑱	90013-883-000	2	Bolt-Flange (6x12)
⑲	90015-ZE5-010	1	Bolt-Arm, Governor
㉑	90659-680-013	1	Clip-Harness, Wire

Ref	Part No.	Qty.	Description
㉒	93500-04008-0A	1	Screw-Pan (4x8)
㉓	93500-05016-0A	1	Screw-Pan (5x16)
㉔	93500-05020-0A	1	Screw-Pan (5x20)
㉕	93500-05028-0A	1	Screw-Pan (5x28)
㉖	94050-06000	1	Nut-Flange (6mm)
㉗	95701-06010-00	2	Bolt-Flange (6x10)

NOTES

NOTES

NOTES

