



Mid-Size ProLine, T-Bar, Gear Drive 17HP with 44in Side Discharge Mower

Model No. 30327 - 250000001 and up.

Parts Catalog

Ordering Replacement Parts

To order replacement parts, please supply the part number, the quantity, and the description of each part desired.

Understanding Reference Numbers

Each Identified part in an illustration has a reference number. The reference number for a part also appears in the parts list, along with other information about the part.

This catalog uses two special reference number formats, one to indicate parts in a service assembly and another to indicate the quantity of a given part in an illustration.

Service Assembly Reference Numbers

Parts in service assemblies have reference numbers in the form a:b. The a represents the reference number of the entire service assembly and the b represents a sequential number unique to each part within the service assembly.

For example, a wheel assembly might be identified by reference number 6, the tire by 6:1, the valve by 6:2, and the wheel by 6:3. When you order the assembly identified by reference number 6, you receive all parts identified by reference numbers 6:1, 6:2, and 6:3. However, you may also order any part individually. Reference numbers of this type appear in illustrations and in part lists.

Reference Numbers Indicating Quantity

In an illustration, if a reference number indicates more than one part, the reference number has the form nX y. The n represents the quantity of the part, the X is the multiplication symbol, and the y represents the reference number.

For example, in an illustration, the reference number 2X 37 means that two of the parts identified by reference number 37 are indicated.

Contents

Description	Page	Description	Page
Engine and Clutch Assembly 3	Valve and Camshaft Assembly Kawasaki FH541V-AS30 19
Fuel Tank Assembly 4	Lubrication Equipment Assembly Kawasaki FH541V-AS30 20
Lower Control Assembly 5	Cooling Equipment Assembly Kawasaki FH541V-AS30 21
Transmission Drive Assembly 6	Electric Equipment Assembly Kawasaki FH541V-AS30 22
Wheel Drive and Brake Assembly 7	Control Equipment Assembly Kawasaki FH541V-AS30 23
Upper Handle Assembly 8	Carburetor Assembly Kawasaki FH541V-AS30 24
Control Panel Assembly 9	Muffler and Air Filter Assembly Kawasaki FH541V-AS30 25
Carrier Frame Assembly 10	Fuel Tank/Fuel Valve Assembly Kawasaki FH541V-AS30 26
Spindle, Pully and Belt Assembly 11	Starter Assembly Kawasaki FH541V-AS30 27
Spindle Assembly No. 106-0786 12	Decal Assembly Kawasaki FH541V-AS30 28
Spindle Assembly No. 106-0784 13	Attachments and Accessories List 29
Deck Assembly 14		
Deflector Assembly No. 107-4194 15		
Drive Belt and Tensioner Assembly 16		
Cylinder/Crankcase Assembly Kawasaki FH541V-AS30 17		
Piston/Crankshaft Assembly Kawasaki FH541V-AS30 18		

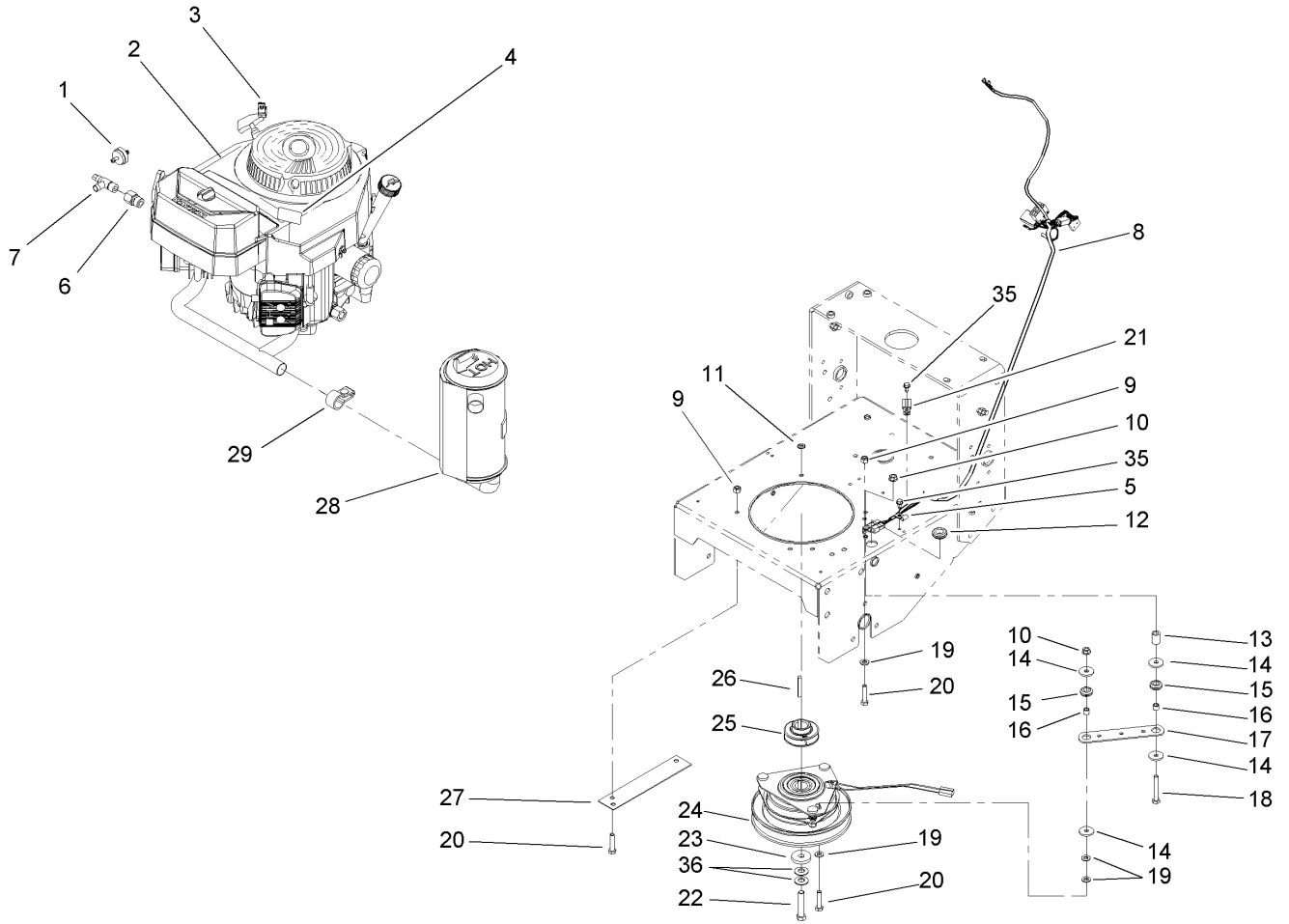
Part Description Abbreviations

Part descriptions in this catalog may include the following abbreviations.

AR. as required	HYD. hydraulic
ASM. assembly	INC. incorporated
CARR. carriage	LH. left hand
DEG. degrees	NI. nylon insert
FH. flat head	PPH. phillips pan head
GA. gauge	PTH. phillips truss head
HF. hex flange	PTO. power take off
HH. hex head	RH. right hand
HHF. hex head flange	SFH. slotted fillister head
HHFTF. hex head flange thread forming	SHH. slotted hex head
HJ. hex jam	SHWH. slotted hex washer head
HLH. hex lag head	SPH. slotted pan head
HOC. height-of-cut	SQH. square head
HS. hex	SRH. slotted round head
HSBH. hex socket button head	STD. standard
HSFH. hex socket flat head	TAP. self tapping
HSH. hex socket head	TTH. torx truss head
HWH. hex washer head	WH. wing head
HWHTF. hex washer head thread forming	

Footnotes

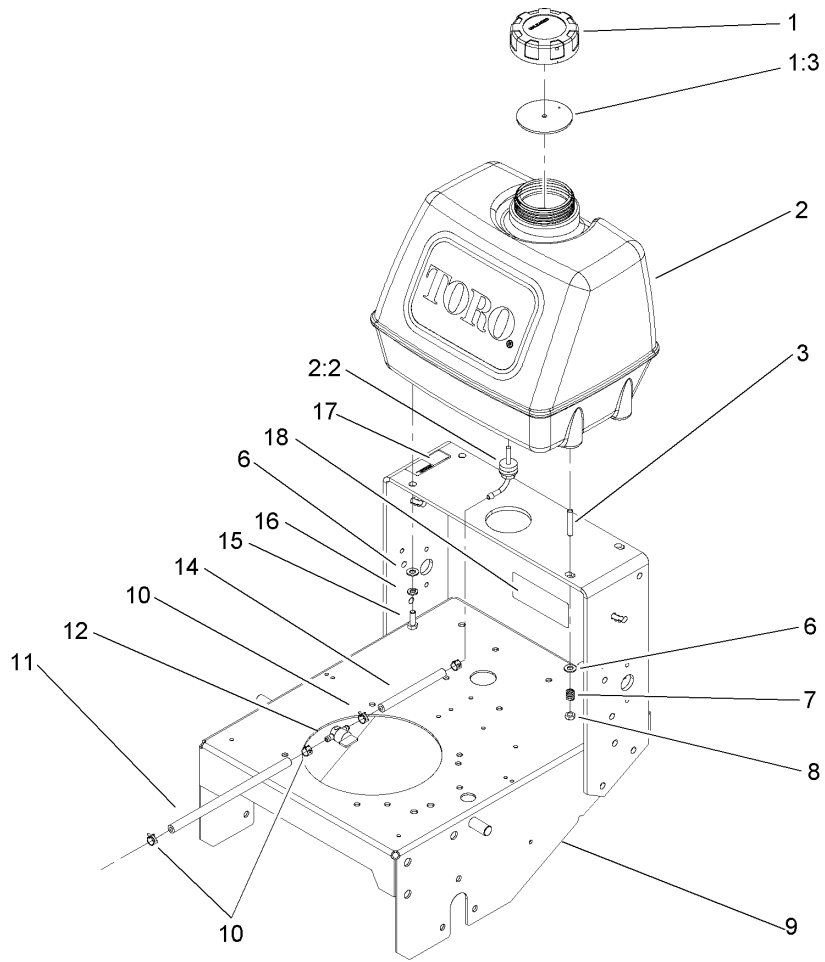
- ❶ Not illustrated
- ❷ Not serviced separately
- ❸ Obtain parts from your local Kawasaki dealer



Engine and Clutch Assembly

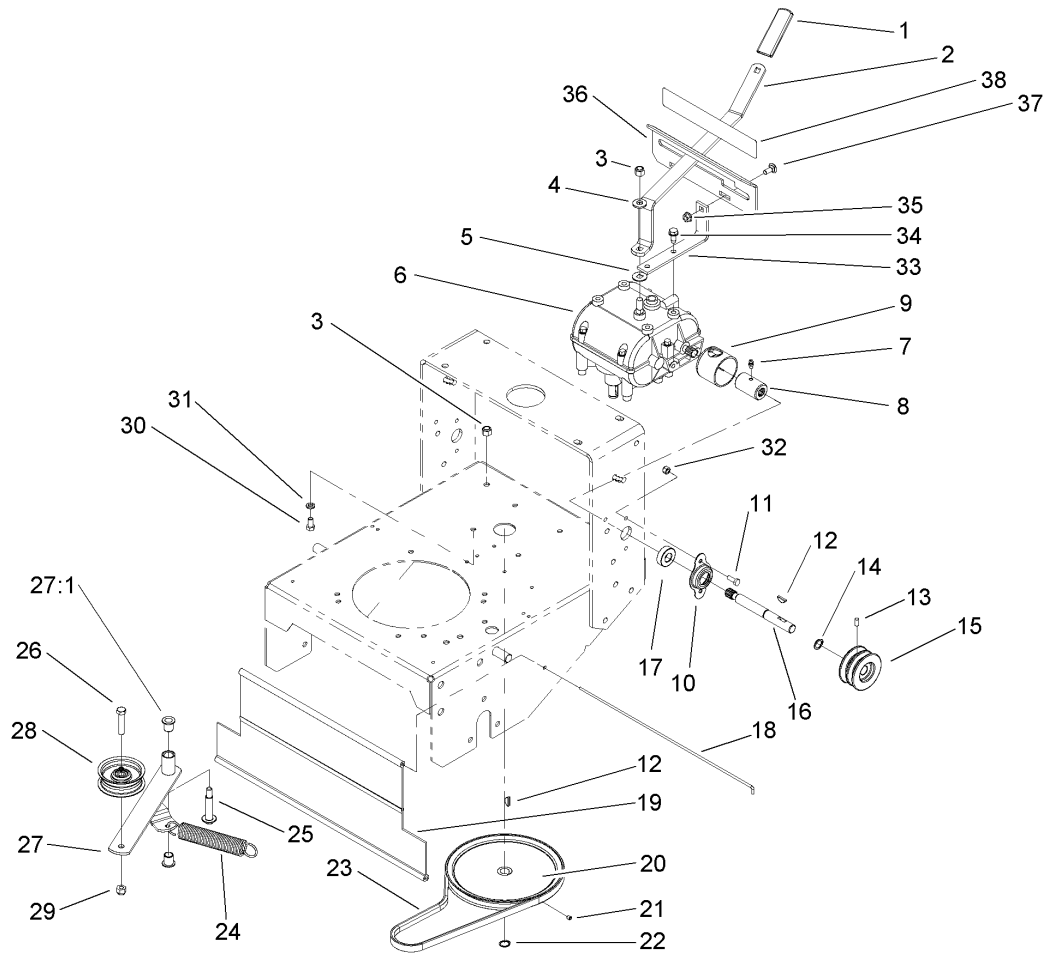
Ref	Part No.	Qty.	Description
1	56-6360	1	Filter-Fuel
2		1	Engine-Kawasaki, Fh541v-As30
3	2412-87	1	Clamp-Cable
4	106-0699	1	Decal-Warning, Hot Surfaces
5	2412-72	1	Clip-Closed, Insulated
6	103-1966	1	Adapter
7	103-1965	1	Valve-Drain, Oil
8	104-8137	1	Harness-Wire
9	3296-29	4	Nut-Lock, NI
10	32128-20	2	Nut-HF
11	3255-8	1	Washer-Lock
12	237-124	1	Grommet
13	104-6373	1	Tube-Retainer
14	1-613235	4	Washer
15	1-633630	2	Grommet-Brake
16	1-633545	2	Spacer
17	1-633543-03	1	Strap-Clutch, Brake
18	322-11	1	Screw-HH
19	3256-23	5	Washer-Flat
20	322-7	5	Screw-HH
21	2412-134	1	R-Clamp
22	3212-9	1	Screw-HH
23	107-4136	1	Washer
24	105-2635	1	Clutch / Brake

Ref	Part No.	Qty.	Description
25	107-4112	1	Pulley-Drive
26	608006	1	Key-Square
27	94-5847-01	1	Cover-Pulley
28	100-6467	1	Muffler
29	103-5465	1	Clamp-Muffler
35	12-3270	2	Screw
36	1-603610	2	Washer-Spring
99	103-1964	1	Hose-Drain, Oil



Fuel Tank Assembly

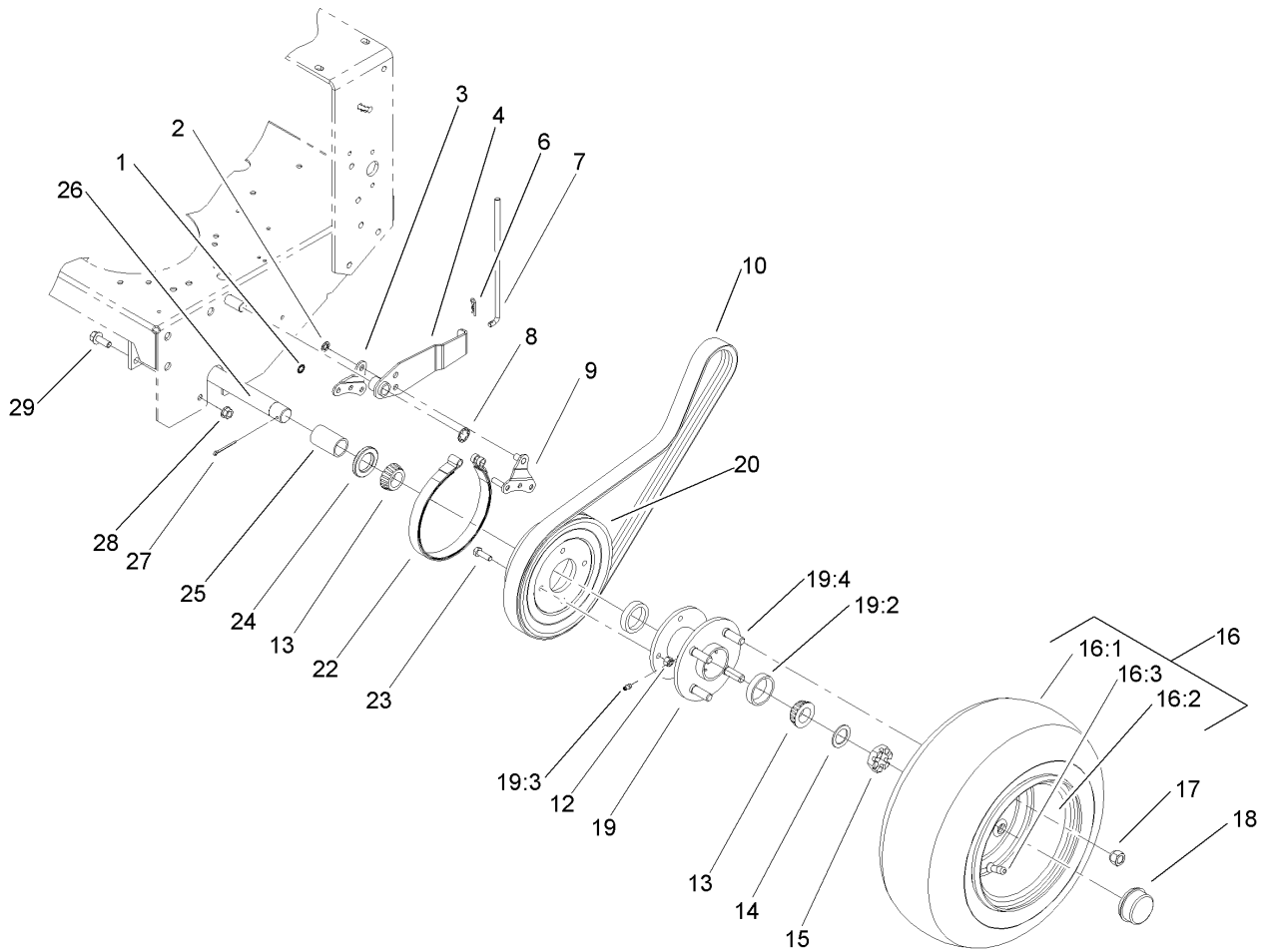
Ref	Part No.	Qty.	Description
1	88-3980	1	Gas Cap ASM
1:3	88-4010	1	Gasket-Cap, Gas
2	106-0730	1	Fuel Tank ASM
2:2	103-2605	1	Fitting-Fuel, Bulkhead
3	104-8121	2	Stud-Threaded
6	3256-23	4	Washer-Flat
7	1-633349	2	Spring-Tank, Fuel
8	3296-47	2	Nut-Lock, NI
9	106-0546-01	1	Gear Frame ASM
10	2412-98	4	Clamp
11	47-2982	1	Hose-Fuel
12	1-603770	1	Valve-Fuel
14	47-2980	1	Hose-Fuel
15	322-4	2	Screw-HH
16	3253-4	2	Washer-Lock
17	95-2814	1	Decal-Shut Off, Fuel
18	98-0776	1	Decal-Caution



Transmission Drive Assembly

Ref	Part No.	Qty.	Description
1	47-1970	1	Grip
2	98-3274-03	1	Lever-Shift
3	3296-6	2	Nut-Lock
4	98-5975	1	Washer-Belleville
5	1-323379	1	Washer
6	1-323500	1	Transmission
7	302-5	2	Fitting-Grease
8	1-323680	2	Coupler
9	51-4220	2	Guard-Coupler
10	1-323254	2	Flange-Output
11	321-4	4	Screw-HH
12	3257-5	3	Key-Woodruff
13	3245-9	2	Screw-Set
14	32151-62	2	Ring-Retaining
15	105-2698	2	Pulley-Transmission
16	104-1102	2	Shaft-Output
17	1-323252	2	Bearing-Shaft
18	95-1529	1	Rod-Shield
19	95-1526	1	Shield-Trailing
20	105-5646	1	Pulley-Driven
21	3245-1	1	Screw-Set, HSH
22	32120-64	1	Ring-Snap, External
23	105-5668	1	V-Belt
24	68-2190	1	Spring

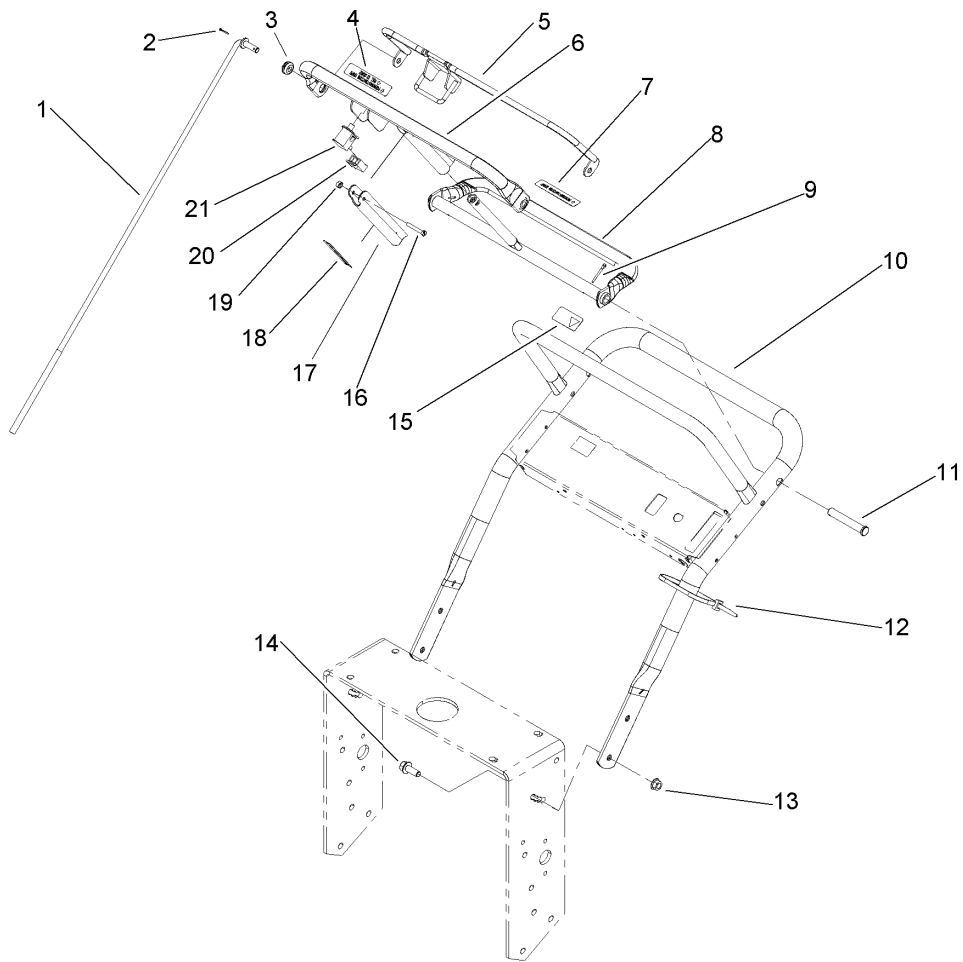
Ref	Part No.	Qty.	Description
25	27-6230	1	Bolt-Wheel
26	323-9	1	Screw-HH
27	16-7509	1	Lever-Idler
27:1	256-155	2	Bushing-Flange
28	62-4540	1	Pulley
29	3296-39	1	Nut-Lock, NI
30	322-2	4	Screw-HH
31	3253-4	4	Washer-Lock
32	3296-42	4	Nut-Lock, NI
33	1-323389-03	2	Bracket-Plate, Shift
34	9264964	4	Screw-Hwh, Thread Cut
35	32128-20	2	Nut-HF
36	1-323387-03	1	Plate-Shift
37	3230-1	2	Bolt-CARR
38	98-3256	1	Decal-Speed, Ground



Wheel Drive and Brake Assembly

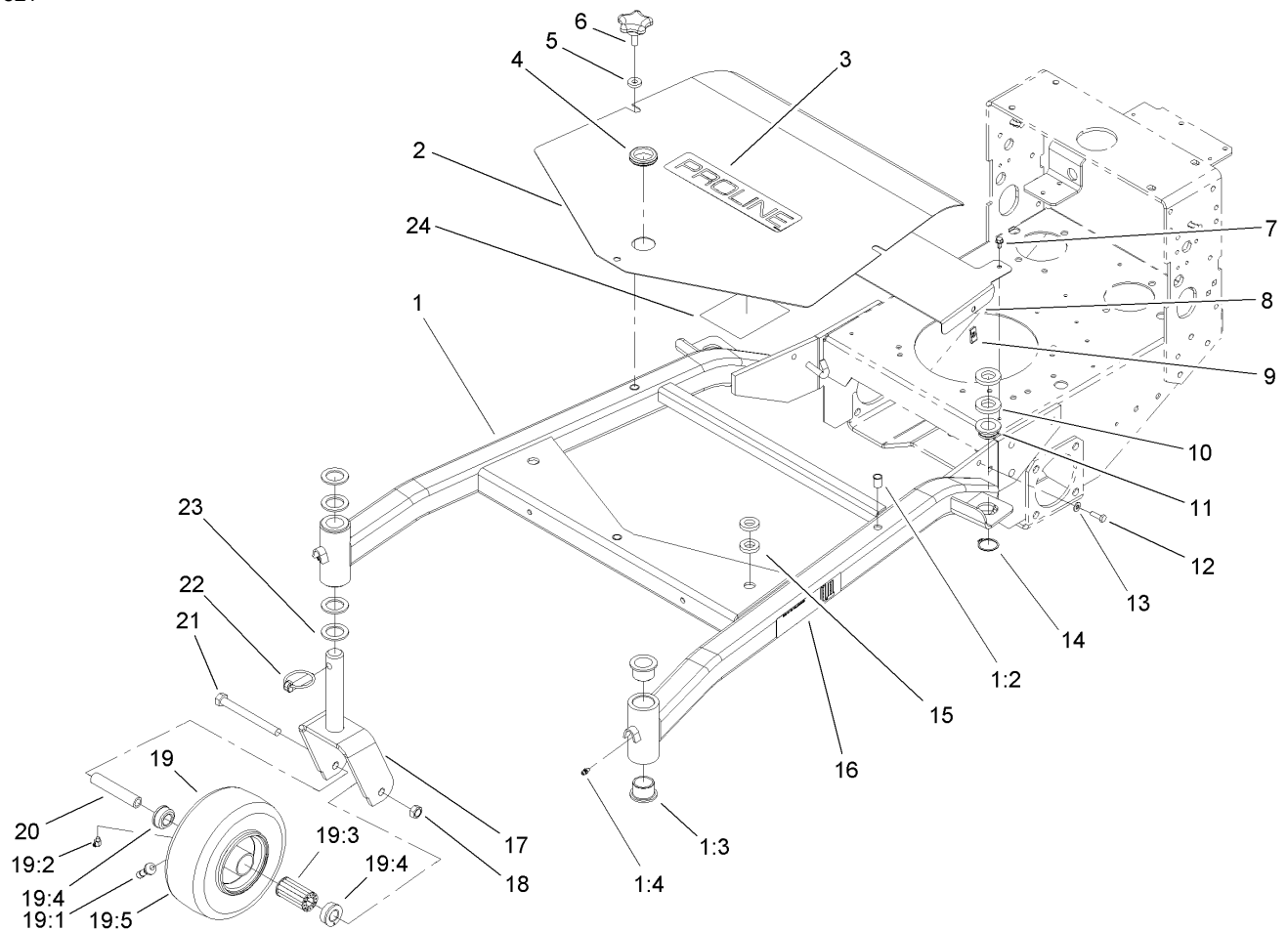
Ref	Part No.	Qty.	Description
1	32151-72	4	Ring-Retaining
2	32151-56	2	Ring-Retaining, External
3	106-8792	2	Plate-Link, Brake
4	106-8779-01	2	Brake Arm ASM
6	3290-307	2	Pin-Hair
7	51-4580	2	Rod-Brake
8	32151-40	2	Ring-Retaining
9	106-8773	2	Brake Link ASM
10	51-4290	2	V-Belt
12	3296-29	8	Nut-Lock, NI
13	254-94	4	Bearing-Cone, Tapered
14	1-523157	2	Washer-Spacer
15	1-809082	2	Nut-SHH
16	106-0892	2	Wheel And Tire ASM
16:1	104-6322	1	Tire
16:2	106-0893	1	Wheel
16:3	232-27	1	Stem-Valve
17	242-50	8	Nut-Lug
18	241-119	2	Cap-Dust
19	1-413333	2	Hub/wheel ASM
19:2	254-72	2	Bearing-Cup, Tapered
19:3	302-19	1	Fitting-Grease
19:4	1-633926	4	Stud-Wheel
20	106-5544	2	Pulley-Wheel

Ref	Part No.	Qty.	Description
22	1-323262	2	Band-Brake
23	322-5	8	Screw-HH
24	1-543511	2	Seal-Grease
25	104-1197	2	Spacer-Wheel
26	104-1196-01	1	Axle ASM
27	1-806800	2	Pin-Cotter
28	32128-21	6	Nut-HF
29	3234-11	6	Screw-HHF



Upper Handle Assembly

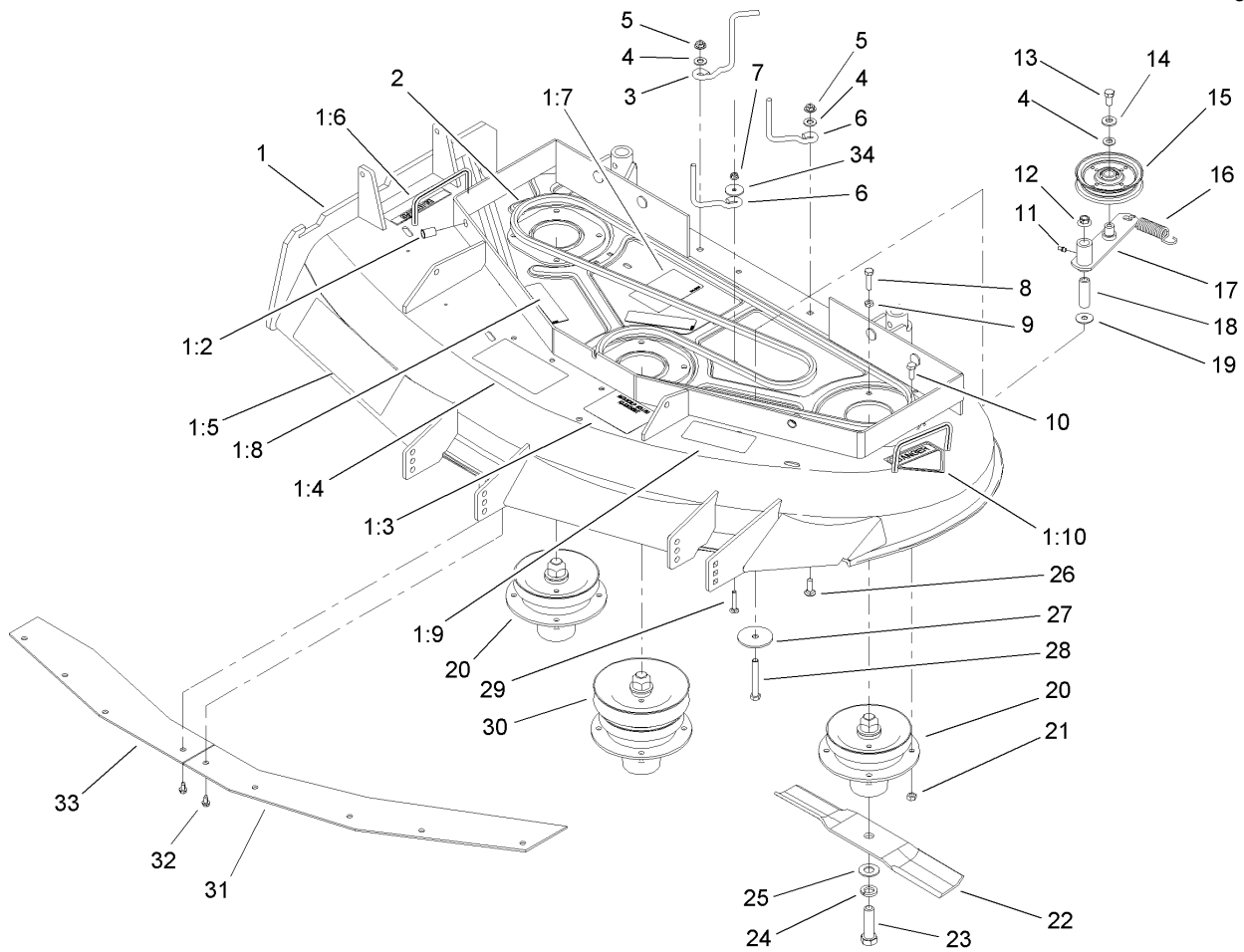
Ref	Part No.	Qty.	Description				
1	105-4677	2	Rod-Control				
2	3272-4	2	Pin-Cotter				
3	237-141	2	Grommet-Rubber				
4	82-2290	1	Decal				
5	82-7680-03	1	Bail ASM				
6	82-7690-03	1	Bar-Control				
7	82-2280	1	Decal				
8	106-5477-03	1	Control Pivot ASM				
9	3272-11	2	Pin-Cotter				
10	105-3158-03	1	Upper Handle ASM				
11	283-55	2	Pin-Clevis				
12	3290-378	1	Tie-Cable				
13	32128-21	4	Nut-HF				
14	3234-11	4	Screw-HHF				
15	98-4387	1	Decal-Protection, Ear				
16	32105-1	1	Screw-SHH				
17	51-4850-03	1	Lever-Brake, Parking				
18	52-2010	1	Decal-Lever, Parking				
19	3296-2	1	Nut-Lock				
20	218-595	1	Connector-Body				
21	82-2190	1	Switch-Bail				



Carrier Frame Assembly

Ref	Part No.	Qty.	Description
1	106-0707	1	Carrier Frame ASM
1:2	32148-9	3	Insert-Nut
1:3	94-1291	4	Bushing
1:4	302-5	2	Fitting-Grease
2	106-0537-01	1	Cover
3	106-0719	1	Decal
4	240-3	1	Grommet-Rubber
5	106-0565	3	Washer-Rubber
6	106-0887	3	Knob
7	12-3270	2	Screw
8	105-9389-01	1	Shield-Heat
9	3290-199	2	Nut-Speed
10	104-1105	4	Spacer-Support, Deck
11	1-513336	2	Bushing-Deck
12	321-5	2	Screw-HH
13	3256-22	2	Washer-Flat
14	32120-33	2	Ring-Retaining
15	105-0842	4	Spacer
16	106-0635	2	Decal-HOC
17	105-3159-01	2	Castor Fork ASM
18	32153-5	2	Nut-Lock, Side
19	100-6451	2	Castor Wheel ASM
19:1	232-27	1	Stem-Valve
19:2	302-11	1	Fitting-Lube, 45 DEG

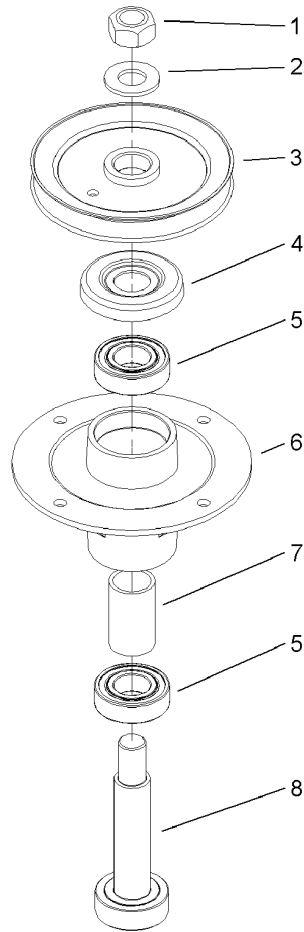
Ref	Part No.	Qty.	Description
19:3	83-4740	1	Bearing
19:4	62-5580	2	Bearing-Outside
19:5	100-6452	1	Tire-Tubeless
20	100-6453	2	Bushing-Spanner
21	325-19	2	Screw-HH
22	283-71	2	Pin-Lynch
23	3-6781	8	Washer-Thrust
24	106-5503	1	Decal-Service, Hydro Tbar
24	106-5505	1	Decal-Service, Gear Tbar
24	106-5511	1	Decal-Service, Gear Pistol Grip
24	106-5513	1	Decal-Service, Hydro Pistol Grip



Spindle, Pulley and Belt Assembly

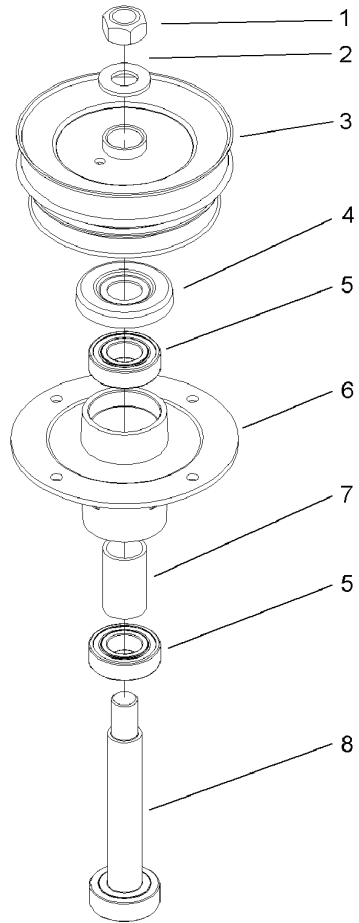
Ref	Part No.	Qty.	Description
1	107-4212	1	Deck ASM
1:2	32148-10	2	Insert-Threaded
1:3	106-5532	1	Decal-Scalp, Anti
1:4	66-1340	1	Decal-Danger
1:5	106-0704	1	Decal
1:6	93-1122	1	Decal-Danger
1:7	104-8186	1	Decal-Routing, Belt
1:8	67-5360	3	Decal-Danger
1:9	68-8340	1	Decal-Torque
1:10	43-8480	1	Decal-Danger
2	27-1160	1	V-Belt
3	106-5488	1	Guide-Belt
4	3256-24	3	Washer-Flat
5	32128-13	2	Nut-HF
6	52-4780	2	Rod-Belt
7	32128-10	1	Nut-Lock, HHF
8	322-6	1	Screw-HH
9	3218-2	1	Nut-Jam
10	322-4	11	Screw-HH
11	302-19	1	Fitting-Grease
12	32128-19	1	Nut-HF
13	323-4	1	Screw-HH
14	98-5975	1	Washer-Belleville
15	65-5940	1	Pulley-Idler

Ref	Part No.	Qty.	Description
16	54-2730	1	Spring-Extension
17	104-8110	1	Idler Arm ASM
18	104-8113	1	Tube-Idler
19	52-2860	1	Washer
20	106-0786	2	Spindle Housing ASM
21	32152-1	12	Nut-Lock, Cone
22	54-0010-03	3	Blade
23	51-4060	3	Screw-Blade
24	3253-8	3	Washer-Lock
25	3256-27	3	Washer-Flat
26	3230-2	2	Bolt-CARR
27	20-9530	1	Washer-End
28	323-13	1	Screw-HH
29	3229-4	1	Screw-CARR
30	106-0784	1	Spindle Housing ASM
31	100-3258-03	1	Plate-Blowout, LH
32	12-3270	9	Screw
33	100-3257-03	1	Plate-Blowout, RH
34	1-503033	1	Washer-Retainer, Pulley



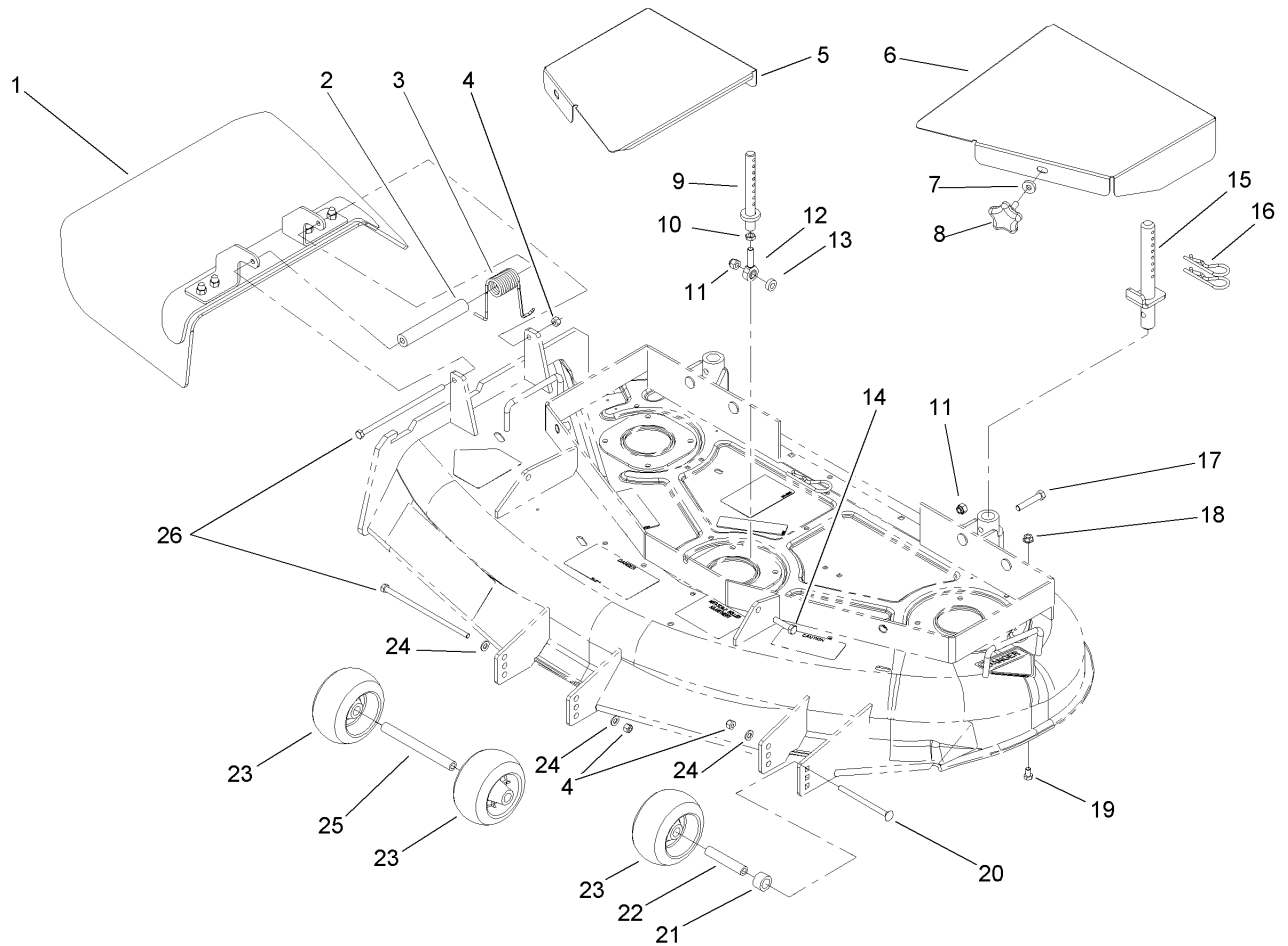
Spindle Assembly No. 106-0786

Ref	Part No.	Qty.	Description				
1	3219-7	1	Nut-Hex				
2	7-4150	1	Washer				
3	104-1181	1	Pulley ASM				
4	106-0873	1	Shield-Bearing				
5	104-6325	2	Bearing				
6	106-0818	1	Housing-Spindle				
7	106-0794	1	Spacer-Bearing				
8	106-0780	1	Shaft-Spindle				



Spindle Assembly No. 106-0784

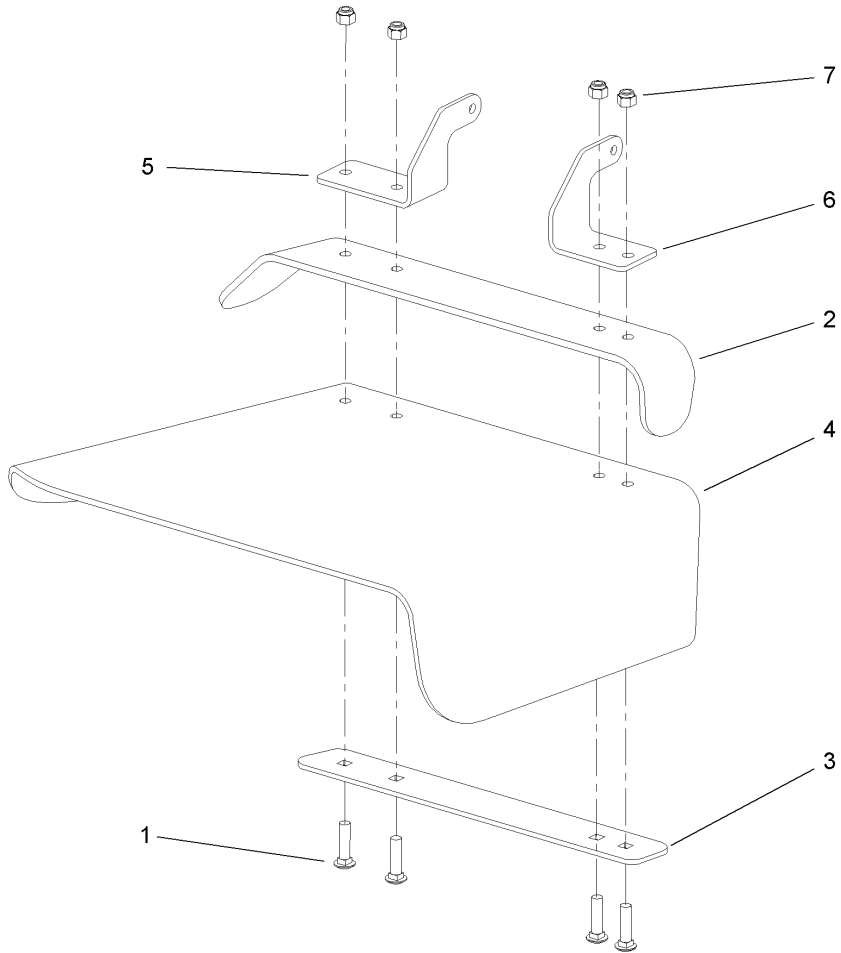
Ref	Part No.	Qty.	Description				
1	3219-7	1	Nut-Hex				
2	7-4150	1	Washer				
3	104-1116	1	Pulley And Hub ASM				
4	106-0873	1	Shield-Bearing				
5	104-6325	2	Bearing				
6	106-0818	1	Housing-Spindle				
7	106-0794	1	Spacer-Bearing				
8	106-0779	1	Shaft-Spindle				



Deck Assembly

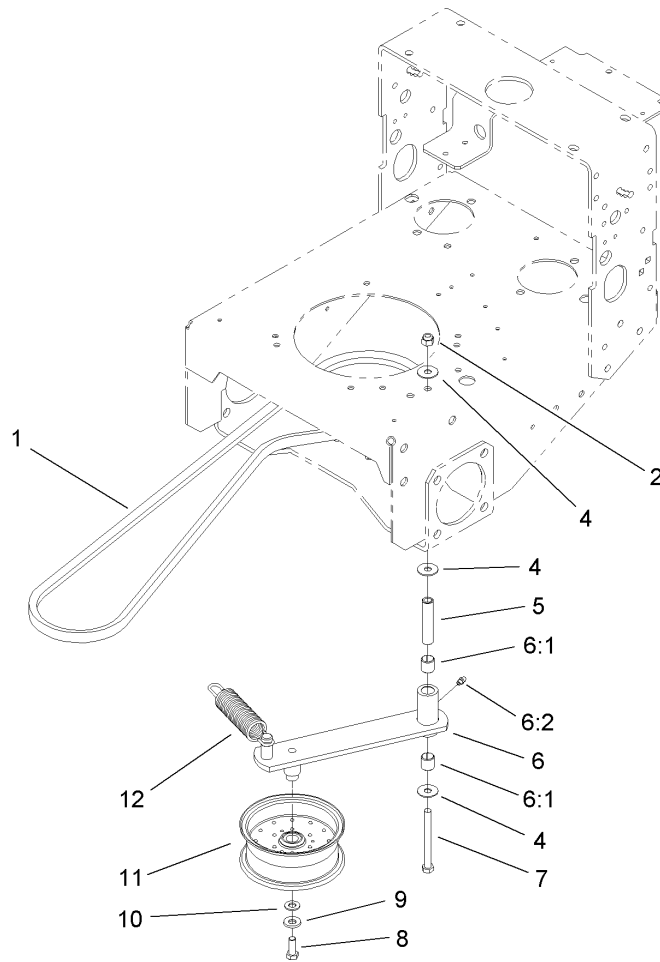
Ref	Part No.	Qty.	Description
1	107-4194	1	Deflector ASM
2	105-4622	1	Spacer
3	104-8554	1	Spring-Torsion
4	3296-29	3	Nut-Lock, NI
5	106-3363-01	1	Cover-Belt, RH
6	106-3362-01	1	Cover-Belt, LH
7	106-0565	2	Washer-Rubber
8	106-0887	2	Knob
9	106-0684	2	Front Pin ASM
10	3220-3	2	Nut-Jam
11	3296-39	4	Nut-Lock, NI
12	1-613204	2	Balljoint
13	104-1156	2	Spacer
14	323-8	2	Screw-HH
15	106-3365	2	Rear Pin ASM
16	3290-256	6	Pin-Hair
17	323-10	2	Screw-HH
18	32128-20	4	Nut-HF
19	322-1	4	Screw-HH
20	3230-30	1	Screw-CARR
21	106-0563	1	Spacer-Wheel
22	106-0545	1	Bushing-Roller
23	1-603299	3	Roller-Anti Scalp
24	3256-23	3	Washer-Flat

Ref	Part No.	Qty.	Description
25	98-5967	1	Spacer-Wheel
26	322-50	2	Screw-HH



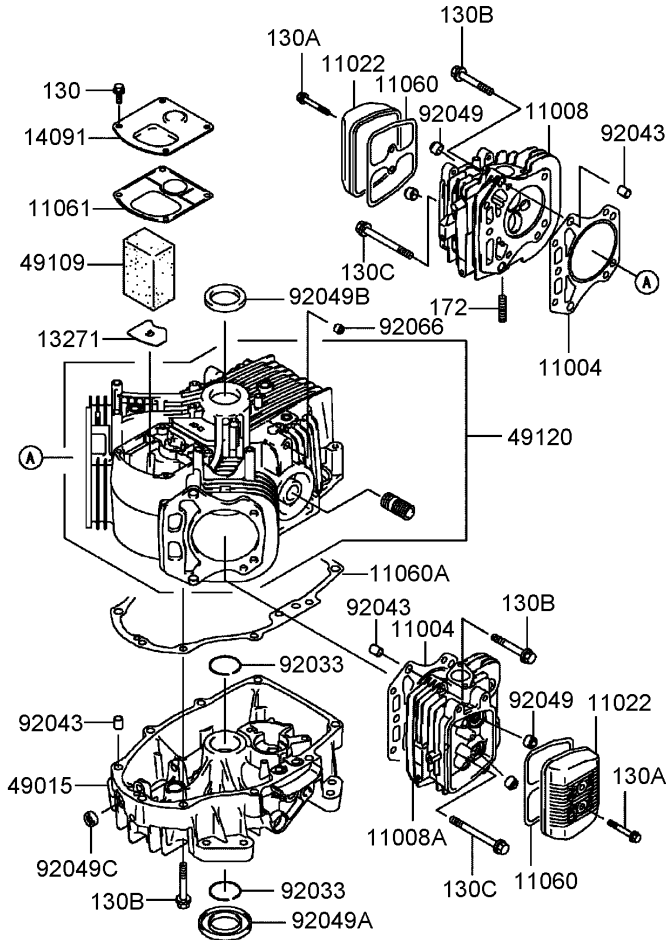
Deflector Assembly No. 107-4194

Ref	Part No.	Qty.	Description
1	3231-4	4	Screw-CARR
2	106-3246-01	1	Deflector
3	106-3248-03	1	Strap-Discharge
4	108-5029	1	Deflector-Rubber
5	107-4197-01	1	Bracket-Hinge, Rear
6	107-4196-01	1	Bracket-Hinge, Front
7	3296-39	4	Nut-Lock, NI



Drive Belt and Tensioner Assembly

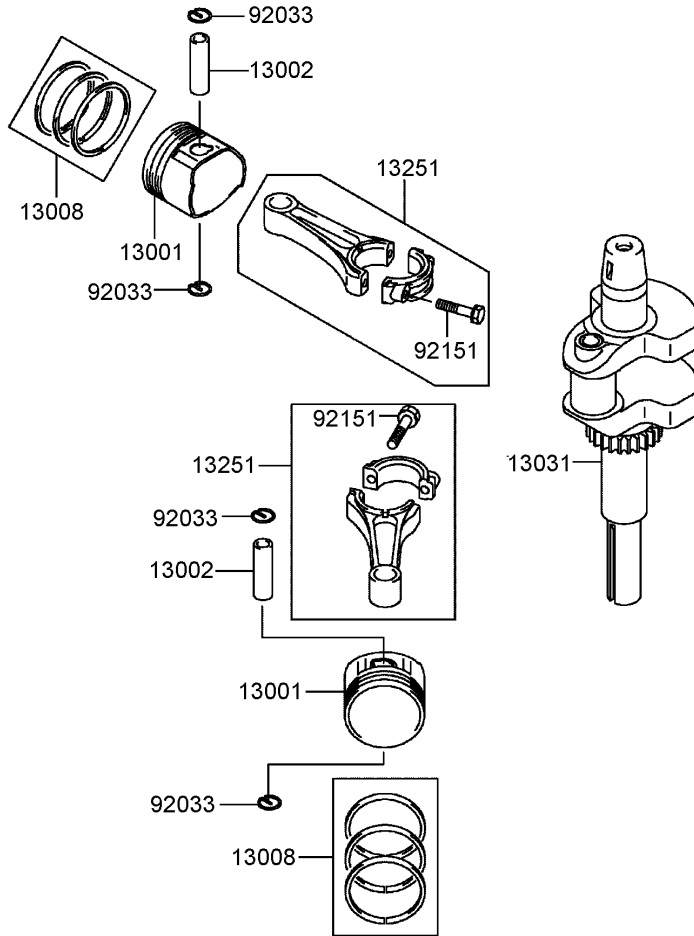
Ref	Part No.	Qty.	Description
1	104-8120	1	V-Belt, PTO
2	3296-39	1	Nut-Lock, NI
4	52-2860	3	Washer
5	104-6377	1	Tube-Idler
6	106-0734	1	Idler Arm ASM
6:1	1-513034	2	Sleeve-Bearing
6:2	302-5	1	Fitting-Grease
7	323-42	1	Screw-HH
8	323-6	1	Screw-HH
9	98-5975	1	Washer-Belleville
10	3256-24	1	Washer-Flat
11	1-413099	1	Pulley-Idler
12	105-8443	1	Spring-Extension



Cylinder/Crankcase Assembly Kawasaki FH541V-AS30

Ref	Part No.	Qty.	Description
③11004	11004-7010	2	Gasket-Head
③11008	11008-6043	1	Head-Cylinder, No. 1
③11008A	11008-7020	1	Head-Cylinder, No. 2
③11022	11022-7003	2	Case-Rocker
③11060	11060-7001	1	Gasket-Case, Rocker
③11060A	11060-7008	1	Gasket-Cover, Crankcase
③11061	11061-7001	1	Gasket-Breather
③13271	13271-7016	1	Plate
③14091	14091-7006	1	Cover
③49015	49015-6253	1	Cover-Crankcase
③49109	49109-7002	1	Element-Breather
③49120	49120-7023	1	Crankcase-Comp
③92033	92033-7003	2	Ring-Snap
③92043	92043-7001	6	Pin
③92049	92049-7001	4	Seal-Oil, Rvc2 (6x11x10.2)
③92049A	92049-7015	1	Seal-Oil, Sd (35x62x8 L Hs)
③92049B	92049-7016	1	Seal-Oil, Sd (35x48x8 R Hs)
③92049C	92049-7019	1	Seal-Oil, So (8x14x5 Hs)
③92066	92066-7002	1	Plug
③130	130B0612	4	Bolt-Flanged
③130A	130B0640	4	Bolt-Flanged
③130B	130T0850	17	Bolt-Flanged
③130C	130T0875	2	Bolt-Flanged
③172	172G0818	4	Bolt-Stud

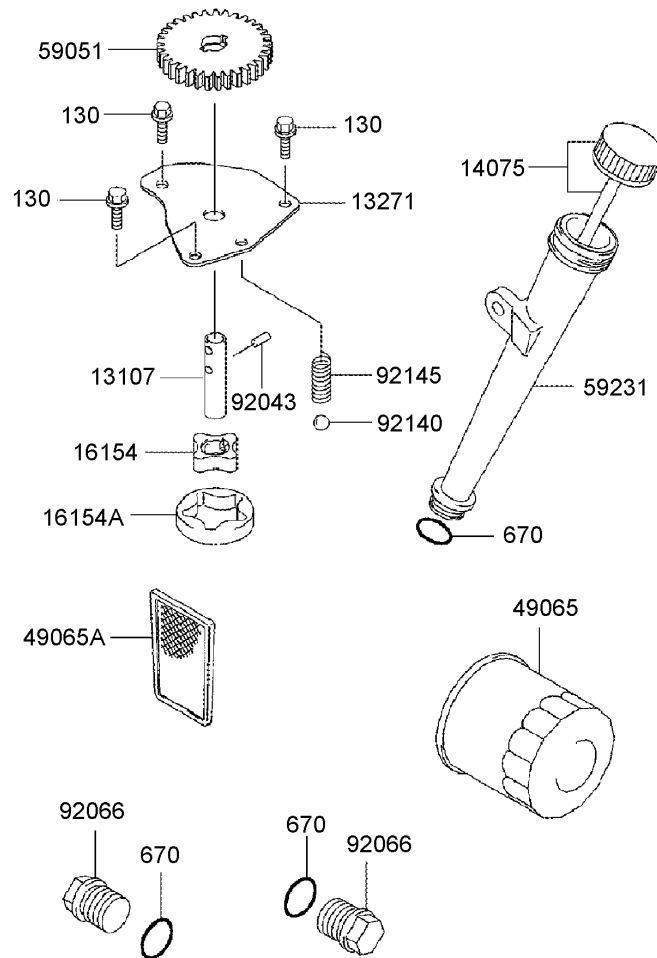
--	--	--	--	--



Piston/Crankshaft Assembly Kawasaki FH541V-AS30

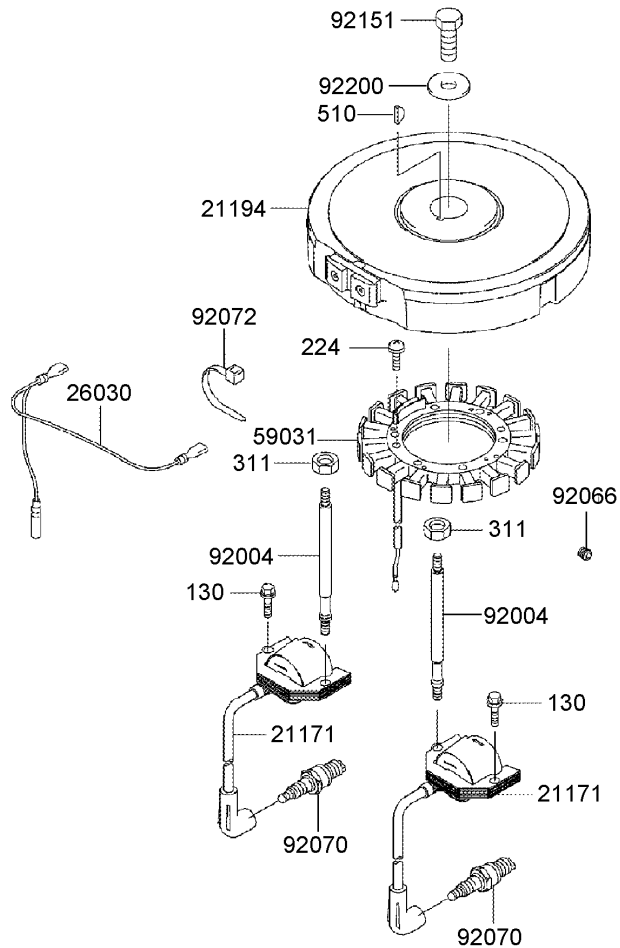
Ref	Part No.	Qty.	Description
③ 13001	13001-7010	2	Piston-Engine
③ 13002	13002-7001	2	Pin-Piston
③ 13008	13008-6060	2	Piston Ring Set
③ 13031	13031-7036	1	Crankshaft-Comp
③ 13251	13251-7010	2	Connecting Rod ASM
③ 92033	92033-7005	4	Ring-Snap
③ 92151	92151-7017	4	Bolt (6x35)

--	--	--	--



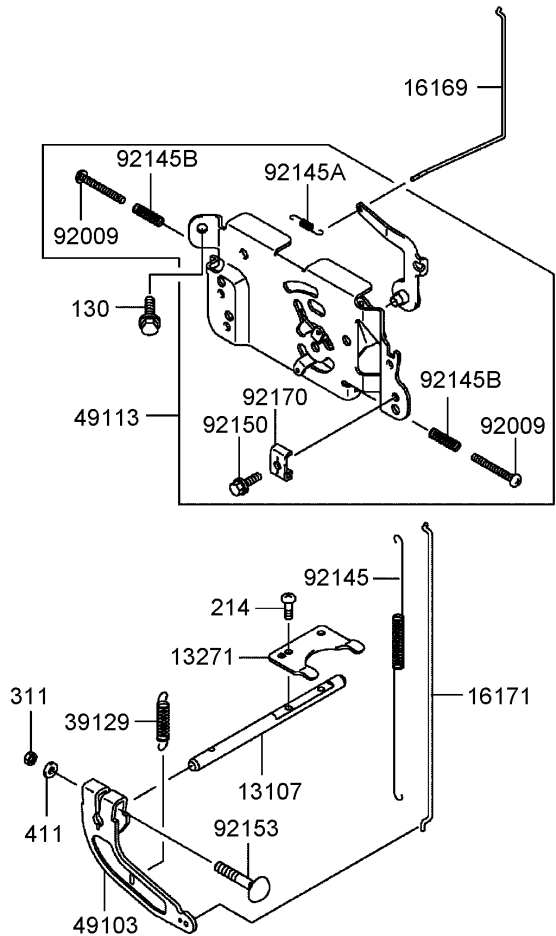
Lubrication Equipment Assembly Kawasaki FH541V-AS30

Ref	Part No.	Qty.	Description
①	13107-7009	1	Shaft
①	13271-7017	1	Plate
①	14075-7009	1	Cap ASM
①	16154-2053	1	Rotor-Pump (In)
①	16154A-2054	1	Rotor-Pump (Out)
①	49065-2078	1	Filter-Oil
①	49065A-7004	1	Filter-Oil
①	59051-7011	1	Gear-Spur
①	59231-7005	1	Filler
①	92043-7003	2	Pin
①	92066-7003	2	Plug
①	92140-7003	1	Ball
①	92145-7002	1	Spring
①	130B0612	3	Bolt-Flanged
①	670D2016	3	O-Ring (16mm)



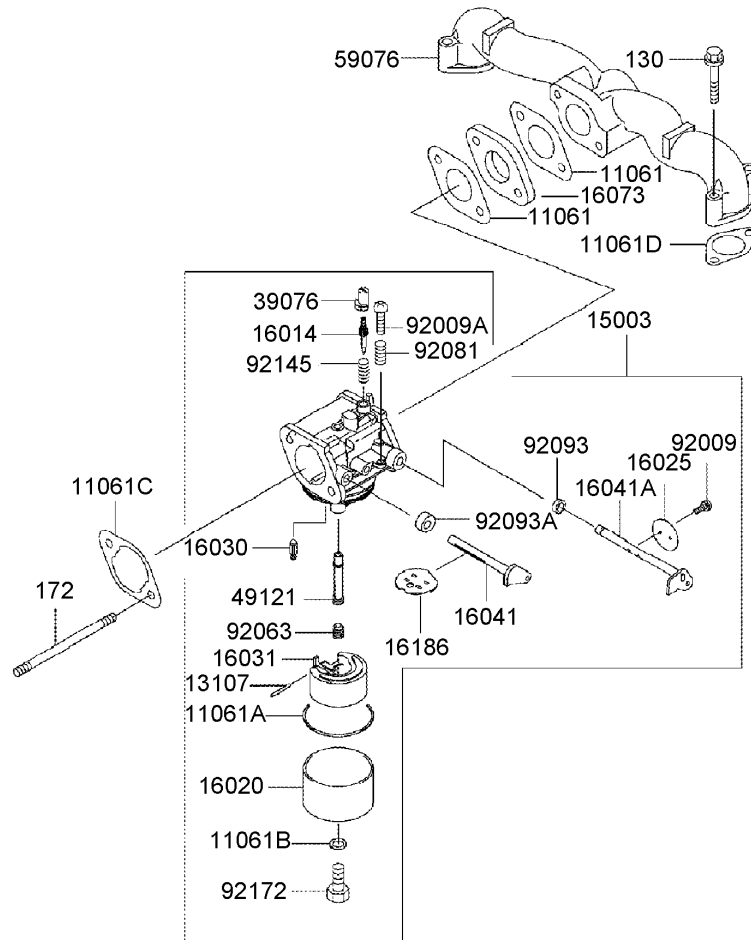
Electric Equipment Assembly Kawasaki FH541V-AS30

Ref	Part No.	Qty.	Description
③21171	21171-7013	2	Ignition Coil ASM
③21194	21194-7007	1	Flywheel-Comp
③26030	26030-7001	1	Harness
③59031	59031-7002	1	Coil-Charging
③92004	92004-7009	2	Stud
③92066	92066-7002	1	Plug
③92070	92070-7003	2	Plug-Spark (Rcj8y, Solid)
③92072	92072-7003	2	Band
③92151	92151-2097	1	Bolt (12x30)
③92200	92200-7002	1	Washer
③130	130B0620	2	Bolt-Flanged
③224	224B0520	4	Screw-Pan
③311	311B0600	2	Nut-Hex
③510	510A5100	1	Key-Woodruff



Control Equipment Assembly Kawasaki FH541V-AS30

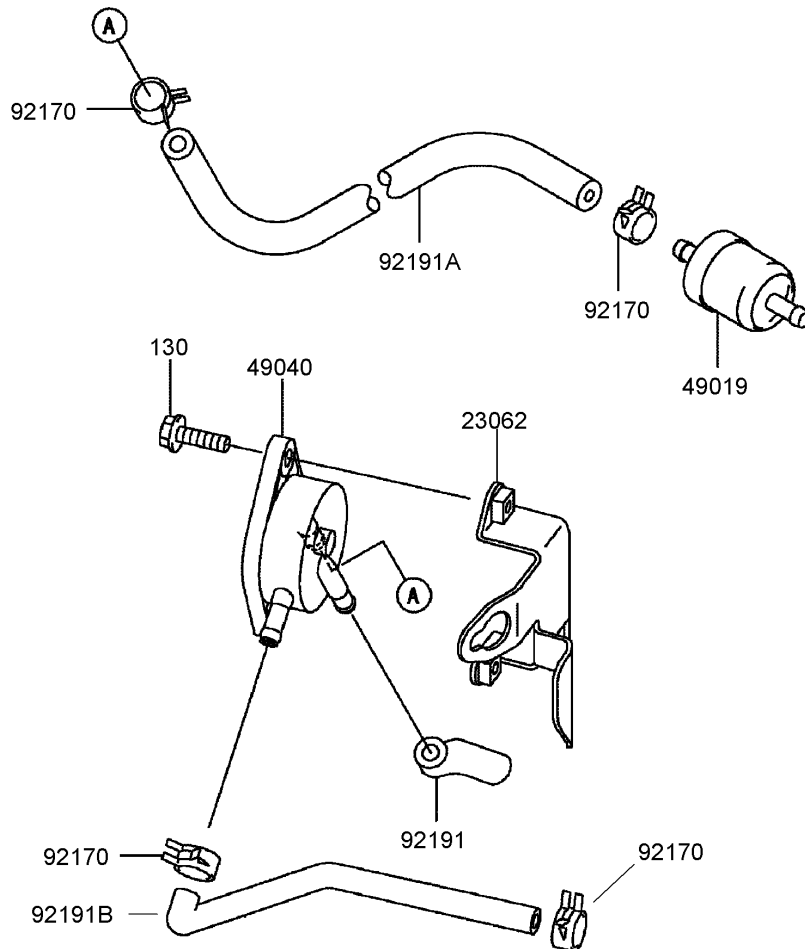
Ref	Part No.	Qty.	Description				
③13107	13107-7010	1	Shaft				
③13271	13271-7018	1	Plate				
③16169	16169-7010	1	Link-Choke				
③16171	16171-7001	1	Link				
③39129	39129-7003	1	Spring-Governor				
③49103	49103-7004	1	Arm-Governor				
③49113	49113-7027	1	Panel-Control, Comp				
③92009	92009-7007	2	Screw (4x35)				
③92145	92145-7003	1	Spring				
③92145A	92145-7004	1	Spring				
③92145B	92145-7005	2	Spring				
③92150	92150-2182	1	Bolt (5x18)				
③92153	92153-7005	1	Bolt,6x35				
③92170	92170-7001	1	Clamp				
③130	130B0612	2	Bolt-Flanged				
③214	214B0408	2	Screw-Pan				
③311	311B0600	1	Nut-Hex				
③411	411b0600	1	Washer-Plain				



Carburetor Assembly Kawasaki FH541V-AS30

Ref	Part No.	Qty.	Description
①11061	11061-7004	2	Gasket-Insulator
①11061A	11061-7009	1	Gasket-Chamber
①11061B	11061-7010	1	Gasket-Screw
①11061C	11061-7018	1	Gasket-Cleaner, Air
①11061D	11061-7019	2	Gasket
①13107	13107-7018	1	Shaft
①15003	15003-7107	1	Carburetor ASM
①16014	16014-7007	1	Screw-Air, Pilot
①16020	16020-7003	1	Chamber-Float
①16025	16025-7006	1	Valve-Throttle
①16030	16030-7003	1	Valve-Float
①16031	16031-7002	1	Float
①16041	16041-7016	1	Shaft-Carburetor, Choke
①16041A	16041-7018	1	Shaft-Carburetor, Throttle
①16073	16073-7007	1	Insulator
①16186	16186-7004	1	Choke Valve ASM
①39076	39076-7001	1	Limiter
①49121	49121-7010	1	Nozzle-Main
①59076	59076-7001	1	Manifold-Intake
①92009	92009-2083	2	Screw
①92009A	92009-2349	1	Screw
①92063	92063-7065	1	Jet-Main, #112
①92081	92081-2234	1	Spring
①92093	92093-2100	1	Seal

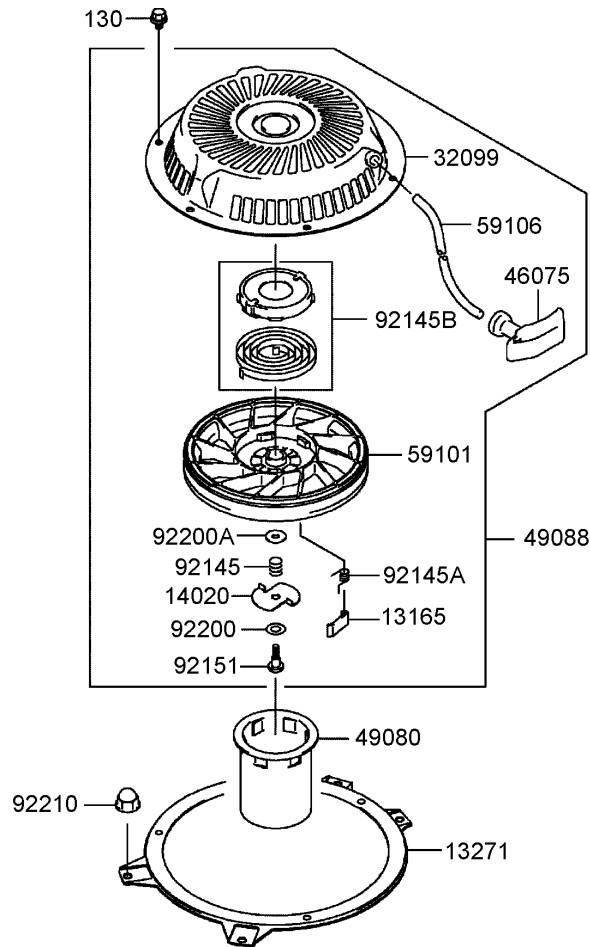
Ref	Part No.	Qty.	Description
①92093A	92093-7003	1	Seal
①92145	92145-7015	1	Spring
①92172	92172-7002	1	Screw
①130	130B0635	4	Bolt-Flanged
①172	172G0690	2	Bolt-Stud



Fuel Tank/Fuel Valve Assembly Kawasaki FH541V-AS30

Ref	Part No.	Qty.	Description
③ 23062	23062-7004-9H	1	Bracket-Comp
③ 49019	49019-7001	1	Filter-Fuel
③ 49040	49040-7001	1	Pump-Fuel
③ 92170	92170-2088	4	Clamp
③ 92191	92191-7002	1	Tube
③ 92191A	92191-7003	1	Tube (6.35x12.7x160)
③ 92191B	92191-7004	1	Tube
③ 130	130B0620	2	Bolt-Flanged

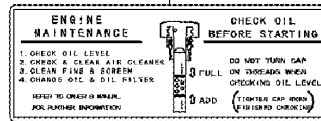
--	--	--	--



Starter Assembly Kawasaki FH541V-AS30

Ref	Part No.	Qty.	Description				
13165	13165-7001	2	Pawl-Starter, Recoil				
13271	13271-7003-9H	1	Plate				
14020	14020-7001	1	Retainer				
32099	32099-7002	1	Case-Starter, Recoil				
46075	46075-7001	1	Grip-Recoil, Starter				
49080	49080-7001	1	Pulley-Starting				
49088	49088-7013	1	Starter-Recoil				
59101	59101-7001	1	Reel-Recoil				
59106	59106-7001	1	Rope				
92145	92145-7006	1	Spring				
92145A	92145-7007	2	Spring				
92145B	92145-7008	1	Spring				
92151	92151-7008	1	Bolt				
92200	92200-7004	1	Washer				
92200A	92200-7005	1	Washer				
92210	92210-0003	4	Nut				
130	130B0608	3	Bolt-Flanged				

56033



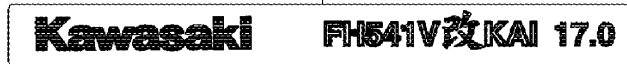
56070



56080



56080A



**Decal Assembly
 Kawasaki FH541V-AS30**

Ref	Part No.	Qty.	Description
⑤56033	56033-7002	1	Label-Manual
⑤56070	56070-7001	1	Label-Warning
⑤56080	56080-2077	1	Label-Brand
⑤56080A	56080-7023	1	Label-Brand

Attachments and Accessories

For 30327 - Mid-Size ProLine T-Bar Gear, 17 HP with 44in Side Discharge Mower

Product Name	Model/Part
Blade-Atomic	104-1300
Striping Kit	106-3370
Soft Bag (3 Bushel)	30104
Steel Grass Catcher	30107
Tru Trak Sulky	30110
Blade-Lift, High	55-4940-03
Recycler Kit	59220
Recycler Kit (MS / ZRT)	59226
Blade-Recycler	92-7952-03

NOTES

NOTES

