



## Combination Deck, Versa Vac

Model No. 07082 - 250000001 and up.

### Parts Catalog

---

#### Ordering Replacement Parts

To order replacement parts, please supply the part number, the quantity, and the description of each part desired.

#### Understanding Reference Numbers

Each Identified part in an illustration has a reference number. The reference number for a part also appears in the parts list, along with other information about the part.

This catalog uses two special reference number formats, one to indicate parts in a service assembly and another to indicate the quantity of a given part in an illustration.

#### Service Assembly Reference Numbers

Parts in service assemblies have reference numbers in the form a:b. The a represents the reference number of the entire service assembly and the b represents a sequential number unique to each part within the service assembly.

For example, a wheel assembly might be identified by reference number 6, the tire by 6:1, the valve by 6:2, and the wheel by 6:3. When you order the assembly identified by reference number 6, you receive all parts identified by reference numbers 6:1, 6:2, and 6:3. However, you may also order any part individually. Reference numbers of this type appear in illustrations and in part lists.

#### Reference Numbers Indicating Quantity

In an illustration, if a reference number indicates more than one part, the reference number has the form nX y. The n represents the quantity of the part, the X is the multiplication symbol, and the y represents the reference number.

For example, in an illustration, the reference number 2X 37 means that two of the parts identified by reference number 37 are indicated.

# Contents

Description	Page	Description	Page
Rotor and Skirt Assembly	..... 3	Castor Wheel Assembly	..... 6
Drive Assembly	..... 4		

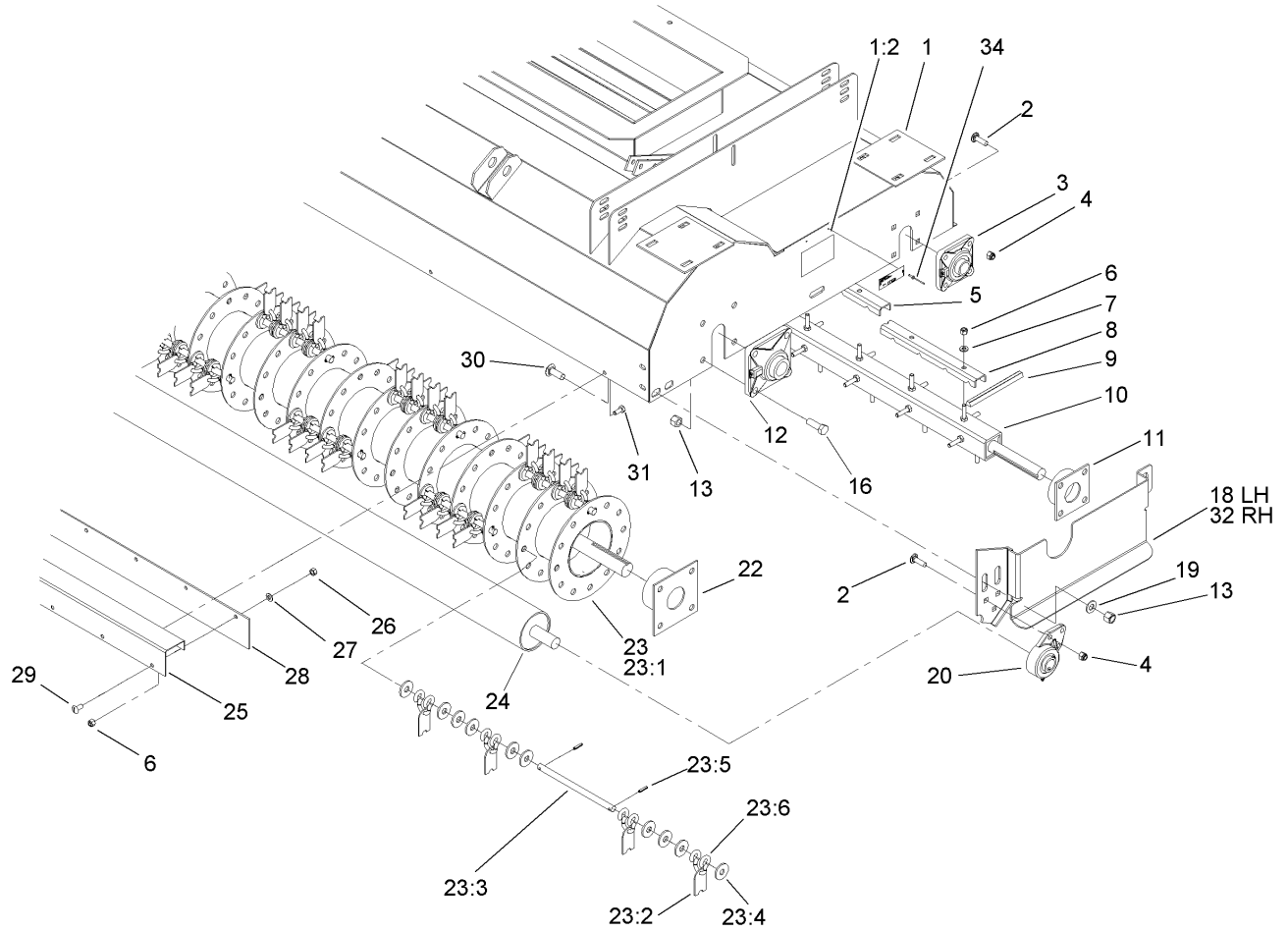
## Part Description Abbreviations

Part descriptions in this catalog may include the following abbreviations.

AR. .... as required	INC. .... incorporated
ASM. .... assembly	LH. .... left hand
CARR. .... carriage	NI. .... nylon insert
DEG. .... degrees	PPH. .... phillips pan head
FH. .... flat head	PTH. .... phillips truss head
GA. .... gauge	PTO. .... power take off
HF. .... hex flange	RH. .... right hand
HH. .... hex head	SFH. .... slotted fillister head
HHF. .... hex head flange	SHH. .... slotted hex head
HHFTF. .... hex head flange thread forming	SHWH. .... slotted hex washer head
HJ. .... hex jam	SPH. .... slotted pan head
HLH. .... hex lag head	SQH. .... square head
HOC. .... height-of-cut	SRH. .... slotted round head
HS. .... hex	STD. .... standard
HSBH. .... hex socket button head	TAP. .... self tapping
HSFH. .... hex socket flat head	TTH. .... torx truss head
HSH. .... hex socket head	WH. .... wing head
HWH. .... hex washer head	
HWHTF. .... hex washer head thread forming	
HYD. .... hydraulic	

## Footnotes

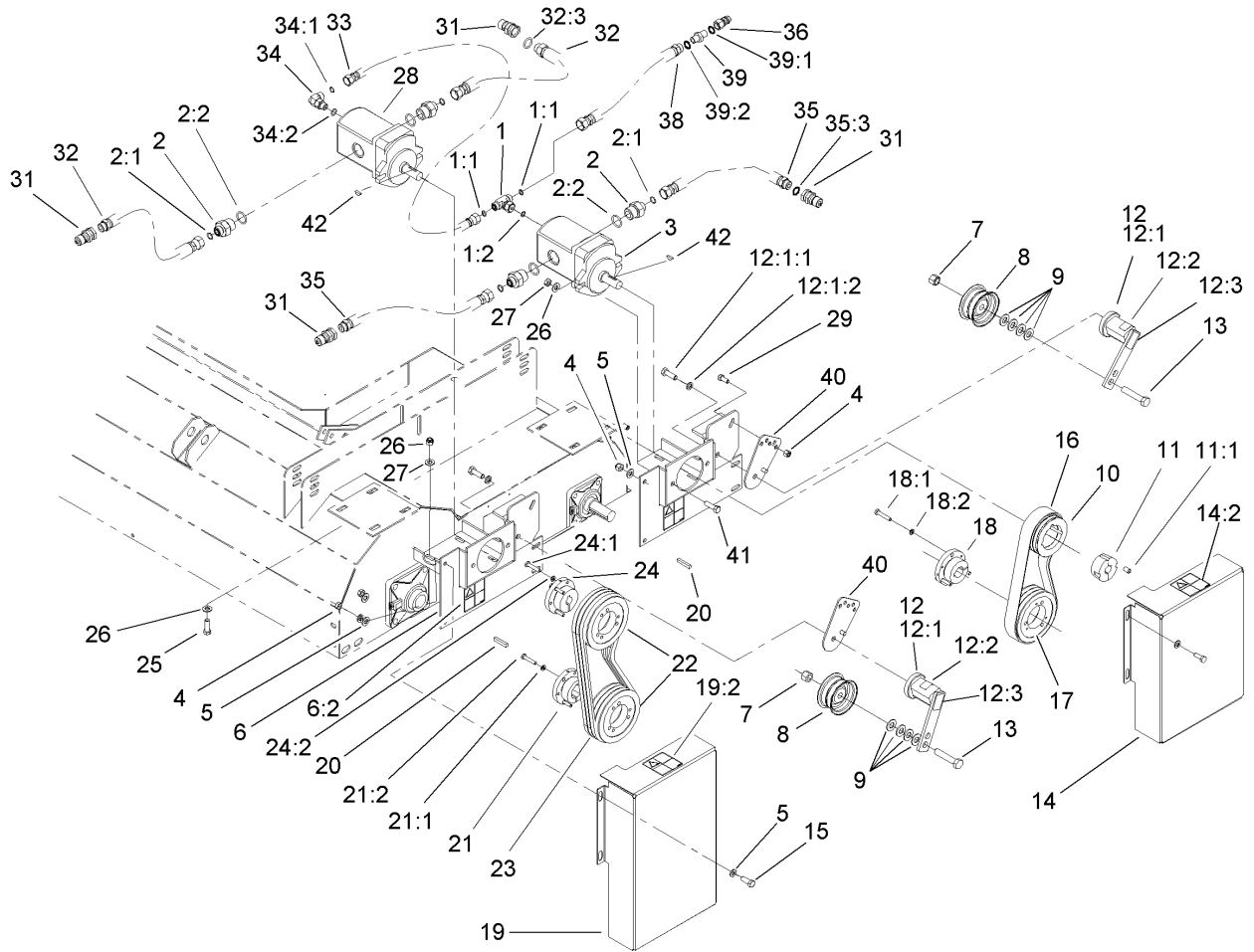
- ❶ Not serviced separately



## Rotor and Skirt Assembly

Ref	Part No.	Qty.	Description
1	105-8452	1	Deck-Rake And Finger
1:2	106-0188	2	Decal-Caution
2	3231-28	14	Screw-CARR
3	BD733-00	2	Bearing-Flange
4	3296-39	14	Nut-Lock, NI
5	SV165-00-03	8	Pincher-Belt, Middle
6	3296-29	48	Nut-Lock, NI
7	3256-23	44	Washer-Flat
8	SV159-00-03	8	Pincher-Belt, End
9	SV166-00	88	Finger-Belt
10	SV161-00-03	1	Rotor-Finger, Rubber
11	RS205-00-01	2	Guard-Bearing, Shaft
12	RS250-00	2	Bearing-Flange
13	3296-23	12	Nut-Lock, NI
16	325-6	8	Screw-HH
18	106-0124-01	1	LH Guard ASM
19	3256-6	4	Washer-Flat
20	106-0326	2	Bearing-Flange
22	RS206-00-01	2	Guard-Bearing, Rotor Shaf
23	106-0224	1	Rotor-Flail, Vert. Cut
23:1	106-0324-03	1	Rotor-Flail
23:2	106-0221	72	Knife-Flail
23:3	106-0213	18	Pin-Flail Mount
23:4	63-3340	180	Washer-Support

Ref	Part No.	Qty.	Description
23:5	32121-4	36	Pin-Roll, Slotted
23:6	92-4286	72	Hanger-Flail Pivot
24	RS322-00-01	1	Roller-Anti-Scalp
25	RS224-00-01	1	Shield-Front
26	3296-29	12	Nut-Lock, NI
27	3256-23	12	Washer-Flat
28	RS224-01	1	Skirt-Shield, Front
29	105-8460	12	Screw-Sth
30	3233-26	4	Screw-CARR
31	322-3	4	Screw-HH
32	106-0125-01	1	RH Guard ASM
34	923786	2	Rivet-Pop

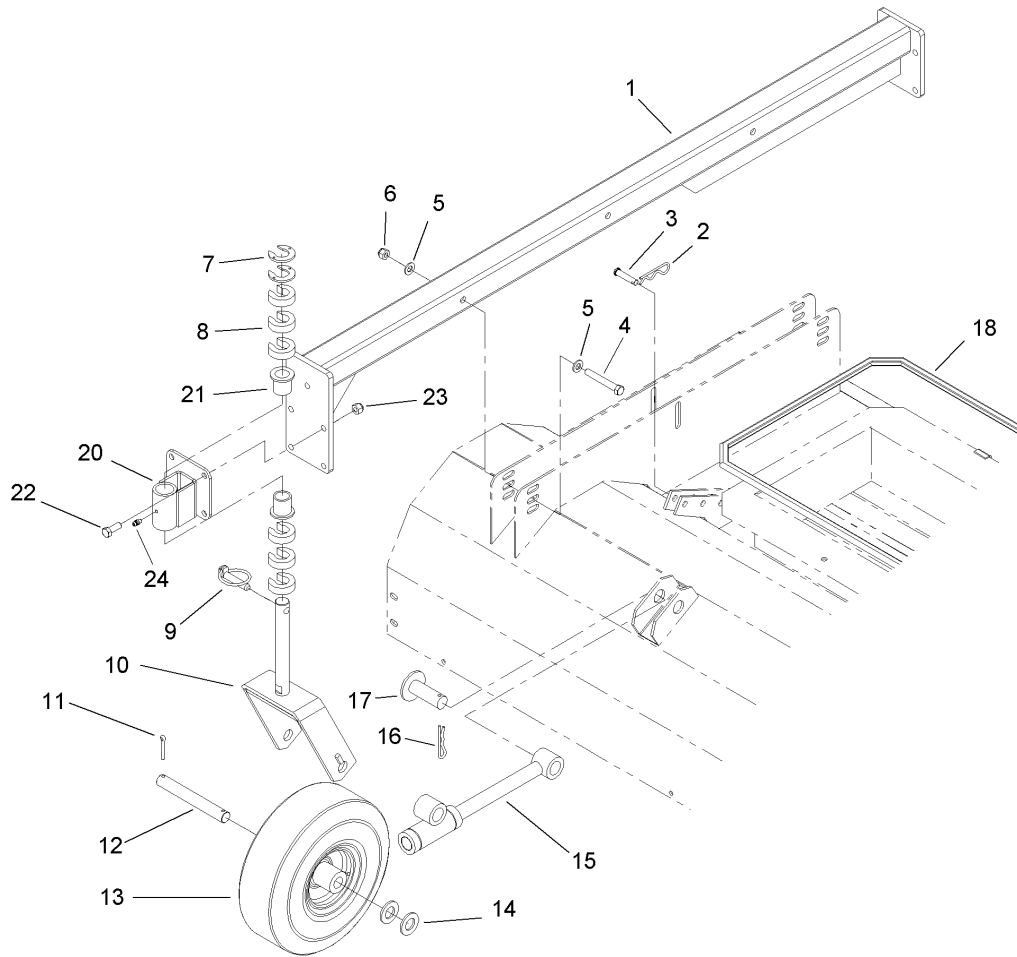


## Drive Assembly

Ref	Part No.	Qty.	Description
1	340-94	1	Adapter
1:1	237-22	2	O-Ring
1:2	237-42	1	O-Ring
2	100-4240	4	Fitting-Adapter
2:1	237-30	1	O-Ring
2:2	237-81	1	O-Ring
3	SVA18400	1	Motor-HYD
4	3296-29	10	Nut-Lock, NI
5	3256-23	16	Washer-Flat
6	106-0181	2	Mount-Motor
6:2	105-4586	1	Decal-Shield
7	3296-23	2	Nut-Lock, NI
8	GF251-00	2	Pulley-Idler
9	3256-26	8	Washer-Flat
10	GB504-00	1	Pulley-Lock, Taper
11	SVA19300	1	Bushing-Taper Lock
11:1	3247-4	2	Screw-Set
12	106-0179	2	Tensioner Idler ASM
12:1		1	Tensioner-Idler
12:1:1	33115-030	1	Screw-HH
12:1:2	48-9590	1	Washer-Lock
12:2	106-0177	1	Decal-Angle
12:3	106-0178	1	Decal-Align
13	325-10	2	Screw-HH

Ref	Part No.	Qty.	Description
14	105-7855	1	Motor Shield ASM
14:2	105-4586	1	Decal-Shield
15	322-4	8	Screw-HH
16	SVA19100	1	Belt
17	105-7854	1	Pulley
18	105-7856	1	Hub
18:1	321-9	3	Screw-HH
18:2	3253-3	3	Washer-Lock
19	105-8453	1	Motor Shield ASM
19:2	105-4586	1	Decal-Shield
20	67-7490	2	Key-Square
21	105-8458	1	Bushing-Grip, Full
21:1	32104-96	3	Screw-HH
21:2	3253-3	3	Washer-Lock
22	105-8457	2	Pulley
23	SVB17500	3	V-Belt
24	105-8461	1	Bushing-Lock, Taper
24:1	32104-96	3	Screw-HH
24:2	3253-3	3	Washer-Lock
25	323-6	8	Screw-HH
26	3256-24	20	Washer-Flat
27	3296-39	12	Nut-Lock, NI
28	SVA18300	1	Motor-HYD
29	3230-1	2	Bolt-CARR





## Castor Wheel Assembly

Ref	Part No.	Qty.	Description
1	105-4940-01	2	Mount-Caster
2	3290-355	2	Pin-Hair
3	283-15	2	Pin-Clevis
4	323-14	6	Screw-HH
5	3256-24	12	Washer-Flat
6	3296-39	6	Nut-Lock, NI
7	SV170-00	8	Spacer-Slotted, Thin
8	SV126-01	24	Spacer-Slotted
9	283-71	4	Pin-Lynch
10	SV125-00-01	4	Yoke-Caster, Wheel
11	3272-22	8	Pin-Cotter
12	RS211-00	4	Axle-Wheel, Caster
13	RS210-00	4	Wheel-Tire
14	3256-28	16	Washer-Flat
15	SV117-00-01	2	Rod-Radius, Short
16	9335064	2	Pin-Cotter, Hair
17	RS218-00	2	Pin-Clevis
18	105-4843	1	Trim
20	BL116-00-01	4	Mount-Wheel
21	RS202-09	8	Bushing-Flange
22	323-6	16	Screw-HH
23	3296-39	16	Nut-Lock, NI
24	302-5	4	Fitting-Grease


## NOTES

