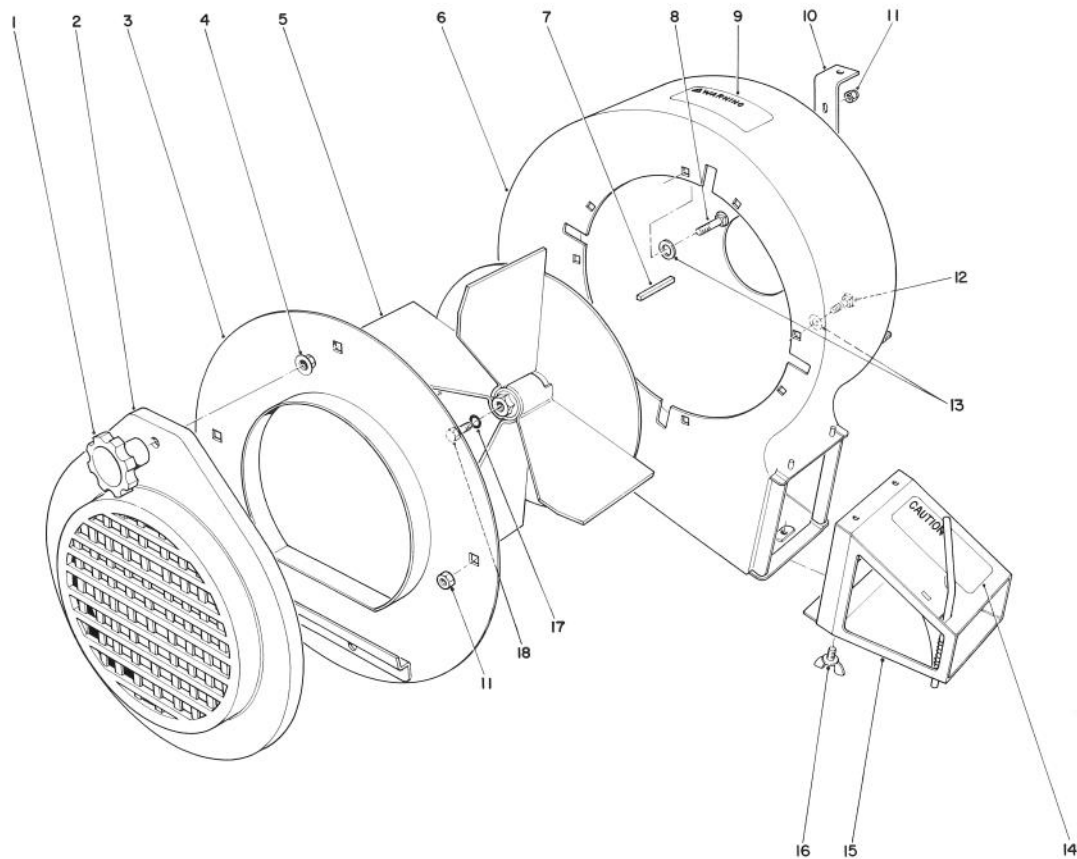
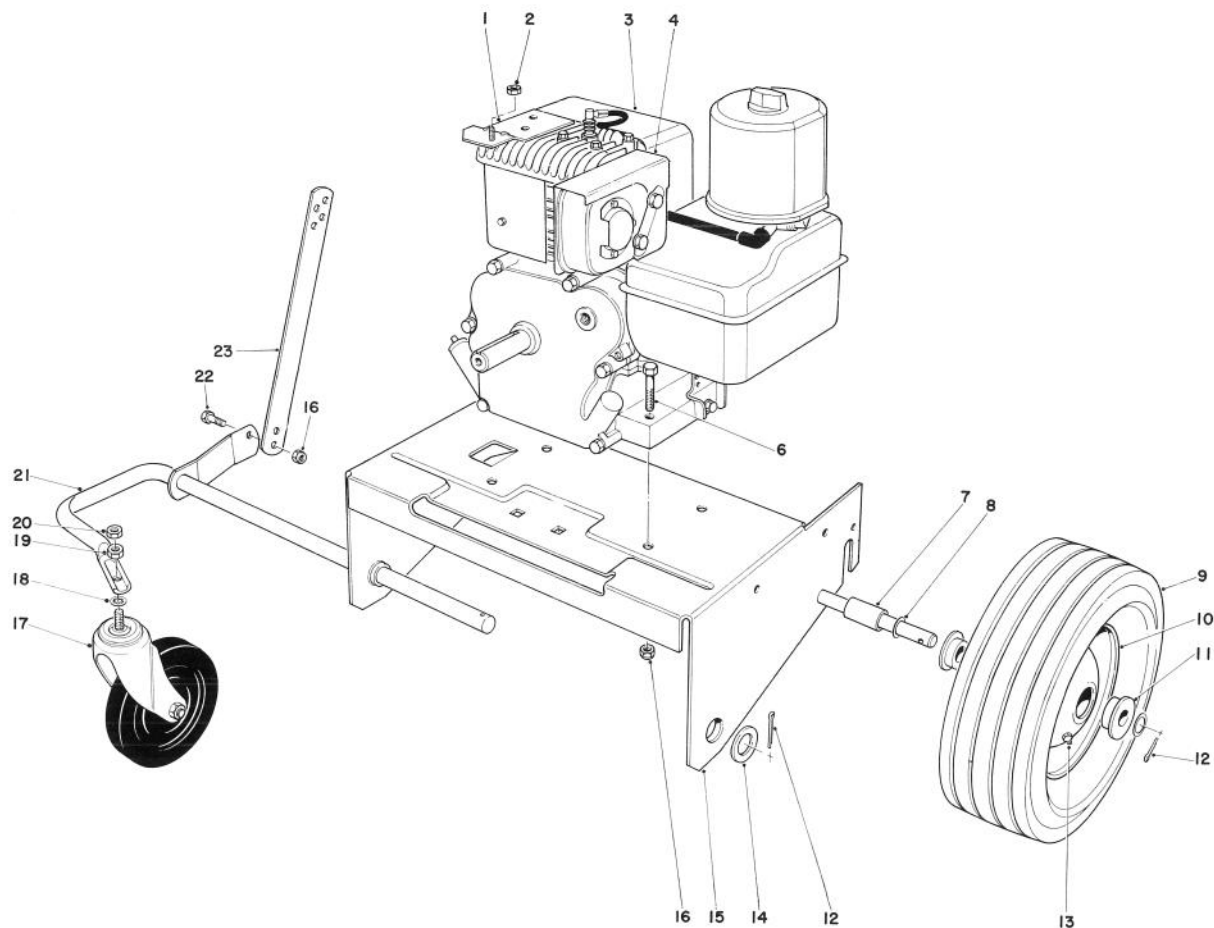


TORO®MODEL NO. 62933 — 7000001
THRU 8000001 & UP**PARTS
CATALOG****5 H.P. BLOWER****BLOWER ASSEMBLY**

Ref. No.	Part No.	Description	No. Used
1	19-4050	Knob, Handle Release	1
2	20-5780	Blower Intake	1
3	20-5450	Blower Cover	1
4	32128-26	Flange Nut	1
5	37-9230	Fan	1
6	20-5890	Blower Housing	1
7	7-0036	Key	1
8	57-3220	Carriage Bolt	1
9	37-9260	Decal — Warning	1
10	39-4660	Mounting Bracket	1

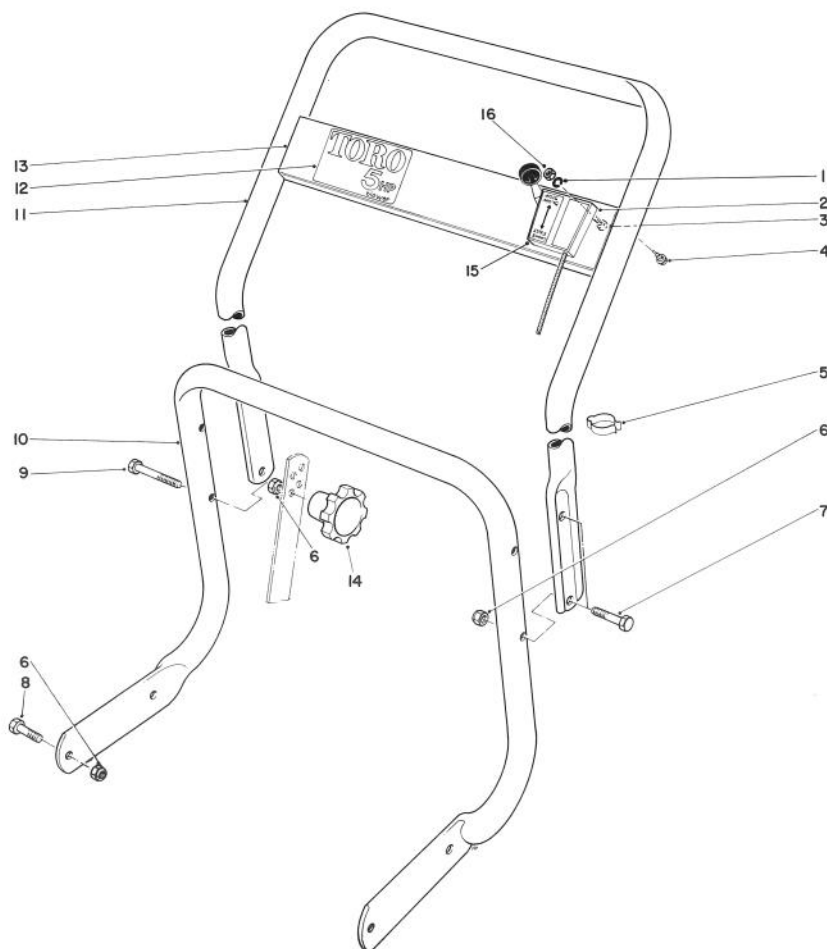
Ref. No.	Part No.	Description	No. Used
11	32152-1	Locknut	5
12	3230-19	Carriage Bolt	3
13	3256-25	Flat Washer	3
14	20-7900	Decal — Exhaust	1
15	20-6570	Blower, Exhaust (Incl. Ref. #14)	1
16	3288-6	Screw Wing	1
17	3253-4	Lockwasher	1
18	40-6990	Screw — Special	1



ENGINE AND BASE ASSEMBLY

Ref. No.	Part No.	Description	No. Used
1	39-4680	Mounting Bracket	1
2	3296-47	Locknut	1
3		Engine	1
4	39-4690	Heat Shield — Muffler	1
6	322-7	Capscrew	4
7	20-5410	Axle Spacer	2
8	7-3590	Washer, Special	4
9	234-22	Tire	2
10	20-3350	Wheel & Tire Assembly (Incl. Ref. #9, 11 & 13)	2
11	256-241	Bushing	4
12	3272-17	Cotter Pin	3

Ref. No.	Part No.	Description	No. Used
13	302-5	Grease Fitting	2
14	3256-29	Plain Washer	1
15	20-5570	Engine Plate	1
16	32152-1	Locknut	5
17	23-3320	Caster Wheel	1
18	3254-4	Lockwasher	1
19	3217-9	Nut	1
20	32152-3	Locknut	1
21	23-3370	Front Wheel Support	1
22	322-3	Capscrew	1
23	37-9460	Bar Height Adjustment	1

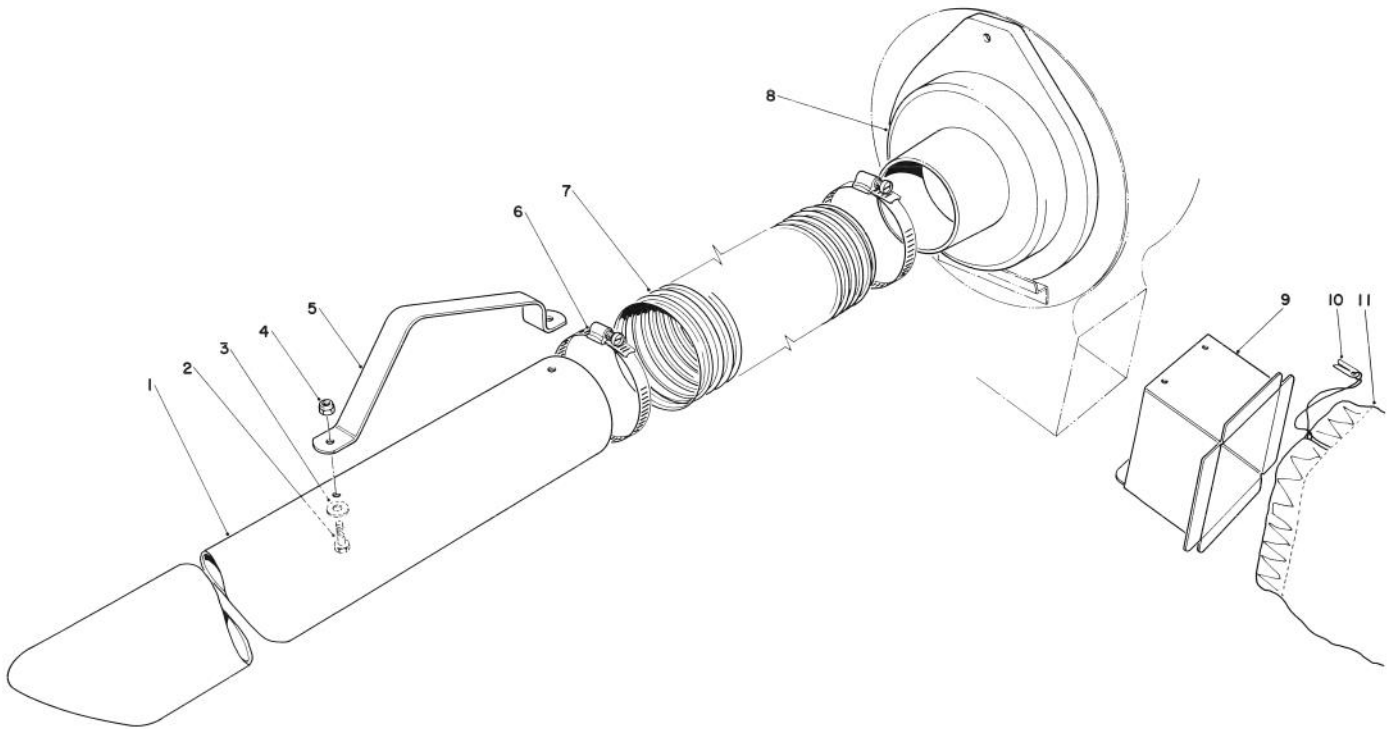


HANDLE ASSEMBLY

Ref. No.	Part No.	Description	No. Used
1	3253-15	Washer — Lock	2
2	23-3390	Throttle Control (Incl. Ref.#15)	1
3	3250-1	Screw	2
4	32104-76	Self Tapping Screw	4
5	2412-47	Clip	1
6	32152-1	Locknut	8
7	322-9	Capscrew	3
8	322-3	Capscrew	4
9	322-10	Capscrew	1

Ref. No.	Part No.	Description	No. Used
10	20-5810	Lower Handle	1
11	37-9240	Handle	1
12	20-7230	Decal — Escutcheon Plate	1
13	20-5770	Escutcheon Plate	1
14	19-4050	Knob	1
15	2213-6	Cover — Throttle Control	1
16	3217-25	Nut	2
*	12-1149	Loose Parts	1

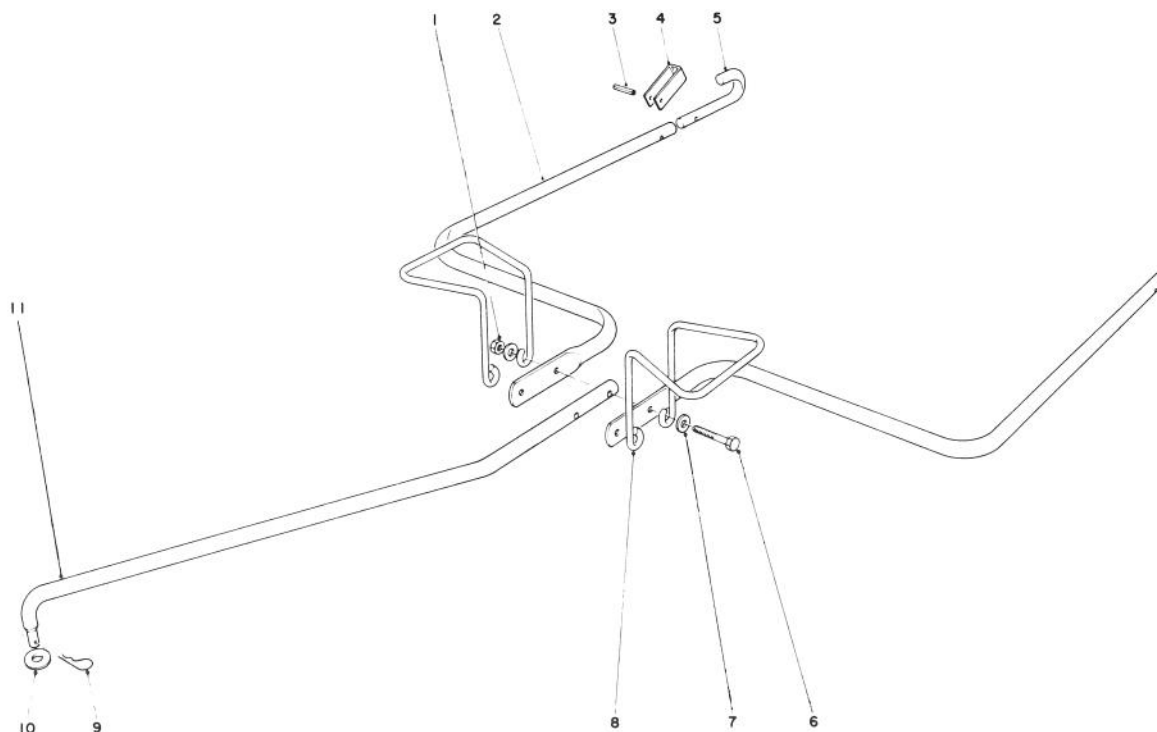
*Not Illustrated



BLOWER BAGGING KIT MODEL NO. 59084 (Optional)

Ref. No.	Part No.	Description	No. Used
1	20-5750	Nozzle	1
2	321-3	Capscrew	2
3	20-5690	Special Washer	2
4	32149-2	Locknut	2
5	20-6200	Handle	1
6	2412-46	Hose Clamp	2

Ref. No.	Part No.	Description	No. Used
7	20-6650	Hose — Vacuum	1
8	20-5740	Adaptor	1
9	20-7300	Housing	1
10	3-2781	Bag Cord Fastener	1
11	8-4719	Bag	1

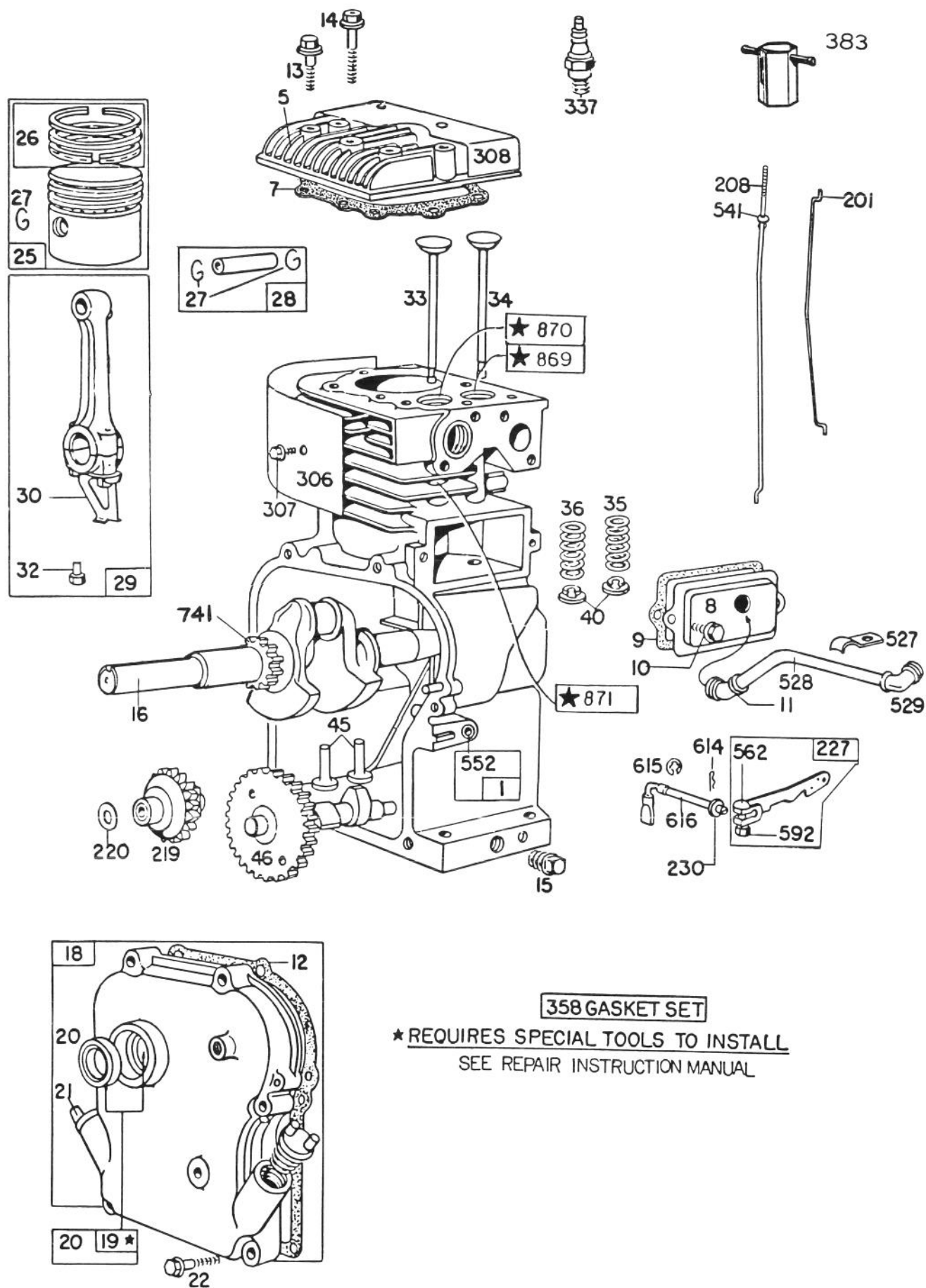


HITCH KIT MODEL NO. 59087 (Optional)

Ref. No.	Part No.	Description	No. Used
1	32152-4	Lock Nut	2
2	20-8010	Hitch Arm	2
3	32121-18	Pin Slotted Roll	2
4	20-8030	Hitch Lock	2
5	20-8850	Hook Hitch Arm	2
6	321-15	Capscrew	2

Ref. No.	Part No.	Description	No. Used
7	3256-2	Flat Washer	4
8	23-5190	Support Bag	2
9	3290-250	Hair Pin Cotter	1
10	3290-377	Push Nut	1
11	23-5360	Hitch Pole	1

ENGINE BRIGGS & STRATTON MODEL NO. 130202-1640-01



358 GASKET SET

★ REQUIRES SPECIAL TOOLS TO INSTALL
SEE REPAIR INSTRUCTION MANUAL

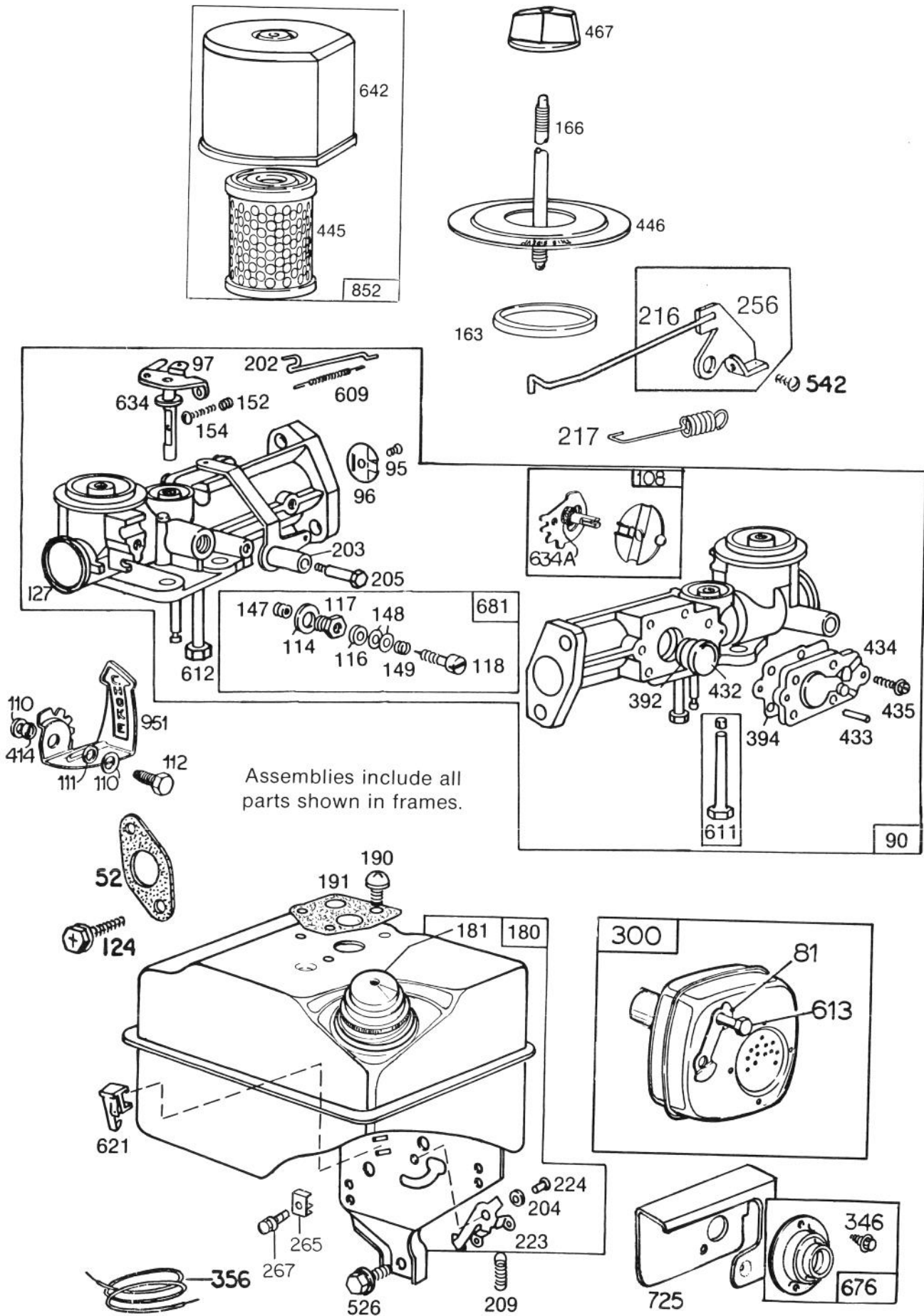
ENGINE BRIGGS & STRATTON MODEL NO. 130202-1640-01

Ref. No.	Part No.	Description	No. Used
1	395990	Cylinder Assembly	1
5	211542	Head — Cylinder	1
7	*270383	Gasket — Cylinder Head	1
8	294178	Breather — Valve Chamber	1
9	*27549	Gasket — Valve Cover	1
10	93394	Screw — Breather Mtg.	1
11	66578	Grommet — Breather Tube	1
12	*270080	Gasket — Crankcase — .015" thick (Std.)	1
	*270125	Gasket — Crankcase — .005" thick	1
	*270126	Gasket — Crankcase — .009" thick	1
13	93368	Screw — Cylinder Head (2-3/32" long) Note: 391608 Bracket — Mtg. Furnished by equipment manufacturer	1
14	93369	Screw — Cylinder Head (2-15/32" long)	1
15	91249	Plug — Pipe, 1/4" Std., Square Head	1
16	397085	Crankshaft Note: To Replace Crankshaft Gear Pin, Order Part No. 230978 Used Only With Crankshaft With Loose Gear.	1
18	297602	Cover Assy. — Crankcase	1
19	297603	Bushing — Crankcase Cover Note: Requires special tools for installation.	1
20	294606	Seal — Oil	1
21	66768	Plug — Oil Filler	1
22	93032	Screw — Crankcase Cover Mounting	1
25	298904	Piston Assy. — Standard	1
	298905	Piston Assy. — .010" O.S.	1
	298906	Piston Assy. — .020" O.S.	1
	298907	Piston Assy. — .030" O.S.	1
		PISTON RING SETS: Note: For Chrome Piston Ring Set — Standard Size — Order Part No. 299742.	
26	298982	Ring Set — Standard Piston	1
	298983	Ring Set — .010" O.S. Piston	1
	298984	Ring Set — .020" O.S. Piston	1
	298985	Ring Set — .030" O.S. Piston	1

Ref. No.	Part No.	Description	No. Used
27	26026	Lock — Piston Pin	1
28	298909	Pin Assy. — Piston — Standard	1
	298908	Pin Assy. — Piston — .005" O.S.	1
29	299430	Rod Assy. — Connecting Note: For Connecting Rod with .020" undersize Crankpin Bore — Order No. 390459.	1
30	221890	Dipper — Connecting Rod	1
32	92296	Screw — Connecting Rod	1
33	211119	Valve Exhaust	1
34	261044	Valve — Intake	1
35	260552	Spring — Intake Valve	1
36	26478	Spring — Exhaust Valve	1
40	93312	Retainer — Valve Spring	1
45	260642	Tappet — Valve	1
46	211117	Gear — Cam	1
201	261558	Link — Governor	1
208	230946	Rod — Control	1
219	391737	Gear — Governor	1
220	221551	Washer — Thrust	1
227	393920	Lever Assy. — Governor	1
230	222450	Washer — Governor Lever (1/4" I.D.)	1
306	221511	Shield — Cylinder	1
307	93042	Screw — Cylinder Shield Mounting	1
308	221512	Cover — Cylinder Head	1
337	293918	Plug — Spark (1-1/2" Resistor Type)	1
358	397145	Gasket Set	1
383	89838	Wrench — Spark Plug	1
527	221514	Clamp — Breather Tube	1
528	231328	Tube — Breather	1
529	67838	Grommet — Breather Tube	1
541	22398	Washer	1
552	231079	Bushing — Governor	1
562	92613	Bolt — Governor Lever	1
592	231082	Nut — Hex.	1
614	93306	Cotter — Hair Pin	1
615	93307	Retainer — E-Ring	1
616	231077	Crank — Governor	1
741	261696	Gear — Timing	1
869	211787	Seat — Intake Valve (Std.)	1
870	211172	Seat — Exhaust Valve (Std.)	1
871	231348	Guide — Exhaust Valve Note: 63709 Guide-Intake Valve	1

*Included in Gasket Set — Part No. 397145.

ENGINE BRIGGS & STRATTON MODEL NO. 130202-1640-01 (Continued)

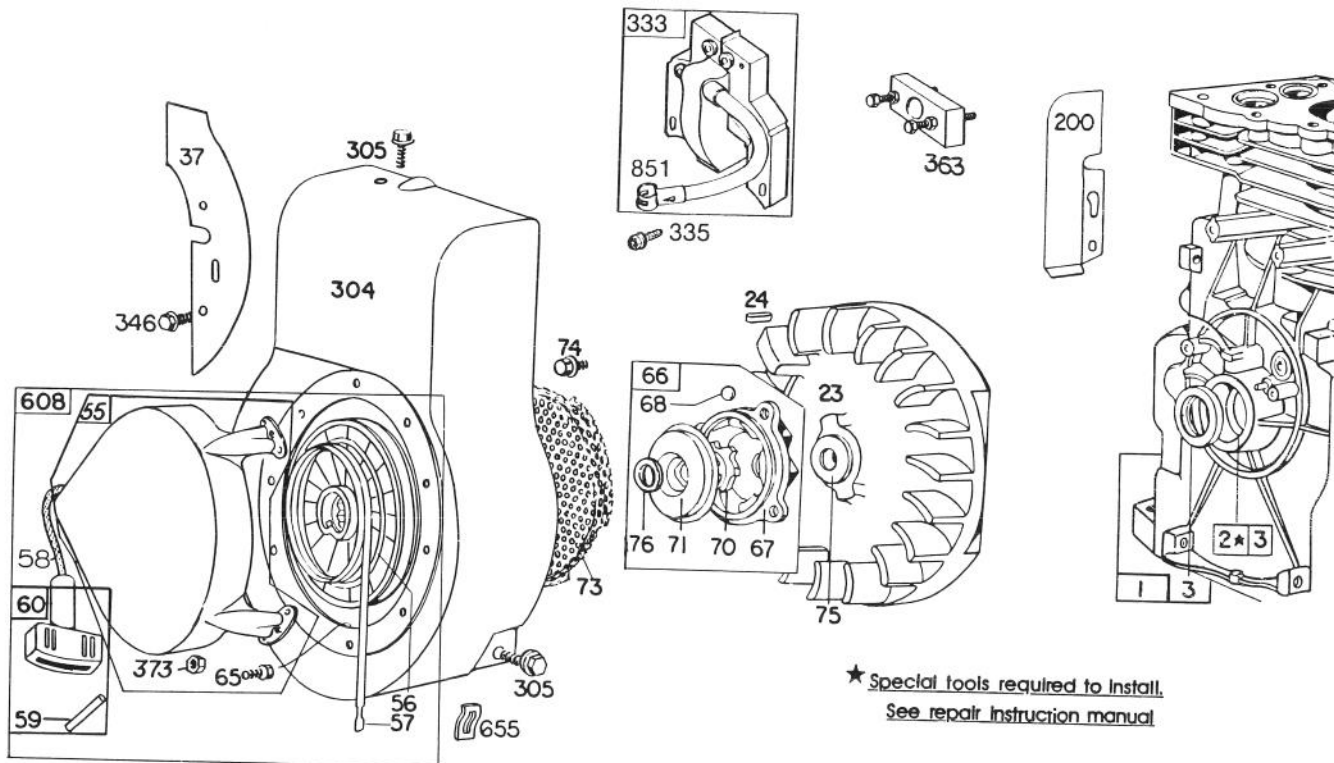


ENGINE BRIGGS & STRATTON MODEL NO. 130202-1640-01 (Continued)

Ref. No.	Part No.	Description	No. Used
52	*27355	Gasket - Carburetor Mounting	2
81	222263	Lock - Screw	1
90	397457	Carburetor Assembly	1
95	93499	Screw - Throttle Valve to Shaft	1
96	211203	Throttle - Carburetor	1
97	299212	Shaft and Lever - Throttle	1
108	397134	Valve Group - Choke	1
110	221226	Washer - Choke Lever	2
111	94060	Washer - Wave	1
112	93686	Screw - Choke Lever	1
114	66594	Gasket - Needle Valve Nut	1
116	65978	Packing - Needle Valve	1
117	230590	Nut - Needle Valve	1
118	23433	Valve - Needle	1
124	93357	Screw - Hex. Hd.	2
127	22831	Welch Plug	1
147	230591	Seat - Needle Valve	1
148	22235	Washer - Needle Valve	2
149	26336	Spring - Needle Valve	1
152	260575	Spring - Throttle Adjustment	1
154	93527	Screw - Machine, Rd. Hd.	1
163	271139	Gasket - Air Cleaner Mounting	1
166	231332	Stud - Air Cleaner	1
180	397137	Tank Assembly - Fuel	1
181	397567	Cap - Fuel tank	1
190	93440	Screw - Fuel Tank Mounting	1
191	*271592	Gasket - Fuel Tank Mounting	2
202	260678	Link - Throttle	1
203	393919	Crank - Bell	1
204	222962	Bushing - Governor Lever (Flat)	1
205	93838	Screw - Shoulder	1
209	260695	Spring - Governor	1
216	397709	Link - Choke	1
217	261951	Spring - Choke	1
223	221517	Lever - Governor Control	1

Ref. No.	Part No.	Description	No. Used
224	93491	Rivet - Governor Control Lever Mounting	1
256	397709	Crank - Bell	1
265	221535	Clamp - Casing	1
267	93496	Screw	1
300	393615	Muffler - Exhaust	1
346	93705	Screw	1
356	398808	Wire - Ground	1
392	260455	Spring - Fuel Pump Diaphragm	1
394	270026	Diaphragm	1
414	231325	Spacer - Choke Lever	1
432	221377	Cap - Spring	1
433	93265	Pin - Diaphragm Cover	1
434	210959	Cover - Diaphragm	1
435	93141	Screw - Diaphragm Cover	1
445	396424	Cartridge - Air Cleaner	1
446	222844	Base - Air Cleaner	1
467	212706	Knob - Air Cleaner	1
526	93343	Screw - Tank Bracket Mounting	1
542	94025	Screw	1
609	260694	Spring - Throttle Link	1
611	391813	Fuel Pipe and Clip Assembly	1
612	296811	Pipe - Fuel	1
613	93935	Screw - Hex. Hd. Shoulder	1
621	297472	Switch - Stop	1
634	270167	Washer - Throttle Shaft (Felt)	1
634A	270382	Washer - Choke Shaft	1
642	223306	Cover - Air Cleaner	1
676	395700	Deflector - Exhaust (Direct Outlet)	1
681	299060	Needle Valve Kit	1
725	222595	Shield - Heat	1
		Note: Furnished by the equipment manufacturer.	
852	396397	Cleaner Group - Air	1
951	223286	Lever - Choke	1

*Included in Gasket Set — Part No. 397145.



ENGINE BRIGGS & STRATTON MODEL NO. 130202-1640-01 (Continued)

Ref. No.	Part No.	Description	No. Used
1	395990	Cylinder Assembly	1
2	297565	Bushing - Cylinder	1
		Note: Requires special tools for installation.	
3	299819	Seal - Oil	1
23	297229	Flywheel - Magneto	1
24	222698	Key - Flywheel	1
37	222443	Guard - Flywheel	1
55	299431	Housing - Rewind Starter	1
56	295871	Pulley - Rewind Starter (Includes 63" long rope)	1
57	294303	Spring - Rewind Starter	1
58	66884	Rope - Rewind Starter — 63" long	1
59	230228	Pin - Starter Grip	1
60	393152	Grip - Starter Rope	1
65	93067	Screw - Stamped Steel Housing Mtg.	1
66	394558	Clutch Assy. - Rewind Starter	1
67	394897	Housing - Starter Clutch	1

Ref. No.	Part No.	Description	No. Used
68	63770	Ball - Clutch	1
70	298436	Ratchet - Rewind Starter	1
71	221653	Washer - Clutch Retainer	1
73	221923	Screen - Starter Pulley	1
74	93490	Screw	1
75	220865	Washer - Spring	1
76	68238	Washer - Ratchet Sealing	1
200	221480	Guide - Air	1
304	299410	Housing - Blower	1
305	93158	Screw - Blower Housing Mtg.	1
333	397358	Armature - Magneto	1
335	93414	Screw - Armature Mtg.	1
346	93705	Screw	1
363	19069	Flywheel Puller (Optional Accessory)	1
373	92987	Nut - Hex.	1
608	390463	Starter Assy. - Rewind	1
655	222598	Anchor - Spring	1
851	221798	Cable Terminal - Ignition	1

The Toro Promise

A TWO YEAR LIMITED WARRANTY

The Toro Company promises to repair any TORO Product if defective in materials or workmanship. The following time periods from the date of purchase apply:

Residential Product 2 Years
Residential Products Used Commercially . . . 45 Days

The costs of parts and labor are included, but the customer pays the transportation costs. Just return any residential product to an Authorized TORO Service Dealer or TORO Distributor.

Should you feel your TORO Product is defective and wish to rely on The Toro Promise, the following procedure is recommended:

1. Contact any Authorized TORO Service Dealer, TORO Master Service Dealer, or TORO Distributor (the Yellow Pages of your telephone directory is a good reference source).
2. He will either instruct you to return the product to him or recommend another Authorized TORO Service outlet which might be more convenient.
3. Bring the product along with your original sales slip, or other evidence of purchase date, to the service dealer.
4. The servicing dealer will inspect the unit, advise you whether the product is defective and, if so, make all repairs necessary to correct the defect without extra charge to you.

If for any reason you are dissatisfied with the dealer's analysis of the defect or the service performed, you may contact us.

Write:

TORO Consumer Service Department
8111 Lyndale Avenue South
Minneapolis, Minnesota 55420

The above remedy of product defects through repair by an Authorized TORO Service Dealer is the purchaser's sole remedy for any defect.

THERE IS NO OTHER EXPRESS WARRANTY. ALL IMPLIED WARRANTIES OF MERCHANTABILITY AND FITNESS FOR USE ARE LIMITED TO THE DURATION OF THE EXPRESS WARRANTY.

Some states do not allow limitations on how long an implied warranty lasts, so the above limitation may not apply to you.

This warranty applies only to parts or components which are defective and does not cover repairs necessary due to normal wear, misuse, accidents, or lack of proper maintenance. Regular, routine maintenance of the unit to keep it in proper operating condition is the responsibility of the owner.

All warranty repairs reimbursable under The Toro Promise must be performed by an Authorized TORO Service Dealer using Toro approved replacement parts.

Repairs or attempted repairs by anyone other than an Authorized TORO Service Account are not reimbursable under The Toro Promise. In addition, these unauthorized repair attempts may result in additional malfunctions, the correction of which is not covered by warranty.

THE TORO COMPANY IS NOT LIABLE FOR INDIRECT, INCIDENTAL OR CONSEQUENTIAL DAMAGES IN CONNECTION WITH THE USE OF THE PRODUCT INCLUDING ANY COST OR EXPENSE OF PROVIDING SUBSTITUTE EQUIPMENT OR SERVICE DURING PERIODS OF MALFUNCTION OR NON-USE.

Some states do not allow the exclusion or limitation of incidental or consequential damages, so the above limitation or exclusion may not apply to you.

This warranty gives you specific legal rights, and you may also have other rights which vary from state to state.

COUNTRIES OTHER THAN THE UNITED STATES OR CANADA

Customers who have purchased TORO products exported from the United States or Canada should contact their TORO Distributor (Dealer) to obtain guarantee policies for your country, province or state. If for any reason

you are dissatisfied with your Distributor's service or have difficulty obtaining guarantee information, contact the TORO importer. If all other remedies fail, you may contact us at The Toro Company.

PRODUCT CHANGES

In an effort to make improvements available to TORO owners as quickly as possible, minor changes are incorporated into Toro's products from time to time that do not become immediately shown in the Parts Catalog. If such a change apparently has been made in your unit, which is not reflected in your manual, see your TORO distributor or his Authorized TORO Service Dealer for information and part numbers.

IMPORTANT ORDERING INSTRUCTIONS

Model and Serial Numbers

The Blower has two identification numbers: a model number and a serial number. The two numbers are stamped on a decal which is located on left front corner of engine plate. In any correspondence concerning the Blower, supply model and serial numbers to assure that correct information and replacement parts are obtained.

To order replacement parts from an Authorized TORO Service Dealer, supply the following information:

1. Model and serial numbers of the Blower.
2. Part number, description, and quantity of part(s) desired.

NOTE: Do not order by reference number if a parts catalog is being used; use the **PART NUMBER**.

Keep Your TORO All Toro



Insist on Genuine Toro Parts

MAINTENANCE RECORD

[illegible]