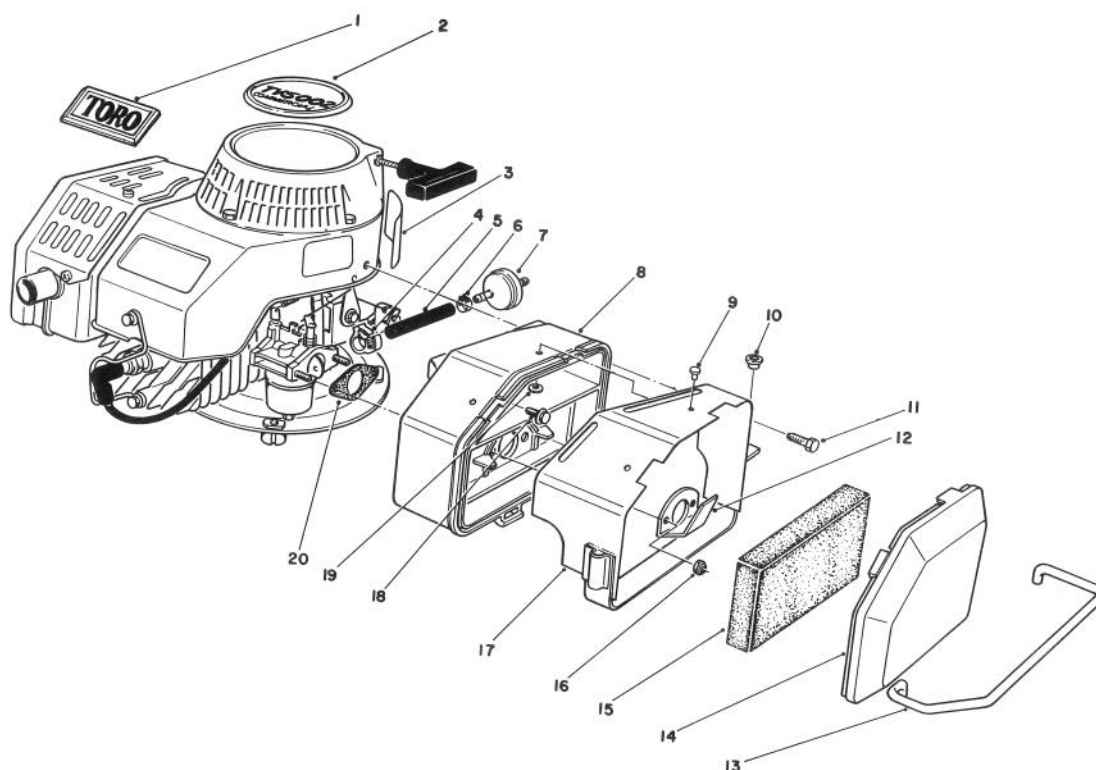


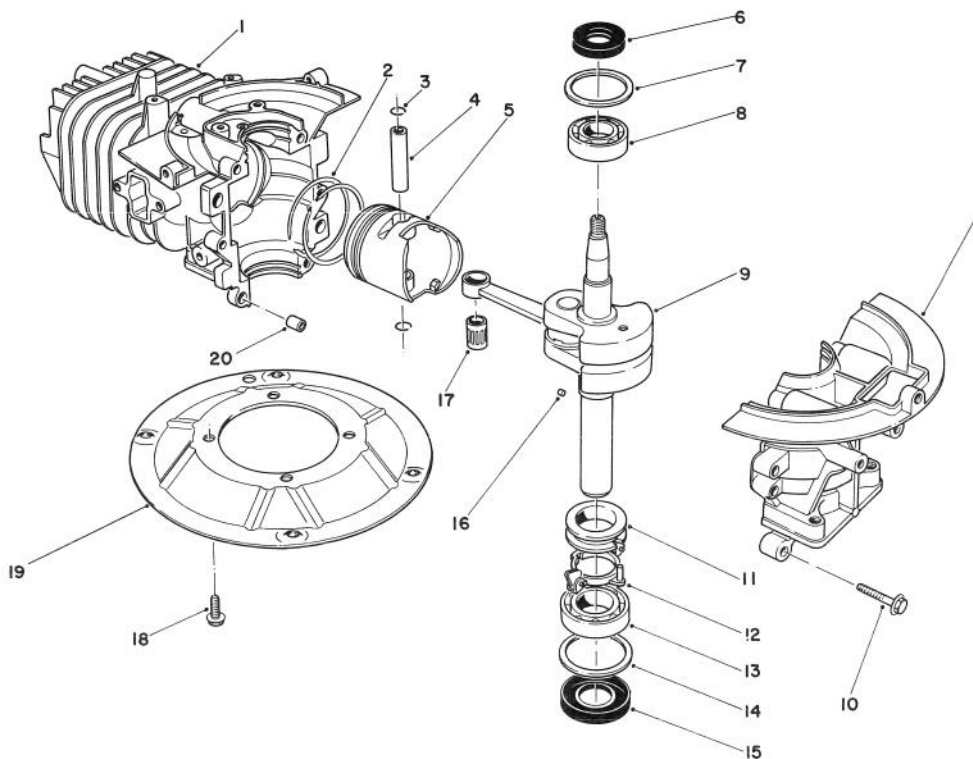


MODEL NO. 59260-6000001 &amp; UP

**PARTS  
CATALOG**
**2-CYCLE REPLACEMENT ENGINE (COMMERCIAL)**

**ENGINE ASSEMBLY**

Ref. No.	Part No.	Description	No. Used
1	46-8291	Plate — Toro Logo	1
2	49-9030	Plate — Engine Logo	1
3	52-3420	Decal — Fuel Mixing	1
4	51-3200	Clamp — Fuel Line	1
5	51-3211	Fuel Line	1
6	2210-185	Clamp — Fuel Line	1
7	42-5240	Filter — Fuel	1
8	52-2200	Air Cleaner Assembly (Incl. Ref. #9, 17 & 19)	1
9	3296-5	Rivet	2
10	237-127	Snap Bushing	1

Ref. No.	Part No.	Description	No. Used
11	81-1280	Screw — Hex Hd.	1
12	81-0140	Deflector — Spitback	1
13	52-2240	Guard — Air Cleaner	1
14	81-0120	Cover — Air Cleaner	1
15	81-0100	Foam Element — Air Cleaner	1
16	49-7810	Nut — Lock	2
17	52-2250	Band — Air Cleaner	1
18	51-3220	Screw — Hex Flange Hd.	1
19	3269-6	Washer	2
20	81-0090	Gasket — Air Cleaner	1

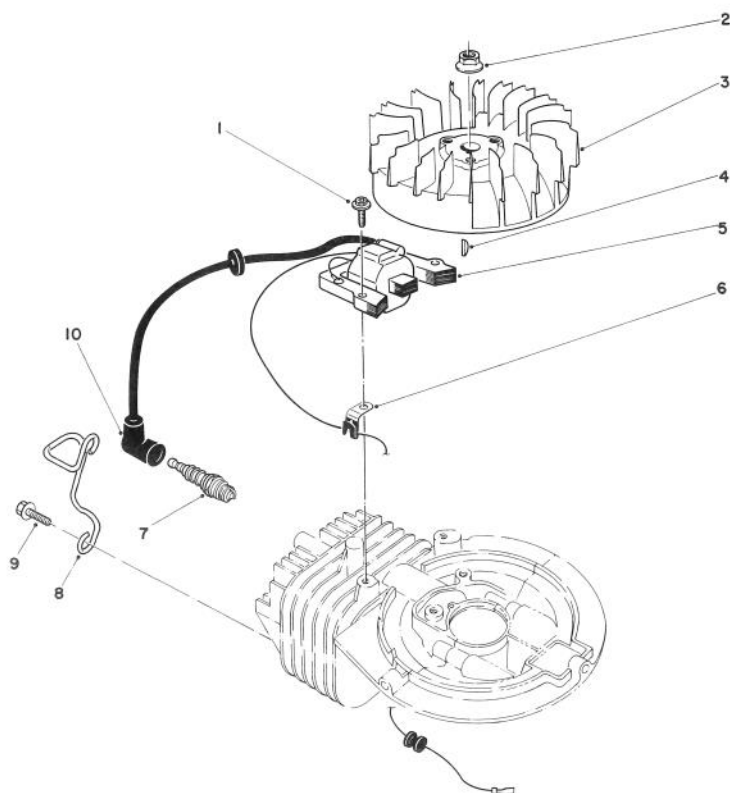


## SHORT BLOCK ASSEMBLY

Ref. No.	Part No.	Description	No. Used
1	81-2800	Crankcase/Cylinder Assy.	1
2	81-0590	Ring Set	1
3	81-0620	Circlip	2
4	81-0600	Wrist Pin	1
5	81-2140	Piston — 58 mm	1
6	81-0720	Oil Seal — Upper	1
7	81-0710	Thrust Washer — Upper	1
8	81-0690	Bearing — Upper 20 mm	1
9	81-4680	Crankshaft/Connecting Rod Assembly	1
10	81-0540	Bolt (30 mm Lg.)	6

Ref. No.	Part No.	Description	No. Used
11	81-0770	Collar — Governor	1
12	81-0750	Bracket — Governor Arm	1
13	81-0700	Bearing — Lower 25 mm	1
14	81-0730	Thrust Washer — Lower	1
15	81-0740	Oil Seal — Lower	1
16	81-0760	Pin	1
17	81-0610	Bearing — Wrist Pin	1
18	81-0570	Bolt	4
19	81-0560	Plate — Mounting	1
20	81-0520	Pin — Crankcase Dowel	2
*	12-2499	Short Block	1

\*Not Illustrated

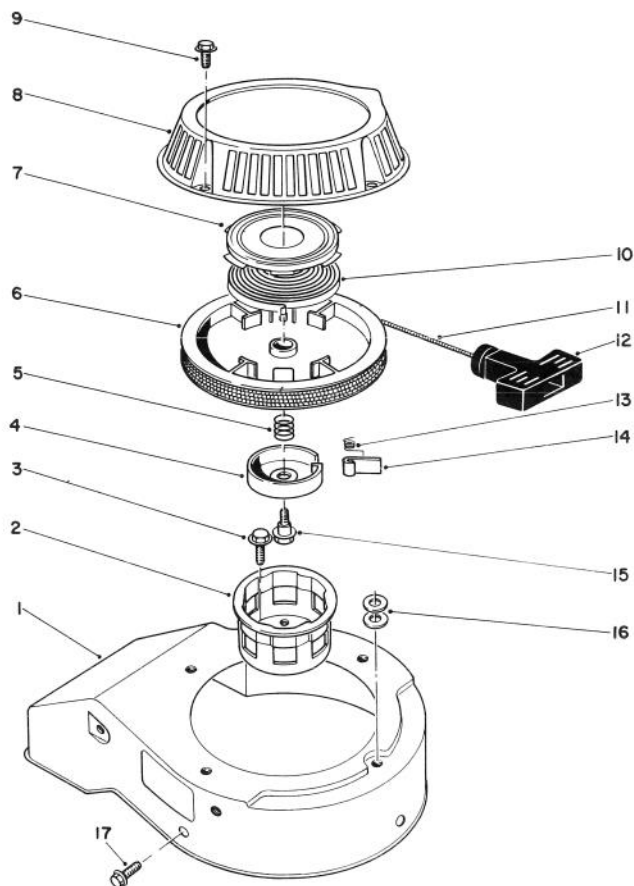


## FLYWHEEL & MAGNETO ASSEMBLY

Ref. No.	Part No.	Description	No. Used
1	81-2050	Capscrew — Allenhead	2
2	81-1330	Nut	1
3	81-2810	Flywheel — Magneto	1
4	81-2370	Key — Flywheel	1
5	81-2820	Coil/Ignition Assembly	1
6	81-1480	Clamp	1

Ref. No.	Part No.	Description	No. Used
7	81-0181	Spark Plug	1
8	81-2120	Guard — Spark Plug	1
9	81-2350	Bolt — Self Tapping (20 mm Lg.)	2
10	81-1500	Cap Assembly — Spark Plug	1
*	41-7650	Puller — Flywheel	1

\*Not Illustrated

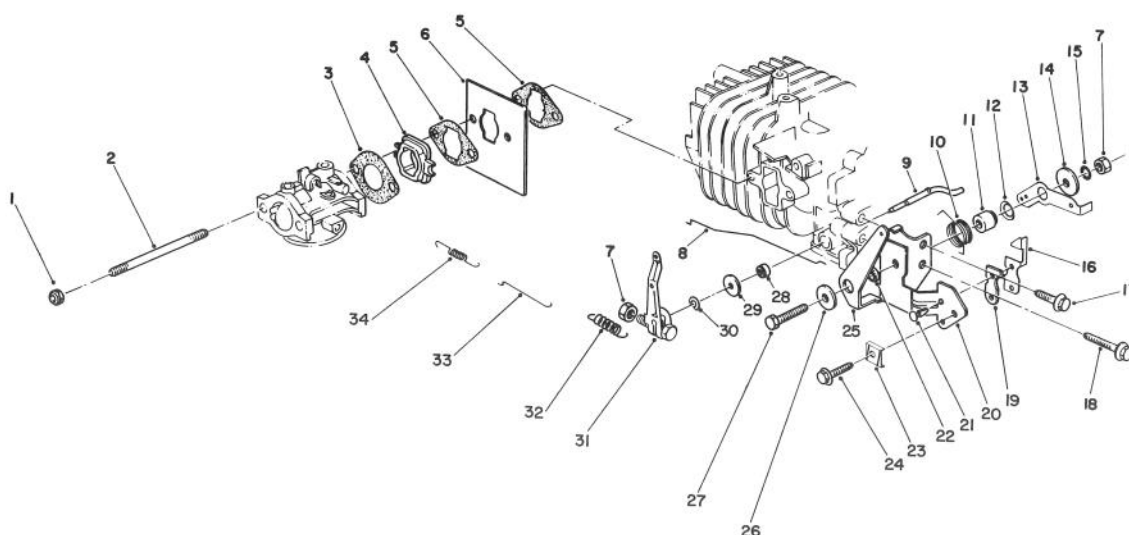


## RECOIL STARTER ASSEMBLY

Ref. No.	Part No.	Description	No. Used
1	81-2080	Cover — Cooling Fan	1
2	81-2170	Pulley — Starter Cup	1
3	81-1300	Bolt 16 mm Lg.	3
4	81-1250	Retainer — Dog	1
5	81-1240	Spring — Compression	1
6	81-1210	Pulley — Rope	1
7	81-1640	Retainer — Recoil Spring	1
8	81-2100	Case — Starter	1
9	81-1280	Bolt	4
10	81-1200	Spring — Recoil	1
11	81-1270	Rope	1

Ref. No.	Part No.	Description	No. Used
12	81-1630	Handle — Recoil	1
13	81-1220	Spring — Dog	1
14	81-1230	Dog — Starter	1
15	81-1260	Bolt Shoulder	1
16	3256-63	Washer — Plain	2
17	81-1170	Bolt — Self Tapping (15 mm Lg.)	2
*	81-2030	Starter Assembly (Incl. Ref. #4-15)	1
*	81-2300	Spring & Retainer (Incl. Ref. #7 & 10)	1

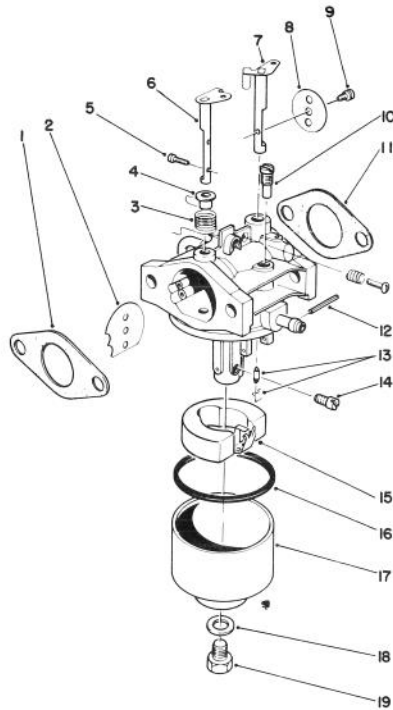
\*Not Illustrated



## GOVERNOR ASSEMBLY

Ref. No.	Part No.	Description	No. Used
1	49-7810	Nut — Lock	2
2	81-2240	Stud Bolt — Carburetor	2
3	81-0780	Gasket — Carburetor	1
4	81-1290	Insulator — Carburetor	1
5	81-2320	Gasket — Shield	2
6	81-2330	Shield — Carburetor	1
7	81-0900	Nut	2
8	81-1720	Rod — Choke	1
9	81-0840	Shaft — Governor	1
10	81-2460	Spring — Choke Control Lever	1
11	81-1770	Spacer — Governor Spring Lever	1
12	81-1820	Washer — Governor Spring Lever	1
13	81-2850	Level — Governor Spring	1
14	81-1750	Washer — Governor Spring Lever	1
15	81-1450	Washer — Lock	1
16	81-1840	Terminal — Kill Switch	1

Ref. No.	Part No.	Description	No. Used
17	81-1170	Bolt — Self Tapping (15mm Lg.)	1
18	81-0540	Bolt (30mm Lg.)	1
20	81-1830	Insulator — Kill Switch	1
21	81-2420	Bracket — Throttle Control	1
22	81-1850	Rivet — Kill Switch	2
23	81-2470	Spacer — Choke Control Lever	1
24	81-2430	Clamp — Cable	1
25	50-0130	Bolt — Cable Clamp	1
26	81-1710	Lever — Choke Control	1
27	50-0760	Washer — Choke Control Lever	1
28	81-1730	Bolt — Throttle Control Bracket	1
29	81-0850	Oil Seal — Governor Shaft	1
30	81-0860	Washer	1
31	81-0870	E-Ring	1
32	81-2840	Governor Arm/Bolt Assembly	1
33	81-2830	Spring — Governor	1
34	81-0910	Rod — Carburetor	1
35	81-0920	Spring — Carburetor Rod	1

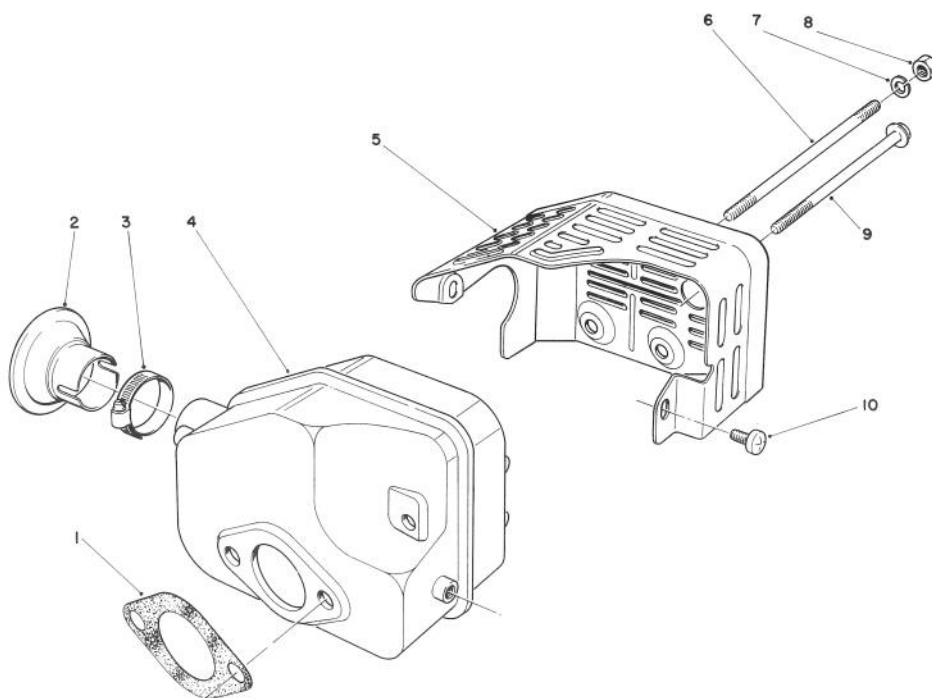


## CARBURETOR ASSEMBLY

Ref. No.	Part No.	Description	No. Used
1	81-0090	Gasket	1
2	81-0240	Valve — Choke	1
3	81-0230	Valve — Spring	1
4	81-0220	Bushing — Choke	1
5	81-2160	Screw — Choke Plate	2
6	81-1950	Shaft — Choke	1
7	81-0250	Shaft — Throttle	1
8	81-0260	Valve — Throttle	1
9	81-0270	Screw — Throttle	1
10	81-1030	Jet — Pilot (#40)	1
11	81-0780	Gasket	1
12	81-0980	Pin — Float	1
13	81-1600	Needle Valve — Float	1

Ref. No.	Part No.	Description	No. Used
14	81-1940	Jet — Main (#76.3)	1
*	81-2340	Jet — Main (#72.5) High Altitude Above 6,000 ft. (Optional)	1
15	81-0970	Float	1
16	81-1010	Gasket — Float Bowl	1
17	81-1610	Bowl — Float	1
18	81-1020	Gasket — Bowl Capscrew	1
19	81-1000	Capscrew — Bowl	1
*	81-1960	Carburetor Kit (Incl. Ref. #4, 6, 9, 11 & 13)	1
*	81-1930	Carburetor Assembly Complete	1

\*Not Illustrated

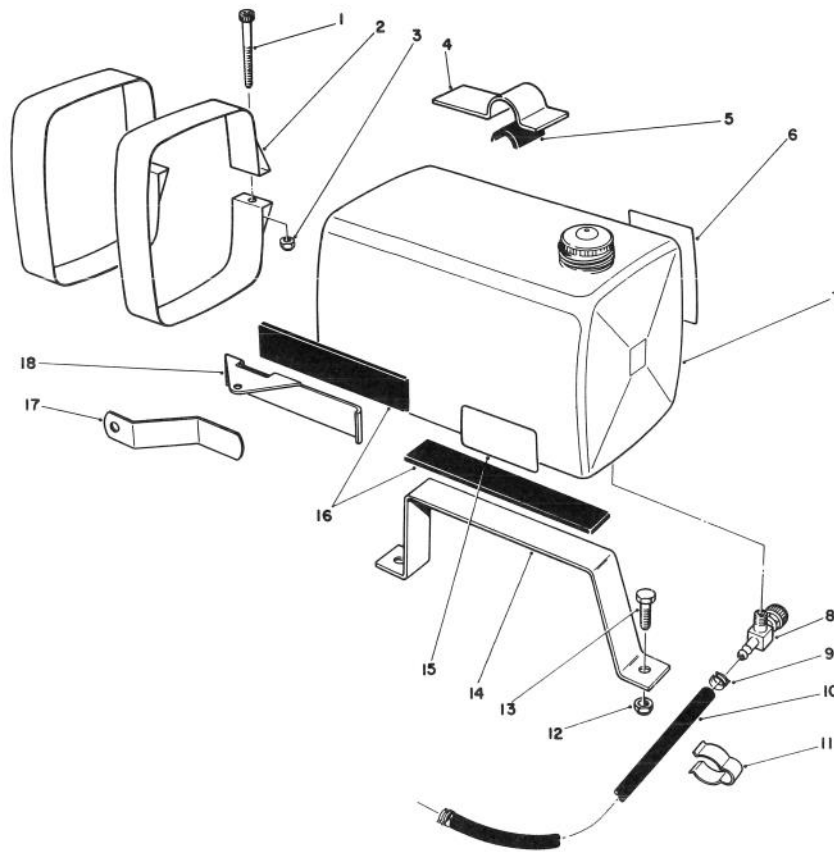


## MUFFLER ASSEMBLY

Ref. No.	Part No.	Description	No. Used
1	81-1080	Gasket — Muffler	1
2	81-0200	Spark Arrester (Optional)	1
3*		Clamp — Hose	1
4	81-1090	Muffler	1
5	81-2450	Cover — Muffler	1

Ref. No.	Part No.	Description	No. Used
6	81-1100	Bolt	2
7	81-1120	Washer — Lock	2
8	81-1110	Nut	2
9	81-1150	Bolt — Self Tapping	1
10	81-1140	Screw — Phillips Hd.	2

\*Obtain Locally.



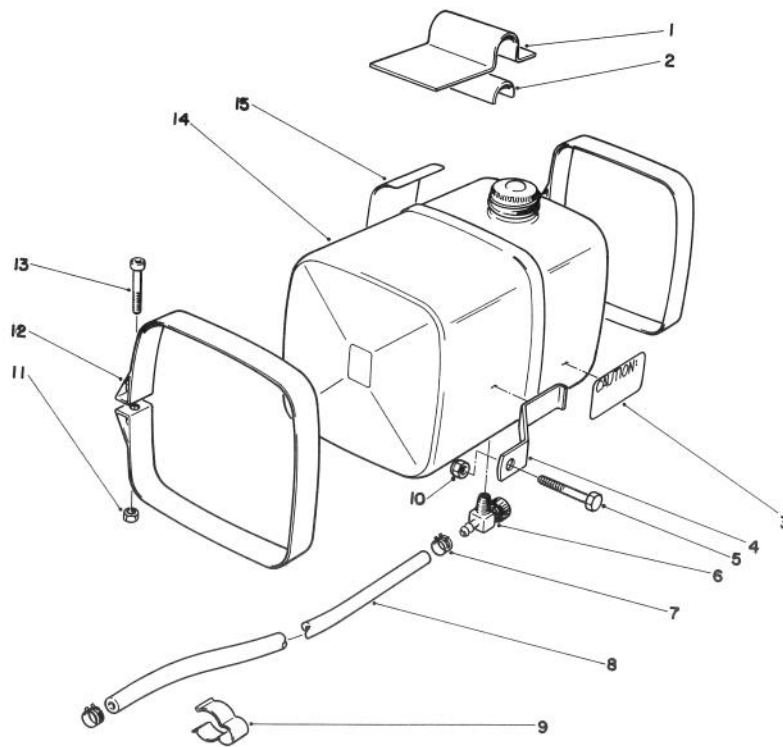
### 3 QT. FUEL TANK ASSEMBLY NO. 52-3690 (Optional)

Ref. No.	Part No.	Description	No. Used
1	3274-62	Screw — Hex Socket Hd.	2
2	52-2320	Strap — Tank Mounting	2
3	3217-5	Nut — Hex	2
4	52-3250	Bracket — Top (Handle Mount)	1
5*		Spacer	1
6	52-2350	Decal — Fuel Tank	1
7	52-2330	Fuel Tank w/Cap	1
8	304-71	Valve — Fuel Shutoff	1
9	2210-185	Clamp — Fuel Line	2
10	51-3212	Fuel Line — 3/4"	1

Ref. No.	Part No.	Description	No. Used
11	3-5181	Clamp (Handle Mount)	1
12	32152-1	Nut — Lock	2
13	322-5	Screw — Hex Hd.	2
14	52-2310	Bracket — Bottom (Deck Mount)	1
15	28-6910	Decal — Caution	1
16	52-2290	Pad — Isolator	2
17	39-5940	Bracket — Side (Handle Mount)	1
18	52-2300	Bracket — Front (Deck Mount)	1

\*Used for 7/8" Diameter Handle Mount Applications only, cut to size from Isolator Pad Item #16.





## 5 QT. FUEL TANK ASSEMBLY NO. 52-3710 (Optional)

Ref. No.	Part No.	Description	No. Used
1	39-6960	Bracket — Tank (Upper)	1
2*	52-2290	Pad — Isolator	1
3	23-6910	Decal — Caution	1
4	39-5940	Brace — Tank	1
5	322-7	Screw Hex Hd.	1
6	304-71	Valve — Fuel Shutoff	1
7	2210-185	Clamp — Fuel Line	2
8	51-3212	Fuel Line — 34"	1

Ref. No.	Part No.	Description	No. Used
9	3-5181	Clamp — Handle	1
10	3296-29	Nut — Lock	1
11	3217-5	Nut — Hex	2
12	39-0570	Strap — Tank	2
13	3274-62	Screw — Socket Hd.	2
14	52-2331	Fuel Tank w/Cap	1
15	52-2350	Decal — Fuel Tank	1

\*Used for 7/8" Diameter Handle Mount Applications only, cut to size.

## PRODUCT CHANGES

In an effort to make improvements available to TORO owners as quickly as possible, minor changes are incorporated into Toro's products from time to time that do not become immediately shown in the Parts Catalog. If such a change apparently has been made in your unit, which is not reflected in your manual, see your TORO Distributor or his Authorized TORO Service Dealer for information and part numbers.

## IDENTIFICATION AND ORDERING

### MODEL AND SERIAL NUMBERS

The Engine has two identification numbers: a model number and a serial number. The two numbers are stamped on a decal which is located on the engine mounting plate. In any correspondence concerning the engine, supply model and serial numbers to assure that correct information and replacement parts are obtained.

To order replacement parts from an Authorized TORO Service Dealer, supply the following information:

1. Model and serial number of the engine.
2. Part number, description, and quantity of part(s) desired.

**Note:** Do not order by reference number if a parts catalog is being used; use the PART NUMBER.

## The Toro Promise

### A ONE YEAR LIMITED WARRANTY

*The Toro Company promises to repair your TORO Product if defective in materials or workmanship. The following time periods from the date of purchase apply:*

Residential Product ..... 1 Year  
Residential Products Used Commercially ..... 45 Days

*The costs of parts and labor are included, but the customer pays the transportation costs. Just return any residential product to an Authorized TORO Service Dealer or TORO Distributor.*

Should you feel your TORO Product is defective and wish to rely on The Toro Promise, the following procedure is recommended:

1. Contact any Authorized TORO Service Dealer, TORO Master Service Dealer, or TORO Distributor (the Yellow Pages of your telephone directory is a good reference source).
2. He will either instruct you to return the product to him or recommend another Authorized TORO Service outlet which might be more convenient.
3. Bring the product along with your original sales slip, or other evidence of purchase date, to the service dealer.
4. The servicing dealer will inspect the unit, advise you whether the product is defective and, if so, make all repairs necessary to correct the defect without extra charge to you.

If for any reason you are dissatisfied with the dealer's analysis of the defect or the service performed, you may contact us.

Write:

TORO Consumer Service Department  
8111 Lyndale Avenue South  
Minneapolis, Minnesota 55420

The above remedy of product defects through repair by an Authorized TORO Service Dealer is the purchaser's sole remedy for any defect.

**THERE IS NO OTHER EXPRESS WARRANTY. ALL IMPLIED WARRANTIES OF MERCHANTABILITY AND**

**FITNESS FOR USE ARE LIMITED TO THE DURATION OF THE EXPRESS WARRANTY.**

Some states do not allow limitations on how long an implied warranty lasts, so the above limitation may not apply to you.

This warranty applies only to parts or components which are defective and does not cover repairs necessary due to normal wear, misuse, accidents, or lack of proper maintenance. Regular, routine maintenance of the unit to keep it in proper operating condition is the responsibility of the owner.

All warranty repairs reimbursable under The Toro Promise must be performed by an Authorized TORO Service Dealer using Toro approved replacement parts.

Repairs or attempted repairs by anyone other than an Authorized TORO Service Account are not reimbursable under The Toro Promise. In addition, these unauthorized repair attempts may result in additional malfunctions, the correction of which is not covered by warranty.

**THE TORO COMPANY IS NOT LIABLE FOR INDIRECT, INCIDENTAL OR CONSEQUENTIAL DAMAGES IN CONNECTION WITH THE USE OF THE PRODUCT INCLUDING ANY COST OR EXPENSE OF PROVIDING SUBSTITUTE EQUIPMENT OR SERVICE DURING PERIODS OF MALFUNCTION OR NON-USE.**

Some states do not allow the exclusion or limitation of incidental or consequential damages, so the above limitation or exclusion may not apply to you.

This warranty gives you specific legal rights, and you may also have other rights which vary from state to state.

## COUNTRIES OTHER THAN THE UNITED STATES OR CANADA

Customers who have purchased TORO products exported from the United States or Canada should contact their TORO Distributor (Dealer) to obtain guarantee policies for your country, province or state. If for any reason

you are dissatisfied with your Distributor's service or have difficulty obtaining guarantee information, contact the TORO importer. If all other remedies fail, you may contact us at The Toro Company.

## MAINTENANCE RECORD

[illegible]

## MAINTENANCE RECORD

[illegible]