



Slow Moving Vehicle Sign Kit

Pro Sweep 5200

Part No. 107-1372

Form No. 3352-719

Installation Instructions

1. Secure the mounting strap to the manual tube mounting bracket with (2) carriage bolts , washers and lock nuts as shown in figure 1.
2. Mount the slow moving vehicle sign to the strap with (2) capscrews, (4) washers and (2) nut as shown in figure 1.

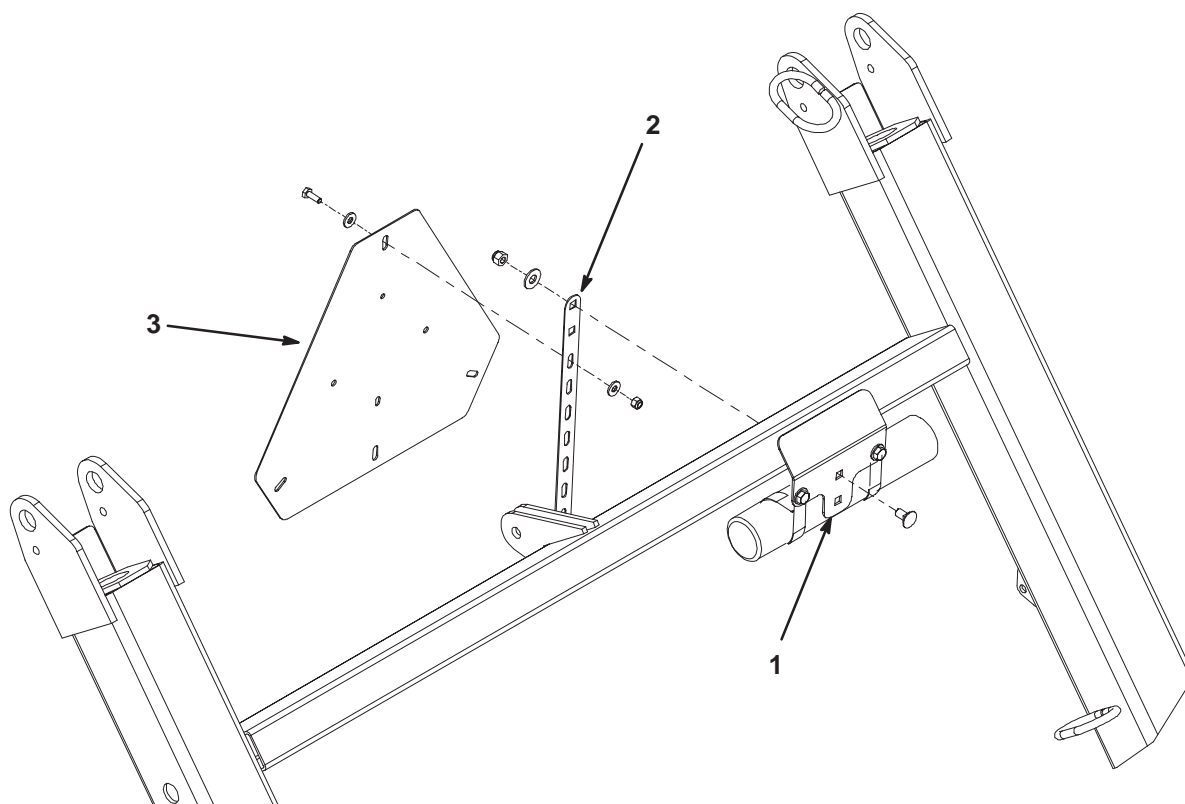


Figure 1

1. Manual tube bracket

2. Mounting strap

3. Slow moving vehicle sign