



## 27cm Electric Trimmer

Model No. 51248 - 250000001 and up.

### Parts Catalog

#### Ordering Replacement Parts

To order replacement parts, please supply the part number, the quantity, and the description of each part desired.

#### Understanding Reference Numbers

Each identified part in an illustration has a reference number. The reference number for a part also appears in the parts list, along with other information about the part.

This catalog uses two special reference number formats, one to indicate parts in a service assembly and another to indicate the quantity of a given part in an illustration.

#### Service Assembly Reference Numbers

Parts in service assemblies have reference numbers in the form a:b. The a represents the reference number of the entire service assembly and the b represents a sequential number unique to each part within the service assembly.

For example, a wheel assembly might be identified by reference number 6, the tire by 6:1, the valve by 6:2, and the wheel by 6:3. When you order the assembly identified by reference number 6, you receive all parts identified by reference numbers 6:1, 6:2, and 6:3. However, you may also order any part individually. Reference numbers of this type appear in illustrations and in part lists.

#### Reference Numbers Indicating Quantity

In an illustration, if a reference number indicates more than one part, the reference number has the form nX y. The n represents the quantity of the part, the X is the multiplication symbol, and the y represents the reference number.

For example, in an illustration, the reference number 2X 37 means that two of the parts identified by reference number 37 are indicated.

## Contents

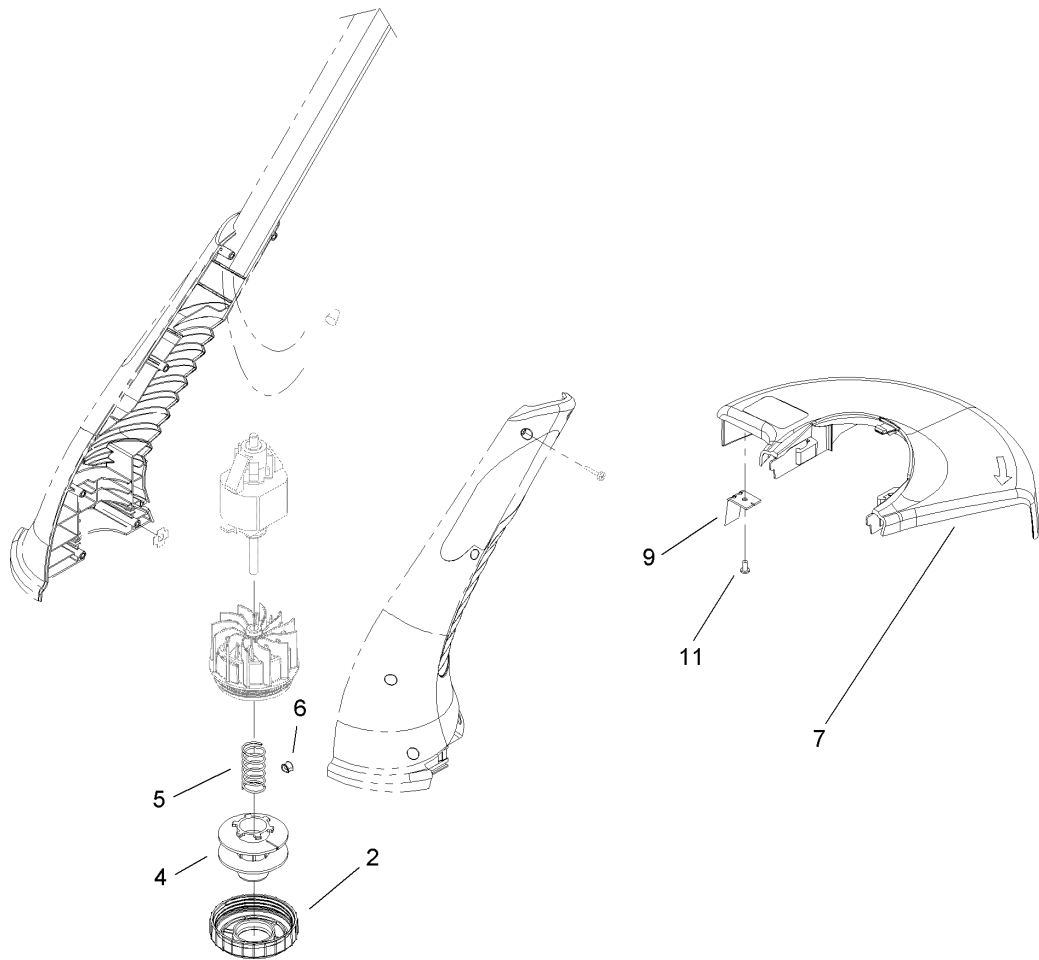
Description	Page	Description	Page
Assist Handle Assembly	..... 3	Spool and Shield Assembly	..... 4

## Part Description Abbreviations

Part descriptions in this catalog may include the following abbreviations.

AR. ....	as required	HWHTF. ....	hex washer head thread forming
ASM. ....	assembly	HYD. ....	hydraulic
BBC. ....	blade brake clutch	INC. ....	incorporated
CARR. ....	carriage	LH. ....	left hand
DEG. ....	degrees	NI. ....	nylon insert
EXT. ....	external	NPTF. ....	national pipe thread fine
FH. ....	flat head	PPH. ....	phillips pan head
GA. ....	gauge	PPHTF. ....	phillips pan head thread forming
HF. ....	hex flange	PRH. ....	phillips round head
HH. ....	hex head	PTH. ....	phillips truss head
HHF. ....	hex head flange	PTO. ....	power take off
HHFTF. ....	hex head flange thread forming	RH. ....	right hand
HJ. ....	hex jam	ROPS. ....	roll over protection system
HLH. ....	hex lag head	SFH. ....	slotted fillister head
HOC. ....	height-of-cut	SHH. ....	slotted hex head
HSBH. ....	hex socket button head	SHWH. ....	slotted hex washer head
HSFH. ....	hex socket flat head	SPH. ....	slotted pan head
HSH. ....	hex socket head	SQH. ....	square head
HWH. ....	hex washer head		

3



Spool and Shield Assembly

Ref	Part No.	Qty.	Description				
2	105-9422	1	Cap-Drum				
4	88175	1	.065 Spool ASM				
4:1	73-8190	1	Spool-Large (Not Illustrated)				
4:2	88003	31	Line-Filament (Not Illustrated)				
5	105-9423	1	Spring-Extension				
6	107-3344	1	Eyelet-Guide				
7	105-9428	1	Shield-11 Inch				
9	106-6467	1	Blade-Cutoff				
11	105-9437	1	Screw-PPH				

## NOTES

## NOTES

## NOTES

