



## 15in Trim and Edge Electric Trimmer

Model No. 51346 - 250000001 and up.

### Parts Catalog

---

#### Ordering Replacement Parts

To order replacement parts, please supply the part number, the quantity, and the description of each part desired.

#### Understanding Reference Numbers

Each identified part in an illustration has a reference number. The reference number for a part also appears in the parts list, along with other information about the part.

This catalog uses two special reference number formats, one to indicate parts in a service assembly and another to indicate the quantity of a given part in an illustration.

#### Service Assembly Reference Numbers

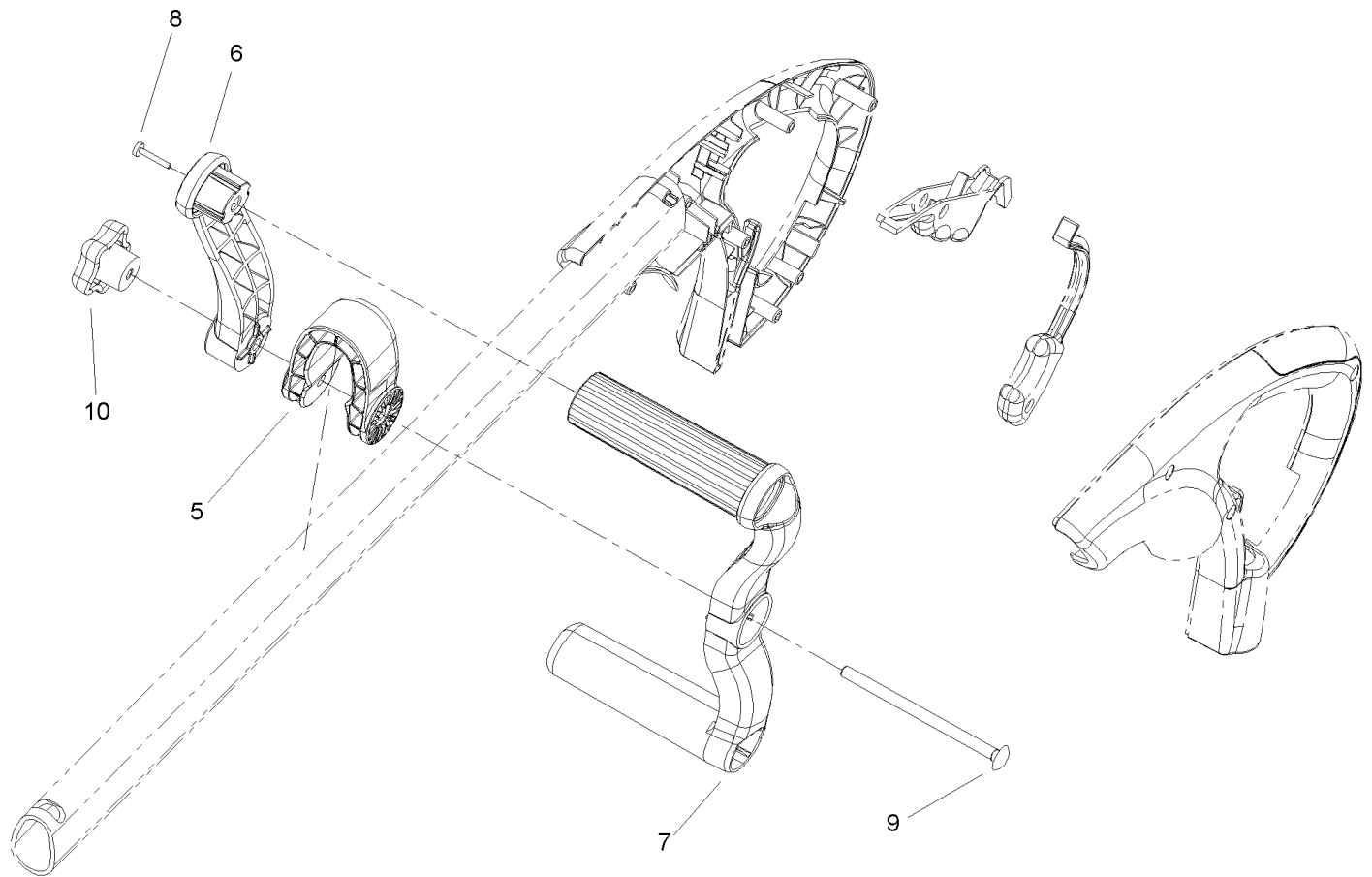
Parts in service assemblies have reference numbers in the form a:b. The a represents the reference number of the entire service assembly and the b represents a sequential number unique to each part within the service assembly.

For example, a wheel assembly might be identified by reference number 6, the tire by 6:1, the valve by 6:2, and the wheel by 6:3. When you order the assembly identified by reference number 6, you receive all parts identified by reference numbers 6:1, 6:2, and 6:3. However, you may also order any part individually. Reference numbers of this type appear in illustrations and in part lists.

#### Reference Numbers Indicating Quantity

In an illustration, if a reference number indicates more than one part, the reference number has the form nX y. The n represents the quantity of the part, the X is the multiplication symbol, and the y represents the reference number.

For example, in an illustration, the reference number 2X 37 means that two of the parts identified by reference number 37 are indicated.



## Handle Assembly

| Ref | Part No. | Qty. | Description           |  |  |  |  |
|-----|----------|------|-----------------------|--|--|--|--|
| 5   | 107-3348 | 1    | Collar-Handle, Assist |  |  |  |  |
| 6   | 107-3346 | 1    | Handle-Assist, Right  |  |  |  |  |
| 7   | 107-3347 | 1    | Handle-Assist, Left   |  |  |  |  |
| 7   | 108-6438 | 1    | Assist Handle ASM     |  |  |  |  |
| 8   | 94-4496  | 1    | Screw-PPH             |  |  |  |  |
| 9   | 108-6405 | 1    | Screw-Carriage        |  |  |  |  |
| 10  | 108-6402 | 1    | Knob-Handle           |  |  |  |  |



