



Z400 Z Master[®] With 52in 7-Gauge Side Discharge Mower

Model No. 74410 - 250000001 and up.

Parts Catalog

Ordering Replacement Parts

To order replacement parts, please supply the part number, the quantity, and the description of each part desired.

Understanding Reference Numbers

Each Identified part in an illustration has a reference number. The reference number for a part also appears in the parts list, along with other information about the part.

This catalog uses two special reference number formats, one to indicate parts in a service assembly and another to indicate the quantity of a given part in an illustration.

Service Assembly Reference Numbers

Parts in service assemblies have reference numbers in the form a:b. The a represents the reference number of the entire service assembly and the b represents a sequential number unique to each part within the service assembly.

For example, a wheel assembly might be identified by reference number 6, the tire by 6:1, the valve by 6:2, and the wheel by 6:3. When you order the assembly identified by reference number 6, you receive all parts identified by reference numbers 6:1, 6:2, and 6:3. However, you may also order any part individually. Reference numbers of this type appear in illustrations and in part lists.

Reference Numbers Indicating Quantity

In an illustration, if a reference number indicates more than one part, the reference number has the form nX y. The n represents the quantity of the part, the X is the multiplication symbol, and the y represents the reference number.

For example, in an illustration, the reference number 2X 37 means that two of the parts identified by reference number 37 are indicated.

Contents

Description	Page	Description	Page
Front Frame Assembly 3	Cylinder and Crankcase Assembly Kawasaki FH580V-AS14 24
Height of Cut Assembly 4	Piston/Crankshaft Assembly Kawasaki FH580V-AS14 25
Main Frame Assembly 5	Valve and Camshaft Assembly Kawasaki FH580V-AS14 26
Fuel System Assembly 6	Lubrication Equipment Assembly Kawasaki FH580V-AS14 27
Parking Brake Assembly 7	Cooling Equipment Assembly Kawasaki FH580V-AS14 28
Motion Control Assembly 8	Electrical Equipment Assembly Kawasaki FH580V-AS14 29
Hydraulic System Assembly 9	Control Equipment Assembly Kawasaki FH580V-AS14 30
Pump Idler and Belt Assembly 11	Carburetor Assembly Kawasaki FH580V-AS14 31
Engine, Clutch and Muffler Assembly 12	Air Filter and Muffler Assembly Kawasaki FH580V-AS14 32
Deck Mounting Assembly 13	Fuel Tank and Valve Assembly Kawasaki FH580V-AS14 33
Deck Assembly No. 107-1694 14	Starter Assembly Kawasaki FH580V-AS14 34
Idler Assembly 15	Decal Assembly Kawasaki FH580V-AS14 35
Spindle Assembly No. 107-8504 16		
Deck Decal Assembly 17		
Rubber Deflector Assembly No. 108-4060 18		
Electrical Assembly 19		
Seat and Bracket Assembly 20		
Roll-Over-Protection-System Assembly 21		
Roll-Over-Protection-System Assembly No. 107-8093 22		
Seat Assembly No. 107-2116 23		

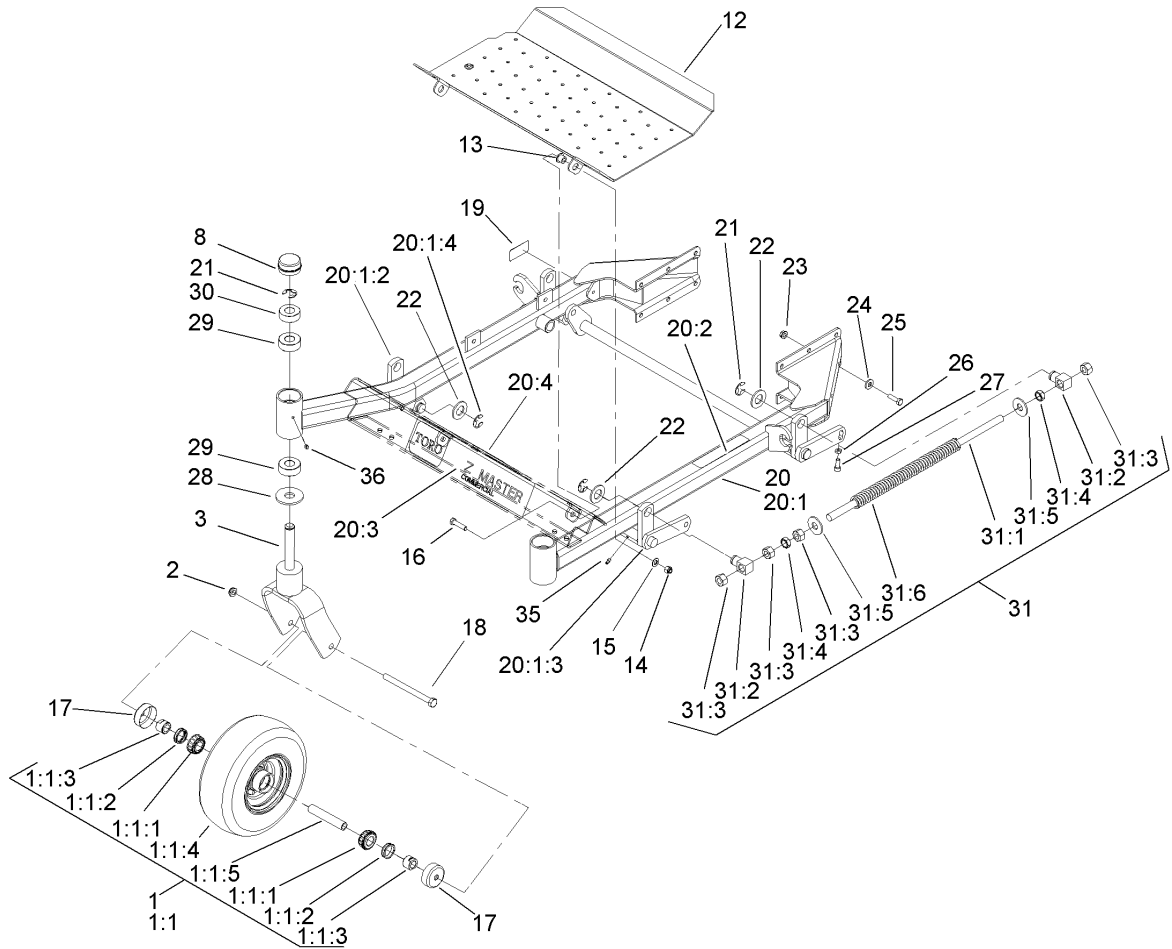
Part Description Abbreviations

Part descriptions in this catalog may include the following abbreviations.

AR. as required	INC. incorporated
ASM. assembly	LH. left hand
CARR. carriage	NI. nylon insert
DEG. degrees	PPH. phillips pan head
FH. flat head	PTH. phillips truss head
GA. gauge	PTO. power take off
HF. hex flange	RH. right hand
HH. hex head	SFH. slotted fillister head
HHF. hex head flange	SHH. slotted hex head
HHFTF. hex head flange thread forming	SHWH. slotted hex washer head
HJ. hex jam	SPH. slotted pan head
HLH. hex lag head	SQH. square head
HOC. height-of-cut	SRH. slotted round head
HS. hex	STD. standard
HSBH. hex socket button head	TAP. self tapping
HSFH. hex socket flat head	TTH. torx truss head
HSH. hex socket head	WH. wing head
HWH. hex washer head	
HWHTF. hex washer head thread forming	
HYD. hydraulic	

Footnotes

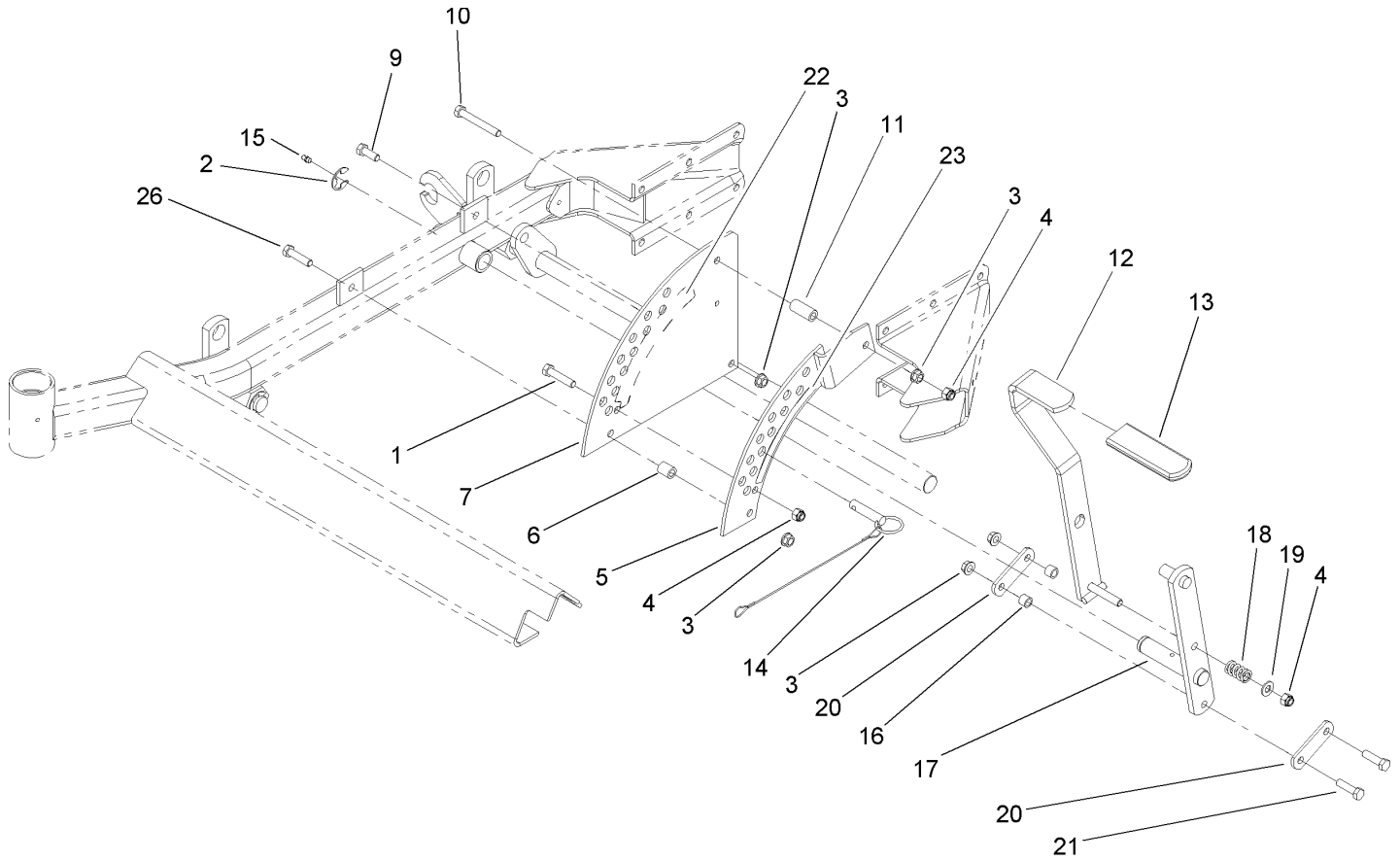
- ❶ Not illustrated
- ❷ Not serviced separately
- ❸ Obtain parts from your local Kawasaki dealer



Front Frame Assembly

Ref	Part No.	Qty.	Description
1	103-3800	2	Wheel And Tire ASM
1:1		1	Wheel And Bearing ASM
1:1:1	1-633585	2	Bearing-Cone, Taper
1:1:2	103-0063	2	Seal-Caster
1:1:3	103-3051	2	Spacer-Nut
1:1:4	103-3151	1	Wheel And Tire ASM
1:1:5	103-3157	1	Axle-Caster
2	3296-45	2	Nut-Lock, NI
3	106-8796-01	2	Caster Fork ASM
8	1-543513	2	Cap-Grease
12	108-5007-03	1	Floor Pan
13	86-2180	2	Bushing-Flange
14	3296-39	2	Nut-Lock, NI
15	3256-24	2	Washer-Flat
16	323-8	2	Screw-HH
17	103-2768	4	Guard-Seal
18	325-20	2	Screw-HH
19	105-2625	1	Decal-Std, Safety
20	108-1130	1	Front Frame ASM
20:1		1	Front Frame ASM
20:1:2	99-3872-01	1	RH Lift Arm ASM
20:1:3	99-3871-01	1	LH Lift Arm ASM
20:1:4	32151-103	2	Ring-Snap
20:2	1-633818	1	Decal-Warning

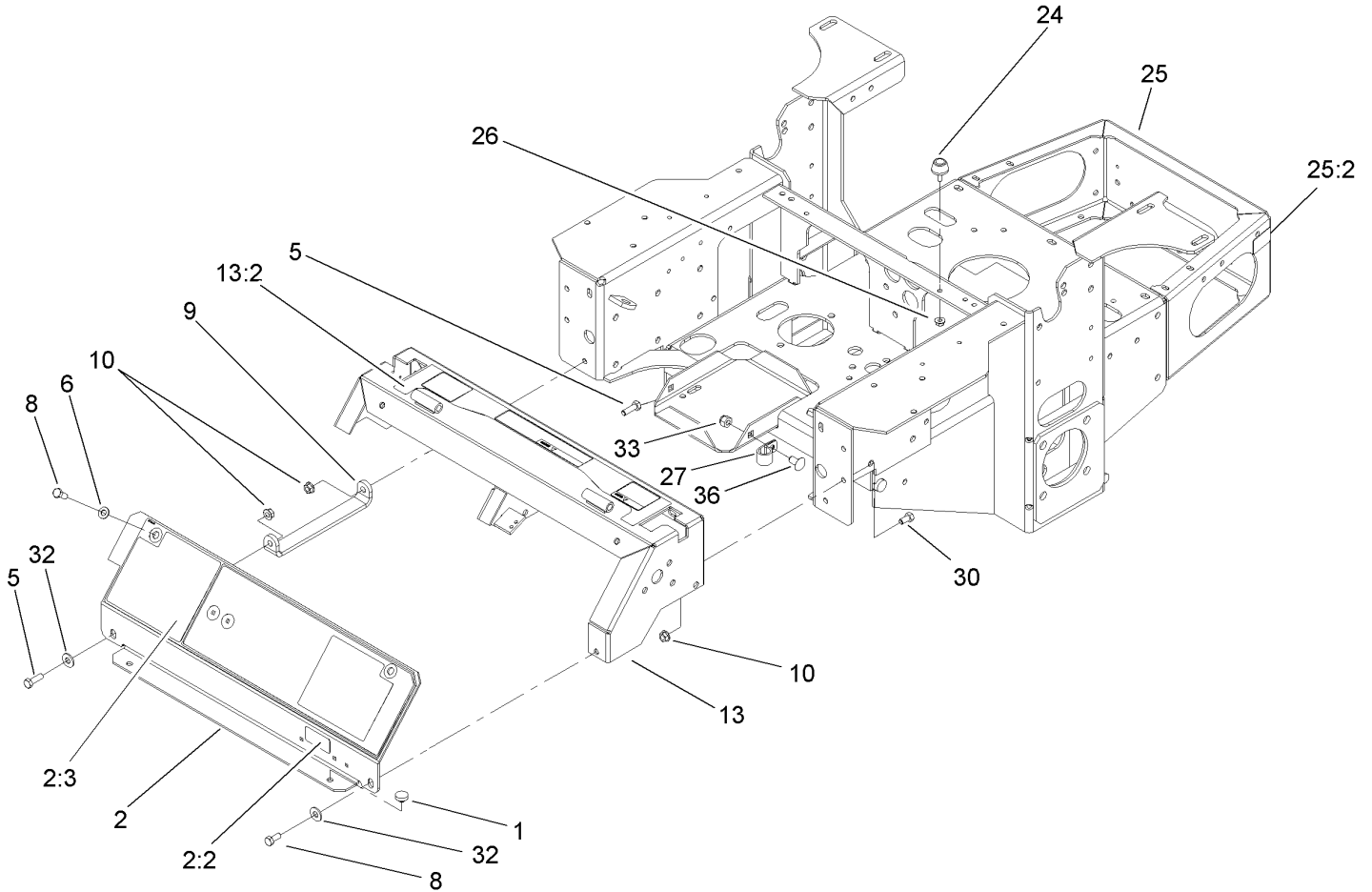
Ref	Part No.	Qty.	Description
20:3	106-9730	1	Decal-
20:4	107-2112	1	Decal-Warning
21	32151-103	6	Ring-Snap
22	3256-29	6	Washer-Flat
23	3290-357	12	Nut-HHF
24	98-5975	12	Washer-Belleville
25	323-7	12	Screw-HH
26	3218-2	2	Nut-Jam
27	3274-18	2	Screw-HSH
28	104-1105	2	Spacer-Support, Deck
29	108-1059	4	Bushing
30	108-2654	2	Spacer
31	1-634439	2	Front Frame Spring ASM
31:1	1-633096	1	Rod-Lift, Deck
31:2	1-633441	2	Swivel-Deck Mount, Rear
31:3	3217-11	4	Nut-Hex
31:4	3218-6	2	Nut-Jam
31:5	3256-7	2	Washer-Flat
31:6	1-633064	1	Spring-Support, Deck
35	302-19	4	Fitting-Grease
36	302-5	2	Fitting-Grease



Height of Cut Assembly

Ref	Part No.	Qty.	Description
1	323-9	1	Screw-HH
2	32151-103	1	Ring-Snap
3	3290-357	5	Nut-HHF
4	3296-39	3	Nut-Lock, NI
5	1-652235-01	1	Plate-Lift, Deck
6	1-633080	1	Bushing-Lever, Lift
7	1-653230-01	1	Plate-Lift, Deck
9	323-6	1	Screw-HH
10	323-13	1	Screw-HH
11	1-633082	1	Bushing-Lever, Lift
12	103-2078-03	1	Handle-Lift
13	1-633295	1	Grip-Lever, Lift
14	106-9951	1	Hitch Pin ASM
15	302-19	1	Fitting-Grease
16	103-1918	2	Bushing
17	106-6598-03	1	Lift Arm ASM
18	1-633325	1	Spring-Compression
19	3256-24	1	Washer-Flat
20	1-633068	2	Arm-Lift, Deck
21	323-29	2	Screw-HH
22	108-1051	1	Decal-Deck Height, Outer
23	108-1050	1	Decal-Deck Height, Inner
26	323-8	1	Screw-HH

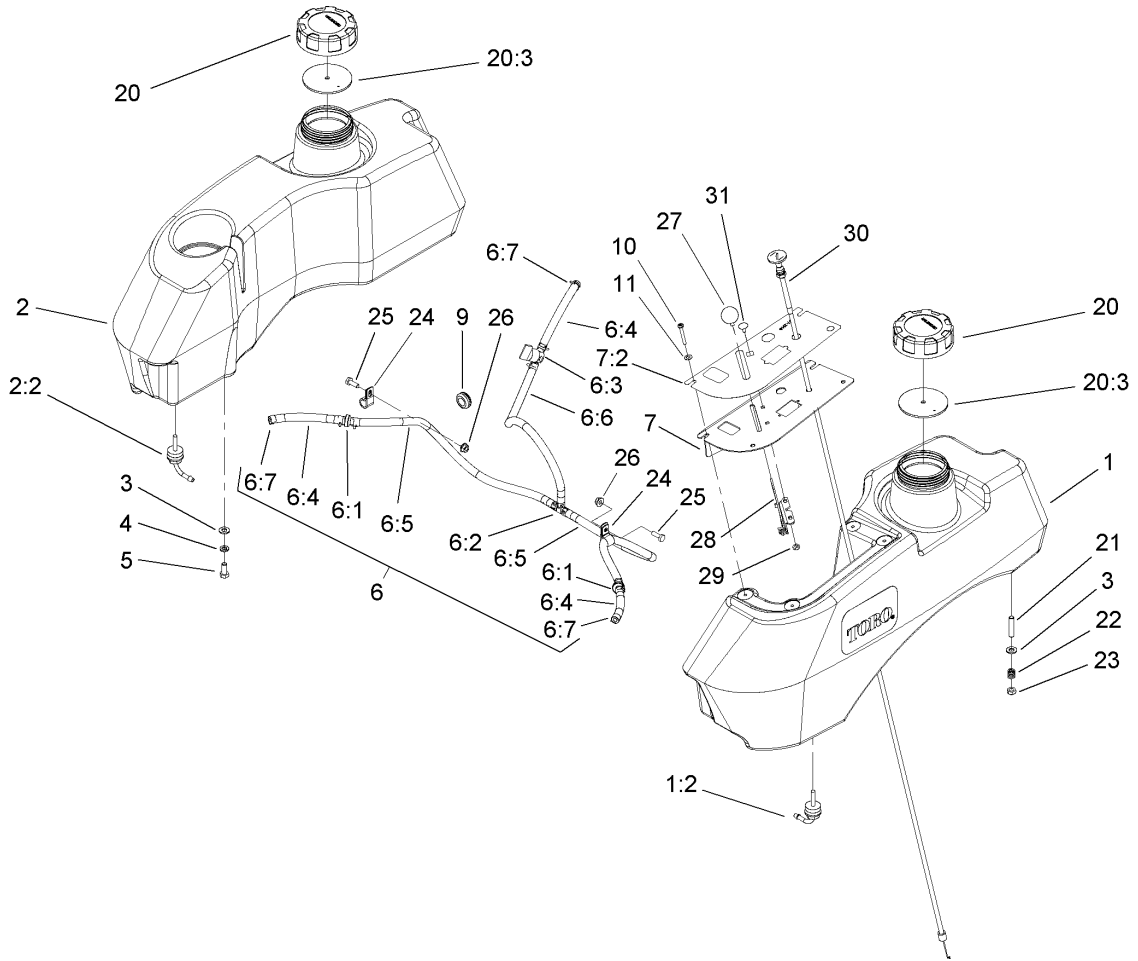
--	--	--	--



Main Frame Assembly

Ref	Part No.	Qty.	Description
1	1-513658	2	Bumper
2	108-1864	1	Panel ASM
2:2	98-4387	1	Decal-Protection, Ear
2:3	107-8445	1	Decal-Cover, Panel
5	322-5	2	Screw-HH
6	3256-23	2	Washer-Flat
8	322-3	3	Screw-HH
9	1-653089-03	1	Bracket
10	32128-20	6	Nut-HF
13	108-5997	1	Console Asm, Z400 (W/ Decals)
13:2	108-5995	1	Decal, Top Console Z400
24	1-523420	2	Bumper
25	108-2782	1	Main Frame ASM
25:2	65-2690	1	Decal-Surface, Hot
26	32128-33	2	Nut-HF
27	1-633396	1	Clip-Loom
30	322-2	4	Screw-HH
32	3256-3	2	Washer-Flat
33	3296-39	1	Nut-Lock, NI
36	3231-21	1	Screw-CARR

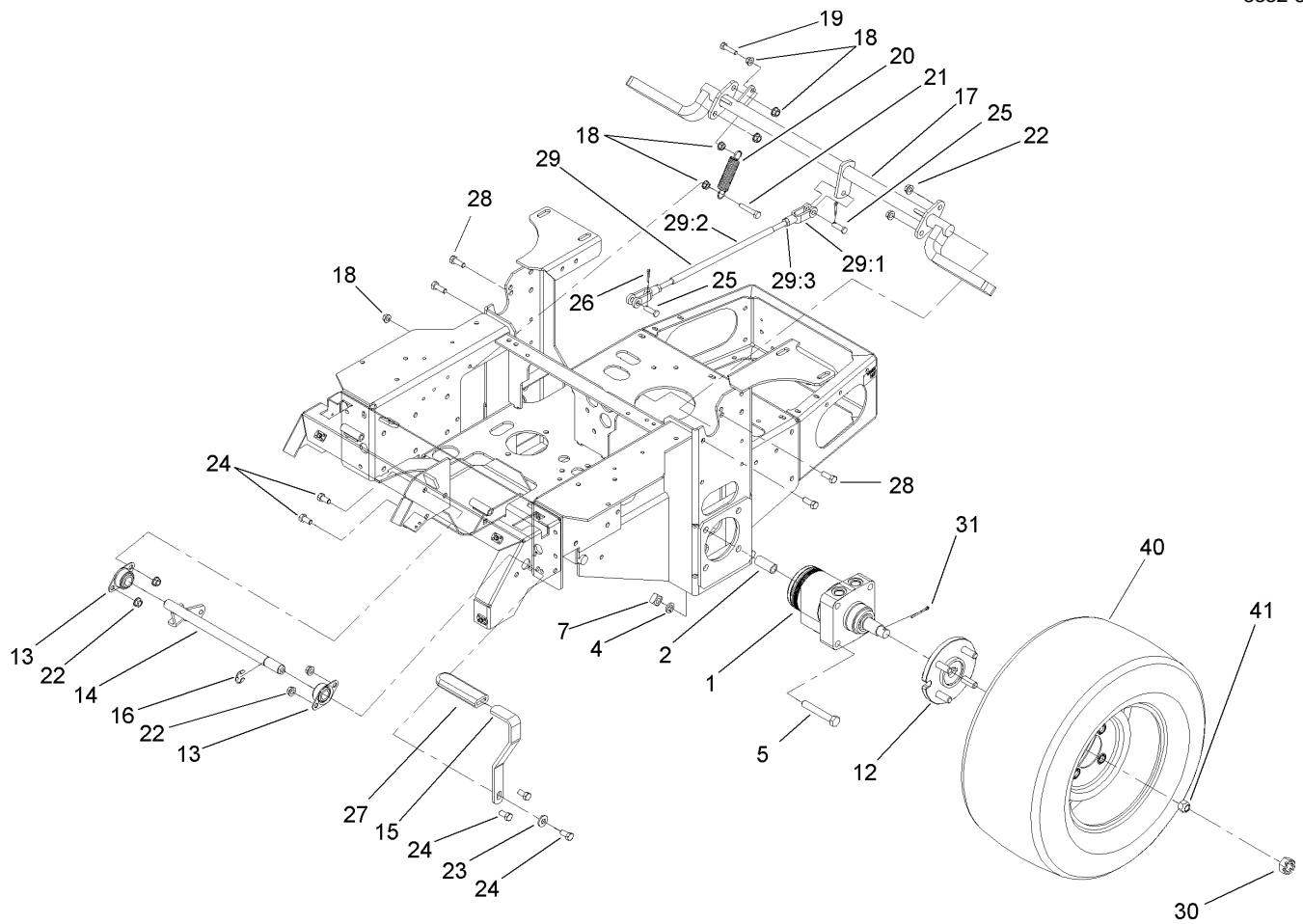
--	--	--	--



Fuel System Assembly

Ref	Part No.	Qty.	Description
1	107-2146	1	LH Fuel Tank ASM
1:2	103-2605	1	Fitting-Fuel, Bulkhead
2	106-9975	1	RH Fuel Tank ASM
2:2	103-2605	1	Fitting-Fuel, Bulkhead
3	3256-23	8	Washer-Flat
4	1-805005	4	Washer-Lock
5	322-3	4	Screw-HH
6		1	Fuel Line ASM
6:1	99-5000	2	Valve-Check, Fuel
6:2	99-5005	1	Fitting-Tee, Barbed
6:3	1-603770	1	Valve-Fuel
6:4	99-7190	3	Hose-Fuel
6:5	99-3185	2	Hose-Fuel
6:6	106-8720	1	Hose-Fuel
6:7	1-303077	12	Clamp
7	107-2149	1	Control Panel ASM
7:2	107-2148	1	Decal-Panel, Control
9	1-543296	2	Grommet
10	32122-30	4	Screw-Pth
11	1-303435	4	Washer-Spring
20	88-3980	2	Gas Cap ASM
20:3	88-4010	1	Gasket-Cap, Gas
21	1-633023	4	Stud
22	1-633349	4	Spring-Tank, Fuel

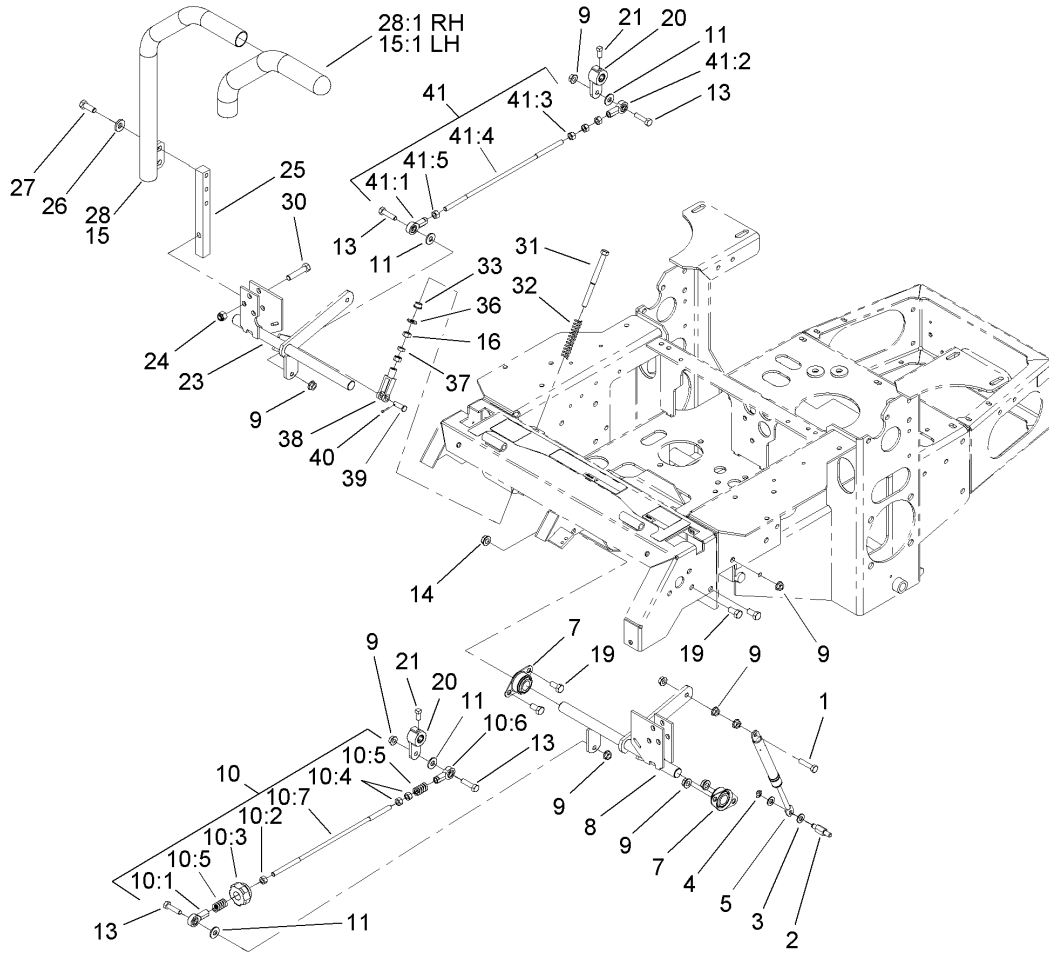
Ref	Part No.	Qty.	Description
23	3296-47	4	Nut-Lock, NI
24	1-513762	4	Clip-Loom
25	321-4	2	Screw-HH
26	32128-33	2	Nut-HF
27	1-513592	1	Knob-Ball
28	1-633696	1	Throttle Cable ASM
29	3296-2	2	Nut-Lock
30	1-603336	1	Control-Choke
31	1-807513	2	Bolt-CARR



Parking Brake Assembly

Ref	Part No.	Qty.	Description
1	103-4695	2	Motor-Wheel
1:1	1-000119	1	Seal Kit
1:2	1-000138	1	Bearing Kit
2	103-4042	8	Spacer-Motor, Wheel
4	3253-7	8	Washer-Lock
5	325-18	8	Screw-HH
7	103-0131	8	Nut-Square
12	1-602997	2	Hub W/studs
13	1-633102	2	Bearing-Flange, Side
14	103-3116	1	Shaft-Brake, Parking
15	1-653074-03	1	Handle-Brake, Park
16	32151-48	1	E-Ring
17	103-3960-03	1	Brake
18	32128-20	4	Nut-HF
19	322-6	1	Screw-HH
20	1-323161	1	Spring-Idler
21	322-9	1	Screw-HH
22	3290-357	8	Nut-HHF
23	98-5975	1	Washer-Belleville
24	323-4	5	Screw-HH
25	1-808285	2	Pin-Clevis
26	3272-10	2	Pin-Cotter
27	1-633268	1	Grip-Lever, Brake
28	323-6	4	Screw-HH

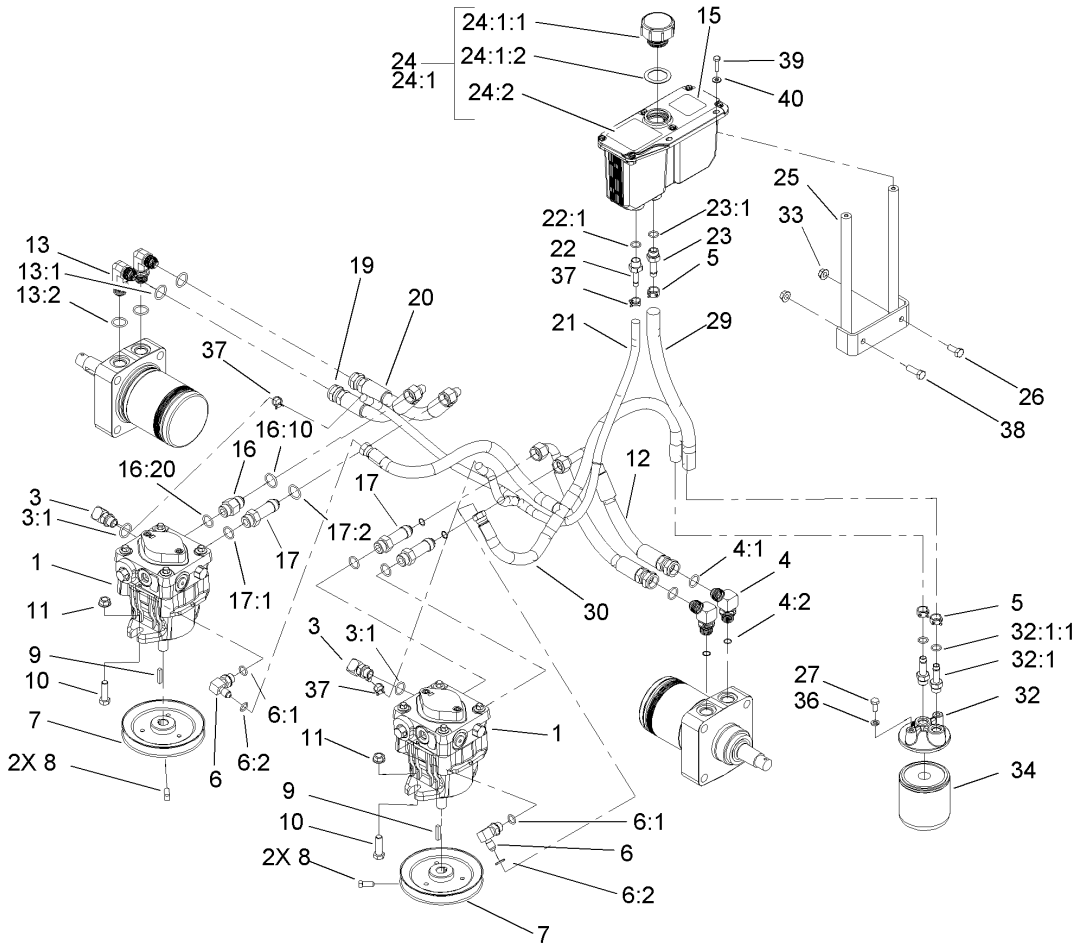
Ref	Part No.	Qty.	Description
29	103-4335	1	Brake Rod ASM
29:1	1-633131	2	Yoke-Linkage, Brake
29:2	103-3907	1	Linkage,brake Handle
29:3	3219-3	2	Nut-Hex
30	32136-5	2	Nut-Hex Slotted
31	1-806800	2	Pin-Cotter
40	103-3978	2	Wheel And Tire ASM
41	242-50	8	Nut-Lug



Motion Control Assembly

Ref	Part No.	Qty.	Description
1	1-403180	2	Screw-HH
2	103-4101	2	Pin-Damper
3	3256-23	4	Washer-Flat
4	32120-35	2	E-Ring
5	103-4079	2	Damper-Control, Motion
7	1-633102	4	Bearing-Flange, Side
8	103-4774	1	Control-Motion, LH
9	32128-20	12	Nut-HF
10	103-4326	1	Tracking Rod ASM
10:1	1-543017	1	Balljoint-RH
10:2	3219-2	1	Nut-Hex
10:3	103-3060	1	Knob-Tracking
10:4	1-804524	2	Nut
10:5	1-323245	2	Spring-Compression
10:6	1-633152	1	Balljoint-Thread, LH
10:7	103-3066	1	Link-Rod, Tracking
11	3256-3	4	Washer-Flat
13	322-6	4	Screw-HH
14	3290-357	6	Nut-HHF
15	103-0631	1	LH Lever ASM
15:1	1-633257	1	Grip-Control, Motion
16	3219-2	4	Nut-Hex
19	323-4	6	Screw-HH
20	103-3717	2	Arm-Control

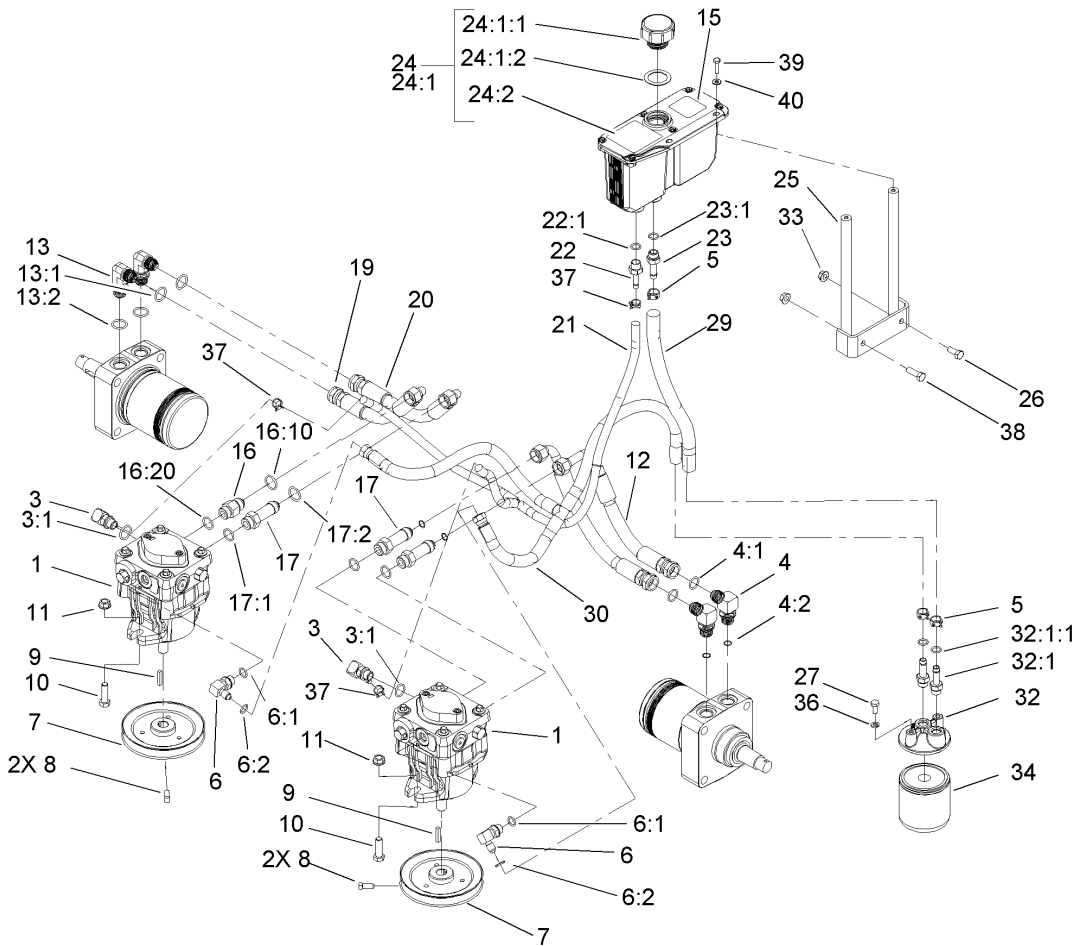
Ref	Part No.	Qty.	Description
21	1-803022	2	Screw-Set
23	103-4773	1	Control-Motion, RH
24	3296-39	6	Nut-Lock, NI
25	103-0407	2	Arm-Shaft, Control
26	98-5975	4	Washer-Belleville
27	323-6	4	Screw-HH
28	103-0632	1	RH Lever ASM
28:1	1-633257	1	Grip-Control, Motion
30	323-9	6	Screw-HH
31	1-603737	2	Bolt-Return, Neutral
32	1-603807	2	Spring-Return, Neutral
33	1-603735	2	Bushing-Flanged
36	3256-2	2	Washer-Flat
37	3220-2	2	Nut-Jam
38	1-303105	2	Yoke-Adjustable
39	1-808280	2	Pin-Clevis
40	3272-5	2	Pin-Cotter
41	103-4327	1	Tracking ASM
41:1	1-543017	1	Balljoint-RH
41:2	1-633152	1	Balljoint-Thread, LH
41:3	1-804524	1	Nut
41:4	103-3066	1	Link-Rod, Tracking
41:5	3219-2	3	Nut-Hex



Hydraulic System Assembly

Ref	Part No.	Qty.	Description
1	103-4040	2	Pump-HYD
3	103-1799	2	Elbow-90 DEG
3:1	237-42	1	O-Ring
4	103-2153	2	Fitting-90 DEG
4:1	1-603920	1	O-Ring
4:2	1-603992	1	O-Ring
5	103-1988	3	Clamp-Hose
6	103-1802	2	Fitting-Hyd, 90 DEG
6:1	1-603921	1	O-Ring
6:2	237-42	1	O-Ring
7	1-653156	2	Pulley
8	1-803050	2	Screw-Set
9	1-807272	2	Key
10	323-7	4	Screw-HH
11	3290-357	5	Nut-HHF
12	103-4022	1	Hose-Lh, Rear
13	103-4797	2	Elbow-90 DEG
13:1	1-603920	1	O-Ring
13:2	1-603992	1	O-Ring
15	103-2644	1	Decal-Exhaust
16	103-4020	1	Adapter-Straight
16:10	1-603920	1	O-Ring
16:20	1-603992	1	O-Ring
17	103-1940	3	Adapter-Hyd, Straight

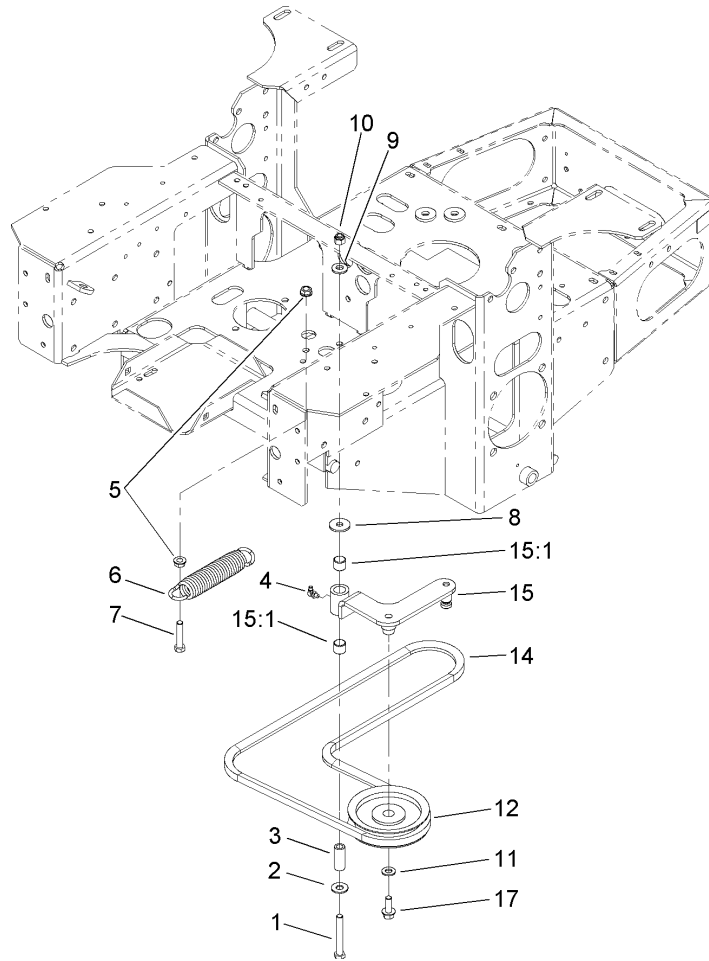
Ref	Part No.	Qty.	Description
17:1	237-79	1	O-Ring
17:2	1-603992	1	O-Ring
19	103-4021	1	Hose-Rh, Rear
20	1-653187	2	Hose-Rear, RH
21	103-2357	1	HYD Hose ASM
22	103-1801	1	Adapter-Straight
22:1	237-42	1	O-Ring
23	103-1912	1	Adapter-Straight
23:1	237-42	1	O-Ring
24	103-1947	1	HYD Reservoir ASM
24:1		1	Reservoir-HYD
24:1:1	103-1948	1	Cap-Reservoir, HYD
24:1:2	103-1949	1	Gasket-Cap
24:2	1-523552	1	Decal-Tank, HYD
25	103-3071-03	1	Stand-Reservoir
26	322-3	1	Screw-HH
27	321-3	2	Screw-HH
29	103-3077	1	HYD Hose ASM
30	103-2930	1	HYD Hose ASM
32	103-2889	1	Filter Head ASM
32:1	103-1912	2	Adapter-Straight
32:1:1	237-42	1	O-Ring
33	32128-20	2	Nut-HF
34	1-633752	1	Filter-Hyd, Winter



Hydraulic System Assembly (continued)

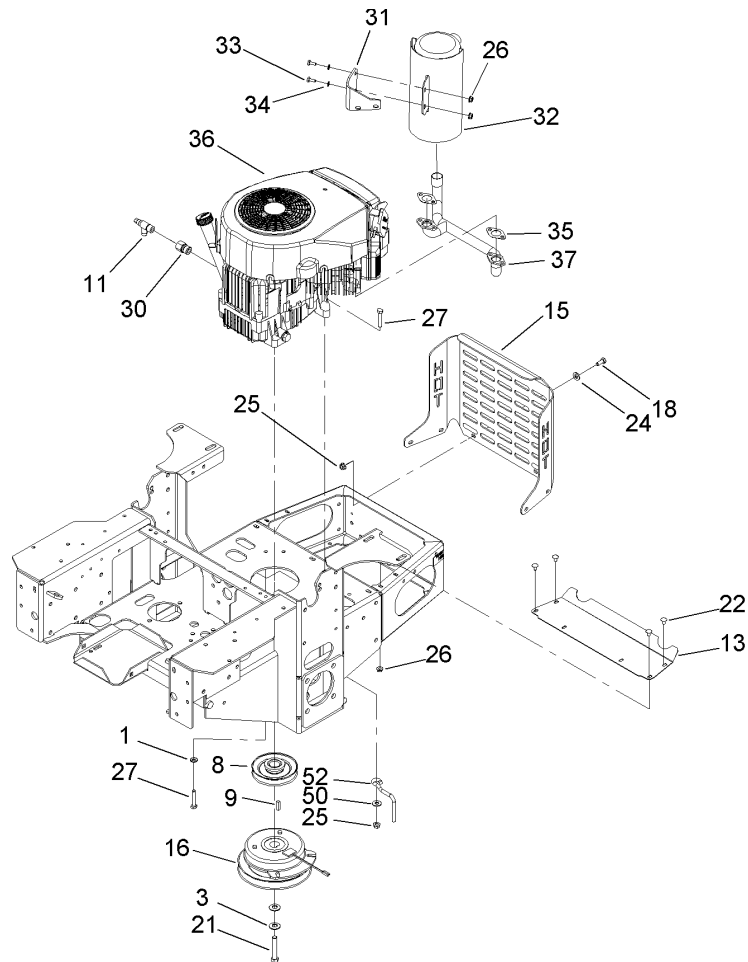
Ref	Part No.	Qty.	Description
34	1-633750	1	Filter-HYD
36	1-805004	2	Washer-Lock
37	103-1716	3	Clamp-Hose
38	322-5	1	Screw-HH
39	321-6	2	Screw-HH
40	3256-22	2	Washer-Flat
99	505-164	76	Benzoil Unifilm 15w-50

--	--	--	--



Pump Idler and Belt Assembly

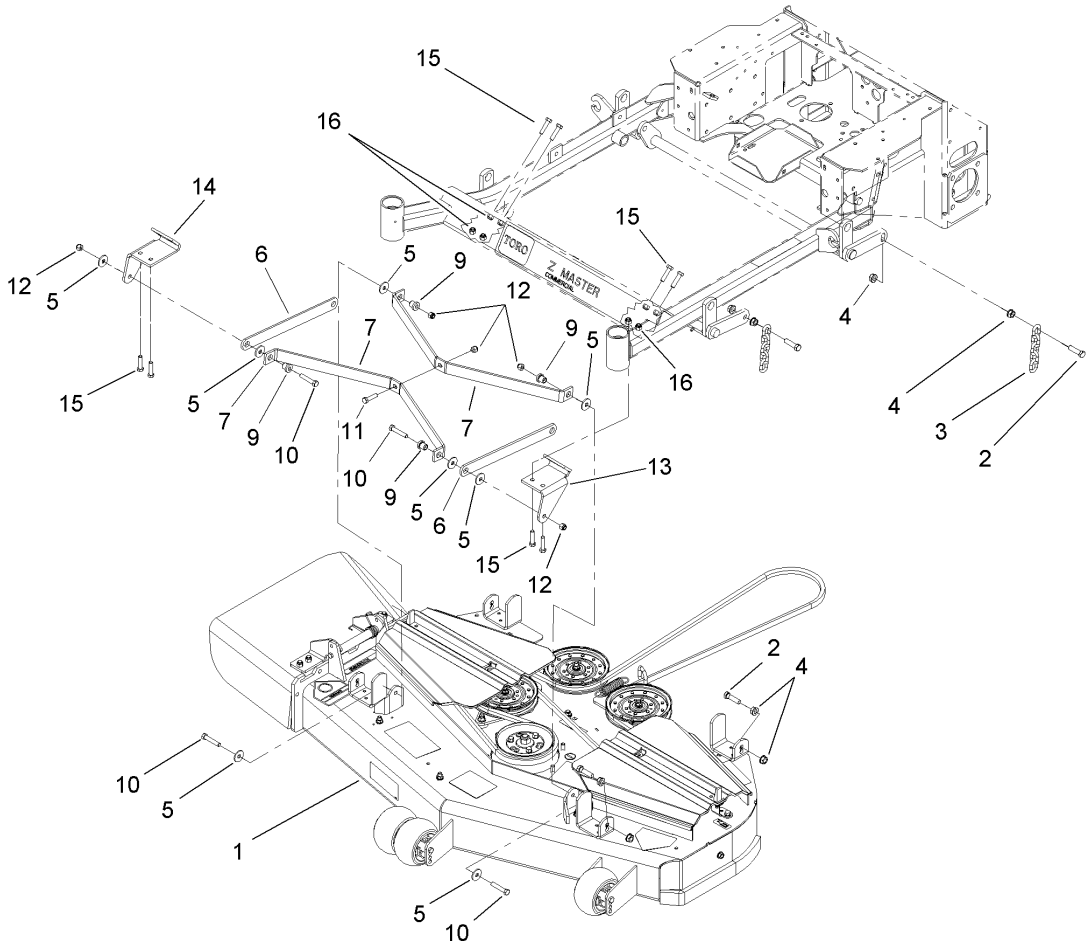
Ref	Part No.	Qty.	Description				
1	323-13	1	Screw-HH				
2	3256-4	1	Washer-Flat				
3	1-603044	1	Bushing				
4	302-40	1	Fitting-Grease				
5	3290-357	2	Nut-HHF				
6	103-4480	1	Spring-Extension				
7	323-9	1	Screw-HH				
8	63-8410	1	Washer				
9	98-5975	1	Washer-Belleville				
10	3296-39	1	Nut-Lock, NI				
11	3256-24	1	Washer-Flat				
12	1-603843	1	Pulley-Idler				
14	107-3959	1	Belt-Cog				
15	103-4482	1	Idler Arm ASM				
15:1	103-4681	2	Sleeve-Bearing				
17	3234-11	1	Screw-HHF				



Engine, Clutch and Muffler Assembly

Ref	Part No.	Qty.	Description
1	1-303334	4	Washer-Spring
3	1-603610	2	Washer-Spring
8	1-653035	1	Pulley
9	1-807259	1	Key
11	103-1965	1	Valve-Drain, Oil
13	103-2740-03	1	Deflector-Short
15	103-4048-03	1	Bumper-Rear
16	104-3624	1	Clutch
18	322-3	6	Screw-HH
21	3212-10	1	Screw-HH
22	3229-10	4	Screw-CARR
24	3256-24	6	Washer-Flat
25	32128-20	11	Nut-HF
26	32128-33	6	Nut-HF
27	322-9	5	Screw-HH
30	103-1966	1	Adapter
31	103-4578-03	1	Bracket-Muffler
32	103-5298	1	Muffler
33	321-3	2	Screw-HH
34	1-303435	2	Washer-Spring
35	1-653290	2	Gasket
36		1	Engine-Kawasaki, Fh580v-As14
37	103-4577	1	Manifold-Exhaust
50	3256-3	1	Washer-Flat

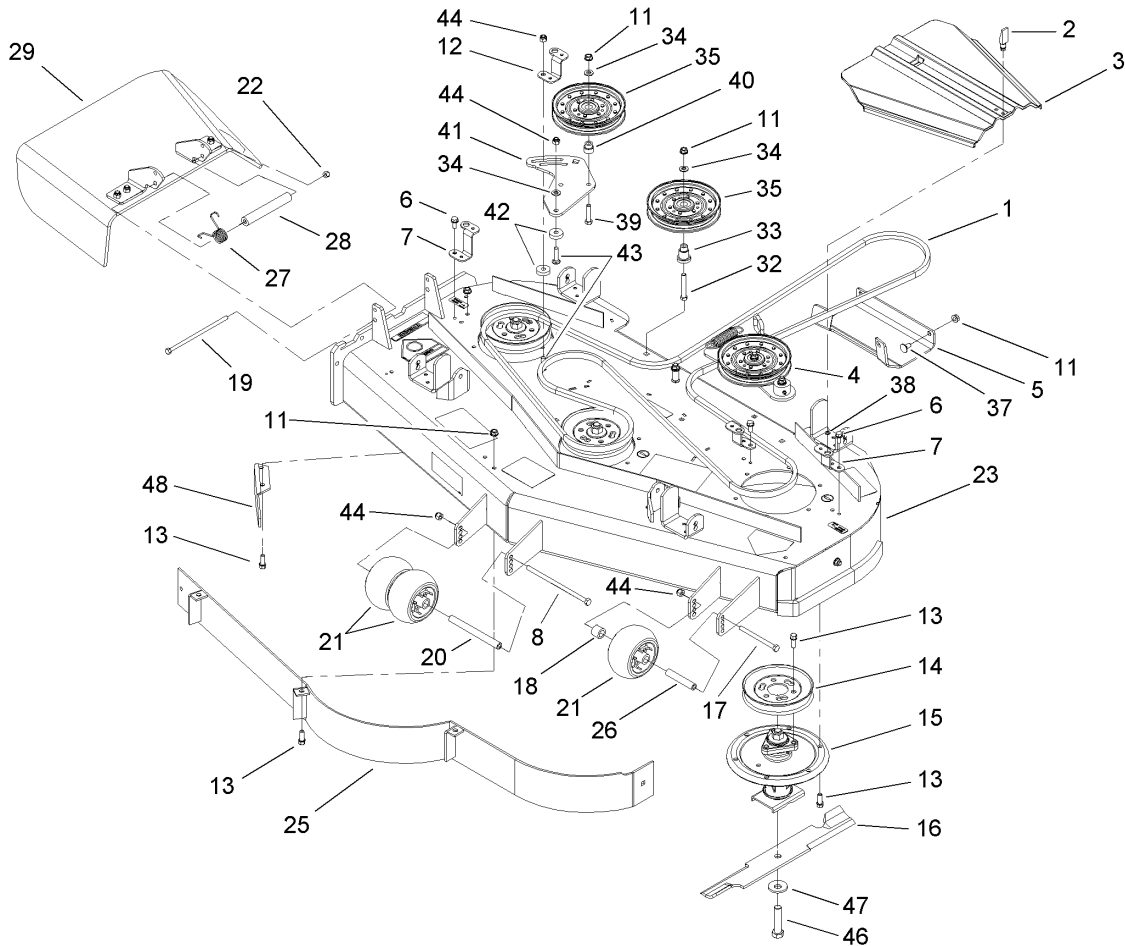
Ref	Part No.	Qty.	Description
52	108-1058	1	Rod-Belt



Deck Mounting Assembly

Ref	Part No.	Qty.	Description
1	107-1694	1	Deck ASM
2	103-1898	8	Screw-HH
3	1-633447	4	Chain-Lift, Deck
4	32128-37	16	Nut-HF
5	63-8410	8	Washer
6	107-1698-01	2	Strut-Flat
7	108-2168-01	2	Brace-Cross
9	65-5950	4	Bushing-Pulley
10	323-10	4	Screw-HH
11	323-8	1	Screw-HH
12	3296-39	6	Nut-Lock, NI
13	108-2164-01	1	Plate-Pull, LH
14	108-2165-01	1	Plate-Pull, RH
15	323-6	8	Screw-HH
16	3290-357	8	Nut-HHF

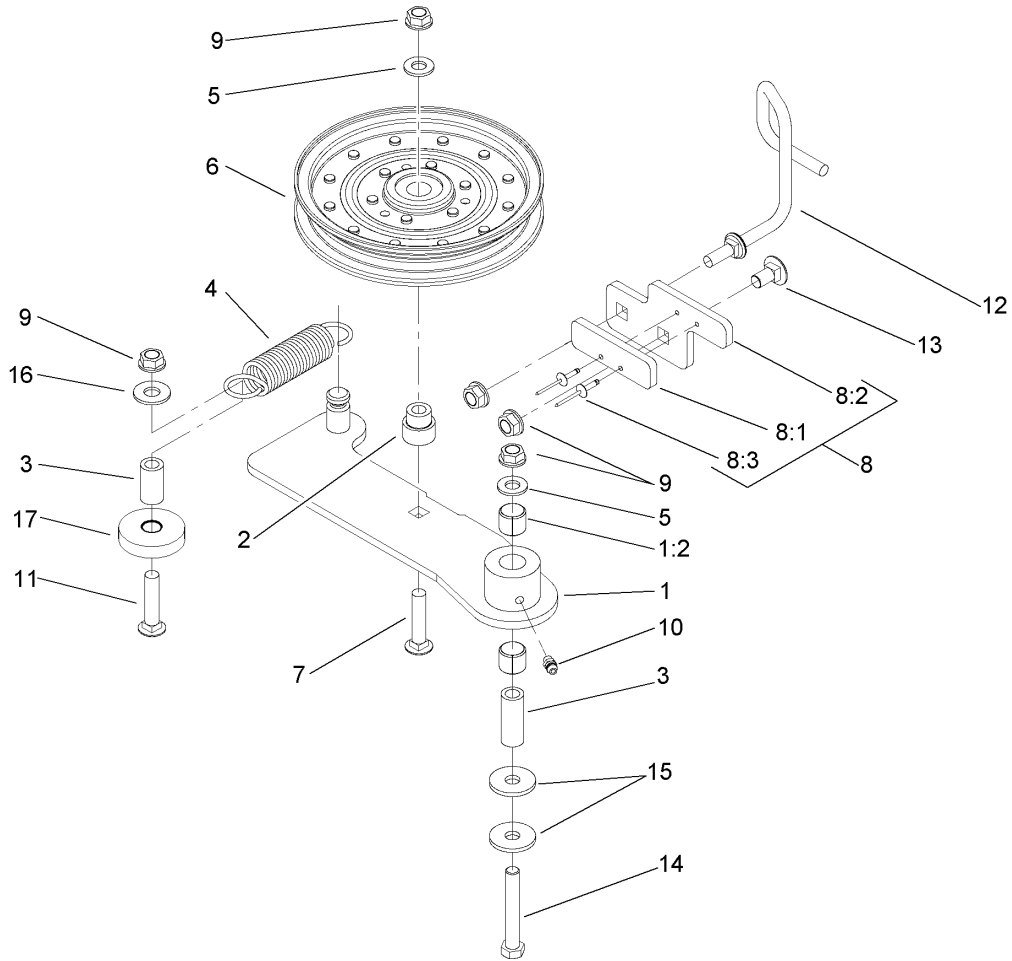
--	--	--	--



Deck Assembly No. 107-1694

Ref	Part No.	Qty.	Description
1	106-7369	1	Belt-V
2	74-5950	2	Latch-Swell
3	107-8536	2	Cover-Belt
4		1	Idler ASM
5	106-7358-01	1	Plate-Skid
6	32144-70	3	Screw-HH
7	108-2177-01	4	Bracket-Cover, Tall
8	323-28	1	Screw-HH
11	3290-357	36	Nut-HHF
12	108-2178-01	1	Bracket-Cover, Short
13	92-1624	32	Screw
14	107-1683	3	Pulley
15	107-8504	3	Spindle ASM
16	105-7781-03	3	Blade-Hi Flow, 18in
17	323-23	1	Screw-HH
18	98-7913	1	Tube-Spacer
19	322-50	1	Screw-HH
20	98-5967	1	Spacer-Wheel
21	1-603299	3	Roller-Anti Scalp
22	3296-29	1	Nut-Lock, NI
23	107-1693	1	Deck Decal ASM
25	108-2185-01	1	Baffle ASM
26	98-7912	1	Tube-Spinner
27	107-1663	1	Spring-Torsion

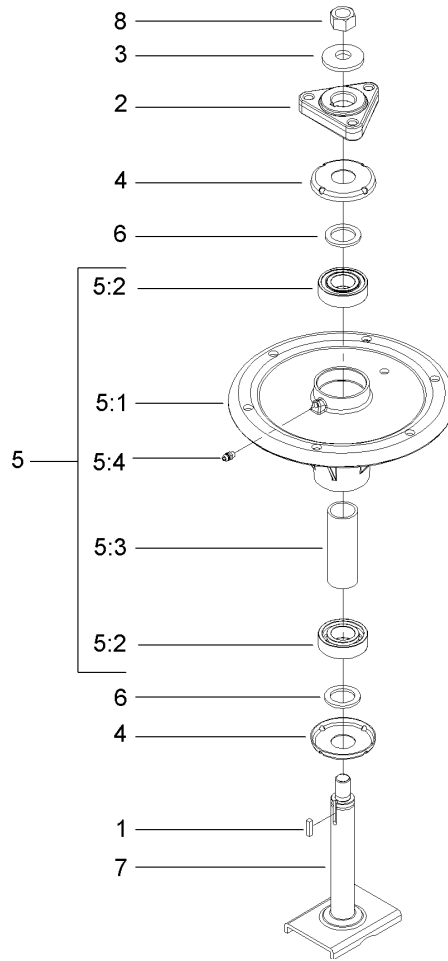
Ref	Part No.	Qty.	Description
28	105-4622	1	Spacer
29	108-4060	1	Rubber Deflector ASM
32	323-12	1	Screw-HH
33	106-3214	1	Mount-Pulley
34	3256-24	3	Washer-Flat
35	1-633109	2	Idler-Flat
37	3231-1	11	Screw-CARR
38	99-3058	2	Washer
39	323-9	1	Screw-HH
40	1-603496	1	Bushing-Idler
41	107-8516-01	1	Plate-Idler
42	105-7788	2	Spacer
43	3231-4	2	Screw-CARR
44	3296-39	4	Nut-Lock, NI
46	103-0862	3	Screw-Cap
47	103-0865	3	Washer-Blade Bolt, Heavy
48	106-3216-01	1	Baffle-Discharge
99	105-7779-03	1	Blade-Recycler
99	105-7794-03	1	Blade-Med Flow
99	105-7795-03	1	Blade-Low Flow
99	105-7796-03	1	Blade-Atomic



Idler Assembly

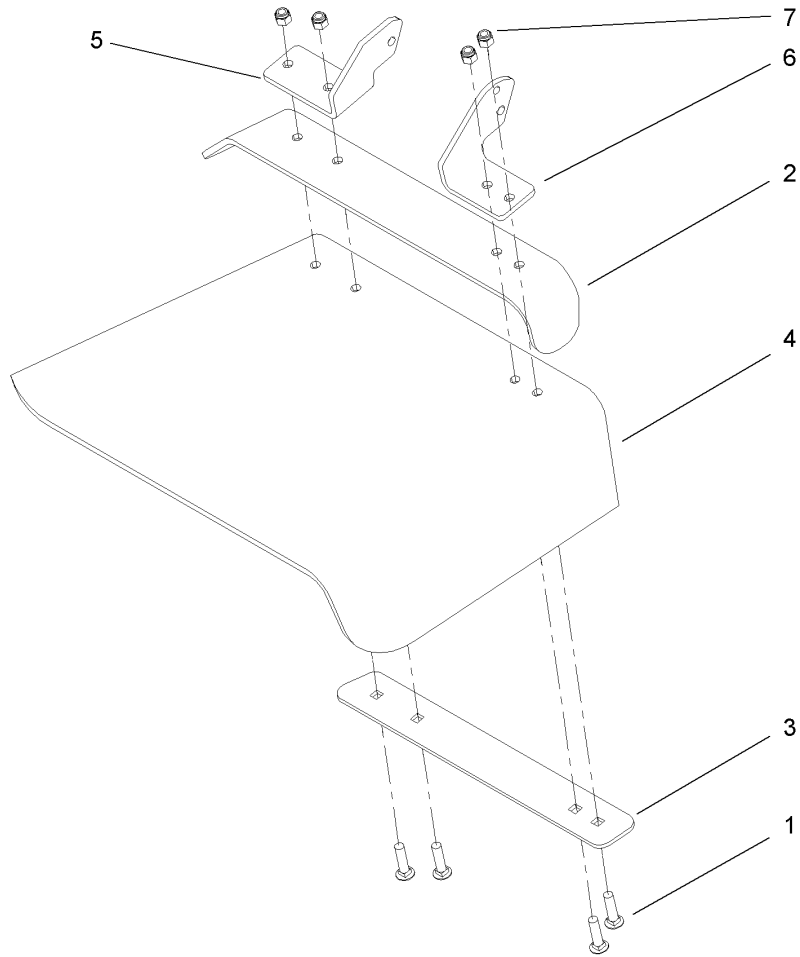
Ref	Part No.	Qty.	Description
1	108-4062	1	Idler Arm ASM
1:2	103-4681	2	Sleeve-Bearing
2	1-603496	1	Bushing-Idler
3	1-603044	2	Bushing
4	1-603402	1	Spring-Extension
5	3256-24	2	Washer-Flat
6	1-633109	1	Idler-Flat
7	3231-6	1	Screw-CARR
8		1	Stop Pad ASM
8:1	106-3229	1	Pad-Bumber
8:2	107-1697-01	1	Plate-Stop
8:3	3269-24	2	Rivet
9	3290-357	5	Nut-HHF
10	302-5	1	Fitting-Grease
11	3231-31	1	Screw-CARR
12	108-4072	1	Guide-Belt
13	3231-1	1	Screw-CARR
14	323-12	1	Screw-HH
15	2844	2	Washer
16	3256-4	1	Washer-Flat
17	108-2239	1	Stop-Plastic

--	--	--	--



Spindle Assembly No. 107-8504

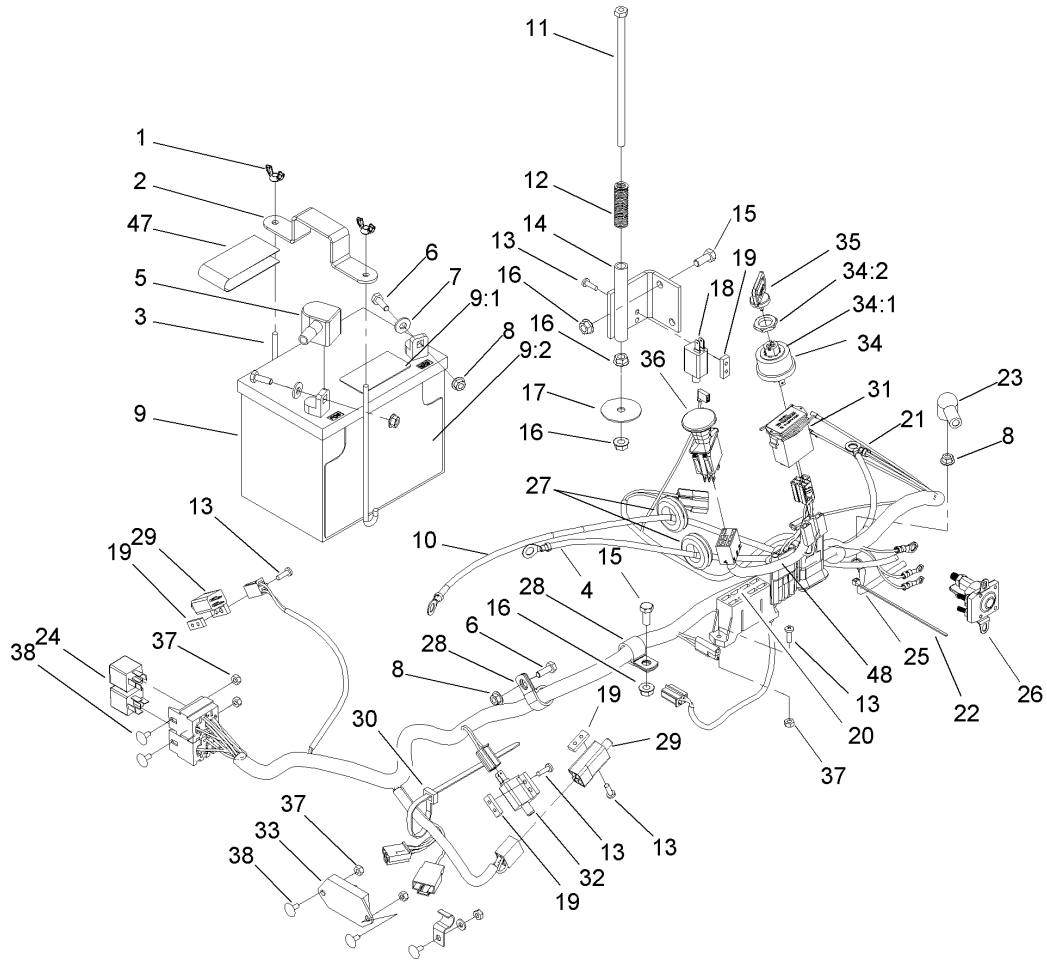
Ref	Part No.	Qty.	Description	
1	10-8040	1	Key-Square	
2	106-3277	1	Hub-Pulley	
3	103-0865	1	Washer-Blade Bolt, Heavy	
4	106-3204	2	Shield-Bearing	
5		1	Spindle Bearing ASM	
5:1	106-3211	1	Housing-Spindle	
5:2	113514	2	Bearing-Ball	
5:3	107-8502	1	Spacer-Bearing	
5:4	302-5	1	Fitting-Grease	
6	3-8514	2	Washer-Thrust	
7	107-8501	1	Spindle ASM	
8	3219-6	1	Nut-Hex	



Rubber Deflector Assembly No. 108-4060

Ref	Part No.	Qty.	Description
1	3231-4	4	Screw-CARR
2	106-3246-01	1	Deflector
3	106-3248-03	1	Strap-Discharge
4	107-1617	1	Deflector-Rubber
5	108-4059-01	1	Plate-Hinge, Rear
6	108-4058-01	1	Plate-Hinge, Front
7	3296-39	4	Nut-Lock, NI

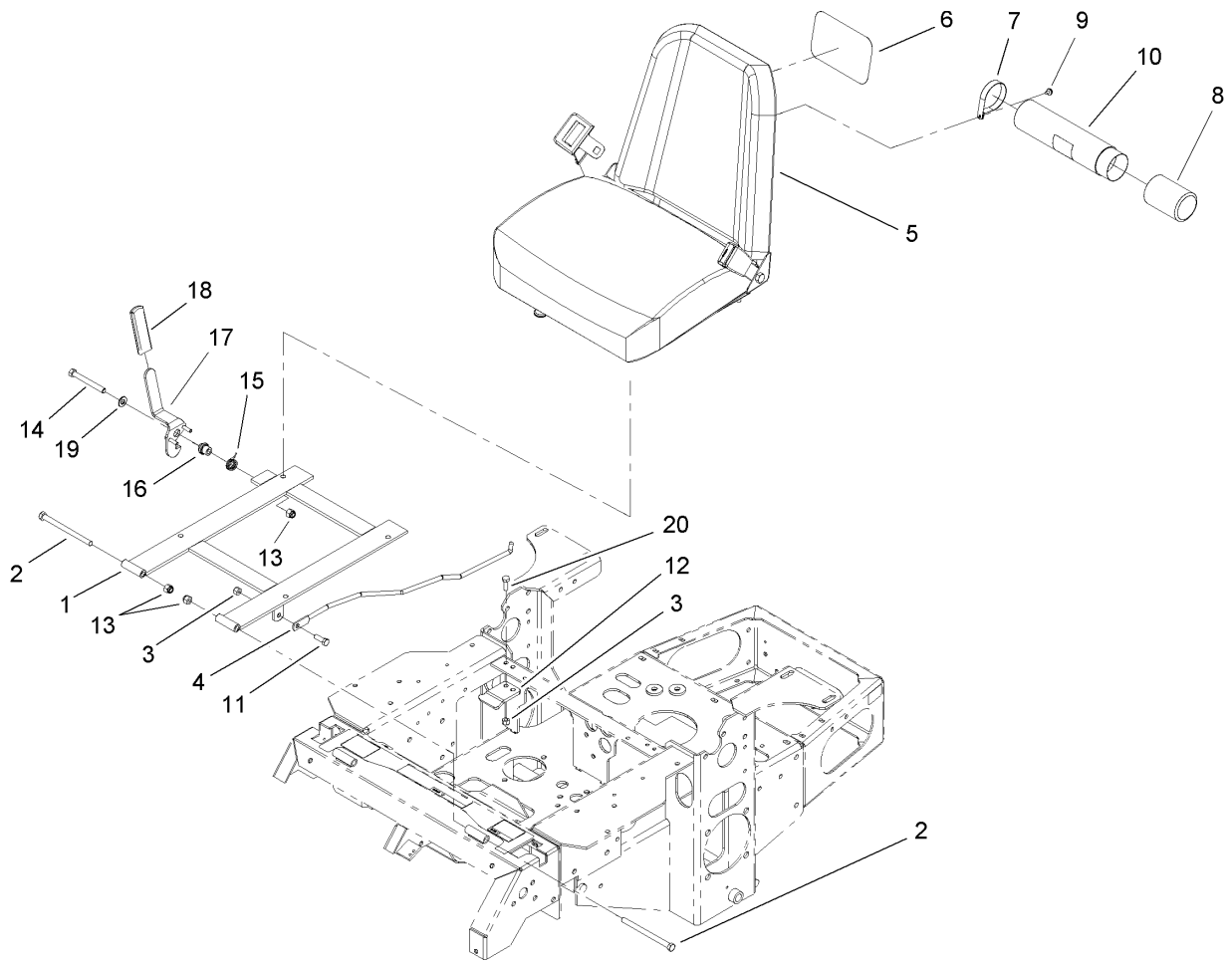
--	--	--	--



Electrical Assembly

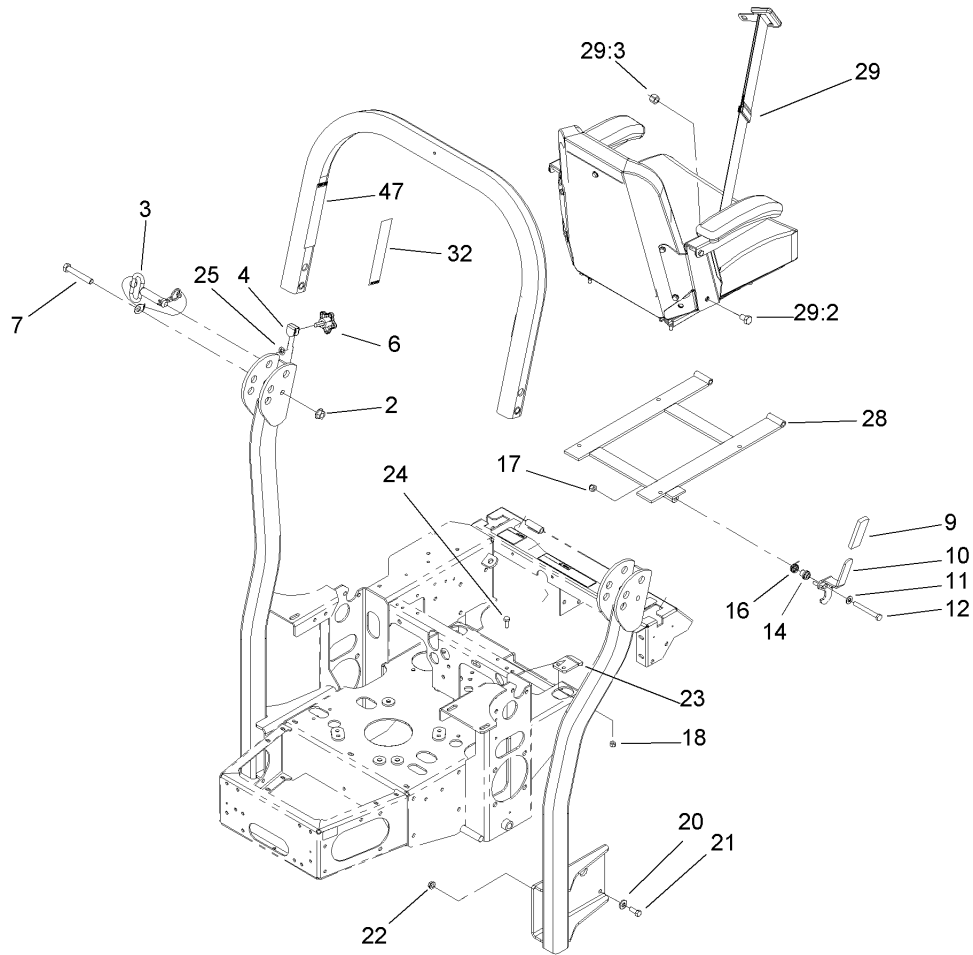
Ref	Part No.	Qty.	Description
1	1-543792	2	Wingnut
2	1-633652-03	1	Strap-Holddown
3	1-633651	2	Bolt-Holddown
4	103-0705	1	Cable-Ground, Negative
5	1-543391	1	Insulator-Battery
6	321-4	5	Screw-HH
7	3256-2	2	Washer-Flat
8	32128-33	6	Nut-HF
9	105-1692	1	Battery
9:1	104-4163	1	Decal-Battery
9:2	104-4164	1	Decal-Battery
10	103-0707	1	Cable-Battery, Positive
11	1-800282	1	Screw-HH
12	1-523415	1	Spring-Switch, Seat
13	1-803075	10	Screw-Head, Truss
14	1-652072-03	1	Bracket-Switch, Seat
15	322-3	3	Screw-HH
16	32128-20	5	Nut-HF
17	1-653036	1	Washer
18	1-513152	1	Switch-Closed, Normally
19	1-633181	4	Plate-Tapped
20	1-816001	2	Fuse-Blade Type, 20 Amp
21	107-8051	1	Harness-Electrical
22	1-303287	4	Tie-Plastic

Ref	Part No.	Qty.	Description
23	1-543393	3	Insulator-Solenoid
24	1-643275	2	Relay
25	1-633306	1	Wire-Starter
26	1-513075	1	Switch-Solenoid
27	1-543286	3	Grommet
28	1-633396	2	Clip-Loom
29	1-513051	2	Switch-Open, Normally
30	1-303335	4	Tie-Plastic
31	1-513374	1	Meter-Hour
32	1-633111	1	Switch
33	100-6186	1	Module-Delay, Seat
34	88-9830	1	Key Switch ASM
34:1	3254-5	1	Washer-Tooth
34:2	218-461	1	Nut-HH
35	63-8360	2	Key-Ignition
36	1-633673	1	Switch-Delta
37	3296-2	6	Nut-Lock
38	1-807513	4	Bolt-CARR
47	107-9309	1	Decal-Instructions, Charging
48	107-8054	1	Harness-Electrical, Control Panel



Seat and Bracket Assembly

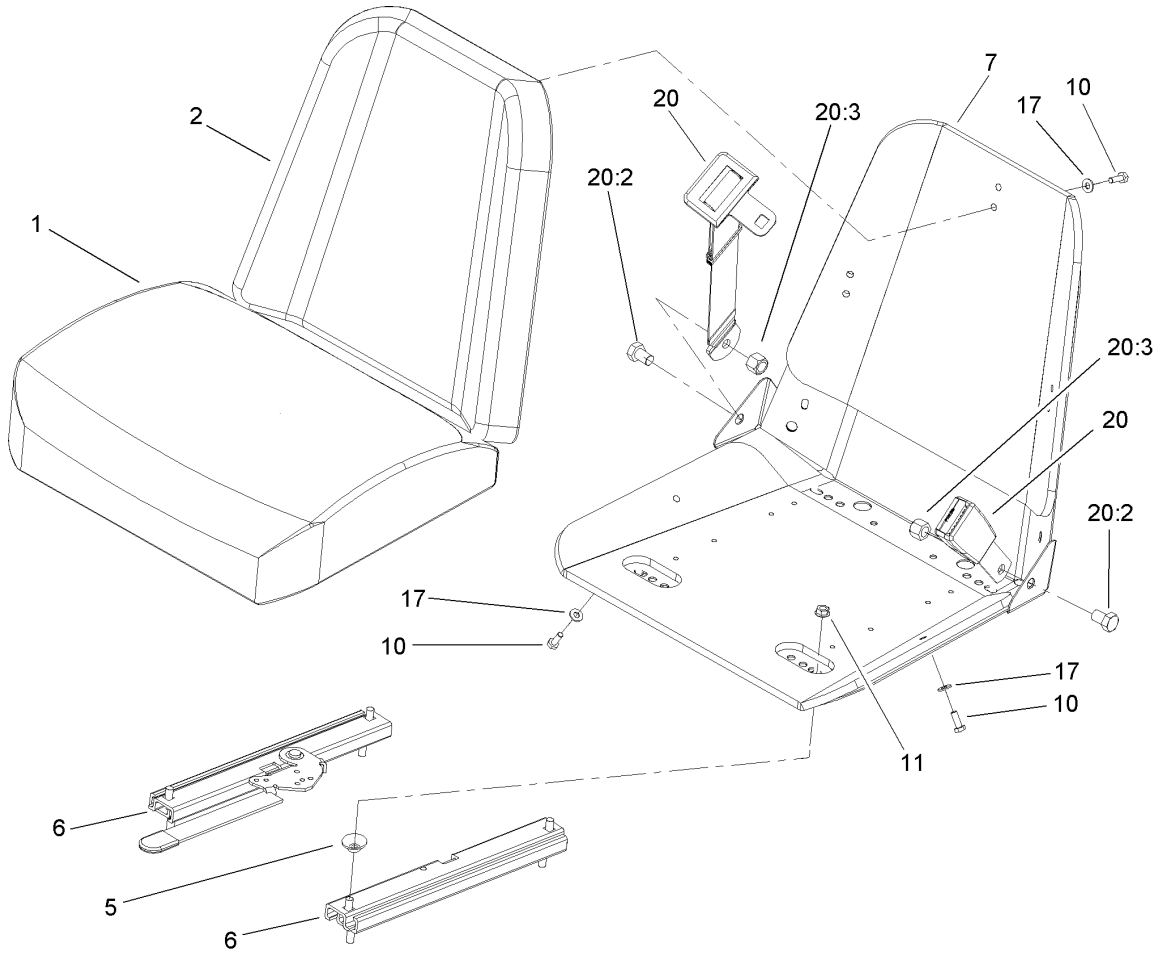
Ref	Part No.	Qty.	Description				
1	107-3052-03	1	Seat Support Frame ASM				
2	323-39	2	Screw-HH				
3	3296-29	3	Nut-Lock, NI				
4	103-1731	1	Rod-Retainer, Seat				
5	107-2116	1	Seat ASM				
6	99-4693	1	Decal				
7	2412-120	2	R-Clamp				
8	104-7048	1	Cap-Housing				
9	32104-76	2	Screw				
10	104-7050	1	Housing-Manual				
11	322-5	1	Screw-HH				
12	103-5961	1	Catch-Latch, Seat				
13	3296-39	3	Nut-Lock, NI				
14	323-20	1	Screw-HH				
15	107-0076	1	Spring-Torsion				
16	107-0075	1	Bushing-Latch, Seat				
17	107-3083	1	Latch ASM				
18	62-9130	1	Grip-Handle				
19	3256-24	1	Washer-Flat				
20	322-4	2	Screw-HH				



Roll-Over-Protection-System Assembly No. 107-8093

Ref	Part No.	Qty.	Description
2	32128-23	2	Nut-HF
3	103-4553	2	Rops Fold Pin ASM
4	107-3124	2	Clip
6	106-0887	2	Knob
7	325-13	2	Screw-HH
9	62-9130	1	Grip-Handle
10	107-3083	1	Latch ASM
11	3256-24	1	Washer-Flat
12	323-20	1	Screw-HH
14	107-0075	1	Bushing-Latch, Seat
16	107-0076	1	Spring-Torsion
17	3296-39	1	Nut-Lock, NI
18	3296-29	2	Nut-Lock, NI
20	98-5975	8	Washer-Belleville
21	323-6	8	Screw-HH
22	3290-357	8	Nut-HHF
23	107-3059	1	Catch-Latch, Seat
24	322-4	2	Screw-HH
25	107-3154	2	Nut-Push
28	107-3052-03	1	Seat Support Frame ASM
29	103-4469	1	Seatbelt Kit
29:2	3212-4	2	Screw-HH
29:3	3296-38	2	Nut-Lock NI
32	107-3069	1	Decal-Warning, Folding Rops

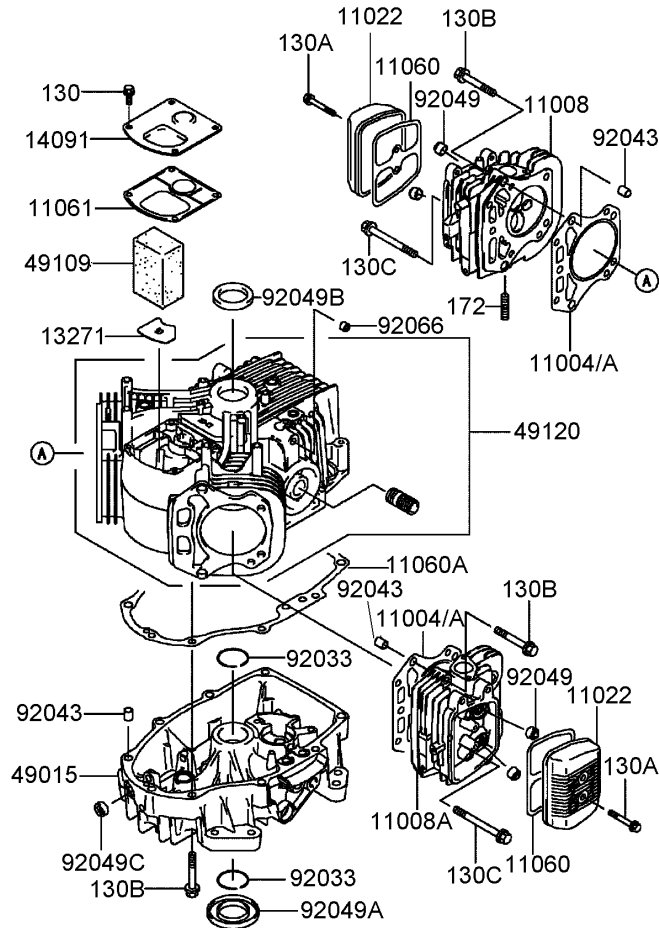
Ref	Part No.	Qty.	Description
47	107-2102	1	Decal-Warning, Folding Rops



Seat Assembly No. 107-2116

Ref	Part No.	Qty.	Description
1	103-0290	1	Cushion-Seat, Bottom
2	104-7754	1	Cushion-Seat, Back
5	1-543401	4	Spacer-Track
6	1-643255	1	Track-Seat
7	1-633859	1	Frame-Seat
10	321-4	5	Screw-HH
11	32128-20	4	Nut-HF
17	3256-22	5	Washer-Flat
20	103-4469	1	Seatbelt Kit
20:2	3212-4	2	Screw-HH
20:3	3296-38	2	Nut-Lock NI

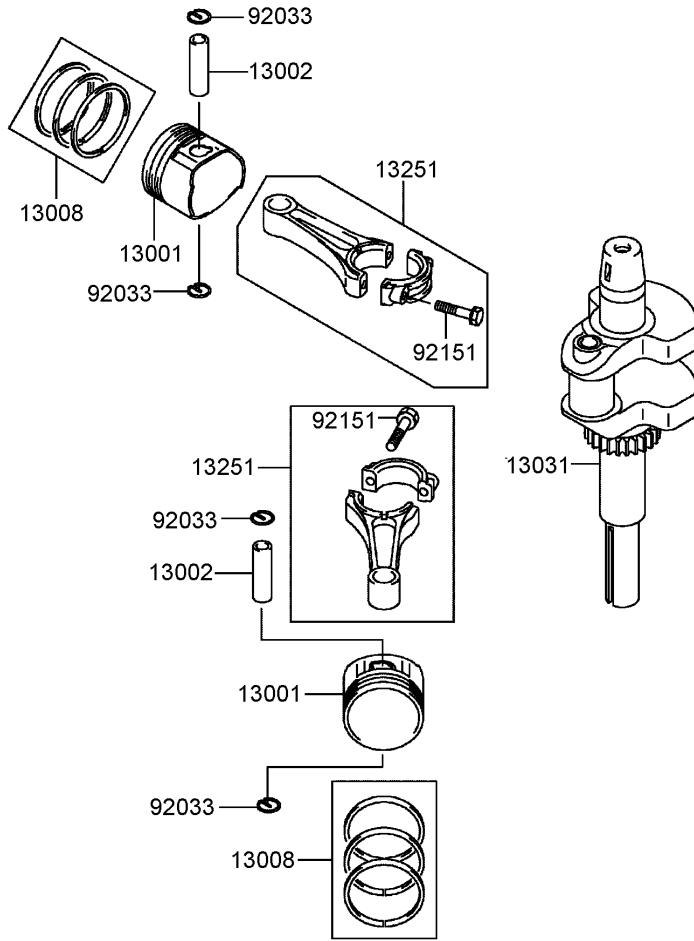
--	--	--	--



Cylinder and Crankcase Assembly Kawasaki FH580V-AS14

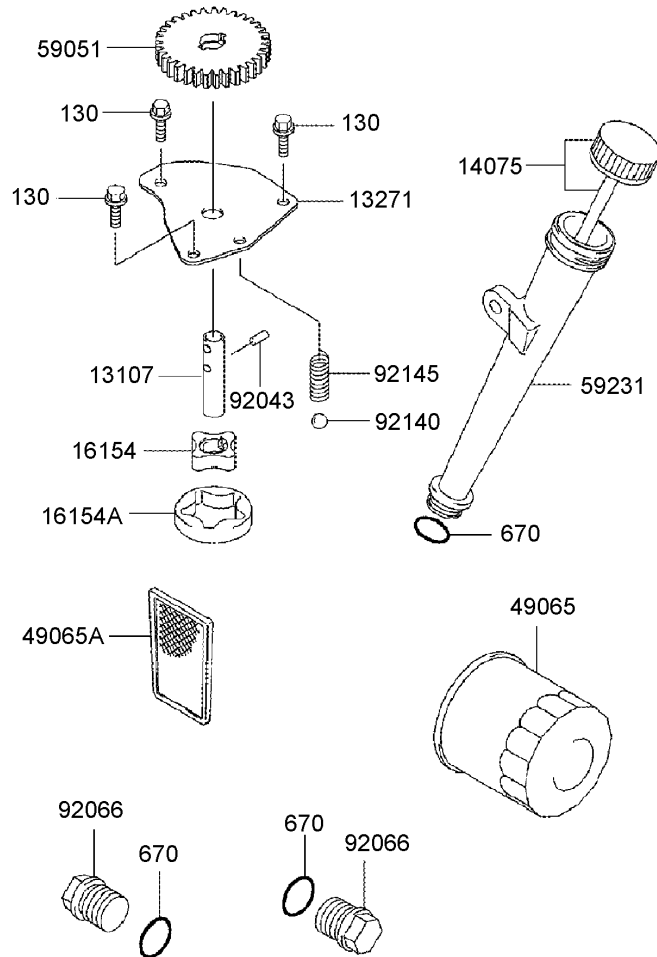
Ref	Part No.	Qty.	Description
●11004	11004-7010	1	Gasket-Head
●11004A	11004-7016	2	Gasket-Head
●11008	11008-6043	1	Head-Cylinder, No. 1
●11008A	11008-7020	1	Head-Cylinder, No. 2
●11022	11022-7003	2	Case-Rocker
●11060	11060-7001	2	Gasket-Case, Rocker
●11060A	11060-7008	1	Gasket-Cover, Crankcase
●11061	11061-7001	1	Gasket-Breather
●13271	13271-7016	1	Plate
●14091	14091-7006	1	Cover
●49015	49015-6253	1	Cover-Crankcase
●49109	49109-7002	1	Element-Breather
●49120	49120-7023	1	Crankcase-Comp
●92033	92033-7003	2	Ring-Snap
●92043	92043-7001	6	Pin
●92049	92049-7001	4	Seal-Oil, Rvc2 (6x11x10.2)
●92049A	92049-7015	1	Seal-Oil, Sd (35x62x8 L Hs)
●92049B	92049-7016	1	Seal-Oil, Sd (35x48x8 R Hs)
●92049C	92049-7019	1	Seal-Oil, So (8x14x5 Hs)
●92066	92066-7002	1	Plug
●130	130B0612	4	Bolt-Flanged
●130A	130B0640	4	Bolt-Flanged
●130B	130T0850	17	Bolt-Flanged
●130C	130T0875	2	Bolt-Flanged

Ref	Part No.	Qty.	Description
●172	172G0818	4	Bolt-Stud



Piston/Crankshaft Assembly Kawasaki FH580V-AS14

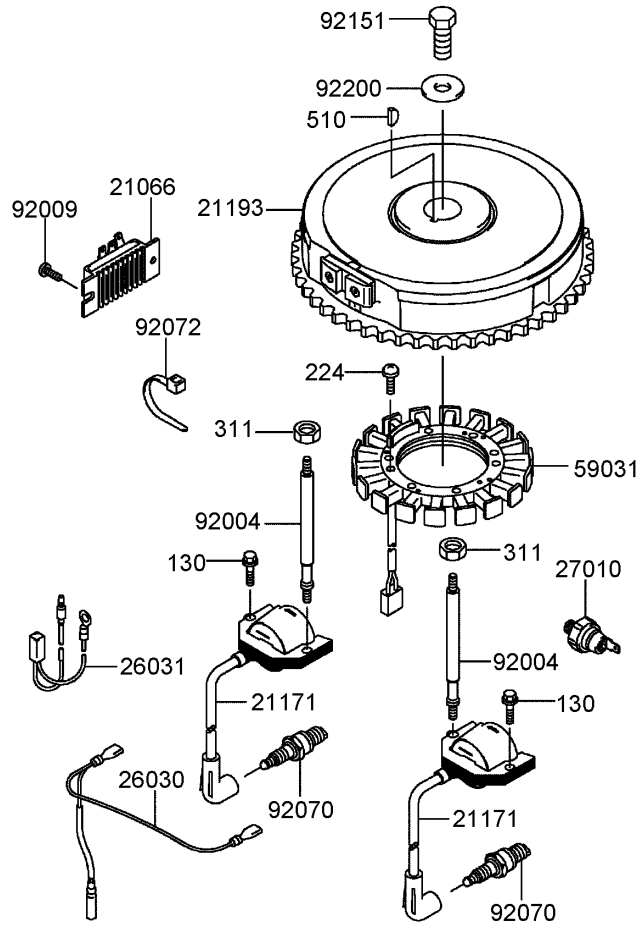
Ref	Part No.	Qty.	Description				
①13001	13001-7010	2	Piston-Engine				
①13002	13002-7001	2	Pin-Piston				
①13008	13008-6060	2	Piston Ring Set				
①13031	13031-7036	1	Crankshaft-Comp				
①13251	13251-7010	2	Connecting Rod ASM				
①92033	92033-7005	4	Ring-Snap				
①92151	92151-7017	4	Bolt (6x35)				



Lubrication Equipment Assembly Kawasaki FH580V-AS14

Ref	Part No.	Qty.	Description
⑤13107	13107-7009	1	Shaft
⑤13271	13271-7017	1	Plate
⑤14075	14075-7009	1	Cap ASM
⑤16154	16154-2053	1	Rotor-Pump (In)
⑤16154A	16154-2054	1	Rotor-Pump (Out)
⑤49065	49065-2078	1	Filter-Oil
⑤49065A	49065-7004	1	Filter-Oil
⑤59051	59051-7011	1	Gear-Spur
⑤59231	59231-7005	1	Filler
⑤92043	92043-7003	2	Pin
⑤92066	92066-7003	2	Plug
⑤92140	92140-7003	1	Ball
⑤92145	92145-7002	1	Spring
⑤130	130B0612	3	Bolt-Flanged
⑤670	670D2016	3	O-Ring (16mm)

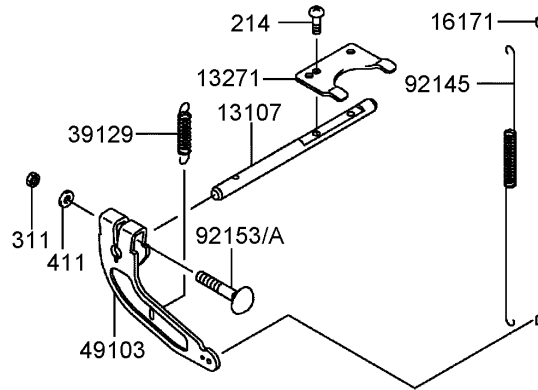
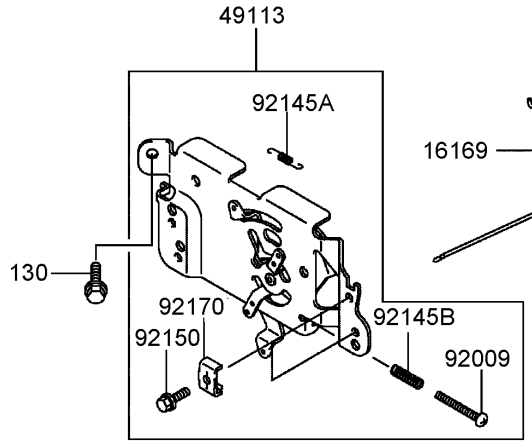
--	--	--	--



Electrical Equipment Assembly Kawasaki FH580V-AS14

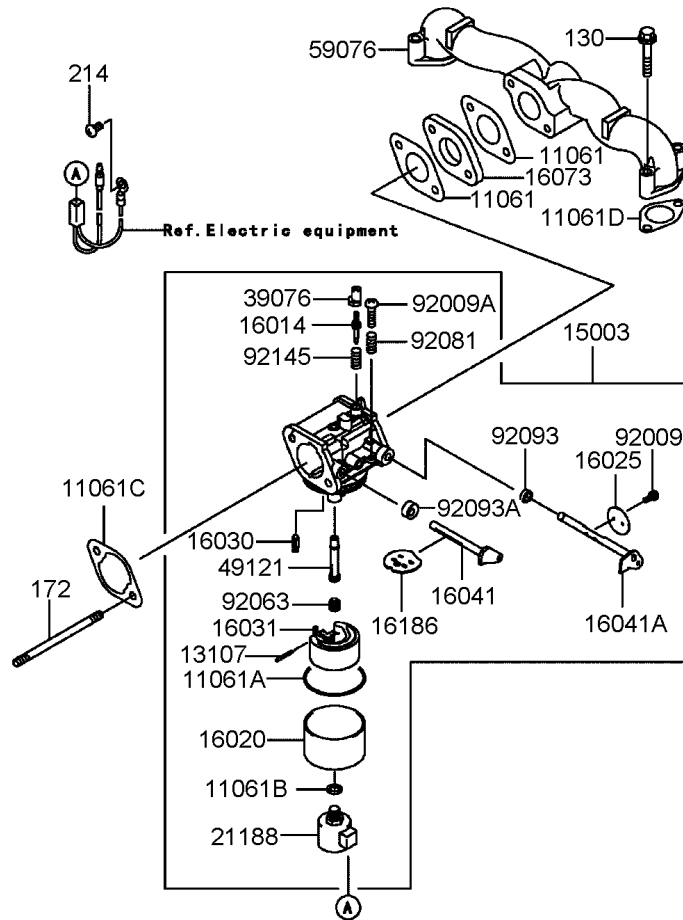
Ref	Part No.	Qty.	Description
⑤21066	21066-7011	1	Regulator-Voltage
⑤21171	21171-7013	2	Ignition Coil ASM
⑤21193	21193-7007	1	Flywheel ASM
⑤26030	26030-7001	1	Harness
⑤26031	26031-7002	1	Harness
⑤27010	27010-7001	1	Switch
⑤59031	59031-7001	1	Coil-Charging
⑤92004	92004-7009	2	Stud
⑤92009	92009-2308	1	Screw
⑤92070	92070-7003	2	Plug-Spark (Rcj8y, Solid)
⑤92072	92072-7003	2	Band
⑤92151	92151-2097	1	Bolt (12x30)
⑤92200	92200-7002	1	Washer
⑤130	130B0620	2	Bolt-Flanged
⑤224	224B0520	4	Screw-Pan
⑤311	311B0600	2	Nut-Hex
⑤510	510A5100	1	Key-Woodruff

--	--	--	--



Control Equipment Assembly Kawasaki FH580V-AS14

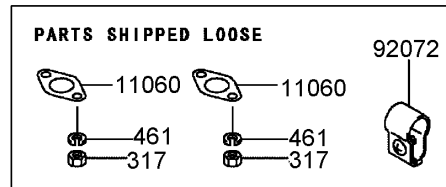
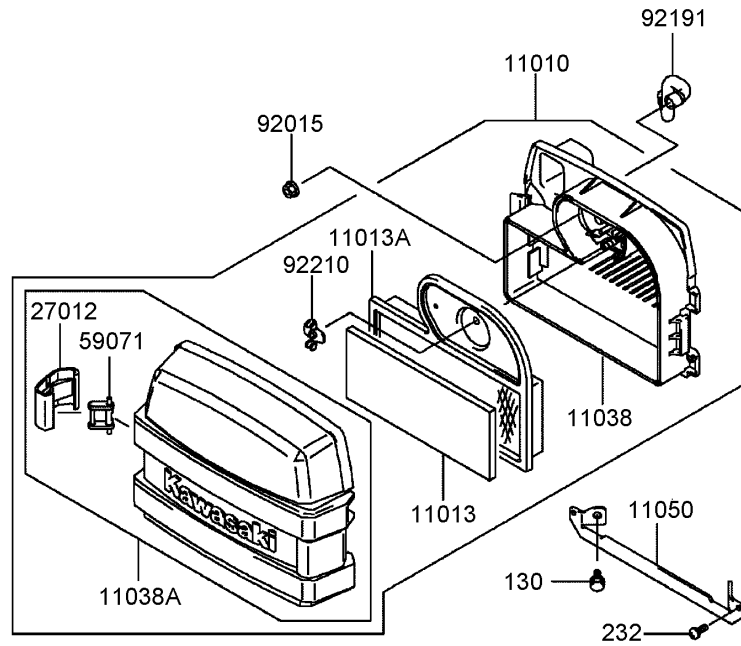
Ref	Part No.	Qty.	Description				
①13107	13107-7010	1	Shaft				
①13271	13271-7018	1	Plate				
①16169	16169-7010	1	Link-Choke				
①16171	16171-7001	1	Link				
①39129	39129-7003	1	Spring-Governor				
①49103	49103-7004	1	Arm-Governor				
①49113	49113-7011	1	Panel-Control				
①92009	92009-7007	1	Screw (4x35)				
①92145	92145-7003	1	Spring				
①92145A	92145-7004	1	Spring				
①92145B	92145-7005	1	Spring				
①92150	92150-2182	2	Bolt (5x18)				
①92153	92153-7005	1	Bolt,6x35				
①92153A	92153-7033	1	Bolt (6x35)				
①92170	92170-7001	2	Clamp				
①130	130B0612	2	Bolt-Flanged				
①214	214B0408	2	Screw-Pan				
①311	311B0600	1	Nut-Hex				
①411	411b0600	1	Washer-Plain				



Carburetor Assembly Kawasaki FH580V-AS14

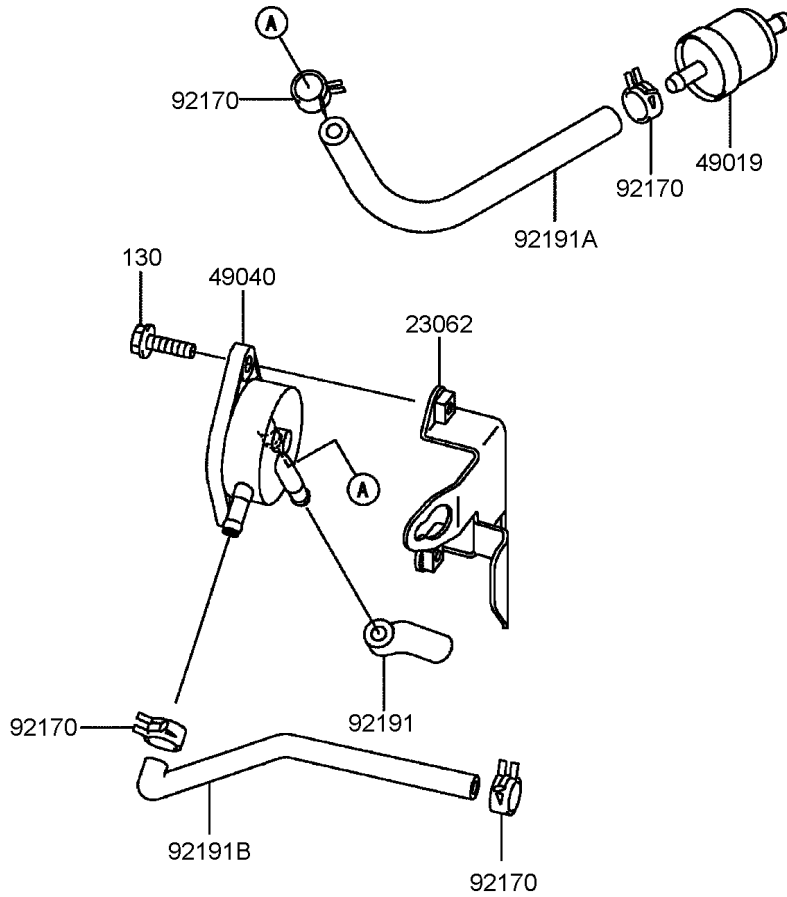
Ref	Part No.	Qty.	Description
⑤11061	11061-7004	2	Gasket-Insulator
⑤11061A	11061-7009	1	Gasket-Chamber
⑤11061B	11061-7010	1	Gasket-Screw
⑤11061C	11061-7018	1	Gasket-Cleaner, Air
⑤11061D	11061-7019	2	Gasket
⑤13107	13107-7018	1	Shaft
⑤15003	15003-7081	1	Carburetor-Assy
⑤16014	16014-7004	1	Screw-Pilot Air
⑤16020	16020-7003	1	Chamber-Float
⑤16025	16025-7006	1	Valve-Throttle
⑤16030	16030-7003	1	Valve-Float
⑤16031	16031-7002	1	Float
⑤16041	16041-7016	1	Shaft-Carburetor, Choke
⑤16041A	16041-7018	1	Shaft-Carburetor, Throttle
⑤16073	16073-7007	1	Insulator
⑤16186	16186-7004	1	Choke Valve ASM
⑤21188	21188-7002	1	Solenoid
⑤39076	39076-7001	1	Limiter
⑤49121	49121-7004	1	Nozzle-Main
⑤59076	59076-7001	1	Manifold-Intake
⑤92009	92009-2083	2	Screw
⑤92009A	92009-2349	1	Screw
⑤92063	92063-7037	1	Jet-Main, #105
⑤92081	92081-2234	1	Spring

Ref	Part No.	Qty.	Description
⑤92093	92093-2100	1	Seal
⑤92093A	92093-7003	1	Seal
⑤92145	92145-7015	1	Spring
⑤130	130B0635	4	Bolt-Flanged
⑤172	172G0685	2	Bolt-Stud
⑤214	214B0510	1	Screw-Pan



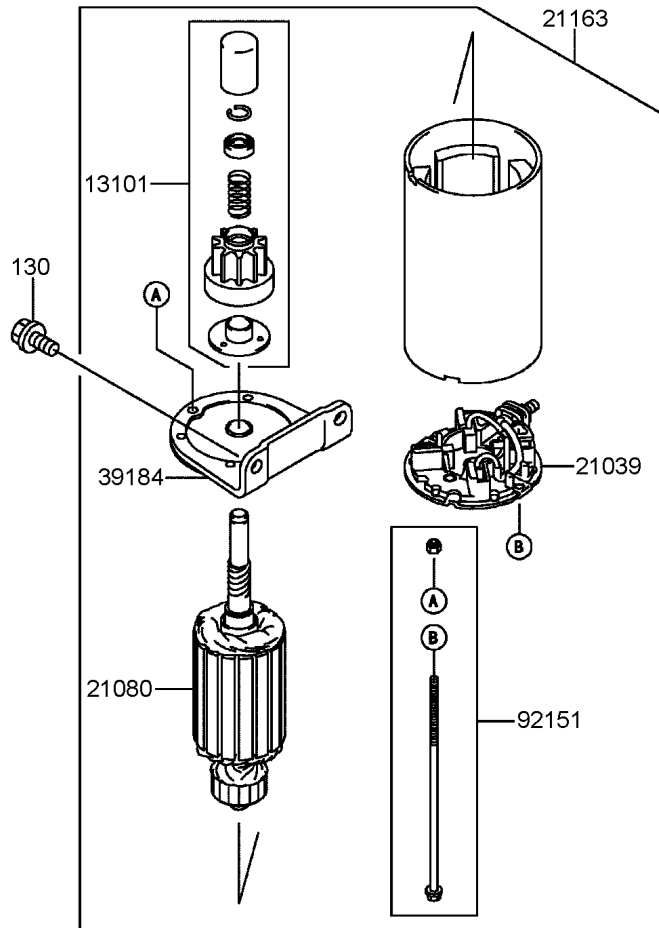
Air Filter and Muffler Assembly Kawasaki FH580V-AS14

Ref	Part No.	Qty.	Description				
①	11010	1	Filter-Assy-Air				
①	11013	1	Element-Air Filter				
①	11013A	1	Element-Air Filter				
①	11038	1	Case-Assy-Air Filter				
①	11038A	1	Case-Assy-Air Filter				
①	11050	1	Bracket				
②	11060	2	Gasket-Muffler				
②	27012	2	Hook,air Filter				
②	59071	2	Joint				
②	92015	2	Nut				
①	92072	1	Band				
①	92191	1	Tube				
①	92210	1	Nut				
②	130	2	Bolt-Flanged				
②	232	2	Screw-Pan-Ws				
④	317	4	Nut-Hex, Small				
④	461	4	Washer-Spring				



Fuel Tank and Valve Assembly Kawasaki FH580V-AS14

Ref	Part No.	Qty.	Description				
③23062	23062-7004-9H	1	Bracket-Comp				
③49019	49019-7001	1	Filter-Fuel				
③49040	49040-7001	1	Pump-Fuel				
③92170	92170-2088	4	Clamp				
③92191	92191-7002	1	Tube				
③92191A	92191-7003	1	Tube (6.35x12.7x160)				
③92191B	92191-7004	1	Tube				
③130	130B0620	2	Bolt-Flanged				



Starter Assembly Kawasaki FH580V-AS14

Ref	Part No.	Qty.	Description
13101	13101-7003	1	Gear ASM
21039	21039-7004	1	Brush
21080	21080-7001	1	Armature
21163	21163-7010	1	Starter-Electric
39184	39184-7004	1	Bracket ASM
92151	92151-7013	1	Bolt
130	130B0816	2	Bolt-Flanged

