



## Front Blade Kit

Model No. 08821 - 200000001 and up.

## Parts Catalog

### Ordering Replacement Parts

To order replacement parts, please supply the part number, the quantity, and the description of each part desired.

### Understanding Reference Numbers

Each Identified part in an illustration has a reference number. The reference number for a part also appears in the parts list, along with other information about the part.

This catalog uses two special reference number formats, one to indicate parts in a service assembly and another to indicate the quantity of a given part in an illustration.

### Service Assembly Reference Numbers

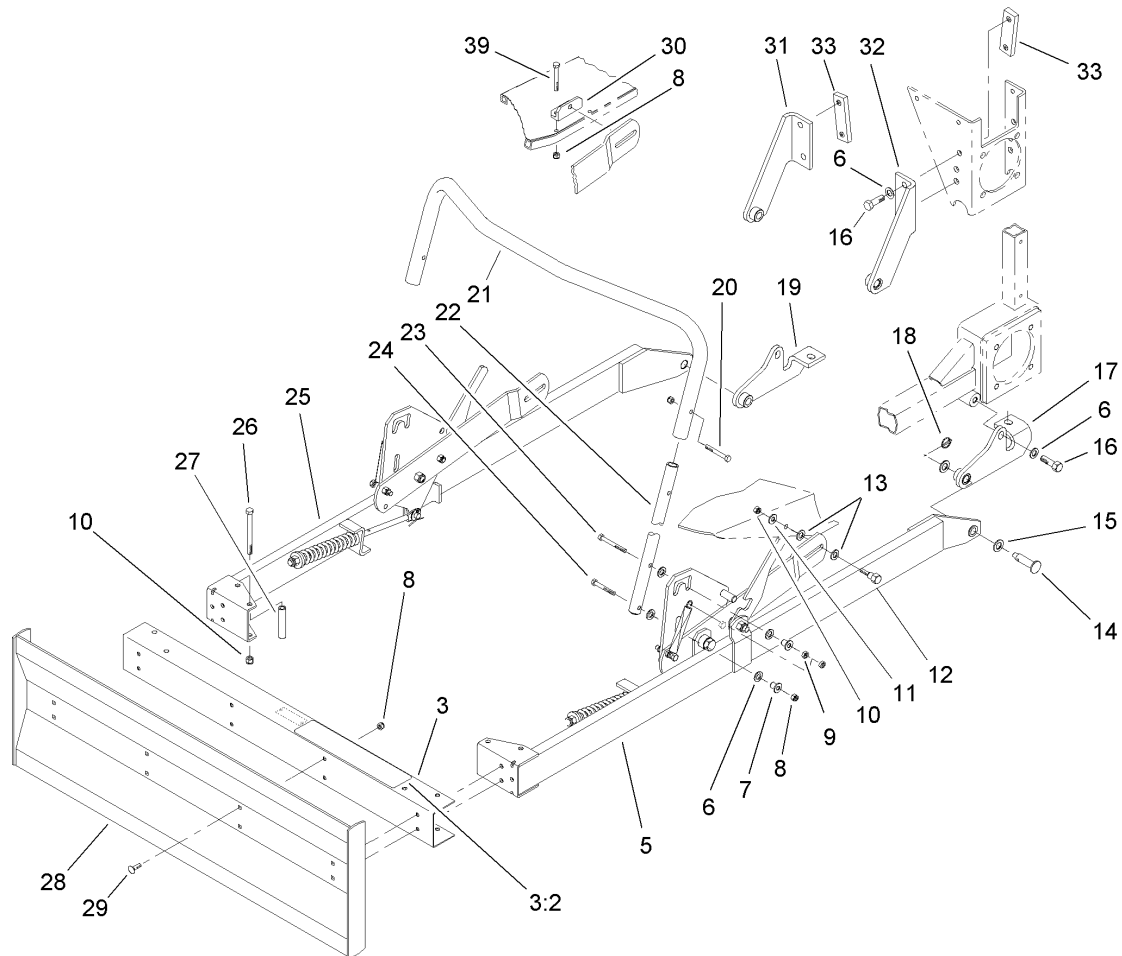
Parts in service assemblies have reference numbers in the form a:b. The a represents the reference number of the entire service assembly and the b represents a sequential number unique to each part within the service assembly.

For example, a wheel assembly might be identified by reference number 6, the tire by 6:1, the valve by 6:2, and the wheel by 6:3. When you order the assembly identified by reference number 6, you receive all parts identified by reference numbers 6:1, 6:2, and 6:3. However, you may also order any part individually. Reference numbers of this type appear in illustrations and in part lists.

### Reference Numbers Indicating Quantity

In an illustration, if a reference number indicates more than one part, the reference number has the form nX y. The n represents the quantity of the part, the X is the multiplication symbol, and the y represents the reference number.

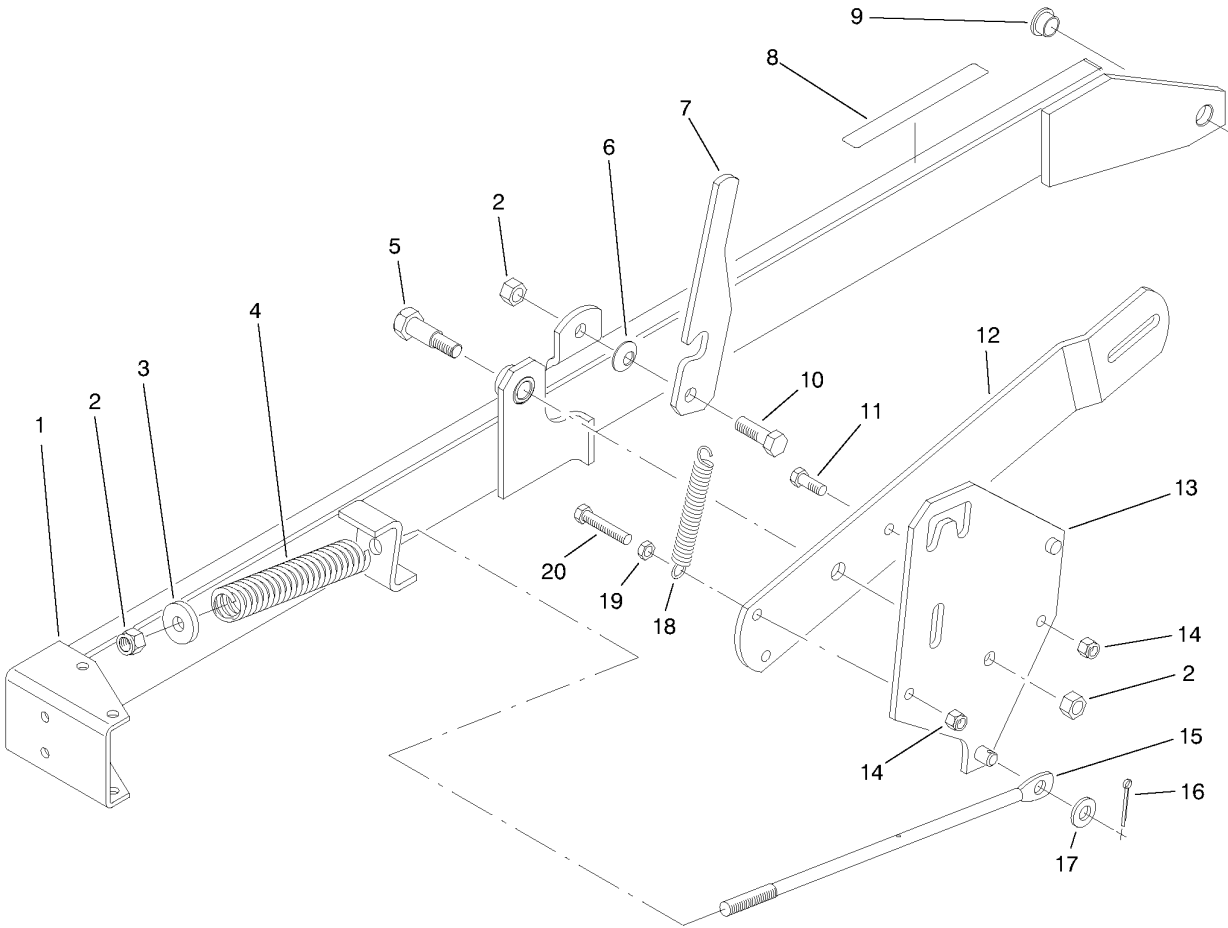
For example, in an illustration, the reference number 2X 37 means that two of the parts identified by reference number 37 are indicated.



## Blade and Handle Assembly

Ref	Part No.	Qty.	Description
3	16-1019	1	Channel
3:2	93-9078	1	Decal-Safety
5		1	LH Arm ASM (Not Serviced Separately)
6	3256-26	12	Washer-Flat
7	27-6602	4	Spacer-Coupling, Rubber
8	3296-29	18	Nut-Lock, NI
9	3218-2	2	Nut-Jam
10	3296-39	6	Nut-Lock, NI
11	3256-24	2	Washer-Flat
12	80-1300	2	Bolt-Shoulder
13	257-5	4	Washer-Thrust
14	92-2323	2	Pin
15	257-11	4	Washer-Thrust
16	325-5	4	Screw-HH
17	92-2311-03	1	LH Bracket ASM
18	3290-495	2	Pin-Klik
19	92-2312-03	1	RH Bracket ASM
20	322-9	2	Screw-HH
21	92-2314	1	Handle
22	80-1860-03	2	Handle Upright ASM
23	322-12	2	Screw-HH
24	322-11	2	Screw-HH

Ref	Part No.	Qty.	Description
25		1	RH Arm ASM (Not Serviced Separately)
26	323-17	4	Screw-HH
27	80-1890	4	Spacer
28	84-2460-03	1	Blade ASM
29	3230-2	8	Bolt-CARR
30	92-2324	2	Bracket-Pivot
31	92-2326-03	1	RH Bracket ASM
32	92-2325-03	1	LH Bracket ASM
33	80-1210	2	Block-Mounting
39	322-5	4	Screw-HH



Left and Right Hand Arm Assembly

Ref	Part No.	Qty.	Description				
1	92-2308	1	Arm-RH				
	92-2307	1	Arm-LH (Not Illustrated)				
2	3296-23	6	Nut-Lock, NI				
3	70-8040	2	Washer				
4	80-1470	2	Spring				
5	92-2315	2	Bolt-Shoulder				
6	3290-450	2	Washer-Belleville				
7	92-2320	2	Lever-Latch				
8	80-1930	2	Decal-Latch				
9	256-317	2	Bushing				
10	325-6	2	Screw-HH				
11	323-6	2	Screw-HH				
12	92-2313	2	Arm-Lift				
13	92-2319	1	Plate-RH				
	92-2318	1	Plate-LH (Not Illustrated)				
14	3296-39	4	Nut-Lock, NI				
15	80-1460	2	Rod-Spring				
16	3272-12	2	Pin-Cotter				
17	3256-26	2	Washer-Flat				
18	76-4660	2	Spring-Door				
19	3218-3	2	Nut-Jam				
20	323-9	2	Screw-HH				

