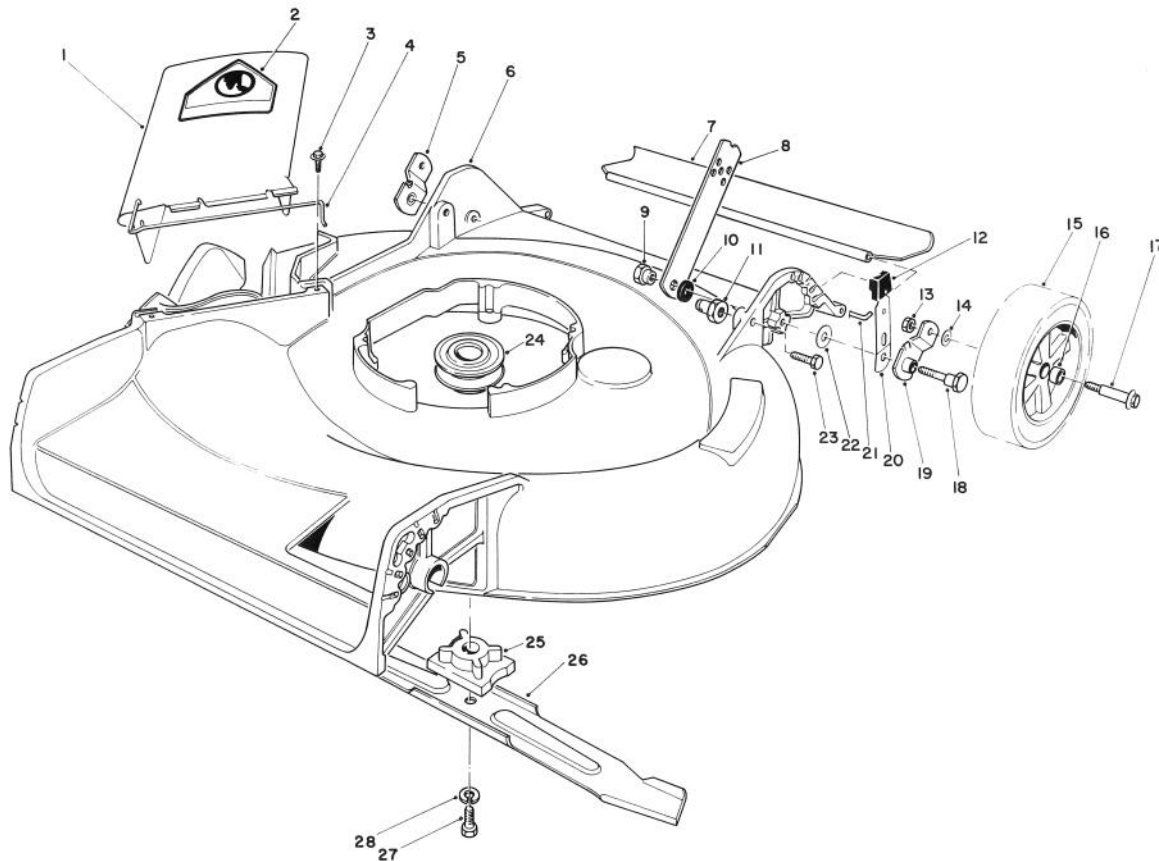


TORO®

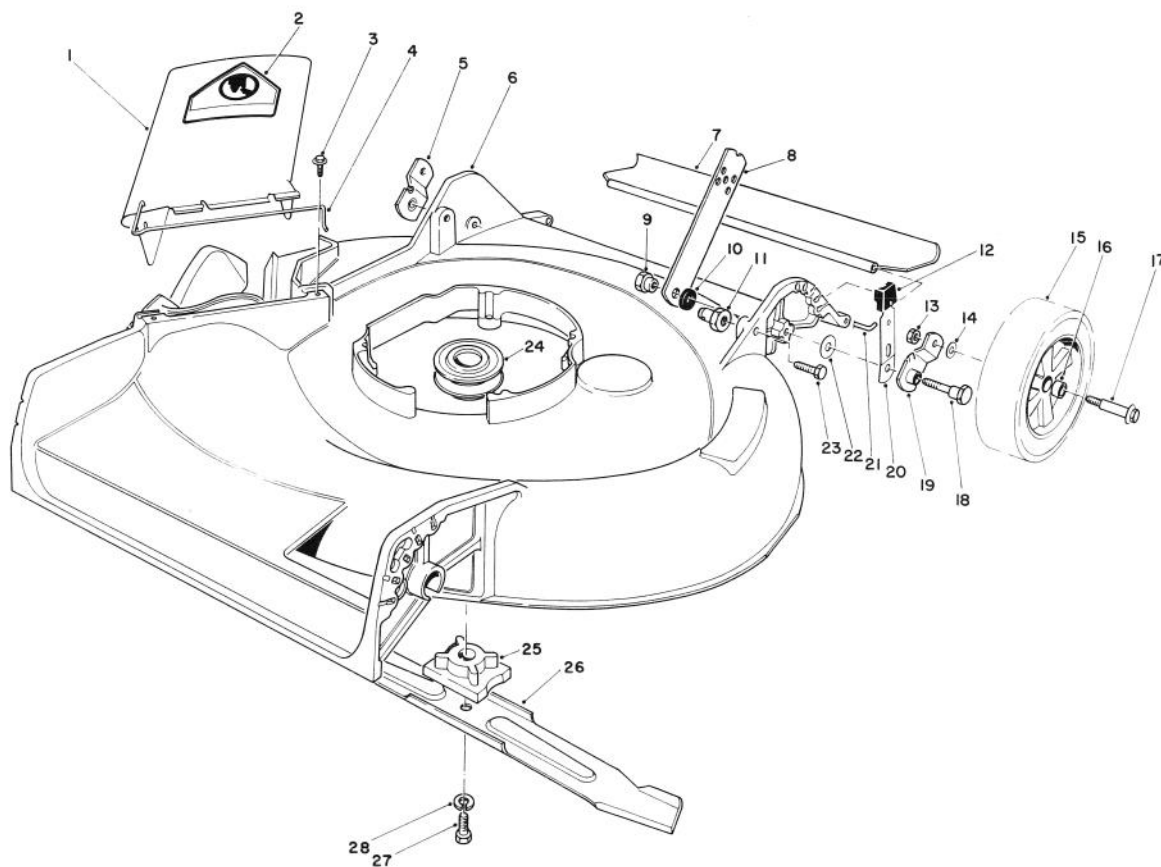
MODEL NO. 16775 — 7000001 & UP

**PARTS
CATALOG****21" S.P. SIDE DISCHARGE****HOUSING ASSEMBLY**

Ref. No.	Part No.	Description	No. Used
1	27-7817	Deflector (Incl. Ref. #2 & 4)	1
2	39-5770	Decal — Danger	1
3	46-6811	Screw & Washer Assembly	2
4	20-2640	Hinge — Spring	1
5	20-2130	Pivot Arm Assembly "B"	1
6	11-4639	Housing	1
7	22-4950	Shield — Rear	1
8	27-7080	Latch — Handle	2
9	27-6520	Nut — Shoulder	2
10	3-3287	Spacer — Handle Latch	2
11	12-2080	Nut — Shoulder	2
12	25-7740	Knob — Spring Arm	2
13	52-3620	Nut — Lock	2
14	40-1940	Washer — Wheel Bolt	2

Ref. No.	Part No.	Description	No. Used
15	27-6200	Wheel & Tire Assembly (used on units with serial no. 7001848 & up) (Incl. Ref. #16)	2
*	11-9509	Wheel & Tire Assembly (used on units with serial no. 7000001-7001847) (Incl. Ref. #16)	2
16	27-6250	Bushing	4
17	27-6230	Bolt — Wheel	2
18	28-8880	Screw — Pivot	2
19	20-2140	Pivot Arm Assembly "A"	1
20	25-8000	Spring Arm	2
21	33-3201	Rod — Rear Shield	1

* Not Illustrated

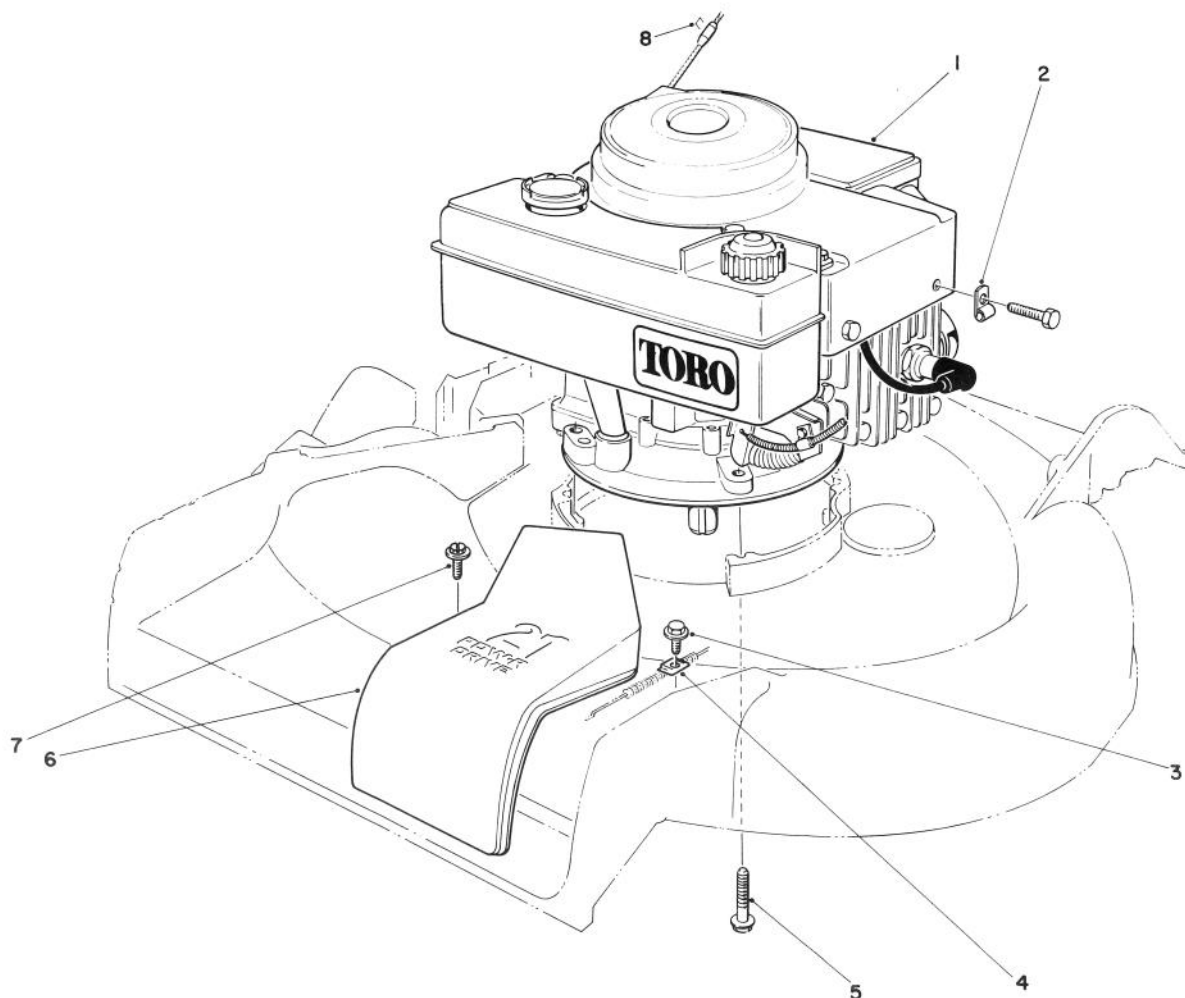


HOUSING ASSEMBLY (Continued)

Ref. No.	Part No.	Description	No. Used
22	5-4460	Washer — Pivot	2
23	322-6	Screw — Cap Hex Hd.	2
24	46-7910	Pulley — Driver (used on units with serial no. 7001848 & up)	1
*	23-0130	Pulley — Driver (used on units with serial no. 7000001-7001847)	1

Ref. No.	Part No.	Description	No. Used
25	49-7900	Retainer — Blade (used on units with serial no. 7001848 & up)	1
*	49-7890	Retainer — Blade (used on units with serial no. 7000001-7001847)	1
26	20-2720	Blade 21"	1
27	26-0671	Screw — Blade Hex Hd.	1
28	3253-22	Washer — Lock	1
*	12-1739	Loose Parts	1

* Not Illustrated

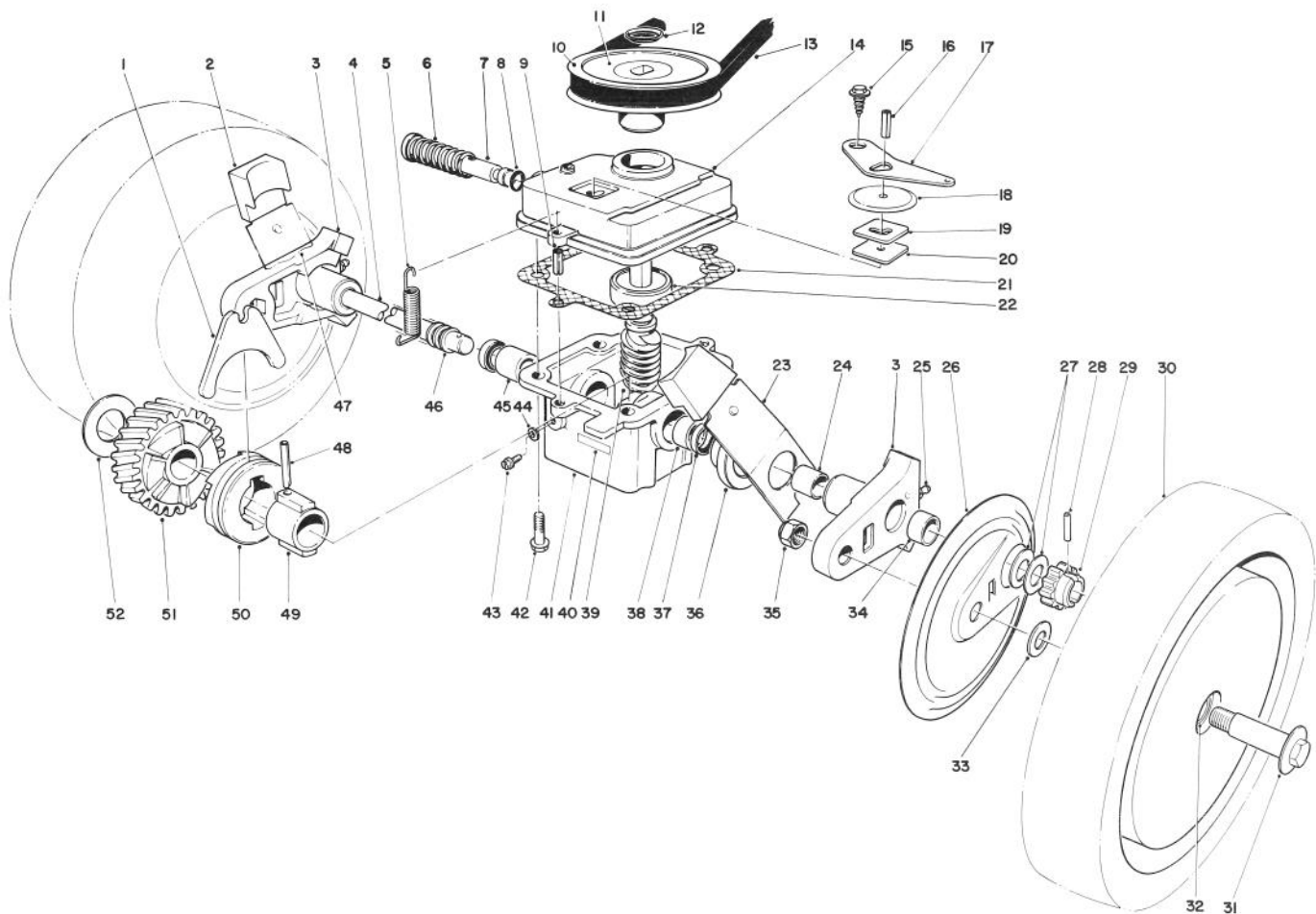


ENGINE ASSEMBLY

Ref. No.	Part No.	Description	No. Used
1		Engine	1
2	2412-63	Clamp — Casing	1
3	32144-11	Screw — Hex Flange Hd. Thread Forming	1
4	46-5610	Clamp — Cable	1

Ref. No.	Part No.	Description	No. Used
5	11-0580	Screw — Engine	3
6	46-4780	Cover — Belt	1
7	12-5450	Screw — Thread Forming	2
8†		Stable	1

† Obtain locally

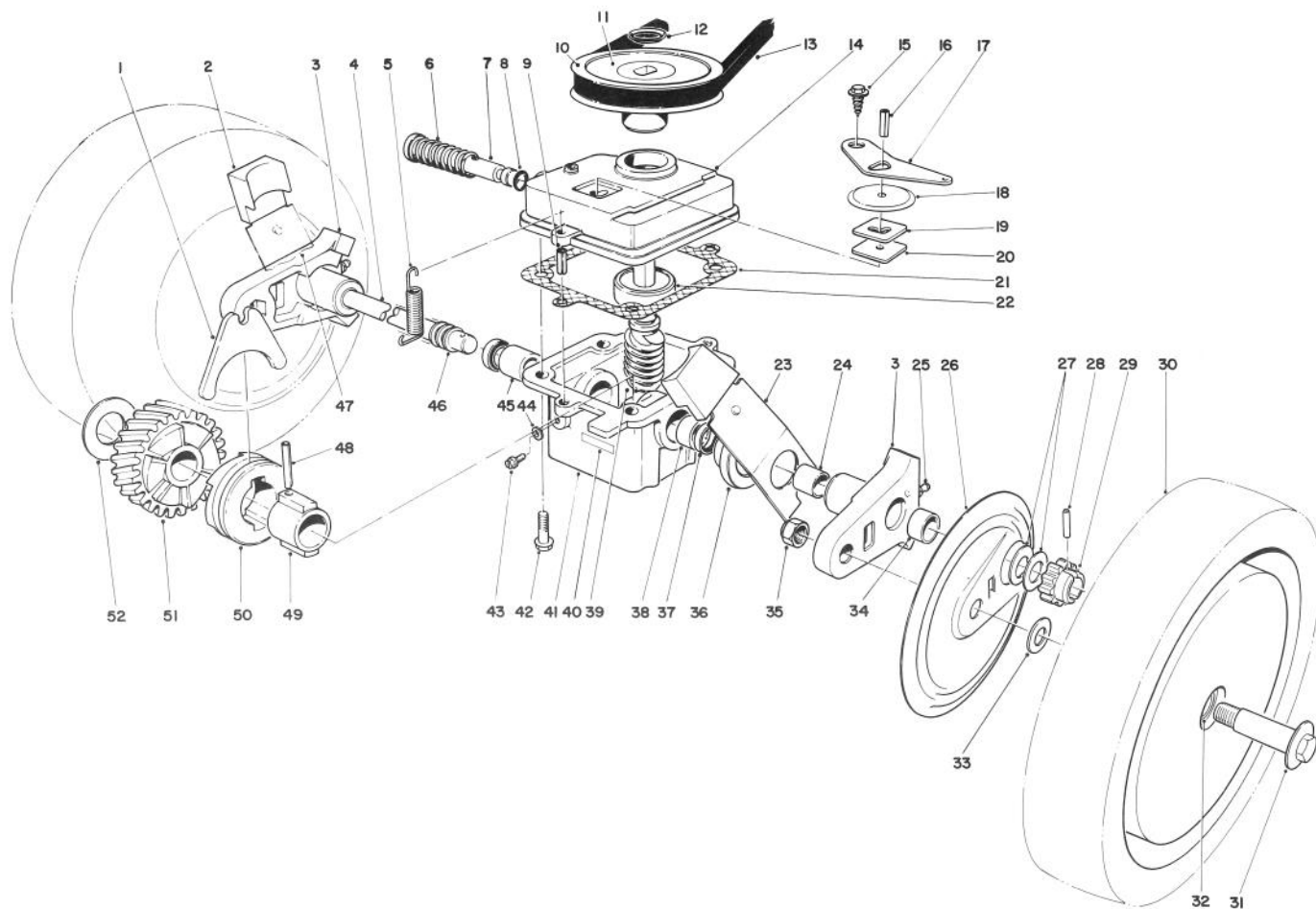


GEAR CASE ASSEMBLY

Ref. No.	Part No.	Description	No. Used
1	5-3247	Shifter Fork	1
2	25-7740	Knob Arm	2
3	38-2220	Pivot Arm	1
		(Incl. Ref. #24, 25 & 34)	2
4	37-9440	Drive Shaft	1
5	17-4490	Spring — Belt Tension	1
6	3-0731	Spring	1
7	46-8240	Shifter Rod	1
8	237-137	"O" — Ring	1
9	32121-1	Roll Pin	2
10	18-9760	Pulley	1
11	33-2450	Decal — Caution	1
12	3290-346	Push On Retainer	1
13	5-4505	V-Belt	1
14	39-1101	Gear Case Cover	1
15	32140-64	Screw — Self Tapping	1
16	32121-114	Roll Pin	1
17	5-3252	Shifter Arm	1
18	52-7380	Dust Cover	1
19	3-0681	Latch Plate	1
20	52-7370	Filter — Dust	1
21	36-1000	Gasket — Gear Case	1

Ref. No.	Part No.	Description	No. Used
22	47-7250	Ball Bearing	1
23	25-7930	Spring Arm Assembly L.H.	1
24	256-206	Bushing	2
25	302-56	Grease Fitting	2
26	18-9820	Wheel Cover (used on units with serial no. 7001848 & up)	2
*	52-7500	Wheel Cover (used on units with serial no. 7000001-7001847)	2
27	46-6510	Thrust Washer	4
28	32121-98	Pin — Coil	2
29	46-5930	Pinion Gear	2
30	11-1419	Wheel & Tire Assembly (Incl. Ref. #32) (used on units with serial no. 7001848 & up)	2
*	11-9519	Wheel & Tire Assembly (Incl. Ref. #32) (used on units with serial no. 7000001-7001847)	2
31	27-6231	Wheel Bolt	2

* Not Illustrated



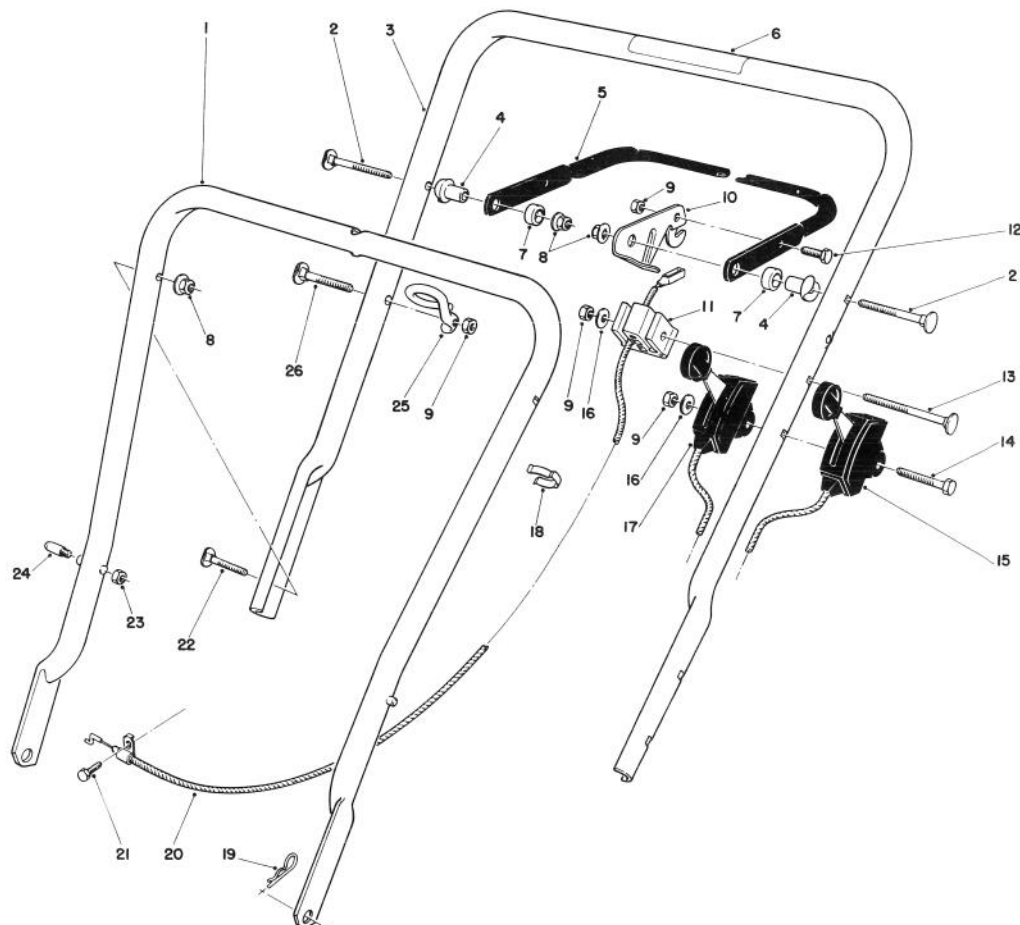
GEAR CASE ASSEMBLY (Continued)

Ref. No.	Part No.	Description	No. Used
32	27-6250	Bushing — Wheel	4
33	40-1940	Washer — Wheel Bolt	2
34	256-1	Bushing	2
35	52-3620	Nut	2
36	42-3520	End Cap	2
37	47-6730	Oil Seal	2
38	47-2890	Bushing	1
39	8-5679	Worm Shaft & Gear (Incl. Ref. #51)	1
40	40-4755	Decal	1
41	8-0479	Gear Case (Incl. Ref. #37, 38 & 45)	1
42	11-9760	Screw	4
43	28-1550	Screw Nylon	1

Ref. No.	Part No.	Description	No. Used
44	46-9640	Gasket	1
45	47-2900	Bushing	1
46	24-7920	Cover Drive Shaft	1
47	25-7920	Spring Arm Assembly R.H.	1
48	32121-88	Coil Pin	1
49	3-0721	Sleeve	1
50	19-5660	Clutch Jaw	1
51		Helical Gear	1
52	3-0724	Thrust Washer	1
*	12-2399	Gear Case Assy. Complete	1
*	27-0490	Bearing & Shaft Tool	1
†*	39-9640	Metric Bearing Tool	1
†*	27-0460	Tool — Rotary S.P. Bushing	1

* Not Illustrated

† Use With Part No. 27-0490, Bearing & Shaft Tool.



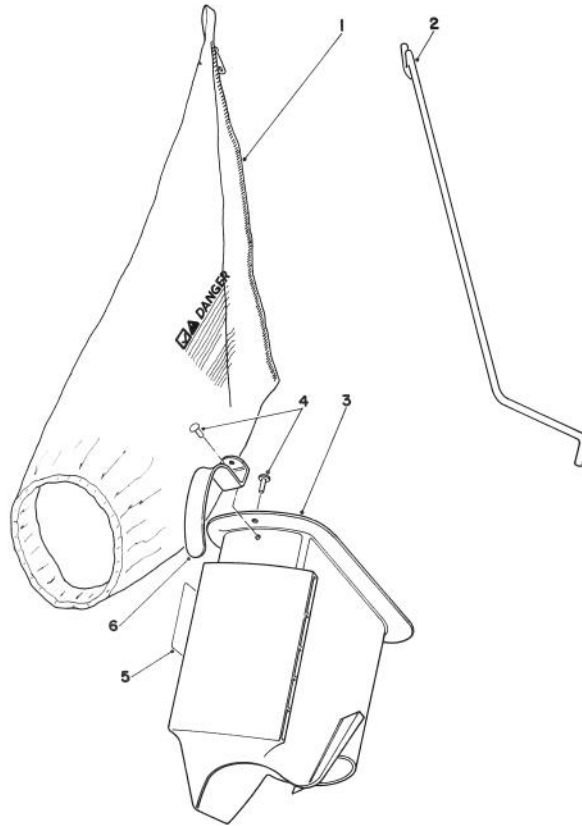
HANDLE ASSEMBLY

Ref. No.	Part No.	Description	No. Used
1	49-1690	Lower Handle Assembly	1
2	17-9421	Screw — Handle	2
3	12-4419	Handle — Upper (Incl. Ref. #6)	1
4	49-1630	Support — Spacer	2
5	62-3810	Bar — Control (used on units with serial no. 7001848 & up)	1
*	49-4220	Bar Control (used on units with serial no. 7000001-7001847)	1
6	52-7510	Decal — Warning	1
7	256-276	Spacer — Nylon	2
8	3296-58	Nut — Flange Lock	4
9	3296-42	Nut — Lock	4
10	46-7950	Lever — Control	1
11	46-6980	Support — Cable	1
12	321-3	Capscrew	1
13	46-6434	Screw — Handle	1

14	321-15	Capscrew	1
15	33-2526	Control — Traction (Bend Type #3) (Sheath Lg. 46") (Wire Lg. 1-1/4")	1
16	3256-22	Washer — Flat	2
17	46-6000	Control — Throttle (Bend Type #1) (Sheath Lg. 30") (Wire Lg. 2-1/8")	1
18	218-465	Clip — Cable (Double)	1
19	3290-255	Pin — Cotter Hair	2
20	46-8010	Cable — Brake	1
21	2210-250	Capscrew	1
22	17-9424	Screw — Handle	2
†23	3296-47	Nut — Lock	2
†24	49-2750	Pin — Handle	2
25	46-8080	Guide — Rope	1
26	46-6433	Screw — Handle	1

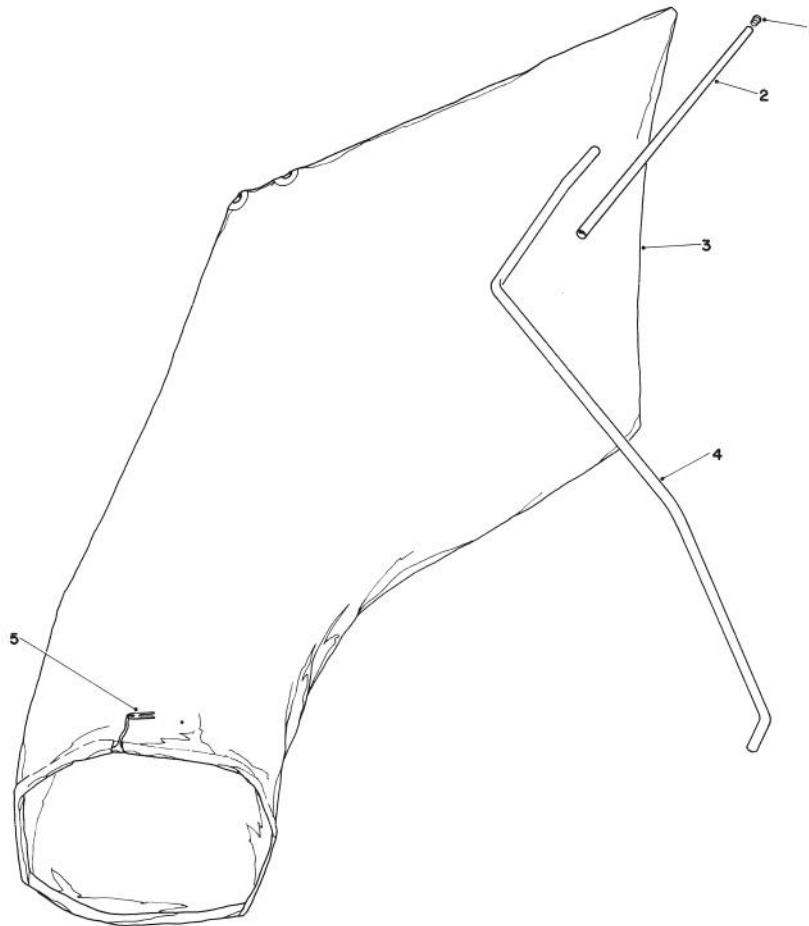
* Not Illustrated

† Service Replacement Part



BAGGING KIT NO. 47-6510 (Optional)

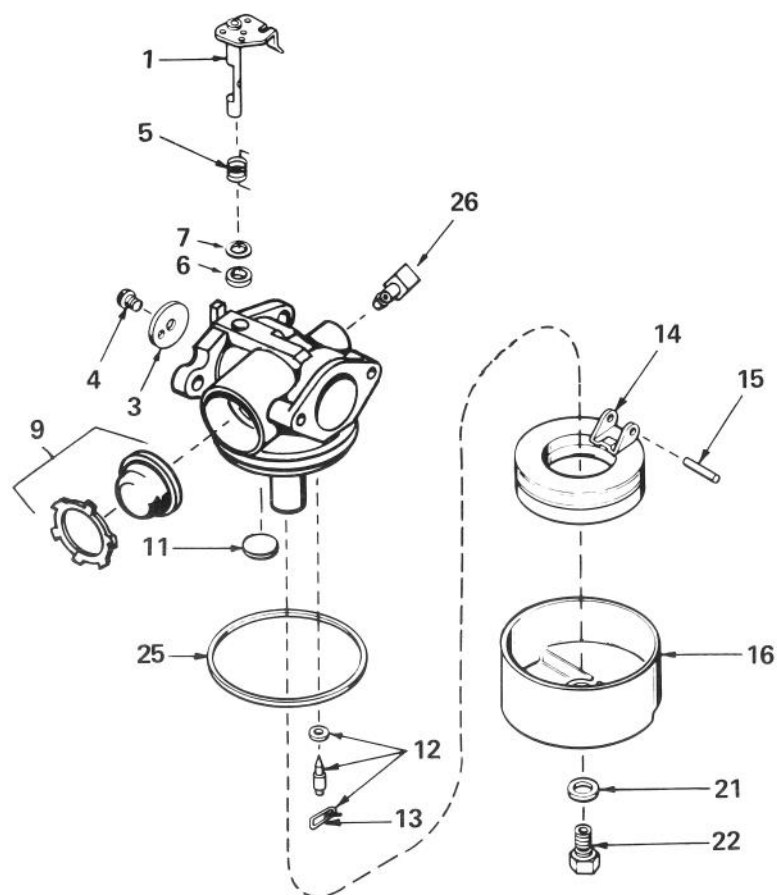
Ref. No.	Part No.	Description	No. Used	Ref. No.	Part No.	Description	No. Used
1	6-0929	Grass Bag	1	4	3295-26	Rivet	2
2	47-5830	Bag Rod	1	5	36-5230	Decal — Bag Chute	1
3	6-1089	Grass Chute (Incl. Ref. #4 & 6)	1	6	20-4650	Handle Chute	1



GIANT BAGGING KIT NO. 29-9750 (Optional)

Ref. No.	Part No.	Description	No. Used
1	2410-29	Cap	1
2	29-7000	Tube 25"	1
3	8-4719	Bag (Incl. Ref. #5)	1

Ref. No.	Part No.	Description	No. Used
4	22-4820	Hanger Rod	1
5	3-2781	Bag Cord Fasteners	1

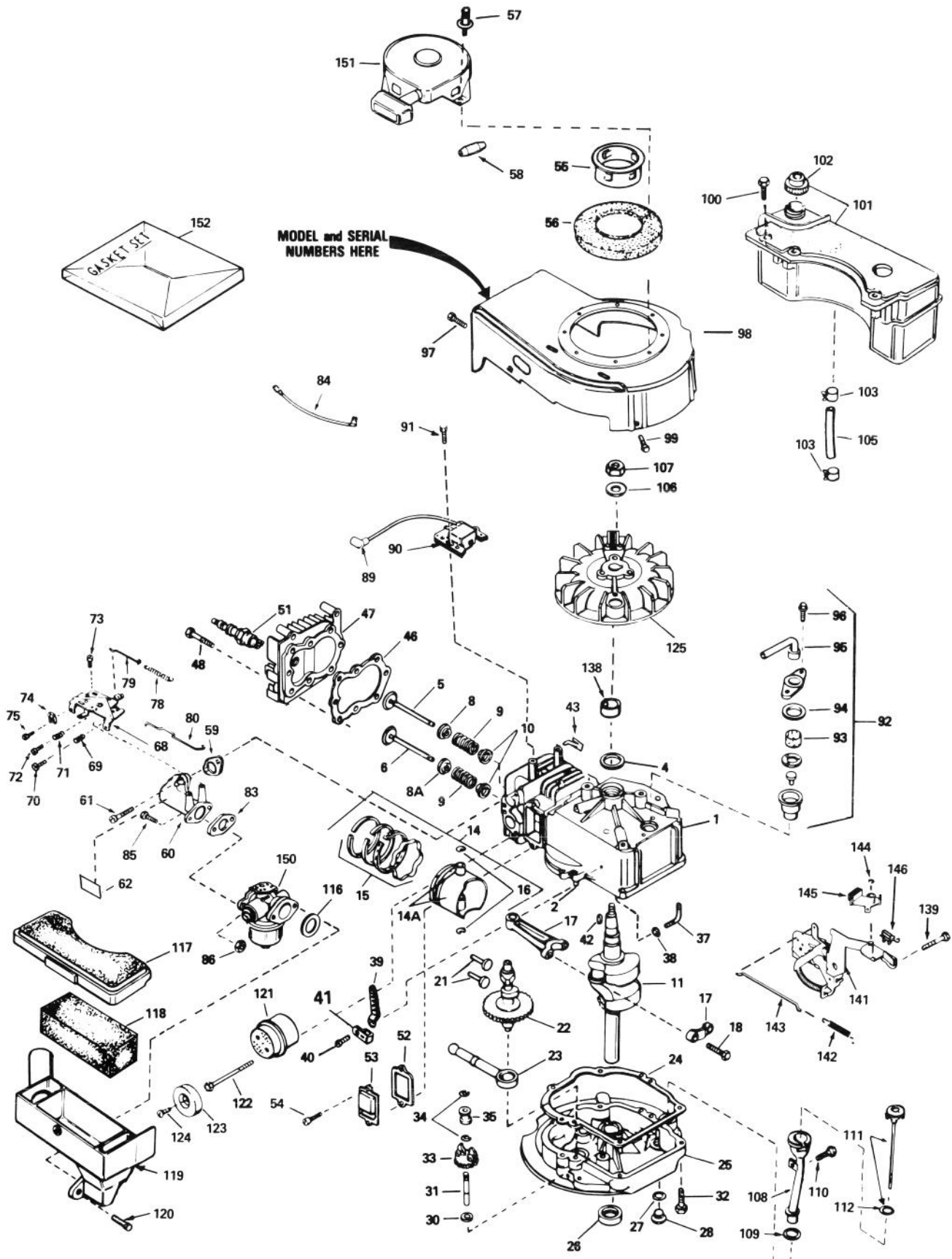


CARBURETOR NO. 632098

Ref. No.	Part No.	Description	No. Used
1	631615	Shaft & Lever Assy., Throttle	1
3	631616	Shutter — Throttle	1
4	650506	Screw — Throttle Shutter	1
5	631767	Spring — Throttle Return	1
6	631971	Seal — Dust	1
7	631184	Washer — Flat	1
9	632047	Primer Assembly	1
11	631027	Plug — Welch	1
12	631021	Inlet Needle — Seat & Clip Assy. (Incl. Ref. #13)	1

Ref. No.	Part No.	Description	No. Used
13	631022	Clip — Inlet Needle	1
14	632019	Float — Carburetor	1
15	631024	Shaft — Float	1
16	631700	Bowl — Float	1
21	631334	Gasket — Bowl-To-Body	1
22	631937	Nut — Float Bowl	1
25	631028	Gasket — Bowl-To-Body	1
26	631807	Fitting — Fuel Inlet	1

ENGINE TECUMSEH MODEL NO. TVS100-44001 (used on units with serial no. 7000001-7001847)



ENGINE TECUMSEH MODEL NO. TVS100-44001

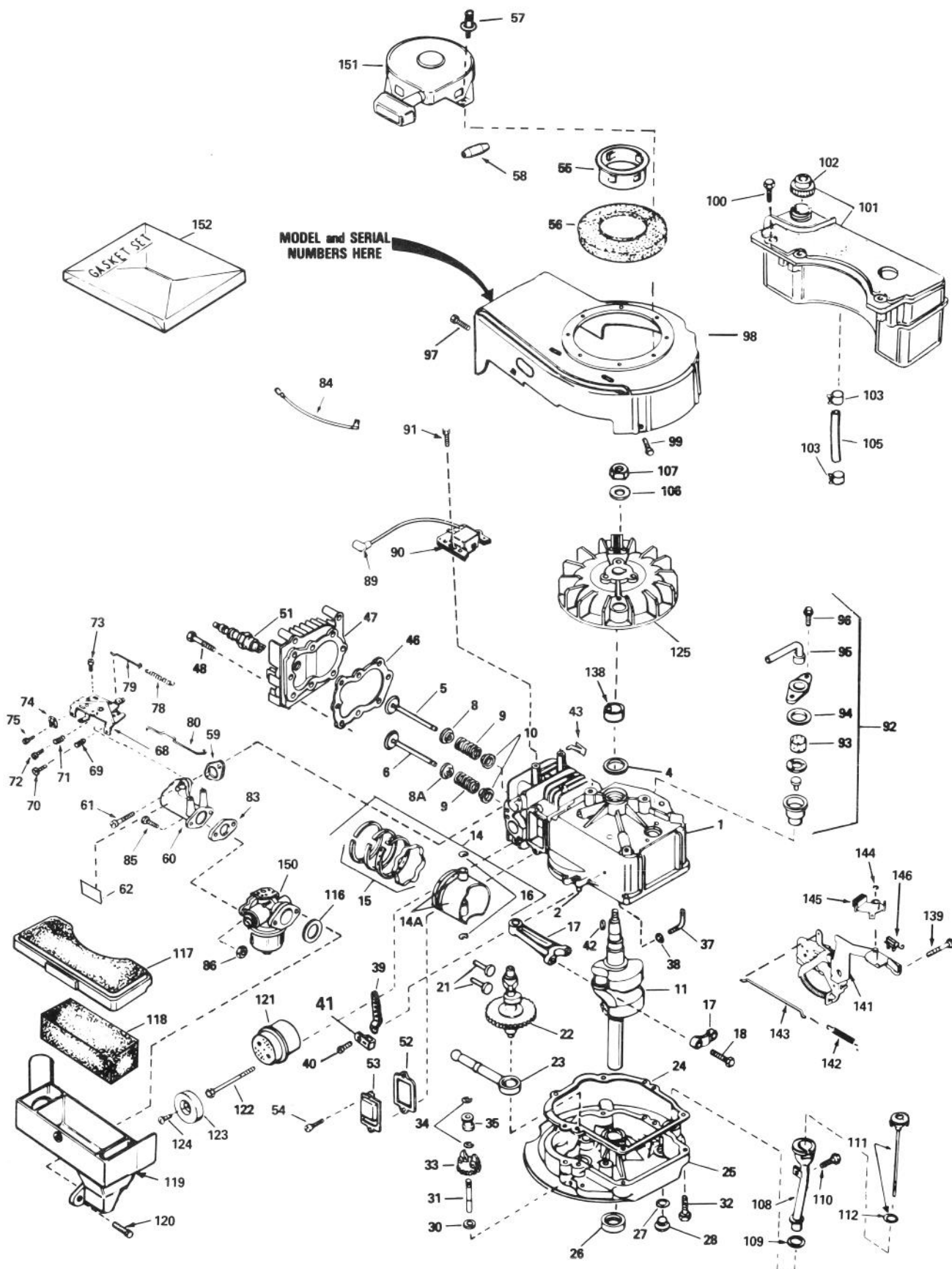
(used on units with serial no. 7000001-7001847)

Ref. No.	Part No.	Description	No. Used
1	35010	Cylinder Assembly (Incl. Ref. #2 & 4)	1
2	26727	Pin — Dowel	2
4	32600	Seal — Oil	1
5	29314B	Valve — Intake (Std.) (Incl. Ref. #10)	1
5	29315C	Valve — Intake (1/32" oversize) (Incl. Ref. #10)	1
6	29313C	Valve — Exhaust (Std.) (Incl. Ref. #10)	1
6	29315C	Valve — Exhaust (1/32" oversize) (Incl. Ref. No. 10)	1
8	35390	Seal Assembly — Intake Valve	1
8A	31671	Cap — Upper Valve Spring (Exhaust)	1
9	31672	Spring — Valve	2
10	31673	Cap — Lower Valve Spring	2
11	34440	Crankshaft	1
14	34851	Piston — Pin & Ring Assy. (Std.) (Incl. Ref. #14A, 15 & 16)	1
14	34852	Piston — Pin & Ring Assembly (.010 oversize) (Incl. Ref. #14A, 15 & 16)	1
14	34853	Piston — Pin & Ring Assembly (.020 oversize) (Incl. Ref. #14A, 15 & 16)	1
14A	32603B	Piston & Pin Assembly (Std.) (Incl. Ref. #16)	1
14A	32604B	Piston & Pin Assembly (.010 oversize) (Incl. Ref. #16)	1
14A	32605B	Piston & Pin Assembly (.020 oversize) (Incl. Ref. #16)	1
15	34854	Ring Set — Piston (Std.)	1
15	34855	Ring Set — Piston (.010 oversize)	1
15	34856	Ring Set — Piston (.020 oversize)	1
16	20381	Ring — Piston Pin Retaining	2
17	30963B	Rod Assembly — Connecting (Incl. Ref. #18)	1
18	32610A	Screw — Connecting Rod	2
21	27241	Lifter — Valve	2
22	33553	Camshaft (Mechanical Compression Release)	1
23	29914	Pump Assembly — Oil	1
24	*35261	Gasket — Mounting Flange	1
25	34831	Flange Assembly — Mounting (Incl. Ref. #26, 27, 28 & 31)	1
26	26208	Seal — Oil	1
27	*28833	Gasket — Oil Drain Plug	1
28	27244	Plug — Oil Drain	1
30	30590A	Washer — Flat	1
31	30574	Shaft — Mechanical Governor	1
32	650488	Screw — Hex Hd.	6

Ref. No.	Part No.	Description	No. Used
33	30591	Gear Assembly — Governor (Incl. Ref. #30)	1
34	29193	Ring — Retaining	2
35	30588A	Spool — Governor	1
37	30589	Rod — Governor (Incl. Ref. #38)	1
38	28277	Washer — Flat	1
39	31383A	Lever — Governor	1
40	650548	Screw — Hex Washer Hd.	1
41	31335	Clamp — Governor Lever	1
42	611004	Key — Flywheel (Solid State)	1
43	29443	Clip — Spring	1
46	*33015	Gasket — Cylinder Head	1
47	34342	Head — Cylinder	1
48	6021A	Screw — Hex Flange Hd.	8
51	35078	Plug — Spark (Autolite 458, Champion J-19LM or equivalent)	1
52	*27234	Gasket — Breather	1
53	32755	Cover — Valve Spring	1
54	650128	Screw — Fil. Hd.	2
55	34449	Hub — Starter	1
56	35009	Screen — Starter	1
57		Pop Rivet (Can be purchased locally)	1
58	34985	Rope Stop & Staple Assembly	1
59	*34690	Gasket — Intake Pipe	1
60	31384A	Pipe — Intake (Incl. Ref. #59)	1
61	650451	Screw — Hex Hd.	2
62	34144	Decal — Primer	1
68	33131A	Control Assy. — Remote Speed (Incl. Ref. #69 thru 72)	1
69	33802	Spring — Compression	1
70	650777	Screw — Fil. Hd.	1
71	31342	Spring — Compression	1
72	650549	Screw — Fil. Hd.	1
73	30200	Screw — Hex Washer Hd. Self-Tap.	2
74	27793	Clip — Conduit	1
75	28942	Screw — Hex Washer Hd.	1
78	31361	Spring — Governor	1
79	34337	Link — Governor Spring	1
80	34336	Link — Governor-to-Throttle	1
83	*26756	Gasket — Carburetor	1
84	34961	Wire — Ground	1
85	6201	Screw — Hex Hd.	2
86	29752	Nut & Lockwasher	2
89	610118	Cover — Spark Plug	1
90	34443A	Solid State Assembly	1
91	650814	Screw — Hex Hd.	2
92	34214A	Breather Assembly (Incl. Ref. #93 thru 96)	1
93	33734	Element — Breather	1
94	*33735	Gasket — Breather	1
95	33886	Tube — Breather	1

*Indicates parts included in Gasket Set, Ref. #152.

ENGINE TECUMSEH MODEL NO. TVS100-44001 (Continued) (used on units with serial no. 7000001-7001847)



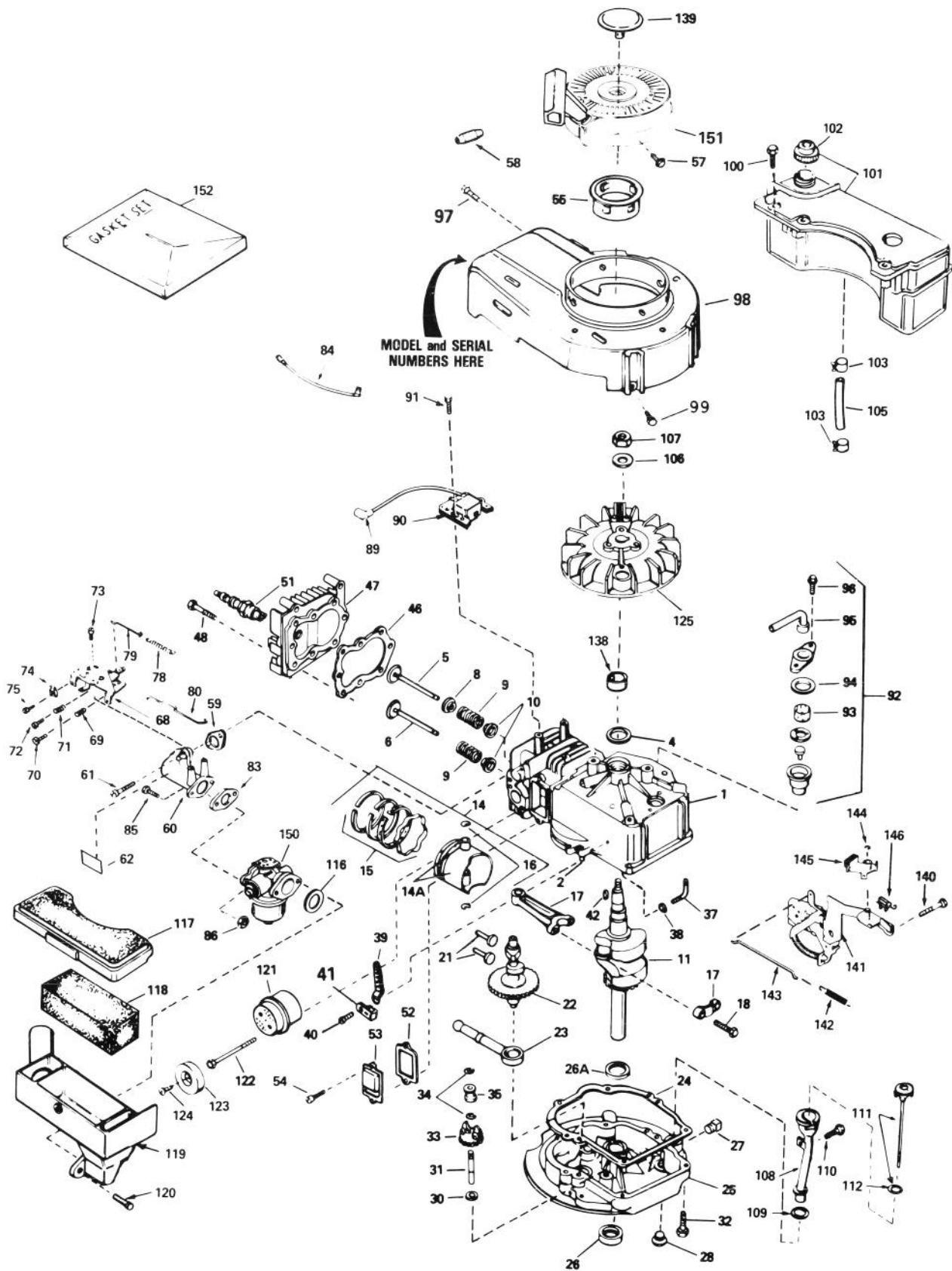
ENGINE TECUMSEH MODEL NO. TVS100-44001 (Continued) **(used on units with serial no. 7000001-7001847)**

Ref. No.	Part No.	Description	No. Used
96	30200	Screw — Hex Washer Hd. Self-Tap.	2
97	30200	Screw — Hex Washer Hd. Self-Tap.	2
98	34936	Housing — Blower	1
99	650831	Screw — Hex Washer Hd. Power Lok Thread	2
100	28763	Screw — Hex Washer Hd.	3
101	34476	Tank Assembly — Fuel (Incl. Ref. #102)	1
102	33032	Cap — Fuel Tank	1
103	26460	Clamp — Fuel Line	2
105	30705	Line — Fuel	1
106	650815	Washer — Belleville	1
107	650816	Nut — Flywheel	1
108	34264	Tube — Oil Fill	1
109	34265	Gasket — Oil Fill Tube	1
110	650562	Screw — Hex Washer Hd.	1
111	34281	Dipstick — Oil (Incl. Ref. #112)	1
112	33590	"O" Ring	1
116	*34338	Gasket — Air Cleaner	1
117	34341	Cover — Air Cleaner	1

Ref. No.	Part No.	Description	No. Used
118	34340	Element — Air Cleaner	1
119	34858	Body — Air Cleaner	1
120	650806	Screw — Hex Washer Hd. Shoulder	2
121	27181B	Muffler (Incl. Ref. #122)	1
122	650795	Screw — Hex Hd.	2
123	32431	Cover — Muffler	1
124	650643	Screw — Pan Hd. Self-Tap.	1
125	611046A	Flywheel	1
138	34080	Spacer — Flywheel Key	1
139	650839	Screw — Hex Hd. Self-Tap.	2
141	35015	Bracket Assembly — Brake	1
142	34965	Spring — Extension	1
143	34966	Link — Control	1
144	32309	Ring — Retaining	1
145	34968	Lever — Brake	1
146	610973	Terminal Assembly	1
150	632098	Carburetor (Incl. Ref. #83)	1
151	590420A	Starter — Rewind	1
152	33238C	Gasket Set (Incl. Items Marked *)	1

*Indicates parts included in Gasket Set, Ref. #152.

(used on units with serial no. 7001848 & up)



ENGINE TECUMSEH MODEL NO. TVS100-44012A

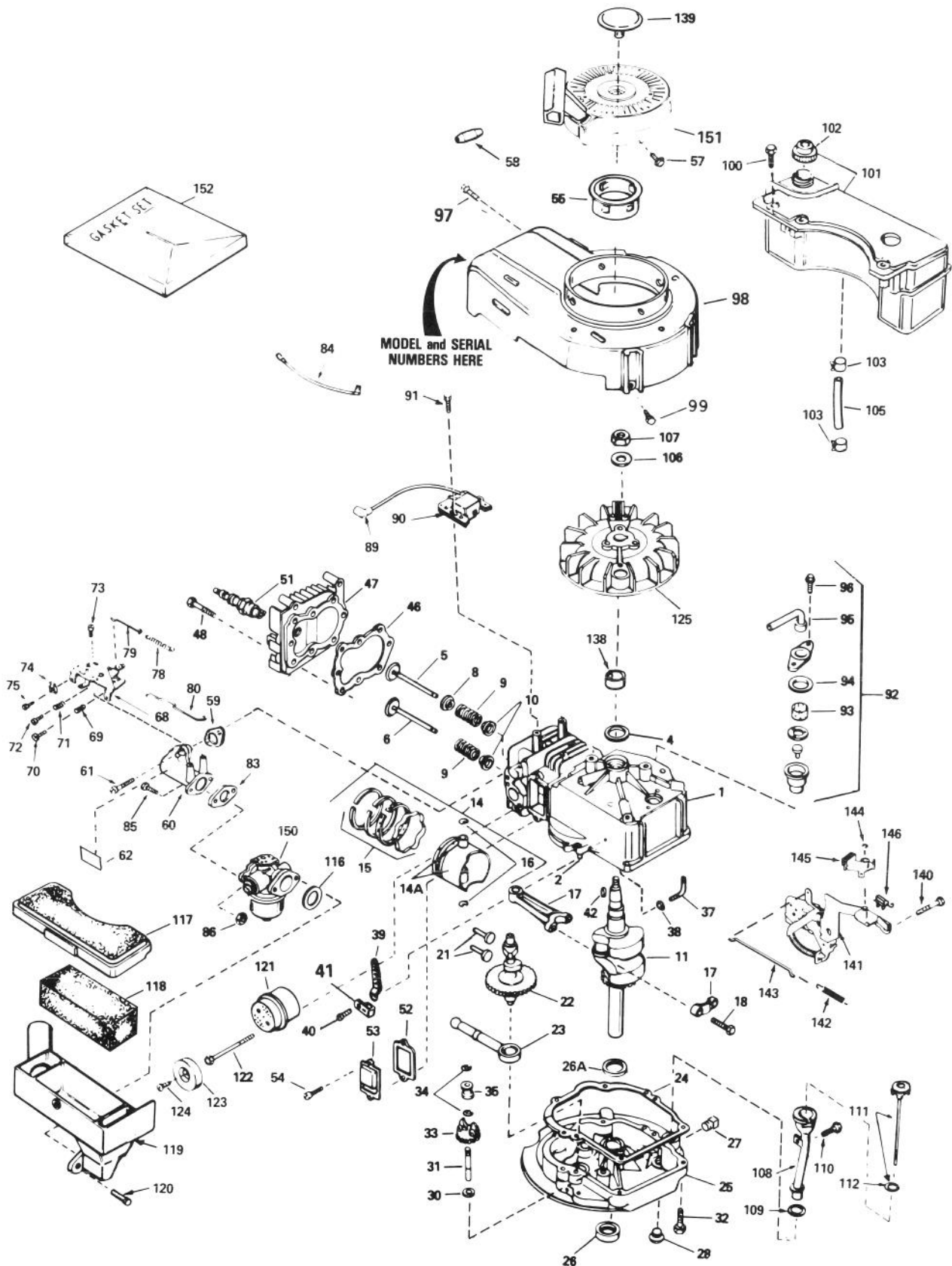
(used on units with serial no. 7001848 & up)

Ref. No.	Part No.	Description	No. Used
1	35010	Cylinder Assembly (Incl. Ref. #2 & 4)	1
2	26727	Pin — Dowel	2
4	32600	Seal — Oil	1
5	29314B	Valve — Intake (Std.) (Incl. Ref. #10)	1
5	29315C	Valve — Intake (1/32" oversize) (Incl. Ref. #10)	1
6	29313C	Valve — Exhaust (Std.) (Incl. Ref. #10)	1
6	29315C	Valve — Exhaust (1/32" oversize) (Incl. Ref. #10)	1
8	35390	Seal Assembly — Intake Valve	1
9	31672	Spring — Valve	2
10	31673	Cap — Lower Valve Spring	2
11	35482	Crankshaft	1
14	34851	Piston — Pin & Ring Assy. (Std.) (Incl. Ref. #14A, 15 & 16)	1
14	34852	Piston — Pin & Ring Assembly (.010 oversize) (Incl. Ref. #14A, 15 & 16)	1
14	34853	Piston — Pin & Ring Assembly (.020 oversize) (Incl. Ref. #14A, 15 & 16)	1
14A	32603B	Piston & Pin Assembly (Std.) (Incl. Ref. #16)	1
14A	32604B	Piston & Pin Assembly (.010 oversize) (Incl. Ref. #16)	1
14A	32605B	Piston & Pin Assembly (.020 oversize) (Incl. Ref. #16)	1
15	34854	Ring Set — Piston (Std.)	1
15	34855	Ring Set — Piston (.010 oversize)	1
15	34856	Ring Set — Piston (.020 oversize)	1
16	20381	Ring — Piston Pin Retaining	2
17	30963B	Rod Assembly — Connecting (Incl. Ref. #18)	1
18	32610A	Screw — Connecting Rod	2
21	27241	Lifter — Valve	2
22	33553	Camshaft (Mechanical Compression Release)	1
23	29914	Pump Assembly — Oil	1
24	*35261	Gasket — Mounting Flange	1
25	34311B	Flange Assembly — Mounting (Incl. Ref. #26, 27, 28 & 31)	1
26	27897	Seal — Oil	1
26A	32323	Washer — Thrust	1
28	27244	Plug — Oil Drain	1
30	30590A	Washer — Flat	1
31	30574	Shaft — Mechanical Governor	1
32	650488	Screw — Hex Hd.	6
33	30591	Gear Assembly — Governor (Incl. Ref. #30)	1

Ref. No.	Part No.	Description	No. Used
34	29193	Ring — Retaining	2
35	30588A	Spool — Governor	1
37	30589	Rod — Governor (Incl. Ref. #38)	1
38	28277	Washer — Flat	1
39	31383A	Lever — Governor	1
40	650548	Screw — Hex Washer Hd.	1
41	31335	Clamp — Governor Lever	1
42	611004	Key — Flywheel (Solid State)	1
46	*33015	Gasket — Cylinder Head	1
47	34342	Head — Cylinder	1
48	6021A	Screw — Hex Flange Hd.	8
51	35078	Plug — Spark (Autolite 458, Champion J-19LM or equivalent)	1
52	*27234	Gasket — Breather	1
53	32755	Cover — Valve Spring	1
54	650128	Screw — Fil. Hd.	2
55	35000	Hub — Starter	1
57	650884	Screw — Hex Washer Hd.	4
58	34985	Rope Stop & Staple Assembly	1
59	*34690	Gasket — Intake Pipe	1
60	31384A	Pipe — Intake (Incl. Ref. #59)	1
61	650451	Screw — Hex Hd.	2
62	34144	Decal — Primer	1
68	33131A	Control Assy. — Remote Speed (Incl. Ref. #69 thru 72)	1
69	33802	Spring — Compression	1
70	650777	Screw — Fil. Hd.	1
71	31342	Spring — Compression	1
72	650549	Screw — Fil. Hd.	1
73	30200	Screw — Hex Washer Hd. Self-Tap.	2
74	27793	Clip — Conduit	1
75	28942	Screw — Hex Washer Hd.	1
78	31361	Spring — Governor	1
79	34337	Link — Governor Spring	1
80	34336	Link — Governor-to-Throttle	1
83	*26756	Gasket — Carburetor	1
84	34961	Wire — Ground	1
85	6201	Screw — Hex Hd.	2
86	29752	Nut & Lockwasher	2
89	610118	Cover — Spark Plug	1
90	34443A	Solid State Assembly	1
91	650814	Screw — Hex Hd.	2
92	34214A	Breather Assembly (Incl. Ref. #93 thru 96)	1
93	33734	Element — Breather	1
94	*33735	Gasket — Breather	1
95	33886	Tube — Breather	1
96	30200	Screw — Hex Washer Hd. Self-Tap.	2
97	30200	Screw — Hex Washer Hd. Self-Tap.	2
98	35484	Housing — Blower	1

*Indicates parts included in Gasket Set, Ref. #152.

ENGINE TECUMSEH MODEL NO. TVS100-44012A (used on units with serial no. 7001848 & up)

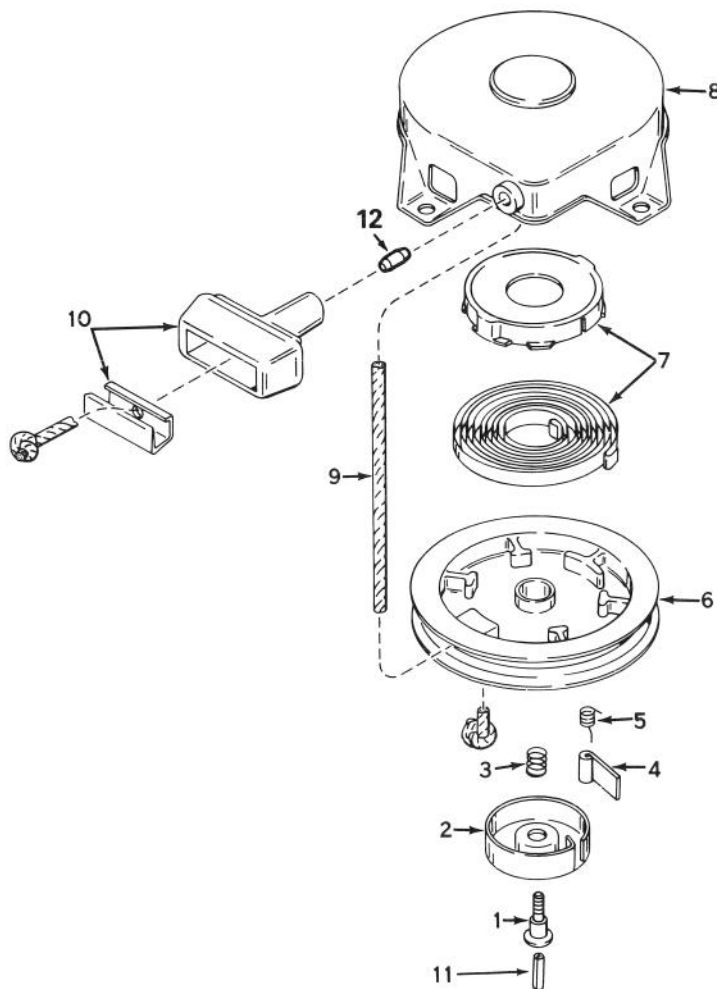


ENGINE TECUMSEH MODEL NO. TVS100-44012A (Continued)

(used on units with serial no. 7001848 & up)

Ref. No.	Part No.	Description	No. Used	Ref. No.	Part No.	Description	No. Used
99	650831	Screw — Hex Washer Hd. Power Lok Thread	2	121	27181B	Muffler (Incl. Ref. #122)	1
100	28763	Screw — Hex Washer Hd.	3	122	650795	Screw — Hex Hd.	2
101	34476	Tank Assembly — Fuel (Incl. Ref. #102)	1	123	32431	Cover — Muffler	1
102	33032	Cap — Fuel Tank	1	124	650760	Screw — Pan Hd. Taptite	1
103	26460	Clamp — Fuel Line	2	125	611046A	Flywheel	1
105	30705	Line — Fuel	1	138	34080	Spacer — Flywheel Key	1
106	650815	Washer — Belleville	1	139	35392	Plug — Starter	1
107	650816	Nut — Flywheel	1	140	650839	Screw — Hex Hd. Self-Tap.	2
108	34264	Tube — Oil Fill	1	141	35015A	Bracket Assembly — Brake	1
109	34265	Gasket — Oil Fill Tube	1	142	34965	Spring — Extension	1
110	650562	Screw — Hex Washer Hd.	1	143	34966	Link — Control	1
111	34267	Dipstick — Oil (Incl. Ref. #112)	1	144	32309	Ring — Retaining	1
112	33590	“O” Ring	1	145	34968	Lever — Brake	1
116	*34338	Gasket — Air Cleaner	1	146	610973	Terminal Assembly	1
117	34341A	Cover — Air Cleaner	1	150	632098	Carburetor (Incl. Ref. #83)	1
118	34340	Element — Air Cleaner	1	151	590621	Starter — Rewind	1
119	34858	Body — Air Cleaner	1	152	33238C	Gasket Set (Incl. Items Marked *)	1
120	650806	Screw — Hex Washer Hd. Shoulder	2				

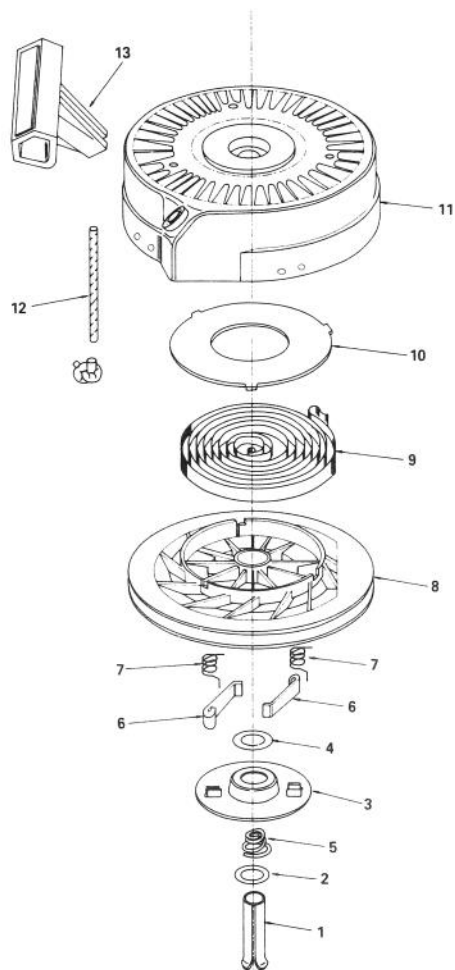
*Indicates parts included in Gasket Set, Ref. #152.



REWIND STARTER NO. 590420A
(used on units with serial no. 7000001-7001847)

Ref. No.	Part No.	Description	No. Used
1	590409A	Screw — Retainer	1
2	590410	Retainer — R.H.	1
3	590411	Spring — Brake	1
4	590148	Dog — Starter	1
5	590412	Spring — R.H. Dog	1
6	590413A	Pulley	1
7	590414	Spring & Keeper Assy.	1

Ref. No.	Part No.	Description	No. Used
8	590536	Housing Assy. — Starter (Incl. #1)	1
9	590535	Rope — Starter	1
10	590387	Handle Assy. — Starter	1
11	590459	Pin — Centering	1
12	34985	Stop & Staple — Rope (Not used on all models)	1



REWIND STARTER NO. 590621
(used on units with serial no. 7001848 & up)

Ref. No.	Part No.	Description	No. Used	Ref. No.	Part No.	Description	No. Used
1	590599	Pin — Spring	1	8	590618	Pulley	1
2	590600	Washer	1	9	590619	Spring — Rewind	1
3	590615	Retainer	1	10	590620	Cover — Spring	1
4	590601	Washer	1	11	590622	Housing Assembly — Starter	1
5	590598	Spring — Brake	1	12	590535	Rope — Starter (Length 98" & 9/64" dia.)	1
6	590616	Dog — Starter	2	13	590452	Handle — Starter	1
7	590617	Spring — Dog	2				

PRODUCT CHANGES

In an effort to make improvements available to TORO owners as quickly as possible, minor changes are incorporated into Toro's products from time to time that do not become immediately shown in the Parts Catalog. If such a change apparently has been made in your unit, which is not reflected in your manual, see your TORO Distributor or his Authorized TORO Service Dealer for information and part numbers.

IDENTIFICATION AND ORDERING

MODEL AND SERIAL NUMBERS

The Mower has two identification numbers: a model number and a serial number. The two numbers are stamped on a decal which is located on the mower housing between the rear wheels. In any correspondence concerning the mower, supply model and serial numbers to assure that correct information and replacement parts are obtained.

To order replacement parts from an Authorized TORO Service Dealer, supply the following information:

1. Model and serial numbers of the mower.
2. Part number, description, and quantity of part(s) desired.

Note: Do not order by reference number if a parts catalog is being used; use the PART NUMBER.

The Toro Promise

A Two Year Limited Warranty

On All

Gasoline Powered Consumer Products

The Toro Company promises to repair your TORO Product if defective in materials or workmanship. The following time periods from the date of purchase apply:

Residential Product 2 Years

Residential Products Used Commercially 45 Days

The costs of parts and labor are included, but the customer pays the transportation costs. Just return any residential product to an Authorized TORO Service Dealer or TORO Distributor.

Should you feel your TORO Product is defective and wish to rely on The Toro Promise, the following procedure is recommended:

1. Contact any Authorized TORO Service Dealer, TORO Master Service Dealer, or TORO Distributor (the Yellow Pages of your telephone directory is a good reference source).
2. He will either instruct you to return the product to him or recommend another Authorized TORO Service outlet which might be more convenient.
3. Bring the product along with your original sales slip, or other evidence of purchase date, to the service dealer.
4. The servicing dealer will inspect the unit, advise you whether the product is defective and, if so, make all repairs necessary to correct the defect without extra charge to you.

If for any reason you are dissatisfied with the dealer's analysis of the defect or the service performed, you may contact us.

Write:

TORO Consumer Service Department
8111 Lyndale Avenue South
Minneapolis, Minnesota 55420

The above remedy of product defects through repair by an Authorized TORO Service Dealer is the purchaser's sole remedy for any defect.

THERE IS NO OTHER EXPRESS WARRANTY. ALL IMPLIED WARRANTIES OF MERCHANTABILITY AND

FITNESS FOR USE ARE LIMITED TO THE DURATION OF THE EXPRESS WARRANTY.

Some states do not allow limitations on how long an implied warranty lasts, so the above limitation may not apply to you.

This warranty applies only to parts or components which are defective and does not cover repairs necessary due to normal wear, misuse, accidents, or lack of proper maintenance. Regular, routine maintenance of the unit to keep it in proper operating condition is the responsibility of the owner.

All warranty repairs reimbursable under The Toro Promise must be performed by an Authorized TORO Service Dealer using Toro approved replacement parts.

Repairs or attempted repairs by anyone other than an Authorized TORO Service Account are not reimbursable under The Toro Promise. In addition, these unauthorized repair attempts may result in additional malfunctions, the correction of which is not covered by warranty.

THE TORO COMPANY IS NOT LIABLE FOR INDIRECT, INCIDENTAL OR CONSEQUENTIAL DAMAGES IN CONNECTION WITH THE USE OF THE PRODUCT INCLUDING ANY COST OR EXPENSE OF PROVIDING SUBSTITUTE EQUIPMENT OR SERVICE DURING PERIODS OF MALFUNCTION OR NON-USE.

Some states do not allow the exclusion or limitation of incidental or consequential damages, so the above limitation or exclusion may not apply to you.

This warranty gives you specific legal rights, and you may also have other rights which vary from state to state.

COUNTRIES OTHER THAN THE UNITED STATES OR CANADA

Customers who have purchased TORO products exported from the United States or Canada should contact their TORO Distributor (Dealer) to obtain guarantee policies for your country, province or state. If for any reason

you are dissatisfied with your Distributor's service or have difficulty obtaining guarantee information, contact the TORO importer. If all other remedies fail, you may contact us at The Toro Company.