



**6in x 2ft Soil Chain Kit**  
**For Dingo® Compact Utility Loaders**  
**Model No. 108–5540**

Form No. 3353-228 Rev -

**Installation Instructions**

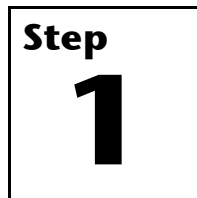
# Installation

## Loose Parts

Use the chart below to verify that all parts have been shipped.

Step	Description	Qty.	Use
1	No parts required	–	Remove the spoils auger.
2	Left soil tooth Right soil tooth Spacer Tube Bolt (3/8 x 4 inches) Bolt (3/8 x 1-1/4 inches) Locknut (3/8 inch)	3 3 6 3 3 6 9	Install the teeth.
3	No parts required	–	Install the spoils auger.

**Note:** Determine the left and right sides of the machine from the normal operating position.

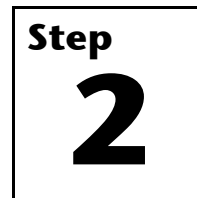


### Removing the Spoils Auger

#### No Parts Required

#### Procedure

1. Lower the loader arms, stop the engine, and remove the key.
2. Remove the bolt and nut securing the spoils auger to the trencher (Figure 2).
3. Start the engine and raise the loader arms slightly (2 to 3 inches).
4. Stop the engine and remove the key.
5. Remove the auger and retain the bolt and nut.



### Installing the Teeth

#### Parts needed for this step:

3	Left soil tooth
3	Right soil tooth
6	Spacer
3	Tube
3	Bolt (3/8 x 4 inches)
6	Bolt (3/8 x 1-1/4 inches)
9	Locknut (3/8 inch)

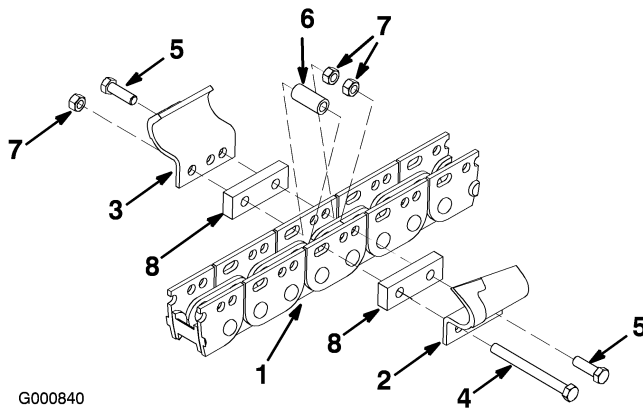
#### Procedure

The chain on your trencher comes from the factory with teeth designed to dig a 4 inch trench in soil. This kit contains the parts you need to convert the chain into an 6 inch cutting width

chain. The chain has 24 links, and each link can have digging teeth fastened to it and is referred to as a tooth position. For the 4 inch soil chain, the teeth are fastened onto every other link, for a total of 16 teeth. To make it into a 6 inch chain, you add a 6 inch tooth configuration between 2 existing teeth every 8 links. At each tooth position, the teeth are fastened in various configurations with spacers and tubes to vary the width of cut. The tooth configurations are arranged along the chain to maximize digging efficiency.

The teeth are cupped differently depending on the side of the chain to which they are fastened (left or right). The teeth are fastened to the chain links with bolts, nuts, tubes, and spacers of varying sizes.

1. Lower the loader arms, stop the engine, and remove the key.
2. On an empty chain link in the front of the trencher, install right and left soil teeth on both sides of the chain as illustrated in Figure 1.



**Figure 1**

- |                          |                              |
|--------------------------|------------------------------|
| 1. Chain link            | 5. Bolt (3/8 x 1-1/4 inches) |
| 2. Left soil tooth       | 6. Tube                      |
| 3. Right soil tooth      | 7. Locknut (3/8 inch)        |
| 4. Bolt (3/8 x 4 inches) | 8. Spacer                    |

3. Eight chain links back, install right and left soil teeth on both sides of the chain as illustrated in Figure 1.
4. Start the engine, raise the trencher slightly off the ground using the loader arms, and slowly run the chain forward to move the other 12 links to the top.
5. Lower the loader arms, stop the engine, and remove the key.

6. Eight chain links back from the last tooth you installed, install right and left soil teeth on both sides of the chain as illustrated in Figure 1.
7. Torque all bolts and nuts you installed previously to 27 to 33 ft-lb (37 to 45 N·m).

### Step

# 3

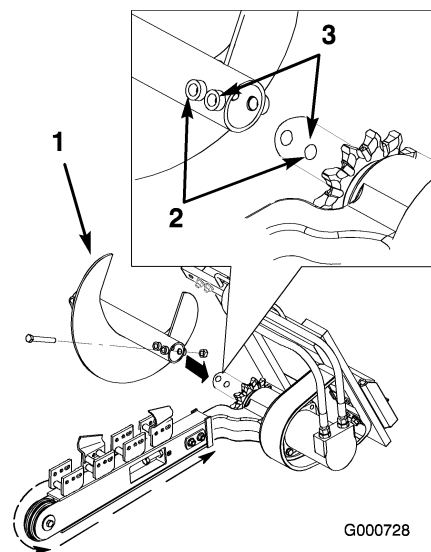
## Installing the Spoils Auger

### No Parts Required

### Procedure

**Important:** Failing to position the spoils auger correctly may damage the trencher.

1. Start the engine and raise the loader arms slightly (2 to 3 inches).
2. Stop the engine and remove the key.
3. Using the bolt and nut you removed previously, connect the spoils auger to the auger shaft. Pair the hole farthest from the auger blade, in the end of the auger with 2 holes, with the inner hole on the shaft (Figure 2).



**Figure 2**

1. Spoils auger
2. Hole position for a 4 inch chain.
3. Hole position for a 6 inch chain.

4. Torque the bolt and nut to 75 ft-lb. (101 N·m).
5. Lower the loader arms.



**Count on it.**