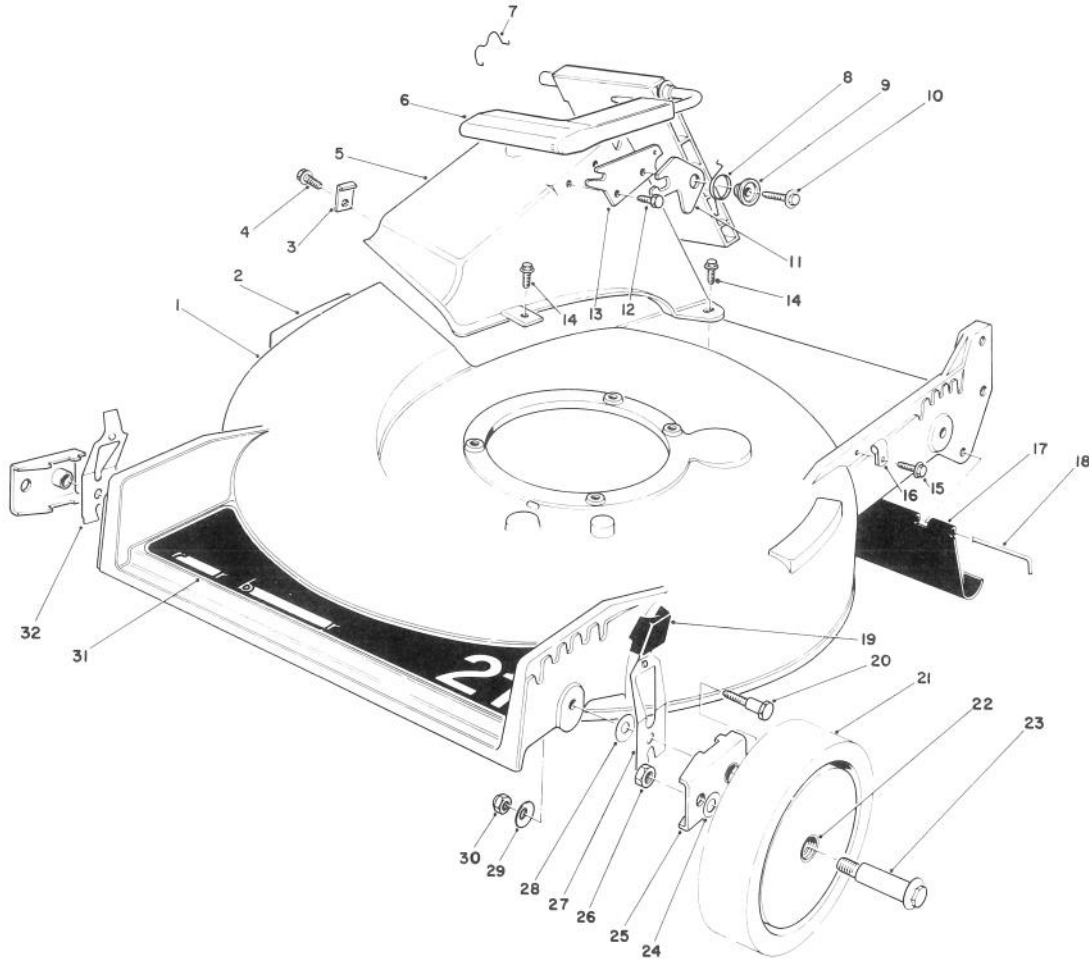


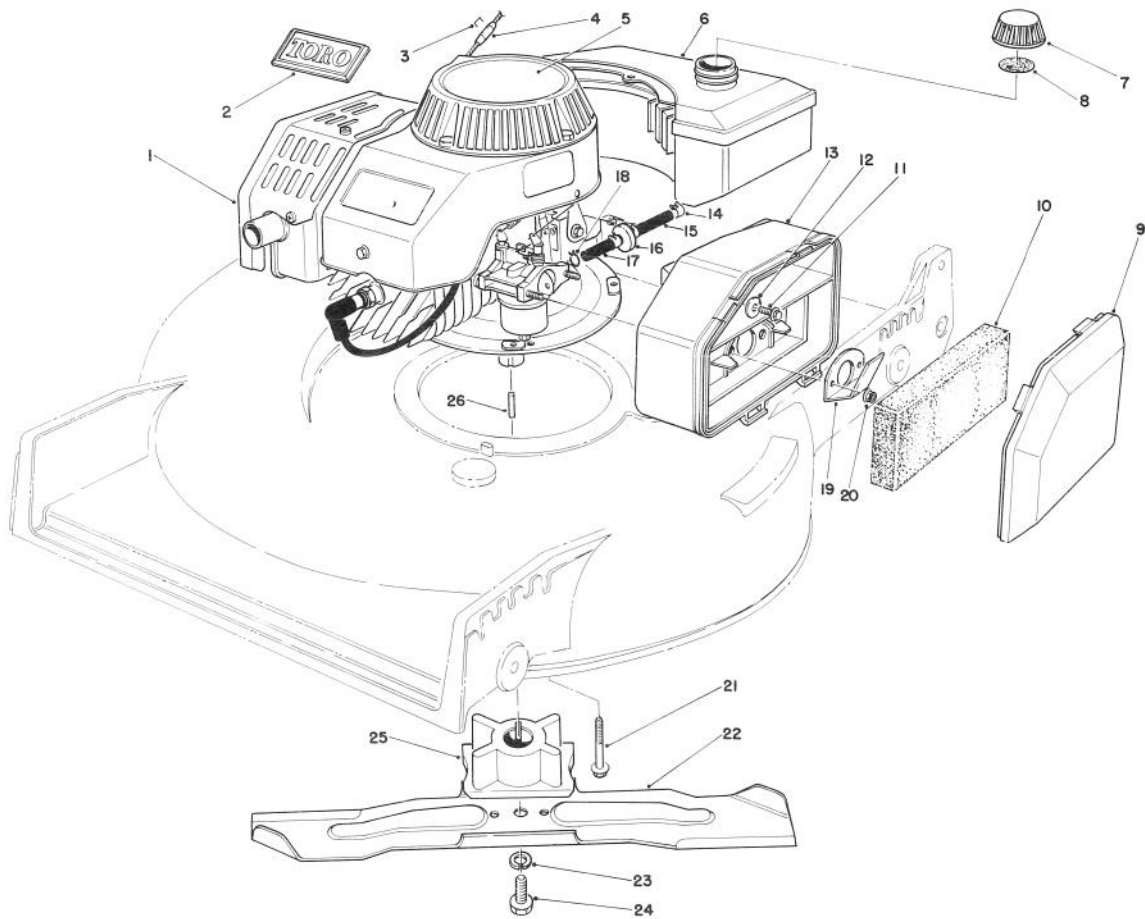


MODEL NO. 20581-7000001 & UP

**PARTS
CATALOG**
21" H.P. REAR BAGGER

HOUSING ASSEMBLY

Ref. No.	Part No.	Description	No. Used
1	12-2699	Housing (Incl. Ref. #2)	1
2	39-5770	Decal — Danger	1
3	47-6540	Clip — Tunnel	1
4	12-3270	Screw — Thread Forming Hex Washer Hd.	1
5	46-3500	Tunnel — Discharge	1
6	51-0200	Discharge Door Assembly	1
7	47-5840	Retainer — Door	1
8	33-4860	Spring — Torsion	1
9	43-4840	Spacer — Latch	1
10	46-8091	Screw — Self Tapping Hex Washer Hd.	1
11	42-4010	Latch — Safety	1
12	46-8090	Screw — Self Tapping	1
13	23-1040	Plate — Latch	1
14	46-6811	Screw — Self Tapping	3
15	12-5450	Screw — Thread Forming Hex Washer Hd.	1

Ref. No.	Part No.	Description	No. Used
16	2412-83	Cable Clamp	1
17	44-0580	Shield — Trailing	1
18	33-3208	Rod — Shield	1
19	25-7740	Knob Arm	4
20	44-5270	Screw — Pivot	4
21	11-9509	Wheel & Tire Assembly (Incl. Ref. #22)	4
22	27-6250	Bushing	8
23	27-6230	Wheel Bolt	4
24	40-1940	Washer — Wheel Bolt	4
25	47-2940	Pivot Arm Assembly	4
26	52-3620	Nut — Lock	4
27	52-7480	Spring Arm Assembly L.H.	2
28	5-4460	Washer — Pivot	4
29	3290-456	Washer — Belleville	4
30	3296-29	Nut — Lock	4
31	44-0450	Decal — 21" Rear Bagger	1
32	52-7490	Spring Arm Assembly R.H.	2

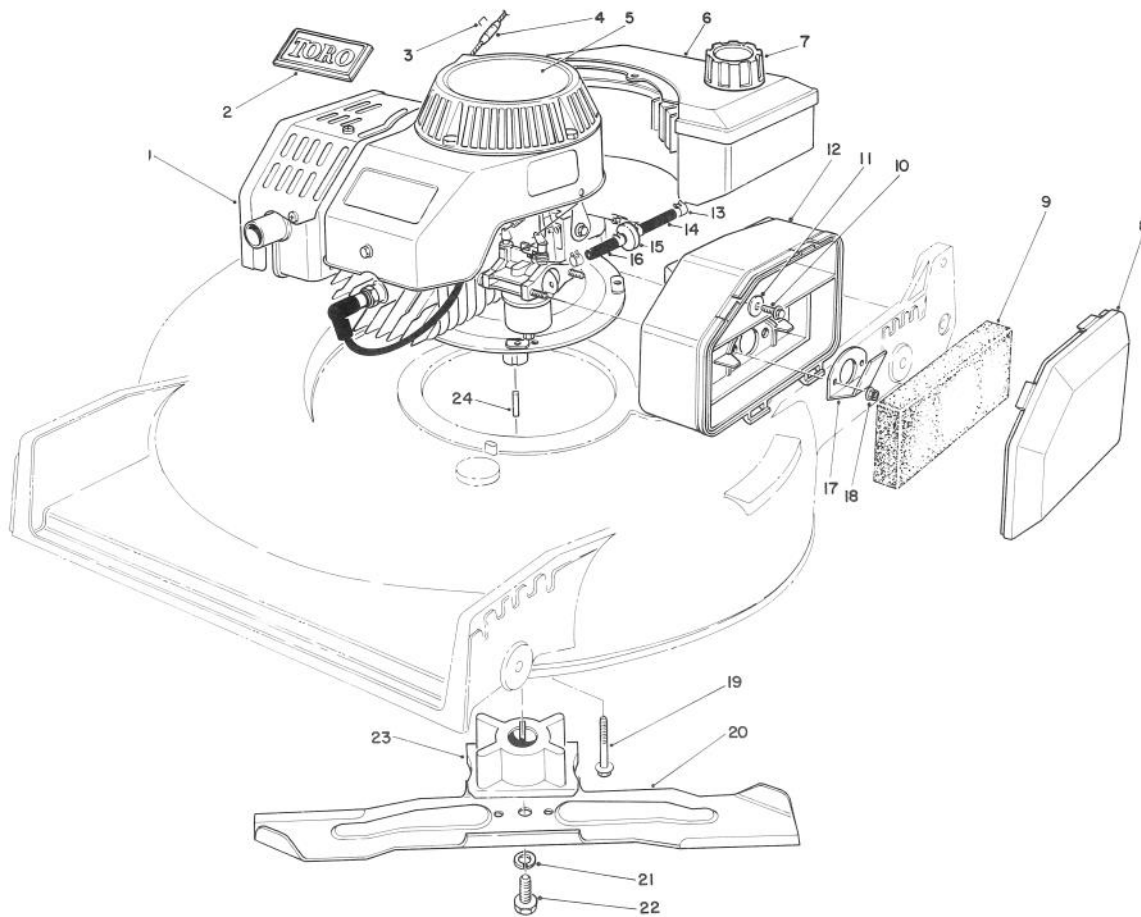


**ENGINE ASSEMBLY
(MODEL NO. 47PF5)
(used on units with Serial No. 7000001 - 7001110)**

Ref. No.	Part No.	Description	No. Used
1	59257	Engine	1
2	46-8290	Plate — Toro	1
3*		Staple	1
4	47-2480	Stop — Rope	1
5	57-9870	Decal — Recoil	1
6	81-0041	Gas Tank Assembly	1
7	42-0681	Gas Cap Assembly (Incl. Ref. #8)	1
8	20-4620	Gasket — Gas Cap	1
9	81-0120	Cover — Air Cleaner	1
10	81-0100	Foam Element — Air Cleaner	1
11	51-2690	Screw — Hex Washer Hd.	1
12	3256-16	Washer — Plain Flat	1
13	81-0110	Air Cleaner	1

Ref. No.	Part No.	Description	No. Used
14	2412-95	Clamp — Fuel Line	3
15	51-3216	Fuel Line	1
16	56-6360	Filter — Fuel	1
17	51-3215	Fuel Line	1
18	81-0090	Clamp — Fuel Line	1
19	81-0140	Deflector	1
20	49-7810	Nut — Lock	2
21	3234-11	Screw — Cap Hex Flange Hd.	4
22	42-1000	Blade 21"	1
23	3253-22	Washer — Lock	1
24	26-0670	Screw — Blade	1
25	46-7810	Retainer Blade	1
26	7-0036	Key — Square	1

*Obtain Locally

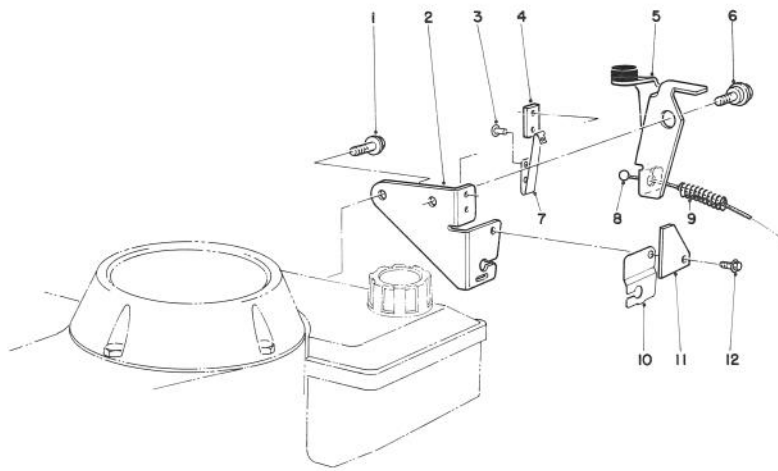


**ENGINE ASSEMBLY
(MODEL NO. 47PG6)
(used on units with Serial No. 7001111 & up)**

Ref. No.	Part No.	Description	No. Used
1	51-0412	Engine	1
2	46-8290	Plate — Toro	1
3*		Staple	1
4	47-2480	Stop — Rope	1
5	57-9870	Decal — Recoil	1
6	81-0042	Gas Tank Assembly	1
7	55-3575	Gas Cap	1
8	81-0120	Cover — Air Cleaner	1
9	81-0100	Foam Element — Air Cleaner	1
10	51-2690	Screw — Hex Washer Hd.	1
11	3256-16	Washer — Plain Flat	1
12	81-0110	Air Cleaner	1

Ref. No.	Part No.	Description	No. Used
13	2412-95	Clamp — Fuel Line	4
14	51-3215	Fuel Line	1
15	56-6360	Filter — Fuel	1
16	51-3216	Fuel Line	1
17	81-0140	Deflector	1
18	49-7810	Nut — Lock	2
19	3234-11	Screw — Cap Hex Flange Hd.	4
20	42-1000	Blade 21"	1
21	3253-22	Washer — Lock	1
22	26-0670	Screw — Blade	1
23	46-7810	Retainer Blade	1
24	7-0036	Key — Square	1

*Obtain Locally

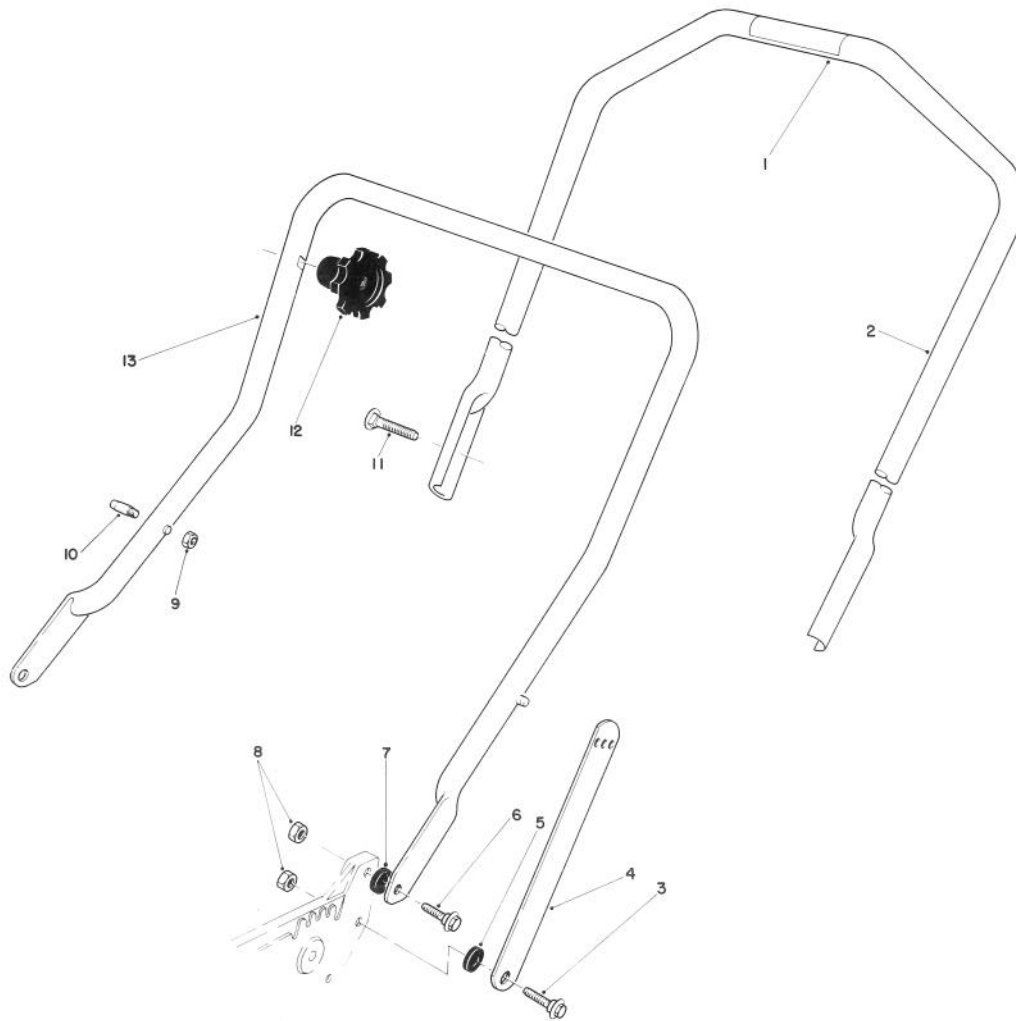


BRAKE ASSEMBLY

Ref. No.	Part No.	Description	No. Used
1	46-0790	Screw — Self Tapping	1
2	53-4620	Plate — Mounting	1
3	3290-459	Rivet	2
4	60-9020	Strap — Insulation	1
5	53-4770	Brake Plate Assembly	1
6	56-6190	Screw — Shoulder, Metric	1
7	60-9010	Strap — Ground	1

Ref. No.	Part No.	Description	No. Used
8	56-6092	Cable — Brake	1
9	56-6370	Spring — Compression	1
10	53-4610	Clamp — Cable	1
11	53-4690	Stop — Ground Strap	1
12	12-5450	Screw — Self Tapping	1
*	12-4599	Mounting Plate Assembly (Incl. Ref. #2-4, & 7)	1

*Not Illustrated

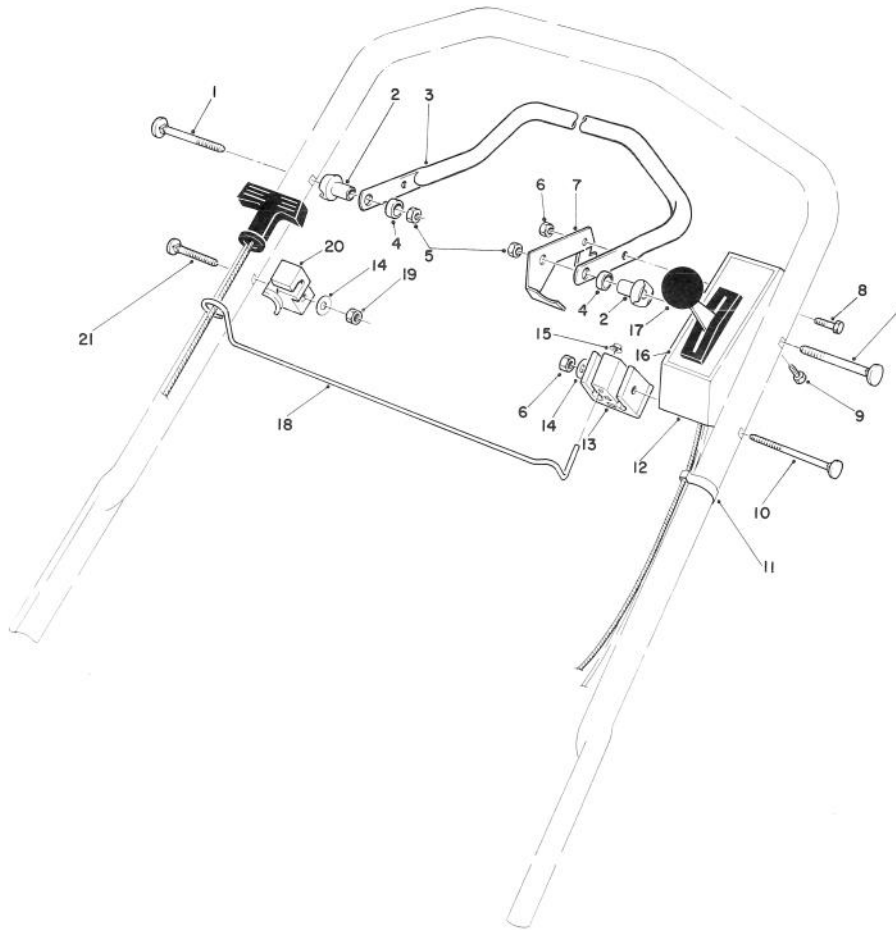


HANDLE ASSEMBLY

Ref. No.	Part No.	Description	No. Used
1	49-1770	Decal — Danger	1
2	12-1559	Handle — Upper (Incl. Ref. #1)	1
3	27-7210	Screw — Shoulder	2
4	43-1370	Latch — Handle	2
5	3-3287	Spacer — Handle Latch	2
6	27-7211	Screw — Shoulder	2
7	55-8060	Spacer	2

Ref. No.	Part No.	Description	No. Used
8	3296-29	Nut — Lock	4
9†	3296-47	Nut — Lock	2
10†	49-2750	Pin — Handle	2
11	17-9421	Screw — Handle	2
12	19-4050	Knob — Handle Release	2
13	43-1361	Lower Handle	1

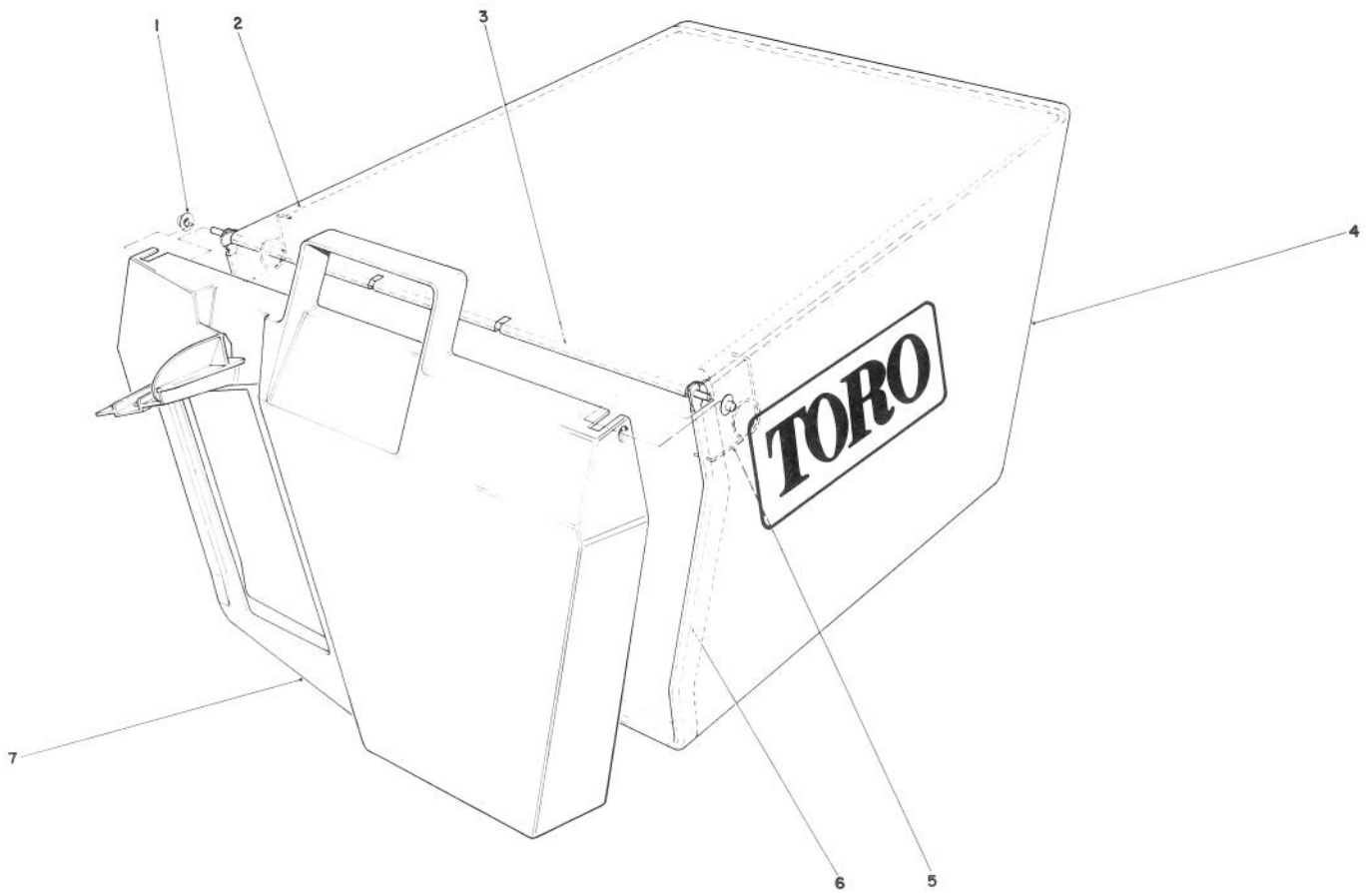
† Service Replacement Parts



CONTROL ASSEMBLY

Ref. No.	Part No.	Description	No. Used
1	17-9421	Screw — Handle	2
2	49-1630	Support — Spacer	2
3	52-7430	Control Bar Assembly	1
4	256-276	Spacer	2
5	3296-58	Nut — Lock	2
6	3296-42	Nut — Lock	2
7	46-7950	Lever — Control	1
8	321-3	Capscrew	1
9	32104-76	Screw — Self Tapping Acorn Hd.	2
10	46-6434	Screw — Handle	1
11	218-465	Clip — Conduit	2
12	11-6749	Cover — Control (Incl. Ref. #16)	1

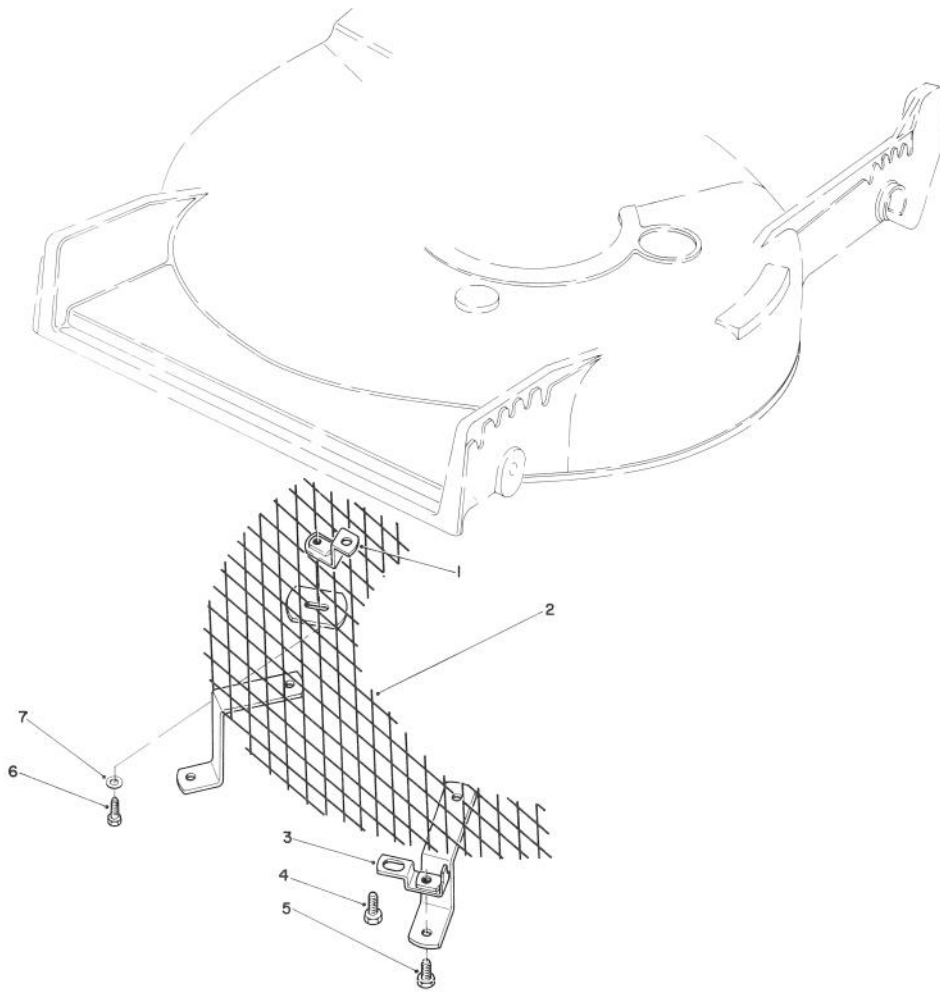
Ref. No.	Part No.	Description	No. Used
13	46-6980	Support Cable	1
14	3256-22	Washer — Plain	2
15	3290-337	Push Nut	1
16	49-7790	Decal — Control Cover	1
17	46-6010	Control — Throttle (Bend Type 2) (Sheath Lg. 47-5/8 inch) (Wire Lg. 2-1/4 inch)	1
18	46-7970	Rod — Rope	1
19	3296-8	Nut — Lock	1
20	46-7960	Catch — Rod	1
21	46-6430	Screw — Handle	1



GRASS BAG ASSEMBLY NO. 11-0159

Ref. No.	Part No.	Description	No. Used
1	3290-422	Push Nut	2
2	42-4030	Bag Frame Upper	1
3	33-4820	Hinge Bag Door	1
4	8-2759	Grass Bag	1

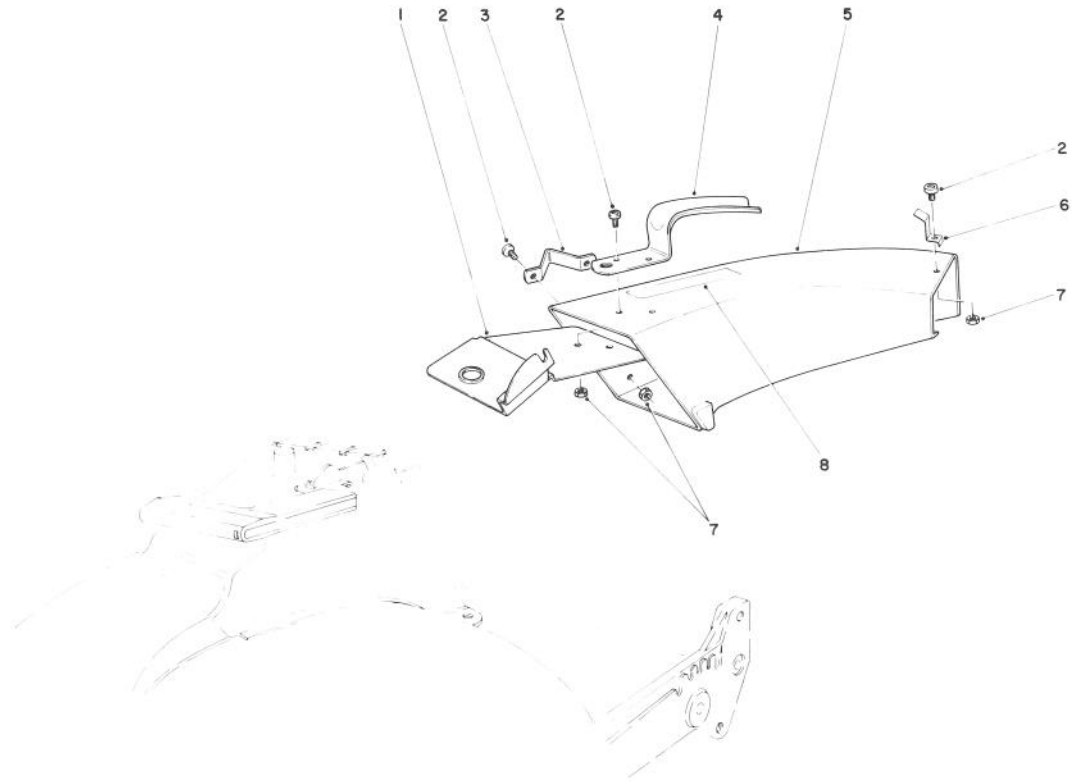
Ref. No.	Part No.	Description	No. Used
5	36-6910	Spring	2
6	43-0030	Frame Bag	1
7	36-1331	Door Grass Bag	1



LEAF SHREDDER KIT MODEL NO. 59157 (Optional)

Ref. No.	Part No.	Description	No. Used
1	47-6260	Bracket	1
2	47-6230	Screen	1
3	46-4880	Mounting Bracket	2
4	32144-11	Screw — Self Tapping	3

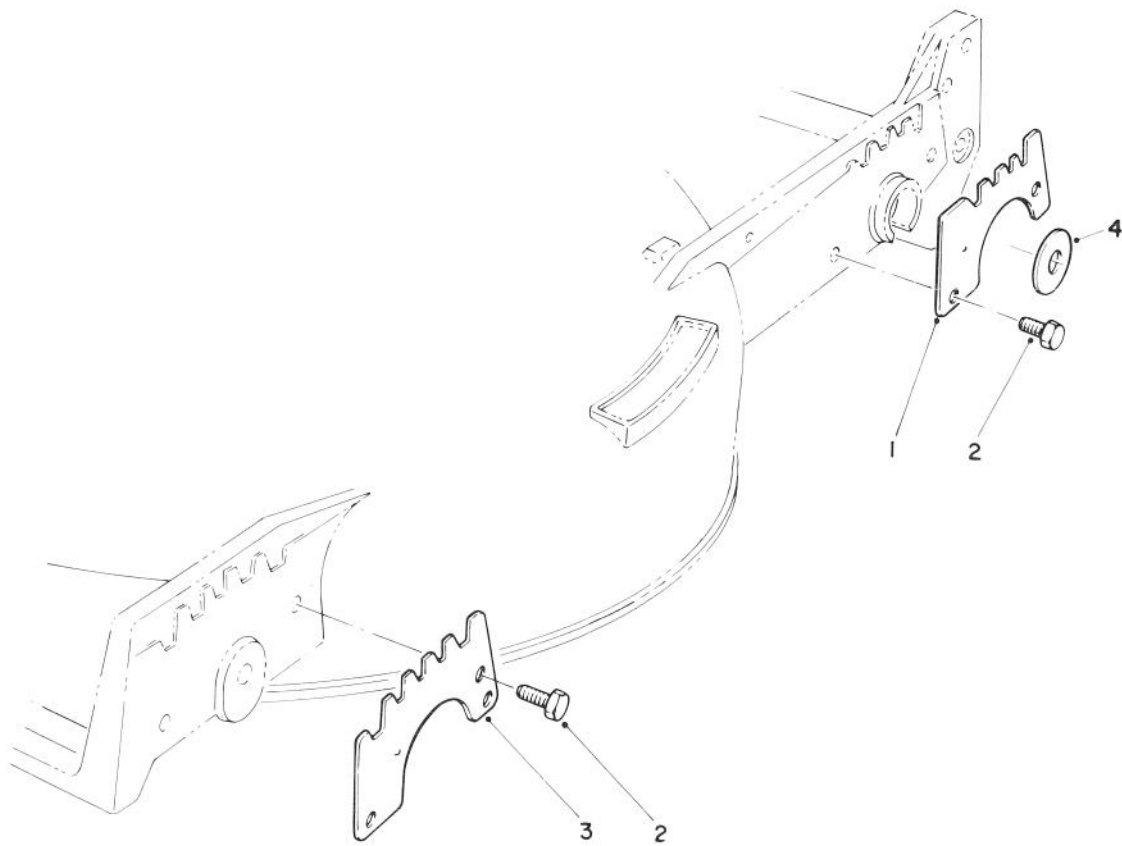
Ref. No.	Part No.	Description	Ref. No.
5	321-3	Capscrew, Hex Hd.	2
6	321-5	Capscrew, Hex Hd.	1
7	3256-1	Washer	1



SIDE DISCHARGE CHUTE MODEL NO. 59108 (Optional)

Ref. No.	Part No.	Description	No. Used
1	44-2330	Plate — Discharge Chute	1
2	3251-3	Screw	5
3	46-6580	Bracket — Side	1
4	42-1340	Handle — Grass Chute	1
5	11-7149	Chute — Discharge (Incl. Ref. #8)	1

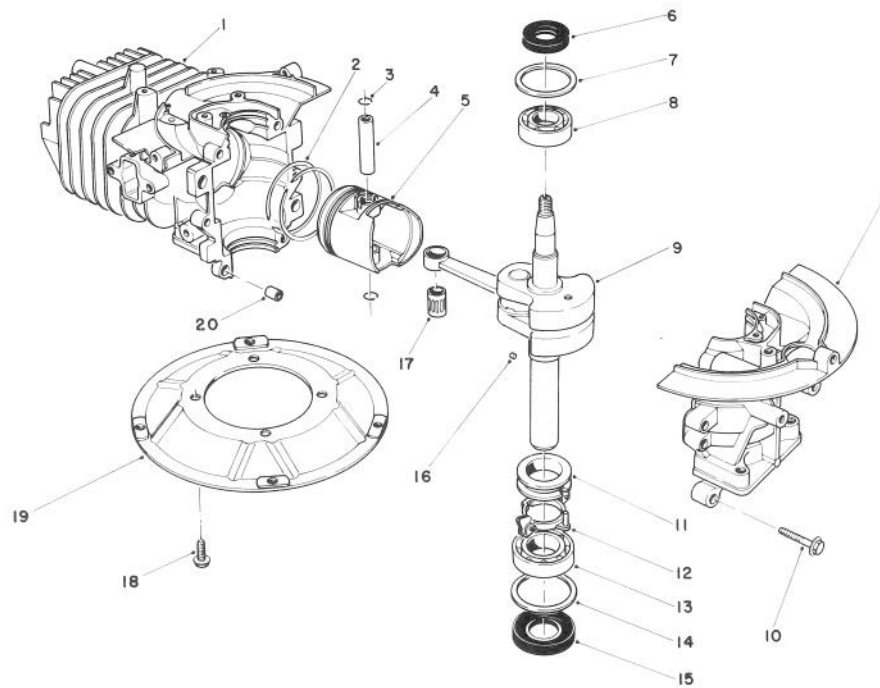
Ref. No.	Part No.	Description	No. Used
6	49-2630	Clip — Cable Stop	1
7	3296-12	Locknut	5
8	39-9120	Decal — Caution	1



WEAR PLATE KIT NO. 49-4080 (Optional)

Ref. No.	Part No.	Description	No. Used
1	49-4070	Plate — Wear, Rear	2
2	32104-17	Screw — Thread Forming	8

Ref. No.	Part No.	Description	No. Used
3	43-5050	Plate — Wear, Front	2
4	33-0390	Washer	2

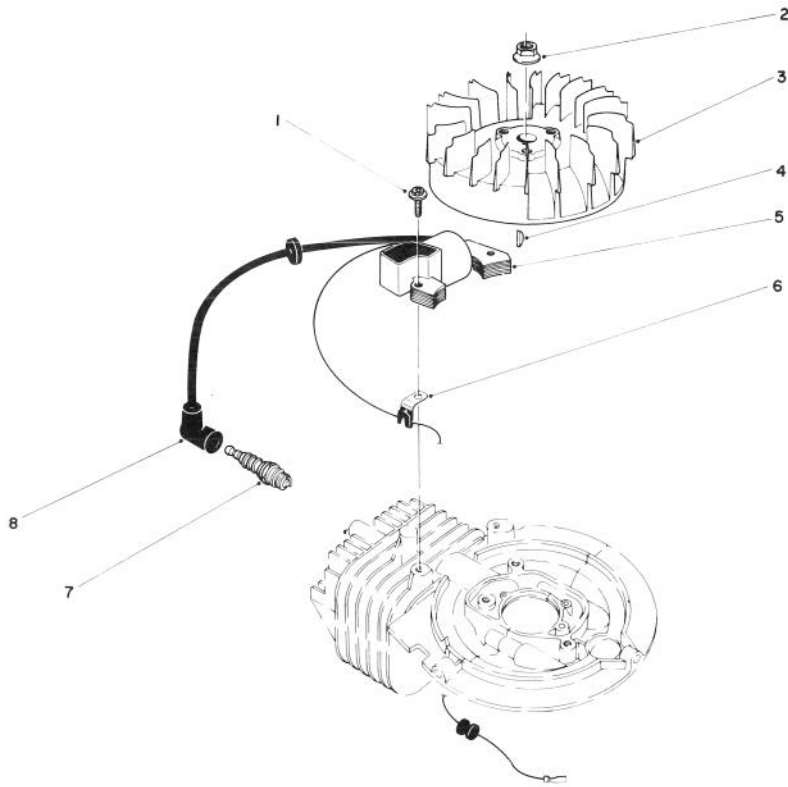


ENGINE ASSEMBLY (ENGINE MODEL NO. 47PF5 & 47PG6)

Ref. No.	Part No.	Description	No. Used
1	81-2800	Crankcase/Cylinder Assembly	1
2	81-0590	Ring Set	1
3	81-0620	Circlip	2
4	81-0600	Pin — Wrist	1
5	81-0580	Piston (58 mm)	1
6	81-0720	Oil Seal — Upper	1
7	81-0710	Thrust Washer — Upper	1
8	81-0690	Bearing — Upper (20 mm)	1
9	81-4600	Crankshaft/Connecting Rod Assembly	1
10	81-0540	Bolt (30 mm Lg.)	6

Ref. No.	Part No.	Description	No. Used
11	81-0770	Spacer — Governor	1
12	81-0750	Bracket — Governor Arm	1
13	81-0700	Bearing — Lower (25 mm)	1
14	81-0730	Thrust Washer — Lower	1
15	81-0740	Oil Seal — Lower	1
16	81-0760	Pin — Crankshaft	1
17	81-0610	Bearing — Wrist Pin	1
18	81-0570	Bolt (20 mm Lg.)	4
19	81-0560	Plate — Mounting	1
20	81-0520	Pin — Crankcase	2
*	12-5489	Short Block Assembly	1

*Not Illustrated

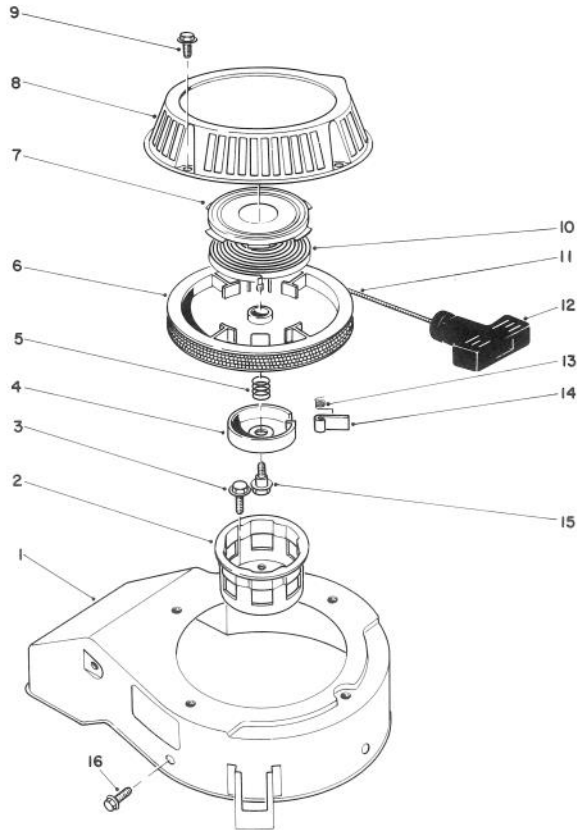


IGNITION ASSEMBLY (ENGINE MODEL NO. 47PF5 & 47PG6)

Ref. No.	Part No.	Description	No. Used
1	81-2050	Capscrew — Allenhead	2
2	81-1330	Nut	1
3	81-2810	Flywheel — Magneto	1
4	81-2370	Key — Flywheel	1
5	81-2820	Coil/Ignition Assembly	1

Ref. No.	Part No.	Description	No. Used
6	81-1480	Clamp	1
7	81-0181	Spark Plug	1
8	81-1500	Cover — Spark Plug	1
*	41-7650	Puller — Flywheel	1

*Not Illustrated

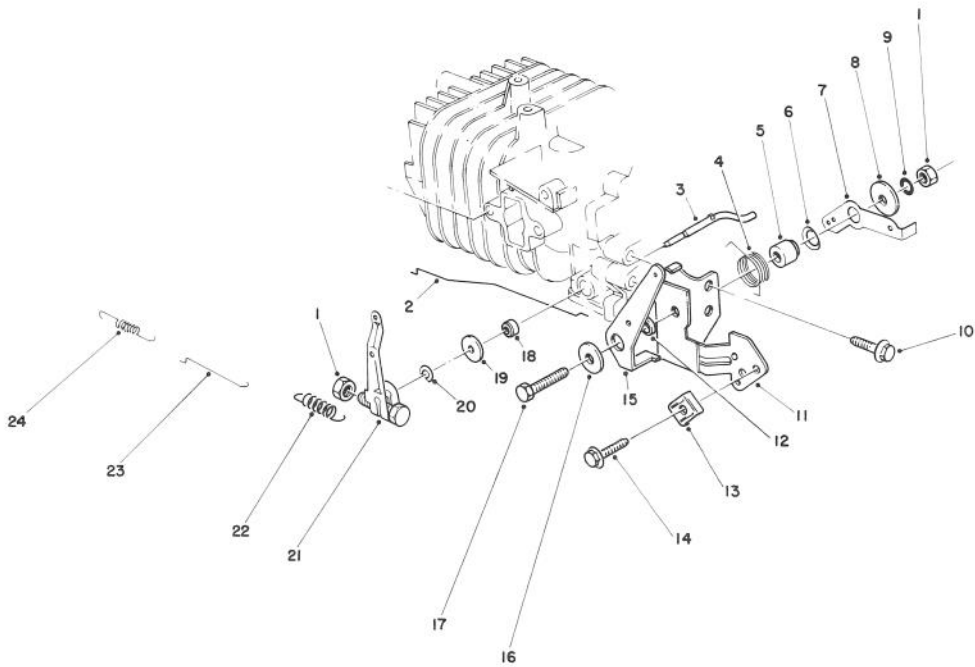


RECOIL ASSEMBLY (ENGINE MODEL NO. 47PF5 & 47PG6)

Ref. No.	Part No.	Description	No. Used
1	81-2070	Cover — Cooling Fan	1
2	81-1290	Cup — Starter Pulley	1
3	81-1300	Bolt (16 mm Lg.)	3
4	81-1250	Retainer — Dog	1
5	81-1240	Spring — Compression	1
6	81-1210	Reel — Rope Pulley	1
7		Retainer — Recoil Spring	1
8	81-2090	Case — Recoil	1
9	81-1280	Bolt (10 mm Lg.)	4
10		Spring — Recoil	1
11	81-1270	Rope	1

Ref. No.	Part No.	Description	No. Used
12	81-1630	Handle — Recoil	1
13	81-1220	Spring — Dog	1
14	81-1230	Dog	1
15	81-1260	Bolt — Shoulder	1
16	81-1170	Bolt — Self Tapping (15 mm Lg.)	3
*	81-2040	Starter Assembly (Incl. Ref. #4-8, 10-15)	1
*	81-2300	Spring & Retainer (Incl. Ref. #7 & 10)	1

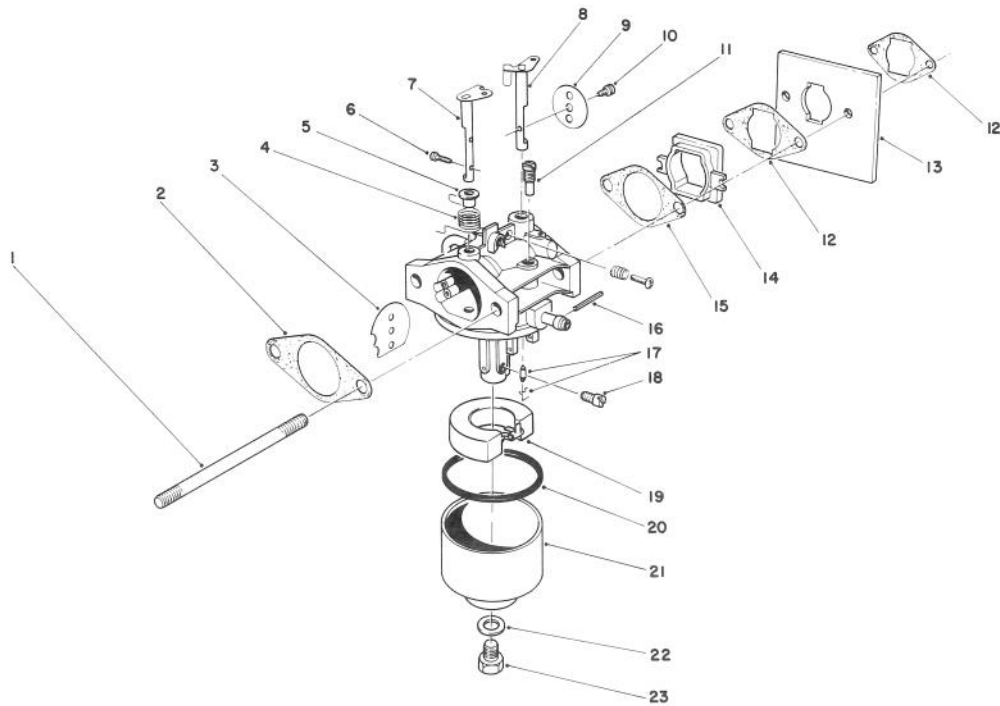
*Not Illustrated



GOVERNOR ASSEMBLY (ENGINE MODEL NO. 47PF5 & 47PG6)

Ref. No.	Part No.	Description	No. Used
1	81-0900	Nut	2
2	81-1720	Rod — Choke	1
3	81-0840	Shaft — Governor	1
4	81-2460	Spring — Choke Control Lever	1
5	81-1770	Spacer — Governor Spring Lever	1
6	81-1820	Washer — Governor Spring Lever	1
7	81-2850	Lever — Governor Spring	1
8	81-1750	Washer — Choke Control Lever	1
9	81-1450	Washer — Lock	1
10	81-1170	Bolt — Self Tapping (15 mm Lg.)	1
11	81-2420	Bracket — Throttle Control	1

Ref. No.	Part No.	Description	No. Used
12	81-2470	Spacer — Choke Control Lever	1
13	81-2430	Clamp — Cable	1
14	50-0130	Bolt — Cable Clamp	1
15	81-1710	Lever — Choke Control	1
16	50-0760	Washer — Choke Control Lever	1
17	81-1730	Bolt — Throttle Control Bracket	1
18	81-0850	Oil Seal — Governor Shaft	1
19	81-0860	Washer	1
20	81-0870	E-Ring	1
21	81-2840	Arm — Governor	1
22	81-2830	Spring — Governor	1
23	81-0910	Rod — Carburetor	1
24	81-0920	Spring — Carburetor Rod	1

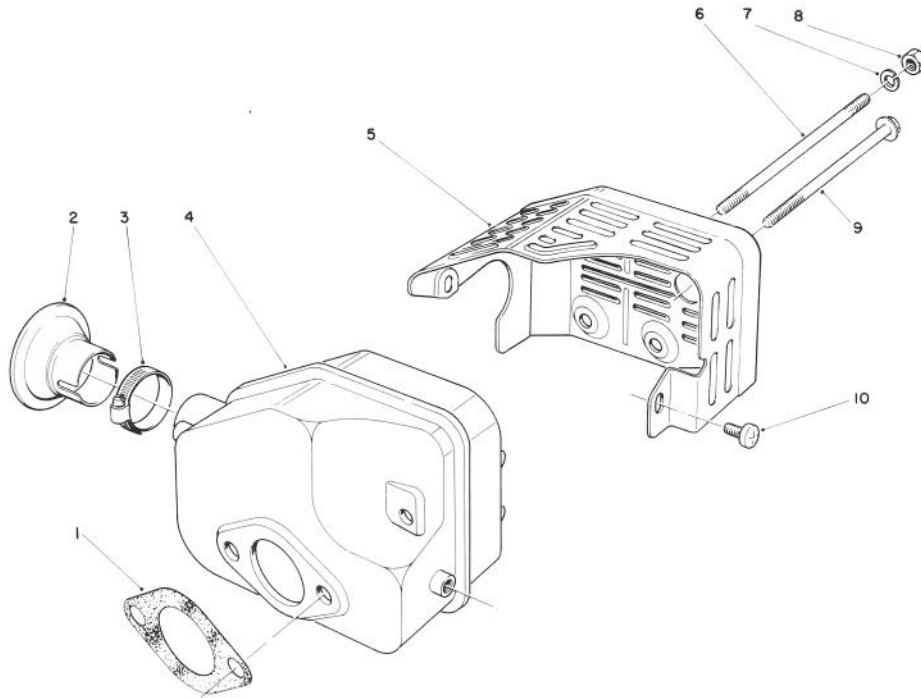


CARBURETOR ASSEMBLY (ENGINE MODEL NO. 47PF5 & 47PG6)

Ref. No.	Part No.	Description	No. Used
1	81-2240	Stud Bolt — Carburetor	2
2	81-0090	Gasket	1
3	81-0240	Valve — Choke (used on Model No. 47PF5)	1
3	81-4950	Valve — Choke (used on Model No. 47PG6)	1
4	81-0230	Spring — Choke	1
5	81-0220	Bushing — Choke Valve	1
6	81-2160	Screw	2
7	81-1950	Shaft — Choke	1
8	81-0250	Shaft — Throttle	1
9	81-0260	Valve — Throttle	1
10	81-0270	Screw — Throttle Valve	1
11	81-1030	Jet — Pilot # (40)	1
12	81-2320	Gasket — Shield	2
13	81-2330	Shield — Carburetor	1
14	81-2190	Insulator — Carburetor	1
15	81-0780	Gasket	1
16	81-0980	Pin	1
17	81-1600	Needle Valve/Spring Wire (used on Model No. 47PF5)	1

Ref. No.	Part No.	Description	No. Used
17	81-4910	Needle Valve/Spring Wire (used on Model No. 47PG6)	1
18	81-1940	Jet — Main # (76.3)	1
*	81-2340	Jet — Main # (72.5) High Alt., Above 6,000 Ft. (Optional)	1
19	81-0970	Float	1
20	81-1010	Gasket — Float Bowl	1
21	81-1610	Bowl — Float	1
22	81-1020	Gasket — Bowl Screw	1
23	81-1000	Screw — Bowl	1
*	81-1960	Carburetor Kit (Incl. Ref. #2, 15, 17, 20 & 22) (used on Model No. 47PF5)	1
*	12-6379	Carburetor Kit (Incl. Ref. #2, 15, 17, 20 & 22) (used on Model No. 47PG6)	1
*	81-1930	Carburetor Assembly (used on Model No. 47PF5)	1
*	81-4900	Carburetor Assembly (used on Model No. 47PG6)	1

*Not Illustrated



MUFFLER ASSEMBLY (ENGINE MODEL NO. 47PF5 & 47PG6)

Ref. No.	Part No.	Description	No. Used
1	81-1080	Gasket — Muffler	1
2*	81-0200	Spark Arrester	1
3†		Clamp	1
4	81-1090	Muffler	1
5	81-2450	Cover — Muffler	1

Ref. No.	Part No.	Description	No. Used
6	81-1100	Bolt	2
7	81-1120	Washer — Lock	2
8	81-1110	Nut	2
9	81-1150	Bolt — Self Tapping	1
10	81-1140	Screw — Phillips Hd.	2

*Optional Equipment

†Obtain Locally