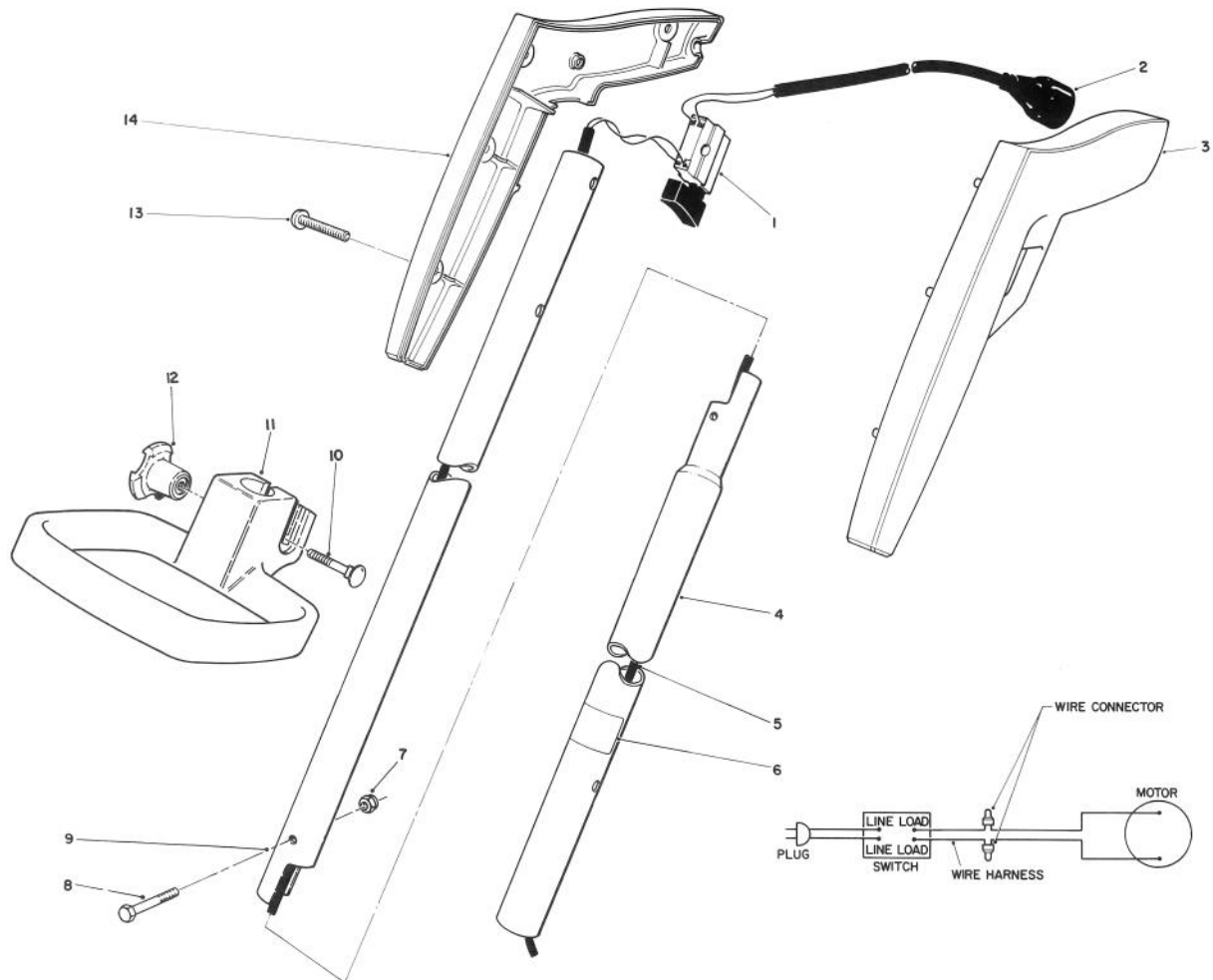


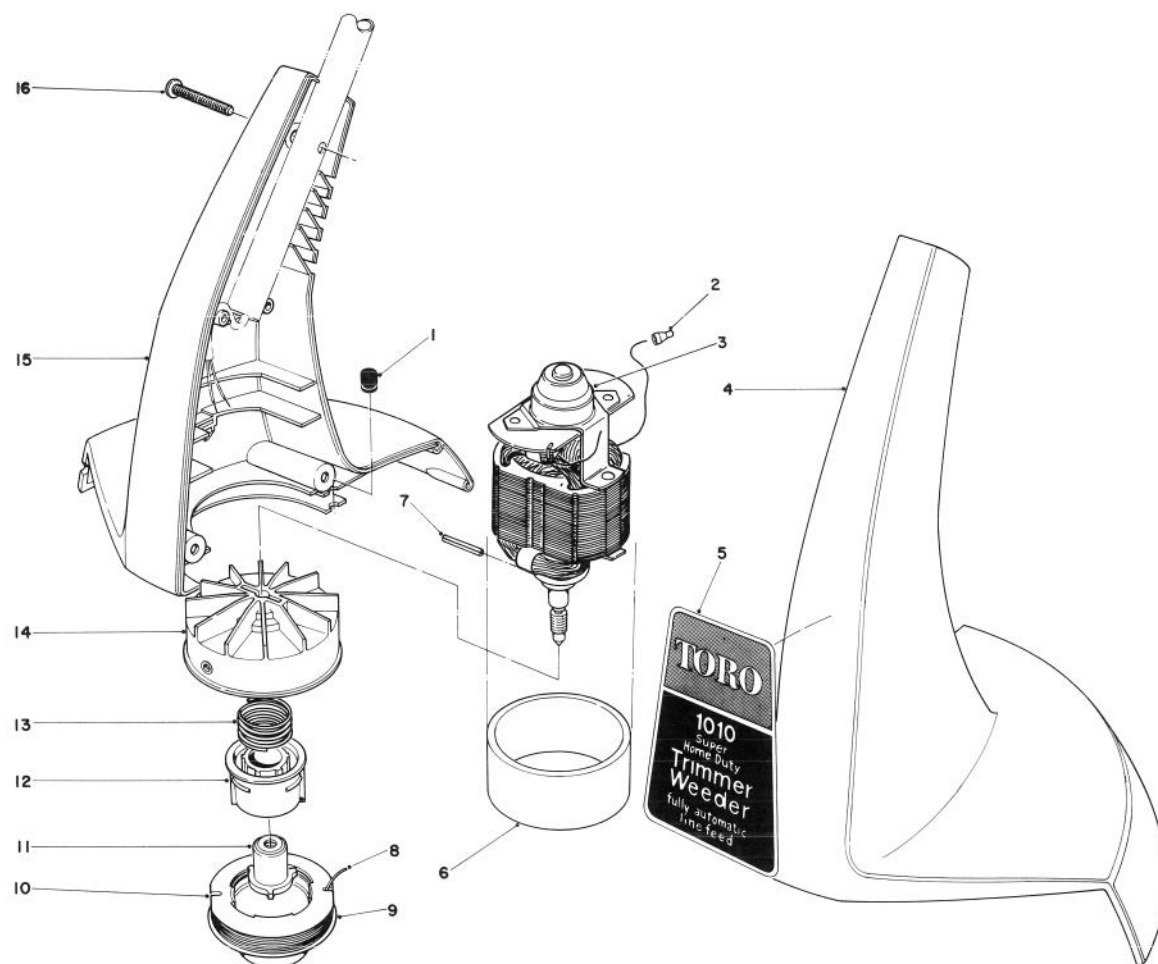


MODEL NO. 51255-7000001 & UP

**PARTS
CATALOG**
TORO TRIMMER 1010

HANDLE ASSEMBLY

| Ref. No. | Part No. | Description | No. Used |
|----------|----------|--------------------------------|----------|
| 1 | 29-7660 | Switch — Single Speed | 1 |
| 2 | 46-8850 | Plug — Pig Tail | 1 |
| 3 | 33-8810 | Grip L.H. | 1 |
| 4 | 62-1860 | Tubing — Lower Extension | 1 |
| 5 | 62-1812 | Wire Harness | 1 |
| 6 | 34-3270 | Decal — Serial No. Replacement | 1 |
| 7 | 3296-12 | Locknut | 1 |

| Ref. No. | Part No. | Description | No. Used |
|----------|-----------|--|----------|
| 8 | 33-8950 | Screw — Machine Hex Hd. | 1 |
| 9 | 62-1800 | Tubing — Upper Extension | 1 |
| 10 | 33-5790 | Carriage Bolt | 1 |
| 11 | 61-8900 | Handle — Adjustable | 1 |
| 12 | 62-1920 | Knob — Adjustable | 1 |
| 13 | 32104-121 | Screw — Cross Recess Pan Head Thread Forming | 4 |
| 14 | 33-8820 | Grip R.H. | 1 |



MOTOR AND HOUSING ASSEMBLY

| Ref. No. | Part No. | Description | No. Used |
|----------|----------|--|----------|
| 1 | 33-8710 | Grommet | 1 |
| 2 | 218-496 | Electric Connector | 2 |
| 3 | 34-2580 | Motor | 1 |
| 4 | 34-4390 | Housing, L.H. | 1 |
| 5 | 34-5740 | Decal — Housing | 1 |
| 6 | 34-4290 | Dampening Sleeve | 1 |
| 7 | 32121-88 | Coil Pin | 1 |
| 8 | 88011 | 30' Coil — .050 Cutting Line In Spool | 1 |
| 9 | 44-5520 | Spool Cap | 1 |
| 10 | 88015 | 30', .050 Dia. Cutting Line Prewound On Spool | 1 |

| Ref. No. | Part No. | Description | No. Used |
|----------|-----------|--|----------|
| 11 | 34-9100 | Driver — Detent | 1 |
| 12 | 29-8120 | Spool Core | 1 |
| 13 | 29-8230 | Spring — Compression | 1 |
| 14 | 33-8680 | Fan Hub Assembly | 1 |
| 15 | 34-5731 | Housing Assembly, R.H. | 1 |
| 16 | 32104-121 | Cross Recess Pan Hd. Thread Forming Screw | 6 |
| * | 34-2692 | Loose Parts | 1 |
| * | 34-9120 | Alignment Pin | 1 |

*Not Illustrated