



72in Side Discharge Mower Groundsmaster® 3320 and 3280-D

Model No. 30368 - 250000001 and up.

Parts Catalog

Ordering Replacement Parts

To order replacement parts, please supply the part number, the quantity, and the description of each part desired.

Understanding Reference Numbers

Each identified part in an illustration has a reference number. The reference number for a part also appears in the parts list, along with other information about the part.

This catalog uses two special reference number formats, one to indicate parts in a service assembly and another to indicate the quantity of a given part in an illustration.

Service Assembly Reference Numbers

Parts in service assemblies have reference numbers in the form a:b. The a represents the reference number of the entire service assembly and the b represents a sequential number unique to each part within the service assembly.

For example, a wheel assembly might be identified by reference number 6, the tire by 6:1, the valve by 6:2, and the wheel by 6:3. When you order the assembly identified by reference number 6, you receive all parts identified by reference numbers 6:1, 6:2, and 6:3. However, you may also order any part individually. Reference numbers of this type appear in illustrations and in part lists.

Reference Numbers Indicating Quantity

In an illustration, if a reference number indicates more than one part, the reference number has the form nX y. The n represents the quantity of the part, the X is the multiplication symbol, and the y represents the reference number.

For example, in an illustration, the reference number 2X 37 means that two of the parts identified by reference number 37 are indicated.

Contents

Description	Page	Description	Page
Deck, Belt and Pulley Assembly 3	Rubber Deflector Assembly No. 108-2792 9
Deck Decal Assembly No. 107-7281 4	Gearbox Assembly No. 106-4355 10
Caster Arm Assembly 5	Lift Arm Assembly 11
Spindle and Blade Assembly 6	LH Lift Arm Assembly No. 108-1977 12
Spindle Assembly No. 108-1957 7	RH Lift Arm Assembly No. 108-1947 13
Gearbox, Baffle and Cover Assembly 8	Attachments and Accessories List 14

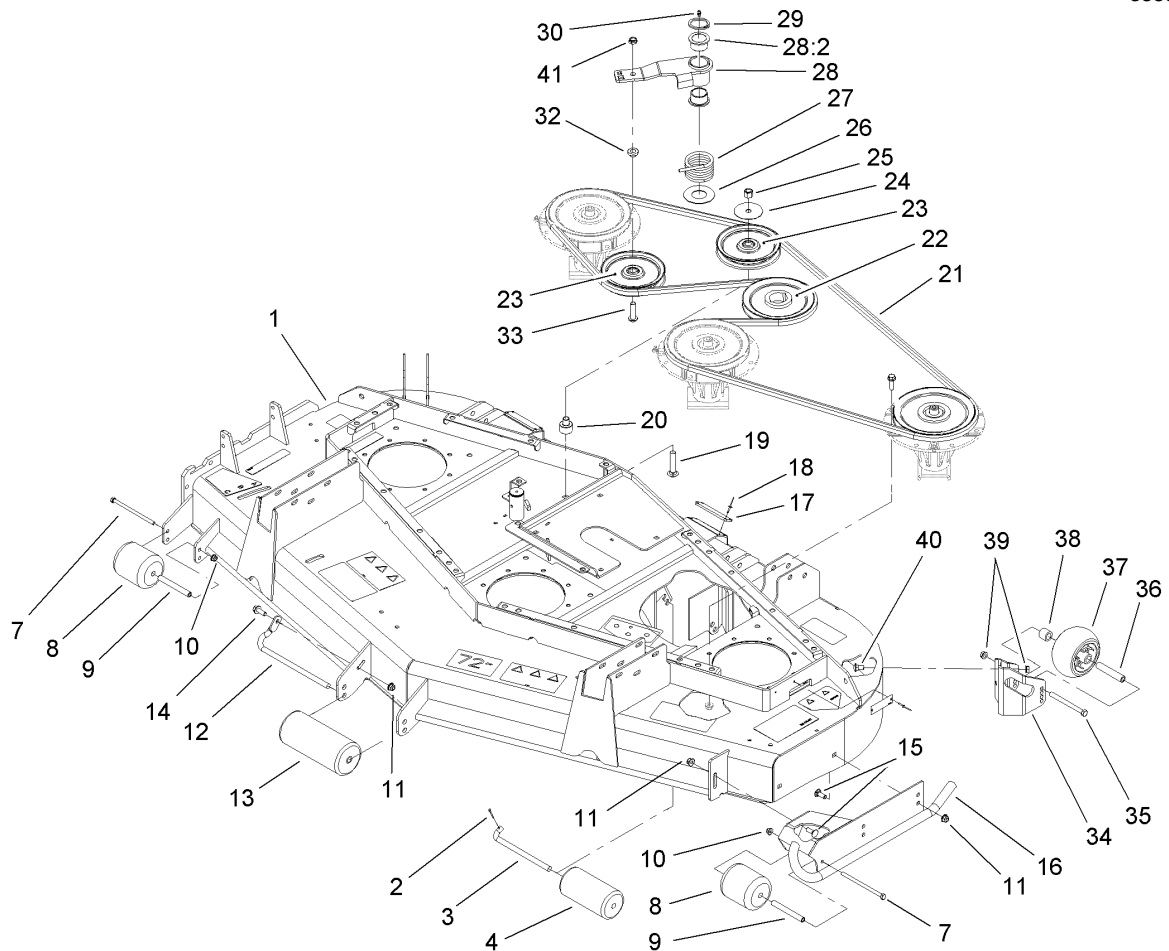
Part Description Abbreviations

Part descriptions in this catalog may include the following abbreviations.

AR. as required	HWHTF. hex washer head thread forming
ASM. assembly	HYD. hydraulic
BBC. blade brake clutch	INC. incorporated
CARR. carriage	LH. left hand
DEG. degrees	NI. nylon insert
EXT. external	NPTF. national pipe thread fine
FH. flat head	PFH. phillips flat head
GA. gauge	PPH. phillips pan head
HF. hex flange	PPHTF. phillips pan head thread forming
HH. hex head	PRH. phillips round head
HHF. hex head flange	PTH. phillips truss head
HHFTF. hex head flange thread forming	PTO. power take off
HJ. hex jam	RH. right hand
HLH. hex lag head	ROPS. roll over protection system
HOC. height-of-cut	SFH. slotted fillister head
HSBH. hex socket button head	SHH. slotted hex head
HSFH. hex socket flat head	SHWH. slotted hex washer head
HSH. hex socket head	SPH. slotted pan head
HWH. hex washer head	

Footnotes

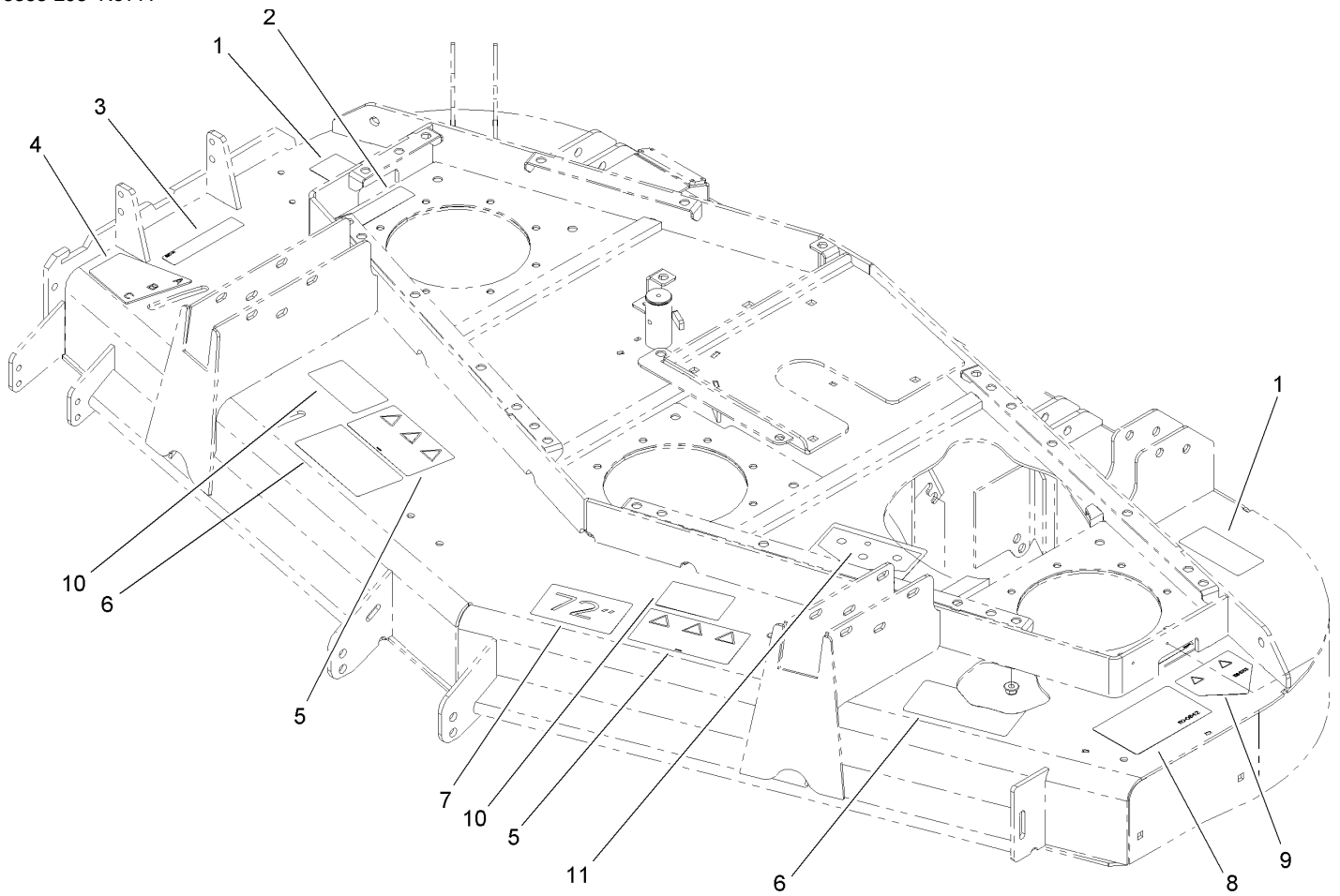
- ❶ Not illustrated



Deck, Belt and Pulley Assembly

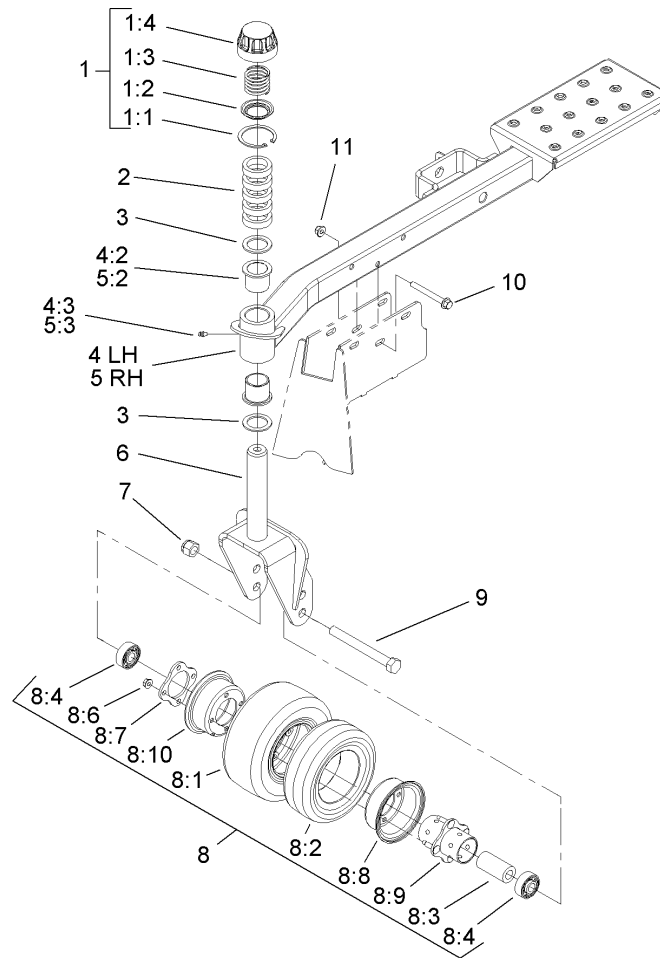
Ref	Part No.	Qty.	Description
1	107-7281	1	Deck ASM
2	3272-11	2	Pin-Cotter
3	40-0340	2	Shaft-Roller, Rear
4	36-1740	2	Roller-Deck
7	322-49	2	Bolt-HH
8	93-4803	2	Roller-Deck
9	105-4549	2	Spacer-Roller
10	104-8300	2	Nut-Flange, NI
11	104-8301	4	Nut-Flange, NI
12	68-6840	1	Shaft-Roller
13	68-6710	1	Roller
14	3234-42	1	Screw-HHF
15	3231-22	3	Screw-CARR
16	108-4379-01	1	LH Skid ASM
17	108-1914	2	Pad-Bumper
18	3269-24	8	Rivet
19	3233-34	1	Screw-CARR
20	108-1908	1	Spacer-Idler
21	108-4393	1	Belt-Hex
22	107-4725	1	Pulley
23	01-268-0160	2	Pulley-Idler
24	100-3102	1	Washer-Flat
25	3296-23	1	Nut-Lock, NI
26	108-1926	1	Washer

Ref	Part No.	Qty.	Description
27	108-1921	1	Spring-Torsion
28	108-1930	1	Idler Arm ASM
28:2	93-4510	2	Bushing-Caster
29	32120-84	1	Ring-Snap, External
30	302-5	1	Fitting-Grease
32	108-1924	1	Spacer-Idler
33	108-1993	1	Screw-HSBH
34	106-7354-01	1	Plate-Roller, LH
35	323-23	1	Screw-HH
36	98-7912	1	Tube-Spanner
37	1-603299	1	Roller-Scalp, Anti
38	98-7913	1	Tube-Spacer
39	3290-357	4	Nut-HHF
40	3231-1	3	Screw-CARR
41	3296-45	1	Nut



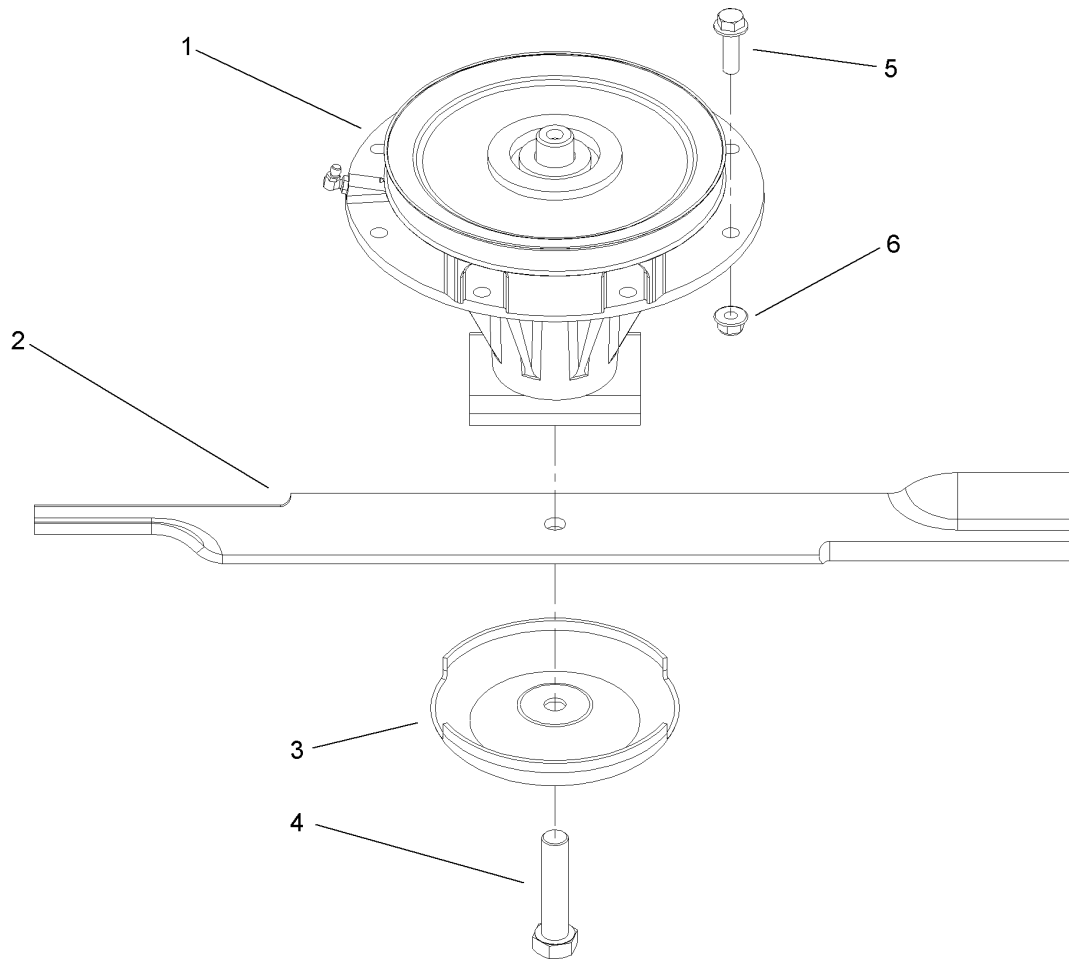
Deck Decal Assembly No. 107-7281

Ref	Part No.	Qty.	Description	
1	108-1986	2	Decal-HOC, Rear	
2	100-6578	4	Decal-Danger	
3	107-2916	1	Decal-Caution	
4	107-1622	1	Decal-Baffle, Adjustment	
5	107-2908	2	Decal-Danger, Combination	
6	100-5622	2	Decal-HOC	
7	57-0280	1	Decal	
8	110-0642	1	Decal-Warning	
9	106-6753	1	Decal-Danger, Ce	
10	93-7818	2	Decal-Torque, Blade Bolt	
11	108-1988	1	Decal-Routing, Belt	
●13	32148-9	7	Insert-Nut	



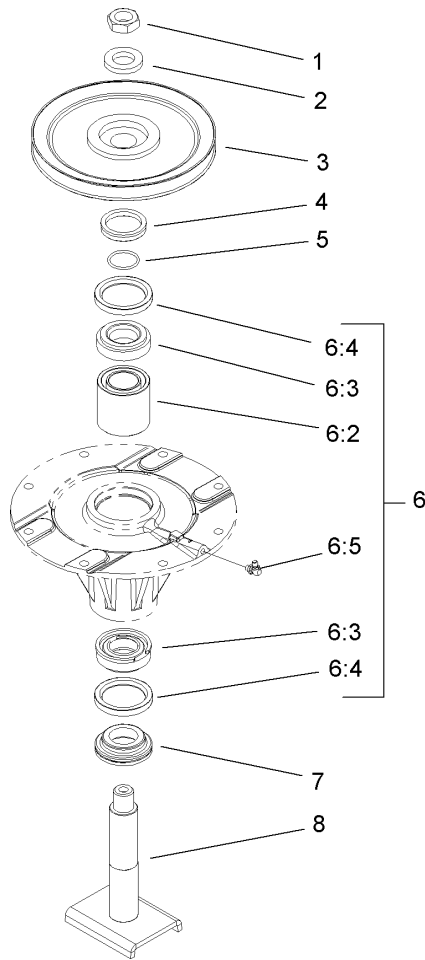
Caster Arm Assembly

Ref	Part No.	Qty.	Description	Ref	Part No.	Qty.	Description
1	92-9727	2	HOC Cap ASM	8:10	95-2741	1	Rim-Wheel, Half
1:1	92-5581	1	Ring-Retaining	9	327-24	2	Screw-HH
1:2	92-5583	1	Washer-Cap	10	3234-41	10	Screw-HHF
1:3	92-9726	1	Spring-Compression	11	104-8301	10	Nut-Flange, NI
1:4	92-8861	1	Cap-HOC				
2	69-1510	10	Spacer-Caster				
3	69-6860	4	Washer-Thrust				
4	108-5746	1	LH Castor Arm ASM				
4:2	69-6470	2	Bushing-Caster				
4:3	302-5	1	Fitting-Grease				
5	108-5747	1	RH Castor Arm ASM				
5:2	69-6470	2	Bushing-Caster				
5:3	302-5	1	Fitting-Grease				
6	104-0762-01	2	Caster Fork ASM				
7	3296-53	2	Nut-Lock, NI				
8	93-9938	2	8 Inch Wheel ASM				
8:1	93-9939	1	Tire				
8:2	68-8950	1	Tube-Inner (W/Valve)				
8:3	93-4241	1	Spacer-Bearing, Inner				
8:4	93-4237	2	Bearing				
8:6	32128-16	4	Nut-HHF				
8:7	93-4242	1	Plate				
8:8	93-4239	1	Rim-Wheel, Half				
8:9	93-5980	1	Hub				



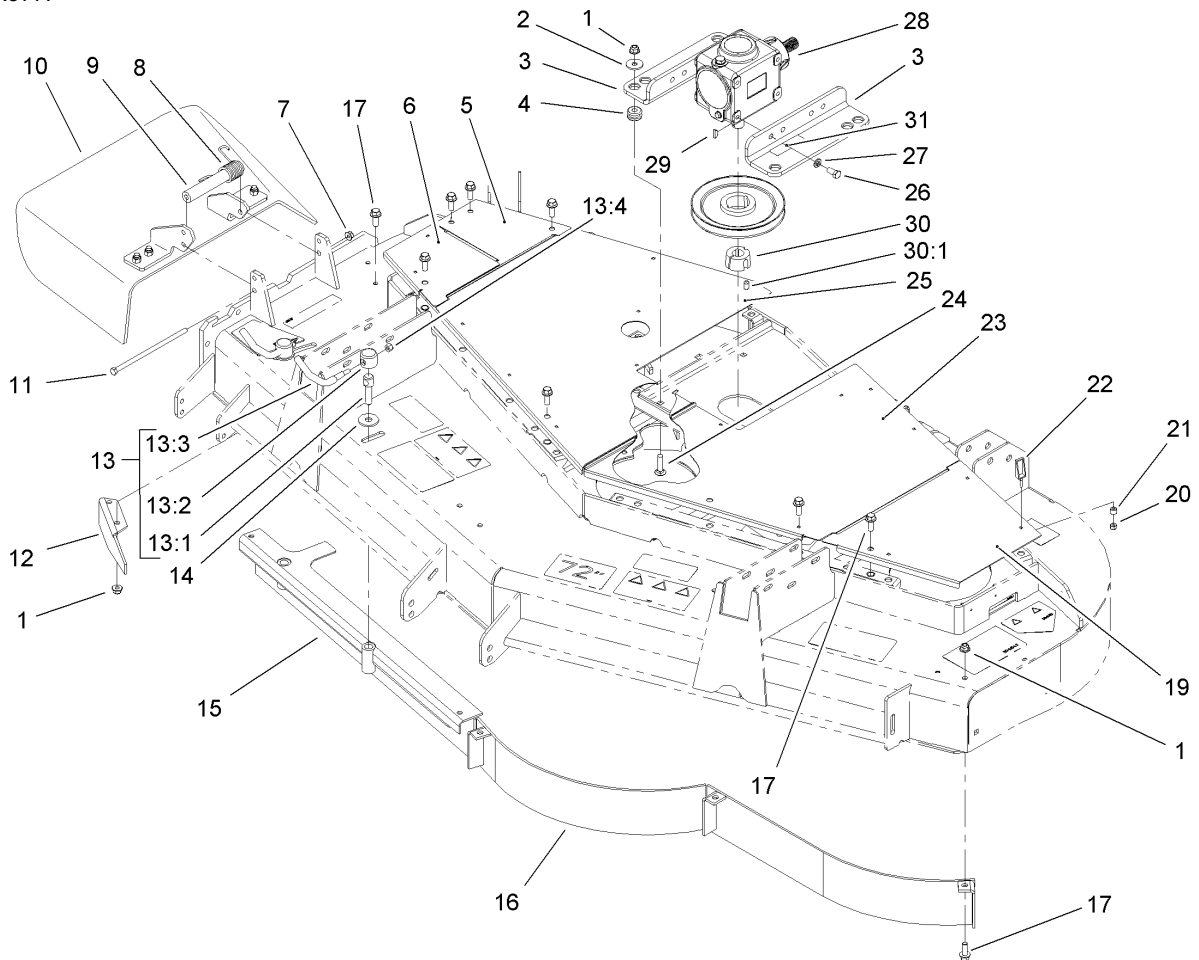
Spindle and Blade Assembly

Ref	Part No.	Qty.	Description				
1	108-1957	3	Spindle ASM				
2	110-0621	3	Blade				
3	72-9361	3	Cup-Scalp, Anti				
4	92-5816	3	Bolt-Blade				
5	3234-24	24	Screw-HHF				
6	104-8301	24	Nut-Flange, NI				



Spindle Assembly No. 108-1957

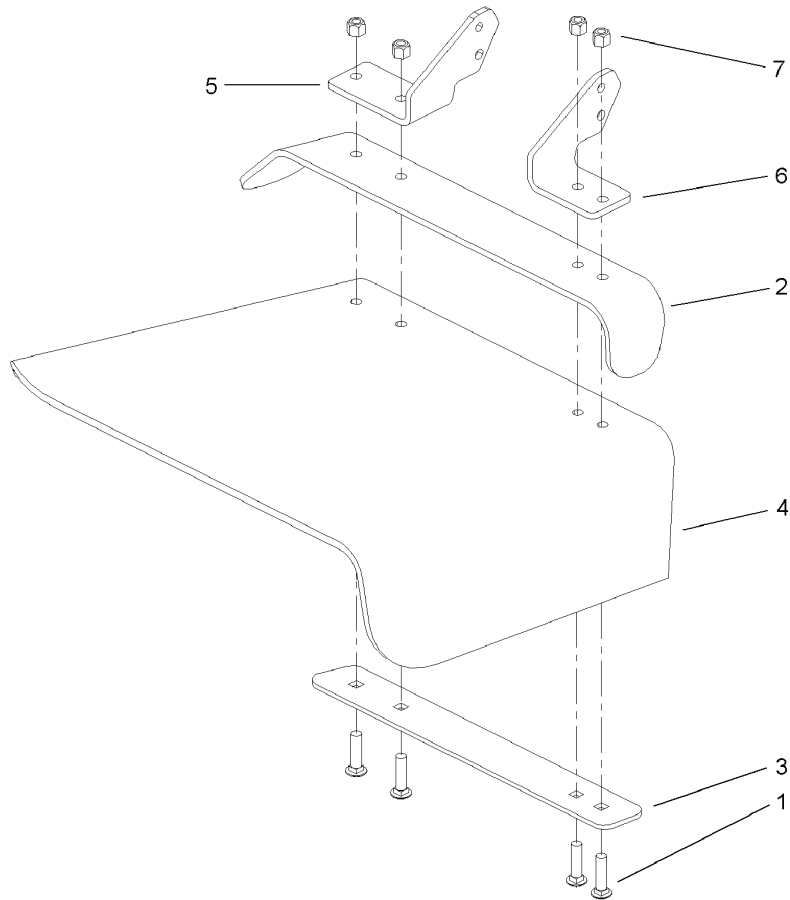
Ref	Part No.	Qty.	Description				
1	3296-60	1	Nut-Lock, NI				
2	104-8322	1	Washer-Hardened				
3	104-3546	1	Pulley-Driven, Low				
4	104-3564	1	Seal-V Ring				
5	106-7159	1	O-Ring				
6	108-1991	1	Spindle Housing ASM				
6:2	108-1954	1	Spacer Set-Bearing				
6:3	26-1830	1	Bearing ASM				
6:4	253-154	2	Seal-Oil				
6:5	302-60	1	Fitting-Grease, 90 DEG				
7	69-6950	1	Spacer-Shaft, Spindle				
8	108-1956	1	Shaft ASM				



Gearbox, Baffle and Cover Assembly

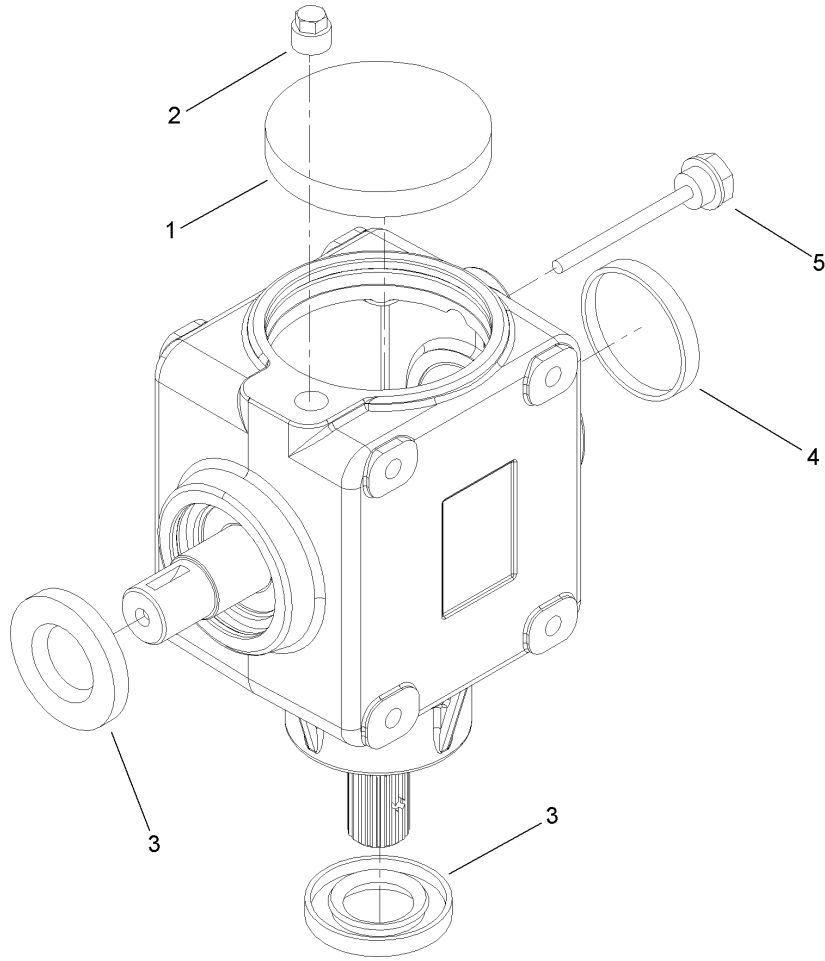
Ref	Part No.	Qty.	Description
1	104-8301	10	Nut-Flange, NI
2	63-8410	4	Washer
3	108-4376-03	2	Bracket-Gearbox
4	63-9750	4	Mount
5	110-0633-03	1	Cover-Deck, RH Outer Rear
6	110-0634-03	1	Cover-Deck, RH Outer Front
7	104-8300	1	Nut-Flange, NI
8	108-4052	1	Spring-Torsion
9	105-4622	1	Spacer
10	108-2792	1	Rubber Deflector ASM
11	322-50	1	Screw-HH
12	106-3216-01	1	Baffle-Discharge
13	106-3242	2	Lever ASM
13:1	106-3239	1	Screw-Lock
13:2	106-3240	1	Cap-Lock
13:3	106-3241	1	Lever-Lock
13:4	3296-29	1	Nut-Lock, NI
14	105-7697	2	Washer-Plastic
15	105-7669-01	1	Baffle ASM
16	105-7730-01	1	Baffle ASM
17	3234-42	13	Screw-HHF
19	110-0632-03	1	Cover-Deck, LH Outer
20	1-804254	18	Nut
21	106-6778	18	Bushing-Latch, Swell

Ref	Part No.	Qty.	Description
22	106-6777	18	Handle-Latch, Swell
23	110-0630-03	1	Cover-Deck, LH Inner
24	3231-26	4	Screw-CARR
25	110-0631-03	1	Cover-Deck, RH Inner
26	323-4	4	Screw-HH
27	3253-21	4	Washer-Lock
28	106-4355	1	Gearbox ASM
29	3257-5	1	Key-Woodruff
30	23-1640	1	Bushing-Taperlock
30:1	3247-4	2	Screw-Set
31	93-6697	1	Decal-Lube



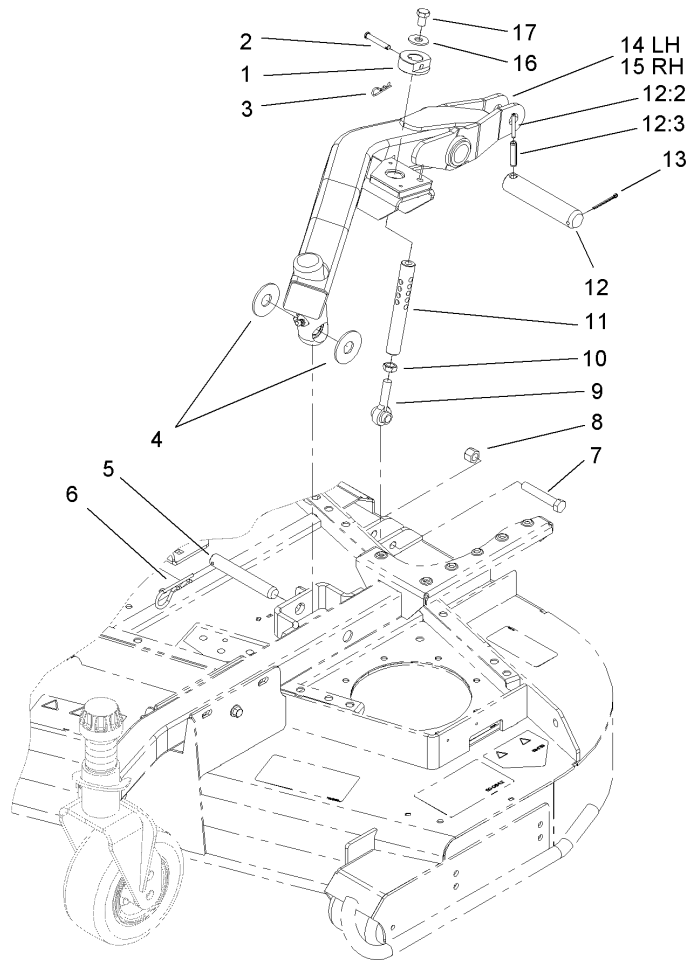
Rubber Deflector Assembly No. 108-2792

Ref	Part No.	Qty.	Description
1	3231-4	4	Screw-CARR
2	106-3246-01	1	Deflector
3	106-3248-03	1	Strap-Discharge
4	108-5029	1	Deflector-Rubber
5	108-4059-01	1	Plate-Hinge, Rear
6	106-3253-01	1	Plate-Hinge, Front
7	3296-39	4	Nut-Lock, NI



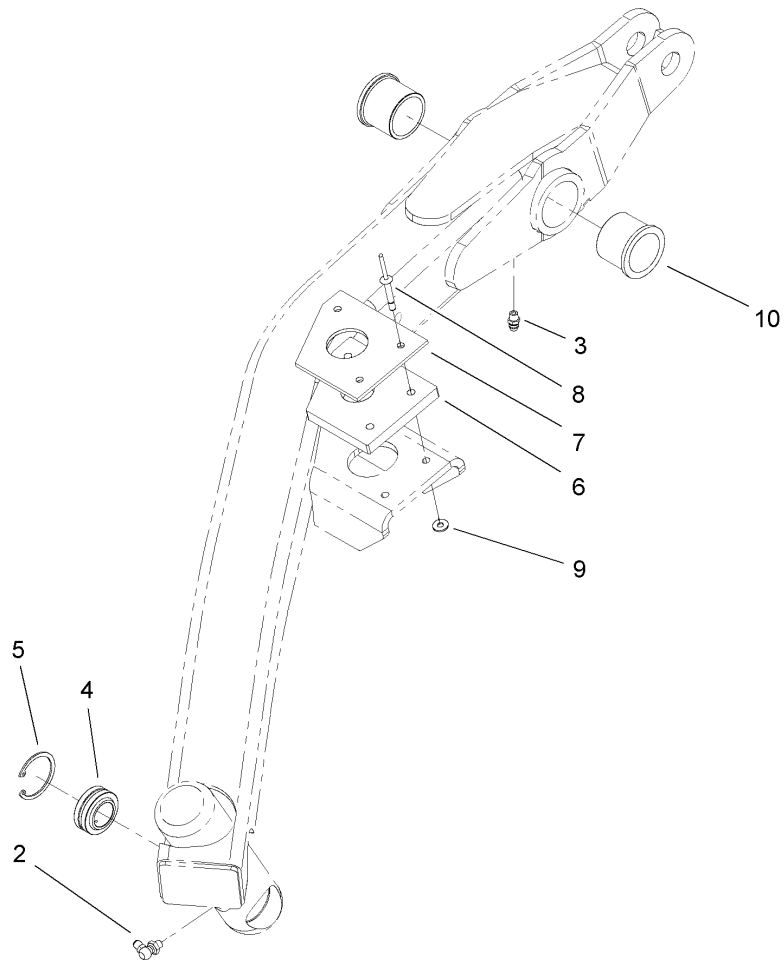
Gearbox Assembly No. 106-4355

Ref	Part No.	Qty.	Description	
1	107-2932	1	Cap-Oil	
2	107-2933	1	Plug	
3	107-2934	2	Seal-Oil	
4	107-2935	1	Cap-Oil	
5	107-2936	1	Plug-Filler, Dipstick	



Lift Arm Assembly

Ref	Part No.	Qty.	Description				
1	110-0641	2	Collar-HOC				
2	107-3457	2	Pin-Clevis				
3	3290-467	2	Pin-Hair				
4	107-7915	4	Washer-Thrust				
5	107-7904	2	Pin-Clevis				
6	3290-256	2	Pin-Hair				
7	325-12	2	Screw-HH				
8	3296-23	2	Nut-Lock, NI				
9	105-2808	2	End-Rod				
10	3220-5	2	Nut-Jam				
11	107-7284	2	Tube-HOC				
12	98-2330	2	Pivot Pin ASM				
12:2	32121-67	1	Pin-Roll				
12:3	32121-61	1	Pin-Roll				
13	3272-19	2	Pin-Cotter				
14	108-1977	1	LH Lift Arm ASM				
15	108-1947	1	RH Lift Arm ASM				
16	3256-6	2	Washer-Flat				
17	3213-20	2	Screw-HH				



LH Lift Arm Assembly No. 108-1977

Ref	Part No.	Qty.	Description
2	302-60	1	Fitting-Grease, 90 DEG
3	302-5	1	Fitting-Grease
4	105-7441	1	Bearing-Spherical
5	32151-34	1	Ring-Retaining
6	108-5298	1	Pad-Rubber, Rear HOC
7	110-0602	1	Pad-Plastic, Rear HOC
8	110-0606	3	Rivet-Blind
9	3269-26	3	Washer-Flat
10	256-268	2	Bushing

Attachments and Accessories

For 30368 - 72in Side Discharge Mower, Groundsmaster 3320 and 3280-D

Product Name	Model/Part
Atomic Blade	110-0624
8in Foam Filled Wheel ASM	93-5974

NOTES

