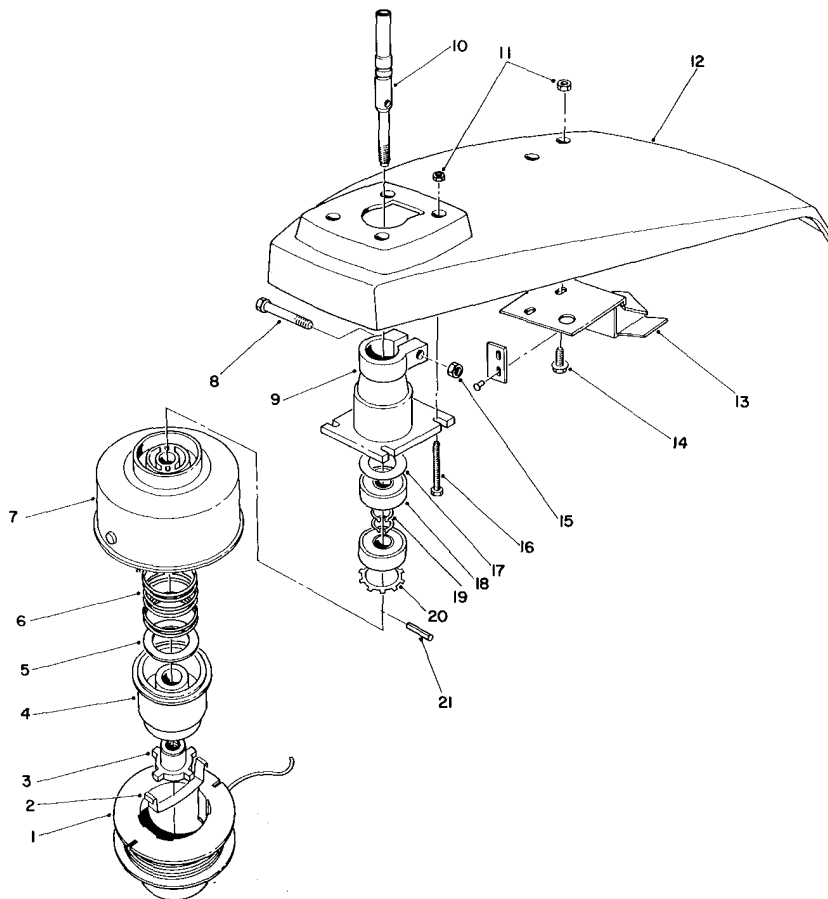




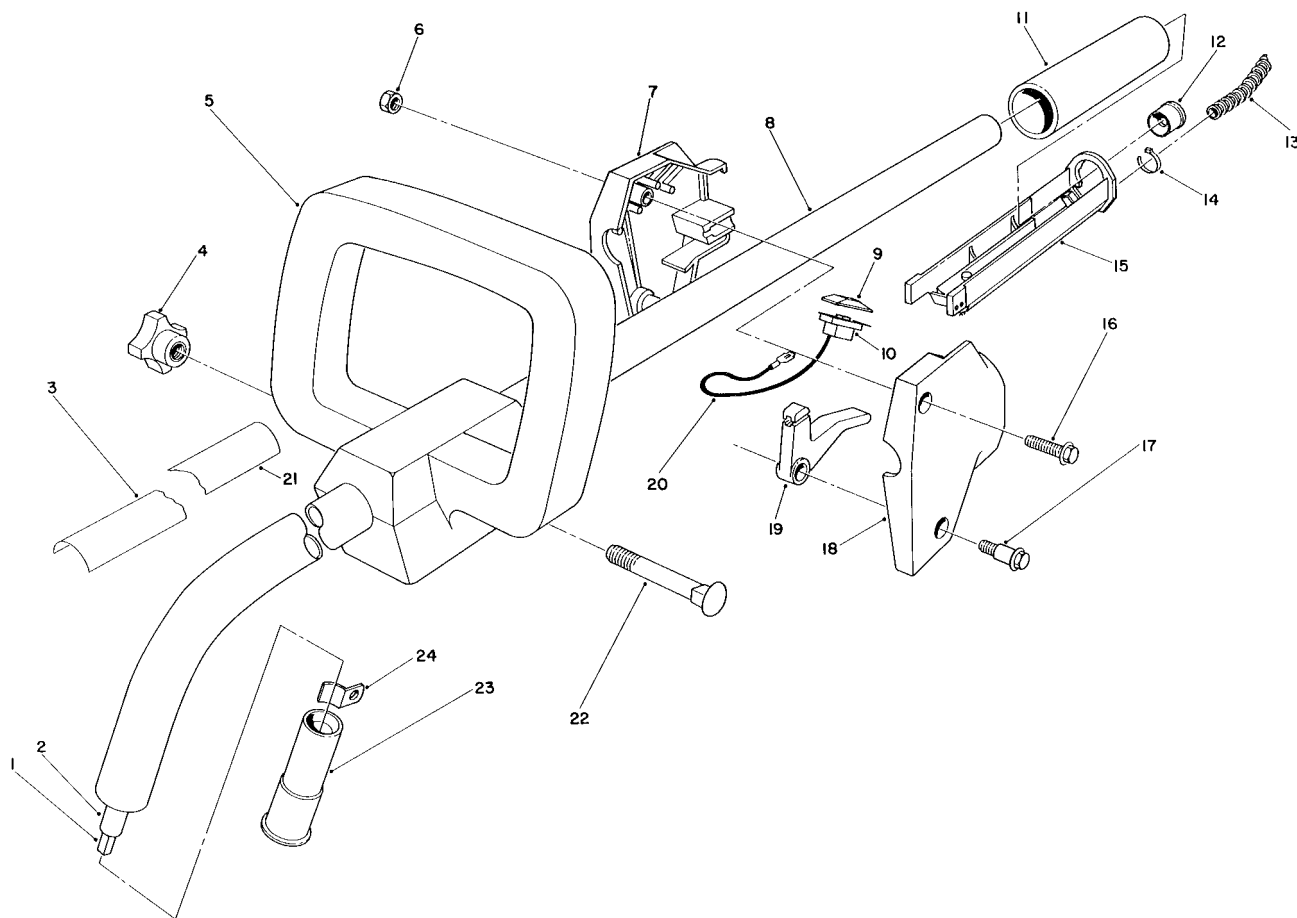
MODEL NO. 51641-7000001 & Up

**PARTS
CATALOG****TC 1000 GAS TRIMMER****TRIMMER HEAD ASSEMBLY**

Ref. No.	Part No.	Description	No. Used
1	43-4990	Spool & Line Assembly	1
2	33-8940	Saddle — Spool Cap	1
3	42-6050	Driver	1
4	33-6230	Spool Core	1
5	3256-42	Washer	1
6	29-7130	Spring — Compression	1
7	42-5950	Drum & Eyelet Assembly	1
8	321-9	Hex Hd. Capscrew	1
9	42-5931	Housing — Bearing Assembly (Incl. Ref. #10, 17-21)	1
10	42-5820	Shaft — Power	1
11	3296-2	Locknut	6
12	52-5730	Shield	1

Ref. No.	Part No.	Description	No. Used
13	42-5920	Bracket & Knife Blade	1
14	3290-321	Hex Washer Hd. Mach. Screw	2
15	3296-42	Locknut	1
16	3290-360	Hex Hd. Machine Screw	4
17	42-6030	Washer	1
18	49-2410	Ball Bearing	2
19	32151-65	Snap Ring	2
20	42-5770	Grip — Spring	1
21	32121-95	Coil Pin	1
*	43-5000	.080 Line (38 Ft.) (Optional)	1
*	46-2710	.080 Line (1 Lb. - 400 Ft.) (Optional)	1

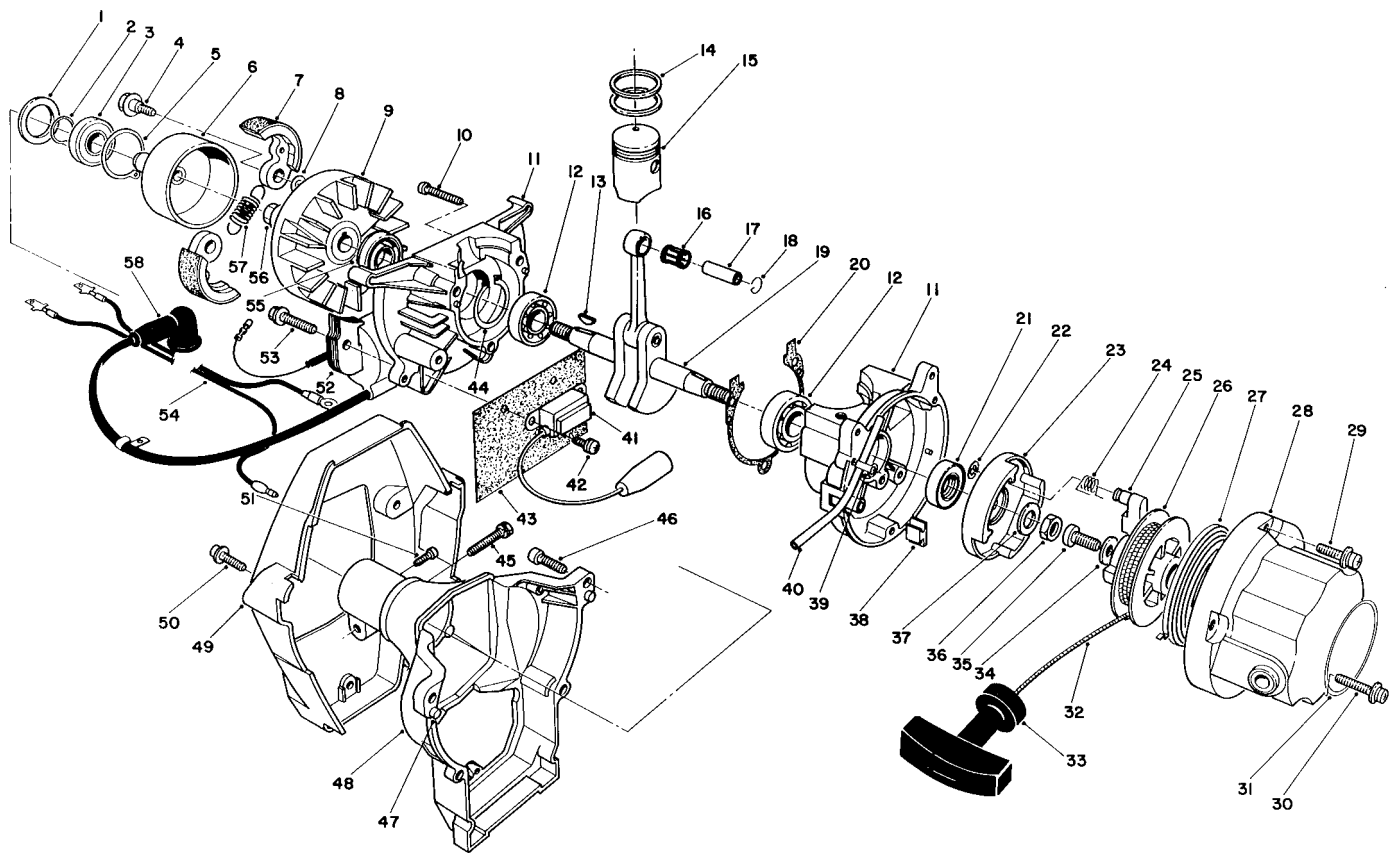
* Not Illustrated



HANDLE ASSEMBLY

Ref. No.	Part No.	Description	No. Used
1	46-9810	Flex Shaft — Drive	1
2	57-5510	Flex Shaft Casing Assembly	1
3	53-7150	Decal — Model No.	1
4	42-5890	Knob — Loop Handle	1
5	42-5551	Handle	1
6	3296-12	Locknut	2
7	57-5480	Housing — R.H.	1
8	53-7360	Tube — Curved	1
9	218-557	Cap — Switch	1
10	42-6000	Switch	1
11	53-7110	Grip	1
12	54-7630	Bushing — Pilot	1

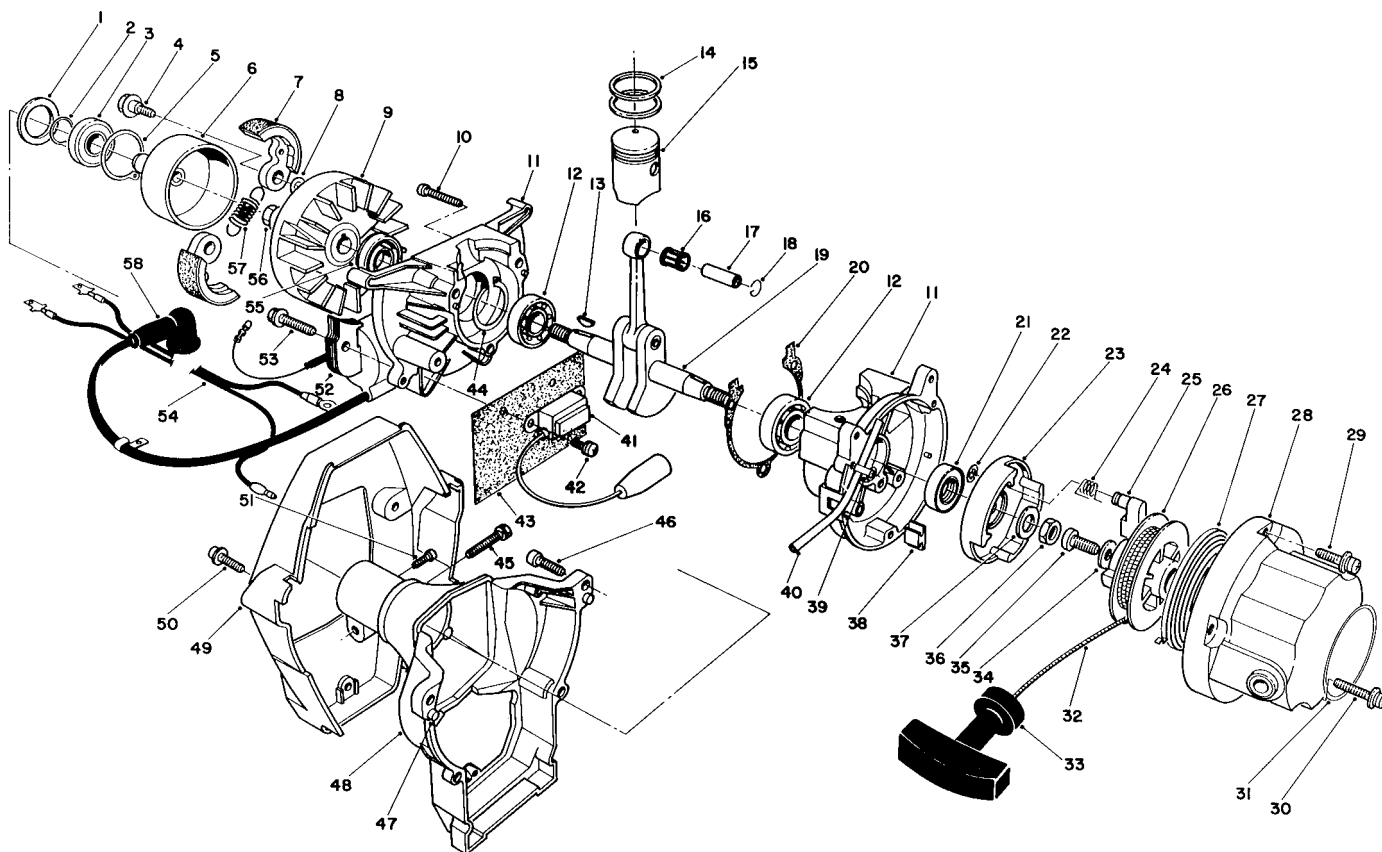
Ref. No.	Part No.	Description	No. Used
13	55-8410	Cover — Cable	1
14	2412-48	Clip	2
15	53-7280	Trough	1
16	32105-12	Hex Washer Hd. Screw	1
17	57-5420	Screw — Shoulder	1
18	57-5490	Housing — L.H.	1
19	53-7272	Lever — Throttle	1
20	53-7370	Wire Assembly	2
21	46-9480	Decal — Warning	1
22	3-7253	Bolt — Carriage	1
23	44-6640	Insert — Pole End	1
24	46-9890	Retainer — Tube	2



ENGINE ASSEMBLY

Ref. No.	Part No.	Description	No. Used
1	54-4460	Washer	1
2	54-4470	Snap Ring	1
3	54-4480	Bearing	1
4	54-5290	Bolt — Clutch	2
5	54-4490	Snap Ring	1
6	54-5280	Drum — Clutch	1
7	54-5260	Shoe — Clutch	2
8	54-5310	Washer	2
9	54-4750	Flywheel	1
10	54-4330	Screw	3
11	54-4500	Crankcase Assembly (Incl. Ref. #10)	1
12	54-4360	Bearing	2
13	54-4660	Woodruff Key	1
14	54-4630	Piston Ring	2
15	54-4650	Piston	1
16	54-4700	Needle Bearing	1
17	54-4690	Pin — Piston	1
18	54-4640	Clip	2
19	54-4680	Crankshaft	1
20	54-4370	Gasket — Crankcase	1
21	54-4380	Oil Seal	1
22	54-5350	E-Ring	1

Ref. No.	Part No.	Description	No. Used
23	54-5360	Pulley — Starter	1
24	54-5370	Spring — Return	1
25	54-5380	Ratchet	1
26	54-5410	Reel	1
27	54-5420	Spring — Spiral	1
28	54-5430	Case — Starter	1
29	54-5330	Screw	2
30	54-4520	Screw	1
31	33-8340	Decal — Toro	1
32	54-5450	Rope — Starter	1
33	54-5440	Knob — Starter	1
34	54-5400	Washer	1
35	54-5390	Screw	1
36	54-4720	Nut	1
37	54-4710	Washer	1
38	54-4390	Plug	1
39	54-5340	Clamp	1
40	54-4880	Tube — Fuel	1
41	54-4770	Unit — Transistor	1
42	54-4610	Screw	2
43	54-4760	Plate	1
44	54-4350	Snap Ring	1
45	54-4440	Bolt	1

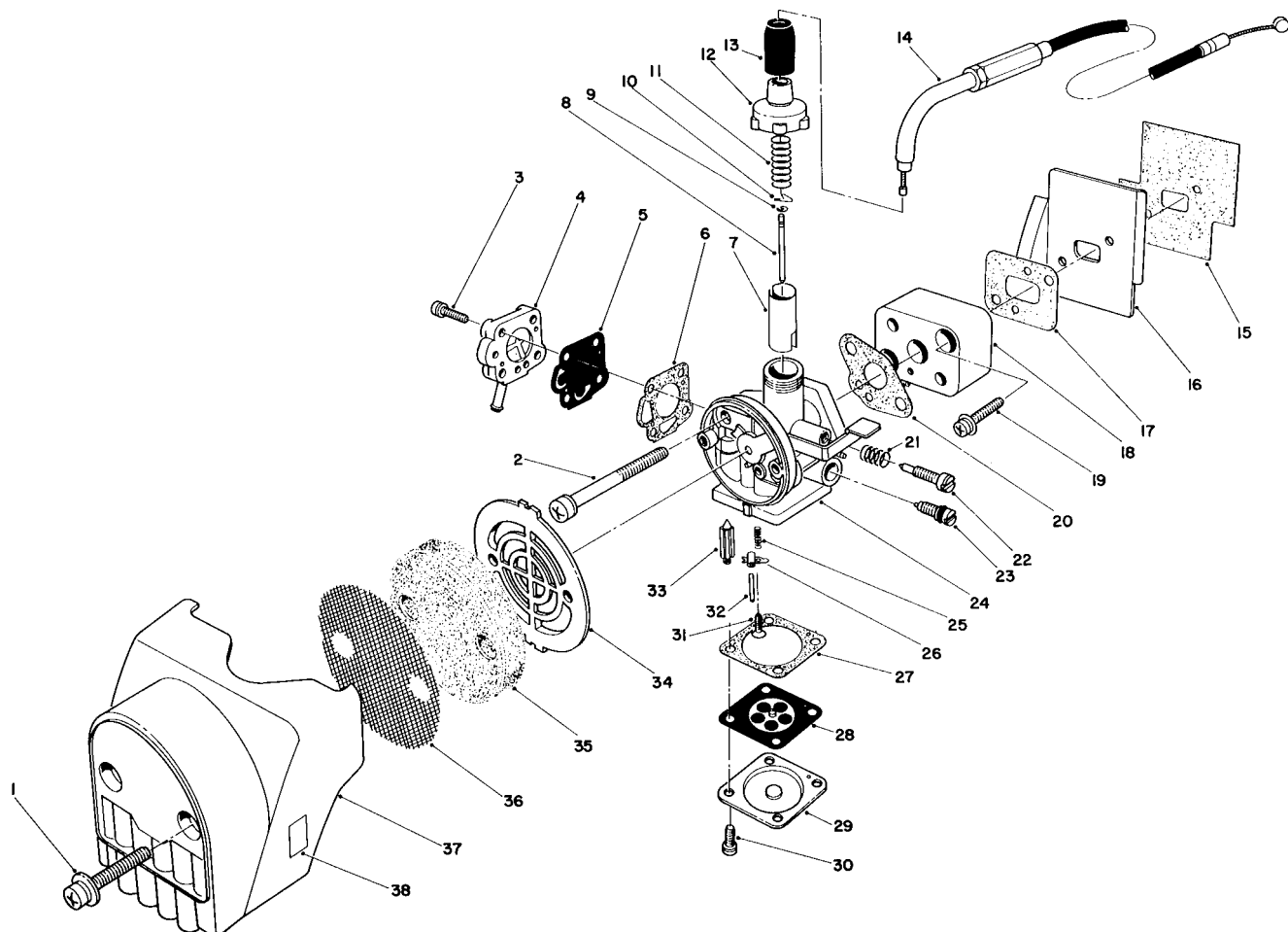


ENGINE ASSEMBLY (Continued)

Ref. No.	Part No.	Description	No. Used
46	54-4430	Screw	4
47	54-4510	Knock Pin	2
48	54-4450	Case — Clutch	1
49	54-4410	Cover — Fan	1
50	54-4400	Screw	3
51	54-4420	Screw	1
52	54-4780	Coil	1
53	54-4790	Bolt	2
54	54-4800	Wire — Lead	1

Ref. No.	Part No.	Description	No. Used
55	54-4340	Oil Seal	1
56	54-4670	Nut	1
57	54-5270	Spring	1
58	54-4730	Cap — Plug	1
*	54-5300	Clutch Assembly (Incl. Ref. #7 & 57)	1
*	54-5320	Recoil Starter Assembly (Incl. Ref. #22-28 & 32-35)	1
*	52-5740	Engine Complete	1

* Not Illustrated

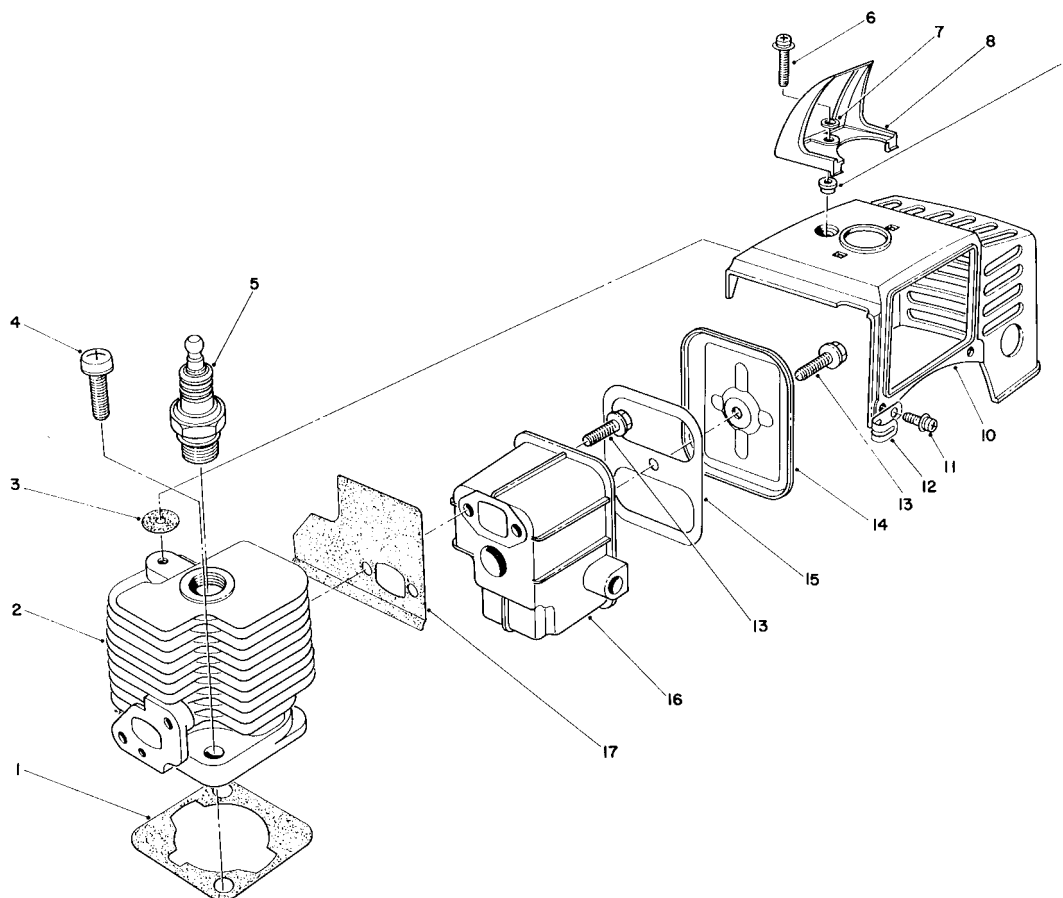


AIR CLEANER & CARBURETOR ASSEMBLY

Ref. No.	Part No.	Description	No. Used
1	54-5150	Screw	2
2	54-4870	Screw	2
3	54-5040	Screw	4
4	54-5030	Pump Cover Assembly	1
5	54-5020	Diaphragm — Pump	1
6	54-5010	Gasket — Pump Cover	1
7	54-4950	Valve — Throttle	1
8	54-4940	Jet Needle Assembly	1
9	54-4930	Retainer — Spring	1
10	54-5120	Clip — Needle	1
11	54-4920	Spring — Throttle	1
12	54-4910	Cap — Mixing Chamber	1
13	54-4900	Cap — Rubber	1
14	54-5130	Wire — Throttle	1
15	54-4810	Gasket	1
16	54-4820	Plate	1
17	54-4830	Gasket — Insulator	1
18	54-4840	Insulator	1
19	54-4860	Screw	2
20	54-4850	Gasket — Carburetor	1
21	54-4960	Spring — Adjusting Screw	1

Ref. No.	Part No.	Description	No. Used
22	54-4970	Screw — Adjusting	1
23	54-4980	Main Jet Needle Assembly	1
24	54-4890	Carburetor Assembly (Incl. Ref. #3-13, 21-23, & 25-33)	1
25	54-4990	Spring — Inlet Valve	1
26	54-5060	Arm — Float	1
27	54-5000	Gasket — Main Diaphragm	1
28	54-5090	Main Diaphragm Assembly	1
29	54-5100	Cover — Main Diaphragm	1
30	54-5110	Screw	4
31	54-5080	Screw — Float Pin Set	1
32	54-5070	Pin — Float	1
33	54-5050	Valve — Float	1
34	54-5200	Grid	1
35	54-5190	Element	1
36	54-5180	Screen	1
37	54-5160	Cover — Cleaner	1
38	54-5170	Label — Choke	1
*	54-5140	Air Cleaner Assembly (Incl. Ref. #34-38)	1

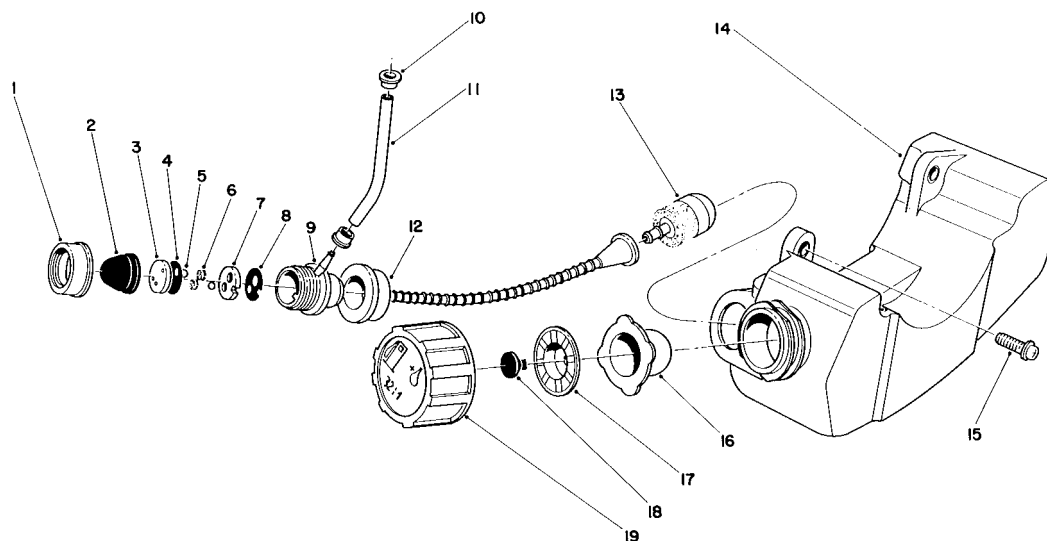
* Not Illustrated



CYLINDER & MUFFLER ASSEMBLY

Ref. No.	Part No.	Description	No. Used
1	54-4590	Gasket — Cylinder	1
2	54-4580	Cylinder	1
3	54-4560	Gasket	1
4	54-4620	Bolt	2
5	45-0320	Spark Plug	1
6	54-4520	Screw	1
7	54-4540	Washer	1
8	54-4530	Cover — Spark Plug	1
9	54-4550	Bushing	1

Ref. No.	Part No.	Description	No. Used
10	54-4600	Cover — Top	1
11	54-4400	Screw	2
12	54-4570	Clamp	1
13	54-5210	Bolt	3
14	54-5220	Lid — Muffler	1
15	54-5230	Gasket — Muffler Seal	1
16	54-5240	Muffler	1
17	54-5250	Gasket — Muffler	1

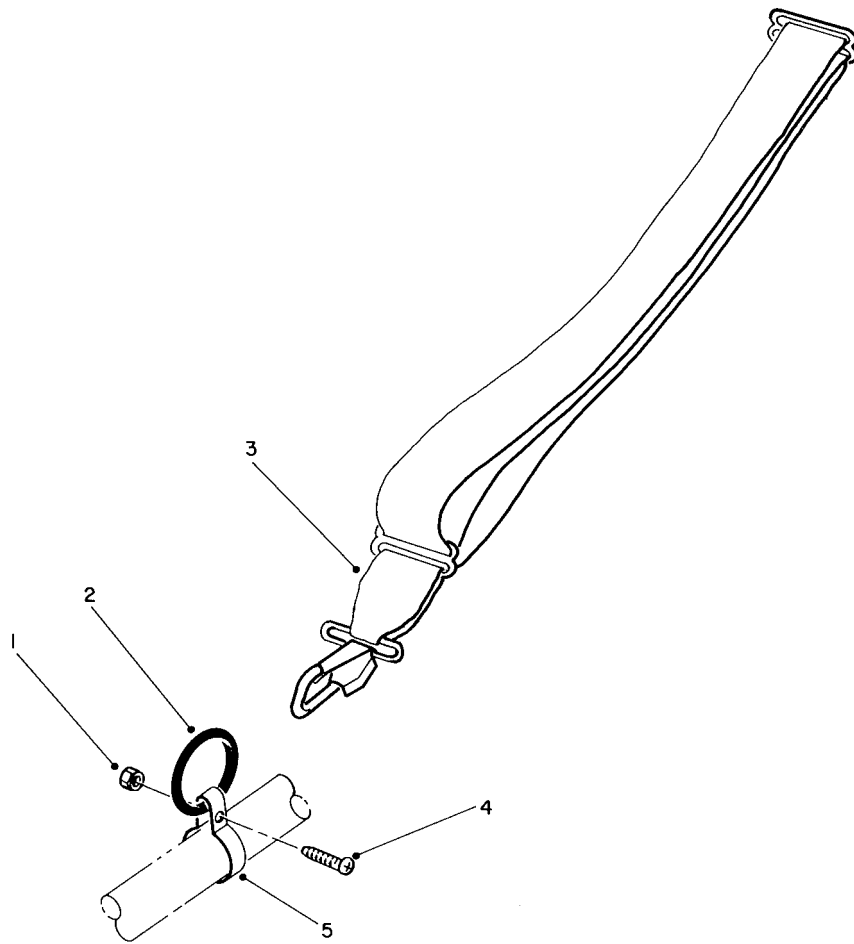


FUEL TANK ASSEMBLY

Ref. No.	Part No.	Description	No. Used
1	54-5510	Cap — Pump	1
2	54-5520	Cap	1
3	54-5530	Seat — Valve	1
4	54-5460	Gasket	1
5	54-5480	Ball	2
6	54-5470	Sponge	2
7	54-5490	Seat - Valve	1
8	54-5500	Gasket	1
9	54-5570	Pump — Primer (Incl. Ref. #1-8)	1
10	54-5550	Clip	2
11	54-5560	Tube — Fuel	1

Ref. No.	Part No.	Description	No. Used
12	54-5580	Hose — Suction	1
13	54-5540	Filter — Fuel	1
14	54-5640	Fuel Tank Assembly (Incl. Ref. #1-9, 12, 13, 16-19)	1
15	54-5650	Screw	2
16	54-5630	Gasket	1
17	54-5620	Holder	1
18	54-5610	Valve — Breather	1
19	54-5600	Cap — Gas	1
*	54-5590	Tank Cap Assembly (Incl. Ref. #16-19)	1

* Not Illustrated

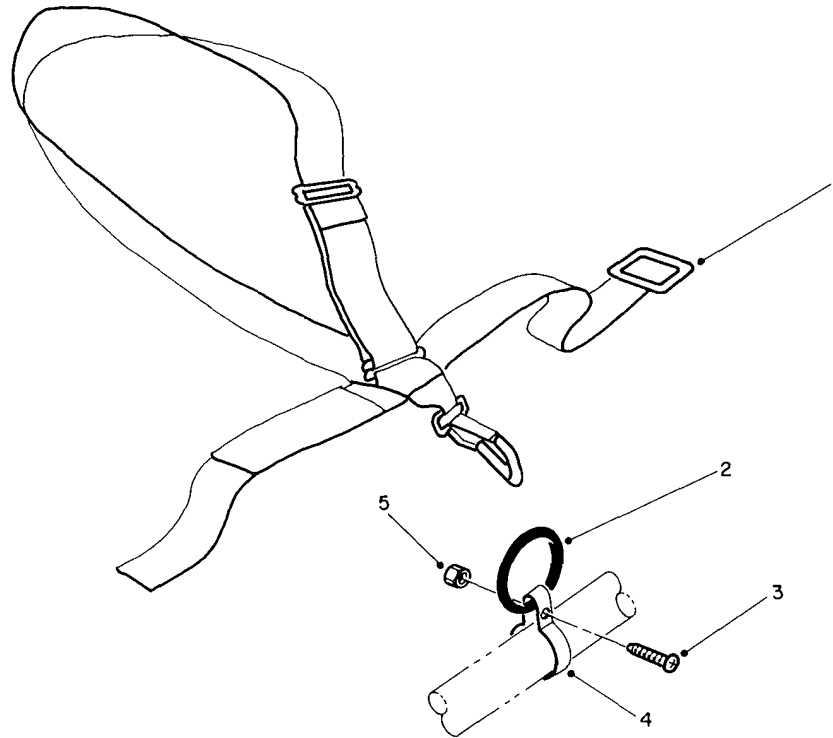


SHOULDER HARNESS (Optional)

Ref. No.	Part No.	Description	No. Used
1	3296-12	Nut	1
2		Ring	1
3	46-2951	Standard Harness	1
4	3251-4	Screw	1

Ref. No.	Part No.	Description	No. Used
5		Clamp	1
*	46-2691	Clamp & Ring Kit (Incl. Ref. #1-2 & 4-5)	1

* Not Illustrated

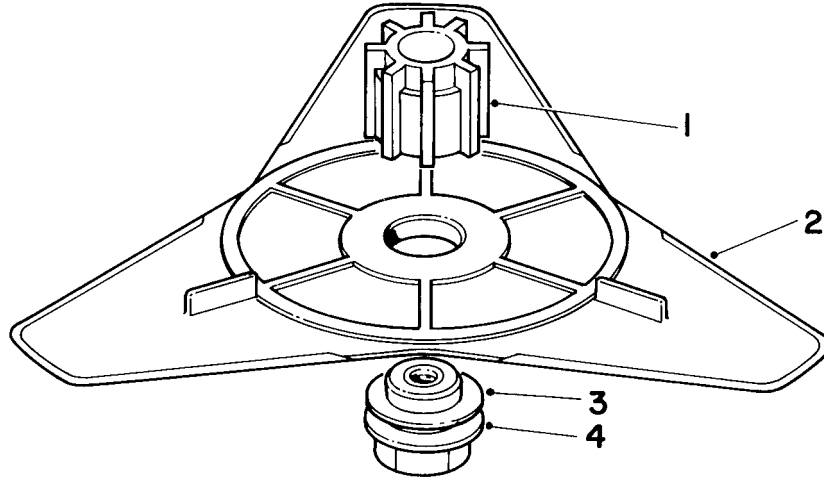


DELUXE SHOULDER/BELT HARNESS (Optional)

Ref. No.	Part No.	Description	No. Used
1	46-2961	Deluxe Harness	1
2		Ring	1
3	3251-4	Screw	1
4		Clamp	1

Ref. No.	Part No.	Description	No. Used
5	3296-12	Nut	1
*	46-2691	Clamp & Ring Kit (Incl. Ref. #2-5)	1

* Not Illustrated

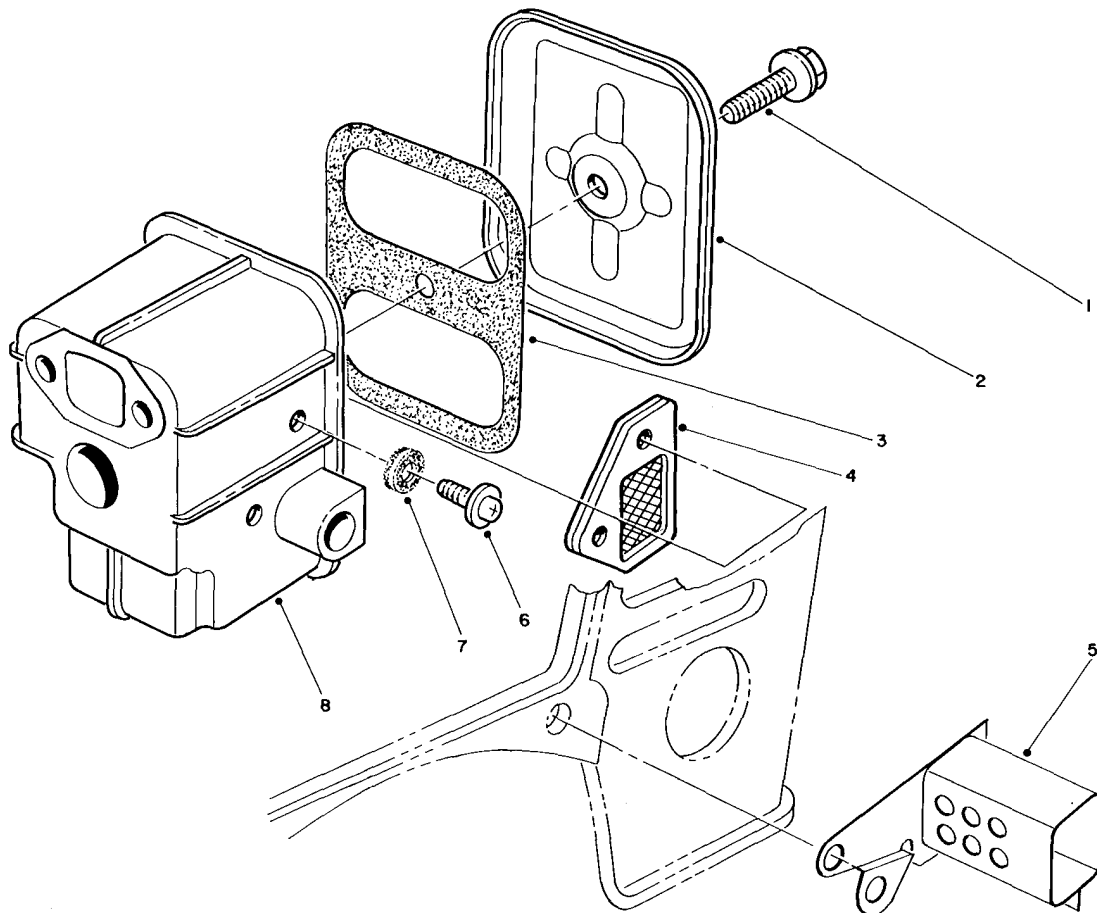


FLEX BLADE KIT 44-9870 (Optional)

Ref. No.	Part No.	Description	No. Used
1	44-2410	Adapter — Blade	1
2	46-2790	Blade — Flex	1
3	51-1340	Washer	1

Ref. No.	Part No.	Description	No. Used
4	44-2420	Nut — Adapter	1
*	46-2951	Shoulder Harness	1
*	46-2691	Clamp & Ring Kit	1

* Not Illustrated



SPARK ARRESTOR MUFFLER KIT 55-7390 (Optional)

Ref. No.	Part No.	Description	No. Used
1	54-5210	Screw & Washer	1
2	54-5220	Lid — Muffler	1
3	54-5230	Gasket	1
4	61-9210	Spark Arrestor	1

Ref. No.	Part No.	Description	No. Used
5	61-9260	Cover — Muffler	1
6	61-9220	Screw & Washer	2
7	61-9180	Gasket	2
8	61-9200	Body — Muffler	1

PRODUCT CHANGES

In an effort to make improvements available to TORO owners as quickly as possible, minor changes are incorporated into Toro's products from time to time that do not become immediately shown in the Parts Catalog. If such a change apparently has been made in your unit, which is not reflected in your manual, see your TORO Distributor or his Authorized TORO Service Dealer for information and part numbers.

IDENTIFICATION AND ORDERING

MODEL AND SERIAL NUMBERS

The Trimmer has two identification numbers: a model number and a serial number. The two numbers are stamped on a decal which is located in front of throttle lever on bottom side of drive shaft tube. In any correspondence concerning the trimmer, supply model and serial numbers to assure that correct information and replacement parts are obtained.

To order replacement parts from an Authorized TORO Service Dealer, supply the following information:

1. Model and serial numbers of the trimmer.
2. Part number, description, and quantity of part(s) desired.

Note: Do not order by reference number if a parts catalog is being used; use the PART NUMBER.

The Toro Promise

TORO GAS TRIMMER/WEEDER A TWO YEAR LIMITED WARRANTY

The Toro Company promises to repair your TORO Product if defective in materials or workmanship. The following time periods from the date of purchase apply:

Residential Product 2 Years
Residential Products Used Commercially 45 Days

The costs of parts and labor are included, but the customer pays the transportation costs. Just return any residential product to an Authorized TORO Service Dealer or TORO Distributor.

Should you feel your TORO Product is defective and wish to rely on The Toro Promise, the following procedure is recommended:

1. Contact any Authorized TORO Service Dealer, TORO Master Service Dealer, or TORO Distributor (the Yellow Pages of your telephone directory is a good reference source).
2. He will either instruct you to return the product to him or recommend another Authorized TORO Service outlet which might be more convenient.
3. Bring the product along with your original sales slip, or other evidence of purchase date, to the service dealer.
4. The servicing dealer will inspect the unit, advise you whether the product is defective and, if so, make all repairs necessary to correct the defect without extra charge to you.

If for any reason you are dissatisfied with the dealer's analysis of the defect or the service performed, you may contact us.

Write:

TORO Consumer Service Department
8111 Lyndale Avenue South
Minneapolis, Minnesota 55420

The above remedy of product defects through repair by an Authorized TORO Service Dealer is the purchaser's sole remedy for any defect.

THERE IS NO OTHER EXPRESS WARRANTY. ALL IMPLIED WARRANTIES OF MERCHANTABILITY AND

FITNESS FOR USE ARE LIMITED TO THE DURATION OF THE EXPRESS WARRANTY.

Some states do not allow limitations on how long an implied warranty lasts, so the above limitation may not apply to you.

This warranty applies only to parts or components which are defective and does not cover repairs necessary due to normal wear, misuse, accidents, or lack of proper maintenance. Regular, routine maintenance of the unit to keep it in proper operating condition is the responsibility of the owner.

All warranty repairs reimbursable under The Toro Promise must be performed by an Authorized TORO Service Dealer using Toro approved replacement parts.

Repairs or attempted repairs by anyone other than an Authorized TORO Service Account are not reimbursable under The Toro Promise. In addition, these unauthorized repair attempts may result in additional malfunctions, the correction of which is not covered by warranty.

THE TORO COMPANY IS NOT LIABLE FOR INDIRECT, INCIDENTAL OR CONSEQUENTIAL DAMAGES IN CONNECTION WITH THE USE OF THE PRODUCT INCLUDING ANY COST OR EXPENSE OF PROVIDING SUBSTITUTE EQUIPMENT OR SERVICE DURING PERIODS OF MALFUNCTION OR NON-USE.

Some states do not allow the exclusion or limitation of incidental or consequential damages, so the above limitation or exclusion may not apply to you.

This warranty gives you specific legal rights, and you may also have other rights which vary from state to state.

COUNTRIES OTHER THAN THE UNITED STATES OR CANADA

Customers who have purchased TORO products exported from the United States or Canada should contact their TORO Distributor (Dealer) to obtain guarantee policies for your country, province or state. If for any reason

you are dissatisfied with your Distributor's service or have difficulty obtaining guarantee information, contact the TORO importer. If all other remedies fail, you may contact us at The Toro Company.