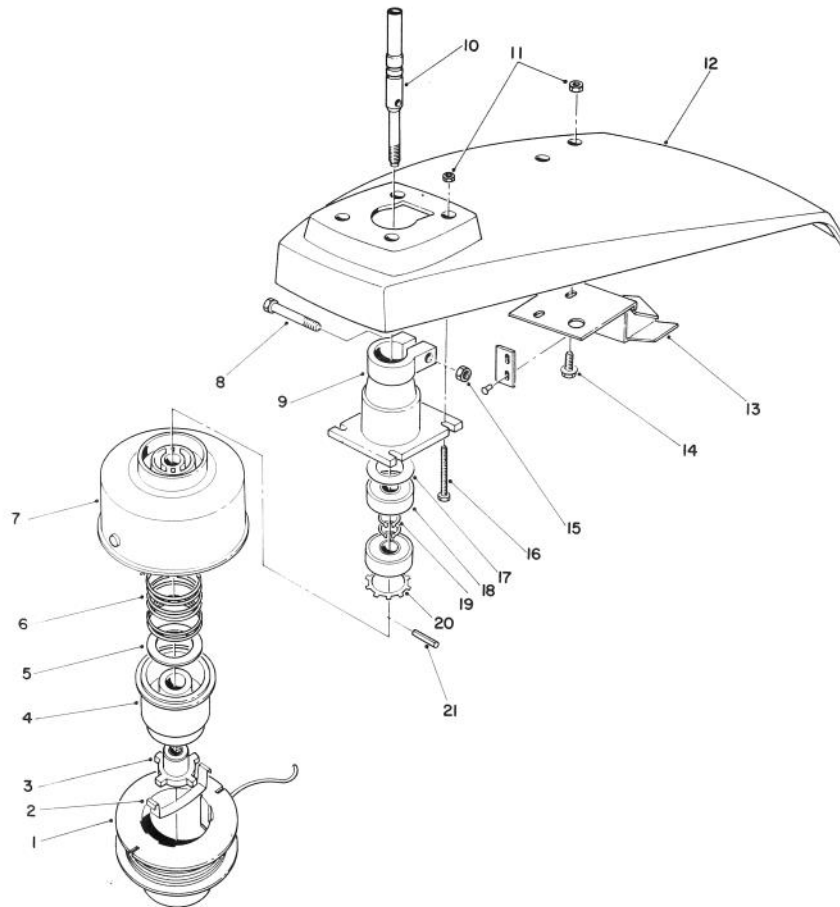
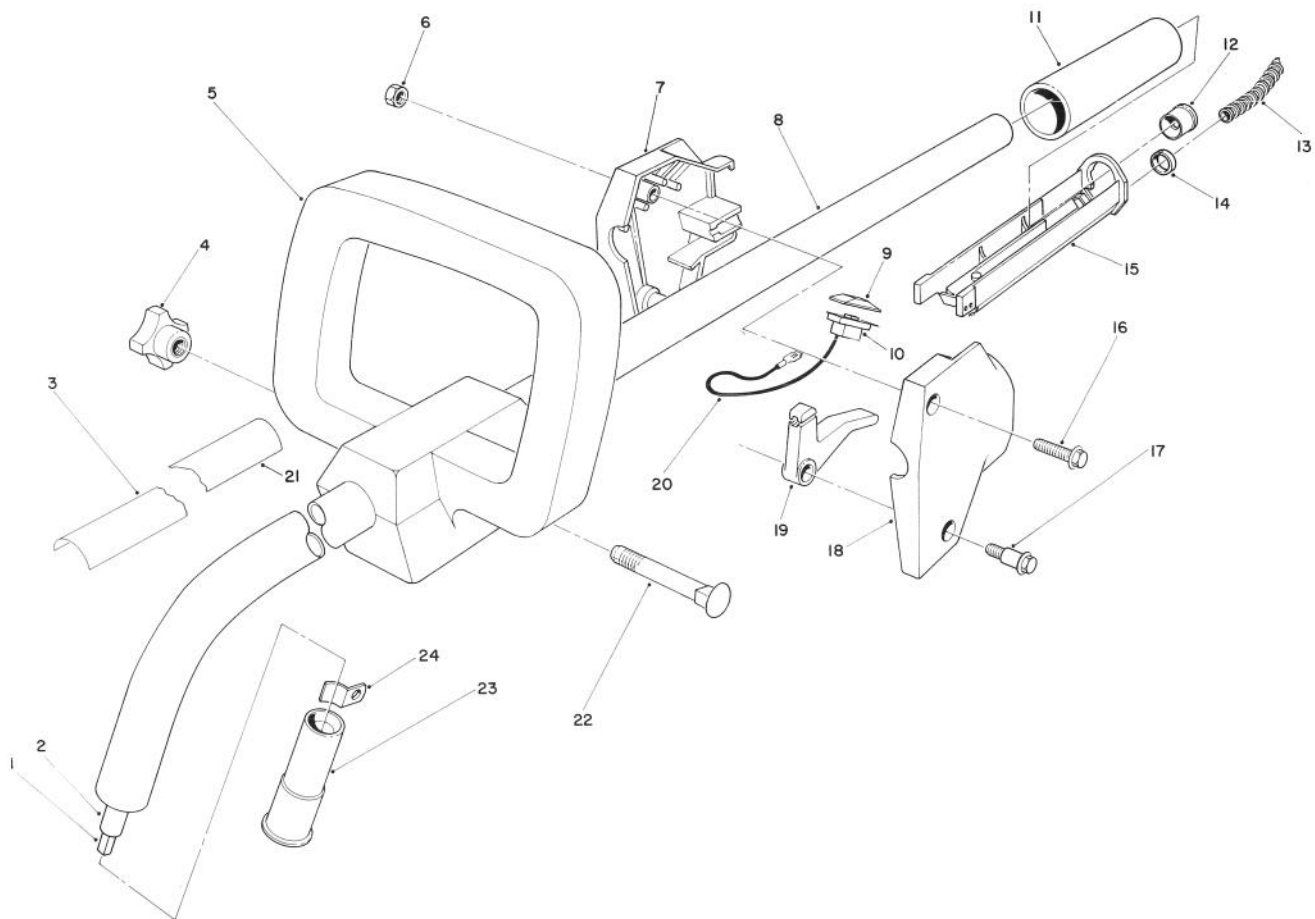


**TORO®****MODEL NO. 51642-7000001 & UP****PARTS  
CATALOG****TC 2000 GAS TRIMMER****TRIMMER HEAD ASSEMBLY**

Ref. No.	Part No.	Description	No. Used
1	43-4990	Spool & Line Assembly	1
2	33-8940	Saddle — Spool Cap	1
3	42-6050	Driver	1
4	33-6230	Spool Core	1
5	3256-42	Washer	1
6	29-7130	Spring — Compression	1
7	42-5950	Drum & Eyelet Assembly	1
8	321-9	Hex Hd. Capscrew	1
9	42-5931	Housing — Bearing Assembly (Incl. Ref. #10, 17-21)	1
10		Shaft — Power	1
11	3296-2	Locknut	6
12	52-5730	Shield	1

Ref. No.	Part No.	Description	No. Used
13	42-5920	Bracket & Knife Blade	1
14	3290-321	Hex Washer Hd. Mach. Screw	2
15	3296-42	Locknut	1
16	3290-360	Hex Hd. Machine Screw	4
17	42-6030	Washer	1
18	49-2410	Ball Bearing	2
19	32151-65	Snap Ring	2
20		Grip — Spring	1
21	32121-95	Coil Pin	1
*	43-5000	.080 Line (38 Ft.) (Optional)	1
*	46-2710	.080 Line (1 Lb. - 400 Ft.) (Optional)	1

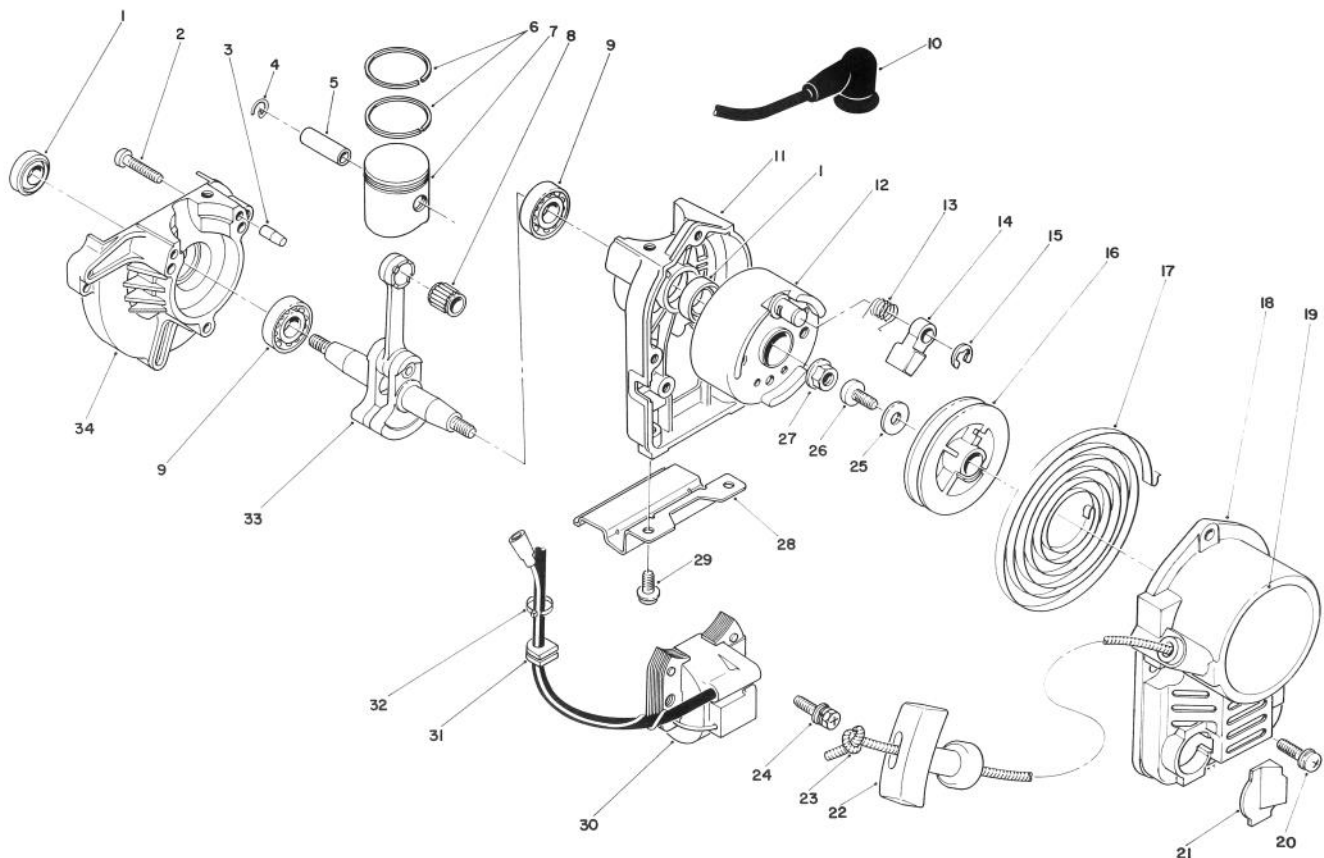
\*Not Illustrated



## HANDLE ASSEMBLY

Ref. No.	Part No.	Description	No. Used
1	46-9810	Flex Shaft — Drive	1
2	57-5510	Flex Shaft Liner	1
3	57-5560	Decal — Model No.	1
4	42-5890	Knob — Loop Handle	1
5	42-5551	Handle	1
6	3296-12	Locknut	2
7	57-5480	Housing — R.H.	1
8	53-7360	Tube — Curved	1
9	218-557	Cap — Switch	1
10	42-6000	Switch	1
11	53-7110	Grip	1
12	54-7630	Bushing — Pilot	1

Ref. No.	Part No.	Description	No. Used
13	55-8410	Cover — Cable	1
14	2412-48	Clip	2
15	53-7280	Trough	1
16	32105-12	Hex Washer Hd. Screw	1
17	57-5420	Screw — Shoulder	1
18	57-5490	Housing — L.H.	1
19	53-7272	Lever — Throttle	1
20	53-7370	Wire Assembly	2
21	46-9480	Decal — Warning	1
22	3-7253	Bolt — Carriage	1
23	44-6640	Insert — Pole End	1
24	46-9890	Retainer — Tube	2

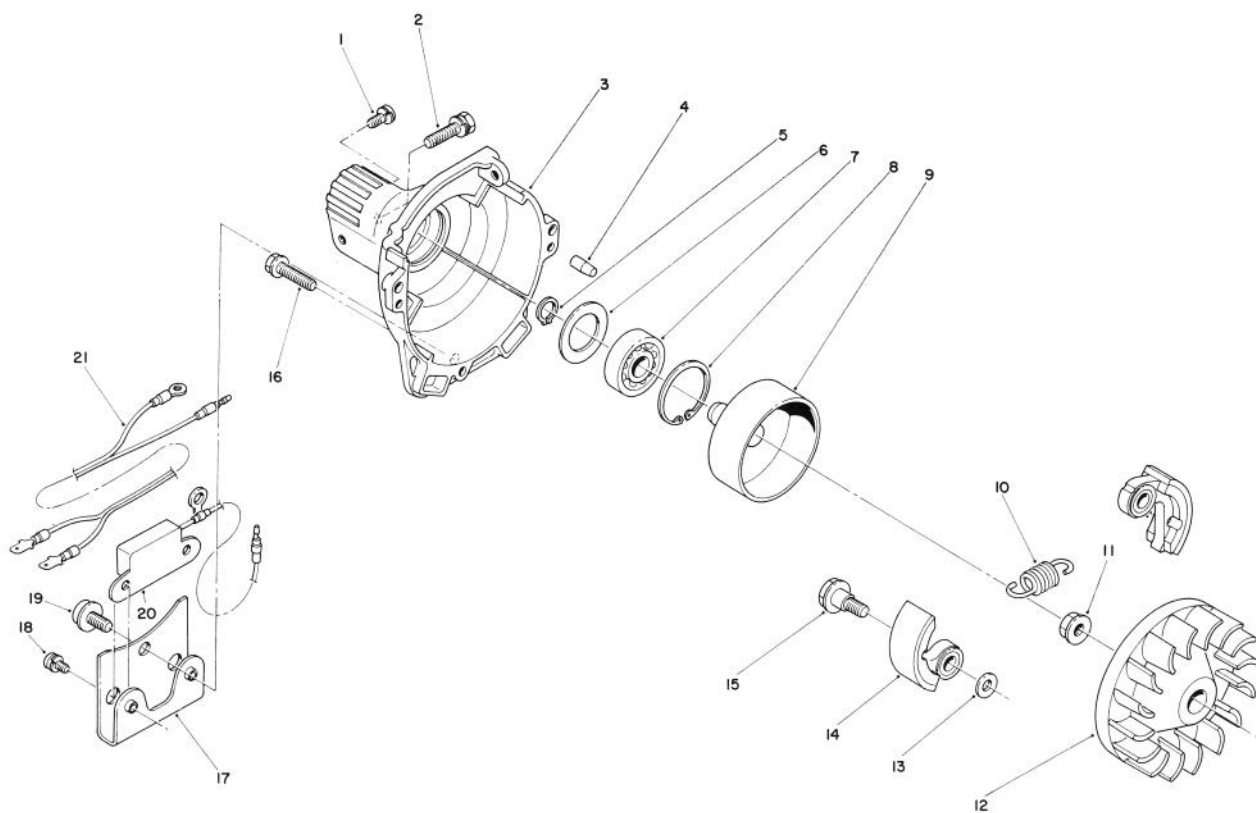


## RECOIL & CRANKCASE ASSEMBLY

Ref. No.	Part No.	Description	No. Used
1	54-4380	Seal Oil	2
2	54-4330	Screw	3
3	60-7590	Pin — Dowel	2
4	54-5920	Clip — Piston Pin	2
5	60-7760	Pin — Piston	1
6	60-7740	Ring	2
7	60-7750	Piston	1
8	54-5930	Bearing — Needle	1
9	54-4360	Bearing — Ball	2
10	54-4730	Cap — Plug	1
11	60-7600	Case — Starter	1
12	60-7800	Rotor	1
13	60-7810	Spring — Return	1
14	60-7820	Ratchet	1
15	60-7830	Snap Ring	1
16	60-8230	Reel	1
17	54-5420	Spring — Spiral	1
18	60-8240	Case — Starter	1
19	57-5570	Decal — Recoil Cover	1

Ref. No.	Part No.	Description	No. Used
20	60-7930	Screw & Washer	3
21	60-8250	Grommet	1
22	54-5440	Knob — Starter	1
23	54-6370	Rope — Starter	1
24	60-7870	Bolt & Washer	2
25	54-5400	Washer	1
26	60-8220	Screw	1
27	60-7770	Flange Nut	1
28	60-7660	Stand	1
29	60-7620	Screw & Washer	2
30	60-7860	Coil — Ignition	1
31	60-7840	Grommet	1
32	54-5990	Band	1
33	60-7790	Crankshaft Assembly	1
34	60-7650	Case — Drive	1
*	60-8200	Recoil Starter Assembly (Incl. Ref. #15-17, 19-21, 23 & 24)	1
*	57-5410	Engine (Complete)	1

\*Not Illustrated

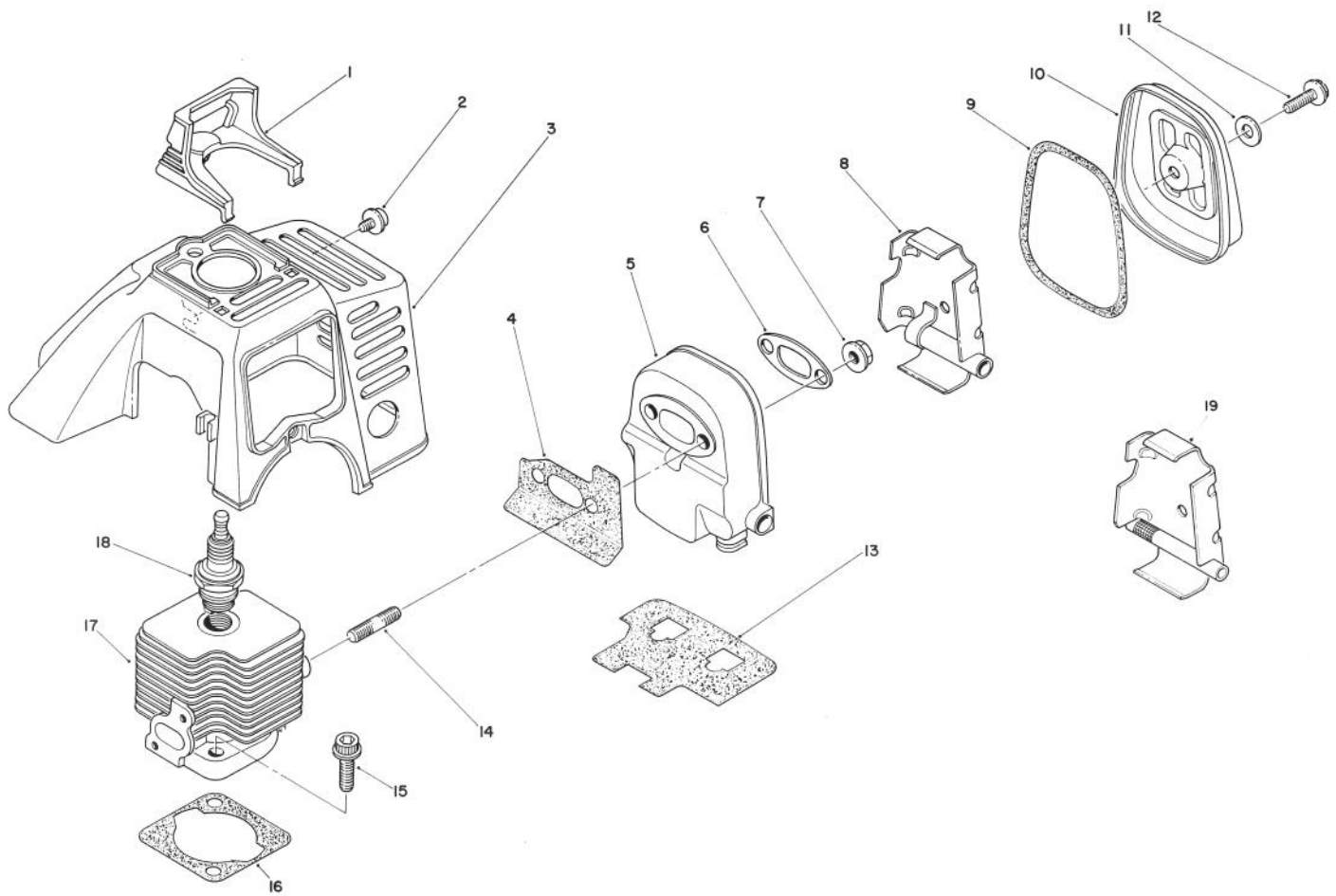


## CLUTCH CASE & FAN ASSEMBLY

Ref. No.	Part No.	Description	No. Used
1	54-4420	Screw & Washer	1
2	54-4440	Bolt & Washer	1
3	60-7580	Case — Clutch	1
4	60-7590	Pin — Dowel	2
5	54-4470	Snap Ring	1
6	54-4460	Washer	1
7	54-4480	Bearing — Ball	1
8	54-4490	Snap Ring	1
9	60-7640	Drum — Clutch	1
10	54-6230	Spring	1
11	60-7770	Flange Nut	1
12	60-7780	Fan	1

Ref. No.	Part No.	Description	No. Used
13	56-6070	Washer	2
14	54-6220	Flyweight	2
15	56-6060	Bolt — Clutch	2
16	60-7610	Bolt & Washer	3
17	60-7630	Bracket — Unit	1
18	54-4610	Screw & Washer	2
19	60-7620	Screw & Washer	1
20	60-7880	Unit — Transistor	1
21	60-7900	Wire — Lead	1
*	54-6240	Clutch Assembly (Incl. Ref. #10, 14)	1

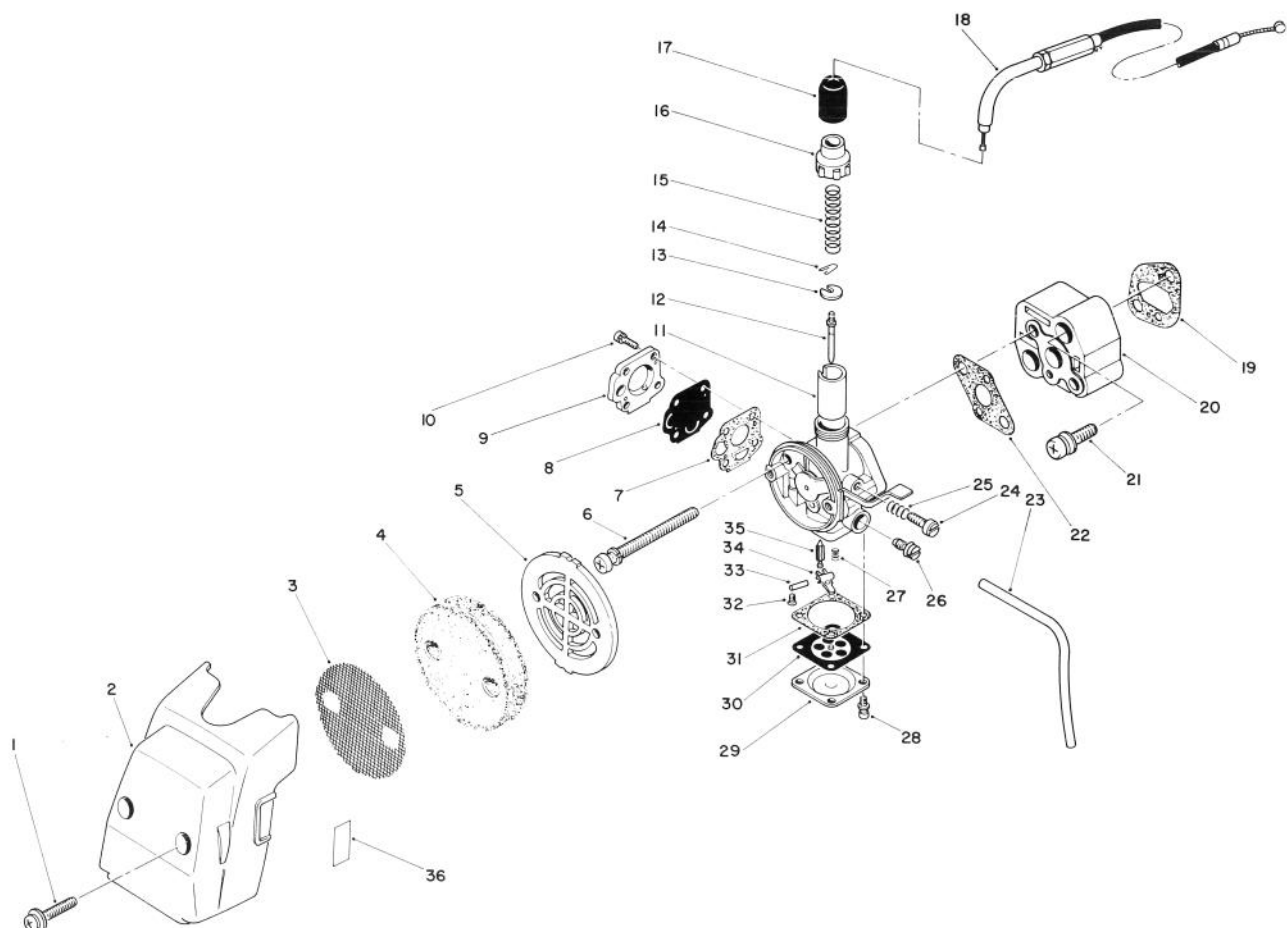
\*Not Illustrated



## CYLINDER & MUFFLER ASSEMBLY

Ref. No.	Part No.	Description	No. Used
1	60-7670	Guard — Spark Plug	1
2	60-7680	Screw & Washer	1
3	60-7690	Cover — Top	1
4	60-8050	Gasket — Muffler	1
5	60-8060	Body — Muffler	1
6	60-8070	Plate	1
7	60-7770	Flange Nut	2
8	60-8090	Plate	1
9	60-8100	Gasket — Muffler Seal	1
10	60-8110	Lid — Muffler	1

Ref. No.	Part No.	Description	No. Used
11	60-8120	Washer — Seal	1
12	60-8130	Bolt — Flange	1
13	60-8140	Gasket	1
14	60-7700	Bolt — Stud	2
15	60-7720	Bolt — Flange	2
16	60-7730	Gasket — Cylinder	1
17	60-7710	Cylinder	1
18	45-0320	Spark Plug	1
19	57-5680	Spark Arrester Muffler (Optional)	1

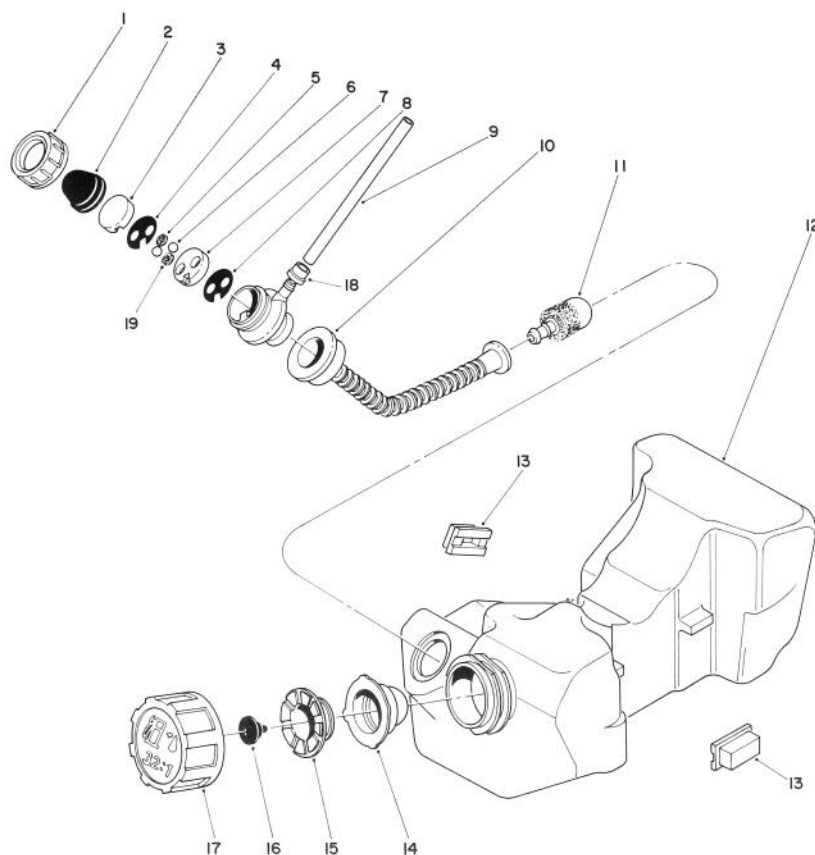


## CARBURETOR & AIR CLEANER ASSEMBLY

Ref. No.	Part No.	Description	No. Used
1	60-8020	Screw & Washer	2
2	60-8030	Case — Cleaner	1
3	54-5180	Screen	1
4	60-8040	Element	1
5	54-5200	Grid	1
*	60-8010	Air Cleaner Assembly (Incl. Ref. #2-5 & 36)	1
6	54-4870	Screw & Washer	2
7	54-5010	Gasket — Pump Cover	1
8	54-5020	Diaphragm — Pump	1
9	60-7980	Pump Cover Assembly	1
10	54-5040	Screw & Washer	4
11	60-7970	Valve — Throttle	1
12	60-7960	Jet Needle Assembly	1
13	60-7950	Retainer — Spring	1
14	54-5120	Clip — Needle	1
15	54-4920	Spring — Throttle	1
16	54-4910	Cap — Mixing Chamber	1
17	54-4900	Cap — Rubber	1
18	60-8000	Wire — Throttle	1
19	60-7920	Gasket — Insulator	1

Ref. No.	Part No.	Description	No. Used
20	60-7910	Insulator	1
21	60-7930	Screw & Washer	2
22	60-7940	Gasket — Carburetor	1
23	56-9000	Tube — Fuel	1
24	54-4970	Screw — Adjusting	1
25	54-4960	Spring — Adjusting Screw	1
26	54-6100	Main Jet Needle Assembly	1
27	54-4990	Spring — Inlet Valve	1
28	54-5110	Screw & Washer	4
29	54-5100	Cover — Main Diaphragm	1
30	54-5090	Main Diaphragm Assembly	1
31	54-5000	Gasket — Main Diaphragm	1
32	54-5080	Screw — Float Pin Set	1
33	54-5070	Pin — Float	1
34	54-5060	Air — Float	1
35	54-5050	Valve — Float	1
36	54-5170	Decal — Choke	1
*	60-7990	Carburetor Assembly (Incl. Ref. #7-17 & 24-35)	1

\*Not Illustrated

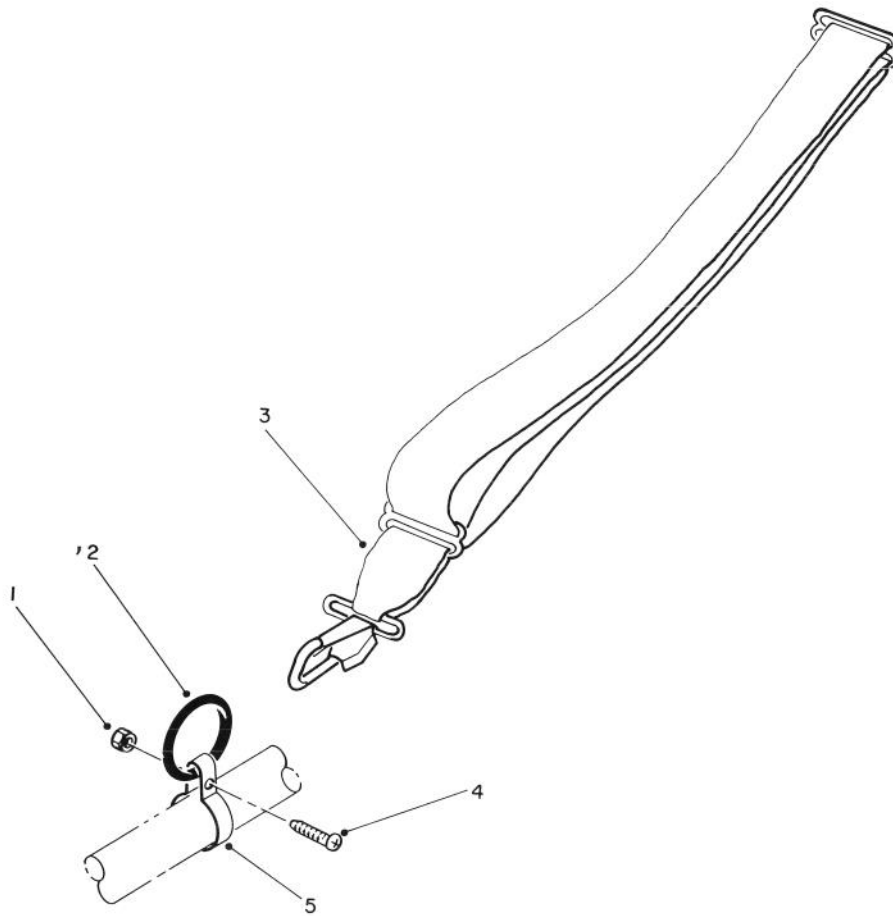


## FUEL TANK ASSEMBLY

Ref. No.	Part No.	Description	No. Used
1	54-5510	Nut — Cap	1
2	54-5520	Cap	1
3	54-5530	Seat — Valve	1
4	54-5460	Gasket	1
5	54-5470	Sponge	1
6	54-5480	Ball	2
7	54-5490	Seat — Valve	1
8	54-5500	Gasket	1
9	54-7040	Tube — Fuel	1
10	60-8270	Hose — Suction	1
11	54-5540	Filter — Fuel	1
12	60-8290	Fuel Tank Assembly (Incl. Ref. #1-8, 10, 11, 14-17, & 19)	1

Ref. No.	Part No.	Description	No. Used
13	60-8280	Pad	4
14	54-5630	Gasket	1
15	54-5620	Holder	1
16	54-5610	Valve — Breather	1
17	54-5600	Cap — Tank	1
18	54-5550	Clip	1
19	60-8260	Cushion — Ball	1
*	54-5570	Priming Pump Assembly (Incl. Ref. #1-8, & 19)	1
*	54-5590	Tank Cap Assembly (Incl. Ref. #14-17)	1

\*Not Illustrated



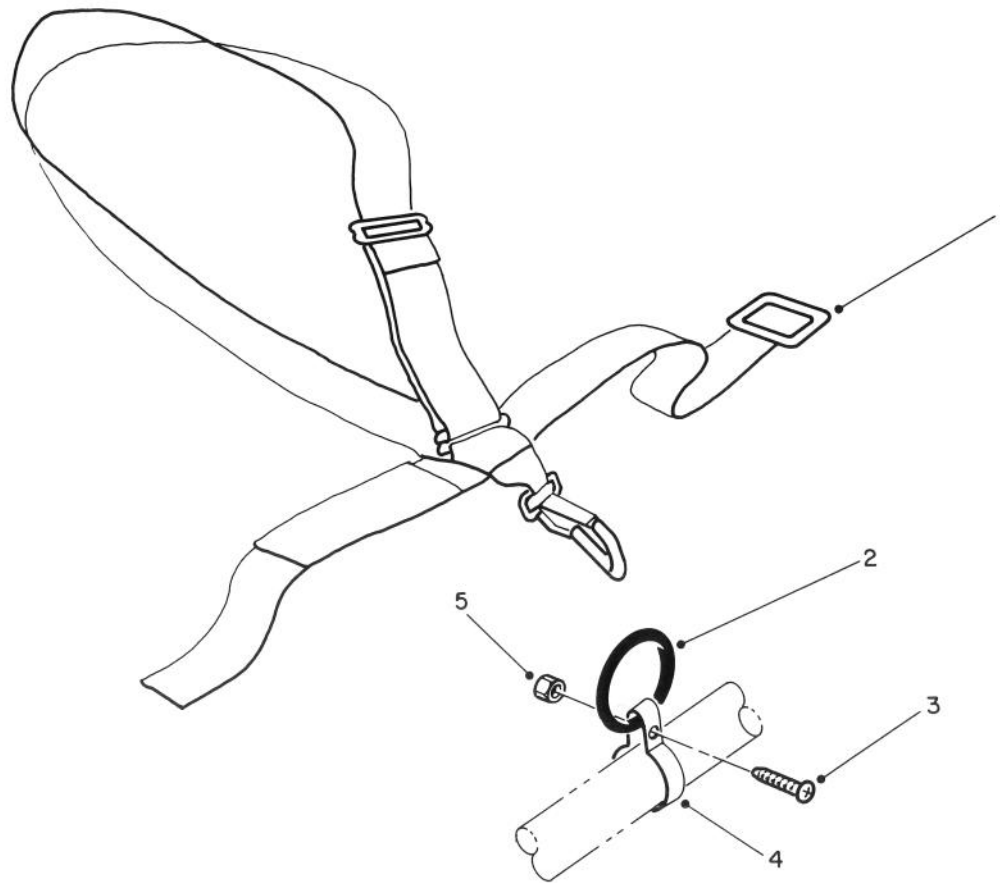
## SHOULDER HARNESS (OPTIONAL)

Ref. No.	Part No.	Description	No. Used
1	3296-12	Nut	1
2		Ring	1
3	46-2951	Standard Harness	1
*	46-2691	Clamp & Ring Kit (Incl. Ref. #1, 2, 4, & 5)	1

Ref. No.	Part No.	Description	No. Used
4	3251-4	Screw	1
5		Clamp	1

\*Not Illustrated



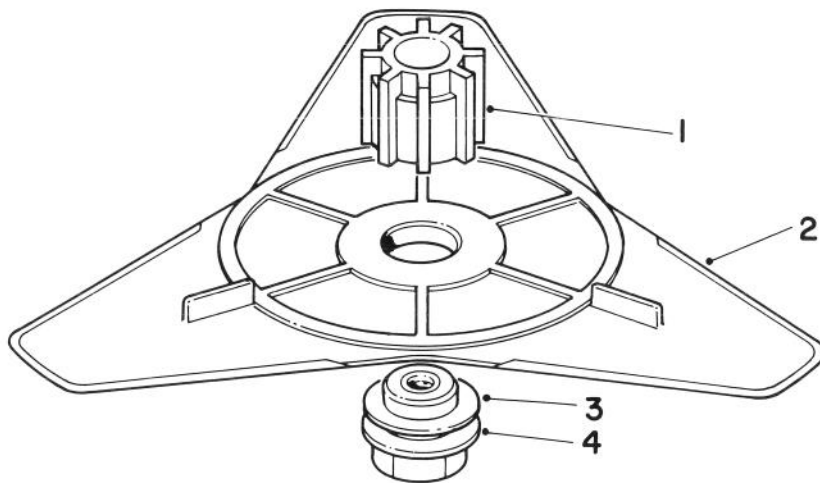


## DELUXE SHOULDER/BELT HARNESS (OPTIONAL)

Ref. No.	Part No.	Description	No. Used
1	46-2961	Deluxe Harness	1
*	46-2691	Clamp & Ring Kit	1
2		(Incl. Ref. #2-5) Ring	1

Ref. No.	Part No.	Description	No. Used
3	3251-4	Screw	1
4		Clamp	1
5	3296-12	Nut	1

\*Not Illustrated



## FLEX BLADE KIT 44-9870 (Optional)

Ref. No.	Part No.	Description	No. Used
1	44-2410	Adapter — Blade	1
2	46-2790	Blade — Flex	1
3	51-1340	Washer	1

Ref. No.	Part No.	Description	No. Used
4	44-2420	Nut — Adapter	1
*	46-2951	Shoulder Harness	1
*	46-2691	Clamp & Ring Kit	1

\*Not Illustrated

## PRODUCT CHANGES

In an effort to make improvements available to TORO owners as quickly as possible, minor changes are incorporated into Toro's products from time to time that do not become immediately shown in the Parts Catalog. If such a change apparently has been made in your unit, which is not reflected in your manual, see your TORO Distributor or his Authorized TORO Service Dealer for information and part numbers.

## IDENTIFICATION AND ORDERING

### MODEL AND SERIAL NUMBERS

The Trimmer has two identification numbers: a model number and a serial number. The two numbers are stamped on a decal which is located in front of throttle lever on bottom side of drive shaft tube. In any correspondence concerning the trimmer, supply model and serial numbers to assure that correct information and replacement parts are obtained.

To order replacement parts from an Authorized TORO Service Dealer, supply the following information:

1. Model and serial numbers of the trimmer.
2. Part number, description, and quantity of part(s) desired.

**NOTE:** Do not order by reference number if a parts catalog is being used; use the PART NUMBER.

## The Toro Promise

### TORO GAS TRIMMER/WEEDER A TWO YEAR LIMITED WARRANTY

*The Toro Company promises to repair any TORO Product if defective in materials or workmanship. The following time periods from the date of purchase apply:*

Residential Product ..... 2 Years  
Residential Products Used Commercially .... 45 Days

*The costs of parts and labor are included, but the customer pays the transportation costs. Just return any residential product to an Authorized TORO Service Dealer or TORO Distributor.*

Should you feel your TORO Product is defective and wish to rely on The Toro Promise, the following procedure is recommended:

1. Contact any Authorized TORO Service Dealer, TORO Master Service Dealer, or TORO Distributor (the Yellow Pages of your telephone directory is a good reference source).
2. He will either instruct you to return the product to him or recommend another Authorized TORO Service outlet which might be more convenient.
3. Bring the product along with your original sales slip, or other evidence of purchase date, to the service dealer.
4. The servicing dealer will inspect the unit, advise you whether the product is defective and, if so, make all repairs necessary to correct the defect without extra charge to you.

If for any reason you are dissatisfied with the dealer's analysis of the defect or the service performed, you may contact us.

Write: TORO Consumer Service Department  
8111 Lyndale Avenue South  
Minneapolis, Minnesota 55420

The above remedy of product defects through repair by an Authorized TORO Service Dealer is the purchaser's sole remedy for any defect.

THERE IS NO OTHER EXPRESS WARRANTY. ALL IMPLIED WARRANTIES OF MERCHANTABILITY AND FITNESS FOR USE ARE LIMITED TO THE DURATION OF THE

### EXPRESS WARRANTY.

Some states do not allow limitations on how long an implied warranty lasts, so the above limitation may not apply to you.

This warranty applies only to parts or components which are defective and does not cover repairs necessary due to normal wear, misuse, accidents, or lack of proper maintenance. Regular, routine maintenance of the unit to keep it in proper operating condition is the responsibility of the owner.

All warranty repairs reimbursable under The Toro Promise must be performed by an Authorized TORO Service Dealer using Toro approved replacement parts.

Repairs or attempted repairs by anyone other than an Authorized TORO Service Account are not reimbursable under The Toro Promise. In addition, these unauthorized repair attempts may result in additional malfunctions, the correction of which is not covered by warranty.

THE TORO COMPANY IS NOT LIABLE FOR INDIRECT, INCIDENTAL OR CONSEQUENTIAL DAMAGES IN CONNECTION WITH THE USE OF THE PRODUCT INCLUDING ANY COST OR EXPENSE OF PROVIDING SUBSTITUTE EQUIPMENT OR SERVICE DURING PERIODS OF MALFUNCTION OR NON-USE.

Some states do not allow the exclusion or limitation of incidental or consequential damages, so the above limitation or exclusion may not apply to you.

This warranty gives you specific legal rights, and you may also have other rights which vary from state to state.

## COUNTRIES OTHER THAN THE UNITED STATES OR CANADA

Customers who have purchased TORO products exported from the United States or Canada should contact their TORO Distributor (Dealer) to obtain guarantee policies for your country, province or state. If for any reason you are dissatisfied

with your Distributor's service or have difficulty obtaining guarantee information, contact the TORO importer. If all other remedies fail, you may contact us at The Toro Company.

## MAINTENANCE RECORD

[illegible]