

# 42in Mulching Kit Zero-Radius Turn Riding Mowers

Model No. 108-7194

## Parts Catalog

### Ordering Replacement Parts

To order replacement parts, please supply the part number, the quantity, and the description of each part desired.

### Understanding Reference Numbers

Each Identified part in an illustration has a reference number. The reference number for a part also appears in the parts list, along with other information about the part.

This catalog uses two special reference number formats, one to indicate parts in a service assembly and another to indicate the quantity of a given part in an illustration.

### Service Assembly Reference Numbers

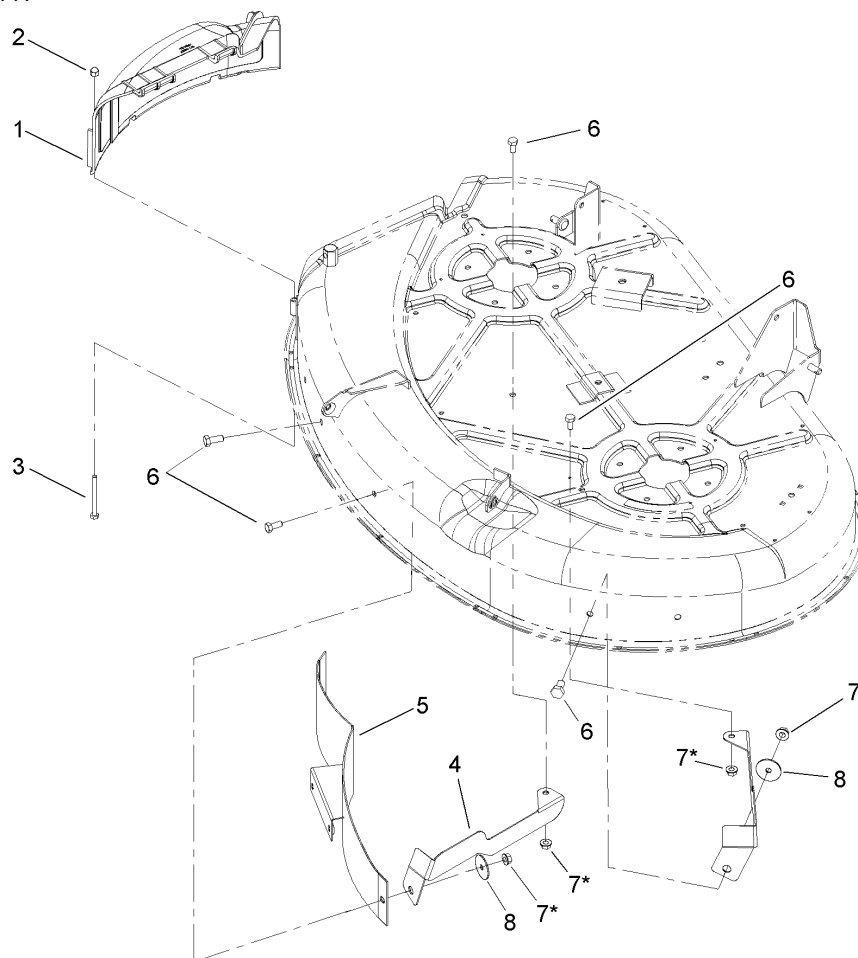
Parts in service assemblies have reference numbers in the form a:b. The a represents the reference number of the entire service assembly and the b represents a sequential number unique to each part within the service assembly.

For example, a wheel assembly might be identified by reference number 6, the tire by 6:1, the valve by 6:2, and the wheel by 6:3. When you order the assembly identified by reference number 6, you receive all parts identified by reference numbers 6:1, 6:2, and 6:3. However, you may also order any part individually. Reference numbers of this type appear in illustrations and in part lists.

### Reference Numbers Indicating Quantity

In an illustration, if a reference number indicates more than one part, the reference number has the form nX y. The n represents the quantity of the part, the X is the multiplication symbol, and the y represents the reference number.

For example, in an illustration, the reference number 2X 37 means that two of the parts identified by reference number 37 are indicated.



\*Retain from ZRT machine

## 42in Mulch Kit Assembly

| Ref | Part No.    | Qty. | Description           |  |  |  |  |
|-----|-------------|------|-----------------------|--|--|--|--|
| 1   | 107-2527    | 1    | Cover-Discharge, Deck |  |  |  |  |
| 2   | 32111-7     | 2    | Nut-Cap               |  |  |  |  |
| 3   | 321-55      | 2    | Screw-HH              |  |  |  |  |
| 4   | 108-8509-03 | 2    | Baffle-Mulch          |  |  |  |  |
| 5   | 106-8721-03 | 1    | Baffle-Front, Right   |  |  |  |  |
| 6   | 322-3       | 6    | Screw-HH              |  |  |  |  |
| 7   | 32128-25    | 3    | Nut-HF                |  |  |  |  |
| 8   | 3256-68     | 2    | Washer-Flat           |  |  |  |  |