



Power Shovel[™] Plus

Model No. 38360 - 250000001 and up.

Parts Catalog

Ordering Replacement Parts

To order replacement parts, please supply the part number, the quantity, and the description of each part desired.

Understanding Reference Numbers

Each Identified part in an illustration has a reference number. The reference number for a part also appears in the parts list, along with other information about the part.

This catalog uses two special reference number formats, one to indicate parts in a service assembly and another to indicate the quantity of a given part in an illustration.

Service Assembly Reference Numbers

Parts in service assemblies have reference numbers in the form a:b. The a represents the reference number of the entire service assembly and the b represents a sequential number unique to each part within the service assembly.

For example, a wheel assembly might be identified by reference number 6, the tire by 6:1, the valve by 6:2, and the wheel by 6:3. When you order the assembly identified by reference number 6, you receive all parts identified by reference numbers 6:1, 6:2, and 6:3. However, you may also order any part individually. Reference numbers of this type appear in illustrations and in part lists.

Reference Numbers Indicating Quantity

In an illustration, if a reference number indicates more than one part, the reference number has the form nX y. The n represents the quantity of the part, the X is the multiplication symbol, and the y represents the reference number.

For example, in an illustration, the reference number 2X 37 means that two of the parts identified by reference number 37 are indicated.

Contents

Description	Page	Description	Page
Housing Assembly 3	Rotor and Drive Assembly 5
Handle Assembly 4		

Part Description Abbreviations

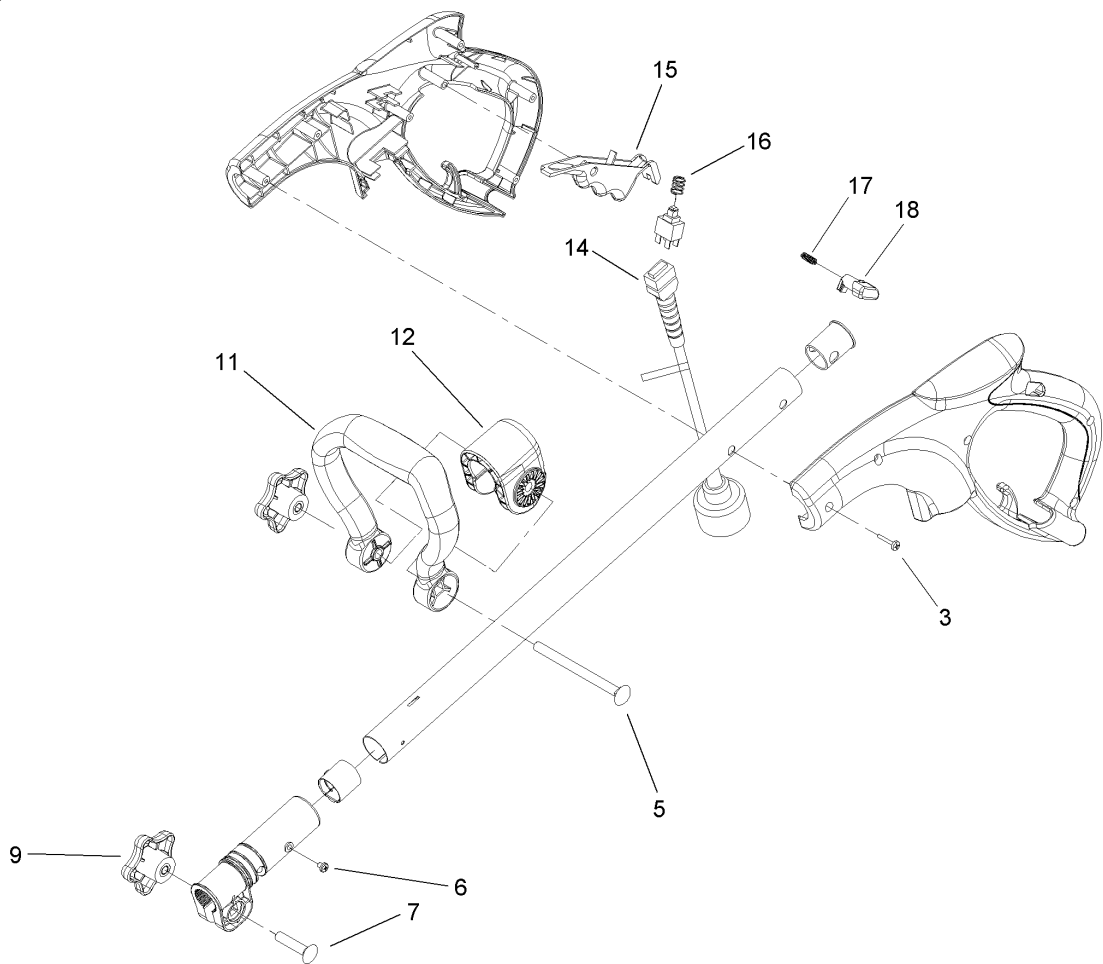
Part descriptions in this catalog may include the following abbreviations.

AR.	as required	INC.	incorporated
ASM.	assembly	LH.	left hand
CARR.	carriage	NI.	nylon insert
DEG.	degrees	NPTF.	national pipe thread fine
FH.	flat head	PPH.	phillips pan head
GA.	gauge	PRH.	phillips round head
HF.	hex flange	PTH.	phillips truss head
HH.	hex head	PTO.	power take off
HHF.	hex head flange	RH.	right hand
HHFTF.	hex head flange thread forming	SFH.	slotted fillister head
HJ.	hex jam	SHH.	slotted hex head
HLH.	hex lag head	SHWH.	slotted hex washer head
HOC.	height-of-cut	SPH.	slotted pan head
HS.	hex	SQH.	square head
HSBH.	hex socket button head	SRH.	slotted round head
HSFH.	hex socket flat head	STD.	standard
HSH.	hex socket head	TAP.	self tapping
HWH.	hex washer head	TTH.	torx truss head
HWHTF.	hex washer head thread forming	WH.	wing head
HYD.	hydraulic		

Footnotes

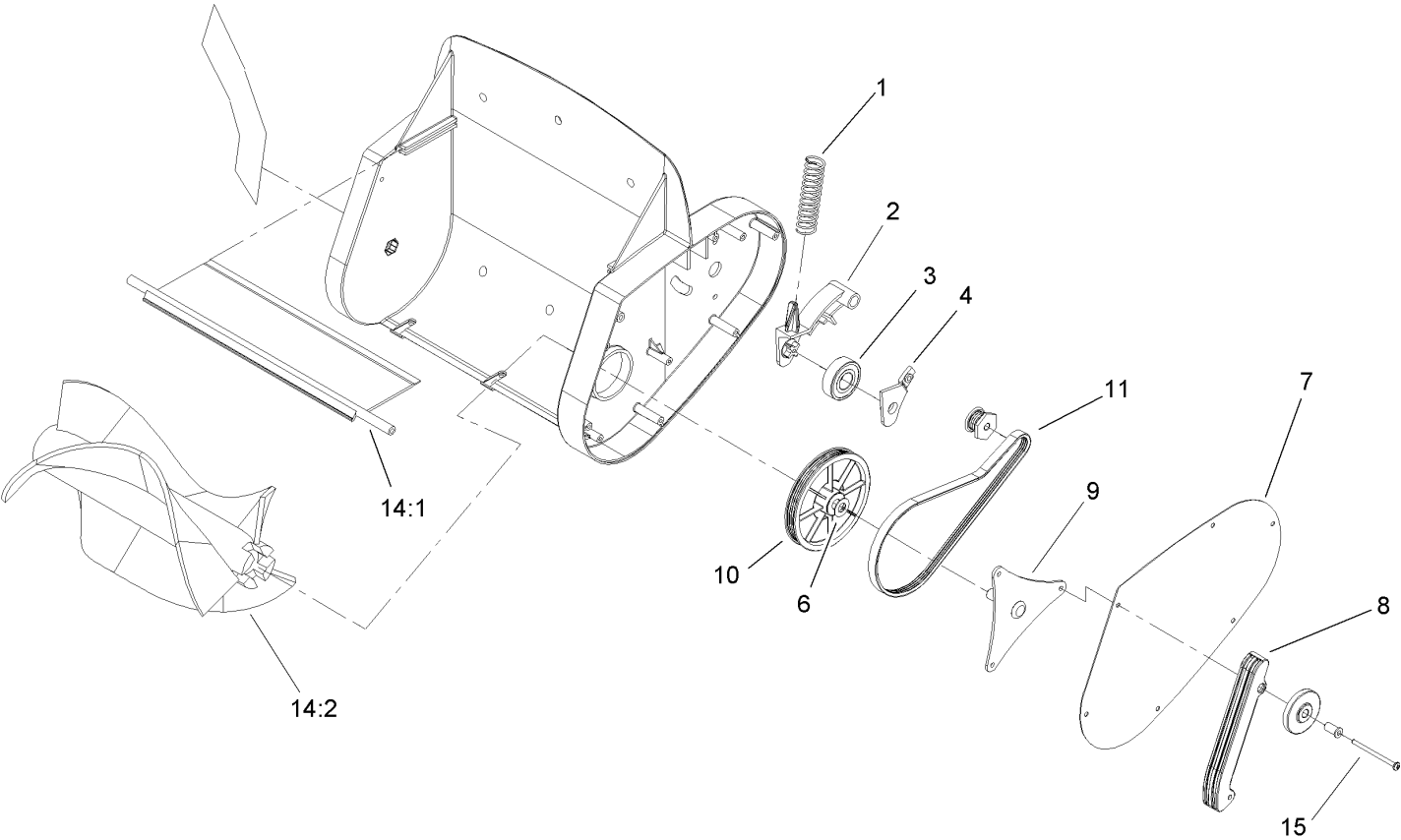
- ❶ Not serviced separately

3



Handle Assembly

Ref	Part No.	Qty.	Description				
3	94-4496	38	Screw-PPH				
5	106-9758	1	Screw-Carriage				
6	106-9779	1	Screw-Self Tapping				
7	33-5790	1	Bolt-Carriage				
9	106-4161	2	Knob-Handle				
11	106-9759	1	Handle-Assist				
12	106-9760	1	Collar-Handle, Assist				
14	106-9764	1	Wire ASM				
15	105-9435	1	Trigger-Trim				
16	106-9791	1	Spring-Compression, Trigger				
17	106-9778	1	Spring-Compression, Safety				
18	106-9766	1	Button-Safety				



Rotor and Drive Assembly

Ref	Part No.	Qty.	Description				
1	61-8880	1	Spring				
2	106-9796	1	Arm-Idler				
3	100-1048	1	Bearing-Ball				
4	106-9797	1	Retainer-Pulley, Idler Arm				
6	37-8080	1	Washer-Thrust				
7	106-9780-03	1	Plate-Side				
8	106-9788	1	Scraper-Left, Sweep				
9	106-9781	1	Pulley Bracket ASM				
10	107-9986	1	Pulley ASM				
11	106-9767	1	Belt-Drive				
14		1	Loose Parts ASM				
14:1	107-9961	1	Deflector And Decal ASM				
14:2	106-9772	1	Brush-Rotor				
15	107-9974	1	Screw-PPH				

NOTES

NOTES

