



Automatic Tailgate Release Kit

Workman 3000 Series

Part No. 92-1220

Form No. 3315-461 Rev B

Installation Instructions

Note: Before installing automatic tailgate release kit, install bed, bed sides and tailgate.

Note: Left, right, front and rear of machine is determined while seated in operator's position.

1. If bed is raised to ease installation, be sure to use safety support.
2. To use bed safety support:
 - A. Raise bed until cylinders are fully extended.
 - B. Remove bed support from storage location.
 - C. Push bed support onto cylinder rod, making sure support end tabs rest on end of cylinder barrel and on cylinder rod end.
 - D. To store bed support, remove bed support from cylinder and return it to its storage position.
 - E. Always install or remove bed support from outside of bed.
 - F. Do not try to lower bed with bed safety support on cylinder.



3. Remove capscrews and washers mounting tailgate pivot brackets. Pivot brackets upward into storage position and re-secure with front capscrews. Reinstall rear capscrews securing corners of bed sides to bed (Fig. 1).

Note: To use tailgate in standard operating position, reinstall tailgate pivot brackets.

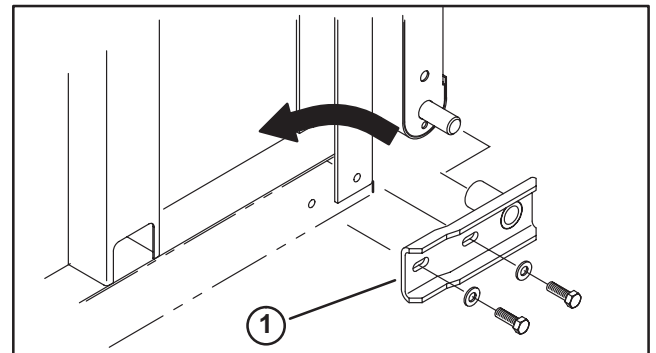


Figure 1

1. Pivot bracket

4. Slide a tailgate pivot shaft under each side of bed and over bed frame channels until they meet at rear, center of bed (Fig. 2). Pivot shaft with welded bracket to be used on left side. Both shafts to be positioned rear of bed pivot brackets.

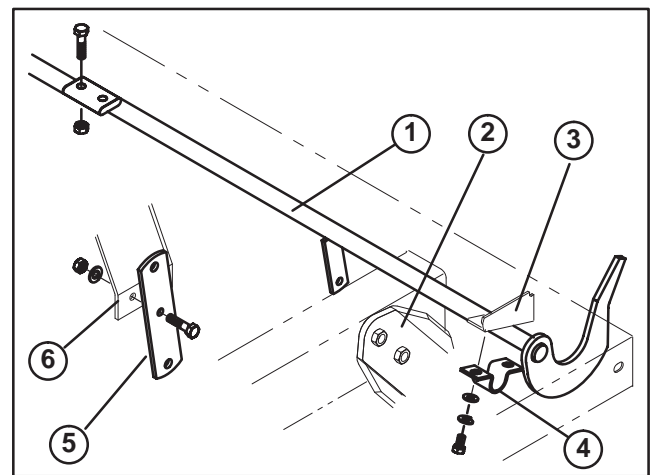


Figure 2

- | | |
|--------------------------|-----------------------|
| 1. Tailgate pivot shaft | 4. Pivot shaft keeper |
| 2. Bed pivot bracket | 5. Pivot lever |
| 3. Bed mounting brackets | 6. Bent bracket |
5. Secure ends of pivot shafts together with (2) 5/16-18 x 1-1/4" lg. capscrews and locknuts (Fig. 2). Check to assure shafts are aligned. Loosen screws and realign if necessary. Tighten capscrews securely.

6. Loosely mount outer ends of each pivot shaft to mounting brackets on underside of bed with a pivot shaft keeper, (2) 1/4–20 x 1/2" lg. capscrews, lockwashers and flat washers (Fig. 2).
7. Rotate shafts so curved latches hold tailgate closed. While holding latches firmly against tailgate, tighten capscrews securing shaft keeper brackets to underside of bed.
8. With a 5/16–18 x 1–1/4" lg. capscrew, flat washer and locknut, mount pivot lever to bent bracket on underside of bed. Shorter, (2 1/2") end of lever to be positioned upward, towards bed (Fig. 2). Do not over tighten capscrew. Lever must pivot freely.
9. Mount curved end of pivot link rod assembly to bottom hole in pivot lever with a washer and cotter pin (Fig. 3).

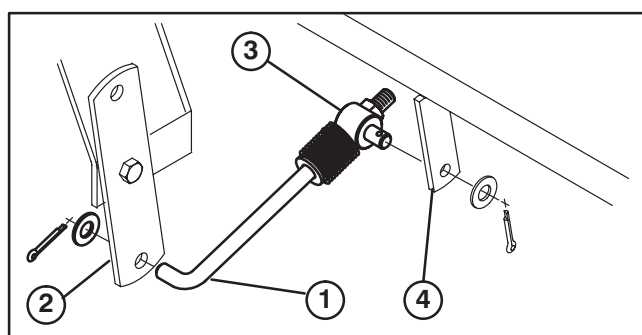


Figure 3

- | | |
|-------------------|---------------------------|
| 1. Pivot link rod | 3. Rod fitting |
| 2. Pivot lever | 4. Tailgate shaft bracket |

10. Mount rod fitting to tailgate shaft bracket with a flat washer and cotter pin (Fig. 3).

CAUTION: Spring on pivot link rod assembly is tensioned at the factory. Remove nut carefully if disassembly is required.

11. Secure rear dump link to top hole in pivot lever with a washer and cotter pin (Fig. 4).

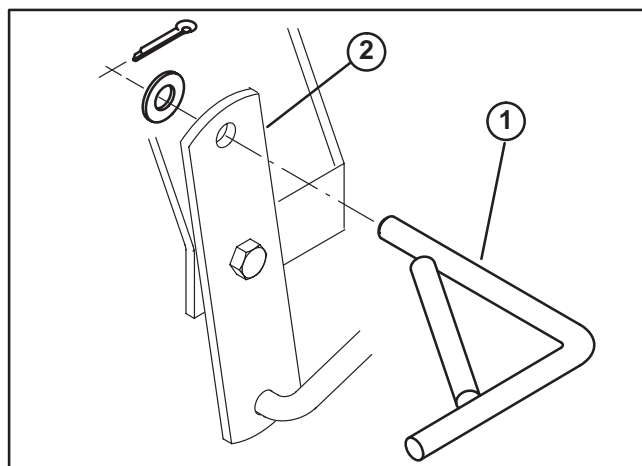


Figure 4

- | |
|-------------------|
| 1. Rear dump link |
| 2. Pivot lever |

12. Determine which position bed is mounted in, forward or rearward. For next step, use short front dump link if bed is mounted in forward (full bed) position and long link if mounted in rearward (2/3 bed) position. Retain other front dump link in case bed position in changed.
13. Using appropriate front dump link, insert shaft end through slot in bed cross tube. Remove lynch pin securing inside end of upper cylinder clevis pin to bed. Insert washer end of dump link onto end of clevis pin and re-secure with lynch pin.
14. Loosely secure front dump link to rear dump link with (2) clamps, positioning as shown in figure 5.
15. With curved latches holding tailgate securely closed and the bed lift cylinders fully retracted, in the down position, adjust the dump link assembly length until there is 1/8" gap between the front of the cylinder pin and the front of the cylinder rod slot (Fig. 5, inset).

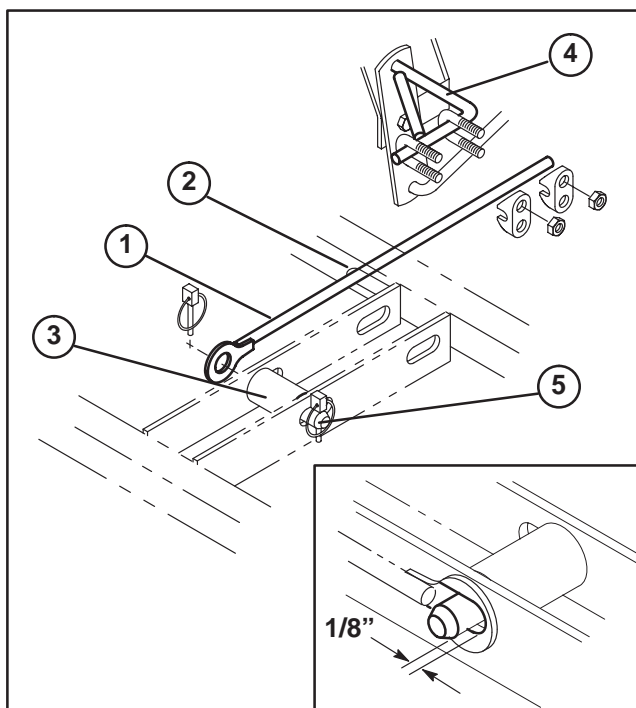


Figure 5

- | |
|-----------------------|
| 1. Front dump link |
| 2. Slot in cross tube |
| 3. Cylinder |
| 4. Rear dump link |
| 5. Cylinder pin |

16. To adjust the tailgate latch, loosen clamps and shorten or lengthen dump link assembly. If tailgate rattles, lengthen dump link assembly. If dump link assembly is too long, linkage could bend when bed is completely lowered.