



Blower Liner Kit

For Z400 and Z500 Twin and Triple Baggers

Model No. 108-2639

Model No. 108-2640

Form No. 3353-411 Rev A

Installation Instructions

Installation

Loose Parts

Use the chart below to verify that all parts have been shipped.

Step	Description	Qty.	Use
1	Blower liner	1	Replacing the Blower Liner
	Fanged elevator bolt	5	
	Flat washer	5	
	Locknut	5	

Step

1

The new liner and fanged elevator bolts may have sharp edges which could cut your hands or cause slivers. Wear gloves when handling them.

Parts needed for this step:

1	Blower liner
5	Fanged elevator bolt
5	Flat washer
5	Locknut

Procedure

1. Disengage the PTO, set the parking brake, and chock or block the drive wheels.
2. Turn off the engine, remove the key, and wait for all moving parts to stop before leaving the operating position.
3. Remove the five bolts that hold the blower liner to the blower (Figure 1 and Figure 2). Discard the hardware.
4. Pull the liner out of the blower (Figure 1).

Note: Do not use your hands to remove the debris.

5. Remove any debris from the blower.
6. Slide the new liner around the blower impeller.

7. Secure the liner to the rear of the blower with 3 fanged elevator bolts (5/16 x 1 inch), flat washers and locknuts (5/16 inch) (Figure 1).

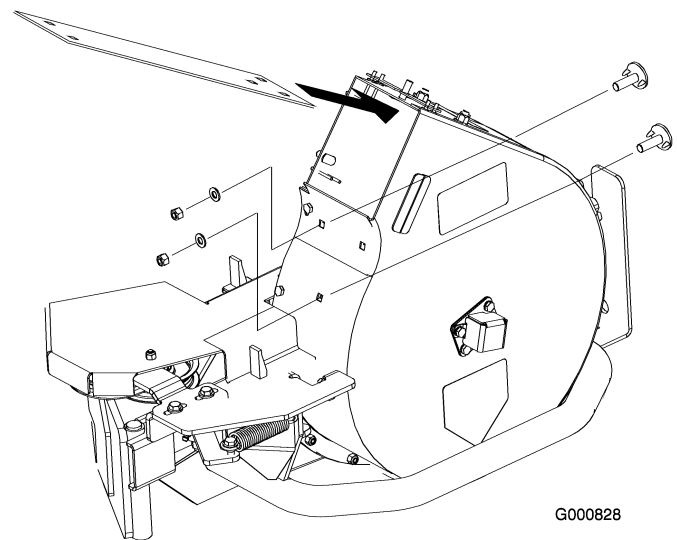


Figure 1

- | | |
|--|-----------------------|
| 1. Blower | 4. Washer, 5/16 inch |
| 2. Liner | 5. Locknut, 5/16 inch |
| 3. Fanged elevator bolt, 5/16 x 1 inch | |

- Install 2 fanged elevator bolts (5/16 x 1 inch), flat washers and locknuts (5/16 inch) into the liner and the blower (Figure 2).

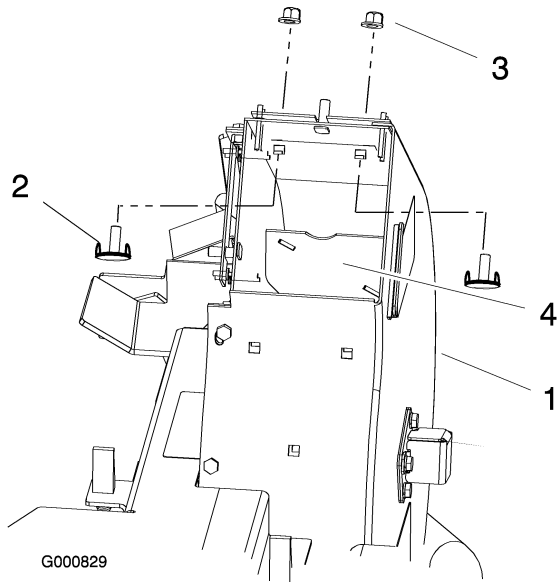


Figure 2

- | | |
|--|-------------------|
| 1. Blower | 3. Nut, 5/16 inch |
| 2. Fanged elevator bolt, 5/16 x 1 inch | 4. Impeller |

- Using a block of wood, push the liner down toward the front of blower, until the blower liner tightly conforms to the inside of the blower (Figure 3). This will provide clearance between the impeller and the liner.

- While holding the liner, tighten the 2 top bolts in the liner and the blower (Figure 3).

- Rotate the blower pulley to verify that the blower fan does not hit the liner (Figure 3). Adjust the liner if necessary.

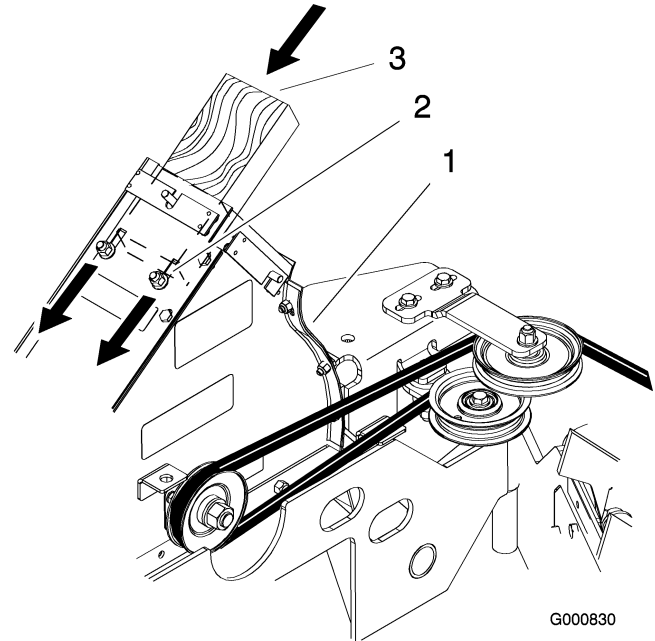


Figure 3

- | | |
|---------------------|---------------|
| 1. Blower | 3. Wood block |
| 2. Top bolt and nut | |