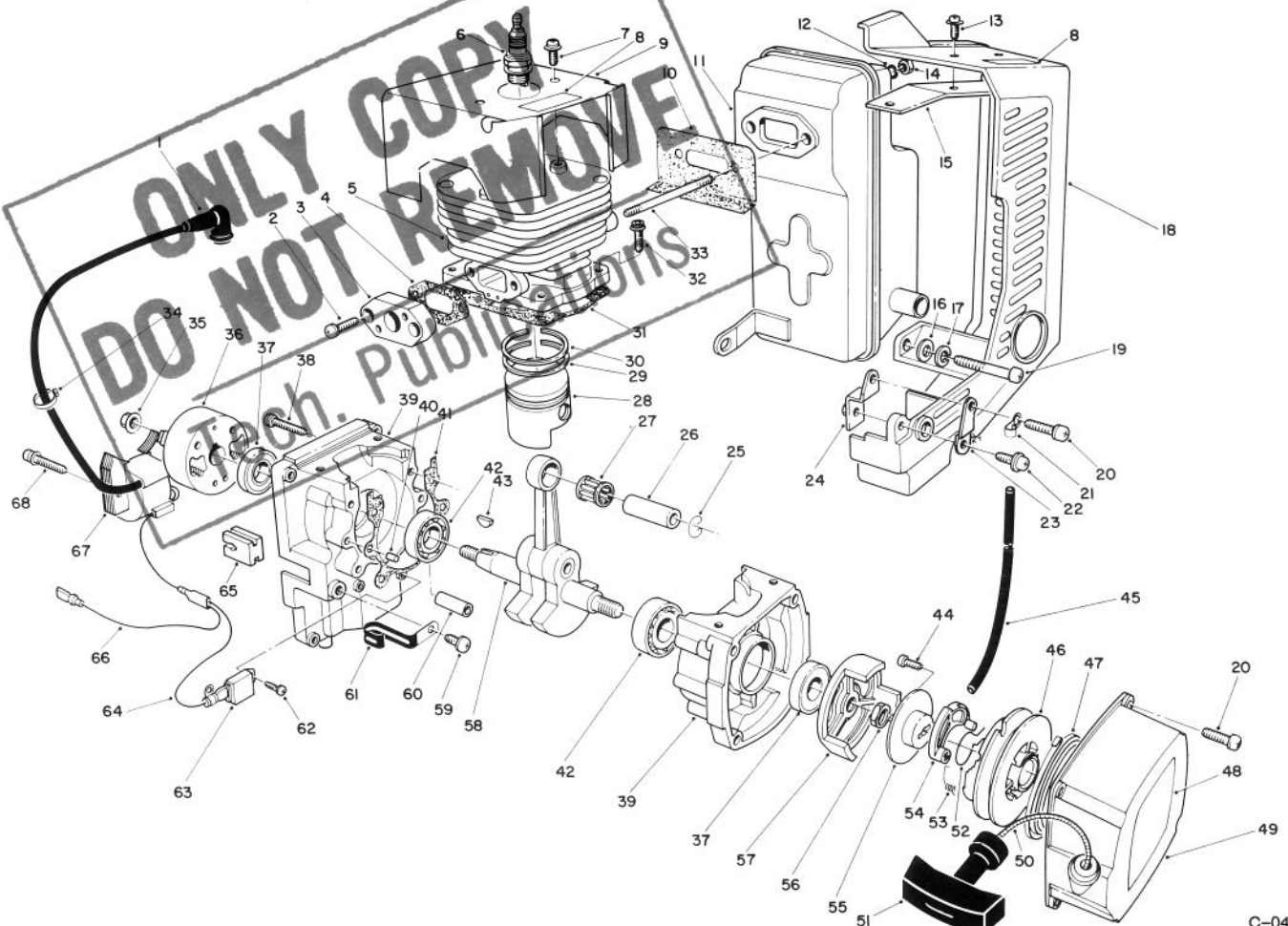




MODEL NO. 30941-0000001 Thru  
1000001 & UP

## PARTS CATALOG

### POWER BLOWER



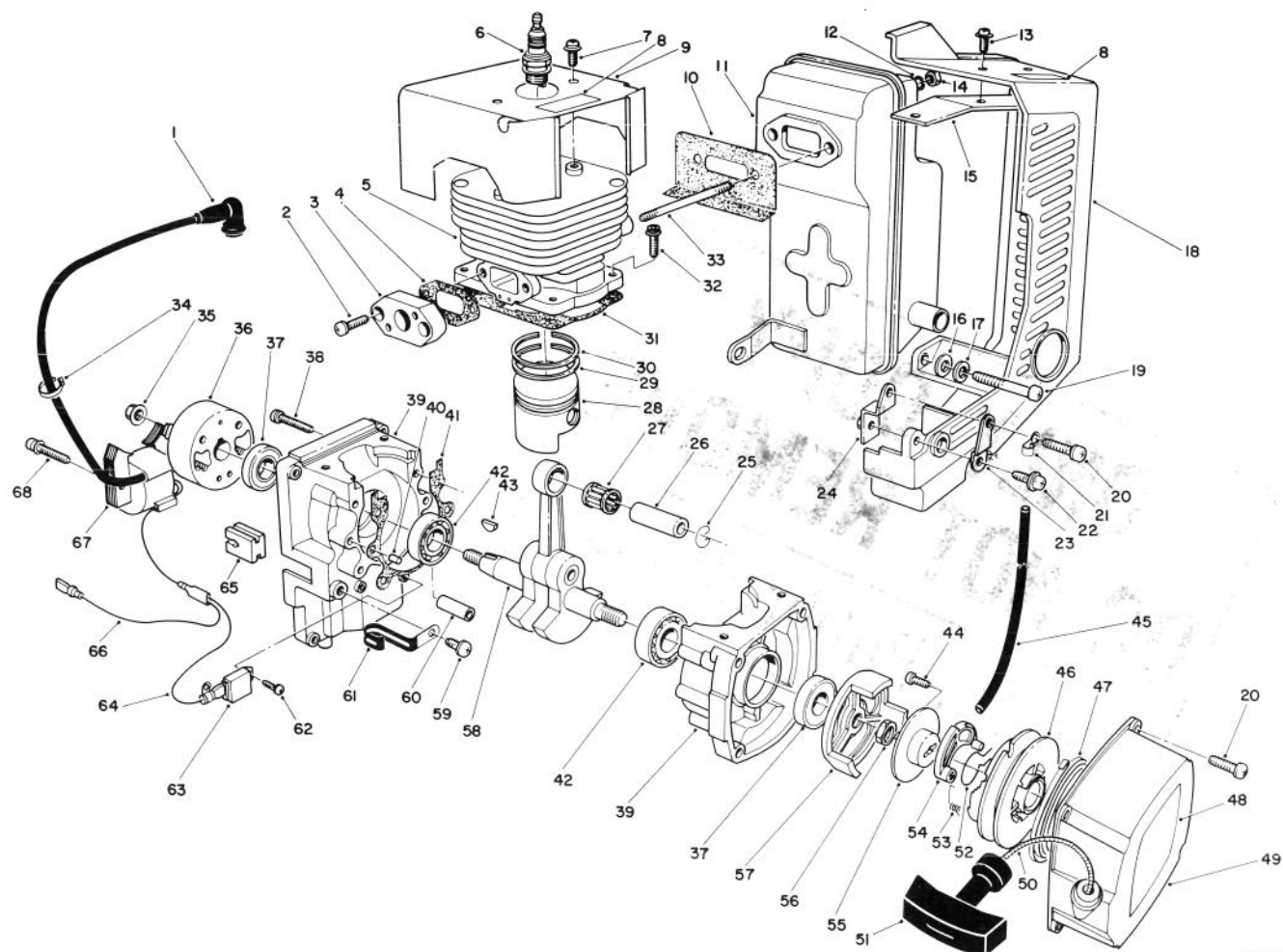
C-0487

### ENGINE & MUFFLER ASSEMBLY

Ref. No.	Part No.	Description	No. Used
1	54-4730	Cap - Plug	1
2	56-8350	Screw	2
3	56-8420	Flange	1
4	56-8430	Gasket	1
5	56-8180	Cylinder	1
6	56-8290	Spark Plug	1
7	54-6890	Screw/Washer	2
8	65-2690	Decal - Hot Surface	2
9	56-8160	Cover - Cylinder	1
10	56-8740	Gasket - Muffler	1
11	56-8750	Muffler	1
12	56-8760	Washer - Lock	2
13	56-8790	Screw	2
14	56-8770	Nut	2
15	56-8780	Bracket	1

Ref. No.	Part No.	Description	No. Used
16	56-8810	Washer	1
17	56-8820	Washer - Lock	1
18	56-8800	Cover - Muffler	1
19	56-8830	Screw	1
20	56-8880	Screw	4
21	56-8890	Clamp	1
22	56-8840	Screw	1
23	56-8850	Bracket	1
24	56-8860	Bracket	1
25	56-8230	Clip - Piston Pin	2
26	56-8260	Pin - Piston	1
27	56-8270	Bearing - Needle	1
28	56-8240	Piston (incl. Ref.#26)	1
29	56-8220	Ring	1
30	56-8210	Ring	1

TPS



C-0487

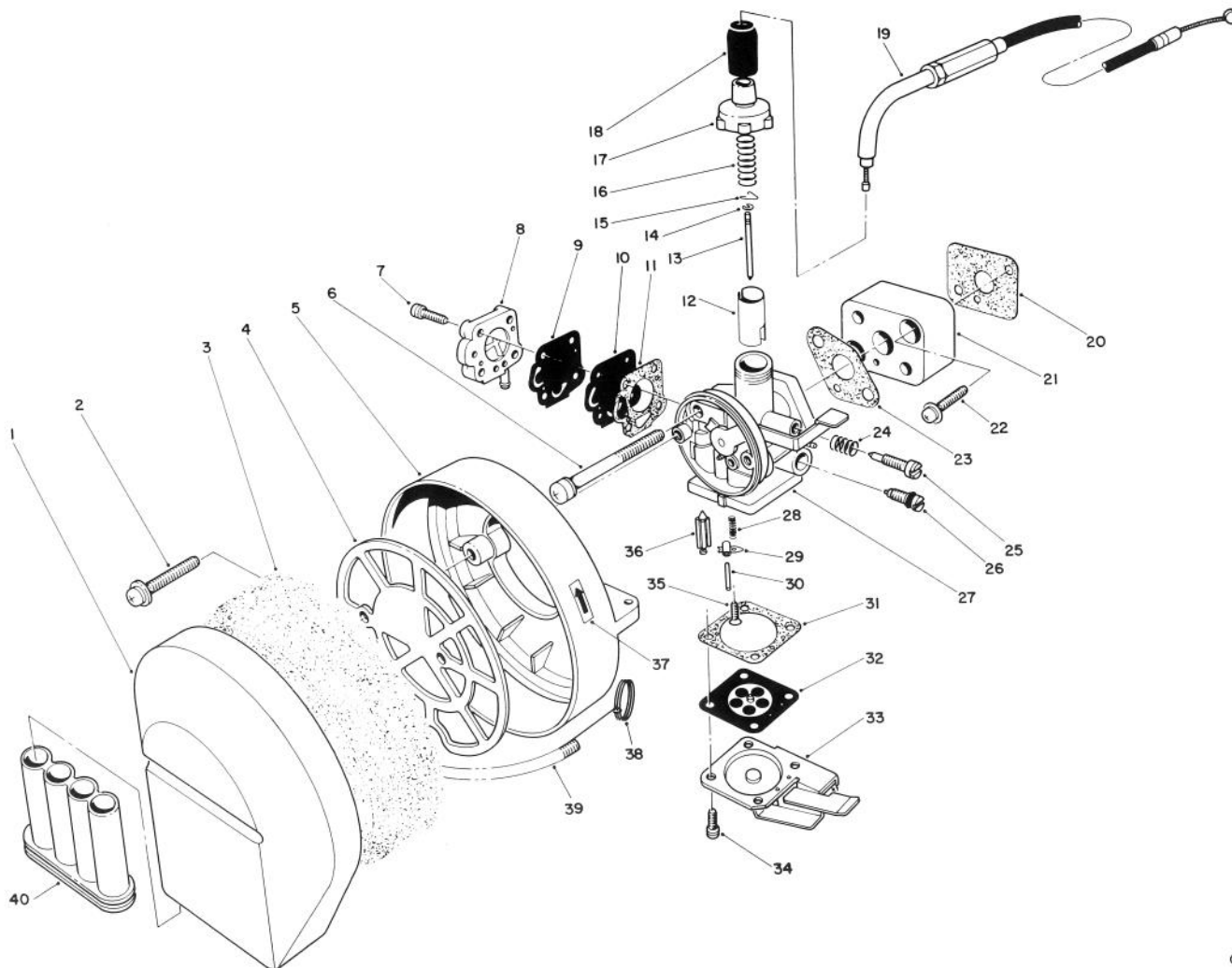
## ENGINE & MUFFLER ASSEMBLY(Continued)

Ref. No.	Part No.	Description	No. Used
31	56-8200	Gasket - Cylinder	1
32	56-8190	Bolt - Flange	4
33	56-8170	Bolt - Stud	2
34	54-5990	Cable Tie	1
35	54-4670	Nut	1
36	56-8300	Rotor	1
37	56-8120	Seal - Oil	2
38	54-5760	Screw	4
39	56-8110	Crankcase Assembly (Incl. Ref. #38, 40)	2
40	54-4510	Pin - Dowel	2
41	56-8150	Gasket - Crankcase	1
42	54-5680	Bearing - Ball	2
43	56-8250	Key - Woodruff	1
44	54-6340	Screw	1
45	56-8380	Tube - Fuel	1
46	56-8950	Reel	1
47	56-8960	Spring	1
48	63-9430	Decal - 41CC Power Blower	1
49	56-8990	Case - Starter	1
50	56-8980	Rope - Starter	1
51	56-8970	Knob - Starter	1

Ref. No.	Part No.	Description	No. Used
52	54-6320	Spring - Friction	1
53	54-6330	Spring - Return	1
54	56-8940	Ratchet	1
55	56-8930	Plate -Friction	1
56	56-8910	Nut	1
57	56-8920	Pulley - Starter	1
58	6-8280	Crankshaft	1
59	56-8140	Screw	1
60	56-8870	Pipe	1
61	56-8130	Clamp	1
62	54-4610	Screw	2
63	56-8320	Transistor - Unit	1
64	56-8330	Wire - Lead	1
65	56-8340	Grömmet	1
66	56-9300	Wire - Lead	1
67	56-8310	Coil - Ignition	1
68	54-4790	Bolt	2
*	56-8900	Recoil Assembly(Incl. Ref.# 44,46-48,50-55 & 57)	1
+	61-4330	Spark Arrester Muffler Assembly	1

\*Not Illustrated

+See Page 6



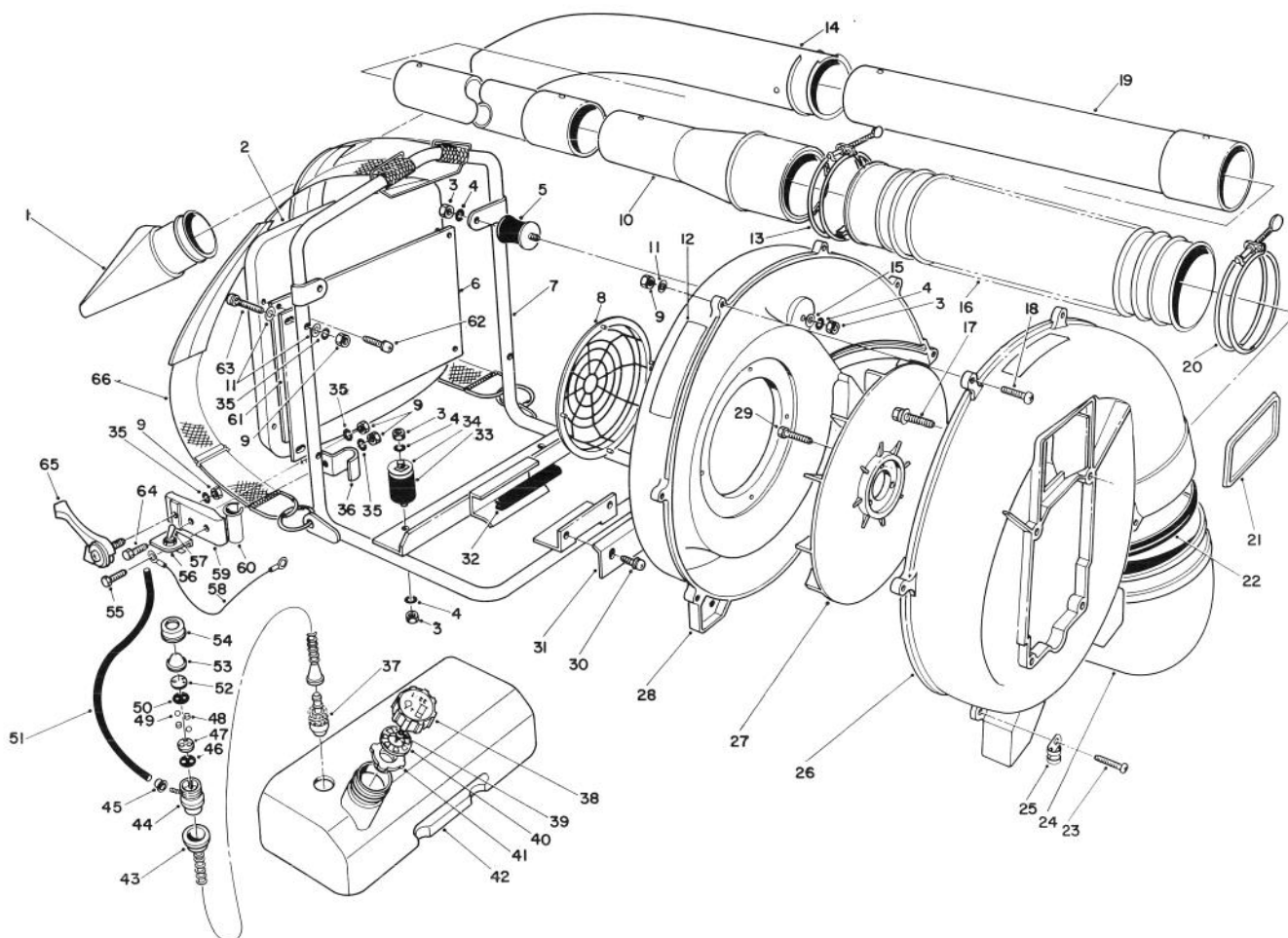
C-0488

## CARBURETOR & AIR CLEANER ASSEMBLY

Ref. No.	Part No.	Description	No. Used
1	56-8690	Cover - Air Cleaner	1
2	56-8720	Screw	2
3	56-8700	Element - Air Cleaner	1
4	56-8710	Grid	1
5	56-8730	Case - Air Cleaner	1
6	54-8360	Screw	2
7	56-8440	Screw	4
8	56-8450	Cover - Pump	1
9	56-8460	Diaphragm	1
10	56-8470	Valve - Check	1
11	56-8480	Gasket - Pump Cover	1
12	56-8570	Valve - Throttle	1
13	56-8560	Needle - Jet	1
14	56-8550	Retainer - Spring	1
15	56-8540	Clip - Needle	1
16	56-8530	Spring - Throttle	1
17	56-8520	Cap - Mixing Chamber	1
18	54-4900	Cap - Rubber	1
19	56-8640	Wire - Throttle	1
20	56-8410	Gasket - Insulator	1
21	56-8400	Insulator	1
22	56-8350	Screw	2
23	56-8390	Gasket - Carburetor	1

Ref. No.	Part No.	Description	No. Used
24	56-8580	Spring - Adjustment Screw	1
25	56-8590	Screw - Adjustment	1
26	56-8600	Needle - Main Jet	1
27	56-8370	Carburetor Assembly (Incl. Ref. #7-18, 24-26, & 28-36)	1
28	56-8610	Spring - Inlet Valve	1
29	56-8490	Arm - Float	1
30	56-8300	Pin - Float	1
31	56-8620	Gasket - Main Diaphragm	1
32	56-8630	Diaphragm - Main	1
33	56-8510	Cover - Diaphragm	1
34	54-5110	Screw	4
35	54-5080	Screw - Float	1
36	54-5050	Valve - Float	1
37	54-5170	Decal - Choke	1
38	56-8660	Spring	2
39	56-8670	Spring	1
40	56-8680	Cap	1
*	56-8650	Air Cleaner Assembly (Incl. Ref. #1, 3-5, 37-40)	1
*	77-1010	Carburetor Repair Kit	1

\*Not Illustrated

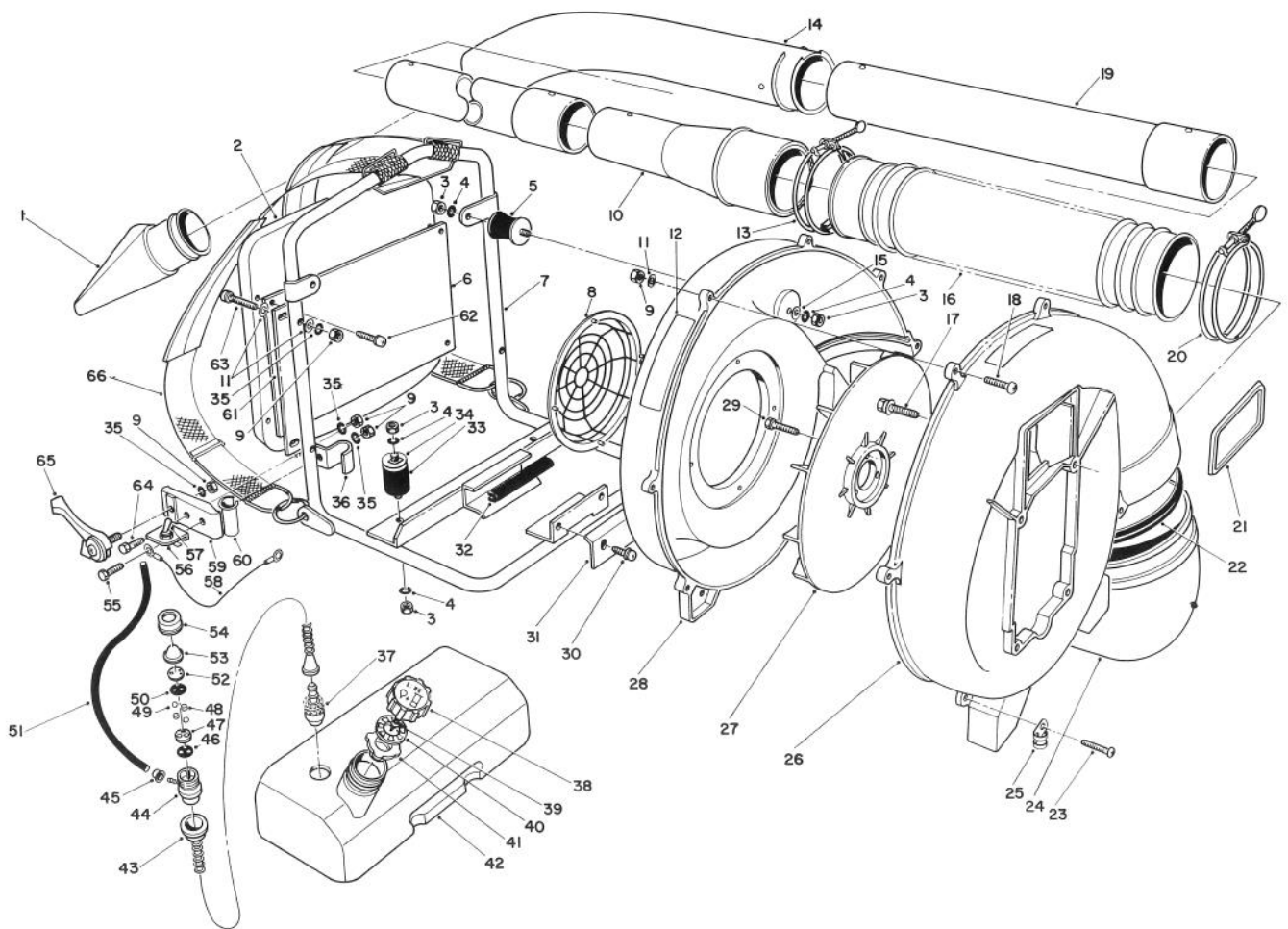


C-0489

## BLOWER ASSEMBLY

Ref. No.	Part No.	Description	No. Used
1	56-9080	Nozzle	1
2	56-9330	Pad	1
3	56-9120	Nut	8
4	56-9130	Washer - Lock	8
5	56-9360	Cushion - Rubber	2
6	56-9340	Plate	1
7	56-9420	Frame	1
8	56-9160	Cover - Fan	1
9	56-9090	Nut	15
10	56-9050	Hose	1
11	56-9430	Washer	16
12	82-5670	Decal - Warning	1
13	56-9040	Band - Wire	1
14	56-9070	Hose	1
15	56-9140	Washer	2
16	57-5640	Hose - Flexible	1
17	56-9210	Bolt	4
18	56-9150	Screw	7
19	56-9060	Hose	2
20	56-9020	Band - Wire	1
21	46-8290	Plate - Toro	1
22	56-9180	Ring - Dust Seal	1

Ref. No.	Part No.	Description	No. Used
23	56-9470	Screw	1
24	56-9190	Elbow	1
25	56-9220	Clamp	1
26	56-9100	Case - Fan	1
27	56-9200	Fan	1
28	56-9170	Case - Fan	1
29	56-9110	Bolt	3
30	56-9310	Bolt	2
31	56-9400	Stopper	1
32	56-9390	Cushion - Rubber	2
33	56-9380	Cushion - Rubber	2
34	56-9370	Holder - Cushion	2
35	56-9360	Washer - Lock	7
36	57-5690	Clamp - Stopper	1
37	57-5520	Filter - Fuel	1
38	54-5600	Cap - Fuel Tank	1
39	54-5610	Valve - Breather	1
40	54-5620	Holder	1
41	54-5630	Gasket	1
42	56-9010	Fuel Tank Assembly (Incl. Ref.#37-41, 43, 44, 46-50, &52-54)	1



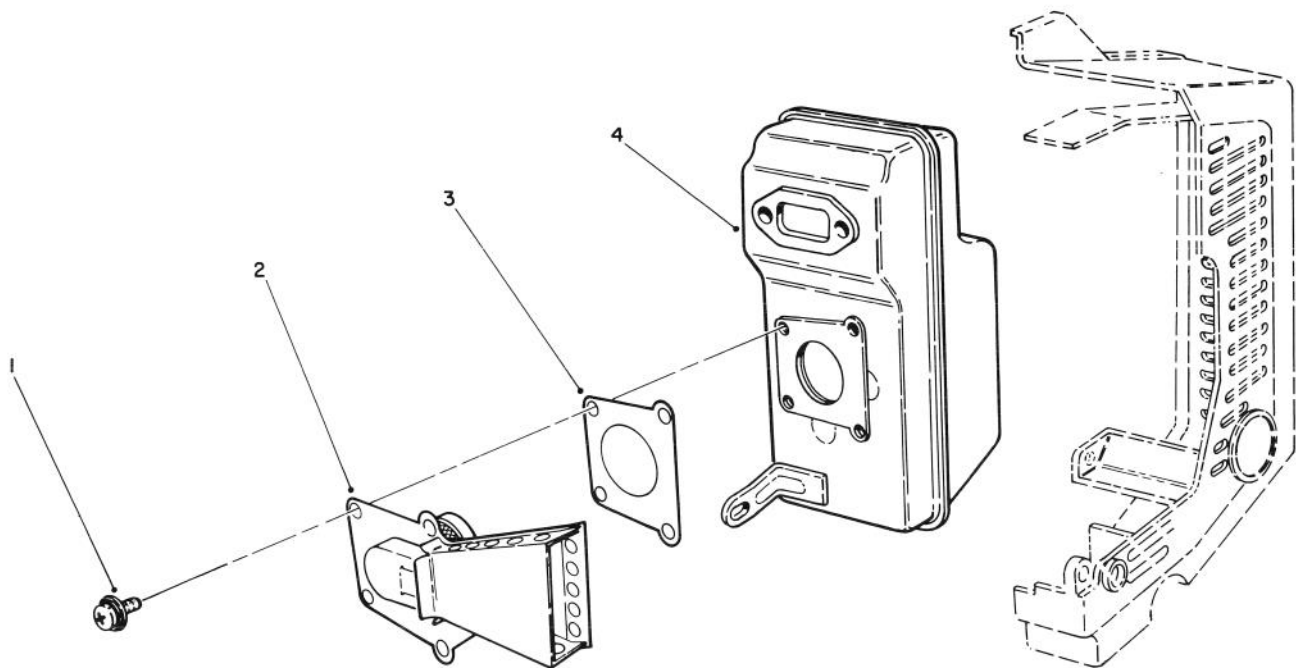
C-0489

## BLOWER ASSEMBLY

Ref. No.	Part No.	Description	No. Used
43	54-7050	Hose - Suction	1
44	54-5570	Primer - Pump	
		(Incl. Ref. #47-54)	1
45	54-5550	Clip	2
46	54-5500	Gasket	1
47	54-5490	Seat - Valve	1
48	54-5470	Sponge	2
49	54-5480	Ball	2
50	54-5460	Gasket	1
51	56-9000	Tube - Fuel	1
52	54-5530	Seat - Valve	1
53	54-5520	Cap	1
54	54-5510	Cap - Pump	1
55	56-9230	Bolt	1

Ref. No.	Part No.	Description	No. Used
56	56-9310	Bracket - Switch	1
57	56-9240	Switch - Stop	1
58	56-9290	Wire - Lead	1
59	57-5700	Bracket	1
60	57-5650	Bushing	1
61	56-9350	Plate	2
62	56-9450	Screw	4
63	56-9440	Screw	4
64	57-5530	Screw - Hex. Hd. Cap	1
65	56-9250	Lever - Throttle	1
66	56-9460	Harness - Shoulder	2
*	44-7400	Ear Plug Kit	1
*	54-5590	Gas Cap Assembly	
		(Incl. Ref. #38-41)	1

\*Not Illustrated



C-0490

## SPARK ARRESTER MUFFLER KIT NO. 61-4330 (Optional)

Ref. No.	Part No.	Description	No. Used
1	61-4380	Screw/ Washer	4
2	61-4370	Spark Arrester	1

Ref. No.	Part No.	Description	No. Used
3	61-4360	Gasket	1
4	61-4350	Muffler	1



# The Toro Promise

## A Two Year Limited Warranty On All Gasoline Powered Consumer Products

*The Toro Company promises to repair these TORO Products if defective in materials or workmanship. The following time periods from the date of purchase apply:*

Residential Product . . . . .	2 Years
Residential Products Used Commercially . . . . .	90 Days

*The costs of parts and labor are included, but the customer pays the transportation costs. Just return any residential product to an Authorized TORO Service Dealer or TORO Distributor.*

Should you feel your TORO is defective and wish to rely on The Toro Promise, the following procedure is recommended:

1. Contact any Authorized TORO Service Dealer, TORO Master Service Dealer, or TORO Distributor (the Yellow Pages of your telephone directory is a good reference source).
2. He will either instruct you to return the product to him or recommend another Authorized TORO Service outlet which might be more convenient.
3. Bring the product along with your original sales slip, or other evidence of purchase date, to the service dealer.
4. The servicing dealer will inspect the unit, advise you whether the product is defective and, if so, make all repairs necessary to correct the defect without extra charge to you.

If for any reason you are dissatisfied with the dealer's analysis of the defect or the service performed, you may contact us.

Write:

TORO Customer Service Department  
8111 Lyndale Avenue South  
Minneapolis, Minnesota 55420

The above remedy of product defects through repair by an Authorized TORO Service Dealer is the purchaser's sole remedy for any defect.

**THERE IS NO OTHER EXPRESS WARRANTY. ALL IMPLIED WARRANTIES OF MERCHANTABILITY AND FITNESS FOR USE ARE LIMITED TO THE DURATION OF THE EXPRESS WARRANTY.**

Some states do not allow limitations on how long implied warranty lasts, so the above limitation may not apply to you.

This Warranty applies only to parts or components which are defective and does not cover repairs necessary due to normal wear, misuse, accidents, or lack of proper maintenance. Regular, routine maintenance of the unit to keep it in proper operating condition is the responsibility of the owner.

All warranty repairs reimbursable under The Toro Promise must be performed by an Authorized TORO Service Dealer using Toro approved replacement parts.

Repairs or attempted repairs by anyone other than an Authorized TORO Service Account are not reimbursable under The Toro Promise. In addition, these unauthorized repair attempts may result in additional malfunctions, the correction of which is not covered by warranty.

**THE TORO COMPANY IS NOT LIABLE FOR INDIRECT, INCIDENTAL OR CONSEQUENTIAL DAMAGES IN CONNECTION WITH THE USE OF THE PRODUCT INCLUDING ANY COST OR EXPENSE OF PROVIDING SUBSTITUTE EQUIPMENT OR SERVICE DURING PERIODS OF MALFUNCTION OR NON-USE.**

Some states do not allow the exclusion of incidental or consequential damages, so the above exclusion may not apply to you.

This warranty gives you specific legal rights, and you may also have other rights which vary from state to state.

### COUNTRIES OTHER THAN THE UNITED STATES OR CANADA

Customers who have purchased TORO products exported from the United States or Canada should contact their TORO Distributor (Dealer) to obtain guarantee policies for your country, province or state. If for any reason

you are dissatisfied with your Distributor's service or have difficulty obtaining guarantee information, contact the TORO importer. If all other remedies fail, you may contact us at The Toro Company.

## MAINTENANCE RECORD

[illegible]