



**48in Vac-Bagger**  
**TimeCutter® Z Riding Mower Attachment**  
Model No. 79166—Serial No. 250000001 and Up

**Operator's Manual**

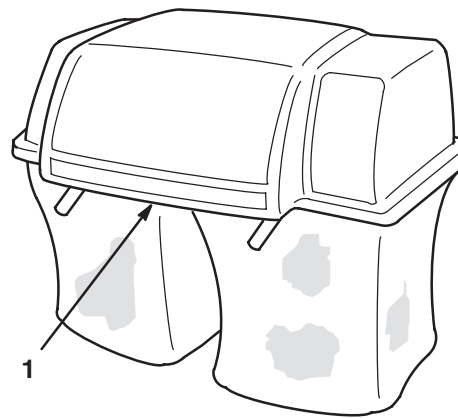
# Contents

	Page
Introduction .....	2
Safety .....	3
Safety and Instruction Decals .....	3
Installation .....	4
Loose Parts .....	4
Preparing the Mower .....	5
Installing the Blower Assembly .....	6
Assemble the Bagger .....	8
Preparing the Machine .....	9
Installing the Vac-Bagger onto the Machine ....	10
Removing the Bagger .....	11
Operation .....	15
Emptying the Grass Bags .....	15
Clearing Obstructions from the Bagger .....	16
Operating and Bagging Tips .....	16
Maintenance .....	17
Inspecting the Bagger Attachment .....	17
Inspecting the Mower Blades .....	17
Caring for the Grass Bags .....	17
Cleaning the Bagger Attachment .....	17
Storing the Bagger Attachment .....	17
The Toro Total Coverage Guarantee .....	20

## Introduction

Read this manual carefully to learn how to operate and maintain your product properly. The information in this manual can help you and others avoid injury and product damage. Although Toro designs and produces safe products, you are responsible for operating the product properly and safely.

Whenever you need service, genuine Toro parts, or additional information, contact an Authorized Service Dealer or Toro Customer Service and have the model and serial numbers of your product ready. Figure 1 illustrates the location of the model and serial numbers on the product.



1376

**Figure 1**

1. Location of the model and serial numbers

Write the product model and serial numbers in the space below:

**Model No.** \_\_\_\_\_

**Serial No.** \_\_\_\_\_

This manual identifies potential hazards and has special safety messages that help you and others avoid personal injury and even death. ***Danger, Warning, and Caution*** are signal words used to identify the level of hazard. However, regardless of the hazard, be extremely careful.

***Danger*** signals an extreme hazard that *will* cause serious injury or death if you do not follow the recommended precautions.

***Warning*** signals a hazard that *may* cause serious injury or death if you do not follow the recommended precautions.

***Caution*** signals a hazard that may cause minor or moderate injury if you do not follow the recommended precautions.

This manual uses two other words to highlight information. **Important** calls attention to special mechanical information and **Note:** emphasizes general information worthy of special attention.

# Safety

## Safety and Instruction Decals

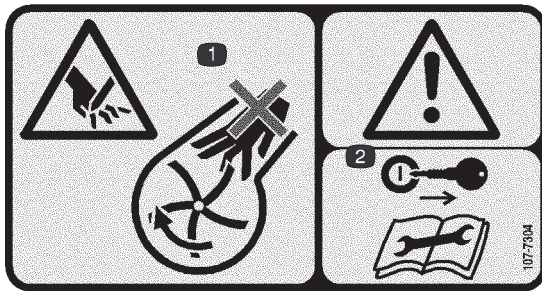


Safety decals and instructions are easily visible to the operator and are located near any area of potential danger. Replace any decal that is damaged or lost.



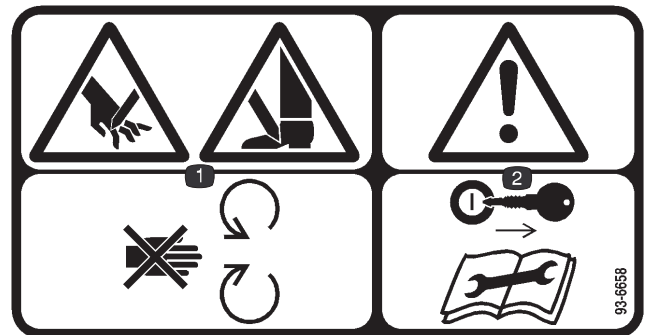
93-7320

1. Crushing hazard of hand—do not remove the whole bagger from the machine; open the bagger top and then remove the bag(s) from the bagger. Do not remove the bagger top when it is closed; open the bagger top and then remove it.



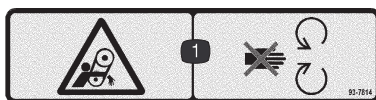
Molded into the blower housing

1. Cutting hazard of hand—do not place your hand into the impeller housing.
2. Warning—remove the ignition key and read the instructions before servicing or performing maintenance.



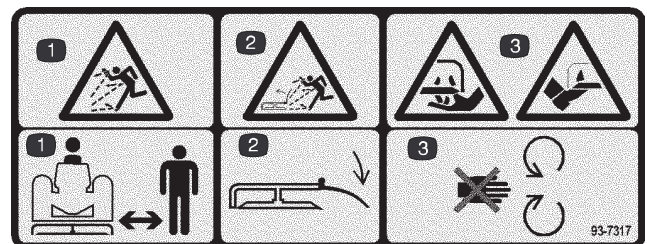
Molded into the blower belt cover

1. Cutting hazard of hand or foot—stay away from moving parts.
2. Warning—remove the ignition key and read the instructions before servicing or performing maintenance.



Molded into the blower belt cover

1. Entanglement hazard, belt—stay away from moving parts.



93-7317

1. Thrown object hazard—stay a safe distance from the machine.
2. Thrown object hazard, mower—keep the deflector in place.
3. Cutting/dismemberment of hand or foot—stay away from moving parts.



93-1122

# Installation

**Note:** Determine the left and right sides of the machine from the normal operating position.

**Note:** The installation of this attachment requires the information found in the *Operator's Manual*; you should have the manual at hand to reference during the installation.

## Loose Parts

**Note:** Use the chart below to identify parts used for assembly.

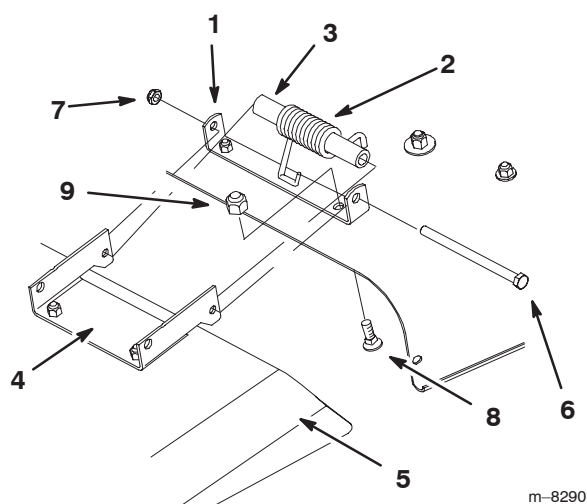
Description	Qty.	Use
Baffle, 48 inch	1	Installing the grass baffle
Carriage bolt, 5/16 x 7/8 inch	2	
Washer, 5/16 inch	1	
Locknut, 5/16 inch	2	
Pivot support	1	Installing the blower pivot support
Bolt, 5/16 x 3/4 inch	1	
Locknut, 5/16 inch	1	
Jam nut, 3/4 inch	1	
Washer, 5/16 inch	1	
Pulley	1	Install the blower assembly
Belt	1	
Belt cover bracket	1	
Screw 1/4-20 x 3/8 inch	3	
Blower assembly	1	
Blower belt cover	1	
Screw 1/4-20 x 1/2 inch	2	
Blower belt cover	1	
Bolt 1/4-20 x 5/8 inch	2	
Locknut 1/4 inch	2	
Leveling brackets	2	
Locknut, 1/4 inch	2	Assembling the bagger
Bolt, 1/4 x 3/4 inch	2	
Weight	1	Installing the weight
Bolt, 3/8 x 2-1/4 inch	2	
Washer, 3/8 inch	4	
locknuts, 3/8 inch	2	
Bagger support assembly	1	Installing the bagger support assembly
Bolt, 3/8 x 1 inch	4	
Washer, 3/8 inch	4	
Locknut, 3/8 inch	4	

Description	Qty.	Use
Discharge tube	1	Installing the bagger assembly
Grass bags	2	
Bagger top assembly	1	
Registration card	1	Fill out and return to Toro.
Operator's manual	1	Read before operating the machine and vac-bagger.

## Preparing the Mower

### Remove the Discharge Chute

1. Remove the bolt and nut securing the discharge chute to the mower deck (Fig. 2). Remove the discharge chute and spring assembly. Retain all parts for future installation.



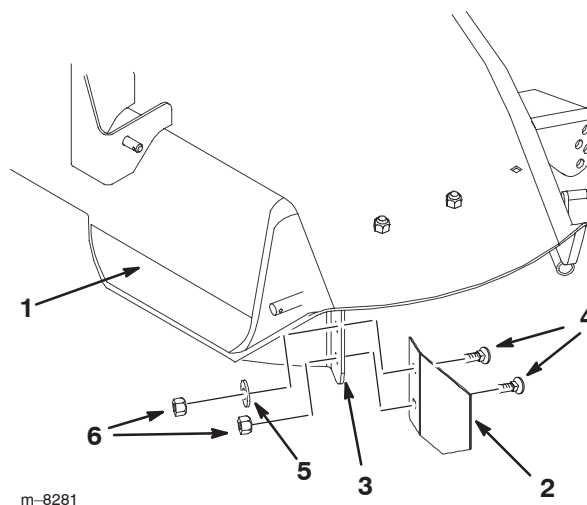
**Figure 2**

- |                                   |                                   |
|-----------------------------------|-----------------------------------|
| 1. Mount bracket, discharge chute | 6. Bolt                           |
| 2. Spring, hooked ends down       | 7. Locknut                        |
| 3. Spacer                         | 8. Carriage bolt, 5/16 x 5/8 inch |
| 4. Discharge chute, bracket       | 9. Locknut, 5/16 inch             |
| 5. Discharge chute                |                                   |

2. Remove the two carriage bolts and locknuts securing the mounting bracket to the mower (Fig. 2). Remove the mounting bracket.
3. Install the two carriage bolts and locknuts into the open mower deck holes. Retain all parts for future installation.

### Installing the Grass Baffle

Install the 48 inch grass baffle to the existing grass baffle with two carriage bolts (5/16 x 3/4 inch), two washers (5/16 inch) and two locknuts (5/16 inch) as shown in Figure 3. Use the washer in the larger, upper hole when installing the 48 inch baffles to the existing baffle.



**Figure 3**

- |                           |                                   |
|---------------------------|-----------------------------------|
| 1. Mower deck             | 4. Carriage bolt, 5/16 x 3/4 inch |
| 2. 48 inch baffle         | 5. Washer, 5/16 inch              |
| 3. Grass baffle, existing | 6. Locknut, 5/16 inch             |

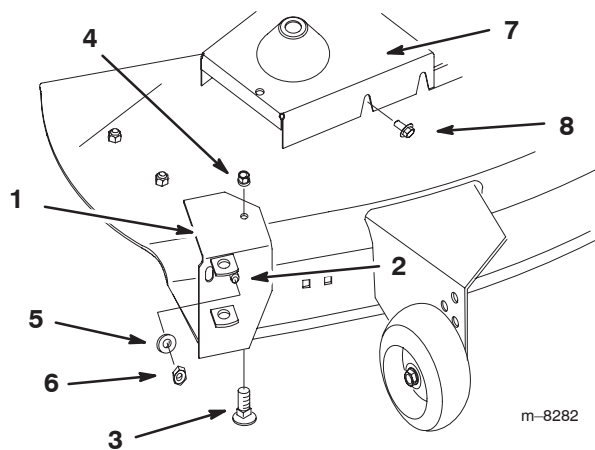
## Installing the Blower Pivot Support

1. Slide the pivot support over the threaded stud welded to the front of the mower near the discharge opening. Use the inside slot on the pivot support so that the pivot support is closest to the discharge opening (Fig. 4).

**Note:** If necessary, remove any hardware in the mower deck interfering with the pivot support. Retain all hardware.

2. Align the pivot support parallel with the front curved edge of the mower deck and tight up against the top of the mower. (Fig. 4).
3. Secure the pivot support to the mower with a 5/16 x 3/4 inch bolt and a 5/16 inch flange nut (Fig. 4).
4. Place a 3/8 inch jam nut and 3/8 inch washer snug onto the stud. Do not overtighten the jam nut (Fig. 4).
5. Remove the mower belt cover from the right side pulley (Fig. 4).

**Note:** Save all parts and hardware for use when removing the blower.



**Figure 4**

- |                          |                      |
|--------------------------|----------------------|
| 1. Pivot support         | 5. Washer, 3/8 inch  |
| 2. Threaded stud         | 6. Jam nut, 3/8 inch |
| 3. Bolt, 5/16 x 3/4 inch | 7. Mower belt cover  |
| 4. Flange nut, 5/16 inch | 8. Fastener          |

## Installing the Blower Assembly

### Installing the Blower Pulley

1. Pull on the mower idler assembly to release belt tension and remove the blade drive belt from the right side pulley; refer to the machine *Operator's Manual* for instructions.

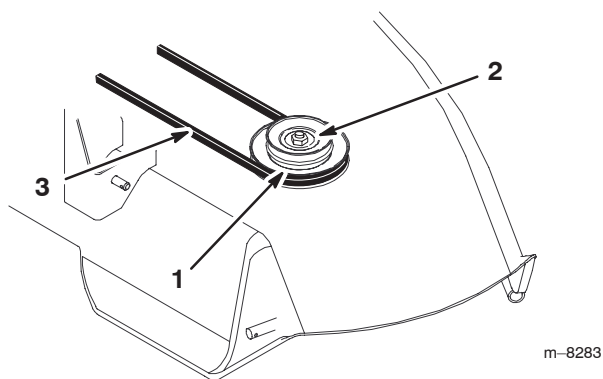
**Note:** Block the blade with a piece of wood to stop it from turning while you remove the pulley nut. If the blade slips, hold the hex portion of the spindle with a wrench.

2. Remove the nut and lock washer from the right-hand blade spindle. Remove the single pulley.

**Note:** When the nut is removed the shaft is free to drop out of the spindle. Be sure to support the spindle and blade from the bottom side.

3. Slide the new double pulley onto the spindle shaft with the small pulley, facing up. Secure it with the previously removed 5/8 inch lock washer and nut (Fig. 5).
4. Tighten the nut to 50–75 ft. lb. (68–101 Nm).
5. Install the existing mower belt onto the bottom pulley (Fig. 5).
6. Pull on the mower idler assembly and install the existing mower belt by rotating it onto the idler pulley.

**Note:** Check that mower belt is properly located on the idler and pulleys.

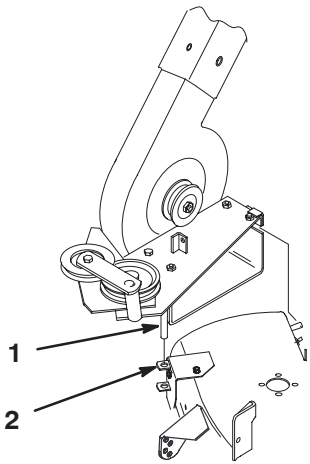


**Figure 5**

- |  |               |
|--|---------------|
| 1. New double pulley, small pulley on top. | 3. Mower belt |
| 2. Lock washer and nut, 5/8 inch           |               |

## Installing the Blower

1. Install the mower to the machine; refer to *Operator's Manual*.
2. Install the blower by lowering the pivot pin into the pivot support (Fig. 6).

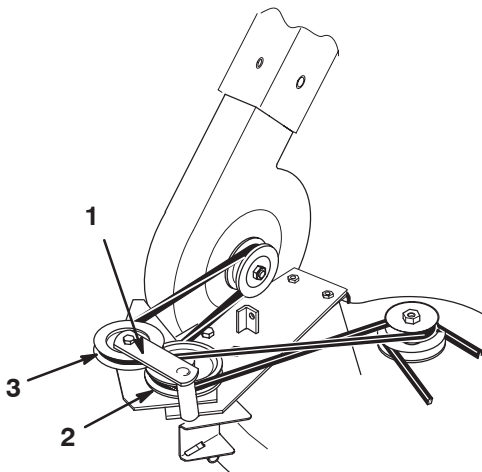


**Figure 6**

1. Pivot pin
2. Pivot support

m-8284

3. Open the latch and swing the blower out away from the mower, install the blower belt around the idler and blower pulleys as shown (Fig. 7). Install the other end of the belt over the blower drive pulley on the mower spindle.



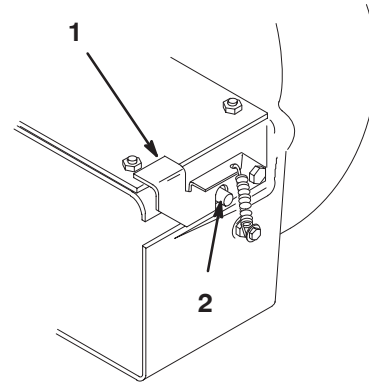
**Figure 7**

1. Idler pulley bracket and pulley
2. Top (wide) side of belt against bottom pulley
3. "V" side of belt into top pulley groove

m-8285

4. With the belt installed, swing the blower toward the mower until the blower latch locks over the pin at the back of the mower (Fig. 8).

**Important** You may have to lift the blower slightly for the latch to close. Ensure that the latch operates *smoothly* and closes *completely*.



1840

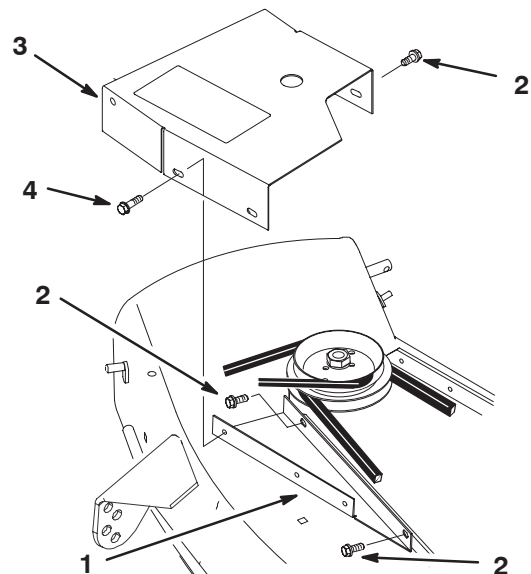
**Figure 8**

1. Blower latch
2. Pin

## Installing the Belt Covers

1. Attach the belt cover bracket to the mower deck with two 1/4 x 3/8 inch screws (Fig. 9).
2. Attach the front of the mower belt cover loosely to the belt cover bracket with two 1/4 x 1/2 inch screws. Attach the back of the mower belt cover loosely to the mower deck with a 1/4 x 3/8 inch screw (Fig. 9).

**Note:** Do not tighten the screws as adjustment must be made later.

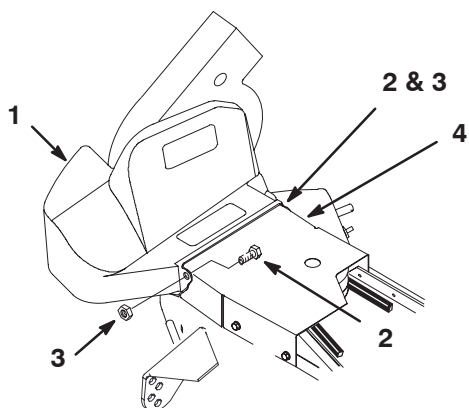


m-8286

**Figure 9**

1. Belt cover bracket
2. Screw, 1/4 x 3/8 inch
3. Mower belt cover
4. Screw, 1/4 x 1/2 inch

3. Mount the blower belt cover using two 1/4 x 5/8 inch bolts and two 1/4 inch locknuts (Fig. 10). Tighten the locknuts slightly so light drag is felt on the belt cover when it is tilted upward. The cover must close freely when assembled.
4. Adjust the mower belt cover by sliding it so the blower belt cover just touches the blower, but still opens freely. Tighten the mower belt cover mounting screws.



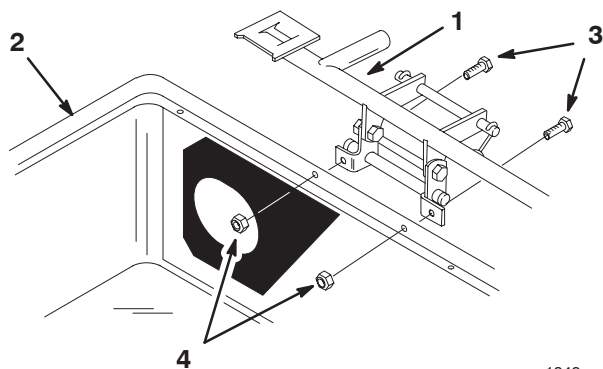
m-8287

**Figure 10**

- |                         |                      |
|-------------------------|----------------------|
| 1. Blower belt cover    | 3. Locknut, 1/4 inch |
| 2. Bolt, 1/4 x 5/8 inch | 4. Mower belt cover  |

## Assemble the Bagger

If necessary, install the bagger frame to the cover. Attach the frame assembly to the bagger cover with two bolts (1/4 x 3/4 inch) and two locknuts (1/4 inch) (Fig. 12).



1849

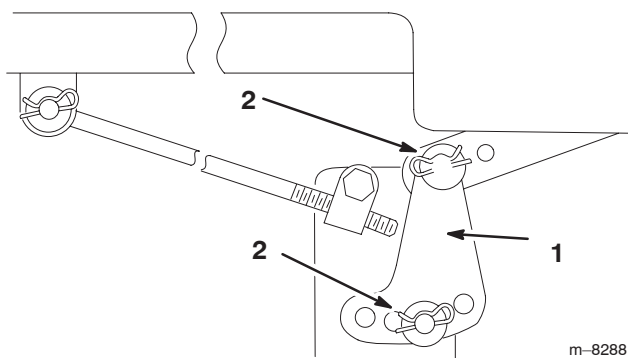
**Figure 12**

- |                   |                         |
|-------------------|-------------------------|
| 1. Frame assembly | 3. Bolt, 1/4 x 3/4 inch |
| 2. Bagger cover   | 4. Locknut, 1/4 inch    |

## Installing the Leveling Brackets

1. Replace the two left side mower leveling brackets (slotted) with two new leveling brackets (hole). Secure them with the existing washers and hairpin cotter (Fig. 11).

**Note:** Save the slotted leveling bracket for future side discharge operation.



m-8288

**Figure 11**

- |                          |                              |
|--------------------------|------------------------------|
| 1. Hole leveling bracket | 2. Washer and hairpin cotter |
|--------------------------|------------------------------|

2. Check the mower level front-to-rear and side-to-side; refer to the *Operator's Manual* for instructions.



# Preparing the Machine

## Installing the Weight



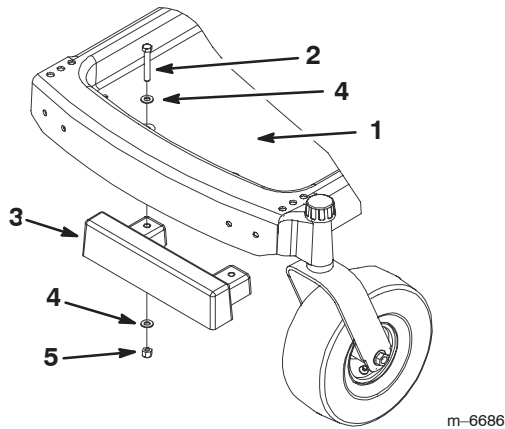
### Caution



The bagger adds a lot of weight to the rear of the machine and may cause an unstable condition which could result in a loss of control.

- Install the front weight.

Attach the weight to the front of the machine with two bolts (3/8 x 2-1/4 inch), four washers (3/8 inch), and two locknuts (3/8 inch) as shown in Figure 13.

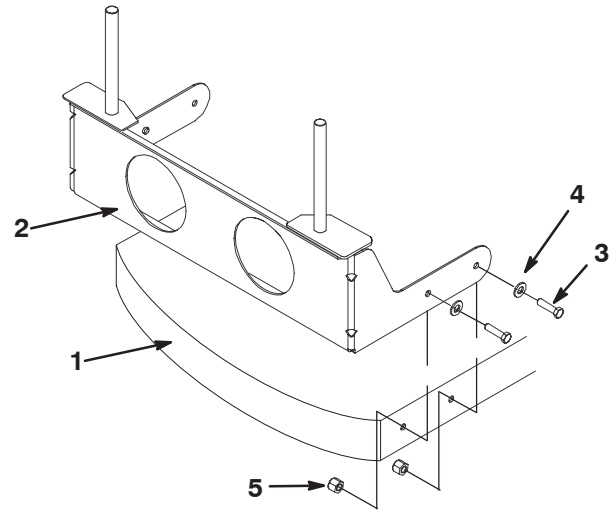


**Figure 13**

- |                           |                     |
|---------------------------|---------------------|
| 1. Footrest frame         | 4. Washer, 3/8 inch |
| 2. Bolt, 3/8 x 2-1/4 inch | 5. Nut, 3/8 inch    |
| 3. Front weight           |                     |

## Installing the Bagger Support Assembly

Attach the bagger support assembly to the machine frame with four bolts (3/8 x 1 inch), four washers (3/8 inch), and four locknuts (3/8 inch) as shown in Figure 14.



m-6686

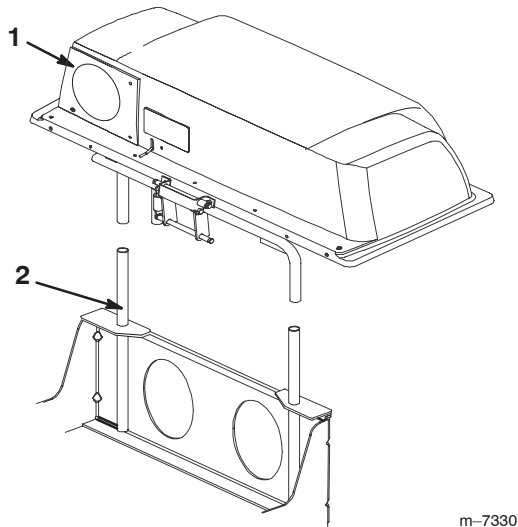
**Figure 14**

- |                          |                      |
|--------------------------|----------------------|
| 1. machine frame         | 4. Washer, 3/8 inch  |
| 2. Support               | 5. Locknut, 3/8 inch |
| 3. Bolt, 3/8-16 x 1 inch |                      |

# Installing the Vac-Bagger onto the Machine

## Installing the Bagger Assembly

1. Carefully lift the bagger top assembly and slide it onto the bagger support assembly (Fig. 15). The bagger top assembly is easier to install if two people work together.



**Figure 15**

1. bagger top assembly
2. Support assembly



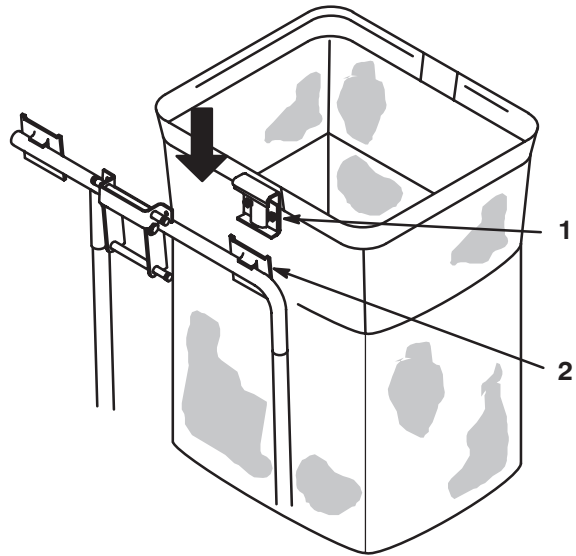
### Caution



If you remove the spring-loaded bagger top when it is closed (in the down position), the top may suddenly fly open and you or someone else may be bruised, pinched, or injured in another way.

Always open (raise) the bagger top before you remove or install it on the quick-attach bracket.

2. Install the bags by sliding the bag frame hooks onto the retaining brackets (Fig. 16).

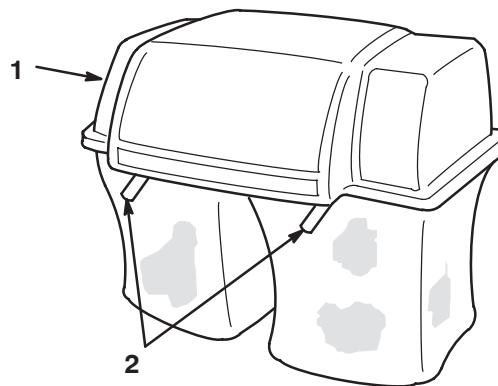


1373

**Figure 16**

1. Bag frame hook
2. Retaining bracket

3. Lower the cover onto the bags. Then push down on both bag retainer handles until they lock on the bag frame (Fig. 17).



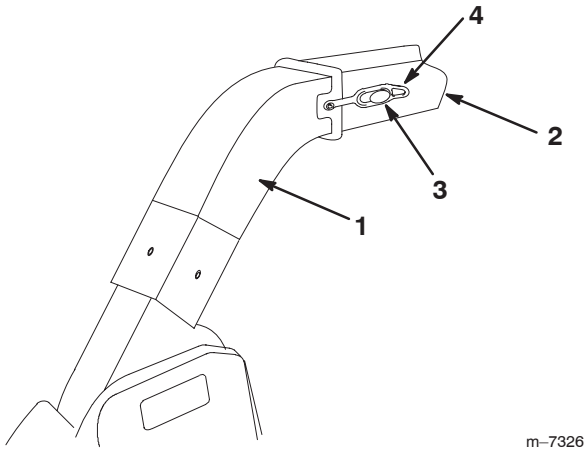
1376

**Figure 17**

1. Bagger top
2. Bag retainer handles

## Mounting the Discharge Tube

1. Insert the upper end of the discharge tube into the bagger top. Slide the lower end of the discharge tube into the blower discharge extension opening (Fig. 18).
2. Hook the rubber latch onto the knob (Fig. 18).

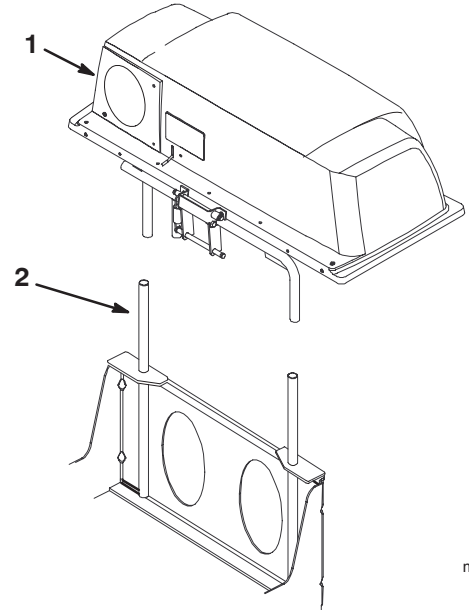


m-7326

**Figure 18**

- |                               |                 |
|-------------------------------|-----------------|
| 1. Blower discharge extension | 3. Rubber latch |
| 2. Discharge tube             | 4. Knob         |

2. Carefully lift the bagger top and slide off the quick-attach bracket (Fig. 20). The bagger top assembly is easier to remove if two people work together.



m-7330

**Figure 20**

- |                        |                         |
|------------------------|-------------------------|
| 1. bagger top assembly | 2. Quick-attach bracket |
|------------------------|-------------------------|

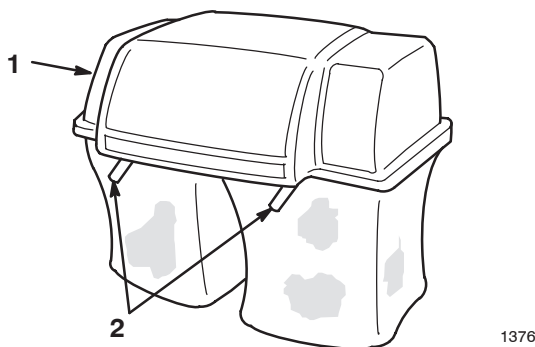
## Removing the Bagger

### Removing the Discharge Tube

1. Unhook the rubber latch onto the knob (Fig. 18).
2. Slide the lower end of the discharge tube out of the blower discharge extension opening (Fig. 18). Pull the upper end of the discharge tube out of the bagger top.

### Removing the Bagger

1. Raise the cover and remove the grass bags from the bag frame (Fig. 19).



1376

**Figure 19**

- |               |                         |
|---------------|-------------------------|
| 1. Bagger top | 2. Bag retainer handles |
|---------------|-------------------------|



### Caution

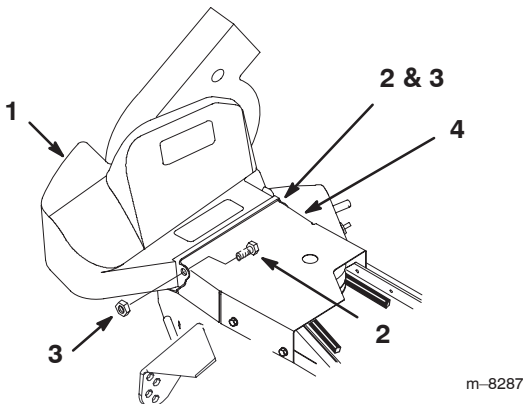


**If you remove the spring-loaded bagger top when it is closed (in the down position), the top may suddenly fly open and you or someone else may be bruised, pinched, or injured in another way.**

**Always open (raise) the bagger top before you remove or install it on the quick-attach bracket.**

## Removing the Belt Covers

1. Remove the blower belt cover by removing two 1/4 inch locknuts and 1/4 x 5/8 inch bolts (Fig. 21).

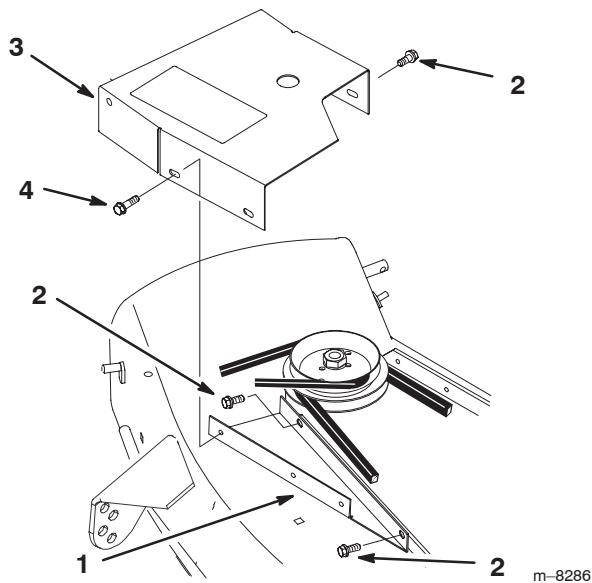


**Figure 21**

- |                         |                      |
|-------------------------|----------------------|
| 1. Blower belt cover    | 3. Locknut, 1/4 inch |
| 2. Bolt, 1/4 x 5/8 inch | 4. Mower belt cover  |

2. Remove the mower belt cover and belt cover bracket from the right side pulley (Fig. 22).

**Note:** Save all parts and hardware for use when installing blower.

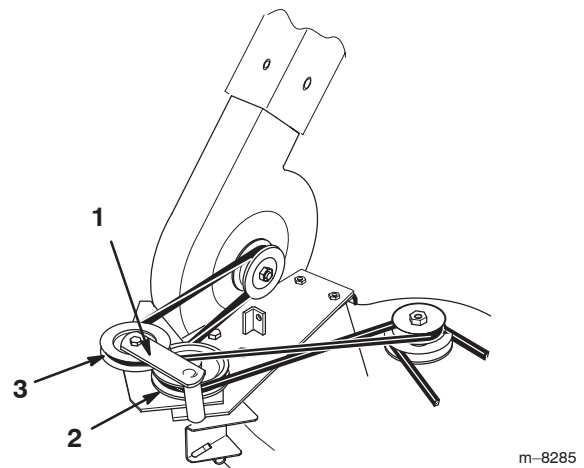


**Figure 22**

- |                          |                          |
|--------------------------|--------------------------|
| 1. Belt cover bracket    | 3. Mower belt cover      |
| 2. Screw, 1/4 x 3/8 inch | 4. Screw, 1/4 x 1/2 inch |

## Removing the Blower from the Mower

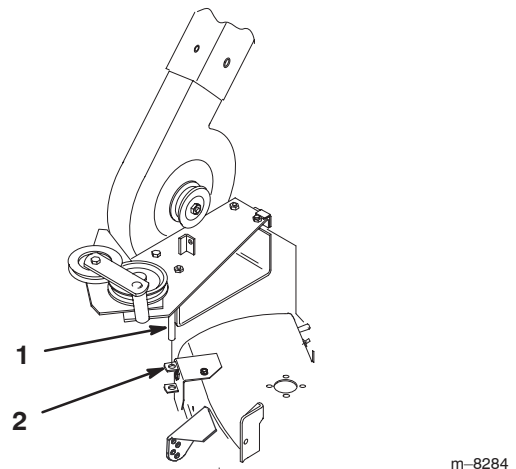
1. Open the latch and swing the blower out away from the mower, remove the blower belt from the mower pulley (Fig. 23).



**Figure 23**

- |  |  |
|--|--|
| 1. Idler pulley bracket and pulley               | 3. "V" side of belt into top pulley groove |
| 2. Top (wide) side of belt against bottom pulley |  |

2. Remove the blower by lifting the pivot pin out of the pivot support (Fig. 24).



**Figure 24**

- |              |                  |
|--------------|------------------|
| 1. Pivot pin | 2. Pivot support |
|--------------|------------------|

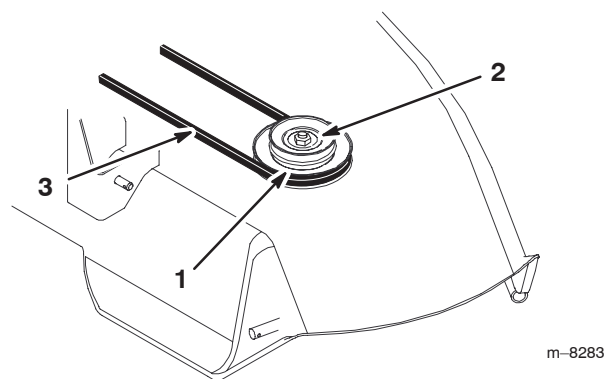
## Removing the Blower Pulley from the Mower

1. Pull on mower idler assembly to release belt tension and remove blade drive belt from right side pulley (Fig. 25).

**Note:** Block blade with a piece of wood to stop it from turning while you remove the pulley nut. If blade slips hold hex portion of spindle with a wrench.

2. Remove nut and lock washer from right hand blade spindle (Fig. 25). Remove double pulley.

**Note:** When nut is removed the shaft is free to drop out of the spindle. Be sure to support the spindle and blade from the bottom side.



**Figure 25**

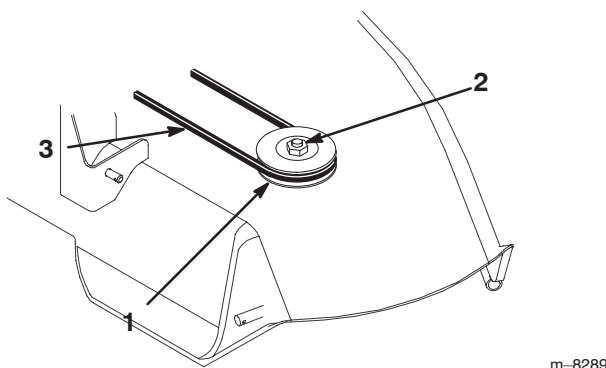
1. Double pulley
2. Lock washer and nut
3. Blade drive belt

3. Slide the single pulley onto the spindle shaft. Secure with previously removed lock washer and nut (Fig. 26).

4. Tighten the nut to 50–75 ft. lb. (68–101 Nm).

5. Install the existing mower belt by rotating it onto the pulley (Fig. 26).

**Note:** Check that mower belt is properly located on idler and pulleys.



**Figure 26**

1. Single groove pulley
2. Lock washer and nut
3. Blade drive belt

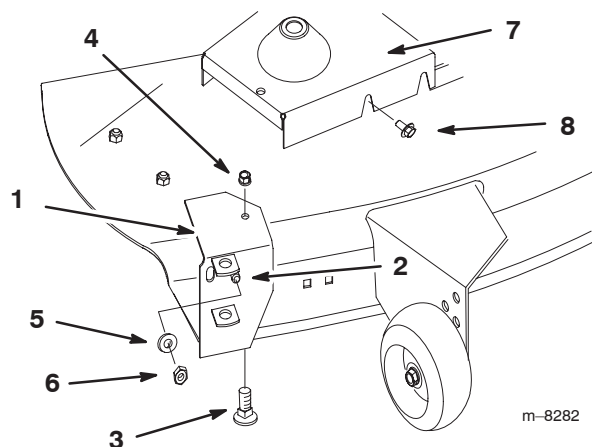
## Removing the Blower Pivot Support

1. Remove the pivot support and pivot bracket from the mower (Fig. 27).

**Note:** Save all parts and hardware for use when installing blower.

2. Install the previously removed hardware in the open hole of the mower for safety (Fig. 27).

3. Install the mower belt cover using existing hardware (Fig. 27).



**Figure 27**

1. Pivot support
2. Threaded stud
3. Bolt, 5/16 x 3/4 inch
4. Flange nut, 5/16 inch
5. Washer, 3/8 inch
6. Jam nut, 3/8 inch
7. Mower belt cover
8. Fastener



### Caution

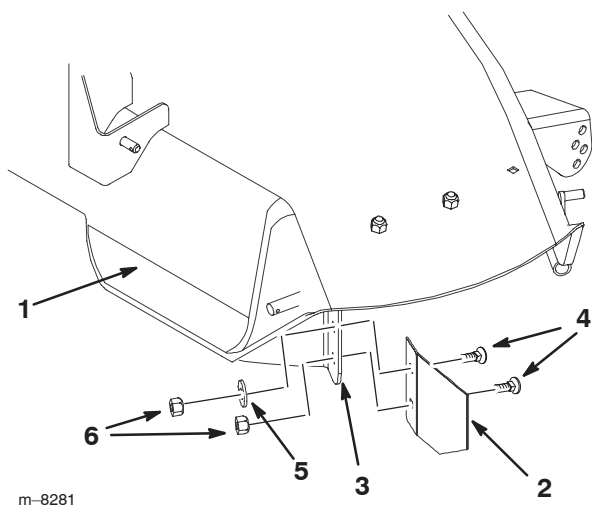


Open holes in the mower expose you and others to thrown debris which could cause injury.

Never operate the mower without hardware mounted in all holes in the mower.

## Removing the Grass Baffle

Remove the two carriage bolts (5/16 x 3/4 inch), one washer (5/16 inch) and two locknuts (5/16 inch) as shown in Figure 28 securing the 48 inch grass baffle from the existing grass baffle. Remove the 48 inch grass baffle.

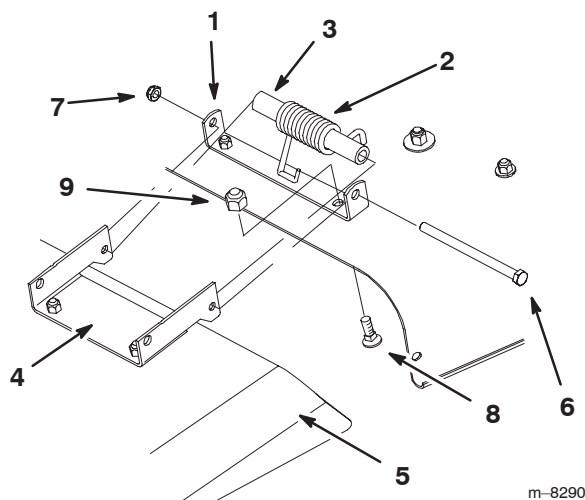


**Figure 28**

- |                           |                                   |
|---------------------------|-----------------------------------|
| 1. Mower deck             | 4. Carriage bolt, 5/16 x 3/4 inch |
| 2. 48 inch baffle         | 5. Washer, 5/16 inch              |
| 3. Grass baffle, existing | 6. Locknut, 5/16 inch             |

## Installing the Discharge Chute

1. Install the mounting bracket onto the mower with carriage bolts (5/16 x 5/8 inch) and locknuts (5/16 inch) as shown in Figure 29.
2. Install the discharge chute onto the mower (Fig. 29), in between the mounting brackets.



**Figure 29**

- |                                   |                                   |
|-----------------------------------|-----------------------------------|
| 1. Mount bracket, discharge chute | 6. Bolt                           |
| 2. Spring, hooked ends down       | 7. Locknut                        |
| 3. Spacer                         | 8. Carriage bolt, 5/16 x 5/8 inch |
| 4. Discharge chute, bracket       | 9. Locknut, 5/16 inch             |
| 5. Discharge chute                |                                   |

3. Align the discharge chute with the holes in the brackets and the spring and spacer in the space between the brackets and above the deflector (Fig. 29).
4. Place the spring and spacer so that the hooked ends of the spring are pointing down, with one end contacting on the mower deck and the other over the deflector (Fig. 29).
5. Secure the deflector to the mower bracket with the bolt. The bolt should pass through the grass deflector, spring, spacer, and brackets. Secure the assembly with the locknut (Fig. 29).

**Note:** It may be helpful to press down near the end of the bolt with a 9/16 inch open end wrench to align the bolt with the second hole on the mower bracket and grass deflector.

6. Lift the discharge chute and check that it is spring loaded and pivots freely to the full down position.

**Important** The discharge chute must be spring loaded in the down position. Lift the deflector up to test that it snaps to the full down position.



## Warning



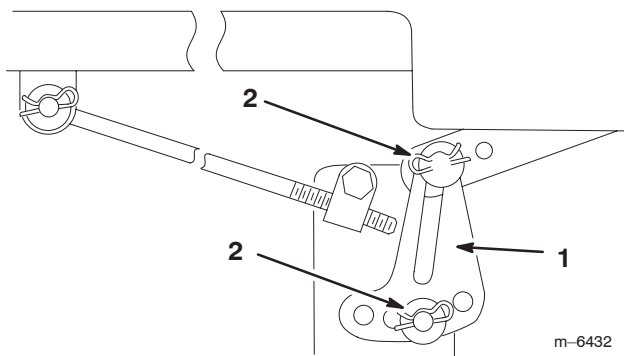
**Without the grass deflector, discharge cover, or complete grass catcher assembly mounted in place, you and others are exposed to blade contact and thrown debris. Contact with the rotating mower blade(s) and thrown debris will cause injury or death.**

- Never remove the grass deflector from the mower because the grass deflector routes material down toward the turf. If the grass deflector is ever damaged, replace it immediately.
- Never put your hands or feet under the mower.
- Never try to clear the discharge area or mower blades unless you move the power take off (PTO) to Off and rotate the ignition key to Off. Also remove the key and pull the wire off of the spark plug(s).

## Mounting the Mower onto the Machine

1. Install the mower onto the machine; refer to *Operator's Manual* for instructions.
2. Replace the two left side mower leveling brackets (hole) with two slotted leveling brackets (Fig. 30). Secure them with the existing washers and hairpin cotters (Fig. 30).

**Note:** Save the (hole) leveling bracket for use when the blower is installed.



**Figure 30**

1. Slotted leveling bracket      2. Washer and hairpin cotter

3. Check the mower level front-to-rear and side-to-side; refer to the *Operator's Manual* for instructions.

## Operation

**Note:** Determine the left and right sides of the machine from the normal operating position.



### Warning



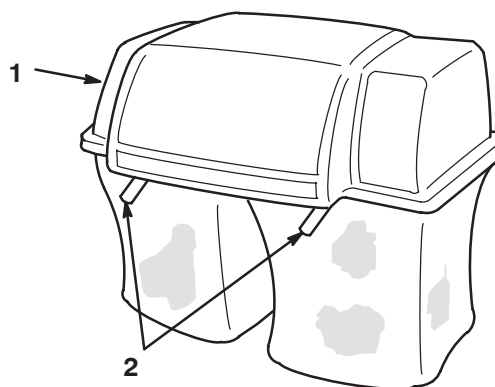
To avoid personal injury, follow these procedures:

- Become familiar with all operating and safety instructions in the operator's manual for your machine and mower before using this attachment.
- Never remove the discharge tube, bags, bagger top, or the blower while the engine is running.
- Always shut the engine off and wait for all moving parts to stop before clearing an obstruction from the vac bagging system.
- Never do maintenance or repairs while the engine is running.

## Emptying the Grass Bags

Be careful when lifting or handling a grass bag that is full. To empty the grass bags:

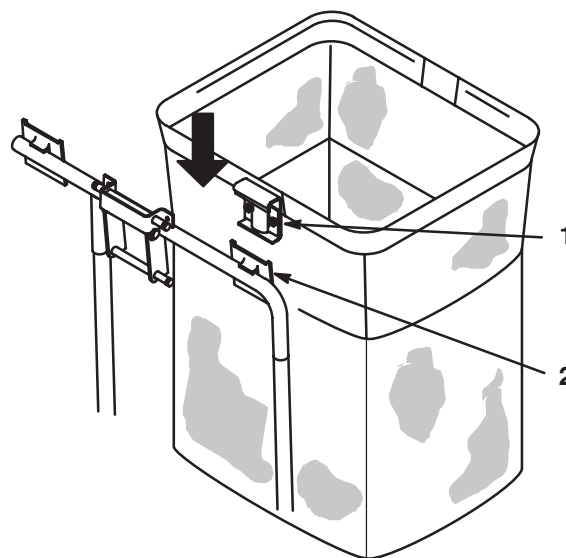
1. Stop the machine, set the parking brake, and disengage the power take off (PTO). Stop the engine and remove the ignition key.
2. Pull up on both bag retainer handles until they unlock from the bag frame (Fig. 31). Open (raise) the bagger top.



**Figure 31**

1. Bagger top      2. Bag retainer handles

3. Compress debris into the bags. With both hands, lift up on the bag and unhook it from the retaining bracket (Fig. 32). Empty the bag. Repeat the procedure for the other bag.



**Figure 32**

1. Bag frame hook      2. Retaining bracket

4. Install the bags by sliding the bag frame hooks onto the retaining brackets (Fig. 32).
5. Lower the bagger top onto the bags. Then push down on both bag retainer handles until they lock on the bag frame (Fig. 31).



## Clearing Obstructions from the Bagger

1. Stop the machine, move the control levers to neutral locked position, disengage the PTO, stop the engine, and remove the ignition key. Wait for all moving parts to stop.
2. Check the grass bags and empty them if they are full.
3. Remove and separate the discharge tube and blower from the bagger top and mower. Using a stick or similar object, carefully remove and clear the obstruction from the mower, discharge tube, blower, and the bagger top.
4. After you remove the obstruction, install the complete bagger system and resume operation.

## Operating and Bagging Tips

### Size

Remember that the machine is longer and wider with this attachment installed. By turning too sharply in confined places you may damage the attachment.

### Trimming

Always trim with the left side of the mower. Do not trim with the right side of the mower because you could damage the bagger's blower and discharge tube.

### Cutting Height

Do not set the mower cutting height too low because long grass surrounding the mower can prevent air from getting under the mower and entering the bagging system. If enough air doesn't get under the mower, the bagging system will plug.

### Cutting Frequency

Cut the grass often, especially when it grows rapidly. You will have to cut your grass twice if it gets excessively long (refer to Bagging Long Grass, page 16).

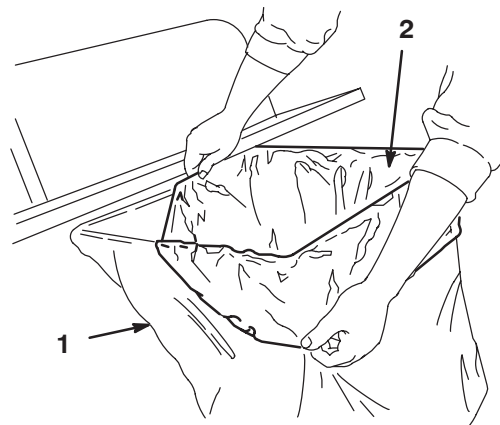
### Cutting Technique

For best lawn appearance, be sure to slightly overlap the mower into the previously cut area. This helps reduce the load on the engine and reduces the chance of plugging the blower and discharge tube.

### Using Bag Liners

Although not required, bags may be inserted into each cloth grass bag as a liner to collect clippings and make disposal more convenient (Fig. 33). If you use a bag liner,

remove the filled grass bag and close the top of the liner. Then pull the liner out the grass bag or turn the bag upside down while holding the handle on the bottom of the grass bag, allowing the liner to slide out.



1378

Figure 33

1. Cloth grass bag

2. Bag (liner)

## Bagging Speed

Most often you will bag with the throttle in the Fast position and drive at a normal ground speed. However, in extremely dry and dusty grass, you may want to slightly reduce the throttle speed and increase the ground speed of the machine. The bagging system may plug if you drive too fast and the engine speed gets too slow. On hills it may be necessary to slow the machine ground speed. This helps maintain the engine speed and bagging efficiency. Mow downhill whenever possible.



### Warning



**As the grass bags fill, extra weight is added to the back of the machine. If you stop and start suddenly on hills, you may lose steering control or the machine may tip.**

- **Do not start or stop suddenly when going uphill or downhill. Avoid uphill starts.**
- **If you do stop the machine when going uphill, disengage the PTO. Then proceed slowly off the slope.**
- **Do not change speeds or stop on slopes.**

## Bagging Long Grass

Excessively long grass is heavy and may not be propelled completely into the grass bags. If this happens, the discharge tube and blower may plug. To avoid plugging the bagging system, mow the grass at a high height of cut, then lower the mower to your normal cutting height and repeat the bagging process.



## Bagging Wet Grass

Do not mow on slopes when grass is wet. Always try to cut grass when it is dry because your lawn will have a neat appearance. Wet grass on level surfaces can be mowed using the conventional side discharge feature of the mower. Several hours later, when the clippings are dry, install the complete bagger attachment and vacuum up the grass clippings.

## Signs of Plugging

As you are bagging, a small amount of grass clippings normally blow out the front of the mower. An excessive amount of clippings blowing out indicates that the bags are full or the system is plugged.

# Maintenance



## Warning



**Debris built up in the engine compartment, if not removed, could be ignited by a hot engine. A fire in the engine compartment could burn you and others and can damage property.**

- **Before using and while the engine is cool, check for debris in the engine compartment.**
- **Keep the machine free of grass, leaves, or other debris build-up.**
- **Clean up oil or fuel spillage and fuel soaked debris.**
- **Allow the machine to cool before storing.**

**Note:** Determine the left and right sides of the machine from the normal operating position.

## Inspecting the Bagger Attachment

Inspect the bagger attachment after the first 10 hours of operation, and monthly thereafter.

1. Check the blower, discharge tube, and the bagger top. Replace these parts if they are cracked or broken.
2. Tighten all nuts, bolts, and screws.
3. Inspect the grass bags for deterioration.



## Warning



**You or bystanders could be severely injured by flying debris or thrown objects that may pass through torn, worn, or deteriorated grass bags.**

- **Frequently check the grass bags for holes, rips, wear, and other deterioration.**
- **Do not wash the grass bags.**
- **If the bag has deteriorated, install new grass bags supplied by the manufacturer of this bagger attachment.**

## Inspecting the Mower Blades

1. Inspect the mower blades regularly and whenever a blade strikes a foreign object.
2. If the blades are badly worn or damaged, install new blades. Refer to your *Operator's Manual* for complete blade maintenance.

## Caring for the Grass Bags

Washing the grass bags is not recommended.

To prevent rapid deterioration of the bag material, store the bags where they will dry completely after each use.

## Cleaning the Bagger Attachment

1. After each use, remove and wash the inside and outside of the bagger top, discharge tube, blower, and the underside of the mower, using water sprayed from a garden hose. Use a mild automotive detergent to remove stubborn dirt.
2. Make sure you remove matted grass from all parts.
3. After washing, let all of the parts dry thoroughly. Do not wash the grass bags.

## Storing the Bagger Attachment

1. Clean the bagger attachment; refer to Cleaning the Bagger Attachment, page 17.
2. Inspect the bagger attachment for damage; refer to Inspecting the Bagger Attachment, page 17.
3. Make sure the grass bags are empty and thoroughly dry.
4. Store the bagger in a clean, dry place, out of direct sunlight. This protects the plastic parts and extends the life of the bagger. If you must store the bagger outside, cover it with a weatherproof cover.







Consumer  
TimeCutter Z

## The Toro Total Coverage Guarantee

A Two-Year Full Warranty  
(Limited Warranty for Commercial Use)

### Conditions and Products Covered

The Toro Company and its affiliate, Toro Warranty Company, pursuant to an agreement between them, jointly promise to repair any Toro Product used for normal residential purposes\* if defective in materials or workmanship. The following time periods apply from the date of purchase:

<u>Products</u>	<u>Warranty Period</u>
• All TimeCutter Mowers and Attachments	2 year full warranty
• All Batteries	1 year full warranty

This warranty covers both the cost of parts and labor, and transportation within a fifteen mile radius of the servicing dealer.

This warranty applies to all consumer TimeCutter Mowers and their attachments.

\* Normal residential purposes means use of the product on the same lot as your home. Use at more than one location is considered commercial use, and the commercial use warranty would apply.

### Limited Warranty for Commercial Use

Toro Consumer Products and attachments used for commercial, institutional, or rental use are warranted against defects in materials or workmanship for the following time periods from the date of purchase:

<u>Products</u>	<u>Warranty Period</u>
• Air Cooled Gas Engines	90 day limited warranty
• All other items	30 day limited warranty

### Instructions for Obtaining Warranty Service

If you think that your Toro Product contains a defect in materials or workmanship, follow this procedure:

1. Contact any Toro Authorized or Master Service Dealer to arrange service at their dealership. To locate a dealer convenient to you, refer to the Yellow Pages of your telephone directory (look under "Lawn Mowers") or access our website at [www.Toro.com](http://www.Toro.com). U.S. Customers may also call toll free: 866-854-9035 to use our 24-hour Toro dealer locator system.
2. Bring the product and your proof of purchase (sales receipt) to the Service Dealer.

If for any reason you are dissatisfied with the Service Dealer's analysis or with the assistance provided, contact us at:

Customer Care Department, Consumer Division  
Toro Warranty Company  
8111 Lyndale Avenue South  
Bloomington, MN 55420-1196  
Toll Free: 866-216-6029 (U.S. customers)  
Toll Free: 866-216-6030 (Canada customers)

### Countries Other than the United States or Canada

Customers who have purchased Toro products exported from the United States or Canada should contact their Toro Distributor (Dealer) to obtain guarantee policies for your country, province, or state. If for any reason you are dissatisfied with your Distributor's service or have difficulty obtaining guarantee information, contact the Toro importer. If all other remedies fail, you may contact us at Toro Warranty Company.

### Owner Responsibilities

You must maintain your Toro Product by following the maintenance procedures described in the operator's manual. Such routine maintenance, whether performed by a dealer or by you, is at your expense.

### Items and Conditions Not Covered

There is no other express warranty except for special emission system coverage on some products. This express warranty does not cover:

- Cost of regular maintenance service or parts, such as filters, fuel, lubricants, tune-up parts, blade sharpening, brake and clutch adjustments.
- Any product or part which has been altered or misused or required replacement or repair due to normal wear, accidents, or lack of proper maintenance.
- Repairs necessary due to improper fuel, contaminants in the fuel system, or failure to properly prepare the fuel system prior to any period of non-use over three months.
- Pickup and delivery charges for distances beyond a fifteen mile radius from an Authorized Toro Service Dealer.

All repairs covered by this warranty must be performed by an Authorized Toro Service Dealer using Toro approved replacement parts.

### General Conditions

Repair by an Authorized Toro Service Dealer is your sole remedy under this warranty.

Neither The Toro Company nor Toro Warranty Company is liable for indirect, incidental or consequential damages in connection with the use of the Toro Products covered by this warranty, including any cost or expense of providing substitute equipment or service during reasonable periods of malfunction or non-use pending completion of repairs under this warranty.

Some states do not allow exclusions of incidental or consequential damages, or limitations on how long an implied warranty lasts, so the above exclusions and limitations may not apply to you.

This warranty gives you specific legal rights, and you may also have other rights which vary from state to state.