



826LE Power Max Snowthrower

Model No. 38621 - 250000001 and up.

Parts Catalog

Ordering Replacement Parts

To order replacement parts, please supply the part number, the quantity, and the description of each part desired.

Understanding Reference Numbers

Each identified part in an illustration has a reference number. The reference number for a part also appears in the parts list, along with other information about the part.

This catalog uses two special reference number formats, one to indicate parts in a service assembly and another to indicate the quantity of a given part in an illustration.

Service Assembly Reference Numbers

Parts in service assemblies have reference numbers in the form a:b. The a represents the reference number of the entire service assembly and the b represents a sequential number unique to each part within the service assembly.

For example, a wheel assembly might be identified by reference number 6, the tire by 6:1, the valve by 6:2, and the wheel by 6:3. When you order the assembly identified by reference number 6, you receive all parts identified by reference numbers 6:1, 6:2, and 6:3. However, you may also order any part individually. Reference numbers of this type appear in illustrations and in part lists.

Reference Numbers Indicating Quantity

In an illustration, if a reference number indicates more than one part, the reference number has the form nX y. The n represents the quantity of the part, the X is the multiplication symbol, and the y represents the reference number.

For example, in an illustration, the reference number 2X 37 means that two of the parts identified by reference number 37 are indicated.

Contents

Description	Page	Description	Page
Auger and Housing Assembly 3	Carburetor Assembly No. 640052 Tecumseh	
Auger Gearcase Assembly No. 106-4580 4	HMSK-80 155724X 13
Chute Assembly 5	Engine Assembly No. 1 Tecumseh HMSK-80	
Chain Drive Assembly 6	155724X 14
Frame Assembly 7	Engine Assembly No. 2 Tecumseh HMSK-80	
Handle Control Assembly 9	155724X 16
Handle and Control Assembly 10	220 Volt Electric Starter Assembly No. 37102	
Chute Control Assembly 11	Tecumseh HMSK-80 155724X 18
Engine Assembly 12	Rewind Starter Assembly No. 590749	
		Tecumseh HMSK-80 155724X 19
		Rewind Starter Assembly No. 590733	
		(Optional) Tecumseh HMSK-80 155724X 20

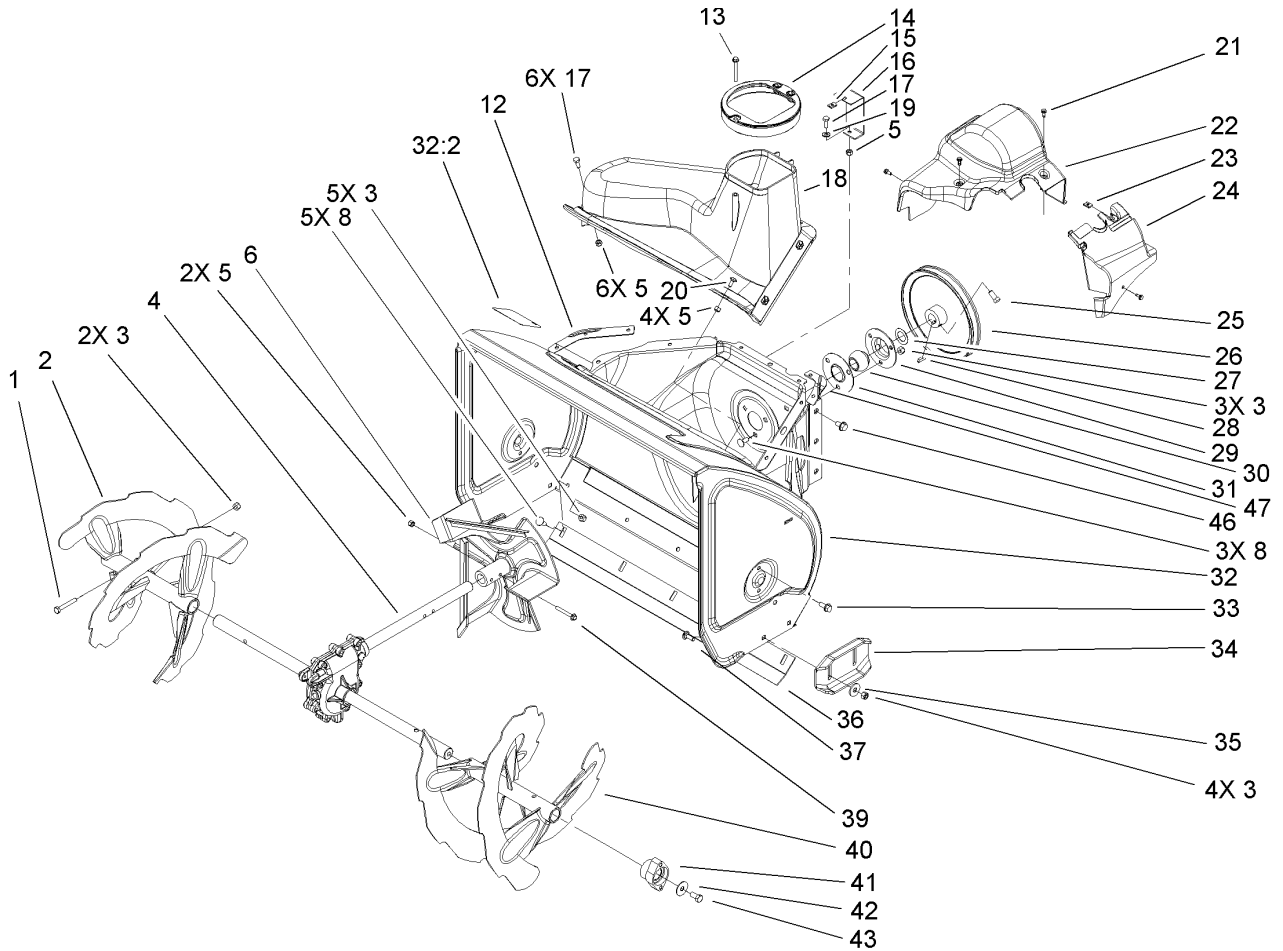
Part Description Abbreviations

Part descriptions in this catalog may include the following abbreviations.

AR. as required	HWHTF. hex washer head thread forming
ASM. assembly	HYD. hydraulic
CARR. carriage	INC. incorporated
DEG. degrees	LH. left hand
EXT. external	NI. nylon insert
FH. flat head	NPTF. national pipe thread fine
GA. gauge	PPH. phillips pan head
HF. hex flange	PRH. phillips round head
HH. hex head	PTH. phillips truss head
HHF. hex head flange	PTO. power take off
HHFTF. hex head flange thread forming	RH. right hand
HJ. hex jam	ROPS. roll over protection system
HLH. hex lag head	SFH. slotted fillister head
HOC. height-of-cut	SHH. slotted hex head
HS. hex	SHWH. slotted hex washer head
HSBH. hex socket button head	SPH. slotted pan head
HSFH. hex socket flat head	SQH. square head
HSH. hex socket head	SRH. slotted round head
HWH. hex washer head	STD. standard

Footnotes

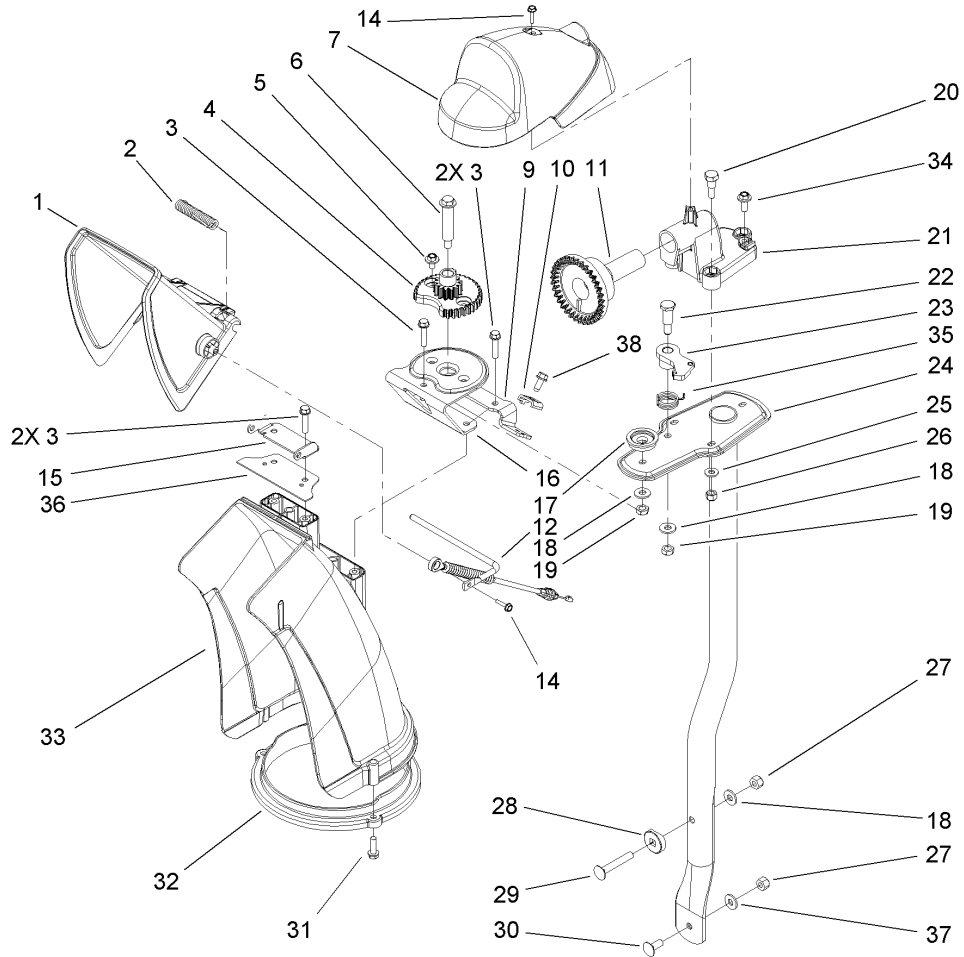
- | | |
|--|---------------------------------|
| ❶ Not illustrated | ❷ Not serviced separately |
| ❸ Obtain parts from your local Tecumseh dealer | ❹ Included in Gasket Set 36450C |



Auger and Housing Assembly

Ref	Part No.	Qty.	Description
1	322-10	2	Screw-HH
2	106-7289-03	1	RH Auger ASM
3	3296-29	14	Nut-Lock, NI
4	106-4580	1	26in Auger Gearcase ASM
5	3296-42	13	Nut-Lock, NI
6	106-4576-03	1	Impeller ASM
8	3230-23	8	Screw-CARR
12	107-1017-03	1	Seal-Flange, Cover
13	107-3003	1	Screw-Plastite
14	107-3006	1	Guide-Chute
15	107-1013	1	Nut-Speed, U-Type
16	107-1014-03	1	Bracket-Cover, Clip Nut
17	321-4	7	Screw-HH
18	108-0017	1	Cover
19	3256-22	1	Washer-Flat
20	3229-1	4	Screw-CARR
21	32144-112	4	Screw-HWH
22	107-1001	1	Cover-Belt
23	701493	1	Nut-Speed
24	107-1016	1	Cover-Extension, Belt
25	3242-4	2	Screw-Set, SQH
26	62-1300	1	Pulley-Impeller
27	252-80	1	Washer-Thrust
28	3257-23	1	Key-Woodruff

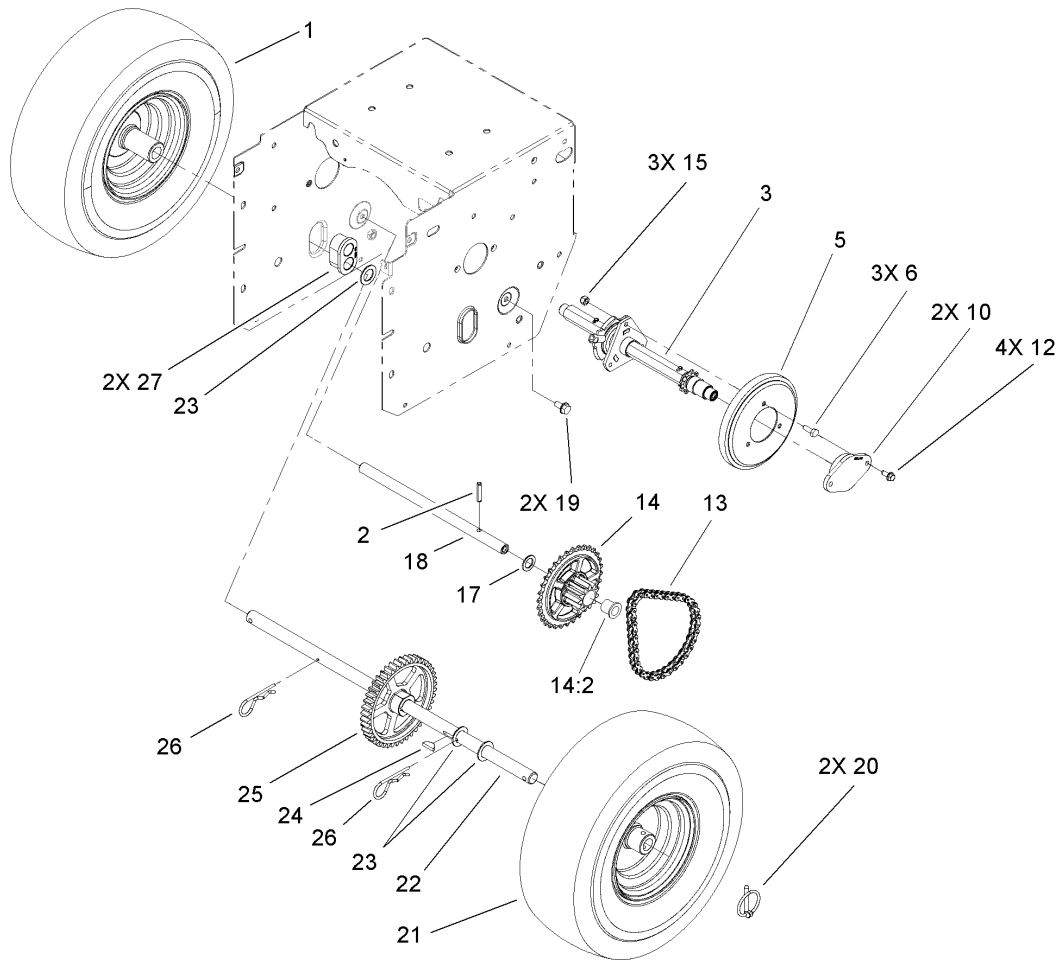
Ref	Part No.	Qty.	Description
29	26-6110	1	Flange-Cup, Bearing
30	63-3450	1	Bearing-Ball
31	26-6120	1	Flange-Cup, Bearing
32	107-3822	1	26in Auger Housing ASM
32:2	107-3040	1	Decal-Danger, Auger
33	32144-70	4	Screw-HH
34	106-4588-01	2	Skid
35	52-2861	4	Washer
36	105-9976-01	1	Scraper-Fixed
37	3230-16	4	Screw-CARR
39	321-44	2	Screw-HHF
40	106-7299-03	1	26in LH Auger ASM
41	106-4570	2	Auger-Bearing
42	3-0750	2	Washer
43	323-4	2	Screw-HH
46	32144-14	6	Screw-HWH
47	108-0039-03	1	Seal



Chute Assembly

Ref	Part No.	Qty.	Description
1	106-7309	1	Deflector-Chute
2	106-4594	1	Spring-Torsion
3	46-8092	5	Screw-Plastite
4	106-4472	1	Gear-Chute
5	46-6810	2	Screw And Washer ASM
6	100-9880	1	Bolt-Shoulder
7	106-4585	1	Cover-Gear, Chute
9	106-7296	1	Bracket-Cable, Clamp
10	106-7297	1	Clamp-Cable
11	106-4471	1	Gear-Face
12	107-1021	1	Rod-Deflector
14	98-1375	2	Screw-HWH
15	106-7266	1	Bracket-Deflector
16	106-4582-03	1	Bracket-Support, Chute
17	106-4422	1	Spacer-Chute
18	3256-2	3	Washer-Flat
19	3296-47	2	Nut-Lock, NI
20	106-7276	3	Screw-Shoulder
21	106-7257	1	Mount-Gear, Face
22	63-2650	1	Screw-Shoulder
23	106-4476	1	Latch-Chute
24	106-7253-03	1	Tube-Support ASM
25	3256-22	3	Washer-Flat
26	3296-42	3	Nut-Lock, NI

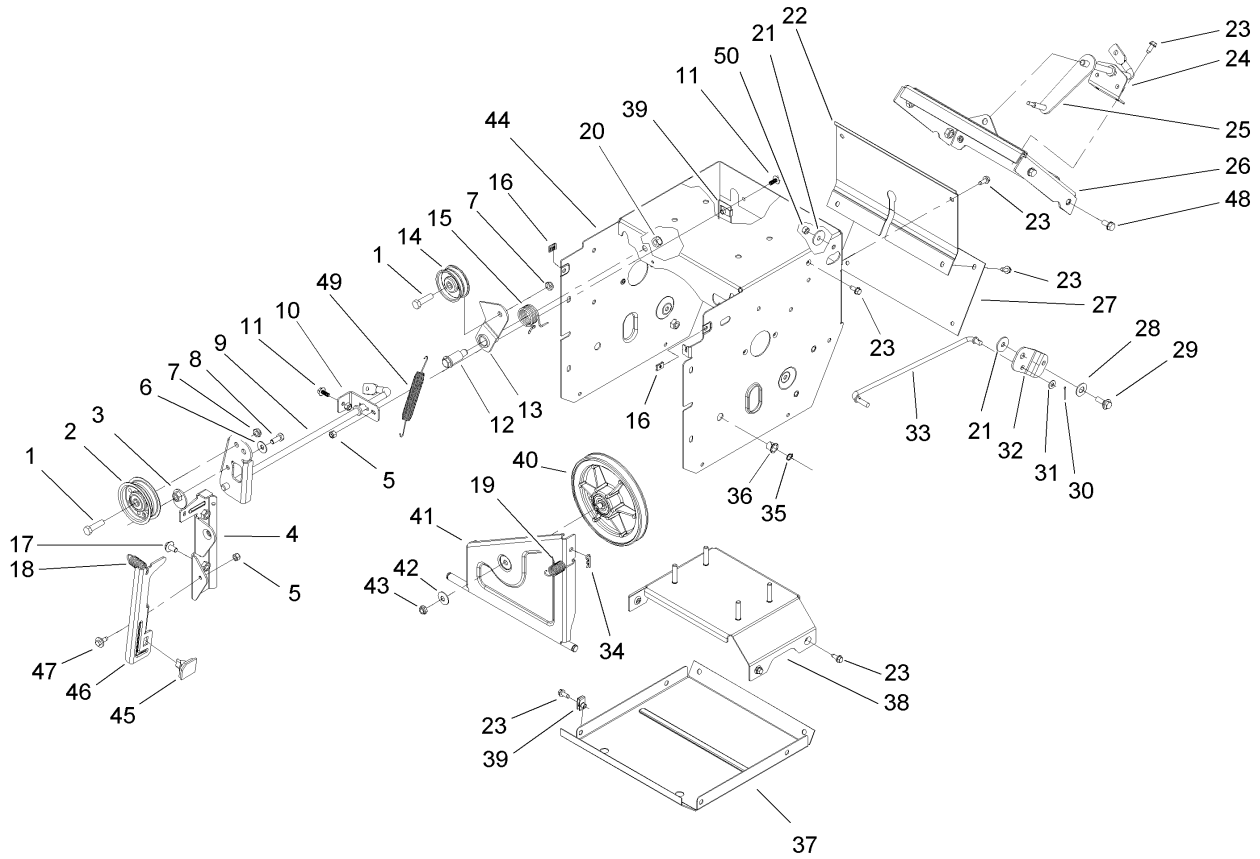
Ref	Part No.	Qty.	Description
27	3296-29	2	Nut-Lock, NI
28	106-7260	1	Washer-Curved
29	3230-5	1	Screw-CARR
30	3230-23	1	Screw-CARR
31	46-8091	3	Screw-HWH
32	105-9991	1	Ring-Chute
33	106-4440	1	Chute-Discharge
34	46-6811	1	Screw-HWH
35	106-4475	1	Spring-Torsion
36	107-1019	1	Seal-Chute
37	3290-456	1	Washer-Belleville
38	32144-10	1	Screw-HWH



Chain Drive Assembly

Ref	Part No.	Qty.	Description
1	107-3042	1	Tire
1	107-3043	1	Rim-Tire
2	32121-9	1	Pin-Roll, Slotted
23		1	Hexshaft ASM
5	106-4480	1	Wheel-Friction
6	321-4	3	Screw-HH
10	108-2981	2	Retainer-Bearing
12	32144-10	4	Screw-HWH
13	108-0016	1	Chain-Roller
13	2710-6	1	Link-Connecting
14	108-0013	1	Sprocket ASM
14:2	108-2974	2	Bushing-Flange
15	3296-42	3	Nut-Lock, NI
17	107-3041	1	Washer-Flat
18	106-4592	1	Shaft-Intermediate
19	32144-14	2	Screw-HWH
20	107-3039	2	Klik Pin ASM
21	107-3042	1	Tire
21	107-3043	1	Rim-Tire
22	106-4449	1	Shaft-Axle
23	3-8664	3	Washer-Thrust
24	3257-7	1	Key-Woodruff
25	106-4572	1	Gear-Axle, 44 Tooth
26	3290-343	2	Pin-Hair

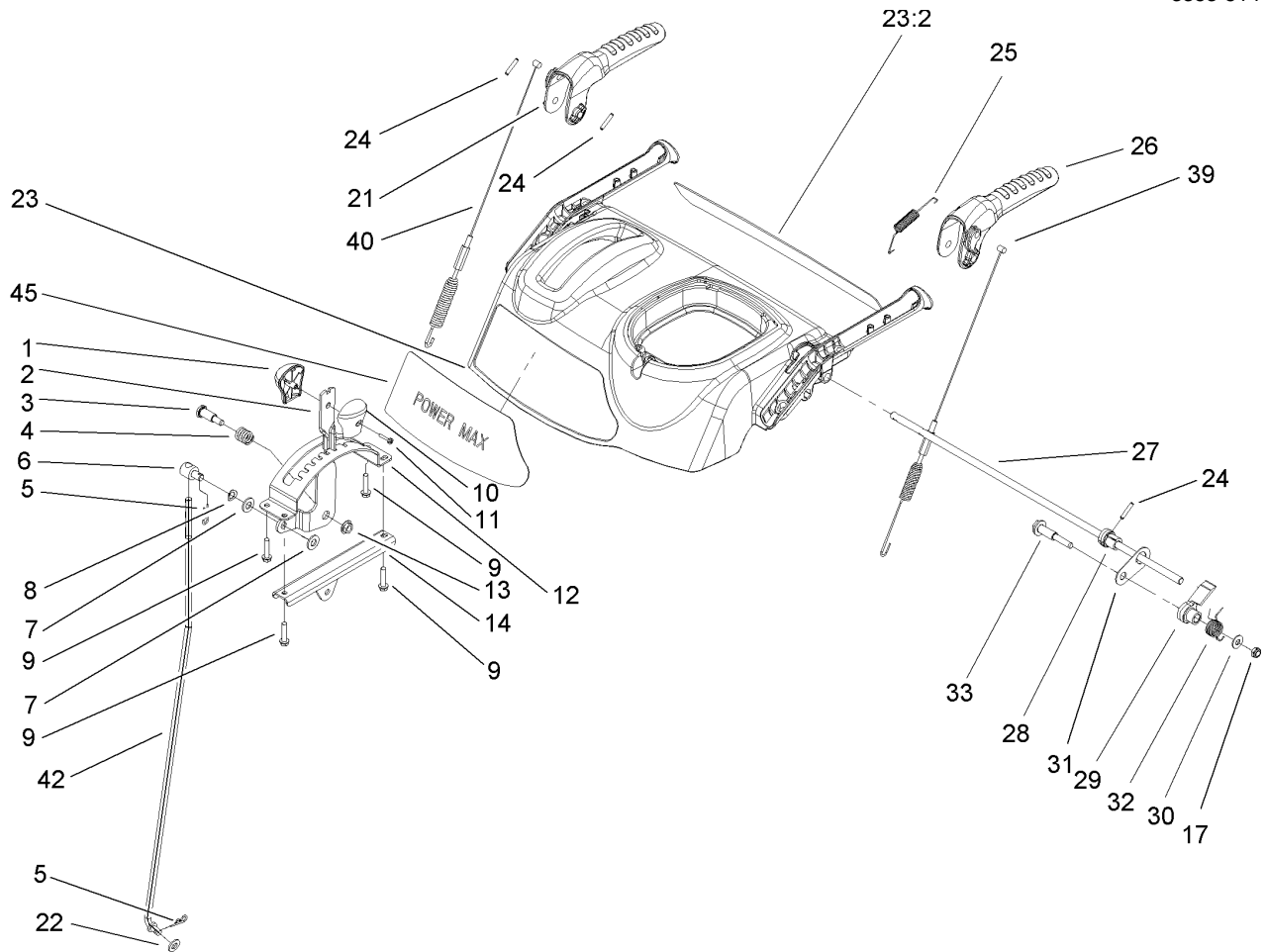
Ref	Part No.	Qty.	Description
27	106-4558	2	Bearing-Axle



Frame Assembly

Ref	Part No.	Qty.	Description
1	323-8	2	Screw-HH
2	92-7104	1	Pulley-Idler
3	107-1047	1	Nut ASM
4	107-1039	1	Bracket-Idler, Impeller
5	3296-42	3	Nut-Lock, NI
6	3290-456	1	Washer-Belleville
7	3296-59	2	Nut-Lock, NI
8	322-3	1	Screw-HH
9	107-3838-03	1	Impeller Clutch ASM
10	106-7341	1	Bracket-Rear, Clutch
11	99-6810	2	Screw-HH
12	107-1022	1	Bolt-Shoulder
13	108-0011	1	Arm-Idler, Traction
14	3-4244	1	Pulley-Idler
15	108-0010	1	Spring-Torsion
16	107-1013	2	Nut-Speed, U-Type
17	3234-7	2	Screw-HHF
18	107-1045	1	Spring-Extension
19	107-1003	1	Spring-Extension
20	3296-76	1	Nut-Lock, NI
21	5-4460	2	Washer-Pivot
22	106-4556-01	1	Cover-Upper
23	32144-10	17	Screw-HWH
24	108-0036	1	Bracket-Shift Rod

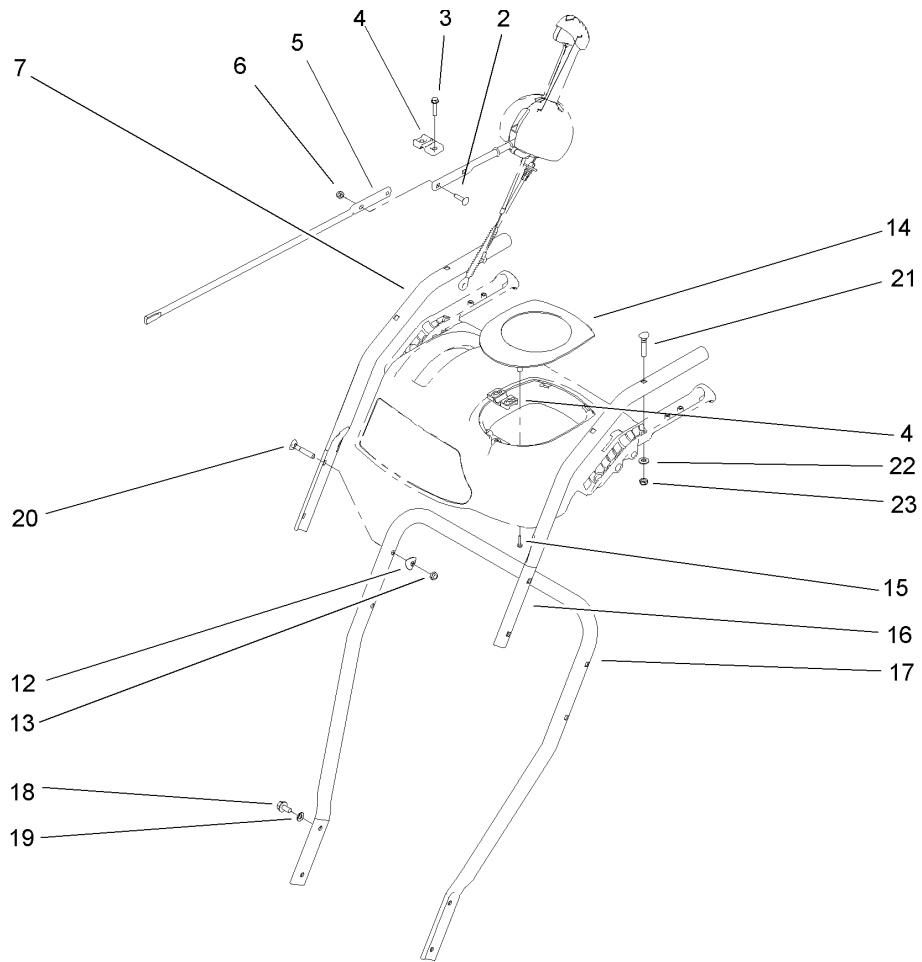
Ref	Part No.	Qty.	Description
25	106-7268	1	Lever-Control, Traction
26	108-0026-01	1	Shift Plate ASM
27	106-7345-01	1	Cover-Lower
28	25-5640	1	Washer
29	27-0410	1	Screw-Shoulder
30	3272-4	1	Pin-Cotter
31	3256-23	1	Washer-Flat
32	107-1011	1	Bellcrank-Drive
33	106-4467	1	Link-Control, Speed
34	3290-307	1	Pin-Hair
35	32151-61	2	Ring-Retaining
36	256-257	2	Bushing-Nyliner
37	106-7330-01	1	Pan-Bottom
38	106-7315	1	Brace Frame ASM
39	107069	8	Clip
40	108-0031	1	Traction Pulley ASM
41	108-0032	1	Pulley Pivot ASM
42	3290-340	1	Washer-Belleville
43	3296-5	1	Nut-Lock
44	108-0019-01	1	Traction Frame ASM
45	66-8060	1	Pad-Brake
46	107-1000	1	Arm-Brake
47	92-9698	1	Screw-Shoulder
48	32144-14	4	Screw-HWH



Handle Control Assembly

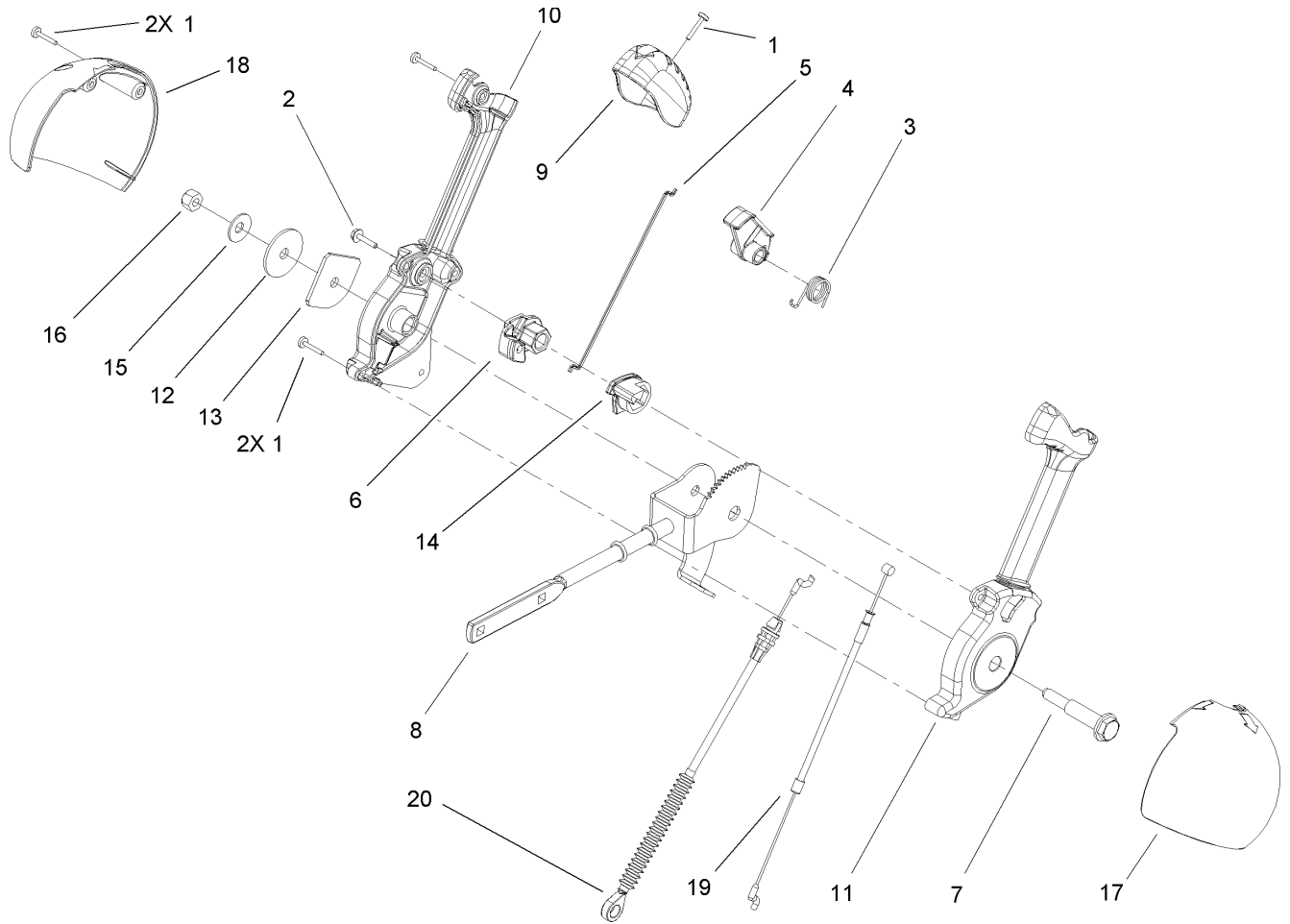
Ref	Part No.	Qty.	Description
1	106-4423	1	Knob-Shift, RH
2	106-7278-03	1	Selector-Speed
3	63-2650	1	Screw-Shoulder
4	107-3017	1	Spring-Compression
5	3290-307	2	Pin-Hair
6	101161	1	Trunnion
7	3256-24	2	Washer-Flat
8	612586	1	Washer-Spring
9	46-8092	4	Screw-Plastite
10	105-9999	1	Knob-Shift, LH
11	94-4496	1	Screw-PPH
12	106-7277-03	1	Guide-Selector, Speed
13	32128-13	1	Nut-HF
14	106-7279-03	1	Mount-Selector, Speed
17	3296-72	1	Nut-Lock, NI
21	106-4413	1	Lever-Auger
22	3256-38	1	Washer-Flat
23	107-3826	1	Control Panel ASM
23:2	106-4523	1	Decal-Panel, Back Control
24	32121-125	3	Pin-Spring
25	107-3001	1	Spring-Tension
26	106-4410	1	Lever-Traction
27	105-9996	1	Rod-Lockout
28	107-1043	1	Cam-Lockout

Ref	Part No.	Qty.	Description
29	108-0023	1	Latch-Lockout
30	98-3499	1	Washer-Flat
31	107-3000	1	Link-Lockout
32	108-0024	1	Spring-Torsion
33	106-4412	1	Screw-Shoulder
39	106-4563	1	Cable-Traction
40	106-4599	1	Cable-Auger
42	107-1005	1	Rod-Shift
45	106-4518	1	Decal



Handle and Control Assembly

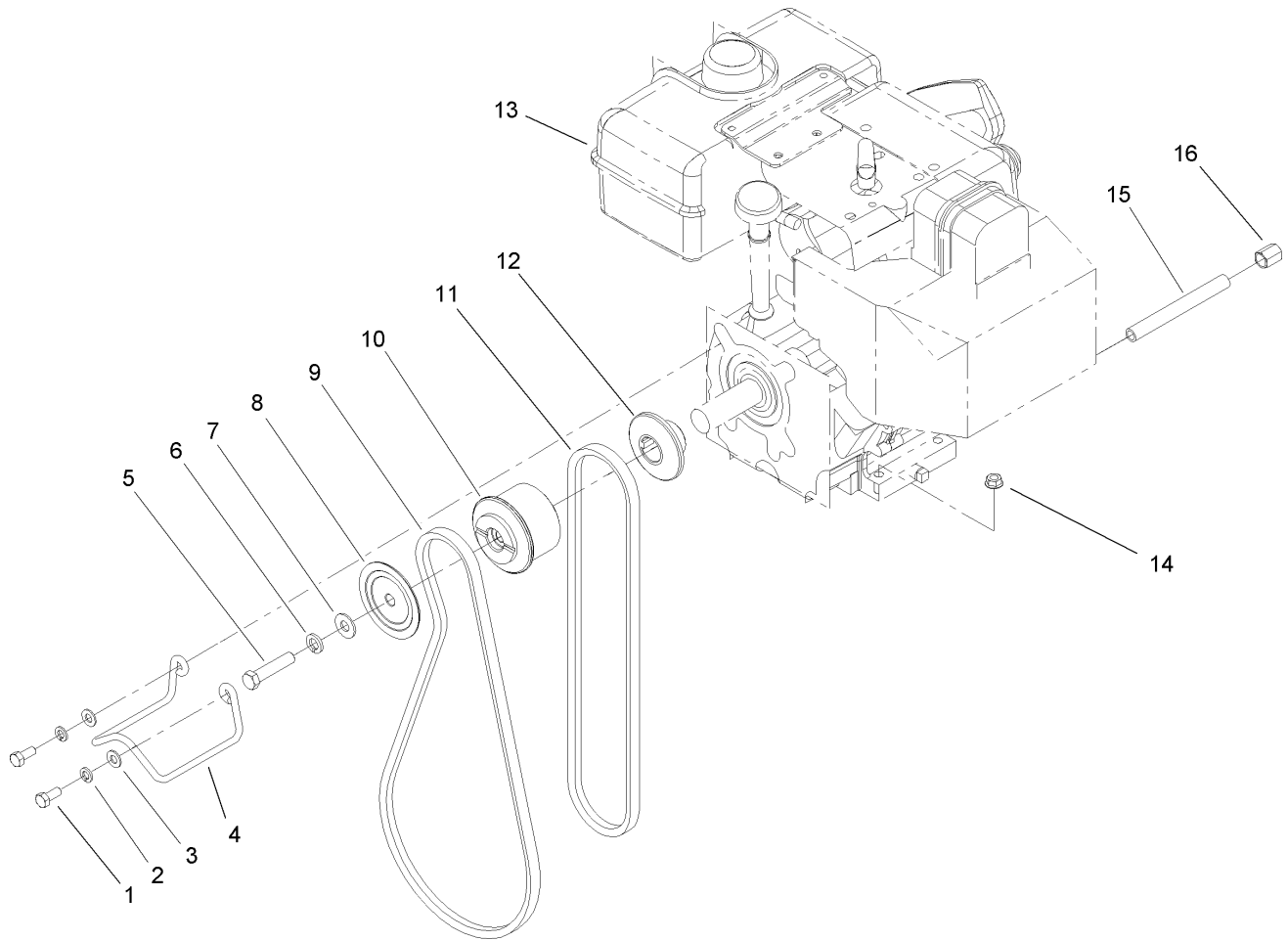
Ref	Part No.	Qty.	Description
2	3229-30	2	Screw-CARR
3	46-8092	2	Screw-Plastite
4	105-9987	2	Support-Rod
5	106-7283	1	Rod-Chute, Front
6	3296-73	2	Nut-Lock, NI
7	108-0038-03	1	Handle-Upper, RH
12	107-3844	4	Washer
13	3296-72	4	Nut-Lock, NI
14	106-4586	1	Cover-Panel, Control
15	94-4496	2	Screw-PPH
16	108-0037-03	1	Handle-Upper, LH
17	105-9981-03	1	Handle-Lower
18	32144-14	4	Screw-HWH
19	3290-475	4	Washer-Belleville
20	92-2260	4	Screw-Handle
21	107-3018	4	Screw-Handle
22	3256-70	4	Washer-Flat
23	3296-72	4	Nut-Lock, NI



Chute Control Assembly

Ref	Part No.	Qty.	Description
1	94-4496	5	Screw-PPH
2	98-1375	1	Screw-HWH
3	105-9982	1	Spring-Torsion
4	105-9984	1	Trigger-Latch
5	105-9985	1	Link-Latch
6	105-9988	1	Lever-Cable, Deflector
7	105-9995	1	Screw-Shoulder
8	106-4479	1	Rod-Control, Chute
9	106-7280	1	Cap-Lever
10	106-7281	1	Lever-Chute Control, RH
11	106-7282	1	Lever-Chute Control, LH
12	107-3002	1	Washer-Nylon
13	106-7295	1	Plate-Friction
14	106-7310	1	Pawl-Latch
15	3290-456	1	Washer-Belleville
16	3296-29	1	Nut-Lock, NI
17	105-9986	1	Cover-Chute Lever, LH
18	106-7292	1	Cover-Chute Lever, RH
19	105-9989	1	Cable-Chute Release
20	105-9990	1	Cable-Control, Deflector

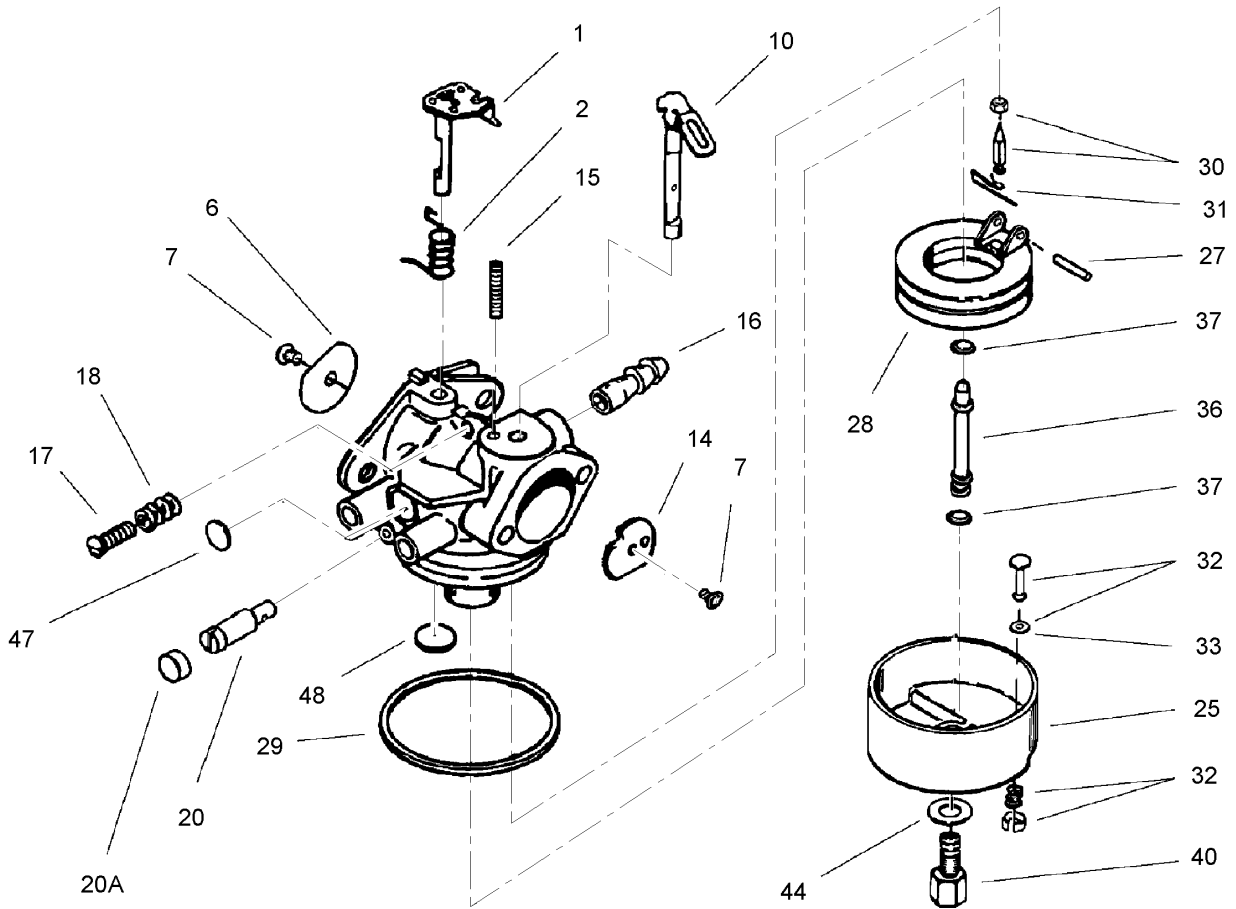
--	--	--	--



Engine Assembly

Ref	Part No.	Qty.	Description
1	3210-3	2	Screw-HH
2	3253-4	2	Washer-Lock
3	3256-23	2	Washer-Flat
4	107-3835	1	Guide-Belt
5	3212-8	1	Screw-HH
6	3253-6	1	Washer-Lock
7	3256-4	1	Washer-Flat
8	62-0940	1	Sheave-Half, Impeller
9	106-4498	1	Belt-V
10	106-7333	1	Pulley-Engine, Center
11	94-8812	1	V Belt-Traction
12	106-7334	1	Sheave-Half, Traction
13		1	Engine-Tecumseh, Hmsk-80 155724x
14	32128-20	4	Nut-HF
15	289-34	1	Nipple-Pipe
16	288-2	1	Cap-Pipe

--	--	--	--



Carburetor Assembly No. 640052 Tecumseh HMSK-80 155724X

Ref	Part No.	Qty.	Description
❶	631776A	1	Throttle Shaft And Lever ASM
❷	631970	1	Spring-Return, Throttle
❸	631778	1	Shutter-Throttle
❹	650506	2	Screw-Shutter
❺	632112	1	Choke Shaft And Lever ASM
❻	632174	1	Shutter-Choke
❼	630735	1	Spring-Positioning, Choke
❽	632164	1	Fitting-Fuel
❾	650417	1	Throttle Crack Screw/Idle Speed Screw
❿	630766	1	Spring-Tension
⓫	640016	1	Screw-Restrictor, Idle
⓬	640053	1	Cap-Idle Restrictor Screw
⓭	631951	1	Float Bowl ASM (Incl. Ref. # 32 And 33)
⓮	631024	1	Shaft-Float
⓯	632019	1	Float
⓰	631028	1	O-Ring, Float Bowl
⓱	631021	1	Inlet Needle, Seat And Clip (Incl. Ref. # 31)
⓲	631022	1	Clip-Spring
⓳	27136A	1	Bowl Drain ASM
⓴	27554	1	Gasket-Drain Plunger
⓵	640005	1	Tube-Nozzle, Main
⓶	632547	2	O-Ring (Main Nozzle Tube)

Ref	Part No.	Qty.	Description
⓷	640055	1	Nut-High Speed, Bowl
⓸	27110	1	Gasket
⓹	630748	1	Plug-Welch, Idle Mixture Well
⓺	631027	1	Plug-Welch, Atmospheric Vent

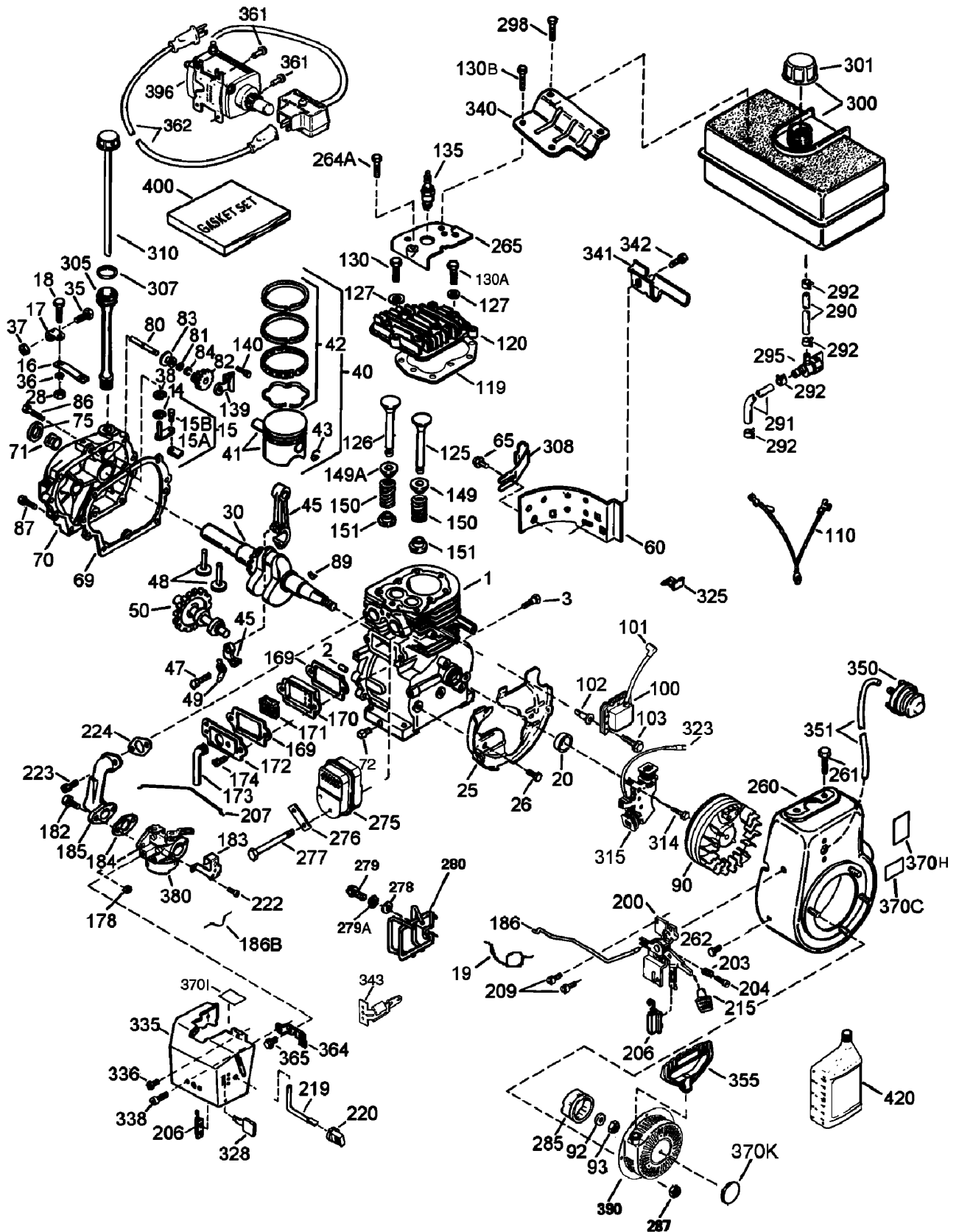
Engine Assembly No. 1

Tecumseh HMSK-80 155724X

Ref	Part No.	Qty.	Description	Ref	Part No.	Qty.	Description
③1	35385	1	Cylinder ASM (Incl. Ref. # 2, 20 And 72)	③89	32589	1	Key-Flywheel
③2	27652	2	Pin-Dowel	③90	611093	1	Flywheel (W/ring Gear)
③3	650820	2	Screw, 1/4-20 X 1/2in	③92	650880	1	Washer-Lock
③14	28277	1	Washer	③93	650881	1	Nut-Flywheel
③15	30699C	1	Rod-Governor (Incl. Ref. # 15a And 15b)	③100	35135A	1	Solid State Ignition (Incl. Ref. # 101)
③15A	30700	1	Yoke-Governor	③101	610118	1	Cover-Spark Plug
③15B	650494	1	Screw, 6-40 X 5/16in	③102	651024	2	Solid State Mounting Stud
③16	33454A	1	Lever-Governor	③103	651007	2	Screw
③17	29916	1	Clamp-Lever, Governor	③110	35187	1	Wire-Ground
③18	651028	1	Screw, Torx T-15, 8-32 X 3/8in	①③110A	37047	1	Wire-Ground
③19	34663	1	Spring- Control, Speed	③119	36448	1	Gasket-Head, Cylinder
③20	35319	1	Seal-Oil	③120	36449	1	Head-Cylinder
③25	36460	1	Baffle-Housing, Blower	③125	27878A	1	Exhaust Valve (Std.) (Incl. Ref. # 151)
③26	650561	2	Screw, 1/4-20 X 5/8in	③125	27880A	1	Exhaust Valve (1/32" Os) (Incl. Ref. #151)
③28	30322	1	Lock Nut, 8-32	③126	34035	1	Intake Valve (Std.) (Incl. Ref. # 151)
③30	35571A	1	Shaft-Crank	③127	650691	2	Washer
③35	29826	1	Screw, 10-32 X 3/4in	③130	6021A	7	Screw (5/16-18 X 1-7/16in)
③36	29918	1	Washer-Lock	③130A	650727	2	Screw, 5/16-18 X 1-25/32in
③37	29216	1	Lock Nut, 10-32	③130B	651055	2	Screw, 5/16-18 X 39/64in
③38	29642	1	Ring-Retaining	③135	35395	1	Spark Plug-Resistor
③40	40011	1	Piston, Pin And Ring Set (Std.)	③139	33369	1	Bracket-Gear, Governor
③40	40012	1	Piston, Pin And Ring Set (.010" Os)	③140	650836	2	Screw, 10-24 X 1/2in
③41	40009	1	Piston And Pin ASM (Std.) (Incl. Ref. #43)	③149	27882	1	Cap-Spring, Valve
③41	40010	1	Piston And Pin ASM (.010" Os) (Incl. Ref. #43)	③149A	35862	1	Cap-Spring, Valve
③42	40013	1	Ring Set (Std.)	③150	27881	2	Spring-Valve
③42	40014	1	Ring Set (.010 Os)	③151	32581	2	Keeper-Spring, Valve
③43	27888	2	Ring-Retaining, Piston Pin	③④169	27896A	2	Gasket-Valve Cover
③45	36897	1	Connecting Rod Asm. (Incl. Ref. # 47 And 49)	③170	28423	1	Body-Breather
③47	651033	2	Bolt-Connecting Rod	③171	28424	1	Element-Breather
③48	34034	2	Lifter-Valve	③172	28425	1	Cover-Valve
③49	36896	1	Dipper-Oil	③173	35350	1	Tube-Breather
③50	35375	1	Camshaft	③174	650128	2	Screw, 10-24 X 1/2in
③60	33273A	1	Extension-Housing, Blower	③178	29752	2	Nut And Lock Washer ASM
③65	650128	1	Screw, 10-24 X 1/2in	③182	30088A	2	Screw, 1/4-28 X 1in
③69	37342	1	Gasket-Cylinder Cover	③183	34587A	1	Bracket-Choke
③70	35376A	1	Cylinder Cover (Incl. Ref. # 71, 75, 80-84)	③④184	33263	1	Gasket-Carburetor To Intake Pipe
③71	35377	1	Bushing-Crankshaft	③185	33877	1	Pipe-Intake
③72	27642	1	Plug-Drain, Oil	③186	34667	1	Link-Governor
③75	35319	1	Seal-Oil	③186B	36652	1	Spring-Choke
③80	37587	1	Shaft-Governor	③200	34677	1	Control Bracket (Incl. Ref. # 19, 203, 204 And 206)
③81	651080	1	Washer				
③82	37588	1	Governor Gear ASM (Incl. Ref. # 81)				
③83	30588A	1	Spool-Governor				
③84	29193	1	Ring-Retaining				
③86	650833	7	Screw, 1/4-20 X 1-3/16in				
③87	650832	1	Screw, 1/4-20 X 1-11/16in				

Engine Assembly No. 2

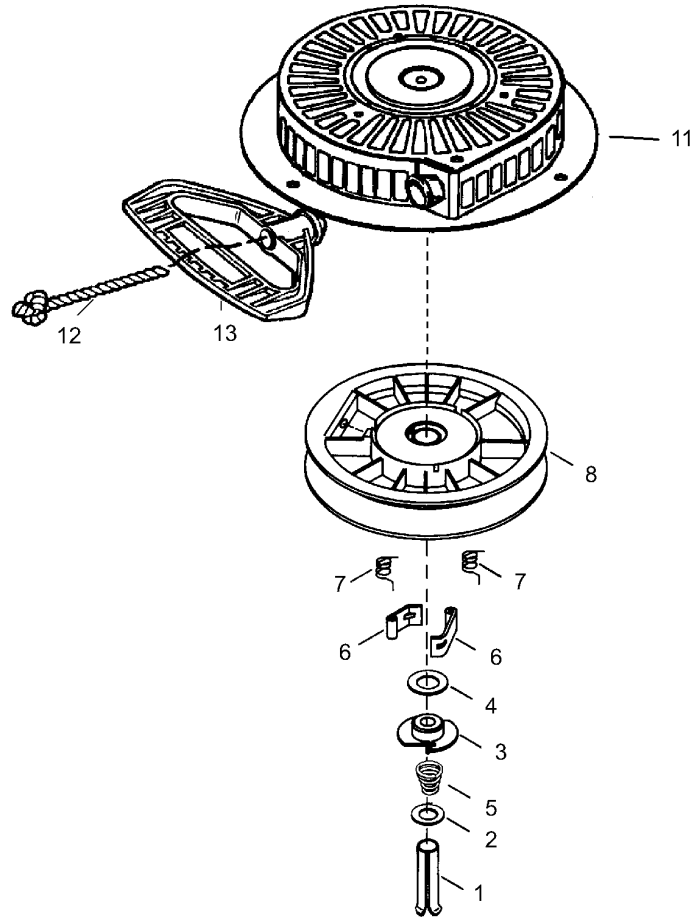
Tecumseh HMSK-80 155724X



Engine Assembly No. 2

Tecumseh HMSK-80 155724X

Ref	Part No.	Qty.	Description	Ref	Part No.	Qty.	Description
③203	31342	1	Spring-Compression	③343	35079A	1	Key Switch Bracket (Incl. Ref. #343a)
③204	651029	1	Screw, 5-40 X 7/16in	①③343A	651060	1	Screw, 10-32 X 23/64in
③206	610973	1	Terminal	③350	570682A	1	Primer ASM
③207	33878	1	Link-Throttle	③351	32180C	1	Line-Primer
③209	650821	2	Screw, 10-32 X 1/2in	③355	590574	1	Handle-Mitten Grip (Not Included With Starter)
③215	35440	1	Knob-Control	③361	650990	2	Screw, T-30, 1/4-20 X 15/32in
③219	34586	1	Rod-Choke	③364	33377	1	Bracket-Carburetor
③220	35438	1	Knob-Choke	③365	650767	2	Screw, 8-32 X 27/64in
③222	28820	2	Screw, 10-32 X 1/2in	③370C	36501	1	Decal-Primer
③223	650378	2	Screw, Torx T-30, 5/16-18 X 1-1/8in	③370H	35077	1	Decal-Instruction
③224	27915A	1	Gasket-Pipe, Intake	③370I	37119	1	Decal-Warning
③260	35447A	1	Housing-Blower	③370K	36695	1	Decal-Starter
③261	650788	2	Screw, 5/16-18 X 3/4in	①③371D	36534	1	Decal-Caution
③262	29747B	2	Screw	③380	640052	1	Carburetor (Incl. Ref. #184)
③264A	650802	1	Screw, 1/4-20 X 5/8in	③390	590749	1	Rewind Starter
③265	33272D	1	Cover-Head, Cylinder	③396	37102	1	Electric Motor ASM (220 Volt)
③275	35056	1	Muffler	③400	36450C	1	Gasket Set
③276	31588	1	Plate-Locking	③420	730226A	1	Oil, Sae 5w30 (Quart)
③277	651002	2	Screw, 5/16-18 X 4-3/16in				
③278	650147	2	Washer-Flat				
③279	650980	2	Screw, 10-16 X 47/64				
③279A	650979	2	Washer-Lock				
③280	36294	1	Muffler Heat Shield ASM				
③285	35985B	1	Cup-Starter				
③287	29752	4	Nut And Lock Washer ASM				
③290	29774	1	Line-Fuel				
③291	30962	1	Line-Fuel				
③292	26460	4	Clamp-Line, Fuel				
③295	35857	1	Fuel Shut-Off Valve ASM (Incl. Ref. # 292)				
③298	650665	2	Screw, 1/4-15 X 3/4in				
③300	34156A	1	Fuel Tank (Incl. Ref. # 292 And 301)				
③301	36246	1	Cap-Fuel				
③305	35554	1	Tube-Fill, Oil				
③307	35499	1	O-ring				
③308	35540	1	Clip-Tube, Fill				
③310	36205	1	Gage Oil Assembly				
③314	650873	1	Screw, 1/4-20 X 3/4in				
③315	611111	1	Alternator Coil ASM (18 Watt)(Incl. Ref. #322)				
③323	611118	1	Terminal				
③325	29443	1	Clip-Wire				
③328	35062	2	Key-Ignition				
①③329	610973	1	Terminal				
③335	36547	1	Cover-Carburetor				
③336	650765	1	Screw, 10-32 X 1/2in				
③338	28942	2	Screw, 10-32 X 3/8in				
③340	34154	1	Bracket-Tank, Fuel				
③341	34155	1	Bracket-Tank, Fuel				
③342	650561	1	Screw, 1/4-20 X 5/8in				



Rewind Starter Assembly No. 590749 Tecumseh HMSK-80 155724X

Ref	Part No.	Qty.	Description				
1	590599A	1	Spring Pin ASM				
2	590600	1	Washer				
3	590679	1	Retainer				
4	590601	1	Washer				
5	590678	1	Spring-Brake				
6	590680	2	Dog-Starter				
7	590412	2	Spring-Dog				
8	590682	1	Pulley And Rewind Spring ASM				
11	590750A	1	Starter Housing ASM				
12	590535	1	Rope-Starter (98in X 9/64in Diameter)				
13	590574	1	Handle-Mitten Grip (Not Included With Starter)				

NOTES

NOTES

NOTES

