



Brake Light Kit

Groundsmaster® 580-D

Part No. 108-8080

Form No. 3353-533 Rev A

Installation Instructions

This kit is for use only on the Groundsmaster 580-D, Model 30582 when equipped with a Road Light Kit, Model No. 30613.

1. Position the machine on a level surface, lower the cutting units, stop the engine, engage the parking brake and remove the key from the ignition.
2. Unlatch, raise and secure hood with prop rod. Unlatch and remove the left side panel.
3. Remove capscrews securing the battery tray and slide the tray out.
4. Remove the negative (-) battery cable connections from both batteries.

⚠
Warning
⚠

Wear safety goggles and rubber gloves when working with batteries. Since the gases are explosive, keep open flames and electrical spark away from batteries. Do not smoke.

Mount the Light Arms

1. Mount a 2" red reflector to the end of each light arm with a #10-24 x 1/2" lg. machine screw and a Keps nut (Fig. 1).
2. Mount a 3" red reflector to the front of each light arm with (2) #10-24 x 1/2" lg. machine screws and Keps nuts (Fig. 1).
3. In the front of each light arm, install a rubber grommet in each tail light mounting hole (Fig. 1).
4. Install a tail light into each grommet (Fig. 1).
5. Mount a left or right light mount bracket to the rear of the frame with (4) 3/8-16 x 1" lg. flange head screws, 3/8" lockwashers and 3/8" hex nuts (Fig. 1).

Note: The bracket is to be positioned with the upper mounting holes to the rear.

6. Mount each light arm to a bracket with (2) 3/8-16 x 3-3/4" lg. flange head screws, 3/8" lockwashers and 3/8" hex nuts (Fig. 1).

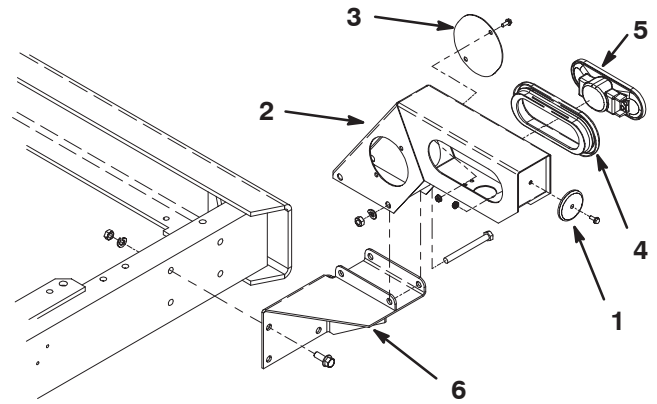


Figure 1

- | | |
|---------------------|------------------------|
| 1. 2" Red reflector | 4. Rubber grommet |
| 2. Light arm | 5. Tail light |
| 3. 3" Red reflector | 6. Light mount bracket |

Mount the Brake Light Relay

1. Remove the center nut securing the electronic controller to the machine (Fig. 2).

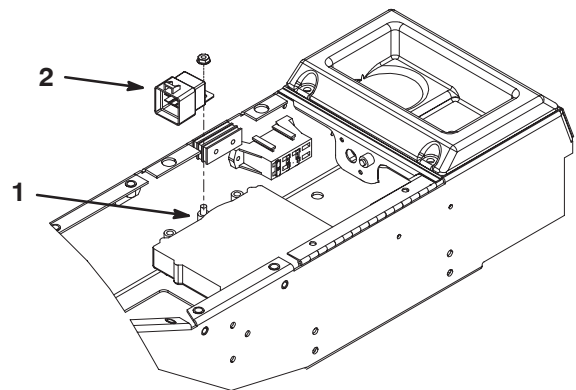


Figure 2

- | | |
|--------------------------|----------------------|
| 1. Electronic controller | 2. Brake light relay |
|--------------------------|----------------------|

2. Mount the brake light relay to the controller with the nut removed. Position the relay as shown in figure 2.

Connect the Wire Harness

1. Connect the right hand brake light harness connector to the right hand taillight assembly connector (Fig. 6).
2. Connect the left hand brake light harness connector to the left hand taillight assembly connector (Fig. 6).
3. Install a cable tie through the holes in each arm and secure the harness to the arms.
4. Insert cable ties through the holes in the rear bumper and secure the taillight wire harness to the bumper (Fig. 3).

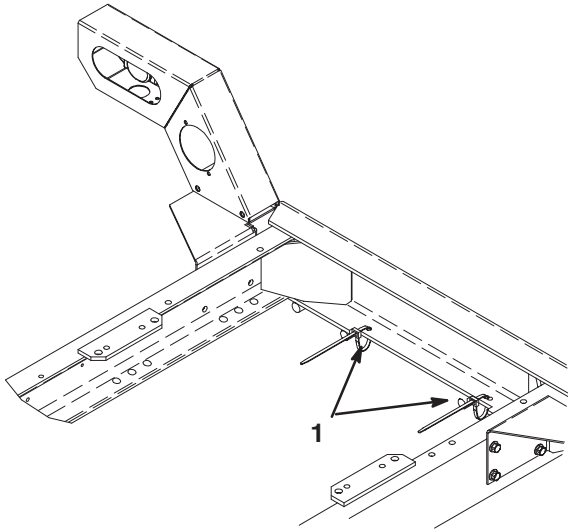


Figure 3

1. Cable tie locations in rear frame

Note: An auxiliary lead with a connector is included on the harness for connection to a license plate light, if required (Fig. 6).

5. Route the wire harness forward along the right frame channel to the engine.
6. Remove the grounding bolt securing the battery cable to the right side of the engine block.
7. Using the bolt, secure the wire harness ground wire ring terminal (Fig. 6) and the battery cable to the engine.
8. Loosen the (2) screws on the brake switch (Fig. 4). The switch is located rear of the brake fluid reservoirs.
9. Connect the (2) fork terminals from the wire harness (Fig. 6) to the mounting screws on the brake switch. Tighten the screws.

Important When routing the harness, do not pull it across sharp edges which may damage the wires. Wires must not contact any hot or moving parts. Secure the wire harness with wire ties.

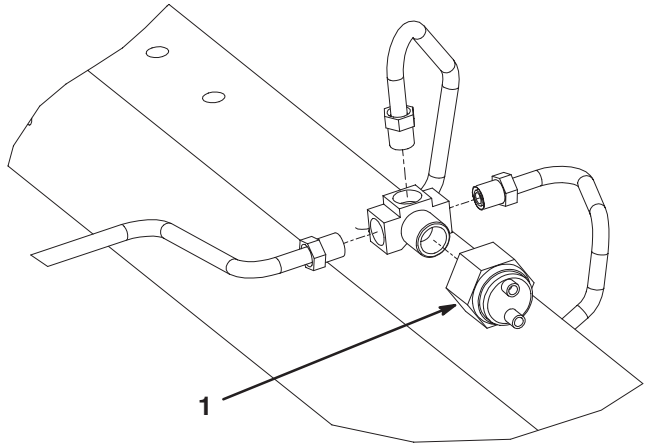


Figure 4

1. Brake switch

10. Route the wire harness to the brake light relay (Fig. 2).
11. Plug the wire harness connector into the brake light relay (Fig. 6).
12. Plug the spade connector from the wire harness into an available connector from the fuse block.
13. Plug the spade connector from the wire harness into the covered connector on the road light switch. The switch is labeled brake light.

Note: If there is not a connector on the road light switch, clamp the Terminal-T-Tap (included in kit) onto the yellow wire and plug into that (Fig. 5).

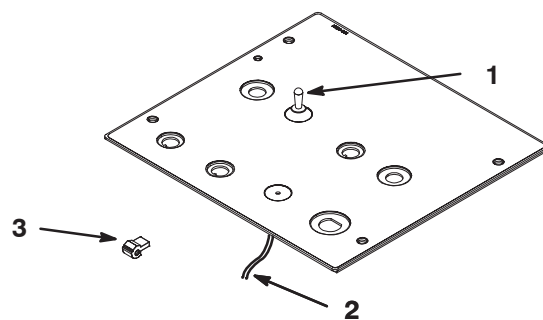


Figure 5

1. Road light switch
2. Yellow wire
3. Terminal-T-Tap

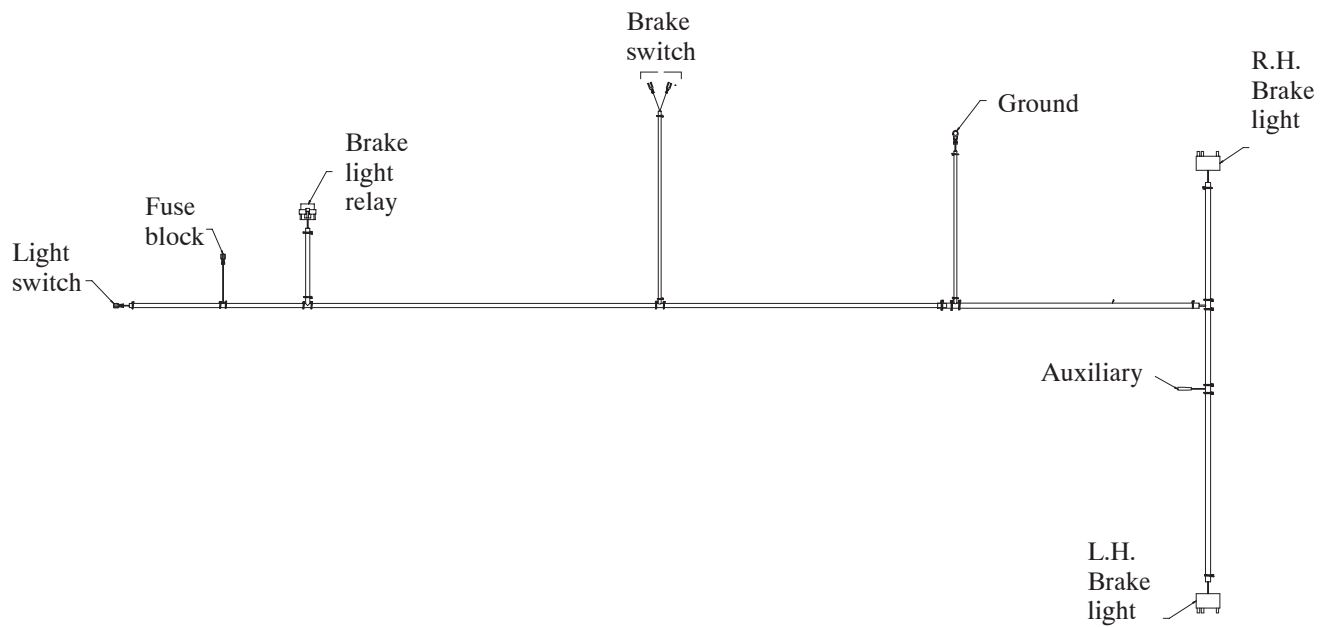


Figure 6

Install the Fuse Decal

Affix the fuse decal to the corresponding location on the fuse block decal (Fig. 7). Make sure the decal surface is clean and dry before affixing the decals.

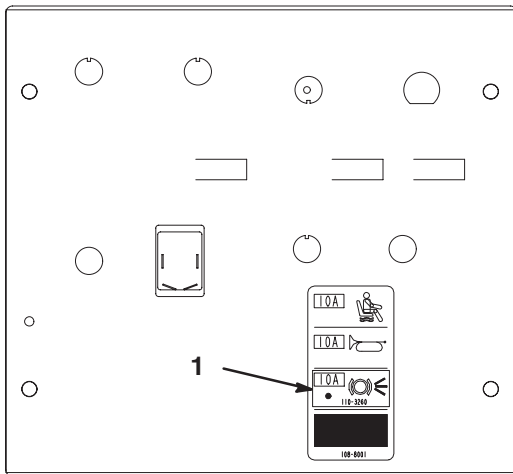


Figure 7

1. Fuse decal

Install the Fuse

Install the 10 Amp fuse into the corresponding slot in the fuse block (Fig. 8).

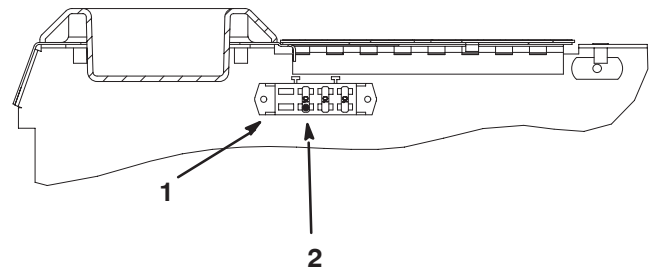


Figure 8

1. Fuse block

2. Fuse

Inspection and Checks

- Carefully retrace the harness and components and inspect for possible loose connections, harness interference with other machine components, etc. Add cable ties where needed to necessary corrections.
- Reconnect the negative (-) battery leads to the batteries and check the system for proper function.

Brake Light Functions

With the road light switch turned on and when the service brake is depressed, the brake lights will illuminate.

Electrical Schematic

