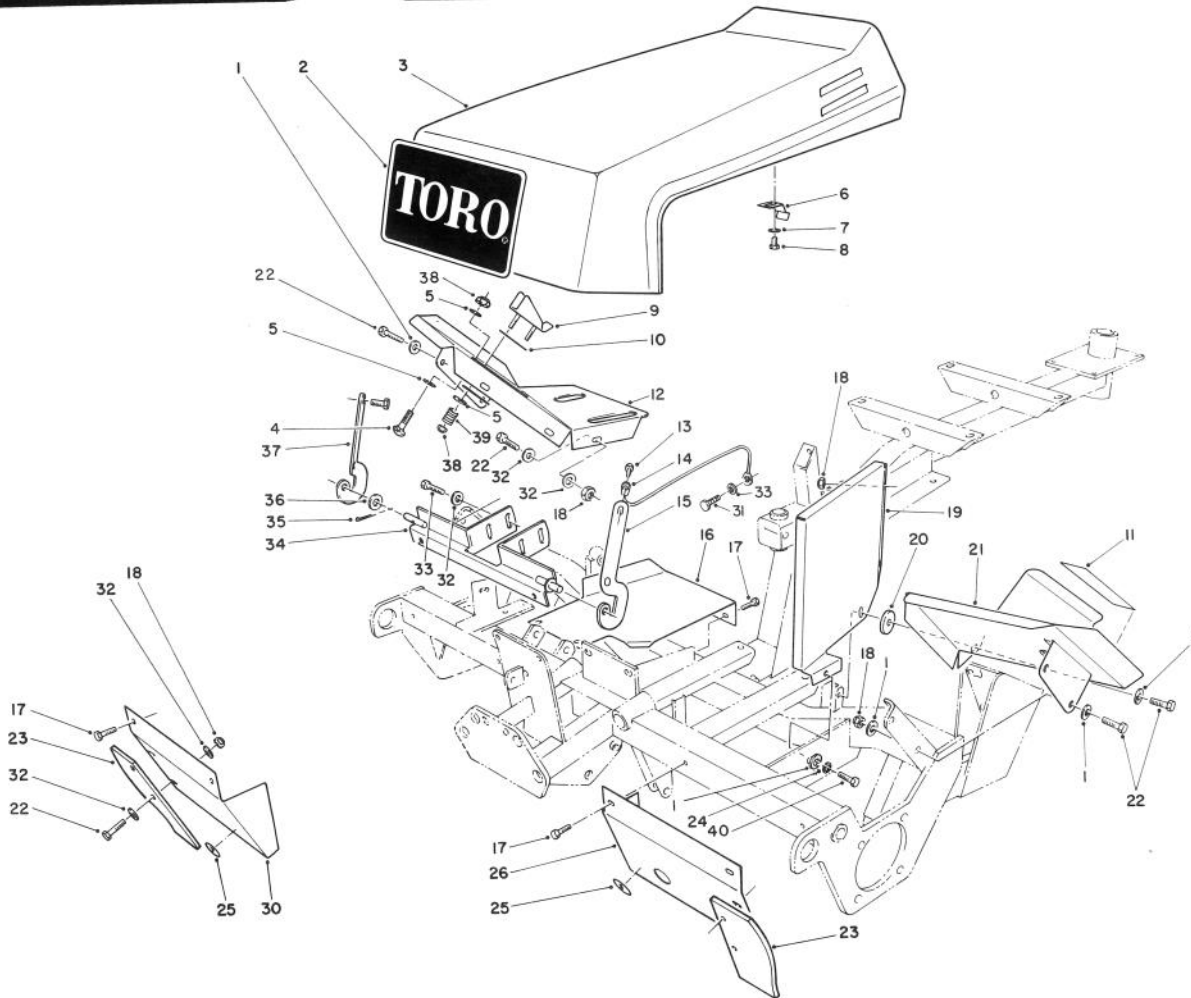


MODEL NO. 03410-70691 & UP

**PARTS
CATALOG**

REELMASTER® 216

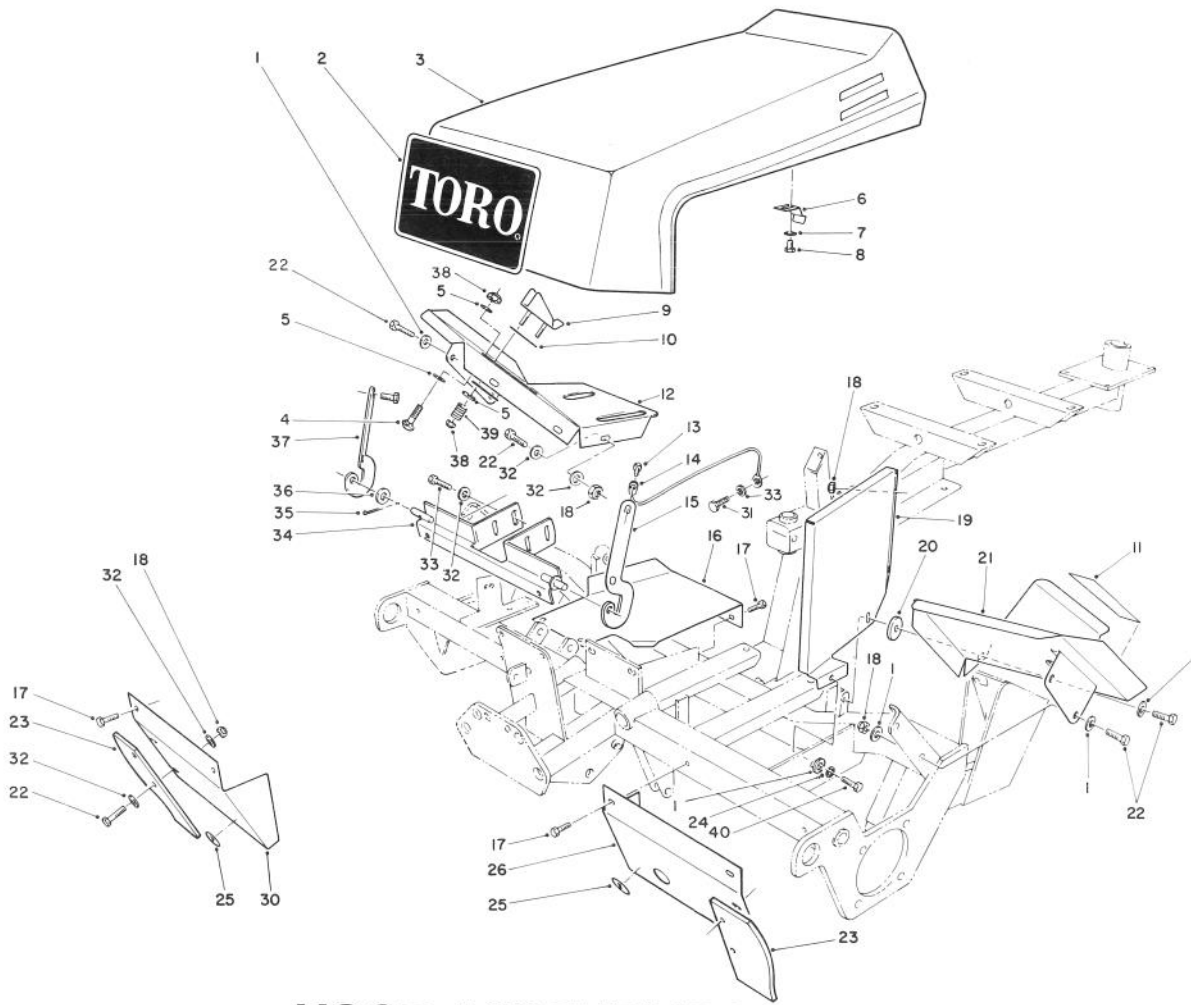


I.12.914.8

HOOD ASSEMBLY

Ref. No.	Part No.	Description	No. Used
1	3256-56	Washer - Flat	9
2	62-7400	Decal - TORO Logo	1
3	62-5400	Hood Assembly	1
4	3229-1	Bolt - Carriage	1
5	3256-22	Washer - Flat	4
6	62-5010	Latch - Hood	1
7	3256-14	Washer - Flat	2
8	32104-77	Screw - Hex. Hd. Self Tap	2
9	62-7320	Stop - Traction Pedal	1
10	62-7350	Slide - Pedal Stop	2
11	62-7280	Decal - Brake	1
12	62-7210	Footrest R.H.	1
13	32144-22	Screw - Hex. Hd. Self Tap	4
14	62-7310	Cable - Hood Stop	1
15	28-0120	Bracket - Hinge (L.H.)	1

Ref. No.	Part No.	Description	No. Used
16	61-2960	Shield - Bottom Grass	1
17	32104-82	Screw - Hex. Hd. Self Tap	9
18	3296-29	Nut - Lock	13
19	62-5210	Cover - Belt	1
20	62-7190	Spacer	1
21	61-2700	Footrest L.H.	1
22	322-5	Screw - Cap Hex. Hd.	14
23	62-5000	Deflector - Grass	2
24	3253-4	Washer - Lock	1
25	58-6520	Decal - Grease Fitting	2
26	61-2970	Shield - Front Grass (L.H.)	1
30	61-2980	Shield - Front Grass (R.H.)	1
31	321-5	Screw - Cap Hex. Hd.	1
32	3256-23	Washer - Flat	18
33	3253-3	Washer - Lock	1

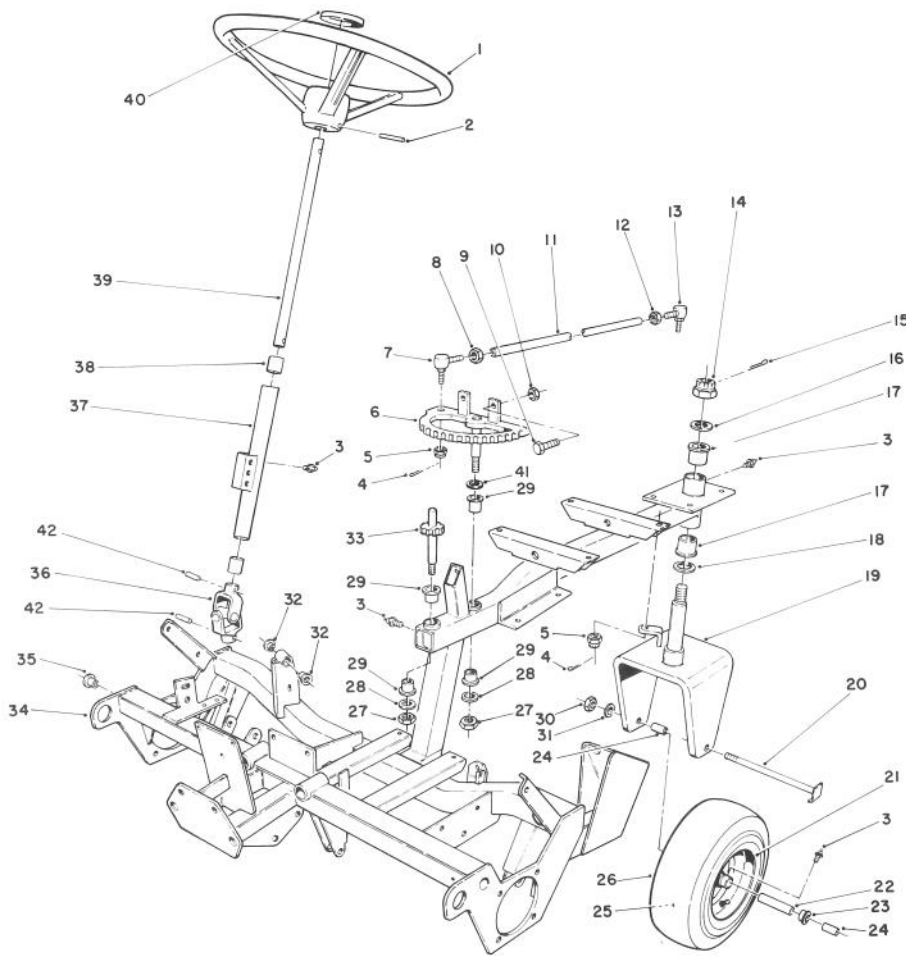


I.12 914 8

HOOD ASSEMBLY (Continued)

Ref. No.	Part No.	Description	No. Used
34	61-3010	Support - Hood & Grille	1
35	3272-5	Pin - Cotter	1
36	3256-24	Washer - Flat	1
37	28-0130	Bracket - Hinge (R.H.)	1

Ref. No.	Part No.	Description	No. Used
38	3296-16	Nut - Lock	3
39	10-4850	Spring - Compression	2
40	322-3	Screw - Cap Hex. Hd.	3

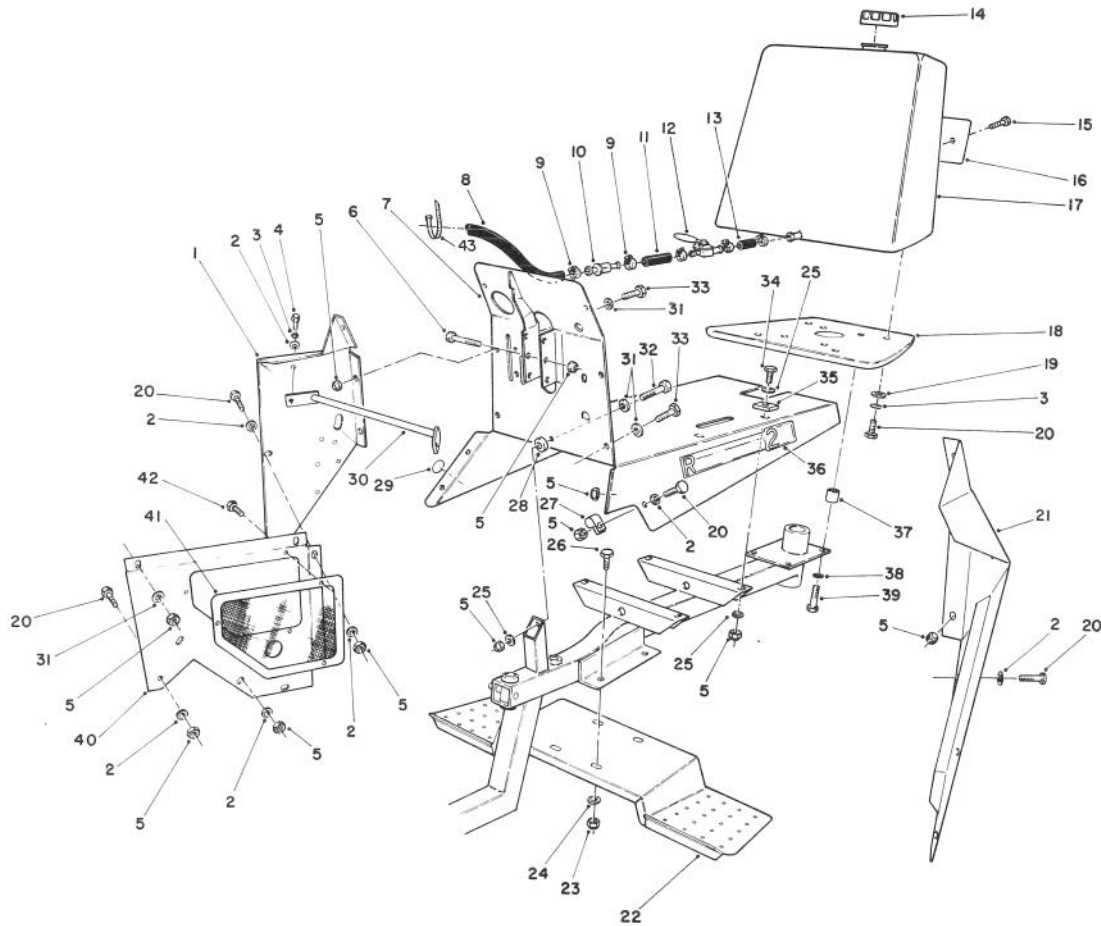


112 914 1

FRAME AND STEERING ASSEMBLY

Ref. No.	Part No.	Description	No. Used
1	25-6260	Wheel - Steering (Incl. Ref. #40)	1
2	32121-10	Pin - Roll	1
3	302-5	Fitting - Grease	5
4	3272-7	Pin - Cotter	2
5	32136-4	Nut - Hex. Slotted	2
6	61-2040	Rack Assembly	1
7	21-0140	Balljoint - R.H. (Incl. Ref. #5)	1
8	3220-5	Nut - Jam (R.H.)	1
9	323-7	Screw - Cap Hex. Hd.	2
10	3218-3	Nut - Lock	2
11	61-2070	Tube - Steering	1
12	3220-12	Nut - Jam (L.H.)	1
13	21-0150	Balljoint - L.H. (Incl. Ref. #5)	1
14	32136-9	Nut - Hex. Slotted	1
15	3272-30	Pin - Cotter	1
16	61-2000	Washer	1
17	256-245	Bushing - Flange	2
18	61-1990	Washer	1
19	61-1900	Castor Fork Assy.	1
20	61-1960	Axle - Castor	1
21	242-79	Rim - Wheel	1

Ref. No.	Part No.	Description	No. Used
22	61-3520	Spacer - Bearing	1
23	251-210	Bearing - Wheel	2
24	61-1980	Spacer - Rear Axle	2
25	232-47	Tube - Inner	1
26	231-122	Tire	1
27	3296-28	Nut - Lock	2
28	3256-26	Washer	2
29	256-117	Bushing - Flange	4
30	3296-51	Nut - Lock	1
31	3256-28	Washer - Flat	1
32	256-287	Bushing - Flange	2
33	61-2010	Pinion	1
34	61-1400	Frame Assy. (Incl. Ref. #3, 17, 29, 32 & 35)	1
35	256-247	Bushing - Flange	2
36	61-3360	Joint - Universal	1
37	61-2090	Column - Steering (Incl. Ref. #3 & 38)	1
38	256-27	Bearing - Sleeve	2
39	61-2080	Shaft - Steering	1
40	24-2090	Cap - Steering Wheel	1
41	3-6498	Washer	1
42	32121-15	Pin - Roll	2



I.12.914.7

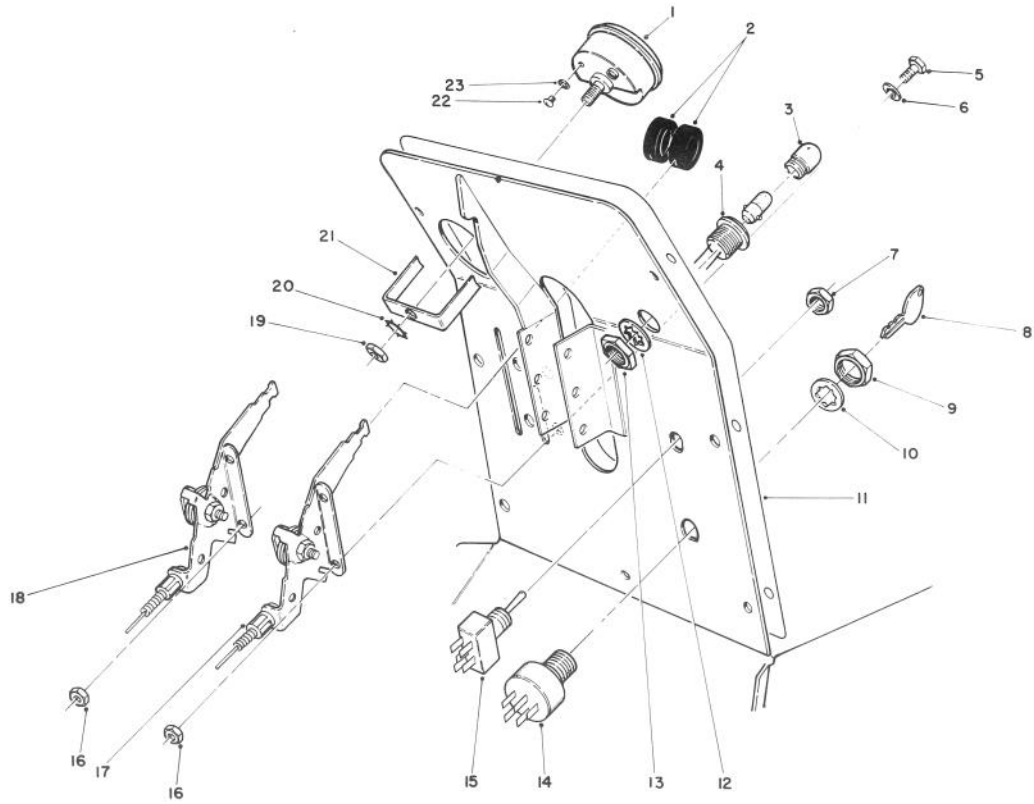
FUEL TANK ASSEMBLY

Ref. No.	Part No.	Description	No. Used
1	61-3880	Panel - Access R.H.	1
2	3256-23	Washer - Flat	12
3	3253-4	Washer - Lock	6
4	322-2	Screw - Cap Hex. Hd.	2
5	3296-29	Nut - Lock	24
6	322-12	Screw - Cap Hex. Hd.	1
7	61-3580	Panel - Instrument	1
8	47-2988	Hose - Fuel	1
9	2412-36	Clamp - Hose	6
10	38-8000	Filter - Fuel	1
11	47-2980	Hose - Fuel	1
12	61-3550	Valve - Ball	1
13	56-2230	Hose - Fuel	1
14	55-3570	Cap - Fuel	1
15	3290-470	Screw	2
16	61-3310	Plate - TORO Logo	1
17	61-0030	Tank - Fuel	1
18	61-2680	Weight - 5 Bld.	1
*	62-5140	Weight - 8 Bld. (Optional)	1
19	3256-2	Washer - Flat	4
20	322-3	Screw - Cap Hex. Hd.	13
21	62-5370	Panel - Access L.H.	1

Ref. No.	Part No.	Description	No. Used
22	61-3700	Step - Foot	1
23	3296-39	Nut - Lock	4
24	3256-4	Washer - Flat	4
25	3256-3	Washer - Flat	9
26	323-7	Screw - Cap Hex. Hd.	4
27	2412-71	Clamp - R	1
28	62-7170	Spacer	1
29	58-6520	Decal - Grease Fitting	1
30	62-5330	Bracket - Side Panel	1
31	3256-70	Washer - Flat	9
32	322-45	Screw - Cap Hex. Hd.	1
33	322-43	Screw - Cap Hex. Hd.	6
34	322-6	Screw - Cap Hex. Hd.	4
35	62-7200	Spacer	4
36	61-3840	Decal - Reelmaster 216	2
†37	61-2220	Spacer	4
38	3253-21	Washer - Lock	4
39	323-9	Screw - Cap Hex. Hd.	4
40	61-3460	Support - Hydraulic Tank	1
41	61-3450	Screen - Support	1
42	32104-76	Screw - Self Tapping	3
43	3290-379	Tie - Cable	4

†Use with 5 blade cutting units only.

*Not Illustrated

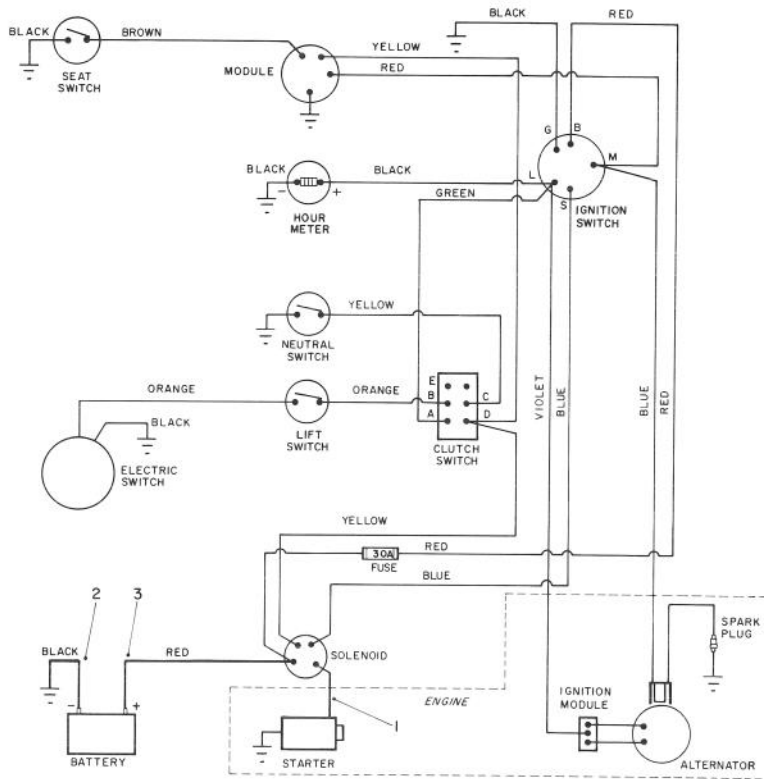


I.12.914.13

INSTRUMENT PANEL ASSEMBLY

Ref. No.	Part No.	Description	No. Used
1	12-9990	Meter - Hour (Incl. Ref. #19-23)	1
2	233-35	Knob	2
3	218-562	Lens	1
4	44-2212	Lamp - Pilot (Incl. Ref. #3, 12-13)	1
5	321-39	Screw - Cap Hex. Hd.	4
6	3256-1	Washer - Flat	4
7	218-500	Nut	1
8	218-412	Key (Set of 2)	1
9	218-416	Nut	1
10	3254-5	Washer - Lock	1
11	62-7270	Decal - Instrument Panel	1
12	218-536	Washer - Lock	1

Ref. No.	Part No.	Description	No. Used
13	218-535	Nut	1
14	23-0660	Switch - Key (Incl. Ref. #8-10)	1
15	37-2610	Switch - Clutch (Incl. Ref. #7)	1
16	3296-42	Nut - Lock	4
17	61-2630	Control - Choke	1
18	61-2640	Control - Throttle	1
19	3217-26	Nut - Hex.	1
20	3254-1	Washer - Lock	1
21	218-515	Bracket - Mounting	1
22	3250-15	Screw - Pan Hd.	2
23	3254-10	Washer - Lock	2



KEY SWITCH
 OFF G B M
 RUN B & L
 START B & S

CLUTCH SWITCH
 OFF B B E, C & D
 ON A B B

SEAT SWITCH N.O.
 CLOSED BY SEATED
 OPERATOR

NEUTRAL SWITCH N.O.
 CLOSED IN NEUTRAL

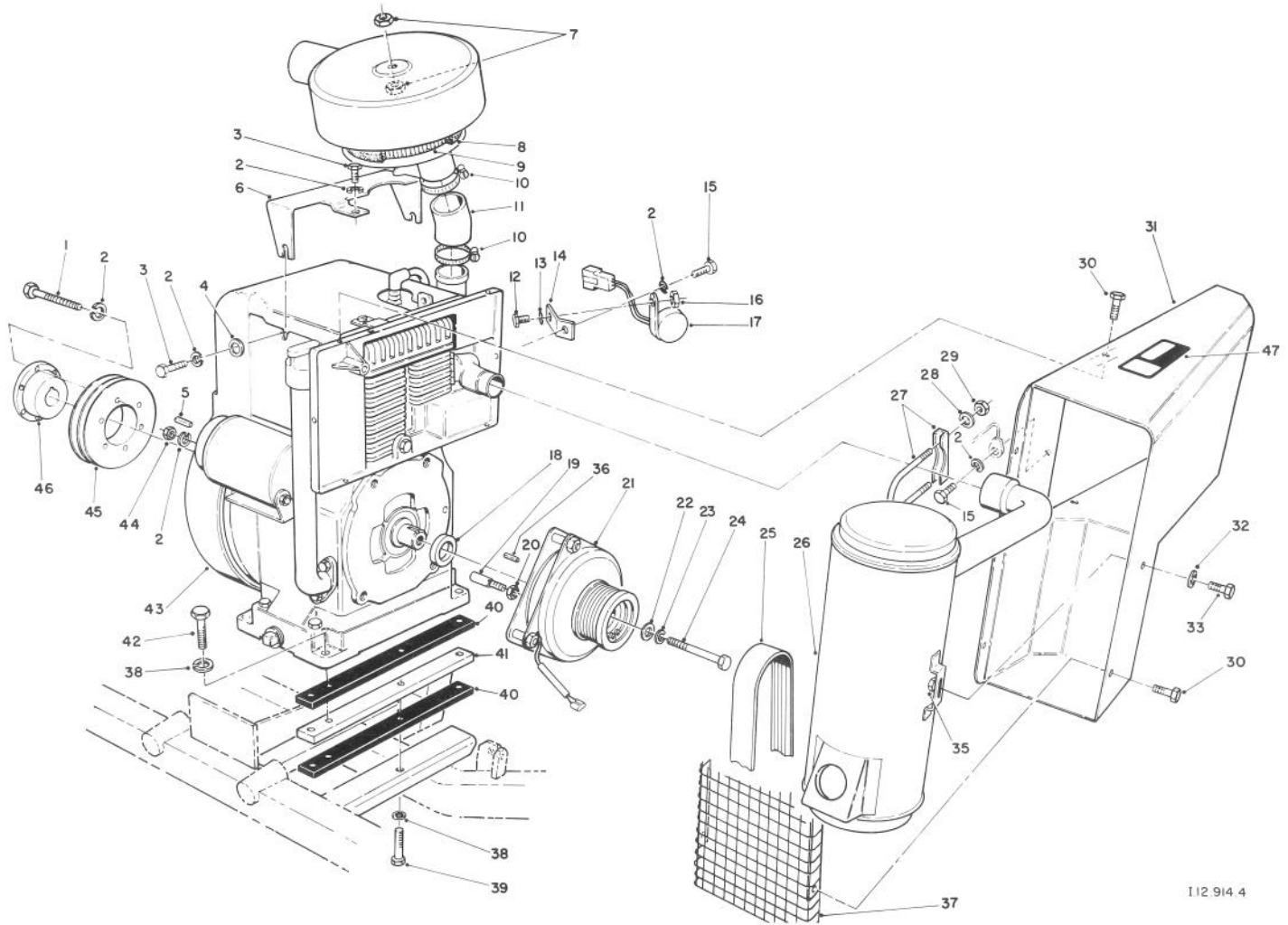
LIFT SWITCH N.O.
 CLOSED WHEN CYL.
 IS RETRACTED

ELECTRICAL SCHEMATIC

Ref. No.	Part No.	Description	No. Used
1	61-2660	Wire - Solenoid/Starter	1
2	61-2670	Wire - Ground	1

Ref. No.	Part No.	Description	No. Used
3	10-7130	Wire - Battery/Solenoid	1
*	61-2650	Wire Harness Assembly	1

*Not Illustrated

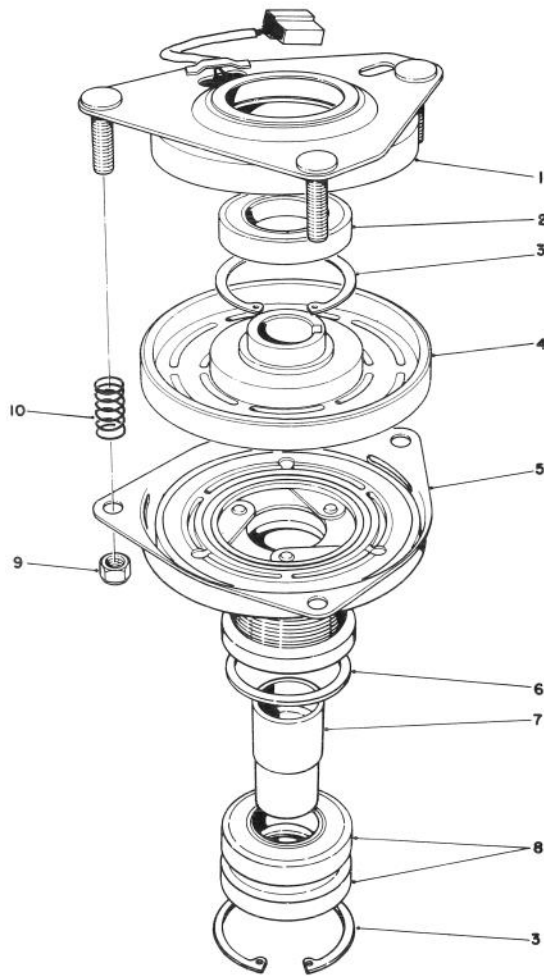


I12 914 4

ENGINE & CLUTCH ASSEMBLY

Ref. No.	Part No.	Description	No. Used
1	321-13	Screw - Cap Hex. Hd.	3
2	3253-3	Washer - Lock	9
3	321-4	Screw - Cap Hex. Hd.	3
4	3256-1	Washer - Flat	2
5	10-7070	Key - Square	1
6	61-2120	Bracket - Air Cleaner	1
7	3296-56	Nut - Lock	2
8	2210-281	Precleaner - Air Cleaner	1
9	2210-283	Element - Air Cleaner	1
10	2412-92	Clamp - Hose	2
11	61-3470	Hose	1
12	321-5	Screw - Cap Hex. Hd.	1
13	3255-7	Washer - Lock	1
14	61-3590	Strap - Ground	1
15	321-5	Screw - Cap Hex. Hd.	2
16	3296-16	Nut - Lock	1
17	59-9810	Module - Ignition	1
18	3-6558	Spacer - Clutch	1
19	61-2170	Stop - Clutch	1
20	3218-3	Nut - Jam	1
21	61-0050	Clutch Assembly	1
22	44-8160	Washer - Flat	1
23	3253-6	Washer - Lock	1
24	3212-14	Screw - Cap Hex. Hd.	1
25	61-3390	Belt - Poly-V	1

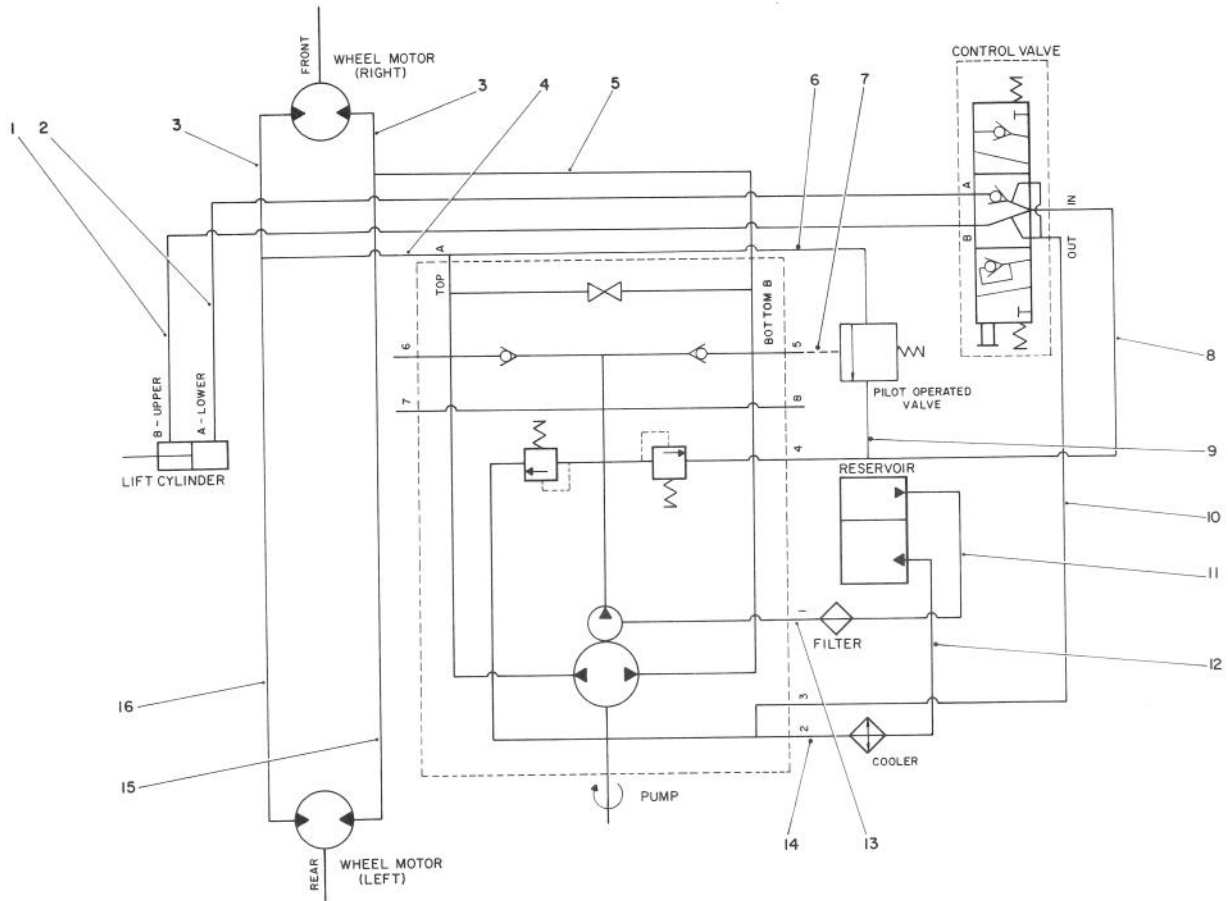
Ref. No.	Part No.	Description	No. Used
26	61-0040	Muffler	1
27	2112-9	Clamp - Muffler (Incl. Ref. #28-29)	1
28	3253-4	Washer - Lock	2
29	3217-6	Nut - Hex.	2
30	12-3270	Screw - Cap Hex. Hd.	8
31	61-0020	Shroud - Muffler	1
32	3256-70	Washer - Flat	2
33	322-46	Screw - Cap Hex. Hd.	2
35	32149-12	Nut - Lock	2
36	18-6430	Key - Square	1
37	62-7390	Grille - Heat Shield	1
38	3253-5	Washer - Lock	8
39	323-46	Screw - Cap Hex. Hd.	4
40	62-7150	Spacer - Rubber	4
41	62-7140	Spacer - Engine	2
42	323-43	Screw - Cap Hex. Hd.	4
43		Engine - Kohler Model No. M16 Spec. No. 711526	1
44	3218-1	Nut - Hex.	1
45	61-3330	Pulley - Engine	1
46	61-3340	Bushing - Taper (Incl. Ref. #1-2)	1
47	62-7290	Decal - Hot	1



ELECTRIC CLUTCH ASSEMBLY NO. 61-0050

Ref. No.	Part No.	Description	No. Used
1	44-8350	Field Assembly (Incl. Ref. #2 & 3)	1
2	251-292	Bearing - Field	1
3	44-8310	Ring - Retaining	2
4	44-8360	Field Coil, Rotor & Bearing Assembly (Incl. Ref. #1)	1

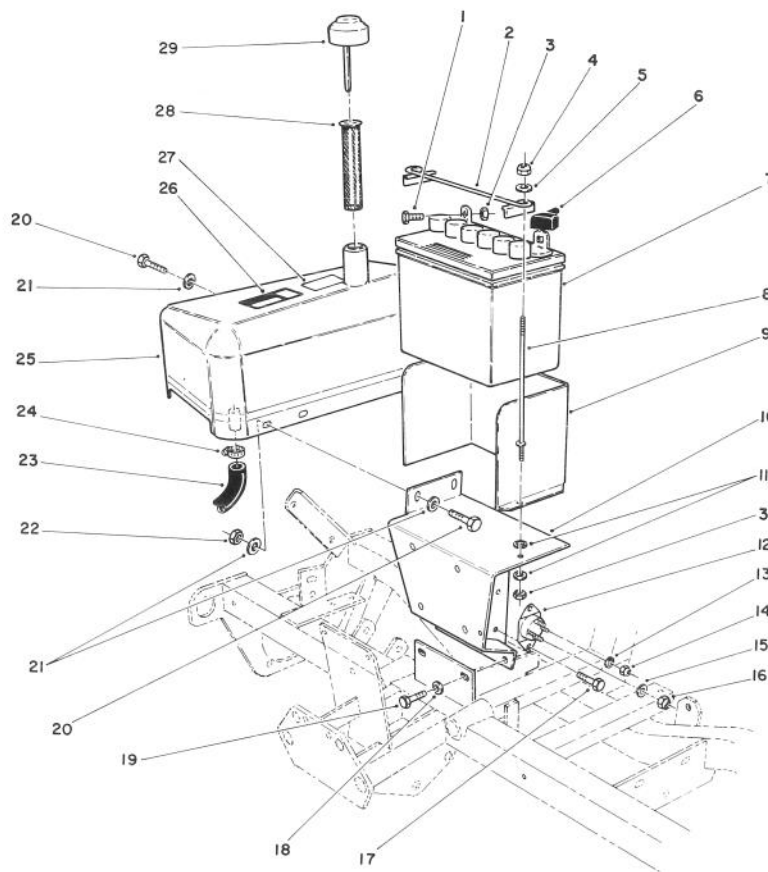
Ref. No.	Part No.	Description	No. Used
5	62-5250	Armature & Pulley Assy. (Incl. Ref. 3, 6, 7 & 8)	1
6	44-8330	Spacer - Pulley Bearing	1
7	62-5260	Collar - Bearing	1
8	251-291	Bearing - Pulley	2
9	3296-6	Nut - Lock	3
10	44-8320	Spring - Compression	3



HYDRAULIC SCHEMATIC

Ref. No.	Part No.	Description	No. Used
1	61-2500	Hydraulic Hose Assembly	1
2	61-2490	Hydraulic Hose Assembly	1
3	61-3060	Tube - Hydraulic R.H.	2
4	61-3130	Hydraulic Hose Assembly (Front/Top)	1
5	61-3140	Hydraulic Hose Assembly (Rear/Bottom)	1
6	63-4870	Hose - Hydraulic	1
7	63-4890	Hose - Hydraulic	1
8	61-2520	Hydraulic Hose Assembly (Upper)	1

Ref. No.	Part No.	Description	No. Used
9	63-4880	Hose - Hydraulic	1
10	61-2510	Hydraulic Hose Assembly (Lower)	1
11	61-2550	Hose - Hydraulic	1
12	61-2560	Hose - Hydraulic	1
13	61-2540	Hose - Hydraulic	1
14	63-5170	Hose - Hydraulic	1
15	61-3070	Tube - Hydraulic L.H. Rear	1
16	61-3080	Tube - Hydraulic L.H. Front	1

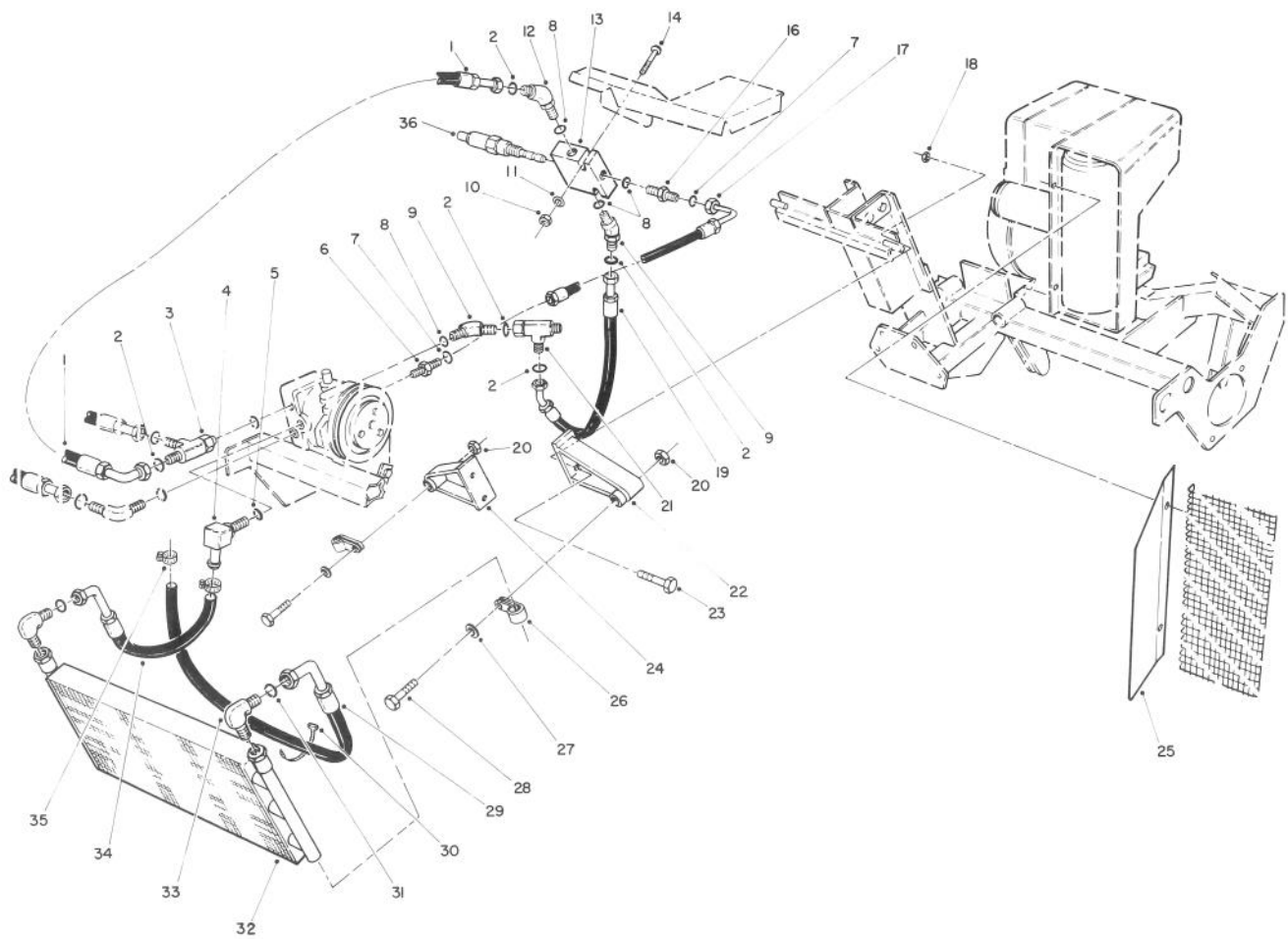


I.12.914.6

HYDRAULIC TANK & BATTERY ASSEMBLY

Ref. No.	Part No.	Description	No. Used
1	322-3	Screw - Cap Hex. Hd.	2
2	7-0534	Battery Clamp Assy	1
3	3217-6	Nut - Hex.	2
4	3296-16	Nut - Lock	2
5	3256-1	Washer - Flat	2
6	28-8080	Boot - Battery Terminal	1
7	28-1400	Battery - 12 Volt (Optional)	1
8	10-8120	Bolt - Battery	2
9	61-2820	Shield	1
10	61-2380	Battery Support W.A.	1
11	3254-8	Washer - Lock	2
12	28-4210	Solenoid - Starter	1
13	3254-1	Washer - Lock	2
14	3219-14	Nut - Hex.	2
15	3253-4	Washer - Lock	2

Ref. No.	Part No.	Description	No. Used
16	3218-13	Nut - Lock	2
17	32104-17	Screw - Hex. Hd. Self Tap	2
18	3253-21	Washer - Lock	2
19	323-6	Screw - Cap Hex. Hd.	2
20	322-43	Screw - Cap Hex. Hd.	4
21	3256-70	Washer - Flat	6
22	3296-29	Nut - Lock	2
23	63-5180	Hose - Hydraulic	1
24	2412-34	Clamp - Hose	2
25	61-0100	Tank - Hydraulic	1
26	62-7290	Decal - Hot	1
27	58-6530	Decal - Oil	1
28	61-2790	Screen - Filler	1
29	61-2800	Cap & Dipstick Assembly	1
30	32149-2	Nut - Hex.	2

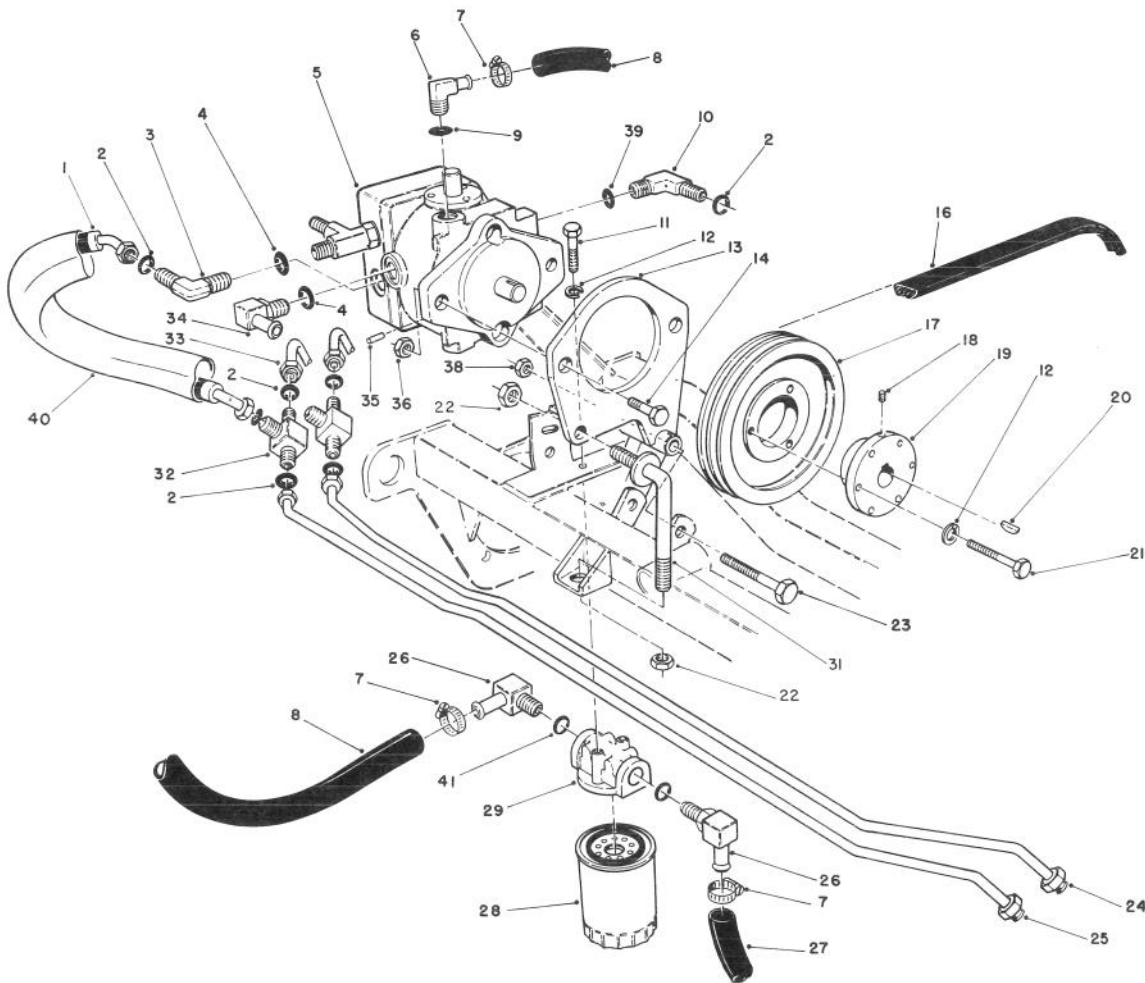


HYDRAULIC OIL COOLER ASSEMBLY

Ref. No.	Part No.	Description	No. Used
1	63-4870	Hydraulic Hose Assembly	1
2	237-30	Seal - O-Ring	5
3	340-109	Fitting - Male Tee (Incl. Ref. #2)	1
4	353-954	Fitting - 90° Hose Elbow (Incl. Ref. #5)	1
5	237-79	Seal - O-Ring	1
6	340-107	Fitting - Straight (Incl. Ref. #7)	1
7	237-150	Seal - O-Ring	2
8	237-22	Seal - O-Ring	4
9	340-96	Fitting - 45° Elbow (Incl. Ref. #2 & 8)	2
10	3296-16	Nut - Hex.	2
11	3256-22	Washer - Flat	2
12	63-8770	Fitting - 45° Orifice (Incl. Ref. #2 & 8)	1
13	63-5080	Valve Assy. (Incl. Ref.#36)	1
14	321-11	Screw - Cap Hex. Hd.	2
15	3229-1	Bolt - Carriage	1
16	340-1	Fitting - Straight (Incl. Ref. #7 & 8)	1
17	63-4890	Hydraulic Hose Assembly	1

Ref. No.	Part No.	Description	No. Used
18	3296-29	Nut - Hex.	4
19	63-4880	Hydraulic Hose Assembly	1
20	3296-39	Nut - Hex.	2
21	340-104	Fitting - Male/Female Tee (Incl. Ref. #2)	1
22	63-5340	Bracket - Cooler L.H.	1
23	322-4	Screw - Cap Hex. Hd.	4
24	63-5350	Bracket - Cooler R.H.	1
25	63-8940	Shield - Cooler	1
26	2412-39	Clamp - R	2
27	3256-24	Washer - Flat	2
28	323-10	Screw - Cap Hex. Hd.	2
29	63-5180	Hydraulic Hose Assembly	1
30	3290-378	Tie - Cable	2
31	237-151	Seal - O-Ring	2
32	63-5400	Exchanger - Heat	1
33	340-108	Fitting - 90° Male Elbow (Incl. Ref. #31)	2
34	63-5170	Hydraulic Hose Assembly	1
35	2412-34	Clamp - Hose	2
36	63-8790	Valve - Pressure Sequence	1
*	63-8800	Seal Kit - Pressure Valve	1
*	56-7982	Sleeve - Protective	1

*Not Illustrated



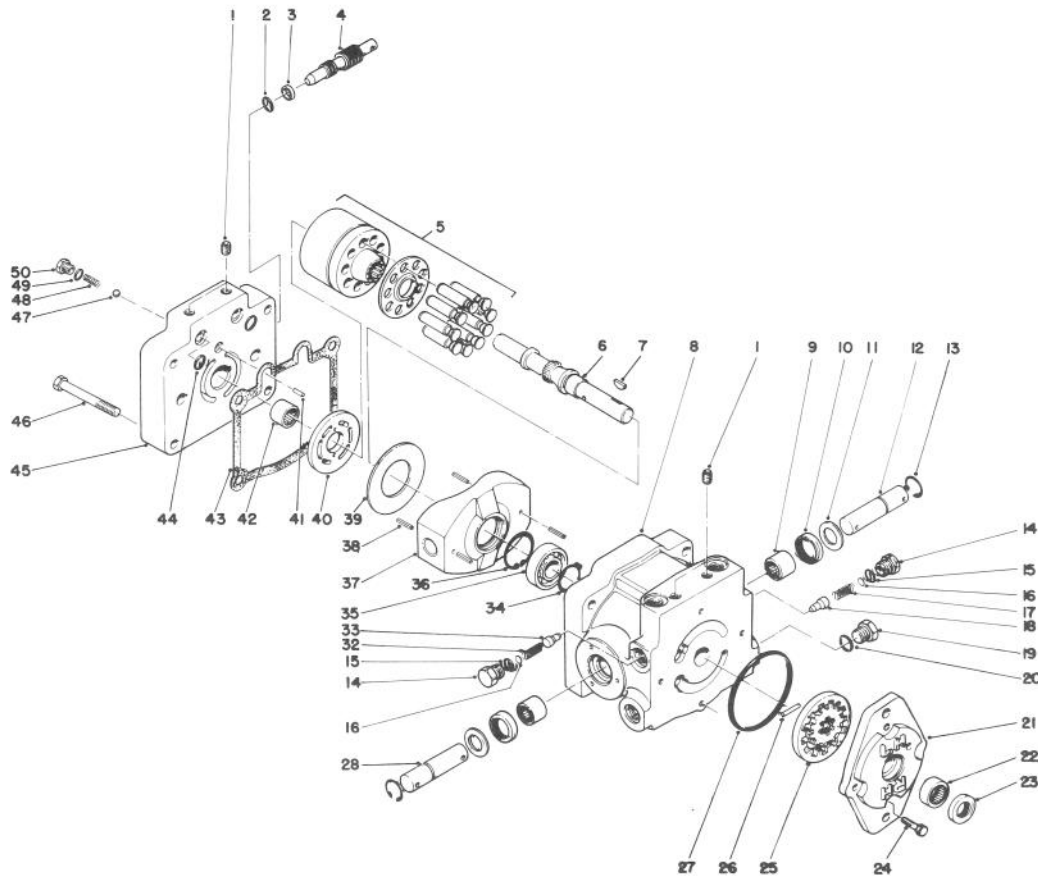
I.12.914.3

HYDRAULIC DRIVE ASSEMBLY

Ref. No.	Part No.	Description	No. Used
1	61-3130	Hydraulic Hose (Front/Top)	1
*	61-3140	Hydraulic Hose (Rear/Btm)	1
2	237-30	O-Ring	10
3	340-98	Fitting - 90° Elbow (Incl. Ref. #2 & 4)	1
4	237-79	O-Ring	2
5	61-0080	Pump Assembly (Incl Ref. #20)	1
6	61-2710	Fitting - 90° Hose Elbow (Incl. Ref. #9)	1
7	2412-3	Clamp - Hose	4
8	61-2540	Hose - Hydraulic	1
9	237-80	O-Ring	1
10	340-96	Fitting - 45° Elbow (Incl. Ref. #2 & 39)	3
11	321-4	Screw - Cap Hex. Hd.	2
12	3253-3	Washer - Lock	5
13	61-2230	Plate - Pump Mount	1
14	325-7	Screw - Cap Hex. Hd.	2
16	61-3400	V-Belt - Pump	1
17	61-3320	Pulley - Pump	1
18	3245-9	Screw - Set	1
19	61-3350	Bushing - Taper (Incl. Ref. #12, 18 & 21)	1

Ref. No.	Part No.	Description	No. Used
20	3257-32	Key - Woodruff	1
21	321-13	Screw - Cap Hex. Hd.	3
22	3296-39	Nut - Lock	3
23	325-18	Screw - Cap Hex. Hd.	1
24	61-3080	Tube - Hyd. L.H. (Rear)	1
25	61-3070	Tube - Hyd. L.H. (Front)	1
26	23-8910	Fitting - 90° Hose Elbow (Incl Ref. #41)	2
27	61-2550	Hose - Hydraulic	1
28	54-0110	Filter - Oil	1
29	61-3770	Head - Filter	1
31	63-8820	Adjustment Rod Assembly	1
32	340-102	Fitting - Tee (Incl. Ref. #2)	2
33	61-3060	Tube - Hyd. R.H.	2
34	353-954	Fitting - 90° Hose Elbow (Incl Ref. #4)	1
35	32121-48	Pin - Roll	1
36	3296-25	Nut - Lock	2
38	3296-23	Nut - Lock	1
39	237-22	O-Ring	2
40	56-7982	Sleeve - Protective	3
41	237-117	O-Ring	2

*Not Illustrated

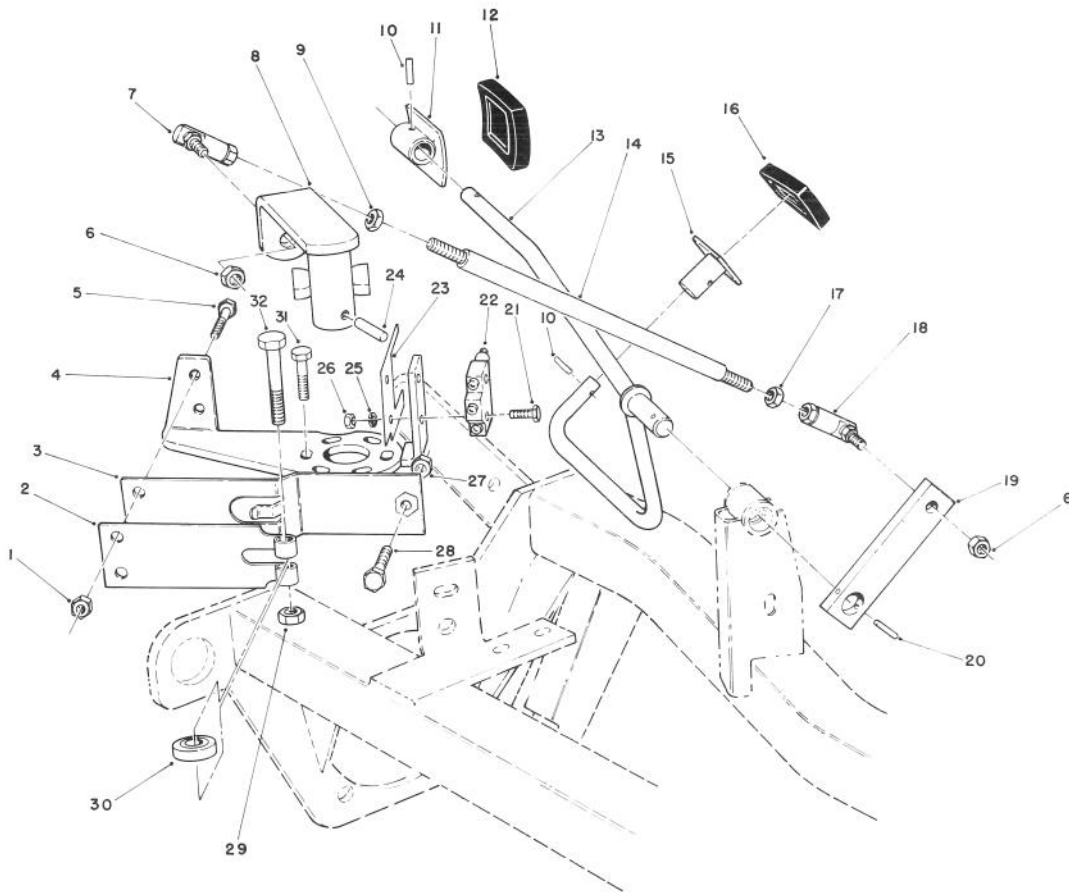


HYDRAULIC PUMP ASSEMBLY NO. 61-0080

Ref. No.	Part No.	Description	No. Used
1	285-17	Plug - Pipe	6
2	237-22	O-Ring	1
3	25-2630	Ring	1
4	25-2620	Valve - By-Pass	1
5	48-1800	Cylinder Block Kit	1
6		Shaft - Pump	1
7	3257-32	Key - Woodruff	1
8	61-0080	Hydraulic Pump Assembly (Complete)	1
9	252-82	Bearing - Needle	2
10	25-3210	Seal - Lip	2
11	25-2510	Washer	2
12	25-2580	Shaft - Trunnion	1
13	32151-46	Ring - Retaining	2
14	25-2460	Plug	2
15	237-86	O-Ring	2
16	25-2470	Kit - Shim Pack	2
17	25-2570	Spring - Relief Valve	1
18	25-2560	Cone - Relief Valve	1
19		Plug Assy. (Incl. Ref. #20)	1
20		O-Ring	1
21	25-2690	Housing - Charge Pump	1
22		Bearing - Needle	1
23		Seal-Lip	1
24	322-4	Screw - Cap Hex. Hd.	4
25	25-2680	Gerotor Assembly	1

Ref. No.	Part No.	Description	No. Used
26	25-2530	Pin - Straight	1
27	237-35	O-Ring	1
28	49-8480	Shaft - Trunnion	1
32	25-2480	Spring - Charge Relief	1
33		Cone - Charge Relief	1
34	32120-15	Ring - Retaining	1
35	251-8	Bearing - Ball	1
36	32120-11	Ring - Retaining	1
37	25-2450	Swash/Plate	1
38	32121-91	Pin - Coiled Spring	3
39	25-2380	Plate - Thrust	1
40	25-2390	Plate - Valve	1
41	25-2430	Pin - Straight	1
42		Bearing - Needle	1
43	25-2400	Gasket	1
44	62-4290	O-Ring	2
45		Cap - Pump End	1
46	323-11	Screw - Cap Hex. Hd.	4
47	25-2490	Ball - Check Valve	2
48	25-2640	Spring - Check Valve	2
49	237-86	O-Ring	2
50	25-2650	Plug - Check Valve	2
*	25-3180	Kit - Check Valve (Incl. Ref. #47-50)	1
*	49-8520	Kit - Implement Relief (Incl. Ref. #14-18)	1

*Not Illustrated

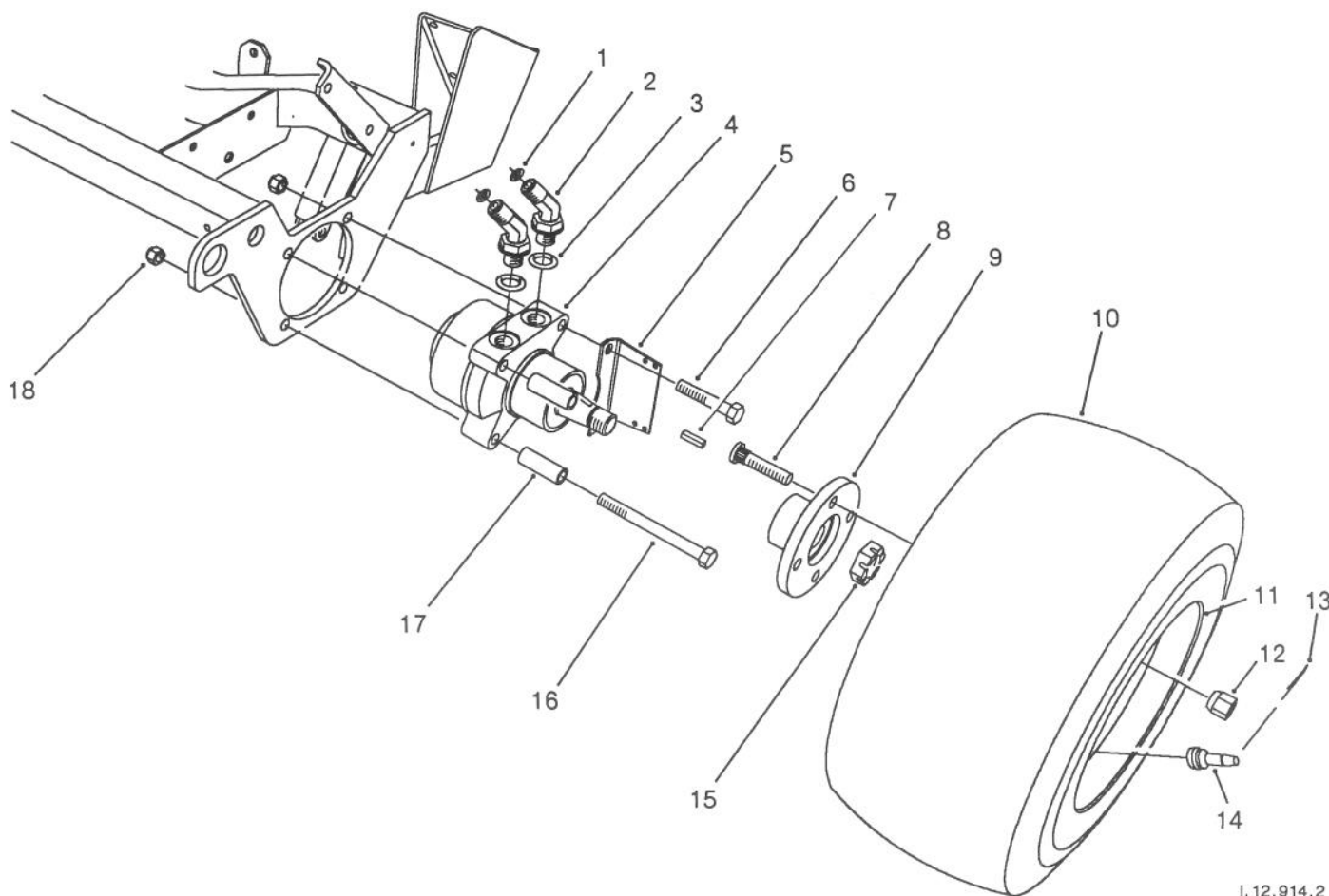


I.12.914.11

TRACTION CONTROLS ASSEMBLY

Ref. No.	Part No.	Description	No. Used
1	3296-42	Nut - Lock	2
2	29-6150	Spring - Leaf	1
3	29-6170	Spring - Extended Leaf	1
4	29-6120	Plate - Pump	1
5	321-4	Screw - Cap Hex. Hd.	2
6	3296-4	Nut - Lock	2
7	2411-35	Joint - Ball (L.H.)	1
8	61-2940	Lever - Pump	1
9	3220-20	Nut - Jam (L.H.)	1
10	32121-4	Pin - Roll	2
11	49-6440	Pedal - Fwd.	1
12	49-6470	Pad - Pedal Fwd.	1
13	61-2570	Traction Pedal Assembly	1
14	61-2620	Rod - Link	1
15	62-5030	Pedal - Reverse	1
16	49-6430	Pad - Pedal Reverse	1

Ref. No.	Part No.	Description	No. Used
17	3220-2	Nut - Jam (R.H.)	1
18	2411-33	Joint - Ball (R.H.)	1
19	61-2610	Arm - Traction	1
20	32121-16	Pin - Roll	1
21	3249-11	Screw - Mach. Rd. Hd.	2
22	29-6161	Switch - Micro	1
23	46-8810	Stop - Spring	1
24	32121-24	Pin - Roll	1
25	3254-9	Washer - Lock	2
26	3217-16	Nut - Lock	2
27	3219-2	Nut - Lock	1
28	3210-7	Screw - Cap Hex. Hd.	1
29	3296-29	Nut - Lock	1
30	251-259	Bearing - Ball	1
31	32104-42	Screw - Hex. Hd. Self Tap	3
32	322-17	Screw - Cap Hex. Hd.	1

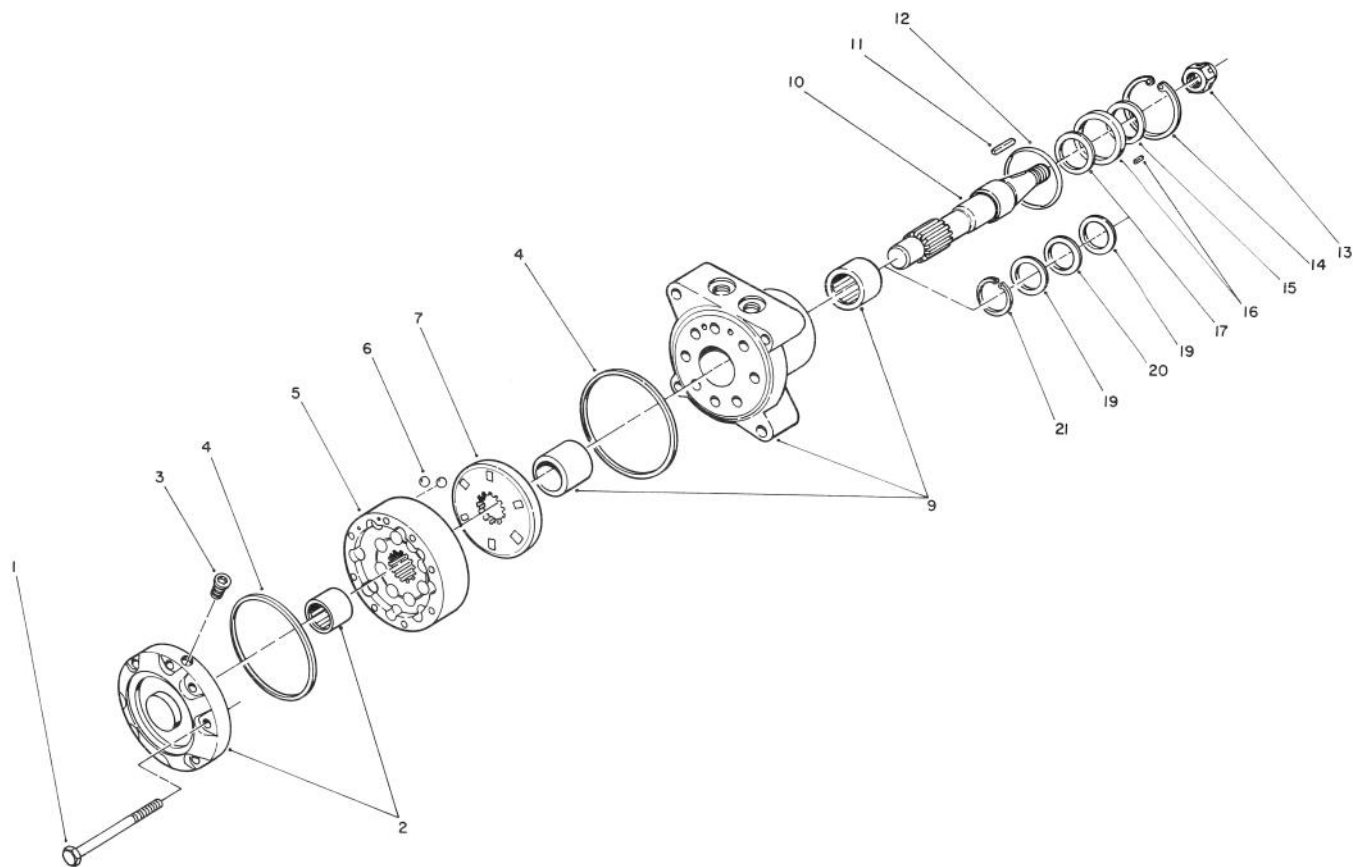


I.12.914.2

FRONT WHEEL ASSEMBLY

Ref. No.	Part No.	Description	No. Used
1	237-30	O-Ring	4
2	340-89	Fitting - 45° Elbow (Incl. Ref. #1 & 3)	4
3	237-80	O-Ring	4
4	62-9490	Motor - Hydraulic (Incl. Ref. #7 & 15)	2
5	62-5110	Bracket - Brake Spring	2
6	325-11	Screw - Cap Hex. Hd.	4
7	65-4640	Key - Square	2
8	10-6830	Stud - Drive	8

Ref. No.	Part No.	Description	No. Used
9	10-6870	Hub - Wheel	2
10	231-121	Tire	2
11	217-60	Rim - Wheel	2
12	242-50	Nut - Lug -	8
13	3272-20	Pin - Cotter	2
14	232-27	Stem - Valve	2
15	65-4650	Nut - Slotted Hex.	2
16	325-22	Screw - Cap Hex. Hd.	4
17	61-3890	Spacer - Brake	4
18	3296-23	Nut - Lock	8



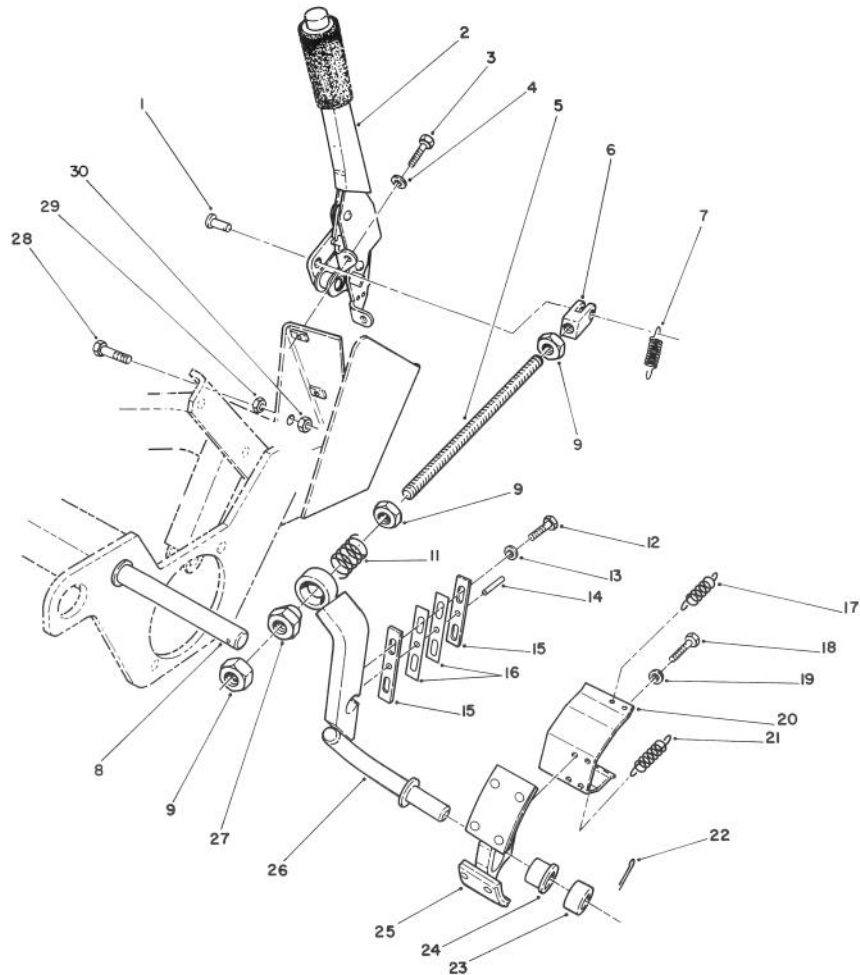
HYDRAULIC DRIVE MOTOR NO. 62-9490

Ref. No.	Part No.	Description	No. Used
1	65-4580	Screw - Cap Hex. Hd.	8
2	65-4680	Cover & Bearing Assembly	1
3	65-4560	Plug - Hex. (Hollow)	1
4	65-4570	Seal - Square Ring	2
5	65-4630	IGR Assembly	1
6	65-4550	Valve - Check Ball	2
7	65-4540	Plate - Valve	1
9	65-4670	Body & Bearing Assembly	1
10	65-4660	Shaft	1
11	65-4640	Key - Square	1
12	65-4620	Seal - O-Ring	1
13	65-4650	Nut - Slotted Hex.	1

Ref. No.	Part No.	Description	No. Used
14	65-4500	Seal - Snap Ring	1
15†		Seal - Dust	1
16†		Retainer/Pin	1
17†		Seal - Lip	1
18	65-4690	Seal/Retainer Assembly (Incl. Ref. #15-17)	1
19	65-4600	Washer - Thrust	2
20	65-4610	Bearing - Thrust	1
21	65-4590	Ring - Snap	1
*	65-4700	Body Seal Kit (Incl. Ref. #4, 12 & 15-17)	1

*Not Illustrated

† Not available from Toro as a replacement part.



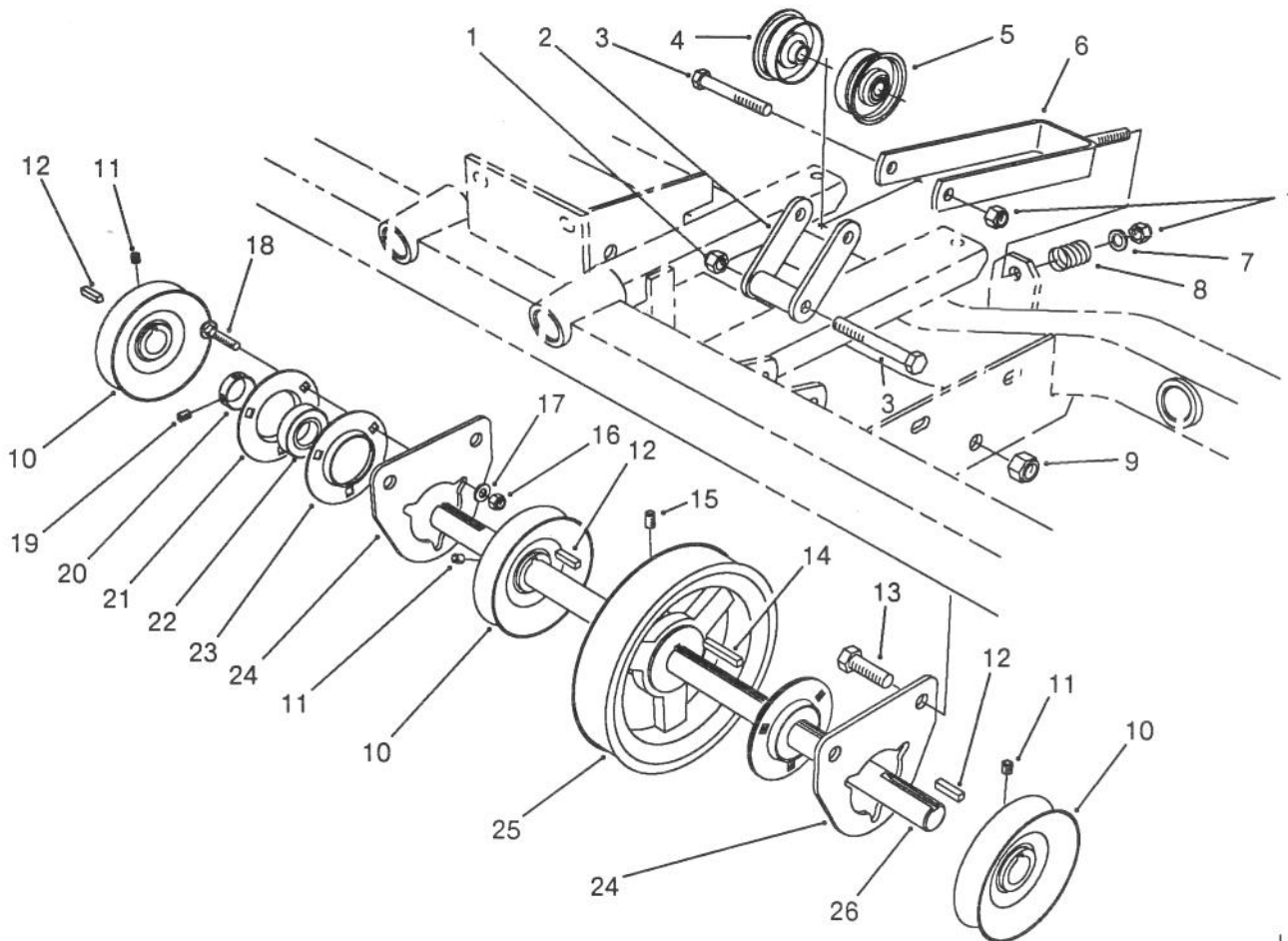
I.12.914.21

BRAKE ASSEMBLY

Ref. No.	Part No.	Description	No. Used
1	283-64	Pin - Clevis	1
2	61-3990	Brake Handle Assembly	1
3	322-5	Screw - Cap Hex. Hd.	2
4	3253-4	Washer - Lock	2
5	62-4910	Rod - Brake	1
6	62-4920	Clevis - Brake	1
7	5-7290	Spring - Extension	1
8	62-5060	Shaft - Brake	1
9	3220-5	Nut - Jam	3
11	62-5160	Spring - Compression	1
12	321-5	Screw - Cap Hex. Hd.	2
13	3253-3	Washer - Lock	2
14	32121-6	Pin - Roll	2
15	61-3980	Plate - Slide (Outer)	2
16	62-7130	Plate - Slide (Inner)	2

Ref. No.	Part No.	Description	No. Used
17	62-7110	Spring - Extension (Upper)	4
18	32105-8	Screw - Slot Hex.	2
19	3254-1	Washer - Lock	4
20	62-5100	Bracket - Return Spring	2
21	62-5170	Spring - Extension (Lower)	4
22	3272-16	Pin - Cotter	2
23	62-7160	Spacer	2
24	256-291	Bushing - Flange	2
25	62-4930	Shoe - Brake	2
26	61-3950	Arm - Brake (L.H.)	1
*	61-3910	Arm - Brake (R.H.)	1
27	242-50	Nut - Lug	1
28	322-7	Screw - Cap Hex. Hd.	1
29	3217-6	Nut - Jam	1
30	3296-29	Nut - Jam	1

*Not Illustrated



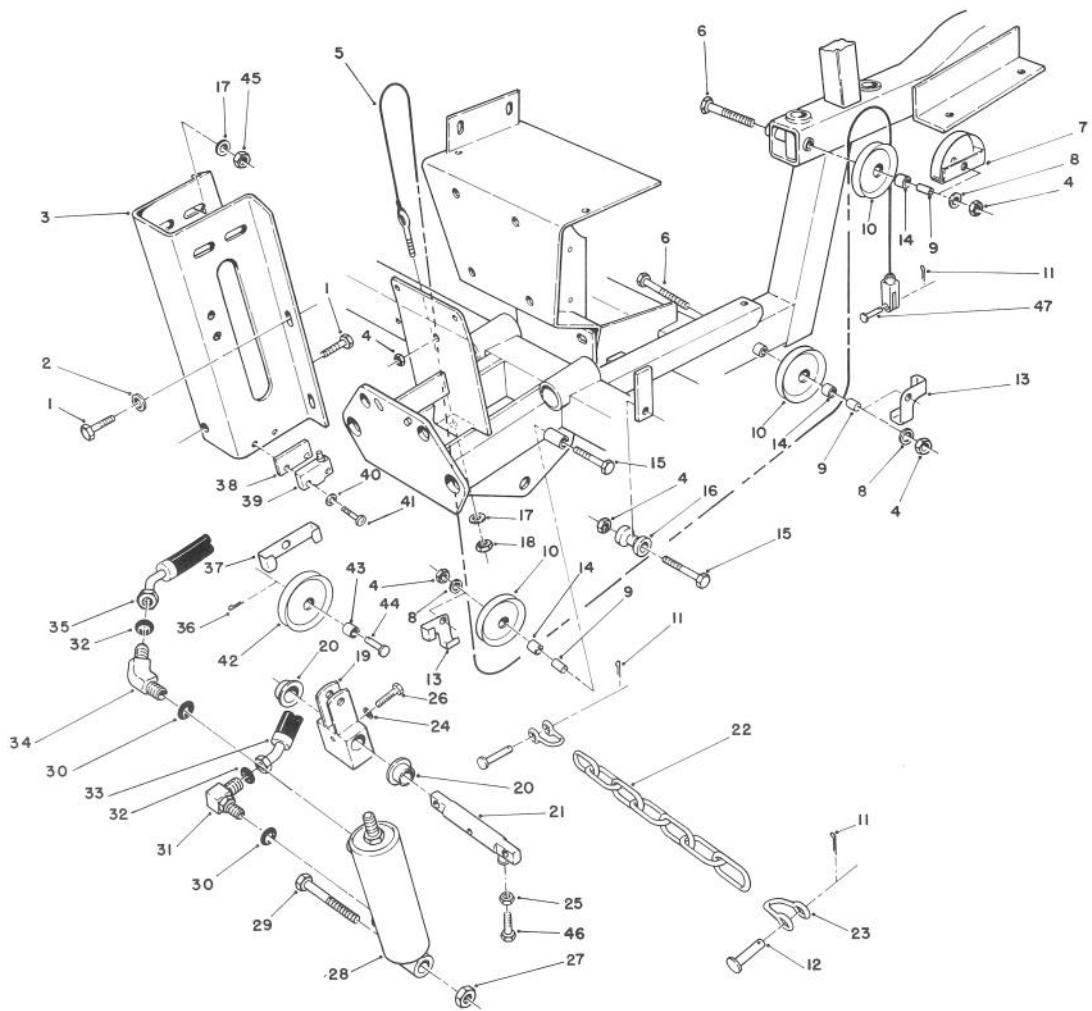
I.12.914.5

JACKSHAFT ASSEMBLY

Ref. No.	Part No.	Description	No. Used
1	3296-39	Nut - Lock	3
2	61-2290	Idler Bracket W.A.	1
3	323-20	Screw - Cap Hex. Hd.	2
4	65-5800	Pulley Half - Idler	1
5	65-5880	Pulley Half - Idler	1
6	61-2320	Belt Tensioner W.A.	1
7	3256-24	Washer - Flat	1
8	20-6110	Spring - Compression	1
9	3296-23	Nut - Lock	4
10	61-0140	Pulley - Jackshaft	3
11	3242-2	Screw - Set	6
12	5-7280	Key - Square (Short)	3
13	325-4	Screw - Cap Hex. Hd.	4
14	3-3267	Key - Square (Long)	1

Ref. No.	Part No.	Description	No. Used
15	3242-6	Screw - Set	2
16	3296-29	Nut - Lock	6
17	3256-23	Washer - Flat	6
18	3230-10	Bolt - Carriage	6
19	3245-35	Screw - Set	4
20	251-77	Collar - Locking (Incl. Ref. #19)	2
21	251-319	Flange - Bearing (Lube)	2
*	302-11	Fitting - Grease	2
22	251-320	Bearing	2
23	251-229	Flange - Bearing	2
24	61-2350	Mount - Bearing	2
25	61-0070	Pulley - Poly V	1
26	61-2340	Shaft - Drive	1

*Not Illustrated

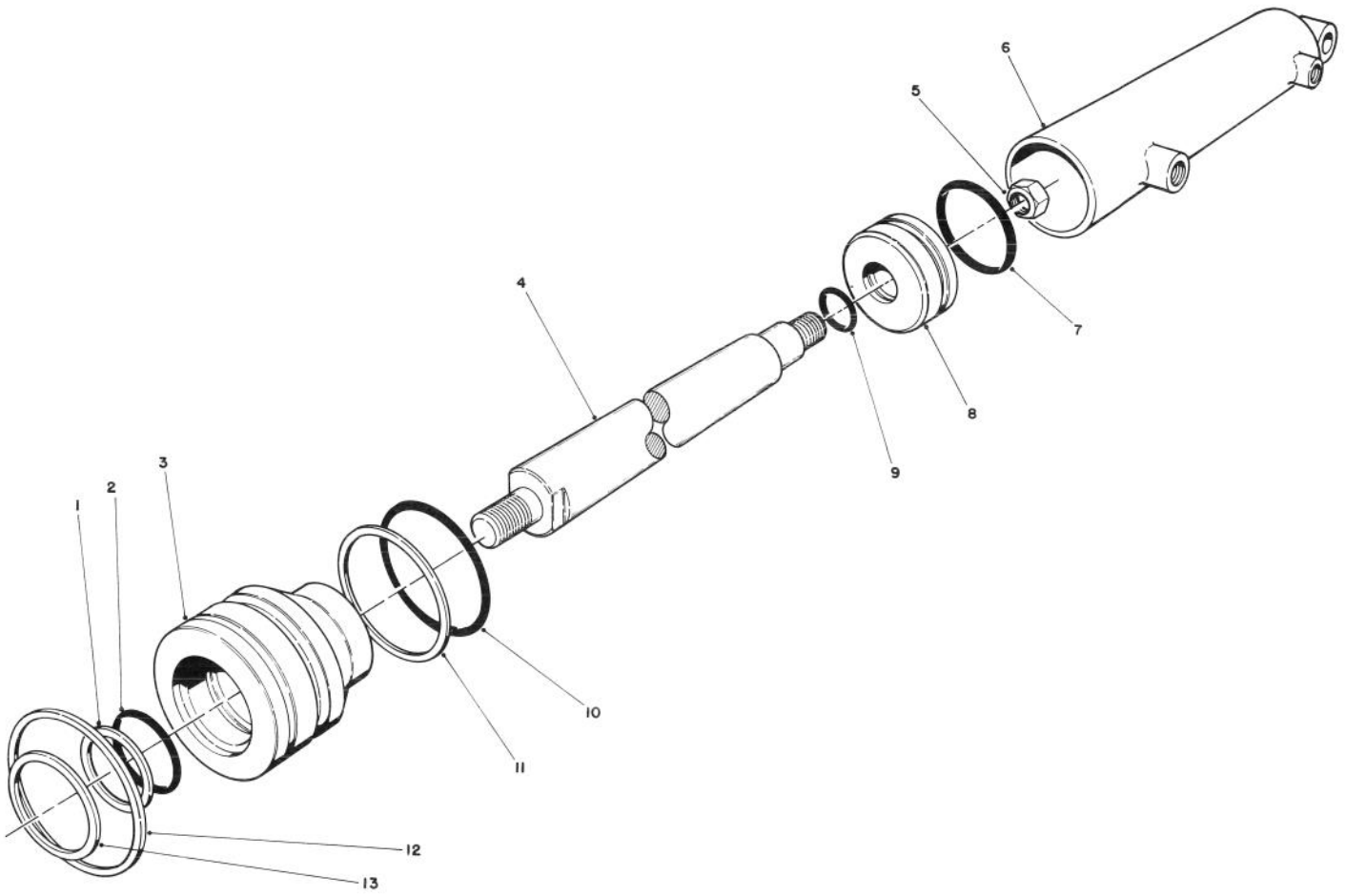


1.12.914.5

CUTTING UNIT LIFT ASSEMBLY

Ref. No.	Part No.	Description	No. Used
1	323-6	Screw - Cap Hex. Hd.	5
2	3256-24	Washer - Flat	4
3	61-2420	Bracket - Cyl. Support	1
4	3296-39	Nut - Lock	5
5	61-3260	Cable - Lift	1
6	323-16	Screw - Cap Hex. Hd.	2
7	61-3240	Keeper - Cable	1
8	3256-4	Washer - Flat	3
9	61-3230	Spacer - Pulley	3
10	61-3210	Pulley - Cable (Incl. Ref. #14)	3
11	3272-10	Pin - Cotter	5
12	283-6	Pin - Clevis	4
13	5-2656	Keeper - Cable	2
14	256-1	Bushing	3
15	323-13	Screw - Cap Hex. Hd.	2
16	61-1940	Roller - Cable	1
17	3256-23	Washer - Flat	5
18	3296-4	Nut - Lock	3
19	61-2430	Hub - Lift	1
20	256-289	Bushing - Flange	2
21	61-2460	Pin - Cylinder	1
22	61-3830	Chain - Lift	2
23	282-4	Shackle - Chain	4
24	3253-3	Washer - Lock	1
25	3218-1	Nut - Jam	1

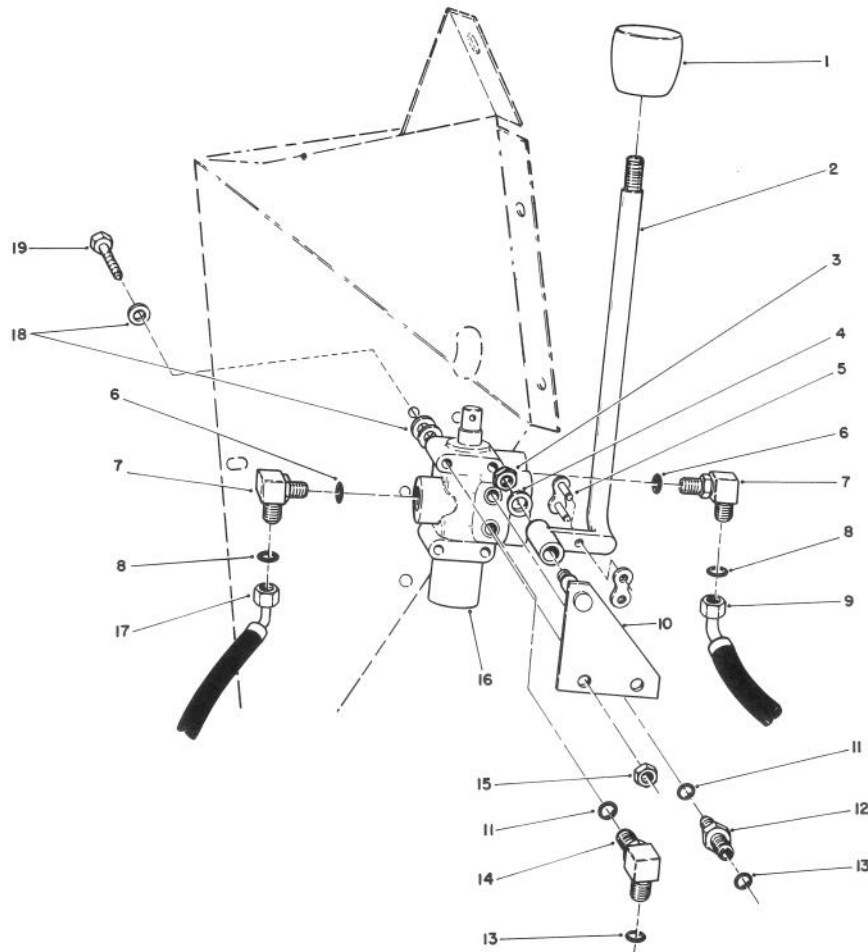
Ref. No.	Part No.	Description	No. Used
26	321-4	Screw - Cap Hex. Hd.	1
27	3296-41	Nut - Lock	1
28	61-0090	Cylinder - Lift	1
29	3214-13	Screw - Cap Hex. Hd.	1
30	237-42	O-Ring	2
31	340-77	Fitting - 90° Elbow (Incl. Ref. #30 & 32)	1
32	237-22	O-Ring	2
33	61-2490	Hydraulic Hose Assy.	1
34	340-87	Fitting - 45° Elbow (Incl. Ref. #30 & 32)	1
35	61-2500	Hydraulic Hose Assy.	1
36	3272-6	Pin - Cotter	1
37	5-2655	Keeper - Cable	1
38	61-2990	Spacer - Switch	1
39	29-6161	Switch - Micro	1
40	3254-9	Washer - Lock	2
41	3250-35	Screw - Pan Hd. Mach.	2
42	5-2653	Pulley - Cable (Incl. Ref. #43)	1
43	256-2	Bushing	1
44	283-42	Pin - Clevis	1
45	3296-29	Nut - Lock	4
46	321-3	Screw - Cap Hex. Hd.	1
47	283-58	Pin - Clevis	1



HYDRAULIC CYLINDER NO. 61-0090

Ref. No.	Part No.	Description	No. Used
1		Washer - Backup	1
2		O-Ring	1
3	61-3110	Head	1
4	61-3100	Shaft	1
5	32152-6	Nut - Lock	1
6		Barrel	1
7		Uniring	1
8	61-1880	Piston	1

Ref. No.	Part No.	Description	No. Used
9		O-Ring	1
10		O-Ring	1
11		Washer - Backup	1
12	61-3120	Ring - Retaining	1
13		Seal - Dust	1
*	61-3200	Repair Kit (Incl. Ref. #1-2, 7, 9-11 & 13)	1

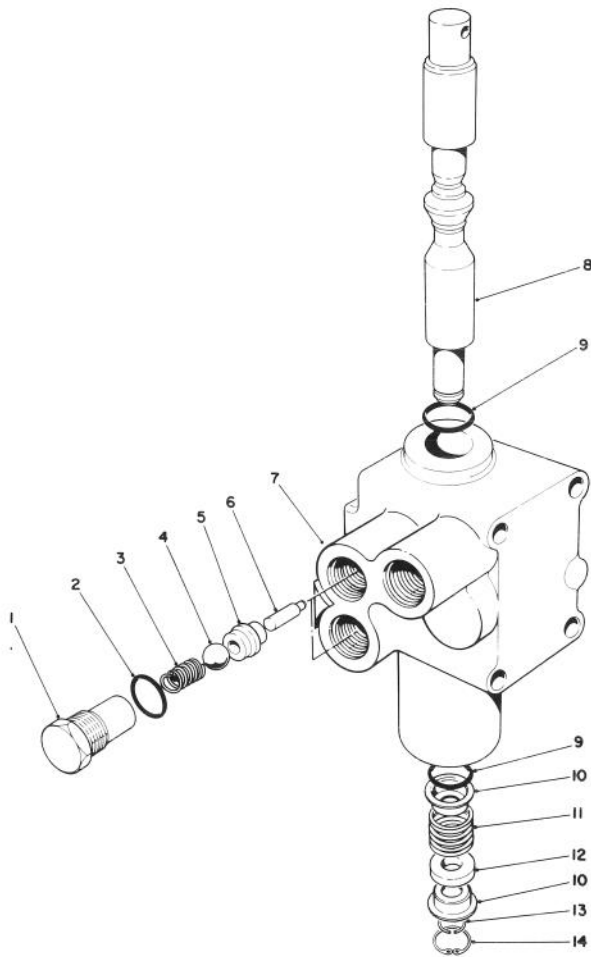


I.12.914.12

CUTTING UNIT LIFT CONTROL VALVE ASSEMBLY

Ref. No.	Part No.	Description	No. Used
1	233-37	Knob	1
2	61-2750	Lever - Valve	1
3	3296-39	Nut - Lock	1
4	3256-45	Washer	1
5	2710-16	Link - Chain	1
6	237-79	O-Ring	2
7	340-99	Fitting - 90° Elbow (Incl. Ref. #6 & 8)	2
8	237-22	O-Ring	2
9	61-2510	Hydraulic Hose Assy. (Low)	1
10	61-2720	Bracket - Lever	1

Ref. No.	Part No.	Description	No. Used
11	237-78	O-Ring	2
12	340-88	Fitting - Straight (Incl. Ref. #11 & 13)	1
13	237-21	O-Ring	2
14	340-97	Fitting - 90° Elbow (Incl. Ref. #11 & 13)	1
15	3296-16	Nut - Lock	3
16	43-1950	Valve - Hydraulic	1
17	61-2520	Hydraulic Hose Assy. (Up)	1
18	3256-22	Washer - Flat	9
19	321-23	Screw - Cap Hex. Hd.	3

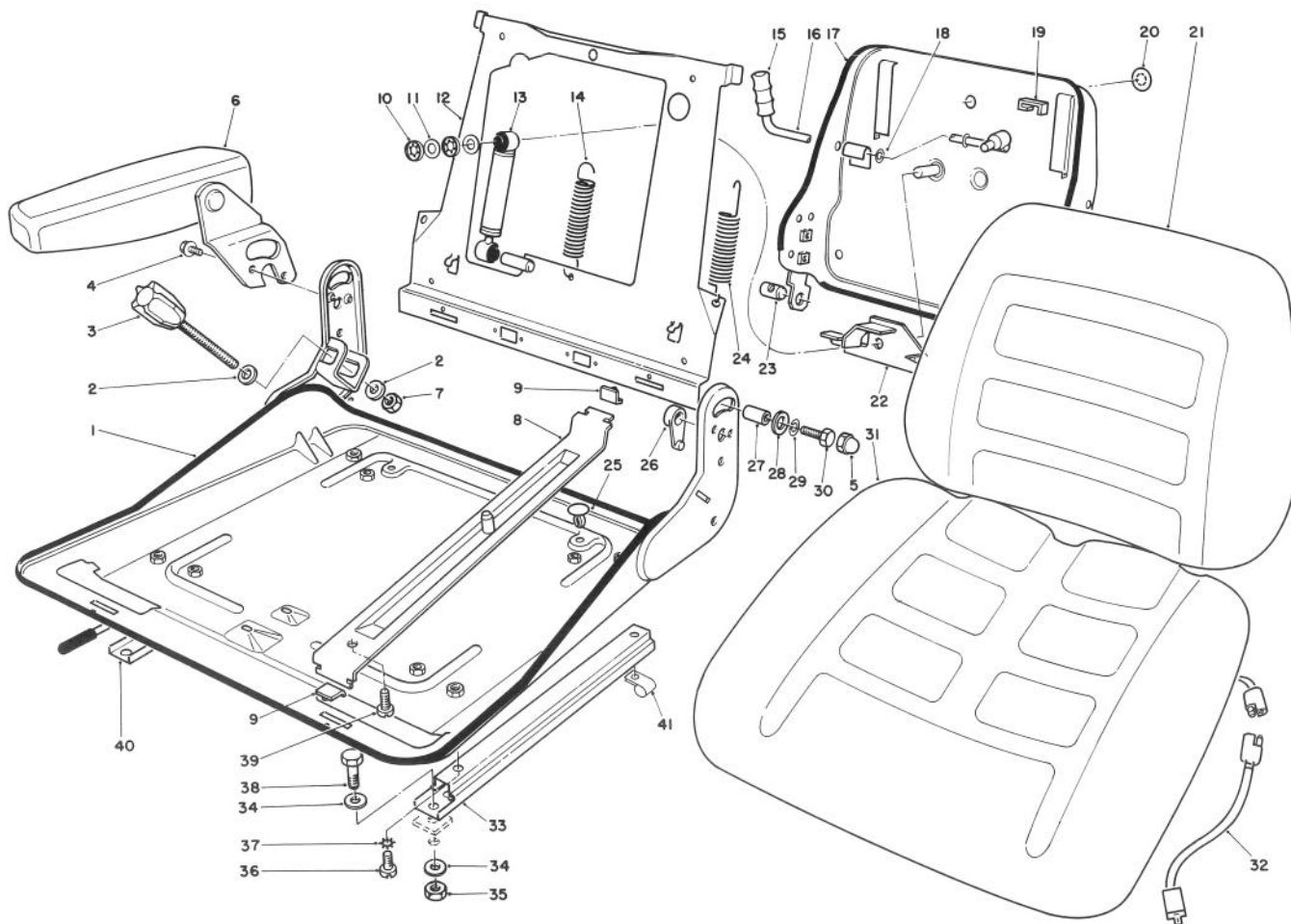


CONTROL VALVE NO. 43-1950

Ref. No.	Part No.	Description	No. Used
1	22-8330	Plug	2
2	237-42	O-Ring	2
3	22-8340	Spring	2
4	22-8350	Ball	2
5	22-8370	Seat - Check Valve	2
6	22-8360	Pin - Cam	2
7†		Body	1

Ref. No.	Part No.	Description	No. Used
8	22-8420	Spool	1
9	22-8500	O-Ring	2
10	22-8380	Retainer - Spring	2
11	22-8410	Spring	1
12	23-3030	Spacer	1
13	22-8480	Snap-Ring - Spool	1
14	22-8490	Snap-Ring	1

†Note: Order complete assembly.

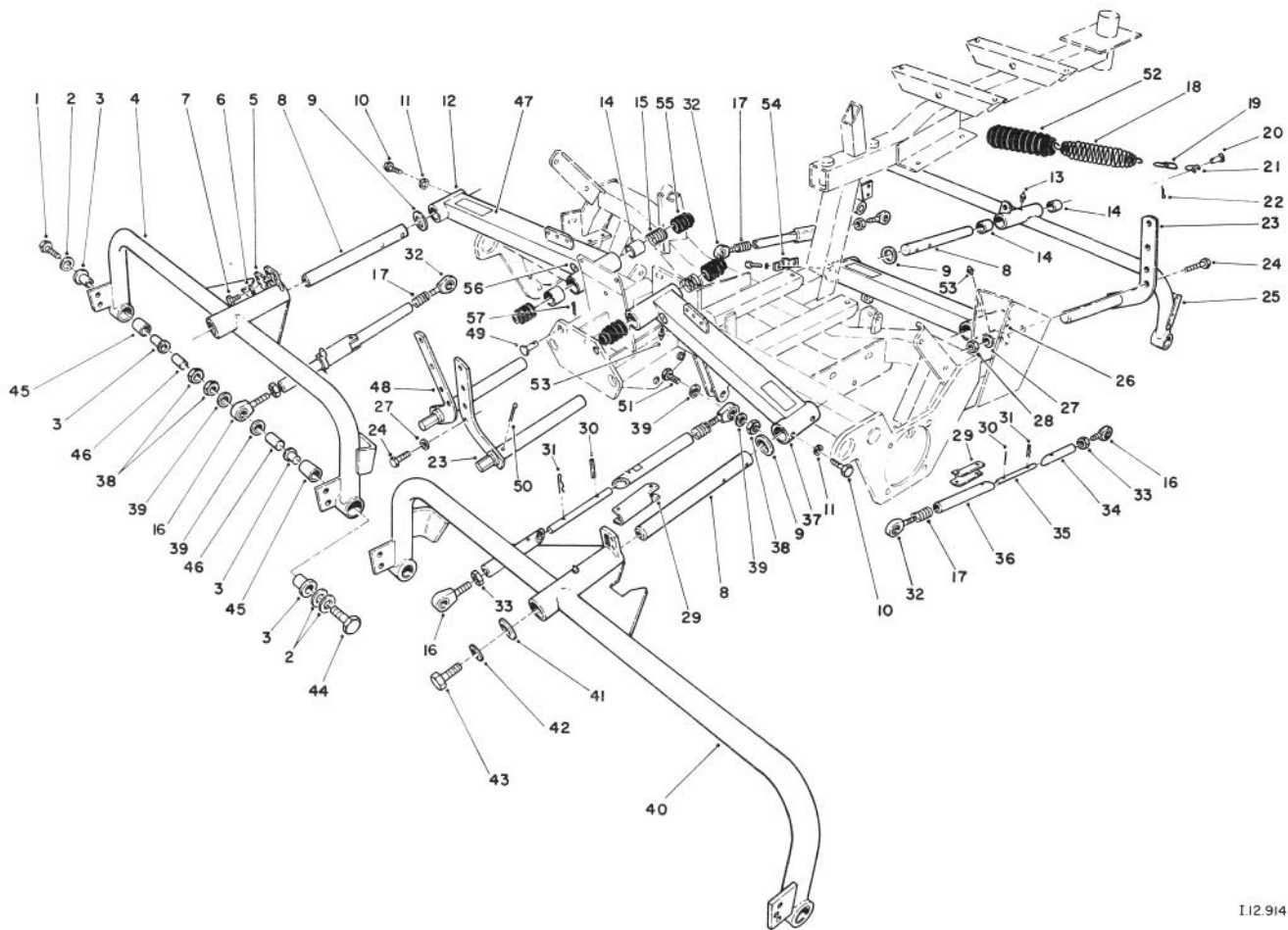


SEAT ASSEMBLY MODEL NO. 30756 (Optional)

Ref. No.	Part No.	Description	No. Used
1	56-3810	Platform - Seat	1
2	56-3880	Washer - Flat	2
3	56-3870	Knob - Adjustment	1
4	56-3850	Screw - Hex. Hd. Machine	2
5	56-3960	Cover - Screw	4
6	55-4331	Arm Rest Assembly R.H.	1
*	55-4330	Arm Rest Assembly L.H.	1
7	56-3890	Nut - Hex.	1
8	56-3970	Carrier - Seat	2
9	56-3980	Clip - Rail	4
10	56-4080	Clamp - Axle	2
11	56-4090	Washer - Flat	2
12	56-4040	Plate - Back	1
13	62-7670	Shock Absorber - Seat	1
14	56-4050	Spring - Extension	1
15		Grip - Cover	1
16	56-4150	Lever - Handle (Incl. Ref. #15)	1
17	56-3820	Cover - Seat Back	1
18	56-4160	Washer - Flat	2
19	56-4130	Bumper	2
20	56-4120	Cover	1
21	56-3800	Cushion - Seat Back	1
22	56-4100	Bracket - Lever	1

Ref. No.	Part No.	Description	No. Used
23	56-4170	Pin - Clevis	1
24	56-4060	Spring - Extension	1
25	56-4190	Cap - Seat	2
26	56-3900	Spacer - Arm L.H.	1
*	56-3910	Spacer - Arm R.H.	1
27	56-3920	Bushing - Sleeve	4
28	56-3930	Washer - Flat	4
29	56-3940	Washer - Lock	4
30	56-3950	Screw - Cap Hex. Hd.	4
31	56-3790	Cushion - Seat Bottom	1
32	55-8380	Seat Wire Assembly	1
33	56-4000	Bottom Rail Assembly L.H.	1
34	3256-23	Washer - Flat	8
35	3296-29	Nut - Lock	4
36	56-4020	Screw - Machine	4
37	56-4030	Washer - Lock	4
38	322-5	Screw - Cap Hex. Hd.	4
39	56-3990	Screw - Machine	*2
40	56-4010	Bottom Rail Assembly R.H.	1
41	2412-67	Clamp - R	1
*	55-8420	Seat Assembly (Incl. Ref. #1-3, 5, 7-31, 33, 36-37 & 39-40)	1

*Not Illustrated



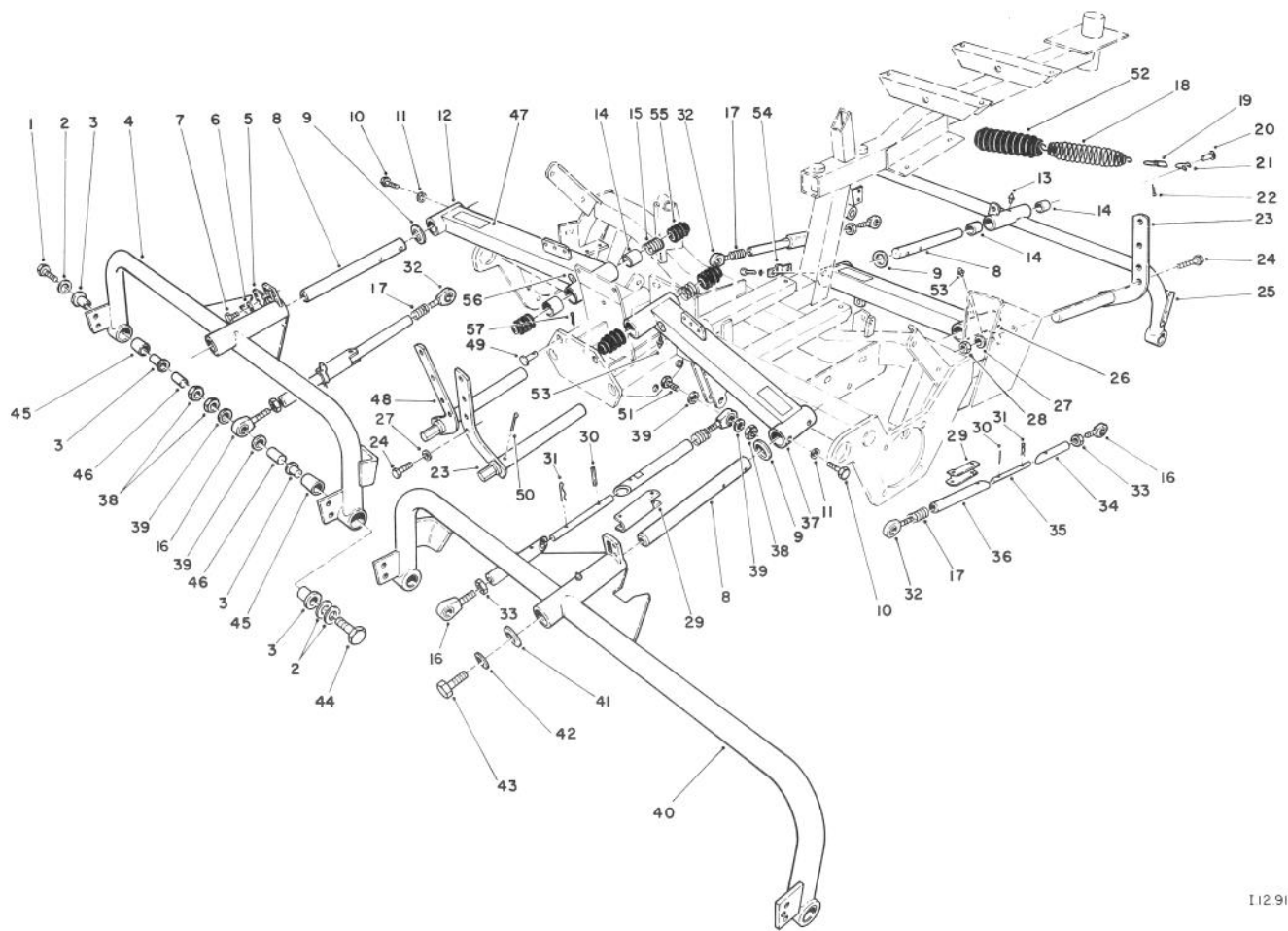
I.12.914.10

CUTTING UNIT CARRIER FRAME ASSEMBLY

Ref. No.	Part No.	Description	No. Used
†1	325-10	Screw - Cap Hex. Hd.	2
†2	3256-26	Washer - Flat	6
†3	256-285	Bushing - Flange	12
†4	61-0860	Carrier Frame R.H. (Incl. Ref. #13, 14 & 45)	1
5	61-3600	Tab - Lift	3
6	3253-3	Washer - Lock	6
7	321-2	Screw - Cap Hex. Hd.	6
8	61-3000	Rod - Pivot	3
9	256-115	Washer - Thrust	3
10	322-4	Screw - Cap Hex. Hd.	6
11	3253-4	Washer - Lock	6
12	61-2830	Lift Arm - R.H. (Incl. Ref. #14 & 53)	1
†13	302-5	Fitting - Grease	3
14	3-0348	Bushing	12
15	61-3270	Spring - Compression	2
16	61-3530	Balljoint - R.H. Thread	4
17	62-5160	Spring - Compression	4
18	5-0743	Spring - Extension	3
19	62-7300	Chain - Adjustment	1
20	283-6	Pin - Clevis	3
21	282-4	Shackle - Spring	3

Ref. No.	Part No.	Description	No. Used
22	3272-10	Pin - Cotter	3
23	61-2930	Pivot Shaft L.H.	2
24	323-7	Screw - Cap Hex. Hd.	3
†25	61-0870	Carrier Frame - Rear (Incl. Ref. #13, 14 & 45)	1
26	61-2890	Lift Arm - Rear (Incl. Ref. #14 & 53)	1
27	3256-4	Washer - Flat	5
28	3296-39	Nut - Lock	6
29	61-3510	Handle - Belt Tension	4
30	32121-6	Pin - Roll	4
31	3290-468	Hairpin - Cotter	4
32	61-3540	Balljoint - L.H. Thread	4
33	3220-5	Nut - Jam	4
34	61-3480	Rod - Belt Tension (Short)	4
35	61-3500	Rod - Belt Tension	4
36	61-3490	Rod - Belt Tension (Long)	4
37	61-2880	Lift Arm - L.H. (Incl. Ref. #14 & 53)	1
38	3296-45	Nut - Lock	10
39	61-0640	Spacer - Balljoint	16
†40	61-0880	Carrier Frame L.H. (Incl. Ref. #13, 14 & 45)	1

† For 8 blade cutting units only.



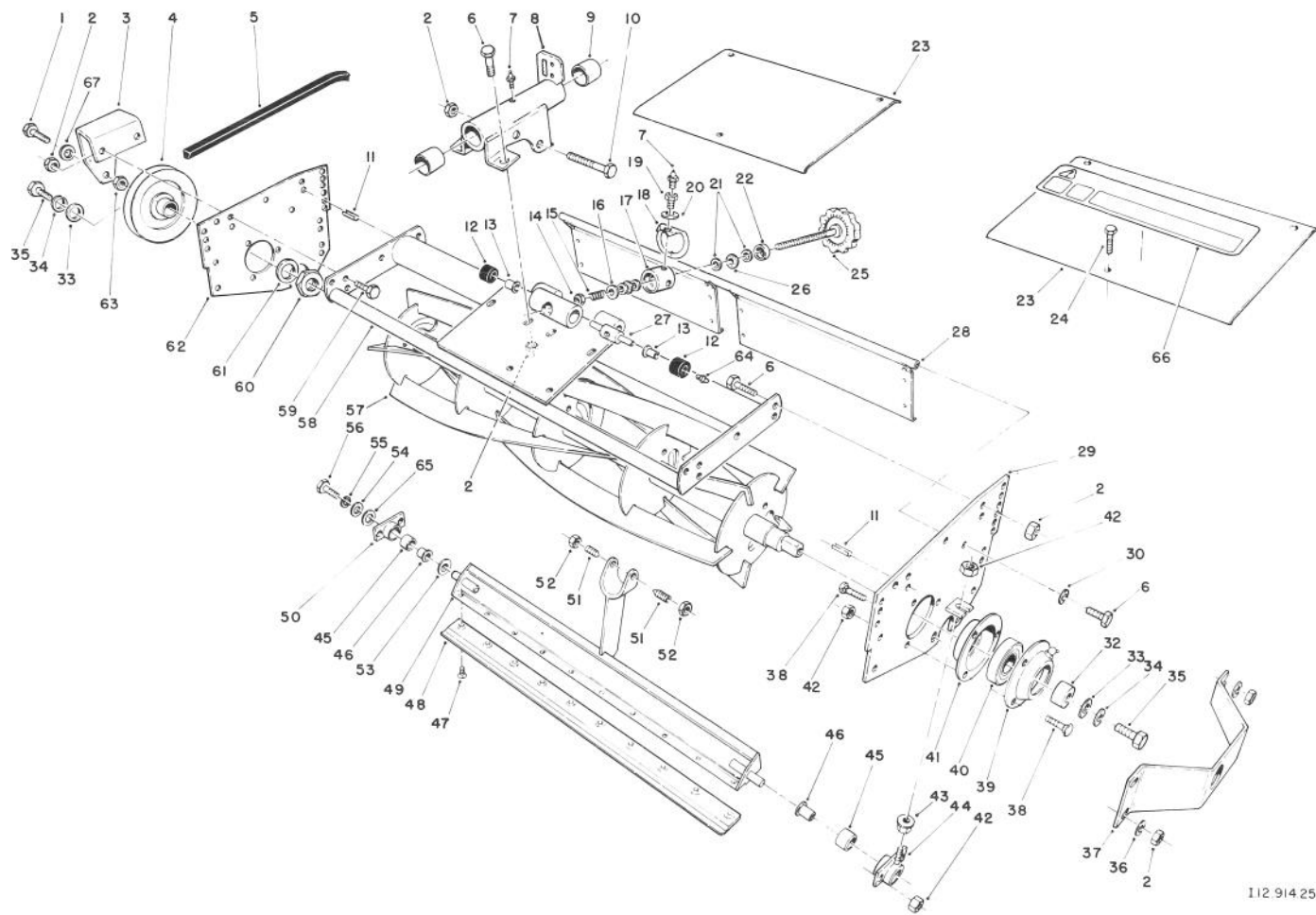
I12 914.10

CUTTING UNIT CARRIER FRAME ASSEMBLY (Continued)

Ref. No.	Part No.	Description	No. Used
41	3256-6	Washer - Flat	3
42	3253-7	Washer - Lock	3
43	325-4	Screw - Cap Hex. Hd.	3
†44	325-14	Screw - Cap Hex. Hd.	4
†45	61-0710	Bushing Assy.	6
†46	61-1370	Spacer	6
47	61-3610	Decal - Warning	3
48	61-2900	Pivot Shaft R.H.	1
49	283-8	Pin - Clevis	3

Ref. No.	Part No.	Description	No. Used
50	3272-17	Pin - Cotter	3
51	325-8	Screw - Cap Hex. Hd.	4
52	62-7240	Sleeve - Spring	1
53	302-60	Fitting - Grease	3
54	61-3820	Retainer - Cable	1
55	62-7250	Boot	6
56	58-6520	Decal - Grease Fitting	3
57	3290-322	Hairpin - Cotter	3

† For 8 blade cutting units only.



112 914 25

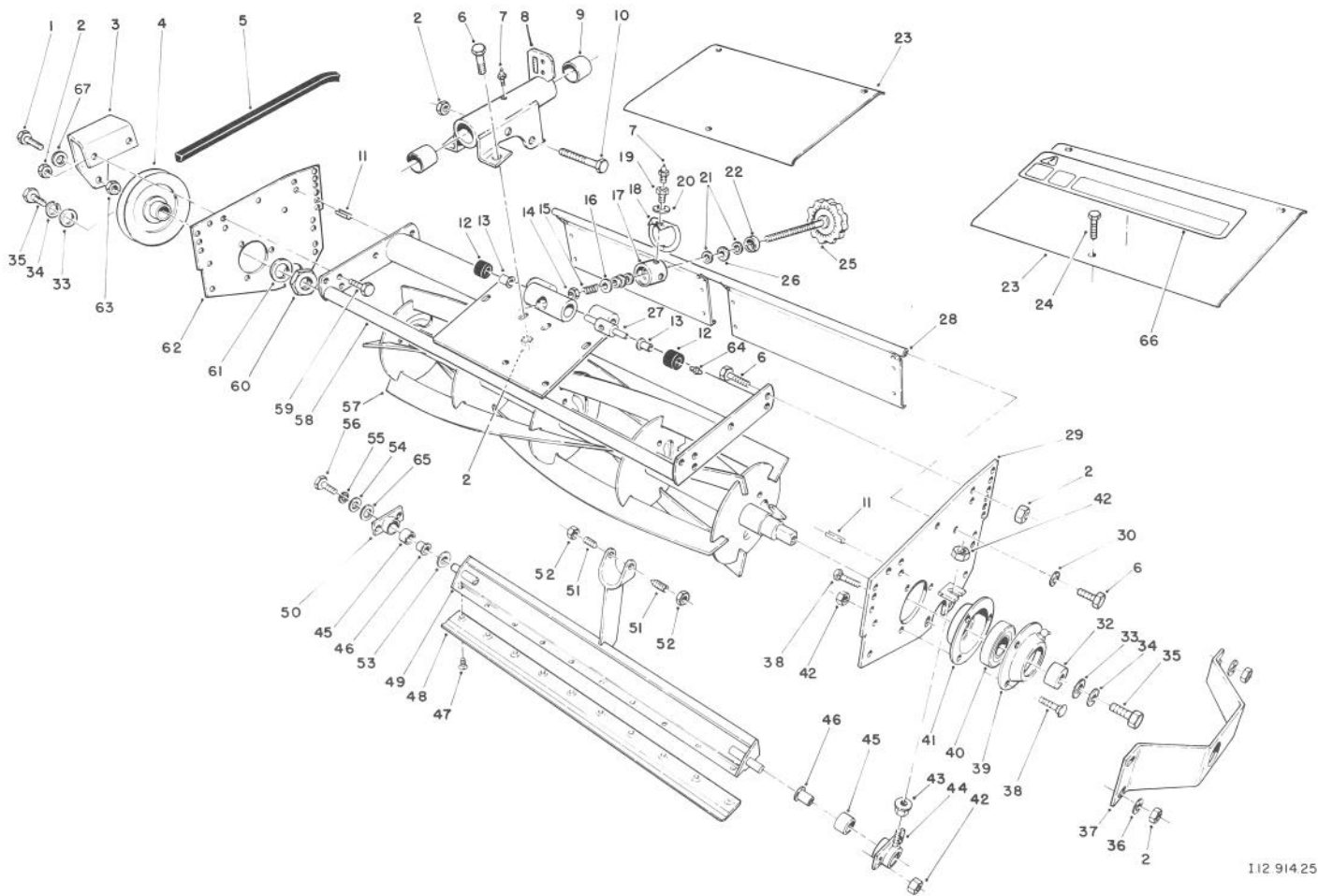
5 BLADE CUTTING UNIT REEL ASSEMBLY

Ref. No.	Part No.	Description	No. Used
1	325-7	Screw - Cap Hex.Hd.	1
2	3296-39	Nut - Lock (Use 14 nuts on rear cutting unit)	12
3	61-0900	Bracket - Tensioner (Use 2 brackets on rear cutting unit)	1
4	61-0160	Pulley - Reel, 5 Blade	1
5	61-3380	V-Belt	1
6	323-6	Screw - Cap Hex. Hd.	8
7	302-5	Fitting - Grease	2
8	61-1050	Front Support - L.H. (Incl. Ref. #7 & 9)	1
*	61-3660	Front Support - R.H. (Incl. Ref. #7 & 9)	1
*	61-0670	Rear Support - (Incl. Ref. #7 & 9)	1
9	3-0348	Bushing	2
10	323-12	Screw - Cap Hex. Hd.	1
11	32121-36	Pin - Roll	4
12	62-5510	Rubber Bushing Assembly	2
13	52-2890	Bushing - Flanged Nylon	2
14	3296-62	Nut - Lock	1
15	57-5270	Spring - Compression	1

Ref. No.	Part No.	Description	No. Used
16	29-8870	Washer - Flat	1
17	52-2980	Pivot - Single Point Adjust	1
18	52-3000	Arm - Spring	1
19	52-2990	Capscrew - Spring Retainer	1
20	3256-25	Washer - Flat	1
21	257-5	Washer - Thrust	4
22	253-84	Seal	1
23	61-0550	Shield - Top	2
24	32144-10	Screw - Cap Hex. Hd.	6
25	61-1070	Handle - Assy	1
26	257-6	Bearing - Thrust	2
27	57-5260	Pin - S.P.A.	1
28	61-1130	Rear Grass Guard	1
29	61-0940	Sideplate - Adjust	1
30	3253-5	Washer - Lock	2
32	61-0500	Spacer - Bearing	1
33	5-0838	Washer - Flat	2
34	3253-21	Washer - Lock	2
35	3211-4	Screw - Cap Hex. Hd.	2
36	3256-3	Washer - Flat	5
37	61-0610	Guard - Side (Used on front cutting units only)	1
38	3230-20	Bolt - Carriage	10

NOTE: Front left cutting unit shown.

*Not Illustrated



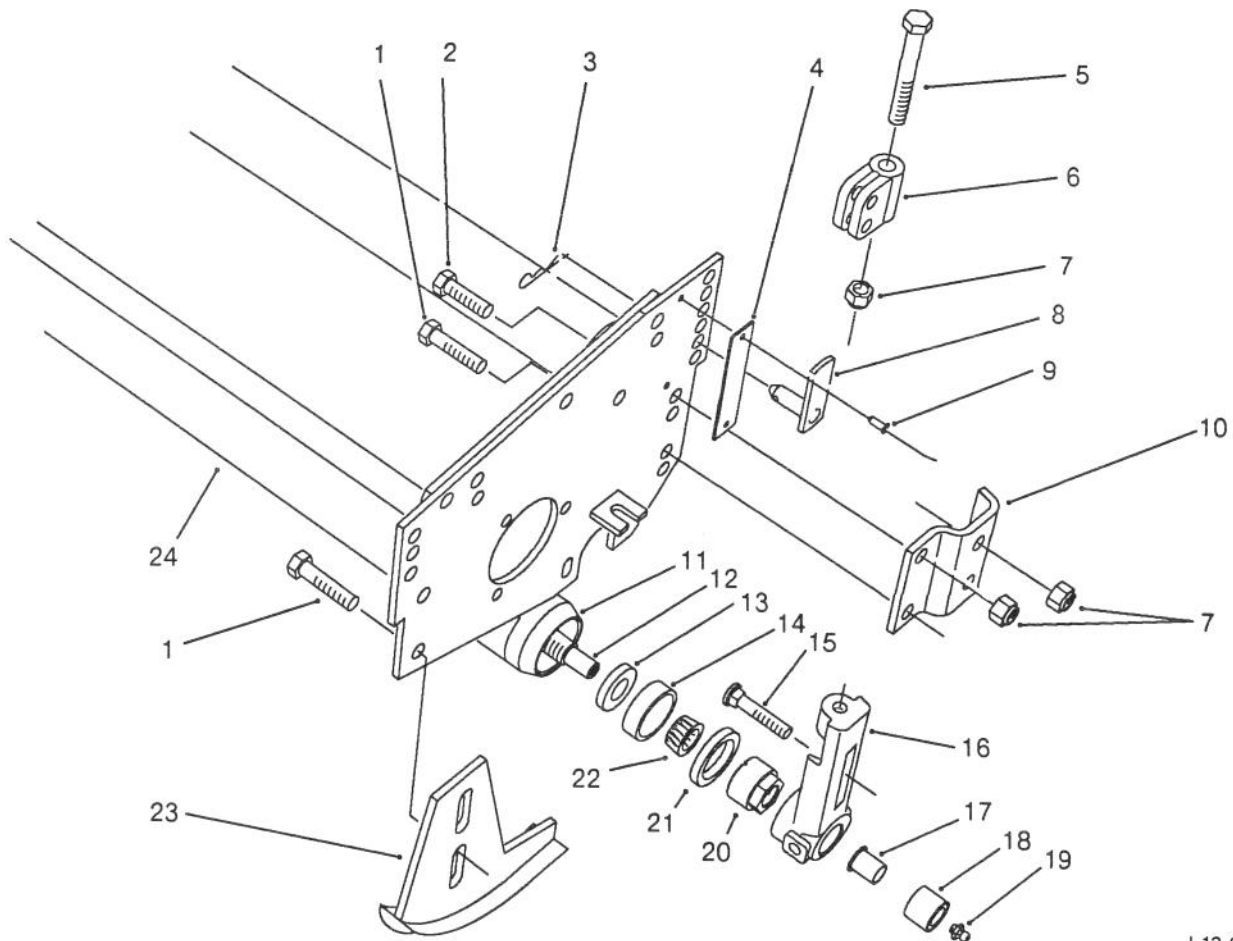
5 BLADE CUTTING UNIT REEL ASSEMBLY (Continued)

Ref. No.	Part No.	Description	No. Used
39	251-319	Flange - Bearing (Lube)	2
*	302-11	Fitting - Grease	2
40	251-320	Bearing	2
41	251-229	Flange - Bearing	2
42	3296-29	Nut - Lock	11
43	3217-6	Nut	1
44	61-0970	Housing - Bedbar Adj.	1
45	56-9510	Bushing Assy	2
46	56-9520	Bushing - Flanged	2
47	57-4910	Screw - Special	10
48	62-5180	Bedknife - 7 In. Reel	1
49	61-1210	Bedbar	1
50	61-1010	Bedbar Housing	1
51	57-5190	Screw - Adjustment	2
52	3218-18	Nut - Jam	2
53	61-1950	Washer - Bedbar	1
54	3256-56	Washer - Flat	1
55	3253-4	Washer - Lock	1
56	322-3	Screw - Cap Hex. Hd.	1

Ref. No.	Part No.	Description	No. Used
57	61-0270	Reel Assy. - 5 Blade (Left C.U.)	1
*	61-0260	Reel Assy. - 5 Blade (Right & Rear C.U.)	1
58	61-0660	Reel Frame	1
59	323-7	Screw - Cap Hex. Hd. (Use 4 screws on rear cutting unit)	2
60	3220-18	Nut - Jam	1
61	27-1850	Washer	1
62	61-1320	Sideplate - Reel	1
63	3296-45	Nut - Lock	1
64	302-18	Fitting - Grease	1
65	62-7120	Spacer	1
66	62-5070	Decal - Warning	1
67	3256-26	Washer - Flat (Use 2 washers on rear cutting unit)	1

NOTE: Front left cutting unit shown.

*Not Illustrated



I.12.914.26

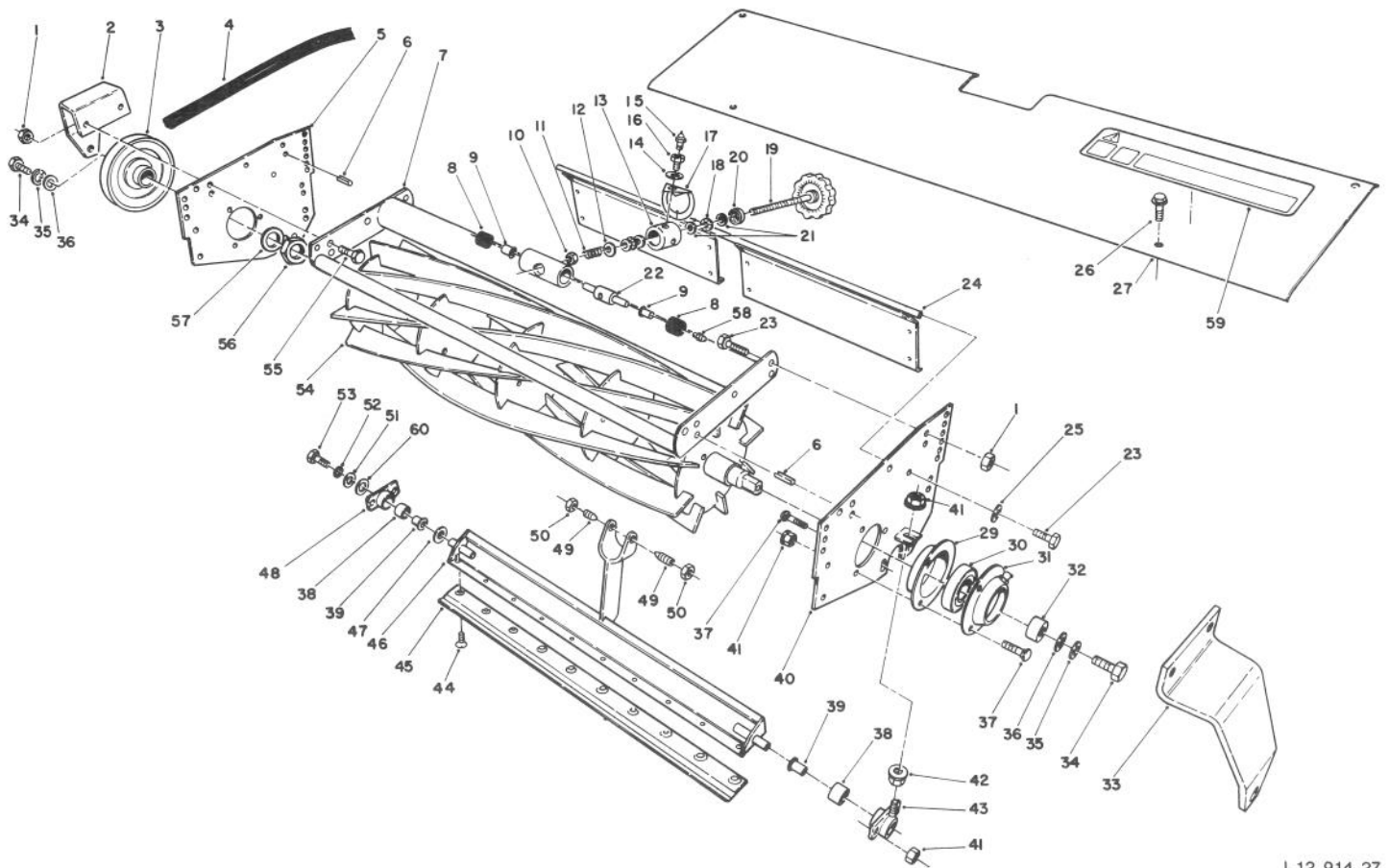
5 BLADE CUTTING UNIT ROLLER ASSEMBLY

Ref. No.	Part No.	Description	No. Used
1	323-7	Screw - Cap Hex. Hd.	3
2	323-6	Screw - Cap Hex. Hd.	5
3	3290-467	Cotter - Hairpin	2
4	61-3810	Plate - HOC	2
5	61-0790	Screw - Cap Hex. Hd.	2
6	61-0420	Support - HOC	2
7	3296-39	Nut - Lock	9
8	61-0630	Pin - HOC	2
9	3290-55	Rivet - Pop	4
10	61-0910	Bracket - Angle	2
11	61-0380	Cap - Roller	2
12	61-0400	Shaft - Roller	1
13	253-116	Seal - Inner	2
14	254-79	Cup - Bearing	2

Ref. No.	Part No.	Description	No. Used
15	3231-2	Bolt - Carriage	2
16	61-0430	Bracket - Rear	2
17	56-9520	Bushing - Flanged	1
18	56-9510	Bushing Assy.	2
19	302-5	Fitting - Grease	2
20	61-0370	Nut - Adjustment	2
21	253-143	Seal - Outer	2
22	254-78	Cone - Bearing	2
23	61-0650	Skid	2
24	62-7100	Tube Assembly (Incl. Ref. #11)	1
*	61-0410	Roller Assembly (Incl. Ref. #11-14, 19-22 & 24)	1

NOTE: Front left cutting unit shown.

*Not Illustrated



I.12.914.27

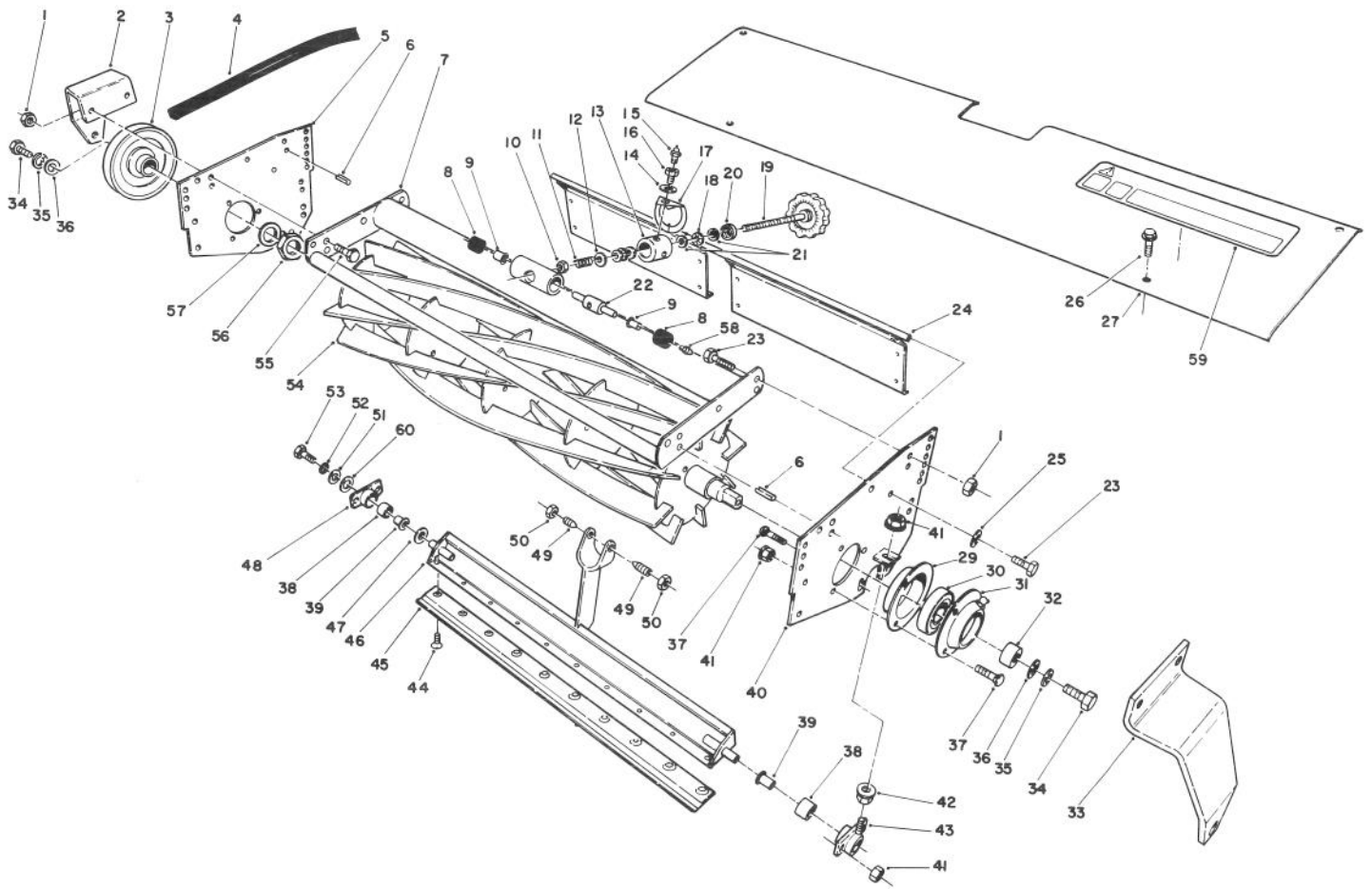
8 BLADE CUTTING UNIT REEL ASSEMBLY

Ref. No.	Part No.	Description	No. Used
1	3296-39	Nut - Lock	8
2	61-0900	Bracket - Tensioner/Carrier (Use 2 Brackets on Rear Cutting Unit)	1
3	61-0150	Pulley - Reel (8 Blade)	1
4	61-3380	V-Belt - Reel	1
5	61-1320	Sideplate	1
6	32121-36	Pin - Roll	4
7	61-0930	Frame - Reel	1
8	62-5510	Rubber Bushing Assembly	2
9	52-2890	Bushing - Flanged (Nylon)	2
10	3296-62	Nut - Lock	1
11	57-5270	Spring - Compression	1
12	29-8870	Washer	1
13	52-2980	Pivot - Single Point Adjust	1
14	3256-25	Washer - Flat	1
15	302-5	Fitting - Grease	1
16	52-2990	Capscrew - Spring Retainer	1
17	52-3000	Arm - Spring	1
18	257-6	Bearing - Thrust	2
19	61-1070	Handle - Assy.	1
20	253-84	Seal	1
21	257-5	Washer - Thrust	4

Ref. No.	Part No.	Description	No. Used
22	57-5260	Pin - S.P.A.	1
23	323-6	Screw - Cap Hex. Hd.	6
24	61-1130	Rear Grass Guard	1
25	3253-5	Washer - Lock	2
26	32144-10	Screw - Hex. Washer Hd.	4
27	61-0560	Shield - Top	1
29	251-229	Flange - Bearing	2
30	251-320	Bearing	2
31	251-319	Flange - Bearing (Lube)	2
*	302-11	Fitting - Grease	2
32	61-0500	Spacer - Reel	1
33	61-0890	Bracket - Carrier	1
34	3211-4	Screw - Cap Hex. Hd.	2
35	3253-21	Washer - Lock	2
36	5-0838	Washer	2
37	3230-20	Bolt - Carriage	10
38	56-9510	Bushing Assy.	2
39	56-9520	Bushing - Flanged	2
40	61-0940	Sideplate - Adjust	1
41	3296-29	Nut - Lock	11
42	3217-6	Nut	1
43	61-0970	Housing - Bedbar Adj.	1
44	57-4910	Screw - Special	10

NOTE: Front left cutting unit shown.

*Not Illustrated



I.12.914.27

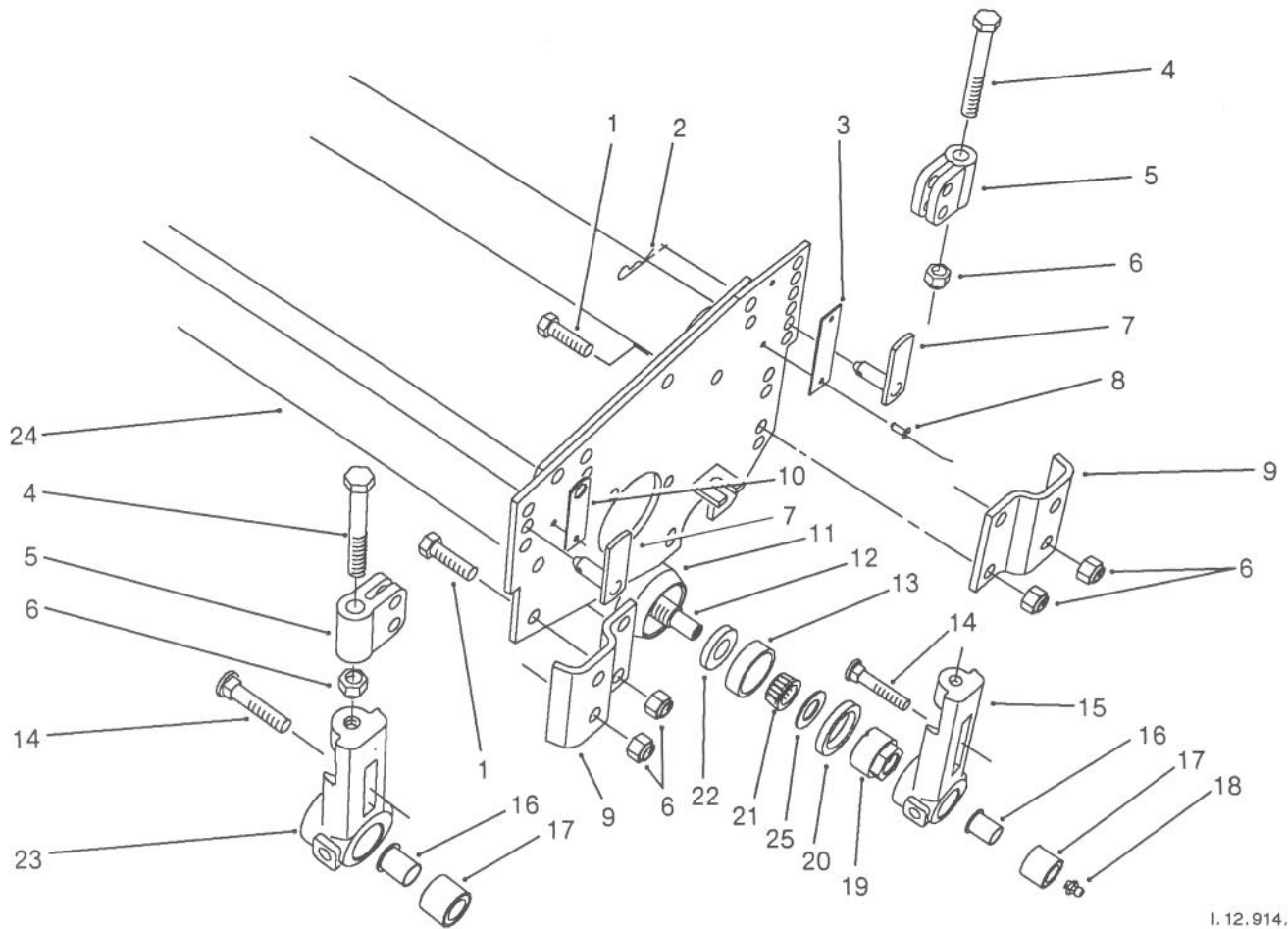
8 BLADE CUTTING UNIT REEL ASSEMBLY (Continued)

Ref. No.	Part No.	Description	No. Used
45	62-5180	Bedknife - 7 In. Reel	1
46	61-1210	Bedbar	1
47	61-1950	Washer - Bedbar	1
48	61-1010	Bedbar Housing	1
49	57-5190	Screw - Adjustment	2
50	3218-18	Nut - Jam	2
51	3256-56	Washer - Flat	1
52	3253-4	Washer - Lock	1
53	322-3	Screw - Cap Hex. Hd.	1

Ref. No.	Part No.	Description	No. Used
54	61-0271	Reel Assy. - 8 Blade (Left C.U.)	1
*	61-0261	Reel Assy. - 8 Blade (Right & Center C.U.)	1
55	323-7	Screw - Cap Hex. Hd.	4
56	3220-18	Nut - Jam	1
57	27-1850	Washer	1
58	302-18	Fitting - Grease	1
59	62-5070	Decal - Warning	1
60	62-7120	Spacer	1

NOTE: Front cutting unit shown.

*Not Illustrated



I. 12. 914. 28A

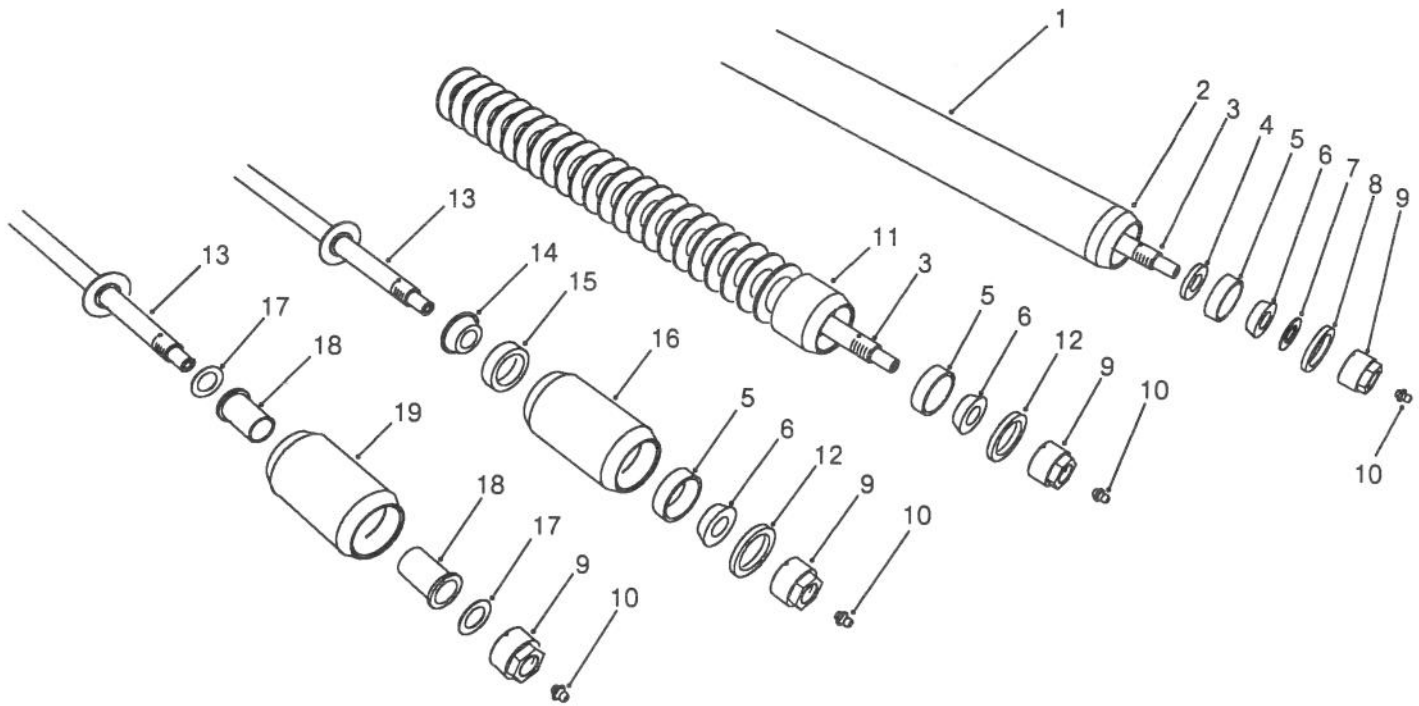
8 BLADE CUTTING UNIT ROLLER ASSEMBLY

Ref. No.	Part No.	Description	No. Used
1	323-6	Screw - Cap Hex. Hd.	8
2	3290-467	Cotter - Hairpin	4
3	61-3800	Plate - HOC Rear	2
4	61-0790	Screw - Cap Hex. Hd.	4
5	61-0420	Support - HOC	4
6	3296-39	Nut - Lock	16
7	61-0630	Pin - HOC	4
8	3290-55	Rivet - Pop	6
9	61-0910	Bracket - Angle	4
10	61-3790	Plate - HOC Front	2
11	61-0380	Cap - Roller	2
12	61-0400	Shaft - Roller	1
13	254-79	Cup - Bearing	2
14	3231-2	Bolt - Carriage	4
15	61-0430	Bracket - Rear	2

Ref. No.	Part No.	Description	No. Used
16	56-9520	Bushing - Flanged	2
17	56-9510	Bushing	4
18	302-5	Fitting - Grease	2
19	61-0370	Nut - Adjustment	2
20	253-143	Seal - Outer	2
21	254-78	Cone - Bearing	2
22	253-116	Seal - Inner	2
23	61-0440	Bracket - Front	2
24	62-7100	Tube Assembly (Incl. Ref. #11)	1
25	62-7660	Washer - Shim (not used on all full roller assemblies)	2
*	61-0410	Full Roller Assembly (Incl. Ref. #11-13, 18-22 & 24-25)	1

NOTE: Front left cutting unit shown.

*Not Illustrated



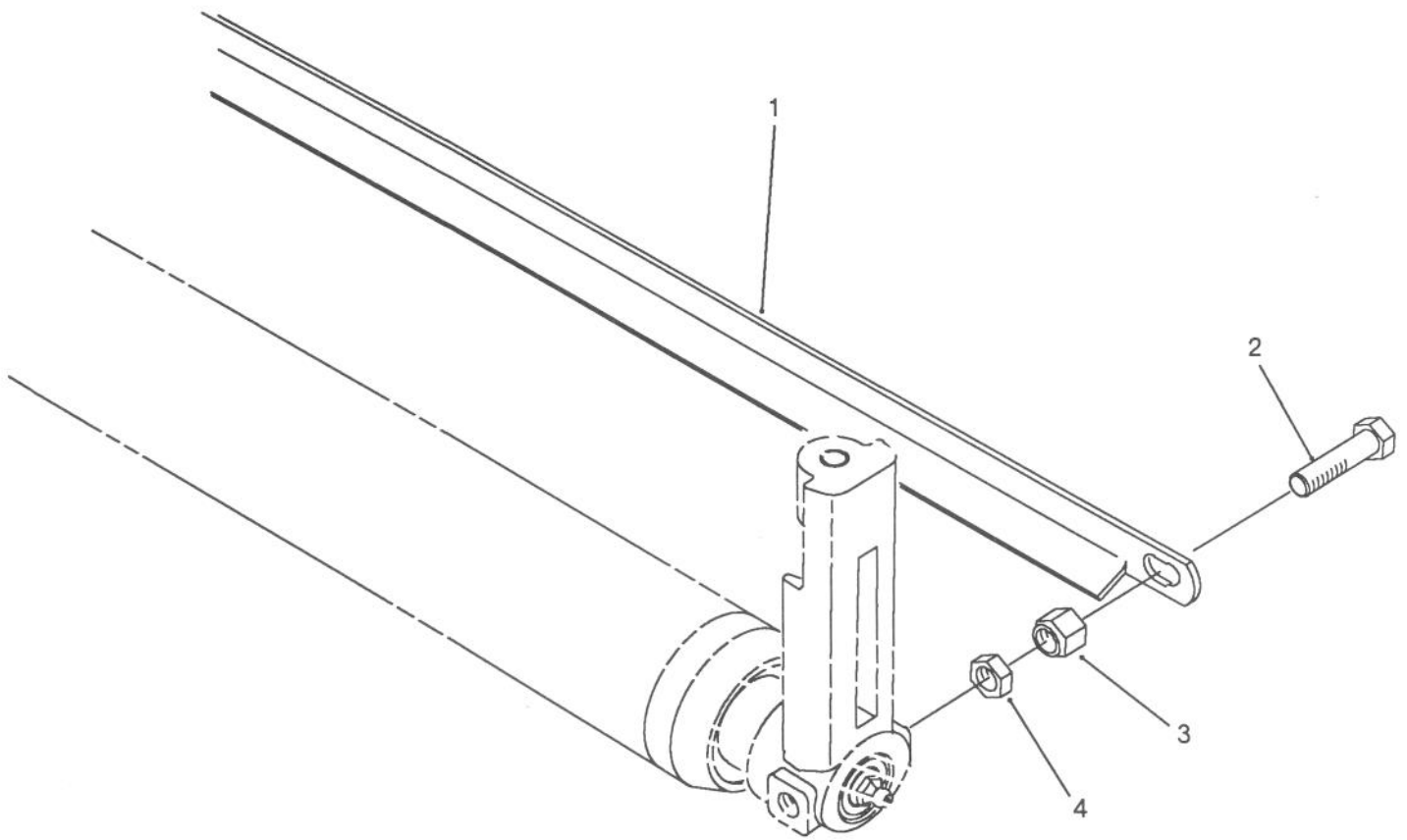
I. 12.914.30

CUTTING UNIT ROLLER OPTIONS

Ref. No.	Part No.	Description	No. Used
1	62-7100	Full Roller Tube Assembly (Incl. Ref. #2)	1
2	61-0380	Cap - Full Roller	2
3	61-0400	Shaft - Full/Wiehle Roller	2
4	253-116	Seal - Inner	2
5	254-79	Cup - Bearing (Outer)	6
6	254-78	Cone - Bearing (Outer)	6
7	62-7660	Washer - Shim (not used on all full roller assemblies)	2
8	253-143	Seal - Outer	2
9	61-0370	Nut - Adjustment	8
10	302-5	Fitting - Grease	8
11	63-5160	Wiehle Roller Weld Assy.	1
12	253-146	Seal - Outer	4
13	62-4990	Shaft - Sectional Roller	2
14	252-107	Cone - Bearing (Inner)	2
15	252-106	Cup - Bearing (Inner)	2
16	62-4980	Roller - Sectional	2
17	3-6498	Washer - Thrust	4

Ref. No.	Part No.	Description	No. Used
18	256-117	Bushing - Flanged	4
19	63-5060	Roller - Anti-Scalp	2
*	61-0410	Full Roller Assy. (Incl. Ref. #1-10)	1
*	62-7410	Wiehle Roller Assy. (Incl. Ref. #3, 5-6 & 9-12)	1
*	62-4970	Sectional Roller Assy. (Incl. Ref. #5-6, 9-10 & 13-16)	1
*	63-5090	Anti-Scalp Roller Assy. (Incl. Ref. #9-10, 13 & 17-19)	1
*	03447	Full Roller Kit (Incl. 3 No. 61-0410)	1
*	03450	Wiehle Roller Kit (Incl. 3 No. 62-7410)	1
*	03445	Sectional Roller Kit (Incl. 3 No. 62-4970)	1
*	03447	Anti-Scalp Roller Kit (Incl. 3 No. 63-5090)	1

*Not Illustrated

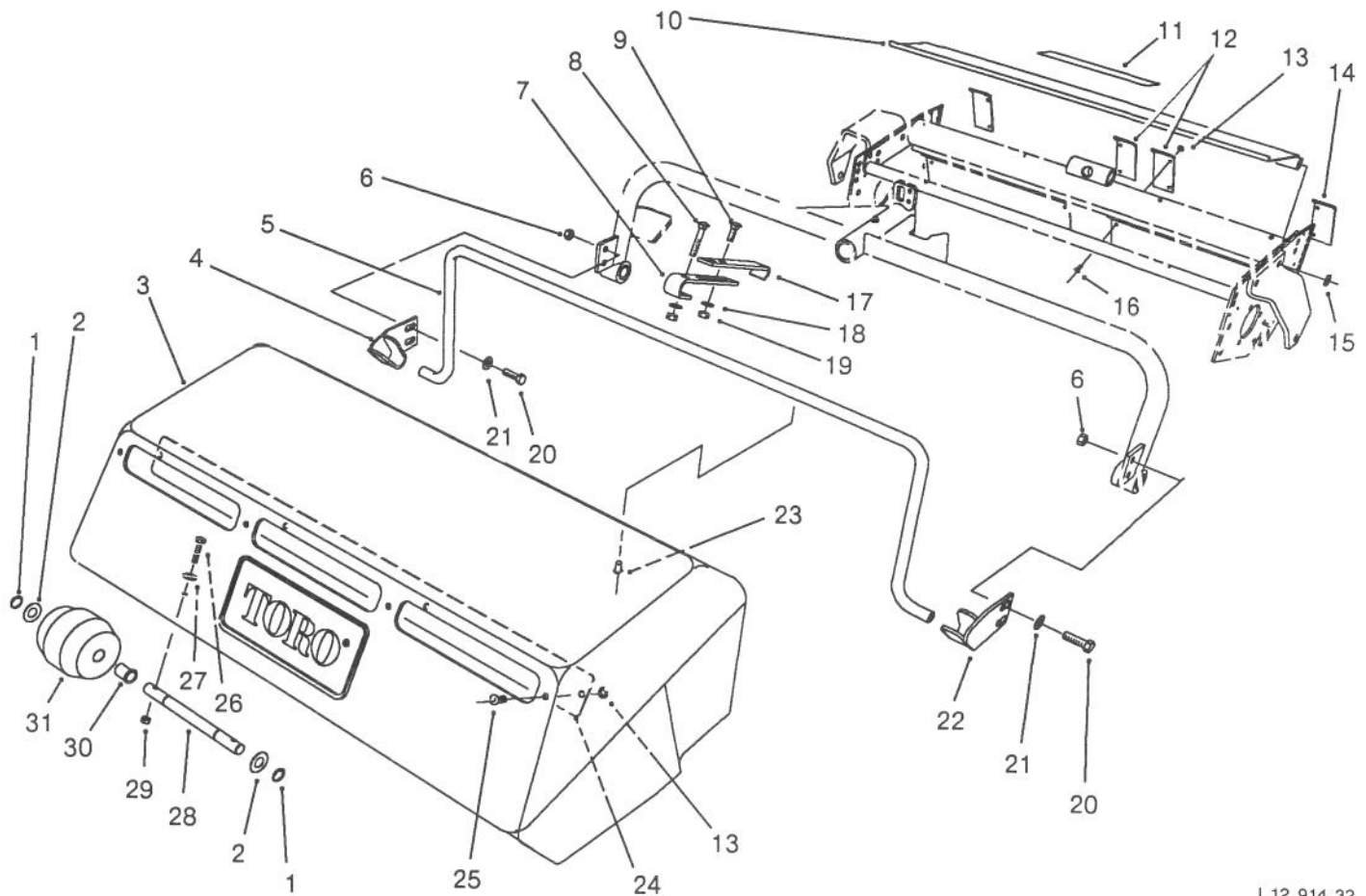


I.12.914.31

CUTTING UNIT ROLLER SCRAPER KIT PART NO. 60-9560 (Optional)

Ref. No.	Part No.	Description	No. Used
1	61-0590	Scraper - Roller	1
2	323-7	Screw - Cap Hex. Hd.	2

Ref. No.	Part No.	Description	No. Used
3	3296-59	Nut - Lock	2
4	3218-3	Nut - Jam	2



I.12.914.32

GRASS COLLECTION SYSTEM MODEL NO. 03433 (Optional) (FRONT CUTTING UNIT BASKET ASSEMBLY)

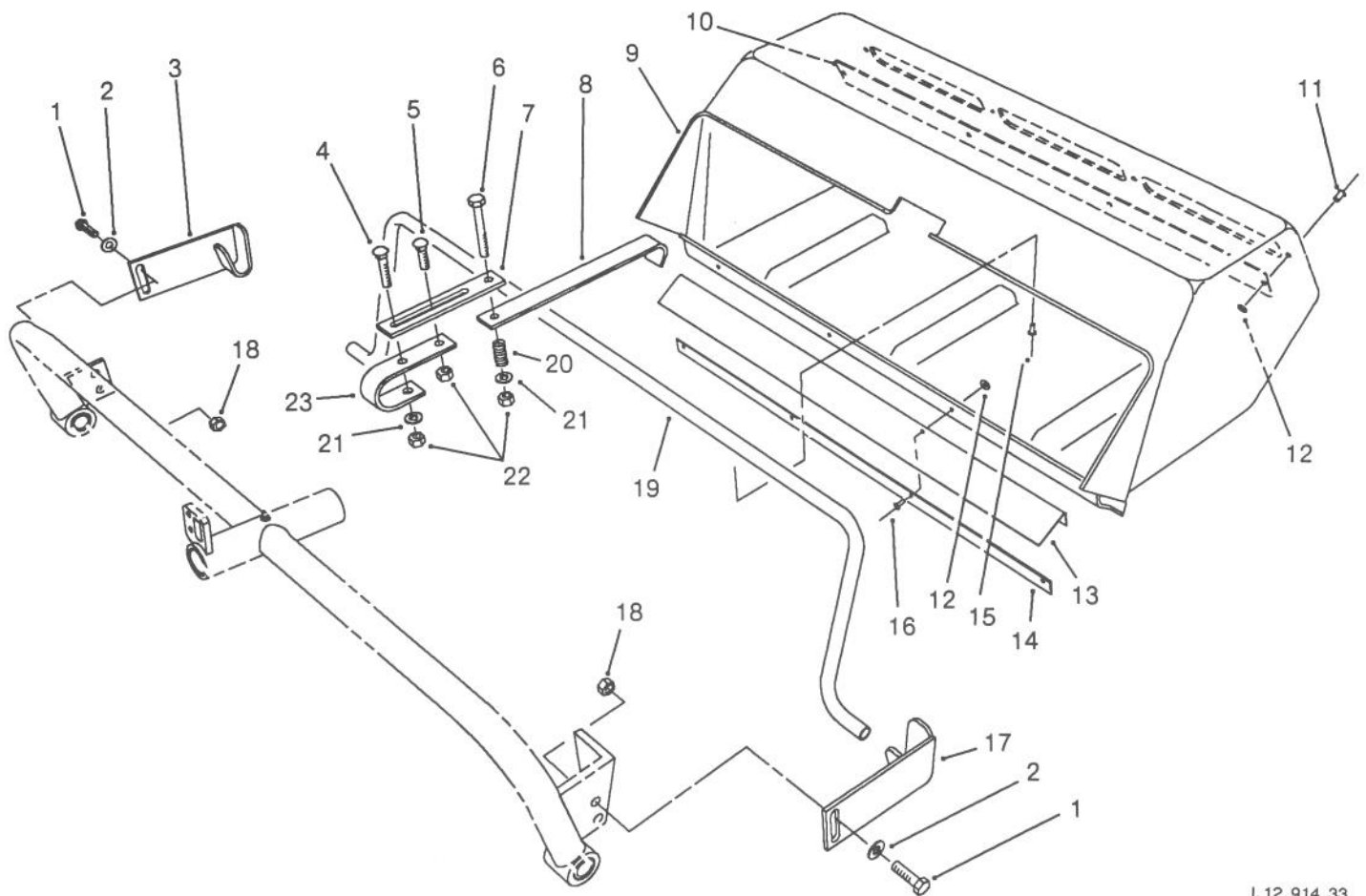
Ref. No.	Part No.	Description	No. Used
1	32120-64	Ring - Snap	8
2	3-9274	Spacer - Wheel	8
3	61-0210	Basket - Grass (Front)	2
4	61-1280	Bracket - Basket R.H.	2
5	61-1190	Support - Basket (Front)	2
6	3296-39	Nut - Lock	8
7	61-3160	Hanger - Basket (Front)	2
8	3230-5	Bolt - Carriage	2
9	3230-2	Bolt - Carriage	4
10	61-0750	Deflector - Grass	2
11	62-5070	Decal - Warning	2
12	61-3290	Cover - Middle	4
13	3256-49	Washer - Flat	32
14	61-3280	Cover - End	4
15	3253-21	Washer - Lock	4
16	3269-23	Rivet - Pop	24
17	62-7230	Hanger - Adjustable (Front)	2

Ref. No.	Part No.	Description	No. Used
18	3256-23	Washer - Flat	6
19	3296-29	Nut - Lock	6
20	323-7	Screw - Cap Hex. Hd.	8
21	3256-24	Washer - Flat	8
22	61-1270	Bracket - Basket L.H.	2
23	3269-18	Rivet - Pop	20
24	61-3170	Baffle - Grass	2
25	3269-22	Rivet - Pop	8
26	321-8	Screw - Cap Hex. Hd.	8
27	3256-2	Washer - Flat	8
28	5-2891	Shaft - Wheel	4
29	32153-4	Nut - Lock	8
30	256-90	Bushing - Flange	8
31	4-7439	Wheel Assembly (Incl. Ref. #30)	4
*	61-1330	Front Grass Basket Assy. (Complete)	2

NOTE: Left Front Cutting Unit Shown.

NOTE: Model No. 03433 Includes 2 Front and 1 Rear Basket Assemblies.

*Not Illustrated



I.12.914.33

GRASS COLLECTION SYSTEM MODEL 03433 (Opt.) (Cont.) (REAR CUTTING UNIT BASKET ASSEMBLY)

Ref. No.	Part No.	Description	No. Used
1	323-7	Screw - Cap Hex. Hd.	4
2	3256-24	Washer - Flat	4
3	61-1260	Bracket - Basket R.H.	1
4	3230-8	Bolt - Carriage	1
5	3230-2	Bolt - Carriage	1
6	322-7	Screw - Cap Hex. Hd.	1
7	62-7490	Plate - Hanger	1
8	62-7500	Hanger - Basket (Rear)	1
9	61-0220	Basket - Grass (Rear)	1
10	61-3170	Baffle - Grass	1
11	3269-22	Rivet - Pop	4
12	3256-49	Washer - Flat	8
13	62-5130	Flap - Rubber	1

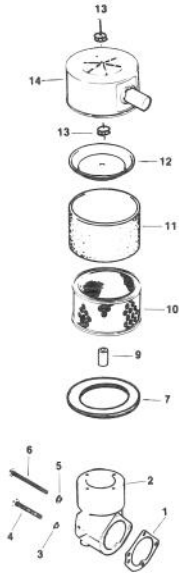
Ref. No.	Part No.	Description	No. Used
14	63-8740	Strap - Basket	1
15	3269-18	Rivet - Pop	10
16	3290-282	Rivet - Pop	4
17	61-1250	Bracket - Basket L.H.	1
18	3296-39	Nut - Lock	4
19	61-1290	Support - Basket (Rear)	1
20	63-4220	Spring - Compression	1
21	3256-23	Washer - Flat	2
22	3296-29	Nut - Lock	3
23	62-7480	Bracket - Hanger	1
*	61-1340	Rear Grass Basket Assy. (Complete)	1

Note: Model No. 03433 Includes 2 Front and 1 Rear Basket Assemblies.

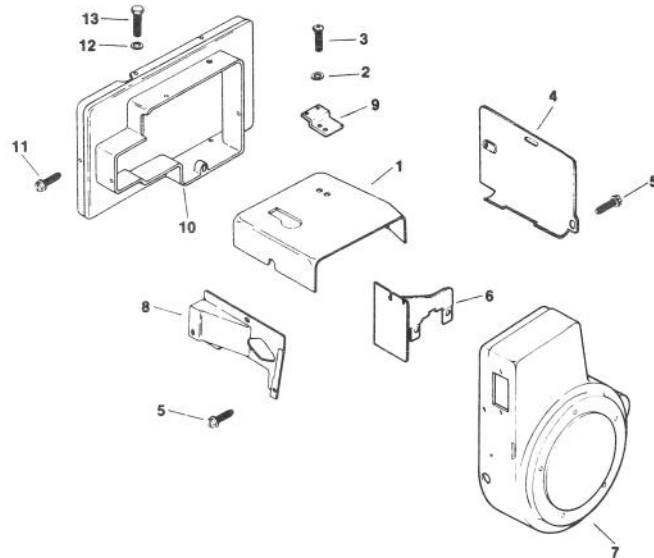
*Not Illustrated

ENGINE KOHLER MODEL NO. M16 SPEC. NO. 711526

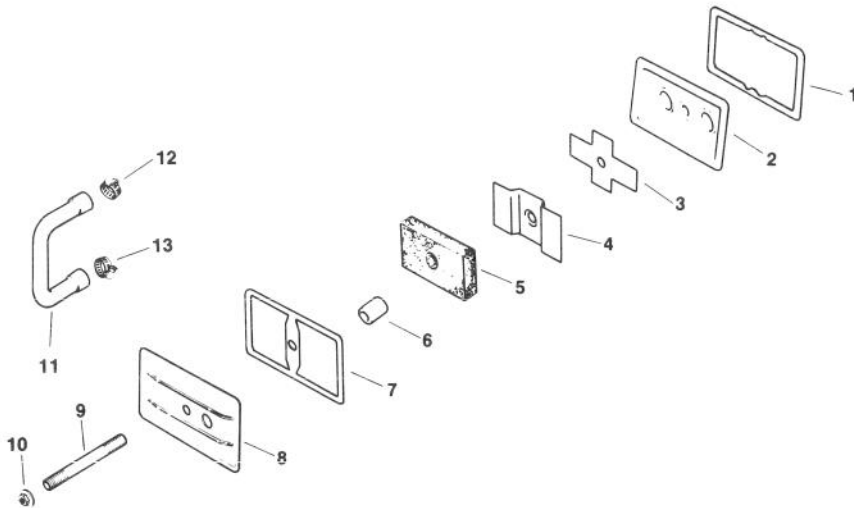
Group 1



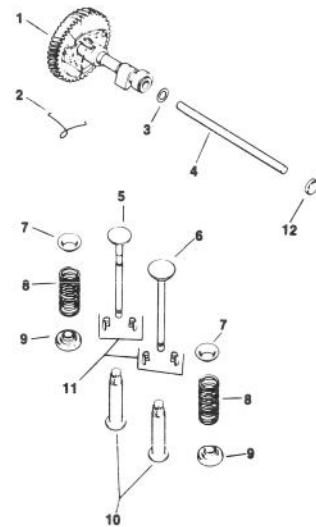
Group 2



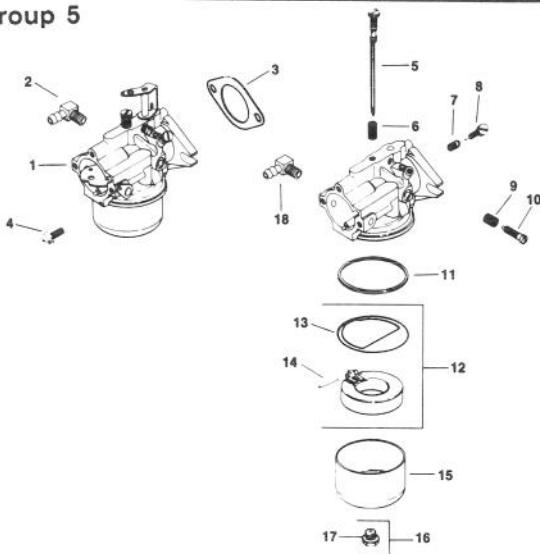
Group 3



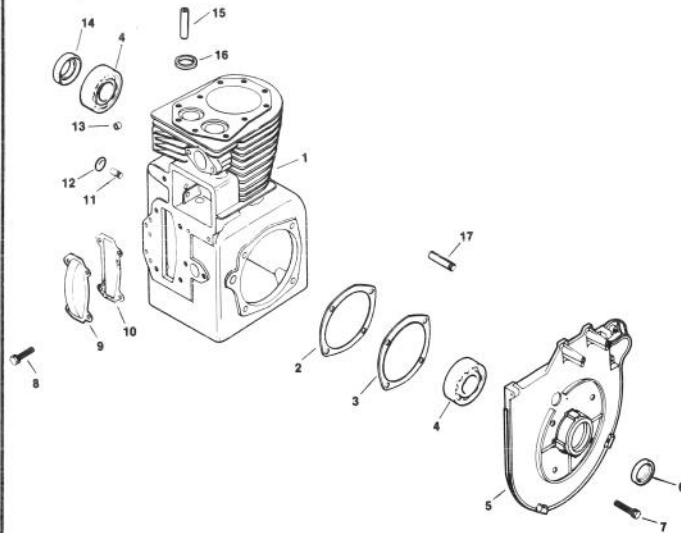
Group 4



Group 5



Group 7



ENGINE KOHLER MODEL NO. M16 SPEC. NO. 711526

Ref. No.	Part No.	Description	No. Used
AIR INTAKE - Group 1			
1	277069	Gasket - Air Cleaner Elb.	1
2	52 054 26	Elbow - Air Cleaner	1
3	X-22-9	Washer - ITLW	2
4	X-50-57	Screw - Pan Hd.	2
5	X-25-79	Washer - Plain	1
6	X-50-37	Screw - Pan Hd.	1
7	47 041 11	Gasket - Base	1
9	231032	Seal	1
10	45 083 02	Element	1
11	52 083 02	Precleaner	1
12	52 082 04	Cover - Cleaner Element	1
†13		Nut - Lock	2
14	52 096 34	Cover - Air Cleaner	1
*	25 113 07	Decal - Air Cleaner	1
BAFFLES & SHROUD			
Group 2			
1	45 063 08	Baffle - Head	1
2	X-25-53	Washer - Plain	1
3	47 086 08	Screw - Pozidrive T.H.	1
4	47 063 10	Baffle - Cylinder	1
5	52 086 11	Screw - Hex. Washer Hd.	8
6	47 063 07	Baffle - Inner	1
7	47 027 42	Housing - Blower	1
8	47 063 06	Baffle - Side Air	1
9	47 126 23	Bracket - Air Duct	1
10	47 755 33	Kit - Air Duct	1
11	X-67-64	Screw - Hex. Washer Hd.	3
12	X-25-20	Washer - Plain	1
13	X-154-4	Screw - Cap Hex. Hd.	1
BREATHER & VENT			
Group 3			
1	235048	Gasket - Breather Plate	1
2	235631	Plate - Breather	1
3	235047	Reed - Breather	1
4	235117	Baffle - Breather	1
5	235118	Filter - Breather	1
6	231032	Seal - Breather	1
7	275144	Gasket - Valve Cover	1
8	275839	Cover - Valve	1
9	275220	Stud	1
10	X-799-1	Palnut	1
11	47 326 02	Hose	1
12	X-426-3	Clamp - Hose (Large)	1
13	X-426-9	Clamp - Hose (Small)	1

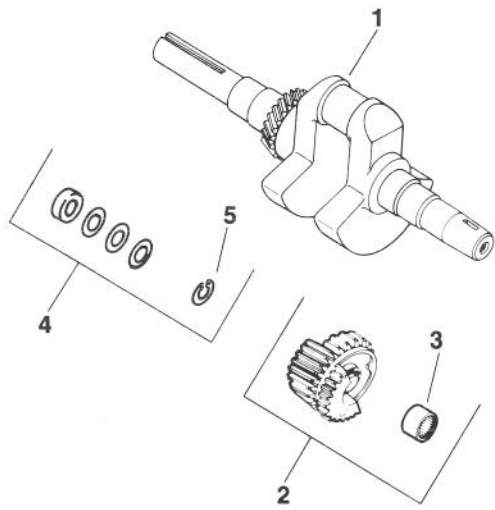
Ref. No.	Part No.	Description	No. Used
CAMSHAFT & VALVES			
Group 4			
1	47 010 11	Camshaft Assembly	1
2	47 089 01	Spring - Actuating	1
3	275066	Spacer (.005)	1
*	275067	Spacer (.010)	1
4	47 380 09	Pin - Camshaft	1
5	237672	Valve - Exhaust	1
6	235582	Valve - Intake	1
7	235011	Retainer - Upper Spring	2
8	235168	Spring - Valve	2
9	230020	Rotator	2
10	D-235327	Tappet	2
11	41 755 10	Kit - Retainer	2
12	X-702-3	Plug - Cup	1
CARBURETOR - Group 5			
1	45 053 76	Carburetor Assembly (Incl. Ref. #5-18)	1
2	25 155 02	Connector - 90° Hose	1
3	47 049 01	Gasket - Carburetor	1
4	X-770-1	Screw - Std. Hd.	2
5	45 103 01	Needle - Main	1
6	200383	Spring - Main	1
7	200380	Spring - Idle Fuel	1
8	275231	Needle - Idle Fuel	1
9	232555	Spring - Idle Speed	1
10	232556	Screw - Idle Speed	1
11	200375	Gasket - Bowl	1
12	25 757 03	Kit - Float	1
13	25 041 02	Gasket - Bowl Baffle	1
14	200376	Pin - Float Hinge	1
15	235448	Bowl - Fuel	1
16	47 100 06	Screw - Bowl Retainer	1
17	200372	Gasket - Bowl Ret. Screw	1
18	X-391-10	Connector	1
*	25 757 02	Kit - Carburetor Repair	1
*	25 757 05	Kit - Throttle/Choke Repair	1
CRANKCASE - Group 7			
1	45 782 14	Miniblock (Incl. Ref. #13, 15-16)	1
2	47 422 05	Gasket - Shim	A/R
3	47 041 09	Gasket - Bearing Plate	1
4	235376	Bearing - Ball	2
5	47 146 07	Plate - Bearing	1
6	47 032 06	Seal - Front Oil	1
7	X-159-2	Screw - Cap Hex. Hd.	4
8	X-132-6	Screw - Cap Hex. Hd.	4
9	235026	Cover - Camshaft	1
10	235025	Gasket - Camshaft Cover	1
11	235125-S	Shaft - Governor	1
12	X-230-11	Plug - Expansion	1
13	234866	Bearing Gov. Cross Shaft	1
14	47 032 07	Seal - Rear Oil	1
15	230265	Insert - Intake Valve	1
16	235007-S	Guide - Valve	2
17	236559	Shaft - Balance Gear Stub	2
*	45 755 12	Gasket Set W/Seals	1
*	45 004 06	Gasket Set W/O Seals	1

*Not Illustrated

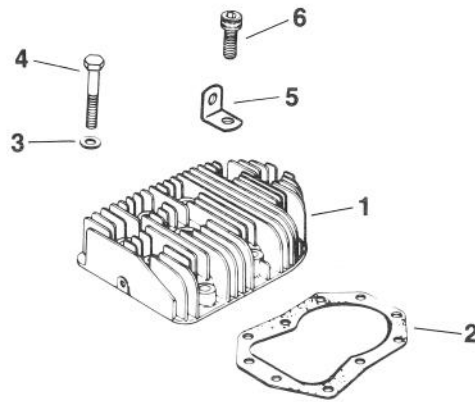
†NOTE: Obtain replacement parts from The Toro Co. (See page 7 Of Parts Catalog)

ENGINE KOHLER MODEL NO. M16 SPEC. NO. 711526 (Cont.)

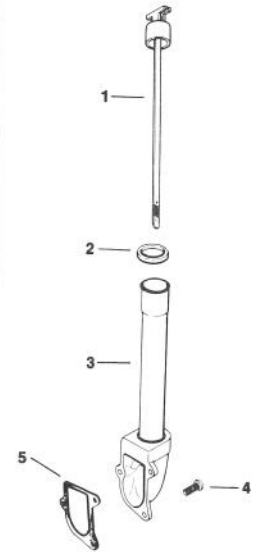
Group 8



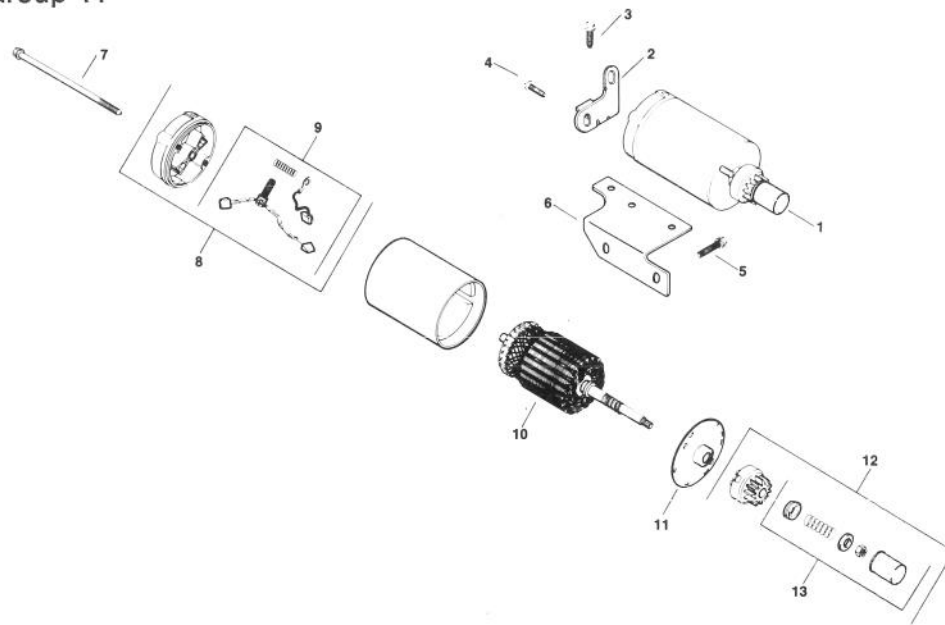
Group 9



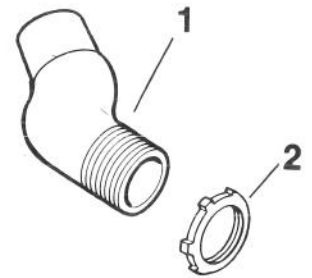
Group 10



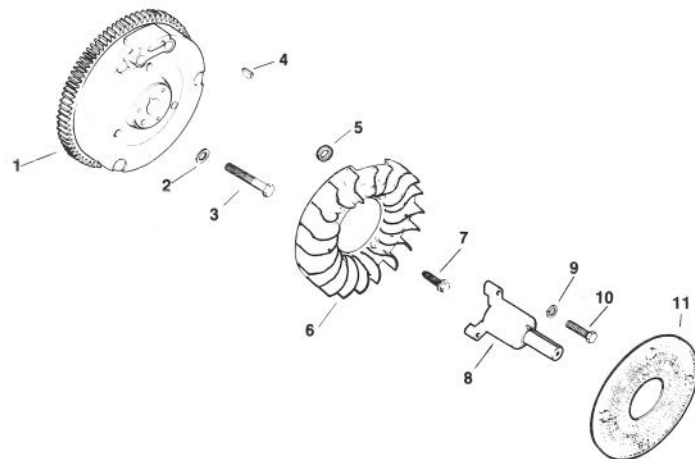
Group 11



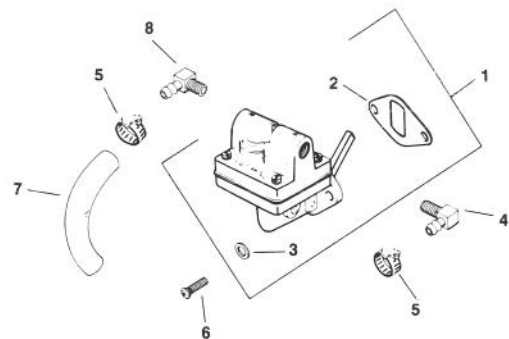
Group 12



Group 13



Group 14



ENGINE KOHLER MODEL NO. M16 SPEC. NO. 711526 (Cont.)

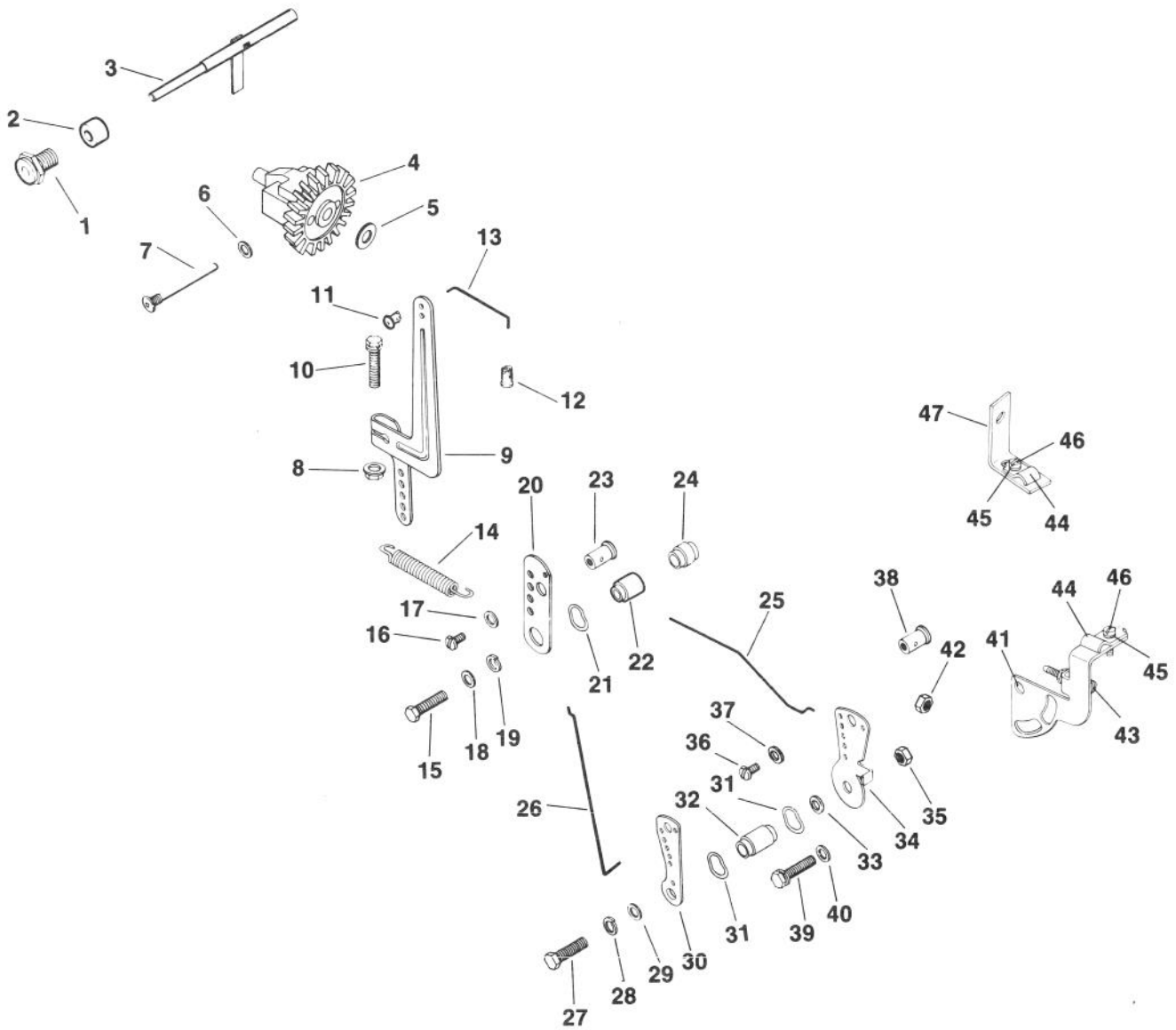
Ref. No.	Part No.	Description	No. Used
CRANKSHAFT - Group 8			
1	45 014 83	Kit - Crankshaft (Includes Flywheel Hardware)	1
2	45 043 03	Gear Assembly	2
3	47 030 01	Bearing - Needle	2
4	47 755 01	Kit - Spacer	1
5	X-269-34	Retainer	2
CYLINDER HEAD Group 9			
1	45 015 09	Head - Cylinder	1
2	45 041 16	Gasket - Head	1
3	270889	Washer - Plain	10
4	270158	Screw - Cap Hex. Hd.	9
5	47 445 02	Strap - Lifting	1
6	47 086 17	Screw - Hex. Socket Hd.	1
DIPSTICK - Group 10			
1	47 038 27	Dipstick	1
2	41 153 01	O-Ring	1
3	47 029 06	Adapter - Oil Fill	1
4	X-131-2	Screw - Flat Hd.	3
5	237064	Gasket - Adapter	1
ELECTRIC STARTER Group 11			
1	41 098 04	Starter Assembly (Incl. Ref. #7-13)	1
2	47 126 24	Brace - Tail	1
3	X-67-83	Screw - Hex. Washer Hd.	1
4	X-67-62	Screw - Hex. Washer Hd.	1
5	X-159-2	Screw - Cap Hex. Hd.	2
6	47 126 29	Bracket - Solenoid	1
7	41 086 19	Bolt - Thru	2
8	41 227 04	Cap - Commutator End	1
9	52 755 15	Kit - Brush	1
10	45 170 02	Armature	1
11	41 227 03	Cap - Drive End	1
12	47 755 07	Kit - Drive	1
13	47 755 13	Kit - Drive Parts	1
*	25 450 03	Tag - Caution	1

Ref. No.	Part No.	Description	No. Used
EXHAUST - Group 12			
1	45 054 04	Elbow - Exhaust	1
2	45 100 01	Nut - Lock	1
FLYWHEEL - Group 13			
1	47 025 53	Flywheel	1
2	52 114 02	Washer - Plain	1
3	25 086 04	Screw - Hex. Hd. Machine	1
4	X-46-3	Key - Woodruff	1
5	25 112 04	Spacer	1
6	25 157 01	Fan	1
7	25 086 14	Screw - Hex. Washer Hd.	4
8	235954	Shaft - Front Drive	1
9	X-22-1	Washer - Lock	4
10	X-7-6	Screw - Cap Hex. Hd.	4
11	25 162 03	Screen - Grass	1
FUEL PUMP - Group 14			
1	47 559 04	Fuel Pump Assembly	1
2	52 041 17	Gasket - Fuel Pump	1
3	X-25-63	Washer - Plain	2
4	X-391-11	Connector - 90° Hose In.	1
5	X-426-9	Clamp - Hose	2
6	X-174-2	Screw - Pozidrive F.H.	2
7	25 353 01	Line - Fuel	1
8	25 155 02	Connector - 90° Hose Out.	1

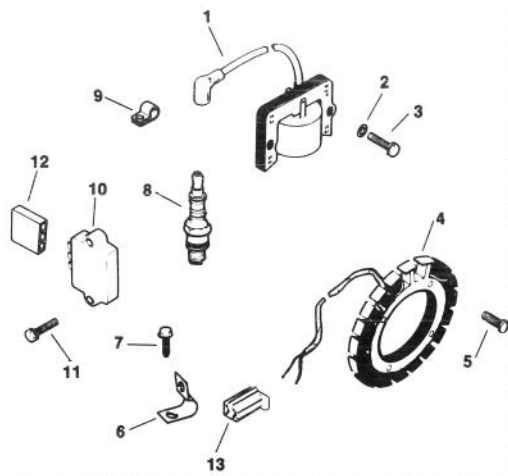
*Not Illustrated

ENGINE KOHLER MODEL NO. M16 SPEC. NO. 711526 (Cont.)

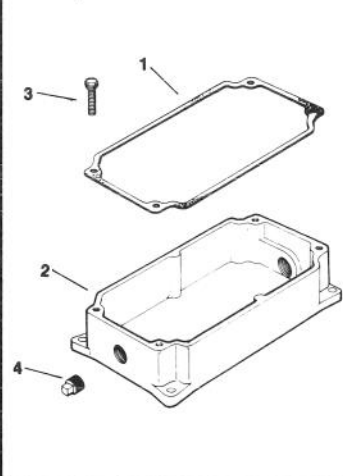
Group 17



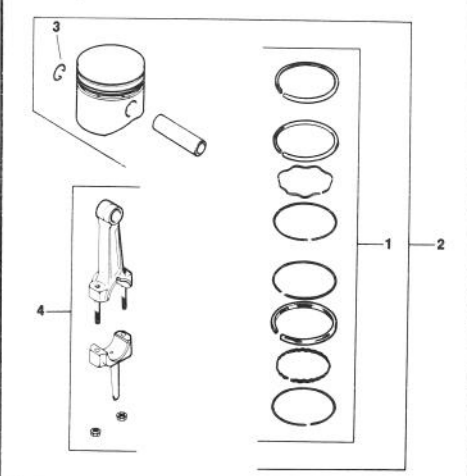
Group 18



Group 21



Group 22



ENGINE KOHLER MODEL NO. M16 SPEC. NO. 711526 (Cont.)

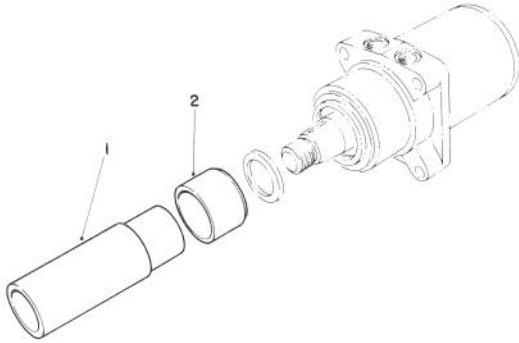
Ref. No.	Part No.	Description	No. Used
GOVERNOR - Group 17			
1	235476	Bushing - Governor Shaft	1
2	X-400-80	Spacer	1
3	A-235256-S	Kit - Governor Shaft	1
4	A-235743-S	Kit - Governor Gear (Includes Thrust Washer)	1
5	237022	Washer - Thrust	1
6	25 468 01	Washer - Plain	1
7	231355	Pin - Governor Stop	1
8	X-799-1	Palnut	1
9	47 090 20	Lever - Governor	1
10	X-776-1	Screw - Cap Hex. Hd.	1
11	47 158 04	Bushing - Linkage Rtng. (White)	1
12	25 158 06	Bushing - Linkage Rtng. (Red)	1
13	47 079 05	Linkage - Governor	1
14	235496	Spring - Governor	1
15	X-5-26	Screw - Cap Hex. Hd.	1
16	X-51-8	Screw - Slt. Pan Hd.	1
17	X-25-102	Washer - Plain	1
18	X-25-63	Washer - Plain	1
19	X-20-1	Washer - Lock	1
20	235086	Bracket - Speed Control	1
21	275690	Washer - Wave	1
22	235085	Spacer	1
23	48 755 10	Kit - Clamp	1
24	X-384-2	Spacer	1
25	47 079 08	Linkage - Throttle	1
26	47 079 01	Linkage - Choke	1
27	X-5-26	Screw - Cap Hex. Hd.	1
28	X-20-1	Washer - Lock	1
29	X-25-63	Washer - Plain	1
30	47 090 05	Lever - Choke Control	1
31	275690	Washer - Wave	2
32	47 112 19	Spacer	1
33	X-25-82	Washer - Plain	1
34	47 090 09	Lever - Throttle Control	1
35	X-81-1	Nut - Hex.	1
36	X-51-8	Screw - Slt. Pan Hd.	1
37	X-25-102	Washer - Plain	1
38	48 755 10	Kit - Clamp	1
39	X-132-1	Screw - Cap Hex. Hd.	1
40	X-25-63	Washer - Plain	1
41	47 126 13	Bracket - Choke	1
42	X-72-4	Nut - Hex.	1
43	232556	Screw	1
44	235778	Clamp - Cable	2
45	X-19-1	Washer - Lock	2
46	X-15-5	Screw - Flat Hd. Machine	2
47	47 126 36	Bracket - Choke	1

*Not Illustrated

Ref. No.	Part No.	Description	No. Used
IGNITION - Group 18			
1	47 584 01	Module - Ignition	1
2	X-25-79	Washer - Plain	2
3	X-156-1	Screw - Cap Hex. Hd.	2
4	237878	Kit - Stator	1
5	X-778-1	Screw - Pozidrive Pan Hd.	4
6	X-728-1	Clip - Lead	1
7	X-67-59	Screw - Hex. Washer Hd.	1
8	235041-S	Spark Plug	1
9	210181	Clip - Hi-Tension Lead	1
10	41 403 05	Rectifier - Regulator	1
11	X-132-4	Screw - Cap Hex. Hd.	2
12	236602	Connector - Female	1
13	41 155 03	Connector - Male	1
*	47 518 45	Lead - Module-Connector (White W/Diode)	1
*	47 518 46	Lead - Reg.-Connector (Violet)	1
*	47 518 43	Lead - Service (White W/Diode)	1
OIL PAN - Group 21			
1	235057	Gasket - Pan	1
2	47 199 10	Pan - Oil	1
3	X-159-3	Screw - Cap Hex. Hd.	4
4	X-75-6	Plug - Square Hd.	2
PISTON & ROD Group 22			
1	45 108 06	Ring Set - Std & .003	1
*	45 108 07	Ring Set - .010	1
*	45 108 08	Ring Set - .020	1
*	45 108 09	Ring Set - .030	1
2	45 874 01	Piston W/Ring Set - Std.	1
*	45 874 02	Piston W/Ring Set - .003	1
*	45 874 03	Piston W/Ring Set - .010	1
*	45 874 04	Piston W/Ring Set - .020	1
*	45 874 05	Piston W/Ring Set - .030	1
3	47 018 01	Retainer - Piston Pin	2
4	45 067 22	Connecting Rod - Std.	1
*	45 067 23	Connecting Rod - .010	1

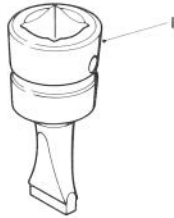
SPECIAL TOOLS

DRIVE MOTOR SEAL INSTALLATION TOOL NO. 19-2660



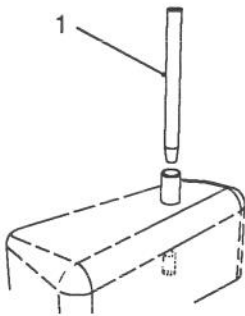
Ref. No.	Part No.	Description	No. Used
1		Driver - Seal	1
2		Holder - Seal	1

BEDKNIFE SCREW TOOL NO. 51-0880



Ref. No.	Part No.	Description	No. Used
1		Tool - Bedknife Screw	1

HYDRAULIC OIL RESERVOIR PLUG NO. 63-4310



Ref. No.	Part No.	Description	No. Used
1		Plug - Hydraulic Oil Reservoir	1

INDEX

Description	Page	Description	Page
Hood Assembly	1-2	Cutting Unit Lift Control Valve Assembly	21
Frame and Steering Assembly	3	Control Valve No. 43-1950	22
Fuel Tank Assembly	4	Seat Assembly Model No. 30756 (Optional)	23
Instrument Panel Assembly	5	Cutting Unit Carrier Frame Assembly	24-25
Electrical Schematic	6	5 Blade Cutting Unit Reel Assembly	26-27
Engine & Clutch Assembly	7	5 Blade Cutting Unit Roller Assembly	28
Electric Clutch Assembly No. 61-0050	8	8 Blade Cutting Unit Reel Assembly	29-30
Hydraulic Schematic	9	8 Blade Cutting Unit Roller Assembly	31
Hydraulic Tank & Battery Assembly	10	Cutting Unit Roller Options	32
Hydraulic Oil Cooler Assembly	11	Cutting Unit Roller Scraper Kit Part No. 60-9590 (Optional)	33
Hydraulic Drive Assembly	12	Grass Collection System Model No. 03433 (Opt.) (Front Cutting Unit Basket Assembly)	34
Hydraulic Pump Assembly No. 61-0080	13	Grass Collection System Model No. 03433 (Opt.) (Rear Cutting Unit Basket Assembly)	35
Traction Controls Assembly	14	Engine Kohler Model No. M16 Spec. No. 711526	36-41
Front Wheel Assembly	15	Special Tools	42
Hydraulic Drive Motor No. 62-9490	16		
Brake Assembly	17		
Jackshaft Assembly	18		
Cutting Unit Lift Assembly	19		
Hydraulic Cylinder No. 61-0090	20		

MAINTENANCE RECORD

Date								

