



## 44in, 48in and 52in Twin Soft Bagger Z100 and Z400 Z Master®

Model No. 78507 - 250000351 and up.

### Parts Catalog

---

#### Ordering Replacement Parts

To order replacement parts, please supply the part number, the quantity, and the description of each part desired.

#### Understanding Reference Numbers

Each Identified part in an illustration has a reference number. The reference number for a part also appears in the parts list, along with other information about the part.

This catalog uses two special reference number formats, one to indicate parts in a service assembly and another to indicate the quantity of a given part in an illustration.

#### Service Assembly Reference Numbers

Parts in service assemblies have reference numbers in the form a:b. The a represents the reference number of the entire service assembly and the b represents a sequential number unique to each part within the service assembly.

For example, a wheel assembly might be identified by reference number 6, the tire by 6:1, the valve by 6:2, and the wheel by 6:3. When you order the assembly identified by reference number 6, you receive all parts identified by reference numbers 6:1, 6:2, and 6:3. However, you may also order any part individually. Reference numbers of this type appear in illustrations and in part lists.

#### Reference Numbers Indicating Quantity

In an illustration, if a reference number indicates more than one part, the reference number has the form nX y. The n represents the quantity of the part, the X is the multiplication symbol, and the y represents the reference number.

For example, in an illustration, the reference number 2X 37 means that two of the parts identified by reference number 37 are indicated.

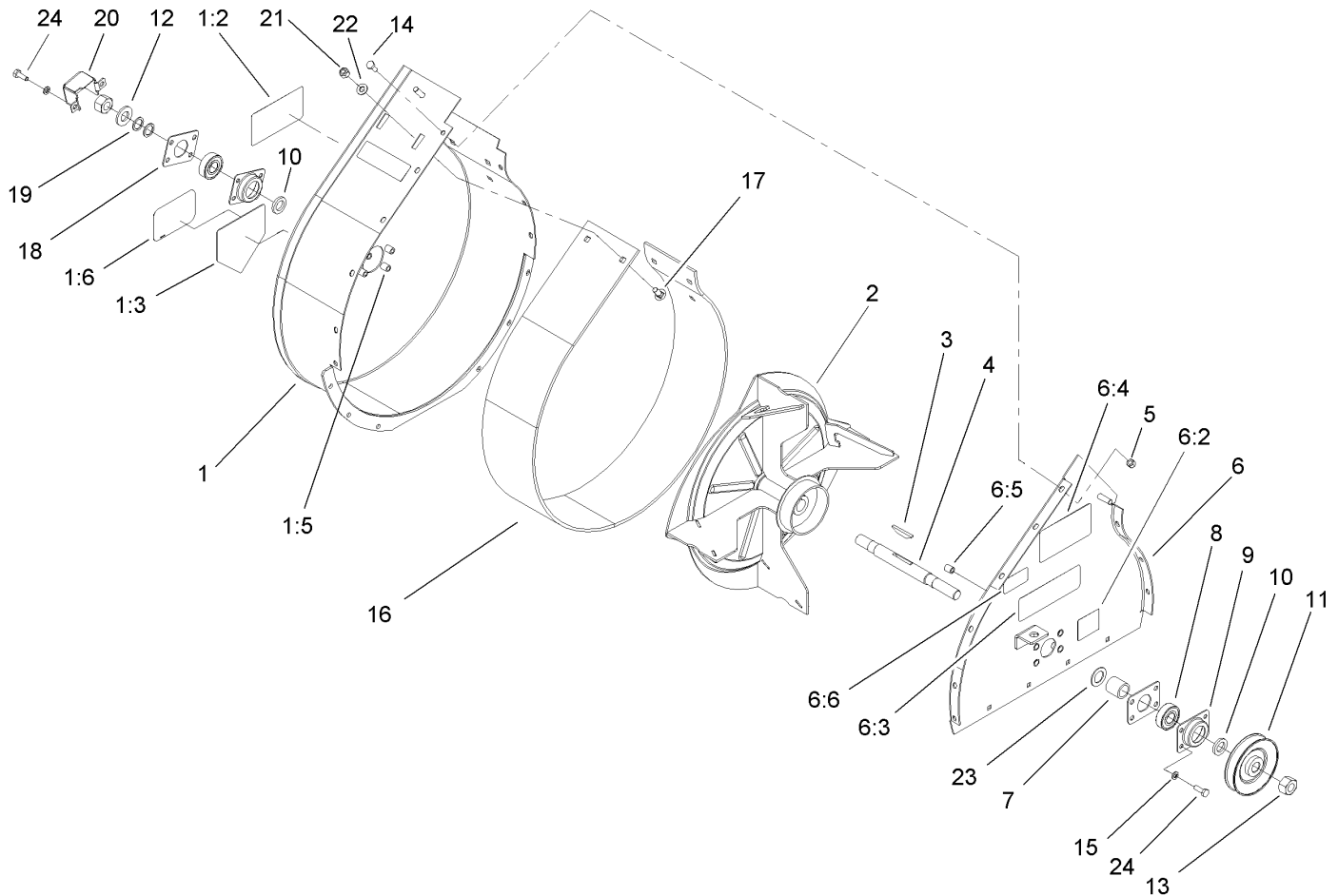
# Contents

Description	Page	Description	Page
Blower Housing Assembly	..... 3	Bagger Mount Assembly	..... 5
Blower and Idler Pulley Assembly	..... 4	Bag Support and Hood Assembly	..... 6
		Bag Assembly	..... 7

## Part Description Abbreviations

Part descriptions in this catalog may include the following abbreviations.

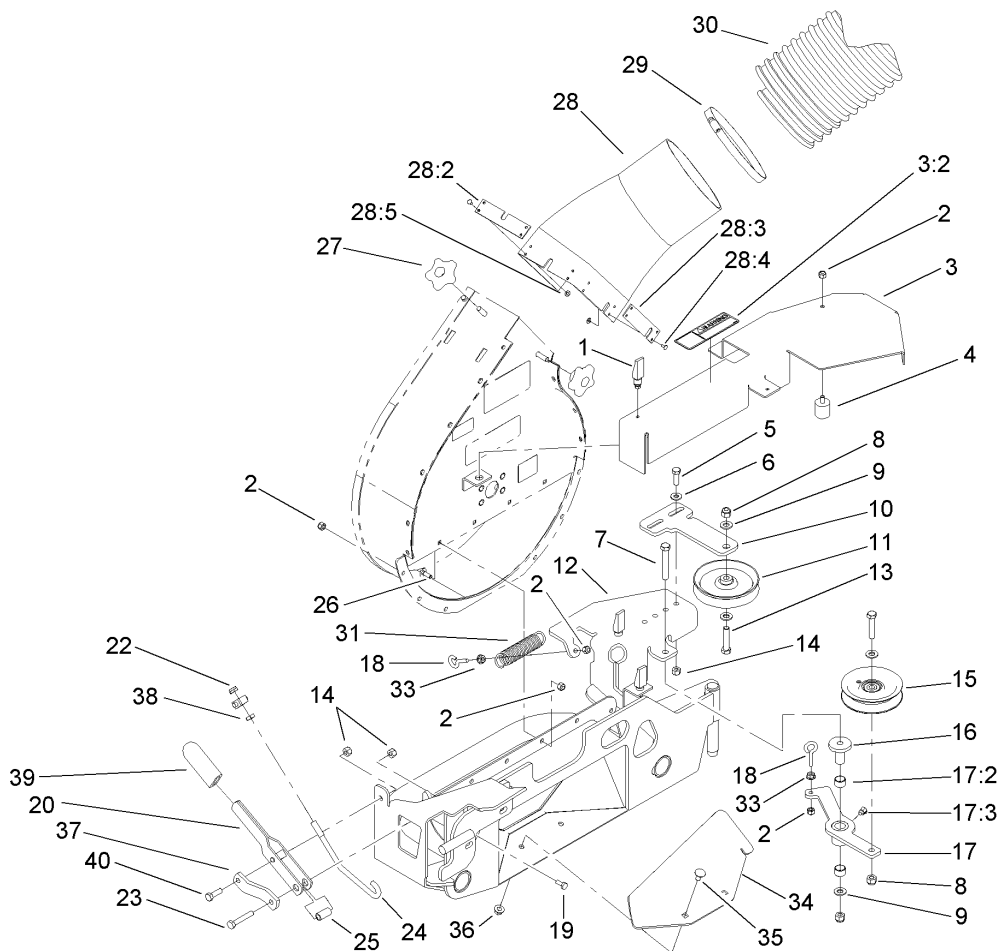
AR. ....	as required	HWHTF. ....	hex washer head thread forming
ASM. ....	assembly	HYD. ....	hydraulic
BBC. ....	Blade Brake Clutch	INC. ....	incorporated
CARR. ....	carriage	LH. ....	left hand
DEG. ....	degrees	NI. ....	nylon insert
EXT. ....	external	NPTF. ....	national pipe thread fine
FH. ....	flat head	PPH. ....	phillips pan head
GA. ....	gauge	PPHTF. ....	phillips pan head thread forming
HF. ....	hex flange	PRH. ....	phillips round head
HH. ....	hex head	PTH. ....	phillips truss head
HHF. ....	hex head flange	PTO. ....	power take off
HHFTF. ....	hex head flange thread forming	RH. ....	right hand
HJ. ....	hex jam	ROPS. ....	roll over protection system
HLH. ....	hex lag head	SFH. ....	slotted fillister head
HOC. ....	height-of-cut	SHH. ....	slotted hex head
HSBH. ....	hex socket button head	SHWH. ....	slotted hex washer head
HSFH. ....	hex socket flat head	SPH. ....	slotted pan head
HSH. ....	hex socket head	SQH. ....	square head
HWH. ....	hex washer head		



## Blower Housing Assembly

Ref	Part No.	Qty.	Description
1	106-8016	1	Blower Housing ASM
1:2	79-0360	1	Decal-Danger
1:3	93-1122	1	Decal-Danger
1:5	32148-6	4	Insert-Nut
1:6	99-2385	1	Decal
2	106-8022-03	1	Impeller ASM
3	3257-40	1	Key-Hi Pro
4	105-5893	1	Shaft-Blower
5	3296-42	9	Nut-Lock, NI
6	106-8019	1	Cover Plate ASM
6:2	88-8950	1	Decal-Warning
6:3	79-0350	1	Decal-Danger
6:4	79-0360	1	Decal-Danger
6:5	32148-6	4	Insert-Nut
6:6	98-4387	1	Decal-Protection, Ear
7	106-2097	1	Spacer
8	38-7820	2	Bearing-Ball
9	37-6730	2	Cup-Bearing
10	63-9710	2	Spacer-Bearing
11	105-5992	1	Pulley ASM
12	9202604	1	Washer-Flat
13	3217-11	2	Nut-Hex
14	321-3	9	Screw-HH
15	3253-3	8	Washer-Lock

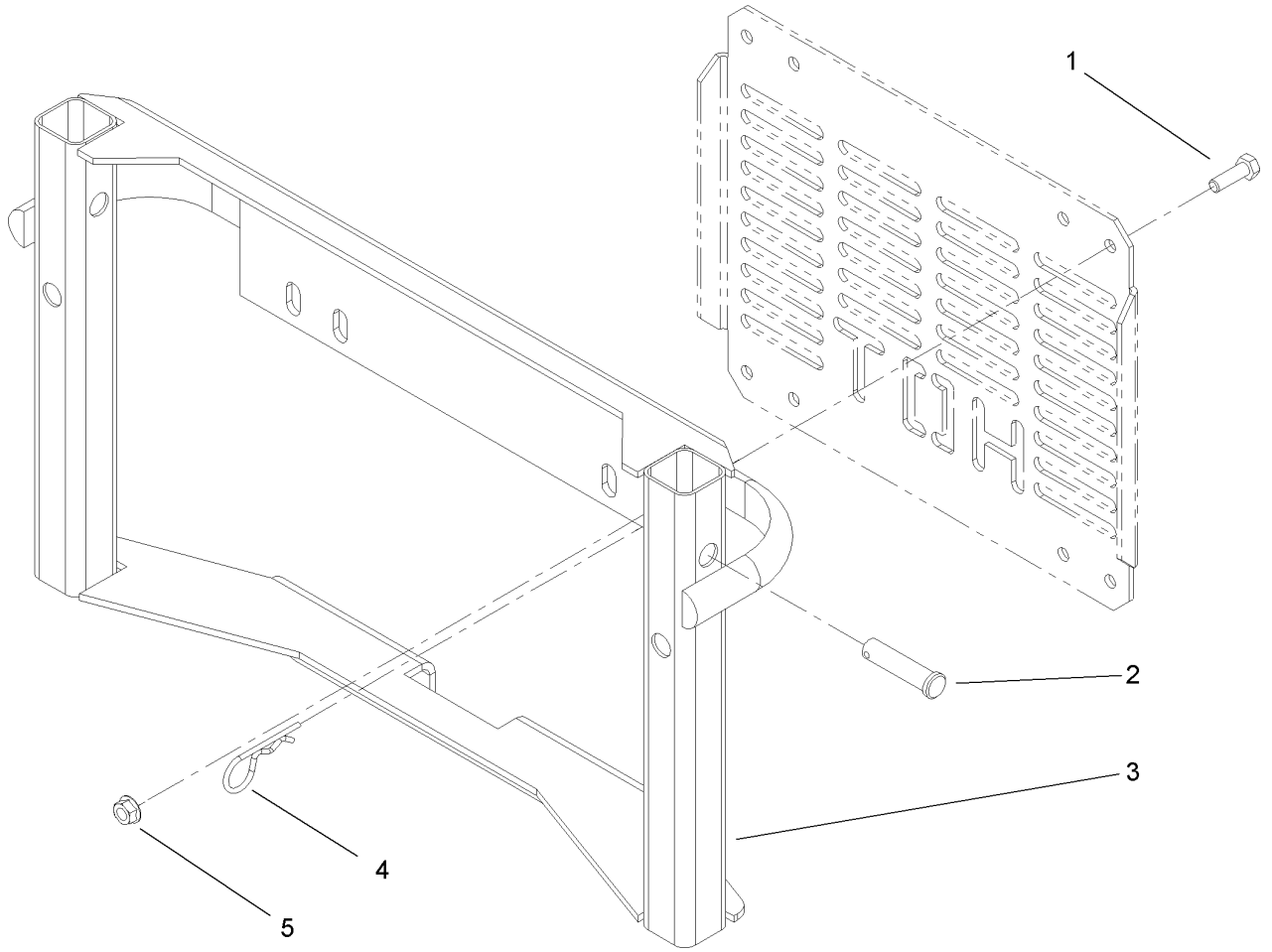
Ref	Part No.	Qty.	Description
16	130-0287-03	1	Strip-Wear
17	3230-1	5	Bolt-CARR
18	63-9700-03	2	Plate-Cover
19	9202154	2	Washer
20	106-3076-03	1	Cover-Shaft
21	3296-29	5	Nut-Lock, NI
22	3256-23	5	Washer-Flat
23	1535	1	Washer-Thrust
24	321-4	8	Screw-HH



## Blower and Idler Pulley Assembly

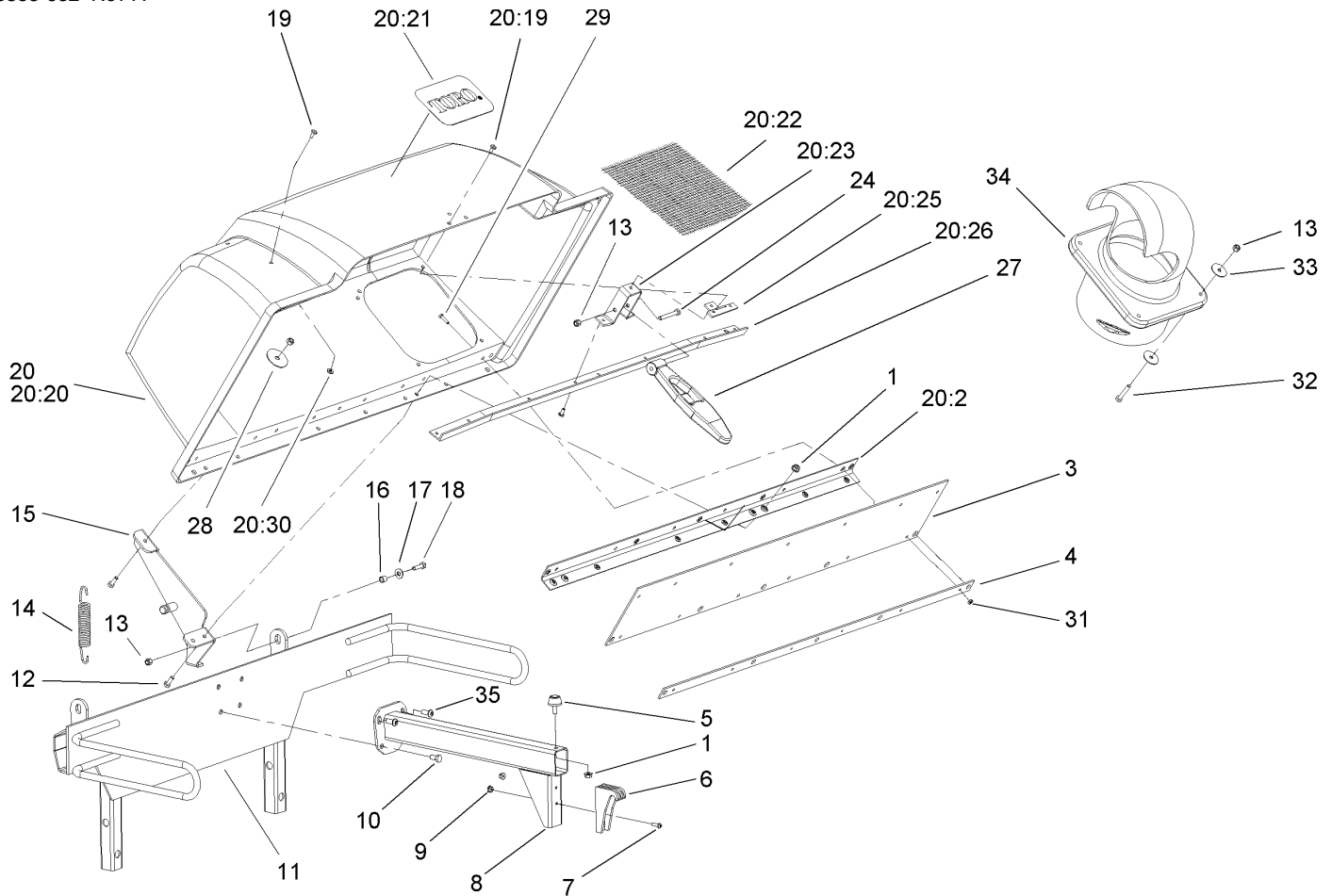
Ref	Part No.	Qty.	Description
1	74-5950	3	Latch-Swell
2	3296-42	13	Nut-Lock, NI
3	105-5990	1	Belt Cover ASM
3:2	80-8040	1	Decal-Warning
4	106-5891	1	Bumper
5	322-6	2	Screw-HH
6	3256-23	2	Washer-Flat
7	323-12	1	Screw-HH
8	3296-39	3	Nut-Lock, NI
9	3256-24	4	Washer-Flat
10	105-5986-03	1	Bracket-Idler
11	92-7099	1	Pulley-Idler
12	108-2778-03	1	Transition ASM
13	323-9	2	Screw-HH
14	3296-29	4	Nut-Lock, NI
15	92-7084	1	Pulley-Idler, Flat
16	106-2057	1	Spacer
17	106-2056	1	Idler Arm ASM
17:2	1-653600	2	Bearing
17:3	302-11	1	Fitting-Lube, 45 DEG
18	71-2870	2	Bolt-Eye
19	321-3	6	Screw-HH
20	108-7245-01	1	Handle
22	3296-59	1	Nut-Lock, NI

Ref	Part No.	Qty.	Description
23	322-21	1	Screw-HH
24	108-7224	1	Rod
25	95-5807	1	Spacer
26	3229-1	4	Screw-CARR
27	106-4161	2	Knob-Handle
28	106-2092	1	Blower Outlet Adapter ASM
28:2	105-9102	1	Plate-Adapter, Top
28:3	105-9103	1	Plate-Adapter, Side
28:4	106-8000	8	Rivet
28:5	3256-53	8	Washer-Flat
29	102528	1	Clamp
30	105-5875	1	Hose-Flexible
31	707451	1	Spring-Extension
33	32128-33	2	Nut-HF
34	106-3420-03	1	Shelf-Blower
35	3230-18	2	Screw-CARR
36	32128-25	2	Nut-HF
37	108-7225	1	Plate-Support
38	3218-3	1	Nut-Jam
39	108-7255	1	Grip-Handle
40	322-5	1	Screw-HH



### Bagger Mount Assembly

Ref	Part No.	Qty.	Description
1	322-5	8	Screw-HH
2	1-808289	2	Pin-Clevis
3	1-652308-03	1	Bagger Mount ASM
4	1-806005	2	Pin-Hair
5	32128-20	8	Nut-HF

## Bag Support and Hood Assembly

Ref	Part No.	Qty.	Description
1	32128-33	7	Nut-HF
3	1-653425	1	Seal
4	1-653528-03	1	Plate-Backing
5	1-523420	1	Bumper
6	1-653404	1	Catch
7	3290-500	2	Screw-PPH
8	103-5124-03	1	Support-Bag
9	3290-148	2	Nut-HF
10	322-2	2	Screw-HH
11	103-4738-03	1	Bagger Upright ASM
12	321-4	6	Screw-HH
13	3296-42	7	Nut-Lock, NI
14	1-653544	2	Spring-Extension
15	1-652395-03	2	Hinge ASM
16	1-633545	2	Spacer
17	3256-2	2	Washer-Flat
18	321-6	2	Screw-HH
19	114439	7	Rivet-Pop
20	107-4089	1	Hood ASM
20:2	1-653397-03	1	Stiffener-Bagger, Top
20:19	114439	31	Rivet-Pop
20:20	107-4088	1	Top-Bagger
20:21	107-4084	1	Decal
20:22	114967	1	Screen-Bagger

Ref	Part No.	Qty.	Description
20:23	1-653519	1	Anchor-Latch
20:25	1-653535	1	Reinforcement-Latch
20:26	1-653400-03	1	Support-Screen
20:30	3256-14	14	Washer-Flat
24	321-11	1	Screw-HH
27	1-653403	1	Latch
28	1-653036	2	Washer
29	1-803075	6	Screw-Head, Truss
31	32153-1	6	Nut-Lock, Side
32	321-9	4	Screw-HH
33	3256-58	8	Washer-Flat
34	106-3443	1	Adapter-Tube, Upper
35	3274-55	2	Screw-HSBH



