



Bagger Latch Kit
For Z Master Twin and Triple Baggers
Model No. 108-4101

Form No. 3353-646 Rev A

Installation Instructions

Installation

Loose Parts

Use the chart below to verify that all parts have been shipped.

Step	Description	Qty.	Use
1	No parts required	–	Removing the existing latch
2	No parts required	–	Removing the front part of the latch guard
3	Handle Rod hook Grip Locknut (3/8 inch) Jam nut (3/8 inch)	1 1 1 1 1	Assembling the new latch
4	No parts required	–	Drilling hole for new latch
5	Bolt (5/16 x 1 inch) Bolt (5/16 x 1-7/8 inch) Locknut (5/16 inch) Latch assembly Pivot plate Spacer	1 1 2 1 1 1	Installing the new latch
6	No parts required	–	Adjusting the new latch

Step
1

Removing the Existing Latch

No Parts Required

Procedure

1. Disengage the PTO, set the parking brake, and chock or block the drive wheels.

2. Turn off the engine, remove the key, and wait for all moving parts to stop before leaving the operating position.
3. Unlatch the blower and remove it from the machine.
4. Remove the spring from the latch and the blower (Figure 1).
5. Remove the nuts and bolt holding the existing latch to the blower and remove it. Discard the latch, spring and hardware (Figure 1 and Figure 2).

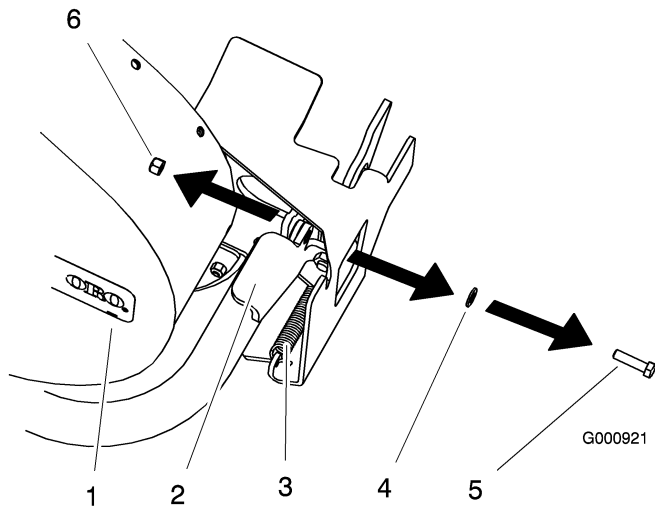


Figure 1

- | | |
|-------------------|-----------|
| 1. Blower | 4. Washer |
| 2. Existing latch | 5. Bolt |
| 3. Spring | 6. Nut |

Step
2

Removing the Front Part of the Latch Guard

No Parts Required

Procedure

Cut off part of the latch guard as shown in Figure 3.

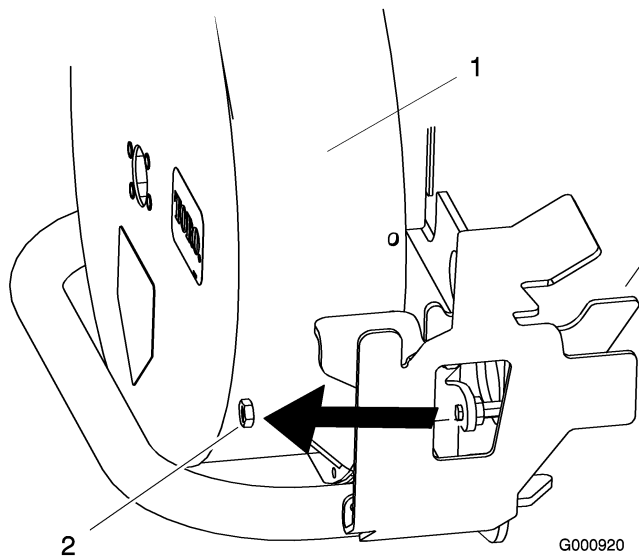


Figure 2

- | | |
|-----------|-------------------|
| 1. Blower | 3. Existing latch |
| 2. Nut | |

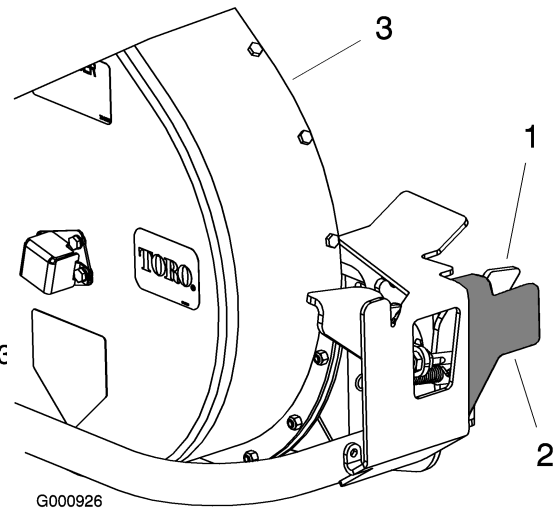


Figure 3

- | | |
|---------------------------|-----------|
| 1. Latch guard | 3. Blower |
| 2. Remove the shaded area | |

Step

3

Assembling the New Latch

Parts needed for this step:

1	Handle
1	Rod hook
1	Grip
1	Locknut (3/8 inch)
1	Jam nut (3/8 inch)

Procedure

1. Install the jam nut (3/8 inch) all the way onto the threaded rod hook end (Figure 4).
2. Install the rod hook through the block in the middle of the handle and secure it with a locknut (3/8 inch) until there is one thread showing on the end of the rod hook (Figure 4).

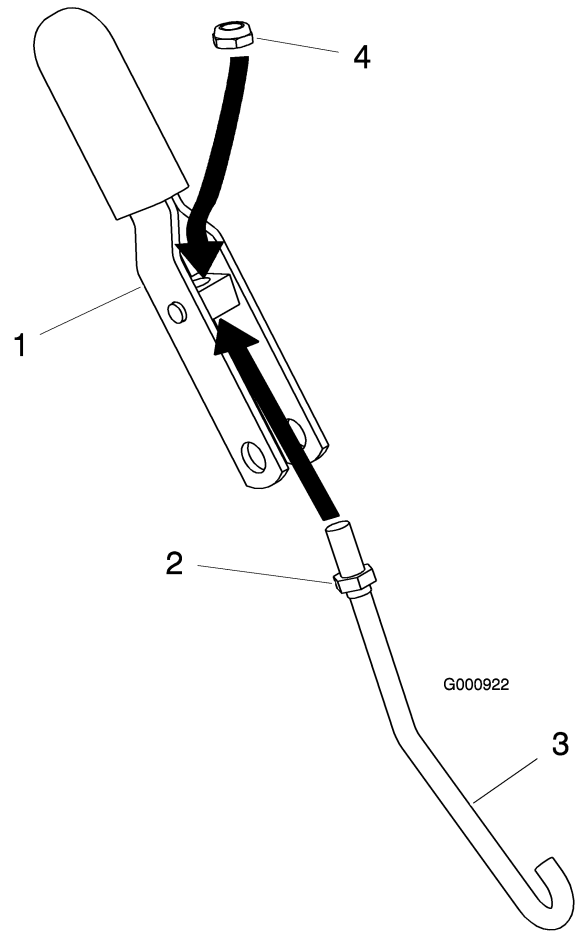


Figure 4

1. Handle
2. Jamnut (3/8 inch)
3. Rod hook
4. Locknut (3/8 inch)

Step

4

Drilling the Hole for the New Latch

No Parts Required

Procedure

1. Locate, mark and center punch the hole location shown in (Figure 5).
2. Drill a 11/32 inch hole into the latch guard (Figure 5).

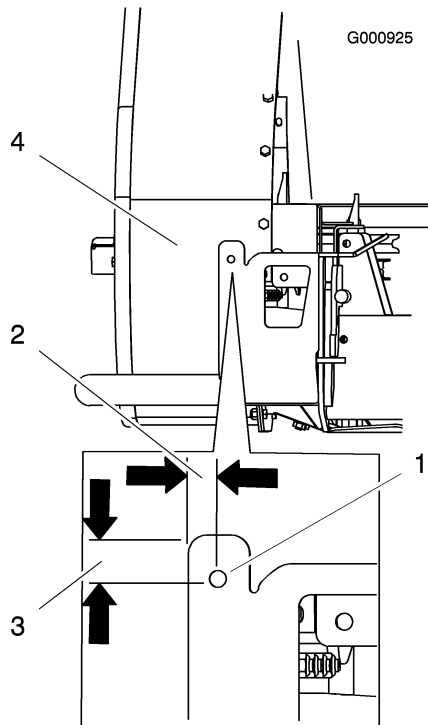


Figure 5

- 1. 11/32 inch hole to drill
- 2. 5/8 inch
- 3. 7/8 inch
- 4. Front view of blower

Step
5

Installing the New Latch

Parts needed for this step:

1	Bolt (5/16 x 1 inch)
1	Bolt (5/16 x 1-7/8 inch)
2	Locknut (5/16 inch)
1	Latch assembly
1	Pivot plate
1	Spacer

Procedure

1. Install the latch assembly to the blower and pivot plate at the bottom of the latch with a bolt (5/16 x 1-7/8 inch), spacer and locknut (5/16 inch) (Figure 6).

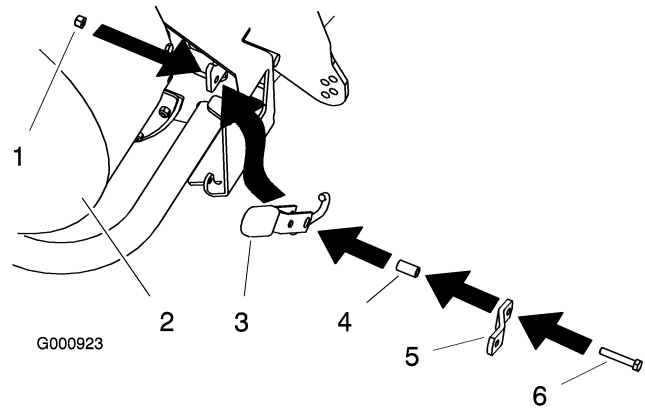


Figure 6

- 1. Locknut (5/16 inch)
- 2. Blower
- 3. Latch
- 4. Spacer
- 5. Pivot plate
- 6. Bolt (5/16 x 1-7/8 inch)

2. Install the latch assembly and pivot plate using the previously drilled hole in the blower with a bolt (5/16 x 1 inch) and locknut (5/16 inch) (Figure 7).

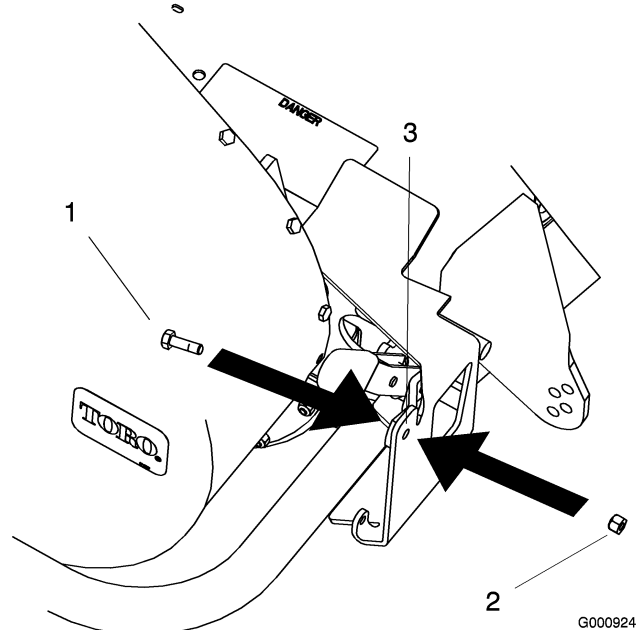


Figure 7

- 1. Locknut (5/16 inch)
- 2. Bolt (5/16 x 1 inch)
- 3. Previously drilled hole

Step

6

Adjusting the Latch

No Parts Required

Procedure

Adjust the blower latch when it does not engage the front peg correctly. A 9/16 inch thin wall deep socket is recommended for this procedure.

1. Check that the bagger belt is properly installed and routed correctly. Refer to the *Operator's Manual*.
2. Guide the rod hook onto the front peg and pull up on the handle to lock the latch. Use the following procedures to ensure the latch engages properly.
3. There must not be a gap between the mounting plate and the blower assembly (Figure 8). If there is a gap, proceed to item 5 of this procedure and shorten the latch.

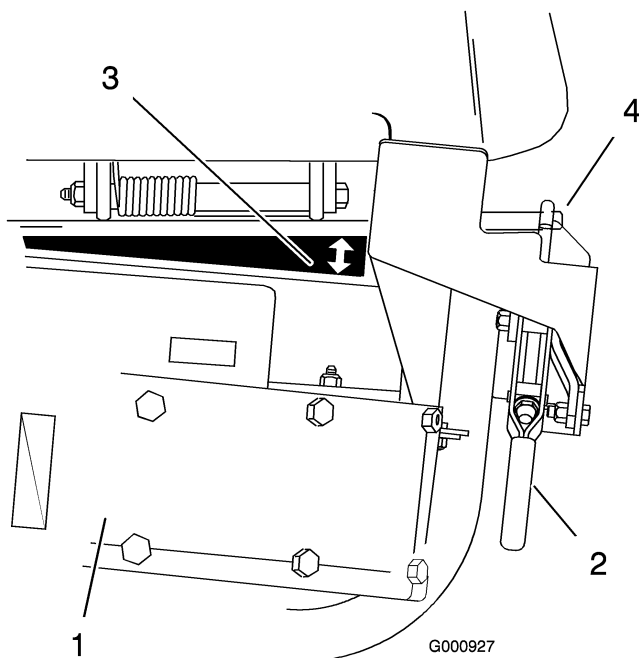


Figure 8

1. Topview of blower
2. Latch
3. Gap shown
4. Front peg

4. The blower latch must engage the front peg properly (Figure 9). If it does not, proceed to item 5 of this procedure and lengthen the latch.

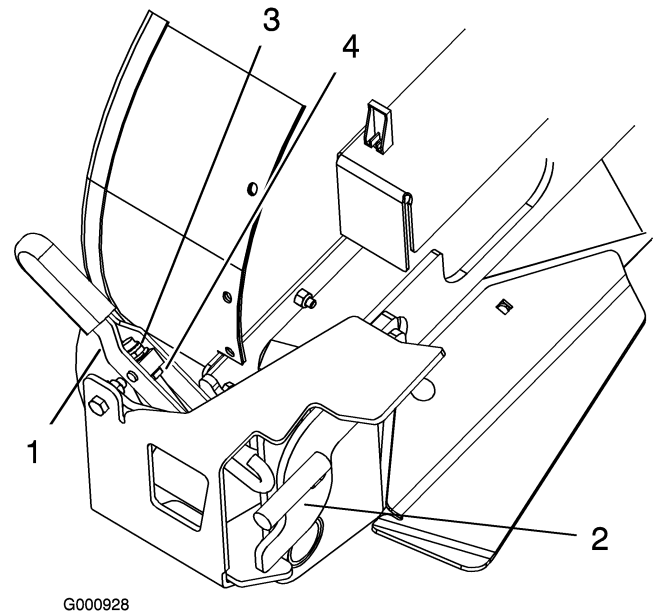


Figure 9

1. Latch
2. Front peg
3. Locknut
4. Jam nut

5. Adjust the lock nut at the end of the rod hook so there is no gap between the blower and mower deck and that it engages the front peg properly.
6. Tighten the jam nut up against the block in the handle (Figure 4).
7. Tighten the lock nut at the end of the rod hook.
8. Check to make sure the latch locks and unlocks properly. Repeat adjustments if needed.

Notes:

Notes:



Count on it.