



## Flow Combining Kit Groundsmaster® 580-D Model 30582

Model No. 30614

### Parts Catalog

#### Ordering Replacement Parts

To order replacement parts, please supply the part number, the quantity, and the description of each part desired.

#### Understanding Reference Numbers

Each identified part in an illustration has a reference number. The reference number for a part also appears in the parts list, along with other information about the part.

This catalog uses two special reference number formats, one to indicate parts in a service assembly and another to indicate the quantity of a given part in an illustration.

#### Service Assembly Reference Numbers

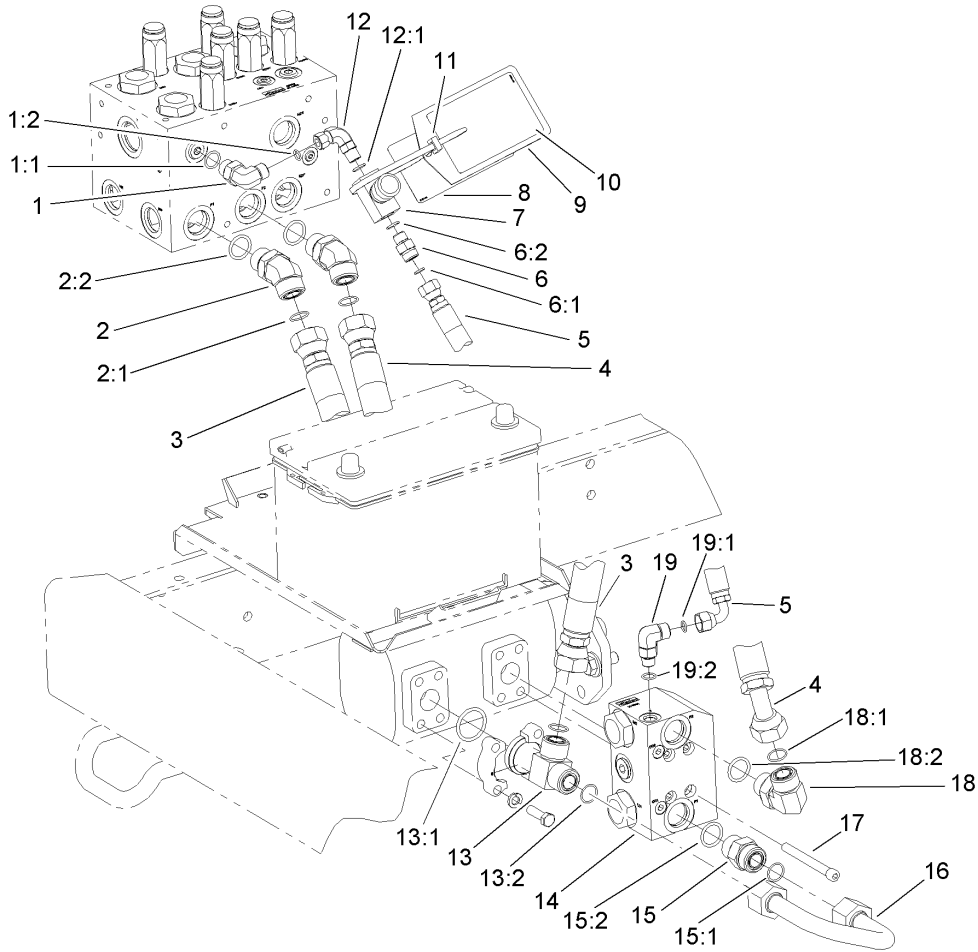
Parts in service assemblies have reference numbers in the form a:b. The a represents the reference number of the entire service assembly and the b represents a sequential number unique to each part within the service assembly.

For example, a wheel assembly might be identified by reference number 6, the tire by 6:1, the valve by 6:2, and the wheel by 6:3. When you order the assembly identified by reference number 6, you receive all parts identified by reference numbers 6:1, 6:2, and 6:3. However, you may also order any part individually. Reference numbers of this type appear in illustrations and in part lists.

#### Reference Numbers Indicating Quantity

In an illustration, if a reference number indicates more than one part, the reference number has the form nX y. The n represents the quantity of the part, the X is the multiplication symbol, and the y represents the reference number.

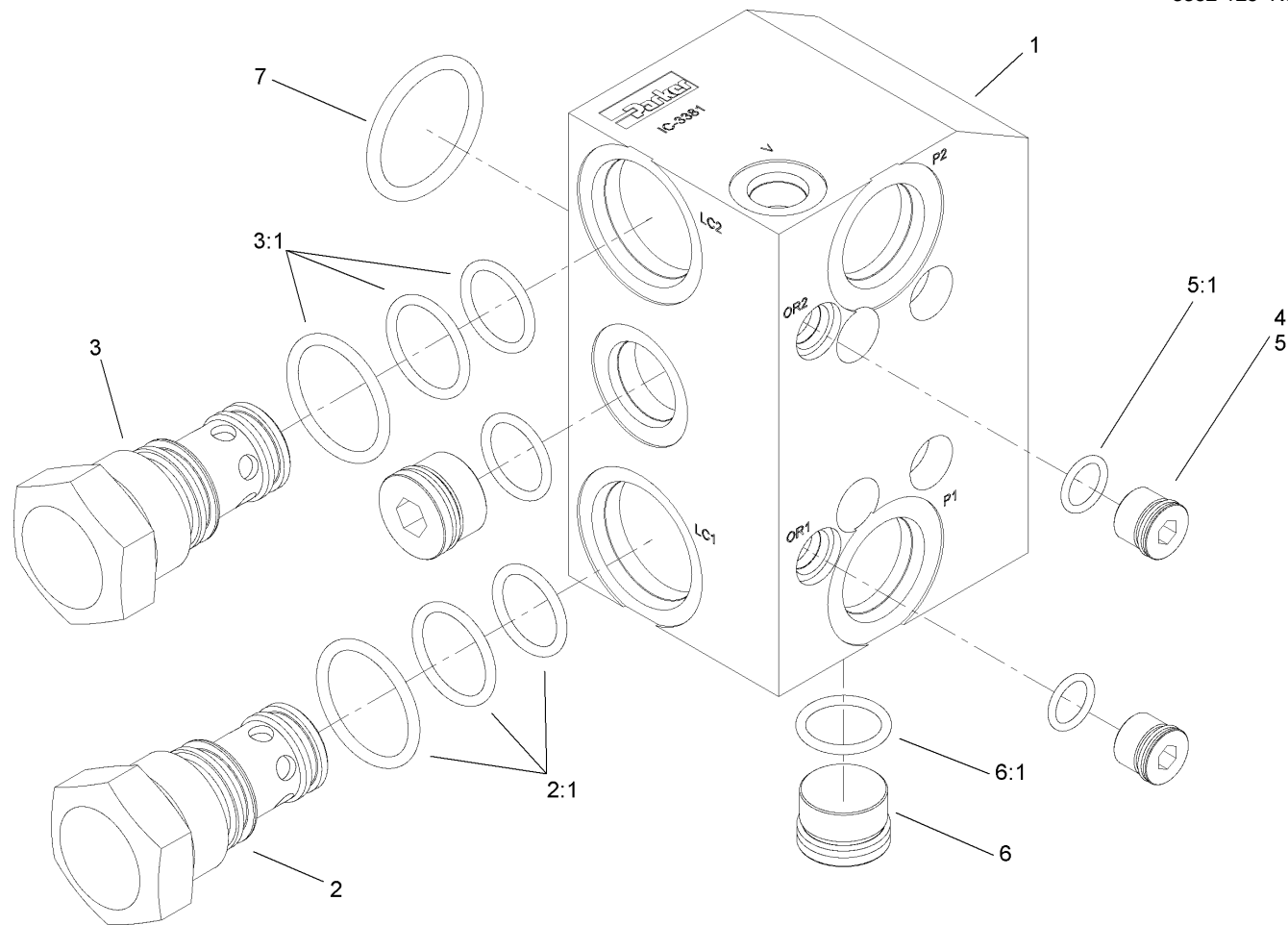
For example, in an illustration, the reference number 2X 37 means that two of the parts identified by reference number 37 are indicated.



# Flow Combining Kit Assembly

Ref	Part No.	Qty.	Description
1	340-18	1	Fitting-HYD, 90 DEG
1:1	237-79	1	O-Ring
1:2	237-22	1	O-Ring
2	100-5530	2	Fitting-HYD, 45 DEG
2:1	237-58	1	O-Ring
2:2	237-81	1	O-Ring
3	105-0684	1	HYD Hose ASM
4	108-1502	1	HYD Hose ASM
5	104-0051	1	HYD Hose ASM
6	340-2	1	Fitting-HYD, Straight
6:1	237-22	1	O-Ring
6:2	237-42	1	O-Ring
7	76-2810	1	Valve-Needle
8	82-7870	2	Decal-Warning
9	82-7950	1	Plate-Decal
10	82-7880	1	Decal-Operation
11	3290-378	1	Tie-Cable
12	340-110	1	Fitting-Swivel, 90 DEG
12:1	237-42	1	O-Ring
13	74-2590	1	Tee-Outlet, Pump
13:1	340-135	1	O-Ring
13:2	237-58	2	O-Ring
14	108-1510	1	Flow Combining Manifold ASM
15	340-9	1	Fitting-HYD, 90 DEG

Ref	Part No.	Qty.	Description
15:1	237-58	1	O-Ring
15:2	237-81	1	O-Ring
16	108-1480	1	HYD Tube ASM
17	3274-20	4	Screw-HSH
18	340-142	1	Fitting-HYD, 90 DEG
18:1	237-58	1	O-Ring
18:2	237-81	1	O-Ring
19	340-77	1	Fitting-HYD, 90 DEG
19:1	237-22	1	O-Ring
19:2	237-42	1	O-Ring



**Flow Combining Manifold Assembly No. 108-1510**

Ref	Part No.	Qty.	Description				
1		1	Body-Combining, Flow (Not Serviced Separately)				
2	69-4190	1	Cartridge-Logic				
2:1	95-5644	1	Seal Kit				
3	74-2560	1	Cartridge-Logic, Nc Spool Type				
3:1	95-5644	1	Seal Kit				
4	94-8140	2	Plug-Orifice				
5	106-1025	2	Plug-Leak, Zero				
5:1	237-78	1	O-Ring				
6	106-1028	2	Plug-Leak, Zero				
6:1	237-80	1	O-Ring				
7	340-135	1	O-Ring				

