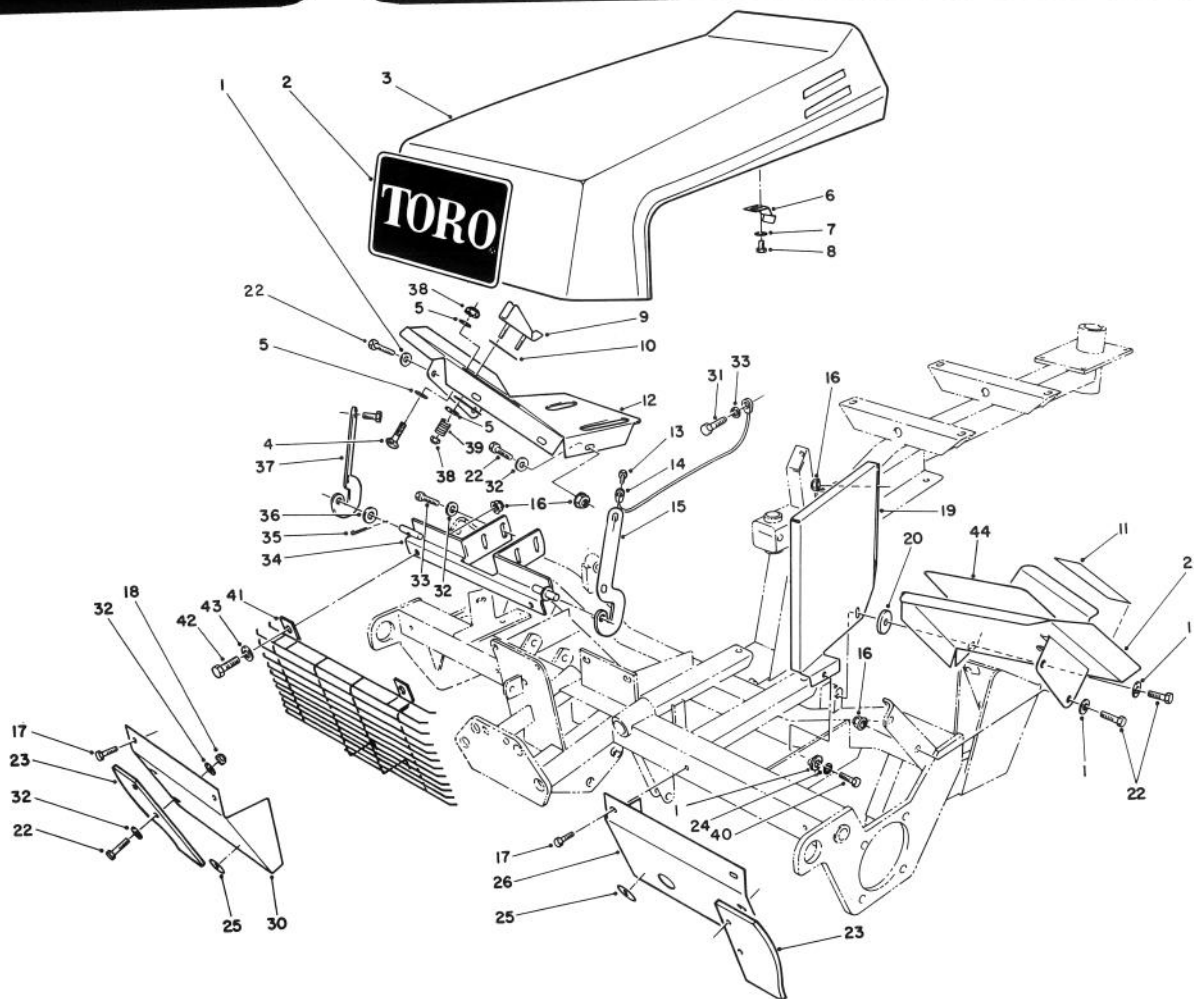


**TORO®**

MODEL NO. 03410-80001 &amp; UP

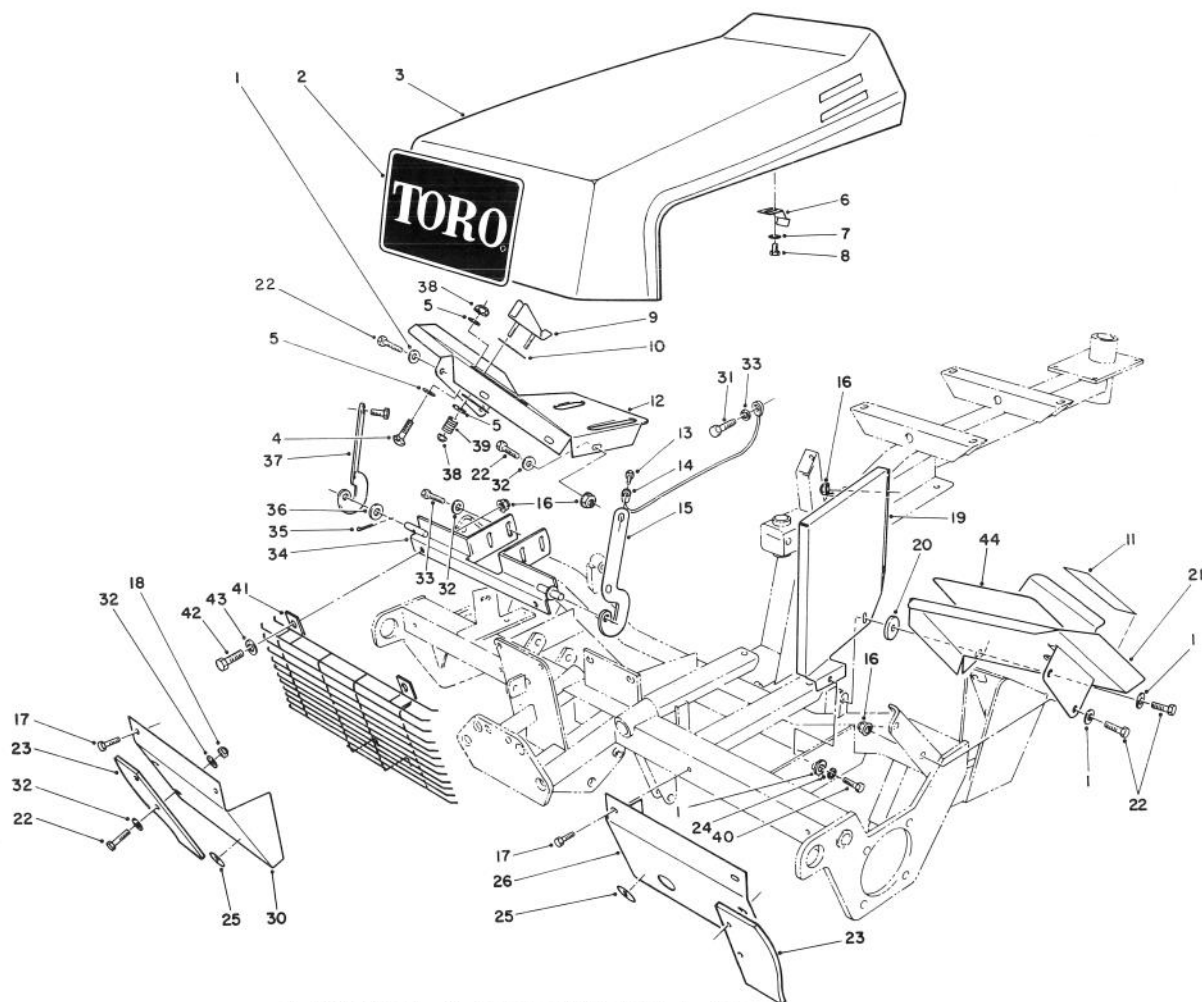
**PARTS  
CATALOG****REELMASTER® 216**

I. 12.914.8

**HOOD ASSEMBLY**

Ref. No.	Part No.	Description	No. Used
1	3256-56	Washer - Flat	5
2	62-7400	Decal - TORO Logo	1
3	62-5400	Hood Assembly	1
4	3229-1	Bolt - Carriage	1
5	3256-22	Washer - Flat	4
6	62-5010	Latch - Hood	1
7	3256-14	Washer - Flat	2
8	32104-77	Screw - Hex. Hd. Self Tap	2
9	62-7320	Stop - Traction Pedal	1
10	62-7350	Slide - Pedal Stop	2
11	62-7280	Decal - Brake	1
12	62-7210	Footrest R.H.	1
13	32144-22	Screw - Hex. Hd. Self Tap	4
14	62-7310	Cable - Hood Stop	1
15	28-0120	Bracket - Hinge (L.H.)	1

Ref. No.	Part No.	Description	No. Used
16	32128-25	Nut - Flange Lock	14
17	32104-82	Screw - Hex. Hd. Self Tap	4
18	3296-29	Nut - Lock	3
19	62-5210	Cover - Belt	1
20	62-7190	Spacer	1
21	61-2700	Footrest L.H.	1
22	322-5	Screw - Cap Hex. Hd.	14
23	62-5000	Deflector - Grass	2
24	3253-4	Washer - Lock	1
25	58-6520	Decal - Grease Fitting	2
26	61-2970	Shield - Front Grass (L.H.)	1
30	61-2980	Shield - Front Grass (R.H.)	1
31	321-5	Screw - Cap Hex. Hd.	1
32	3256-23	Washer - Flat	14
33	3253-3	Washer - Lock	1



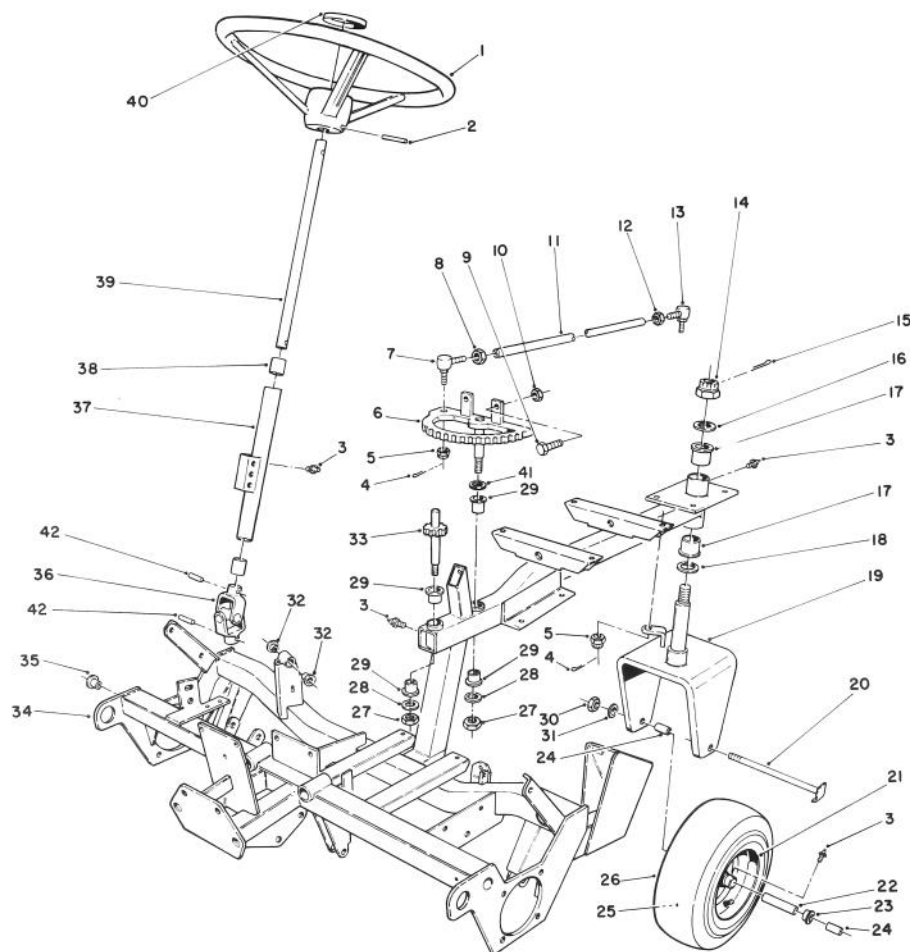
I.12.914.8

## HOOD ASSEMBLY (Continued)

Ref. No.	Part No.	Description	No. Used
34	61-3010	Support - Hood & Grille	1
35	3272-6	Pin - Cotter	1
36	3256-24	Washer - Flat	1
37	28-0130	Bracket - Hinge (R.H.)	1
38	3296-16	Nut - Lock	3
39	10-4850	Spring - Compression	2

Ref. No.	Part No.	Description	No. Used
40	322-3	Screw - Cap Hex. Hd.	3
41	66-5340	Grille - Front	1
42	322-43	Screw - Cap Hex. Hd.	2
43	3256-71	Washer - Flat	2
44	66-6120	Pad - Foot	1

\*Not Illustrated

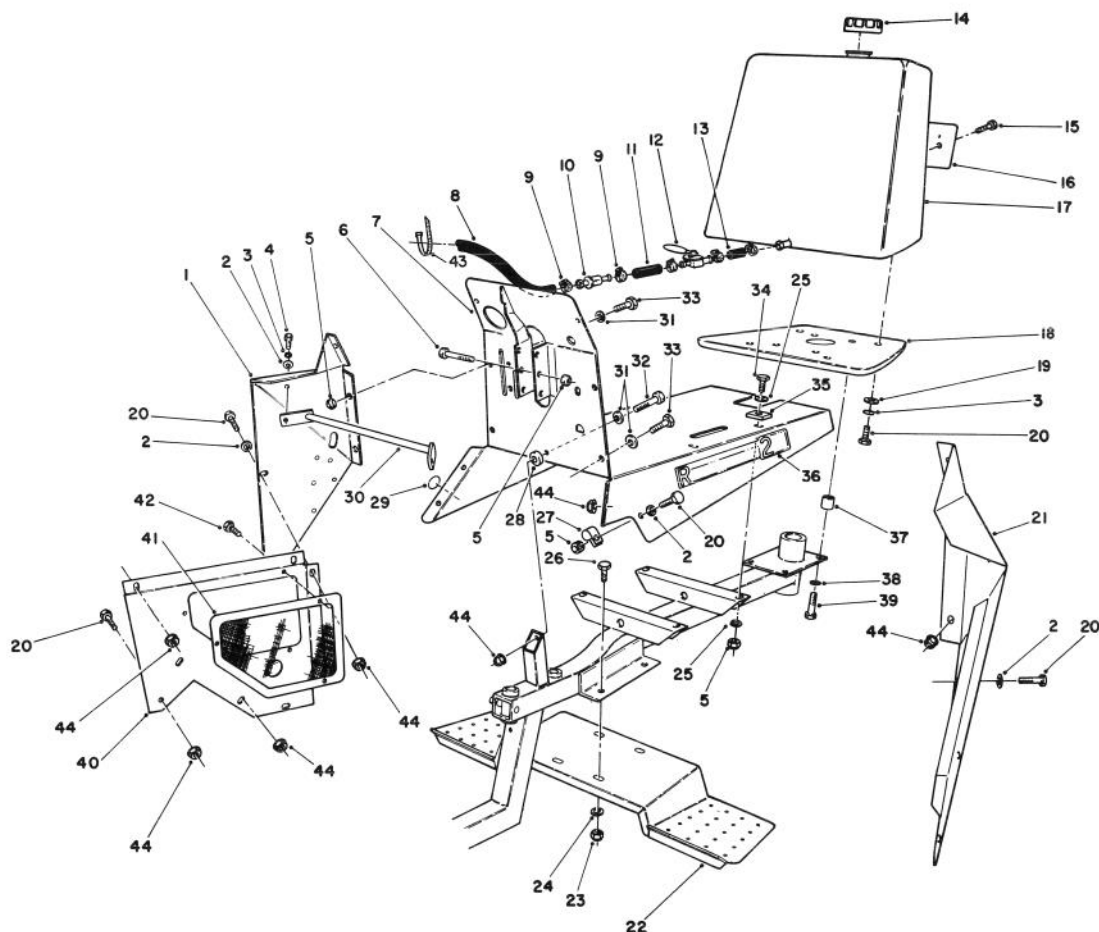


1.12.914.1

## FRAME AND STEERING ASSEMBLY

Ref. No.	Part No.	Description	No. Used
1	25-6260	Wheel - Steering (Incl. Ref. #40)	1
2	32121-10	Pin - Roll	1
3	302-5	Fitting - Grease	5
4	3272-7	Pin - Cotter	2
5	32136-4	Nut - Hex. Slotted	2
6	61-2040	Rack Assembly	1
7	21-0140	Balljoint - R.H. (Incl. Ref. #5)	1
8	3220-5	Nut - Jam (R.H.)	1
9	323-7	Screw - Cap Hex. Hd.	2
10	3218-3	Nut - Lock	2
11	61-2070	Tube - Steering	1
12	3220-12	Nut - Jam (L.H.)	1
13	21-0150	Balljoint - L.H. (Incl. Ref. #5)	1
14	32136-9	Nut - Hex. Slotted	1
15	3272-30	Pin - Cotter	1
16	61-2000	Washer	1
17	256-245	Bushing - Flange	2
18	61-1990	Washer	1
19	61-1900	Castor Fork Assy.	1
20	61-1960	Axle - Castor	1
21	242-79	Rim - Wheel	1

Ref. No.	Part No.	Description	No. Used
22	61-3520	Spacer - Bearing	1
23	251-210	Bearing - Wheel	2
24	61-1980	Spacer - Rear Axle	2
25	232-47	Tube - Inner	1
26	231-122	Tire	1
27	3296-28	Nut - Lock	2
28	3256-26	Washer	2
29	256-117	Bushing - Flange	4
30	3296-51	Nut - Lock	1
31	3256-28	Washer - Flat	1
32	256-287	Bushing - Flange	2
33	61-2010	Pinion	1
34	61-1400	Frame Assy. (Incl. Ref. #3, 17, 29, 32 & 35)	1
35	256-247	Bushing - Flange	2
36	61-3360	Joint - Universal	1
37	61-2090	Column - Steering (Incl. Ref. #3 & 38)	1
38	256-27	Bearing - Sleeve	2
39	61-2080	Shaft - Steering	1
40	24-2090	Cap - Steering Wheel	1
41	3-6498	Washer	1
42	32121-15	Pin - Roll	2



I. 12.914.7

## FUEL TANK ASSEMBLY

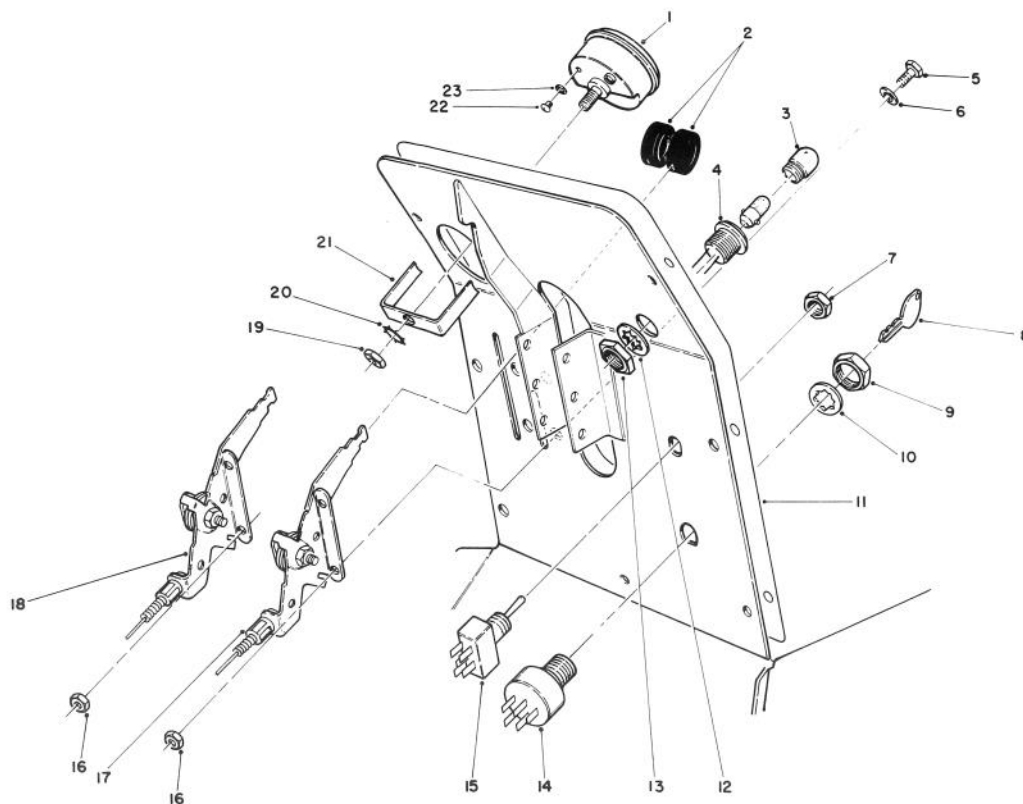
Ref. No.	Part No.	Description	No. Used
1	61-3880	Panel - Access R.H.	1
2	3256-23	Washer - Flat	13
3	3253-4	Washer - Lock	6
4	322-2	Screw - Cap Hex. Hd.	2
5	3296-29	Nut - Lock	13
6	322-12	Screw - Cap Hex. Hd.	1
7	61-3580	Panel - Instrument	1
8	47-2988	Hose - Fuel	1
9	2412-36	Clamp - Hose	6
10	38-8000	Filter - Fuel	1
11	47-2980	Hose - Fuel	1
12	61-3550	Valve - Ball	1
13	56-2230	Hose - Fuel	1
14	55-3570	Cap - Fuel	1
15	3290-470	Screw	2
16	61-3310	Plate - TORO Logo	1
17	61-0030	Tank - Fuel	1
18	61-2680	Weight - 5 Bld.	1
*	62-5140	Weight - 8 Bld. (Optional)	1
19	3256-2	Washer - Flat	4
20	322-3	Screw - Cap Hex. Hd.	13
21	62-5370	Panel - Access L.H.	1
22	61-3700	Step - Foot	1

Ref. No.	Part No.	Description	No. Used
23	3296-39	Nut - Lock	4
24	3256-4	Washer - Flat	4
25	3256-3	Washer - Flat	4
26	323-7	Screw - Cap Hex. Hd.	4
27	2412-71	Clamp - R	1
28	62-7170	Spacer	1
29	58-6520	Decal - Grease Fitting	1
30	62-5330	Bracket - Side Panel	1
31	3256-70	Washer - Flat	5
32	322-45	Screw - Cap Hex. Hd.	1
33	322-43	Screw - Cap Hex. Hd.	6
34	322-6	Screw - Cap Hex. Hd.	4
35	62-7200	Spacer	4
36	61-3840	Decal - Reelmaster 216	2
†37	61-2220	Spacer	4
38	3253-21	Washer - Lock	4
39	323-9	Screw - Cap Hex. Hd.	4
40	61-3460	Support - Hydraulic Tank	1
41	61-3450	Screen - Support	1
42	32104-76	Screw - Self Tapping	3
43	3290-379	Tie - Cable	4
44	32128-25	Nut - Flange Lock	12

†Use with 5 blade cutting units only.

\*Not Illustrated



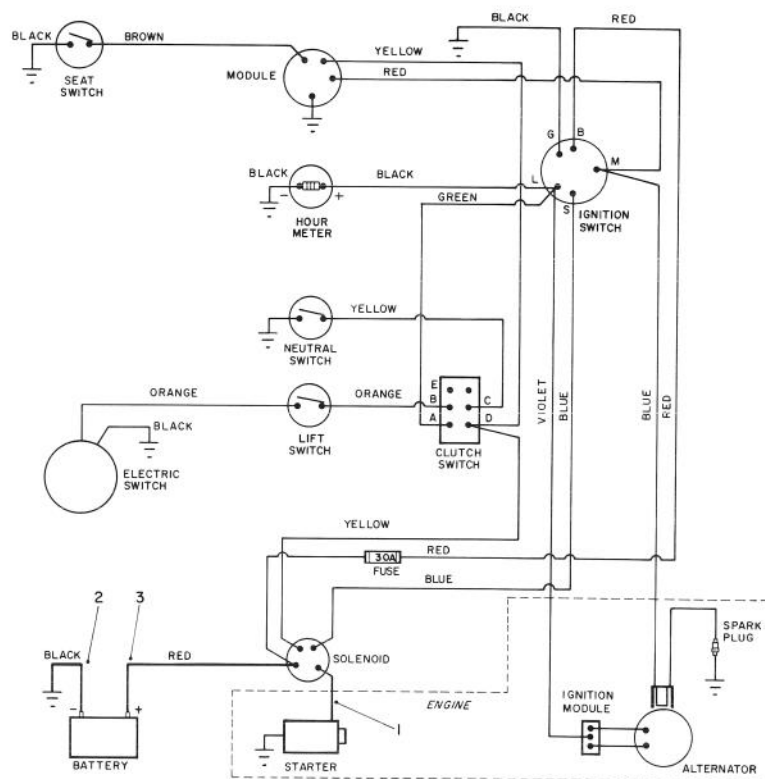


I. 12.914.13

## INSTRUMENT PANEL ASSEMBLY

Ref. No.	Part No.	Description	No. Used
1	12-9990	Meter - Hour (Incl. Ref. #19-23)	1
2	233-35	Knob	2
3	218-562	Lens	1
4	44-2212	Lamp - Pilot (Incl. Ref. #3, 12-13)	1
5	321-39	Screw - Cap Hex. Hd.	4
6	3256-1	Washer - Flat	4
7	218-500	Nut	1
8	218-412	Key (Set of 2)	1
9	218-416	Nut	1
10	3254-5	Washer - Lock	1
11	62-7270	Decal - Instrument Panel	1
12	218-536	Washer - Lock	1

Ref. No.	Part No.	Description	No. Used
13	218-535	Nut	1
14	23-0660	Switch - Key (Incl. Ref. #8-10)	1
15	37-2610	Switch - Clutch (Incl. Ref. #7)	1
16	3296-42	Nut - Lock	4
17	61-2630	Control - Choke	1
18	61-2640	Control - Throttle	1
19	3217-26	Nut - Hex.	1
20	3254-1	Washer - Lock	1
21	218-515	Bracket - Mounting	1
22	3250-15	Screw - Pan Hd.	2
23	3254-10	Washer - Lock	2

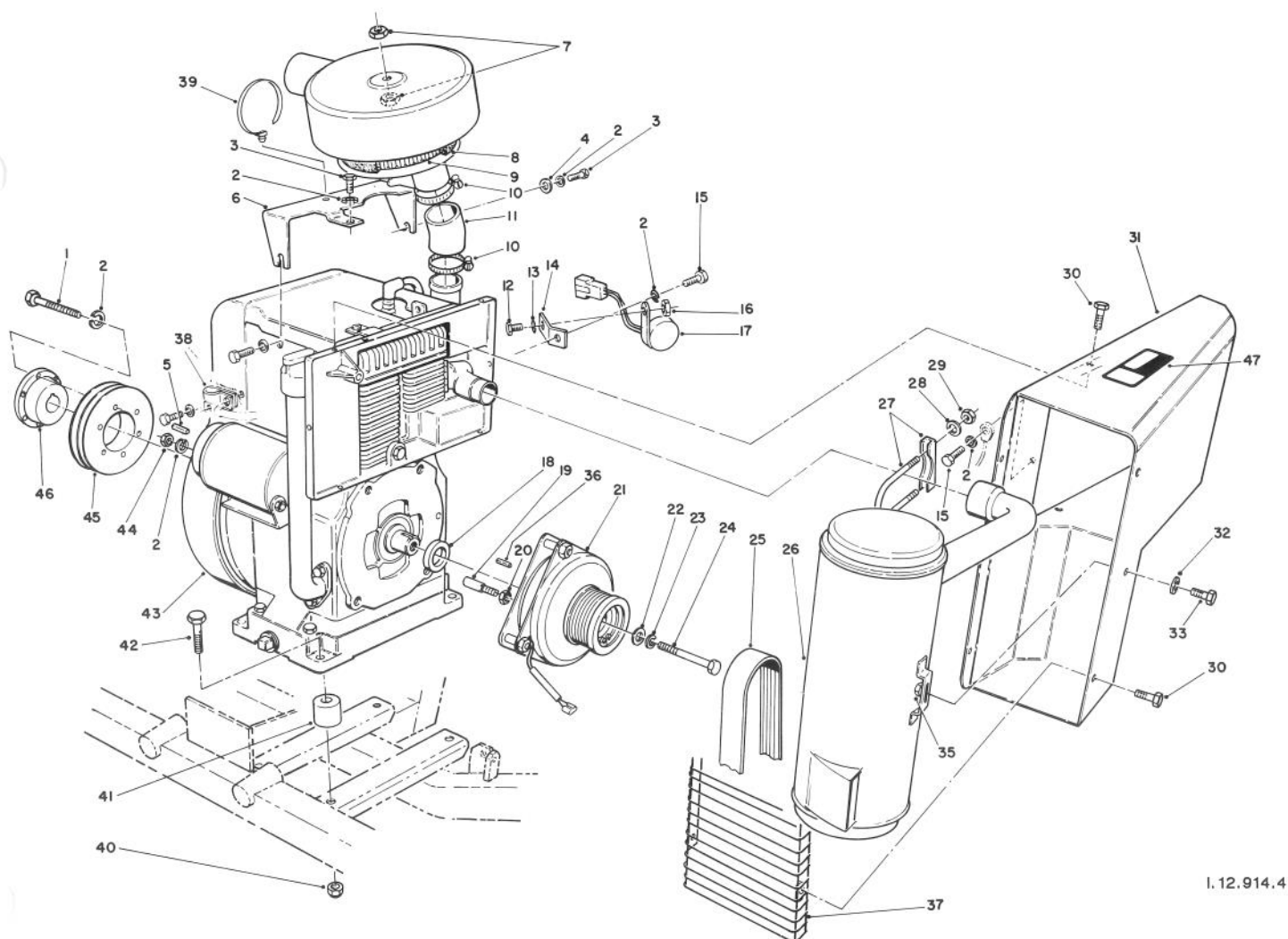


## ELECTRICAL SCHEMATIC

Ref. No.	Part No.	Description	No. Used
1	61-2660	Wire - Solenoid/Starter	1
2	61-2670	Wire - Ground	1

Ref. No.	Part No.	Description	No. Used
3	10-7130	Wire - Battery/Solenoid	1
*	61-2650	Wire Harness Assembly	1

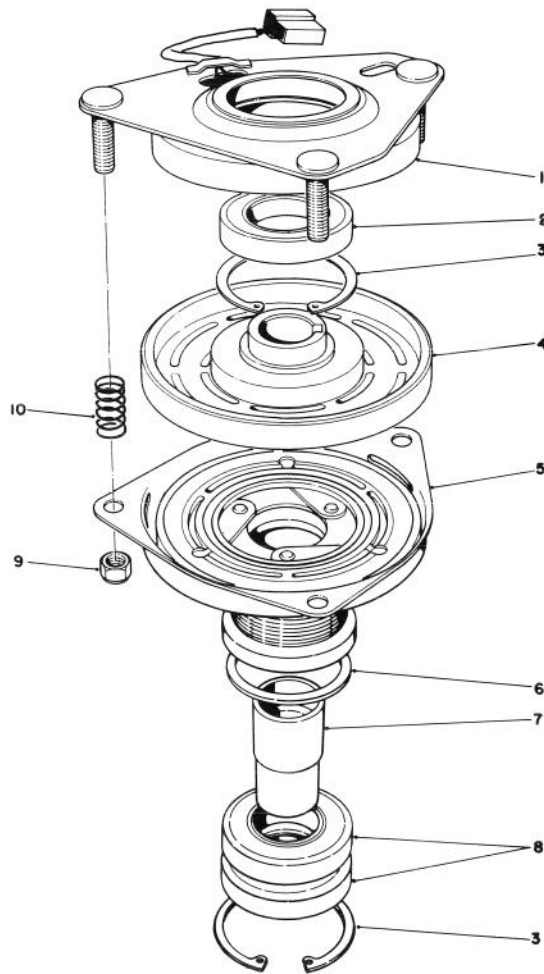
\*Not Illustrated



## ENGINE & CLUTCH ASSEMBLY

Ref. No.	Part No.	Description	No. Used
1	321-13	Screw - Cap Hex. Hd.	3
2	3253-3	Washer - Lock	8
3	321-4	Screw - Cap Hex. Hd.	2
4	3256-1	Washer - Flat	1
5	10-7070	Key - Square	1
6	61-2120	Bracket - Air Cleaner	1
7	3296-56	Nut - Lock	2
8		Precleaner - Air Cleaner	1
9		Element - Air Cleaner	1
10	2412-92	Clamp - Hose	2
11	61-3470	Hose	1
12	321-5	Screw - Cap Hex. Hd.	1
13	3255-7	Washer - Lock	1
14	61-3590	Strap - Ground	1
15	321-5	Screw - Cap Hex. Hd.	2
16	3296-16	Nut - Lock	1
17	59-9810	Module - Ignition	1
18	3-6558	Spacer - Clutch	1
19	61-2170	Stop - Clutch	1
20	3218-3	Nut - Jam	1
21	61-0050	Clutch Assembly	1
22	44-8160	Washer - Flat	1
23	3253-6	Washer - Lock	1
24	3212-14	Screw - Cap Hex. Hd.	1
25	61-3390	Belt - Poly-V	1

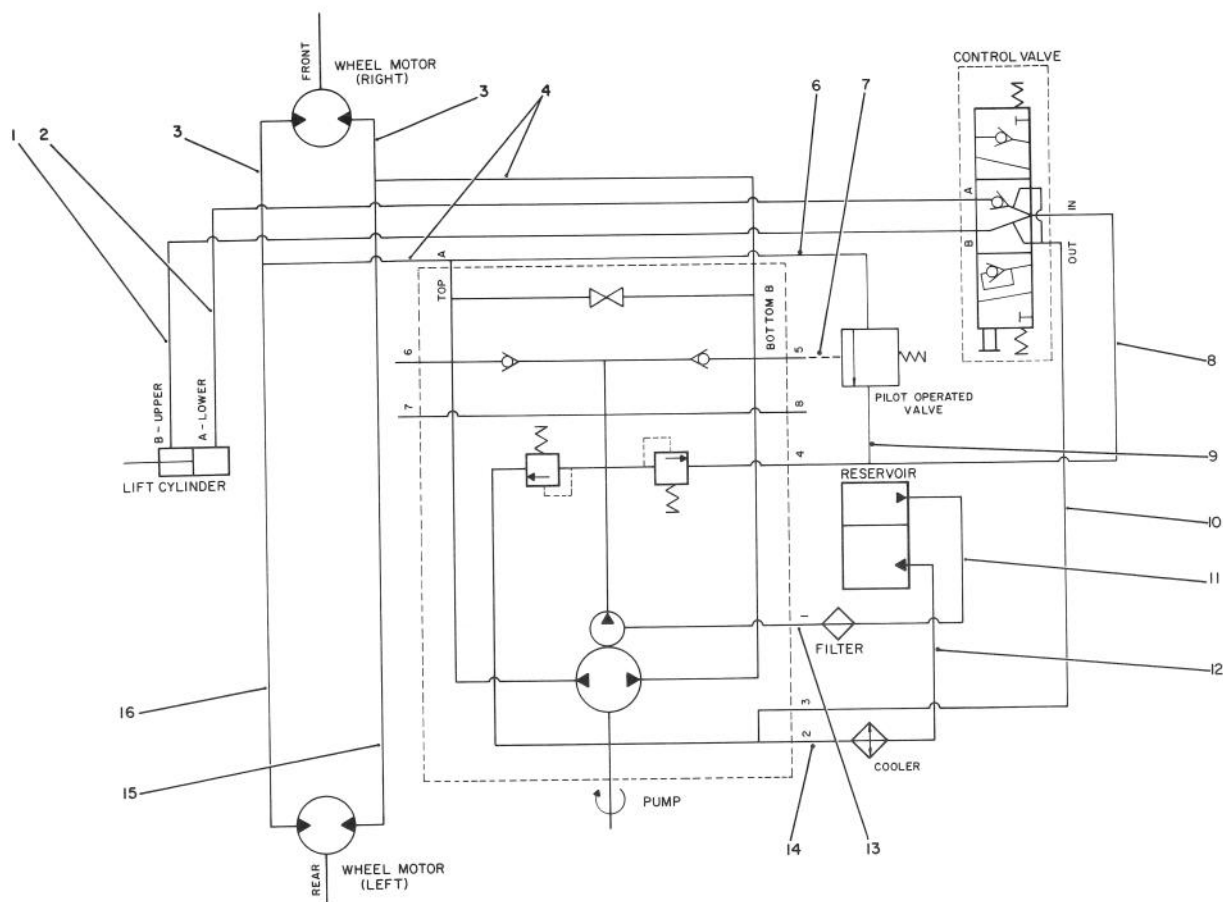
Ref. No.	Part No.	Description	No. Used
26	61-0040	Muffler	1
27	2112-9	Clamp - Muffler (Incl. Ref. #28-29)	1
28	3253-4	Washer - Lock	2
29	3217-6	Nut - Hex.	2
30	12-3270	Screw - Cap Hex. Hd.	8
31	61-0020	Shroud - Muffler	1
32	3256-70	Washer - Flat	2
33	322-46	Screw - Cap Hex. Hd.	2
35	32149-12	Nut - Lock	2
36	18-6430	Key - Square	1
37	66-5330	Grille - Muffler	1
38	2412-4	Clamp - R	1
39	3290-410	Tie - Push Mount	1
40	3296-39	Nut - Lock	4
41	61-2220	Spacer - Engine	4
42	323-47	Screw - Cap Hex. Hd.	4
43		Engine - Kohler Model No. M16 Spec. No. 711526	1
44	3218-1	Nut - Hex.	1
45	61-3330	Pulley - Engine	1
46	61-3340	Bushing - Taper (Incl. Ref. #1-2)	1
47	62-7290	Decal - Hot	1



## ELECTRIC CLUTCH ASSEMBLY NO. 61-0050

Ref. No.	Part No.	Description	No. Used
1	44-8350	Field Assembly (Incl. Ref. #2 & 3)	1
2	251-292	Bearing - Field	1
3	44-8310	Ring - Retaining	2
4	44-8360	Field Coil, Rotor & Bearing Assembly (Incl. Ref. #1)	1

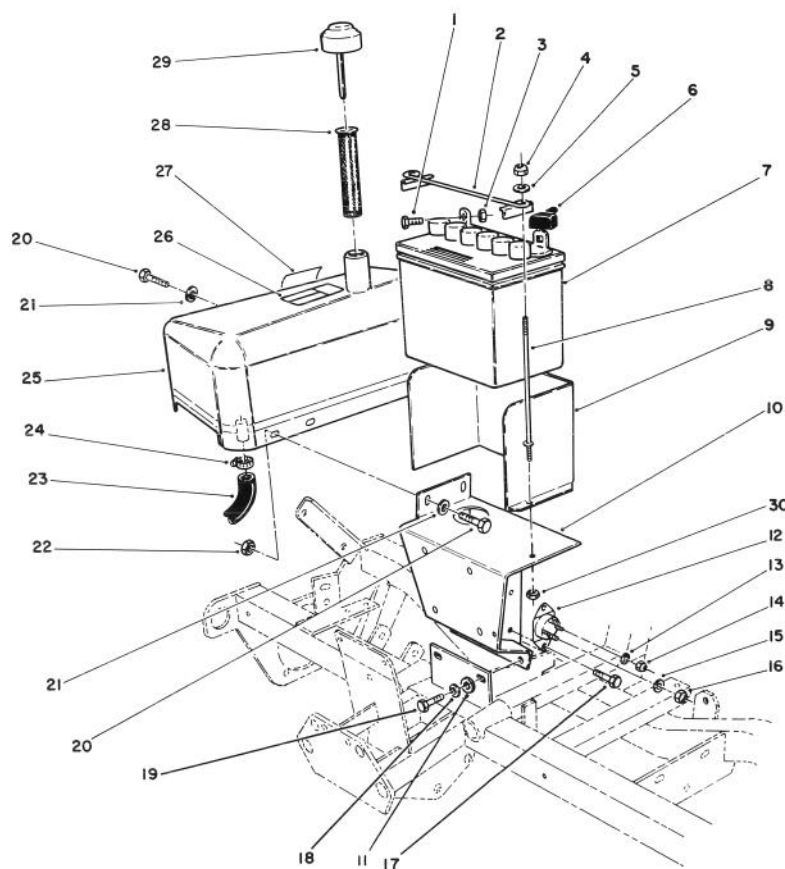
Ref. No.	Part No.	Description	No. Used
5	62-5250	Armature & Pulley Assy. (Incl. Ref. 3, 6, 7 & 8)	1
6	44-8330	Spacer - Pulley Bearing	1
7	62-5260	Collar - Bearing	1
8	251-291	Bearing - Pulley	2
9	3296-6	Nut - Lock	3
10	44-8320	Spring - Compression	3



## HYDRAULIC SCHEMATIC

Ref. No.	Part No.	Description	No. Used
1	61-2500	Hydraulic Hose Assembly	1
2	61-2490	Hydraulic Hose Assembly	1
3	61-3060	Tube - Hydraulic R.H.	2
4	61-3130	Hydraulic Hose Assembly	2
6	63-4870	Hose - Hydraulic	1
7	63-4890	Hose - Hydraulic	1
8	61-2520	Hydraulic Hose Assembly (Upper)	1
9	63-4880	Hose - Hydraulic	1

Ref. No.	Part No.	Description	No. Used
10	61-2510	Hydraulic Hose Assembly (Lower)	1
11	61-2550	Hose - Hydraulic	1
12	61-2560	Hose - Hydraulic	1
13	61-2540	Hose - Hydraulic	1
14	63-5170	Hose - Hydraulic	1
15	61-3070	Tube - Hydraulic L.H. Rear	1
16	61-3080	Tube - Hydraulic L.H. Front	1



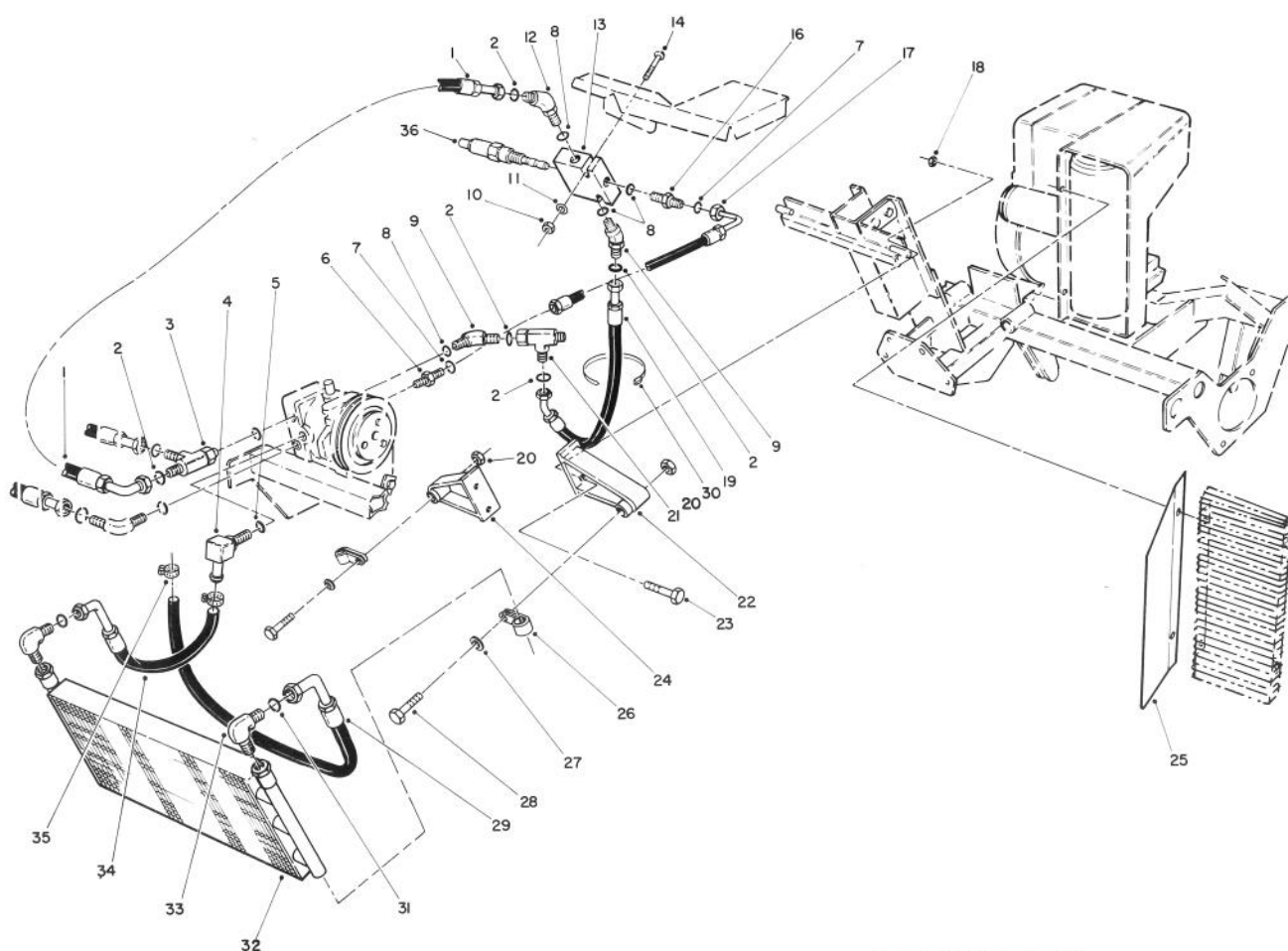
I. 12.914.6

## HYDRAULIC TANK & BATTERY ASSEMBLY

Ref. No.	Part No.	Description	No. Used
1	322-3	Screw - Cap Hex. Hd.	2
2	7-0534	Battery Clamp Assy	1
3	3217-6	Nut - Hex.	2
4	3296-16	Nut - Lock	2
5	3256-1	Washer - Flat	2
6	28-8080	Boot - Battery Terminal	1
7	28-1400	Battery - 12 Volt	1
8	10-8120	Bolt - Battery	2
9	61-2820	Shield	1
10	61-2380	Battery Support W.A.	1
11	3256-24	Washer - Flat	2
12	28-4210	Solenoid - Starter	1
13	3254-1	Washer - Lock	2
14	3219-14	Nut - Hex.	2
15	3253-4	Washer - Lock	2

Ref. No.	Part No.	Description	No. Used
16	3218-13	Nut - Lock	2
17	32104-17	Screw - Hex. Hd. Self Tap	2
18	3253-21	Washer - Lock	2
19	11-0590	Screw - Cap Hex. Hd.	2
20	322-43	Screw - Cap Hex. Hd.	4
21	3256-70	Washer - Flat	4
22	32128-25	Nut - Lock	2
23	63-5180	Hose - Hydraulic	1
24	2412-34	Clamp - Hose	2
25	61-0100	Tank - Hydraulic	1
26	62-7290	Decal - Hot	1
27	58-6530	Decal - Oil	1
28	61-2790	Screen - Filler	1
29	61-2800	Cap & Dipstick Assembly	1
30	32149-2	Nut - Hex.	2



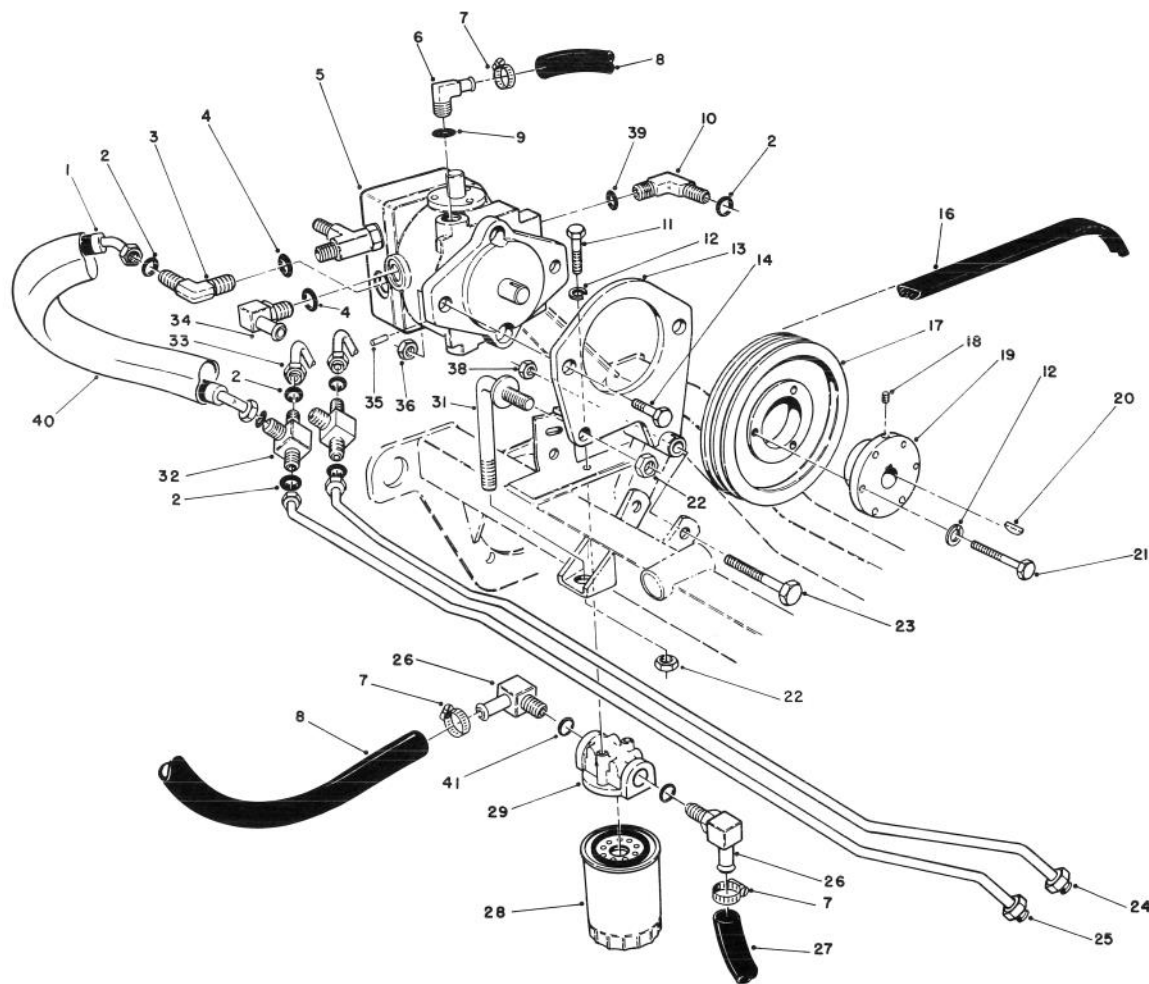


## HYDRAULIC OIL COOLER ASSEMBLY

Ref. No.	Part No.	Description	No. Used
1	63-4870	Hydraulic Hose Assembly	1
2	237-30	Seal - O-Ring	5
3	340-109	Fitting - Male Tee (Incl. Ref. #2)	1
4	353-954	Fitting - 90° Hose Elbow (Incl. Ref. #5)	1
5	237-79	Seal - O-Ring	1
6	340-107	Fitting - Straight (Incl. Ref. #7)	1
7	237-150	Seal - O-Ring	2
8	237-22	Seal - O-Ring	4
9	340-96	Fitting - 45° Elbow (Incl. Ref. #2 & 8)	2
10	3296-16	Nut - Hex.	2
11	3256-22	Washer - Flat	2
12	63-8770	Fitting - 45° Orifice (Incl. Ref. #2 & 8)	1
13	63-5080	Valve Assy. (Incl. Ref. #36)	1
14	321-11	Screw - Cap Hex. Hd.	2
15	3229-1	Bolt - Carriage	1
16	340-1	Fitting - Straight (Incl. Ref. #7 & 8)	1
17	63-4890	Hydraulic Hose Assembly	1

Ref. No.	Part No.	Description	No. Used
18	3296-29	Nut - Hex.	4
19	63-4880	Hydraulic Hose Assembly	1
20	3296-39	Nut - Hex.	2
21	340-104	Fitting - Male/Female Tee (Incl. Ref. #2)	1
22	63-5340	Bracket - Cooler L.H.	1
23	322-4	Screw - Cap Hex. Hd.	4
24	63-5350	Bracket - Cooler R.H.	1
25	63-8940	Shield - Cooler	1
26	2412-39	Clamp - R	2
27	3256-24	Washer - Flat	2
28	323-10	Screw - Cap Hex. Hd.	2
29	63-5180	Hydraulic Hose Assembly	1
30	3290-378	Tie - Cable	1
31	237-151	Seal - O-Ring	2
32	63-5400	Exchanger - Heat	1
33	340-108	Fitting - 90° Male Elbow (Incl. Ref. #31)	2
34	63-5170	Hydraulic Hose Assembly	1
35	2412-34	Clamp - Hose	2
36	63-8790	Valve - Pressure Sequence	1
*	63-8800	Seal Kit - Pressure Valve	1
*	56-7982	Sleeve - Protective	1

\*Not Illustrated



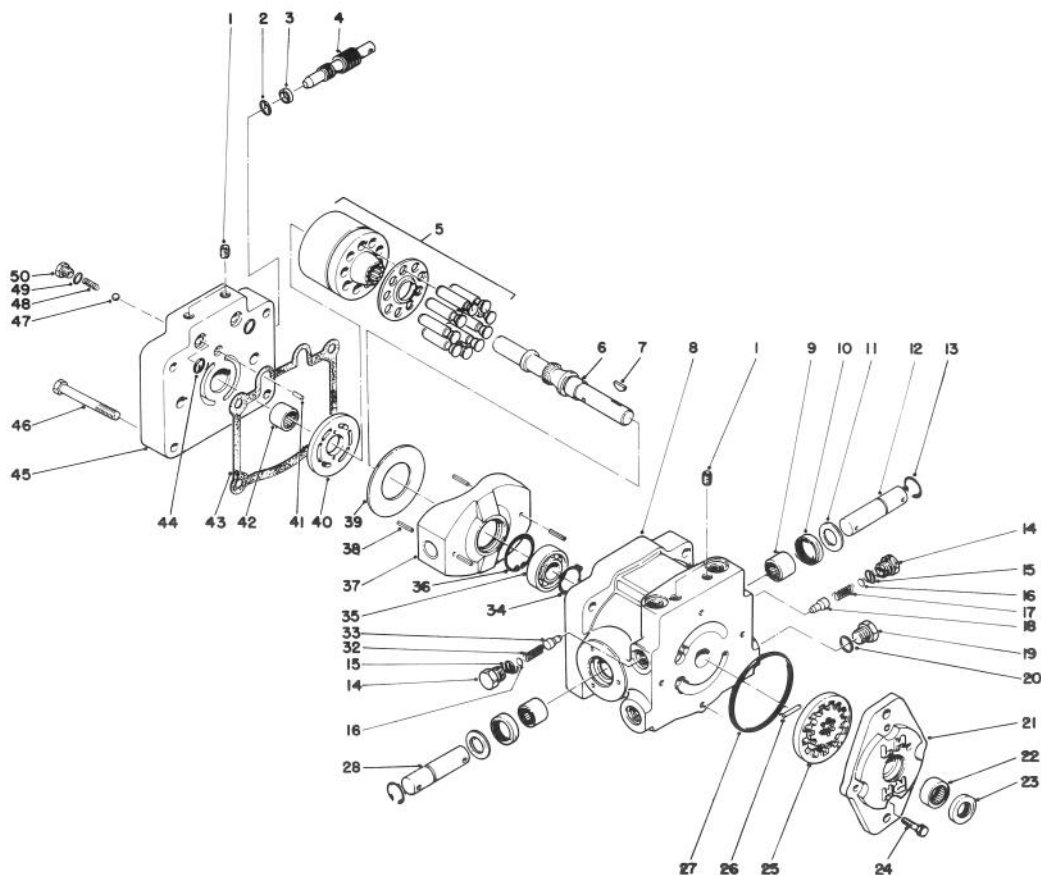
I.12.914.3

## HYDRAULIC DRIVE ASSEMBLY

Ref. No.	Part No.	Description	No. Used
1	61-3130	Hydraulic Hose	2
2	237-30	O-Ring	10
3	340-98	Fitting - 90° Elbow (Incl. Ref. #2 & 4)	1
4	237-79	O-Ring	2
5	61-0080	Pump Assembly (Incl Ref. #20)	1
6	61-2710	Fitting - 90° Hose Elbow (Incl. Ref. #9)	1
7	2412-3	Clamp - Hose	4
8	61-2540	Hose - Hydraulic	1
9	237-80	O-Ring	1
10	340-96	Fitting - 45° Elbow (Incl. Ref. #2 & 39)	3
11	321-4	Screw - Cap Hex. Hd.	2
12	3253-3	Washer - Lock	5
13	61-2230	Plate - Pump Mount	1
14	325-7	Screw - Cap Hex. Hd.	2
16	61-3400	V-Belt - Pump	1
17	61-3320	Pulley - Pump	1
18	3245-9	Screw - Set	1
19	61-3350	Bushing - Taper (Incl. Ref. #12, 18 & 21)	1

Ref. No.	Part No.	Description	No. Used
20	3257-32	Key - Woodruff	1
21	321-13	Screw - Cap Hex. Hd.	3
22	3296-39	Nut - Lock	3
23	325-18	Screw - Cap Hex. Hd.	1
24	61-3080	Tube - Hyd. L.H. (Rear)	1
25	61-3070	Tube - Hyd. L.H. (Front)	1
26	23-8910	Fitting - 90° Hose Elbow (Incl Ref. #41)	2
27	61-2550	Hose - Hydraulic	1
28	54-0110	Filter - Oil	1
29	61-3770	Head - Filter	1
31	63-8820	Adjustment Rod Assembly	1
32	340-102	Fitting - Tee (Incl. Ref. #2)	2
33	61-3060	Tube - Hyd. R.H.	2
34	353-954	Fitting - 90° Hose Elbow (Incl Ref. #4)	1
35	32121-48	Pin - Roll	1
36	3296-25	Nut - Lock	2
38	3296-23	Nut - Lock	1
39	237-22	O-Ring	2
40	56-7982	Sleeve - Protective	3
41	237-117	O-Ring	2

\*Not Illustrated

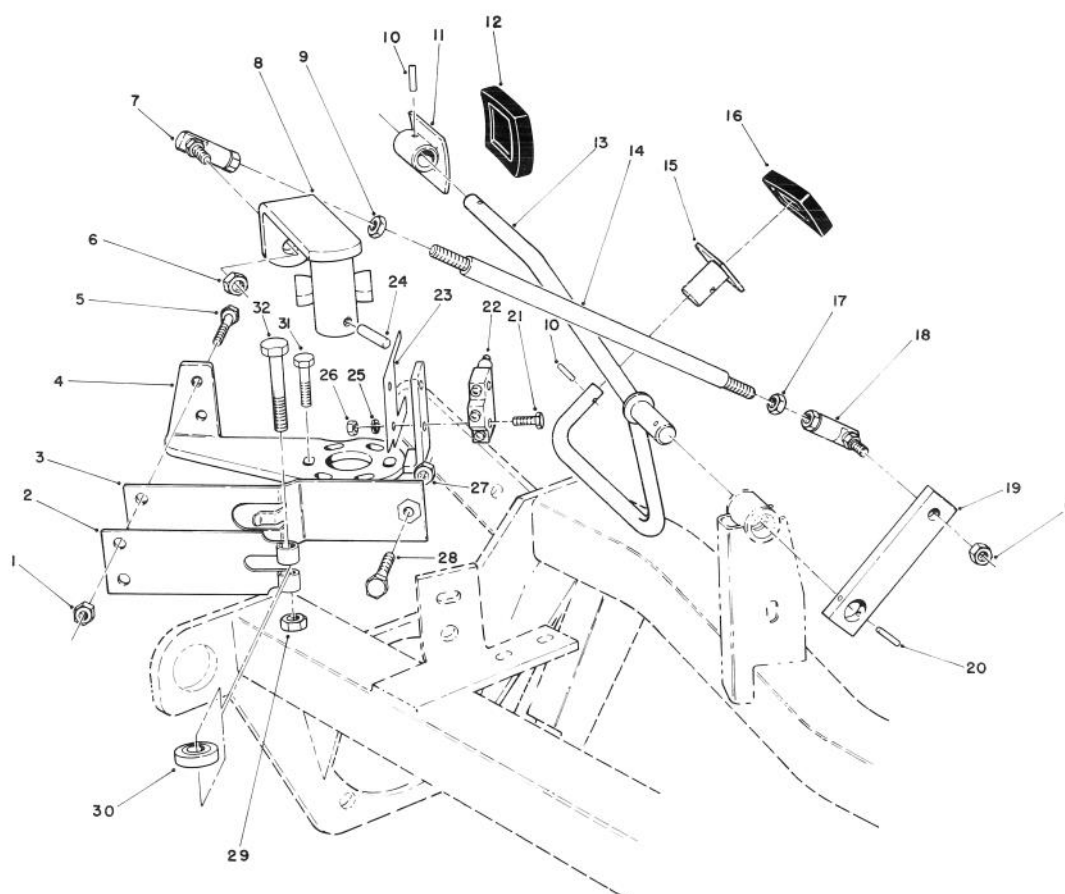


## HYDRAULIC PUMP ASSEMBLY NO. 61-0080

Ref. No.	Part No.	Description	No. Used
1	285-17	Plug - Pipe	6
2	237-22	O-Ring	1
3	25-2630	Ring	1
4	25-2620	Valve - By-Pass	1
5	48-1800	Cylinder Block Kit	1
6		Shaft - Pump	1
7	3257-32	Key - Woodruff	1
8	61-0080	Hydraulic Pump Assembly (Complete)	1
9	252-82	Bearing - Needle	2
10	25-3210	Seal - Lip	2
11	25-2510	Washer	2
12	25-2580	Shaft - Trunnion	1
13	32151-46	Ring - Retaining	2
14	25-2460	Plug	2
15	237-86	O-Ring	2
16	25-2470	Kit - Shim Pack	2
17	25-2570	Spring - Relief Valve	1
18	25-2560	Cone - Relief Valve	1
19		Plug Assy. (Incl. Ref. #20)	1
20		O-Ring	1
21	25-2690	Housing - Charge Pump	1
22		Bearing - Needle	1
23		Seal-Lip	1
24	322-4	Screw - Cap Hex. Hd.	4
25	25-2680	Gerotor Assembly	1

Ref. No.	Part No.	Description	No. Used
26	25-2530	Pin - Straight	1
27	237-35	O-Ring	1
28	49-8480	Shaft - Trunnion	1
32	25-2480	Spring - Charge Relief	1
33		Cone - Charge Relief	1
34	32120-15	Ring - Retaining	1
35	251-8	Bearing - Ball	1
36	32120-11	Ring - Retaining	1
37	25-2450	Swash/Plate	1
38	32121-91	Pin - Coiled Spring	3
39	25-2380	Plate - Thrust	1
40	25-2390	Plate - Valve	1
41	25-2430	Pin - Straight	1
42		Bearing - Needle	1
43	25-2400	Gasket	1
44	62-4290	O-Ring	2
45		Cap - Pump End	1
46	323-11	Screw - Cap Hex. Hd.	4
47	25-2490	Ball - Check Valve	2
48	25-2640	Spring - Check Valve	2
49	237-86	O-Ring	2
50	25-2650	Plug - Check Valve	2
*	25-3180	Kit - Check Valve (Incl. Ref. #47-50)	1
*	49-8520	Kit - Implement Relief (Incl. Ref. #14-18)	1

\*Not Illustrated

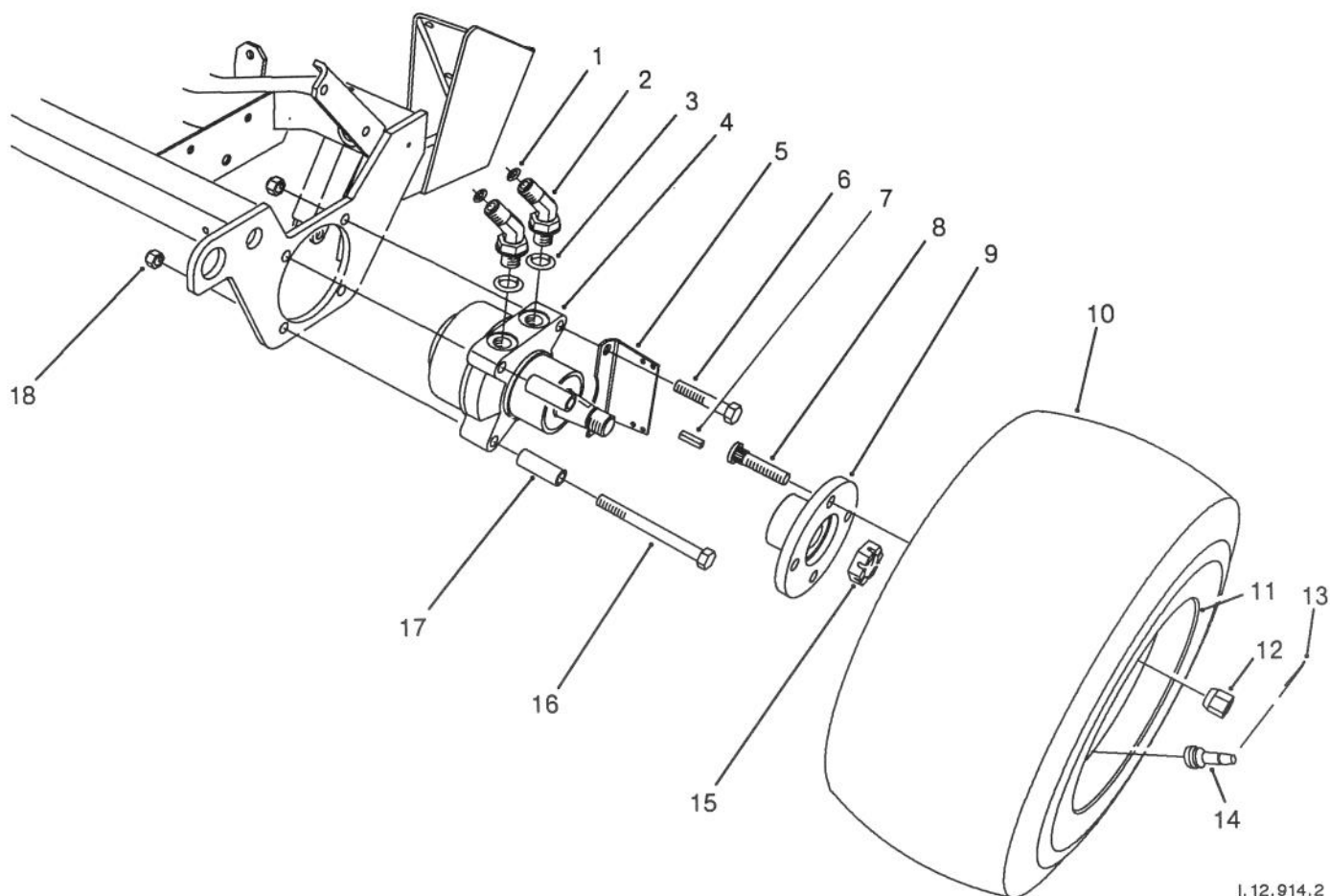


I. 12. 914. 11

## TRACTION CONTROLS ASSEMBLY

Ref. No.	Part No.	Description	No. Used
1	3296-42	Nut - Lock	2
2	29-6150	Spring - Leaf	1
3	29-6170	Spring - Extended Leaf	1
4	29-6120	Plate - Pump	1
5	321-4	Screw - Cap Hex. Hd.	2
6	3296-4	Nut - Lock	2
7	2411-35	Joint - Ball (L.H.)	1
8	61-2940	Lever - Pump	1
9	3220-20	Nut - Jam (L.H.)	1
10	32121-4	Pin - Roll	2
11	49-6440	Pedal - Fwd.	1
12	49-6470	Pad - Pedal Fwd.	1
13	61-2570	Traction Pedal Assembly	1
14	61-2620	Rod - Link	1
15	62-5030	Pedal - Reverse	1
16	49-6430	Pad - Pedal Reverse	1

Ref. No.	Part No.	Description	No. Used
17	3220-2	Nut - Jam (R.H.)	1
18	2411-33	Joint - Ball (R.H.)	1
19	61-2610	Arm - Traction	1
20	32121-16	Pin - Roll	1
21	3249-11	Screw - Mach. Rd. Hd.	2
22	29-6161	Switch - Micro	1
23	46-8810	Stop - Spring	1
24	32121-24	Pin - Roll	1
25	3254-9	Washer - Lock	2
26	3217-16	Nut - Lock	2
27	3219-2	Nut - Lock	1
28	3210-7	Screw - Cap Hex. Hd.	1
29	3296-29	Nut - Lock	1
30	251-259	Bearing - Ball	1
31	46-8560	Screw - Hex. Hd. Self Tap	3
32	322-17	Screw - Cap Hex. Hd.	1

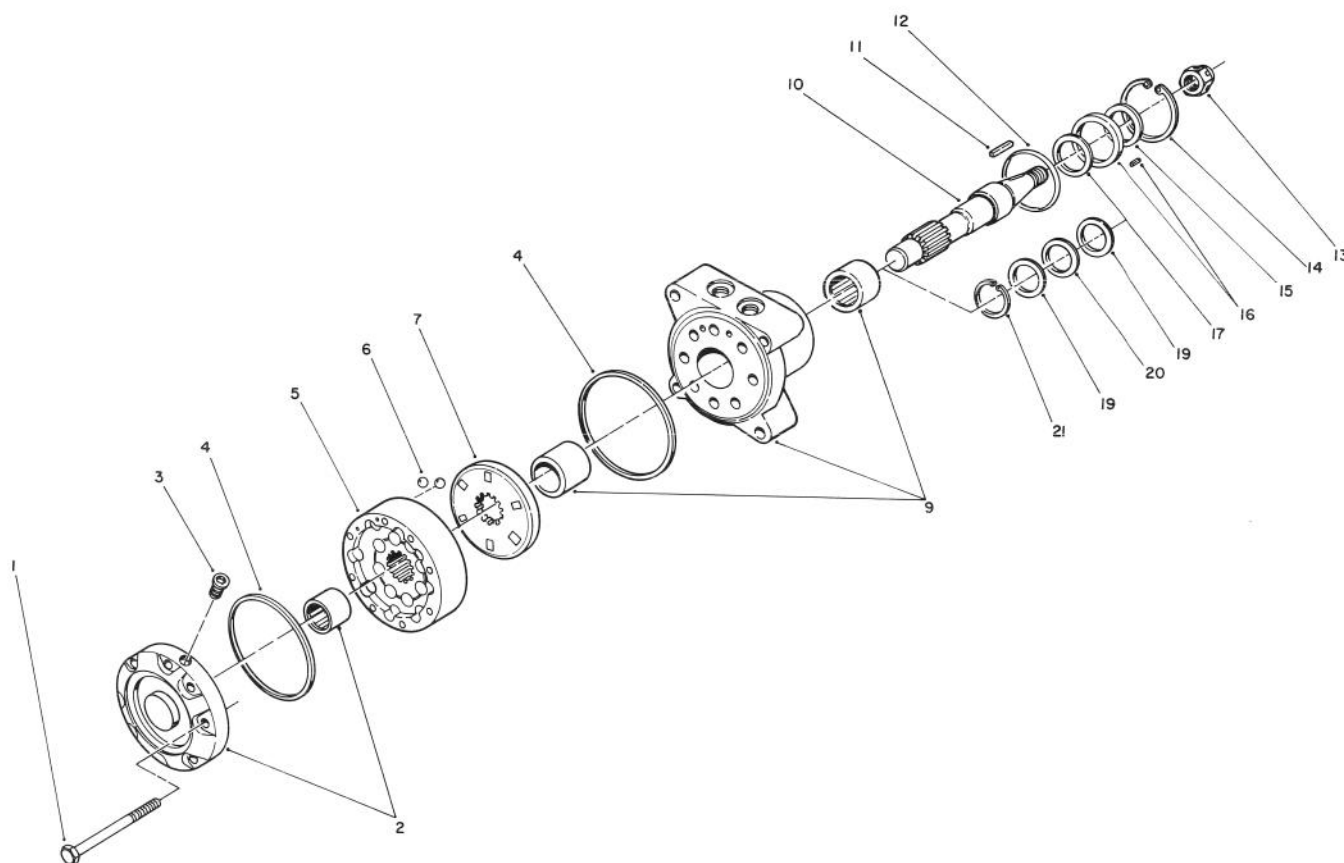


I. 12.914.2

## FRONT WHEEL ASSEMBLY

Ref. No.	Part No.	Description	No. Used
1	237-30	O-Ring	4
2	340-89	Fitting - 45° Elbow (Incl. Ref. #1 & 3)	4
3	237-80	O-Ring	4
4	66-5290	Motor - Hydraulic (Incl. Ref. #7 & 15)	2
5	62-5110	Bracket - Brake Spring	2
6	325-11	Screw - Cap Hex. Hd.	4
7	65-4640	Key - Square	2
8	10-6830	Stud - Drive	8

Ref. No.	Part No.	Description	No. Used
9	10-6870	Hub - Wheel	2
10	231-121	Tire	2
11	217-60	Rim - Wheel	2
12	242-50	Nut - Lug	8
13	3272-20	Pin - Cotter	2
14	232-27	Stem - Valve	2
15	65-4650	Nut - Slotted Hex.	2
16	325-22	Screw - Cap Hex. Hd.	4
17	61-3890	Spacer - Brake	4
18	3296-23	Nut - Lock	8



## HYDRAULIC DRIVE MOTOR NO. 66-5290

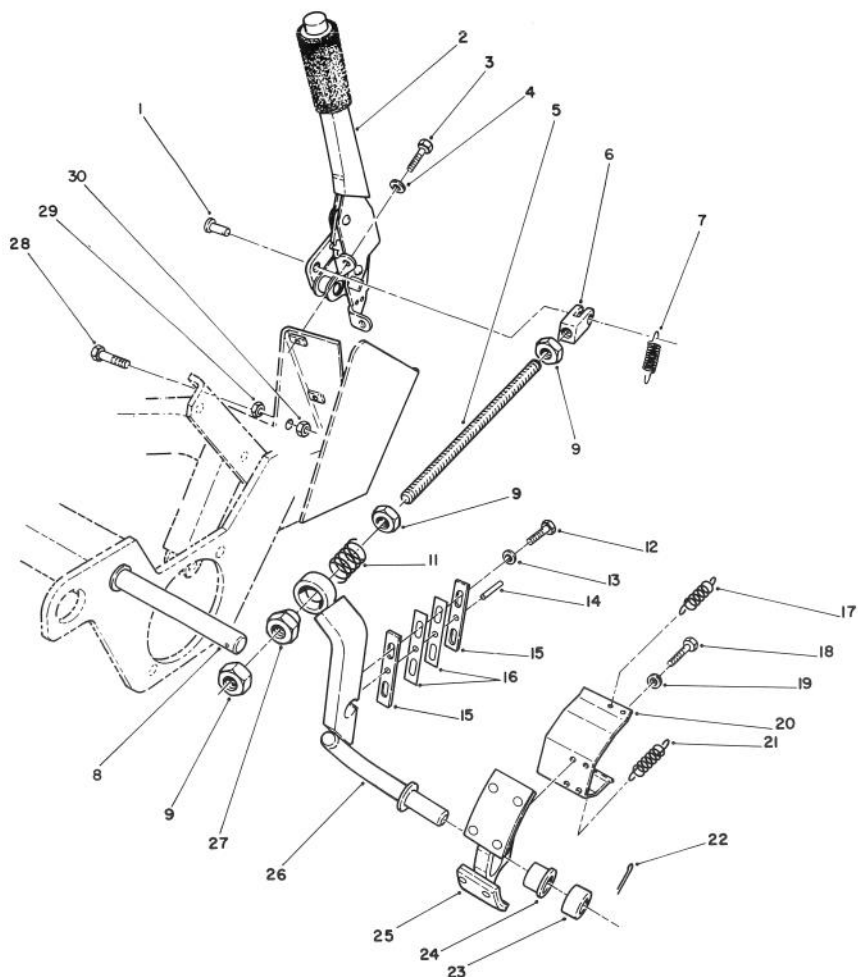
Ref. No.	Part No.	Description	No. Used
1	65-4580	Screw - Cap Hex. Hd.	8
2	65-4680	Cover & Bearing Assembly	1
3	65-4560	Plug - Hex. (Hollow)	1
4	65-4570	Seal - Square Ring	2
5	66-6110	IGR Assembly	1
6	65-4550	Valve - Check Ball	2
7	65-4540	Plate - Valve	1
9	65-4670	Body & Bearing Assembly	1
10	65-4660	Shaft	1
11	65-4640	Key - Square	1
12	65-4620	Seal - O-Ring	1
13	65-4650	Nut - Slotted Hex.	1

Ref. No.	Part No.	Description	No. Used
14	65-4500	Seal - Snap Ring	1
15†		Seal - Dust	1
16†		Retainer/Pin	1
17†		Seal - Lip	1
18	65-4690	Seal/Retainer Assembly (Incl. Ref. #15-17)	1
19	65-4600	Washer - Thrust	2
20	65-4610	Bearing - Thrust	1
21	65-4590	Ring - Snap	1
*	65-4700	Body Seal Kit (Incl. Ref. #4, 12 & 15-17)	1

\*Not Illustrated

† Not available from Toro as a replacement part.





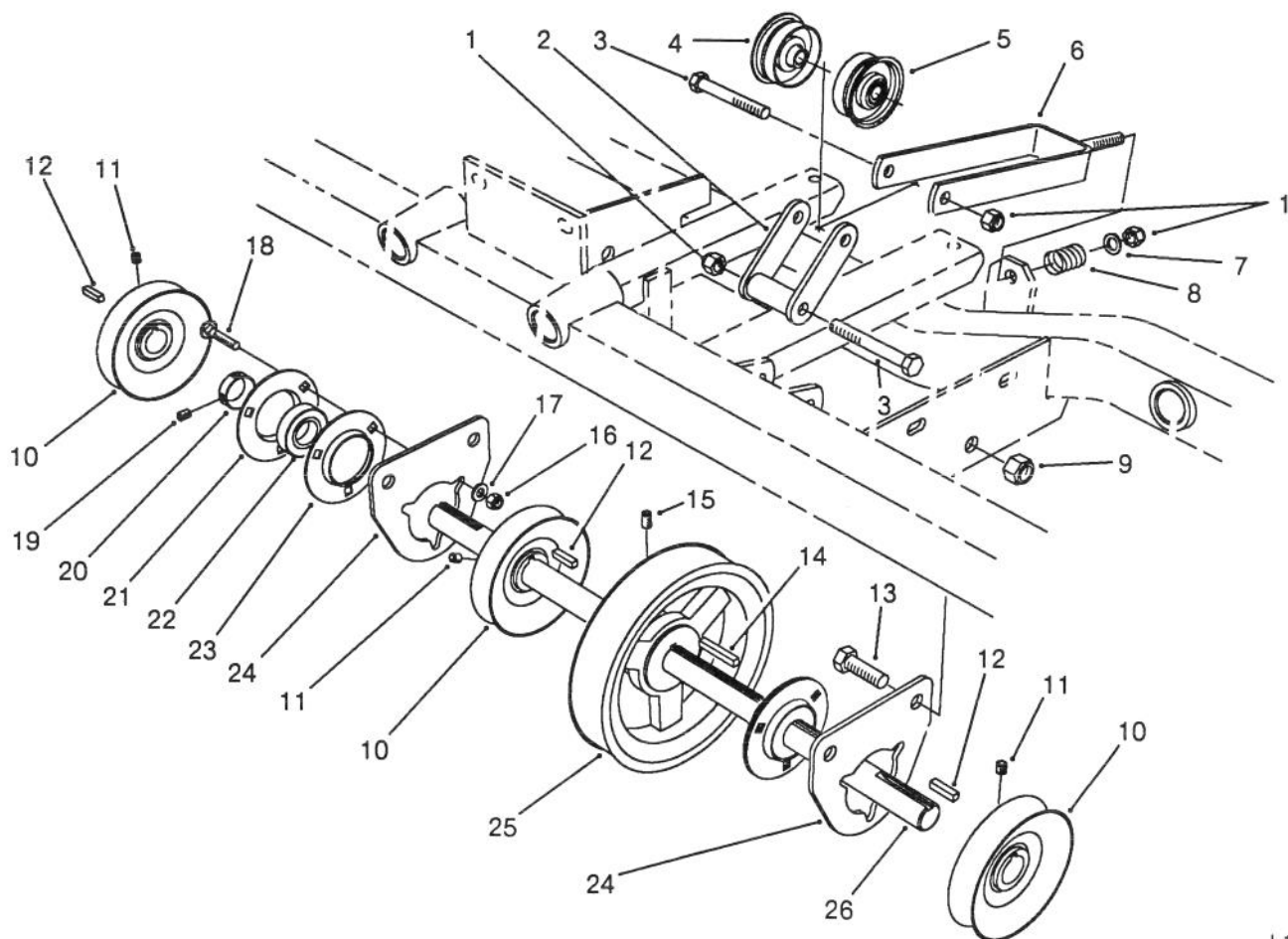
I. 12.914.21

## **BRAKE ASSEMBLY**

Ref. No.	Part No.	Description	No. Used
1	283-64	Pin - Clevis	1
2	61-3990	Brake Handle Assembly	1
3	322-5	Screw - Cap Hex. Hd.	2
4	3253-4	Washer - Lock	2
5	62-4910	Rod - Brake	1
6	62-4920	Clevis - Brake	1
7	5-7290	Spring - Extension	1
8	62-5060	Shaft - Brake	1
9	3220-5	Nut - Jam	3
11	62-5160	Spring - Compression	1
12	321-5	Screw - Cap Hex. Hd.	2
13	3253-3	Washer - Lock	2
14	32121-6	Pin - Roll	2
15	61-3980	Plate - Slide (Outer)	2
16	62-7130	Plate - Slide (Inner)	2

Ref. No.	Part No.	Description	No. Used
17	62-7110	Spring - Extension (Upper)	4
18	32105-8	Screw - Slot Hex.	2
19	3254-1	Washer - Lock	4
20	62-5100	Bracket - Return Spring	2
21	62-5170	Spring - Extension (Lower)	4
22	3272-16	Pin - Cotter	2
23	62-7160	Spacer	2
24	256-291	Bushing - Flange	2
25	62-4930	Shoe - Brake	2
26	61-3950	Arm - Brake (L.H.)	1
*	61-3910	Arm - Brake (R.H.)	1
27	242-50	Nut - Lug	1
28	322-7	Screw - Cap Hex. Hd.	1
29	3217-6	Nut - Jam	1
30	3296-29	Nut - Lock	1

\*Not Illustrated



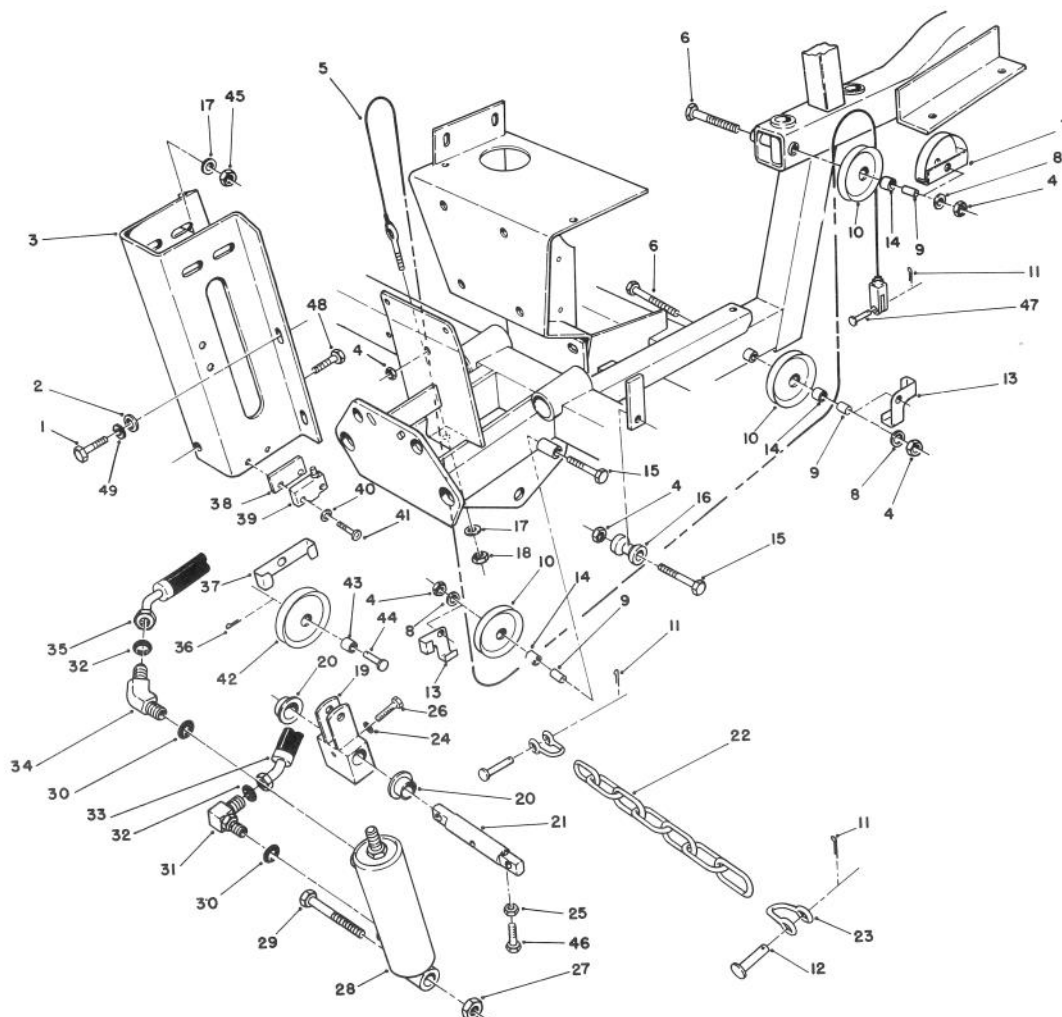
I.12.914.5

## JACKSHAFT ASSEMBLY

Ref. No.	Part No.	Description	No. Used
1	3296-39	Nut - Lock	3
2	61-2290	Idler Bracket W.A.	1
3	323-20	Screw - Cap Hex. Hd.	2
4	65-5800	Pulley Half - Idler	1
5	65-5880	Pulley Half - Idler	1
6	61-2320	Belt Tensioner W.A.	1
7	3256-24	Washer - Flat	1
8	20-6110	Spring - Compression	1
9	3296-23	Nut - Lock	4
10	61-0140	Pulley - Jackshaft	3
11	3242-2	Screw - Set	6
12	5-7280	Key - Square (Short)	3
13	325-4	Screw - Cap Hex. Hd.	4
14	3-3267	Key - Square (Long)	1

Ref. No.	Part No.	Description	No. Used
15	3242-6	Screw - Set	2
16	3296-29	Nut - Lock	6
17	3256-23	Washer - Flat	6
18	3230-10	Bolt - Carriage	6
19	3245-35	Screw - Set	4
20	251-77	Collar - Locking (Incl. Ref. #19)	2
21	251-319	Flange - Bearing (Lube)	2
*	302-11	Fitting - Grease	2
22	251-320	Bearing	2
23	251-229	Flange - Bearing	2
24	61-2350	Mount - Bearing	2
25	61-0070	Pulley - Poly V	1
26	61-2340	Shaft - Drive	1

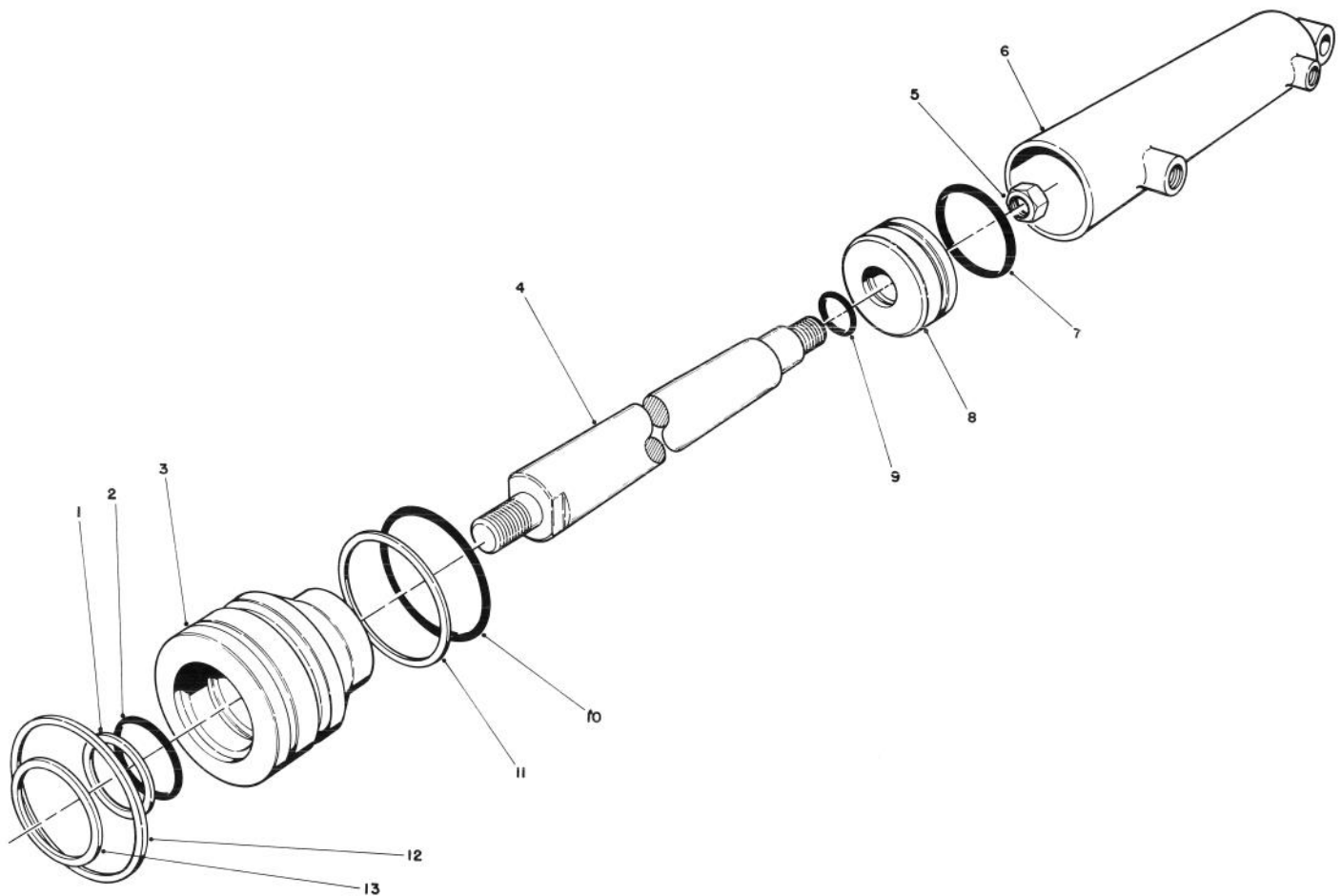
\*Not Illustrated



I. 12.914.9

## CUTTING UNIT LIFT ASSEMBLY

Ref. No.	Part No.	Description	No. Used	Ref. No.	Part No.	Description	No. Used
1	11-0590	Screw - Thread Forming	4	27	3296-41	Nut - Lock	1
2	3256-24	Washer - Flat	4	28	61-0090	Cylinder - Lift	1
3	61-2420	Bracket - Cyl. Support	1	29	3214-13	Screw - Cap Hex. Hd.	1
4	3296-39	Nut - Lock	5	30	237-42	O-Ring	2
5	61-3260	Cable - Lift	1	31	340-77	Fitting - 90° Elbow (Incl. Ref. #30 & 32)	1
6	323-16	Screw - Cap Hex. Hd.	2	32	237-22	O-Ring	2
7	61-3240	Keeper - Cable	1	33	61-2490	Hydraulic Hose Assy.	1
8	3256-4	Washer - Flat	3	34	340-87	Fitting - 45° Elbow (Incl. Ref. #30 & 32)	1
9	61-3230	Spacer - Pulley	3	35	61-2500	Hydraulic Hose Assy.	1
10	61-3210	Pulley - Cable (Incl. Ref. #14)	3	36	3272-6	Pin - Cotter	1
11	3272-10	Pin - Cotter	5	37	5-2655	Keeper - Cable	1
12	283-6	Pin - Clevis	4	38	61-2990	Spacer - Switch	1
13	5-2656	Keeper - Cable	2	39	29-6161	Switch - Micro	1
14	256-1	Bushing	3	40	3254-9	Washer - Lock	2
15	323-13	Screw - Cap Hex. Hd.	2	41	3250-35	Screw - Pan Hd. Mach.	2
16	61-1940	Roller - Cable	1	42	5-2653	Pulley - Cable (Incl. Ref. #43)	1
17	3256-23	Washer - Flat	5	43	256-2	Bushing	1
18	3296-4	Nut - Lock	3	44	283-42	Pin - Clevis	1
19	61-2430	Hub - Lift	1	45	3296-29	Nut - Lock	4
20	256-289	Bushing - Flange	2	46	32105-18	Screw - Cap Hex. Hd.	1
21	61-2480	Pin - Cylinder	1	47	283-58	Pin - Clevis	1
22	61-3830	Chain - Lift	2	48	323-6	Screw - Cap Hex. Hd.	1
23	282-4	Shackle - Chain	4	49	3253-21	Washer - Lock	4
24	3253-3	Washer - Lock	1				
25	3218-1	Nut - Jam	1				
26	321-4	Screw - Cap Hex. Hd.	1				

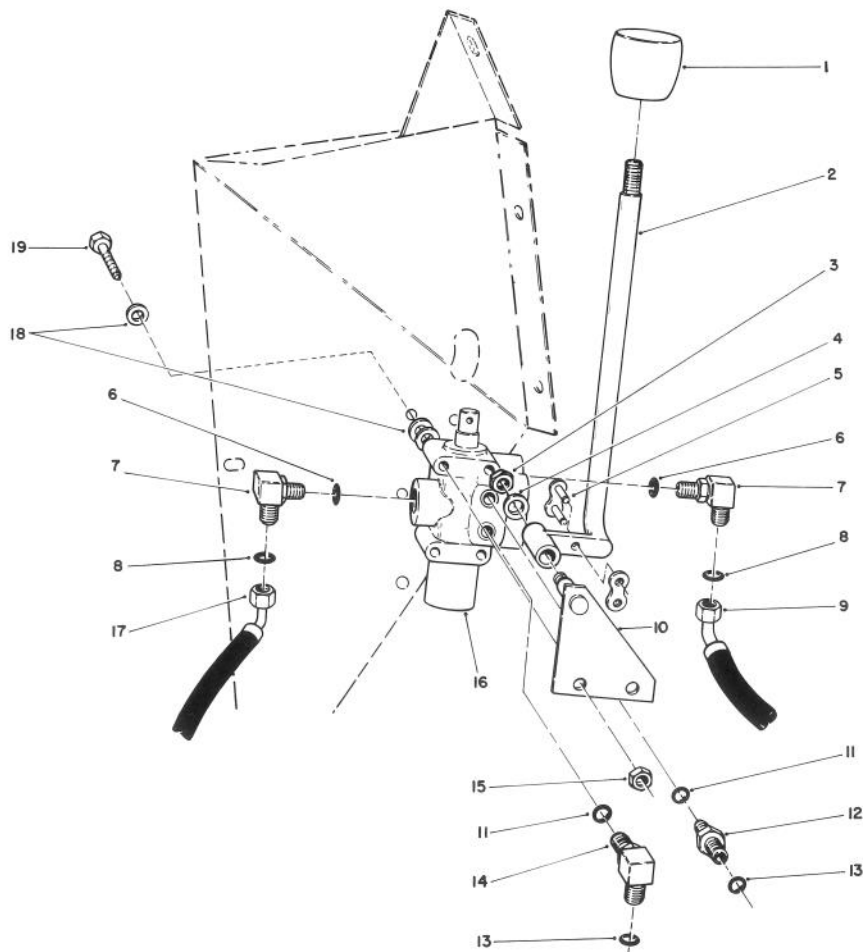


## HYDRAULIC CYLINDER NO. 61-0090

Ref. No.	Part No.	Description	No. Used
1		Washer - Backup	1
2		O-Ring	1
3	61-3110	Head	1
4	61-3100	Shaft	1
5	32152-6	Nut - Lock	1
6		Barrel	1
7		Uniring	1
8	61-1880	Piston	1

Ref. No.	Part No.	Description	No. Used
9		O-Ring	1
10		O-Ring	1
11		Washer - Backup	1
12	61-3120	Ring - Retaining	1
13		Seal - Dust	1
*	61-3200	Repair Kit (Incl. Ref. #1-2, 7, 9-11 & 13)	1

\*Not Illustrated

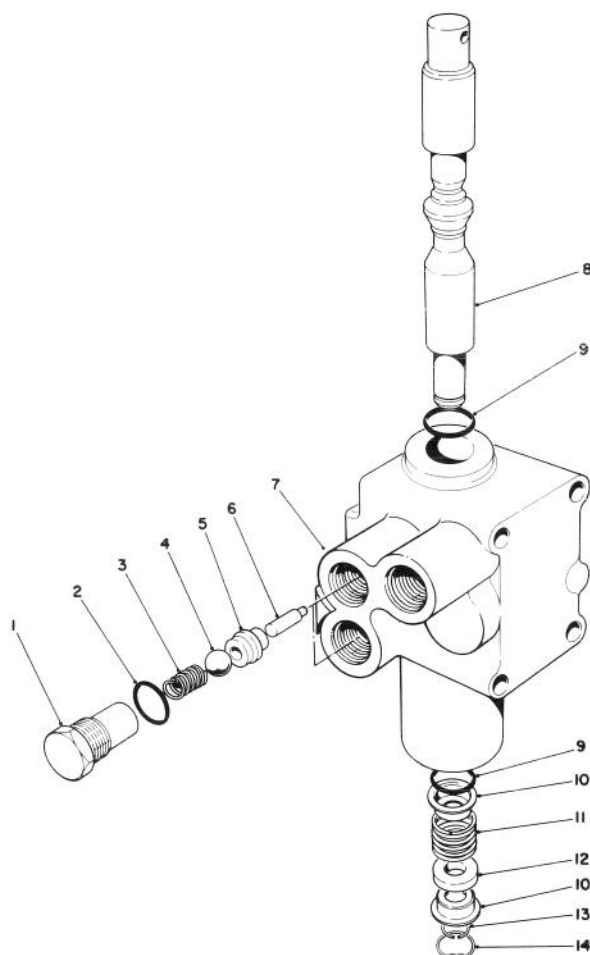


I. 12. 914. 12

## CUTTING UNIT LIFT CONTROL VALVE ASSEMBLY

Ref. No.	Part No.	Description	No. Used
1	233-37	Knob	1
2	61-2750	Lever - Valve	1
3	3296-39	Nut - Lock	1
4	3256-45	Washer	1
5	2710-16	Link - Chain	1
6	237-79	O-Ring	2
7	340-99	Fitting - 90° Elbow (Incl. Ref. #6 & 8)	2
8	237-22	O-Ring	2
9	61-2510	Hydraulic Hose Assy. (Low)	1
10	61-2720	Bracket - Lever	1

Ref. No.	Part No.	Description	No. Used
11	237-78	O-Ring	2
12	340-88	Fitting - Straight (Incl. Ref. #11 & 13)	1
13	237-21	O-Ring	2
14	340-97	Fitting - 90° Elbow (Incl. Ref. #11 & 13)	1
15	3296-16	Nut - Lock	3
16	43-1950	Valve - Hydraulic	1
17	61-2520	Hydraulic Hose Assy. (Up)	1
18	3256-22	Washer - Flat	9
19	321-23	Screw - Cap Hex. Hd.	3



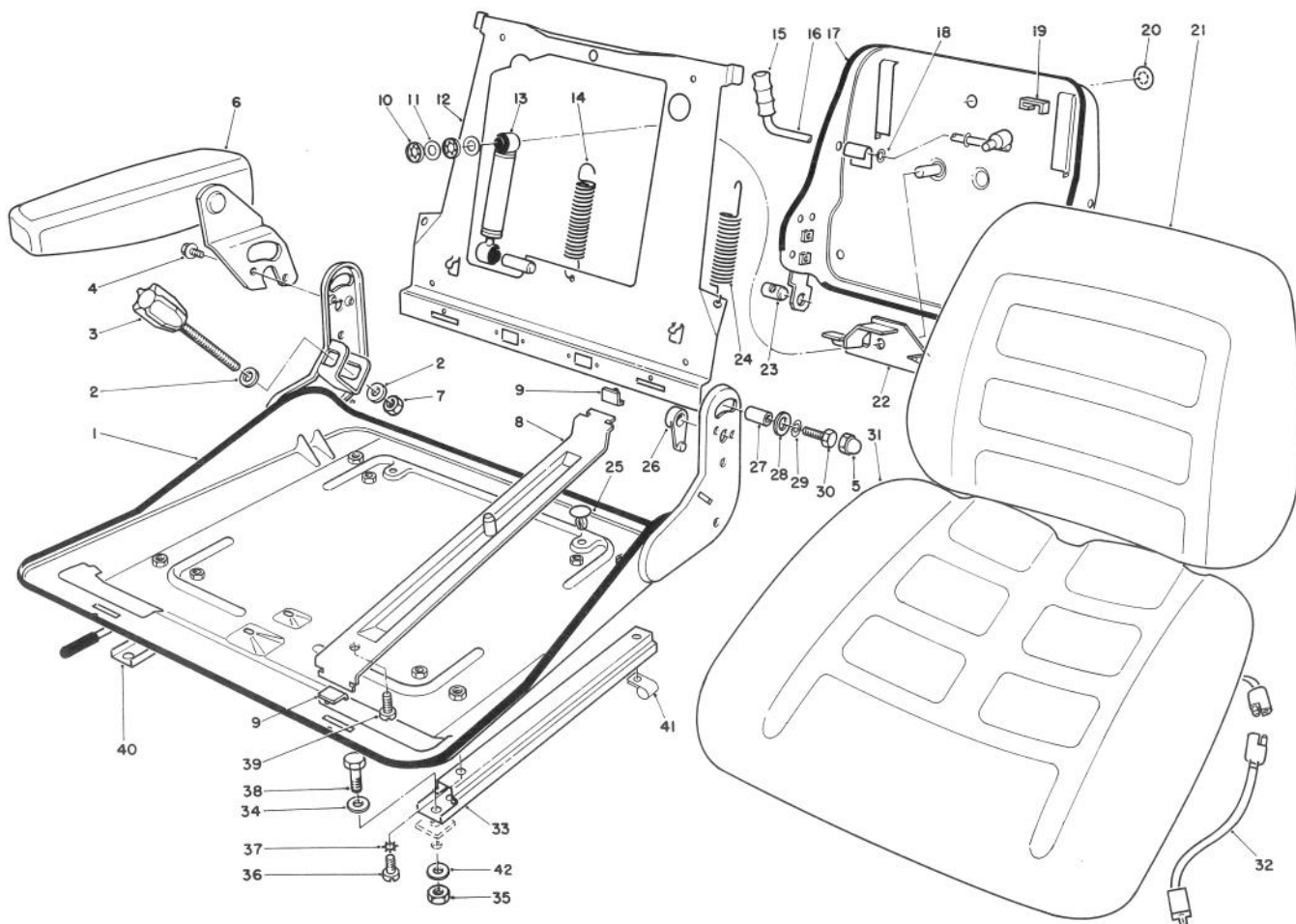
## CONTROL VALVE NO. 43-1950

Ref. No.	Part No.	Description	No. Used
1	22-8330	Plug	2
2	237-42	O-Ring	2
3	22-8340	Spring	2
4	22-8350	Ball	2
5	22-8370	Seat - Check Valve	2
6	22-8360	Pin - Cam	2
7†		Body	1

Ref. No.	Part No.	Description	No. Used
8	22-8420	Spool	1
9	22-8500	O-Ring	2
10	22-8380	Retainer - Spring	2
11	22-8410	Spring	1
12	23-3030	Spacer	1
13	22-8480	Snap-Ring - Spool	1
14	22-8490	Snap-Ring	1

†Note: Order complete assembly.



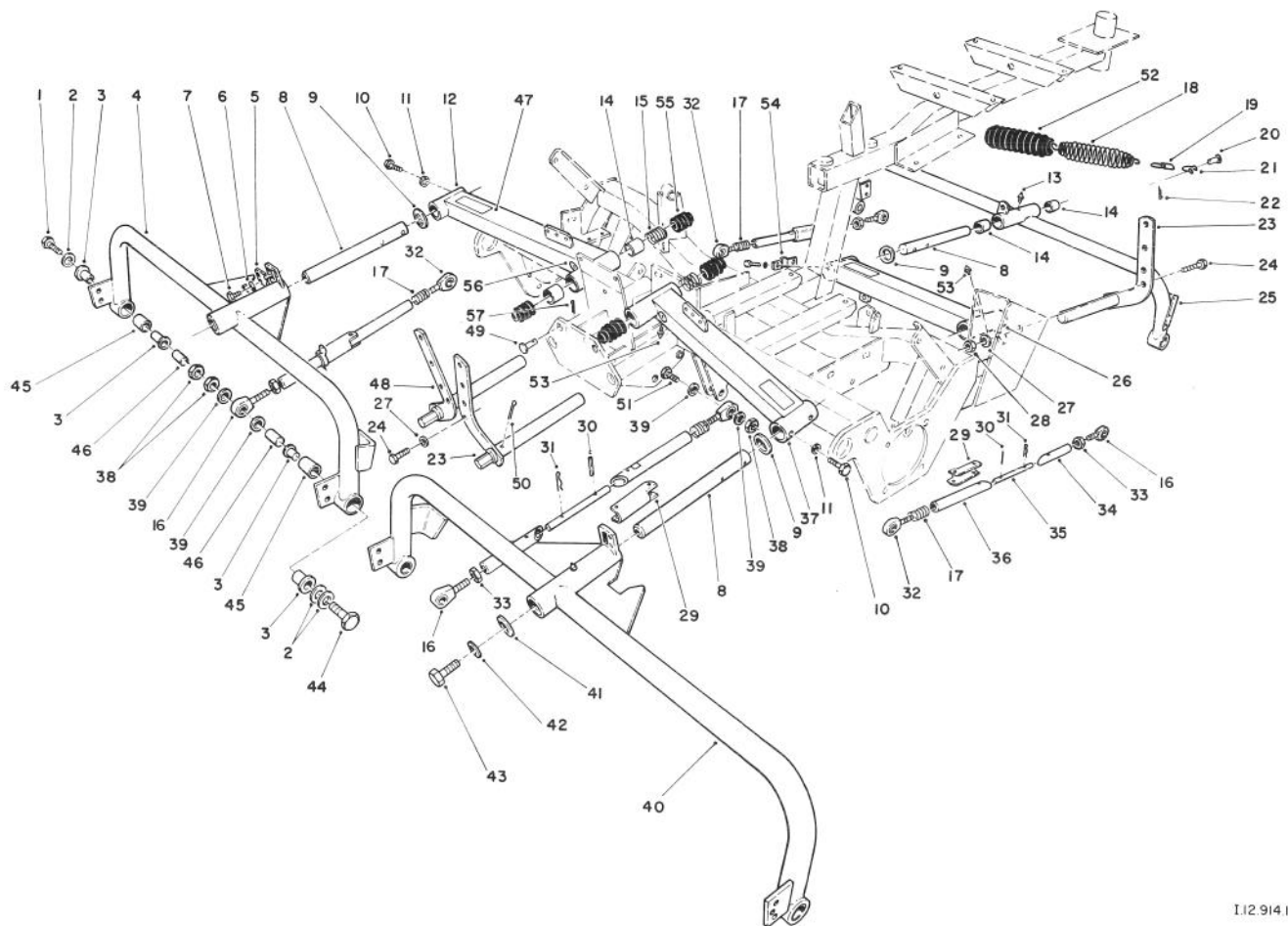


## SEAT ASSEMBLY MODEL NO. 30756 (Optional)

Ref. No.	Part No.	Description	No. Used
1	56-3810	Platform - Seat	1
2	56-3880	Washer - Flat	2
3	56-3870	Knob - Adjustment	1
4	56-3850	Screw - Hex. Hd. Machine	2
5	56-3960	Cover - Screw	4
6	55-4331	Arm Rest Assembly R.H.	1
*	55-4330	Arm Rest Assembly L.H.	1
7	56-3890	Nut - Hex.	1
8	56-3970	Carrier - Seat	2
9	56-3980	Clip - Rail	4
10	56-4080	Clamp - Axle	2
11	56-4090	Washer - Flat	2
12	56-4040	Plate - Back	1
13	62-7670	Shock Absorber - Seat	1
14	56-4050	Spring - Extension	1
15		Grip - Cover	1
16	56-4150	Lever - Handle (Incl. Ref. #15)	1
17	56-3820	Cover - Seat Back	1
18	56-4160	Washer - Flat	2
19	56-4130	Bumper	2
20	56-4120	Cover	1
21	56-3800	Cushion - Seat Back	1
22	56-4100	Bracket - Lever	1

Ref. No.	Part No.	Description	No. Used
23	56-4170	Pin - Clevis	1
24	56-4060	Spring - Extension	1
25	56-4190	Cap - Seat	2
26	56-3900	Spacer - Arm L.H.	1
*	56-3910	Spacer - Arm R.H.	1
27	56-3920	Bushing - Sleeve	4
28	56-3930	Washer - Flat	4
29	56-3940	Washer - Lock	4
30	56-3950	Screw - Cap Hex. Hd.	4
31	56-3790	Cushion - Seat Bottom	1
32	55-8380	Seat Wire Assembly	1
33	56-4000	Bottom Rail Assembly L.H.	1
34	3256-23	Washer - Flat	4
35	3296-29	Nut - Lock	4
36	56-4020	Screw - Machine	4
37	56-4030	Washer - Lock	4
38	322-5	Screw - Cap Hex. Hd.	4
39	56-3990	Screw - Machine	2
40	56-4010	Bottom Rail Assembly R.H.	1
41	2412-67	Clamp - R	1
42	3256-3	Washer - Flat	4
*	55-8420	Seat Assembly (Incl. Ref. #1-3, 5, 7-31, 33, 36-37 & 39-40)	1

\*Not Illustrated



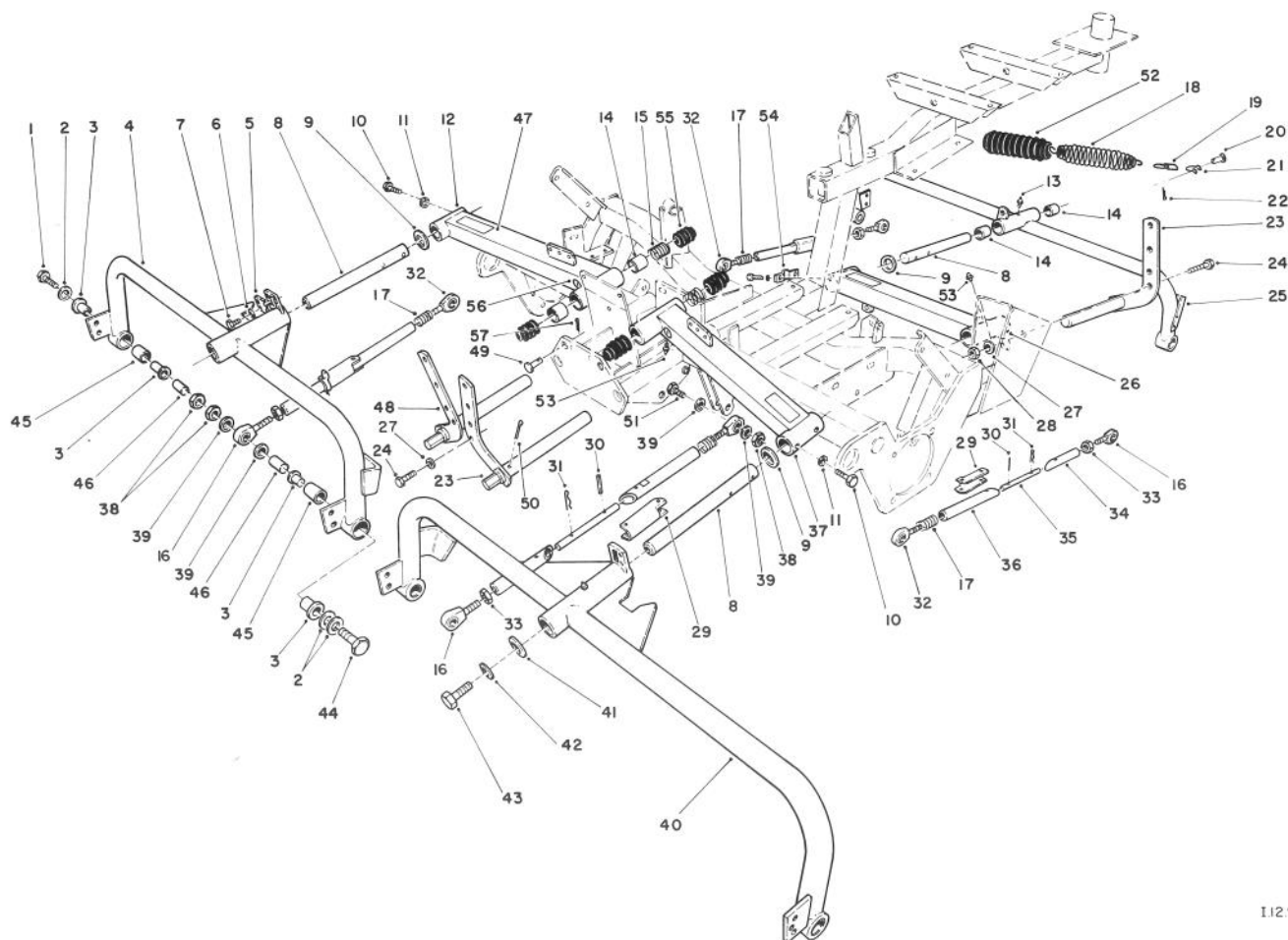
I12 914 10

## CUTTING UNIT CARRIER FRAME ASSEMBLY

Ref. No.	Part No.	Description	No. Used
†1	325-10	Screw - Cap Hex. Hd.	2
†2	3256-26	Washer - Flat	6
†3	256-285	Bushing - Flange	12
†4	61-0860	Carrier Frame R.H. (Incl. Ref. #13, 14 & 45)	1
5	61-3600	Tab - Lift	3
6	3253-3	Washer - Lock	6
7	321-2	Screw - Cap Hex. Hd.	6
8	61-3000	Rod - Pivot	3
9	256-115	Washer - Thrust	3
10	322-4	Screw - Cap Hex. Hd.	6
11	3253-4	Washer - Lock	6
12	61-2830	Lift Arm - R.H. (Incl. Ref. #14 & 53)	1
†13	302-5	Fitting - Grease	3
14	3-0348	Bushing	12
15	61-3270	Spring - Compression	2
16	61-3530	Balljoint - R.H. Thread	4
17	62-5160	Spring - Compression	4
18	5-0743	Spring - Extension	3
19	62-7300	Chain - Adjustment	1
20	283-6	Pin - Clevis	3
21	282-4	Shackle - Spring	3

Ref. No.	Part No.	Description	No. Used
22	3272-10	Pin - Cotter	3
23	61-2930	Pivot Shaft L.H.	2
24	323-7	Screw - Cap Hex. Hd.	3
†25	61-0870	Carrier Frame - Rear (Incl. Ref. #13, 14 & 45)	1
26	61-2890	Lift Arm - Rear (Incl. Ref. #14 & 53)	1
27	3256-4	Washer - Flat	5
28	3296-39	Nut - Lock	6
29	61-3510	Handle - Belt Tension	4
30	32121-6	Pin - Roll	4
31	3290-468	Hairpin - Cotter	4
32	61-3540	Balljoint - L.H. Thread	4
33	3220-5	Nut - Jam	4
34	61-3480	Rod - Belt Tension (Short)	4
35	61-3500	Rod - Belt Tension	4
36	61-3490	Rod - Belt Tension (Long)	4
37	61-2880	Lift Arm - L.H. (Incl. Ref. #14 & 53)	1
38	3296-45	Nut - Lock	10
39	61-0640	Spacer - Balljoint	16
†40	61-0880	Carrier Frame L.H. (Incl. Ref. #13, 14 & 45)	1

† For 8 blade cutting units only.



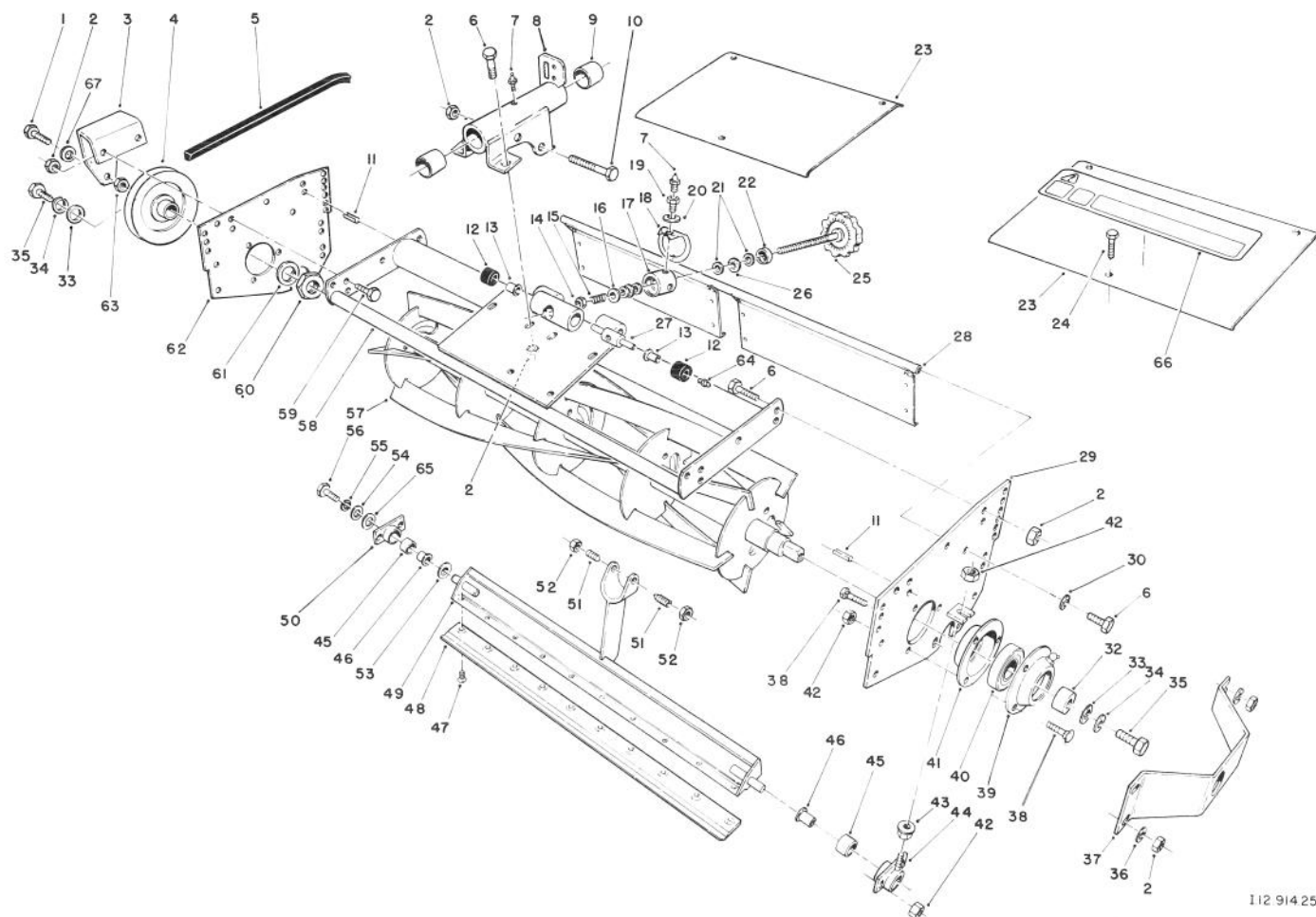
I 12 914 10

## CUTTING UNIT CARRIER FRAME ASSEMBLY (Continued)

Ref. No.	Part No.	Description	No. Used
41	3256-6	Washer - Flat	3
42	3253-7	Washer - Lock	3
43	325-4	Screw - Cap Hex. Hd.	3
†44	325-14	Screw - Cap Hex. Hd.	4
†45	61-0710	Bushing Assy.	6
†46	61-1370	Spacer	6
47	61-3610	Decal - Warning	3
48	61-2900	Pivot Shaft R.H.	1
49	283-8	Pin - Clevis	3

Ref. No.	Part No.	Description	No. Used
50	3272-17	Pin - Cotter	3
51	325-8	Screw - Cap Hex. Hd.	4
52	62-7240	Sleeve - Spring	1
53	302-60	Fitting - Grease	3
54	61-3820	Retainer - Cable	1
55	62-7250	Boot	6
56	58-6520	Decal - Grease Fitting	3
57	3290-322	Hairpin - Cotter	3

† For 8 blade cutting units only.



112 914 25

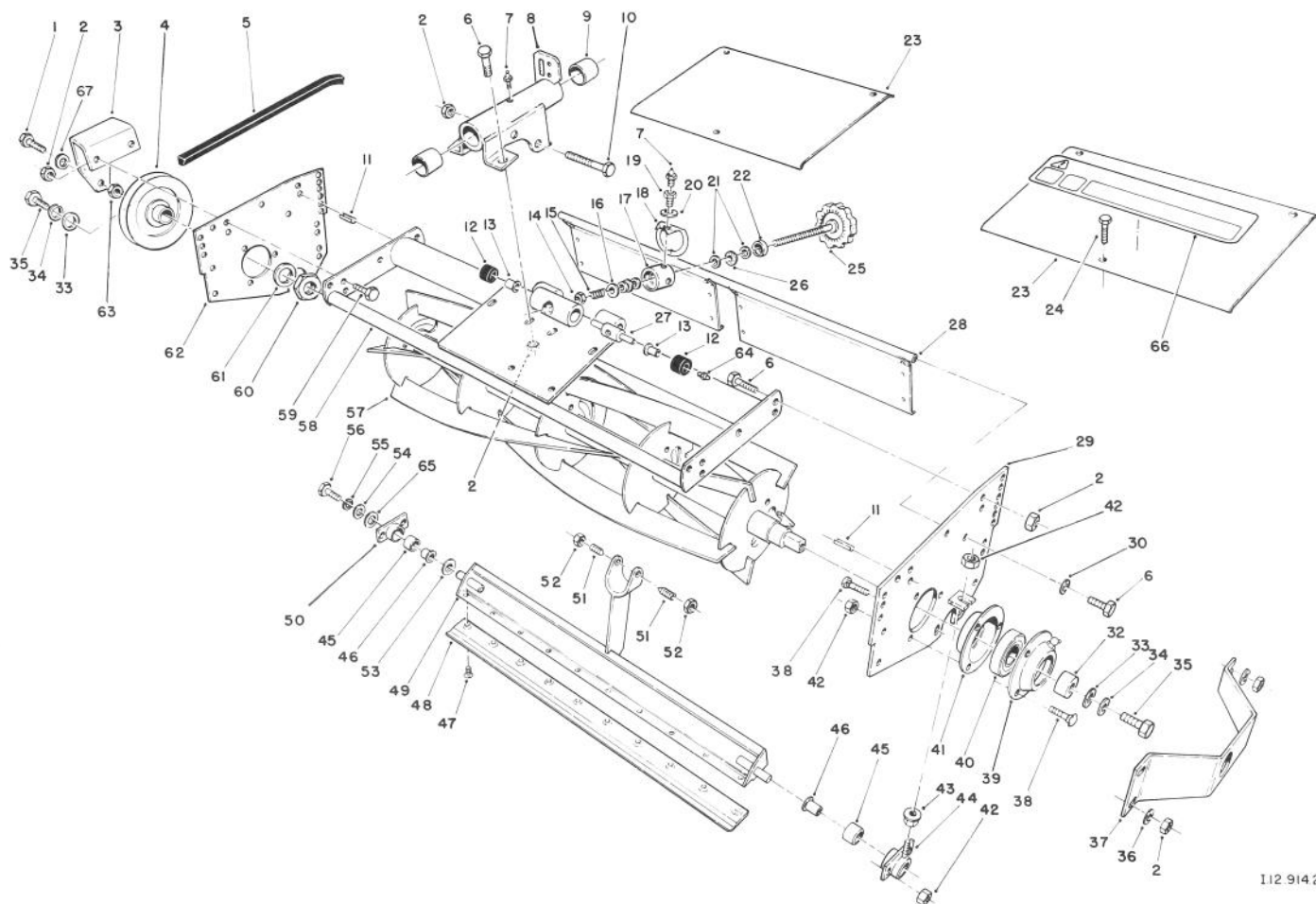
## 5 BLADE CUTTING UNIT REEL ASSEMBLY

Ref. No.	Part No.	Description	No. Used
1	325-7	Screw - Cap Hex.Hd.	1
2	3296-39	Nut - Lock (Use 14 nuts on rear cutting unit)	12
3	61-0900	Bracket - Tensioner (Use 2 brackets on rear cutting unit)	1
4	61-0160	Pulley - Reel, 5 Blade	1
5	61-3380	V-Belt	1
6	323-6	Screw - Cap Hex. Hd.	8
7	302-5	Fitting - Grease	2
8	61-1050	Front Support - L.H. (Incl. Ref. #7 & 9)	1
*	61-3660	Front Support - R.H. (Incl. Ref. #7 & 9)	1
*	61-0670	Rear Support - (Incl. Ref. #7 & 9)	1
9	3-0348	Bushing	2
10	323-12	Screw - Cap Hex. Hd.	1
11	32121-36	Pin - Roll	4
12	62-5510	Rubber Bushing Assembly	2
13	52-2890	Bushing - Flanged Nylon	2
14	3296-62	Nut - Lock	1
15	57-5270	Spring - Compression	1

Ref. No.	Part No.	Description	No. Used
16	29-8870	Washer - Flat	1
17	52-2980	Pivot - Single Point Adjust	1
18	52-3000	Arm - Spring	1
19	52-2990	Capscrew - Spring Retainer	1
20	3256-25	Washer - Flat	1
21	257-5	Washer - Thrust	4
22	253-84	Seal	1
23	61-0550	Shield - Top	2
24	32144-10	Screw - Cap Hex. Hd.	6
25	61-1070	Handle - Assy	1
26	257-6	Bearing - Thrust	2
27	57-5260	Pin - S.P.A.	1
28	61-1130	Rear Grass Guard	1
29	61-0940	Sideplate - Adjust	1
30	3253-5	Washer - Lock	2
32	61-0500	Spacer - Bearing	1
33	5-0838	Washer - Flat	2
34	3253-21	Washer - Lock	2
35	3211-4	Screw - Cap Hex. Hd.	2
36	3256-3	Washer - Flat	5
37	61-0610	Guard - Side (Used on front cutting units only)	1
38	3230-20	Bolt - Carriage	10

NOTE: Front left cutting unit shown.

\*Not Illustrated



112 91425

## 5 BLADE CUTTING UNIT REEL ASSEMBLY (Continued)

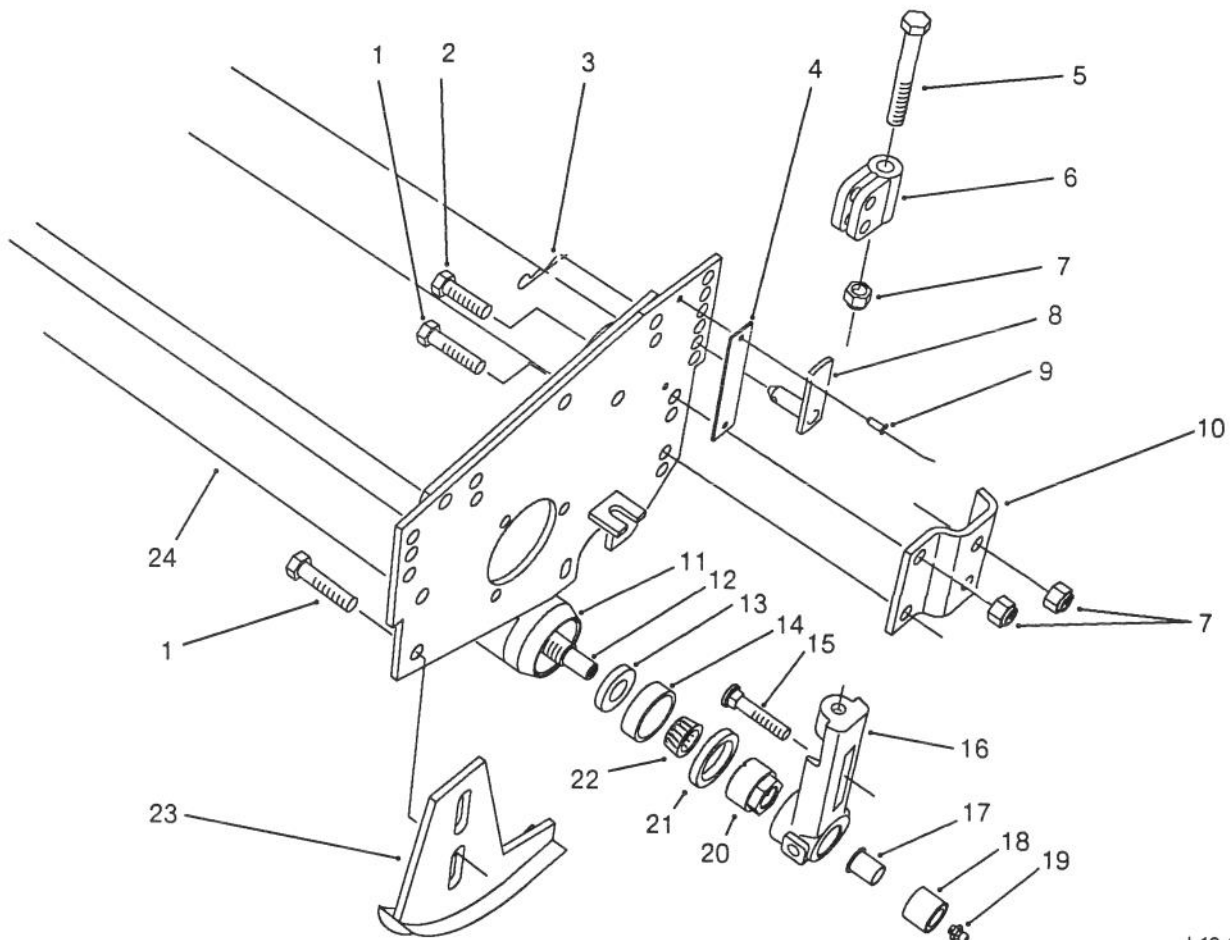
Ref. No.	Part No.	Description	No. Used
39	251-319	Flange - Bearing (Lube)	2
*	302-11	Fitting - Grease	2
40	251-320	Bearing	2
41	251-229	Flange - Bearing	2
42	3296-29	Nut - Lock	11
43	3217-6	Nut	1
44	61-0970	Housing - Bedbar Adj.	1
45	56-9510	Bushing Assy	2
46	56-9520	Bushing - Flanged	2
47	57-4910	Screw - Special	10
48	62-5180	Bedknife - 7 In. Reel	1
49	61-1210	Bedbar	1
50	61-1010	Bedbar Housing	1
51	57-5190	Screw - Adjustment	2
52	3218-18	Nut - Jam	2
53	61-1950	Washer - Bedbar	1
54	3256-56	Washer - Flat	1
55	3253-4	Washer - Lock	1
56	322-3	Screw - Cap Hex. Hd.	1

57	12-7079	Reel Assy. - 5 Blade (Left C.U.)	1
*	12-7059	Reel Assy. - 5 Blade (Right & Rear C.U.)	1
58	61-0660	Reel Frame	1
59	323-7	Screw - Cap Hex. Hd. (Use 4 screws on rear cutting unit)	2
60	3220-18	Nut - Jam	1
61	27-1850	Washer	1
62	61-1320	Sideplate - Reel	1
63	3296-45	Nut - Lock	1
64	302-18	Fitting - Grease	1
65	62-7120	Spacer	1
66	62-5070	Decal - Warning	1
67	3256-26	Washer - Flat (Use 2 washers on rear cutting unit)	1

NOTE: Front left cutting unit shown.

\*Not Illustrated





I. 12. 914. 26

## 5 BLADE CUTTING UNIT ROLLER ASSEMBLY

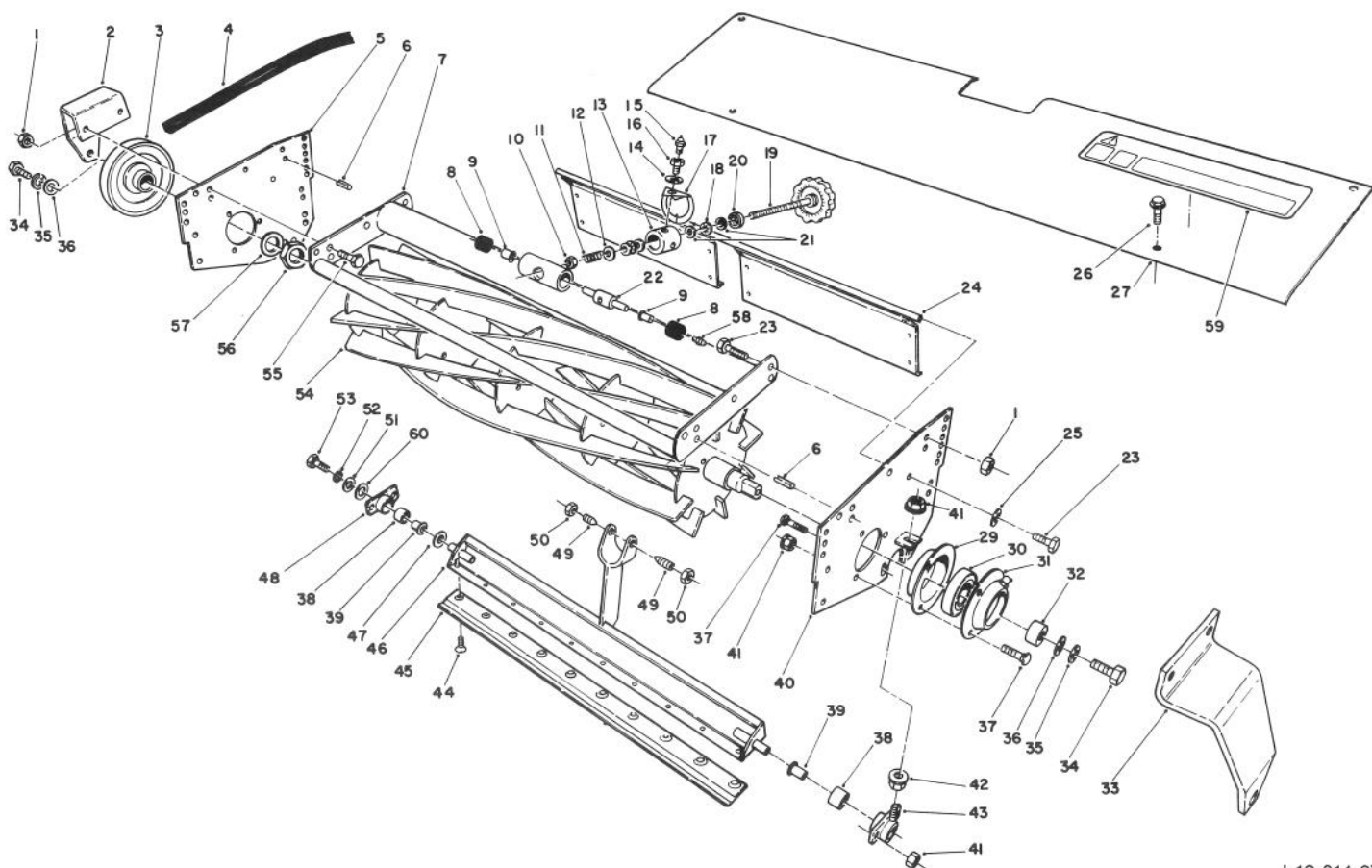
Ref. No.	Part No.	Description	No. Used
1	323-7	Screw - Cap Hex. Hd.	3
2	323-6	Screw - Cap Hex. Hd.	5
3	3290-467	Cotter - Hairpin	2
4	61-3810	Plate - HOC	2
5	61-0790	Screw - Cap Hex. Hd.	2
6	61-0420	Support - HOC	2
7	3296-39	Nut - Lock	9
8	61-0630	Pin - HOC	2
9	3290-55	Rivet - Pop	4
10	61-0910	Bracket - Angle	2
11	61-0380	Cap - Roller	2
12	61-0400	Shaft - Roller	1
13	253-116	Seal - Inner	2
14	254-79	Cup - Bearing	2

Ref. No.	Part No.	Description	No. Used
15	3231-2	Bolt - Carriage	2
16	61-0430	Bracket - Rear	2
17	56-9520	Bushing - Flanged	1
18	56-9510	Bushing Assy.	2
19	302-5	Fitting - Grease	2
20	61-0370	Nut - Adjustment	2
21	253-143	Seal - Outer	2
22	254-78	Cone - Bearing	2
23	61-0650	Skid	2
24	62-7100	Tube Assembly (Incl. Ref. #11)	1
*	61-0410	Roller Assembly (Incl. Ref. #11-14, 19-22 & 24)	1

NOTE: Front left cutting unit shown.

\*Not Illustrated





I. 12.914.27

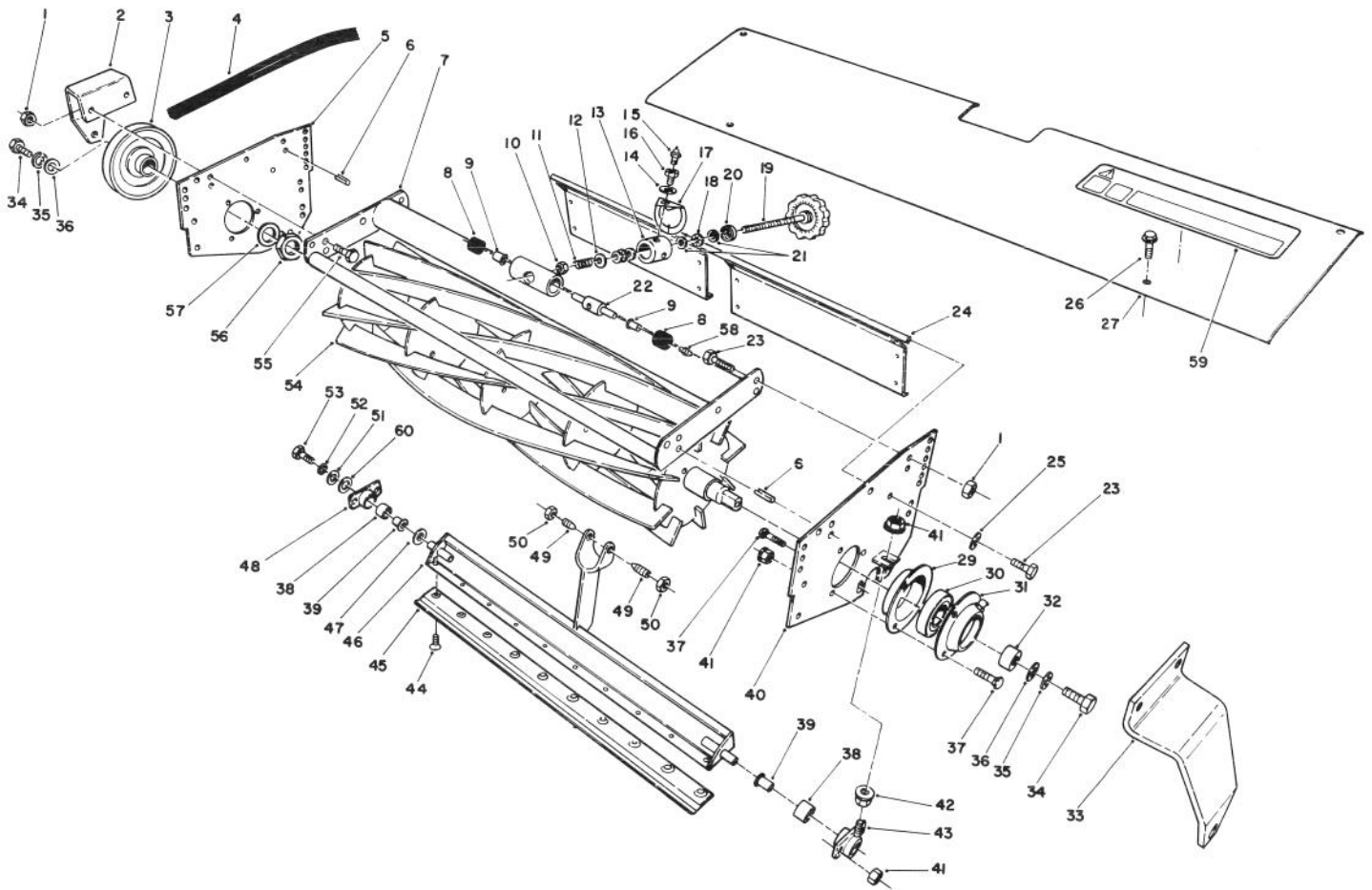
## 8 BLADE CUTTING UNIT REEL ASSEMBLY

Ref. No.	Part No.	Description	No. Used
1	3296-39	Nut - Lock	8
2	61-0900	Bracket - Tensioner/Carrier (Use 2 Brackets on Rear Cutting Unit)	1
3	61-0150	Pulley - Reel (8 Blade)	1
4	61-3380	V-Belt - Reel	1
5	61-1320	Sideplate	1
6	32121-36	Pin - Roll	4
7	61-0930	Frame - Reel	1
8	62-5510	Rubber Bushing Assembly	2
9	52-2890	Bushing - Flanged (Nylon)	2
10	3296-62	Nut - Lock	1
11	57-5270	Spring - Compression	1
12	29-8870	Washer	1
13	52-2980	Pivot - Single Point Adjust	1
14	3256-25	Washer - Flat	1
15	302-5	Fitting - Grease	1
16	52-2990	Capscrew - Spring Retainer	1
17	52-3000	Arm - Spring	1
18	257-6	Bearing - Thrust	2
19	61-1070	Handle - Assy.	1
20	253-84	Seal	1
21	257-5	Washer - Thrust	4

Ref. No.	Part No.	Description	No. Used
22	57-5260	Pin - S.P.A.	1
23	323-6	Screw - Cap Hex. Hd.	6
24	61-1130	Rear Grass Guard	1
25	3253-5	Washer - Lock	2
26	32144-10	Screw - Hex. Washer Hd.	4
27	61-0560	Shield - Top	1
29	251-229	Flange - Bearing	2
30	251-320	Bearing	2
31	251-319	Flange - Bearing (Lube)	2
*	302-11	Fitting - Grease	2
32	61-0500	Spacer - Reel	1
33	61-0890	Bracket - Carrier	1
34	3211-4	Screw - Cap Hex. Hd.	2
35	3253-21	Washer - Lock	2
36	5-0838	Washer	2
37	3230-20	Bolt - Carriage	10
38	56-9510	Bushing Assy.	2
39	56-9520	Bushing - Flanged	2
40	61-0940	Sideplate - Adjust	1
41	3296-29	Nut - Lock	11
42	3217-6	Nut	1
43	61-0970	Housing - Bedbar Adj.	1
44	57-4910	Screw - Special	10

NOTE: Front left cutting unit shown.

\*Not Illustrated



I. 12.914.27

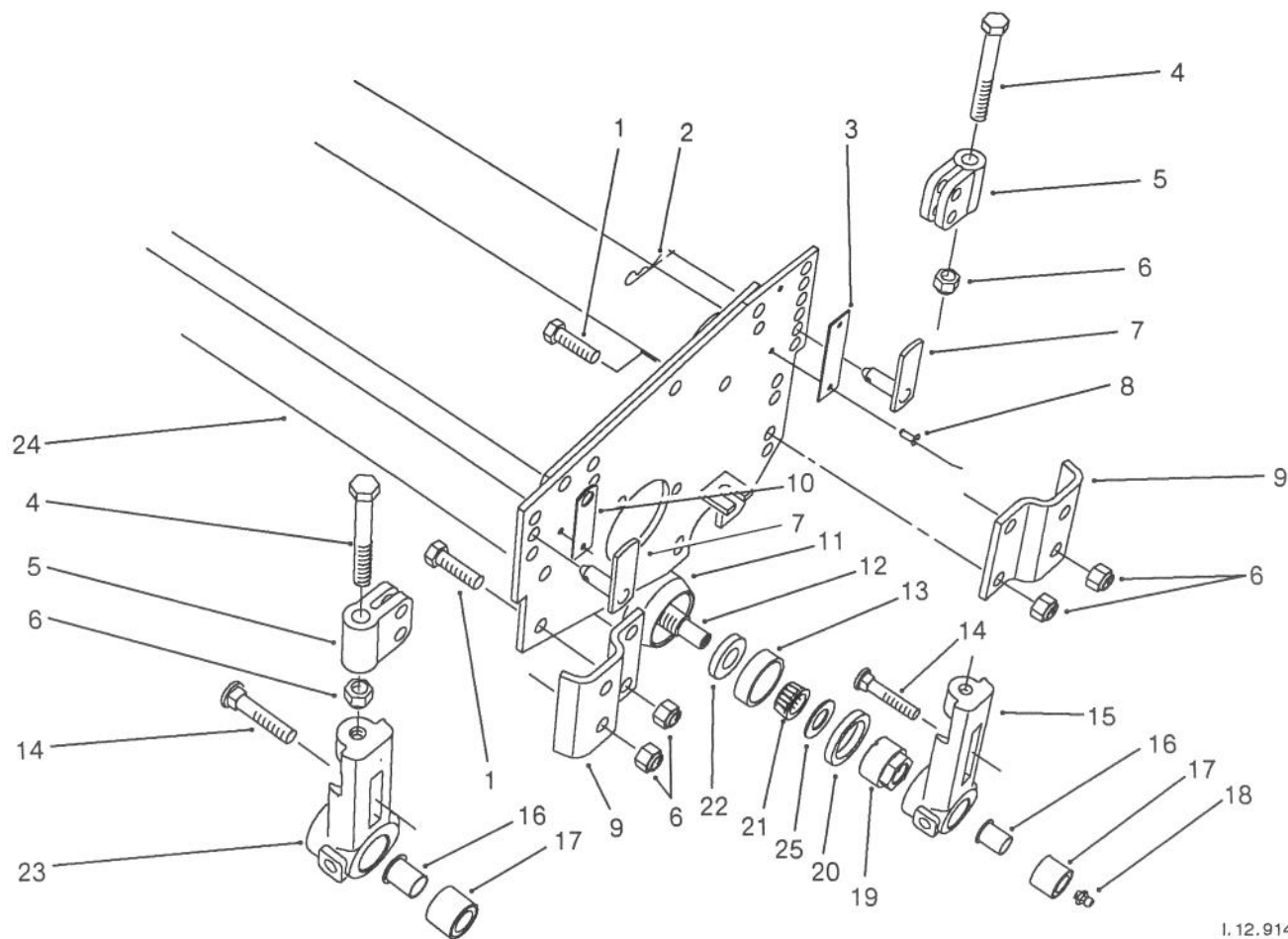
## 8 BLADE CUTTING UNIT REEL ASSEMBLY (Continued)

Ref. No.	Part No.	Description	No. Used
45	62-5180	Bedknife - 7 In. Reel	1
46	61-1210	Bedbar	1
47	61-1950	Washer - Bedbar	1
48	61-1010	Bedbar Housing	1
49	57-5190	Screw - Adjustment	2
50	3218-18	Nut - Jam	2
51	3256-56	Washer - Flat	1
52	3253-4	Washer - Lock	1
53	322-3	Screw - Cap Hex. Hd.	1

Ref. No.	Part No.	Description	No. Used
54	12-7099	Reel Assy. - 8 Blade (Left C.U.)	1
*	12-7089	Reel Assy. - 8 Blade (Right & Center C.U.)	1
55	323-7	Screw - Cap Hex. Hd.	4
56	3220-18	Nut - Jam	1
57	27-1850	Washer	1
58	302-18	Fitting - Grease	1
59	62-5070	Decal - Warning	1
60	62-7120	Spacer	1

NOTE: Front cutting unit shown.

\*Not Illustrated



I. 12.914.28A

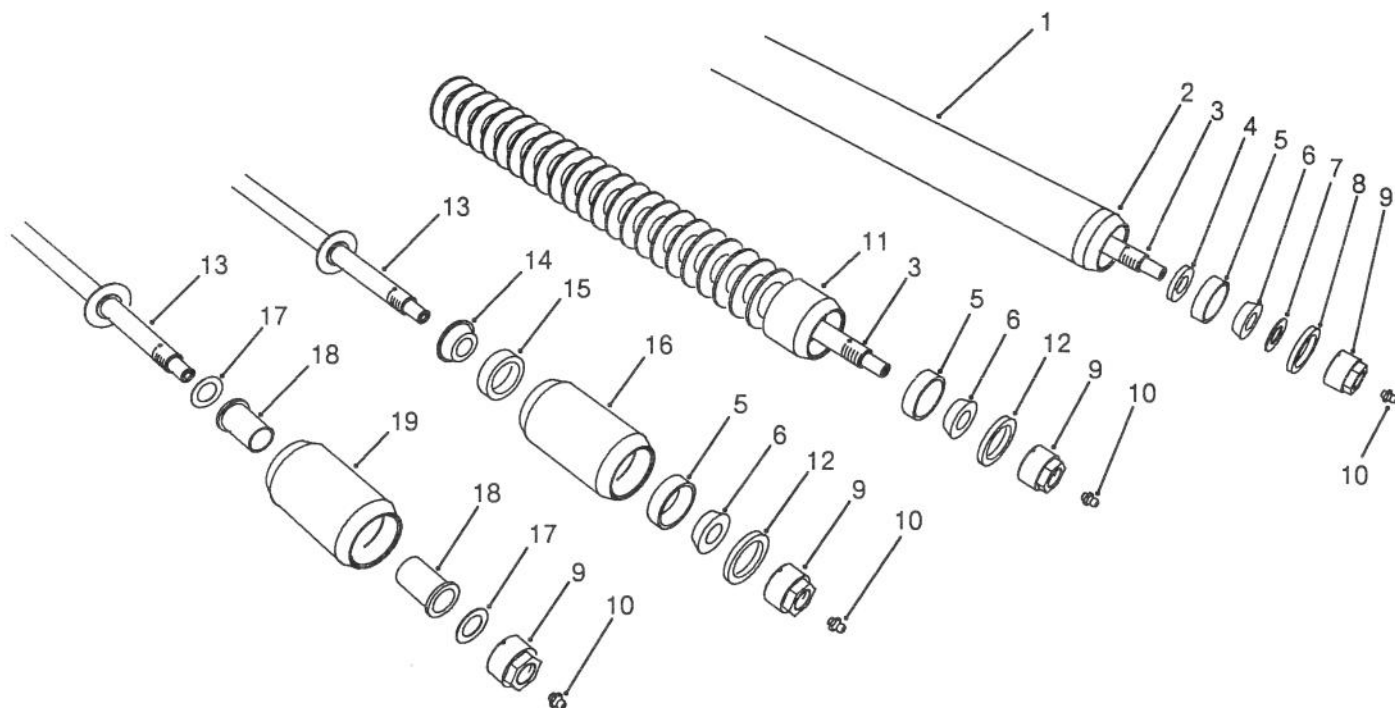
## 8 BLADE CUTTING UNIT ROLLER ASSEMBLY

Ref. No.	Part No.	Description	No. Used
1	323-6	Screw - Cap Hex. Hd.	8
2	3290-467	Cotter - Hairpin	4
3	61-3800	Plate - HOC Rear	2
4	61-0790	Screw - Cap Hex. Hd.	4
5	61-0420	Support - HOC	4
6	3296-39	Nut - Lock	16
7	61-0630	Pin - HOC	4
8	3290-55	Rivet - Pop	6
9	61-0910	Bracket - Angle	4
10	61-3790	Plate - HOC Front	2
11	61-0380	Cap - Roller	2
12	61-0400	Shaft - Roller	1
13	254-79	Cup - Bearing	2
14	3231-2	Bolt - Carriage	4
15	61-0430	Bracket - Rear	2

Ref. No.	Part No.	Description	No. Used
16	56-9520	Bushing - Flanged	2
17	56-9510	Bushing	4
18	302-5	Fitting - Grease	2
19	61-0370	Nut - Adjustment	2
20	253-143	Seal - Outer	2
21	254-78	Cone - Bearing	2
22	253-116	Seal - Inner	2
23	61-0440	Bracket - Front	2
24	62-7100	Tube Assembly (Incl. Ref. #11)	1
25	62-7660	Washer - Shim (not used on all full roller assemblies)	2
*	61-0410	Full Roller Assembly (Incl. Ref. #11-13, 18-22 & 24-25)	1

NOTE: Front left cutting unit shown.

\*Not Illustrated



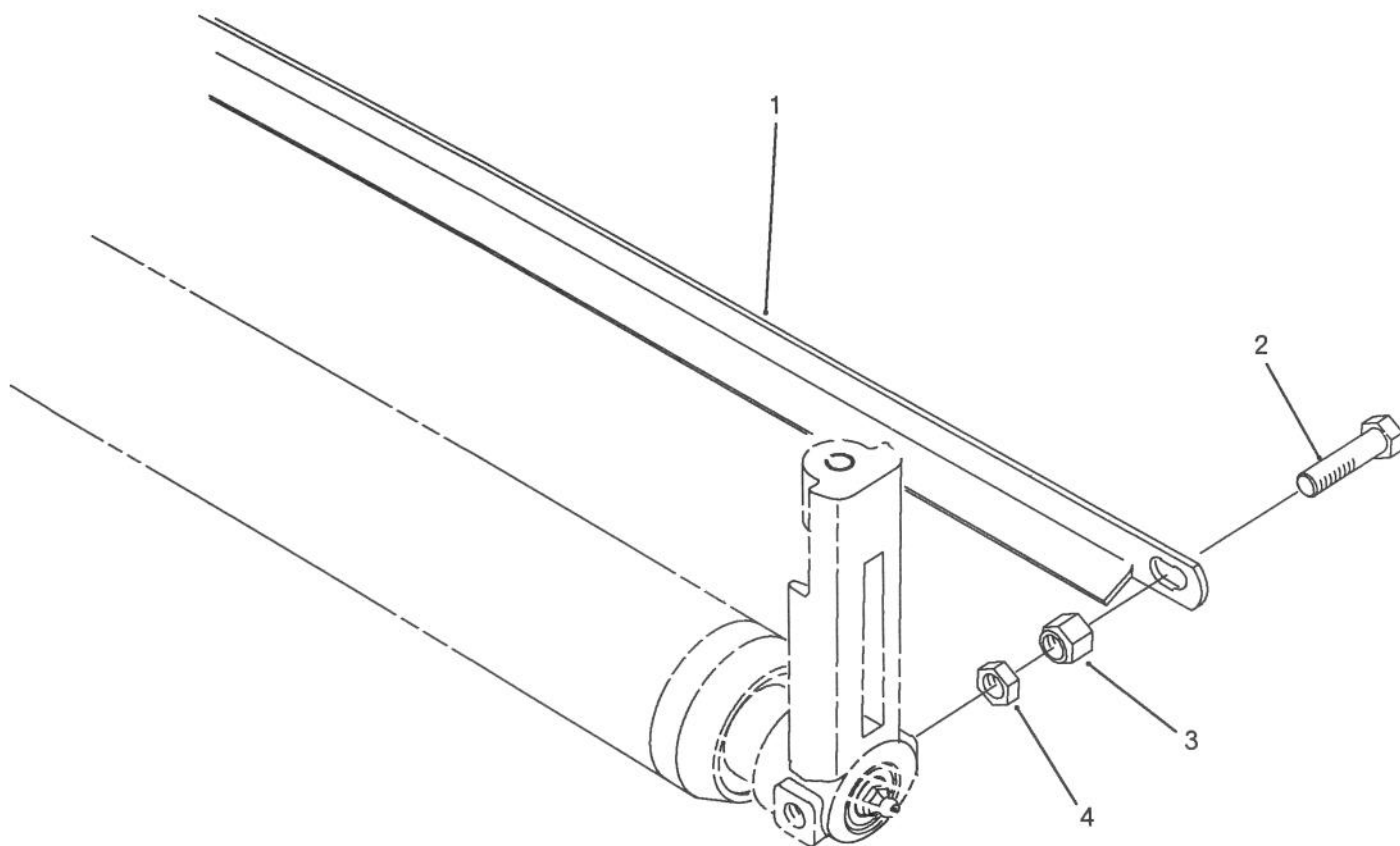
I. 12.914.30

## CUTTING UNIT ROLLER OPTIONS

Ref. No.	Part No.	Description	No. Used
1	62-7100	Full Roller Tube Assembly (Incl. Ref. #2)	1
2	61-0380	Cap - Full Roller	2
3	61-0400	Shaft - Full/Wiehle Roller	2
4	253-116	Seal - Inner	2
5	254-79	Cup - Bearing (Outer)	6
6	254-78	Cone - Bearing (Outer)	6
7	62-7660	Washer - Shim (not used on all full roller assemblies)	2
8	253-143	Seal - Outer	2
9	61-0370	Nut - Adjustment	8
10	302-5	Fitting - Grease	8
11	63-5160	Wiehle Roller Weld Assy.	1
12	253-146	Seal - Outer	4
13	62-4990	Shaft - Sectional Roller	2
14	252-107	Cone - Bearing (Inner)	2
15	252-106	Cup - Bearing (Inner)	2
16	62-4980	Roller - Sectional	2
17	3-6498	Washer - Thrust	4

Ref. No.	Part No.	Description	No. Used
18	256-117	Bushing - Flanged	4
19	63-5060	Roller - Anti-Scalp	2
*	61-0410	Full Roller Assy. (Incl. Ref. #1-10)	1
*	62-7410	Wiehle Roller Assy. (Incl. Ref. #3, 5-6 & 9-12)	1
*	62-4970	Sectional Roller Assy. (Incl. Ref. #5-6, 9-10 & 13-16)	1
*	63-5090	Anti-Scalp Roller Assy. (Incl. Ref. #9-10, 13 & 17-19)	1
*	03440	Full Roller Kit (Incl. 3 No. 61-0410)	1
*	03450	Wiehle Roller Kit (Incl. 3 No. 62-7410)	1
*	03445	Sectional Roller Kit (Incl. 3 No. 62-4970)	1
*	03447	Anti-Scalp Roller Kit (Incl. 3 No. 63-5090)	1

\*Not Illustrated

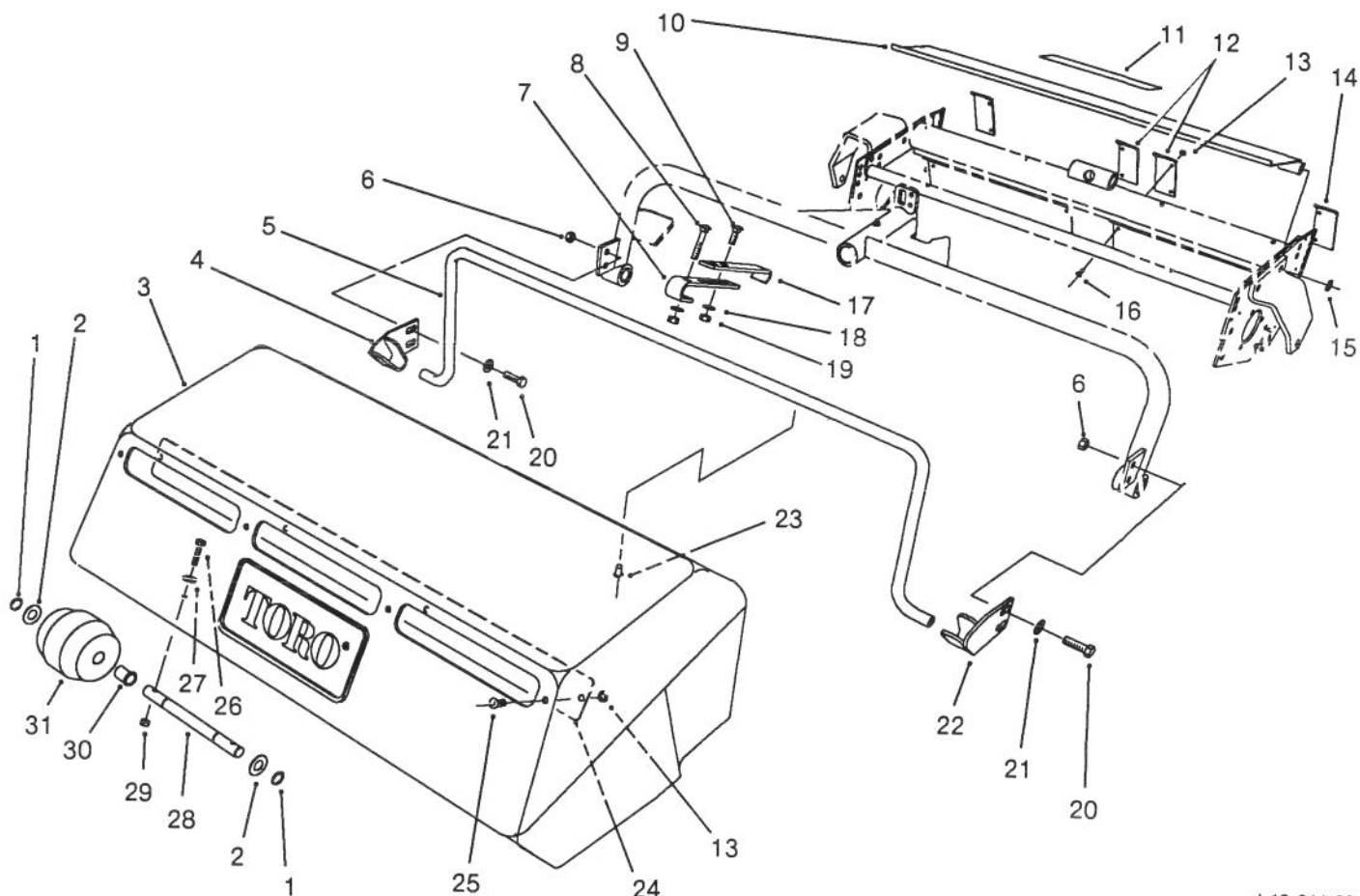


I. 12.914.31

## CUTTING UNIT ROLLER SCRAPER KIT PART NO. 60-9560 (Optional)

Ref. No.	Part No.	Description	No. Used
1	61-0590	Scraper - Roller	3
2	323-7	Screw - Cap Hex. Hd.	6

Ref. No.	Part No.	Description	No. Used
3	3296-59	Nut - Lock	6
4	3218-3	Nut - Jam	6



I. 12.914.32

## GRASS COLLECTION SYSTEM MODEL NO. 03433 (Optional) (FRONT CUTTING UNIT BASKET ASSEMBLY)

Ref. No.	Part No.	Description	No. Used
1	32120-64	Ring - Snap	8
2	3-9274	Spacer - Wheel	8
3	61-0210	Basket - Grass (Front)	2
4	61-1280	Bracket - Basket R.H.	2
5	61-1190	Support - Basket (Front)	2
6	3296-39	Nut - Lock	8
7	61-3160	Hanger - Basket (Front)	2
8	3230-5	Bolt - Carriage	2
9	3230-2	Bolt - Carriage	4
10	61-0750	Deflector - Grass	2
11	62-5070	Decal - Warning	2
12	61-3290	Cover - Middle	4
13	3256-49	Washer - Flat	32
14	61-3280	Cover - End	4
15	3253-21	Washer - Lock	4
16	3269-23	Rivet - Pop	24
17	62-7230	Hanger - Adjustable (Front)	2

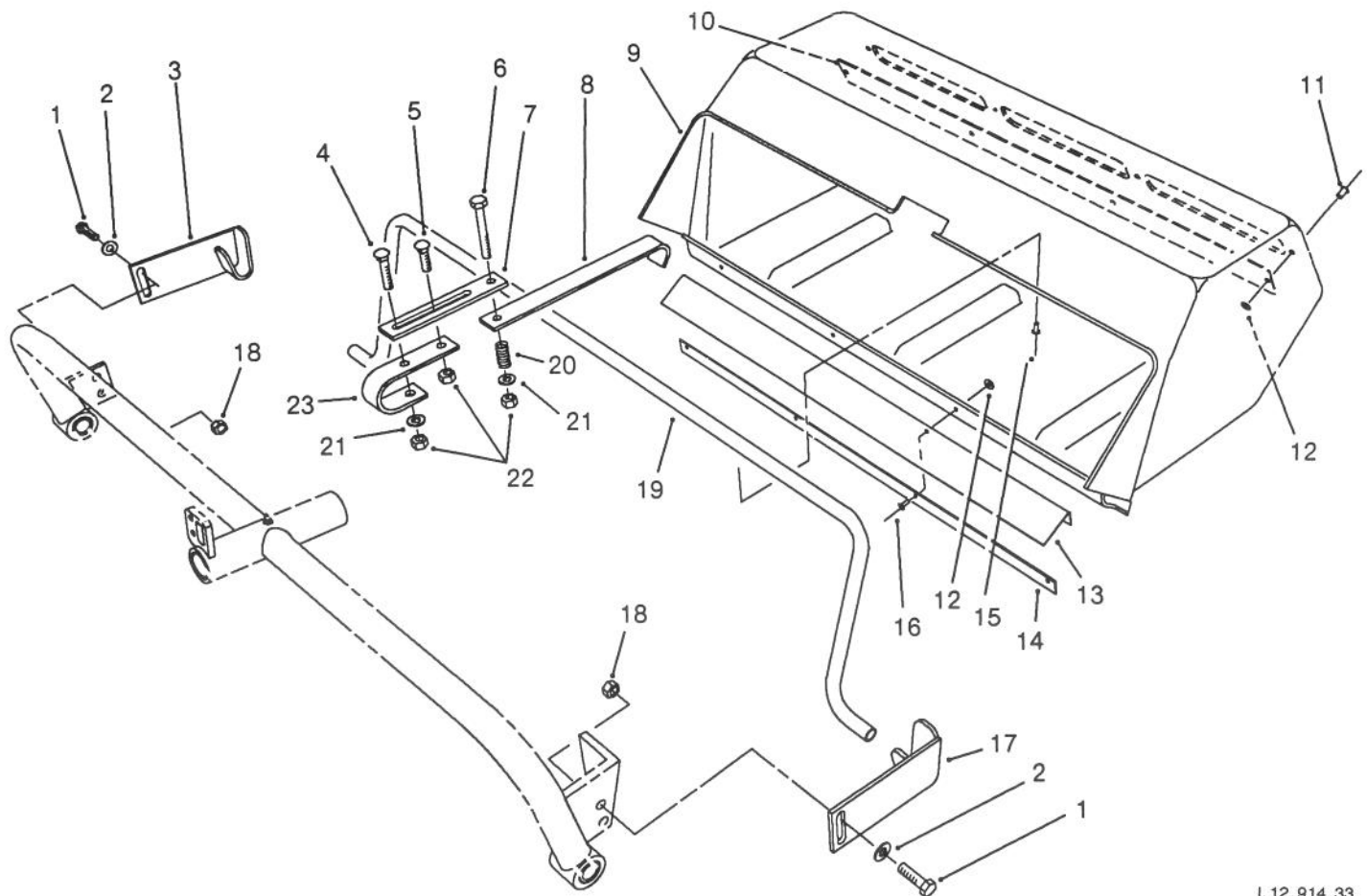
Ref. No.	Part No.	Description	No. Used
18	3256-23	Washer - Flat	6
19	3296-29	Nut - Lock	6
20	323-7	Screw - Cap Hex. Hd.	8
21	3256-24	Washer - Flat	8
22	61-1270	Bracket - Basket L.H.	2
23	3269-18	Rivet - Pop	20
24	61-3170	Baffle - Grass	2
25	3269-22	Rivet - Pop	8
26	321-8	Screw - Cap Hex. Hd.	8
27	3256-2	Washer - Flat	8
28	5-2891	Shaft - Wheel	4
29	32153-4	Nut - Lock	8
30	256-90	Bushing - Flange	8
31	4-7439	Wheel Assembly (Incl. Ref. #30)	4
*	61-1330	Front Grass Basket Assy. (Complete)	2

NOTE: Left Front Cutting Unit Shown.

NOTE: Model No. 03433 Includes 2 Front and 1 Rear Basket Assemblies.

\*Not Illustrated





I. 12.914.33

## GRASS COLLECTION SYSTEM MODEL 03433 (Opt.) (Cont.) (REAR CUTTING UNIT BASKET ASSEMBLY)

Ref. No.	Part No.	Description	No. Used
1	323-7	Screw - Cap Hex. Hd.	4
2	3256-24	Washer - Flat	4
3	61-1260	Bracket - Basket R.H.	1
4	3230-8	Bolt - Carriage	1
5	3230-2	Bolt - Carriage	1
6	322-7	Screw - Cap Hex. Hd.	1
7	62-7490	Plate - Hanger	1
8	62-7500	Hanger - Basket (Rear)	1
9	61-0220	Basket - Grass (Rear)	1
10	61-3170	Baffle - Grass	1
11	3269-22	Rivet - Pop	4
12	3256-49	Washer - Flat	8
13	62-5130	Flap - Rubber	1

Ref. No.	Part No.	Description	No. Used
14	63-8740	Strap - Basket	1
15	3269-18	Rivet - Pop	10
16	3290-282	Rivet - Pop	4
17	61-1250	Bracket - Basket L.H.	1
18	3296-39	Nut - Lock	4
19	61-1290	Support - Basket (Rear)	1
20	63-4220	Spring - Compression	1
21	3256-23	Washer - Flat	2
22	3296-29	Nut - Lock	3
23	62-7480	Bracket - Hanger	1
*	61-1340	Rear Grass Basket Assy. (Complete)	1

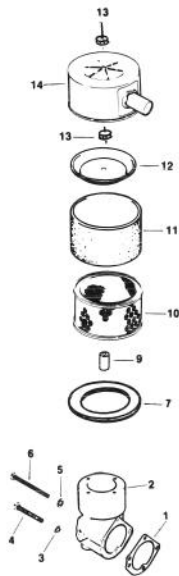
Note: Model No. 03433 Includes 2 Front and 1 Rear Basket Assemblies.

\*Not Illustrated

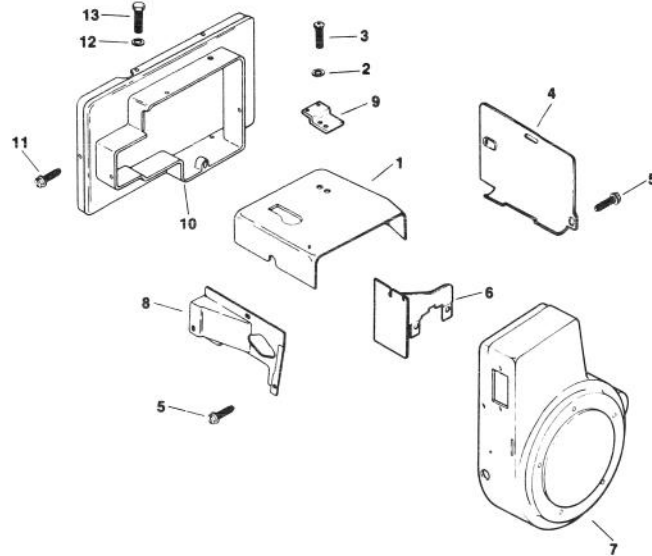


# ENGINE KOHLER MODEL NO. M16 SPEC. NO. 711526

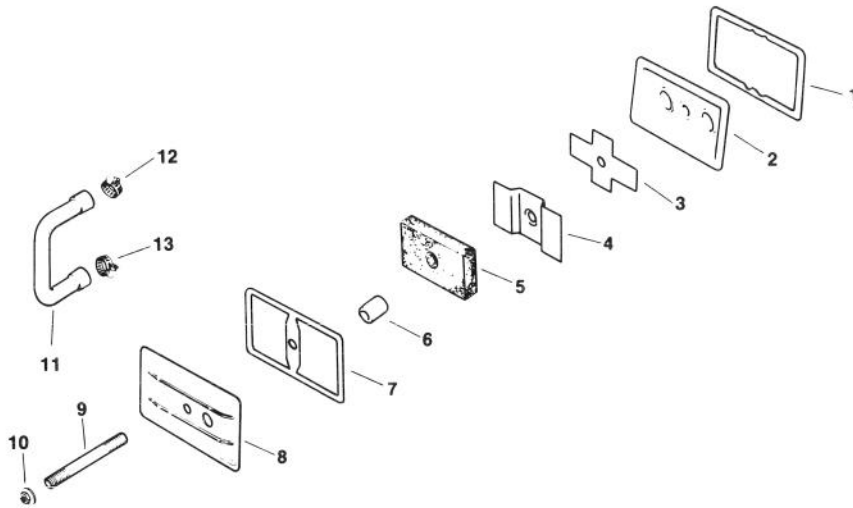
Group 1



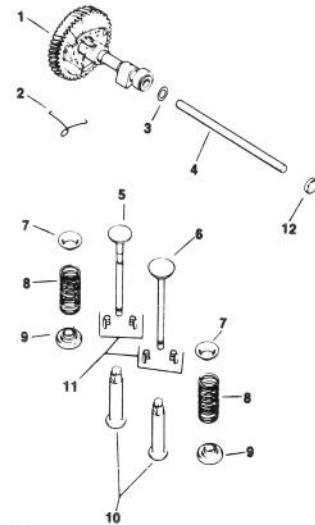
Group 2



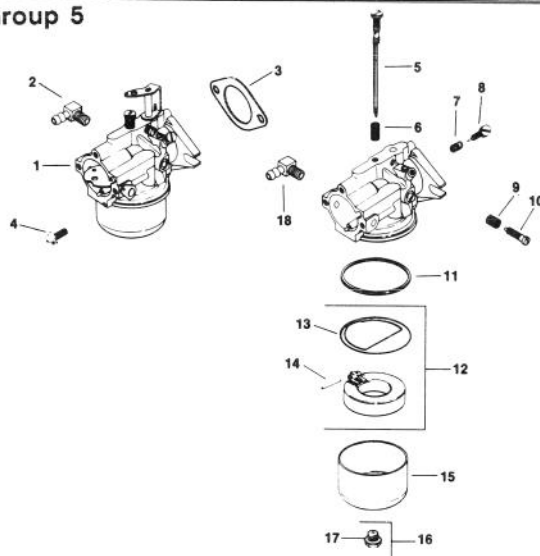
Group 3



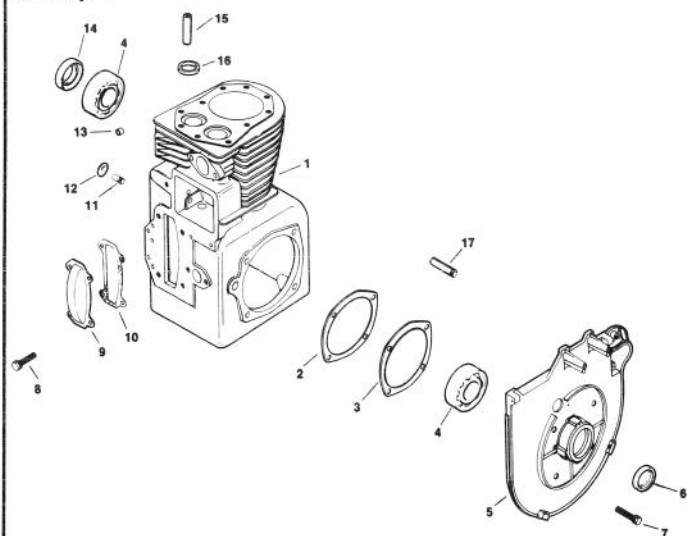
Group 4



Group 5



Group 7



# ENGINE KOHLER MODEL NO. M16 SPEC. NO. 711526

Ref. No.	Part No.	Description	No. Used
<b>AIR INTAKE - Group 1</b>			
1	277069	Gasket - Air Cleaner Elb.	1
2	52 054 26	Elbow - Air Cleaner	1
3	X-22-9	Washer - ITLW	2
4	X-50-57	Screw - Pan Hd.	2
5	X-25-79	Washer - Plain	1
6	X-50-37	Screw - Pan Hd.	1
7	47 041 11	Gasket - Base	1
9	231032	Seal	1
10	45 083 02	Element	1
11	45 083 01	Precleaner	1
12	52 082 04	Cover - Cleaner Element	1
†13		Nut - Lock	2
14	52 096 26	Cover - Air Cleaner	1
*	25 113 07	Decal - Air Cleaner	1
<b>BAFFLES &amp; SHROUD</b>			
<b>Group 2</b>			
1	45 063 08	Baffle - Head	1
2	X-25-53	Washer - Plain	1
3	47 086 08	Screw - Pozidrive T.H.	1
4	47 063 10	Baffle - Cylinder	1
5	52 086 11	Screw - Hex. Washer Hd.	8
6	47 063 07	Baffle - Inner	1
7	47 027 42	Housing - Blower	1
8	47 063 06	Baffle - Side Air	1
9	47 126 23	Bracket - Air Duct	1
10	47 755 33	Kit - Air Duct	1
11	X-67-64	Screw - Hex. Washer Hd.	3
12	X-25-20	Washer - Plain	1
13	X-154-4	Screw - Cap Hex. Hd.	1
<b>BREATHER &amp; VENT</b>			
<b>Group 3</b>			
1	235048	Gasket - Breather Plate	1
2	235631	Plate - Breather	1
3	235047	Reed - Breather	1
4	235117	Baffle - Breather	1
5	235118	Filter - Breather	1
6	231032	Seal - Breather	1
7	275144	Gasket - Valve Cover	1
8	275839	Cover - Valve	1
9	275220	Stud	1
10	X-799-1	Palnut	1
11	47 326 02	Hose	1
12	X-426-3	Clamp - Hose (Large)	1
13	X-426-9	Clamp - Hose (Small)	1

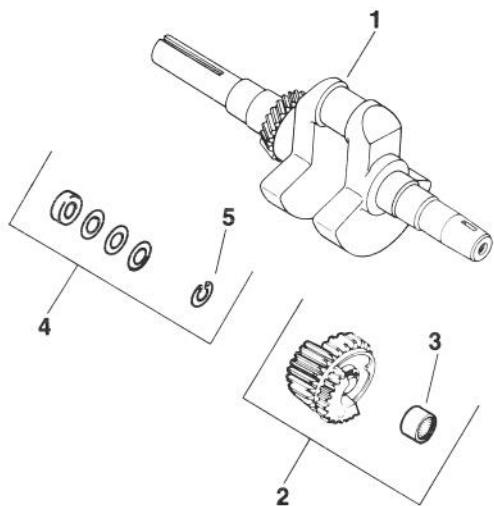
Ref. No.	Part No.	Description	No. Used
<b>CAMSHAFT &amp; VALVES</b>			
<b>Group 4</b>			
1	47 010 11	Camshaft Assembly	1
2	47 089 01	Spring - Actuating	1
3	275066	Spacer (.005)	1
*	275067	Spacer (.010)	1
4	47 380 09	Pin - Camshaft	1
5	237672	Valve - Exhaust	1
6	235582	Valve - Intake	1
7	235011	Retainer - Upper Spring	2
8	235168	Spring - Valve	2
9	52 413 01	Rotator	2
10	D-235327	Tappet	2
11	41 755 10	Kit - Retainer	2
12	X-702-3	Plug - Cup	1
<b>CARBURETOR - Group 5</b>			
1	45 053 76	Carburetor Assembly (Incl. Ref. #5-18)	1
2	25 155 02	Connector - 90° Hose	1
3	47 049 01	Gasket - Carburetor	1
4	X-770-1	Screw - Slt'd. Hd.	2
5	45 103 01	Needle - Main	1
6	200383	Spring - Main	1
7	200380	Spring - Idle Fuel	1
8	275231	Needle - Idle Fuel	1
9	232555	Spring - Idle Speed	1
10	232556	Screw - Idle Speed	1
11	200375	Gasket - Bowl	1
12	25 757 03	Kit - Float	1
13	25 041 02	Gasket - Bowl Baffle	1
14	200376	Pin - Float Hinge	1
15	235448	Bowl - Fuel	1
16	47 100 06	Screw - Bowl Retainer	1
17	200372	Gasket - Bowl Ret. Screw	1
18	X-391-10	Connector	1
*	25 757 02	Kit - Carburetor Repair	1
*	25 757 05	Kit - Throttle/Choke Repair	1
<b>CRANKCASE - Group 7</b>			
1	45 782 14	Miniblock (Incl. Ref. #13, 15-16)	1
2	47 422 05	Gasket - Shim	A/R
3	47 041 09	Gasket - Bearing Plate	1
4	235376	Bearing - Ball	2
5	47 146 07	Plate - Bearing	1
6	47 032 06	Seal - Front Oil	1
7	X-159-2	Screw - Cap Hex. Hd.	4
8	X-132-6	Screw - Cap Hex. Hd.	4
9	235026	Cover - Camshaft	1
10	235025	Gasket - Camshaft Cover	1
11	235125-S	Shaft - Governor	1
12	X-230-11	Plug - Expansion	1
13	234866	Bearing Gov. Cross Shaft	1
14	47 032 07	Seal - Rear Oil	1
15	230265	Insert - Intake Valve	1
16	235007-S	Guide - Valve	2
17	236559	Shaft - Balance Gear Stub	2
*	45 755 12	Gasket Set W/Seals	1
*	45 004 06	Gasket Set W/O Seals	1

\*Not Illustrated

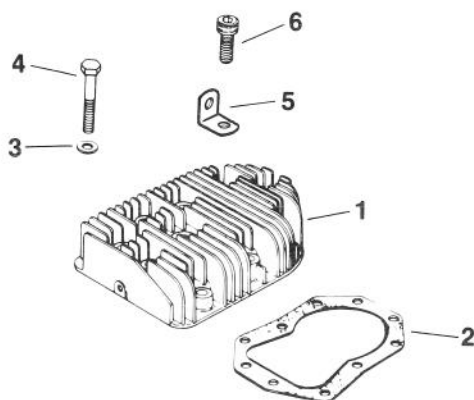
†NOTE: Obtain replacement parts from The Toro Co. (See page 7 Of Parts Catalog)

# ENGINE KOHLER MODEL NO. M16 SPEC. NO. 711526 (Cont.)

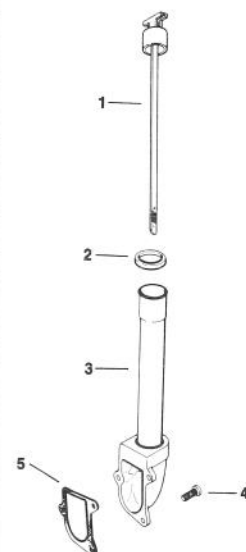
Group 8



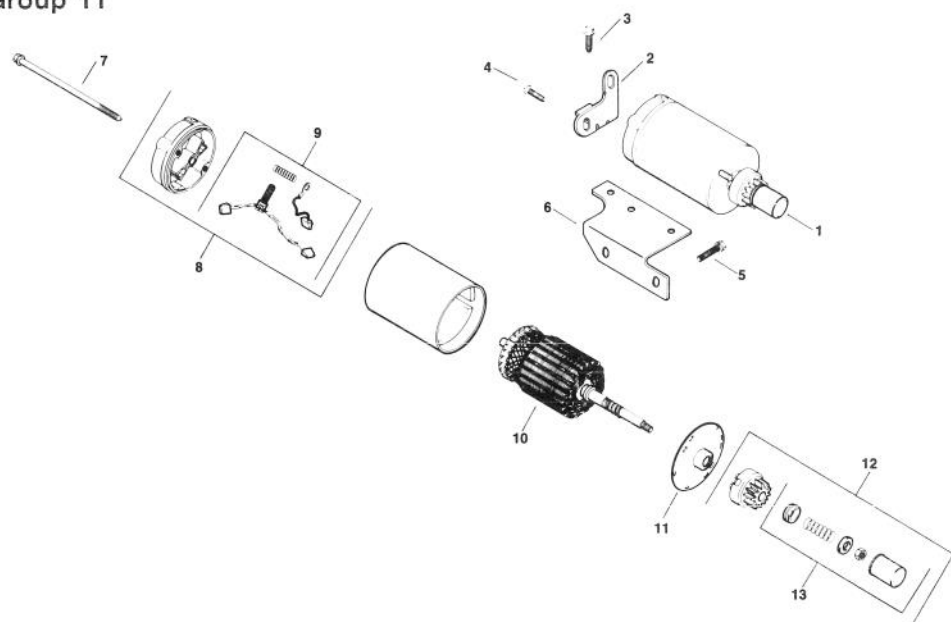
Group 9



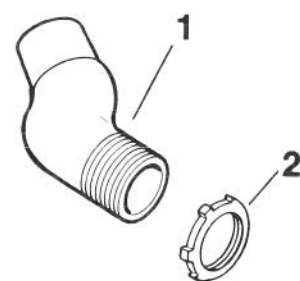
Group 10



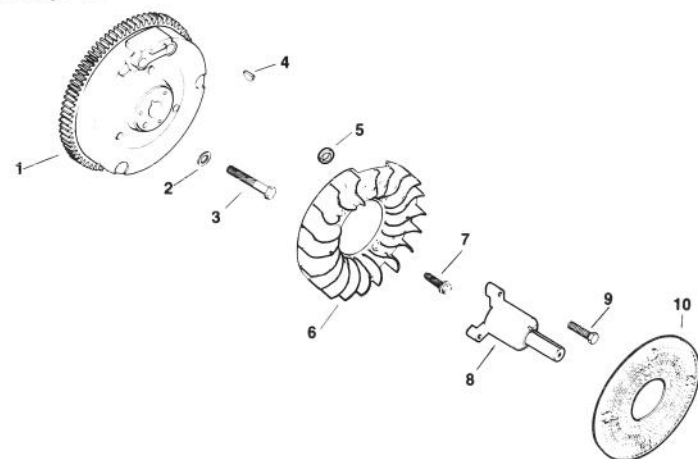
Group 11



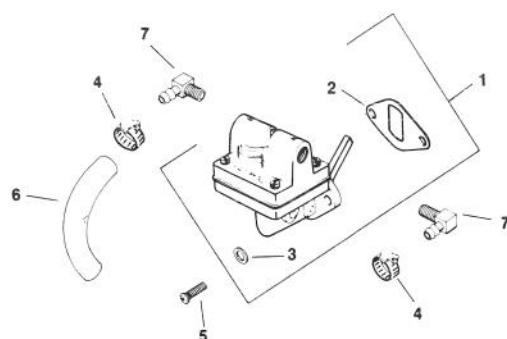
Group 12



Group 13



Group 14



# ENGINE KOHLER MODEL NO. M16 SPEC. NO. 711526 (Cont.)

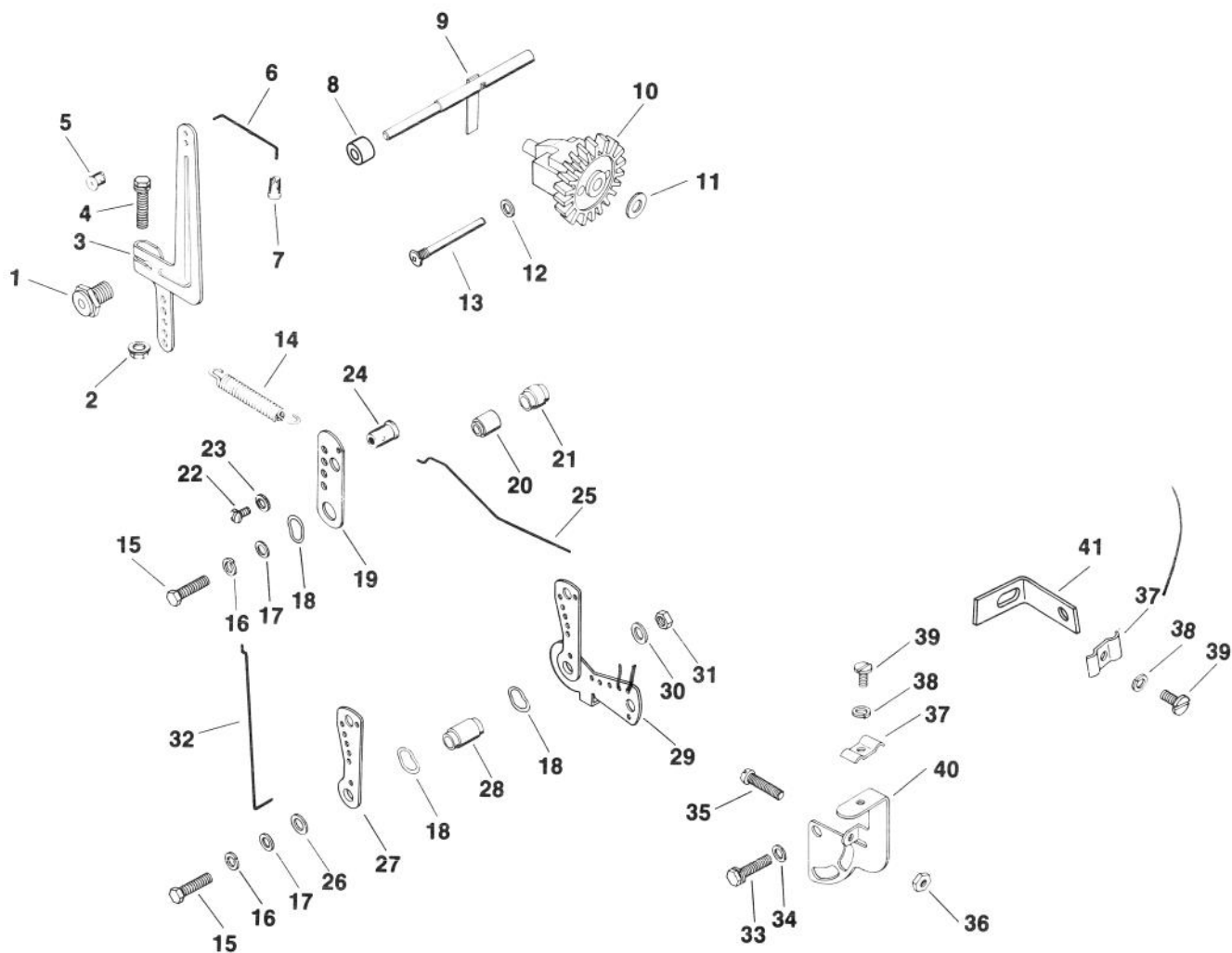
Ref. No.	Part No.	Description	No. Used
		<b>CRANKSHAFT - Group 8</b>	
1	45 014 83	Kit - Crankshaft (Includes Flywheel Hardware)	1
2	45 043 03	Gear Assembly	2
3	47 030 01	Bearing - Needle	2
4	47 755 01	Kit - Spacer	1
5	X-269-34	Retainer	2
		<b>CYLINDER HEAD Group 9</b>	
1	45 015 09	Head - Cylinder	1
2	45 041 16	Gasket - Head	1
3	270889	Washer - Plain	10
4	270158	Screw - Cap Hex. Hd.	9
5	47 445 02	Strap - Lifting	1
6	47 086 17	Screw - Hex. Socket Hd.	1
		<b>DIPSTICK - Group 10</b>	
1	47 038 27	Dipstick	1
2	41 153 01	O-Ring	1
3	47 029 06	Adapter - Oil Fill	1
4	X-131-2	Screw - Flat Hd.	3
5	237064	Gasket - Adapter	1
		<b>ELECTRIC STARTER Group 11</b>	
1	41 098 04	Starter Assembly (Incl. Ref. #7-13)	1
2	45 126 17	Brace - Tail	1
3	X-67-83	Screw - Hex. Washer Hd.	1
4	X-67-62	Screw - Hex. Washer Hd.	1
5	X-159-2	Screw - Cap Hex. Hd.	2
6	47 126 29	Bracket - Solenoid	1
7	41 086 19	Bolt - Thru	2
8	41 227 04	Cap - Commutator End	1
9	52 755 15	Kit - Brush	1
10	45 170 02	Armature	1
11	41 227 03	Cap - Drive End	1
12	47 755 07	Kit - Drive	1
13	47 755 13	Kit - Drive Parts	1
*	25 450 03	Tag - Caution	1

Ref. No.	Part No.	Description	No. Used
		<b>EXHAUST - Group 12</b>	
1	45 054 04	Elbow - Exhaust	1
2	45 100 01	Nut - Lock	1
		<b>FLYWHEEL - Group 13</b>	
1	47 025 53	Flywheel	1
2	52 114 02	Washer - Plain	1
3	25 086 24	Screw - Hex. Hd. Machine	1
4	X-46-3	Key - Woodruff	1
5	25 112 04	Spacer	1
6	25 157 01	Fan	1
7	25 086 21	Screw - Hex. Washer Hd.	4
8	235954	Shaft - Front Drive	1
9	X-159-2	Screw - Cap Hex. Hd.	4
10	25 162 03	Screen - Grass	1
		<b>FUEL PUMP - Group 14</b>	
1	47 559 04	Fuel Pump Assembly	1
2	25 041 05	Gasket - Fuel Pump	1
3	X-25-63	Washer - Plain	2
4	X-426-9	Clamp - Hose	2
5	X-174-2	Screw - Pozidrive F.H.	2
6	25 353 01	Line - Fuel	1
7	25 155 02	Connector - 90° Hose Out.	2

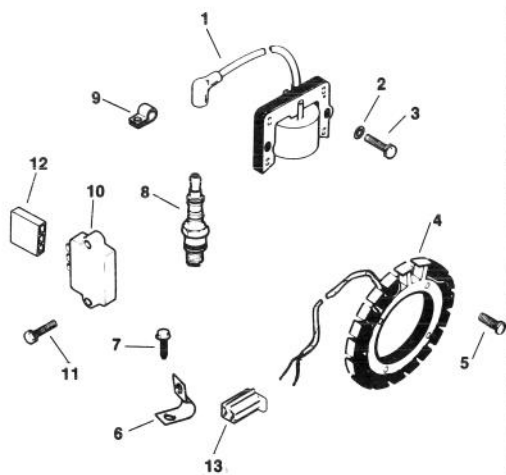
\*Not Illustrated

# ENGINE KOHLER MODEL NO. M16 SPEC. NO. 711526 (Cont.)

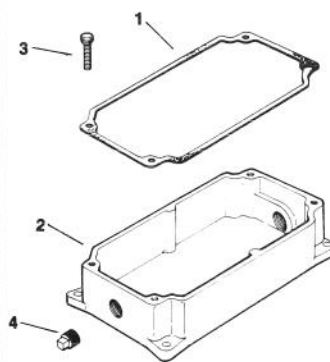
Group 17



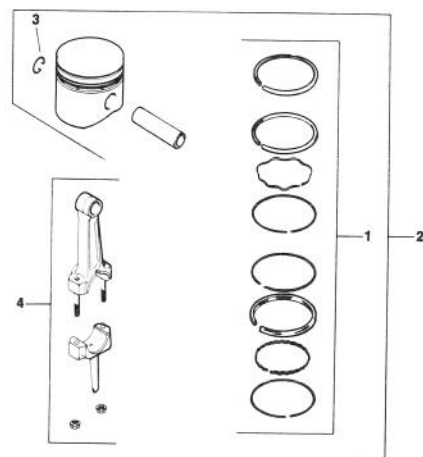
Group 18



Group 21



Group 22



# ENGINE KOHLER MODEL NO. M16 SPEC. NO. 711526 (Cont.)

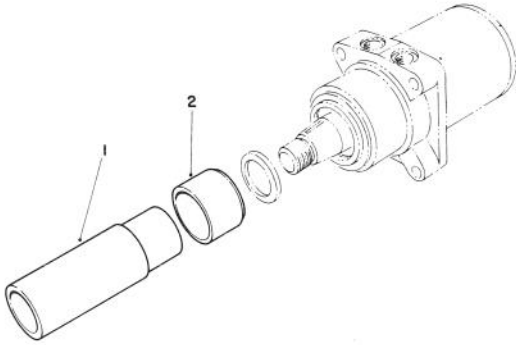
Ref. No.	Part No.	Description	No. Used
		<b>GOVERNOR - Group 17</b>	
1	235476	Bushing - Governor Shaft	1
2	X-799-1	Palnut	1
3	47 090 20	Lever - Governor	1
4	X-776-1	Screw	1
5	47 158 04	Bushing - Linkage (White)	1
6	47 079 05	Linkage - Governor	1
7	25 158 07	Bushing - Linkage (Yellow)	1
8	X-400-80	Spacer	1
9	A-235256-S	Kit - Governor Shaft	1
10	A-235743-S	Kit - Governor Gear	1
11	237022	Washer - Thrust	1
12	25 468 01	Washer - Plain	1
13	231355	Pin - Governor Stop	1
14	235496	Spring - Governor	1
15	X-5-26	Screw - Hex. Hd.	2
16	X-20-1	Washer - Lock	2
17	X-25-63	Washer - Plain	2
18	275690	Washer - Wave	3
19	235086	Bracket - Speed Control	1
20	235085	Spacer	1
21	X-384-2	Spacer	1
22	X-51-8	Screw Pan Hd.	1
23	X-25-102	Washer - Plain	1
24	48 755 10	Kit - Clamp	1
25	47 079 08	Linkage - Throttle	1
26	X-25-82	Washer - Plain	1
27	47-090-05	Lever - Choke Control	1
28	47-112-19	Spacer	1
29	47 090 09	Lever - Throttle Control	1
30	X-25-95	Washer - Plain	1
31	X-81-1	Nut - Hex.	1
32	47 079 01	Linkage - Choke	1
33	X-132-1	Screw - Hex. Hd.	1
34	X-25-72	Washer - Plain	1
35	232556	Screw	1
36	X-72-4	Nut - Hex.	1
37	235778	Clamp - Cable	1
38	X-19-1	Washer - Lock	1
39	X-15-5	Screw - Flat Hd.	1
40	47 126 13	Bracket - Choke	1
41	47 126 36	Bracket - Choke	1

Ref. No.	Part No.	Description	No. Used
		<b>IGNITION - Group 18</b>	
1	47 584 01	Module - Ignition (Before Serial No. 1715900013)	1
*	47 584 02	Module - Ignition (After Serial No. 1715900003)	1
2	X-25-79	Washer - Plain	2
3	X-156-1	Screw - Cap Hex. Hd.	2
4	237878	Kit - Stator	1
5	X-778-1	Screw - Pozidrive Pan Hd.	4
6	X-728-1	Clip - Lead	1
7	X-67-59	Screw - Hex. Washer Hd.	1
8	235041-S	Spark Plug	1
9	210181	Clip - Hi-Tension Lead	1
10	41 403 05	Rectifier - Regulator	1
11	X-132-4	Screw - Cap Hex. Hd.	2
12	236602	Connector - Female	1
13	41 155 03	Connector - Male	1
*	47 518 45	Lead - Module-Connector (White W/Diode)	1
*	47 518 46	Lead - Reg.-Connector (Violet)	1
*	47 518 43	Lead - Service (White W/Diode)	1
		<b>OIL PAN - Group 21</b>	
1	235057	Gasket - Pan	1
2	47 199 10	Pan - Oil	1
3	X-159-3	Screw - Cap Hex. Hd.	4
4	X-75-6	Plug - Square Hd.	2
		<b>PISTON &amp; ROD Group 22</b>	
1	45 108 06	Ring Set - Std & .003	1
*	45 108 07	Ring Set - .010	1
*	45 108 08	Ring Set - .020	1
*	45 108 09	Ring Set - .030	1
2	45 874 01	Piston W/Ring Set - Std.	1
*	45 874 02	Piston W/Ring Set - .003	1
*	45 874 03	Piston W/Ring Set - .010	1
*	45 874 04	Piston W/Ring Set - .020	1
*	45 874 05	Piston W/Ring Set - .030	1
3	47 018 01	Retainer - Piston Pin	2
4	45 067 22	Connecting Rod - Std.	1
*	45 067 23	Connecting Rod - .010	1

\*Not Illustrated

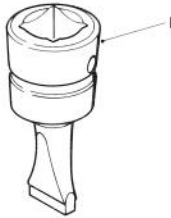
# SPECIAL TOOLS

## DRIVE MOTOR SEAL INSTALLATION TOOL NO. 19-2660



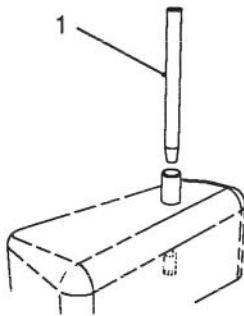
Ref. No.	Part No.	Description	No. Used
1		Driver – Seal	1
2		Holder – Seal	1

## BEDKNIFE SCREW TOOL NO. 51-0880



Ref. No.	Part No.	Description	No. Used
1		Tool – Bedknife Screw	1

## HYDRAULIC OIL RESERVOIR PLUG NO. 63-4310



Ref. No.	Part No.	Description	No. Used
1		Plug – Hydraulic Oil Reservoir	1



# INDEX

Description	Page	Description	Page
Hood Assembly . . . . .	1-2	Cutting Unit Lift Control Valve Assembly . . . . .	21
Frame and Steering Assembly . . . . .	3	Control Valve No. 43-1950 . . . . .	22
Fuel Tank Assembly . . . . .	4	Seat Assembly Model No. 30756 (Optional) . . . . .	23
Instrument Panel Assembly . . . . .	5	Cutting Unit Carrier Frame Assembly . . . . .	24-25
Electrical Schematic . . . . .	6	5 Blade Cutting Unit Reel Assembly . . . . .	26-27
Engine & Clutch Assembly . . . . .	7	5 Blade Cutting Unit Roller Assembly . . . . .	28
Electric Clutch Assembly No. 61-0050 . . . . .	8	8 Blade Cutting Unit Reel Assembly . . . . .	29-30
Hydraulic Schematic . . . . .	9	8 Blade Cutting Unit Roller Assembly . . . . .	31
Hydraulic Tank & Battery Assembly . . . . .	10	Cutting Unit Roller Options . . . . .	32
Hydraulic Oil Cooler Assembly . . . . .	11	Cutting Unit Roller Scraper Kit Part No. 60-9590 (Optional) . . . . .	33
Hydraulic Drive Assembly . . . . .	12	Grass Collection System Model No. 03433 (Opt.) (Front Cutting Unit Basket Assembly) . . . . .	34
Hydraulic Pump Assembly No. 61-0080 . . . . .	13	Grass Collection System Model No. 03433 (Opt.) (Rear Cutting Unit Basket Assembly) . . . . .	35
Traction Controls Assembly . . . . .	14	Engine Kohler Model No. M16 Spec. No. 711526 . . . . .	36-41
Front Wheel Assembly . . . . .	15	Special Tools . . . . .	42
Hydraulic Drive Motor No. 66-5290 . . . . .	16		
Brake Assembly . . . . .	17		
Jackshaft Assembly . . . . .	18		
Cutting Unit Lift Assembly . . . . .	19		
Hydraulic Cylinder No. 61-0090 . . . . .	20		

## MAINTENANCE RECORD

[illegible]

## MAINTENANCE RECORD

[illegible]