



## Insight™ Gold Lawn Mower

Model No. 10697 - 250000001 and up.

### Parts Catalog

---

#### Ordering Replacement Parts

To order replacement parts, please supply the part number, the quantity, and the description of each part desired.

#### Understanding Reference Numbers

Each Identified part in an illustration has a reference number. The reference number for a part also appears in the parts list, along with other information about the part.

This catalog uses two special reference number formats, one to indicate parts in a service assembly and another to indicate the quantity of a given part in an illustration.

#### Service Assembly Reference Numbers

Parts in service assemblies have reference numbers in the form a:b. The a represents the reference number of the entire service assembly and the b represents a sequential number unique to each part within the service assembly.

For example, a wheel assembly might be identified by reference number 6, the tire by 6:1, the valve by 6:2, and the wheel by 6:3. When you order the assembly identified by reference number 6, you receive all parts identified by reference numbers 6:1, 6:2, and 6:3. However, you may also order any part individually. Reference numbers of this type appear in illustrations and in part lists.

#### Reference Numbers Indicating Quantity

In an illustration, if a reference number indicates more than one part, the reference number has the form nX y. The n represents the quantity of the part, the X is the multiplication symbol, and the y represents the reference number.

For example, in an illustration, the reference number 2X 37 means that two of the parts identified by reference number 37 are indicated.

# Contents

Description	Page	Description	Page
Front End and Tunnel Assembly	..... 3	Crankshaft Assembly Honda GCV160A NBL1	..... 17
Housing and Deck Assembly No. 108-9347	..... 4	Piston and Connecting Rod Assembly Honda GCV160A NBL1	..... 18
Side Discharge Assembly	..... 5	Camshaft Pulley Assembly Honda GCV160A NBL1	..... 19
Rear Axle and Transmission Assembly	..... 6	Recoil Starter Assembly Honda GCV160A NBL1	..... 20
Transmission Assembly No. 107-3860	..... 7	Fan Cover Assembly Honda GCV160A NBL1	..... 21
Upper Handle Assembly	..... 8	Carburetor Assembly Honda GCV160A NBL1	..... 22
Lower Handle Assembly	..... 9	Air Cleaner Assembly Honda GCV160A NBL1	..... 23
Blade and Engine Assembly	..... 10	Muffler Assembly Honda GCV160A NBL1	..... 24
Clip Assembly	..... 11	Flywheel Assembly Honda GCV160A NBL1	..... 25
Brake Assembly	..... 12	Control Assembly Honda GCV160A NBL1	..... 26
Upper Blade Brake Handle Assembly	..... 13	Top Cover Assembly Honda GCV160A NBL1	..... 27
Rear Bag Assembly	..... 14	Label Assembly Honda GCV160A NBL1	..... 28
Cylinder Barrel Assembly Honda GCV160A NBL1	..... 15	Attachments and Accessories List	..... 29
Oil Pan Assembly Honda GCV160A NBL1	..... 16		

## Part Description Abbreviations

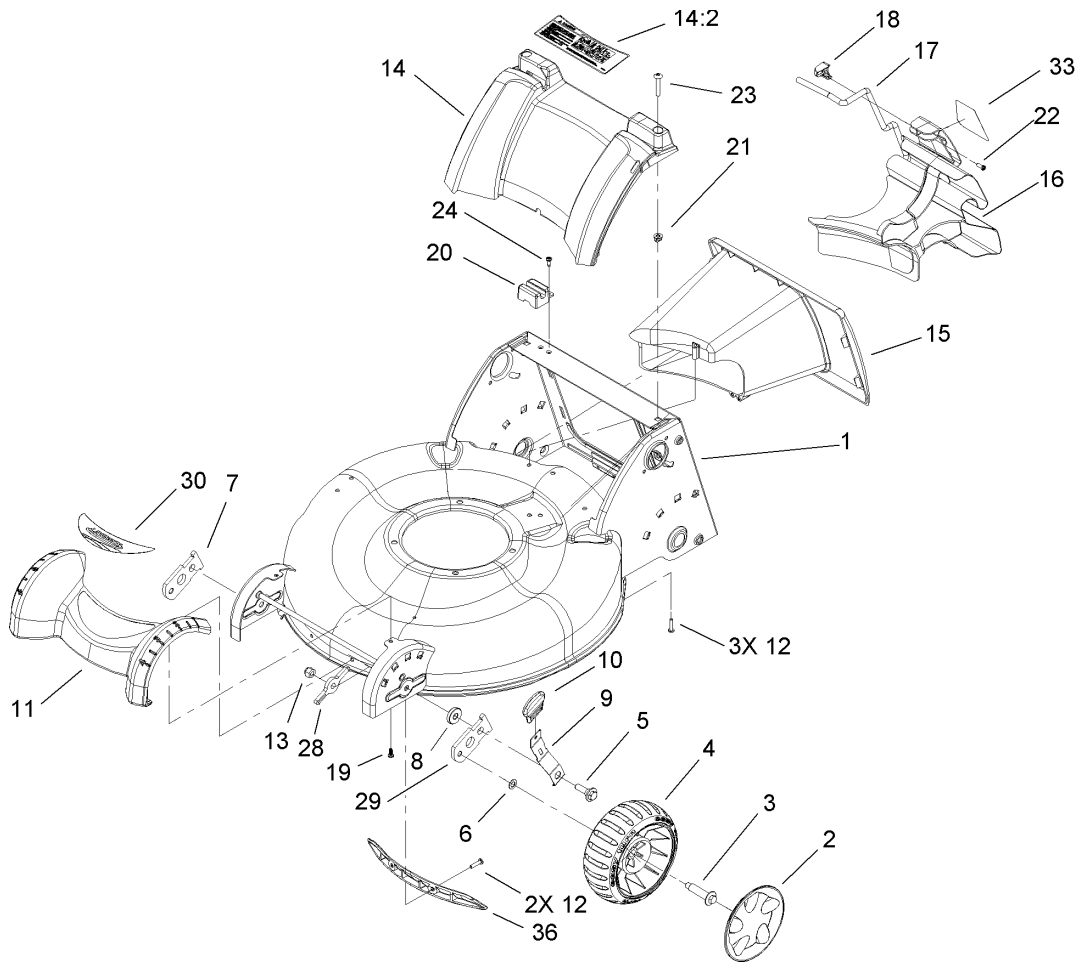
Part descriptions in this catalog may include the following abbreviations.

AR. .... as required	HWHTF. .... hex washer head thread forming
ASM. .... assembly	HYD. .... hydraulic
BBC. .... blade brake clutch	INC. .... incorporated
CARR. .... carriage	LH. .... left hand
DEG. .... degrees	NI. .... nylon insert
EXT. .... external	NPTF. .... national pipe thread fine
FH. .... flat head	PPH. .... phillips pan head
GA. .... gauge	PPHTF. .... phillips pan head thread forming
HF. .... hex flange	PRH. .... phillips round head
HH. .... hex head	PTH. .... phillips truss head
HHF. .... hex head flange	PTO. .... power take off
HHFTF. .... hex head flange thread forming	RH. .... right hand
HJ. .... hex jam	ROPS. .... roll over protection system
HLH. .... hex lag head	SFH. .... slotted fillister head
HOC. .... height-of-cut	SHH. .... slotted hex head
HSBH. .... hex socket button head	SHWH. .... slotted hex washer head
HSFH. .... hex socket flat head	SPH. .... slotted pan head
HSH. .... hex socket head	SQH. .... square head
HWH. .... hex washer head	

## Footnotes

- ❶ Not illustrated
- ❷ Obtain from your local Honda dealer

- ❸ Not serviced separately

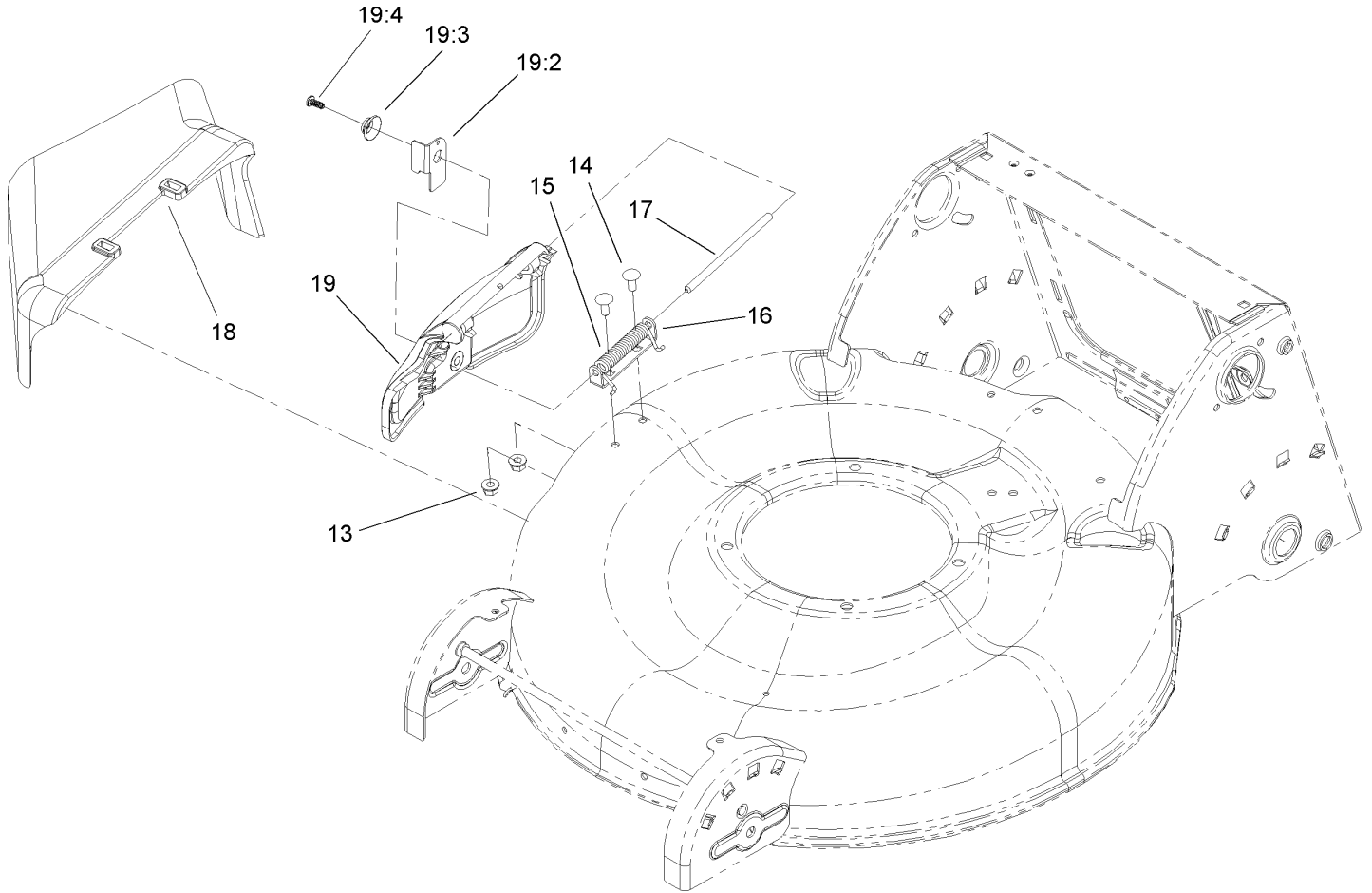


## Front End and Tunnel Assembly

Ref	Part No.	Qty.	Description
1	108-9347	1	Housing ASM
2	107-3886	2	Cover-Wheel, 7In
3	614650	2	Bolt-Shoulder
4	107-3891	2	7In Wheel ASM
5	614672	2	Bolt-Shoulder
6	40-1940	2	Washer
7	107-3877	1	Arm-Pivot, RH
8	92-4890	2	Washer
9	107-3878	2	Arm-Spring
10	107-1904	2	Knob-Lever, HOC
11	107-3926	1	Cover-Front
12	108-7476	5	Screw-Plastite
13	3296-39	2	Nut-Lock, NI
14	108-9349	1	Cover-Rear
14:2	107-3888	1	Decal-Safety
15	107-3905	1	Tunnel
16	107-3907	1	Plug-Chute
17	108-1038	1	Latch-Plug
18	108-0956	1	Retainer-Latch
19	108-7475	2	Screw-Plastite
20	108-9301	1	Module-Switch
21	94-1610	2	Nut-Clip
22	32144-111	1	Screw-PPH
23	108-0965	2	Screw-PTH

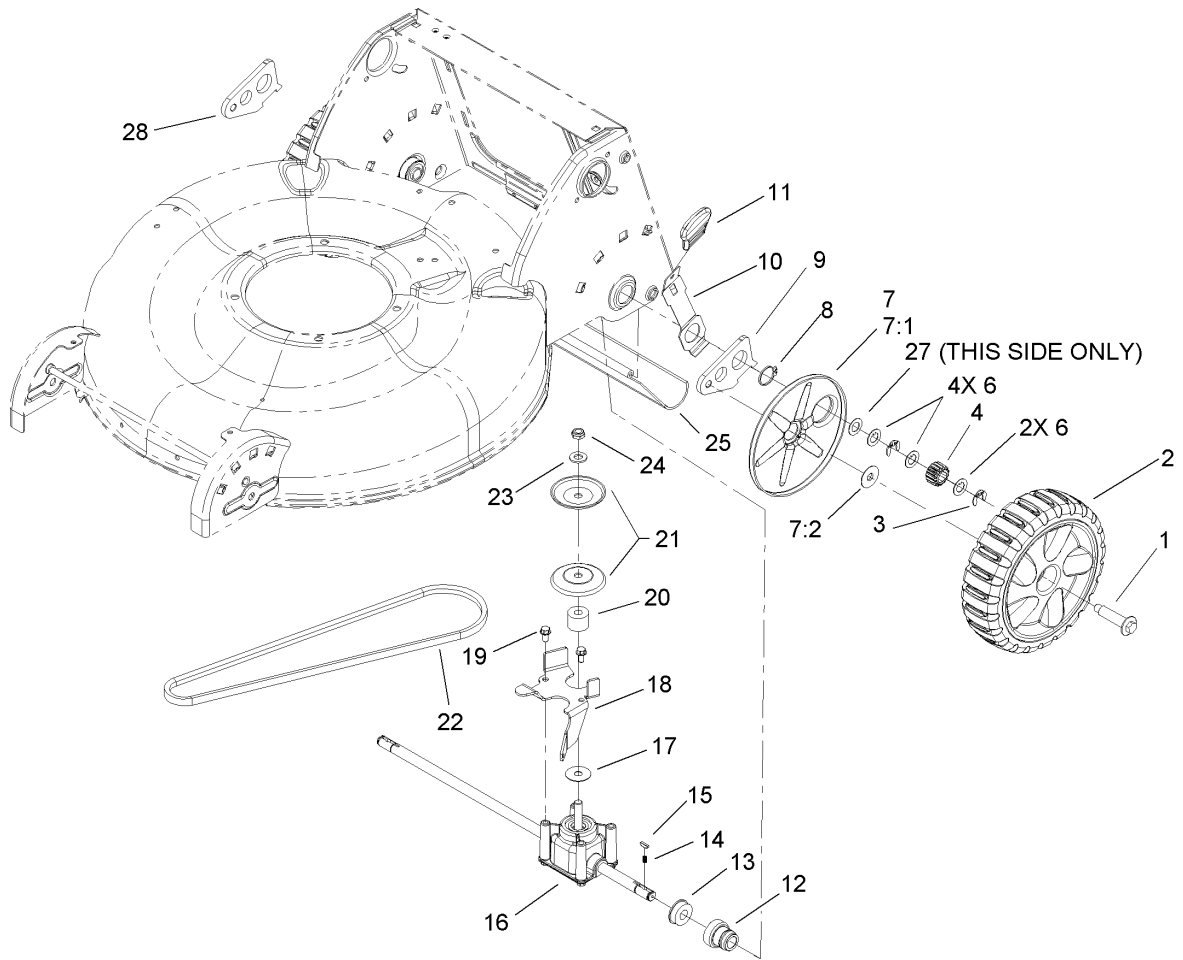
Ref	Part No.	Qty.	Description
24	105-6849	2	Screw-Thread Forming
28	108-1048	2	Washer-Support, Front
29	108-1044	1	Arm-Pivot, LH
30	108-7453	1	Decal
33	108-7461	1	Decal
36	108-7502	1	Insert-Housing
39	110-1751	1	Mulch Plug ASM





## Side Discharge Assembly

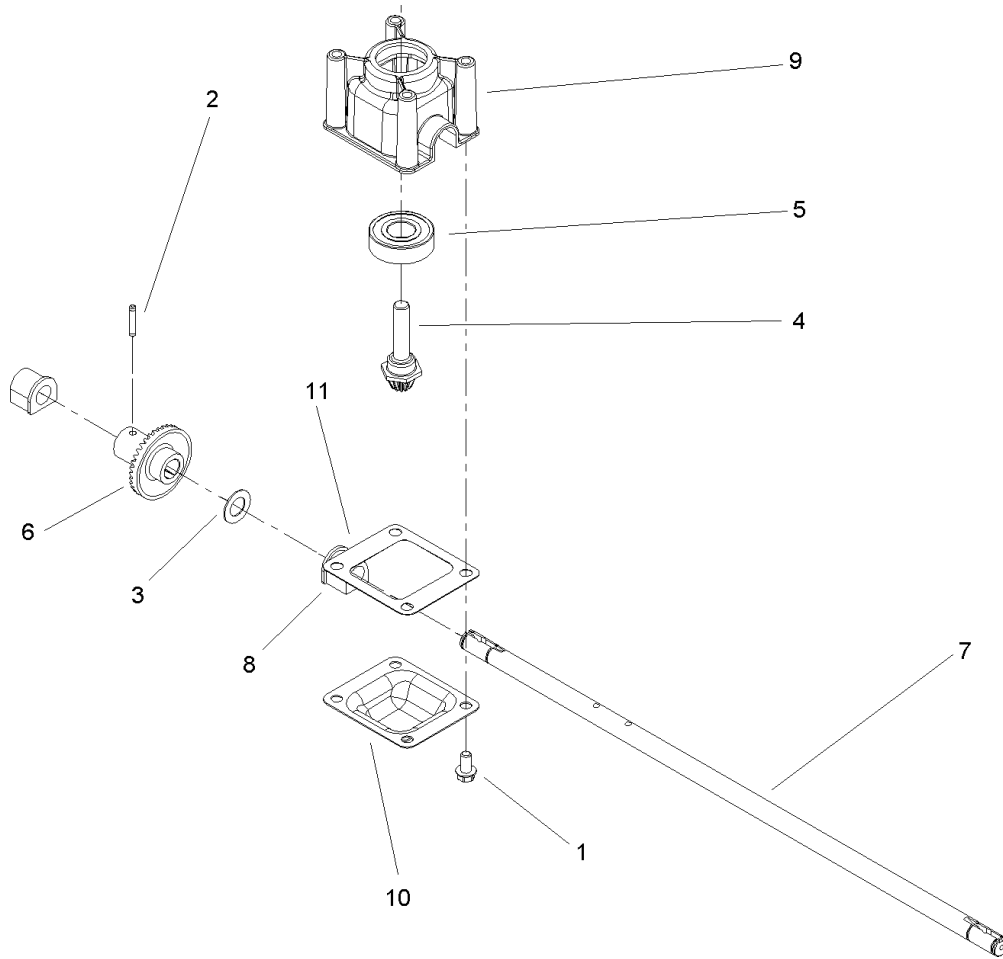
Ref	Part No.	Qty.	Description
13	32128-32	2	Nut-HHF
14	3229-11	2	Screw-CARR
15	99-5293	1	Spring-Torsion
16	99-5292	1	Bracket-Cover
17	99-5291	1	Rod-Cover
18	105-3028	1	Chute-Discharge, Side
19	106-8376	1	Discharge Door ASM
19:2	107-0795	1	Latch-Door
19:3	107-7456	1	Cap-Door
19:4	107-7461	1	Screw-Plastite

## Rear Axle and Transmission Assembly

Ref	Part No.	Qty.	Description
1	614650	2	Bolt-Shoulder
2	107-3906	2	Rear Wheel ASM
3	65-2720	4	Klipring-Locking
4	105-3040	2	Gear-Pinion, 15T
6	105-6840	6	Washer-Thrust
7		2	Wheel Cover ASM
7:1	107-1919	1	Cover-Wheel
7:2	614426	1	Washer-Stepped
8	32151-36	2	Ring-Retaining
9	108-9344	1	Arm-Rear Pivot, LH
10	107-3880	2	Arm-Spring, Rear
11	107-1904	2	Knob-Lever, HOC
12	104-8698	2	Retainer-Bearing, HOC
13	104-8699	2	Bearing-Ball
14	39-9650	2	Spring-Compression
15	612066	2	Key
16	107-3860	1	Transmission ASM
17	105-6814	1	Washer-Shield
18	107-3884-03	1	Bracket-Transmission
19	32144-4	2	Screw-HWH
20	92-5791	1	Spacer
21	100-1176	2	Pulley-Half
22	91-2258	1	V-Belt
23	3256-24	1	Washer-Flat

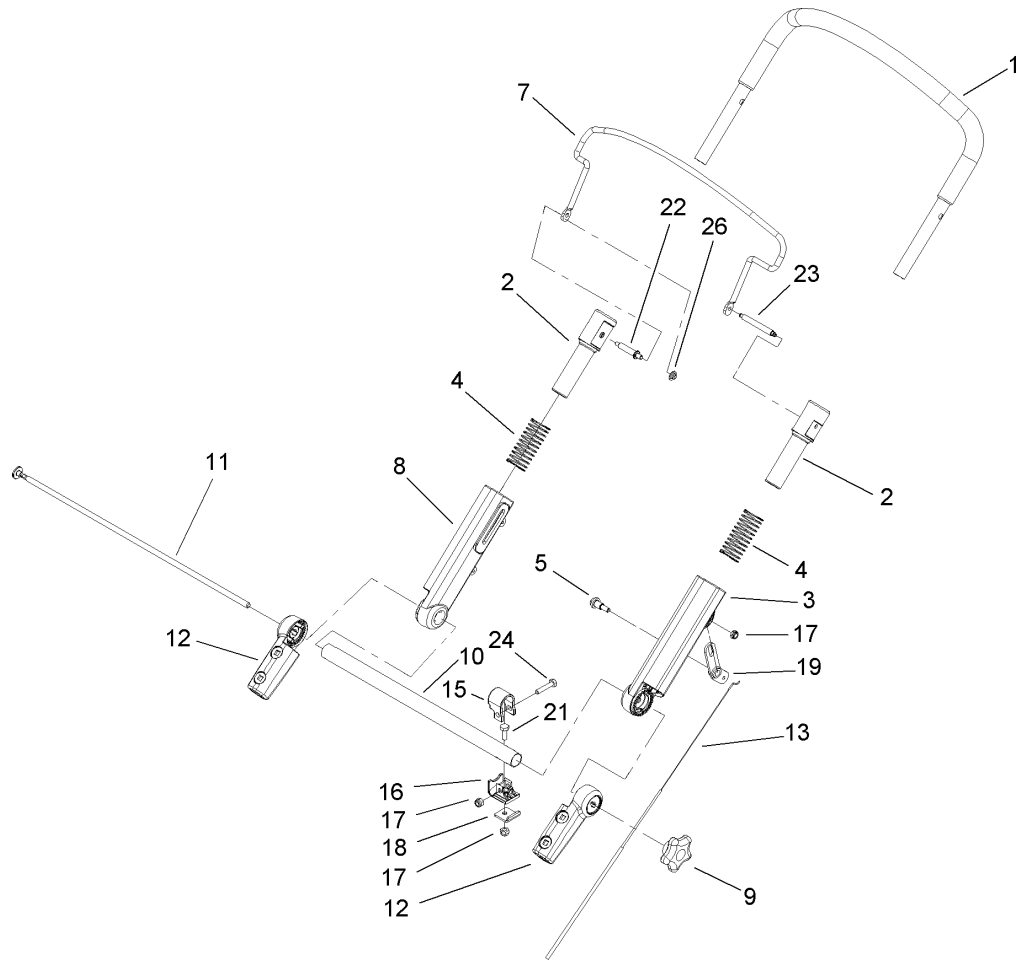
Ref	Part No.	Qty.	Description
24	3296-5	1	Nut-Lock
25	107-3904	1	Shield-Trailing
27	36-4780	1	Washer
28	108-9343	1	Arm-Rear Pivot, RH



### Transmission Assembly No. 107-3860

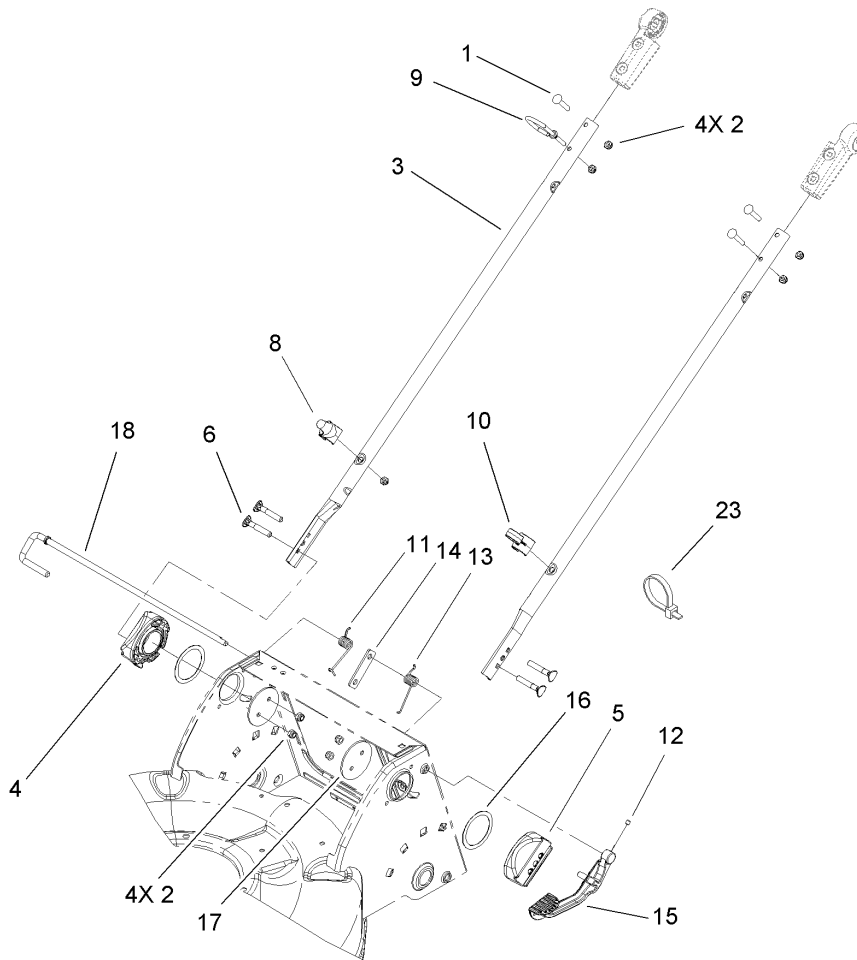
Ref	Part No.	Qty.	Description
1	32144-4	4	Screw-HWH
2	3285-19	1	Pin-Groove
3	36-4780	1	Washer
4	92-5790	1	Pinion
5	100-1048	1	Bearing-Ball
6	104-8671	1	Gear-Bevel, 37T
7	107-3861	1	Shaft-Output
8	104-8673	2	Bushing-Shaft, Output
9	104-8674	1	Gearcase-Upper
10	104-8675-03	1	Cover-Gearcase
11	105-6839	1	Gasket-Gearcase

--	--	--	--



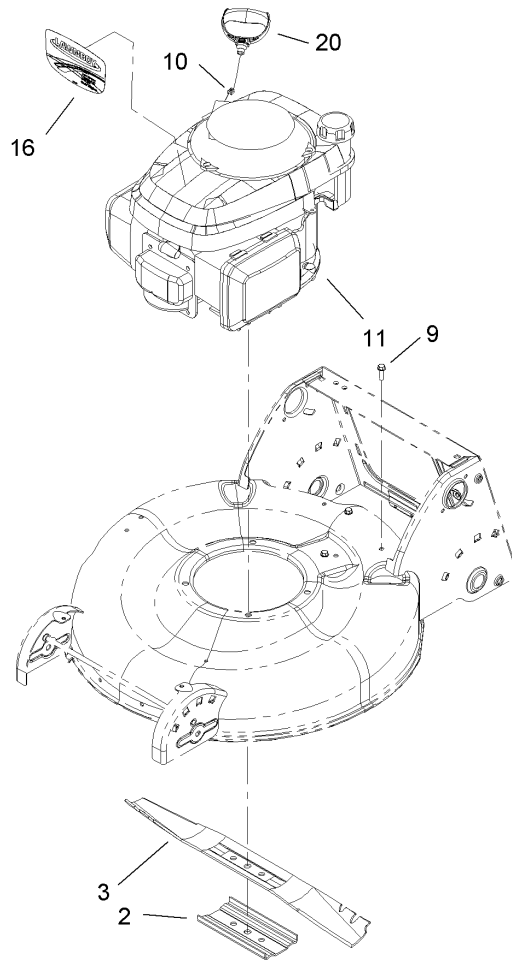
## Upper Handle Assembly

Ref	Part No.	Qty.	Description				
1	108-0974	1	Upper Handle ASM				
2	107-3866	2	Sleeve-Handle				
3	110-1755	1	Slide-Top, LH				
4	107-3869	2	Spring-Compression				
5	104-0858	1	Bolt-Shoulder				
7	107-3874-03	1	Bail-Brake				
8	107-3863	1	Slide-Top, RH				
9	107-3937	1	Knob				
10	107-3867-03	1	Tube-Cross				
11	107-3871	1	Rod-Threaded				
12	107-3865	2	Mount-Handle, Lower				
13	107-3902	1	Cable-Traction				
15	108-1045	1	Support-Cable				
16	108-1046	1	Support-Guide, Cable				
17	3296-73	2	Nut-Lock, NI				
18	108-7454	1	Clamp-Cable				
19	107-3893	1	Lever-Traction				
21	321-4	1	Screw-HH				
22	108-0959	1	Pin-Handle				
23	110-1753	1	Pin-Handle, BBC				
24	108-0988	1	Screw-CARR				
26	108-9378	1	Retainer-Push On				



## Lower Handle Assembly

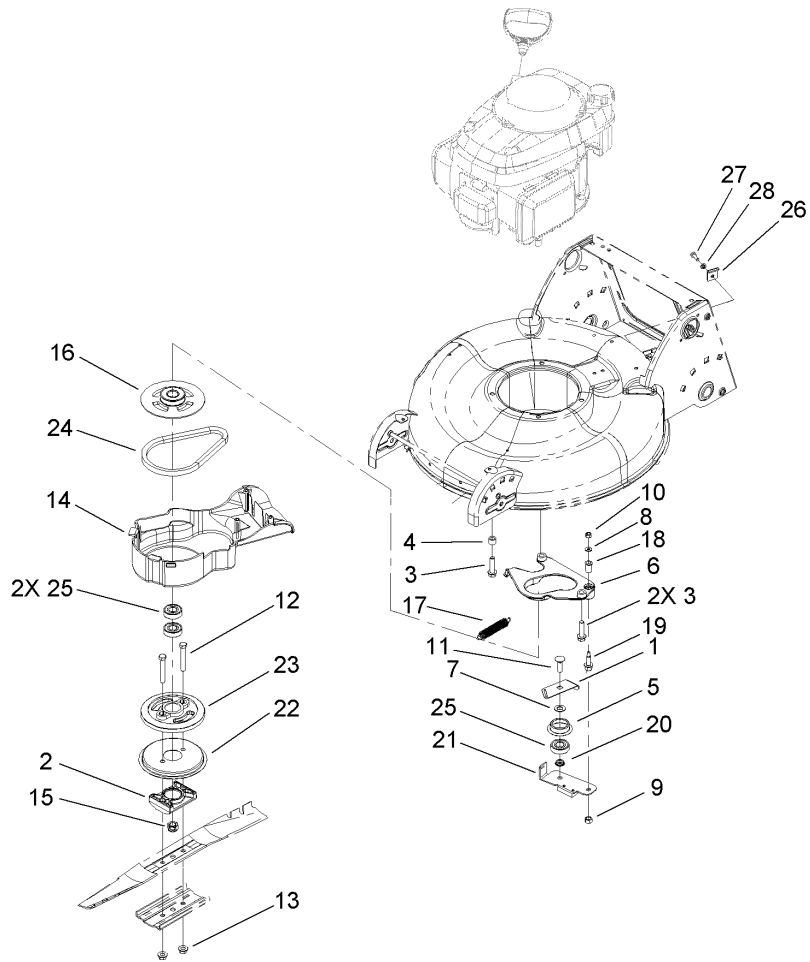
Ref	Part No.	Qty.	Description
1	108-0988	3	Screw-CARR
2	3296-73	9	Nut-Lock, NI
3	107-3887-03	2	Tube-Lower
4	108-9339-03	1	Mount-Handle, RH
5	108-9340-03	1	Mount-Handle, LH
6	95-4453	4	Screw
8	108-0994	1	Guide-Rope, Lower
9	107-3908	1	Guide-Rope, Upper
10	106-6805	1	Guide-Cable
11	108-0952	1	Spring-Torsion, LH
12	108-0989	1	Screw-Set
13	108-0953	1	Spring-Torsion, RH
14	107-3946	1	Plate-Lock, Handle
15	108-0985-03	1	Lever-Release
16	107-3947	2	Washer-Nylon
17	107-3944-03	2	Plate
18	107-3892	1	Rod-Release
23	614249	1	Strap-Tie



## Blade and Engine Assembly

Ref	Part No.	Qty.	Description				
2	108-3766-03	1	Support-Blade				
3	108-0954-03	1	Blade-21 In				
9	46-8091	3	Screw-HWH				
10	92-1701	1	Stop-Rope				
11		1	Engine-Honda, Gvc160A Nbl1				
16	108-7529	1	Decal				
20	106-8345	1	Handle-Recoil				



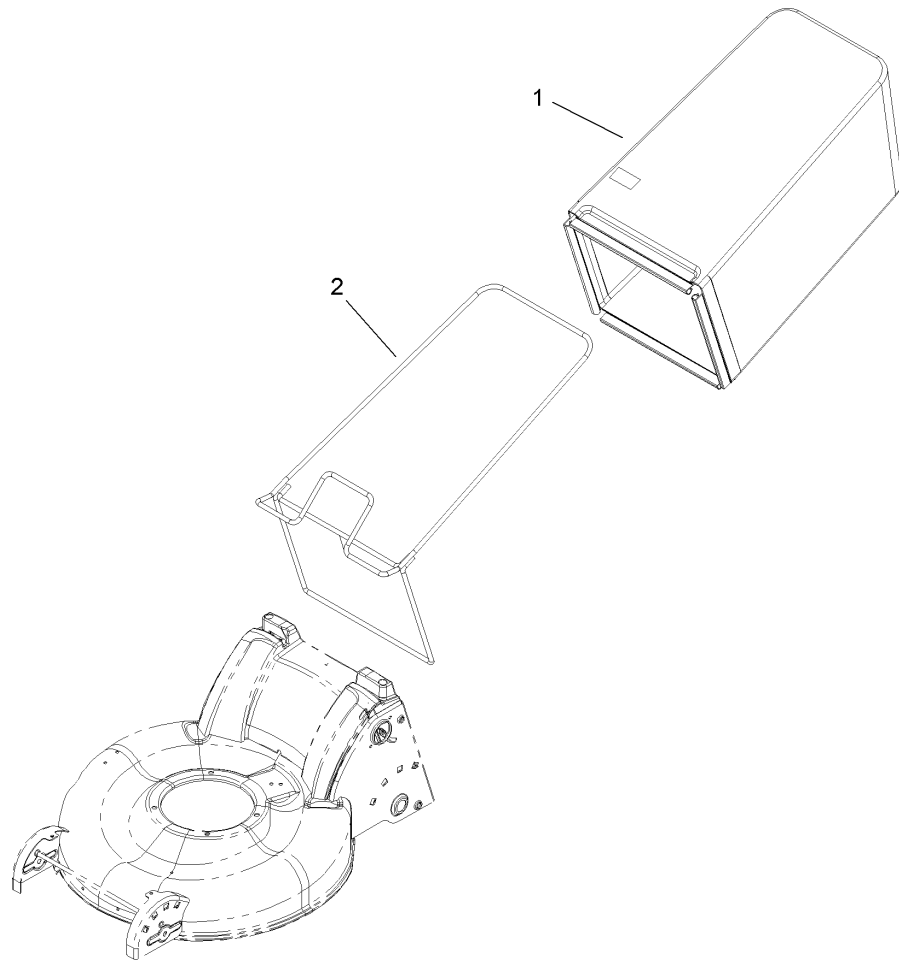


## Brake Assembly

Ref	Part No.	Qty.	Description
1	107-7471	1	Plate-Guide
2	107-7487	1	Support-Blade
3	32144-102	3	Screw-HWH
4	100-6447	1	Tube-Spacer
5	108-3790	1	Retainer-Belt
6	108-9341	1	Plate-Anchor
7	605256	1	Washer
8	3256-16	1	Washer-Flat
9	603773	2	Nut
10	3296-42	1	Nut-Lock, NI
11	3231-25	1	Screw-CARR
12	3211-42	2	Screw-HH
13	54-9190	2	Nut-Lock
14	108-1041	1	Cover
15	108-9342	1	Nut-Hex
16	107-0753	1	Pulley
17	108-3792	1	Spring-Tension, Brake
18	107-0797	1	Bushing
19	107-0759	1	Bolt-Shoulder
20	107-0758	1	Spacer-Bearing
21	107-7477	1	Brake Arm ASM
22	108-3787	1	Disc
23	107-0754	1	Drum
24	107-0796	1	Belt

Ref	Part No.	Qty.	Description
25	108-3765	3	Bearing-Ball
26	108-7454	1	Clamp-Cable
27	321-4	1	Screw-HH
28	3253-3	1	Washer-Lock

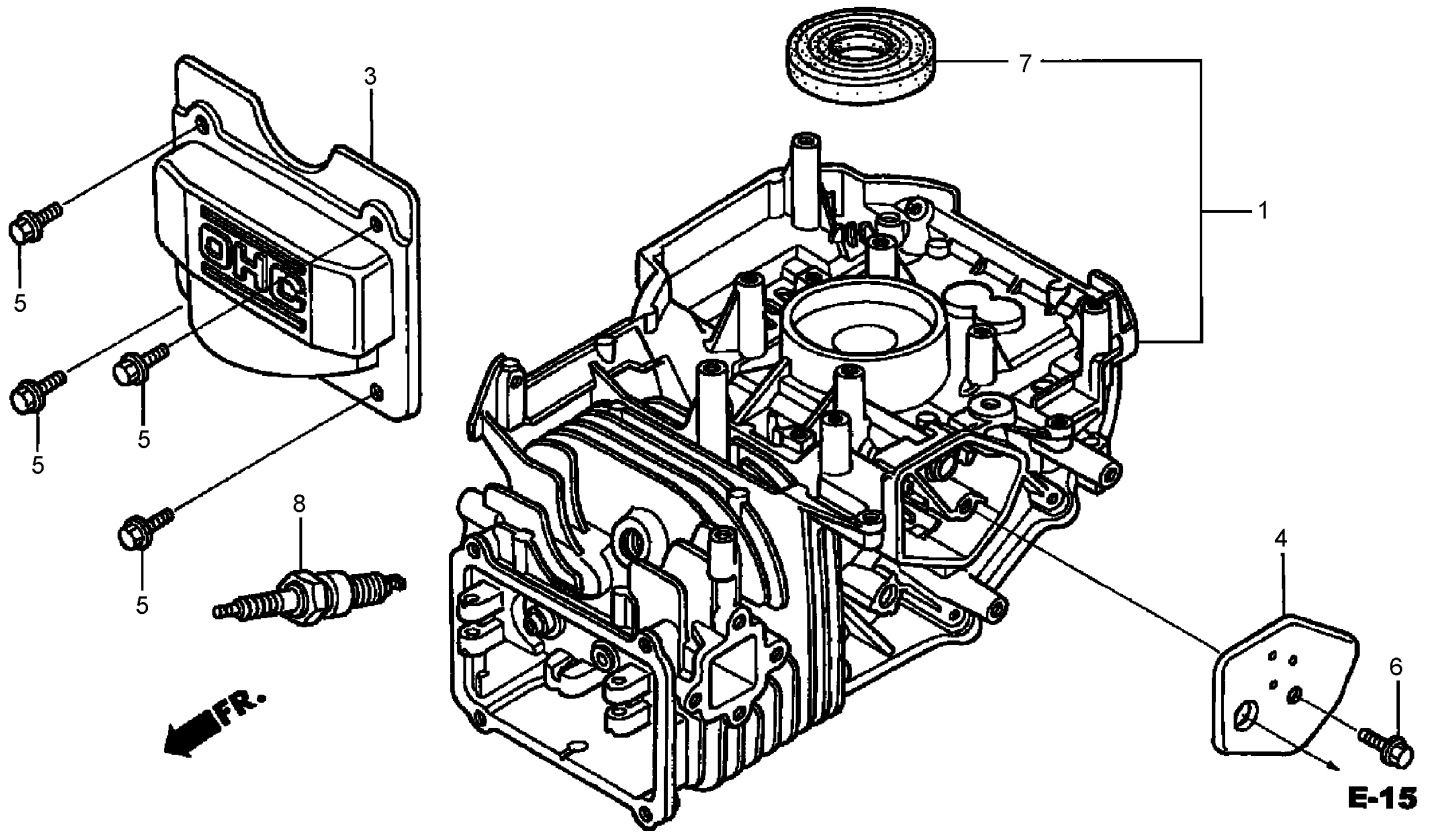




### Rear Bag Assembly

Ref	Part No.	Qty.	Description
1	107-3911	1	Bag-Grass
2	107-3912-03	1	Bag Frame ASM

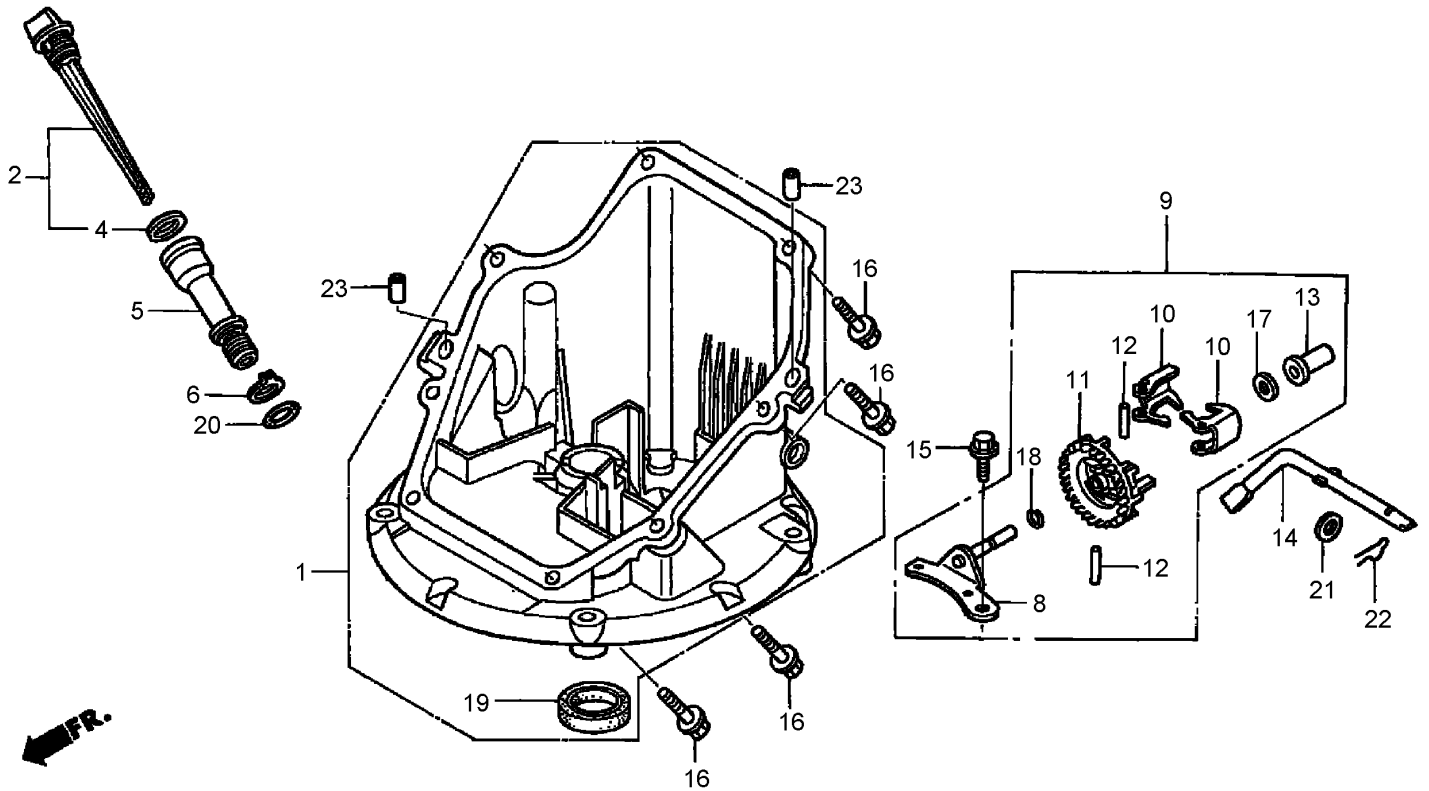
--	--	--	--



## Cylinder Barrel Assembly Honda GCV160A NBL1

Ref	Part No.	Qty.	Description
①	12000-ZL8-415	1	Cylinder ASM (010)
③	12311-ZL8-000	1	Cover-Head
④	12355-ZL8-000	1	Cover-Breather (Breather Valve ASM)
⑤	90013-883-000	4	Bolt-Flange (6X12) (Cl200)
⑥	90014-952-000	1	Bolt-Flange (6X14)
⑦	91201-ZL8-003	1	Seal (25.4X62X6)
⑧	98079-56846	1	Spark Plug (Bpr6Es) (Ngk)

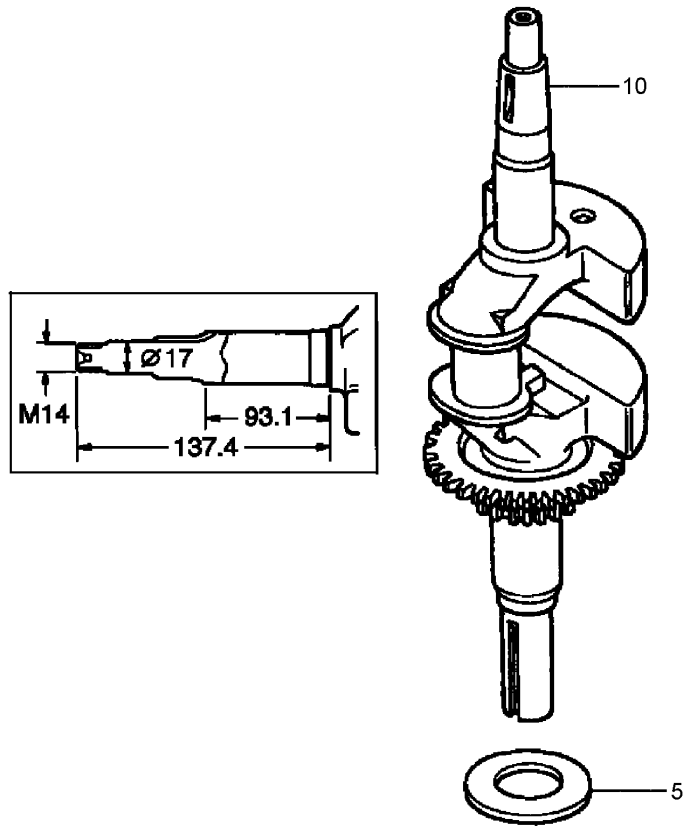
--	--	--	--



## Oil Pan Assembly Honda GCV160A NBL1

Ref	Part No.	Qty.	Description
❶	11300-ZM0-405	1	Oil Pan ASM (000)
❷	15650-ZM0-801	1	Dipstick-Oil
❸	15625-ZE6-000	1	Gasket-Cap, Oil Filler
❹	15631-ZM0-000	1	Extension-Filler, Oil
❺	15639-ZM0-000	1	Washer-Lock, Extension
❻	16508-ZM0-010	1	Shaft-Holder, Governor
❼	16510-ZM0-010	1	Governor ASM
❽	16511-ZL8-000	2	Weight-Governor
❾	16512-ZM0-000	1	Holder-Weight, Governor
❿	16513-ZE1-000	2	Pin-Weight, Governor
⓫	16531-ZE1-000	1	Slider-Governor
⓬	16541-ZM0-000	1	Shaft-Arm, Governor
⓭	90014-952-000	1	Bolt-Flange (6X14)

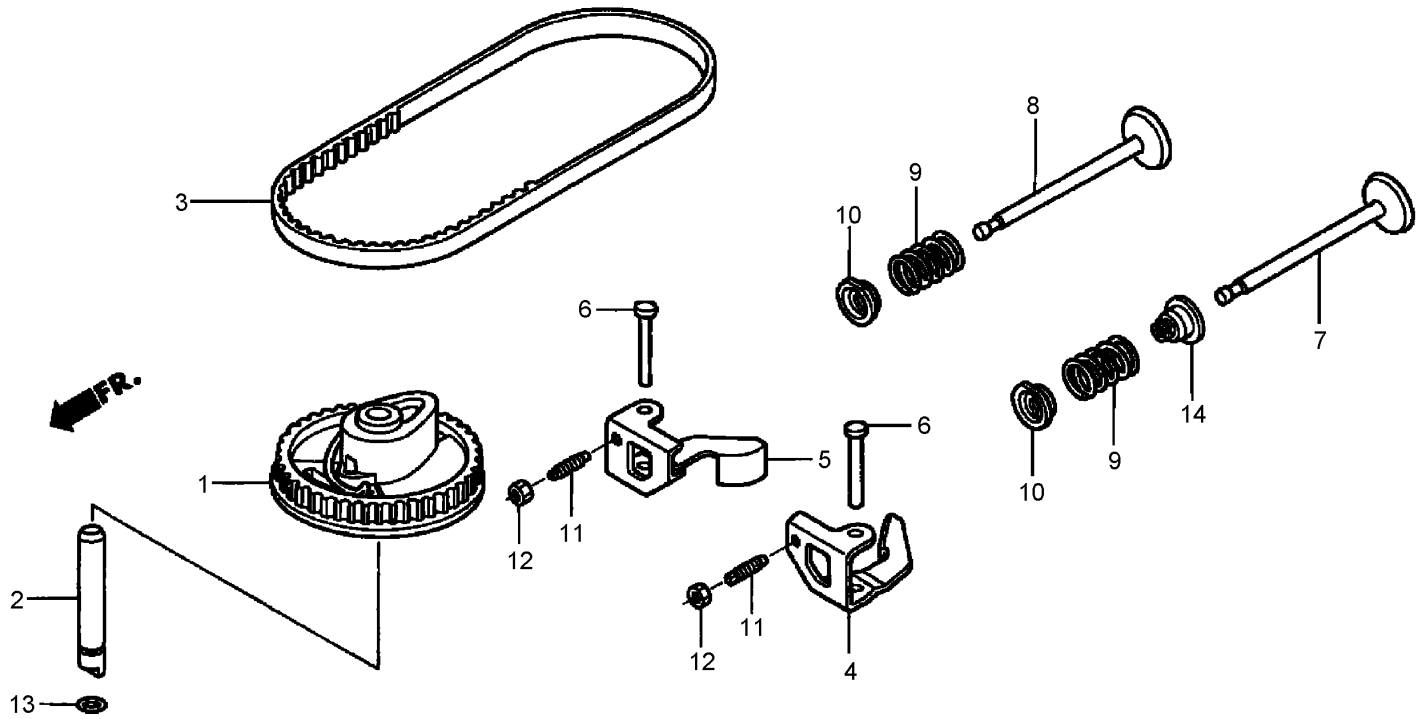
Ref	Part No.	Qty.	Description
❶❹	90121-952-000	8	Bolt-Flange (6X25)
❶❷	90451-ZE1-000	1	Washer-Thrust (6Mm)
❶❸	90602-ZE1-000	1	Clip-Holder, Governor
❶❹	91202-ZL8-003	1	Seal-Oil (28X41.25X6)
❶❺	91303-KF0-003	1	O-Ring (14.8X2.4) (Arai)
❶❻	91356-MA6-005	1	O-Ring
❶❼	94101-06800	1	Washer-Plain (6Mm)
❶❽	94251-08000	1	Pin-Lock (8Mm)
❶❾	94301-08200	2	Pin-Dowel (8X20)



### Crankshaft Assembly Honda GCV160A NBL1

Ref	Part No.	Qty.	Description				
5	90402-ZL8-000	1	Washer-Thrust				
10	13310-Z0L-S20	1	Crankshaft				

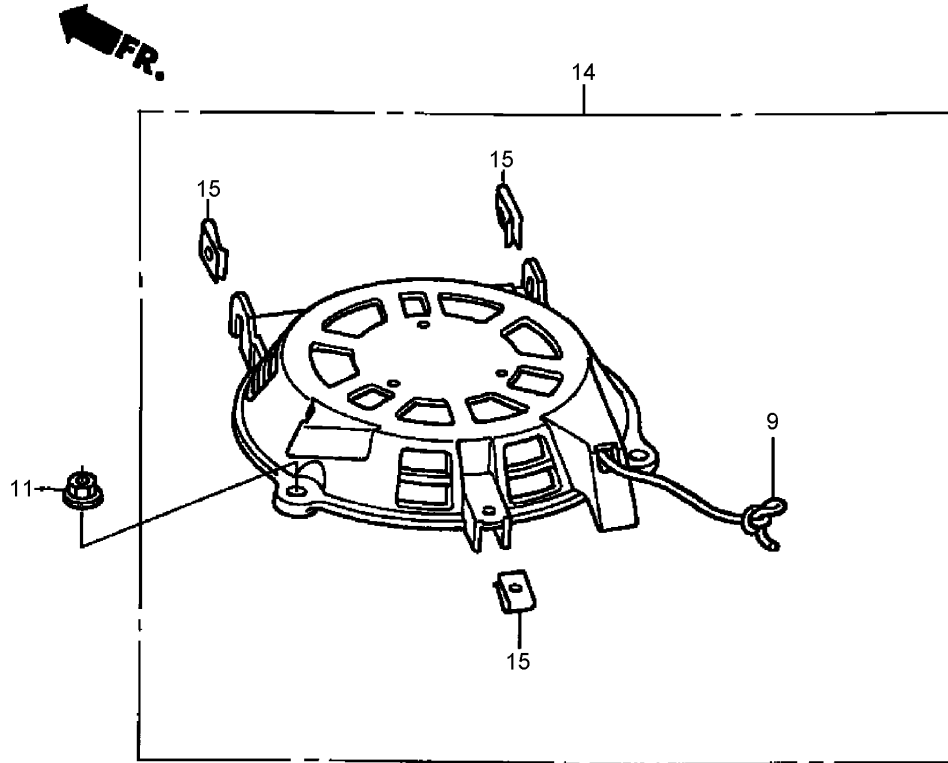




## Camshaft Pulley Assembly Honda GCV160A NBL1

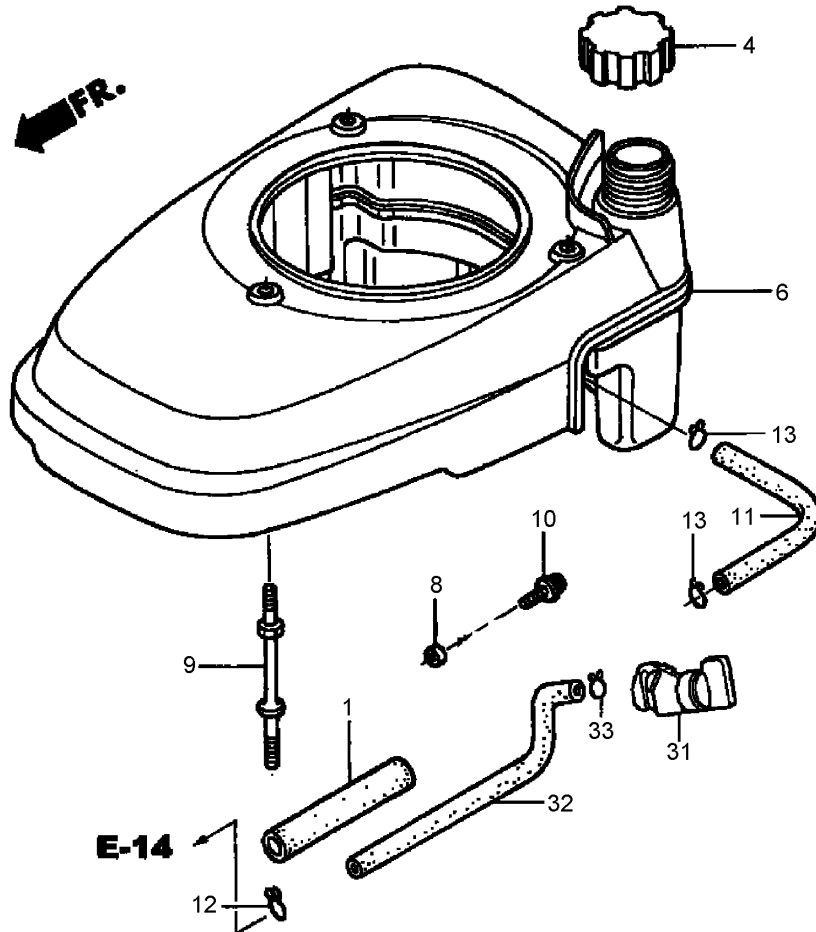
Ref	Part No.	Qty.	Description
❶	14320-ZL8-010	1	Pulley-Camshaft
❷	14324-ZL8-000	1	Shaft-Pulley
❸	14400-Z0J-014	1	Belt-Timing (84Hu7 G-200)
❹	14431-Z0J-000	1	Rocker Arm-Valve, Intake
❺	14441-Z0J-000	1	Rocker Arm-Valve, Exhaust
❻	14461-ZL8-000	2	Shaft-Arm, Rocker
❼	14711-Z0J-000	1	Valve-Intake
❽	14721-ZL8-000	1	Valve-Exhaust
❾	14751-ZL8-000	2	Spring-Valve
❿	14771-Z0J-000	2	Retainer-Spring, Valve
⓫	90012-333-000	2	Screw-Tappet, Adj.
⓬	90206-001-000	2	Nut-Tappet, Adj.
Ⓜ	91301-ZM0-V31	1	O-Ring (6.8X1.9)

Ref	Part No.	Qty.	Description
Ⓨ	12209-ZM0-003	1	Seal-Stem, Valve



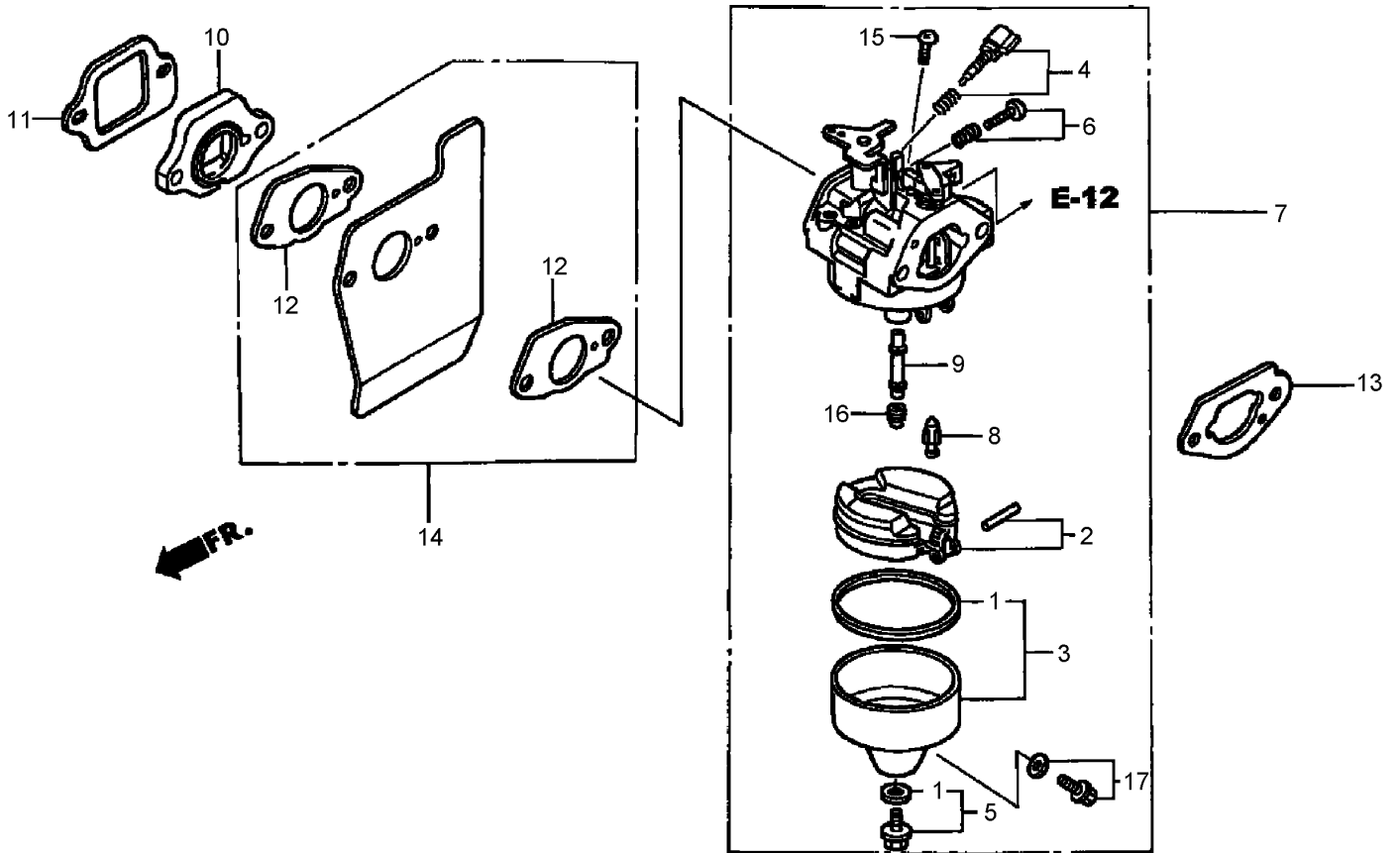
## Recoil Starter Assembly Honda GCV160A NBL1

Ref	Part No.	Qty.	Description				
9	28462-Z0L-V71	1	Rope-Starter, Recoil				
11	90201-ZM0-000	3	Nut-Flange (6Mm)				
14	28400-Z0L-V72	1	Recoil Starter ASM				
15	66871-KY2-700	3	Nut-Cowl				



## Fan Cover Assembly Honda GCV160A NBL1

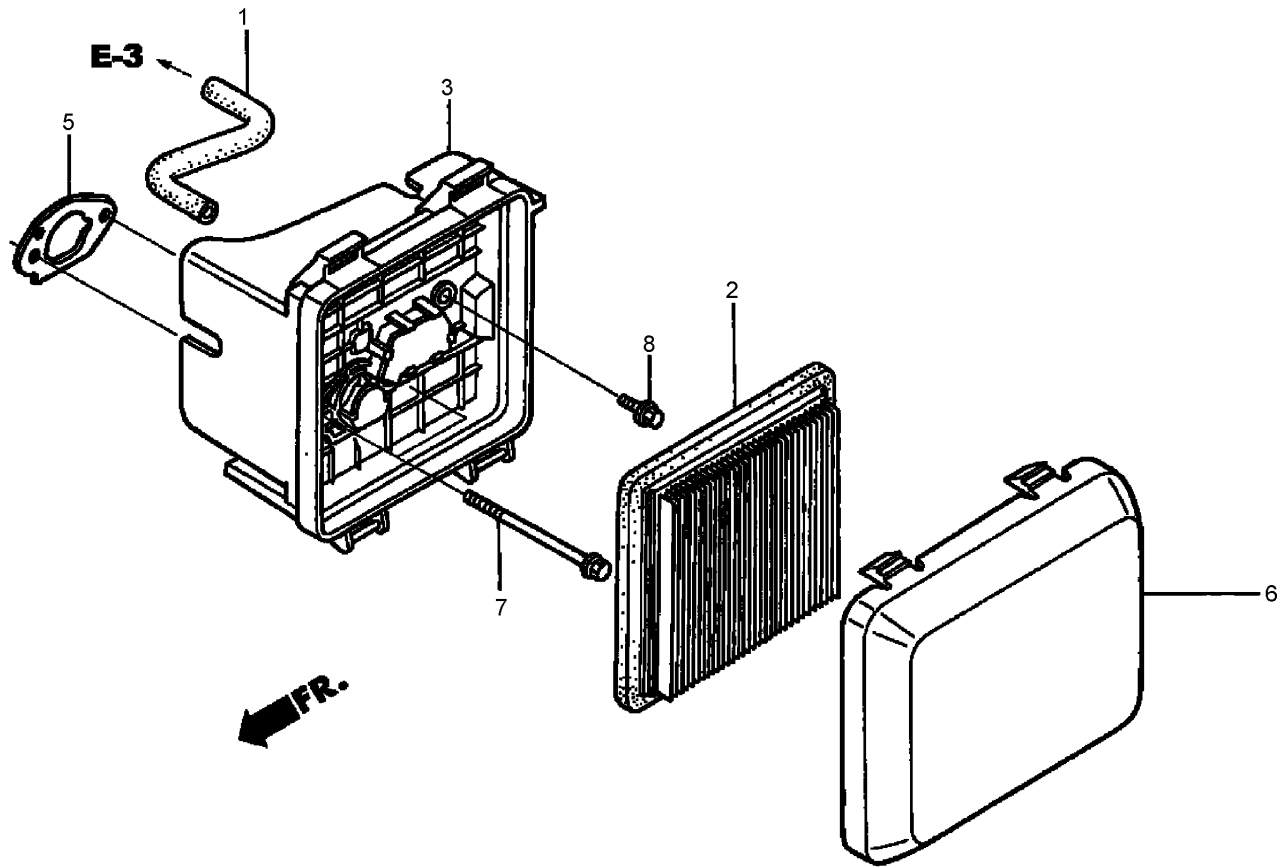
Ref	Part No.	Qty.	Description				
❶	16854-ZH8-000	1	Supporter-Rubber (107Mm)				
❷	17620-ZL8-013	1	Fuel Tank Cap ASM				
❸	19610-Z0L-000ZA	1	Cover-Fan				
❹	33609-GK4-620	1	Collar-Turn Signal, Front				
❺	90043-ZL8-000	3	Bolt-Stud				
❻	93891-05010-08	1	Screw-Washer (5X10)				
❼	95001-55008-60M	1	Fuel-Hose (5.5X8000) (5.5X100)				
❽	95002-02080	1	Clip-Tube (B8)				
❾	95002-02100	2	Clip-Tube (B10)				
❿	16950-ZM0-003	1	Petcock ASM				
⓫	17702-ZM0-800	1	Tube- Fuel				
⓬	95002-02080	1	Clip-Tube (B8)				



## Carburetor Assembly Honda GCV160A NBL1

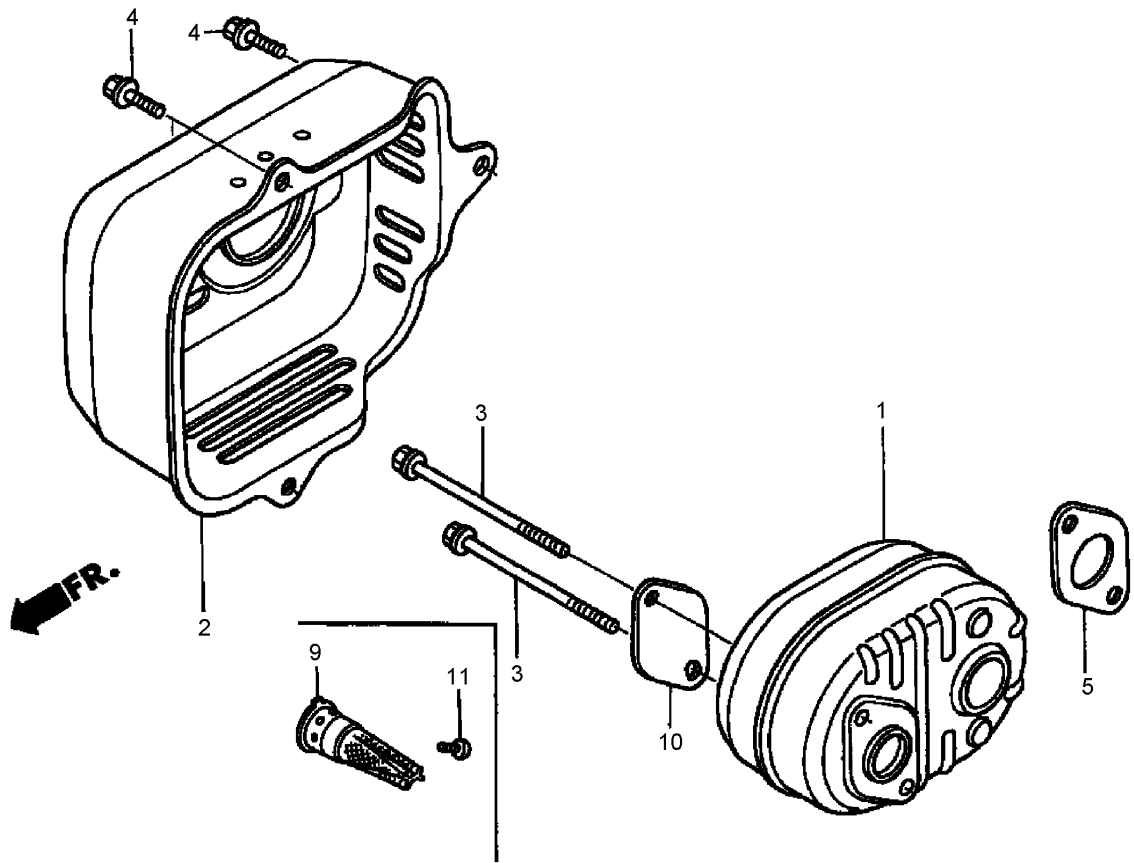
Ref	Part No.	Qty.	Description
●1	16010-883-015	1	Gasket Set
●2	16013-ZL1-003	1	Float Set
●3	16015-887-782	1	Chamber Set-Float
●4	16016-ZG0-W00	1	Screw Set (Carburetor No.)
●5	16028-ZE0-005	1	Screw-Set
●6	16029-ZG0-901	1	Screw Set (Carburetor No.)
●7	16100-ZM0-804	1	Carburetor ASM (Bb62B E)
●8	16155-ZM0-013	1	Valve-Float (Carburetor No.)
●9	16166-ZM0-003	1	Nozzle-Main
●10	16211-ZL8-000	1	Insulator-Carburetor
●11	16212-ZL8-000	1	Gasket-Insulator
●12	16221-883-800	2	Gasket-Carburetor
●13	16228-ZL8-000	1	Gasket-Carburetor (Choke Side)

Ref	Part No.	Qty.	Description
●14	19650-ZM0-000	1	Guide-Air
●15	93500-05006-0H	1	Screw-Pan (5X6)
●16	99101-124-0600	1	Jet-Main (#60)
●16	99101-124-0620	1	Jet-Main (#62)
●16	99101-124-0650	1	Jet-Main (#65)
●17	16024-ZE1-811		Screw Set-Drain



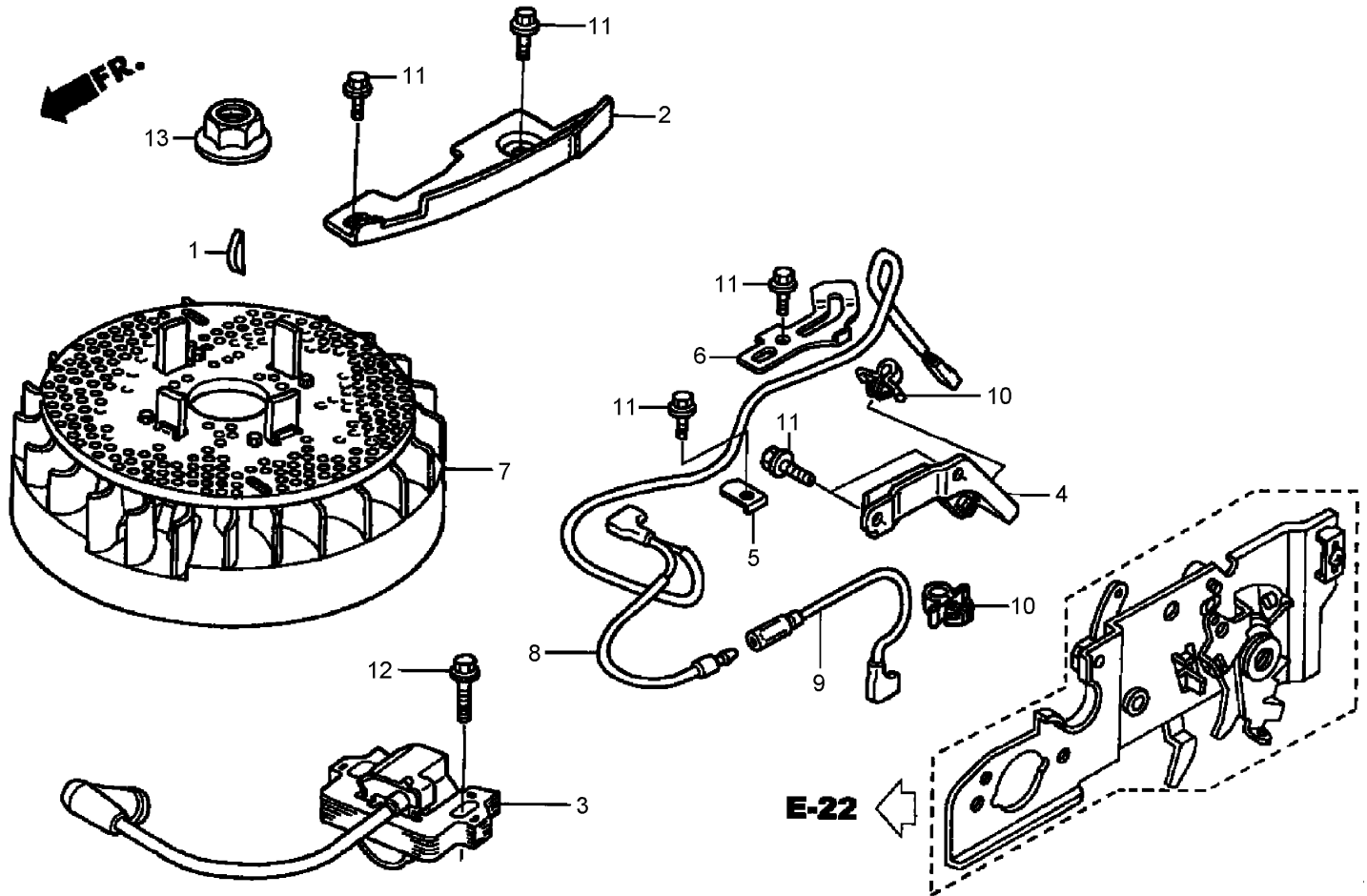
## Air Cleaner Assembly Honda GCV160A NBL1

Ref	Part No.	Qty.	Description
❶	15721-ZM0-000	1	Tube-Breather
❷	17211-ZL8-013	1	Element-Cleaner, Air
❸	17220-ZM0-000	1	Air Cleaner Case ASM
❺	17228-ZM0-000	1	Gasket-Cleaner, Air
❻	17231-Z0L-030	1	Cover-Cleaner, Air
❼	90003-ZM0-000	2	Bolt-Flange (6X86) (Ct200)
❽	95701-06014-08	1	Bolt-Flange (6X14)

## Muffler Assembly Honda GCV160A NBL1

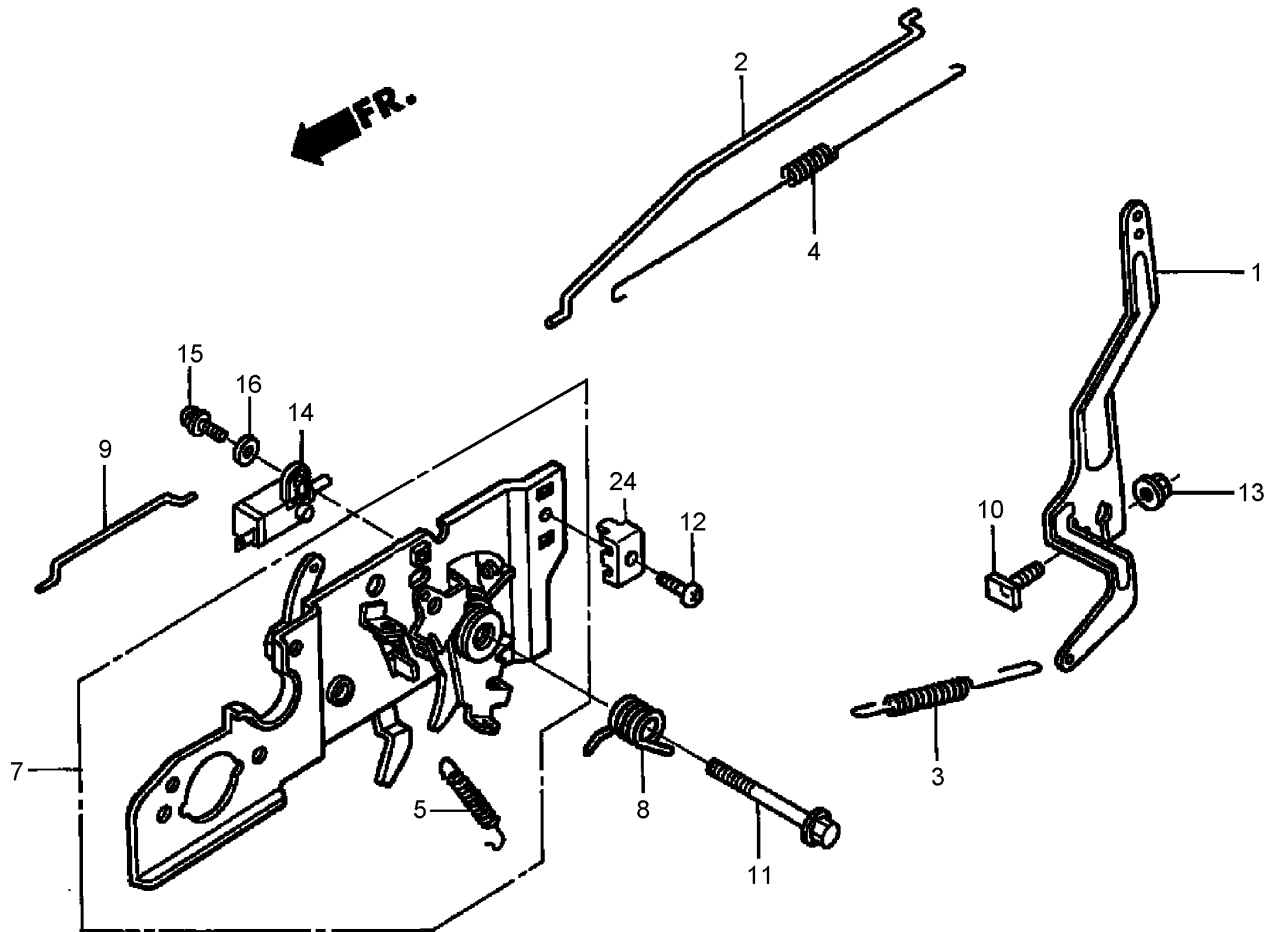
Ref	Part No.	Qty.	Description
❶	18310-ZM0-000	1	Muffler
❷	18321-Z0L-J00	1	Protector-Muffler (Cbu)
❸	90004-ZL8-000	2	Bolt-Flange (6X79) (Ct200)
❹	90013-883-000	3	Bolt-Flange (6X12) (Ct200)
❺	18381-ZL8-305		Gasket-Muffler
❾	18350-ZL8-000		Arrester-Spark
❿	18356-ZL8-000		Plate-Number, Arrester
⓫	90055-ZE1-000		Screw-Tapping (4X6)



## Flywheel Assembly Honda GCV160A NBL1

Ref	Part No.	Qty.	Description
●1	13331-357-000	1	Key-Woodruff (25X18)
●2	19612-ZM0-J20	1	Plate-Side
●3	30500-Z0J-003	1	Ignition Coil ASM
●4	30547-Z0L-S00	1	Clamp-Wire, Stop Switch
●5	30548-ZL8-000	1	Clamp-Wire, Stop Switch
●6	30549-ZL8-000	1	Clamp-Wire
●7	31105-Z0J-010	1	Flywheel ASM
●8	32195-Z0L-S20	1	Wire-Switch, Stop
●9	32196-Z0L-S20	1	Wire-Switch, Stop
●10	51125-Z0L-003	2	Holder-Wire
●10	90681-959-003	2	Clip-Cable (A)
●11	90013-883-000	6	Bolt-Flange (6X12) (Ct200)
●12	90022-888-010	1	Bolt-Flange (6X20)

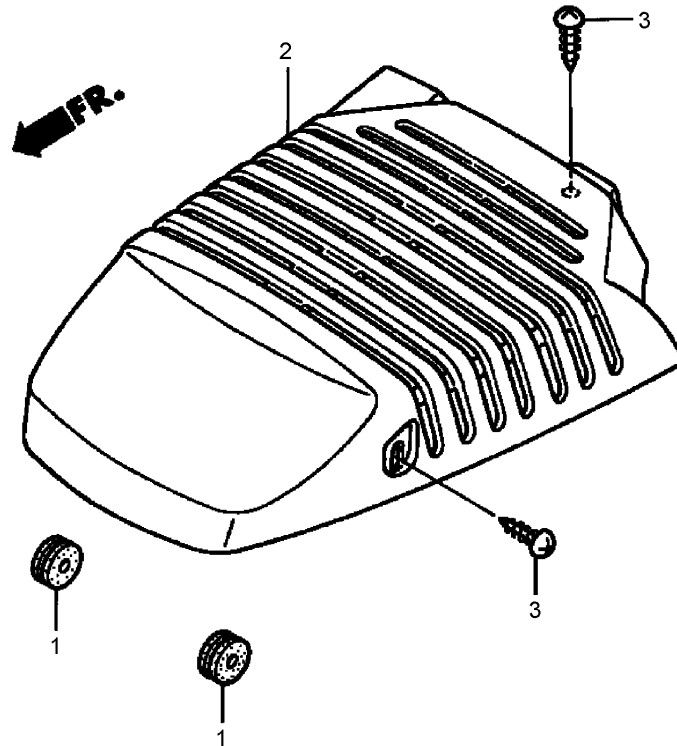
Ref	Part No.	Qty.	Description
●13	90201-878-003	1	Nut (14Mm)



## Control Assembly Honda GCV160A NBL1

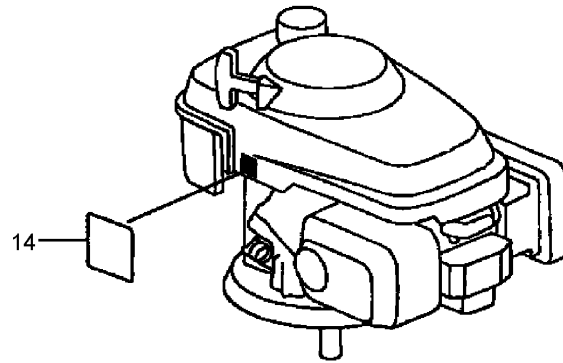
Ref	Part No.	Qty.	Description
❶	16551-ZM0-010	1	Arm-Governor
❷	16555-ZM0-000	1	Rod-Governor
❸	16561-Z0L-000	1	Spring-Governor
❹	16562-ZM0-000	1	Spring-Return, Throttle
❺	16576-ZE7-300	1	Spring-Lever
❷	16580-ZM0-J22	1	Base-Control
❸	16593-ZM0-000	1	Spring-Return, Control Lever
❹	16674-ZM0-000	1	Rod-Choke
❺	90015-ZE5-010	1	Bolt-Arm, Governor
❻	90016-ZM0-000	1	Bolt-Flange (6X45) (Ct200)
❼	93500-05016-0A	1	Screw-Pan (5X16)
❽	94050-06000	1	Nut-Flange (6Mm)
❾	35120-ZL8-003	1	Engine Stop Switch ASM
❿	93892-04012-00	1	Screw-Washer

Ref	Part No.	Qty.	Description
❿	94103-04000	1	Washer-Plain
⓫	16617-VG3-000	1	Holder-Cable



## Top Cover Assembly Honda GCV160A NBL1

Ref	Part No.	Qty.	Description				
●1	16613-883-610	2	Grommet-Rod, Choke				
●2	19721-Z0L-000ZA	1	Cover-Top				
●3	90137-SH3-000	3	Screw-Tapping (4X16)				



### Label Assembly Honda GCV160A NBL1

Ref	Part No.	Qty.	Description				
● 14	87594-VG3-010	1	Mark-Caution, Oil				

# Attachments and Accessories

## For 10697 - Insight Gold Lawn Mower

<b>Product Name</b>	<b>Model/Part</b>
Loose Parts Kit .....	108-9355
Replacement Bag .....	89815
Rear Bag Kit .....	89913
21 In Blade .....	89914
Cruise Control Kit .....	89919
Air Filter .....	89928
Spark Plug .....	89947

# NOTES

# NOTES

