



# Roll-Over Protection System (ROPS)

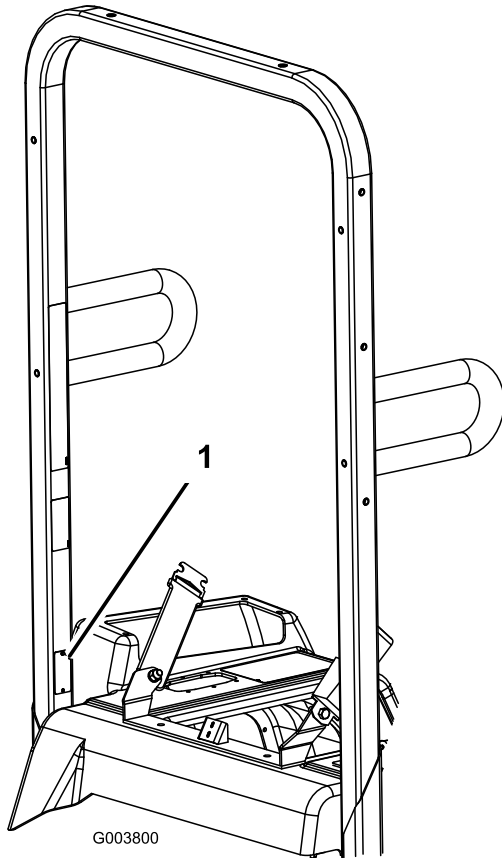
For Multi-Pro® 1200/1250 Sprayer

Model No. 41361—Serial No. 250000001 and Up

## Installation Instructions

You may contact Toro directly at [www.Toro.com](http://www.Toro.com) for product and accessory information, help finding a dealer, or to register your product.

Whenever you need service, genuine Toro parts, or additional information, contact an Authorized Service Dealer or Toro Customer Service and have the model and serial numbers of your product ready. Figure 1 identifies the location of the model and serial numbers on the product. Write the numbers in the space provided.



**Figure 1**

1. Model and serial number plate

Model No. \_\_\_\_\_  
Serial No. \_\_\_\_\_

This manual identifies potential hazards and has safety messages identified by the safety alert symbol (Figure 2), which signals a hazard that may cause serious injury or death if you do not follow the recommended precautions.



**Figure 2**

1. Safety alert symbol

This manual uses 2 other words to highlight information. **Important** calls attention to special mechanical information and **Note** emphasizes general information worthy of special attention.

**Note:** The Roll-Over Protection System (ROPS) will reduce the risk of serious or fatal injury in the event of a tip over, although the system cannot protect the operator from all possible injuries.



**When used alone, the roll bar cannot provide complete protection against personal injury.**

**Always use the seat belt and roll bar together.**



**Altering the ROPS in any manner may affect its durability and use, which may result in injury or death.**

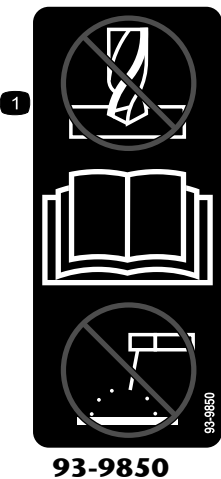
**Replace a damaged ROPS. Do not repair or modify it. Any alteration of the ROPS must be approved by the manufacturer.**

# Safety

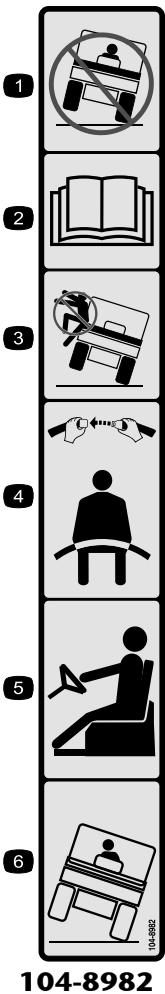
## Safety and Instructional Decals



Safety decals and instructions are easily visible to the operator and are located near any area of potential danger. Replace any decal that is damaged or lost.



1. Do not repair or revise—read the *Operator's Manual*.
- 



- |   |   |
|---|---|
| 1. Tipping can occur if the machine is improperly operated. | 4. Wear the seat belt.                                  |
| 2. Read the <i>Operator's Manual</i> .                      | 5. Hold tight and brace your feet.                      |
| 3. Do not jump from a tipping machine.                      | 6. Lean away from the direction the machine is tipping. |
-

# Installation

## Loose Parts

Use the chart below to verify that all parts have been shipped.

| Step | Description   | Qty.                  | Use                     |
|------|---|-----------------------|-------------------------|
| 1    | No parts required   | –                     | Prepare the machine.    |
| 2    | Seat belt assembly<br>Bolt (7/16 x 1-1/4 inch)<br>Washer (7/16 inch)<br>Lock nut (7/16 inch)<br>Seat belt bracket | 1<br>2<br>2<br>2<br>2 | Install the seat belts. |
| 3    | ROPS bar assembly<br>Socket head bolt (1/2 x 1-1/4 inches)<br>Flat washer (1/2 inch)<br>Lock nut (1/2 inch)       | 1<br>8<br>8<br>8      | Install the ROPS bar.   |

### Step

# 1

## Preparing the Machine

### No Parts Required

### Procedure

**Note:** Determine the left and right sides of the machine from the normal operating position.



If you leave the key in the ignition switch, someone could accidentally start the engine and seriously injure you or other bystanders.

Remove the key from the ignition you do any maintenance.

1. Position the machine on a level surface. Set the parking brake, turn the ignition off, and remove the key.
2. Tip the seat forward.

### Step

# 2

## Installing the Seat Belts

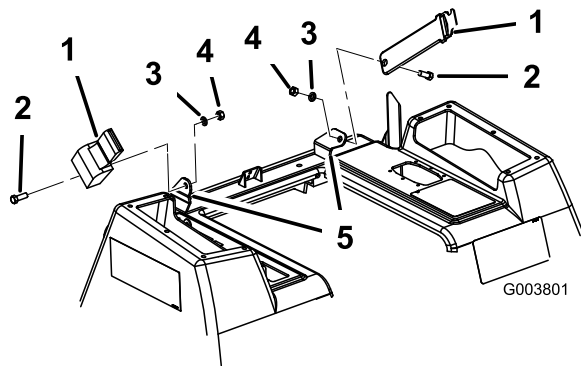
### Parts needed for this step:

|   |                          |
|---|--------------------------|
| 1 | Seat belt assembly       |
| 2 | Bolt (7/16 x 1-1/4 inch) |
| 2 | Washer (7/16 inch)       |
| 2 | Lock nut (7/16 inch)     |
| 2 | Seat belt bracket        |

### Procedure

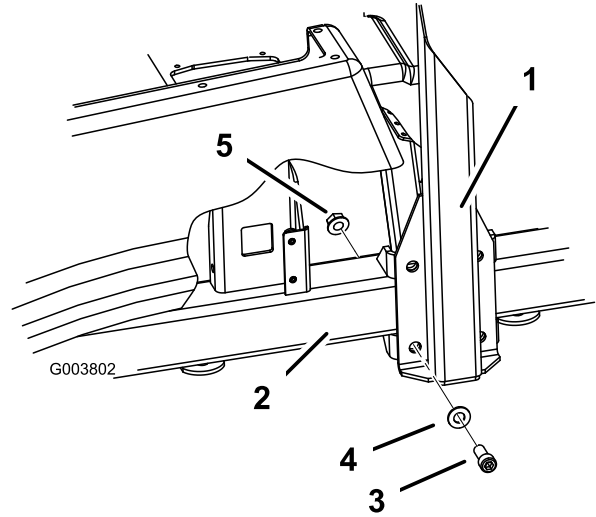
Install the seat belt assembly to the outside of the seat belt bracket (Figure 3) using 2 bolts (7/16 x 1-1/4 inch), 2 lock washers (7/16 inch), and 2 nuts (7/16 inch).

**Important:** Torque the nuts to 70 ft-lb  $\pm$  7 ft-lb (95 N·m  $\pm$  9 N·m).



**Figure 3**

1. Seat belt assembly
2. Bolt (7/16 x 1-1/4 inch)
3. Washer (7/16 inch)
4. Lock nut (7/16 inch)
5. Seat belt bracket



**Figure 4**

1. ROPS bar assembly
2. Sprayer frame
3. Socket head bolt (1/2 x 1-1/4 inches)
4. Flat washer (1/2 inch)
5. Lock nut (1/2 inch)

## Step

# 3

## Installing the ROPS Bar

### Parts needed for this step:

|   |                                       |
|---|---------------------------------------|
| 1 | ROPS bar assembly                     |
| 8 | Socket head bolt (1/2 x 1-1/4 inches) |
| 8 | Flat washer (1/2 inch)                |
| 8 | Lock nut (1/2 inch)                   |

### Procedure

1. Position the ROPS bar assembly over the vehicle on each side of the sprayer frame behind and below the seats (Figure 4).

2. Secure the ROPS bar assembly to the frame (Figure 4) using 4 socket head bolts (1/2 x 1-1/4 inches), washers (1/2 inch), and flange nuts (1/2 inch).
3. Torque the nuts to 105 ft-lb  $\pm$  11 ft-lb (142 N·m  $\pm$  15 N·m).
4. Repeat for opposite side.