



**Auger Head  
TX 413  
Compact Utility Loaders**

Model No. 22804 - 240000001 and up.

## Parts Catalog

### Ordering Replacement Parts

To order replacement parts, please supply the part number, the quantity, and the description of each part desired.

### Understanding Reference Numbers

Each identified part in an illustration has a reference number. The reference number for a part also appears in the parts list, along with other information about the part.

This catalog uses two special reference number formats, one to indicate parts in a service assembly and another to indicate the quantity of a given part in an illustration.

### Service Assembly Reference Numbers

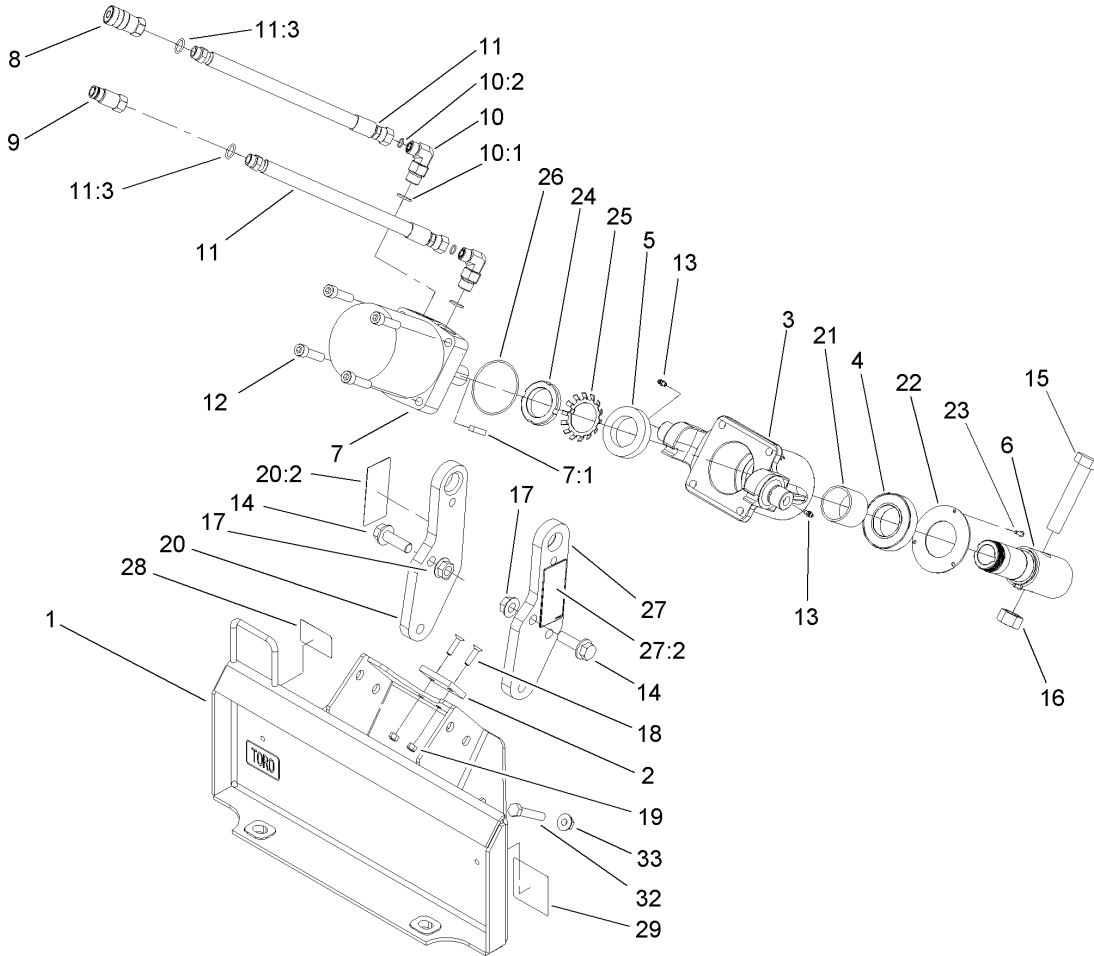
Parts in service assemblies have reference numbers in the form a:b. The a represents the reference number of the entire service assembly and the b represents a sequential number unique to each part within the service assembly.

For example, a wheel assembly might be identified by reference number 6, the tire by 6:1, the valve by 6:2, and the wheel by 6:3. When you order the assembly identified by reference number 6, you receive all parts identified by reference numbers 6:1, 6:2, and 6:3. However, you may also order any part individually. Reference numbers of this type appear in illustrations and in part lists.

### Reference Numbers Indicating Quantity

In an illustration, if a reference number indicates more than one part, the reference number has the form nX y. The n represents the quantity of the part, the X is the multiplication symbol, and the y represents the reference number.

For example, in an illustration, the reference number 2X 37 means that two of the parts identified by reference number 37 are indicated.



## Auger Head Assembly

Ref	Part No.	Qty.	Description
1	105-7065-03	1	Frame ASM
2	99-2653	1	Pad-Stop
3	105-7109-03	1	Auger Housing
4	104-6112	1	Bearing
5	102914	1	Bearing
6	105-7105	1	Shaft-Auger
7	104-6113	1	Motor-Hydraulic
7:1	100-5863	1	Key
7:2	107-9304	1	Kit-Seal (Not Illustrated)
8	104-6115	1	Coupler-Female
8:1	107-9300	1	Kit-Seal, Coupler (Not Illustrated)
9	104-6114	1	Nipple-Connector
9:1	107-9301	1	Kit-Seal, Nipple (Not Illustrated)
10	340-105	2	Fitting-HYD, 90 DEG
10:1	237-80	1	O-Ring
10:2	237-30	1	O-Ring
11	105-0321	2	HYD Hose ASM
11:3	237-79	1	O-Ring
12	3274-5	4	Screw-HSH
13	302-5	2	Fitting-Grease
14	104-5870	6	Screw
15	98-9062	1	Screw
16	3217-15	1	Nut-Hex
17	32128-50	6	Nut-Flange

Ref	Part No.	Qty.	Description
18	32108-103	2	Screw-FH
19	3296-29	2	Nut-Lock, NI
20	106-7688	1	Plate-Pivot, LH
20:2	105-0326	1	Decal-Danger
21	106-7583	1	Spacer-Bearing
22	106-7582-03	1	Plate-Protector, Bearing
23	3274-39	3	Screw-HSBH
24	106-7609	1	Nut-Bearing
25	106-7608	1	Lockwasher-Bearing
26	237-161	1	O-Ring
27	106-7689	1	Plate-Pivot, RH
27:2	105-0326	1	Decal-Danger
28	92-7981	1	Decal
29	98-3269	1	Decal
32	325-11	1	Screw-HH
33	32128-49	1	Nut-HHF