



## Concrete Breaker Compact Utility Loaders

Model No. 23135 - 230000001 and up.

### Parts Catalog

---

#### Ordering Replacement Parts

To order replacement parts, please supply the part number, the quantity, and the description of each part desired.

#### Understanding Reference Numbers

Each identified part in an illustration has a reference number. The reference number for a part also appears in the parts list, along with other information about the part.

This catalog uses two special reference number formats, one to indicate parts in a service assembly and another to indicate the quantity of a given part in an illustration.

#### Service Assembly Reference Numbers

Parts in service assemblies have reference numbers in the form a:b. The a represents the reference number of the entire service assembly and the b represents a sequential number unique to each part within the service assembly.

For example, a wheel assembly might be identified by reference number 6, the tire by 6:1, the valve by 6:2, and the wheel by 6:3. When you order the assembly identified by reference number 6, you receive all parts identified by reference numbers 6:1, 6:2, and 6:3. However, you may also order any part individually. Reference numbers of this type appear in illustrations and in part lists.

#### Reference Numbers Indicating Quantity

In an illustration, if a reference number indicates more than one part, the reference number has the form nX y. The n represents the quantity of the part, the X is the multiplication symbol, and the y represents the reference number.

For example, in an illustration, the reference number 2X 37 means that two of the parts identified by reference number 37 are indicated.

# Contents

Description	Page	Description	Page
Concrete Breaker	..... 3	Attachments and Accessories List	..... 5
Power Head Assembly	..... 4		

## Part Description Abbreviations

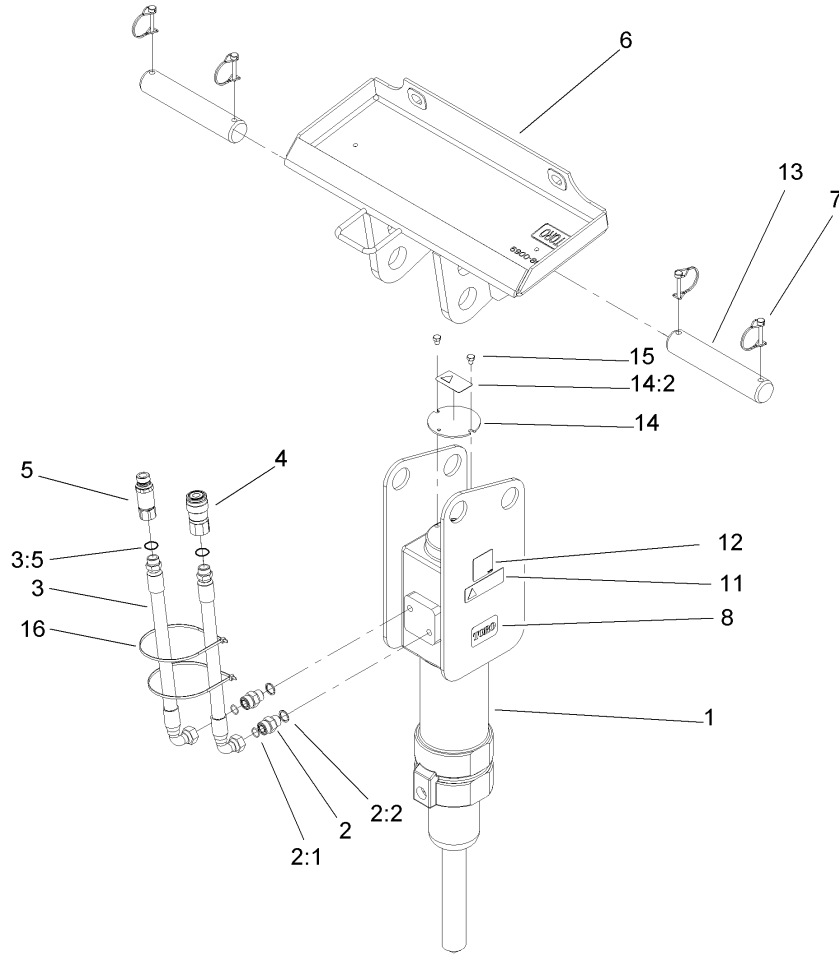
Part descriptions in this catalog may include the following abbreviations.

AR. .... as required	INC. .... incorporated
ASM. .... assembly	LH. .... left hand
BBC. .... blade brake clutch	NI. .... nylon insert
CARR. .... carriage	NPTF. .... national pipe thread fine
DEG. .... degrees	PFH. .... phillips flat head
EXT. .... external	PPH. .... phillips pan head
FH. .... flat head	PPHTF. .... phillips pan head thread forming
GA. .... gauge	PRH. .... phillips round head
HF. .... hex flange	PTH. .... phillips truss head
HH. .... hex head	PTO. .... power-take-off
HHF. .... hex head flange	RH. .... right hand
HHFTF. .... hex head flange thread forming	ROPS. .... roll-over-protection-system
HJ. .... hex jam	SFH. .... slotted fillister head
HLH. .... hex lag head	SHH. .... slotted hex head
HOC. .... height-of-cut	SHWH. .... slotted hex washer head
HSBH. .... hex socket button head	SPH. .... slotted pan head
HSFH. .... hex socket flat head	SQH. .... square head
HSH. .... hex socket head	SRH. .... slotted round head
HWH. .... hex washer head	STD. .... standard
HWHTF. .... hex washer head thread forming	TAP. .... self tapping
HYD. .... hydraulic	TTH. .... torx truss head

## Footnotes

❶ Not illustrated

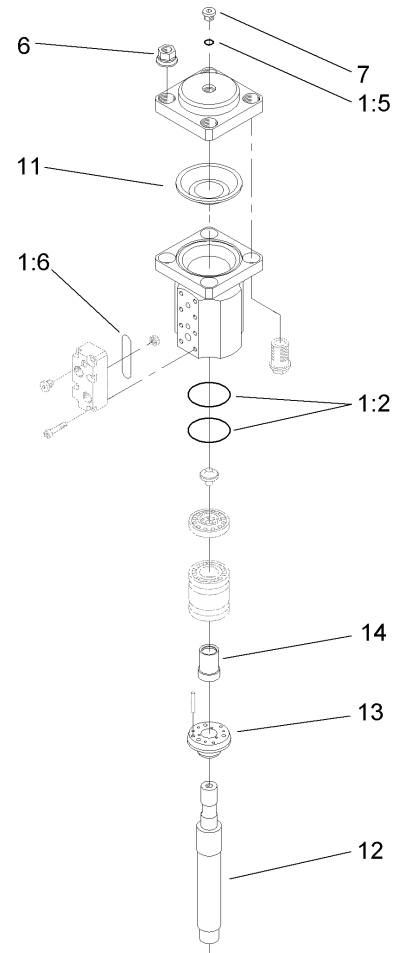
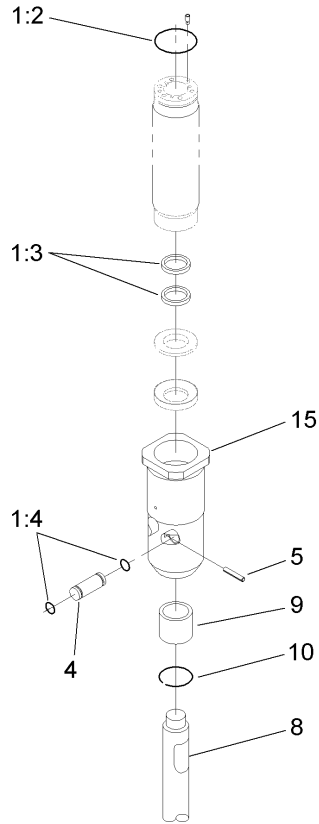
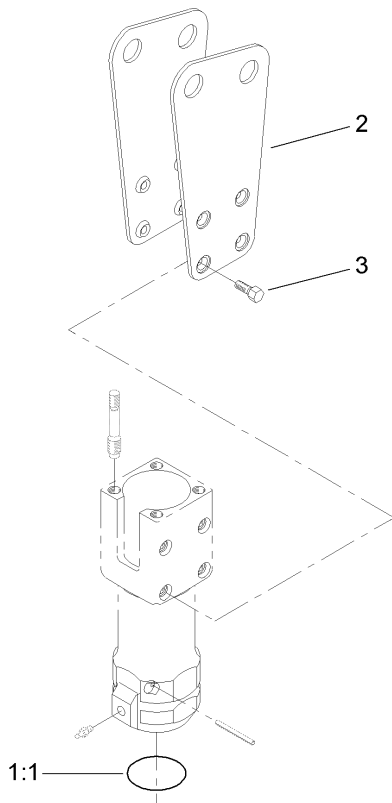
❷ Not serviced separately



## Concrete Breaker

Ref	Part No.	Qty.	Description
②1		1	Power Head ASM
2	104-6145	2	Fitting-Straight
2:1	237-65	1	O-Ring
2:2	106-7640	1	O-Ring
3	104-2034	2	Hose-Hydraulic
②3:4		1	Coupler-Face, Flush
3:5	237-80	1	O-Ring
4	104-6134	1	Coupler-Face, Flush
①4:1	105-8396	1	Seal Kit
5	100-4701	1	Nipple-Connect, Pressure
①5:1	100-6120	1	Seal Kit
6	104-6142	1	Quick Attach Breaker ASM
7	100-1663	4	Pin-Hitch
8	92-7981	2	Decal
11	104-6150	2	Decal-Warning
12	104-6151	1	Decal-Grease
13	104-6146	2	Pin-Breaker
14	106-7664	1	Plate-Cover
14:2	106-7665	1	Decal-Warning
15	33114-010	2	Screw-HH
16	3290-379	2	Tie-Cable

Parts not called out  
are not serviced separately



## Power Head Assembly

Ref	Part No.	Qty.	Description
1	106-7656	1	Kit-Seal
② 1:1		1	O-Ring
② 1:2		3	O-Ring
② 1:3		2	U-Joint
② 1:4		4	O-Ring
1:5	106-7668	1	Oring-Plug, Accumulator
② 1:6		1	O-Ring
2	106-7657	2	Plate-Side
3	106-7658	8	Screw-Breaker
4	106-7659	2	Axle-Retaining
5	106-7660	2	Pin-Elastic
6	106-7661	4	Nut-Locking
7	106-7662	1	Plug-Inflating
8	106-7666	1	Tool-Moil
9	106-7669	1	Insert-Breaker
10	106-7670	1	Insert-Ring, Breaker
11	106-7671	1	Diaphragm-Breaker
12	106-7672	1	Piston-Breaker
13	106-7673	1	Adapter-Guide
14	106-7674	1	Distributor-Breaker
15	110-0086	1	Housing-Chuck

Ref	Part No.	Qty.	Description

# Attachments and Accessories

## For 23135 - Concrete Breaker, Compact Utility Loaders

<b>Product Name</b>	<b>Model/Part</b>
Helmet-Face Shield .....	100-4143
Tool-Chisel .....	106-7667
Tool-Asphalt .....	106-7684
Tool-Tamper .....	106-7685
Hydraulic Relief Valve Kit .....	99-4360

# NOTES

# NOTES

