



Power Box Rake Compact Utility Loaders

Model No. 22425 - 240000001 and up.

Parts Catalog

Ordering Replacement Parts

To order replacement parts, please supply the part number, the quantity, and the description of each part desired.

Understanding Reference Numbers

Each identified part in an illustration has a reference number. The reference number for a part also appears in the parts list, along with other information about the part.

This catalog uses two special reference number formats, one to indicate parts in a service assembly and another to indicate the quantity of a given part in an illustration.

Service Assembly Reference Numbers

Parts in service assemblies have reference numbers in the form a:b. The a represents the reference number of the entire service assembly and the b represents a sequential number unique to each part within the service assembly.

For example, a wheel assembly might be identified by reference number 6, the tire by 6:1, the valve by 6:2, and the wheel by 6:3. When you order the assembly identified by reference number 6, you receive all parts identified by reference numbers 6:1, 6:2, and 6:3. However, you may also order any part individually. Reference numbers of this type appear in illustrations and in part lists.

Reference Numbers Indicating Quantity

In an illustration, if a reference number indicates more than one part, the reference number has the form nX y. The n represents the quantity of the part, the X is the multiplication symbol, and the y represents the reference number.

For example, in an illustration, the reference number 2X 37 means that two of the parts identified by reference number 37 are indicated.

Contents

| Description | Page | Description | Page |
|------------------------------------|---------|---------------------------|---------|
| Frame Assembly | 3 | Drive and Roller Assembly | 5 |
| Castor Wheel Assembly No. 107-9410 | 4 | Mounting Assembly | 7 |

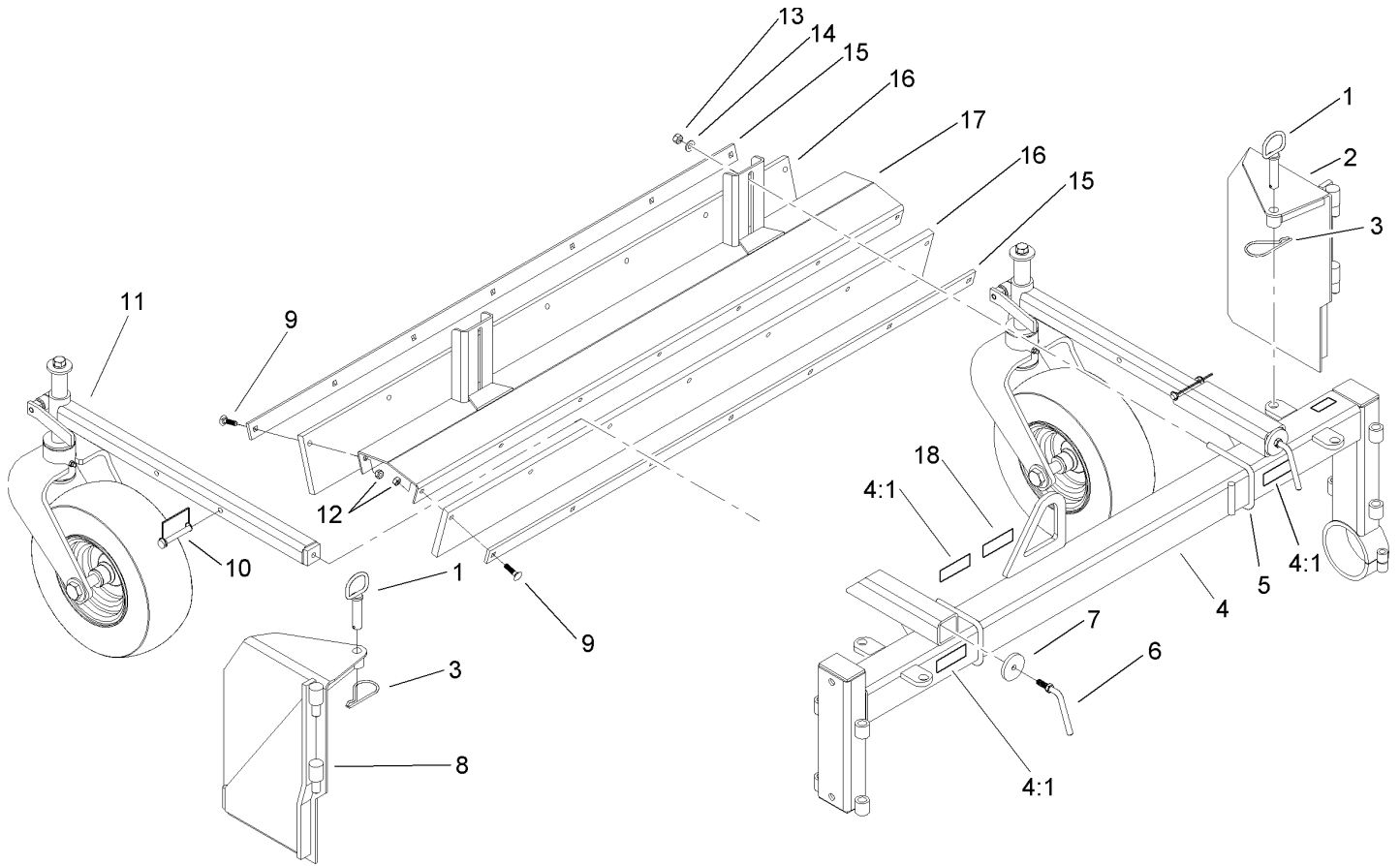
Part Description Abbreviations

Part descriptions in this catalog may include the following abbreviations.

| | |
|--|--|
| AR. as required | INC. incorporated |
| ASM. assembly | LH. left hand |
| BBC. blade brake clutch | NI. nylon insert |
| CARR. carriage | NPTF. national pipe thread fine |
| DEG. degrees | PFH. phillips flat head |
| EXT. external | PPH. phillips pan head |
| FH. flat head | PPHTF. phillips pan head thread forming |
| GA. gauge | PRH. phillips round head |
| HF. hex flange | PTH. phillips truss head |
| HH. hex head | PTO. power-take-off |
| HHF. hex head flange | RH. right hand |
| HHFTF. hex head flange thread forming | ROPS. roll-over-protection-system |
| HJ. hex jam | SFH. slotted fillister head |
| HLH. hex lag head | SHH. slotted hex head |
| HOC. height-of-cut | SHWH. slotted hex washer head |
| HSBH. hex socket button head | SPH. slotted pan head |
| HSFH. hex socket flat head | SQH. square head |
| HSH. hex socket head | SRH. slotted round head |
| HWH. hex washer head | STD. standard |
| HWHTF. hex washer head thread forming | TAP. self tapping |
| HYD. hydraulic | TTH. torx truss head |

Footnotes

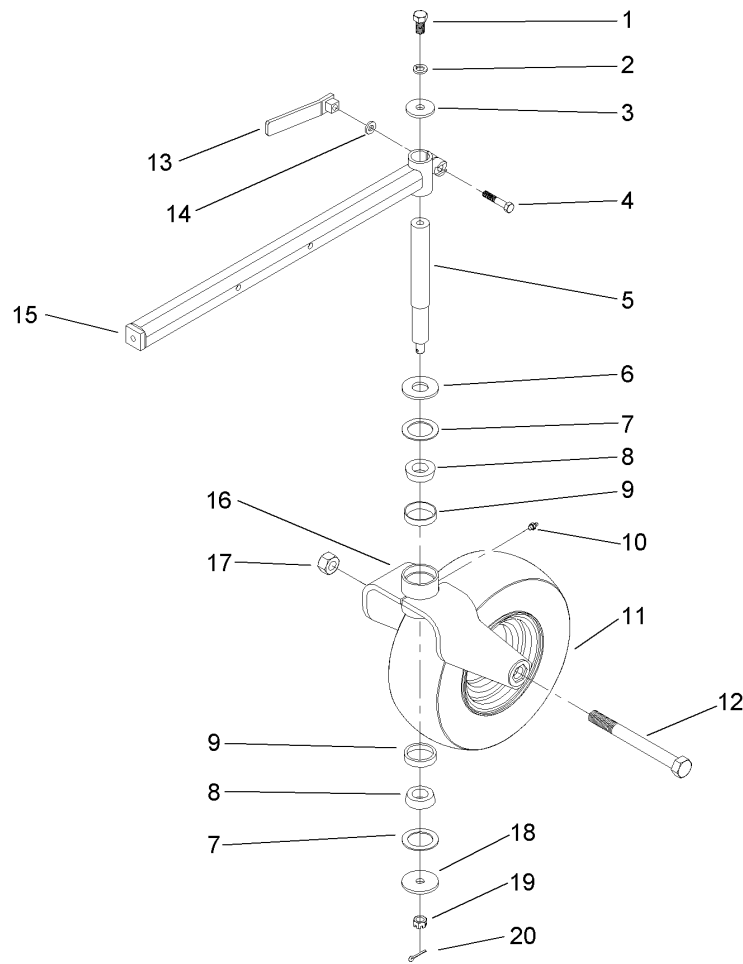
- Not illustrated



Frame Assembly

| Ref | Part No. | Qty. | Description |
|-----|----------|------|--------------------|
| 1 | 107-9461 | 2 | Pin Assembly |
| 2 | 107-9405 | 1 | Bracket-Gate, RH |
| 3 | 92-2762 | 2 | Pin-Hair |
| 4 | 107-9402 | 1 | Frame-Main, Rake |
| 4:1 | 93-7321 | 3 | Decal-Danger |
| 5 | 107-9421 | 2 | U-Bolt |
| 6 | 107-9422 | 2 | Handle-Arm, Castor |
| 7 | 107-9463 | 2 | Washer-Flat |
| 8 | 107-9406 | 1 | Bracket-Gate, LH |
| 9 | 3230-3 | 14 | Screw-CARR |
| 10 | 93-4696 | 2 | Pin-Hitch |
| 11 | 107-9410 | 2 | Castor Wheel ASM |
| 12 | 32152-1 | 14 | Nut-Lock, Cone |
| 13 | 3296-39 | 4 | Nut-Lock, NI |
| 14 | 100-4852 | 4 | Washer-Hardened |
| 15 | 107-9409 | 2 | Strap-Barrier |
| 16 | 107-9408 | 2 | Barrier-Rake |
| 17 | 107-9407 | 1 | Mount-Barrier |
| 18 | 71-0600 | 1 | Decal-Logo, Toro |

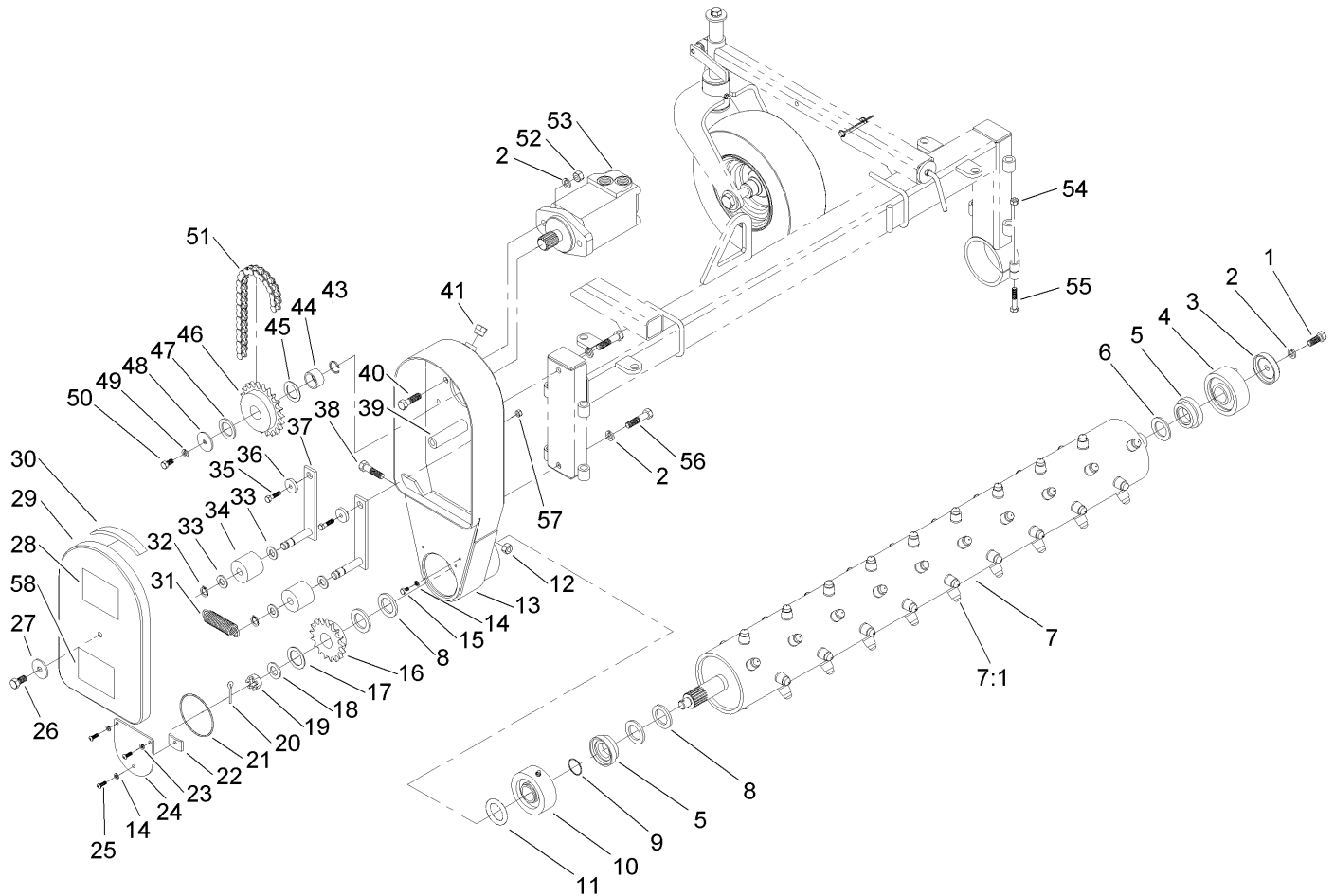
| | | | |
|--|--|--|--|
| | | | |
| | | | |
| | | | |
| | | | |



Castor Wheel Assembly No. 107-9410

| Ref | Part No. | Qty. | Description |
|-----|----------|------|------------------------|
| 1 | 325-4 | 1 | Screw-HH |
| 2 | 3253-7 | 1 | Washer-Lock |
| 3 | 84-1560 | 1 | Washer-Thrust |
| 4 | 3211-9 | 1 | Screw-HH |
| 5 | 107-9432 | 1 | Shaft-Castor |
| 6 | 104-6126 | 1 | Washer-Flat |
| 7 | 107-9459 | 2 | Washer-Felt |
| 8 | 254-94 | 2 | Bearing-Cone, Tapered |
| 9 | 254-72 | 2 | Bearing-Cup, Tapered |
| 10 | 302-5 | 1 | Fitting-Grease |
| 11 | 107-9433 | 1 | Wheel And Tire ASM |
| 12 | 107-9460 | 1 | Bolt-HH |
| 13 | 107-9434 | 1 | Handle-Castor |
| 14 | 52-5980 | 1 | Spacer-Pivot Arm, Rear |
| 15 | 107-9435 | 1 | Arm-Support, Castor |
| 16 | 107-9436 | 1 | Fork-Castor |
| 17 | 3253-9 | 1 | Washer-Lock |
| 18 | 107-9462 | 1 | Washer-Flat |
| 19 | 3297-3 | 1 | Nut-Hex, Slotted |
| 20 | 700170 | 1 | Pin-Cotter |

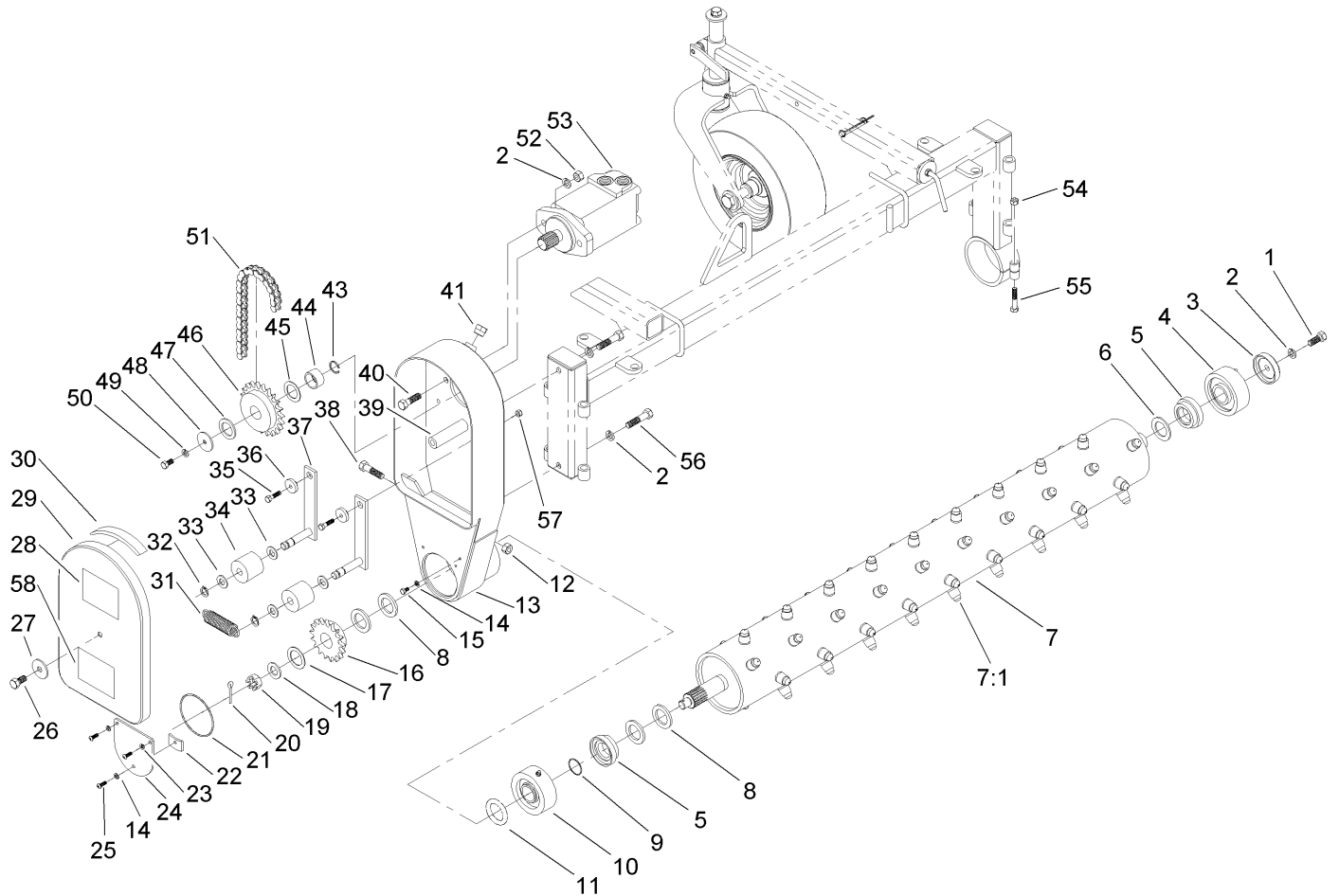
| | | | |
|--|--|--|--|
| | | | |
|--|--|--|--|



Drive and Roller Assembly

| Ref | Part No. | Qty. | Description |
|-----|----------|------|-----------------------|
| 1 | 3213-2 | 1 | Screw-HH |
| 2 | 3253-7 | 5 | Washer-Lock |
| 3 | 107-9415 | 1 | Cap-Bearing |
| 4 | 107-9443 | 1 | Idle Bearing ASM |
| 5 | 107-9444 | 2 | Collar-Bearing |
| 6 | 107-9450 | 1 | Bushing-Machined |
| 7 | 107-9403 | 1 | Roller-Tooth, Carbide |
| 7:1 | 108-5559 | 76 | Tooth-Rake |
| 8 | 107-9454 | 4 | Spacer-Flat |
| 9 | 107-9455 | 1 | O-Ring |
| 10 | 107-9442 | 1 | Drive Bearing ASM |
| 11 | 107-9448 | 1 | O-Ring |
| 12 | 98-8088 | 1 | Nut-Lock |
| 13 | 107-9404 | 1 | Case-Chain |
| 14 | 107-9468 | 2 | Washer-Oring |
| 15 | 321-2 | 1 | Screw-HH |
| 16 | 107-9416 | 1 | Sprocket-17 Tooth |
| 17 | 107-9451 | 1 | Bushing-Machined |
| 18 | 113440 | 1 | Washer-Wheel |
| 19 | 32136-5 | 1 | Nut-Hex, Slotted |
| 20 | 3272-19 | 1 | Pin-Cotter |
| 21 | 107-9447 | 1 | O-Ring |
| 22 | 107-9414 | 1 | Tab-Cover |
| 23 | 3253-3 | 2 | Washer-Lock |

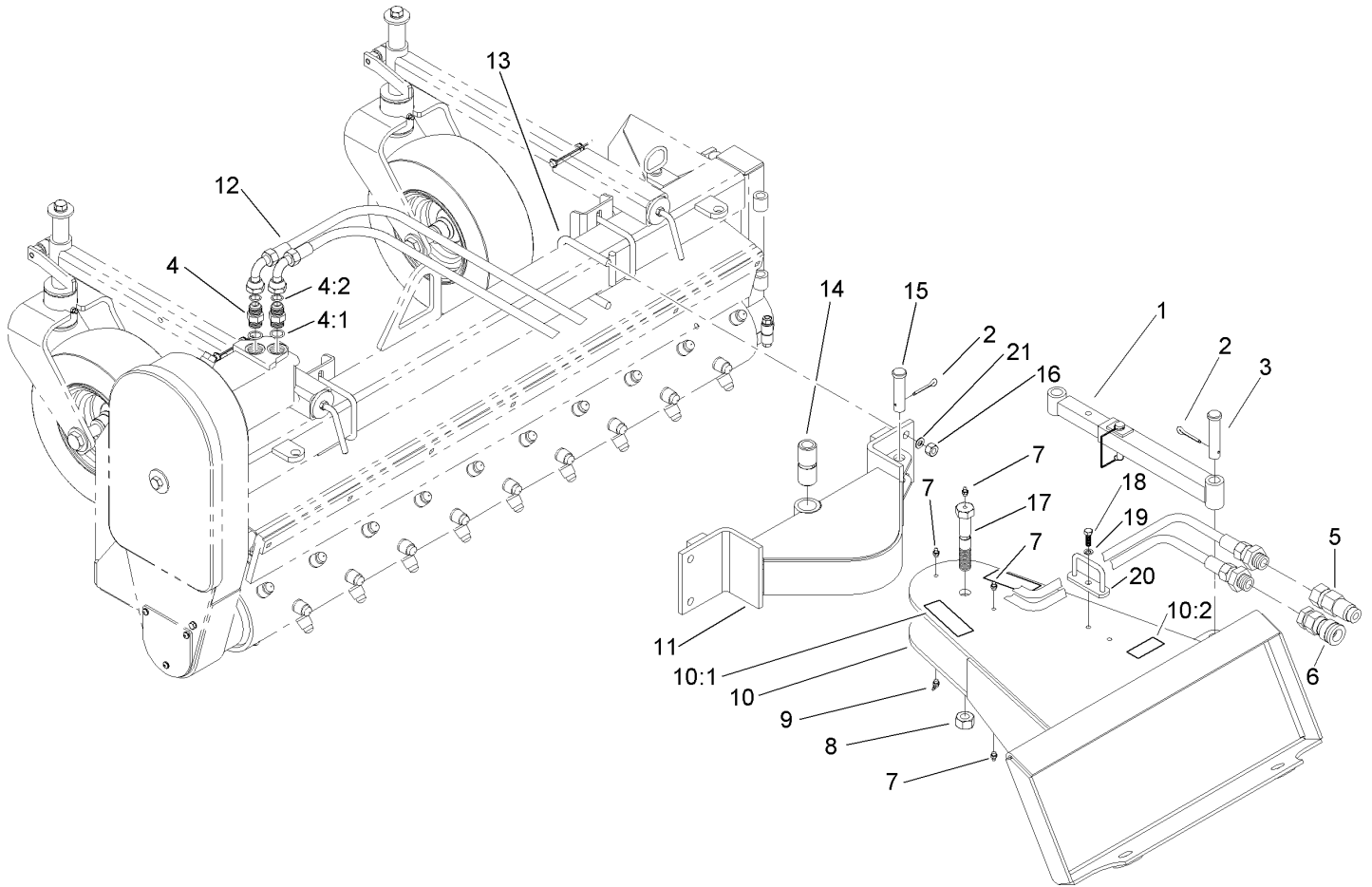
| Ref | Part No. | Qty. | Description |
|-----|----------|------|---------------------|
| 24 | 107-9413 | 1 | Cover-Lower, Chain |
| 25 | 3274-69 | 3 | Screw-HSBH |
| 26 | 325-4 | 1 | Screw-HH |
| 27 | 84-1560 | 1 | Washer-Thrust |
| 28 | 62-5550 | 1 | Decal |
| 29 | 107-9411 | 1 | Cover-Chain |
| 30 | 107-9412 | 1 | Seal-Cover |
| 31 | 107-9446 | 1 | Spring-Extension |
| 32 | 32151-62 | 2 | Ring-Retaining |
| 33 | 3256-15 | 2 | Washer-Flat |
| 34 | 107-9419 | 2 | Roller-Tensioner |
| 35 | 322-6 | 2 | Screw-HH |
| 36 | 107-9445 | 2 | Bushing-Pivot |
| 37 | 107-9418 | 2 | Arm-Tensioner |
| 38 | 3213-5 | 1 | Screw-HH |
| 39 | 107-9420 | 1 | Rod-Cover, Spacer |
| 40 | 325-7 | 2 | Screw-HH |
| 41 | 107-9449 | 1 | Plug-Breather |
| 43 | 100-6597 | 1 | Ring-Snap, External |
| 44 | 107-9423 | 1 | Collar-Sprocket |
| 45 | 107-9453 | 1 | Bushing-Machined |
| 46 | 107-9417 | 1 | Sprocket-22 Tooth |
| 47 | 107-9452 | 1 | Bushing-Machined |
| 48 | 95-1823 | 1 | Washer |



Drive and Roller Assembly (continued)

| Ref | Part No. | Qty. | Description |
|-------|----------|------|---------------------|
| 49 | 3253-21 | 2 | Washer-Lock |
| 50 | 323-6 | 1 | Screw-HH |
| 51 | 107-9438 | 1 | Chain-Roller |
| 52 | 3217-9 | 2 | Nut-Hex |
| 53 | 107-9437 | 1 | Hydraulic Motor ASM |
| ●53:1 | 100-1447 | 1 | Seal Kit |
| 54 | 3217-7 | 1 | Nut-Hex |
| 55 | 323-10 | 1 | Screw-HH |
| 56 | 325-12 | 2 | Screw-HH |
| 57 | 32152-1 | 2 | Nut-Lock, Cone |
| 58 | 107-9464 | 1 | Decal-Rake, Box |

| | | | |
|--|--|--|--|
| | | | |
| | | | |
| | | | |
| | | | |



Mounting Assembly

| Ref | Part No. | Qty. | Description |
|------|----------|------|--------------------------|
| 1 | 107-9427 | 1 | Bar-Adjustment |
| 2 | 3272-19 | 2 | Pin-Cotter |
| 3 | 107-9457 | 1 | Pin-Clevis |
| 4 | 340-6 | 2 | Fitting-HYD, Straight |
| 4:1 | 237-30 | 1 | O-Ring |
| 4:2 | 237-80 | 1 | O-Ring |
| 5 | 100-4701 | 1 | Nipple-Connect, Pressure |
| 5:1 | 100-6120 | 1 | Seal Kit |
| 6 | 104-6134 | 1 | Coupler-Face, Flush |
| 6:1 | 105-8396 | 1 | Seal Kit |
| 7 | 302-5 | 3 | Fitting-Grease |
| 8 | 97-1208 | 1 | Locknut-Stover |
| 9 | 302-11 | 1 | Fitting-Lube, 45 DEG |
| 10 | 107-9426 | 1 | Attachment Mount ASM |
| 10:1 | 93-9367 | 2 | Decal-Warning, Symbols |
| 10:2 | 100-4708 | 1 | Decal-Warning |
| 11 | 107-9425 | 1 | Mount-Pivot |
| 12 | 107-9439 | 2 | HYD Hose ASM |
| 13 | 107-9458 | 2 | U-Bolt |
| 14 | 107-9428 | 1 | Bushing-Pivot |
| 15 | 107-9456 | 1 | Pin-Clevis |
| 16 | 3217-9 | 4 | Nut-Hex |
| 17 | 107-9429 | 1 | Bolt-Pivot |
| 18 | 322-5 | 1 | Screw-HH |

| Ref | Part No. | Qty. | Description |
|-----|----------|------|-------------|
| 19 | 3253-4 | 1 | Washer-Lock |
| 20 | 107-9431 | 1 | Loop-Hose |
| 21 | 3253-7 | 4 | Washer-Lock |

