



# DFS Bagger Adapter Kit

## for Mounting 2004 and Before Baggers on 2005 and After Z500 Series Z Masters

Part No. 110-0351

### Installation Instructions

**Note:** Use the existing hardware that came with the bagger to install the bagger mounting bracket in Step 3.

## Setup

**Note:** Determine the left and right sides of the machine from the normal operating position.

### Loose Parts

**Note:** Use the chart below to verify all parts have been shipped.

Step	Description	Qty.	Use
1	Side bracket—right	1	Installing bagger mounting brackets onto the machine
	Side bracket—left	1	
	Bolt, 3/8 x 1-1/2 inch	8	
	Flange Nut, 3/8 inch	8	
	Stiffener bracket	2	
	Curved washer	8	
2	No parts needed		Tightening all mounting bolts



- 2 Stiffener bracket
- 8 Bolts, 3/8 x 3/4 inch
- 8 Curved washer

If you have a **liquid cooled machine**, go to page 3 for Installing the Bagger Mounting Bracket onto a Liquid Cooled Machine.

If you have an **air cooled machine**, use the following instructions for Installing the Bagger Mounting Bracket onto an Air Cooled Machine.

#### Parts needed for this step:

- 1 Bagger mounting bracket
- 1 Side bracket—right
- 1 Side bracket—left
- 4 Long frame spacer—only two are needed for air cooled machines
- 2 Short frame spacer
- 12 Bolt, 3/8 x 1-1/2 inch
- 4 Bolt, 3/8 x 1-1/4 inch
- 26 Flange Nut, 3/8 inch

## Installing the Bagger Mounting Bracket onto an Air Cooled Machine

**Important** Do not tighten any bolts until both side brackets and bagger mounting bracket are fit loose on the machine.

Refer to Tightening the Mounting Bolts, on page 4, for the correct procedure to tighten the bolts.

## Installing the Bagger Mounting Bracket to the Side Brackets (Air Cooled)

**Important** When installing the bagger bracket for an air cooled machine, use only 2 long frame spacers; 1 per each side (Fig. 1).

1. Install the side brackets to the bagger mounting bracket (Fig. 1).
2. In the top two holes, install 2 bolts (3/8 x 1-1/2 inch), 2 flange nuts (3/8 inch) one long frame spacer, and one short frame spacer (Fig. 1).

**Note:** Make sure the long frame spacers are installed as shown in figure 1.

3. In the bottom hole, install a bolt (3/8 x 1-1/4 inch) and a flange nut (3/8 inch) (Fig. 1).
4. Install a bracket stiffener to the side bracket and bagger mounting bracket. Use 4 bolts (3/8 x 3/4 inch) and 4 flange nuts (3/8 inch) (Fig. 1).
5. Repeat the previous steps for the opposite side (Fig. 1).

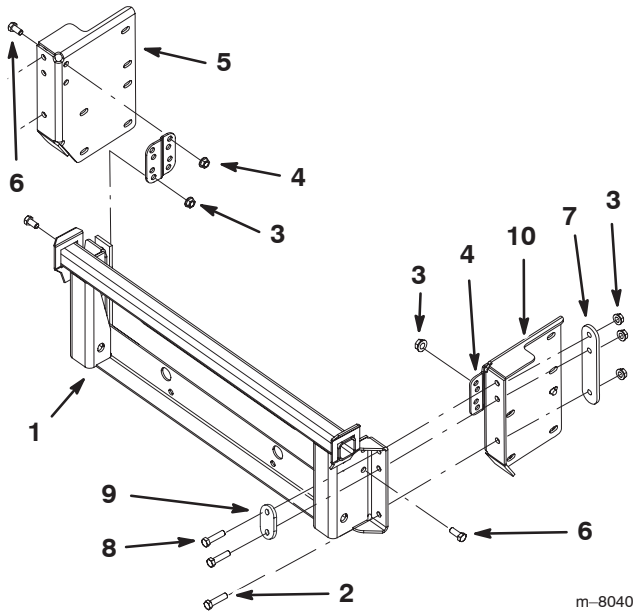


Figure 1

- |                            |                           |
|----------------------------|---------------------------|
| 1. Bagger mounting bracket | 6. Bolt, 3/8 x 3/4 inch   |
| 2. Bolt, 3/8 x 1-1/4 inch  | 7. Long frame spacer      |
| 3. Flange nut, 3/8 inch    | 8. Bolt, 3/8 x 1-1/2 inch |
| 4. Bracket stiffener       | 9. Short frame spacer     |
| 5. Left side bracket       | 10. Right side bracket    |

## Installing the Side Brackets to an Air Cooled Machine

**Important** Do not tighten any bolts until both side brackets and bagger mounting bracket are fit loose on the machine.

**Important** Install one side at a time.

1. Remove the bolts, nuts and washers holding the rollbar to one side of the machine. Discard the bolts, nuts and washers (Fig. 2).
2. Install the bagger side plate and the roll bar section to the side of the machine using 4 bolts (3/8 x 1-1/2 inch), 4 curved washer (3/8 inch) and 4 flange nuts (3/8 inch) (Fig. 2).
3. Repeat the previous step on the opposite side of the machine.

**Note:** Make sure the curved washers are installed as shown in Figure 2.

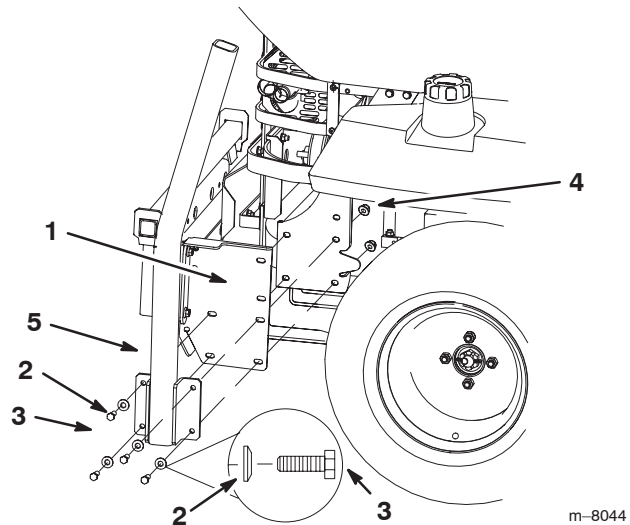


Figure 2

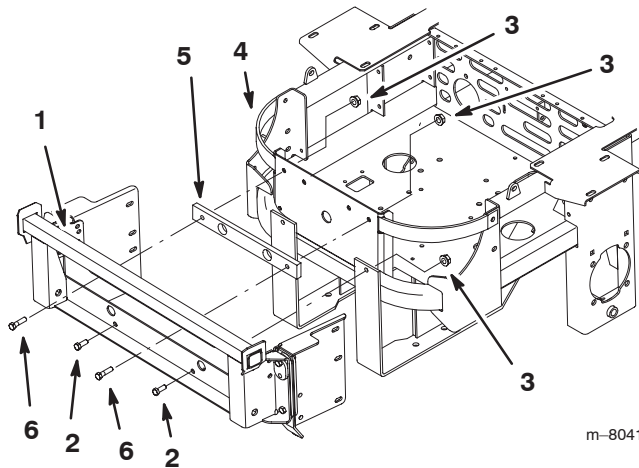
- |                            |                         |
|----------------------------|-------------------------|
| 1. Side bracket            | 4. Flange nut, 3/8 inch |
| 2. Curved washer, 3/8 inch | 5. ROPS                 |
| 3. Bolt, 3/8 x 1-1/2 inch  |                         |

## Installing the Bagger Mounting Bracket onto an Air Cooled Machine

**Important** When installing the bagger onto an air cooled machine, use the air cooled spacer (Fig. 3).

1. Install the bagger mounting bracket to the rear frame of the machine (Fig. 3).

2. In the top two holes, install 2 bolts (3/8 x 1-3/4 inch), 2 flange nuts (3/8 in.) and the air cooled frame spacer (Fig. 3).
3. In the bottom two holes, install 2 bolts (3/8 x 1-1/4 inch) and 2 flange nuts (3/8 in.) (Fig. 3).



**Figure 3**

- |                            |                            |
|----------------------------|----------------------------|
| 1. Bagger mounting bracket | 4. Bumper                  |
| 2. Bolt, 3/8 x 1-1/4 inch  | 5. Air cooled frame spacer |
| 3. Flange nut, 3/8 inch    | 6. Bolt, 3/8 x 1-3/4 inch  |

## Installing the Bagger Mounting Bracket onto a Liquid Cooled Machine

**Important** Do not tighten any bolts until both side brackets and bagger mounting bracket are fit loose on the machine.

Refer to Tightening the Mounting Bolts, on page 4, for the correct procedure to tighten the bolts.

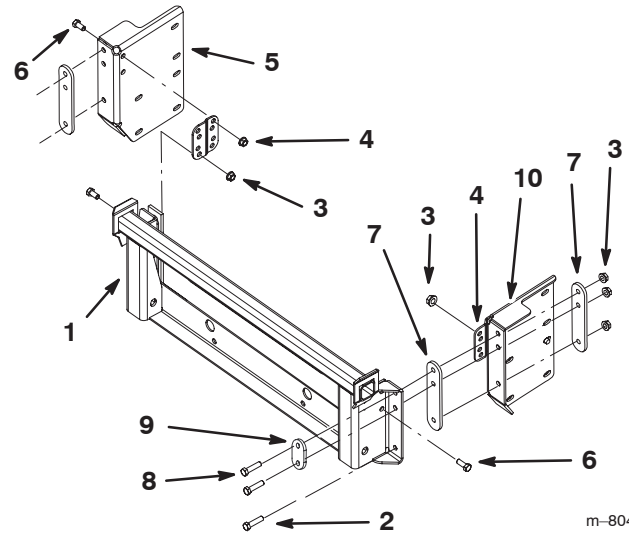
### Installing the Bagger Mounting Bracket to the Side Brackets (Liquid Cooled)

**Important** When installing the bagger onto a liquid cooled machine, the rear bumper plate must be removed. Use 4 long frame spacers for this installation, 2 per each side (Fig. 4).

1. Install the side brackets to the bagger mounting bracket (Fig. 4).
2. In the top two holes, install 2 bolts (3/8 x 1-1/2 inch), 2 flange nuts (3/8 in.), 2 long frame spacers, and one short frame spacer (Fig. 4).

**Note:** Make sure the long frame spacers are installed as shown in figure 4.

3. In the bottom hole, install a bolt (3/8 x 1-1/4 inch) and a flange nut (3/8 in.) (Fig. 4).
4. Install a bracket stiffener to the side bracket and bagger mounting bracket. Use 4 bolts (3/8 x 3/4 inch) and 4 flange nuts (3/8 in.) (Fig. 4).
5. Repeat the previous steps for the opposite side (Fig. 4).



**Figure 4**

- |                            |                           |
|----------------------------|---------------------------|
| 1. Bagger mounting bracket | 6. Bolt, 3/8 x 3/4 inch   |
| 2. Bolt, 3/8 x 1-1/4 inch  | 7. Long frame spacer      |
| 3. Flange nut, 3/8 inch    | 8. Bolt, 3/8 x 1-1/2 inch |
| 4. Bracket stiffener       | 9. Short frame spacer     |
| 5. Left side bracket       | 10. Right side bracket    |

## Installing the Side Brackets to a Liquid Cooled Machine

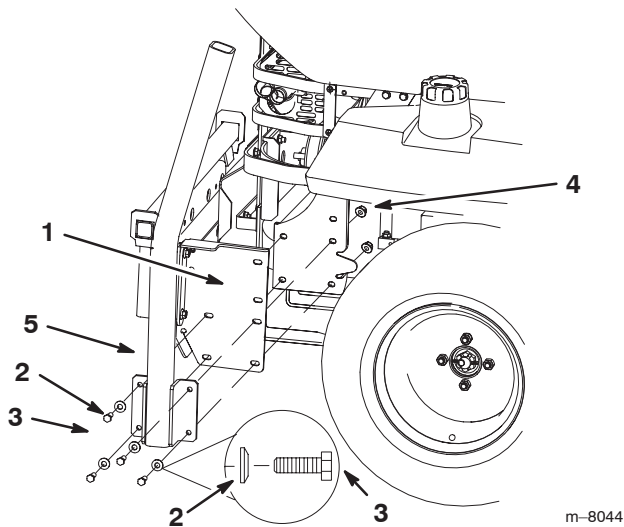
**Important** Do not tighten any bolts until both side brackets and bagger mounting bracket are fit loose on the machine.

**Important** Install one side at a time.

1. Remove the bolts, nuts and washers holding the rollbar to one side of the machine. Discard the bolts, nuts and washers (Fig. 5).
2. Install the bagger side plate and the roll bar section to the side of the machine using 4 bolts (3/8 x 1-1/2 inch), 4 curved washer (3/8 inch) and 4 flange nuts (3/8 inch) (Fig. 5).
3. Repeat the previous step on the opposite side of the machine.

**Note:** Make sure the curved washers are installed as shown in Figure 5.

**Step**  
**2**

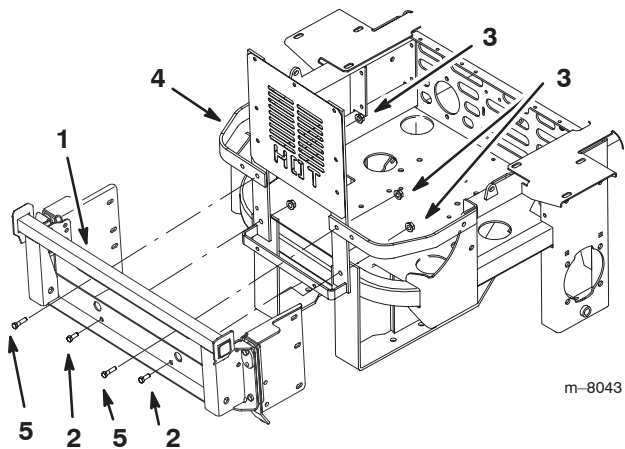


**Figure 5**

- |                            |                         |
|----------------------------|-------------------------|
| 1. Side bracket            | 4. Flange nut, 3/8 inch |
| 2. Curved washer, 3/8 inch | 5. ROPS                 |
| 3. Bolt, 3/8 x 1-1/2 inch  |                         |

**Installing the Bagger Mounting Bracket onto a Liquid Cooled Machine**

1. Install the bagger mounting bracket to the rear frame of the machine (Fig. 6).
2. In the top two holes, install 2 bolts (3/8 x 1-3/4 inch) and 2 flange nuts (3/8 inch) (Fig. 6).
3. In the bottom two holes, install 2 bolts (3/8 x 1-1/4 inch) and 2 flange nuts (3/8 inch) (Fig. 6).



**Figure 6**

- |                            |                           |
|----------------------------|---------------------------|
| 1. Bagger mounting bracket | 4. Bumper                 |
| 2. Bolt, 3/8 x 1-1/4 inch  | 5. Bolt, 3/8 x 1-3/4 inch |
| 3. Flange nut, 3/8 inch    |                           |

**No parts needed for this step.**

**Tightening all Mounting Bolts**

The following steps are the correct sequence to tighten the side brackets and the bagger mounting bracket.

All 3/8 inch mounting bolts need to be torqued to **35 ft-lb (48 N•m)**.

1. Tighten the bagger mounting bracket to the rear frame first (Figures 3 or 6).
2. Tighten the bagger mounting bracket to the side brackets (Figures 3 or 6).
3. Tighten the bracket stiffeners to both the side plates and the bagger mounting bracket (Figures 1 or 4).
4. Tighten the side brackets to the side of the mower (Fig. 2 or 5).
5. Lower the machine onto the drive wheels.