



## Commercial Walk-Behind Mower Fixed Deck, Pistol Grip, Gear Drive with 48in TURBO FORCE<sup>®</sup> Cutting Unit

Model No. 30688 - 260000001 and up.

### Parts Catalog

---

#### Ordering Replacement Parts

To order replacement parts, please supply the part number, the quantity, and the description of each part desired.

#### Understanding Reference Numbers

Each Identified part in an illustration has a reference number. The reference number for a part also appears in the parts list, along with other information about the part.

This catalog uses two special reference number formats, one to indicate parts in a service assembly and another to indicate the quantity of a given part in an illustration.

#### Service Assembly Reference Numbers

Parts in service assemblies have reference numbers in the form a:b. The a represents the reference number of the entire service assembly and the b represents a sequential number unique to each part within the service assembly.

For example, a wheel assembly might be identified by reference number 6, the tire by 6:1, the valve by 6:2, and the wheel by 6:3. When you order the assembly identified by reference number 6, you receive all parts identified by reference numbers 6:1, 6:2, and 6:3. However, you may also order any part individually. Reference numbers of this type appear in illustrations and in part lists.

#### Reference Numbers Indicating Quantity

In an illustration, if a reference number indicates more than one part, the reference number has the form nX y. The n represents the quantity of the part, the X is the multiplication symbol, and the y represents the reference number.

For example, in an illustration, the reference number 2X 37 means that two of the parts identified by reference number 37 are indicated.

# Contents

Description	Page	Description	Page
Engine and Fuel Tank Assembly	..... 3	Lubrication Equipment Assembly Kawasaki Model FH430V-AS25	..... 19
Transmission Drive Assembly	..... 4	Cooling Equipment Assembly Kawasaki Model FH430V-AS25	..... 20
Drive Wheel and Brake Assembly	..... 6	Electric Equipment Assembly Kawasaki Model FH430V-AS25	..... 21
Handle and Control Assembly	..... 7	Control Equipment Assembly Kawasaki Model FH430V-AS25	..... 22
Control Panel Decal Assembly No.110-6906	..... 9	Carburetor Assembly Kawasaki Model FH430V-AS25	..... 23
Deck Assembly	..... 10	Air Filter and Muffler Assembly Kawasaki Model FH430V-AS25	..... 24
Deck Decal Assembly No. 110-4909	..... 11	Fuel Tank and Fuel Valve Assembly Kawasaki Model FH430V-AS25	..... 25
Deflector Assembly No. 110-0758	..... 12	Starter Assembly Kawasaki Model FH430V-AS25	..... 26
Sheave, Spindle and Blade Assembly	..... 13	Label Assembly Kawasaki Model FH430V-AS25	..... 27
Idler Assembly	..... 14	Attachments and Accessories List	..... 28
Caster Assembly	..... 15		
Cylinder and Crankcase Assembly Kawasaki Model FH430V-AS25	..... 16		
Piston and Crankshaft Assembly Kawasaki Model FH430V-AS25	..... 17		
Valve and Camshaft Assembly Kawasaki Model FH430V-AS25	..... 18		

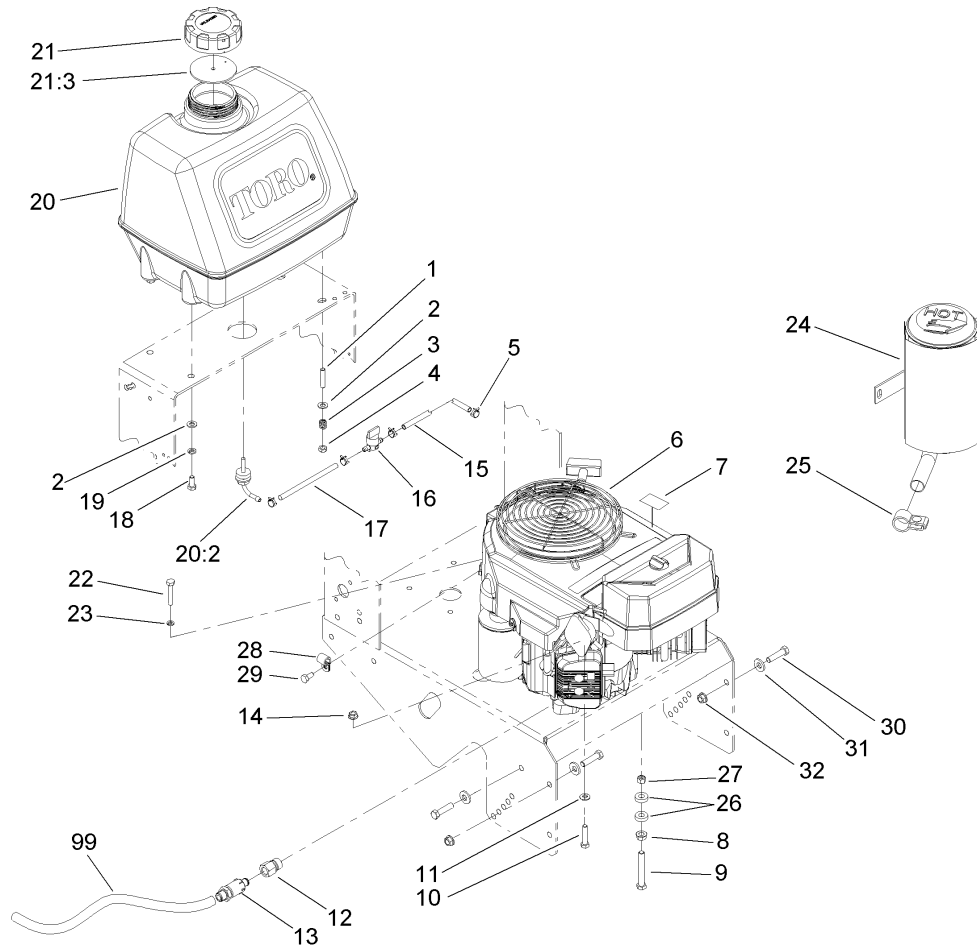
## Part Description Abbreviations

Part descriptions in this catalog may include the following abbreviations.

AR. .... as required	INC. .... incorporated
ASM. .... assembly	LH. .... left hand
BBC. .... blade brake clutch	NI. .... nylon insert
CARR. .... carriage	NPTF. .... national pipe thread fine
DEG. .... degrees	PFH. .... phillips flat head
EXT. .... external	PPH. .... phillips pan head
FH. .... flat head	PPHTF. .... phillips pan head thread forming
GA. .... gauge	PRH. .... phillips round head
HF. .... hex flange	PTH. .... phillips truss head
HH. .... hex head	PTO. .... power-take-off
HHF. .... hex head flange	RH. .... right hand
HHFTF. .... hex head flange thread forming	ROPS. .... roll-over-protection-system
HJ. .... hex jam	SFH. .... slotted fillister head
HLH. .... hex lag head	SHH. .... slotted hex head
HOC. .... height-of-cut	SHWH. .... slotted hex washer head
HSBH. .... hex socket button head	SPH. .... slotted pan head
HSFH. .... hex socket flat head	SQH. .... square head
HSH. .... hex socket head	SRH. .... slotted round head
HWH. .... hex washer head	STD. .... standard
HWHTF. .... hex washer head thread forming	TAP. .... self tapping
HYD. .... hydraulic	TTH. .... torx truss head

## Footnotes

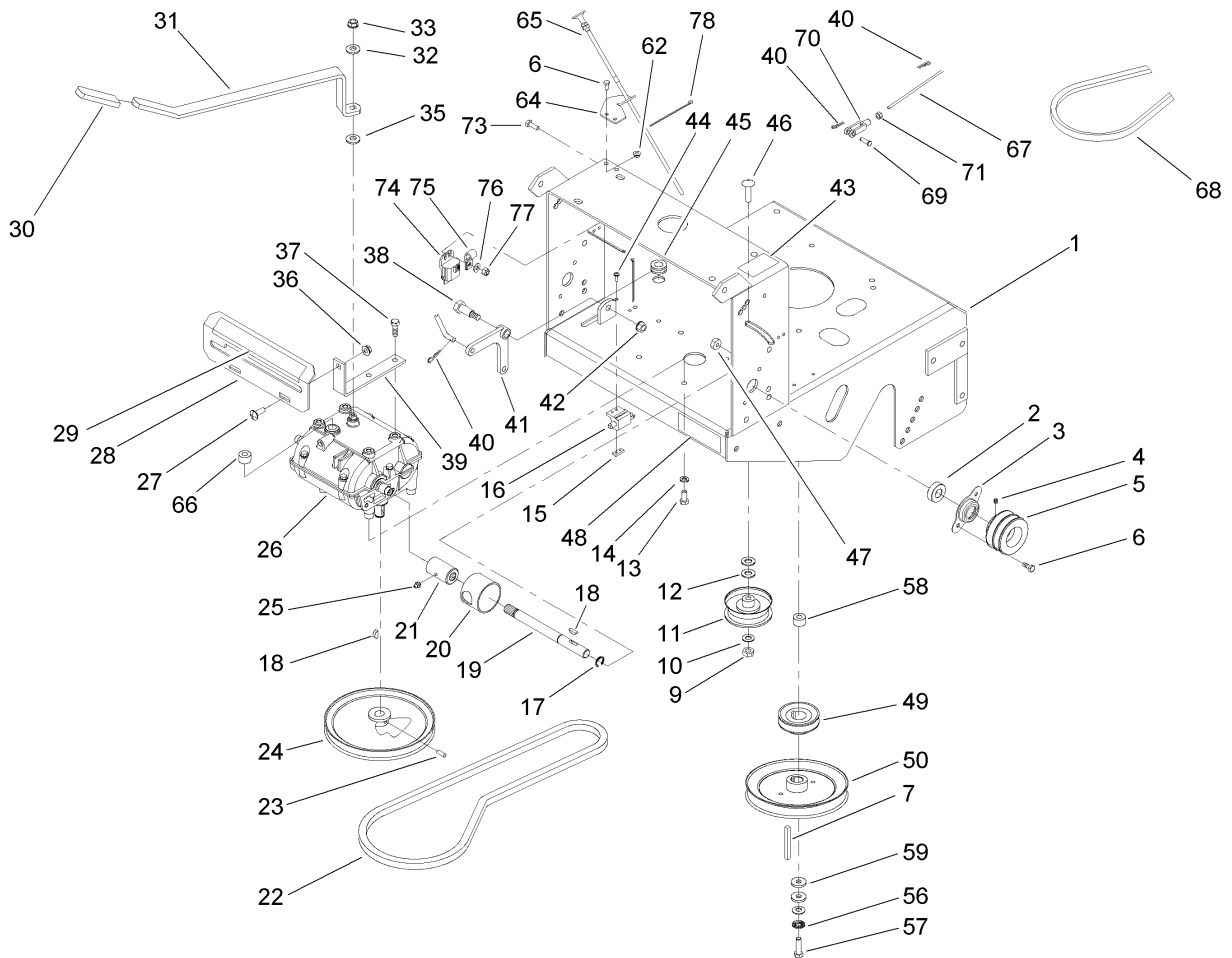
- ❶ Not illustrated
- ❷ Not serviced separately
- ❸ Obtain from your local Kawasaki dealer



## Engine and Fuel Tank Assembly

Ref	Part No.	Qty.	Description
1	1-633023	2	Stud
2	3256-23	4	Washer-Flat
3	1-633349	2	Spring-Tank, Fuel
4	3296-47	2	Nut-Lock, NI
5	1-303077	4	Clamp
6		1	Engine-Kawasaki, FH430V-As25
7	106-0699	1	Decal-Warning, Hot Surfaces
8	32128-21	1	Nut-HF
9	323-14	1	Screw-HH
10	322-7	4	Screw-HH
11	1-303334	4	Washer-Spring
12	103-1966	1	Adapter
13	92-6877	1	Valve-Drain, Oil
14	32128-20	4	Nut-HF
15	109-0293	1	Hose-Fuel
16	1-603770	1	Valve-Fuel
17	109-0306	1	Hose-Fuel
18	322-3	2	Screw-HH
19	1-805005	2	Washer-Lock
20	106-0730	1	Fuel Tank ASM
20:2	103-2605	1	Fitting-Fuel, Bulkhead
21	88-3980	1	Gas Cap ASM
21:3	88-4010	1	Gasket-Cap, Gas
22	33113-016	1	Screw-HH

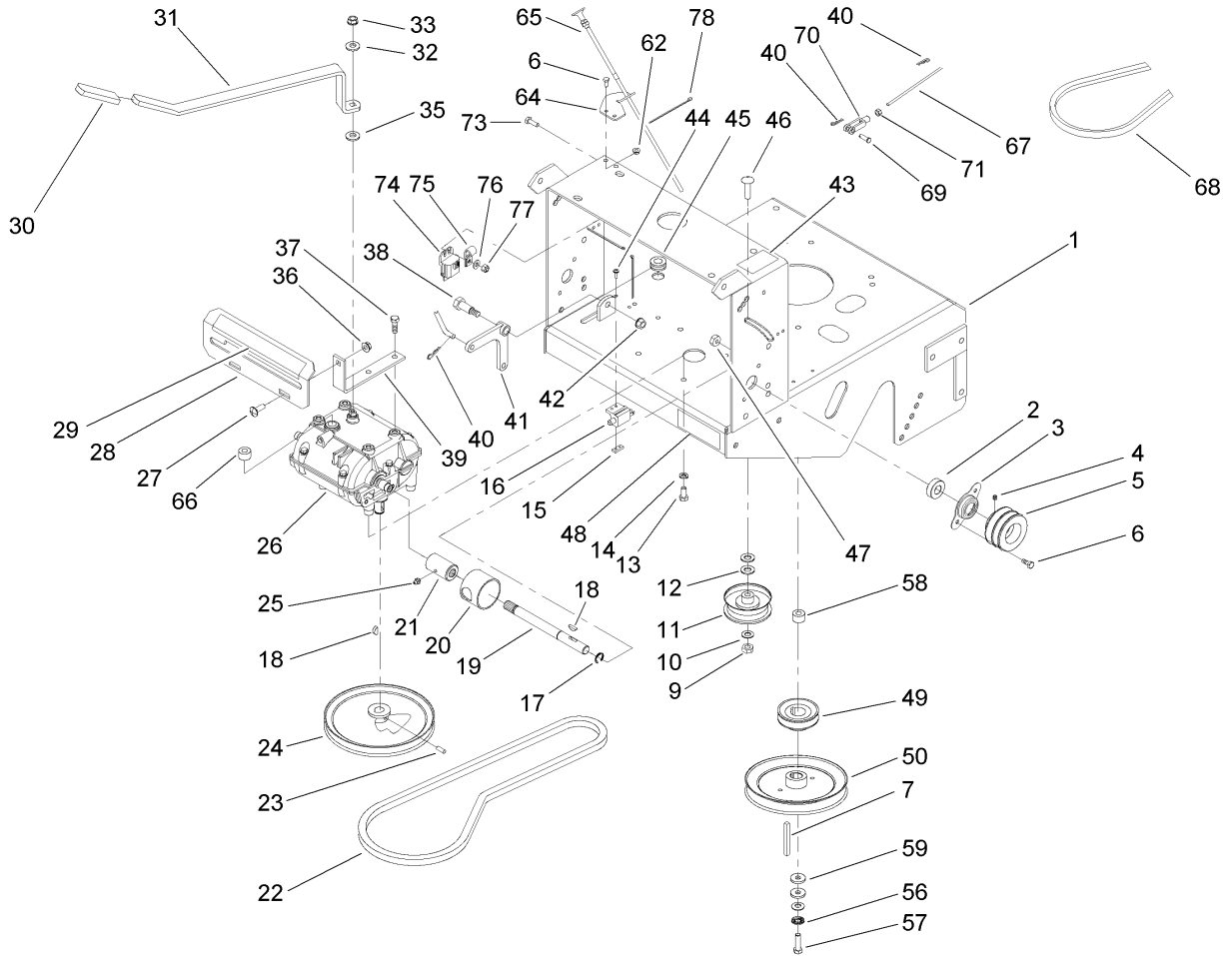
Ref	Part No.	Qty.	Description
23	1-805004	1	Washer-Lock
24	100-6467	1	Muffler
25	103-5465	1	Clamp-Muffler
26	5-0652	2	Spacer
27	3296-39	1	Nut-Lock, NI
28	1-413510	1	Clip-Loom
29	33114-016	1	Screw-HH
30	323-8	8	Screw-HH
31	98-5975	8	Washer-Belleville
32	3290-357	8	Nut-HHF, Whiz
99	103-1964	1	Hose-Drain, Oil



## Transmission Drive Assembly

Ref	Part No.	Qty.	Description
1	103-9897-01	1	Deck-Engine
2	1-323252	2	Bearing-Shaft
3	1-323254	2	Flange-Output
4	1-803310	2	Screw-Set
5	103-6511	2	Sheave-Transmission
6	321-3	6	Screw-HH
7	103-4177	1	Key-Machine
9	3296-39	1	Nut-Lock, NI
10	3256-24	1	Washer-Flat
11	1-323285	1	Idler-Drive, Transmission
12	3256-5	2	Washer-Flat
13	322-3	4	Screw-HH
14	1-805005	4	Washer-Lock
15	1-633181	1	Plate-Tapped
16	1-513051	1	Switch-Open, Normally
17	32151-62	2	Ring-Retaining
18	3257-5	3	Key-Woodruff
19	1-323502	2	Shaft-Transmission
20	51-4220	2	Guard-Coupler
21	1-323680	2	Coupler
22	1-323630	1	V-Belt
23	3245-41	2	Screw-HSH
24	1-323278	1	Sheave-Transmission
25	302-19	2	Fitting-Grease

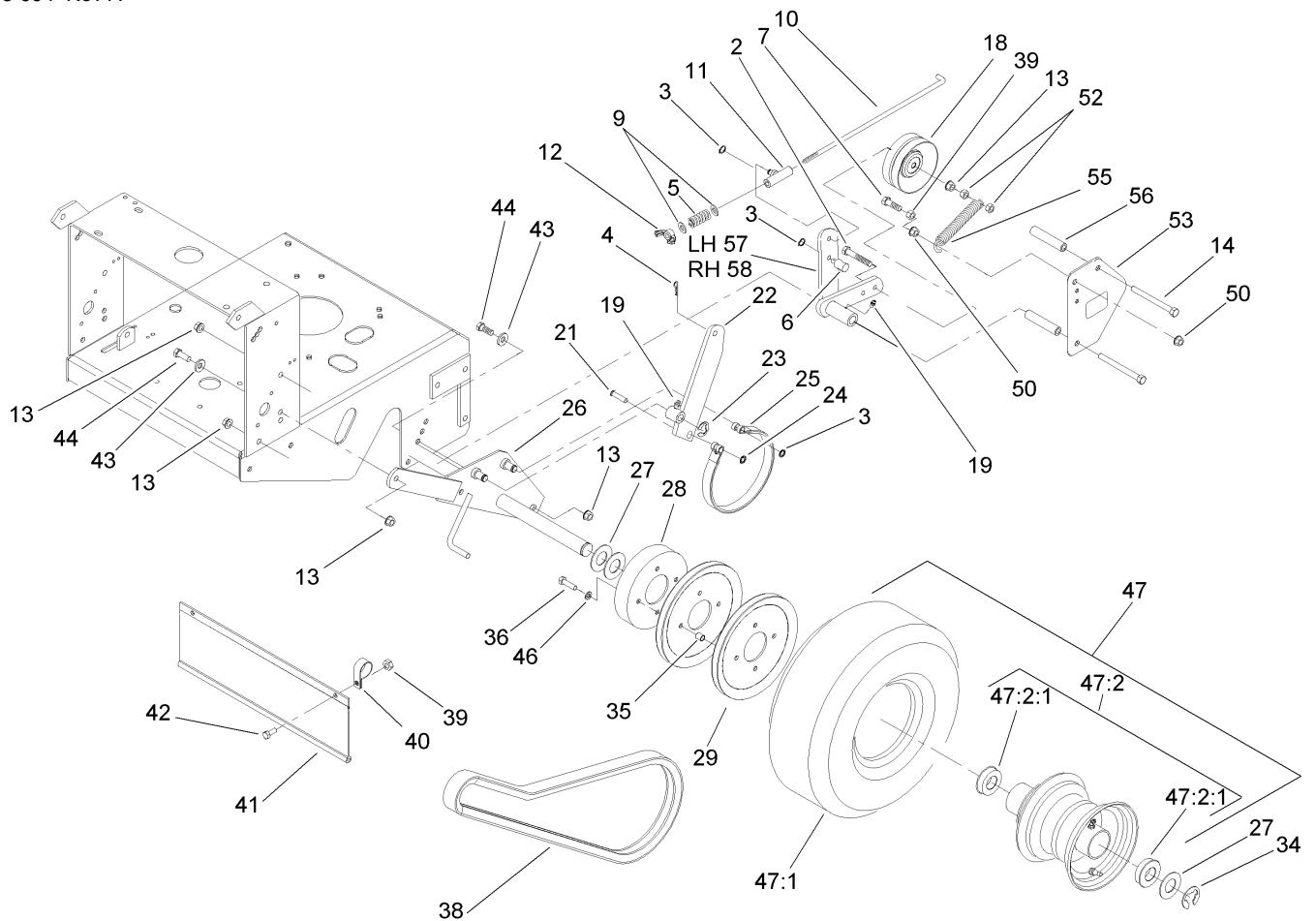
Ref	Part No.	Qty.	Description
26	1-323500	1	Transmission
27	3230-1	2	Bolt-CARR
28	1-323387-03	1	Plate-Shift
29	105-4104	1	Decal-Speed, Ground
30	1-303020	1	Grip-Lever
31	98-3274-03	1	Lever-Shift
32	98-5975	1	Washer-Belleville
33	3296-6	1	Nut-Lock
35	1-323379	1	Washer
36	32128-20	2	Nut-HF
37	9264964	4	Screw-HWH, Thread Cut
38	1-603403	1	Bolt-Shoulder
39	1-323389-03	2	Bracket-Plate, Shift
40	1-806003	3	Pin-Hair
41	1-303186	1	Bellcrank
42	3290-357	1	Nut-HHF, Whiz
43	95-2814	1	Decal-Shut Off, Fuel
44	3290-500	2	Screw-PPH
45	1-543296	1	Grommet
46	3231-6	1	Screw-CARR
47	3296-42	4	Nut-Lock, NI
48	98-0776	1	Decal-Caution
49	103-1666	1	Sheave-Transmission
50	110-4890	1	Pulley ASM



## Transmission Drive Assembly (continued)

Ref	Part No.	Qty.	Description
56	1-603610	2	Washer-Spring
57	3212-6	1	Screw-HH
58	1-633453	1	Spacer-Clutch
59	1-373034	2	Washer
62	32128-33	2	Nut-HF
64	103-1797-01	1	Bracket-Cable, Choke
65	103-1796	1	Cable-Choke
66	1-303282	1	Switch-Start, Neutral
67	1-323303	1	Linkage-Arm
68	110-0543	1	Belt-V
69	1-808280	1	Pin-Clevis
70	1-303105	1	Yoke-Adjustable
71	3219-2	1	Nut-Hex
73	321-4	1	Screw-HH
74	1-323430	1	Module-Interlock
75	1-323229	1	Clip-Loom
76	3256-22	1	Washer-Flat
77	3296-42	1	Nut-Lock, NI
78	1-303335	3	Tie-Plastic

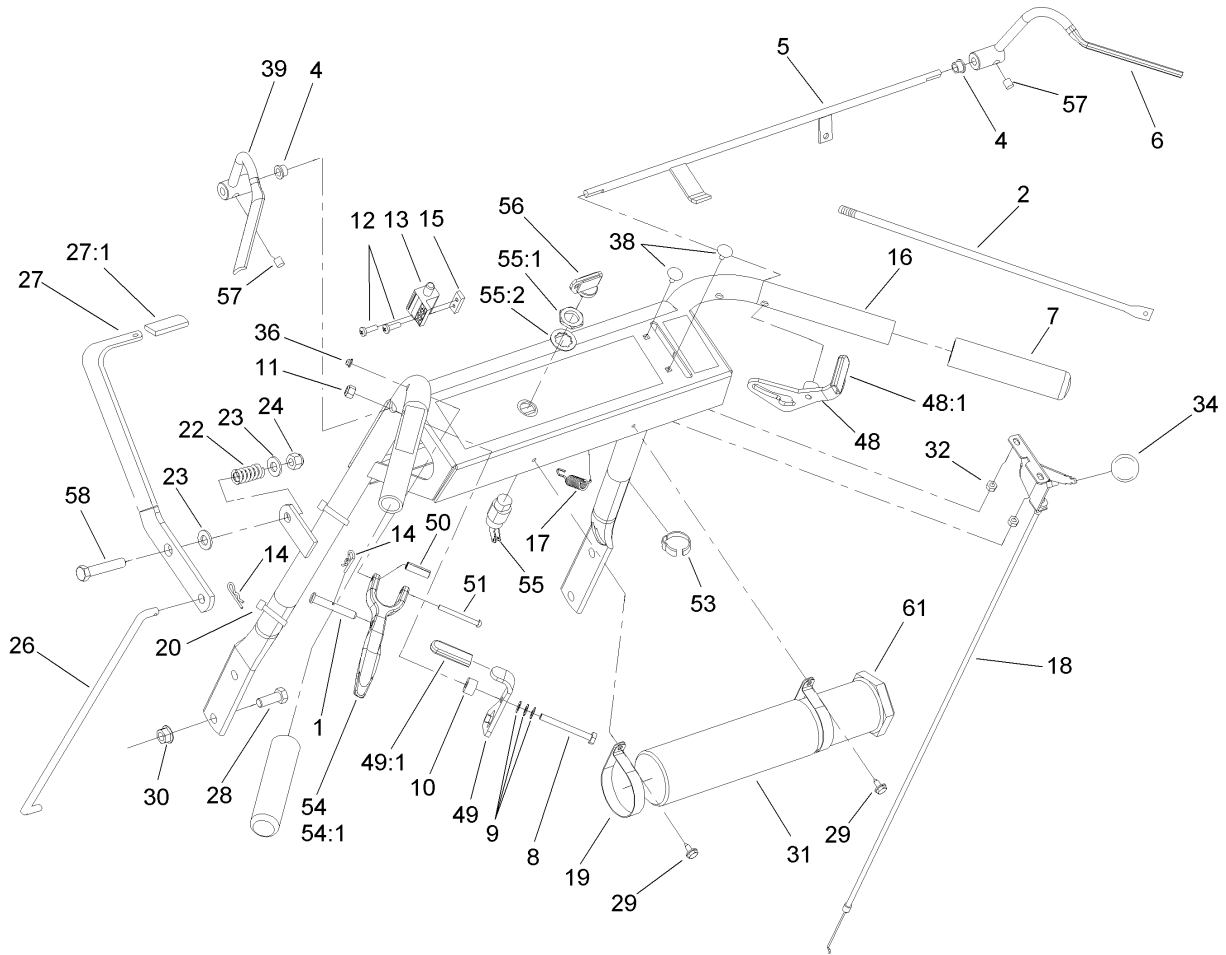
--	--	--	--



## Drive Wheel and Brake Assembly

Ref	Part No.	Qty.	Description
2	99-8664	2	Screw-HH
3	32151-47	6	Ring-Retaining
4	1-806003	2	Pin-Hair
5	1-323245	2	Spring-Compression
6	103-1864	2	Swivel-Lever, Drive
7	322-6	2	Screw-HH
9	3256-23	4	Washer-Flat
10	1-323548	2	Linkage-Brake
11	1-322125	2	Swivel-Brake
12	1-513959	2	Wingnut-Nylock
13	3290-357	10	Nut-HHF, Whiz
14	323-39	4	Screw-HH
18	1-323277	2	Idler-Wheel, Drive
19	302-19	2	Fitting-Grease
21	1-323307	2	Pin-Clevis
22	103-1611-03	2	Arm-Brake ASM
23	32120-47	2	Ring-Retaining, External
24	1-803051	2	Nut-Push
25	1-323262	2	Band-Brake
26	1-322117-03	1	Axle
27	1-523157	6	Washer-Spacer
27	1-543436	8	Washer-Spacer
28	1-323261	2	Drum-Brake
29	1-323253	4	Sheave-Wheel, Drive

Ref	Part No.	Qty.	Description
34	1-808519	2	Ring-Snap
35	1-323260	8	Spacer-Sheave, Wheel
36	322-6	8	Screw-HH
38	1-323631	2	V-Belt
39	3296-29	4	Nut-Lock, NI
40	2412-104	2	R-Clamp
41	98-3259	1	Shield-Trailing
42	322-3	2	Screw-HH
43	98-5975	4	Washer-Belleville
44	323-6	4	Screw-HH
46	1-805005	8	Washer-Lock
47		2	Wheel And Tire ASM
47:1	1-323720	1	Tire-Turfmaster
47:2	1-323328	1	Wheel And Hub ASM
47:2:1	1-323329	2	Bearing-Flanged
50	32128-20	4	Nut-HF
52	3296-39	4	Nut-Lock, NI
53	1-323287-01	2	Shield-Wheel, Drive
55	1-603402	2	Spring-Extension
56	1-323283	4	Spacer-Shield
57	103-1615-03	1	Arm-Idler, LH
58	103-1616-03	1	Arm-Idler, RH



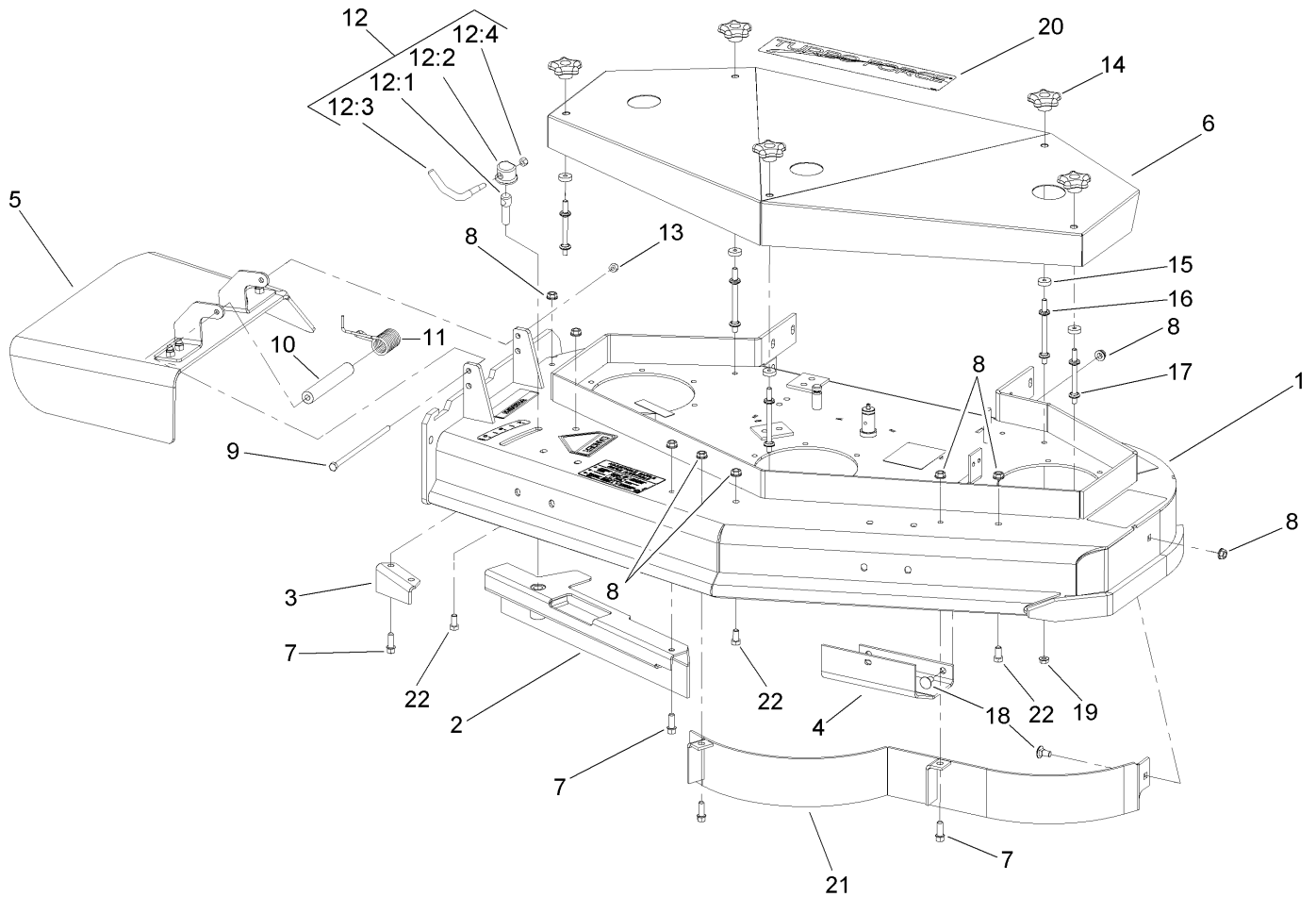
## Handle and Control Assembly

Ref	Part No.	Qty.	Description
1	1-808286	2	Pin-Clevis
2	1-323359	2	Linkage-Wheel, Drive
4	1-303365	2	Bushing-Nylon
5	106-2717-03	1	Rod-Control, Operator Presence
6	106-5486	1	RH Operator Presence Control Lever ASM
7	104-9838	2	Grip-Foam
8	321-18	2	Screw-HH
9	1-303435	6	Washer-Spring
10	1-323549	2	Spacer
11	3296-42	2	Nut-Lock, NI
12	3290-500	2	Screw-PPH
13	1-513051	1	Switch-Open, Normally
14	1-806003	3	Pin-Hair
15	1-633181	1	Plate-Tapped
16	110-6906	1	Gear Handle ASM
17	1-303363	1	Spring-Extension
18	1-633696	1	Throttle Cable ASM
19	2412-120	2	R-Clamp
20	1-303287	2	Tie-Plastic
22	1-303160	1	Spring-Compression
23	3256-4	2	Washer-Flat
24	3296-39	1	Nut-Lock, NI
26	1-323298	1	Linkage-Blade, Upper

Ref	Part No.	Qty.	Description
27	1-322157	1	Lever ASM
27:1	1-303020	1	Grip-Lever
28	3234-11	4	Screw-HHF
29	32104-76	2	Screw
30	32128-21	4	Nut-HF
31	104-7050	1	Housing-Manual
32	3296-2	2	Nut-Lock
34	1-513592	1	Knob-Ball
36	1-803001	2	Nut
38	1-807513	2	Bolt-CARR
39	106-5485	1	LH Operator Presence Control Lever ASM
48	1-324280	1	RH Thumb Latch ASM
48:1	1-303019	1	Grip-Latch
49	1-324279	1	LH Thumb Latch ASM
49:1	1-303019	1	Grip-Latch
50	1-806340	2	Pin-Roll
51	1-808250	2	Pin-Drive Lever
52	103-1610	1	Harness-Wiring
53	1-303088	1	Clip-Cable
54	1-302006	2	Drive Lever ASM
54:1	1-303021	1	Grip-Lever, Drive
55	29-5560	1	Switch-On / Off
55:1	218-461	1	Nut-HH





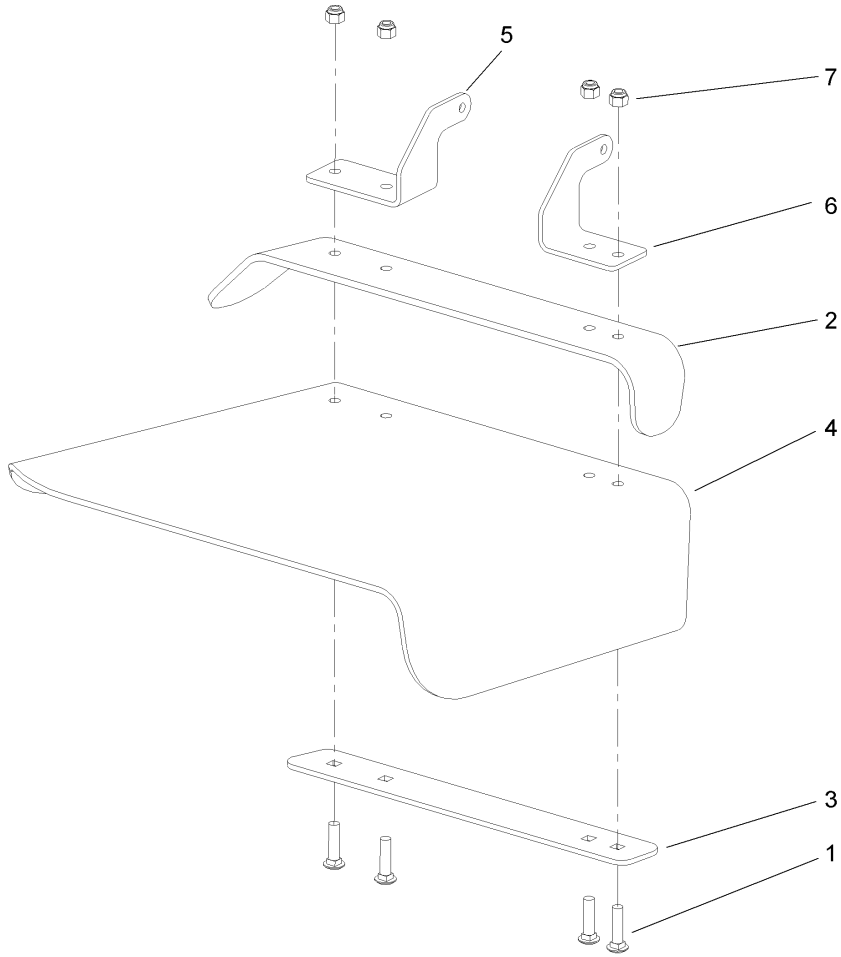


## Deck Assembly

Ref	Part No.	Qty.	Description
1	110-4909	1	Deck ASM
2	110-0533-01	1	Adjustable Baffle
3	110-0744-01	1	Baffle-Discharge
4	107-3166-01	1	Skid
5	110-0758	1	Deflector ASM
6	110-2119-01	1	Cover
7	92-1624	5	Screw
8	3290-357	12	Nut-HHF, Whiz
9	322-50	1	Screw-HH
10	105-4622	1	Spacer
11	104-8554	1	Spring-Torsion
12	107-1664	1	Lever ASM
12:1	106-3239	1	Screw-Lock
12:2	107-1644	1	Cap-Lock
12:3	106-3241	1	Lever-Lock
12:4	3296-29	1	Nut-Lock, NI
13	3296-29	1	Nut-Lock, NI
14	106-4161	5	Knob-Handle
15	1-323417	5	Washer
16	1-303536	3	Stud-Shield, Belt (Long)
17	1-303537	2	Stud-Shield, Belt (Short)
18	3231-1	7	Screw-CARR
19	32128-20	5	Nut-HF
20	110-6920	1	Decal

Ref	Part No.	Qty.	Description
21	110-0735-01	1	Baffle ASM
22	323-4	3	Screw-HH

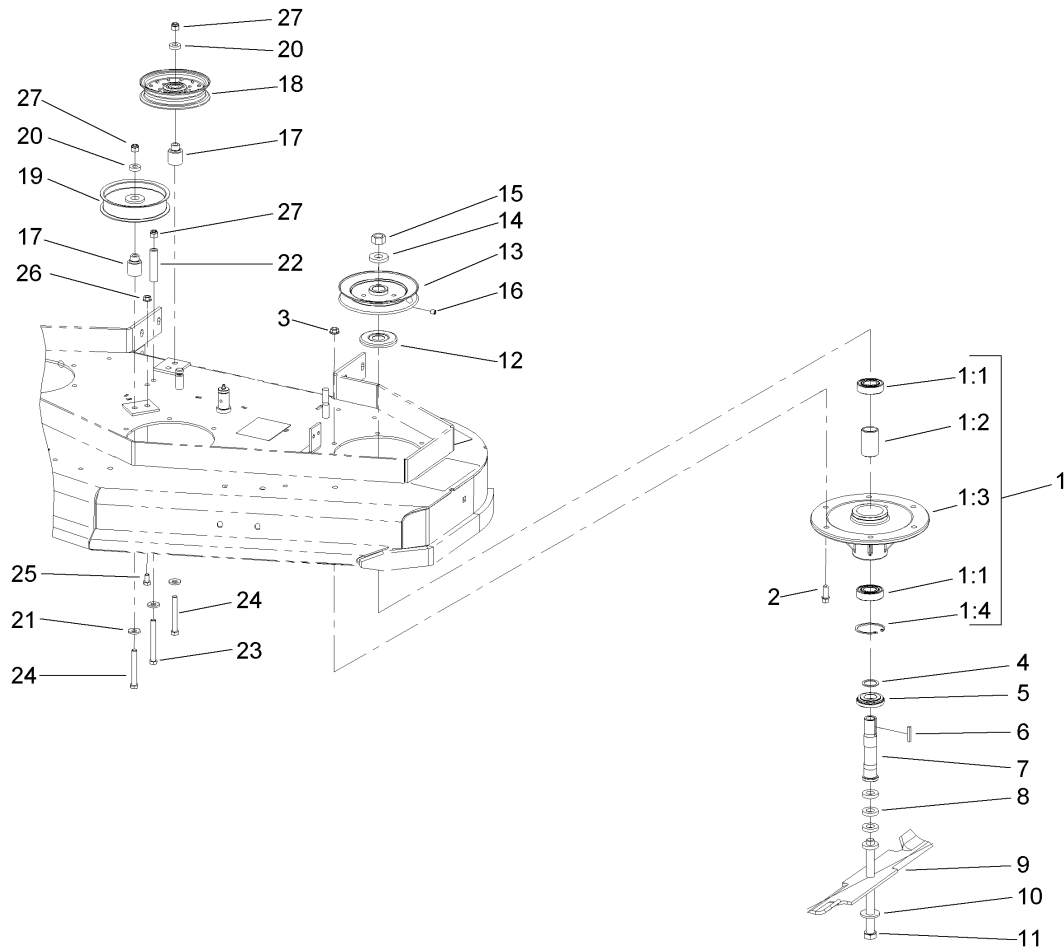




## Deflector Assembly No. 110-0758

Ref	Part No.	Qty.	Description
1	3231-4	4	Screw-CARR
2	106-3246-01	1	Deflector
3	106-3248-03	1	Strap-Discharge
4	110-0759	1	Deflector-Rubber
5	107-4197-01	1	Bracket-Hinge, Rear
6	107-4196-01	1	Bracket-Hinge, Front
7	3296-39	4	Nut-Lock, NI

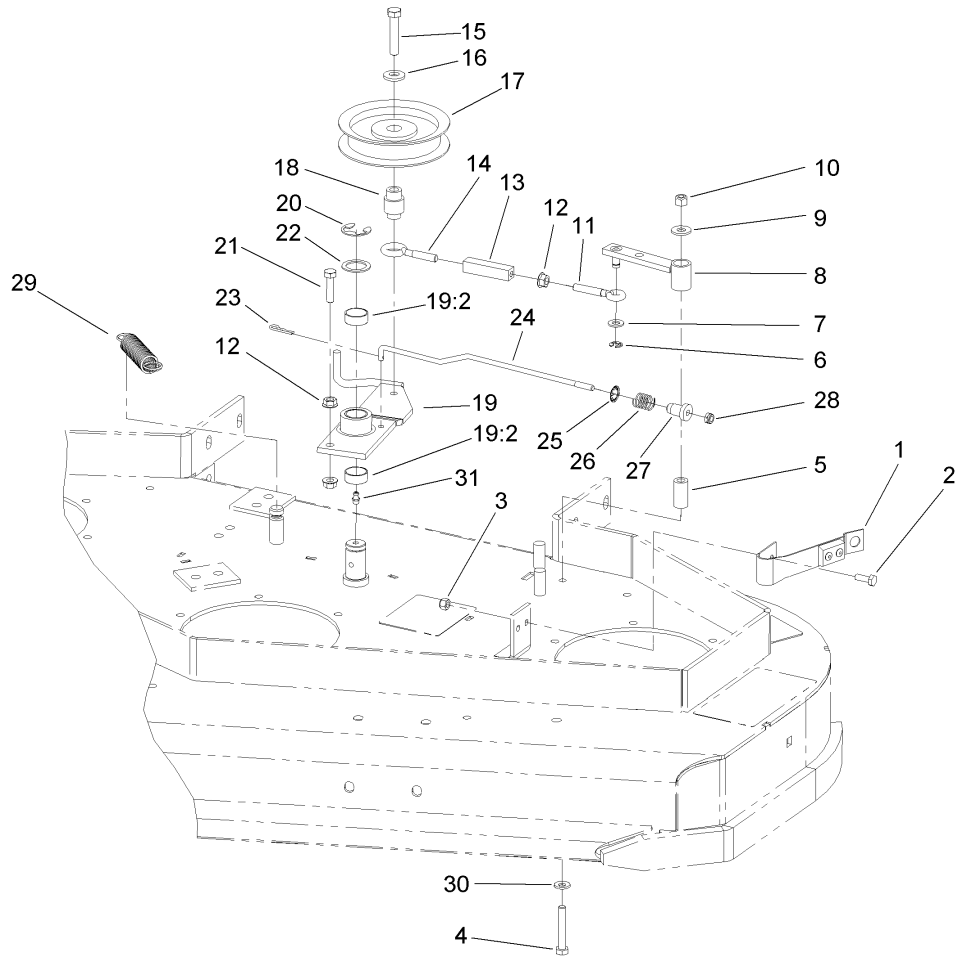
--	--	--	--



## Sheave, Spindle and Blade Assembly

Ref	Part No.	Qty.	Description
1	108-6697	3	Spindle Housing ASM
1:1	110-2118	2	Bearing
1:2	110-2116	1	Spacer-Bearing
1:3	108-6694	1	Housing-Spindle
1:4	32120-8	1	Ring-Snap
2	92-1624	18	Screw
3	3290-357	18	Nut-HHF, Whiz
4	110-4888	3	Washer-Spacer
5	103-2535	3	Spacer-Guard, Bottom
6	1-807267	3	Key
7	1-323529	3	Tube-Spindle, Short
8	1-323539	12	Spacer-Drive, Blade
9	107-3192	3	Blade-Rotary, 16.5 Inch (High Flow)
10	1-513208	3	Washer-Spring
11	1-800861	3	Screw-Cap, HH
12	103-1330	3	Guard-Bearing, Top
13	1-403183	3	Sheave
14	1-323339	3	Washer-Retainer, Sheave
15	3219-6	3	Nut-Hex
16	1-803310	3	Screw-Set
17	1-403184	2	Bushing-Idler
18	1-403186	1	Idler-Pulley, Flat
19	1-613098	1	Pulley-Idler

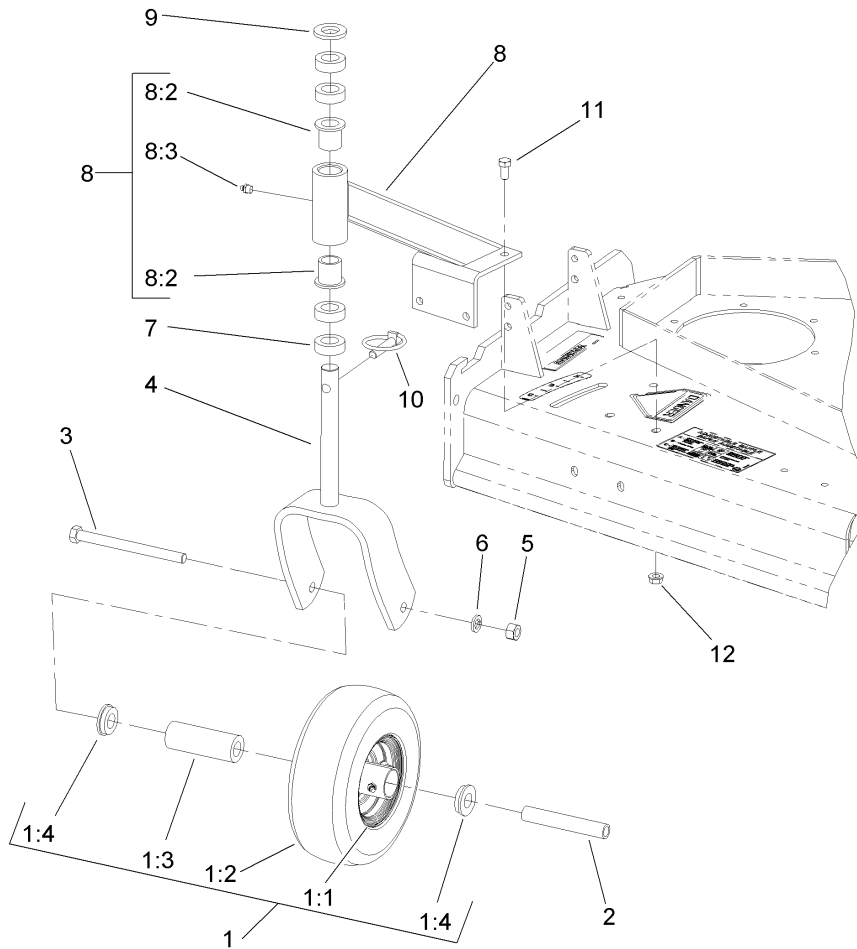
Ref	Part No.	Qty.	Description
20	5-0652	2	Spacer
21	98-5975	3	Washer-Belleville
22	1-403188	1	Spacer
23	323-15	1	Screw-HH
24	323-14	2	Screw-HH
25	322-2	1	Screw-HH
26	32128-20	1	Nut-HF
27	3296-39	3	Nut-Lock, NI



### Idler Assembly

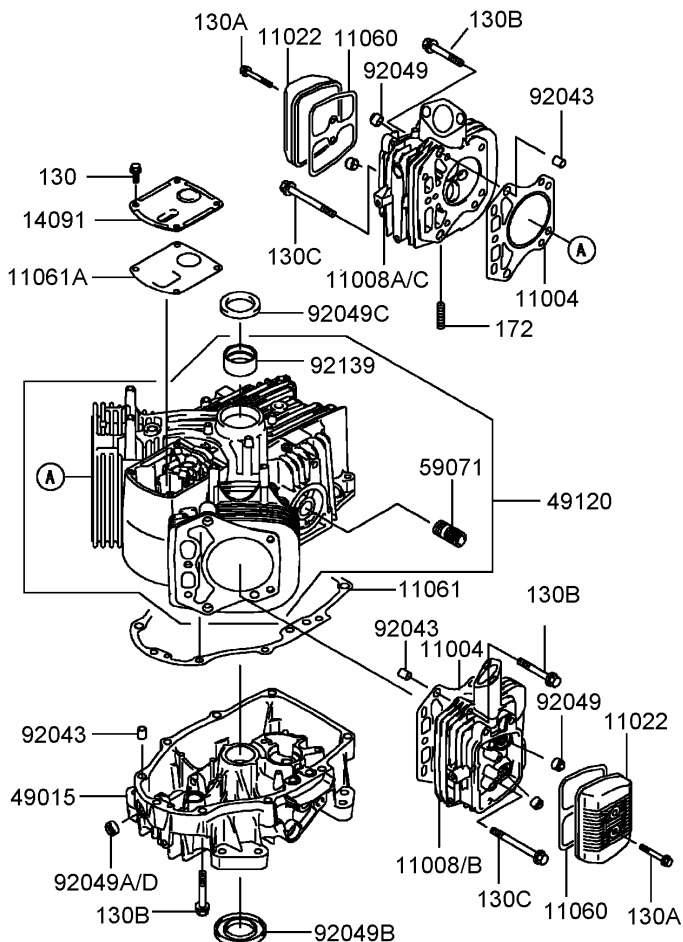
Ref	Part No.	Qty.	Description
1	1-324372	1	Pad/Spring ASM
2	321-4	2	Screw-HH
3	3296-42	2	Nut-Lock, NI
4	322-10	1	Screw-HH
5	1-403179	1	Tube, Pivot
6	32120-35	1	E-Ring
7	3256-23	1	Washer-Flat
8	1-322235	1	Arm-Assist
9	3256-3	1	Washer-Flat
10	3296-29	1	Nut-Lock, NI
11	1-303238	1	Eyebolt-Thread, RH
12	32128-20	3	Nut-HF
13	1-303236	1	Body-Turnbuckle
14	1-303348	1	Eyebolt-Thread, LH
15	702809	1	Screw-Cap
16	98-5975	1	Washer-Belleville
17	1-603843	1	Pulley-Idler
18	1-303434	1	Bushing-Engagement
19	103-3600	1	Idler Arm ASM
19:2	1-323729	2	Sleeve-Bearing
20	32151-103	1	Ring-Snap
21	322-6	1	Screw-HH
22	1-303352	1	Washer-Spindle
23	1-806003	1	Pin-Hair

Ref	Part No.	Qty.	Description
24	103-5602	1	Rod-Brake
25	1-323748	1	Ring-Push On
26	1-323747	1	Spring-Compression
27	1-323746	1	Spacer-Flanged
28	3296-56	1	Nut-Lock, NI
29	1-323071	1	Spring-Extension
30	1-303334	1	Washer-Spring
31	302-19	2	Fitting-Grease



## Caster Assembly

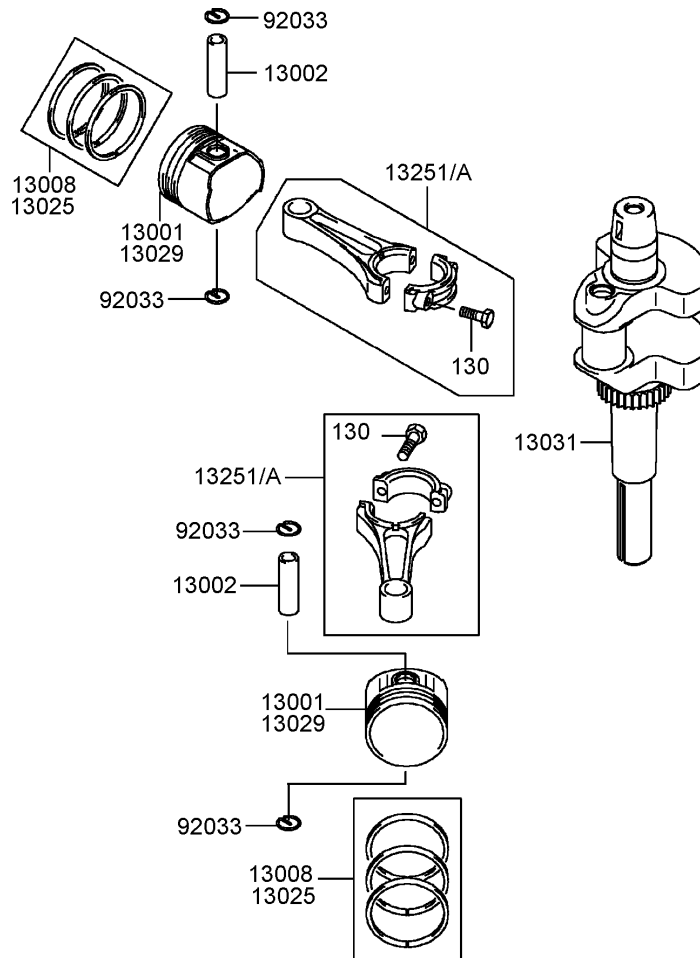
Ref	Part No.	Qty.	Description
1	1-513648	2	Wheel And Tire ASM
② 1:1		1	Rim
1:2	1-513808	1	Tire
1:3	1-513809	1	Bearing
1:4	1-513810	2	Bushing
2	1-513547	2	Spacer
3	325-20	2	Screw-HH
4	1-322145-01	2	Fork
5	3217-9	2	Nut-Hex
6	3253-7	2	Washer-Lock
7	1-303314	8	Spacer-Caster
8	110-2130	2	Support ASM
8:2	1-303514	2	Bearing-Flanged
8:3	302-52	1	Fitting-Grease
9	1-513338	2	Washer-Flat
10	1-809020	2	Pin
11	323-4	8	Screw-HH
12	3290-357	8	Nut-HHF, Whiz

## Cylinder and Crankcase Assembly Kawasaki Model FH430V-AS25

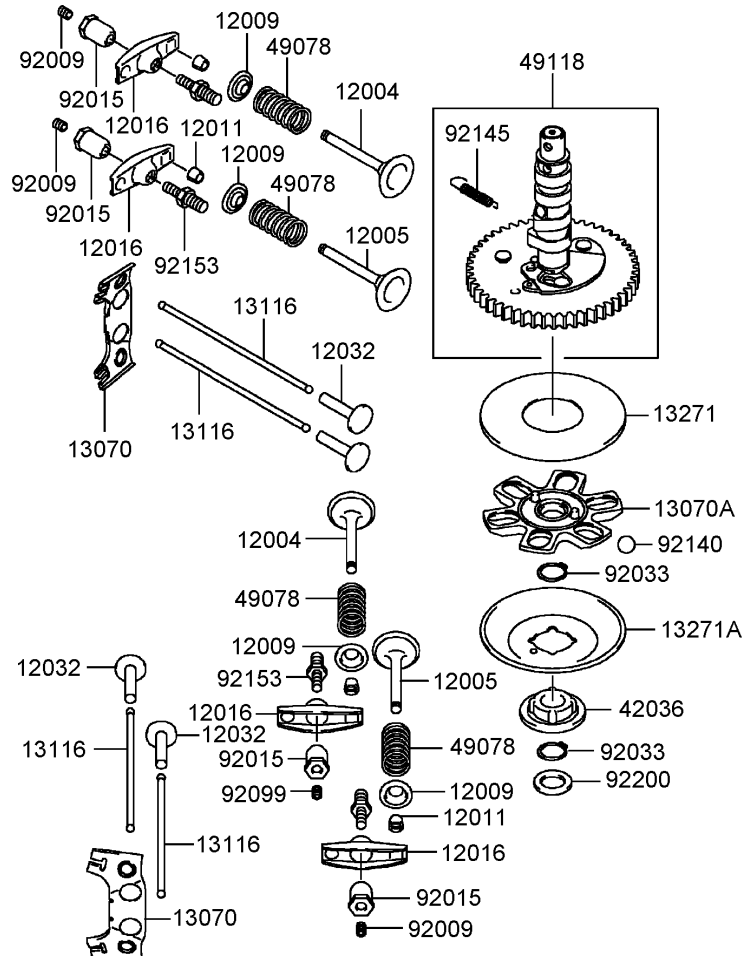
Ref	Part No.	Qty.	Description
①11004	11004-7008	1	Gasket-Head
①11008	11008-7011	1	Head-Comp-Cylinder, No.2
①11008A	11008-7017	1	Head-Comp-Cylinder, No.1
①11008B	11008-7021	1	Head-Comp-Cylinder, No. 2
①11008C	11008-7022	1	Head-Comp-Cylinder, No. 1
①11022	11022-7003	1	Case-Rocker
①11060	11060-7001	1	Gasket-Case, Rocker
①11061	11061-7007	1	Gasket-Cover, Crankcase
①11061A	11061-7008	1	Gasket-Breather
①14091	14091-7007	1	Cover
①49015	49015-7032	1	Cover-Crankcase
①49120	49120-7015	1	Crankcase-Comp
①59071	59071-2079	1	Joint
①92043	92043-7001	1	Pin
①92049	92049-7001	1	Seal-Oil, Rvc2 (6X11X10.2)
①92049A	92049-7005	1	Seal-Oil, So (8X14X5 Hs)
①92049B	92049-7015	1	Seal-Oil, Sd (35X62X8 L Hs)
①92049C	92049-7016	1	Seal-Oil, Sd (35X48X8 R Hs)
①92049D	92049-7019	1	Seal-Oil, So (8X14X5 Hs)
①92139	92139-7002	1	Bushing
①130	130B0612	1	Bolt-Flanged
①130A	130B0640	1	Bolt-Flanged
①130B	130T0850	1	Bolt-Flanged
①130C	130T0875	1	Bolt-Flanged

Ref	Part No.	Qty.	Description
①172	172G0818	1	Bolt-Stud



## Piston and Crankshaft Assembly Kawasaki Model FH430V-AS25

Ref	Part No.	Qty.	Description				
● 13001	13001-7009	1	Piston-Engine				
● 13002	13002-7001	1	Pin-Piston				
● 13008	13008-7001	1	Ring Set-Piston				
● 13025	13025-7003	1	Ring Set-Piston (L,0.50)				
● 13029	13029-7005	1	Piston-Engine (L,0.50)				
● 13031	13031-7033	1	Crankshaft-Comp				
● 13251	13251-7007	1	Connecting Rod ASM				
● 13251A	13251-7008	1	Connecting Rod ASM (U/S=0.50)				
● 92033	92033-7005	1	Ring-Snap				
● 130	130G0630	1	Bolt-Flanged				

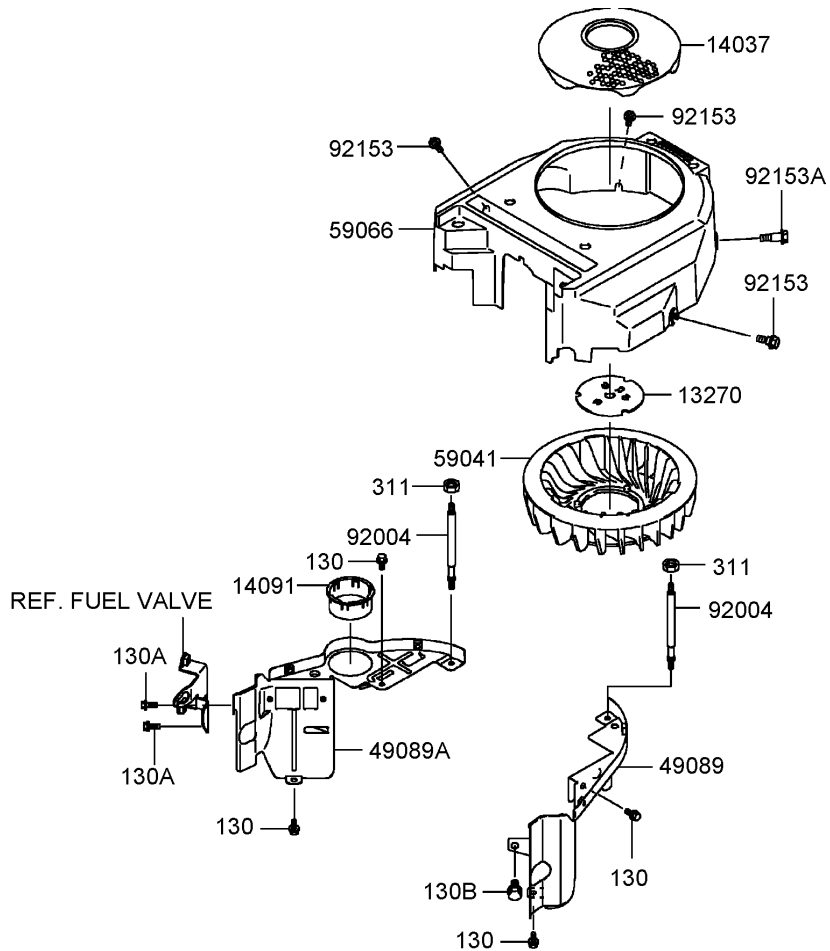


## Valve and Camshaft Assembly Kawasaki Model FH430V-AS25

Ref	Part No.	Qty.	Description
①	12004	1	Valve-Intake
①	12005	1	Valve-Exhaust
①	12009	1	Retainer-Spring, Valve
①	12011	1	Collet
①	12016	1	Arm-Rocker
①	12032	1	Tappet
①	13070	1	Guide
①	13070A	1	Guide
①	13116	1	Rod-Push
①	13271	1	Plate
①	13271A	1	Plate-Governor
①	42036	1	Sleeve
①	49078	1	Spring-Valve, Engine
①	49118	1	Camshaft-Comp
①	92009	1	Screw
①	92015	1	Nut
①	92033	1	Ring-Snap
①	92140	1	Ball
①	92145	1	Spring
①	92153	1	Bolt
①	92200	1	Washer

--	--	--	--

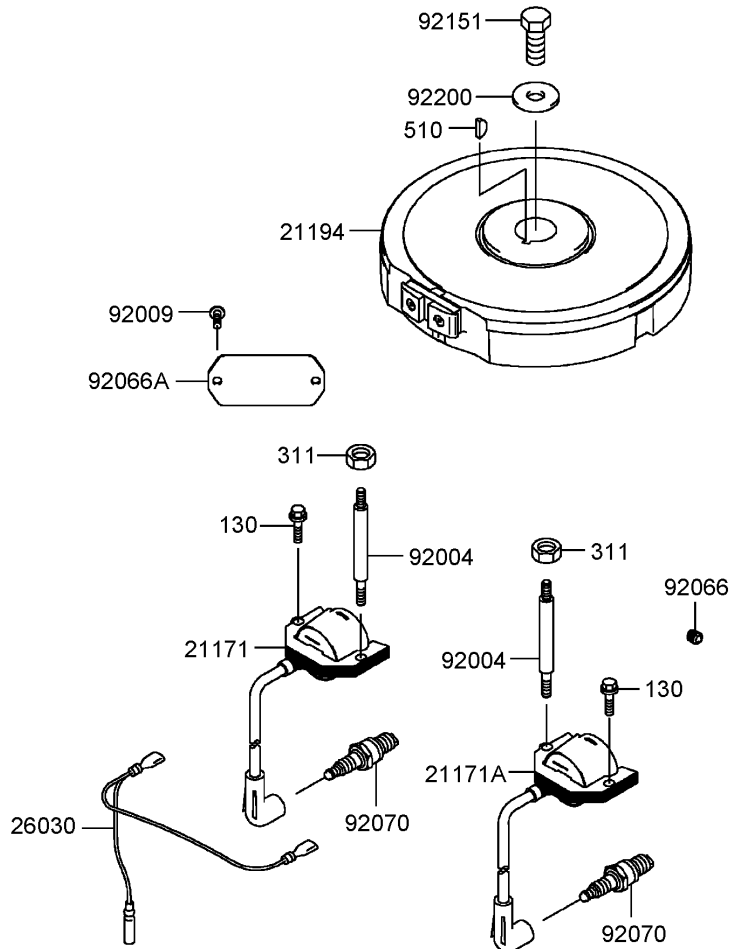




## Cooling Equipment Assembly Kawasaki Model FH430V-AS25

Ref	Part No.	Qty.	Description
③13270	13270-7007	1	Plate
③14037	14037-7021-9H	1	Screen
③14091	14091-7009	1	Cover
③49089	49089-7044	1	Shroud-Engine
③49089A	49089-7045	1	Shroud-Engine
③59041	59041-7010	1	Fan
③59066	59066-7023	1	Housing-Fan
③92004	92004-7007	1	Stud
③92153	92153-7007	1	Bolt
③92153A	92153-7008	1	Bolt
③130	130B0612	1	Bolt-Flanged
③130A	130B0616	1	Bolt-Flanged
③130B	130B0816	1	Bolt-Flanged
③311	311F0600	1	Nut-Hex

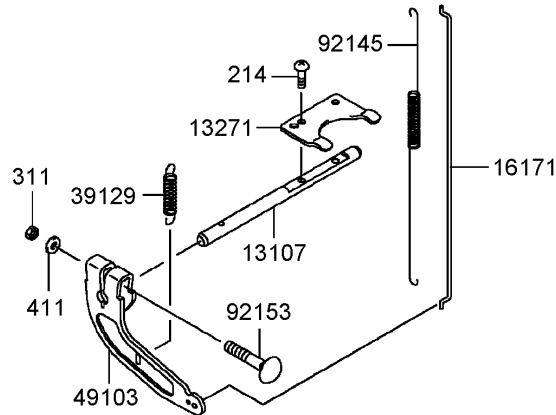
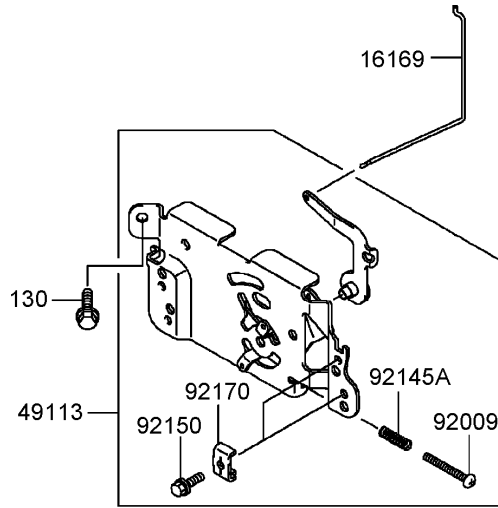
--	--	--	--



## Electric Equipment Assembly Kawasaki Model FH430V-AS25

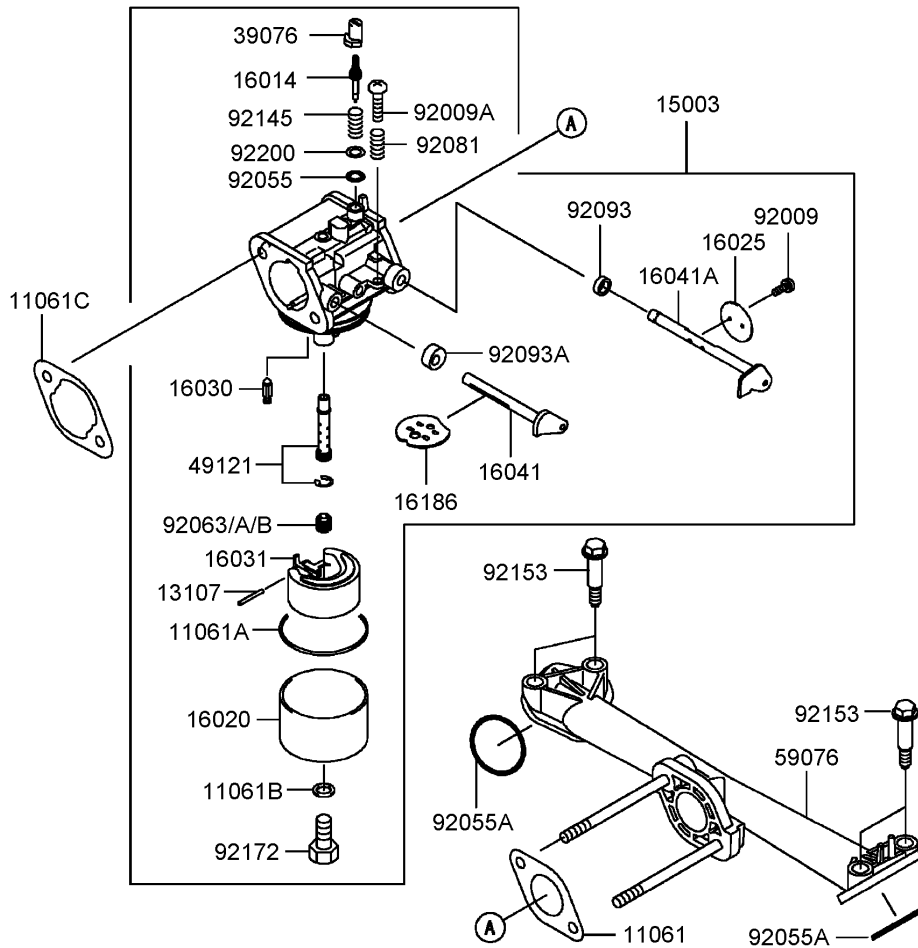
Ref	Part No.	Qty.	Description
①21171	21171-7013	1	Ignition Coil ASM
①21171A	21171-7014	1	Ignition Coil ASM
①21194	21194-7013	1	Flywheel-Comp
①26030	26030-7001	1	Harness
①92004	92004-7008	1	Stud
①92009	92009-2308	1	Screw
①92066	92066-7002	1	Plug
①92066A	92066-7005	1	Plug
①92070	92070-7003	1	Plug-Spark (Rcj8Y, Solid)
①92151	92151-2097	1	Bolt (12X30)
①92200	92200-7002	1	Washer
①130	130B0620	1	Bolt-Flanged
①311	311F0600	1	Nut-Hex
①510	510A5100	1	Key-Woodruff

--	--	--	--



## Control Equipment Assembly Kawasaki Model FH430V-AS25

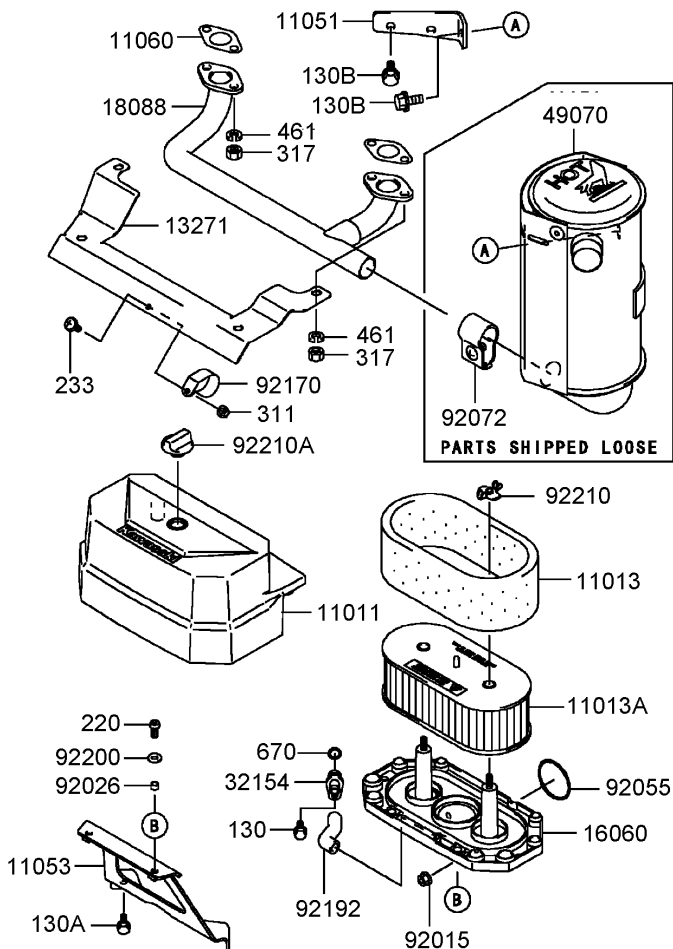
Ref	Part No.	Qty.	Description
③13107	13107-7010	1	Shaft
③13271	13271-7018	1	Plate
③16169	16169-7012	1	Link-Choke
③16171	16171-7007	1	Link
③39129	39129-7003	1	Spring-Governor
③49103	49103-7004	1	Arm-Governor
③49113	49113-7024	1	Panel-Control
③92009	92009-7007	1	Screw (4X35)
③92145	92145-7003	1	Spring
③92145A	92145-7005	1	Spring
③92150	92150-2182	1	Bolt (5X18)
③92153	92153-7005	1	Bolt (6X35)
③92170	92170-7001	1	Clamp
③130	130B0612	1	Bolt-Flanged
③214	214B0408	1	Screw-Pan
③311	311B0600	1	Nut-Hex
③411	411b0600	1	Washer-Plain



## Carburetor Assembly Kawasaki Model FH430V-AS25

Ref	Part No.	Qty.	Description
● 11061	11061-7004	1	Gasket-Insulator
● 11061A	11061-7009	1	Gasket-Chamber
● 11061B	11061-7010	1	Gasket-Screw
● 11061C	11061-7018	1	Gasket-Cleaner, Air
● 13107	13107-7018	1	Shaft
● 15003	15003-7061	1	Carburetor-ASM
● 16014	16014-7002	1	Screw-Pilot
● 16020	16020-7003	1	Chamber-Float
● 16025	16025-7006	1	Valve-Throttle
● 16030	16030-7003	1	Valve-Float
● 16031	16031-7002	1	Float
● 16041	16041-7016	1	Shaft-Choke, Carburetor
● 16041A	16041-7018	1	Shaft-Throttle, Carburetor
● 16186	16186-7002	1	Choke Valve ASM
● 39076	39076-7001	1	Limiter
● 49121	49121-7001	1	Nozzle-Main
● 59076	59076-7005	1	Manifold-Intake
● 92009	92009-2083	1	Screw
● 92009A	92009-2349	1	Screw
● 92055	92055-2174	1	O-Ring
● 92055A	92055-7007	1	O-Ring (Id=31)
● 92063	92063-7026	1	Jet-Main, #88
● 92063A	92063-7028	1	Jet-Main, #85
● 92063B	92063-7029	1	Jet-Main, #82

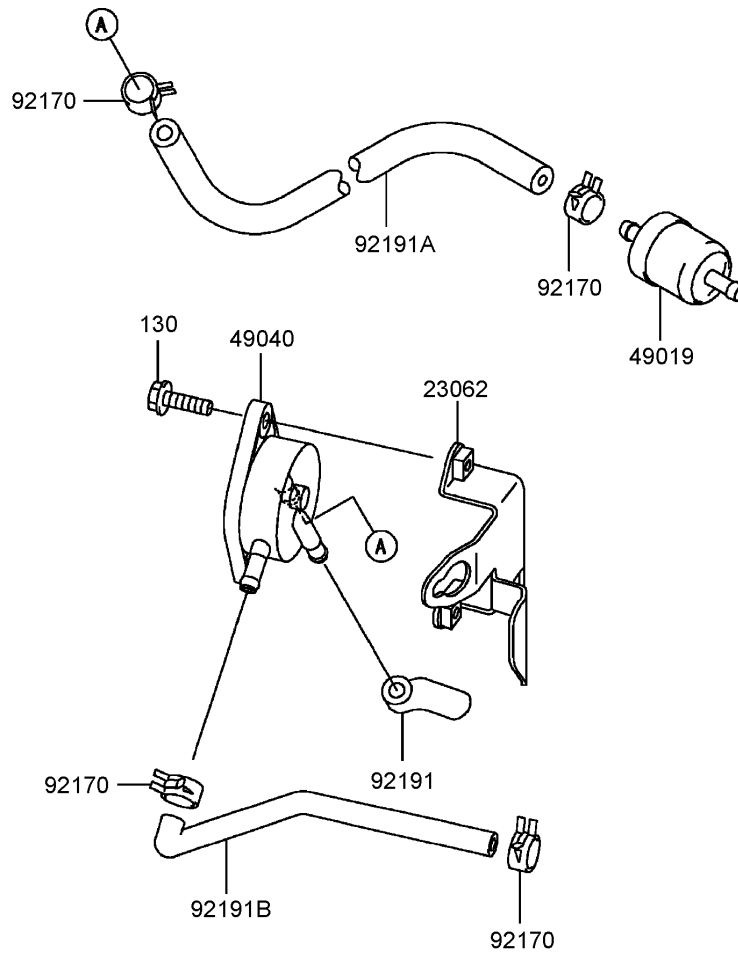
Ref	Part No.	Qty.	Description
● 92081	92081-2234	1	Spring
● 92093	92093-2100	1	Seal
● 92093A	92093-7003	1	Seal
● 92145	92145-7015	1	Spring
● 92153	92153-7009	1	Bolt
● 92172	92172-7002	1	Screw
● 92200	92200-7014	1	Washer



## Air Filter and Muffler Assembly Kawasaki Model FH430V-AS25

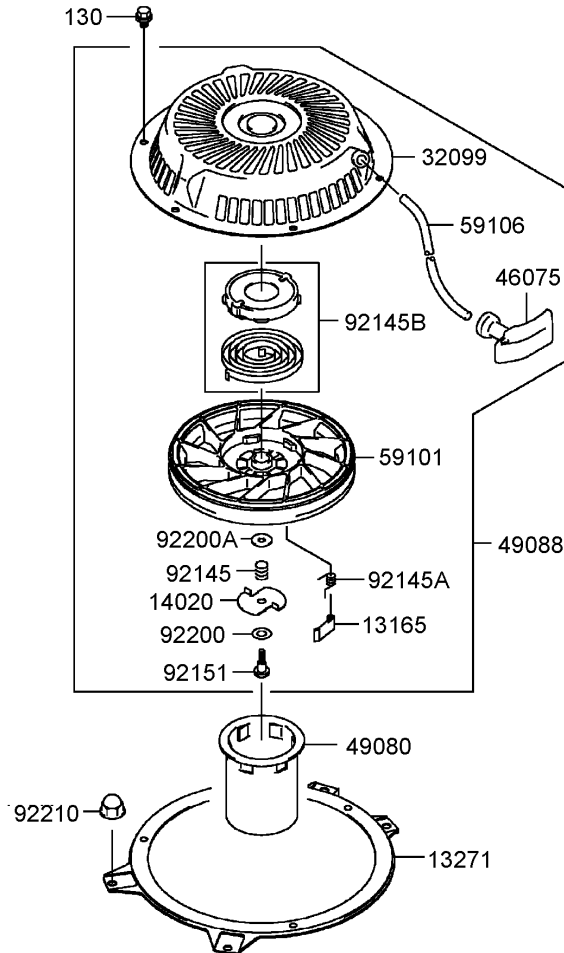
Ref	Part No.	Qty.	Description
③11011	11011-7035	1	Case-Filter, Air
③11013	11013-7025	1	Element-Airfilter
③11013A	11013-7031	1	Element-Airfilter
③11051	11051-7005-9H	1	Bracket
③11053	11053-7022	1	Bracket
③11060	11060-7021	1	Gasket-Muffler
③13271	13271-7022	1	Plate
③16060	16060-7016	1	Pipe-Intake
③18088	18088-7001	1	Pipe-Exhaust
③32154	32154-7006	1	Pipe
③49070	49070-7015	1	Muffler
③92015	92015-1193	1	Nut
③92026	92026-7001	1	Spacer (6.2X7.9X5)
③92055	92055-7015	1	Ring-O
③92072	92072-7008	1	Band
③92170	92170-7002	1	Clamp
③92192	92192-7010	1	Tube
③92200	92200-2070	1	Washer
③92210	92210-7004	1	Nut
③92210A	92210-7019	1	Nut
③130	130B0610	1	Bolt-Flanged
③130A	130B0612	1	Bolt-Flanged
③130B	130B0816	1	Bolt-Flanged

Ref	Part No.	Qty.	Description
③220	220B0614	1	Screw-Pan (Cross)
③233	233B0416	1	Screw
③311	311B0400	1	Nut-Hex
③317	317R0800	1	Nut-Hex
③461	461F0800	1	Washer-Spring
③670	670B2010	1	O-Ring (10Mm)



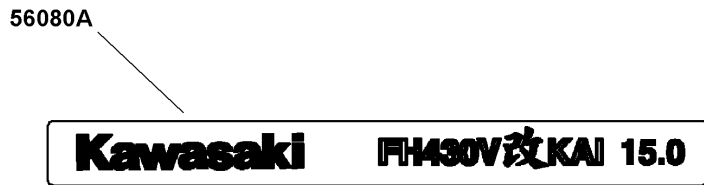
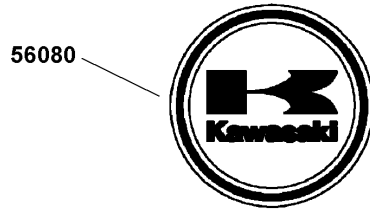
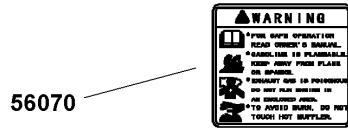
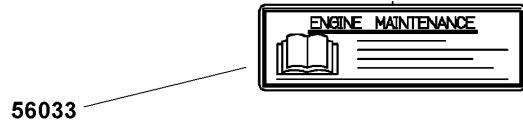
## Fuel Tank and Fuel Valve Assembly Kawasaki Model FH430V-AS25

Ref	Part No.	Qty.	Description
①	23062-7004-9H	1	Bracket
②	49019-7001	1	Filter-Fuel
③	49040-7001	1	Pump-Fuel
④	92170-2088	1	Clamp
⑤	92191-7002	1	Tube
⑥	92191A-7003	1	Tube (6.35X12.7X160)
⑦	92191B-7004	1	Tube
⑧	130B0620	1	Bolt-Flanged



## Starter Assembly Kawasaki Model FH430V-AS25

Ref	Part No.	Qty.	Description				
13165	13165-7001	1	Pawl-Starter, Recoil				
13271	13271-7003-9H	1	Plate				
14020	14020-7001	1	Retainer				
32099	32099-7002	1	Case-Recoil, Starter				
46075	46075-7001	1	Grip-Recoil, Starter				
49080	49080-7001	1	Pulley-Starting				
49088	49088-7013	1	Starter-Recoil				
59101	59101-7001	1	Reel-Recoil				
59106	59106-7001	1	Rope				
92145	92145-7006	1	Spring				
92145A	92145-7007	1	Spring				
92145B	92145-7008	1	Spring				
92151	92151-7008	1	Bolt				
92200	92200-7004	1	Washer				
92200A	92200-7005	1	Washer				
92210	92210-0003	1	Nut				
130	130B0608	1	Bolt-Flanged				



**Label Assembly**  
**Kawasaki Model FH430V-AS25**

Ref	Part No.	Qty.	Description
⑤56033	56033-7001	1	Label-Manual
⑤56070	56070-7001	1	Label-Warning
⑤56080	56080-2077	1	Label-Brand
⑤56080A	56080-7024	1	Label-Brand

## Attachments and Accessories

### For 30688 - Commercial Walk-Behind Mower, Fixed Deck Pistol Grip Gear with 48in TURBO FORCE Cutting Unit

<b>Product Name</b>	<b>Model/Part</b>
Blade-Low Flow, 16.5 Inch .....	107-3193-03
Blade-Mid Flow, 16.5 Inch .....	107-3194-03
Blade-Atomic, 16.5 Inch .....	107-3195-03
Blade-Recycling, 16.5 Inch .....	107-3196-03
Bagging Enhancement Kit .....	108-4091
48 Inch Recycler Kit .....	110-2060
Weight Kit .....	110-2085
Soft Bag (3 Bushel) .....	30104
Sulky .....	30109

# NOTES

# NOTES

# NOTES

