



# 52in Recycler<sup>®</sup> Kit

## TURBO FORCE<sup>®</sup> Cutting Unit for Mid-Size Mowers

Model No. 110-2040

## Parts Catalog

### Ordering Replacement Parts

To order replacement parts, please supply the part number, the quantity, and the description of each part desired.

### Understanding Reference Numbers

Each Identified part in an illustration has a reference number. The reference number for a part also appears in the parts list, along with other information about the part.

This catalog uses two special reference number formats, one to indicate parts in a service assembly and another to indicate the quantity of a given part in an illustration.

### Service Assembly Reference Numbers

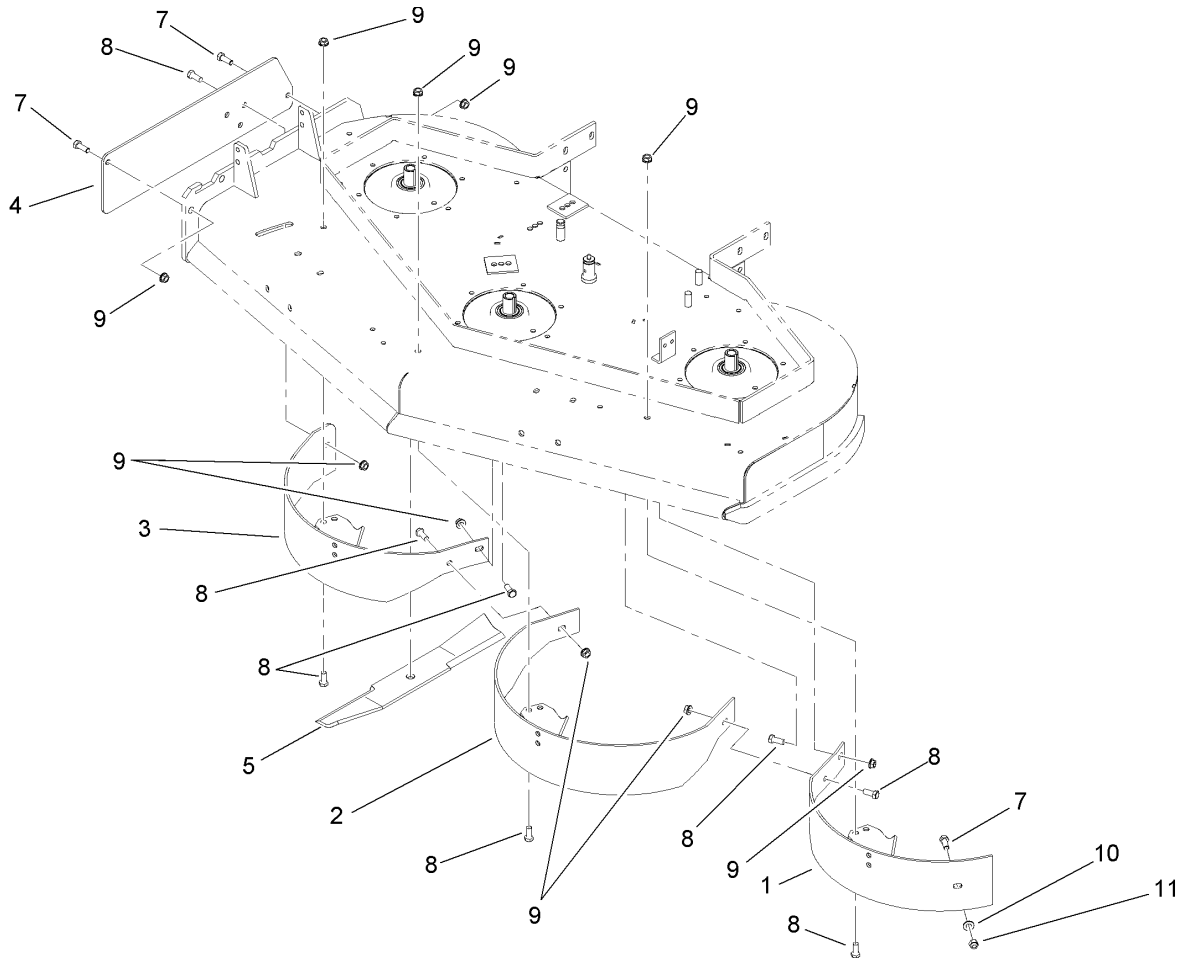
Parts in service assemblies have reference numbers in the form a:b. The a represents the reference number of the entire service assembly and the b represents a sequential number unique to each part within the service assembly.

For example, a wheel assembly might be identified by reference number 6, the tire by 6:1, the valve by 6:2, and the wheel by 6:3. When you order the assembly identified by reference number 6, you receive all parts identified by reference numbers 6:1, 6:2, and 6:3. However, you may also order any part individually. Reference numbers of this type appear in illustrations and in part lists.

### Reference Numbers Indicating Quantity

In an illustration, if a reference number indicates more than one part, the reference number has the form nX y. The n represents the quantity of the part, the X is the multiplication symbol, and the y represents the reference number.

For example, in an illustration, the reference number 2X 37 means that two of the parts identified by reference number 37 are indicated.



## 52 Inch Recycler Assembly

| Ref | Part No.    | Qty. | Description       |
|-----|-------------|------|-------------------|
| 1   | 110-2041-01 | 1    | LH Baffle ASM     |
| 2   | 110-2043-01 | 1    | Center Baffle ASM |
| 3   | 110-2045-01 | 1    | RH Baffle ASM     |
| 4   | 110-2047-01 | 1    | Plate-Discharge   |
| 5   | 105-7779-03 | 3    | Blade-Recycler    |
| 7   | 323-6       | 3    | Screw-HH          |
| 8   | 323-5       | 8    | Screw-HH          |
| 9   | 3290-357    | 10   | Nut-HHF, Whiz     |
| 10  | 3256-24     | 1    | Washer-Flat       |
| 11  | 3296-39     | 1    | Nut-Lock, NI      |

|  |  |  |  |
|--|--|--|--|
|  |  |  |  |
|--|--|--|--|