



Temperature Sender Kit

For Groundsmaster 1000L Traction Units

Model No. 108-9699

Installation Instructions

Installation

1. Disconnect the battery cables.
2. Disconnect the wires from the temperature sender on the engine (Figure 1).
3. Remove the temperature sender from the engine adapter (Figure 1). Do not remove the sender adapter from the engine.

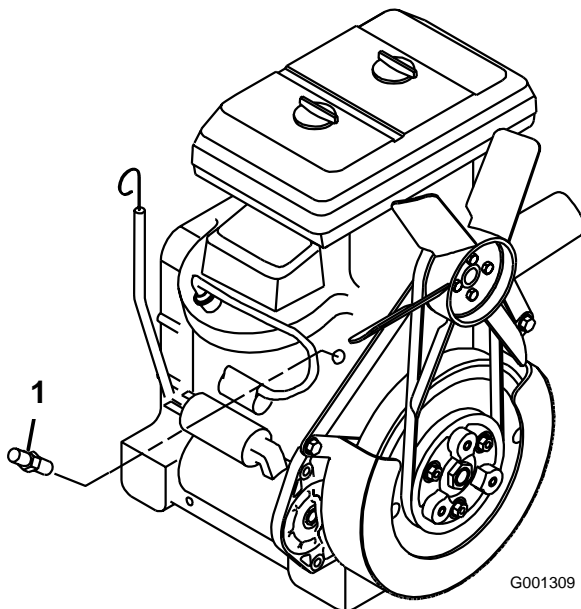


Figure 1

1. Temperature sender

4. Install the new temperature sender switch to the engine.
5. Connect the ring terminal, of the new wire harness, to the new temperature sender with the insulated washer, flatwasher, lockwasher and hex nut. Tighten the nut to no more than 20 in.-lbs.
6. Plug the (2) sender wires to the new wire harness.
7. Disconnect all the wires from the temperature gauge (Figure 2). Note mounting position of wires on gauge.

8. Remove the clamp securing the temperature gauge to the control panel. Remove the gauge.
9. Mount the new temperature gauge to the control panel with the clamp and fasteners supplied.
10. Route the wire harness, along the existing harness, to the new temperature gauge.

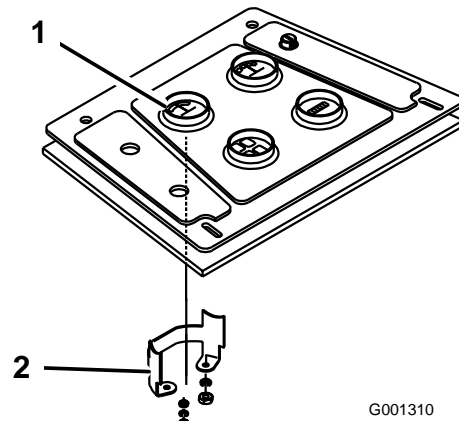


Figure 2

1. Temperature gauge
2. Mounting clamp

11. Reconnect the existing wires to the new temperature gauge.
12. Connect the bullet terminal, from the new harness, to the fourth stud on the gauge (red decal on stud).
13. Secure the harness with cable ties. Keep harness away from any hot, sharp or moving parts.
14. Reconnect the battery cables.