



## Manual Blade Sand Pro® 3040 and 5040

Model No. 08714 - 260000001 and up.

## Parts Catalog

### Ordering Replacement Parts

To order replacement parts, please supply the part number, the quantity, and the description of each part desired.

### Understanding Reference Numbers

Each Identified part in an illustration has a reference number. The reference number for a part also appears in the parts list, along with other information about the part.

This catalog uses two special reference number formats, one to indicate parts in a service assembly and another to indicate the quantity of a given part in an illustration.

### Service Assembly Reference Numbers

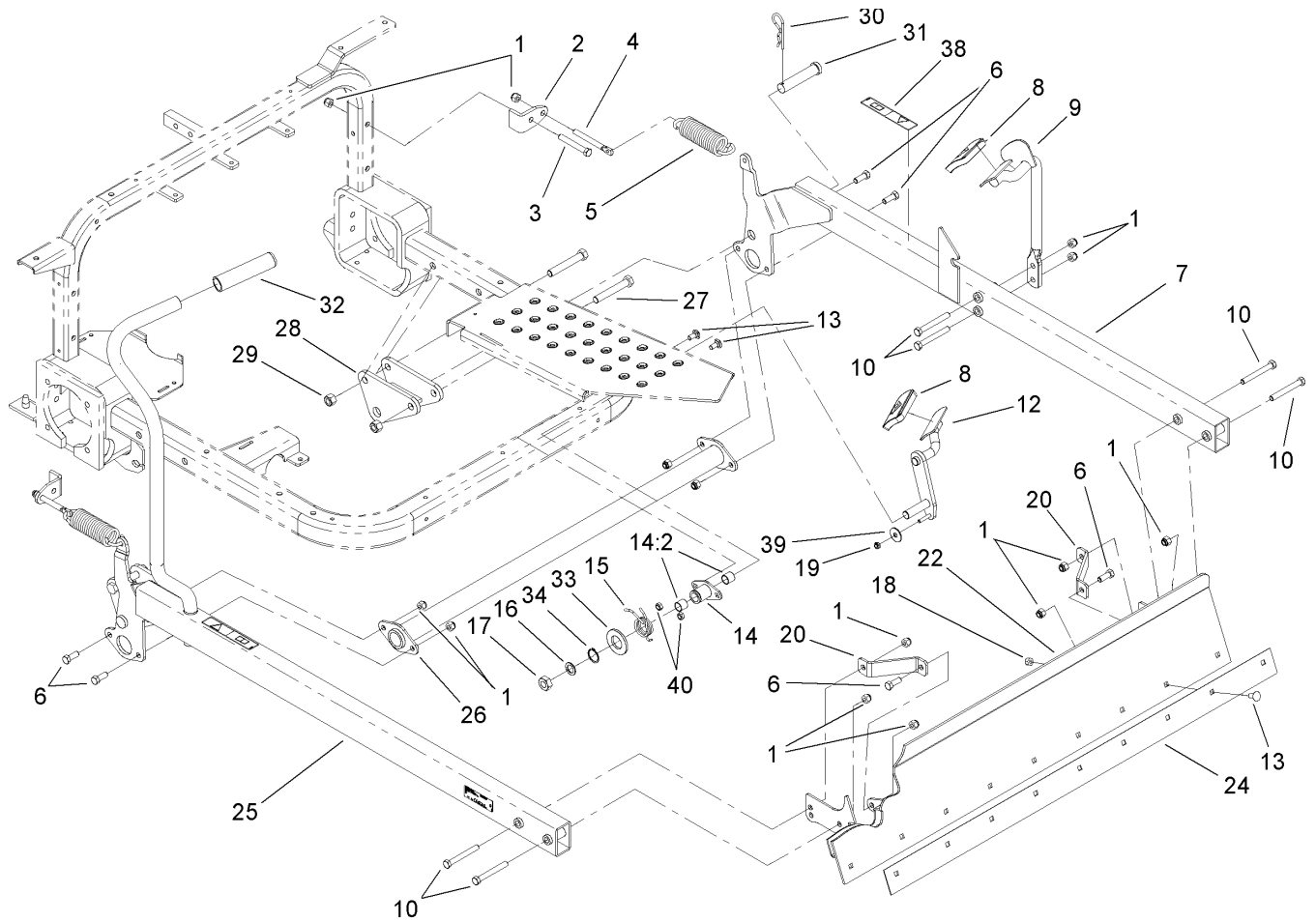
Parts in service assemblies have reference numbers in the form a:b. The a represents the reference number of the entire service assembly and the b represents a sequential number unique to each part within the service assembly.

For example, a wheel assembly might be identified by reference number 6, the tire by 6:1, the valve by 6:2, and the wheel by 6:3. When you order the assembly identified by reference number 6, you receive all parts identified by reference numbers 6:1, 6:2, and 6:3. However, you may also order any part individually. Reference numbers of this type appear in illustrations and in part lists.

### Reference Numbers Indicating Quantity

In an illustration, if a reference number indicates more than one part, the reference number has the form nX y. The n represents the quantity of the part, the X is the multiplication symbol, and the y represents the reference number.

For example, in an illustration, the reference number 2X 37 means that two of the parts identified by reference number 37 are indicated.



## Manual Blade Assembly

Ref	Part No.	Qty.	Description
1	3296-39	16	Nut-Lock, NI
2	108-5414	2	Bracket-Spring
3	323-13	2	Screw-HH
4	108-5413	2	Rod-Spring
5	108-5412	2	Spring-Extension
6	323-6	6	Screw-HH
7	108-1230-03	1	LH Lift Arm ASM
8	74-9100	2	Pad-Pedal, Forward
9	108-5429-03	1	Foot Pedal ASM
10	323-14	6	Screw-HH
12	108-5418-03	1	Lock Lever ASM
13	3230-1	11	Bolt-CARR
14	108-5421	1	Plate ASM
14:2	256-311	2	Bushing-Split
15	108-5424-03	1	Spring-Torsion
16	3256-69	1	Washer-Flat
17	3296-33	1	Nut-Lock, NI
18	3296-29	9	Nut-Lock, NI
19	3296-56	1	Nut-Lock, NI
20	108-5409	2	Plate-Brace
22	108-1225-03	1	Blade ASM
24	108-5406-03	1	Plate-Wear
25	108-1226-03	1	RH Lift Arm ASM
26	108-5402-03	1	Torsion Tube ASM

Ref	Part No.	Qty.	Description
27	325-13	4	Screw-HH
28	108-5427-03	2	Mount ASM
29	3296-25	4	Nut-Lock, NI
30	3290-343	2	Pin-Hair
31	108-2800	2	Pin-Clevis
32	104-9838	1	Grip-Foam
33	3256-62	1	Washer-Flat
34	32151-29	1	Ring-Retaining
38	93-9879	2	Decal-Warning
39	3256-35	1	Washer-Flat
40	3296-47	2	Nut-Lock, NI