



Front Remote Hydraulic Kit

For Sand/Infield Pro 5040 Traction Unit

Model No. 08782

Installation Instructions

Note: The Sand/Infield Pro 5040 traction unit must be equipped with the Rear Remote Hydraulic Kit, Model 08781 and the Front Lift Frame, Model 08712.

Note: Determine the left and right sides of the machine from the normal operating position.

Loose Parts

Use the chart below to verify that all parts have been shipped.

Step	Description	Qty.	Use
1	No parts required	–	Prepare the machine.
2	No parts required	–	Drain the hydraulic reservoir.
3	No parts required	–	Remove the left rear tire and the shrouds.
4	90 degree elbow fitting	2	Install fittings to the valve.
5	Coupler assembly Screw Nut	1 2 2	Install the coupler assembly to the front lift frame.
6	Hydraulic hose	2	Install the hydraulic hoses.
7	No parts required	–	Tighten all connections.
8	No parts required	–	Check the hydraulic oil level and check for leaks.

Step

1

Preparing the Machine

No Parts Required

Procedure

Thoroughly clean the machine. All debris must be removed to ensure the mounting brackets will fit properly and that no dirt or debris gets into the hydraulic system.

Step

2

Draining the Hydraulic Reservoir

No Parts Required

Procedure

Drain the hydraulic tank. Refer to the machine *Operator's Manual*.

Step

3

Removing the Left Rear Tire and the Shrouds

No Parts Required

Procedure

1. Raise the rear of the machine off the ground and block up the rear of the machine. Refer to the machine *Operator's Manual* under Jacking the Machine.
2. Remove the left rear tire.
3. Remove the flange-head screws securing the left-hand wheel shroud to the frame (Figure 1). Remove and retain the shroud.

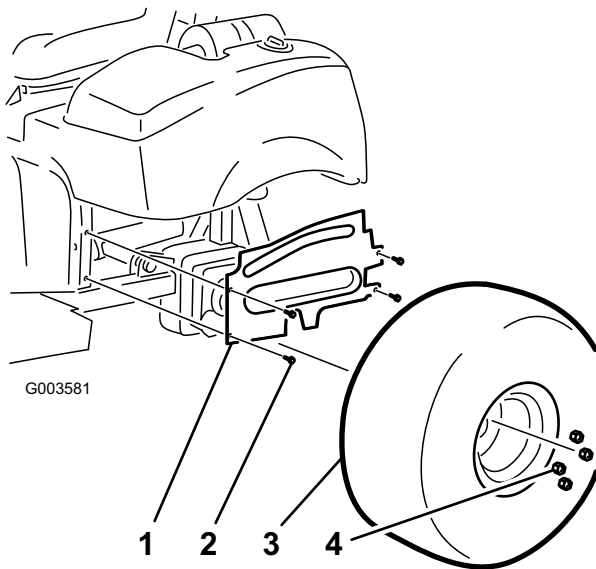


Figure 1

1. Left-hand wheel shroud
2. Flange-head screws
3. Tire
4. Nut

4. Remove the socket head screws securing the center shroud to the frame (Figure 2). Remove and retain the shroud.

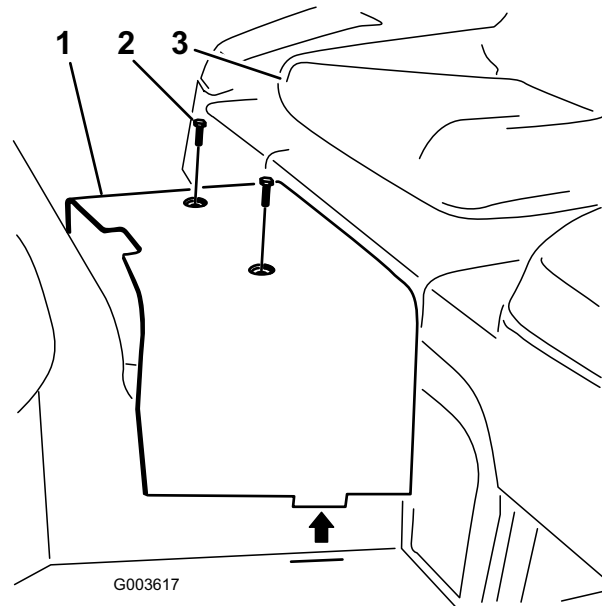


Figure 2

1. Center shroud
2. Flange-head screws
3. Seat

Step

4

Installing Fittings to the Valve

Parts needed for this step:

2	90 degree elbow fitting
---	-------------------------

Procedure

Note: Install all fittings and hydraulic hoses loosely first and then tighten them when everything is installed. Install the fittings at the angles shown in the figures.

Note: Make sure all O-rings are lubricated and properly positioned on all fittings before installation.

1. Remove the 2 cap plugs from the rear remote hydraulic valve (Figure 3).

Note: Use a backup wrench when loosening the plugs.

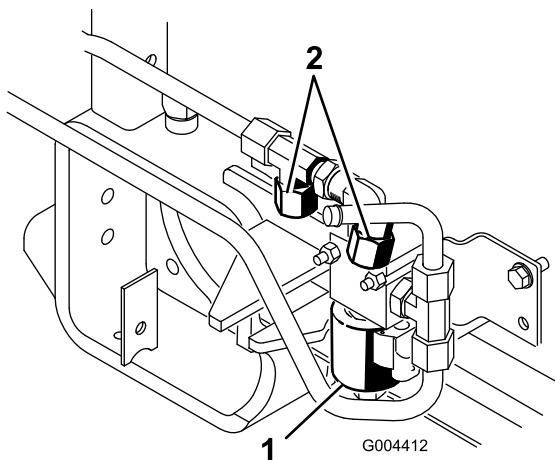


Figure 3

1. Rear remote hydraulic valve 2. Cap plugs

2. Install the 90 degree elbow fittings to the valve at the angles shown (Figure 4).

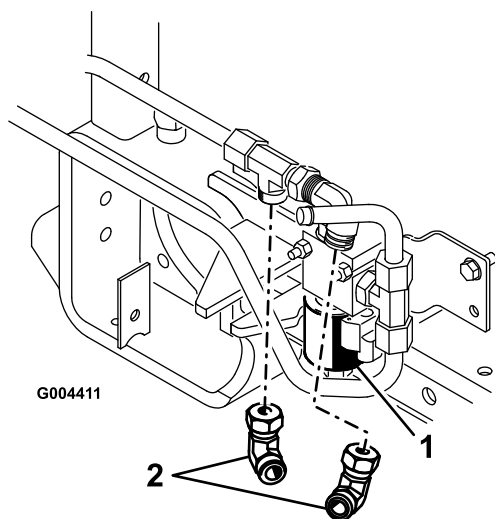


Figure 4

1. Rear remote hydraulic valve 2. 90 degree elbow fitting

Step 5

Installing the Coupler Assembly to the Front Lift Frame

Parts needed for this step:

1	Coupler assembly
2	Screw
2	Nut

Procedure

Mount the coupler assembly mounting bracket to the front lift frame tube with 2 screws and nuts (Figure 5).

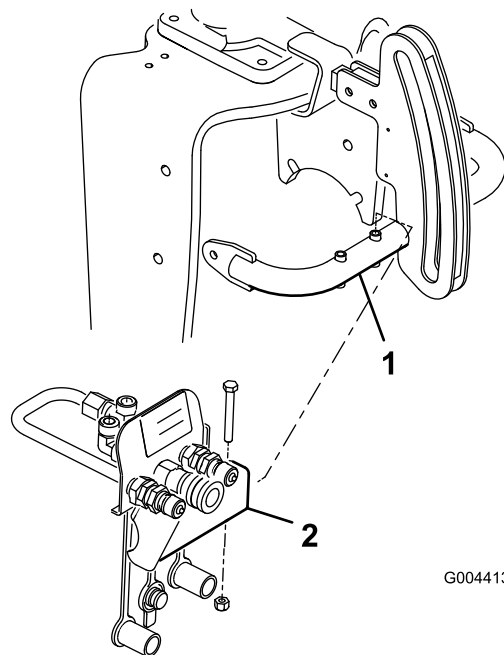


Figure 5

1. Front lift frame tube 2. Coupler assembly mounting bracket

Step

6

Install the Hydraulic Hoses

Parts needed for this step:

2	Hydraulic hose
---	----------------

Procedure

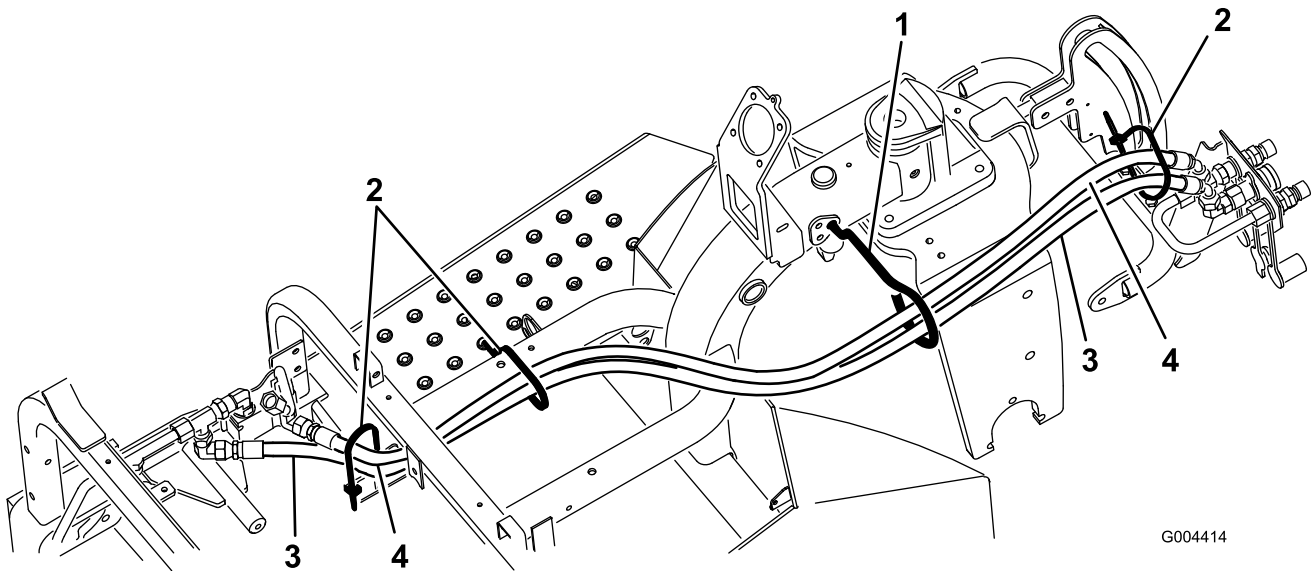
Note: Install all hydraulic hoses loosely first and then tighten them when everything is installed.

1. Connect the swivel end of longer hydraulic hose to the elbow fitting on the coupler assembly (Figure 6).

2. Connect the swivel end of shorter hydraulic hose to the tee fitting on the coupler assembly (Figure 6).
3. Route the hoses through the hose guide and to the valve (Figure 6).
4. Connect the longer hydraulic hose to the rear fitting on the valve (Figure 6).
5. Connect the shorter hydraulic hose to the front fitting on the valve (Figure 6).

Note: If the hoses are not installed properly damage to the driven attachment could occur.

Note: Make sure that nothing rubs against any hoses. If hoses do contact each other, make sure they are restrained.



G004414

Figure 6

1. Hose guide
2. Cable ties

3. Longer hydraulic hose
4. Shorter hydraulic hose

Step

7

Tightening all Connections

No Parts Required

Procedure

Note: Make sure the hoses are routed away from and to do not rub against any sharp, hot, or moving components.

1. When the hydraulic hoses are installed, tighten all of the connections.
2. Secure the hoses with cable ties at the locations shown in Figure 6.

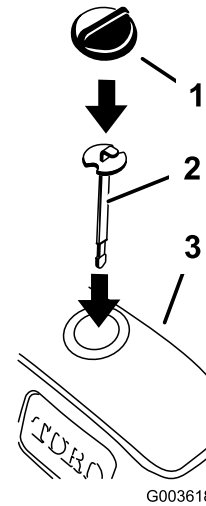


Figure 7

1. Hydraulic tank cap
2. Dipstick
3. Hydraulic tank

Step

8

Installing the Hydraulic Oil and Checking for Leaks

No Parts Required

Procedure

1. Remove the dipstick from the hydraulic tank and wipe it clean.
2. Insert the dipstick into the tank and remove it to check the hydraulic oil level (Figure 7).
3. Slowly add the additional oil to bring it to the **Full** mark.

4. Start the machine and let it run for 5 minutes.
5. Check for any leaks in the system with a piece of cardboard. Hydraulic fluid escaping under pressure can penetrate skin and cause injury.

Note: Make sure the hoses are routed away from and to do not rub against any sharp, hot, or moving components.



Hydraulic fluid escaping under pressure can penetrate skin and cause injury.

- If hydraulic fluid is injected into the skin it must be surgically removed within a few hours by a doctor familiar with this type of injury. Gangrene may result if this is not done.
- Keep body and hands away from pin hole leaks or nozzles that eject high pressure hydraulic fluid.
- Use cardboard or paper to find hydraulic leaks.
- Safely relieve all pressure in the hydraulic system before performing any work on the hydraulic system.
- Make sure all hydraulic fluid hoses and lines are in good condition and all hydraulic connections and fittings are tight before applying pressure to hydraulic system.

6. Install the front shroud to the frame with the flange-head screws previously removed.
7. Install the left-hand wheel shroud to the frame with the flange-head screws previously removed (Figure 8).
8. Install the left rear tire (Figure 8).

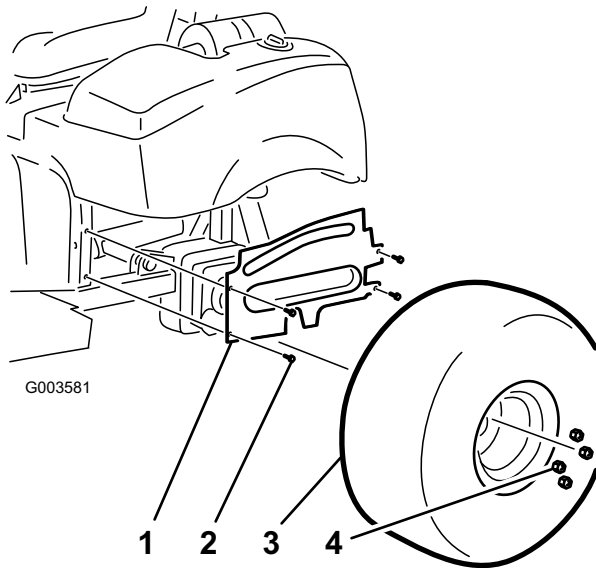


Figure 8

- | | |
|---------------------------|--------------|
| 1. Left-hand wheel shroud | 3. Left tire |
| 2. Flange-head screws | 4. Nut |

-
9. Lower the machine onto the ground.

Note: Do not operate the front remote hydraulic kit and the rear remote hydraulic kit at the same time.



Count on it.