



Weight Kit

For Z593D Z Master with DFS Vac Collection System

Model No. 110-3860

Installation Instructions

Note: To comply with ANSI/OPEI B71.4-2004 Standard, this weight must be added when a DFS Vac Collection System is installed on a Z593D Z Master with 52 inch mower.

Note: Determine the left and right sides of the machine from the normal operating position.

Step

1

Installing the Weight

Parts needed for this step:

1	Weight
2	U-bolt
4	Locknut, (3/8 inch)
4	Washer, (3/8 inch)

Procedure

1. Raise the foot pan and then remove the footrest from the machine (Figure 1).

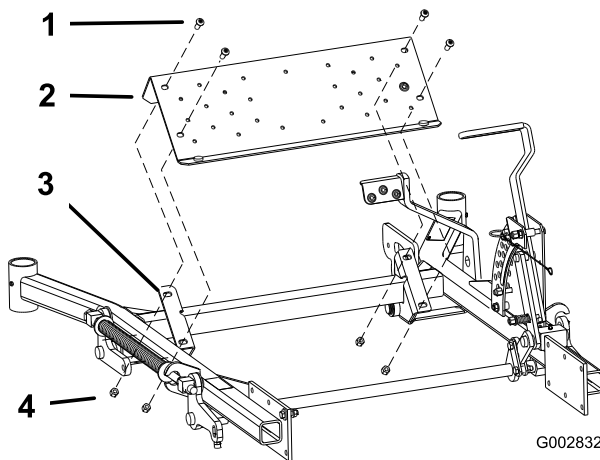
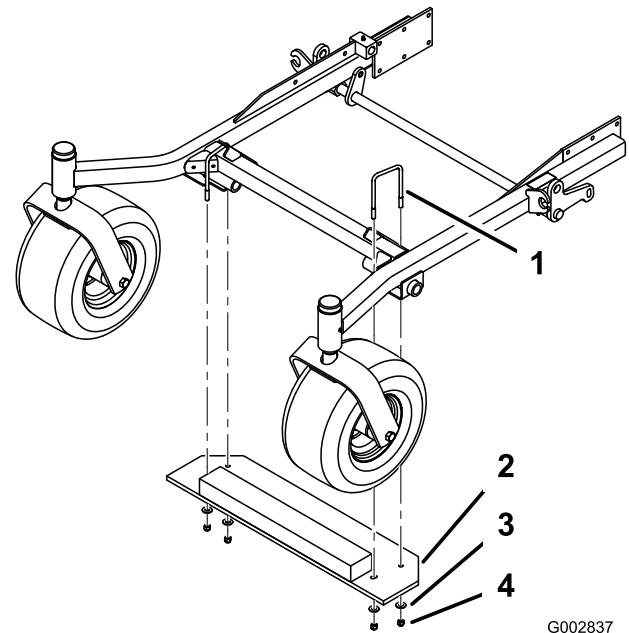


Figure 1

1. Bolt
2. Footrest
3. Machine frame
4. Nut



G002837

Figure 2

1. U-bolt, (3/8 x 5 inch)
2. Weight
3. Washer, (3/8 inch)
4. Nut, (3/8 inch)

2. Install the weight onto the machine frame with 2 U-bolts (3/8 x 5 inch), 4 washers (3/8 inch), and 4 nuts (3/8 inch) (Figure 2).
3. Install the footrest onto the machine and lower the footpan (Figure 1).