



Topdresser 1800 Workman® 3000/4000

Model No. 44225 - 260000001 and up.

Parts Catalog

Ordering Replacement Parts

To order replacement parts, please supply the part number, the quantity, and the description of each part desired.

Understanding Reference Numbers

Each identified part in an illustration has a reference number. The reference number for a part also appears in the parts list, along with other information about the part.

This catalog uses two special reference number formats, one to indicate parts in a service assembly and another to indicate the quantity of a given part in an illustration.

Service Assembly Reference Numbers

Parts in service assemblies have reference numbers in the form a:b. The a represents the reference number of the entire service assembly and the b represents a sequential number unique to each part within the service assembly.

For example, a wheel assembly might be identified by reference number 6, the tire by 6:1, the valve by 6:2, and the wheel by 6:3. When you order the assembly identified by reference number 6, you receive all parts identified by reference numbers 6:1, 6:2, and 6:3. However, you may also order any part individually. Reference numbers of this type appear in illustrations and in part lists.

Reference Numbers Indicating Quantity

In an illustration, if a reference number indicates more than one part, the reference number has the form nX y. The n represents the quantity of the part, the X is the multiplication symbol, and the y represents the reference number.

For example, in an illustration, the reference number 2X 37 means that two of the parts identified by reference number 37 are indicated.

Contents

Description	Page	Description	Page
Base Assembly 3	Brush and Motor Assembly 6
Slider Bed and Roller Assembly 4	Hopper Assembly 8
Gate Assembly 5	Gate Slide and Brush Guard Assembly 9
		Chain, Sprocket and Guard Assembly 10

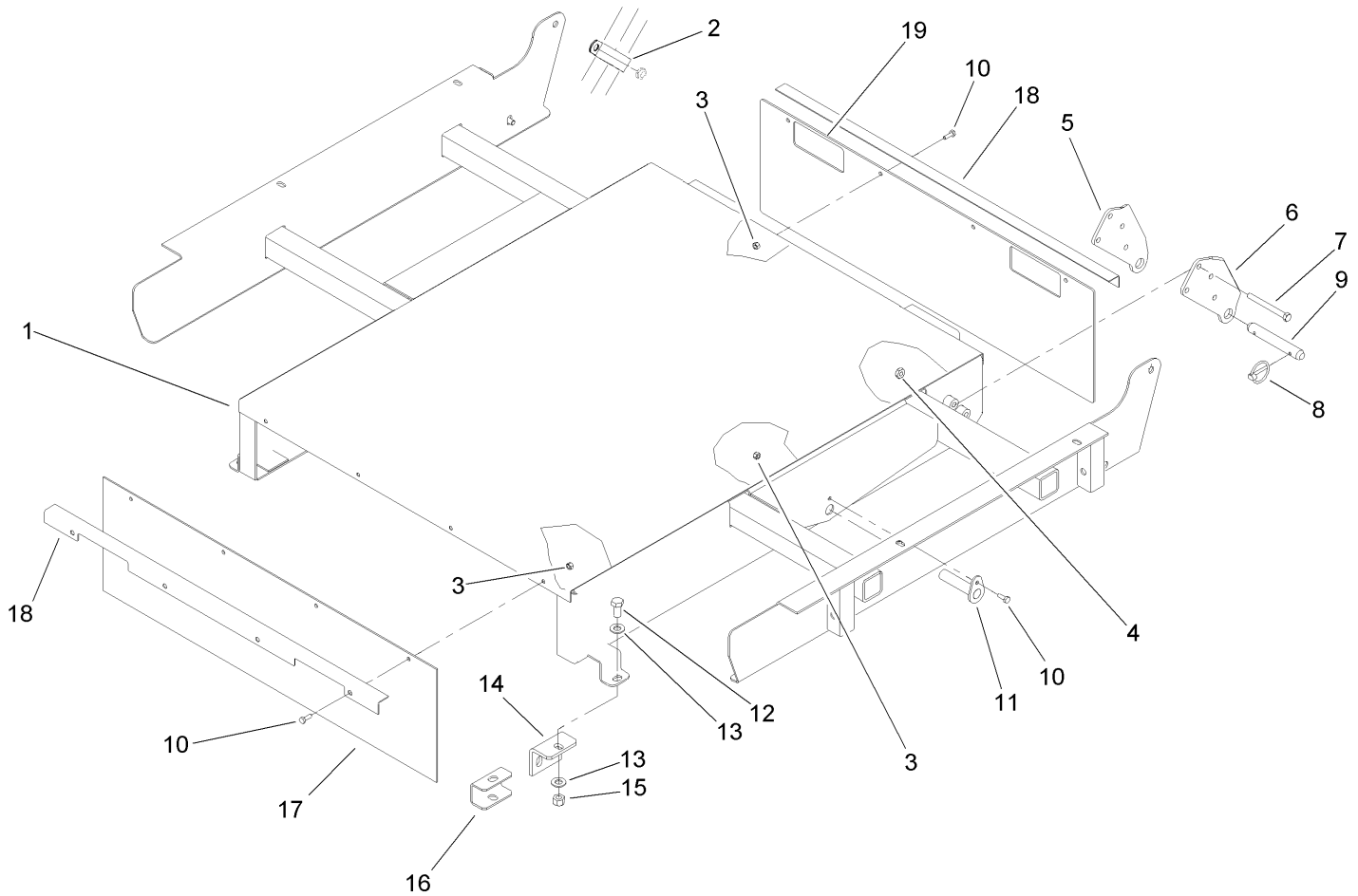
Part Description Abbreviations

Part descriptions in this catalog may include the following abbreviations.

AR. as required	INC. incorporated
ASM. assembly	LH. left hand
BBC. blade brake clutch	NI. nylon insert
CARR. carriage	NPTF. national pipe thread fine
DEG. degrees	PFH. phillips flat head
EXT. external	PPH. phillips pan head
FH. flat head	PPHTF. phillips pan head thread forming
GA. gauge	PRH. phillips round head
HF. hex flange	PTH. phillips truss head
HH. hex head	PTO. power-take-off
HHF. hex head flange	RH. right hand
HHFTF. hex head flange thread forming	ROPS. roll-over-protection-system
HJ. hex jam	SFH. slotted fillister head
HLH. hex lag head	SHH. slotted hex head
HOC. height-of-cut	SHWH. slotted hex washer head
HSBH. hex socket button head	SPH. slotted pan head
HSFH. hex socket flat head	SQH. square head
HSH. hex socket head	SRH. slotted round head
HWH. hex washer head	STD. standard
HWHTF. hex washer head thread forming	TAP. self tapping
HYD. hydraulic	TTH. torx truss head

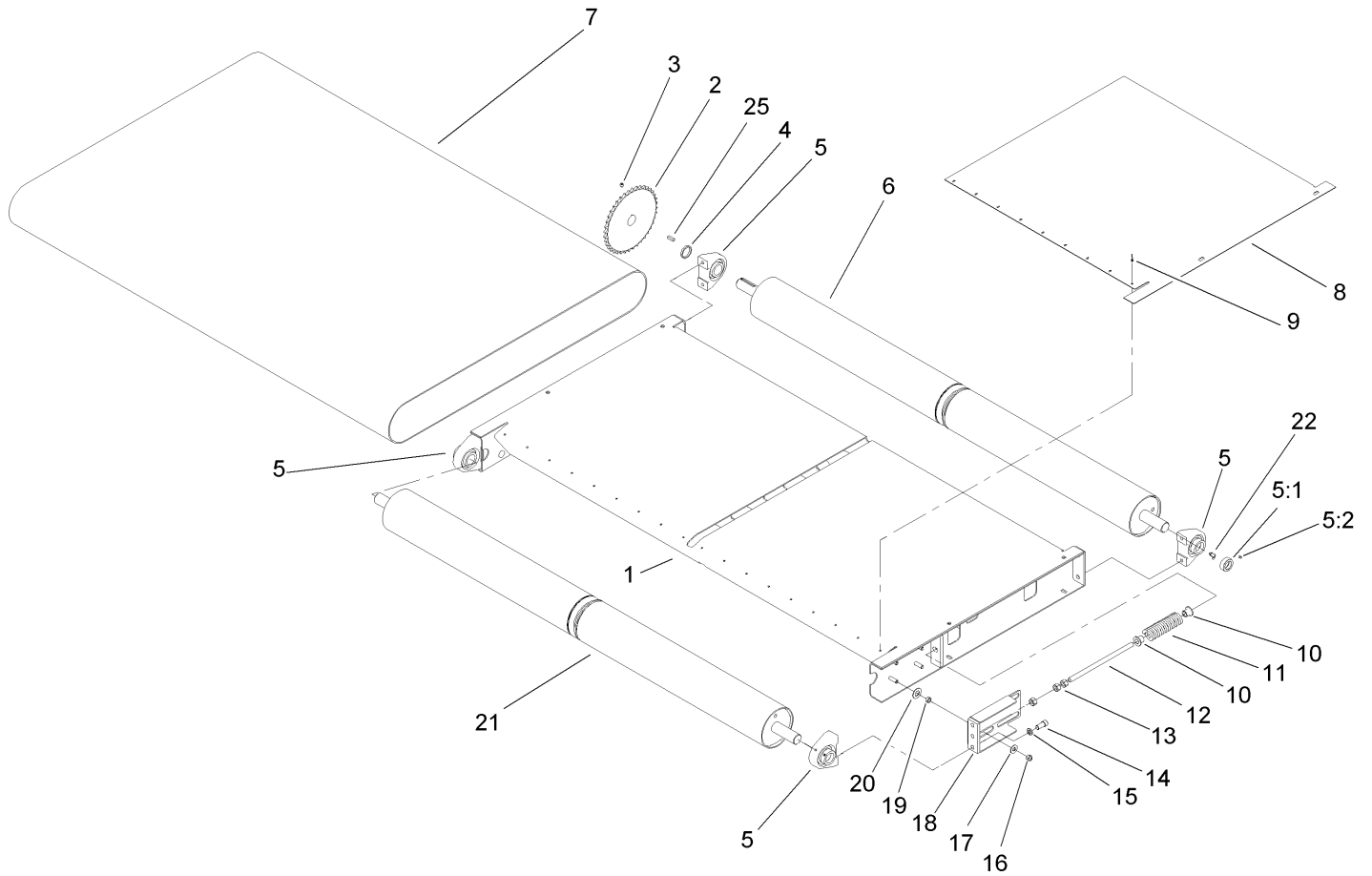
Footnotes

- ❶ Not illustrated



Base Assembly

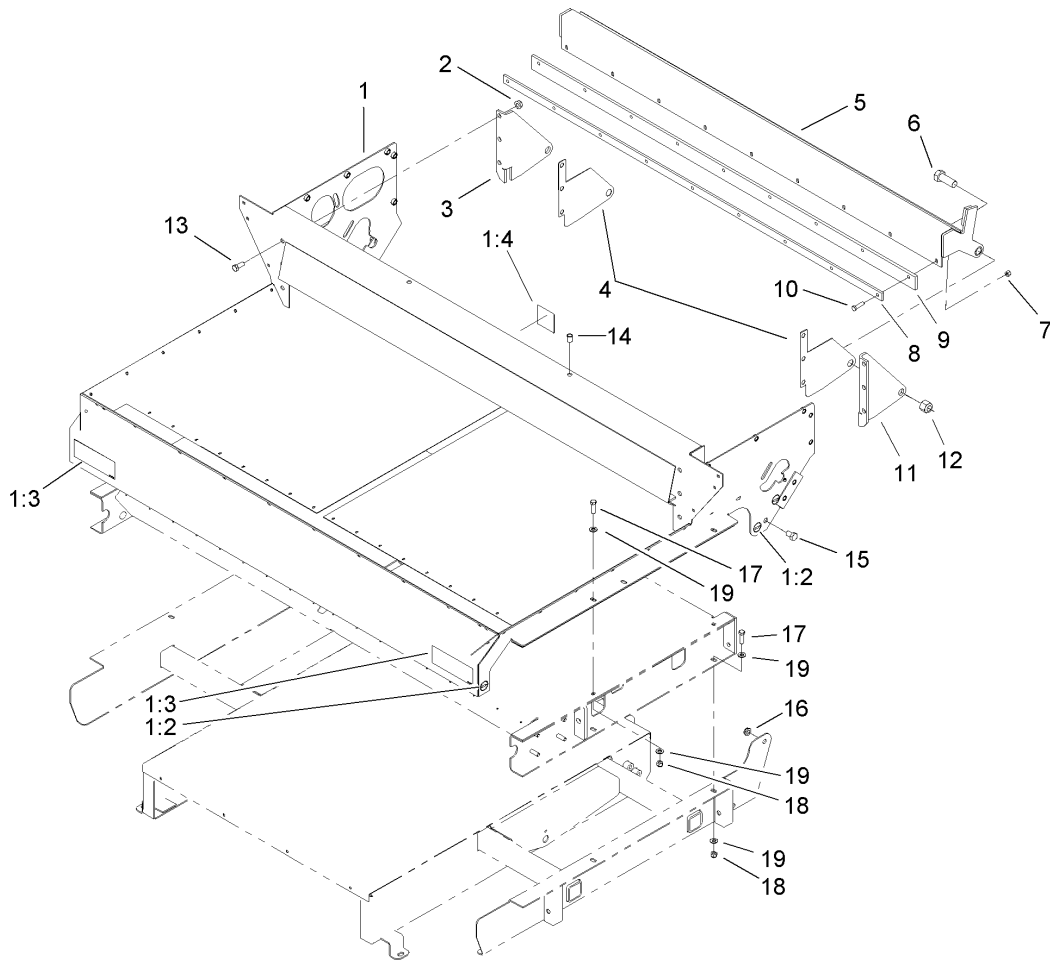
Ref	Part No.	Qty.	Description
1	106-7857-01	1	Base ASM
2	100-1424	1	Clamp-R
3	3296-42	10	Nut-Lock, NI
4	3296-44	8	Nut-Lock, NI
5	93-9721-03	2	Bracket-Pivot, Long (RH)
6	93-9720-03	2	Bracket-Pivot, Long (LH)
7	323-42	8	Screw-HH
8	92-1298	4	Pin-Lynch
9	92-1233	2	Pin-Clevis
10	321-4	10	Screw-HH
11	92-4459	2	Pin-Cylinder
12	325-4	4	Screw-HH
13	3256-26	8	Washer-Flat
14	92-2667-03	2	Bracket-Attachment, Mount
15	3296-25	4	Nut-Lock, NI
16	92-4576	2	Spacer-Mount
17	100-1423	1	Cover-Rubber
18	106-7859-01	2	Clamp-Rubber
19	106-7860	1	Cover-Rubber



Slider Bed and Roller Assembly

Ref	Part No.	Qty.	Description
1	99-0038-01	1	Frame-Bed, Slider
2	99-0166-03	1	Sprocket-Driven
3	3246-3	2	Screw-HSH
4	99-0017-01	1	Spacer-Sprocket
5	99-0158	4	Bearing-Base, Tapped
5:1	251-246	1	Collar W/Set Screws
5:2	106-9662	1	Screw-Set, Hs
6	99-0046	1	Roller-Rear
7	100-1425	1	Belt Kit
8	99-0047	2	Plate-Wear
9	3269-28	18	Rivet-Pop
10	100-1414	4	Holder-Spring
11	99-0163	2	Spring-Compression
12	99-0118	2	Pin-Spring
13	3217-9	6	Nut-Hex
14	100-1438	8	Screw-Socket Head, Torx
15	3253-6	8	Washer-Lock
16	3296-39	8	Nut-Lock, NI
17	3256-4	8	Washer-Flat
18	99-0050-01	2	Spring Plate ASM
19	99-0052	8	Washer-Slide
20	100-1401	8	Spacer-Slide, Spring
21	99-0044	1	Roller-Front
22	302-60	4	Fitting-Grease, 90 DEG

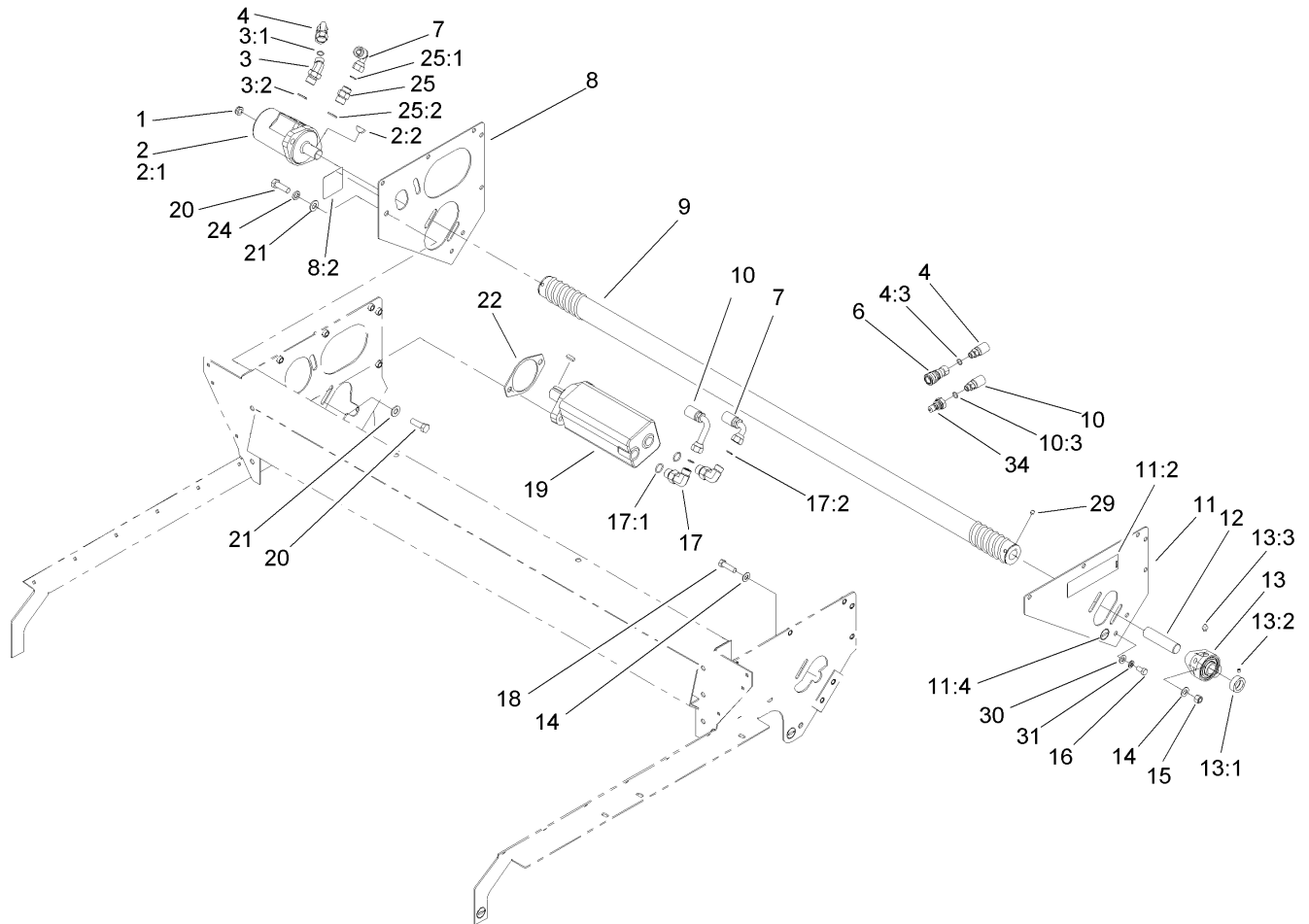
Ref	Part No.	Qty.	Description
25	10-7070	1	Key-Square



Gate Assembly

Ref	Part No.	Qty.	Description
1	100-1435	1	Hopper Frame ASM
1:2	58-6520	4	Decal-Grease
1:3	93-9092	2	Decal-Warning
1:4	105-4586	1	Decal-Shield
2	32128-37	6	Nut-HF
3	99-0079-01	1	Bracket-Gate Pivot, RH
4	99-0117	2	Wareplate-Gate
5	99-0068-01	1	Gate ASM
6	328-24	2	Screw-HH
7	3296-29	9	Nut-Lock, NI
8	99-0089-01	1	Plate-Backing
9	99-0074	1	Seal-Gate
10	322-6	9	Screw-HH
11	99-0078-01	1	Bracket-Gate Pivot, LH
12	3296-51	2	Nut-Lock, NI
13	324-4	6	Screw-HH
14	32148-9	2	Insert-Nut
15	325-2	2	Screw-HH
16	3296-45	2	Nut-Lock, NI
17	323-7	8	Screw-HH
18	3296-39	8	Nut-Lock, NI
19	3256-24	16	Washer-Flat

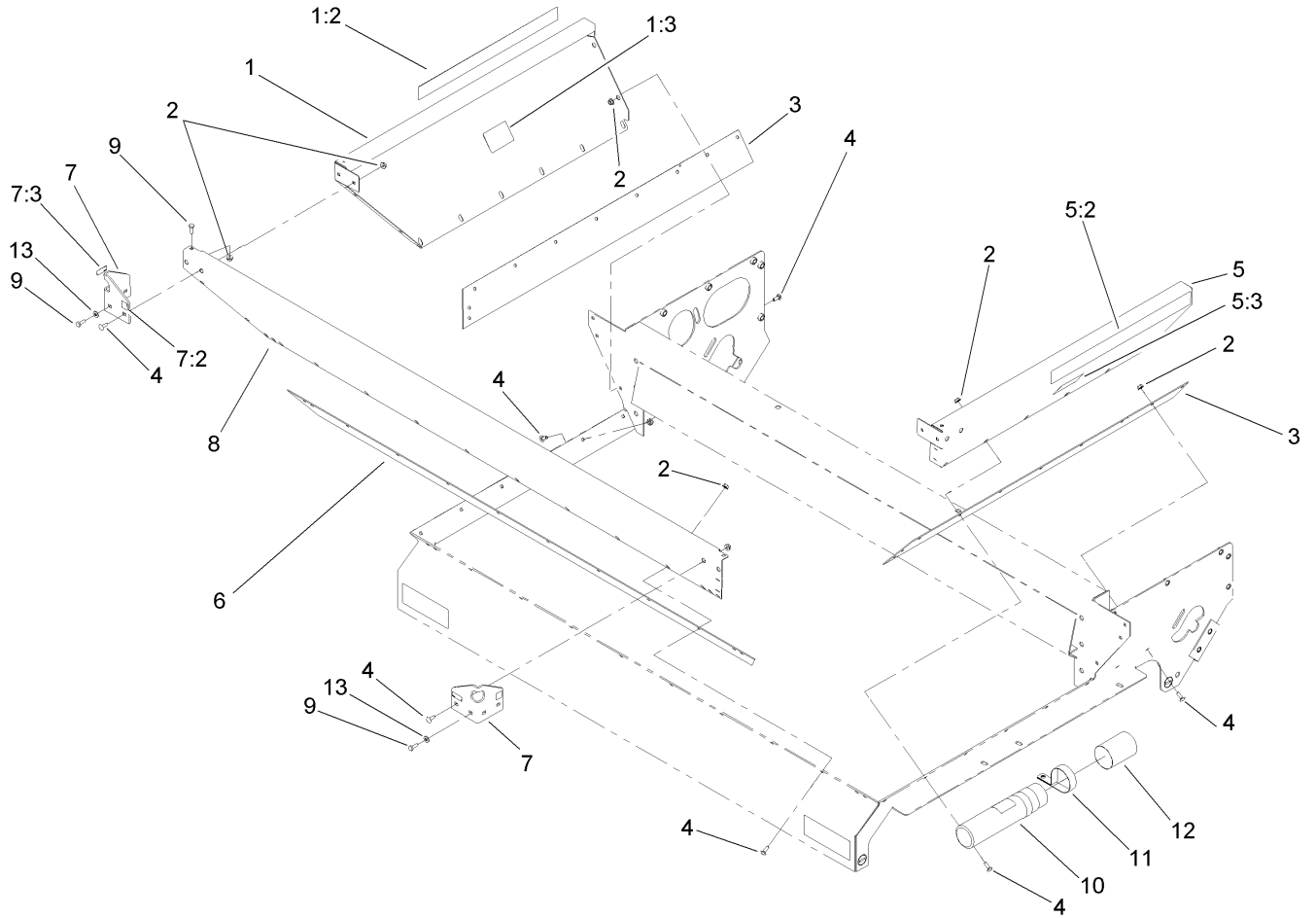
--	--	--	--



Brush and Motor Assembly

Ref	Part No.	Qty.	Description
1	3296-23	2	Nut-Lock, NI
2	99-0156	1	HYD Motor ASM
2:1	100-1446	1	Seal Kit
2:2	3257-8	1	Key-Woodruff
3	340-89	1	Fitting-HYD, 45 DEG
3:1	237-30	1	O-Ring
3:2	237-80	1	O-Ring
4	110-1962	1	HYD Hose ASM
4:3	237-42	1	O-Ring
6	106-7968	1	Coupler-Quick, Female
7	99-0177	1	Hose-HYD
8	100-1431	1	RH Motor Brace ASM
8:2	105-4586	1	Decal-Shield
9	99-0162	1	Brush
10	110-1963	1	HYD Hose ASM
10:3	237-42	1	O-Ring
11	100-1430	1	LH Motor Brace ASM
11:2	106-7750	1	Decal-Danger
11:4	58-6520	1	Decal-Grease
12	99-0041	1	Shaft-Brush
13	99-0160	1	Bearing
13:1	251-249	1	Collar W/Set Screws
13:2	3245-35	1	Screw-Set
13:3	302-2	1	Fitting-Grease

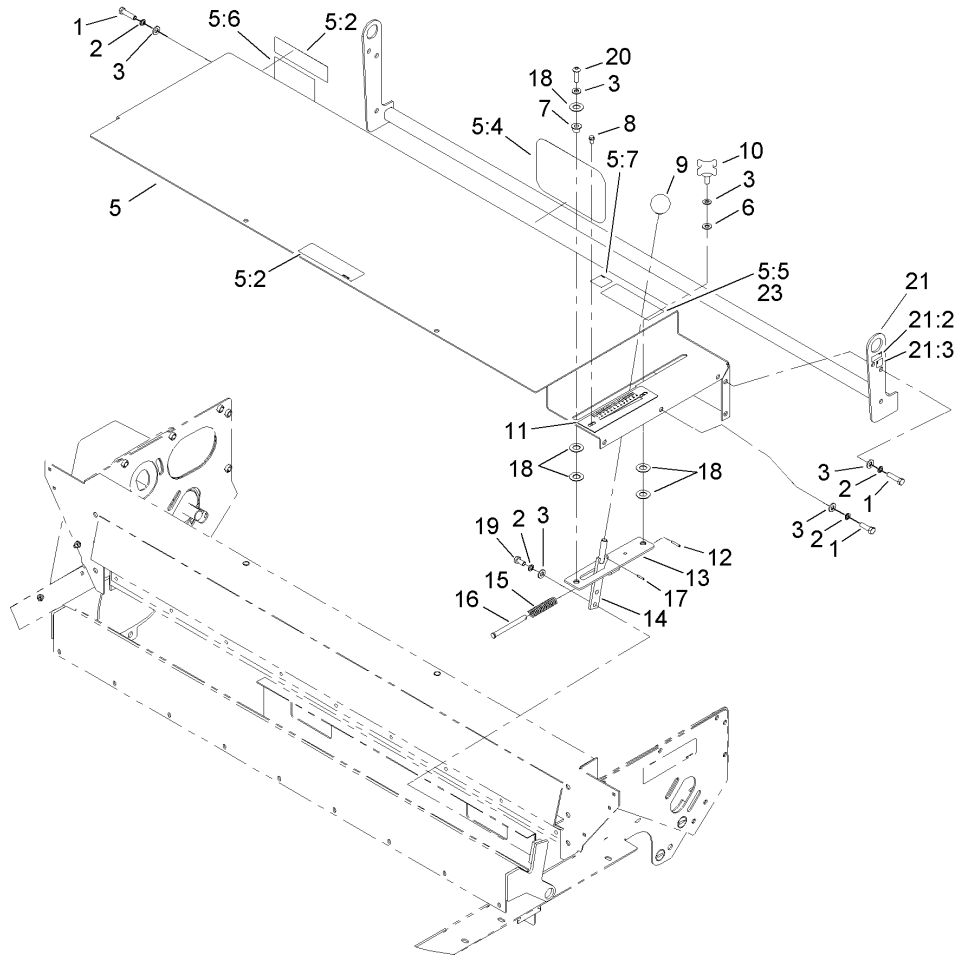
Ref	Part No.	Qty.	Description
14	3256-25	4	Washer-Flat
15	3296-48	2	Nut-Lock, NI
16	323-4	4	Screw-HH
17	340-105	2	Fitting-HYD, 90 DEG
17:1	237-80	1	O-Ring
17:2	237-30	1	O-Ring
18	324-6	2	Screw-HH
19	99-0155	1	HYD Motor Conveyor ASM
19:1	56-6890	1	Seal Kit
19:2	10-7070	1	Key-Square
20	325-7	4	Screw-HH
21	3256-26	4	Washer-Flat
22	99-0116	1	Plate-Spacer
24	3253-7	2	Washer-Lock
25	340-6	1	Fitting-HYD, Straight
25:1	237-30	1	O-Ring
25:2	237-80	1	O-Ring
29	3246-3	4	Screw-HSH
30	3256-24	4	Washer-Flat
31	3253-21	4	Washer-Lock
34	106-7969	1	Coupler-Quick, Male



Hopper Assembly

Ref	Part No.	Qty.	Description
1	100-1434	1	RH Hopper Panel ASM
1:2	99-0013	1	Decal
1:3	94-1235	1	Decal-Capacity
2	32128-33	44	Nut-HF
3	99-0142	2	Seal-Sand, Side
4	3229-25	38	Screw-CARR
5	100-1433	1	LH Hopper Panel ASM
5:2	99-0013	1	Decal
5:3	94-1235	1	Decal-Capacity
6	99-0143	1	Seal-Sand, Front
7	100-1428	2	Front Lift Eye ASM
7:2	93-9084	1	Decal-Point, Lift
7:3	93-9529	1	Decal-Value, Kg
8	99-0020	1	Panel-Hopper, Front
9	321-4	6	Screw-HH
10	104-7050	1	Housing-Manual
11	2412-133	2	R-Clamp
12	104-7048	1	Cap-Housing
13	3256-22	2	Washer-Flat

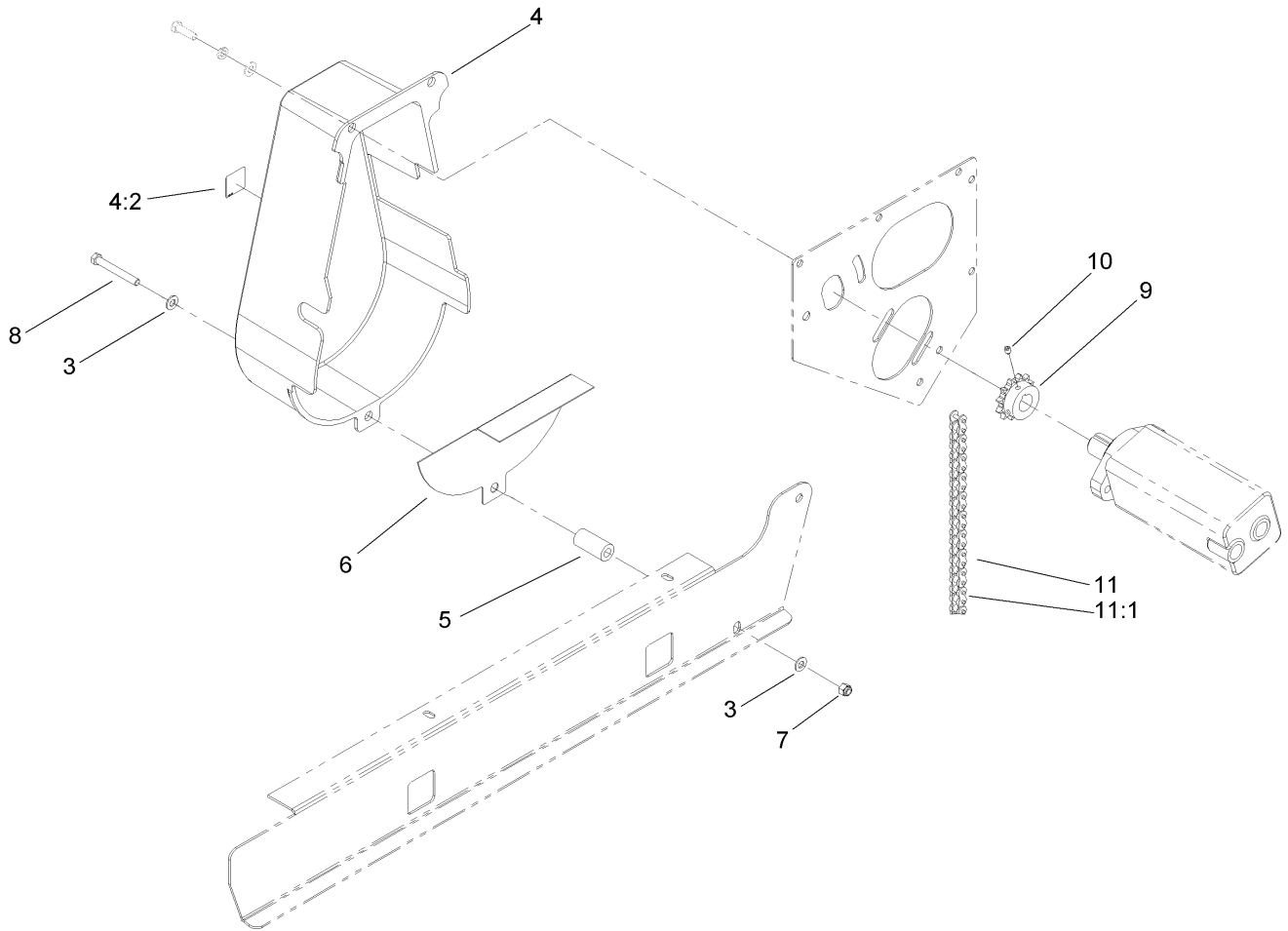
--	--	--	--



Gate Slide and Brush Guard Assembly

Ref	Part No.	Qty.	Description
1	323-7	12	Screw-HH
2	3253-21	14	Washer-Lock
3	3256-24	15	Washer-Flat
5	100-1432	1	Brush Guard ASM
5:2	106-7750	2	Decal-Danger
5:4	92-1242	1	Decal
5:5	105-0707	1	Decal-Ansi
5:6	105-0708	1	Decal-Danger
5:7	98-3114	1	Decal-Warning
6	95-4896	1	Washer-Nylon
7	256-259	1	Bushing-Flange
8	93-6083	2	Screw-HWH
9	233-48	1	Knob
10	100-1449	1	Knob
11	100-1416	1	Plate-Gate
12	32121-45	1	Pin-Spring
13	99-0073-03	1	Slide Block Plate ASM
14	100-1406-03	1	Gate Handle ASM
15	100-1448	1	Spring-Gate
16	100-1413	1	Pin-Clevis
17	32121-40	1	Pin-Spring
18	99-0052	5	Washer-Slide
19	323-4	2	Screw-HH
20	3274-63	1	Screw-HSBH

Ref	Part No.	Qty.	Description
21	106-0281	1	Bumper ASM
21:2	93-9529	2	Decal-Value, Kg
21:3	93-9084	2	Decal-Point, Lift
23	105-0698	1	Decal-Caution



Chain, Sprocket and Guard Assembly

Ref	Part No.	Qty.	Description
3	3256-24	2	Washer-Flat
4	105-0745	1	Guard-Chain
4:2	98-3114	1	Decal-Warning
5	100-1442	1	Spacer-Guard
6	106-2326-03	1	Guard-Finger
7	3296-39	1	Nut-Lock, NI
8	323-14	1	Screw-HH
9	99-0165-03	1	Sprocket-Drive
10	3246-3	2	Screw-HSH
11	99-0164	1	Chain-Roller
11:1	2710-16	1	Link-Chain

--	--	--	--

NOTES

NOTES

