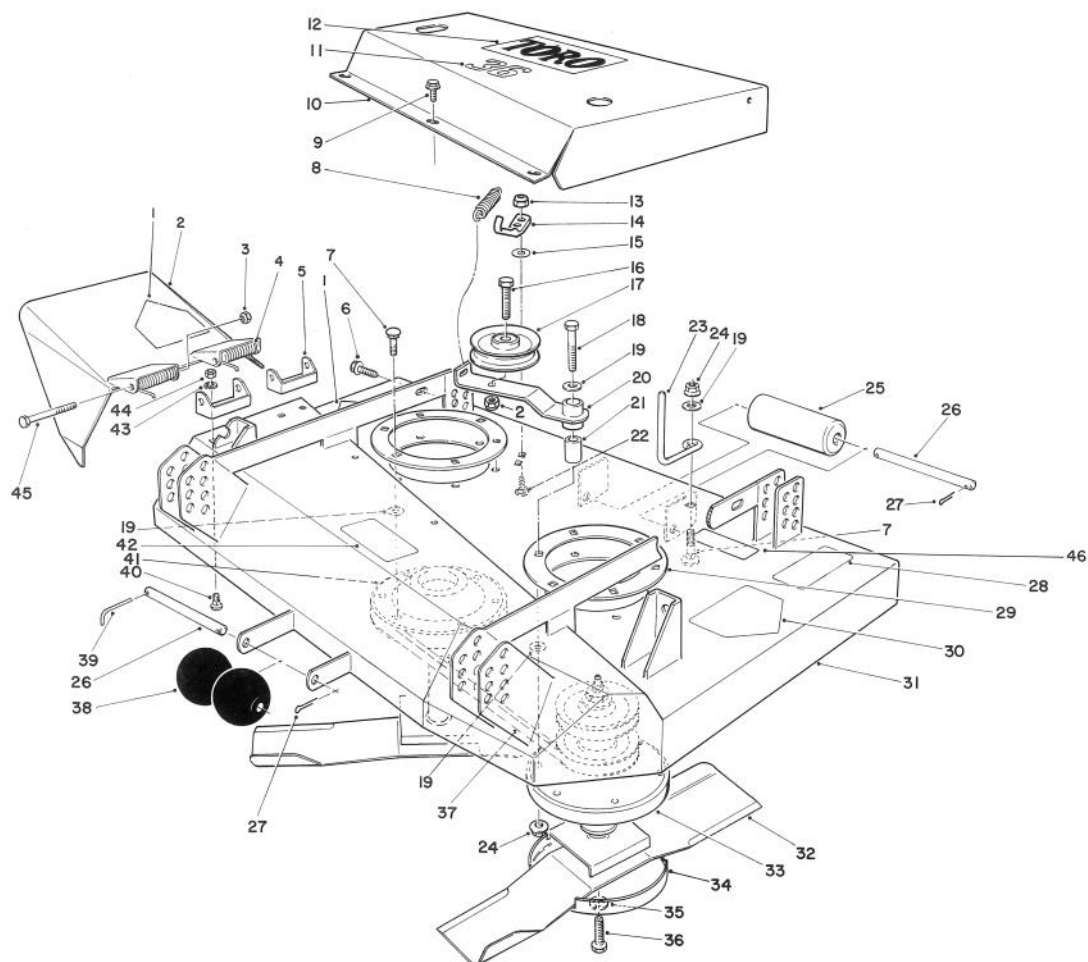




MODEL NO. 30136-9000001 & up

PARTS CATALOG

36" CUTTING UNIT WIDE AREA MOWER

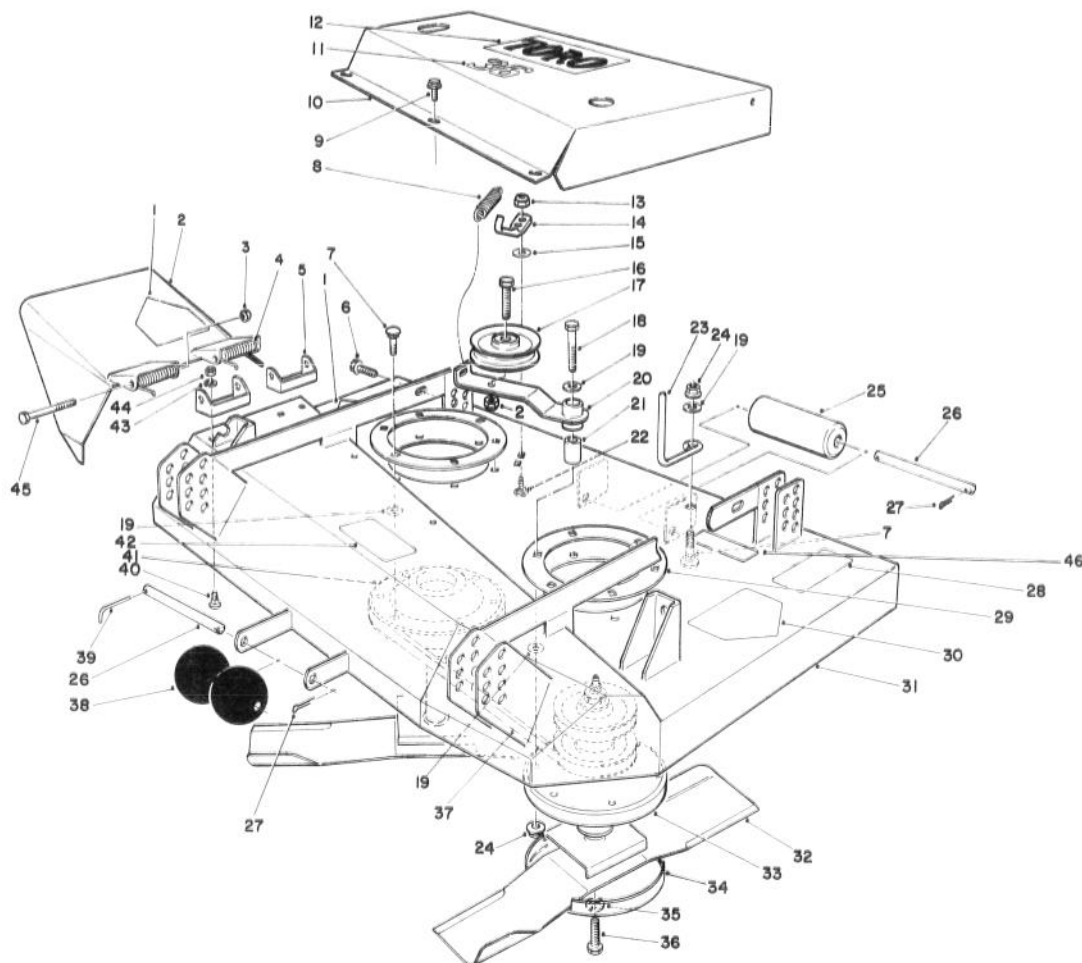


CUTTING UNIT ASSEMBLY

T-0216-89

| Ref. No. | Part No. | Description | No. Used |
|----------|----------|--------------------------------------|----------|
| 1 | 54-9220 | Decal — Caution | 2 |
| 2 | 13-3879 | Deflector — Grass (Incl. Ref. #1) | 1 |
| 3 | 3296-5 | Locknut | 3 |
| 4 | 40-6230 | Spring — Torsion | 2 |
| 5 | 29-5590 | Pivot Bracket — Deflector | 2 |
| 6 | 11-9760 | Screw — Thread Form. | 2 |
| 7 | 3231-22 | Carriage Bolt | 13 |
| 8 | 51-3650 | Spring — Idler | 1 |
| 9 | 46-8560 | Screw — Self Tapping | 4 |
| 10 | 51-3690 | Cover — Deck | 1 |
| 11 | 51-3730 | Decal — 36" | 1 |
| 12 | 62-7400 | Decal — Toro | 1 |
| 13 | 3296-29 | Nut — Lock | 2 |
| 14 | 56-4360 | Rod — Support | 1 |

| Ref. No. | Part No. | Description | No. Used |
|----------|----------|---------------------------|----------|
| 15 | 3256-2 | Flat Washer | A/R |
| 16 | 3211-5 | Capscrew — Hex Hd. | 1 |
| 17 | 51-3660 | Idler — Flat | 1 |
| 18 | 323-12 | Capscrew — Hex Hd. | 1 |
| 19 | 3256-24 | Washer — Flat | 16 |
| 20 | 56-4341 | Idler Arm | 1 |
| 21 | 51-3641 | Sleeve — Pivot Idler | 1 |
| 22 | 3230-22 | Bolt — Carriage | 2 |
| 23 | 52-4780 | Rod — Belt | 2 |
| 24 | 32128-21 | Nut — Lock | 14 |
| 25 | 36-1740 | Roller Deck | 1 |
| 26 | 40-6400 | Shaft — Roller | 2 |
| 27 | 3272-11 | Cotter Pin | 3 |
| 28 | 68-8340 | Decal — Blade Bolt Torque | 1 |



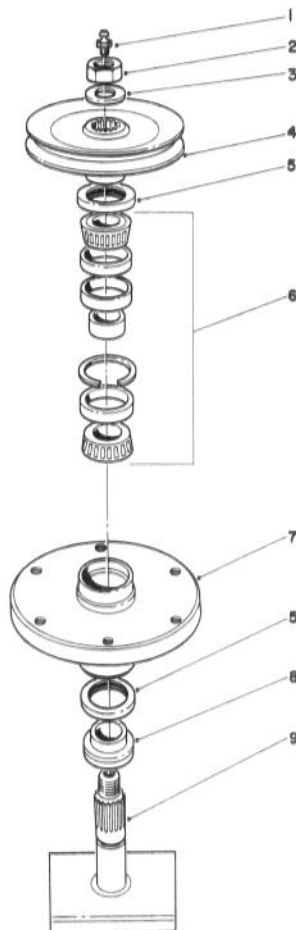
CUTTING UNIT ASSEMBLY (Continued)

T-0216-89

| Ref. No. | Part No. | Description | No. Used |
|----------|----------|------------------------------------|----------|
| 29 | 27-7680 | Ring Deck Support | 2 |
| 30 | 43-8480 | Decal — Danger | 1 |
| 31 | 13-3889 | Deck (Incl. Ref. #28, 30, 42 & 46) | 1 |
| 32 | 56-2390 | Blade — High Sail (Std.) | 2 |
| * | 27-0990 | Blade — Low Sail (Optional) | 2 |
| 33 | 54-7781 | Spindle Assembly Drive | 1 |
| 34 | 27-1000 | Cup — Scalp | 2 |
| 35 | 3253-27 | Washer — Lock | 2 |
| 36 | 44-2200 | Screw — Blade Bolt | 2 |

| Ref. No. | Part No. | Description | No. Used |
|----------|----------|----------------------|----------|
| 37 | 51-3530 | Belt Deck Drive | 1 |
| 38 | 29-4820 | Roller — Deck | 2 |
| 39 | 57-0690 | Cotter Pin — Special | 1 |
| 40 | 3230-18 | Carriage Bolt | 4 |
| 41 | 27-0870 | Spindle Assembly | 1 |
| 42 | 66-1340 | Decal — Caution | 1 |
| 44 | 32152-1 | Nut | 4 |
| 45 | 3211-15 | Screw — Hex Hd. | 2 |
| 46 | 67-5360 | Decal, Danger | 1 |

*Not Illustrated

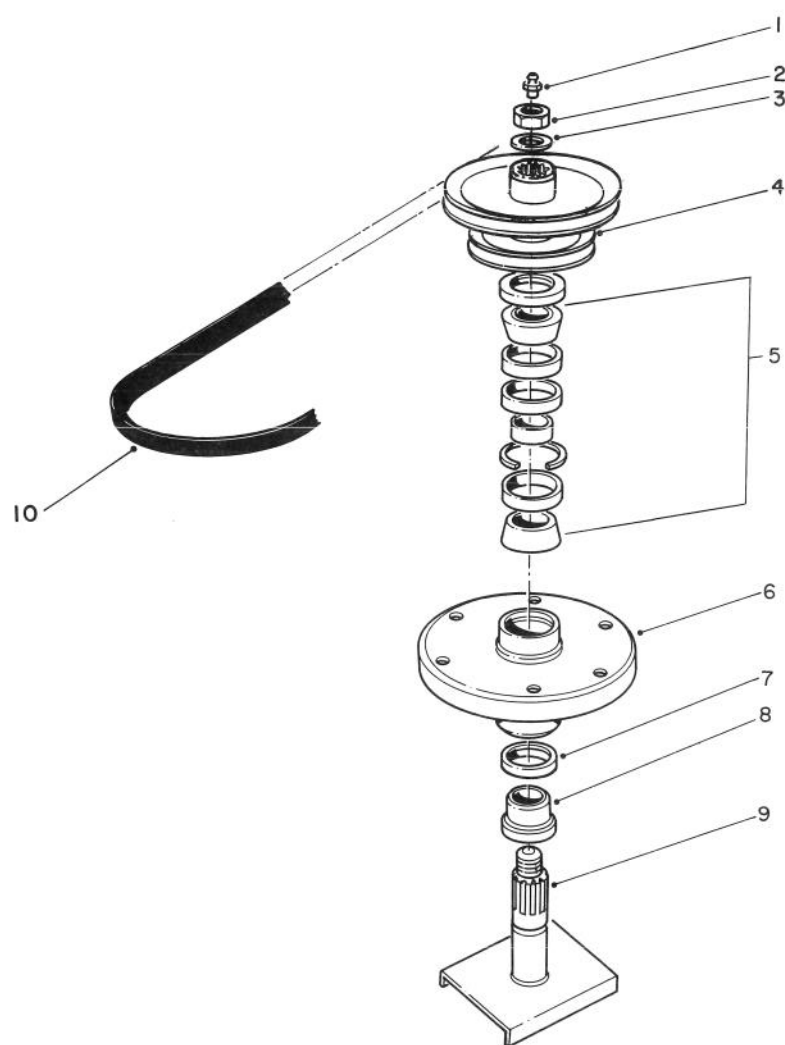


DRIVE SPINDLE NO. 27-0870

T-0111-89

| Ref. No. | Part No. | Description | No. Used |
|----------|----------|----------------|----------|
| 1 | 302-2 | Grease Fitting | 1 |
| 2 | 32146-20 | Nut — Hex Jam | 1 |
| 3 | 7-4150 | Washer | 1 |
| 4 | 27-0970 | Pulley & Hub | 1 |
| 5 | 253-139 | Seal — Wave | 2 |

| Ref. No. | Part No. | Description | No. Used |
|----------|----------|--------------------------|----------|
| 6 | 46-8530 | Bearing Assembly | 1 |
| 7 | 61-4160 | Spindle Housing | 1 |
| 8 | 27-0950 | Spacer — Spindle Bearing | 1 |
| 9 | 27-0920 | Spindle Shaft | 1 |

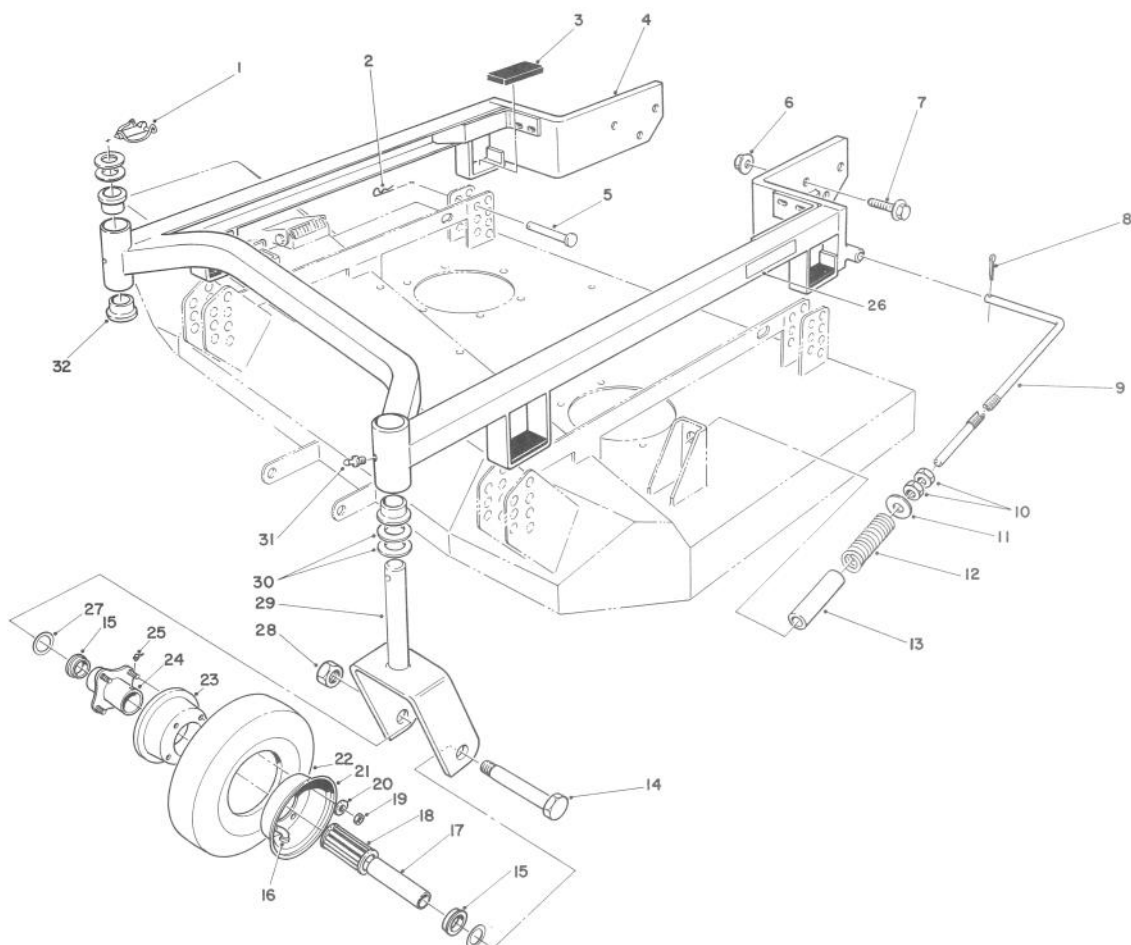


DRIVE SPINDLE NO. 54-7781

T-0218-89

| Ref. No. | Part No. | Description | No. Used |
|----------|----------|------------------|----------|
| 1 | 302-2 | Grease Fitting | 1 |
| 2 | 32146-20 | Nut — Hex Jam | 1 |
| 3 | 7-4150 | Washer | 1 |
| 4 | 55-7610 | Pulley Assembly | 1 |
| 5 | 46-8530 | Bearing Assembly | 1 |

| Ref. No. | Part No. | Description | No. Used |
|----------|----------|--------------------------|----------|
| 6 | 61-4160 | Spindle Housing | 1 |
| 7 | 253-139 | Seal — Wave | 2 |
| 8 | 27-0950 | Spacer — Spindle Bearing | 1 |
| 9 | 51-3551 | Spindle Shaft | 1 |
| 10 | 54-2750 | V-Belt — Engine, to Deck | 1 |



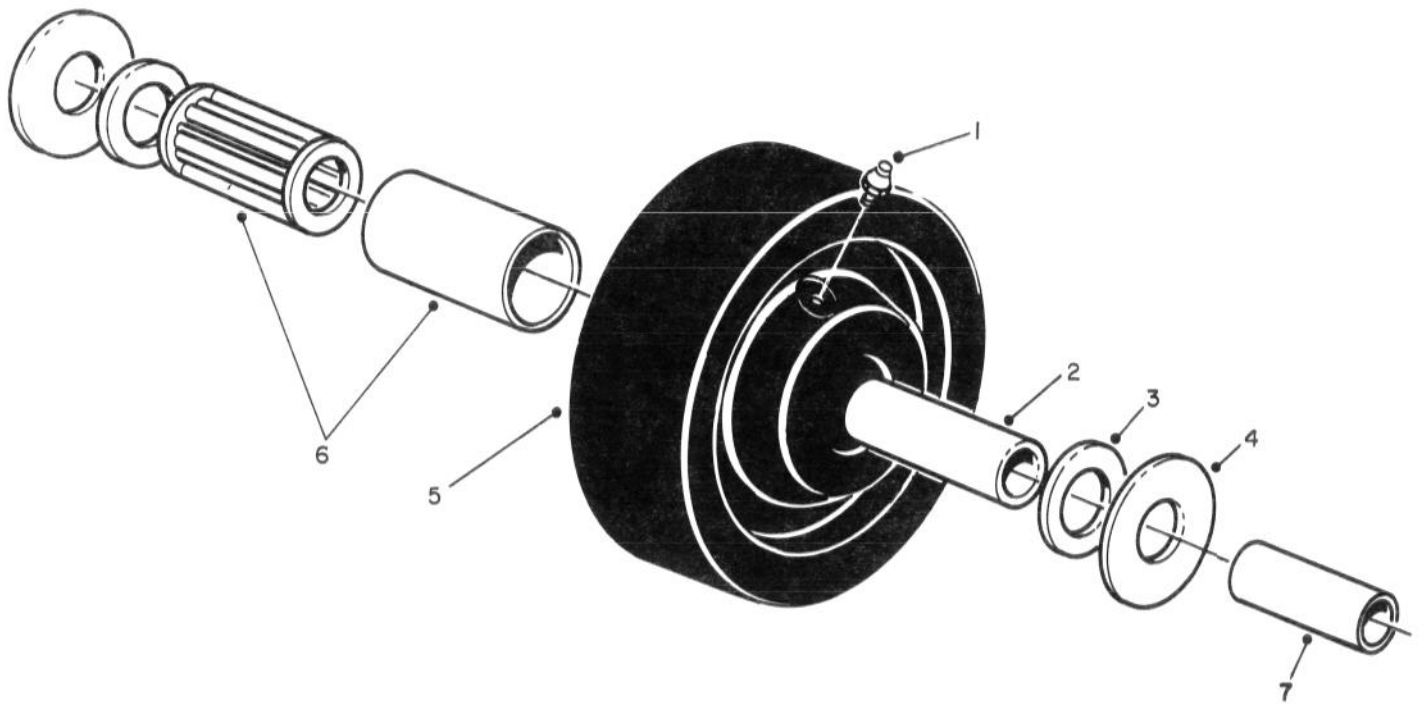
CARRIER FRAME ASSEMBLY

T-0219-89

| Ref. No. | Part No. | Description | No. Used |
|----------|----------|-------------------------------------|----------|
| 1 | 3290-384 | Lynch Pin | 2 |
| 2 | 3290-355 | Pin — Hair | 4 |
| 3 | 51-3720 | Cushion — Rubber | 4 |
| 4 | 51-3740 | Frame — Carrier (Incl. Ref. #32) | 1 |
| 5 | 283-55 | Pin — Clevis | 4 |
| 6 | 32128-23 | Locknut — Flange | 6 |
| 7 | 3234-6 | Screw — Hex Flange | 6 |
| 8 | 3272-7 | Pin — Cotter | 2 |
| 9 | 51-3490 | Shaft — Adjusting | 2 |
| 10 | 3218-5 | Nut — Jam | 4 |
| 11 | 51-3500 | Washer | 2 |
| 12 | 66-7140 | Spring — Compression | 2 |
| 13 | 51-3480 | Sleeve — Tube | 2 |
| 14 | 325-19 | Screw — Cap Hex Head | 2 |
| 15 | 62-5580 | Bushing | 4 |
| 16 | 68-8950 | Tube w/Valve | 2 |
| 17 | 68-8980 | Spanner Bushing | 2 |

| Ref. No. | Part No. | Description | No. Used |
|----------|----------|--|----------|
| 18 | 62-5570 | Roller Bearing | 2 |
| 19 | 3217-6 | Nut — Hex | 8 |
| 20 | 3253-4 | Washer — Lock | 8 |
| 21 | 68-8930 | Wheel Half — Male | 2 |
| 22 | 68-8960 | Tire | 2 |
| 23 | 68-8920 | Wheel Half — Female | 2 |
| 24 | 68-8940 | Hub — Centered | 2 |
| 25 | 302-61 | Grease Fitting | 2 |
| 26 | 68-8360 | Decal — Height of Cut | 1 |
| 27 | 3256-6 | Thrust Washer | 4 |
| 28 | 32153-5 | Locknut | 2 |
| 29 | 68-8900 | Castor Fork — Front | 2 |
| 30 | 3-6781 | Washer — Thrust | 8 |
| 31 | 302-5 | Fitting — Grease | 2 |
| 32 | 28-9290 | Bushing — Special | 4 |
| * | 13-3869 | Castor Wheel Assembly, (2 per carton) | 1 |

*Not Illustrated



CASTOR WHEEL ASSEMBLY NO. 27-1050 (Optional)

T-0220-89

| Ref. No. | Part No. | Description | No. Used |
|----------|----------|------------------|----------|
| 1 | 302-55 | Grease Fitting | 1 |
| 2 | 27-1200 | Spanner Bushing | 1 |
| 3 | 27-1180 | Bearing Retainer | 2 |

| Ref. No. | Part No. | Description | No. Used |
|----------|----------|----------------|----------|
| 4 | 27-1170 | Thrust Washer | 2 |
| 5 | 27-1190 | Wheel | 1 |
| 6 | 27-1210 | Roller Bearing | 1 |
| 7* | 68-8980 | Spanner | 1 |

*Note: Spanner to be used when assembled with Castor Fork #68-8900.

The Toro Promise

A ONE YEAR LIMITED WARRANTY

The Toro Company promises to repair your TORO Product if defective in materials or workmanship. The following time periods from the date of purchase apply:

Commercial Products 1 Year

The costs of parts and labor are included, but the customer pays the transportation costs on walk rotary mowers with cutting unit width of less than 25".

If you feel your TORO product is defective and wish to rely on The Toro Promise, the following procedure is recommended:

1. Contact your Authorized TORO Distributor or Commercial Dealer (the Yellow Pages of your telephone directory is a good reference source).
2. The Toro Distributor or Commercial Dealer will advise on the arrangements that can be made to inspect and repair your product.
3. The TORO Distributor or Commercial Dealer will inspect the product and advise you whether the product is defective and, if so, make all repairs necessary to correct the defect without an extra charge to you.

If for any reason you are dissatisfied with the distributor's analysis of the defect or the service performed, you may contact us.

Write:

TORO Commercial Products Service Department
8111 Lyndale Avenue South
Minneapolis, Minnesota 55420

The above remedy of product defects through repair by an Authorized TORO Distributor or Commercial Dealer is the purchaser's sole remedy for any defect.

THERE IS NO OTHER EXPRESS WARRANTY. ALL IMPLIED WARRANTIES OF MERCHANTABILITY AND FITNESS FOR USE ARE LIMITED TO THE DURATION OF THE EXPRESS WARRANTY.

Some states do not allow limitations on how long an implied warranty lasts, so the above limitation may not apply to you.

This Warranty applies only to parts or components which are defective and does not cover repairs necessary due to normal wear, misuse, accidents, or lack of proper maintenance. Regular, routine maintenance of the unit to keep it in proper condition is the responsibility of the owner.

All warranty repairs reimbursable under the Toro Promise must be performed by an Authorized TORO Commercial Dealer or Distributor using Toro approved replacement parts.

Repairs or attempted repairs by anyone other than an Authorized TORO Distributor or Commercial Dealer are not reimbursable under the Toro Promise. In addition, these unauthorized repair attempts may result in additional malfunctions, the correction of which is not covered by warranty.

THE TORO COMPANY IS NOT LIABLE FOR INDIRECT, INCIDENTAL OR CONSEQUENTIAL DAMAGES IN CONNECTION WITH THE USE OF THE PRODUCT INCLUDING ANY COST OR EXPENSE OF PROVIDING SUBSTITUTE EQUIPMENT OR SERVICE DURING PERIODS OF MALFUNCTION OR NON-USE.

Some states do not allow the exclusion or limitation of incidental or consequential damages, so the above limitation or exclusion may not apply to you.

This warranty gives you specific legal rights, and you may also have other rights which vary from state to state.

COUNTRIES OTHER THAN THE UNITED STATES OR CANADA

Customers who have purchased TORO products exported from the United States or Canada should contact their TORO Distributor (Dealer) to obtain guarantee policies for your country, province or state. If for any

reason you are dissatisfied with your Distributor's service or have difficulty obtaining guarantee information, contact the TORO importer. If all other remedies fail, you may contact us at The Toro Company.

[illegible]