



## **Seeder Box Kit Soil Cultivator Attachment for Compact Utility Loader**

**Model No. 23120**

### **Parts Catalog**

#### **Ordering Replacement Parts**

To order replacement parts, please supply the part number, the quantity, and the description of each part desired.

#### **Understanding Reference Numbers**

Each Identified part in an illustration has a reference number. The reference number for a part also appears in the parts list, along with other information about the part.

This catalog uses two special reference number formats, one to indicate parts in a service assembly and another to indicate the quantity of a given part in an illustration.

#### **Service Assembly Reference Numbers**

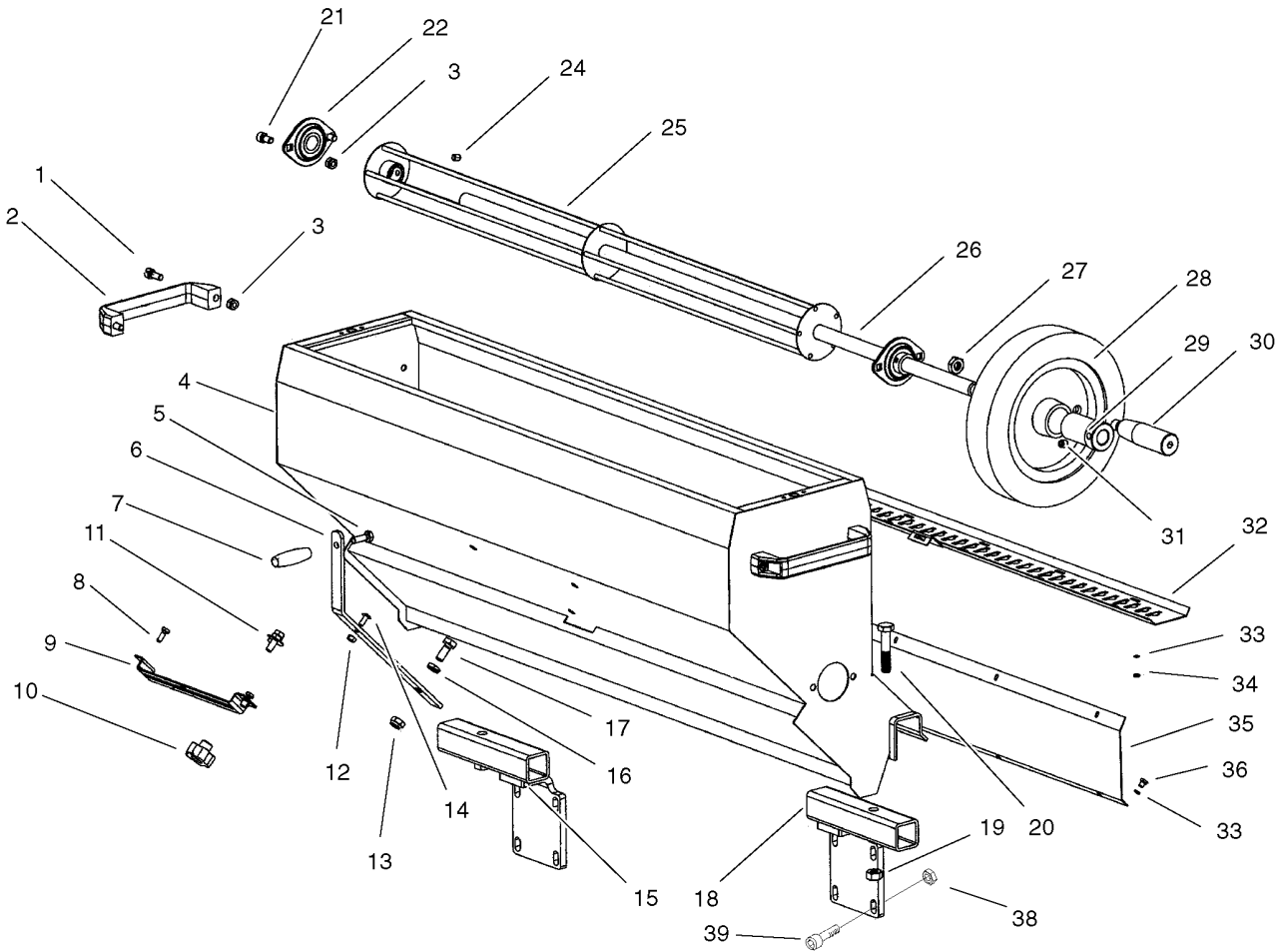
Parts in service assemblies have reference numbers in the form a:b. The a represents the reference number of the entire service assembly and the b represents a sequential number unique to each part within the service assembly.

For example, a wheel assembly might be identified by reference number 6, the tire by 6:1, the valve by 6:2, and the wheel by 6:3. When you order the assembly identified by reference number 6, you receive all parts identified by reference numbers 6:1, 6:2, and 6:3. However, you may also order any part individually. Reference numbers of this type appear in illustrations and in part lists.

#### **Reference Numbers Indicating Quantity**

In an illustration, if a reference number indicates more than one part, the reference number has the form nX y. The n represents the quantity of the part, the X is the multiplication symbol, and the y represents the reference number.

For example, in an illustration, the reference number 2X 37 means that two of the parts identified by reference number 37 are indicated.



## Seeder Box Assembly

Ref	Part No.	Qty.	Description
1	104-5953	4	Screw
2	104-5954	2	Handle
3	104-5955	8	Nut
4	104-5956	1	Hopper
5	57-6380	1	Screw-HH
6	104-5957	1	Bar-Closing
7	104-5958	1	Handle-Closing
8	104-5959	2	Screw
9	104-5960	1	Guide-Rate, Seed
10	104-5961	1	Handle-Rate, Seed
11	104-5962	1	Stop-Rate, Seed
12	104-5963	1	Nut
13	33025-00	1	Nut-Lock
14	104-5964	1	Screw
15	104-5965	1	RH Mounting ASM
16	104-5966	1	Nut
17	48-7780	1	Screw
18	104-5967	1	LH Mounting ASM
19	33026-00	2	Nut-Lock
20	33116-060	2	Screw-HH
21	104-5968	4	Screw
22	104-5969	2	Bearing ASM
24	104-5970	2	Screw-Set
25	104-5971	1	Mixer ASM

Ref	Part No.	Qty.	Description
26	104-5972	1	Axis-Mixer
27	104-5973	1	Nut
28	104-5974	1	Wheel-Drive
29	104-5975	1	Hub-Wheel
30	104-5976	1	Crank
31	104-5977	1	Screw-Set
32	104-5978	1	Plate-Rack, Rate
33	104-5979	22	Washer
34	104-5980	12	Nut
35	104-5981	1	Plate-Cover
36	104-5982	10	Screw
38	33025-00	8	Nut-Lock
39	104-5983	8	Screw