



Rear Roller Brush Kit

Reelmaster® 5500-D, 6500-D and 6700-D

Model No. 03876

Parts Catalog

Ordering Replacement Parts

To order replacement parts, please supply the part number, the quantity, and the description of each part desired.

Understanding Reference Numbers

Each Identified part in an illustration has a reference number. The reference number for a part also appears in the parts list, along with other information about the part.

This catalog uses two special reference number formats, one to indicate parts in a service assembly and another to indicate the quantity of a given part in an illustration.

Service Assembly Reference Numbers

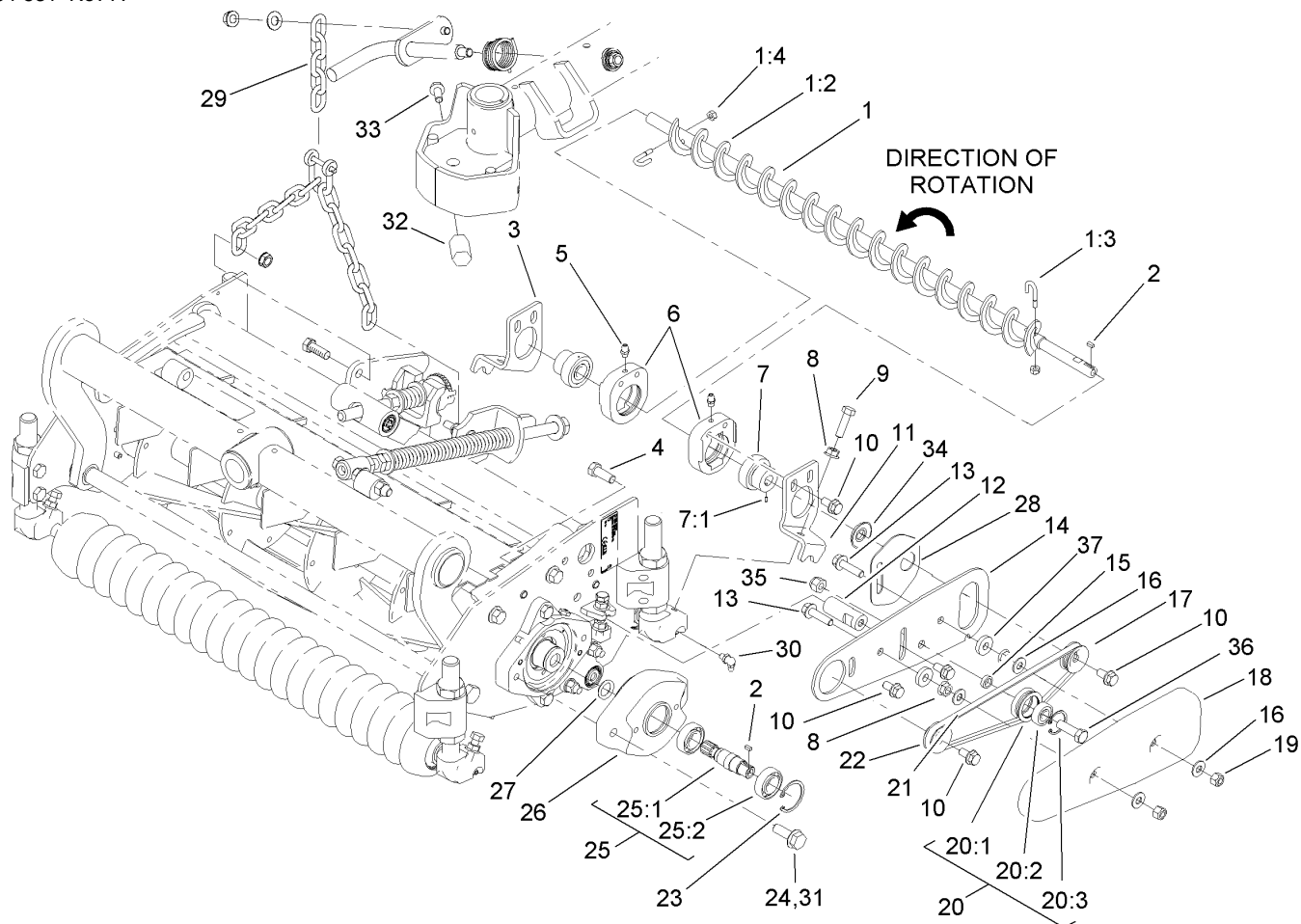
Parts in service assemblies have reference numbers in the form a:b. The a represents the reference number of the entire service assembly and the b represents a sequential number unique to each part within the service assembly.

For example, a wheel assembly might be identified by reference number 6, the tire by 6:1, the valve by 6:2, and the wheel by 6:3. When you order the assembly identified by reference number 6, you receive all parts identified by reference numbers 6:1, 6:2, and 6:3. However, you may also order any part individually. Reference numbers of this type appear in illustrations and in part lists.

Reference Numbers Indicating Quantity

In an illustration, if a reference number indicates more than one part, the reference number has the form nX y. The n represents the quantity of the part, the X is the multiplication symbol, and the y represents the reference number.

For example, in an illustration, the reference number 2X 37 means that two of the parts identified by reference number 37 are indicated.



Rear Roller Brush Assembly

Ref	Part No.	Qty.	Description
1	99-8482	1	Roller Brush Shaft ASM
1:2	105-6792	1	Brush-Roller
1:3	104-1830	2	Bolt-J
1:4	3296-2	2	Nut-Lock
2	95-9619	2	Key-Square
3	104-1823	1	Bracket-Brush, RH
4	323-6	1	Screw-HH
5	302-5	2	Fitting-Grease
6	104-8202	2	Housing-Bearing, Roller Brush
7	104-1842	2	Roller Bearing ASM
7:1	3245-1	1	Screw-Set, HSH
8	32128-20	4	Nut-HF
9	322-16	2	Screw-HH
10	3234-14	8	Screw-HHF
11	104-1824	1	Bracket-Brush, LH
12	104-1837	1	Spacer-Threaded
13	3234-36	2	Screw-HHF
14	106-7500	1	Plate-Brush
15	106-7505	1	Spacer
16	87-8640	4	Washer-Flat
17	106-9615	1	Pulley-Driven
18	104-1819	1	Cover-Belt
19	3296-29	2	Nut-Lock, NI
20	110-4122	1	Idler Bearing ASM

Ref	Part No.	Qty.	Description
20:1		1	Pulley-Idler (Not Serviced Separately)
20:2	106-4237	1	Bearing
20:3	32151-60	1	Ring-Snap
21	108-6713	1	Belt-Drive
22	106-7504	1	Pulley-Drive
23	32151-34	1	Ring-Retaining
24	33105-030	2	Screw-HHF
25	104-1833	1	Drive Shaft ASM
25:1		1	Shaft-Drive (Not Serviced Separately)
25:2	98-5215	2	Bearing-Ball, Radial
26	108-0647	1	Housing-Groomer
27	253-83	1	Seal-Oil
28	104-8201	1	Plate-Guard
29	84-2451	1	Chain-Straight, 5 Link
30	104-1843	1	Fitting-Grease, 90 DEG
31	3234-24	2	Screw-HHF
32	106-7539	1	Spacer-Hex
33	98-9940	1	Screw
34	106-7506	1	Seal-Guard
35	3296-39	1	Nut-Lock, NI
36	323-7	1	Screw-HH
37	104-7658	2	Spacer