



Z587L Z Master[®] With 72in TURBO FORCE[®] Side Discharge Mower

Model No. 74252 - 260000001 and up.

Parts Catalog

Ordering Replacement Parts

To order replacement parts, please supply the part number, the quantity, and the description of each part desired.

Understanding Reference Numbers

Each Identified part in an illustration has a reference number. The reference number for a part also appears in the parts list, along with other information about the part.

This catalog uses two special reference number formats, one to indicate parts in a service assembly and another to indicate the quantity of a given part in an illustration.

Service Assembly Reference Numbers

Parts in service assemblies have reference numbers in the form a:b. The a represents the reference number of the entire service assembly and the b represents a sequential number unique to each part within the service assembly.

For example, a wheel assembly might be identified by reference number 6, the tire by 6:1, the valve by 6:2, and the wheel by 6:3. When you order the assembly identified by reference number 6, you receive all parts identified by reference numbers 6:1, 6:2, and 6:3. However, you may also order any part individually. Reference numbers of this type appear in illustrations and in part lists.

Reference Numbers Indicating Quantity

In an illustration, if a reference number indicates more than one part, the reference number has the form nX y. The n represents the quantity of the part, the X is the multiplication symbol, and the y represents the reference number.

For example, in an illustration, the reference number 2X 37 means that two of the parts identified by reference number 37 are indicated.

Contents

Description	Page	Description	Page
Front Frame Assembly 3	Fuel Tank Assembly 28
Castor and Wheel Assembly 5	Electrical Components Assembly 29
Main Frame Assembly 6	Cylinder and Crankcase Assembly Kawasaki FD750D-BS03 30
Brake and Wheel Hub Assembly 7	Valve and Camshaft Assembly Kawasaki FD750D-BS03 32
Steering Control Assembly 8	Lubrication Equipment Assembly Kawasaki FD750D-BS03 34
Hydraulic System Assembly 9	Cooling Equipment Assembly Kawasaki FD750D-BS03 36
Seat and Roll-Over-Protection-System Assembly 11	Electric Equipment Assembly Kawasaki FD750D-BS03 38
Deluxe Seat Assembly No. 110-0838 12	Control Equipment Assembly Kawasaki FD750D-BS03 40
Roll-Over-Protection-System Assembly No. 108-1097 13	Carburetor Assembly Kawasaki FD750D-BS03 42
Deck Connection Assembly 14	Piston and Crankshaft Assembly Kawasaki FD750D-BS03 44
Deck Assembly 15	Air Filter and Muffler Assembly Kawasaki FD750D-BS03 45
Spindle Assembly No. 106-3217 17	Starter Assembly Kawasaki FD750D-BS03 46
Deck and Decal Assembly No. 107-1625 18	Fuel Pump and Filter Assembly Kawasaki FD750D-BS03 48
Rubber Deflector Assembly No. 108-2792 19	Attachments and Accessories List 49
Lever Assembly No. 107-1664 20		
Drive Idler Assembly 21		
Z-Stand Assembly 22		
Engine and Clutch Assembly 23		
Air Cleaner Assembly No. 95-5805 24		
Cooling System Assembly 25		
Hood Assembly 26		
Cooling Mounting Frame Assembly 27		

Part Description Abbreviations

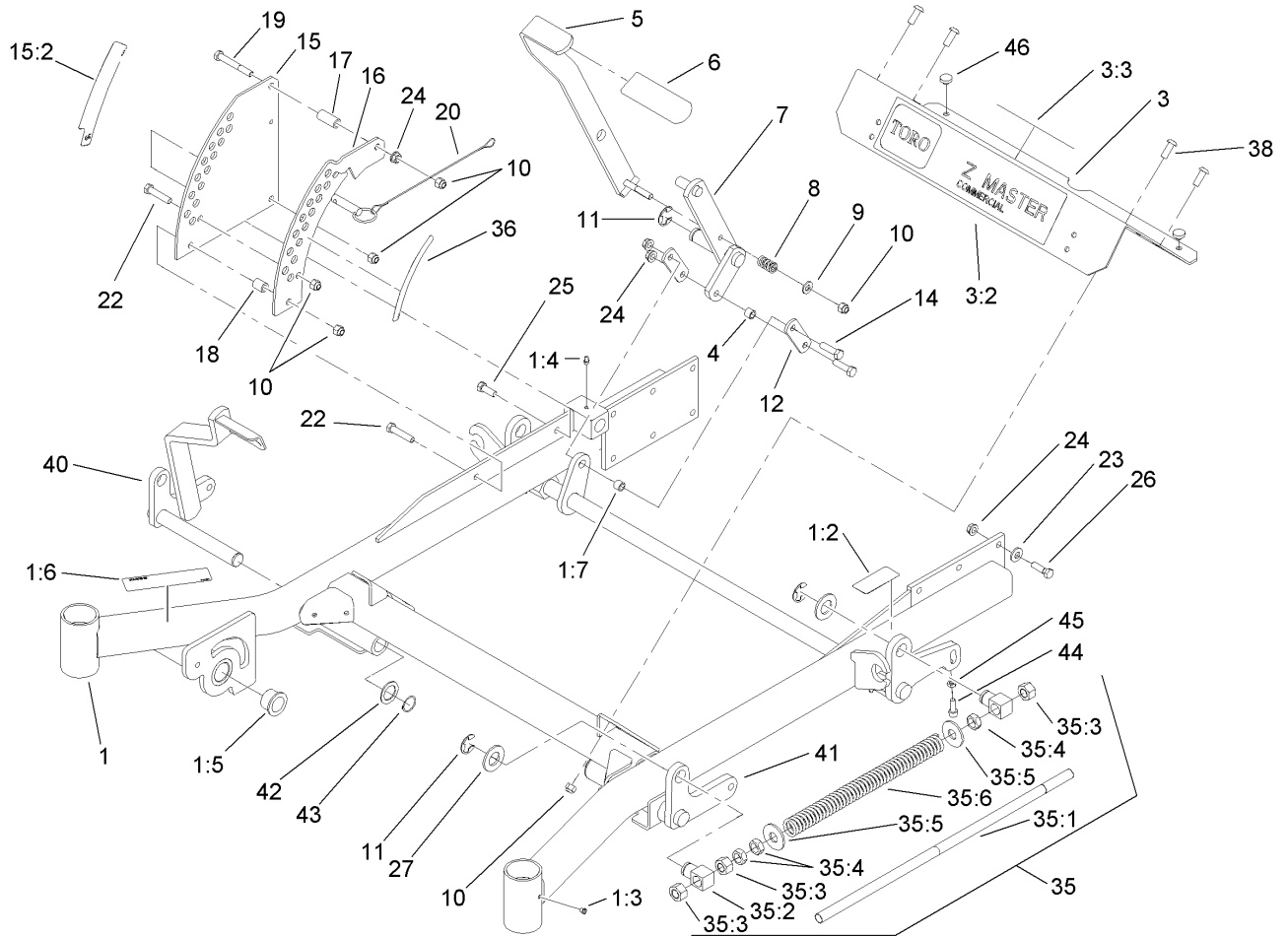
Part descriptions in this catalog may include the following abbreviations.

AR. as required	INC. incorporated
ASM. assembly	LH. left hand
BBC. blade brake clutch	NI. nylon insert
CARR. carriage	NPTF. national pipe thread fine
DEG. degrees	PFH. phillips flat head
EXT. external	PPH. phillips pan head
FH. flat head	PPHTF. phillips pan head thread forming
GA. gauge	PRH. phillips round head
HF. hex flange	PTH. phillips truss head
HH. hex head	PTO. power-take-off
HHF. hex head flange	RH. right hand
HHFTF. hex head flange thread forming	ROPS. roll-over-protection-system
HJ. hex jam	SFH. slotted fillister head
HLH. hex lag head	SHH. slotted hex head
HOC. height-of-cut	SHWH. slotted hex washer head
HSBH. hex socket button head	SPH. slotted pan head
HSFH. hex socket flat head	SQH. square head
HSH. hex socket head	SRH. slotted round head
HWH. hex washer head	STD. standard
HWHTF. hex washer head thread forming	TAP. self tapping
HYD. hydraulic	TTH. torx truss head

Footnotes

- ❶ Not illustrated
- ❷ Optional Equipment

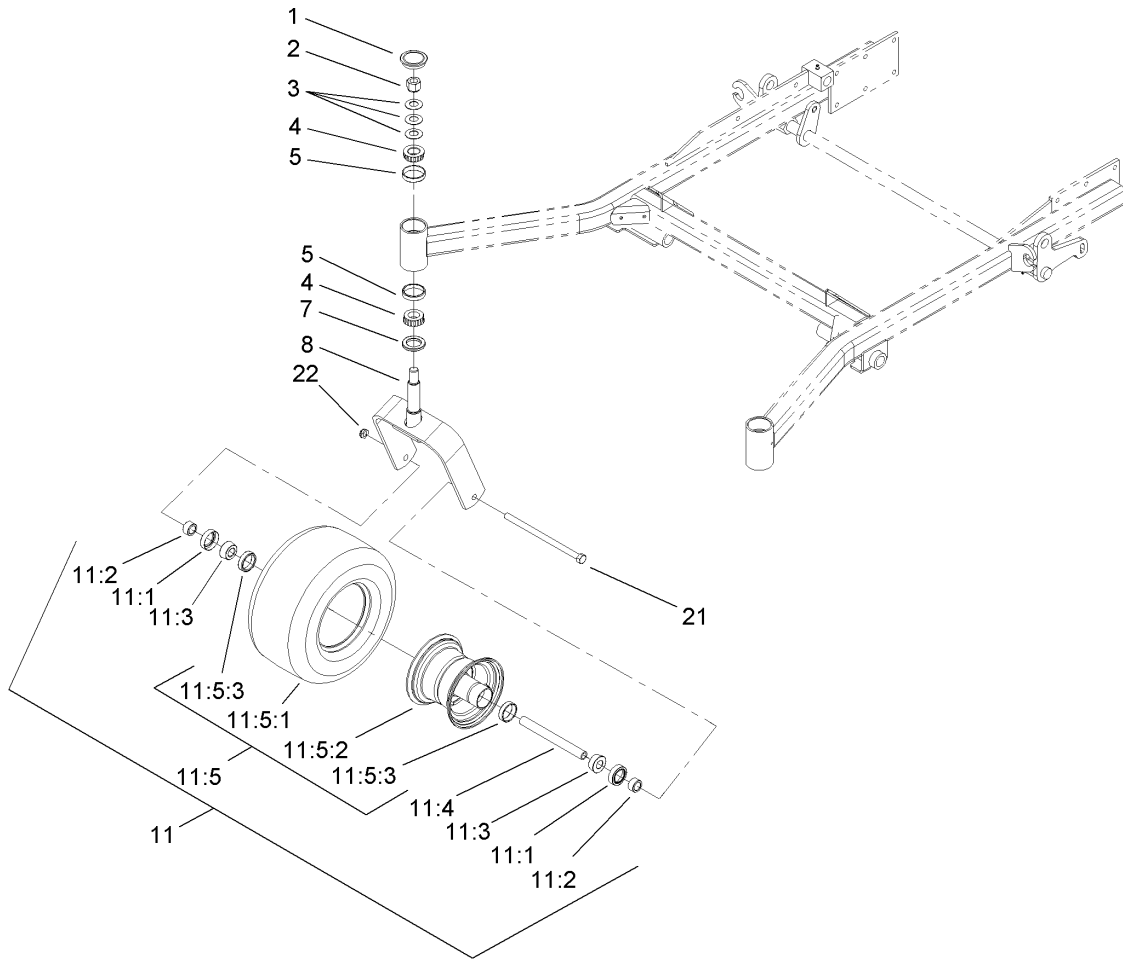
- ❸ Not serviced separately
- ❹ Obtain from your local Kawasaki dealer



Front Frame Assembly

Ref	Part No.	Qty.	Description
1	106-8999	1	Frame ASM
1:2	107-1857	1	Decal-Brake, Parking
1:3	1-811010	2	Plug
1:4	302-19	5	Fitting-Grease
1:5	94-1291	2	Bushing
1:6	104-7759	1	Decal-Warning
1:7	103-1918	1	Bushing
3	106-9981	1	Front Floorpan ASM
3:2	106-7451	1	Decal
3:3	107-2112	1	Decal-Warning
4	103-1918	1	Bushing
5	103-2083-03	1	Lift Lever ASM
6	1-633295	1	Grip-Lever, Lift
7	103-2064-03	1	Arm-Lift, Deck
8	1-633325	1	Spring-Compression
9	3256-24	1	Washer-Flat
10	3296-39	9	Nut-Lock, NI
11	32151-103	5	Ring-Snap
12	1-633068	2	Arm-Lift, Deck
14	323-29	2	Screw-HH
15	110-0833	1	Outer Deck Lift Plate ASM
15:2	107-1860	1	Decal-Height, Deck
16	108-7759-01	1	Plate-Lift, Deck
17	1-633082	1	Bushing-Lever, Lift

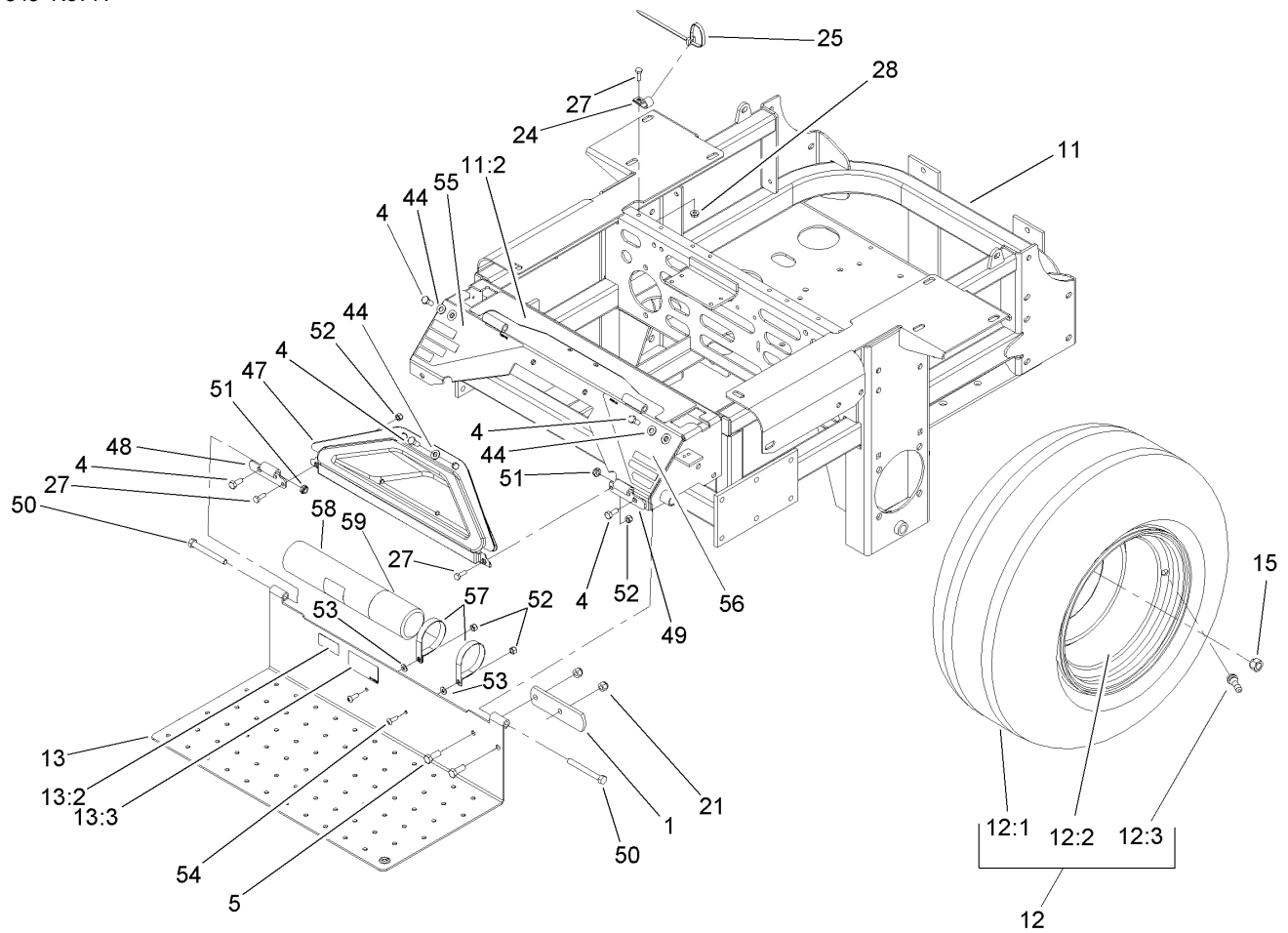
Ref	Part No.	Qty.	Description
18	1-633080	1	Bushing-Lever, Lift
19	323-13	1	Screw-HH
20	106-9951	1	Hitch Pin ASM
22	323-9	2	Screw-HH
23	98-5975	12	Washer-Belleville
24	3290-357	15	Nut-HHF, Whiz
25	323-6	1	Screw-HH
26	323-7	12	Screw-HH
27	3256-29	4	Washer-Flat
35		2	Front Frame Spring ASM
35:1	1-633096	1	Rod-Lift, Deck
35:2	1-633441	2	Swivel-Deck Mount, Rear
35:3	3217-11	3	Nut-Hex
35:4	3218-6	3	Nut-Jam
35:5	3256-7	2	Washer-Flat
35:6	1-643015	1	Spring-Support, Deck
36	107-1861	1	Decal-Height, Deck
38	3274-94	4	Screw-HSBH
40	108-7786-01	1	RH Front Deck Lift ASM
41	106-8984-01	1	LH Deck Lift ASM
42	1-523157	2	Washer-Spacer, 14 GA
43	32151-29	2	Ring-Retaining
44	3274-18	2	Screw-HSH
45	3218-2	2	Nut-Jam



Castor and Wheel Assembly

Ref	Part No.	Qty.	Description
1	103-4882	2	Cap-Grease
2	3296-51	2	Nut-Lock, NI
3	1-633508	6	Washer-Bellville
4	254-94	4	Bearing-Cone, Tapered
5	254-72	4	Bearing-Cup, Tapered
7	1-543511	2	Seal-Grease
8	103-1474-01	2	Fork-Caster
11	1-644251	2	Caster Wheel ASM
11:1	1-633580	2	Seal-Bearing
11:2	1-633581	2	Spacer-Bearing
11:3	1-633585	2	Bearing-Cone, Taper
11:4	1-633959	1	Spacer-Caster, Front
11:5		1	Wheel And Tire ASM
11:5:1	1-523009	1	Tire
11:5:2	1-633987	1	Wheel
11:5:3	1-633584	2	Bearing-Cup
21	325-39	2	Screw-HH
22	3296-23	2	Nut-Lock, NI

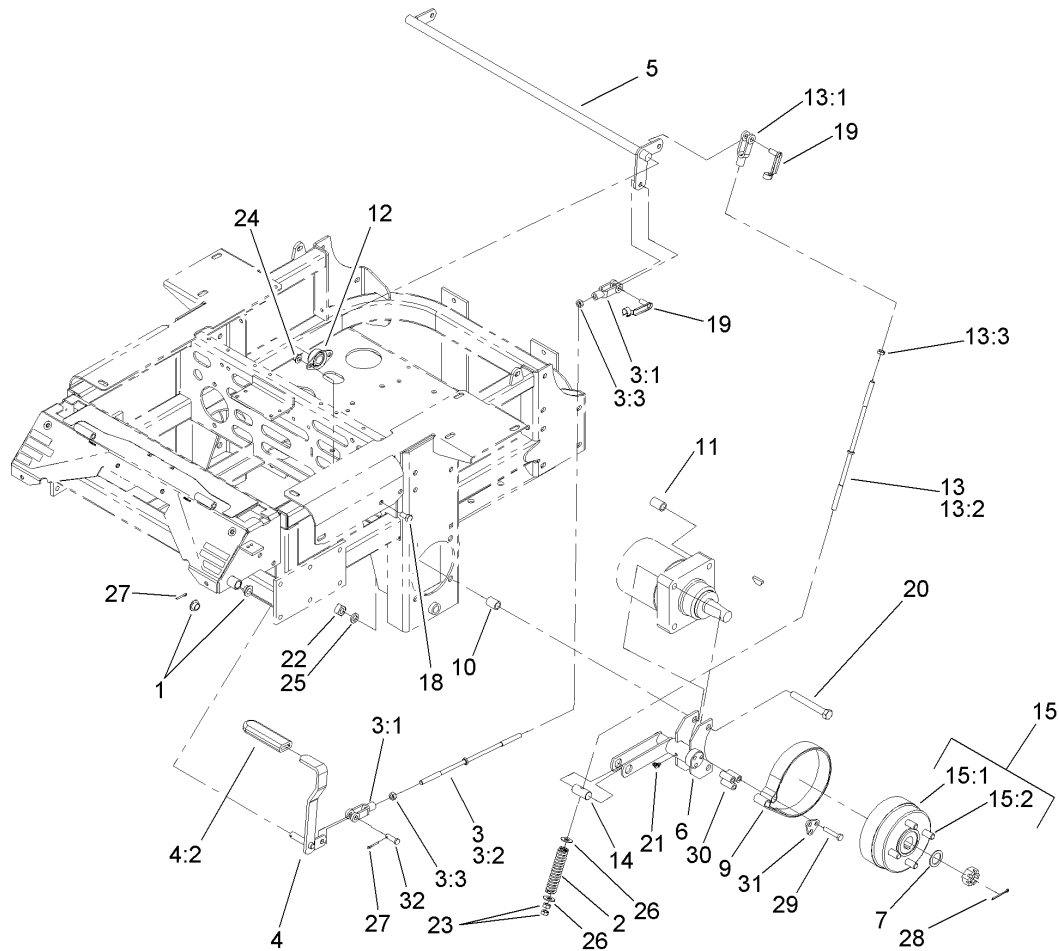
Ref	Part No.	Qty.	Description



Main Frame Assembly

Ref	Part No.	Qty.	Description
1	1-633964-03	1	Stop-Brake, Park
4	322-43	6	Screw-HH
5	323-6	2	Screw-HH
11	108-1095	1	Main Frame ASM
11:2	107-8076	1	Decal-Console, Top
12	1-633970	2	Wheel And Tire ASM
12:1	1-633993	1	Tire
12:2	1-633992	1	Wheel
12:3	232-27	1	Stem-Valve
13	107-1858	1	Floorpan
13:2	98-4387	1	Decal-Protection, Ear
13:3	107-1864	1	Decal-Location, Manual
15	242-50	8	Nut-Lug
21	3296-39	2	Nut-Lock, NI
24	1-513762	1	Clip-Loom
25	1-303335	1	Tie-Plastic
27	321-4	3	Screw-HH
28	32128-33	1	Nut-HF
44	3256-70	6	Washer-Flat
47	106-7498	1	Pocket
48	106-7488-03	1	Hinge-Floorpan, LH
49	106-7489-03	1	Hinge-Floorpan, RH
50	323-20	2	Screw-HH
51	3296-59	2	Nut-Lock, NI

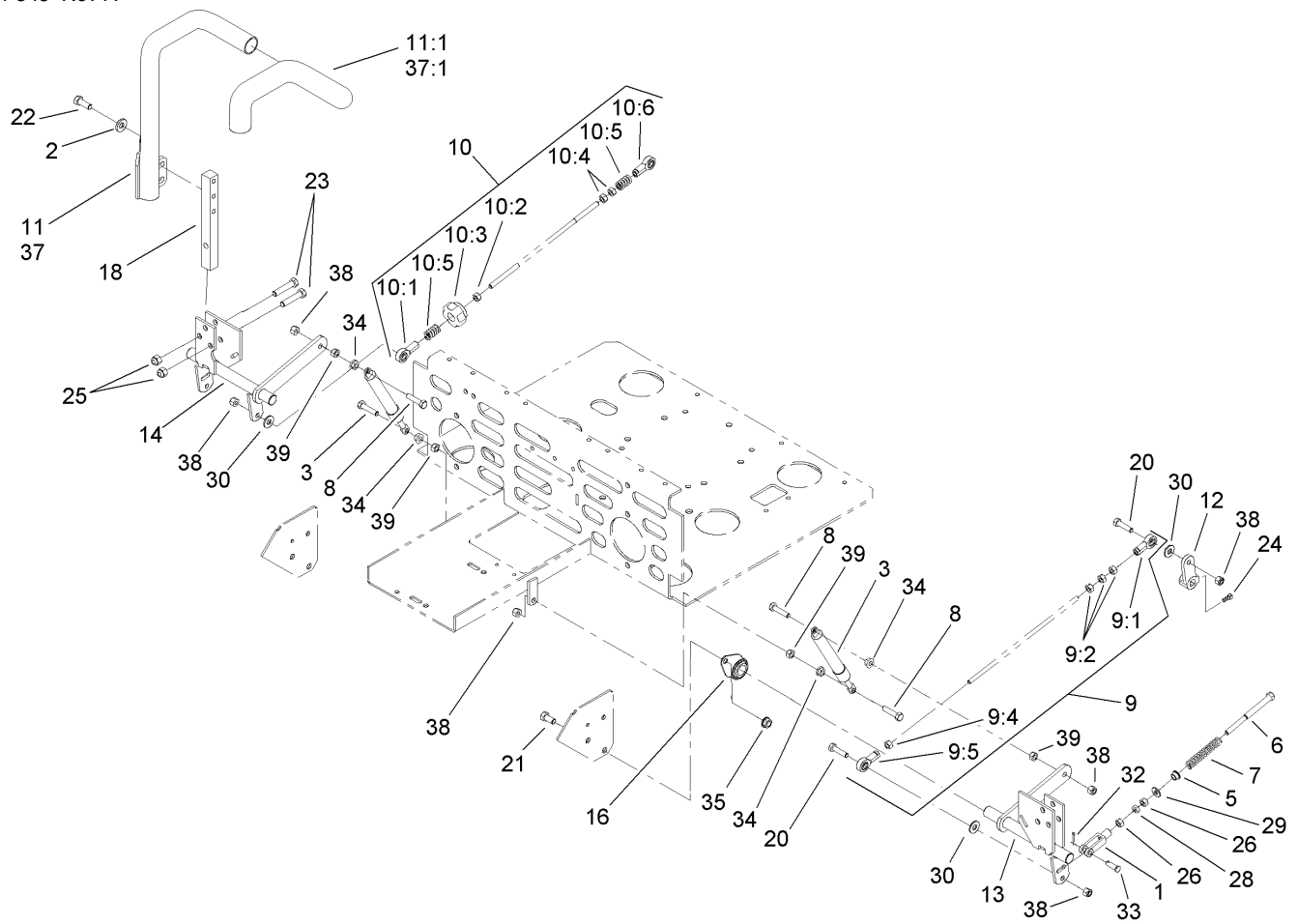
Ref	Part No.	Qty.	Description
52	3296-42	4	Nut-Lock, NI
53	3256-63	2	Washer-Flat
54	3258-166	2	Screw-PRH
55	106-9989	1	Decal-Warning
56	106-7492	1	Decal-Danger
57	107-1865	2	R-Clamp
58	104-7050	1	Housing-Manual
59	104-7048	1	Cap-Housing



Brake and Wheel Hub Assembly

Ref	Part No.	Qty.	Description
1	1-513140	2	Bearing-Control
2	1-633454	2	Spring-Brake
3	103-4332	1	Brake Rod And Yoke ASM
3:1	1-633131	2	Yoke-Linkage, Brake
3:2	1-633477	1	Rod-Brake
3:3	3219-3	2	Nut-Hex
4	1-634500	1	Brake Lever ASM
4:2	1-633268	1	Grip-Lever, Brake
5	1-632217-03	1	Shaft-Brake
6	103-0354-03	2	Bracket-Brake ASM
7	1-523157	2	Washer-Spacer, 14 GA
9	103-0355	2	Band-Brake
10	1-633060	4	Spacer-Wheel, Short
11	1-633062	4	Spacer-Wheel, Long
12	1-633102	2	Bearing-Flange, Side
13	103-4333	2	Brake Rod And Yoke ASM
13:1	1-633131	1	Yoke-Linkage, Brake
13:2	1-633477	1	Rod-Brake
13:3	3219-3	1	Nut-Hex
14	1-633144	2	Pin-Trunion
15	103-0590	2	Hub And Wheel ASM
15:1	103-0589	1	Wheel Hub ASM
15:2	1-633926	4	Stud-Wheel
18	323-4	4	Screw-HH

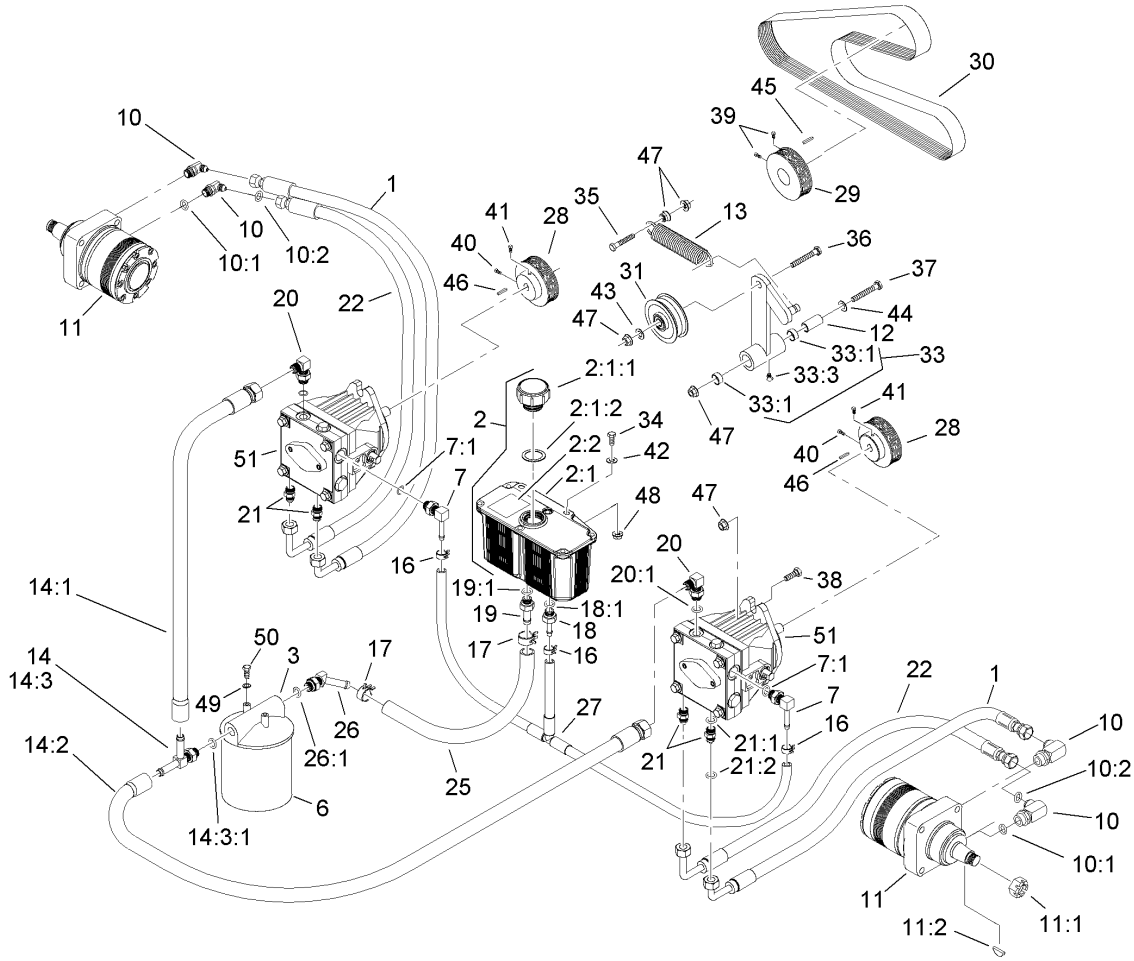
Ref	Part No.	Qty.	Description
19	103-2399	3	Pin-Spring, Clevis
20	325-20	8	Screw-HH
21	302-19	2	Fitting-Grease
22	103-0131	8	Nut-Square
23	3219-3	4	Nut-Hex
24	3290-357	4	Nut-HHF, Whiz
25	3253-7	8	Washer-Lock
26	3256-4	4	Washer-Flat
27	3272-10	2	Pin-Cotter
28	1-806800	2	Pin-Cotter
29	322-9	6	Screw-HH
30	103-0384	6	Spacer
31	103-0374	2	Retainer-Band, Brake
32	1-808285	1	Pin-Clevis



Steering Control Assembly

Ref	Part No.	Qty.	Description
1	1-303105	2	Yoke-Adjustable
2	98-5975	4	Washer-Belleville
3	103-4079	2	Damper-Control, Motion
5	1-603735	2	Bushing-Flanged
6	1-603737	2	Bolt-Return, Neutral
7	1-603807	2	Spring-Return, Neutral
8	1-403180	4	Screw-HH
9	103-4331	1	Tracking Rod ASM
9:1	1-543017	1	Balljoint-RH
9:2	3219-2	3	Nut-Hex
9:4	1-804524	1	Nut
9:5	1-633152	1	Balljoint-Thread, LH
10	103-4330	1	Tracking Rod ASM
10:1	1-543017	1	Balljoint-RH
10:2	3219-2	1	Nut-Hex
10:3	103-3060	1	Knob-Tracking
10:4	1-804524	2	Nut
10:5	1-323245	2	Spring-Compression
10:6	1-633152	1	Balljoint-Thread, LH
11	108-7238	1	LH Lever ASM
11:1	106-9987	1	Grip-Control, Motion
12	1-632208	2	Arm-Control, Pump
13	103-4781	1	Control-Motion, LH
14	103-4782	1	Control-Motion, RH

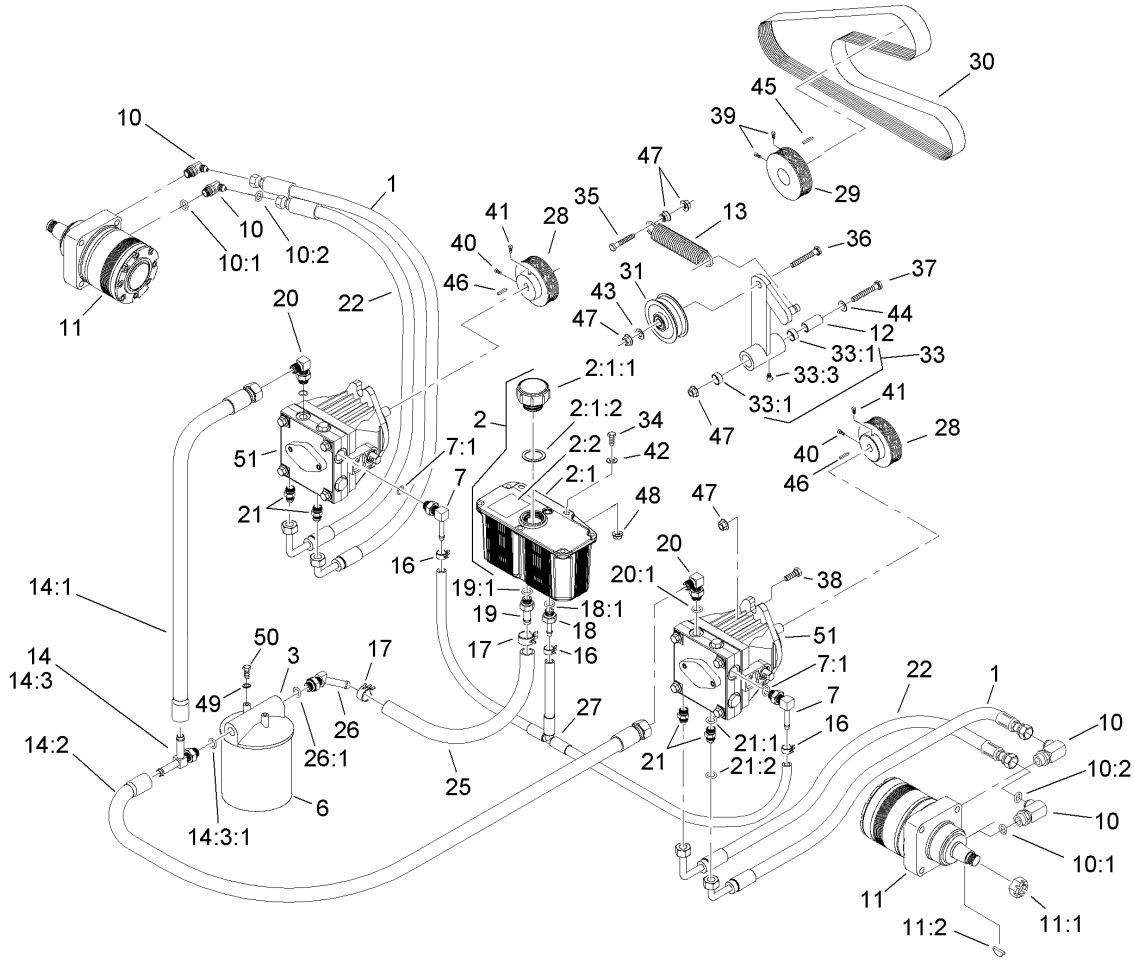
Ref	Part No.	Qty.	Description
16	1-633102	4	Bearing-Flange, Side
18	103-0407	2	Arm-Shaft, Control
20	322-6	4	Screw-HH
21	323-4	8	Screw-HH
22	323-6	4	Screw-HH
23	323-9	6	Screw-HH
24	1-803022	2	Screw-Set
25	3296-39	6	Nut-Lock, NI
26	3219-2	4	Nut-Hex
28	3220-2	2	Nut-Jam
29	3256-2	2	Washer-Flat
30	3256-3	4	Washer-Flat
32	3272-5	2	Pin-Cotter
33	1-808280	2	Pin-Clevis
34	32128-20	4	Nut-HF
35	3290-357	8	Nut-HHF, Whiz
37	108-7237	1	RH Lever ASM
37:1	106-9987	1	Grip-Control, Motion
38	3296-29	8	Nut-Lock, NI
39	3217-6	4	Nut-Hex



Hydraulic System Assembly

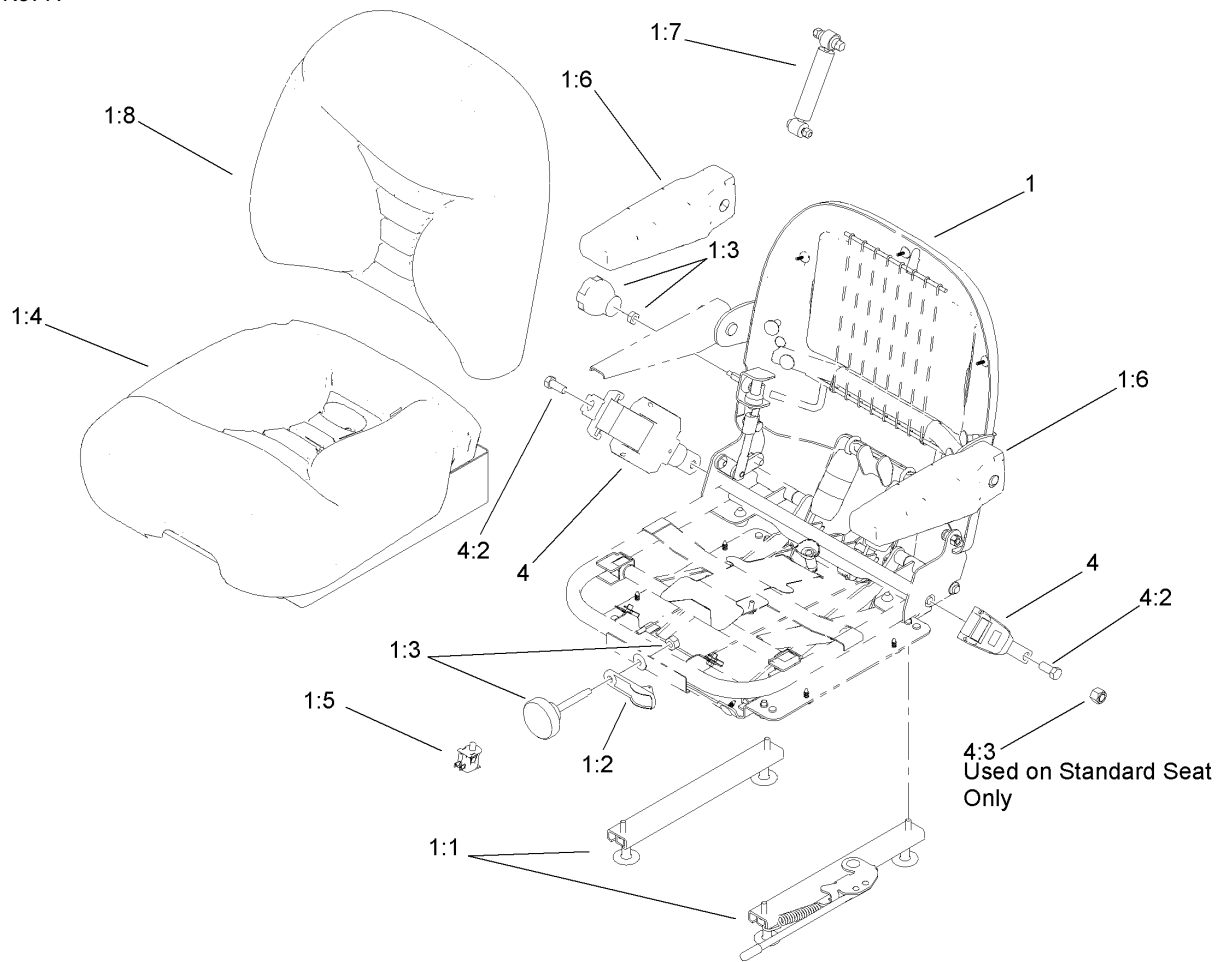
Ref	Part No.	Qty.	Description
1	103-3734	2	HYD Hose ASM
2	103-1947	1	HYD Reservoir ASM
2:1		1	Reservoir-HYD
2:1:1	103-1948	1	Cap-Reservoir, HYD
2:1:2	103-1949	1	Gasket-Cap
2:2	1-523552	1	Decal-Tank, HYD
3	104-7836	1	Head-Filter
6	1-633750	1	Filter-HYD
6	1-633752	1	Filter-HYD, Winter
7	103-1799	2	Elbow-90 DEG
7:1	237-42	1	O-Ring
10	1-633786	4	Fitting-90 DEG
10:1	237-80	1	O-Ring
10:2	1-603992	1	O-Ring
11	103-6988	2	Motor-Wheel
11:1	1-809036	1	Nut-HH
11:2	3257-42	1	Key-Woodruff
11:99	1-000099	1	Seal Kit
11:99	1-000139	1	Bearing Kit
11:99	103-2748	1	Drive Link Kit
12	1-603384	1	Bushing-Pivot, Idler
13	103-3330	1	Spring-Extension
14	109-1936	1	Pump Inlet Hose ASM
14:1	103-1826	1	HYD Hose ASM

Ref	Part No.	Qty.	Description
14:2	103-1827	1	HYD Hose ASM
14:3	103-1828	1	Adapter-Run, Tee
14:3:1	237-42	1	O-Ring
16	103-1716	3	Clamp-Hose
17	103-1988	2	Clamp-Hose
18	103-1801	1	Adapter-Straight
18:1	237-42	1	O-Ring
19	103-1912	1	Adapter-Straight
19:1	237-42	1	O-Ring
20	103-1802	2	Fitting-HYD, 90 DEG
20:1	1-603921	1	O-Ring
21	1-603990	4	Fitting-Straight
21:1	1-603920	1	O-Ring
21:2	1-603992	1	O-Ring
22	103-1863	2	Hose-Lower
25	103-1808	1	Hose-HYD
26	103-1807	1	Elbow-45 DEG
26:1	237-42	1	O-Ring
27	103-1806	1	HYD Hose ASM
28	103-6907	2	Sheave
29	1-633567	1	Sheave
30	103-7445	1	Belt-V
31	1-633167	1	Sheave-Idler
33	1-634277	1	Bearing Arm ASM



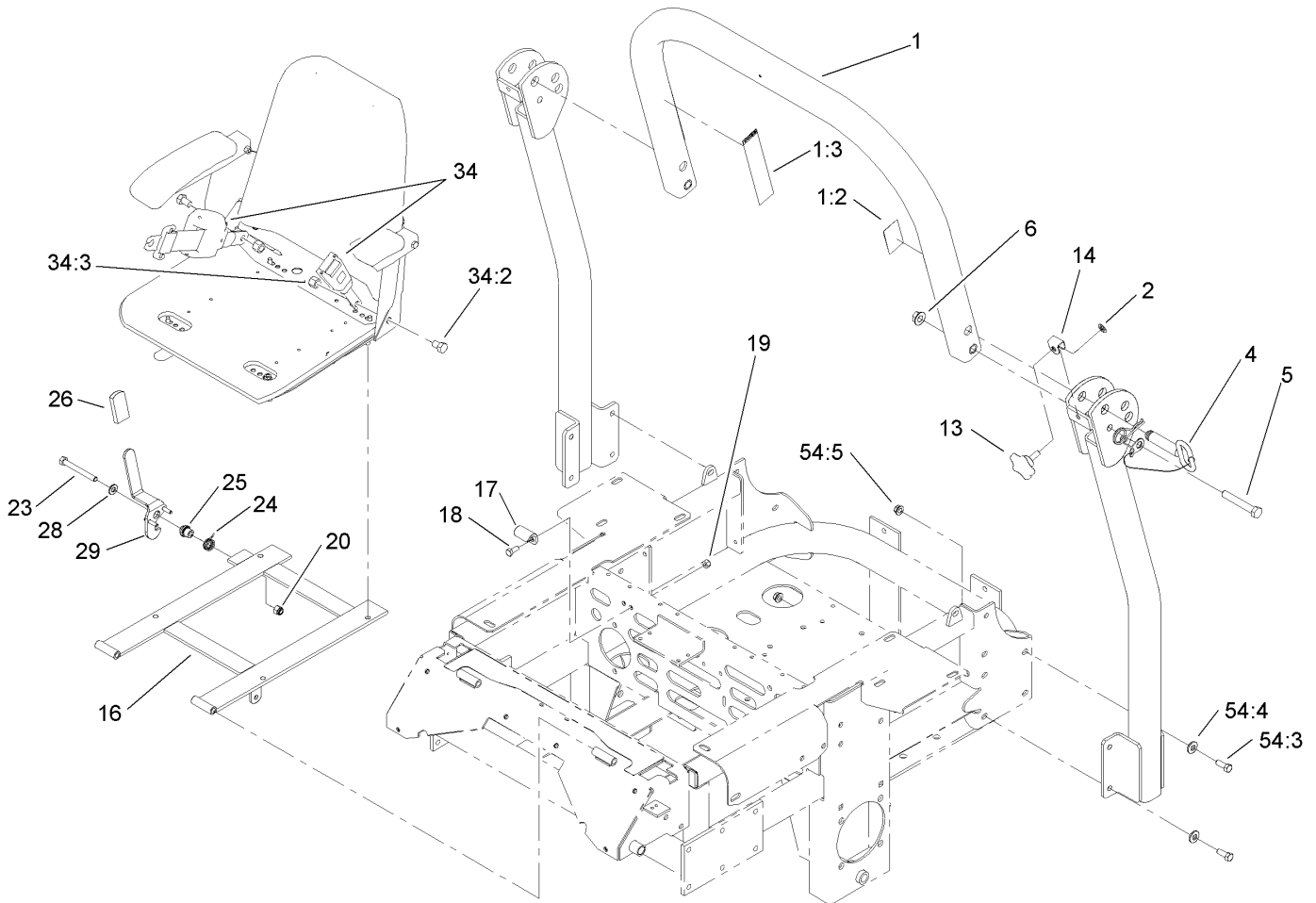
Hydraulic System Assembly (continued)

Ref	Part No.	Qty.	Description
33:1	1-513034	2	Sleeve-Bearing
33:3	302-40	1	Fitting-Grease
34	321-6	2	Screw-HH
35	323-8	1	Screw-HH
36	323-9	1	Screw-HH
37	1-800805	1	Screw-HH
38	323-7	4	Screw-HH
39	1-803022	2	Screw-Set
40	30-1710	2	Screw
41	1-803050	2	Screw-Set
42	3256-22	2	Washer-Flat
43	3256-3	1	Washer-Flat
44	3256-4	1	Washer-Flat
45	13-2840	1	Key-Square
46	5-1077	2	Key-Square
47	3290-357	8	Nut-HHF, Whiz
48	32128-33	2	Nut-HF
49	1-805004	2	Washer-Lock
50	321-3	2	Screw-HH
51	103-7262	2	Pump-HYD
●51:1	103-7441	1	Bearing-Shaft, Input
●51:2	103-7443	1	Cylinder Block Kit
●51:3	103-8448	1	Thrust Bearing Kit
●51:4	105-6184	1	Overhaul Seal Kit



Deluxe Seat Assembly No. 110-0838

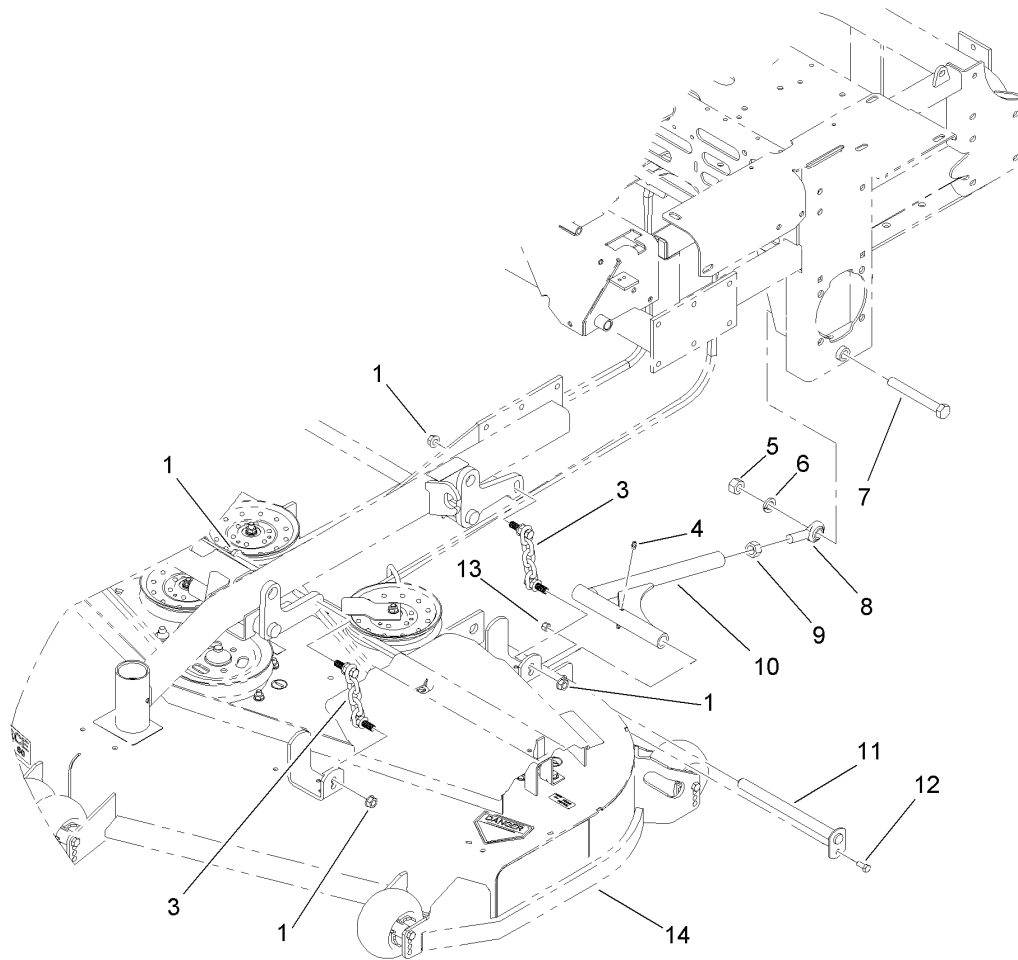
Ref	Part No.	Qty.	Description
1		1	Seat ASM
1:1	107-1880	1	Seat Track Kit
1:2	107-1885	1	Weight Indicator Kit
1:3	107-1881	1	Knob Kit
1:4	107-1883	1	Bottom Cushion Kit
1:5	107-1886	1	Switch Kit
1:6	107-1887	1	Armrest Kit
1:7	107-1884	1	Shock Absorber Kit
1:8	107-1882	1	Back Cushion Kit
4	110-0883	1	Retractable Seatbelt Kit
4:2	3212-4	2	Screw-HH
4:3	3296-7	2	Nut-Lock



Roll-Over-Protection-System Assembly No. 108-1097

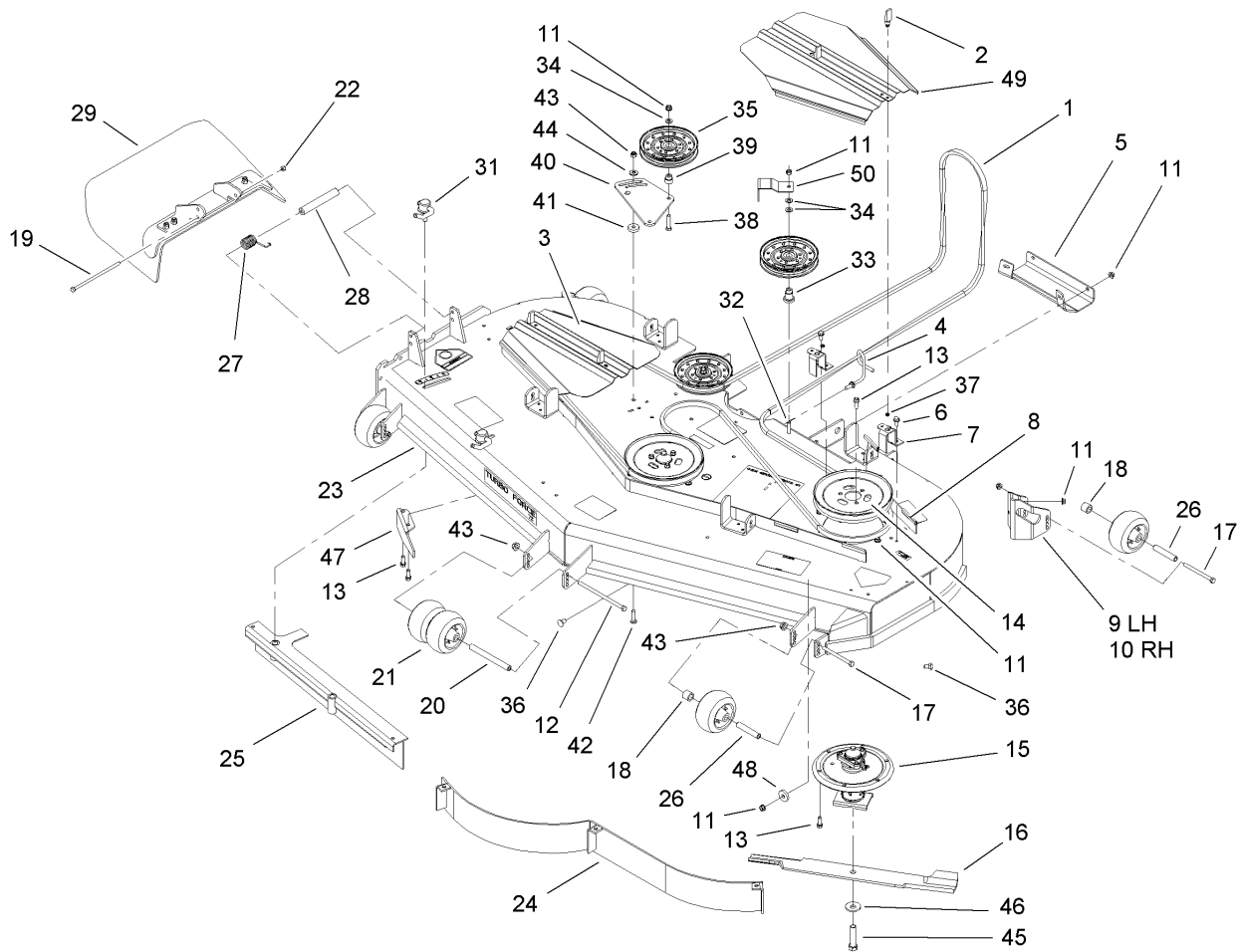
Ref	Part No.	Qty.	Description
1		1	Upper Tube ASM
1:2	107-2101	1	Decal-ROPS
1:3	107-2102	1	Decal-Warning, Folding ROPS
2	107-3154	2	Nut-Push
4	103-4553	2	ROPS Fold Pin ASM
5	325-13	2	Screw-HH
6	32128-23	2	Nut-HF
13	106-0887	2	Knob
14	107-3124	2	Clip
16	107-3052-03	1	Seat Support Frame ASM
17	107-3058	1	Catch-Latch, Seat
18	322-3	2	Screw-HH
19	3296-29	2	Nut-Lock, NI
20	3296-39	1	Nut-Lock, NI
23	323-20	1	Screw-HH
24	107-0076	1	Spring-Torsion
25	107-0075	1	Bushing-Latch, Seat
26	103-4434	1	Grip-Lever
28	3256-24	1	Washer-Flat
29	107-3083	1	Latch ASM
34	110-0883	1	Retractable Seatbelt Kit
34:2	3212-4	2	Screw-HH
34:3	3296-7	2	Nut-Lock
54		1	Bag-Bolt, ROPS

Ref	Part No.	Qty.	Description
54:3	323-6	8	Screw-HH
54:4	98-5975	8	Washer-Belleville
54:5	3290-357	8	Nut-HHF, Whiz



Deck Connection Assembly

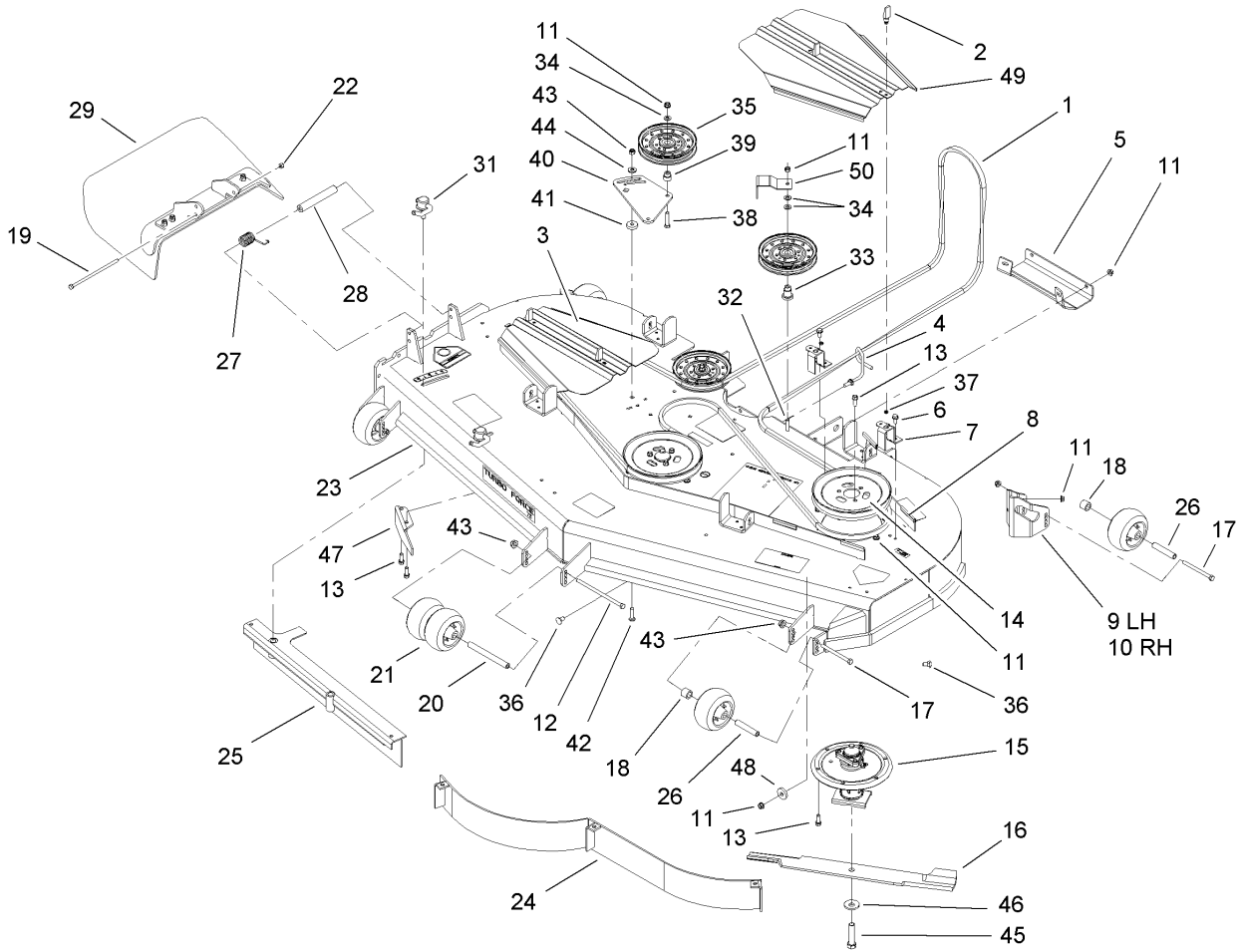
Ref	Part No.	Qty.	Description
1	32128-37	8	Nut-HF
3	103-9792	4	Deck Chain ASM
4	302-19	4	Fitting-Grease
5	3217-11	2	Nut-Hex
6	3253-8	2	Washer-Lock
7	327-11	2	Screw-HH
8	1-633029	2	Balljoint-Spherical
9	3219-6	2	Nut-Hex
10	103-1072-01	2	Strut
11	1-632199-01	2	Pin-Strut
12	322-3	2	Screw-HH
13	3296-29	2	Nut-Lock, NI
14		1	Deck ASM



Deck Assembly

Ref	Part No.	Qty.	Description
1	106-7350	1	Belt
2	74-5950	4	Latch-Swell
3	105-8786-03	1	Cover-Belt
4	106-3220	1	Guide-Belt
5	106-3279-01	1	Plate-Skid
6	32144-70	4	Screw-HH
7	108-4121-01	4	Bracket-Cover
8	105-7699	8	Strip-Seal
9	106-7354-01	1	Plate-Roller, LH
10	106-7355-01	1	Plate-Roller, RH
11	3290-357	38	Nut-HHF, Whiz
12	323-28	1	Screw-HH
13	92-1624	33	Screw
14	105-7733	3	Pulley
15	106-3217	3	Spindle ASM
16	105-7784-03	3	Blade-Hi Flow, 24.5 Inch
17	323-23	4	Screw-HH
18	98-7913	4	Tube-Spacer
19	322-50	1	Screw-HH
20	98-5967	1	Spacer-Wheel
21	1-603299	6	Roller-Scalp, Anti
22	3296-29	1	Nut-Lock, NI
23	107-1625	1	Deck ASM
24	105-7730-01	1	Baffle ASM

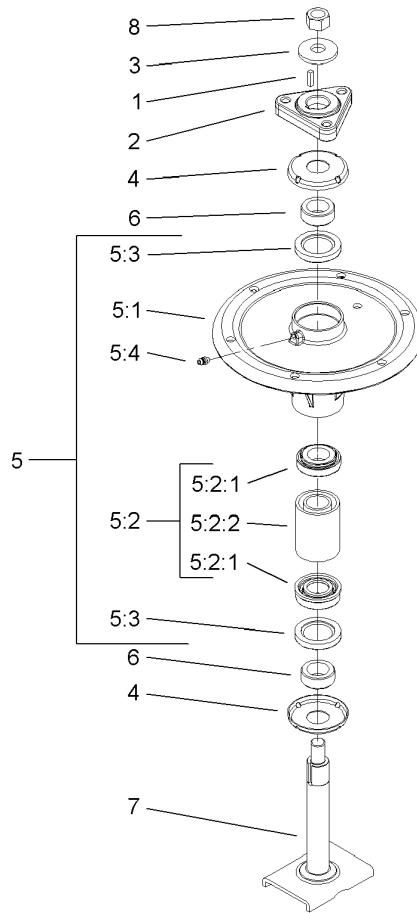
Ref	Part No.	Qty.	Description
25	105-7669-01	1	Baffle ASM
26	98-7912	4	Tube-Spanner
27	108-4052	1	Spring-Torsion
28	105-4622	1	Spacer
29	108-2792	1	Rubber Deflector ASM
30	107-1664	2	Lever ASM
31	107-1664	2	Lever ASM
32	323-12	2	Screw-HH
33	106-3214	2	Mount-Pulley
34	3256-24	4	Washer-Flat
35	1-633109	3	Idler-Flat
36	3231-1	10	Screw-CARR
37	99-3058	4	Washer
38	323-9	1	Screw-HH
39	1-603496	1	Bushing-Idler
40	105-7787-01	1	Plate-Idler
41	105-7788	2	Spacer
42	3231-4	2	Screw-CARR
43	3296-39	7	Nut-Lock, NI
44	98-5975	1	Washer-Belleville
45	103-0862	3	Screw-Cap
46	103-0865	3	Washer-Blade Bolt, Heavy
47	106-3216-01	1	Baffle-Discharge
48	112843	1	Washer
49	106-3275-03	1	Cover-Belt



Deck Assembly (continued)

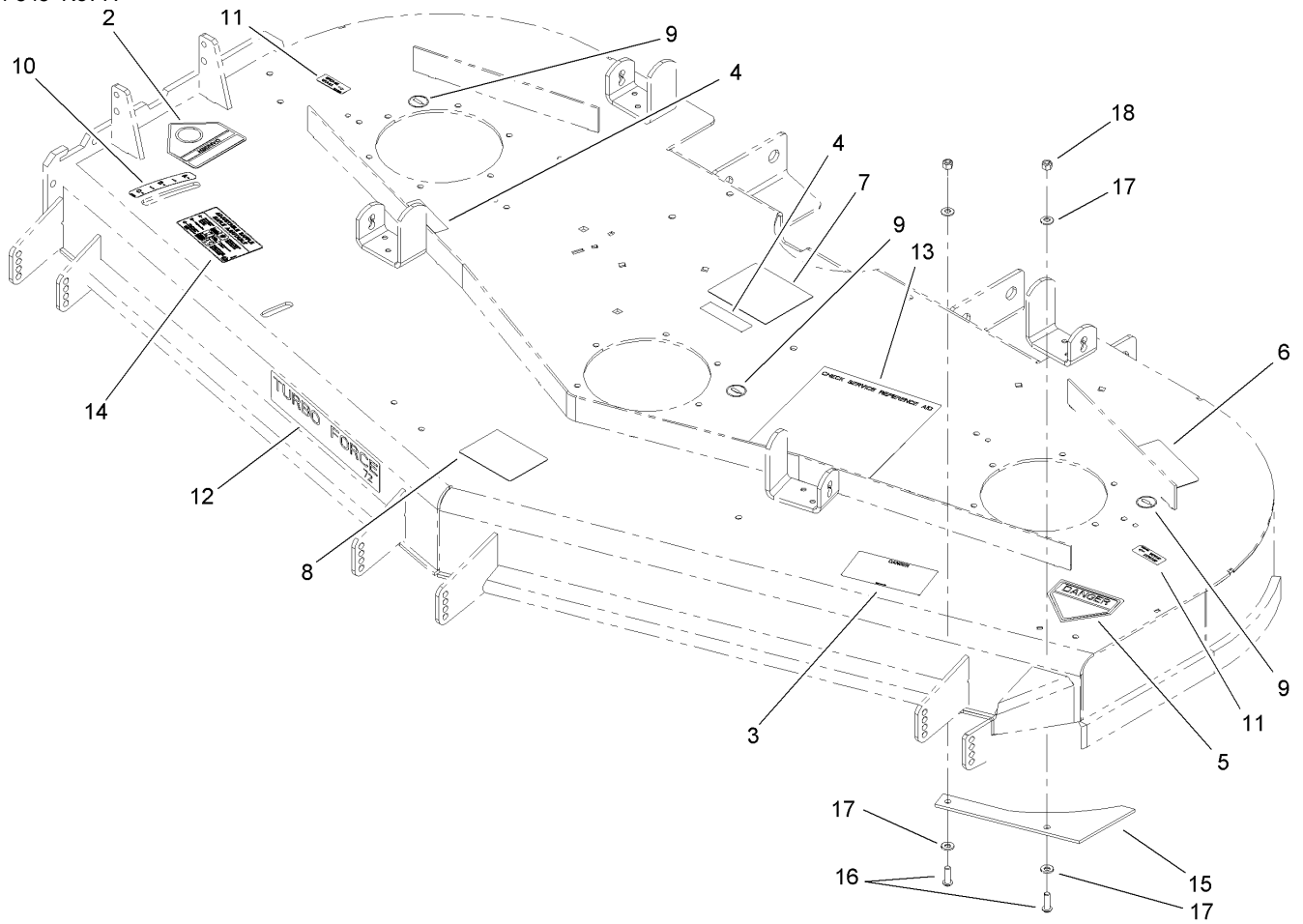
Ref	Part No.	Qty.	Description
50	108-7220-01	1	Guide-Belt
1 99	105-7712-03	3	Blade-Lo Flow, 24.5 Inch
1 99	105-7711-03	3	Blade-Mid Flow, 24.5 Inch
1 99	105-7719-03	3	Blade-Atomic, 24.5 Inch
1 99	105-7778-03	3	Blade-Recycler, 24.5 Inch

--	--	--	--



Spindle Assembly No. 106-3217

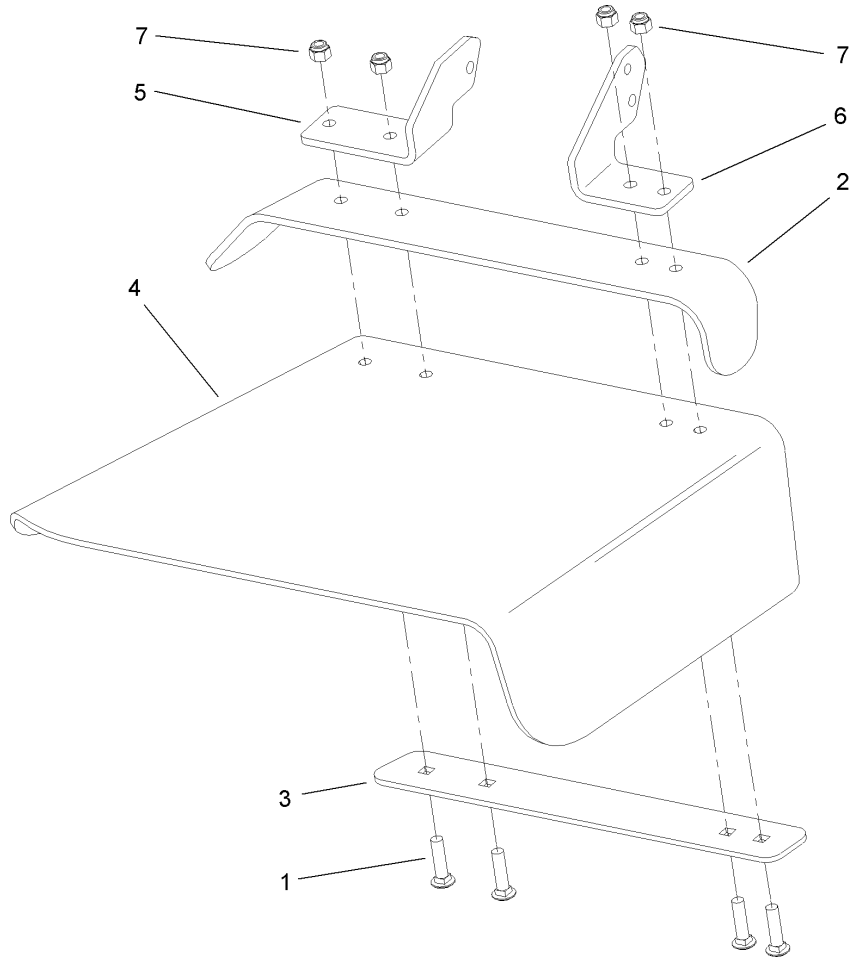
Ref	Part No.	Qty.	Description				
1	10-8040	1	Key-Square				
2	106-3277	1	Hub-Pulley				
3	103-0865	1	Washer-Blade Bolt, Heavy				
4	106-3204	2	Shield-Bearing				
5		1	Spindle Bearing ASM				
5:1	106-3211	1	Housing-Spindle				
5:2	106-3207	1	Bearing ASM				
5:2:1	27-0960	1	Bearing ASM				
5:2:2	106-3206	1	Spacer-Set, Matched				
5:3	253-133	2	Seal-Oil				
5:4	302-5	1	Fitting-Grease				
6	106-3218	2	Spacer-Seal				
7	106-3233	1	Spindle Shaft ASM				
8	3219-6	1	Nut-Hex				



Deck and Decal Assembly No. 107-1625

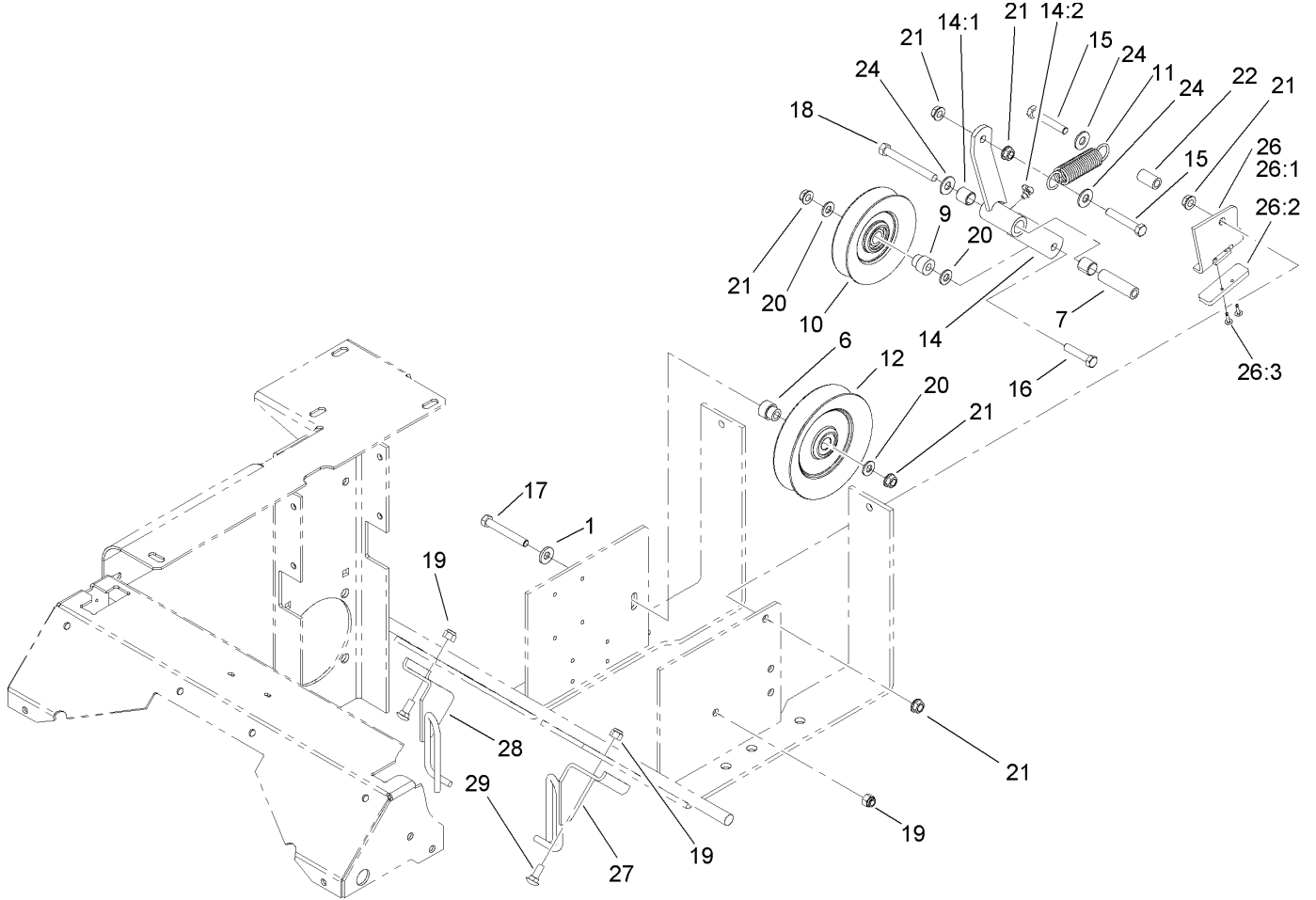
Ref	Part No.	Qty.	Description
2	54-9220	1	Decal-Danger
3	66-1340	1	Decal-Danger
4	98-5954	3	Decal-Missing, Cover
5	1-403005	1	Decal-Danger
6	68-8340	1	Decal-Torque
7	105-7797	1	Decal-Routing, Belt
8	105-7798	1	Decal-Scalp, Anti
9	58-6520	3	Decal-Grease
10	110-2067	1	Decal-Setting, Baffle
11	107-1613	2	Decal-Grease
12	107-1620	1	Decal
13	107-1621	1	Decal-Service, Check
14	110-2068	1	Decal-Adjustment, Baffle
15	107-3138	1	Plate-Turbo
16	3274-104	2	Screw-HSBH
17	1-303334	4	Washer-Spring
18	3296-29	2	Nut-Lock, NI

Ref	Part No.	Qty.	Description



Rubber Deflector Assembly No. 108-2792

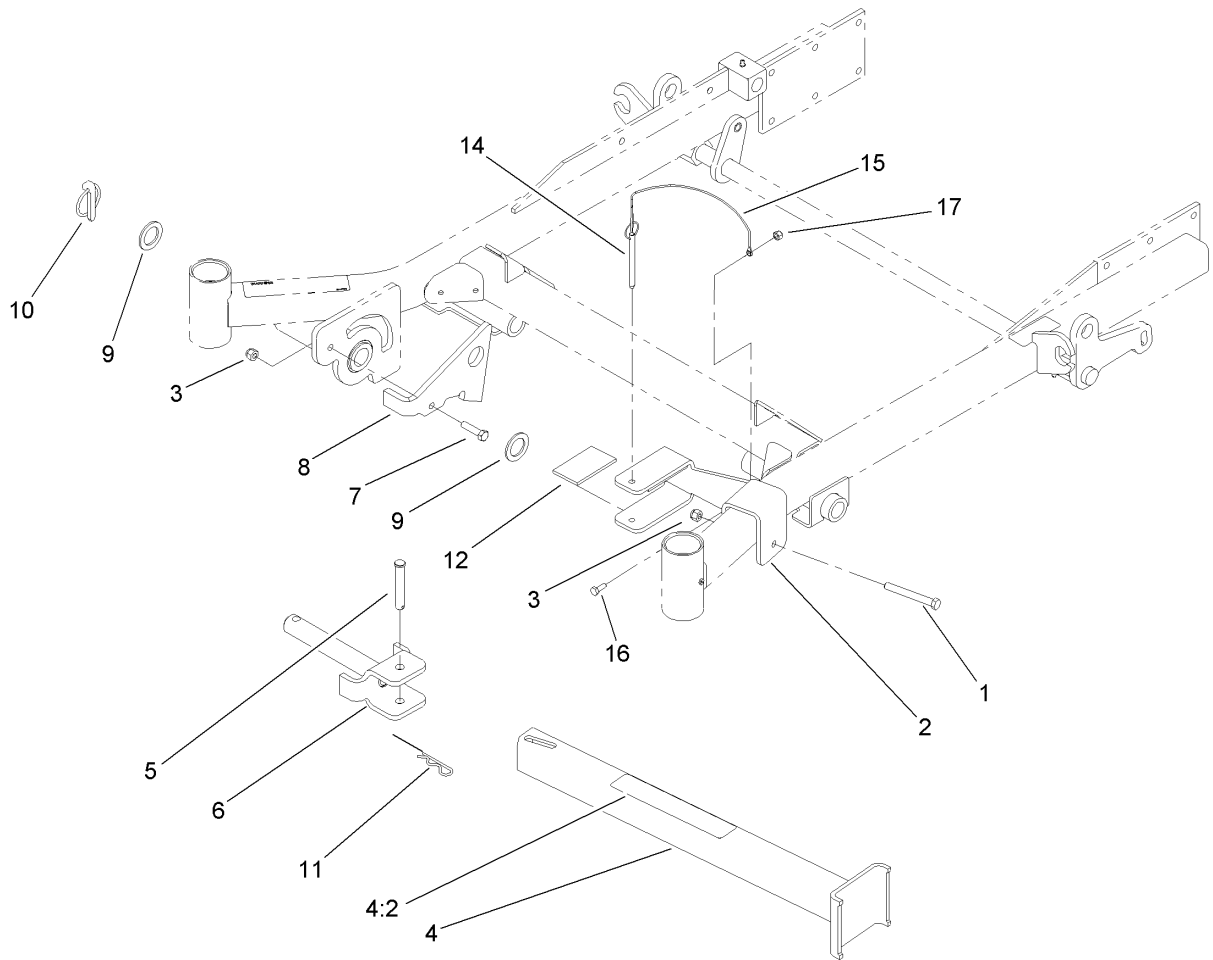
Ref	Part No.	Qty.	Description
1	3231-4	4	Screw-CARR
2	106-3246-01	1	Deflector
3	106-3248-03	1	Strap-Discharge
4	108-5029	1	Deflector-Rubber
5	108-4059-01	1	Plate-Hinge, Rear
6	106-3253-01	1	Plate-Hinge, Front
7	3296-39	4	Nut-Lock, NI



Drive Idler Assembly

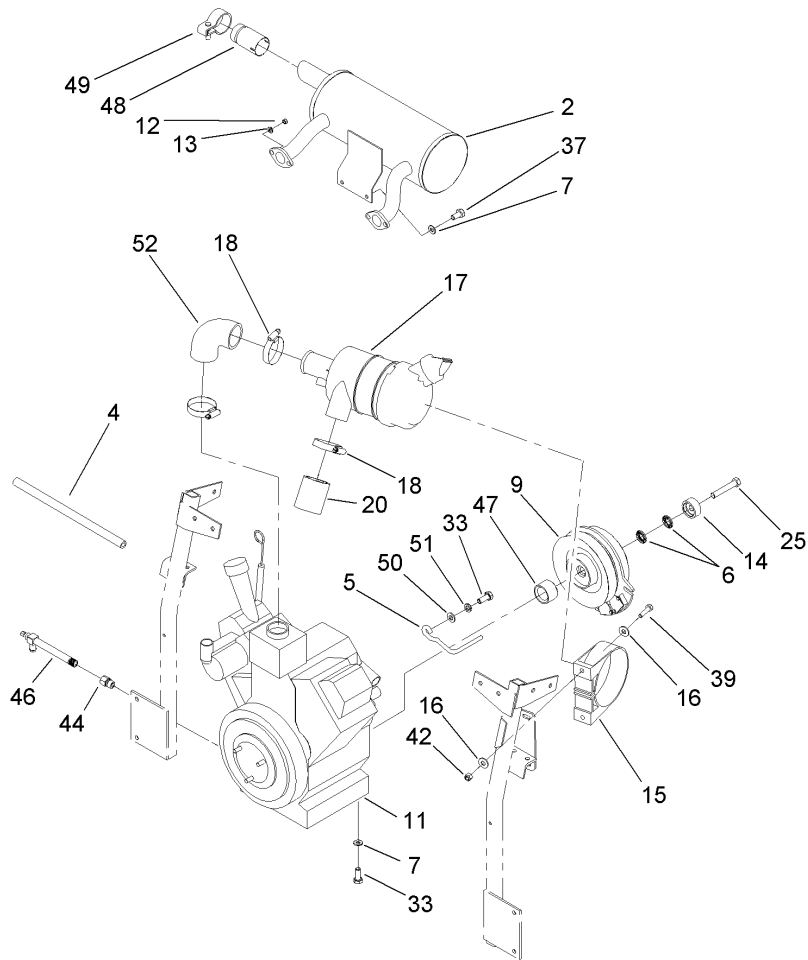
Ref	Part No.	Qty.	Description
1	98-5975	1	Washer-Belleville
6	103-2627	1	Bushing-Idler
7	1-603384	1	Bushing-Pivot, Idler
9	1-603496	1	Bushing-Idler
10	99-4638	1	Idler
11	1-603402	1	Spring-Extension
12	1-633166	1	Pulley-Idler
14	103-3147	1	Arm ASM
14:1	1-513034	2	Sleeve-Bearing
14:2	302-40	1	Fitting-Grease
15	323-12	2	Screw-HH
16	323-9	1	Screw-HH
17	323-13	1	Screw-HH
18	1-800805	1	Screw-HH
19	3296-39	3	Nut-Lock, NI
20	3256-24	3	Washer-Flat
21	3290-357	6	Nut-HHF, Whiz
22	1-603401	1	Spacer-Fender
24	3256-4	3	Washer-Flat
26	106-3271	1	Travel Limiter ASM
26:1	106-3228-03	1	Plate-Limiter, Pulley
26:2	106-3229	1	Pad-Bumper
26:3	3269-24	2	Rivet
27	108-7204-03	1	Guide-Belt, LH

Ref	Part No.	Qty.	Description
28	108-7229-03	1	Guide-Belt, RH
29	3231-2	2	Screw-CARR



Z-Stand Assembly

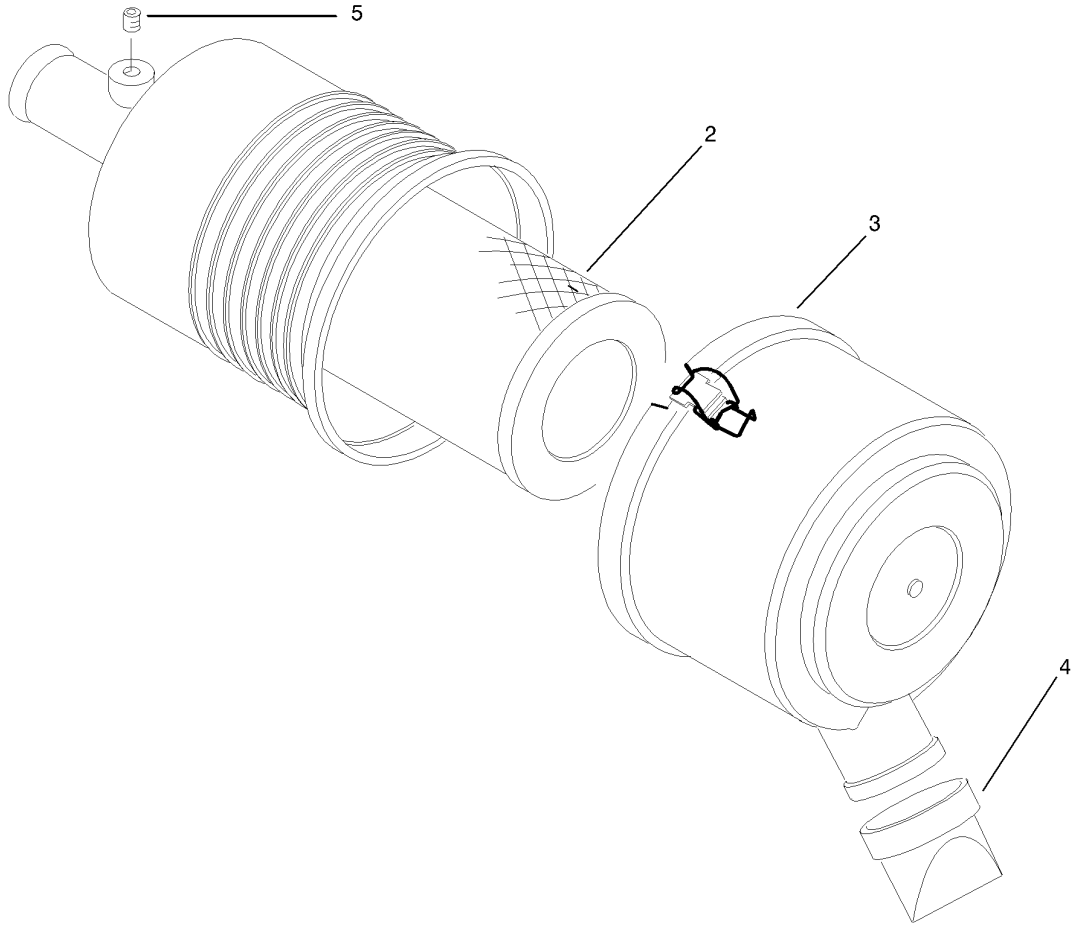
Ref	Part No.	Qty.	Description
1	323-20	1	Screw-HH
2	100-6542-01	1	Bracket-Cradle
3	3296-39	2	Nut-Lock, NI
4	107-1874	1	Leg ASM
4:2	106-7464	1	Decal-Z Stand
5	283-55	1	Pin-Clevis
6	100-9692-01	1	Pivot Pin ASM
7	323-8	1	Screw-HH
8	100-9686-01	1	Bracket-Latch
9	3-6781	2	Washer-Thrust
10	283-71	1	Pin-Lynch
11	3290-355	1	Pin-Hair
12	100-6547	2	Cushion-Rubber
14	105-1647	1	Pin-Hitch, Cotterless
15	100-9385	1	Lanyard-Nylon
16	321-4	1	Screw-HH
17	3296-42	1	Nut-Lock, NI



Engine and Clutch Assembly

Ref	Part No.	Qty.	Description
2	103-2759	1	Muffler
4	106-7022	1	Tube-Drain, Oil
5	52-4780	1	Rod-Belt
6	1-603610	2	Washer-Spring
7	1-303334	6	Washer-Spring
9	103-6589	1	Clutch
11		1	Engine-Kawasaki, Fd750D-Bs03
12	33013-00	4	Nut-Hex
13	1-805004	4	Washer-Lock
14	103-0152	1	Keeper-Clutch
15	95-5806	1	Bracket-Mounting
16	3256-3	4	Washer-Flat
17	95-5805	1	Air Cleaner ASM
18	1-643009	1	Clamp-Hose
20	1-643084	1	Hose-Inlet, Air
25	48-7570	1	Screw-HH
33	33115-025	5	Screw-HH
37	33115-020	2	Screw-HH
39	322-6	3	Screw-HH
42	3296-29	2	Nut-Lock, NI
44	103-1966	1	Adapter
46	92-6877	1	Valve-Drain, Oil
47	103-0114	1	Spacer-Clutch
48	103-1511	1	Arrestor-Spark

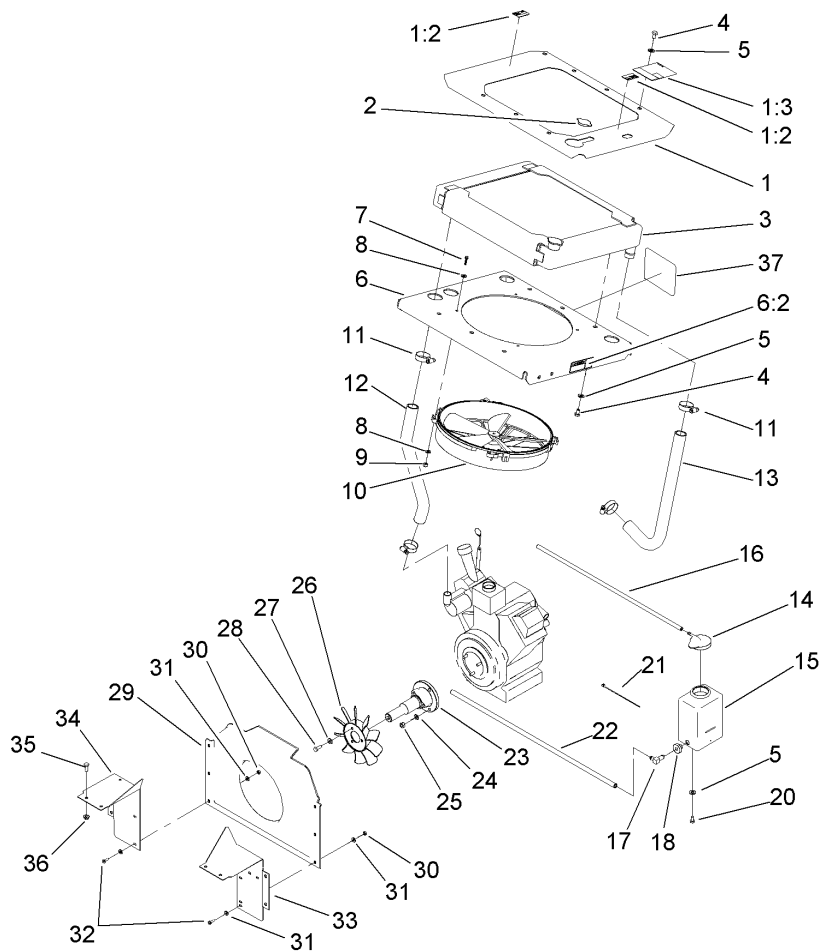
Ref	Part No.	Qty.	Description
49	103-1512	1	Clamp-Muffler
50	3256-24	1	Washer-Flat
51	98-5975	1	Washer-Belleville
52	1-643083	1	Hose-Aircleaner



Air Cleaner Assembly No. 95-5805

Ref	Part No.	Qty.	Description
2	108-3811	1	Filter-Air
3	94-3652	1	Cover ASM
4	87-9400	1	Valve-Vacuator
5	285-17	1	Plug-Pipe

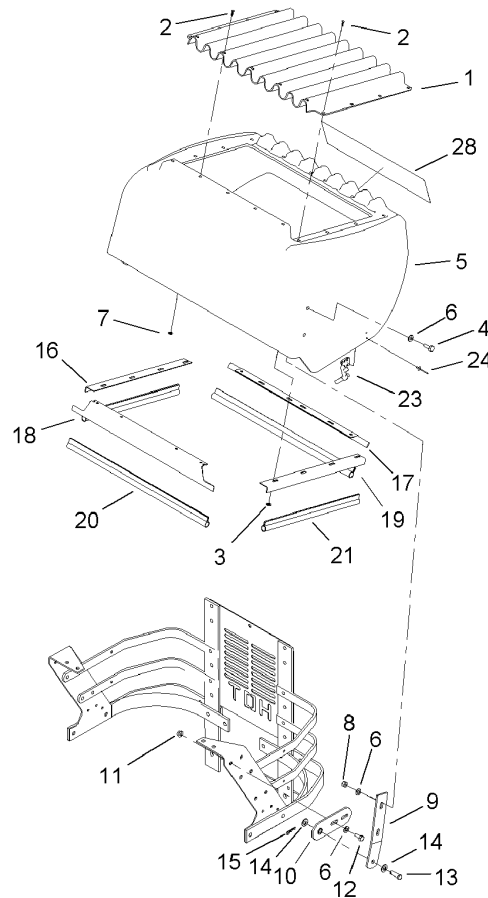
Ref	Part No.	Qty.	Description



Cooling System Assembly

Ref	Part No.	Qty.	Description
1	104-7843	1	Radiator Trim Plate ASM
1:2	65-2690	2	Decal-Surface, Hot
1:3	104-2449	1	Decal-Coolant
2	1-643161	1	Cap-Radiator
3	103-1046	1	Radiator-Mount
4	322-1	12	Screw-HH
5	3256-23	14	Washer-Flat
6	100-4301	1	Fan Mounting Plate ASM
6:2	1-643253	2	Decal-Fan, Radiator
7	1-803067	4	Screw
8	3256-16	8	Washer-Flat
9	1-804254	4	Nut
10	1-633831	1	Fan
11	1-633989	4	Clamp-Hose
12	103-0074	1	Hose-Inlet, Radiator
13	103-0075	1	Hose-Outlet, Radiator
14	1-643164	1	Cap-Tank, Overflow
15	1-643163	1	Tank-Overflow
16	1-643131	1	Hose
17	1-643259	1	Fitting-Elbow
18	1-513645	1	Bushing-Valve, Fuel
20	321-2	2	Screw-HH
21	1-303287	3	Tie-Plastic
22	109-0041	1	Hose, Overflow

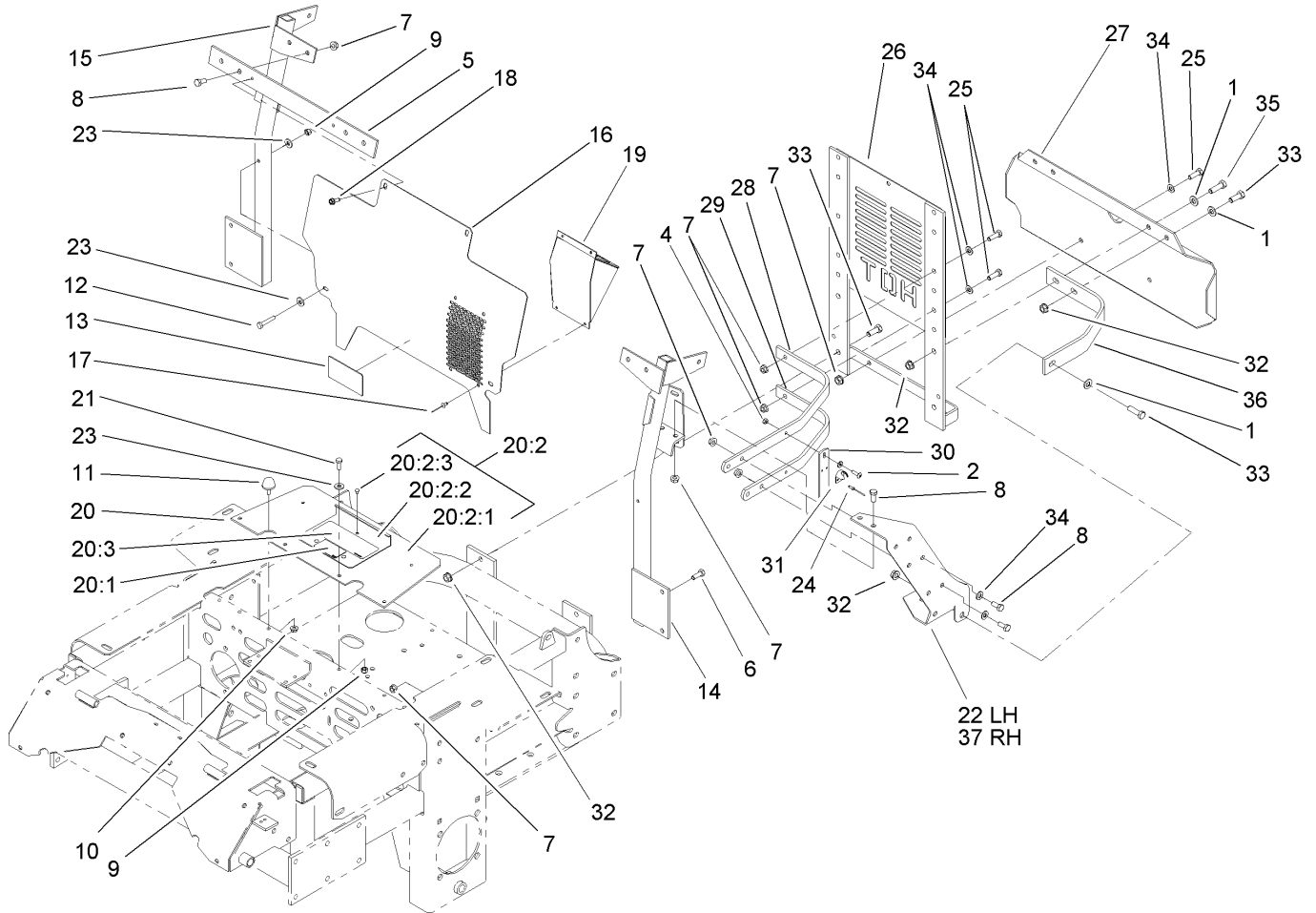
Ref	Part No.	Qty.	Description
23	1-633851	1	Extension-Crankshaft
24	3255-8	3	Washer-Lock
25	33014-00	3	Nut-Hex
26	1-633869	1	Fan-Pump, Cooling
27	3256-22	3	Washer-Flat
28	1-809095	3	Screw-HSH
29	103-0098	1	Shroud-Fan, HYD
30	3296-2	6	Nut-Lock
31	3256-14	12	Washer-Flat
32	3290-500	6	Screw-PPH
33	103-0895-03	1	Shield-LH
34	1-633794-03	1	Shield-RH
35	321-4	6	Screw-HH
36	32128-33	6	Nut-HF
37	103-3270	1	Decal



Hood Assembly

Ref	Part No.	Qty.	Description
1	1-633864-03	1	Screen-Radiator
2	1-803072	17	Rivet
3	3256-14	12	Washer-Flat
4	322-4	4	Screw-HH
5	104-5136	1	Hood
6	3256-23	10	Washer-Flat
7	1-303435	5	Washer-Spring
8	3296-29	4	Nut-Lock, NI
9	1-633885-03	2	Plate-Hinge, Hood
10	1-632986-03	2	Shackle-Hinge
11	32128-20	25	Nut-HF
12	322-3	16	Screw-HH
13	1-808285	2	Pin-Clevis
14	3256-24	6	Washer-Flat
15	1-806003	2	Pin-Hair
16	1-643106-03	1	Angle-Radiator, RH
17	1-643108-03	1	Angle-Radiator, Bottom
18	1-643107-03	1	Angle-Radiator, Top
19	1-643105-03	1	Angle-Radiator, LH
20	1-643187	2	Seal-Trim
21	1-643186	2	Seal-Trim
23	1-643188	2	Latch-Rubber
24	923786	4	Rivet
28	106-7456	1	Decal

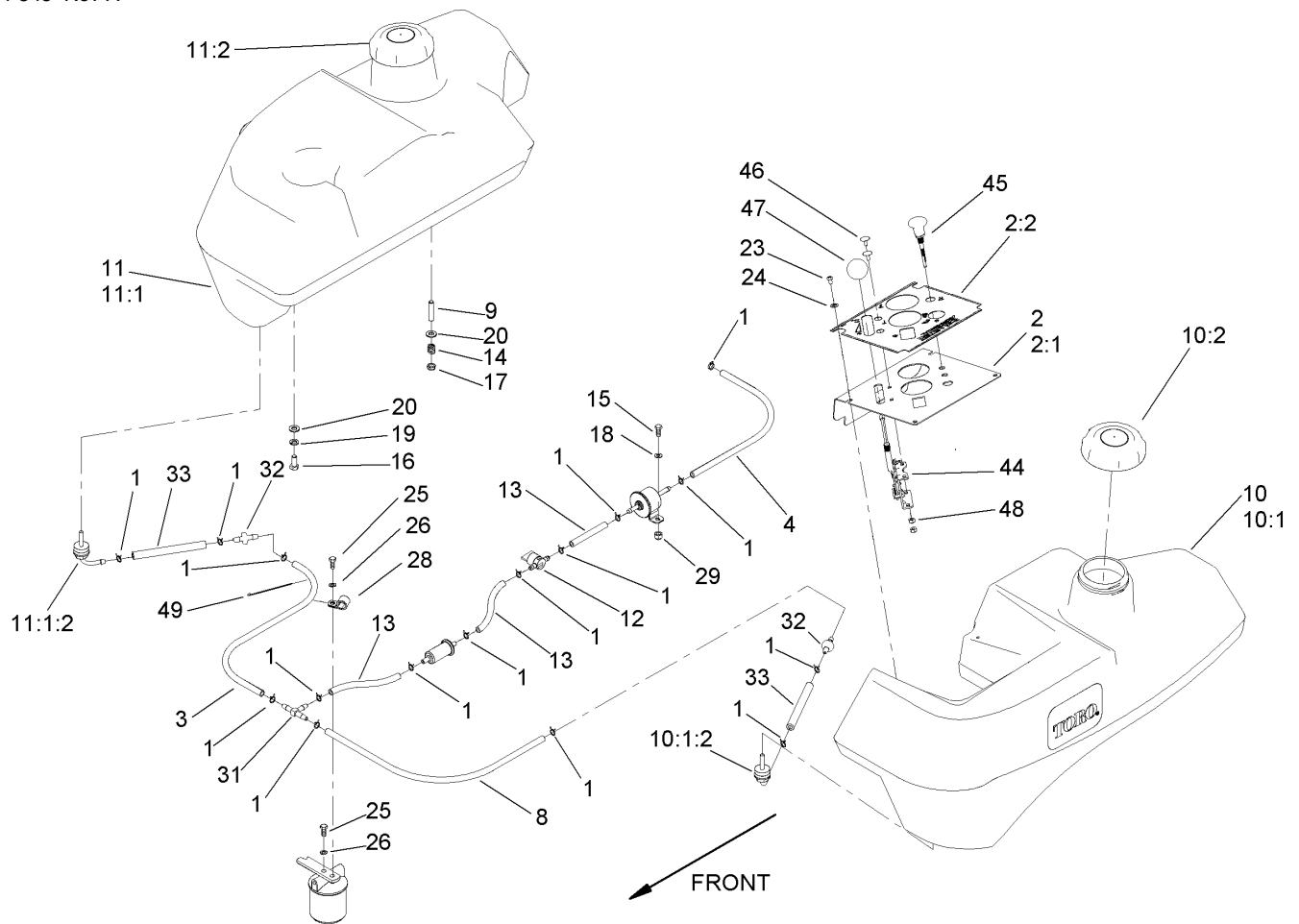
--	--	--	--



Cooling Mounting Frame Assembly

Ref	Part No.	Qty.	Description
1	3256-24	6	Washer-Flat
2	1-803075	4	Screw-Head, Truss
4	3296-2	4	Nut-Lock
5	1-633878-03	1	Crossbar
6	322-4	4	Screw-HH
7	32128-20	12	Nut-HF
8	322-3	8	Screw-HH
9	3296-42	6	Nut-Lock, NI
10	32128-33	2	Nut-HF
11	1-523420	2	Bumper
12	321-9	2	Screw-HH
13	1-643339	1	Decal-Routing, Belt
14	103-0107-03	1	Brace-Radiator, LH
15	1-632985-03	1	Brace-Radiator, RH
16	103-2870-03	1	Deflector-Air
17	3269-3	4	Rivet-Pop
18	49-2040	2	Screw-HWHTF
19	103-0110-03	1	Plenum-Intake, Air
20	1-644276	1	Shield ASM
20:1	1-633462	1	Decal-Important
20:2	1-634308	1	Shield/Lift ASM
20:2:1	103-1308	1	Shield-Engine
20:2:2	1-633300-03	1	Lift-Shield
20:2:3	1-803035	3	Rivet-Pop

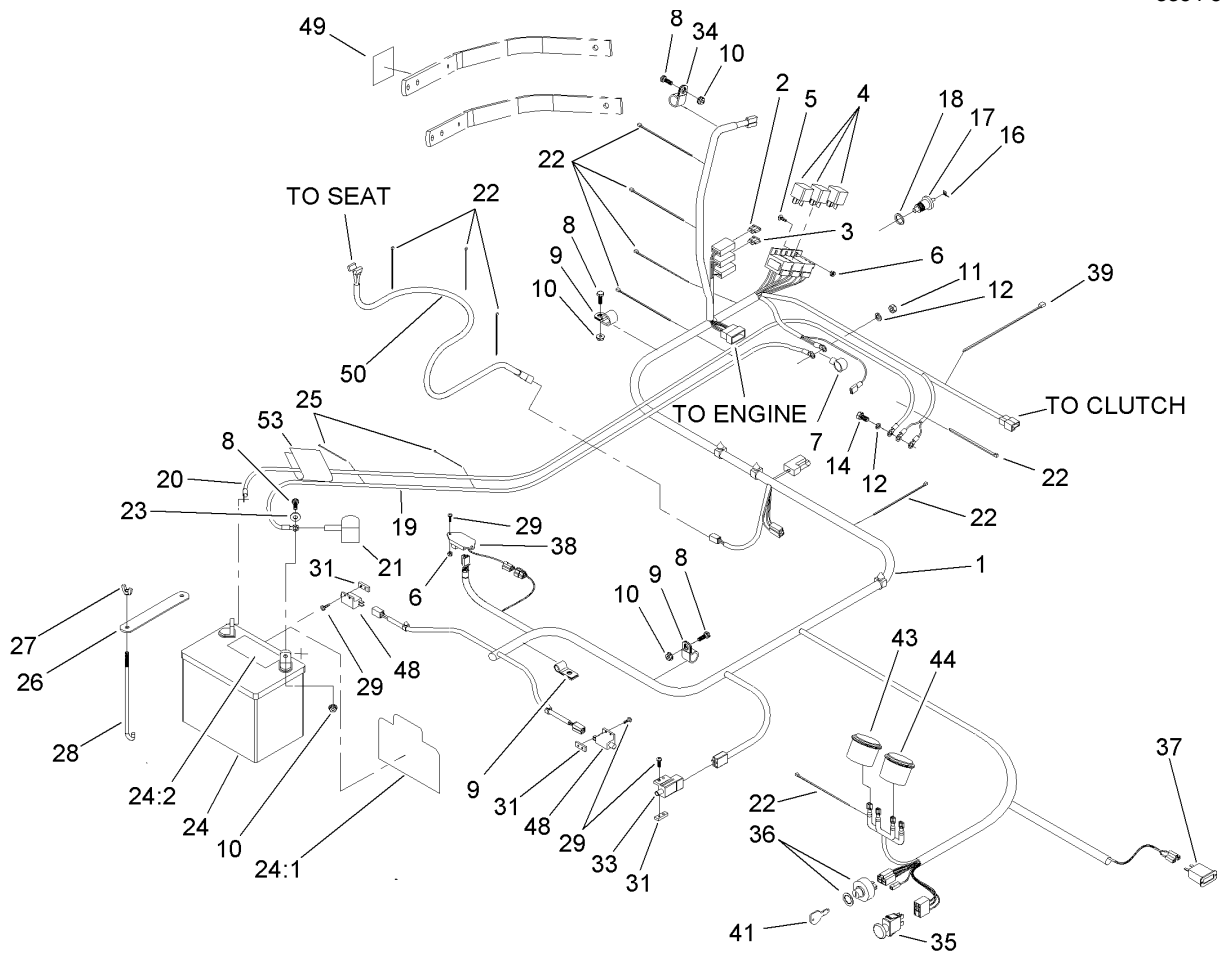
Ref	Part No.	Qty.	Description
20:3	103-5881	1	Decal-Devices, Rotating
21	321-4	4	Screw-HH
22	103-7452-03	1	Plate-Side, LH
23	3256-2	6	Washer-Flat
24	923786	4	Rivet
25	322-5	9	Screw-HH
26	1-632873-03	1	Mount-Radiator, Rear
27	1-633886-03	1	Guard-Bumper
28	1-633897-03	2	Rib-Top
29	1-633898-03	2	Rib-Bottom
30	1-633877-03	2	Bar-Hook, Latch
31	1-643189	2	Keeper-Latch, Rubber
32	3290-357	10	Nut-HHF, Whiz
33	323-6	6	Screw-HH
34	3256-23	11	Washer-Flat
35	323-7	4	Screw-HH
36	103-7623-03	2	Strap-Guard
37	103-7453-03	1	Plate-Side, RH



Fuel Tank Assembly

Ref	Part No.	Qty.	Description
1	1-303077	17	Clamp
2	110-9887	1	Control Panel ASM
2:1	110-3871-03	1	Panel-Control
2:2	110-5722	1	Decal-Panel, Control
3	109-0302	1	Hose-Fuel
4	110-4170	1	Hose-Fuel
8	110-1876	1	Hose-Fuel
9	1-633023	6	Stud
10	105-3644	1	LH Fuel Tank Kit ASM
②10:1		1	LH Fuel Tank ASM
10:1:2	103-2605	1	Fitting-Fuel, Bulkhead
10:2	109-0346	1	Cap-Fuel, Gas
11	105-3643	1	RH Fuel Tank Kit ASM
②11:1		1	RH Fuel Tank ASM
11:1:2	103-2605	1	Fitting-Fuel, Bulkhead
11:2	109-0346	1	Cap-Fuel, Gas
12	1-603770	1	Valve-Fuel
13	109-0660	3	Hose-Fuel
14	1-633349	6	Spring-Tank, Fuel
15	321-4	2	Screw-HH
16	322-3	2	Screw-HH
17	3296-47	6	Nut-Lock, NI
18	3256-2	2	Washer-Flat
19	1-805005	2	Washer-Lock

Ref	Part No.	Qty.	Description
20	3256-23	8	Washer-Flat
23	3251-1	4	Screw-PPH
24	1-303435	4	Washer-Spring
25	321-3	2	Screw-HH
26	1-805004	2	Washer-Lock
28	1-513762	1	Clip-Loom
29	32128-33	2	Nut-HF
31	99-5005	1	Fitting-Tee, Barbed
32	99-5000	2	Valve-Check, Fuel
33	109-0678	2	Hose-Fuel
44	110-5717	1	Cable-Throttle
45	110-5720	1	Control-Choke, Push / Pull
46	1-807513	2	Bolt-CARR
47	1-603175	1	Knob-Ball
48	3296-2	2	Nut-Lock
49	1-303335	4	Tie-Plastic

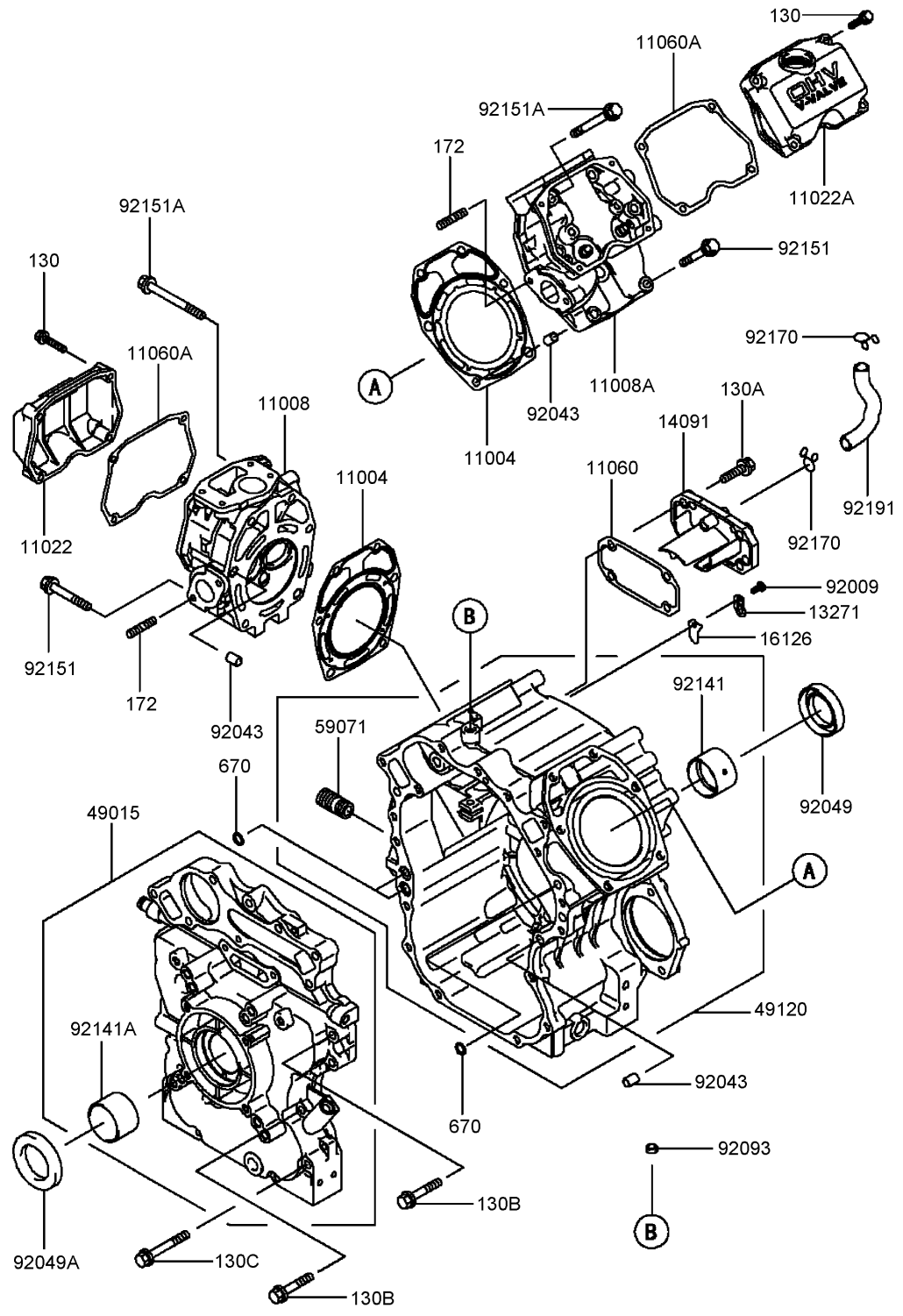


Electrical Components Assembly

Ref	Part No.	Qty.	Description
1	106-7496	1	Harness-Wire
2	1-816001	1	Fuse-Blade Type, 20 Amp
3	1-816003	1	Fuse-Blade Type, 30 Amp
4	1-643275	3	Relay
5	1-803071	2	Screw
6	3296-2	4	Nut-Lock
7	1-543393	1	Insulator-Solenoid
8	321-4	5	Screw-HH
9	1-633396	3	Clip-Loom
10	32128-33	5	Nut-HF
11	33014-00	1	Nut-Hex
12	3256-23	2	Washer-Flat
14	33114-016	1	Screw-HH
16	1-643145	1	Tab
17	103-0283	1	Sender-Temperature
18	1-643153	1	Washer-Aluminum
19	1-523279	1	Wire-Battery, Positive
20	1-633307	1	Wire-Ground
21	1-543391	1	Insulator-Battery
22	1-303335	10	Tie-Plastic
23	3256-2	2	Washer-Flat
24	105-1692	1	Battery
24:1	104-4163	1	Decal-Battery
24:2	104-4164	1	Decal-Battery

Ref	Part No.	Qty.	Description
25	1-303287	2	Tie-Plastic
26	107-9277-03	1	Strap-Holddown, Battery
27	1-543792	2	Wingnut
28	1-633651	2	Bolt-Holddown
29	3290-500	8	Screw-PPH
31	1-633181	3	Plate-Tapped
33	1-633111	1	Switch
34	1-513762	1	Clip-Loom
35	103-5221	1	Switch-PTO
36	103-0206	1	Switch-Starting, Key
37	1-513374	1	Meter-Hour
38	100-6186	1	Module-Delay, Seat
39	1-643115	1	Tie-Plastic
41	63-8360	2	Key-Ignition
43	1-643037	1	Gauge-Voltmeter
44	1-643021	1	Gauge-Temperature
48	1-513051	2	Switch-Open, Normally
49	103-1027	1	Decal-Relay
50	103-1227	1	Harness-Wiring, Seat
53	107-9309	1	Decal-Instructions, Charging

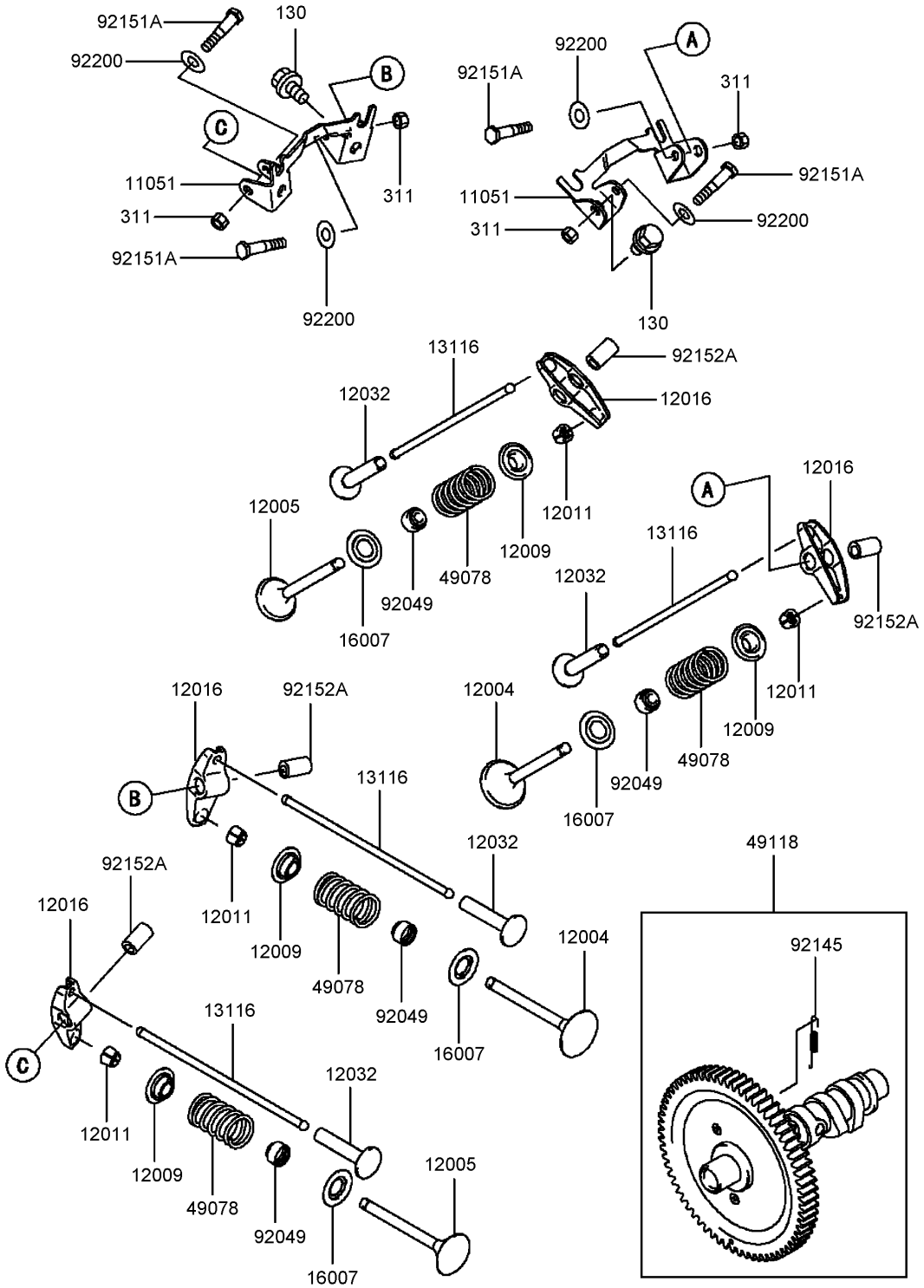
Cylinder and Crankcase Assembly Kawasaki FD750D-BS03



Cylinder and Crankcase Assembly Kawasaki FD750D-BS03

Ref	Part No.	Qty.	Description				
④11004	11004-2142	2	Gasket-Head				
④11008	11008-2145	1	Head-Cylinder				
④11008A	11008-2146	1	Head-Cylinder				
④11022	11022-2072	1	Case-Rocker				
④11022A	11022-2073	1	Case-Rocker				
④11060	11060-2466	1	Gasket-Breather				
④11060A	11060-2470	2	Gasket-Case, Rocker				
④13271	13271-2105	2	Plate				
④14091	14091-2064	1	Cover-Breather				
④16126	16126-2225	2	Valve-Breather				
④49015	49015-6232	1	Cover-Crankcase				
④49120	49120-6127	1	Crankcase				
④59071	59071-2079	1	Joint				
④92009	92009-2308	2	Screw				
④92043	92043-1037	6	Pin				
④92049	92049-2242	1	Seal-Oil				
④92049A	92049-2243	1	Seal-Oil				
④92093	92093-2086	1	Seal				
④92141	92141-2118	1	Bearing-Plane				
④92141A	92141-2119	1	Bearing-Plane				
④92151	92151-2158	4	Bolt				
④92151A	92151-2159	8	Bolt				
④92170	92170-2002	2	Clamp				
④92191	92191-2105	1	Tube				
④130	130G0630	8	Bolt-Flanged				
④130A	130G0830	4	Bolt-Flanged				
④130B	130G0845	6	Bolt				
④130C	130G0860	4	Bolt-Flanged				
④172	172G0822	4	Bolt-Stud				
④670	670B2011	3	O-Ring				

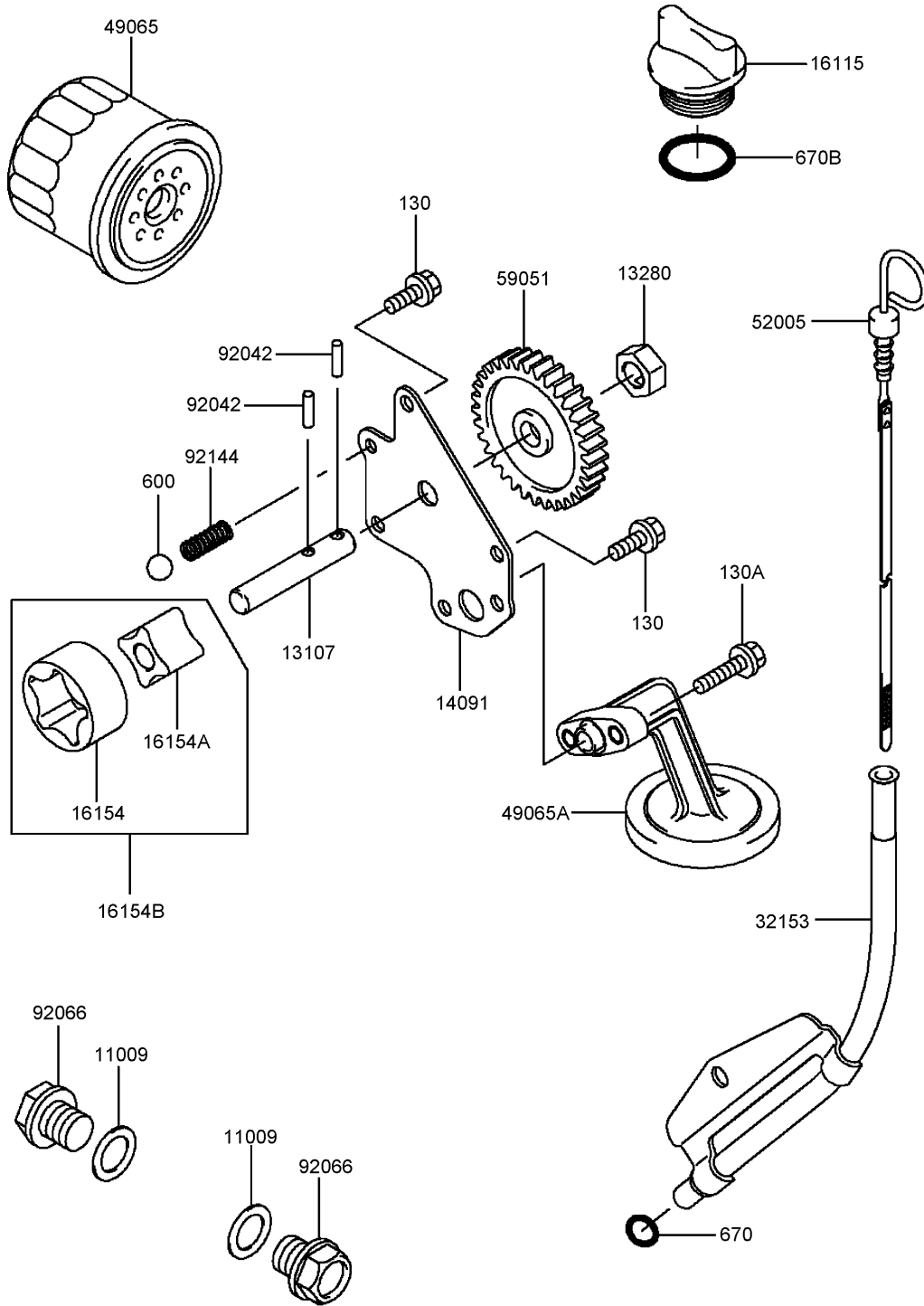
Valve and Camshaft Assembly Kawasaki FD750D-BS03



Valve and Camshaft Assembly Kawasaki FD750D-BS03

Ref	Part No.	Qty.	Description				
④ 11051	11051-2092	2	Bracket				
④ 12004	12004-2113	2	Valve-Intake				
④ 12005	12005-2100	2	Valve-Exhaust				
④ 12009	12009-2060	4	Retainer-Spring, Valve				
④ 12011	12011-2052	8	Collet				
④ 12016	12016-2063	4	Arm-Rocker				
④ 12032	12032-2060	4	Tappet				
④ 13116	13116-2074	4	Rod-Push				
④ 16007	16007-2052	4	Seat-Spring				
④ 49078	49078-2060	4	Spring-Valve, Engine				
④ 49118	49118-2138	1	Camshaft				
④ 92049	92049-2100	4	Seal-Oil				
④ 92145	92145-2085	1	Spring				
④ 92151A	92151-2165	4	Bolt-M6				
④ 92152A	92152-2077	4	Collar				
④ 92200	92200-2128	4	Washer				
④ 130	130G0814	4	Bolt-Flanged				
④ 311	311B0600	4	Nut-Hex				

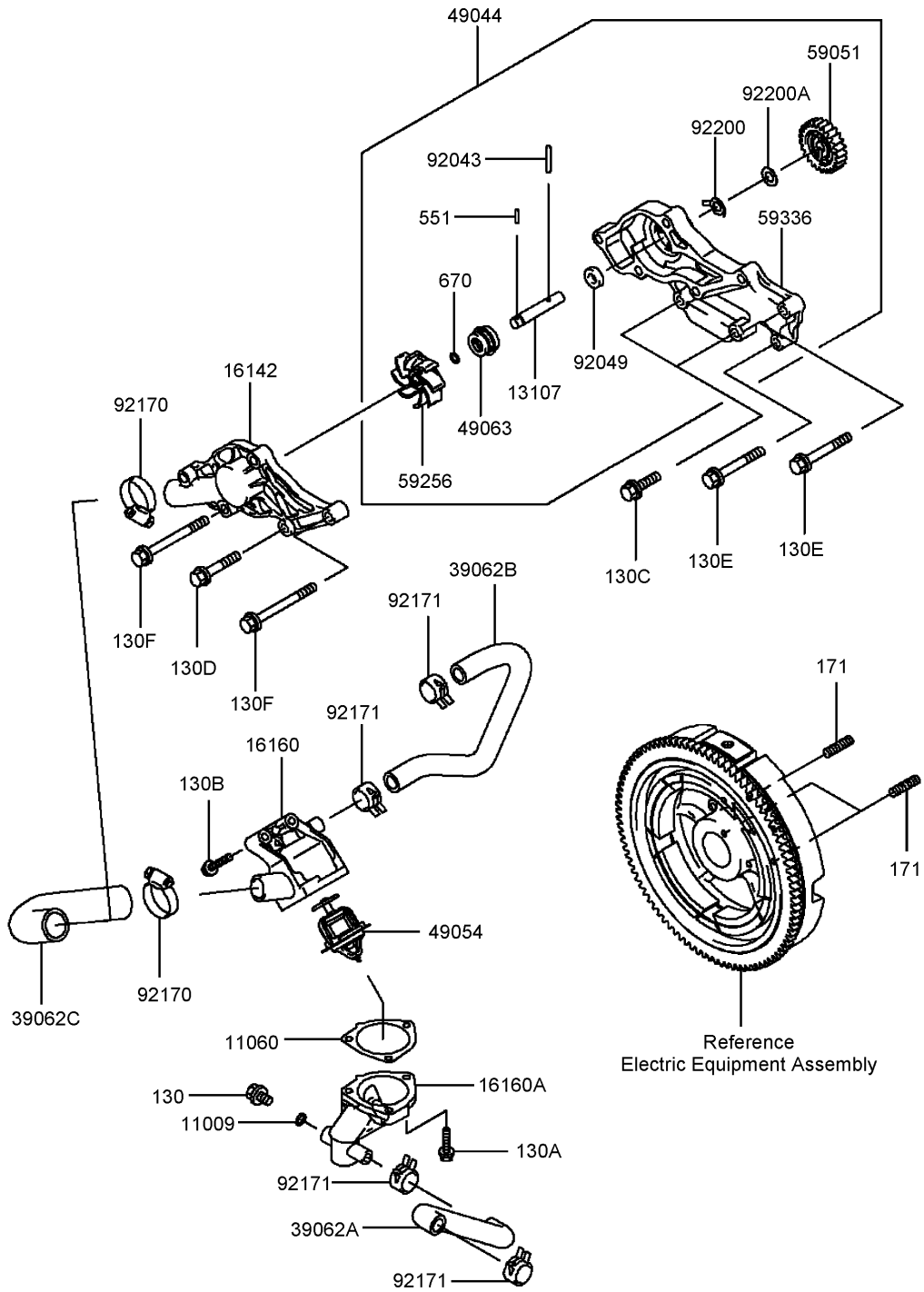
Lubrication Equipment Assembly Kawasaki FD750D-BS03



Lubrication Equipment Assembly Kawasaki FD750D-BS03

Ref	Part No.	Qty.	Description				
④ 11009	11009-2566	2	Gasket-Plug, Drain				
④ 13107	13107-2281	1	Shaft-Pump, Oil				
④ 13280	13280-2061	1	Holder-Pump, Oil				
④ 14091	14091-2065	1	Cover-Pump, Oil				
④ 16115	16115-2126	1	Cap-Filler, Oil				
④ 16154	16154-1075	1	Rotor-Pump, Outer				
④ 16154A	16154-1076	1	Rotor-Pump, Inner				
④ 16154B	16154-1079	1	Rotor-Pump				
④ 32153	32153-2076-9H	1	Pipe-Gauge, Oil				
④ 49065	49065-2071	1	Filter-Oil				
④ 49065A	49065-2082	1	Filter				
④ 52005	52005-2132	1	Gauge-Oil				
④ 59051	59051-2354	1	Gear-Spur, 33T				
④ 92042	92042-014	2	Pin				
④ 92066	92066-2099	2	Plug-Drain				
④ 92144	92144-2053	1	Spring				
④ 130	130G0616	3	Bolt				
④ 130A	130G0625	2	Bolt-Flanged				
④ 600	600A1300	1	Ball-Steel				
④ 670	670B2010	1	O-Ring (10Mm)				
④ 670B	670B3025	1	O-Ring				

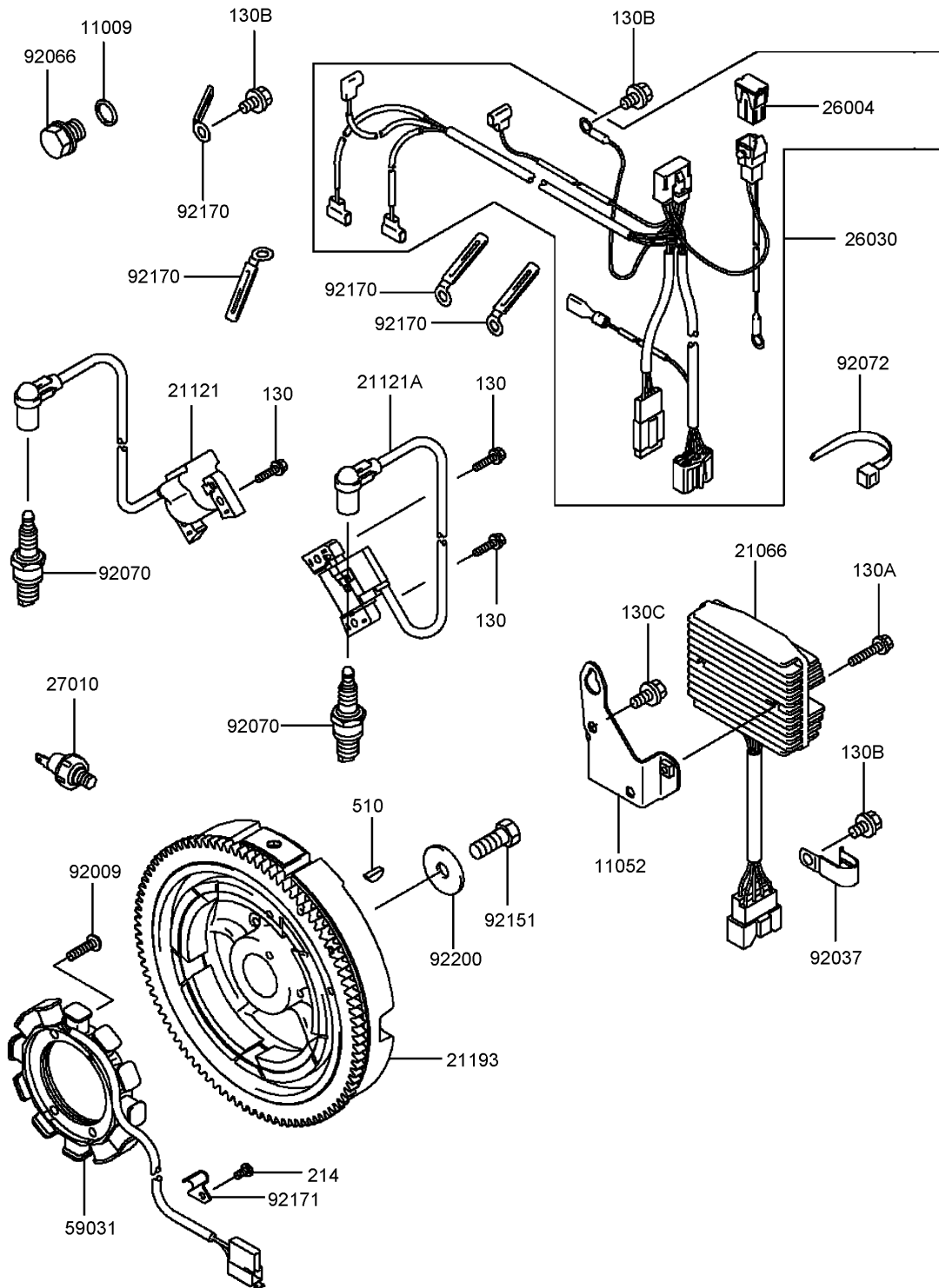
Cooling Equipment Assembly Kawasaki FD750D-BS03



Cooling Equipment Assembly Kawasaki FD750D-BS03

Ref	Part No.	Qty.	Description				
④11009	11009-3028	1	Gasket				
④11060	11060-2475	1	Gasket-Thermostat				
④13107	13107-2097	1	Shaft-Impeller				
④16142	16142-2077	1	Cover-Pump				
④16160	16160-2127	1	Body-Upper				
④16160A	16160-6002	1	Body-Valve				
④39062A	39062-2083	1	Hose-Cooling				
④39062B	39062-2084	1	Hose-Cooling				
④39062C	39062-2089	1	Hose-Cooling				
④49044	49044-2063	1	Pump-Water				
④49054	49054-2058	1	Thermostat				
④49063	49063-1054	1	Seal-Mechanical				
④59051	59051-2355	1	Gear-Spur, 25T				
④59256	59256-2069	1	Impeller				
④59336	59336-2078	1	Case-Pump				
④92043	92043-2237	1	Pin				
④92049	92049-2111	1	Seal-Oil				
④92170	92170-1284	2	Clamp				
④92171	92171-2056	4	Clamp				
④92200	92200-2134	1	Washer				
④92200A	92200-2135	1	Washer				
④130	130C0812	1	Bolt-Flanged				
④130A	130G0625	3	Bolt-Flanged				
④130B	130G0635	2	Bolt-Flanged				
④130C	130G0830	2	Bolt-Flanged				
④130D	130G0845	1	Bolt				
④130E	130G0860	2	Bolt-Flanged				
④130F	130G0880	4	Bolt-Flanged				
④171	171G0818	3	Bolt-Stud				
④551	551A0314	1	Pin-Dowel				
④670	670B1507	1	O Ring				

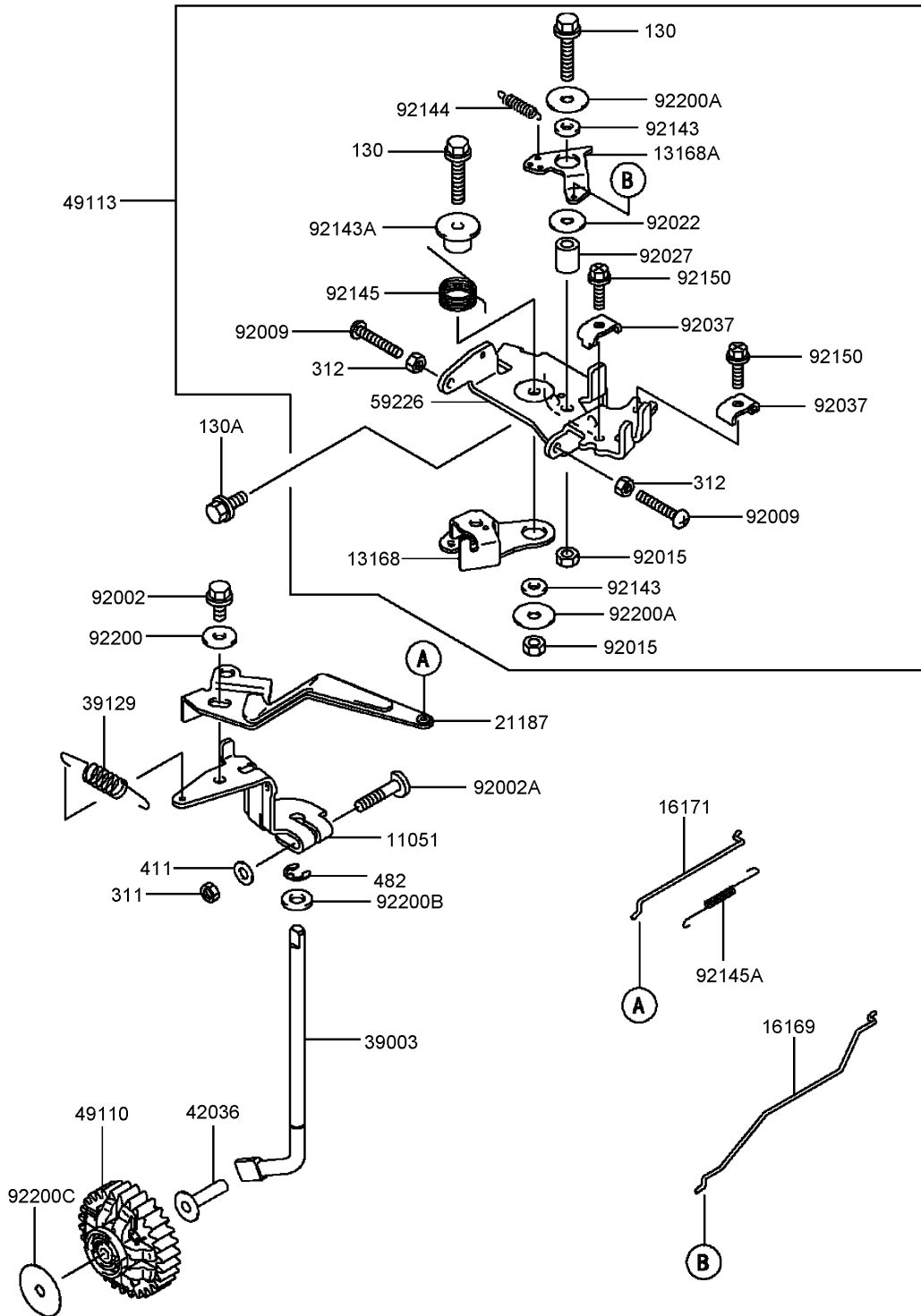
Electric Equipment Assembly Kawasaki FD750D-BS03



Electric Equipment Assembly Kawasaki FD750D-BS03

Ref	Part No.	Qty.	Description				
④11009	11009-2766	1	Gasket				
④11052	11052-2058	1	Bracket				
④21066	21066-2079	1	Regulator-Voltage				
④21121	21121-2090	1	Coil-Ignition, No. 1				
④21121A	21121-2091	1	Coil-Ignition, No. 2				
④21193	21193-2177	1	Flywheel ASM				
④26004	26004-1093	1	Fuse ASM				
④26030	26030-2320	1	Harness				
④27010	27010-7001	1	Switch				
④59031	59031-2127	1	Coil-Charging				
④92009	92009-2273	4	Screw				
④92037	92037-2101	1	Clamp				
④92066	92066-2099	1	Plug-Drain				
④92070	92070-2110	2	Plug-Spark, Bpr2Es				
④92072	92072-1195	1	Band				
④92151	92151-2097	1	Bolt (12X30)				
④92170	92170-2060	5	Clamp				
④92171	92171-2060	1	Clamp				
④92200	92200-2119	1	Washer				
④130	130G0520	4	Bolt-Flanged				
④130A	130G0630	2	Bolt-Flanged				
④130B	130G0812	3	Bolt				
④130C	130G0816	2	Bolt-Flanged				
④214	214B0510	1	Screw-Pan				
④510	510A5100	1	Key-Woodruff				

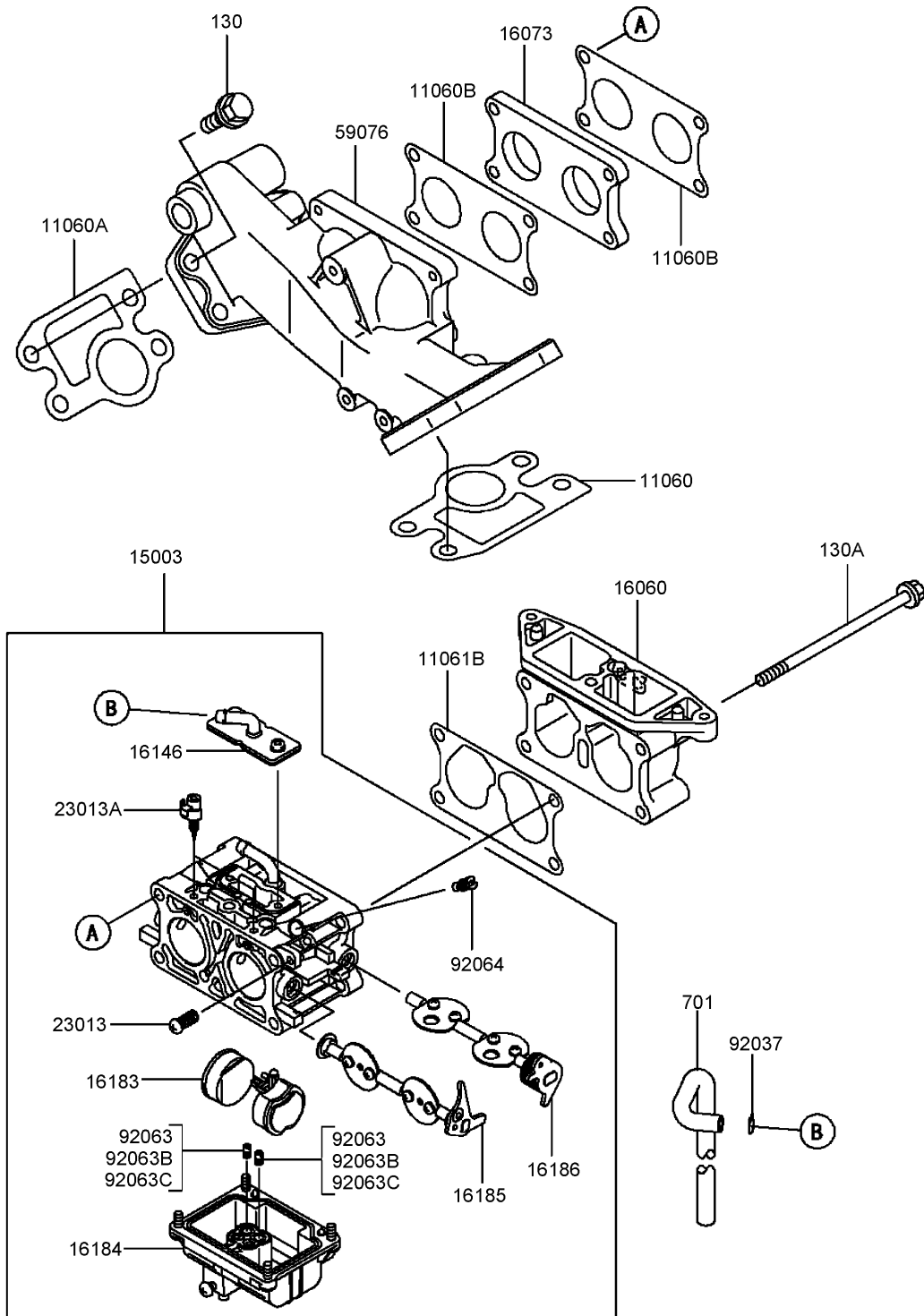
Control Equipment Assembly Kawasaki FD750D-BS03



Control Equipment Assembly Kawasaki FD750D-BS03

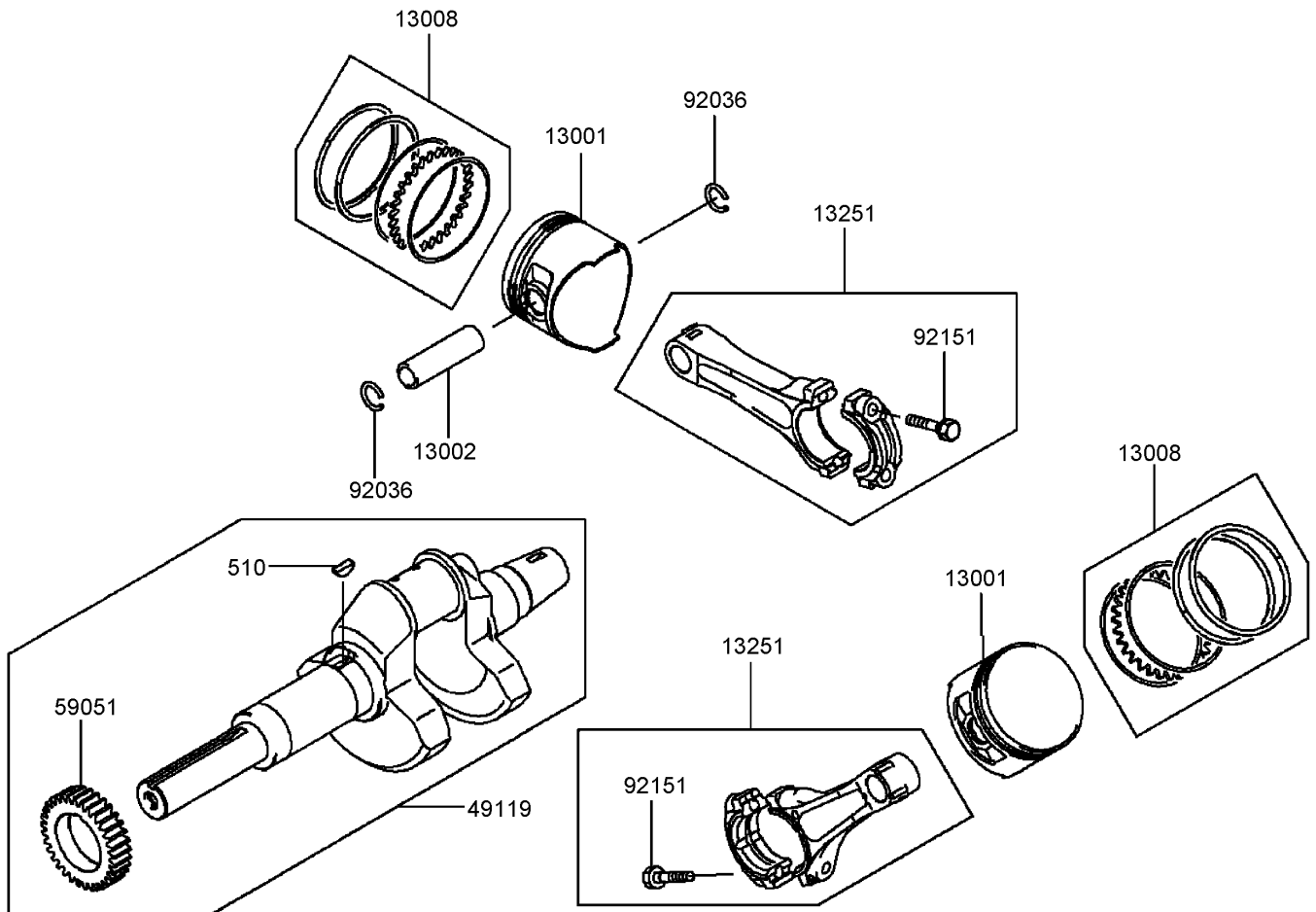
Ref	Part No.	Qty.	Description				
④11051	11051-2113	1	Bracket				
④13168	13168-2466	1	Lever-Throttle				
④13168A	13168-2467	1	Lever-Choke				
④16169	16169-2142	1	Link-Choke				
④16171	16171-2091	1	Link				
④21187	21187-2073	1	Arm ASM				
④39003	39003-2091	1	Arm-Pivot				
④39129	39129-2099	1	Spring-Governor				
④42036	42036-2060	1	Sleeve				
④49110	49110-2094	1	Governor ASM				
④49113	49113-2170	1	Control Panel ASM				
④59226	59226-2328	1	Panel-Control				
④92002	92002-1902	1	Bolt				
④92002A	92002-2269	1	Bolt				
④92009	92009-2381	2	Screw				
④92015	92015-2051	2	Nut				
④92022	92022-2372	1	Washer-6X19X1.2				
④92027	92027-1461	1	Collar				
④92037	92037-2209	2	Clamp				
④92143	92143-2135	2	Collar-6X13X2.3				
④92143A	92143-2148	1	Collar				
④92144	92144-2052	1	Spring				
④92145	92145-2058	1	Spring				
④92145A	92145-2095	1	Spring				
④92150	92150-2182	2	Bolt (5X18)				
④92200	92200-2035	1	Washer				
④92200A	92200-2108	2	Washer				
④92200B	92200-2120	1	Washer				
④92200C	92200-2122	1	Washer				
④130	130B0630	2	Bolt-Flanged				
④130A	130G0614	2	Bolt				
④311	311B0600	1	Nut-Hex				
④312	312B0500	2	Nut-Hex				
④411	411b0600	1	Washer-Plain				
④482	482J7000	1	Circlip-Type E				

Carburetor Assembly Kawasaki FD750D-BS03



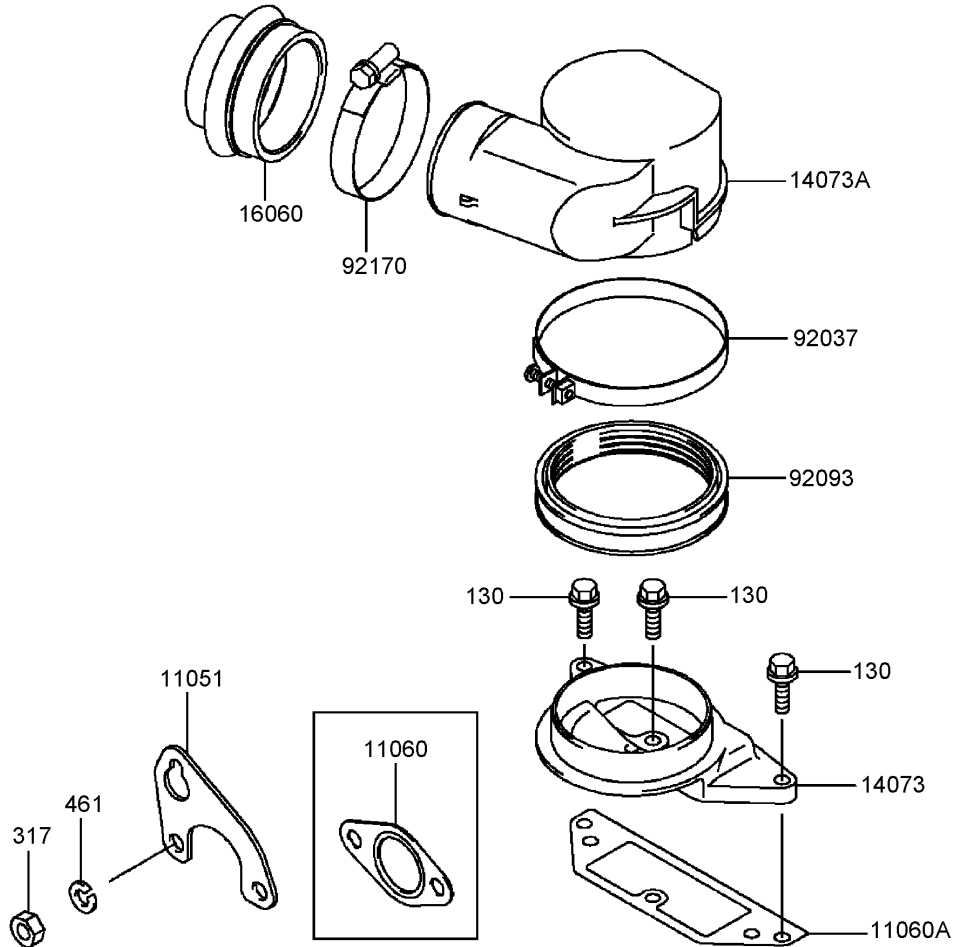
Carburetor Assembly Kawasaki FD750D-BS03

Ref	Part No.	Qty.	Description				
④11060	11060-2468	1	Gasket-Intake				
④11060A	11060-2469	1	Gasket-Intake				
④11060B	11060-2471	2	Gasket-Pipe, Intake				
④11061B	11061-2075	1	Gasket				
④15003	15003-2776	1	Carburetor ASM				
④16060	16060-2194	1	Pipe-Intake				
④16073	16073-2206	1	Insulator				
④16146	16146-2227	1	Cover ASM				
④16183	16183-2006	1	Float ASM				
④16184	16184-2004	1	Float Chamber ASM				
④16185	16185-2036	1	Throttle Valve ASM				
④16186	16186-2036	1	Choke Valve ASM				
④23013	23013-2059	1	Screw ASM				
④23013A	23013-2060	1	Screw ASM				
④59076	59076-2065	1	Manifold-Intake				
④92037	92037-1610	1	Clamp				
④92063	92063-2400	1	Jet-Main				
④92063B	92063-2401	2	Jet-Main (No. 98.8)				
④92063C	92063-2412	1	Jet-Main (No. 93.8)				
④92064	92064-2113	2	Jet-Pilot				
④130	130G0825	8	Bolt				
④130A	130T06110	4	Bolt-Flanged				
④701	701Q061000	1	Tube-Pvc				



Piston and Crankshaft Assembly Kawasaki FD750D-BS03

Ref	Part No.	Qty.	Description
④ 13001	13001-2125	2	Piston-Engine
④ 13002	13002-2069	2	Pin-Piston
④ 13008	13008-6007	2	Ring-Set, Piston
④ 13251	13251-2058	2	Connecting Rod ASM
④ 49119	49119-2198	1	Crankshaft ASM
④ 59051	59051-2358	1	Gear-Spur, 33T
④ 92036	92036-008	4	Ring-Snap
④ 92151	92151-2150	4	Bolt
④ 510	510A5100	1	Key-Woodruff

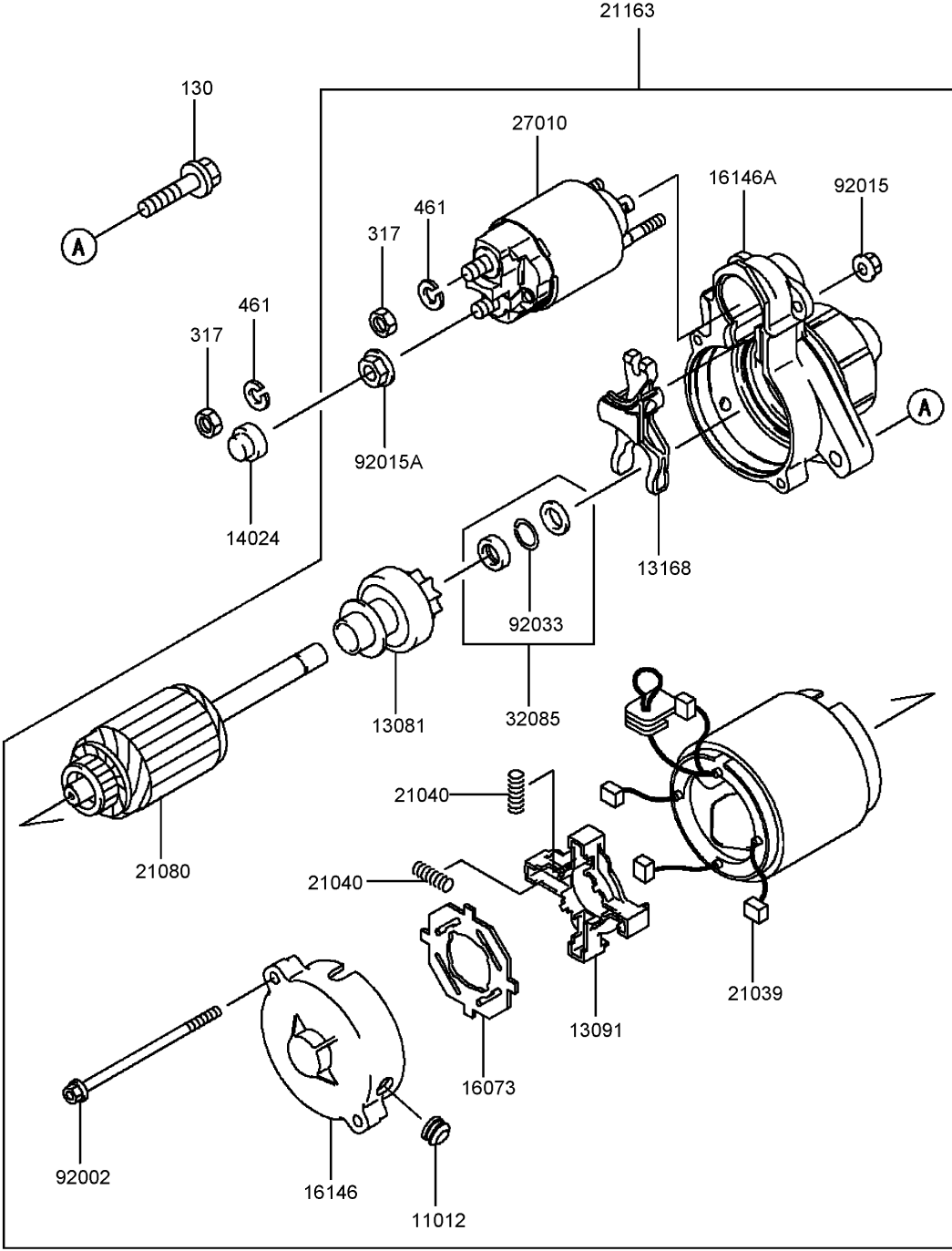


Air Filter and Muffler Assembly Kawasaki FD750D-BS03

Ref	Part No.	Qty.	Description
④ 11051	11051-2088	1	Bracket
④ 11060	11060-2467	2	Gasket-Muffler
④ 11060A	11060-2474	1	Gasket-Filter, Air
④ 14073	14073-2075	1	Duct-Lower
④ 14073A	14073-2076	1	Duct-Upper
④ 16060	16060-2197	1	Pipe-Intake
④ 92037	92037-1654	1	Clamp
④ 92093	92093-2118	1	Seal
④ 92170	92170-2075	1	Clamp
④ 130	130G0620	3	Bolt-Flanged
④ 317	317R0800	1	Nut-Hex
④ 461	461F0800	1	Washer-Spring

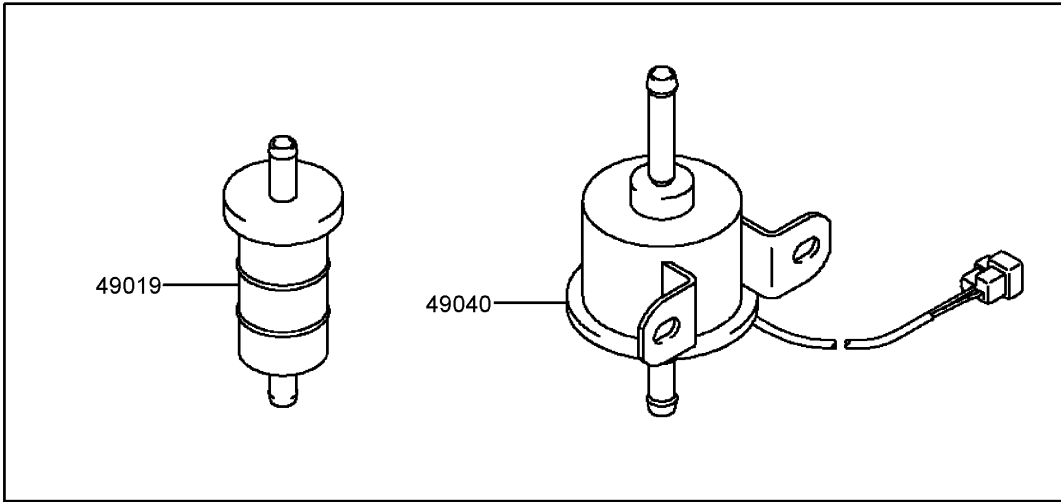
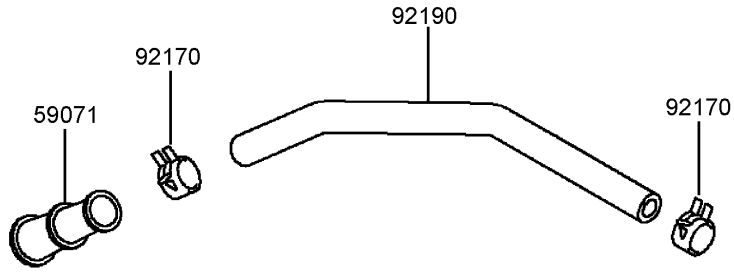
--	--	--	--	--

Starter Assembly Kawasaki FD750D-BS03



Starter Assembly Kawasaki FD750D-BS03

Ref	Part No.	Qty.	Description				
④11012	11012-2226	1	Cap				
④13081	13081-2108	1	Clutch ASM				
④13091	13091-2068	1	Brush Holder				
④13168	13168-2131	1	Lever				
④14024	14024-2205	1	Cover				
④16073	16073-2098	1	Insulator				
④16146	16146-2187	1	Cover ASM				
④16146A	16146-2225	1	Cover ASM				
④21039	21039-2059	4	Brush				
④21040	21040-2052	4	Spring-Brush				
④21080	21080-2054	1	Armature				
④21163	21163-2120	1	Starter-Electric				
④27010	27010-2122	1	Switch				
④32085	32085-2097	1	Stopper				
④92002	92002-2277	2	Bolt				
④92015	92015-2146	2	Nut				
④92015A	92015-2147	1	Nut				
④92033	92033-2081	1	Ring-Snap				
④130	130G0835	2	Bolt-Flanged				
④317	317B0800	2	Nut				
④461	461F0800	2	Washer-Spring				



Fuel Pump and Filter Assembly Kawasaki FD750D-BS03

Ref	Part No.	Qty.	Description
④49019	49019-1055	1	Filter-Fuel
④49040	49040-2065	1	Pump-Fuel
④59071	59071-2119	1	Joint
④92170	92170-2042	2	Clamp
④92190	92190-2095	1	Tube

Attachments and Accessories

For 74252 - Z587L Z Master, With 72in TURBO FORCE Side Discharge Mower

Product Name	Model/Part
Belt-Seat	100-4928
Blade-Mid Flow, 24.5 Inch	105-7711-03
Blade-Lo Flow, 24.5 Inch	105-7712-03
Blade-Atomic, 24.5 Inch	105-7719-03
Blade-Recycler, 24.5 Inch	105-7778-03
Blade-Hi Flow, 24.5 Inch	105-7784-03
72 Inch Recycler Kit	107-1612
6 Pack Blade, 24.5 Inch Hi-Flow	108-1120
6 Pack Blade, 24.5 Inch Atomic	108-1126
6 Pack-Blade, 24.5 Inch Mid-Flow	110-0404
6 Pack-Blade, 24.5 Inch Lo-Flow	110-0410
Hitch Kit	99-8925

NOTES

NOTES

